

SELECTION OF THE 16 KM IR AND WV SECTORS FOR RAMSDIS

Kevin J. Schrab, WRH/SSD

Below are examples of the 16 km WV image that can be displayed on RAMSDIS. Figure 1 shows what is now displayed with a center point of 35/135. Figure 2 shows how the image looks with a center point of 35/145. We can switch to the 35/145 if most people like that view better. It does allow you to see farther into the western Pacific Ocean, but cuts off more of the eastern US.

Please send your replies to

[Kevin Schrab](mailto:Kevin.Schrab@noaa.gov)

by Feb. 9 so any change can be implemented.

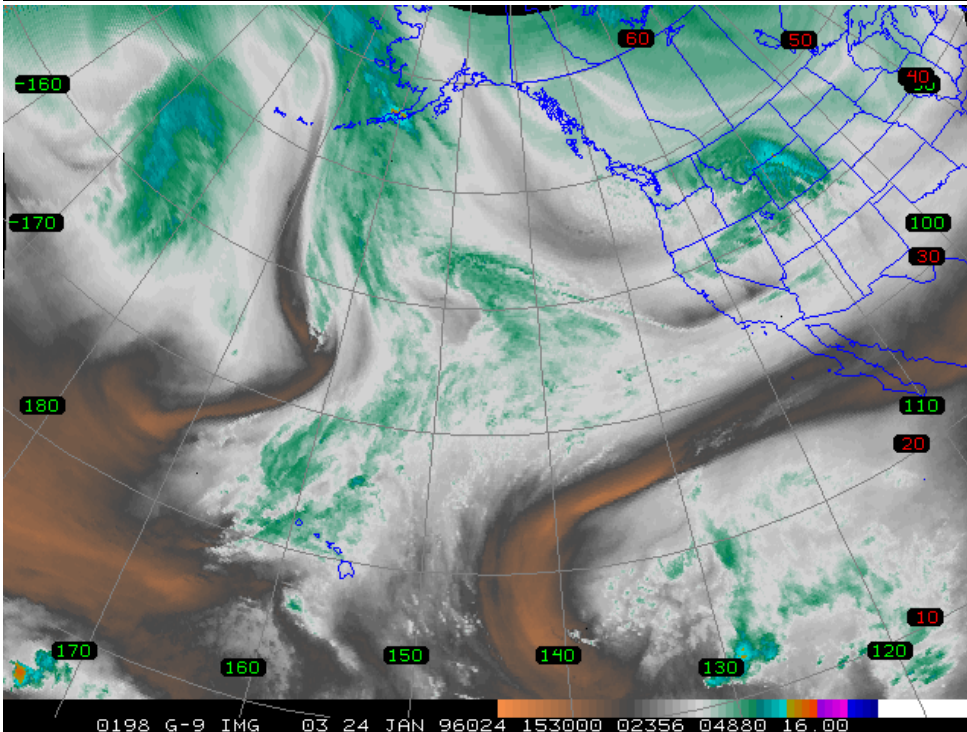
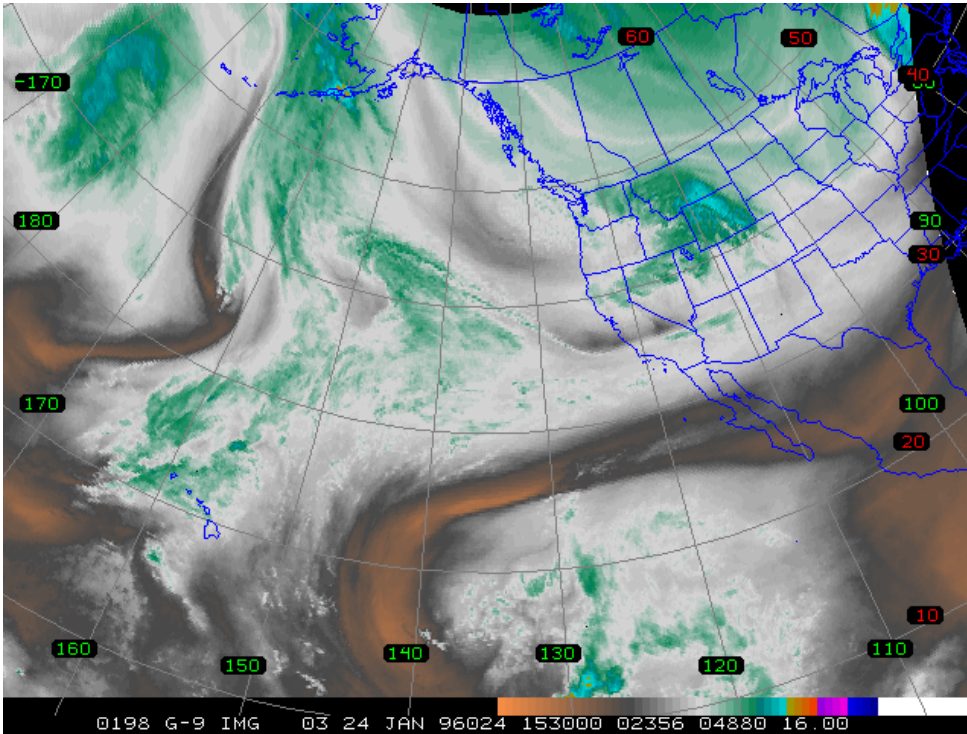


Fig. 1. 16 km WV with 35/135 center point

Fig. 2. 16 km WV with 35/145 center point

