

NOAA TECHNICAL MEMORANDUM NWS WR-271

CLIMATE OF LAS VEGAS, NEVADA

**Revision 2 by:
Andrew S. Gorelow**

January 2005

**First Edition:
Paul H. Skrbac, – December 1999**

*UNITED STATES
DEPARTMENT OF COMMERCE
Donald Evans, Secretary*

*National Oceanic and
Atmospheric Administration
Conrad C. Lautenbacher
Under Secretary
and Administrator*

*National Weather Service
David L. Johnson, Assistant
Administrator for Weather Services*

**This publication has been reviewed
and is approved for publication by
Scientific Services Division,
Western Region**

**Delain A. Edman, Chief
Scientific Services Division
Salt Lake City, Utah**



NOAA TECHNICAL MEMORANDA National Weather Service, Western Region Subseries

The National Weather Service (NWS) Western Region (WR) Subseries provides an informal medium for the documentation and quick dissemination of results not appropriate, or not yet ready, for formal publication. The series is used to report on work in progress, to describe technical procedures and practices, or to relate progress to a limited audience. These Technical Memoranda will report on investigations devoted primarily to regional and local problems of interest mainly to personnel, and hence will not be widely distributed.

Papers 1 to 25 are in the former series, ESSA Technical Memoranda, Western Region Technical Memoranda (WRTM); papers 24 to 59 are in the former series, ESSA Technical Memoranda, Weather Bureau Technical Memoranda (WBTM). Beginning with 60, the papers are part of the series, NOAA Technical Memoranda NWS. Out-of-print memoranda are not listed.

Papers 2 to 22, except for 5 (revised edition), are available from the National Weather Service Western Region, Scientific Services Division, 125 South State Street - Rm 1311, Salt Lake City, Utah 84138-1102. Paper 5 (revised edition), and all others beginning with 25 are available from the National Technical Information Service, U.S. Department of Commerce, Silas Building, 5285 Port Royal Road, Springfield, Virginia 22161. Prices vary for all paper copies; microfiche are \$3.50. Order by accession number shown in parentheses at end of each entry.

ESSA Technical Memoranda (WRTM)

- 2 Climatological Precipitation Probabilities. Compiled by Lucianne Miller, December 1965.
- 3 Western Region Pre- and Post-FP-3 Program, December 1, 1965, to February 20, 1966. Edward D. Diemer, March 1966.
- 5 Station Descriptions of Local Effects on Synoptic Weather Patterns. Philip Williams, Jr., April 1966 (REVISED November 1967, October 1969). (PB-17800)
- 8 Interpreting the RAREP. Herbert P. Benner, May 1966 (Revised January 1967).
- 11 Some Electrical Processes in the Atmosphere. J. Latham, June 1966.
- 14 A Digitalized Summary of Radar Echoes within 100 Miles of Sacramento, California. J. A. Youngberg and L. B. Overaas, December 1966.
- 21 An Objective Aid for Forecasting the End of East Winds in the Columbia Gorge, July through October. D. John Coparanis, April 1967.
- 22 Derivation of Radar Horizons in Mountainous Terrain. Roger G. Pappas, April 1967.

ESSA Technical Memoranda, Weather Bureau Technical Memoranda (WBTM)

- 25 Verification of Operation Probability of Precipitation Forecasts, April 1966-March 1967. W. W. Dickey, October 1967. (PB-176240)
- 26 A Study of Winds in the Lake Mead Recreation Area. R. P. Augulis, January 1968. (PB-177830)
- 28 Weather Extremes. R. J. Schmidli, April 1968 (Revised March 1986). (PB86 177672/AS). (Revised October 1991 - PB92-115062/AS)
- 29 Small-Scale Analysis and Prediction. Philip Williams, Jr., May 1968. (PB178425)
- 30 Numerical Weather Prediction and Synoptic Meteorology. CPT Thomas D. Murphy, USAF, May 1968. (AD 673365)
- 31 Precipitation Detection Probabilities by Salt Lake ARTC Radars. Robert K. Belesky, July 1968. (PB 179084)
- 32 Probability Forecasting--A Problem Analysis with Reference to the Portland Fire Weather District. Harold S. Ayer, July 1968. (PB 179289)
- 36 Temperature Trends in Sacramento--Another Heat Island. Anthony D. Lentini, February 1969. (PB 183055)
- 37 Disposal of Logging Residues Without Damage to Air Quality. Owen P. Cramer, March 1969. (PB 183057)
- 39 Upper-Air Losses Over Northwestern United States. A.L. Jacobson, April 1969. PB 184296)
- 40 The Man-Machine Mix in Applied Weather Forecasting in the 1970s. L.W. Snellman, August 1969. (PB 185068)
- 43 Forecasting Maximum Temperatures at Helena, Montana. David E. Olsen, October 1969. (PB 185762)
- 44 Estimated Return Periods for Short-Duration Precipitation in Arizona. Paul C. Kangieser, October 1969. (PB 187763)
- 46 Applications of the Net Radiometer to Short-Range Fog and Stratus Forecasting at Eugene, Oregon. L. Yee and E. Bates, December 1969. (PB 190476)
- 47 Statistical Analysis as a Flood Routing Tool. Robert J.C. Burnash, December 1969. (PB 188744)
- 48 Tsunami. Richard P. Augulis, February 1970. (PB 190157)
- 49 Predicting Precipitation Type. Robert J.C. Burnash and Floyd E. Hug, March 1970. (PB 190962)
- 50 Statistical Report on Aeroallergens (Pollens and Molds) Fort Huachuca, Arizona. Wayne S. Johnson, April 1970. (PB 191743)
- 51 Western Region Sea State and Surf Forecaster's Manual. Gordon C. Shields and Gerald B. Burdwell, July 1970. (PB 193102)
- 52 Sacramento Weather Radar Climatology. R.G. Pappas and C. M. Veliquette, July 1970. (PB 193347)
- 54 A Refinement of the Vorticity Field to Delineate Areas of Significant Precipitation. Barry B. Aronovitch, August 1970.
- 55 Application of the SSARR Model to a Basin without Discharge Record. Vail Schermerhorn and Donal W. Kuehl, August 1970. (PB 194394)
- 56 Areal Coverage of Precipitation in Northwestern Utah. Philip Williams, Jr., and Werner J. Heck, September 1970. (PB 194389)
- 57 Preliminary Report on Agricultural Field Burning vs. Atmospheric Visibility in the Willamette Valley of Oregon. Earl M. Bates and David O. Chilcote, September 1970. (PB 194710)
- 58 Air Pollution by Jet Aircraft at Seattle-Tacoma Airport. Wallace R. Donaldson, October 1970. (COM 71 00017)
- 59 Application of PE Model Forecast Parameters to Local-Area Forecasting. Leonard W. Snellman, October 1970. (COM 71 00016)
- 60 An Aid for Forecasting the Minimum Temperature at Medford, Oregon, Arthur W. Fritz, October 1970. (COM 71 00120)
- 63 700-mb Warm Air Advection as a Forecasting Tool for Montana and Northern Idaho. Norris E. Woerner, February 1971. (COM 71 00349)
- 64 Wind and Weather Regimes at Great Falls, Montana. Warren B. Price, March 1971.
- 65 Climate of Sacramento, California. Laura Masters-Bevan. NWSO Sacramento, November 1998 (6th Revision). (PB99-118424)
- 66 A Preliminary Report on Correlation of ARTCC Radar Echoes and Precipitation. Wilbur K. Hall, June 1971. (COM 71 00829)
- 69 National Weather Service Support to Soaring Activities. Ellis Burton, August 1971. (COM 71 00956)
- 71 Western Region Synoptic Analysis-Problems and Methods. Philip Williams, Jr., February 1972. (COM 72 10433)
- 74 Thunderstorms and Hail Days Probabilities in Nevada. Clarence M. Sakamoto, April 1972. (COM 72 10554)
- 75 A Study of the Low Level Jet Stream of the San Joaquin Valley. Ronald A. Willis and Philip Williams, Jr., May 1972. (COM 72 10707)
- 76 Monthly Climatological Charts of the Behavior of Fog and Low Stratus at Los Angeles

- International Airport. Donald M. Gales, July 1972. (COM 72 11140)
- 77 A Study of Radar Echo Distribution in Arizona During July and August. John E. Hales, Jr., July 1972. (COM 72 11136)
- 78 Forecasting Precipitation at Bakersfield, California, Using Pressure Gradient Vectors. Earl T. Riddiough, July 1972. (COM 72 11146)
- 79 Climate of Stockton, California. Robert C. Nelson, July 1972. (COM 72 10920)
- 80 Estimation of Number of Days Above or Below Selected Temperatures. Clarence M. Sakamoto, October 1972. (COM 72 10021)
- 81 An Aid for Forecasting Summer Maximum Temperatures at Seattle, Washington. Edgar G. Johnson, November 1972. (COM 73 10150)
- 82 Flash Flood Forecasting and Warning Program in the Western Region. Philip Williams, Jr., Chester L. Glenn, and Roland L. Raetz, December 1972, (Revised March 1978). (COM 73 10251)
- 83 A comparison of Manual and Semiautomatic Methods of Digitizing Analog Wind Records. Glenn E. Rasch, March 1973. (COM 73 10669)
- 86 Conditional Probabilities for Sequences of Wet Days at Phoenix, Arizona. Paul C. Kangieser, June 1973. (COM 73 11264)
- 87 A Refinement of the Use of K-Values in Forecasting Thunderstorms in Washington and Oregon. Robert Y.G. Lee, June 1973. (COM 73 11276)
- 89 Objective Forecast Precipitation Over the Western Region of the United States. Julia N. Paegle and Larry P. Kierulff, September 1973. (COM 73 11946/3AS)
- 91 Arizona "Eddy" Tornadoes. Robert S. Ingram, October 1973. (COM 73 10465)
- 92 Smoke Management in the Willamette Valley. Earl M. Bates, May 1974. (COM 74 11277/AS)
- 93 An Operational Evaluation of 500-mb Type Regression Equations. Alexander E. MacDonald, June 1974. (COM 74 11407/AS)
- 94 Conditional Probability of Visibility Less than One-Half Mile in Radiation Fog at Fresno, California. John D. Thomas, August 1974. (COM 74 11555/AS)
- 95 Climate of Flagstaff, Arizona. Paul W. Sorenson, and updated by Reginald W. Preston, January 1987. (PB87 143160/AS) (Revised August 2002 3rd Revision)
- 96 Map type Precipitation Probabilities for the Western Region. Glenn E. Rasch and Alexander E. MacDonald, February 1975. (COM 75 10428/AS)
- 97 Eastern Pacific Cut-Off Low of April 21-28, 1974. William J. Alder and George R. Miller, January 1976. (PB 250 711/AS)
- 98 Study on a Significant Precipitation Episode in Western United States. Ira S. Brenner, April 1976. (COM 75 10719/AS)
- 99 A Study of Flash Flood Susceptibility-A Basin in Southern Arizona. Gerald Williams, August 1975. (COM 75 11360/AS)
- 102 A Set of Rules for Forecasting Temperatures in Napa and Sonoma Counties. Wesley L. Tuft, October 1975. (PB 246 902/AS)
- 103 Application of the National Weather Service Flash-Flood Program in the Western Region. Gerald Williams, January 1976. (PB 253 053/AS)
- 104 Objective Aids for Forecasting Minimum Temperatures at Reno, Nevada, During the Summer Months. Christopher D. Hill, January 1976. (PB 252 866/AS)
- 105 Forecasting the Mono Wind. Charles P. Ruscha, Jr., February 1976. (PB 254 650)
- 106 Use of MOS Forecast Parameters in Temperature Forecasting. John C. Plankinton, Jr., March 1976. (PB 254 649)
- 107 Map Types as Aids in Using MOS PoPs in Western United States. Ira S. Brenner, August 1976. (PB 259 594)
- 108 Other Kinds of Wind Shear. Christopher D. Hill, August 1976. (PB 260 437/AS)
- 109 Forecasting North Winds in the Upper Sacramento Valley and Adjoining Forests. Christopher E. Fontana, September 1976. (PB 273 677/AS)
- 110 Cool Inflow as a Weakening Influence on Eastern Pacific Tropical Cyclones. William J. Denney, November 1976. (PB 264 655/AS)
- 112 The MANMOS Program. Alexander E. MacDonald, February 1977. (PB 265 941/AS)
- 113 Winter Season Minimum Temperature Formula for Bakersfield, California, Using Multiple Regression. Michael J. Oard, February 1977. (PB 273 694/AS)
- 114 Tropical Cyclone Kathleen. James R. Fors, February 1977. (PB 273 676/AS)
- 116 A Study of Wind Gusts on Lake Mead. Bradley Colman, April 1977. (PB 268 847)
- 117 The Relative Frequency of Cumulonimbus Clouds at the Nevada Test Site as a Function of K-Value. R.F. Quiring, April 1977. (PB 272 831)
- 118 Moisture Distribution Modification by Upward Vertical Motion. Ira S. Brenner, April 1977. (PB 268 740)
- 119 Relative Frequency of Occurrence of Warm Season Echo Activity as a Function of Stability Indices Computed from the Yucca Flat, Nevada, Rawinsonde. Darryl Randerson, June 1977. (PB 271 290/AS)
- 121 Climatological Prediction of Cumulonimbus Clouds in the Vicinity of the Yucca Flat Weather Station. R.F. Quiring, June 1977. (PB 271 704/AS)
- 122 A Method for Transforming Temperature Distribution to Normality. Morris S. Webb, Jr., June 1977. (PB 271 742/AS)
- 124 Statistical Guidance for Prediction of Eastern North Pacific Tropical Cyclone Motion - Part I. Charles J. Neumann and Preston W. Leftwich, August 1977. (PB 272 661)
- 125 Statistical Guidance on the Prediction of Eastern North Pacific Tropical Cyclone Motion - Part II. Preston W. Leftwich and Charles J. Neumann, August 1977. (PB 273 155/AS)
- 126 Climate of San Francisco. E. Jan Null, February 1978. (Revised by George T. Pericht, April 1988 and January 1995). (PB88 208624/AS)
- 127 Development of a Probability Equation for Winter-Type Precipitation Patterns in Great Falls, Montana. Kenneth B. Mielke, February 1978. (PB 281 387/AS)
- 128 Hand Calculator Program to Compute Parcel Thermal Dynamics. Dan Gudge, April 1978. (PB 283 080/AS)
- 129 Fire whirls. David W. Goens, May 1978. (PB 283 866/AS)
- 130 Flash-Flood Procedure. Ralph C. Hatch and Gerald Williams, May 1978. (PB 286 014/AS)
- 131 Automated Fire-Weather Forecasts. Mark A. Moliner and David E. Olsen, September 1978. (PB 289 916/AS)
- 132 Estimates of the Effects of Terrain Blocking on the Los Angeles WSR-74C Weather Radar. R.G. Pappas, R.Y. Lee, B.W. Finke, October 1978. (PB 289767/AS)
- 133 Spectral Techniques in Ocean Wave Forecasting. John A. Jannuzzi, October 1978. (PB291317/AS)
- 134 Solar Radiation. John A. Jannuzzi, November 1978. (PB291195/AS)
- 135 Application of a Spectrum Analyzer in Forecasting Ocean Swell in Southern California Coastal Waters. Lawrence P. Kierulff, January 1979. (PB2922716/AS)
- 136 Basic Hydrologic Principles. Thomas L. Dietrich, January 1979. (PB292247/AS)
- 137 LFM 24-Hour Prediction of Eastern Pacific Cyclones Refined by Satellite Images. John R. Zimmerman and Charles P. Ruscha, Jr., January 1979. (PB294324/AS)
- 138 A Simple Analysis/Diagnosis System for Real Time Evaluation of Vertical Motion. Scott Heflick and James R. Fors, February 1979. (PB294216/AS)
- 139 Aids for Forecasting Minimum Temperature in the Wenatchee Frost District. Robert S. Robinson, April 1979. (PB298339/AS)
- 140 Influence of Cloudiness on Summertime Temperatures in the Eastern Washington Fire Weather district. James Holcomb, April 1979. (PB298674/AS)
- 141 Comparison of LFM and MFM Precipitation Guidance for Nevada During Doreen. Christopher

- Hill, April 1979. (PB298613/AS)
- 142 The Usefulness of Data from Mountaintop Fire Lookout Stations in Determining Atmospheric Stability. Jonathan W. Corey, April 1979. (PB298899/AS)
- 143 The Depth of the Marine Layer at San Diego as Related to Subsequent Cool Season Precipitation Episodes in Arizona. Ira S. Brenner, May 1979. (PB298817/AS)
- 144 Arizona Cool Season Climatological Surface Wind and Pressure Gradient Study. Ira S. Brenner, May 1979. (PB298900/AS)
- 146 The BART Experiment. Morris S. Webb, October 1979. (PB80 155112)
- 147 Occurrence and Distribution of Flash Floods in the Western Region. Thomas L. Dietrich, December 1979. (PB80 160344)
- 149 Misinterpretations of Precipitation Probability Forecasts. Allan H. Murphy, Sarah Lichtenstein, Baruch Fischhoff, and Robert L. Winkler, February 1980. (PB80 174576)
- 150 Annual Data and Verification Tabulation - Eastern and Central North Pacific Tropical Storms and Hurricanes 1979. Emil B. Gunther and Staff, EPHC, April 1980. (PB80 220486)
- 151 NMC Model Performance in the Northeast Pacific. James E. Overland, PMEL-ERL, April 1980. (PB80 196033)
- 152 Climate of Salt Lake City, Utah. William J. Alder, Sean T. Buchanan, William Cope (Retired), James A. Cisco, Craig C. Schmidt, Alexander R. Smith (Retired), Wilbur E. Figgins (Retired), February 1998 - Seventh Revision (PB98-130727)
- 153 An Automatic Lightning Detection System in Northern California. James E. Rea and Chris E. Fontana, June 1980. (PB80 225592)
- 154 Regression Equation for the Peak Wind Gust 6 to 12 Hours in Advance at Great Falls During Strong Downslope Wind Storms. Michael J. Oard, July 1980. (PB91 108367)
- 155 A Raininess Index for the Arizona Monsoon. John H. Ten Harkel, July 1980. (PB81 106494)
- 156 The Effects of Terrain Distribution on Summer Thunderstorm Activity at Reno, Nevada. Christopher Dean Hill, July 1980. (PB81 102501)
- 157 An Operational Evaluation of the Scofield/Oliver Technique for Estimating Precipitation Rates from Satellite Imagery. Richard Ochoa, August 1980. (PB81 108227)
- 158 Hydrology Practicum. Thomas Dietrich, September 1980. (PB81 134033)
- 159 Tropical Cyclone Effects on California. Arnold Court, October 1980. (PB81 133779)
- 160 Eastern North Pacific Tropical Cyclone Occurrences During Intraseasonal Periods. Preston W. Leftwich and Gail M. Brown, February 1981. (PB81 205494)
- 161 Solar Radiation as a Sole Source of Energy for Photovoltaics in Las Vegas, Nevada, for July and December. Darryl Randerson, April 1981. (PB81 224503)
- 162 A Systems Approach to Real-Time Runoff Analysis with a Deterministic Rainfall-Runoff Model. Robert J.C. Burnash and R. Larry Ferral, April 1981. (PB81 224495)
- 163 A Comparison of Two Methods for Forecasting Thunderstorms at Luke Air Force Base, Arizona. LTC Keith R. Cooley, April 1981. (PB81 225393)
- 164 An Objective Aid for Forecasting Afternoon Relative Humidity Along the Washington Cascade East Slopes. Robert S. Robinson, April 1981. (PB81 23078)
- 165 Annual Data and Verification Tabulation, Eastern North Pacific Tropical Storms and Hurricanes 1980. Emil B. Gunther and Staff, May 1981. (PB82 230336)
- 166 Preliminary Estimates of Wind Power Potential at the Nevada Test Site. Howard G. Booth, June 1981. (PB82 127036)
- 167 ARAP User's Guide. Mark Mathewson, July 1981, Revised September 1981. (PB82 196783)
- 168 Forecasting the Onset of Coastal Gales Off Washington-Oregon. John R. Zimmerman and William D. Burton, August 1981. (PB82 127051)
- 169 A Statistical-Dynamical Model for Prediction of Tropical Cyclone Motion in the Eastern North Pacific Ocean. Preston W. Leftwich, Jr., October 1981. (PB82195298)
- 170 An Enhanced Plotter for Surface Airways Observations. Andrew J. Spry and Jeffrey L. Anderson, October 1981. (PB82 153883)
- 171 Verification of 72-Hour 500-MB Map-Type Predictions. R.F. Quiring, November 1981. (PB82-158098)
- 172 Forecasting Heavy Snow at Wenatchee, Washington. James W. Holcomb, December 1981. (PB82-177783)
- 173 Central San Joaquin Valley Type Maps. Thomas R. Crossan, December 1981. (PB82 196064)
- 174 ARAP Test Results. Mark A. Mathewson, December 1981. (PB82 198103)
- 176 Approximations to the Peak Surface Wind Gusts from Desert Thunderstorms. Darryl Randerson, June 1982. (PB82 253089)
- 177 Climate of Phoenix, Arizona. Robert J. Schmidli and Austin Jamison, April 1969 (Revised July 1996). (PB96-191614)
- 178 Annual Data and Verification Tabulation, Eastern North Pacific Tropical Storms and Hurricanes 1982. E.B. Gunther, June 1983. (PB85 106078)
- 179 Stratified Maximum Temperature Relationships Between Sixteen Zone Stations in Arizona and Respective Key Stations. Ira S. Brenner, June 1983. (PB83 249904)
- 180 Standard Hydrologic Exchange Format (SHEF) Version I. Phillip A. Pasteris, Vernon C. Bissel, David G. Bennett, August 1983. (PB85 106052)
- 181 Quantitative and Spatial Distribution of Winter Precipitation along Utah's Wasatch Front. Lawrence B. Dunn, August 1983. (PB85 106912)
- 182 500 Millibar Sign Frequency Teleconnection Charts - Winter. Lawrence B. Dunn, December 1983. (PB85 106276)
- 183 500 Millibar Sign Frequency Teleconnection Charts - Spring. Lawrence B. Dunn, January 1984. (PB85 111367)
- 184 Collection and Use of Lightning Strike Data in the Western U.S. During Summer 1983. Glenn Rasch and Mark Mathewson, February 1984. (PB85 110534)
- 185 500 Millibar Sign Frequency Teleconnection Charts - Summer. Lawrence B. Dunn, March 1984. (PB85 111359)
- 186 Annual Data and Verification Tabulation eastern North Pacific Tropical Storms and Hurricanes 1983. E.B. Gunther, March 1984. (PB85 109635)
- 187 500 Millibar Sign Frequency Teleconnection Charts - Fall. Lawrence B. Dunn, May 1984. (PB85-110930)
- 188 The Use and Interpretation of Isentropic Analyses. Jeffrey L. Anderson, October 1984. (PB85-132694)
- 189 Annual Data & Verification Tabulation Eastern North Pacific Tropical Storms and Hurricanes 1984. E.B. Gunther and R.L. Cross, April 1985. (PB85 1878887AS)
- 190 Great Salt Lake Effect Snowfall: Some Notes and An Example. David M. Carpenter, October 1985. (PB86 119153/AS)
- 191 Large Scale Patterns Associated with Major Freeze Episodes in the Agricultural Southwest. Ronald S. Hamilton and Glenn R. Lussky, December 1985. (PB86 144474AS)
- 192 NWR Voice Synthesis Project: Phase I. Glen W. Sampson, January 1986. (PB86 145604/AS)
- 193 The MCC - An Overview and Case Study on Its Impact in the Western United States. Glenn R. Lussky, March 1986. (PB86 170651/AS)
- 194 Annual Data and Verification Tabulation Eastern North Pacific Tropical Storms and Hurricanes 1985. E.B. Gunther and R.L. Cross, March 1986. (PB86 170941/AS)
- 195 Rapid Interpretation Guidelines. Roger G. Pappas, March 1986. (PB86 177680/AS)
- 196 A Mesoscale Convective Complex Type Storm over the Desert Southwest. Darryl Randerson, April 1986. (PB86 190998/AS)
- 197 The Effects of Eastern North Pacific Tropical Cyclones on the Southwestern United States. Walter Smith, August 1986. (PB87 106258AS)
- 198 Preliminary Lightning Climatology Studies for Idaho. Christopher D. Hill, Carl J. Gorski, and Michael C. Conger, April 1987. (PB87 180196/AS)
- 199 Heavy Rains and Flooding in Montana: A Case for Slantwise Convection. Glenn R. Lussky, April 1987. (PB87 185229/AS)
- 200 Annual Data and Verification Tabulation Eastern North Pacific Tropical Storms and Hurricanes 1986. Roger L. Cross and Kenneth B. Mielke, September 1987. (PB88 110895/AS)
- 201 An Inexpensive Solution for the Mass Distribution of Satellite Images. Glen W. Sampson and George Clark, September 1987. (PB88 114038/AS)
- 202 Annual Data and Verification Tabulation Eastern North Pacific Tropical Storms and Hurricanes 1987. Roger L. Cross and Kenneth B. Mielke, September 1988. (PB88-101935/AS)
- 203 An Investigation of the 24 September 1986 "Cold Sector" Tornado Outbreak in Northern California. John P. Monteverdi and Scott A. Braun, October 1988. (PB89 121297/AS)
- 204 Preliminary Analysis of Cloud-To-Ground Lightning in the Vicinity of the Nevada Test Site. Carven Scott, November 1988. (PB89 128649/AS)
- 205 Forecast Guidelines For Fire Weather and Forecasters -- How Nighttime Humidity Affects Wildland Fuels. David W. Goens, February 1989. (PB89 162549/AS)
- 206 A Collection of Papers Related to Heavy Precipitation Forecasting. Western Region Headquarters, Scientific Services Division, August 1989. (PB89 230833/AS)
- 207 The Las Vegas McCarran International Airport Microburst of August 8, 1989. Carven A. Scott, June 1990. (PB90-240268)
- 208 Meteorological Factors Contributing to the Canyon Creek Fire Blowup, September 6 and 7, 1988. David W. Goens, June 1990. (PB90-245085)
- 209 Stratus Surge Prediction Along the Central California Coast. Peter Felsch and Woodrow Whitlatch, December 1990. (PB91-129239)
- 210 Hydrotools. Tom Egger, January 1991. (PB91-151787/AS)
- 211 A Northern Utah Soaker. Mark E. Struthwolf, February 1991. (PB91-168716)
- 212 Preliminary Analysis of the San Francisco Rainfall Record: 1849-1990. Jan Null, May 1991. (PB91-208439)
- 213 Idaho Zone Prefomat, Temperature Guidance, and Verification. Mark A. Mollner, July 1991. (PB91-227405/AS)
- 214 Emergency Operational Meteorological Considerations During an Accidental Release of Hazardous Chemicals. Peter Mueller and Jerry Galt, August 1991. (PB91-235424)
- 215 WeatherTools. Tom Egger, October 1991. (PB93-184950)
- 216 Creating MOS Equations for RAWs Stations Using Digital Model Data. Dennis D. Gettman, December 1991. (PB92-131473/AS)
- 217 Forecasting Heavy Snow Events in Missoula, Montana. Mike Richmond, May 1992. (PB92-196104)
- 218 NWS Winter Weather Workshop in Portland, Oregon. Various Authors, December 1992. (PB93-146785)
- 219 A Case Study of the Operational Usefulness of the Sharp Workstation in Forecasting a Mesocyclone-Induced Cold Sector Tornado Event in California. John P. Monteverdi, March 1993. (PB93-178697)
- 220 Climate of Pendleton, Oregon. Claudia Bell, August 1993. (PB93-227536)
- 221 Utilization of the Bulk Richardson Number, Helicity and Sounding Modification in the Assessment of the Severe Convective Storms of 3 August 1992. Eric C. Evenson, September 1993. (PB94-131943)
- 222 Convective and Rotational Parameters Associated with Three Tornado Episodes in Northern and Central California. John P. Monteverdi and John Quadros, September 1993. (PB94-131943)
- 223 Climate of San Luis Obispo, California. Gary Ryan, February 1994. (PB94-162062)
- 224 Climate of Wenatchee, Washington. Michael W. McFarland, Roger G. Buckman, and Gregory E. Matzen, March 1994. (PB94-164308)
- 225 Climate of Santa Barbara, California. Gary Ryan, December 1994. (PB95-173720)
- 226 Climate of Yakima, Washington. Greg DeVoir, David Hogan, and Jay Neher, December 1994. (PB95-173688)
- 227 Climate of Kalispell, Montana. Chris Maier, December 1994. (PB95-169488)
- 228 Forecasting Minimum Temperatures in the Santa Maria Agricultural District. Wilfred Pi and Peter Felsch, December 1994. (PB95-171088)
- 229 The 10 February 1994 Oroville Tornado--A Case Study. Mike Staudenmaier, Jr., April 1995. (PB95-241873)
- 230 Santa Ana Winds and the Fire Outbreak of Fall 1993. Ivory Small, June 1995. (PB95-241865)
- 231 Washington State Tornadoes. Tresté Huse, July 1995. (PB96-107024)
- 232 Fog Climatology at Spokane, Washington. Paul Frisbie, July 1995. (PB96-106604)
- 233 Storm Relative Isentropic Motion Associated with Cold Fronts in Northern Utah. Kevin B. Baker, Kathleen A. Hadley, and Lawrence B. Dunn, July 1995. (PB96-106596)
- 234 Some Climatological and Synoptic Aspects of Severe Weather Development in the Northwestern United States. Eric C. Evenson and Robert H. Johns, October 1995. (PB96-112958)
- 235 Climate of Las Vegas, Nevada. Paul H. Skrbac and Scott Cordero, December 1995. (PB96-135553)
- 236 Climate of Astoria, Oregon. Mark A. McInerney, January 1996.
- 237 The 6 July 1995 Severe Weather Events in the Northwestern United States: Recent Examples of SSWEs. Eric C. Evenson, April 1996.
- 238 Significant Weather Patterns Affecting West Central Montana. Joe Lester, May 1996. (PB96-178751)
- 239 Climate of Portland, Oregon. Clinton C. D. Rockey, May 1996. (PB96-17603) - First Revision, October 1999
- 240 Downslope Winds of Santa Barbara, CA. Gary Ryan, July 1996. (PB96-191697)
- 241 Operational Applications of the Real-time National Lightning Detection Network Data at the NWSO Tucson, AZ. Darren McCollum, David Bright, Jim Meyer, and John Glueck, September 1996. (PB97-108450)
- 242 Climate of Pocatello, Idaho. Joe Heim, October 1996. (PB97-114540)
- 243 Climate of Great Falls, Montana. Matt Jackson and D. C. Williamson, December 1996. (PB97-126684)
- 244 WSR-88D VAD Wind Profile Data Influenced by Bird Migration over the Southwest United States. Jesus A. Haro, January 1997. (PB97-135263)
- 245 Climatology of Cape for Eastern Montana and Northern Wyoming. Heath Hockenberry and Keith Meier, January 1997. (PB97-133425)
- 246 A Western Region Guide to the Eta-29 Model. Mike Staudenmaier, Jr., March 1997. (PB97-144075)
- 247 The Northeast Nevada Climate Book. Edwin C. Clark, March 1997. (First Revision - January 1998 - Andrew S. Gorelow and Edwin C. Clark - PB98-123250)
- 248 Climate of Eugene, Oregon. Clinton C. D. Rockey, April 1997. (PB97-155303)
- 249 Climate of Tucson, Arizona. John R. Glueck, October 1997
- 250 Northwest Oregon Daily Extremes and Normans. Clinton C. D. Rockey, October 1997
- 251 A Composite Study Examining Five Heavy Snowfall Patterns for South-Central Montana. Jonathan D. Van Ausdall and Thomas W. Humphrey, February 1998. (PB98-125255)
- 252 Climate of Eureka, California. Alan H. Puffer, February 1998. (PB98-130735)
- 253 Inferred Oceanic Kelvin/Rosby Wave Influence on North American West Coast Precipitation. Martin E. Lee and Dudley Chelton, April 1998. (PB98-139744)
- 254 Conditional Symmetric Instability--Methods of Operational Diagnosis and Case Study of 23-24 February 1994 Eastern Washington/Oregon Snowstorm. Gregory A. DeVoir, May 1998. (PB98-144660)
- 255 Creation and Maintenance of a Comprehensive Climate Data Base. Eugene Petrescu, August 1998. (PB98-173529)
- 256 Climate of San Diego, California. Thomas E. Evans, III and Donald A. Halvorson, October 1998. (PB99-109381)
- 257 Climate of Seattle, Washington. Dana Felton, November 1998. (PB99-113482)
- 258 1985-1998 North Pacific Tropical Cyclones Impacting the Southwestern United States and Northern Mexico: An Updated Climatology. Armando L. Garza, January 1999. (PB99-130502)
- 259 Climate of San Jose, California. Miguel Miller, April 1999. (PB99-145633)
- 260 Climate of Las Vegas, Nevada. Paul H. Skrbac, December 1999
- 261 Climate of Los Angeles, California. David Bruno, Gary Ryan, with assistance from Curt Kaplan and Jonathan Slemmer, January 2000
- 262 Climate of Miles City, Montana. David A. Spector and Mark H. Strobin, April 2000
- 263 Analysis of Radiosonde Data for Spokane, Washington. Rocco D. Pelatti, November 2000
- 264 Climate of Billings, Montana. Jeffrey J. Zeltwanger and Mark H. Strobin, November 2000
- 265 Climate of Sheridan, Wyoming. Jeffrey J. Zeltwanger, Sally Springer, Mark H. Strobin, March 2001

- 266 Climate of Sacramento, California. Laura Masters-Bevan. December 2000 (7th Revision)
- 267 Sulphur Mountain Doppler Radar: A Performance Study. Los Angeles/Oxnard WFO. August 2001
- 268 Prediction of Heavy Snow Events in the Snake River Plain Using Pattern Recognition and Regression Techniques. Thomas Andretta and William Wojcik. October 2003
- 269 The Lewis and Clark Expedition 18-03-1806, Weather, Water and Climate, Vernon Preston, Pocatello Idaho, December 2004.
- 270 Climate of San Diego, California, Emmanuel M. Isla, September 2004 (2nd Edition)
- 271 Climate of Las Vegas, Nevada, Andrew S. Gorelow, January 2005, (2nd Edition)

TABLE OF CONTENTS

| | |
|--|-------|
| ABSTRACT AND NARRATIVE SUMMARY..... | 1-2 |
| MONTHLY NORMALS..... | 3 |
| MONTHLY EXTREMES (RECORDS)..... | 4 |
| <u>MONTHLY TEMPERATURE EXTREMES/DAILY NORMALS</u> | |
| JANUARY | 5 |
| FEBRUARY | 6 |
| MARCH | 7 |
| APRIL | 8 |
| MAY | 9 |
| JUNE | 10 |
| JULY | 11 |
| AUGUST | 12 |
| SEPTEMBER | 13 |
| OCTOBER | 14 |
| NOVEMBER | 15 |
| DECEMBER | 16 |
| <u>PRECIPITATION DATA</u> | |
| 10 WETTEST AND DRIEST YEARS AND OVERALL MONTHS..... | 17 |
| 10 WETTEST AND DRIEST MONTHS BY MONTH..... | 18-20 |
| MEASURABLE PRECIPITATION DAYS AND EXTREMES..... | 21 |
| CONSECUTIVE WET AND DRY DAYS..... | 22 |
| 24 HOUR PRECIPITATION RECORDS..... | 23 |
| <u>TEMPERATURE DATA</u> | |
| 10 COLDEST AND HOTTEST YEARS AND OVERALL MONTHS..... | 24 |
| 10 COLDEST AND HOTTEST MONTHS BY MONTH..... | 25-27 |
| DESERT HEAT STATISTICS..... | 28-30 |
| FROST/FREEZE DATA..... | 31 |
| <u>THUNDERSTORMS/HAIL</u> | |
| THUNDERSTORMS..... | 32 |
| HAIL..... | 33 |
| <u>WIND</u> | |
| WIND NORMALS AND EXTREMES..... | 34 |
| 10 WINDIEST MONTHS BY MONTH..... | 35-36 |

MISCELLANEOUS DATA

HEATING/COOLING DEGREE DAYS.....37
SNOW.....38
SUNSHINE.....39-40
CLOUDIEST MONTHS AND YEARS.....41
RELATIVE HUMIDITY.....42
FOG.....43
PRESSURE.....44
HOLIDAY WEATHER.....45-46
CONSECUTIVE DAYS TEMPERATURES ABOVE AND BELOW NORMAL.....47
ACKNOWLEDGMENTS.....48

FIGURES

- Figure 1. Record Maximum and Minimum Monthly Temperatures
- Figure 2. Annual Precipitation (in inches), 1937-2004
- Figure 3. Average Relative Humidity at 4 A.M. and 4 P.M. PST
- Figure 4. Average Number of Thunderstorm Days, by Month
- Figure 5. Average Number of Days Exceeding 90F/100F, by Month
- Figure 6. Monthly Precipitation Extremes
- Figure 7. Peak Wind Gusts per Month
- Figure 8. Average Yearly Temperature by Decade
- Figure 9. Population of Clark County, Nevada
- Figure 10. Minimum Temperature by Decade
- Figure 11. Maximum Temperature by Decade
- Figure 12. Normal Monthly Precipitation

CLIMATE OF LAS VEGAS, NEVADA

ABSTRACT

During the last two decades, the Las Vegas Valley has emerged as one of the fastest growing metropolitan areas in the nation. The population has expanded from about 400,000 in 1980 to 1.8 million people in 2005. In addition, Las Vegas attracts more visitors annually than any other American city except Orlando, Florida. As a result, local forecasters continually field inquiries regarding the area's climate from a broad base of public interests. Official weather observations have been recorded in Las Vegas since 1937, initially at Nellis Field in the northeast portion of the valley, then later at McCarran Field on the south end. This paper is a revision of the 1999 edition and includes updated climate information through 2004. This paper is used as a reference for National Weather Service personnel to aid in responding to climate inquiries and is also intended to be a resource for the local media.

NARRATIVE SUMMARY

I. Topography and History

Las Vegas is located in a broad desert valley in extreme southern Nevada. Mountains surrounding the valley extend 2,000 to 10,000 feet above the valley floor. The Las Vegas Valley comprises about 600 square miles and runs from northwest to southeast. The valley is bounded on the north by the Sheep Range, while Boulder City and the Lake Mead National Recreation Area are generally considered its southern extent. To the west are the Spring Mountains, which include Mt. Charleston, the region's highest peak at 11,918 feet. Several smaller ranges line the eastern rim of the valley, including the Muddy Mountains, the Black Mountains and the Eldorado Range.

Official weather observations began in 1937 at what is now Nellis Air Force Base. In late 1948, the U.S. Weather Bureau moved to McCarran Field, now McCarran International Airport. McCarran is located 7 miles south of downtown Las Vegas. For most of the Las Vegas metropolitan area, the valley floor slopes downward from west to east. This affects the local climatology significantly in terms of driving variations in wind, precipitation, and storm run off.

II. General Climatic Summary

The four seasons are actually well defined in Las Vegas, although they differ from the traditional view of seasonal variation. Summers display classic desert southwest characteristics. Daily high temperatures typically exceed 100 degrees with lows in the 70s. The summer heat is tempered somewhat by the extremely low relative humidities. However, it is not uncommon for humidity to increase markedly for several weeks each summer in association with a moist "monsoonal flow" from the south, typically during July and August. Aside from increasing the discomfort level, these moist winds also support the development of spectacular desert thunderstorms which are frequently associated with significant flash flooding and/or strong downburst winds. On average, sunny days are recorded 85 percent of the time and there are over 300 days per year with no measurable rainfall.

Winters on the whole, are mild and pleasant. Afternoon temperatures average near 60 degrees and skies are mostly clear. Pacific storms occasionally produce rainfall in Las Vegas, but in general, the Sierra Nevada Mountains of eastern California and the Spring Mountains immediately west of the Las Vegas Valley act as effective barriers to moisture.

Snow accumulation is rare in Las Vegas. Flurries are observed once or twice during most winters, but snowfall of an inch or more occurs only once every four to five years. Freezing temperatures do occur with some regularity each year with a 30 year average of 24 days with low temperatures at or below 32 degrees. Snowfall is rather common in the mountains surrounding Las Vegas with the Spring Mountains receiving between 5 and 10 feet annually.

The spring and fall seasons are generally considered ideal. Although rather sharp temperature changes can occur during these months, outdoor activities are seldom hampered.

Strong winds are arguably the most persistent and provoking weather hazard experienced in the area. Winds over 50 mph are infrequent but can occur with some of the more vigorous storms. Winter and spring wind events often generate widespread areas of blowing dust and sand. Strong wind episodes in the summertime are usually connected with thunderstorms, and are thus more isolated and localized. Prevailing wind direction is typically either southwest or north, unless associated with a thunderstorm outflow.

LAS VEGAS NEVADA

PERIOD OF RECORD: 1971-2000

| | MAX | MIN | AVG | HDD | CDD | PCPN | SEASON HDD | TOTAL CDD |
|--------|-------|------|------|------|------|------|---------------|--------------|
| JAN | 57.1 | 36.8 | 47.0 | 574 | 0 | 0.59 | 1520 | 0 |
| FEB | 63.0 | 41.4 | 52.2 | 375 | 0 | 0.69 | 1895 | 0 |
| MAR | 69.5 | 47.0 | 58.3 | 244 | 20 | 0.59 | 2139 | 20 |
| APR | 78.1 | 53.9 | 66.0 | 83 | 98 | 0.15 | 2222 | 118 |
| MAY | 87.8 | 62.9 | 75.4 | 16 | 323 | 0.24 | 2238 | 441 |
| JUN | 98.9 | 72.3 | 85.6 | 0 | 602 | 0.08 | 2238 | 1043 |
| JUL | 104.1 | 78.2 | 91.2 | 0 | 796 | 0.44 | 0 | 1839 |
| AUG | 101.8 | 76.7 | 89.3 | 0 | 739 | 0.45 | 0 | 2578 |
| SEP | 93.8 | 68.8 | 81.3 | 0 | 474 | 0.31 | 0 | 3052 |
| OCT | 80.8 | 56.5 | 68.7 | 57 | 157 | 0.24 | 57 | 3209 |
| NOV | 66.0 | 44.0 | 55.0 | 318 | 4 | 0.31 | 375 | 3213 |
| DEC | 57.3 | 36.6 | 47.0 | 571 | 0 | 0.40 | 946 | 3213 |
| ANNUAL | 79.9 | 56.3 | 68.1 | 2238 | 3213 | 4.49 | | |

ALL UNITS OF MEASUREMENT IN THIS DOCUMENT ARE DEFINED AS FOLLOWS:

TEMPERATURES ARE IN DEGREES FAHRENHEIT

PRECIPITATION IS IN INCHES

EXTREMES AND RECORDS ARE CONSIDERED THE SAME THING

HEATING AND COOLING DEGREE DAYS ARE BASED ON A 65 DEGREE STANDARD

(e.g. a mean temp for the day of 75 would equate to 10 cooling degree days
or a mean temp of 50 degrees would equate to 15 heating degree days)

THE HEATING DEGREE DAY SEASON EXTENDS FROM JULY 1 THROUGH JUNE 30

THE COOLING DEGREE DAY SEASON EXTENDS FROM JANUARY 1 THROUGH DECEMBER 31

MONTHLY EXTREMES (RECORDS)

| MONTH | HIGH MAX | LAST OCCURRED | LOW MIN | LAST OCCURRED | LOW MAX | LAST OCCURRED | HIGH MIN | LAST OCCURRED |
|-----------|-------------|------------------|------------|------------------|------------|------------------|-------------|------------------|
| JANUARY | 77 | 01/26/75 | 8# | 01/13/63 | 28# | 01/21/37 | 58 | 01/20/99 |
| FEBRUARY | 87 | 02/26/86 | 16 | 02/07/89 | 34 | 02/06/89 | 59 | 02/26/89 |
| MARCH | 92 | 03/21/04 | 19 | 03/02/39 | 42 | 03/01/71 | 71 | 03/23/04 |
| APRIL | 99 | 04/27/00 | 31 | 04/02/75 | 48* | 04/02/97 | 74 | 04/24/43 |
| MAY | 109* | 05/28/03 | 38 | 05/03/42 | 60 | 05/08/79 | 89 | 05/28/03 |
| JUNE | 116 | 06/15/40 | 48* | 06/06/93 | 67 | 06/04/99 | 89 | 06/30/94 |
| JULY | 117# | 07/24/42 | 56 | 07/21/40 | 81 | 07/08/92 | 92#* | 07/23/03 |
| AUGUST | 116 | 08/03/79 | 54 | 08/03/37 | 74 | 08/18/83 | 90 | 08/12/03 |
| SEPTEMBER | 113 | 09/01/50 | 43 | 09/27/48 | 67 | 09/18/65 | 84 | 09/01/02 |
| OCTOBER | 103 | 10/01/78 | 26 | 10/30/71 | 50 | 10/29/71 | 73 | 10/05/88 |
| NOVEMBER | 87 | 11/01/88 | 15 | 11/24/38 | 42 | 11/16/64 | 62 | 11/12/83 |
| DECEMBER | 78 | 12/02/40 | 11 | 12/23/90 | 32 | 12/10/72 | 57 | 12/24/55 |

- EXTREMES FOR ENTIRE PERIOD OF RECORD (1937-2004)
 * - ALSO IN PREVIOUS YEARS

PERIOD OF RECORD INCLUDES TWO MAJOR LOCATION MOVES ON DECEMBER 18TH 1948 FROM WHAT IS NOW KNOWN AS NELLIS AIR FORCE BASE (36 DEGREES 14 MINUTES NORTH - 115 DEGREES 02 MINUTES WEST) TO MCCARRAN INTERNATIONAL AIRPORT (36 DEGREES 05 MINUTES NORTH - 115 DEGREES 10 MINUTES WEST) AND FINALLY TO ITS CURRENT LOCATION AT MCCARRAN INTERNATIONAL AIRPORT (36 DEGREES 04 MINUTES 44 SECONDS NORTH - 115 DEGREES 09 MINUTES 19 SECONDS WEST).

JANUARY

TEMPERATURE EXTREMES - 1937 TO 2004
DAILY NORMALS - 1971 TO 2000

| DATE | HI MAX | LAST OCCURD | LO MIN | LAST OCCURD | LO MAX | LAST OCCURD | HI MIN | LAST OCCURD | NORMAL MAX/MIN |
|------|-----------|----------------|-----------|----------------|-----------|----------------|-----------|----------------|-------------------|
| 1 | 69 | 1981 | 21 | 1954 | 39 | 1979 | 47 | 1996 | 56/35 |
| 2 | 69 | 1997* | 13 | 1974 | 31 | 1974 | 52 | 1997 | 56/36 |
| 3 | 69 | 1997 | 12 | 1974 | 32 | 1974 | 47 | 1998 | 56/36 |
| 4 | 67 | 1981 | 14 | 1970 | 33 | 1974 | 45 | 1981 | 56/36 |
| 5 | 71 | 2003 | 12 | 1950 | 35 | 1971 | 46 | 1986 | 56/36 |
| 6 | 74 | 1962 | 12 | 1971 | 35 | 1971 | 50 | 2003 | 56/36 |
| 7 | 75 | 1962 | 15 | 1971 | 36 | 1971 | 52 | 1962 | 56/36 |
| 8 | 74 | 1962 | 19 | 1937 | 28# | 1937 | 47 | 1993 | 56/36 |
| 9 | 72 | 1945 | 11 | 1937 | 31 | 1937 | 53 | 2005 | 56/36 |
| 10 | 69 | 1996 | 11 | 1937 | 35 | 1949 | 54 | 2005 | 56/36 |
| 11 | 73 | 1938 | 14 | 1937 | 36 | 1949 | 48 | 1980 | 56/36 |
| 12 | 71 | 1986 | 14 | 1963 | 29 | 1963 | 51 | 1980 | 56/36 |
| 13 | 73 | 1945 | 8# | 1963 | 31 | 1963 | 48 | 1980 | 56/36 |
| 14 | 74 | 1945 | 14 | 1963 | 42 | 1997* | 50 | 1980 | 57/36 |
| 15 | 73 | 1945 | 20 | 1962 | 38 | 1997 | 44 | 1996* | 57/36 |
| 16 | 73 | 1976 | 23 | 1964 | 38 | 1949 | 50 | 2000 | 57/37 |
| 17 | 72 | 1976 | 20 | 1949 | 36 | 1949 | 52 | 2000 | 57/37 |
| 18 | 72 | 1971 | 20 | 1949 | 40 | 1949 | 51 | 2000 | 57/37 |
| 19 | 74 | 1971 | 10 | 1943 | 35 | 1949 | 51 | 1998 | 57/37 |
| 20 | 72 | 1986 | 17 | 1937 | 33 | 1937 | (58) | 1999 | 57/37 |
| 21 | 69* | 2000 | 13 | 1937 | 28# | 1937 | 54 | 2000 | 57/37 |
| 22 | 74 | 1948 | 9 | 1937 | 31 | 1937 | 50 | 1997 | 58/37 |
| 23 | 76 | 1948 | 14 | 1937 | 35 | 1937 | 47 | 1997 | 58/37 |
| 24 | 75 | 1948 | 15 | 1937 | 31 | 1937 | 56 | 2000 | 58/38 |
| 25 | 75 | 1953 | 8# | 1937 | 35 | 1949 | 56 | 2000 | 58/38 |
| 26 | (77) | 1975 | 10 | 1937 | 39 | 1949 | 52 | 1956 | 58/38 |
| 27 | 73 | 1971 | 12 | 1937 | 39 | 1949 | 48 | 1941 | 59/38 |
| 28 | 71 | 1971 | 18 | 1937 | 35 | 1979 | 48 | 1980 | 59/38 |
| 29 | 71 | 1976 | 17 | 1979 | 38 | 1979 | 50 | 1997 | 59/38 |
| 30 | 72 | 1971 | 18 | 1949 | 38 | 1979 | 54 | 1963 | 59/39 |
| 31 | 75 | 2003 | 19 | 1949 | 37 | 1979 | 55 | 1963 | 60/39 |

- # - INDICATES THE EXTREME TEMPERATURE FOR ENTIRE PERIOD OF RECORD.
() - INDICATES THE MONTHLY EXTREME.
* - AND IN PREVIOUS YEARS.

FEBRUARY

TEMPERATURE EXTREMES - 1937 TO 2004
DAILY NORMALS - 1971 TO 2000

| DATE | HI MAX | LAST OCCURD | LO MIN | LAST OCCURD | LO MAX | LAST OCCURD | HI MIN | LAST OCCURD | NORMAL MAX/MIN |
|------|-----------|----------------|-----------|----------------|-----------|----------------|-----------|----------------|-------------------|
| 1 | 81 | 2003 | 17 | 1937 | 37 | 1985 | 58 | 1963 | 60/39 |
| 2 | 77 | 1995 | 22 | 1951 | 35 | 1985 | 50 | 1952 | 60/39 |
| 3 | 75 | 1995 | 19 | 1972 | 38 | 1939 | 47 | 1992 | 60/39 |
| 4 | 76 | 1953 | 19 | 1948 | 43 | 1949 | 51 | 1976 | 61/39 |
| 5 | 78 | 1947 | 18 | 1939 | 39 | 1989 | 49 | 1996 | 61/40 |
| 6 | 78 | 1963 | 19 | 1989 | (34) | 1989 | 55 | 1950 | 61/40 |
| 7 | 77 | 1963 | (16) | 1989 | 36 | 1989 | 48 | 1993 | 61/40 |
| 8 | 76 | 1996 | 25 | 1949 | 36 | 1989 | 50 | 1976 | 62/40 |
| 9 | 77 | 1951 | 19 | 1946 | 45 | 1939 | 52 | 2000 | 62/40 |
| 10 | 74 | 1951 | 19 | 1946 | 39 | 1939 | 54 | 1962 | 62/41 |
| 11 | 79 | 1971 | 22 | 1939 | 44 | 1948 | 53 | 1962 | 62/41 |
| 12 | 75 | 1954 | 22 | 1965 | 46 | 1949 | 51 | 1996 | 63/41 |
| 13 | 79 | 1957 | 20 | 1949 | 42 | 1949 | 52 | 1954 | 63/41 |
| 14 | 78 | 1957 | 18 | 1949 | 42 | 1990 | 56 | 2000 | 63/41 |
| 15 | 77 | 1977 | 22 | 1949 | 45 | 1990 | 50 | 1945 | 63/41 |
| 16 | 79 | 1996 | 24 | 1949 | 46 | 1956 | 55 | 1991 | 63/42 |
| 17 | 81 | 1996 | 21 | 1956 | 49 | 1956 | 52 | 1996 | 64/42 |
| 18 | 81 | 1977 | 17 | 1938 | 48 | 1938 | 58 | 1986 | 64/42 |
| 19 | 82 | 1981 | 25 | 1952 | 45 | 1955 | 58 | 1986 | 64/42 |
| 20 | 79 | 1995 | 23 | 1942 | 43 | 1955 | 55 | 1996 | 64/42 |
| 21 | 80 | 1977 | 21 | 1955 | 47 | 1955 | 54 | 1996 | 64/43 |
| 22 | 77 | 1961 | 20 | 1953 | 51 | 1955 | 54 | 1995* | 65/43 |
| 23 | 79 | 2002 | 25 | 1953 | 47 | 1944 | 53 | 1957 | 65/43 |
| 24 | 82 | 1989 | 24 | 1955 | 49 | 1987 | 51 | 2002 | 65/43 |
| 25 | 85 | 1986 | 26 | 1960 | 40 | 1987 | 57 | 1989 | 65/43 |
| 26 | (87) | 1986 | 28 | 1971 | 40 | 1944 | (59) | 1989 | 65/44 |
| 27 | 83 | 1986 | 19 | 1971 | 39 | 1962 | 56 | 1940 | 65/44 |
| 28 | 82 | 1986 | 19 | 1962 | 45 | 1962 | 51 | 1978 | 66/44 |
| 29 | 76 | 1972 | 33 | 1996 | 47 | 1960 | 58 | 1972 | 66/44 |

() - INDICATES THE MONTHLY EXTREME.

* - AND IN PREVIOUS YEARS.

MARCH

TEMPERATURE EXTREMES - 1937 TO 2004
DAILY NORMALS - 1971 TO 2000

| DATE | HI MAX | LAST OCCURD | LO MIN | LAST OCCURD | LO MAX | LAST OCCURD | HI MIN | LAST OCCURD | NORMAL MAX/MIN |
|------|-----------|----------------|-----------|----------------|-----------|----------------|-----------|----------------|-------------------|
| 1 | 82 | 1986 | 23 | 1962 | (42) | 1971 | 56 | 1974 | 66/44 |
| 2 | 82 | 1967 | (19) | 1939 | 47 | 1951 | 57 | 1990 | 66/44 |
| 3 | 85 | 1972 | 23 | 1971 | 46 | 1976 | 60 | 1999 | 66/44 |
| 4 | 84 | 1972 | 25 | 1966 | 50 | 1966 | 58 | 1972 | 67/45 |
| 5 | 84 | 1972 | 26 | 1948 | 51 | 1976 | 53 | 1986 | 67/45 |
| 6 | 85 | 1972 | 24 | 1939 | 51 | 1964 | 54 | 1987 | 67/45 |
| 7 | 84 | 1972 | 27 | 1940 | 49 | 1964 | 53 | 1994 | 67/45 |
| 8 | 87 | 1989 | 26 | 1942 | 43 | 1952 | 62 | 1989 | 68/45 |
| 9 | 87 | 1989 | 27 | 1964 | 54 | 1969 | 61 | 1954 | 68/46 |
| 10 | 89 | 1972 | 29 | 1962 | 44 | 1969 | 59 | 1982 | 68/46 |
| 11 | 86 | 1989 | 26 | 1948 | 47 | 1958 | 65 | 1989 | 68/46 |
| 12 | 86 | 1989 | 27 | 1940 | 51 | 1990 | (66) | 1989 | 68/46 |
| 13 | 84 | 1966 | 25 | 1956 | 47 | 1969 | 57 | 1989 | 69/47 |
| 14 | 84 | 2004 | 27 | 1962 | 49 | 1944 | 64 | 2003 | 69/47 |
| 15 | 84 | 1994 | 26 | 1962 | 48 | 1991 | 59 | 2004 | 69/47 |
| 16 | 84 | 1994 | 31 | 1991 | 52 | 1963 | 62 | 1997 | 69/47 |
| 17 | 87 | 1947 | 30 | 1955 | 55 | 1963 | 64 | 1994 | 70/47 |
| 18 | 88 | 1972 | 30 | 1954 | 55 | 1982 | 64 | 1974 | 70/47 |
| 19 | 88 | 1939 | 31 | 1937 | 51 | 1979 | 58 | 2004* | 70/48 |
| 20 | 90 | 2004 | 34 | 1964 | 49 | 1991 | 58 | 2004* | 70/48 |
| 21 | (92) | 2004 | 26 | 1955 | 53 | 1952 | 62 | 2004 | 71/48 |
| 22 | 91 | 2004 | 28 | 1948 | 49 | 1973 | 61 | 2004 | 71/48 |
| 23 | 89 | 2004* | 32 | 1938 | 48 | 1964 | 71 | 2004 | 71/48 |
| 24 | 89 | 1940 | 34 | 1957 | 53 | 1995 | 66 | 1998 | 71/49 |
| 25 | 87 | 1981 | 31 | 1964 | 50 | 1977 | 63 | 2001 | 72/49 |
| 26 | 87 | 1947 | 34 | 1948 | 53 | 1975 | 65 | 1971 | 72/49 |
| 27 | 88 | 1988 | 33 | 1975 | 49 | 1991 | 60 | 1990 | 72/49 |
| 28 | 89 | 1986 | 31 | 1975 | 48 | 1975 | 57 | 1986 | 73/49 |
| 29 | 86 | 1966 | 33 | 1975 | 50 | 1998 | 60 | 1986 | 73/50 |
| 30 | 88 | 2004* | 33 | 1987 | 57 | 1938 | 59 | 1999 | 73/50 |
| 31 | 91 | 1966 | 25 | 1938 | 48 | 1949 | 58 | 1986 | 73/50 |

() - INDICATES THE MONTHLY EXTREME.

* - AND IN PREVIOUS YEARS.

APRIL

TEMPERATURE EXTREMES - 1937 TO 2004
DAILY NORMALS - 1971 TO 2000

| DATE | HI MAX | LAST OCCURD | LO MIN | LAST OCCURD | LO MAX | LAST OCCURD | HI MIN | LAST OCCURD | NORMAL MAX/MIN |
|------|-----------|----------------|-----------|----------------|-----------|----------------|-----------|----------------|-------------------|
| 1 | 92 | 1966 | 35 | 1948 | 55 | 1980 | 62 | 2003* | 74/50 |
| 2 | 95 | 1966 | (31) | 1975 | (48) | 1997 | 58 | 1966 | 74/51 |
| 3 | 91 | 1961 | (31) | 1955 | 52 | 1965 | 60 | 2002 | 74/51 |
| 4 | 94 | 1961 | (31) | 1945 | 51 | 1965 | 63 | 1989 | 75/51 |
| 5 | 94 | 1960 | 32 | 1945 | 59 | 1965 | 63 | 1972 | 75/51 |
| 6 | 95 | 1989 | 35 | 1945 | 60 | 1983 | 65 | 1991 | 75/51 |
| 7 | 98 | 1989 | 36 | 1939 | 53 | 1958 | 62 | 1960 | 76/52 |
| 8 | 98 | 1989 | 39 | 1983 | 56 | 1965 | 64 | 2000 | 76/52 |
| 9 | 95 | 1989 | 32 | 1953 | 54 | 1943 | 65 | 2000 | 76/52 |
| 10 | 91 | 1985 | 38 | 1950 | 55 | 1965 | 70 | 2002 | 76/52 |
| 11 | 88 | 2002 | 35 | 1965 | 54 | 1965 | 64 | 1989 | 77/53 |
| 12 | 91 | 1990 | 32 | 1967 | (48) | 1965 | 72 | 2002 | 77/53 |
| 13 | 93 | 1990 | 35 | 1967 | 58 | 1972 | 68 | 2000 | 77/53 |
| 14 | 95 | 2002 | 38 | 1983 | 57 | 1939 | 66 | 2002 | 78/53 |
| 15 | 97 | 1947 | 34 | 1939 | 56 | 1998 | 64 | 1994 | 78/54 |
| 16 | 95 | 1989 | 39 | 1998* | 55 | 1976 | 66 | 1962 | 78/54 |
| 17 | 97 | 1989 | 40 | 1976 | 56 | 1963 | 69 | 1989 | 79/54 |
| 18 | 98 | 1946 | 35 | 1963 | 60 | 1995 | 68 | 1994 | 79/54 |
| 19 | 98 | 1938 | 35 | 1968 | 60 | 1972 | 65 | 1994 | 79/55 |
| 20 | 97 | 1994 | 34 | 1966 | 62 | 1967 | 69 | 1989 | 79/55 |
| 21 | 98 | 1950 | 37 | 1966 | 52 | 1957 | 71 | 1989 | 80/55 |
| 22 | 97 | 1939 | 33 | 1963 | 57 | 2003 | 70 | 1950 | 80/56 |
| 23 | 98 | 1949 | 36 | 1937 | 58 | 1999 | 62 | 1986 | 80/56 |
| 24 | (99) | 1946 | 38 | 1937 | 58 | 1999* | (74) | 1943 | 81/56 |
| 25 | 96 | 1946 | 37 | 1960 | 64 | 1971 | 69 | 1996 | 81/56 |
| 26 | 97 | 1996 | 42 | 1967 | 60 | 1963 | 67 | 1981 | 81/57 |
| 27 | (99)* | 2000 | 39 | 1984 | 59 | 1970 | 70 | 1996 | 82/57 |
| 28 | 95 | 1992 | 39 | 1955 | 55 | 1970 | 71 | 1943 | 82/57 |
| 29 | 96 | 1981 | 35 | 1970 | 56 | 1999 | 67 | 1986 | 82/58 |
| 30 | (99) | 1981 | 38 | 1967 | 56 | 1999 | 70 | 1992 | 82/58 |

() - INDICATES THE MONTHLY EXTREME.

* - AND IN PREVIOUS YEARS.

MAY

TEMPERATURE EXTREMES - 1937 TO 2004 DAILY NORMALS - 1971 TO 2000

| DATE | HI MAX | LAST OCCURD | LO MIN | LAST OCCURD | LO MAX | LAST OCCURD | HI MIN | LAST OCCURD | NORMAL MAX/MIN |
|------|-----------|----------------|-----------|----------------|-----------|----------------|-----------|----------------|-------------------|
| 1 | 102 | 1947 | 41 | 1967 | 62 | 1955 | 67 | 1965 | 83/58 |
| 2 | 107 | 1947 | 43 | 1955 | 65 | 1955 | 72 | 1981 | 83/59 |
| 3 | 108 | 1947 | (38) | 1942 | 67 | 1950 | 70 | 1985 | 83/59 |
| 4 | 108 | 1947 | 40 | 1959 | 67 | 1964 | 74 | 2004 | 84/59 |
| 5 | 108 | 1947 | 40 | 1950 | 65 | 1973 | 75 | 2004 | 84/59 |
| 6 | 103 | 1947 | 43 | 1964 | 63 | 1964 | 71 | 2000 | 84/60 |
| 7 | 102 | 1989 | 41 | 1938 | 62 | 1964 | 73 | 2004* | 85/60 |
| 8 | 102 | 1989 | 42 | 1964 | (60) | 1979 | 74 | 1989 | 85/60 |
| 9 | 100 | 2001 | 42 | 1938 | 69 | 2003 | 70 | 2001 | 85/61 |
| 10 | 102 | 1940 | 41 | 1948 | 68 | 1991 | 75 | 2001 | 86/61 |
| 11 | 103 | 1960 | 47 | 1938 | 63 | 1989 | 70 | 2001* | 86/61 |
| 12 | 104 | 1996 | 45 | 1963 | 67 | 1961 | 74 | 1993 | 86/62 |
| 13 | 103 | 1996 | 45 | 1953 | 66 | 1998 | 75 | 1994 | 87/62 |
| 14 | 106 | 1937 | 45 | 1998 | 66 | 1962 | 77 | 1997 | 87/62 |
| 15 | 107 | 1937 | 44 | 1968 | 61 | 1951 | 74 | 1997 | 87/63 |
| 16 | 107 | 1937 | 43 | 1953 | 67 | 1962 | 74 | 1997 | 88/63 |
| 17 | 102 | 1937 | 43 | 1962 | 71 | 1977 | 78 | 1997 | 88/63 |
| 18 | 103 | 1973 | 45 | 1977 | 72 | 1949 | 73 | 2002 | 88/64 |
| 19 | 102 | 1958 | 47 | 1974 | 63 | 1974 | 72 | 1979 | 89/64 |
| 20 | 102 | 1984 | 46 | 1975 | 69 | 1975 | 74 | 1968 | 89/64 |
| 21 | 104 | 1942 | 42 | 1975 | 66 | 1957 | 76 | 2001 | 89/64 |
| 22 | 108 | 2000 | 45 | 1975 | 73 | 1971 | 73 | 1989 | 90/65 |
| 23 | 107 | 2000 | 48 | 1980 | 69 | 1957 | 77 | 2000 | 90/65 |
| 24 | 105 | 2001 | 46 | 1939 | 61 | 1965 | 81 | 2000 | 91/65 |
| 25 | 105 | 2001 | 47 | 1977 | 69 | 1996 | 77 | 2001 | 91/66 |
| 26 | (109) | 1951 | 50 | 1980 | 74 | 1998* | 79 | 2001 | 91/66 |
| 27 | 108 | 1974 | 44 | 1953 | 73 | 1971 | 80 | 2001 | 92/66 |
| 28 | (109) | 2003 | 50 | 1971 | 64 | 1971 | (89) | 2003 | 92/67 |
| 29 | 108 | 1984 | 46 | 1953 | 66 | 1971 | 83 | 2000 | 93/67 |
| 30 | 106 | 2002* | 48 | 1971 | 74 | 1988 | 83 | 2003 | 93/67 |
| 31 | 104 | 2002* | 47 | 1937 | 68 | 1991 | 82 | 1997 | 93/68 |

() - INDICATES THE MONTHLY EXTREME.

* - AND IN PREVIOUS YEARS.

JUNE

TEMPERATURE EXTREMES - 1937 TO 2004 DAILY NORMALS - 1971 TO 2000

| DATE | HI MAX | LAST OCCURD | LO MIN | LAST OCCURD | LO MAX | LAST OCCURD | HI MIN | LAST OCCURD | NORMAL MAX/MIN |
|------|-----------|----------------|-----------|----------------|-----------|----------------|-----------|----------------|-------------------|
| 1 | 107 | 2001 | 50 | 1991 | 74 | 1955 | 80 | 2002 | 94/68 |
| 2 | 107 | 2003 | 49 | 1955 | 76 | 1999 | 80 | 2003* | 94/68 |
| 3 | 107 | 1957 | 53 | 1961 | 69 | 1949 | 81 | 2003 | 95/69 |
| 4 | 109 | 1996* | 50 | 1999 | (67) | 1999 | 80 | 2003 | 95/69 |
| 5 | 108 | 1996 | 51 | 1993 | 75 | 1993 | 83 | 2003 | 96/69 |
| 6 | 108 | 2002* | (48) | 1993 | 70 | 1993 | 80 | 2004 | 96/70 |
| 7 | 108 | 1955 | 52 | 1954 | 68 | 1995 | 85 | 2002 | 96/70 |
| 8 | 111 | 1955 | 52 | 1995 | 76 | 1995 | 81 | 2002 | 97/70 |
| 9 | 111 | 1985 | 50 | 1950 | 75 | 1954 | 83 | 2001 | 97/71 |
| 10 | 108 | 1996 | 51 | 1954 | 75 | 1957 | 80 | 2001 | 97/71 |
| 11 | 109 | 1956 | 55 | 1976 | 83 | 1976 | 81 | 1996 | 98/71 |
| 12 | 112 | 1940 | 52 | 1937 | 82 | 1943 | 81 | 1994 | 98/71 |
| 13 | 114 | 1940 | 49 | 1938 | 77 | 1997 | 82 | 1985 | 98/72 |
| 14 | 115 | 1940 | 55 | 1943 | 75 | 1997 | 83 | 1979 | 99/72 |
| 15 | (116) | 1940 | 52 | 1962 | 80 | 1962 | 83 | 1989 | 99/72 |
| 16 | 114 | 1940 | 53 | 1944 | 70 | 1995 | 87 | 2000 | 99/73 |
| 17 | 113 | 1940 | 50 | 1944 | 79 | 1995 | 80 | 2000* | 100/73 |
| 18 | 115 | 1940 | 49 | 1939 | 82 | 1979 | 82 | 2000 | 100/73 |
| 19 | 114 | 1940 | 56 | 1939 | 85 | 1975 | 83 | 1997 | 100/73 |
| 20 | 113 | 1961 | 53 | 1939 | 86 | 1975 | 84 | 1996 | 101/74 |
| 21 | 111 | 1954 | 53 | 1941 | 86 | 1947 | 83 | 1999 | 101/74 |
| 22 | 115 | 1954 | 56 | 1944 | 91 | 1976 | 84 | 2001 | 101/74 |
| 23 | 113 | 1959 | 55 | 1944 | 86 | 1963 | 83 | 1954 | 101/74 |
| 24 | 113 | 1961 | 56 | 1963 | 86 | 2003 | 83 | 1981 | 101/75 |
| 25 | 115 | 1970 | 55 | 1941 | 86 | 1975 | 86 | 1974 | 102/75 |
| 26 | 114 | 1970 | 56 | 1944 | 81 | 1965 | 86 | 1994 | 102/75 |
| 27 | 114 | 1977 | 59 | 1941 | 83 | 1991 | 86 | 1994 | 102/75 |
| 28 | 115 | 1994 | 55 | 1941 | 91 | 1991 | 87 | 1994 | 102/75 |
| 29 | 115 | 1994 | 60 | 1941 | 85 | 1938 | 87 | 1977 | 103/76 |
| 30 | 115 | 1994 | 60 | 1970 | 83 | 1982 | (89) | 1994 | 103/76 |

() - INDICATES THE MONTHLY EXTREME.

* - AND IN PREVIOUS YEARS.

JULY

TEMPERATURE EXTREMES - 1937 TO 2004
DAILY NORMALS - 1971 TO 2000

| DATE | HI MAX | LAST OCCURD | LO MIN | LAST OCCURD | LO MAX | LAST OCCURD | HI MIN | LAST OCCURD | NORMAL MAX/MIN |
|------|-----------|----------------|-----------|----------------|-----------|----------------|-----------|----------------|-------------------|
| 1 | 116 | 1972 | 58 | 1938 | 88 | 1980 | 90 | 1994 | 103/76 |
| 2 | 115 | 1950 | 62 | 1943 | 93 | 1980 | 89 | 2002 | 103/76 |
| 3 | 116 | 1937 | 60 | 1943 | (81) | 1961 | 89 | 1996 | 103/77 |
| 4 | 115 | 1985 | 60 | 1941 | 89 | 1949 | 85 | 1986 | 103/77 |
| 5 | 116 | 1985 | 60 | 1938 | 89 | 1937 | 86 | 1981 | 103/77 |
| 6 | 115 | 1989 | 63 | 1939 | 84 | 1950 | 90 | 1957 | 104/77 |
| 7 | 114 | 1989 | 62 | 1939 | 92 | 1950 | 83 | 1996* | 104/77 |
| 8 | 113 | 1989 | 60 | 1938 | (81) | 1992 | 91 | 1989 | 104/78 |
| 9 | 113 | 1943 | 63 | 1938 | 89 | 1999 | 86 | 1996 | 104/78 |
| 10 | 114 | 2003* | 64 | 1948 | 91 | 1974 | 89 | 2002 | 104/78 |
| 11 | 116 | 1959 | 62 | 1944 | 87 | 1989 | 89 | 2002 | 104/78 |
| 12 | 114 | 2003* | 62 | 1937 | 87 | 1999 | 85 | 1985 | 104/78 |
| 13 | 115 | 1939 | 64 | 1944 | 85 | 1999 | 89 | 2003* | 104/78 |
| 14 | 116 | 1972 | 63 | 1952 | 94 | 1953 | 92# | 2002 | 104/78 |
| 15 | 114 | 1949 | 62 | 1944 | 89 | 1974 | 86 | 2002 | 104/78 |
| 16 | 116 | 1998 | 65 | 1944 | 91 | 1953 | 87 | 1977 | 104/78 |
| 17 | 115 | 1959 | 62 | 1940 | 90 | 1953 | 87 | 1997 | 105/79 |
| 18 | 115 | 1979 | 59 | 1940 | 85 | 1985 | 88 | 2003 | 105/79 |
| 19 | 115 | 1989 | (56) | 1937 | 90 | 1943 | 84 | 1990 | 105/79 |
| 20 | 113 | 1959 | 58 | 1940 | (81) | 1979 | 88 | 1989 | 105/79 |
| 21 | 113 | 1942 | (56) | 1940 | 86 | 1986 | 87 | 2003 | 105/79 |
| 22 | 114 | 1937 | 62 | 1943 | 85 | 1984 | 92# | 2003 | 105/79 |
| 23 | 115 | 1942 | 61 | 1938 | 89 | 1998* | 92# | 2003 | 105/79 |
| 24 | 117# | 1942 | 64 | 1957 | 86 | 1965 | 87 | 2002 | 105/79 |
| 25 | 115 | 1942 | 66 | 1944 | 87 | 1954 | 86 | 1980 | 104/79 |
| 26 | 116 | 1943 | 65 | 1944 | 91 | 1950 | 87 | 2000 | 104/79 |
| 27 | 115 | 1943 | 63 | 1944 | 90 | 1969 | 86 | 1995 | 104/79 |
| 28 | 114 | 1995 | 61 | 1984 | 84 | 1984 | 87 | 2003* | 104/79 |
| 29 | 115 | 1995 | 64 | 1984 | 92 | 1999 | 88 | 1980 | 104/79 |
| 30 | 114 | 1978 | 64 | 1941 | 87 | 1976 | 87 | 1972 | 104/79 |
| 31 | 115 | 1978 | 65 | 1940 | 92 | 2003 | 86 | 1995 | 104/79 |

- INDICATES THE EXTREME TEMPERATURE FOR ENTIRE PERIOD OF RECORD.
 () - INDICATES THE MONTHLY EXTREME.
 * - AND IN PREVIOUS YEARS.

AUGUST

TEMPERATURE EXTREMES - 1937 TO 2004
DAILY NORMALS 1971 TO 2000

| DATE | HI MAX | LAST OCCURD | LO MIN | LAST OCCURD | LO MAX | LAST OCCURD | HI MIN | LAST OCCURD | NORMAL MAX/MIN |
|------|-----------|----------------|-----------|----------------|-----------|----------------|-----------|----------------|-------------------|
| 1 | (116) | 1979 | 66 | 1940 | 86 | 2003 | 86 | 2000* | 104/79 |
| 2 | 115 | 1979 | 55 | 1937 | 94 | 1991 | 88 | 2000* | 104/79 |
| 3 | (116) | 1979 | (54) | 1937 | 81 | 1951 | 87 | 1980 | 104/79 |
| 4 | 114 | 1979 | 58 | 1937 | 82 | 1970 | 86 | 1995 | 104/78 |
| 5 | 113 | 1969 | 63 | 1953 | 89 | 1992 | 85 | 2000* | 104/78 |
| 6 | 114 | 1978 | 64 | 1950 | 95 | 1963 | 88 | 1994 | 103/78 |
| 7 | 111 | 1994 | 63 | 1950 | 92 | 1963 | 88 | 1997* | 103/78 |
| 8 | 114 | 1978 | 64 | 1957 | 91 | 1938 | 88 | 1995 | 103/78 |
| 9 | 114 | 1940 | 65 | 1951 | 87 | 1989 | 86 | 1975 | 103/78 |
| 10 | 115 | 1940 | 60 | 1937 | 82 | 1983 | 89 | 1995 | 103/78 |
| 11 | (116) | 1940 | 60 | 1948 | 86 | 1991 | 87 | 2003 | 103/78 |
| 12 | 115 | 1937 | 60 | 1949 | 82 | 1979 | (90) | 2003 | 103/78 |
| 13 | 113 | 1937 | 60 | 1949 | 83 | 1972 | 87 | 2000 | 103/77 |
| 14 | 111 | 2002 | 64 | 1984 | 89 | 1972 | 86 | 2003 | 102/77 |
| 15 | 111 | 2002 | 60 | 1938 | 85 | 1990 | 84 | 1992 | 102/77 |
| 16 | 113 | 1939 | 58 | 1938 | 84 | 1943 | 85 | 1992 | 102/77 |
| 17 | 111 | 1939 | 55 | 1938 | (74) | 1983 | 86 | 1994 | 102/77 |
| 18 | 111 | 1992 | 60 | 1944 | (74) | 1983 | 85 | 1973 | 102/77 |
| 19 | 111 | 1992 | 60 | 1938 | 81 | 1983 | 85 | 1992 | 101/76 |
| 20 | 110 | 1950 | 55 | 1938 | 78 | 1957 | 87 | 1992 | 101/76 |
| 21 | 109 | 1940 | 63 | 1957 | (74) | 1957 | 83 | 1994 | 101/76 |
| 22 | 110 | 1939 | 60 | 1968 | 86 | 1968 | 81 | 1986 | 101/76 |
| 23 | 109 | 1998* | 56 | 1947 | 88 | 1968 | 85 | 1998 | 101/76 |
| 24 | 110 | 1985 | 56 | 1968 | 80 | 1982 | 84 | 1998* | 100/75 |
| 25 | 110 | 1985 | 59 | 1944 | 84 | 1982 | 83 | 1998* | 100/75 |
| 26 | 109 | 2001 | 55 | 1943 | 91 | 1982 | 82 | 1998 | 100/75 |
| 27 | 109 | 2001 | 60 | 1943 | 90 | 1972 | 82 | 1994 | 100/75 |
| 28 | 110 | 1944 | 58 | 1945 | 84 | 1951 | 80 | 1958 | 100/75 |
| 29 | 110 | 1948 | 57 | 1947 | 82 | 2000 | 85 | 1998 | 99/74 |
| 30 | 112 | 1948 | 55 | 1947 | 80 | 2000 | 86 | 1981 | 99/74 |
| 31 | 112 | 1948 | 55 | 1942 | 86 | 1991 | 83 | 1985 | 99/74 |

() - INDICATES THE MONTHLY EXTREME.

* - AND IN PREVIOUS YEARS

SEPTEMBER

TEMPERATURE EXTREMES - 1937 TO 2004 DAILY NORMALS - 1971 TO 2000

| DATE | HI MAX | LAST OCCURD | LO MIN | LAST OCCURD | LO MAX | LAST OCCURD | HI MIN | LAST OCCURD | NORMAL MAX/MIN |
|------|-----------|----------------|-----------|----------------|-----------|----------------|-----------|----------------|-------------------|
| 1 | (113) | 1950 | 57 | 1942 | 80 | 1960 | (84) | 2002 | 99/74 |
| 2 | 110 | 1950 | 56 | 1964 | 79 | 1940 | 83 | 1958 | 98/73 |
| 3 | 108 | 1982 | 55 | 1946 | 78 | 1997 | 80 | 1969 | 98/73 |
| 4 | 111 | 1947 | 57 | 1941 | 79 | 1939 | 83 | 2002* | 98/73 |
| 5 | 109 | 1977 | 52 | 1940 | 80 | 1970 | 82 | 1995 | 97/72 |
| 6 | 110 | 1955 | 54 | 1970 | 70 | 1939 | 80 | 1989 | 97/72 |
| 7 | 108 | 1977 | 56 | 1938 | 79 | 1950 | 80 | 2003* | 97/72 |
| 8 | 110 | 1979 | 56 | 1965 | 84 | 1941 | 80 | 1995 | 96/71 |
| 9 | 108 | 1944 | 50 | 1941 | 81 | 1975 | 81 | 1999 | 96/71 |
| 10 | 108 | 1945 | 48 | 1941 | 79 | 1976 | 81 | 1994 | 96/71 |
| 11 | 109 | 1945 | 54 | 1952 | 77 | 1985 | 80 | 1960 | 96/71 |
| 12 | 108 | 1948 | 53 | 1985 | 80 | 1988 | 82 | 1993 | 95/70 |
| 13 | 109 | 1948 | 52 | 1952 | 83 | 1994 | 80 | 1960 | 95/70 |
| 14 | 107 | 1945 | 50 | 1941 | 82 | 1978 | 80 | 1960 | 95/70 |
| 15 | 107 | 2000* | 49 | 1941 | 83 | 1986 | 77 | 1955 | 94/69 |
| 16 | 107 | 1937 | 49 | 1941 | 80 | 1982 | 79 | 2003* | 94/69 |
| 17 | 108 | 1937 | 53 | 1941 | 71 | 1965 | 76 | 1944 | 93/68 |
| 18 | 108 | 1937 | 53 | 1965 | (67) | 1965 | 79 | 1980 | 93/68 |
| 19 | 104 | 1962 | 47 | 1965 | 70 | 1985 | 78 | 1962 | 93/68 |
| 20 | 103 | 1951 | 46 | 1965 | 72 | 1952 | 75 | 1981 | 92/67 |
| 21 | 104 | 1943 | 49 | 1978 | 75 | 1988 | 77 | 2000 | 92/67 |
| 22 | 104 | 1949 | 51 | 1944 | 72 | 1941 | 73 | 1992 | 92/67 |
| 23 | 104 | 1947 | 46 | 1941 | 73 | 1986 | 76 | 1992 | 91/66 |
| 24 | 106 | 1947 | 45 | 1941 | 69 | 1986 | 79 | 1992 | 91/66 |
| 25 | 106 | 1947 | 47 | 1945 | 68 | 1939 | 82 | 2002 | 90/65 |
| 26 | 105 | 1947 | 45 | 1948 | 75 | 1986 | 73 | 2002 | 90/65 |
| 27 | 104 | 1947 | (43) | 1948 | 68 | 1986 | 73 | 2002 | 90/65 |
| 28 | 103 | 1978 | 48 | 1971 | 68 | 1986 | 74 | 1994 | 89/64 |
| 29 | 102 | 1978 | 51 | 1940 | 75 | 1959 | 72 | 1957 | 89/64 |
| 30 | 101 | 1978 | 47 | 1982 | 69 | 1982 | 74 | 1969 | 88/63 |

() - INDICATES THE MONTHLY EXTREME.

* - AND IN PREVIOUS YEARS

OCTOBER

TEMPERATURE EXTREMES - 1937 TO 2004
DAILY NORMALS - 1971 TO 2000

| DATE | HI MAX | LAST OCCURD | LO MIN | LAST OCCURD | LO MAX | LAST OCCURD | HI MIN | LAST OCCURD | NORMAL MAX/MIN |
|------|-----------|----------------|-----------|----------------|-----------|----------------|-----------|----------------|-------------------|
| 1 | (103) | 1978 | 42 | 1971 | 69 | 1971 | (75) | 2003 | 88/63 |
| 2 | 100 | 1980 | 43 | 1971 | 59 | 2002 | 74 | 1997 | 88/63 |
| 3 | 99 | 1987 | 44 | 1950 | 71 | 1969 | 72 | 2003 | 87/62 |
| 4 | 100 | 1947 | 43 | 1940 | 69 | 1969 | 69 | 1979 | 87/62 |
| 5 | 99 | 1980 | 41 | 1937 | 65 | 1946 | 73 | 1988 | 86/61 |
| 6 | 98 | 1980 | 43 | 1969 | 71 | 1946 | 72 | 1990 | 86/61 |
| 7 | 99 | 1978 | 36 | 1941 | 68 | 1938 | 73 | 1960 | 85/60 |
| 8 | 98 | 1964 | 41 | 1941 | 59 | 1961 | 68 | 1991 | 85/60 |
| 9 | 97 | 1996* | 41 | 1949 | 61 | 1961 | 69 | 1963 | 84/60 |
| 10 | 97 | 1996* | 40 | 1961 | 64 | 1960 | 73 | 2003 | 84/59 |
| 11 | 95 | 1991 | 43 | 1961 | 65 | 1997 | 70 | 1980 | 83/59 |
| 12 | 97 | 1950 | 38 | 1946 | 63 | 1947 | 71 | 1991 | 83/58 |
| 13 | 95 | 1992 | 41 | 1946 | 66 | 1981 | 64 | 2003 | 82/58 |
| 14 | 96 | 1950 | 42 | 1981 | 65 | 1966 | 69 | 1992 | 82/57 |
| 15 | 94 | 1958 | 43 | 1966 | 66 | 1994 | 70 | 1950 | 81/57 |
| 16 | 96 | 1991 | 42 | 1984 | 60 | 1971 | 66 | 1950 | 81/57 |
| 17 | 94 | 1991 | 38 | 1938 | 57 | 1971 | 67 | 1991 | 81/56 |
| 18 | 95 | 1958 | 35 | 1938 | 60 | 1971 | 63 | 1991 | 80/56 |
| 19 | 96 | 1940 | 35 | 1946 | 57 | 1949 | 70 | 1958 | 80/55 |
| 20 | 95 | 1940 | 36 | 1943 | 58 | 1949 | 64 | 2003* | 79/55 |
| 21 | 94 | 2003 | 32 | 1949 | 59 | 2004 | 65 | 2001 | 78/54 |
| 22 | 92 | 2003 | 38 | 1996 | 54 | 1953 | 64 | 2003* | 78/54 |
| 23 | 94 | 1959 | 37 | 1953 | 60 | 1953 | 63 | 2003* | 77/53 |
| 24 | 92 | 1959 | 36 | 1953 | 60 | 1956 | 64 | 1983 | 77/53 |
| 25 | 92 | 1937 | 32 | 1945 | 64 | 1954 | 61 | 1950 | 76/53 |
| 26 | 90 | 1937 | 35 | 1945 | 56 | 1951 | 60 | 1950 | 76/52 |
| 27 | 92 | 1937 | 35 | 1939 | 58 | 1996 | 61 | 1950 | 75/52 |
| 28 | 91 | 1937 | 32 | 1970 | 53 | 1996 | 66 | 1999* | 75/51 |
| 29 | 90 | 1950 | 30 | 1971 | (50) | 1971 | 65 | 1988 | 74/51 |
| 30 | 87 | 1937 | (26) | 1971 | 52 | 1971 | 66 | 1950 | 74/50 |
| 31 | 86 | 1988 | 30 | 1971 | 51 | 1961 | 62 | 1990 | 73/50 |

() - INDICATES THE MONTHLY EXTREME.

* - AND IN PREVIOUS YEARS.

NOVEMBER

TEMPERATURE EXTREMES - 1937 TO 2004 DAILY NORMALS - 1971 TO 2000

| DATE | HI MAX | LAST OCCURD | LO MIN | LAST OCCURD | LO MAX | LAST OCCURD | HI MIN | LAST OCCURD | NORMAL MAX/MIN |
|------|-----------|----------------|-----------|----------------|-----------|----------------|-----------|----------------|-------------------|
| 1 | (87) | 1988 | 33 | 1971 | 59 | 1956 | 60 | 1988 | 73/49 |
| 2 | 84 | 1937 | 28 | 1943 | 56 | 1974 | 57 | 1953 | 72/49 |
| 3 | 85 | 1976 | 26 | 1943 | 52 | 1994 | 58 | 1960 | 72/49 |
| 4 | 85 | 1988 | 26 | 1956 | 56 | 1957 | 59 | 2001 | 71/48 |
| 5 | 84 | 1980 | 28 | 1940 | 50 | 1957 | 60 | 2001 | 71/48 |
| 6 | 85 | 1988 | 27 | 1940 | 57 | 1938 | 57 | 1970 | 70/47 |
| 7 | 83 | 1991 | 23 | 1938 | 60 | 1986 | 57 | 2001 | 70/47 |
| 8 | 83 | 1950 | 24 | 1938 | 55 | 1946 | (62) | 2002 | 69/47 |
| 9 | 82 | 1978 | 26 | 1945 | 55 | 1966 | 58 | 2002 | 69/46 |
| 10 | 81 | 1990 | 27 | 1948 | 52 | 1950 | 60 | 1978 | 68/46 |
| 11 | 85 | 1973 | 24 | 1950 | 51 | 2000 | 58 | 1980 | 68/45 |
| 12 | 81 | 1973 | 24 | 1950 | 48 | 1985 | (62) | 1983 | 67/45 |
| 13 | 81 | 1953 | 16 | 1938 | 49 | 1985 | (62) | 1981 | 67/45 |
| 14 | 81 | 1995 | 22 | 1938 | 45 | 1964 | 61 | 1981 | 66/44 |
| 15 | 82 | 1981 | 24 | 1938 | 47 | 1964 | 54 | 1942 | 66/44 |
| 16 | 78 | 1977 | 24 | 1938 | (42) | 1964 | 51 | 1981 | 65/44 |
| 17 | 79 | 1981 | 28 | 1958 | 43 | 1964 | 58 | 1999 | 65/43 |
| 18 | 79 | 1949 | 23 | 1958 | 48 | 1964 | 58 | 1942 | 65/43 |
| 19 | 78 | 1976 | 24 | 1985 | 46 | 1985 | 55 | 1950 | 64/43 |
| 20 | 76 | 1976 | 23 | 1956 | 46 | 1953 | 54 | 1946 | 64/42 |
| 21 | 77 | 1976 | 24 | 1945 | 48 | 2004 | 57 | 1996 | 63/42 |
| 22 | 77 | 1976 | 24 | 1941 | 50 | 2004 | 55 | 1996 | 63/42 |
| 23 | 76 | 1995* | 24 | 1941 | 48 | 1952 | 50 | 1965 | 63/41 |
| 24 | 81 | 1949 | (15) | 1938 | 47 | 2003 | 50 | 1998* | 62/41 |
| 25 | 76 | 1970 | 18 | 1938 | 47 | 1988 | 48 | 1985 | 62/41 |
| 26 | 75 | 1997* | 24 | 1944 | 49 | 1984 | 50 | 1989 | 62/40 |
| 27 | 79 | 1954 | 21 | 1952 | 45 | 1984 | 48 | 1977 | 61/40 |
| 28 | 73 | 1977 | 19 | 1938 | 48 | 1976 | 48 | 1939 | 61/40 |
| 29 | 74 | 2000 | 21 | 1948 | 49 | 2004* | 47 | 2002* | 61/40 |
| 30 | 79 | 1980 | 22 | 1948 | 47 | 2004 | 50 | 1961 | 60/39 |

() - INDICATES THE MONTHLY EXTREME.

* - AND IN PREVIOUS YEARS

DECEMBER

TEMPERATURE EXTREMES - 1937 TO 2004
DAILY NORMALS - 1971 TO 2000

| DATE | HI MAX | LAST OCCURD | LO MIN | LAST OCCURD | LO MAX | LAST OCCURD | HI MIN | LAST OCCURD | NORMAL MAX/MIN |
|------|-----------|----------------|-----------|----------------|-----------|----------------|-----------|----------------|-------------------|
| 1 | 74 | 1940 | 26 | 1957 | 51 | 2004* | 52 | 1999 | 60/39 |
| 2 | (78) | 1940 | 24 | 1948 | 51 | 1991 | 54 | 1966 | 60/39 |
| 3 | 77 | 1980 | 23 | 1948 | 48 | 1984 | 46 | 1966 | 60/39 |
| 4 | 76 | 1939 | 24 | 1948 | 50 | 1992 | 52 | 1980 | 59/38 |
| 5 | 76 | 1938 | 18 | 1948 | 42 | 1972 | 52 | 1956 | 59/38 |
| 6 | 76 | 1938 | 23 | 1942 | 41 | 1978 | 55 | 1966 | 59/38 |
| 7 | 76 | 1938 | 21 | 1948 | 39 | 1978 | 56 | 2003 | 59/38 |
| 8 | 77 | 1939 | 23 | 1978 | 38 | 1978 | 48 | 1988 | 58/37 |
| 9 | 71 | 1975 | 16 | 1956 | 37 | 1972 | 51 | 1970 | 58/37 |
| 10 | 74 | 1950 | 20 | 1972 | (32) | 1972 | 52 | 1996 | 58/37 |
| 11 | 72 | 1939 | 21 | 1972 | 36 | 1972 | 50 | 1996 | 58/37 |
| 12 | 74 | 1958 | 15 | 1949 | 34 | 1972 | 51 | 1995 | 58/37 |
| 13 | 70 | 1952 | 19 | 1949 | 35 | 1967 | 55 | 1995 | 57/37 |
| 14 | 72 | 1942 | 16 | 1945 | 36 | 1967 | 46 | 1995 | 57/36 |
| 15 | 75 | 1980 | 14 | 1940 | 40 | 1987 | 54 | 1998 | 57/36 |
| 16 | 74 | 1980 | 23 | 1964 | 41 | 1940 | 49 | 2002 | 57/36 |
| 17 | 71 | 1942 | 20 | 1945 | 43 | 1967 | 46 | 1952 | 57/36 |
| 18 | 72 | 1939 | 22 | 1945 | 42 | 1984 | 48 | 1962 | 57/36 |
| 19 | 68 | 1942 | 22 | 1945 | 42 | 1970 | 48 | 1943 | 56/36 |
| 20 | 73 | 1981 | 14 | 1945 | 42 | 1990 | 49 | 1943 | 56/36 |
| 21 | 68 | 1950 | 20 | 1990 | 35 | 1990 | 51 | 1981 | 56/36 |
| 22 | 68 | 1950 | 12 | 1990 | 34 | 1990 | 49 | 1982 | 56/36 |
| 23 | 74 | 1955 | (11) | 1990 | 33 | 1990 | 44 | 2003* | 56/36 |
| 24 | 70 | 1942 | 14 | 1990 | 39 | 1990 | (57) | 1955 | 56/36 |
| 25 | 69 | 1964 | 17 | 1948 | 40 | 1962 | 50 | 1955 | 56/36 |
| 26 | 73 | 1980 | 20 | 1962 | 39 | 1941 | 48 | 1983 | 56/36 |
| 27 | 70 | 1980 | 19 | 1988 | 36 | 1941 | 49 | 1955 | 56/35 |
| 28 | 73 | 1980 | 20 | 1954 | 42 | 1988 | 47 | 1980 | 56/35 |
| 29 | 73 | 1980 | 23 | 1962 | 43 | 1982 | 52 | 1951 | 56/35 |
| 30 | 70 | 1980 | 15 | 1990 | 40 | 1990 | 48 | 1996* | 56/35 |
| 31 | 74 | 1995 | 18 | 1990 | 45 | 1975 | 48 | 2004 | 56/36 |

() - INDICATES THE MONTHLY EXTREME.

* - AND IN PREVIOUS YEARS

TOP 10 WETTEST AND DRIEST YEARS AND OVERALL MONTHS

10 WETTEST MONTHS

* 4.80.....MAR 1992
* 3.39.....SEP 1939
* 3.00.....JAN 1995
* 2.89.....FEB 1998
* 2.59.....AUG 1957
2.52.....FEB 1993
2.49.....FEB 1976
* 2.48.....JUL 1984
* 2.44.....APR 1965
2.25.....FEB 1980

10 DRIEST MONTHS

0.00 MANY TIMES

* INDICATES WETTEST ALL TIME FOR THAT PARTICULAR MONTH

10 WETTEST YEARS

10.72.....1941
9.88.....1992
7.96.....1965
7.76.....2004
7.65.....1978
7.35.....1998
7.30.....1939
6.86.....2003
6.85.....1984
6.79.....1979

10 DRIEST YEARS

0.56.....1953
0.76.....1948#
1.11.....1968
1.12.....1964
1.27.....1985
1.44.....2002
1.45.....1962
1.91.....1966
2.04.....1956
2.11.....1989

INTERRUPTED DURING MOVE

TOP 10 WETTEST AND DRIEST MONTHS BY MONTH

10 WETTEST MONTHS (BY MONTH)

JANUARY

3.00.....1995
2.41.....1949
2.18.....1979
2.07.....2005
2.00.....1974
1.63.....1993
1.57.....1969
1.55.....1939
1.45.....1980
1.40.....1955

FEBRUARY

2.89.....1998
2.52.....1993
2.49.....1976
2.25.....1980
2.21.....2001
2.13.....2003
1.64.....1973
1.59.....2000
1.58.....1941
1.51.....1978

MARCH

4.80.....1992
1.83.....1973
1.63.....1941
1.58.....1945
1.50.....1952
1.44.....1981
1.17.....1938
1.13.....1978
1.07.....1975
1.03.....1998

APRIL

2.44.....1965
1.68.....1941
0.92.....2004
0.85.....1943
0.76.....1988
0.73.....1999
0.64.....1958
0.57.....1952
0.55.....1939
0.55.....1957

10 DRIEST MONTHS (BY MONTH)

JANUARY

0.00.....1976 (MOST RECENT)
TRACE....2002 (MOST RECENT)

FEBRUARY

0.00.....1977 (MOST RECENT)
TRACE....2002 (MOST RECENT)

MARCH

0.00.....1997 (MOST RECENT)
TRACE....1999 (MOST RECENT)

APRIL

0.00.....2002/1996/1962
TRACE....2000 (MOST RECENT)

10 WETTEST AND DRIEST MONTHS BY MONTH (CONT)

MAY

0.96.....1969
 0.90.....1987
 0.84.....1971
 0.72.....1977
 0.64.....1989
 0.54.....1978
 0.50.....1981
 0.46.....1972
 0.40.....1965
 0.35.....1979/1975

MAY

0.00.....2004 (MOST RECENT)
 TRACE....2000 (MOST RECENT)

JUNE

0.97.....1990
 0.82.....1967
 0.39.....1955
 0.32.....1972
 0.31.....1968
 0.23.....1938
 0.23.....1969
 0.22.....1984
 0.19.....1991
 0.18.....1970

JUNE

0.00.....2003 (MOST RECENT)
 TRACE....2004 (MOST RECENT)

JULY

2.48.....1984
 2.18.....1999
 1.95.....1976
 1.68.....1945
 1.64.....1956
 1.61.....1954
 1.55.....1955
 1.34.....1950
 1.08.....2003
 0.93.....1941

JULY

0.00.....1993 (MOST RECENT)
 TRACE....2000 (MOST RECENT)

AUGUST

2.59.....1957
 2.12.....1979
 1.79.....1970
 1.77.....1942
 1.75.....1941
 1.74.....1955
 1.38.....1977
 1.25.....1983
 0.99.....1984
 0.90.....1971

AUGUST

0.00.....2002 (MOST RECENT)
 TRACE....1996 (MOST RECENT)

10 WETTEST AND DRIEST MONTHS BY MONTH (CONT)

SEPTEMBER

3.39.....1939
2.06.....1997
1.58.....1963
1.29.....1998
1.17.....1975
1.09.....1976
1.03.....1967
0.98.....1951
0.88.....1940
0.87.....1952
0.63.....1972

SEPTEMBER

0.00.....2000 (MOST RECENT)
TRACE....2001 (MOST RECENT)

OCTOBER

1.22.....1992
1.13.....1941
1.13.....1947
1.12.....1972
0.92.....2000
0.70.....1976
0.66.....1946
0.63.....1958
0.62.....1978
0.61.....1974/1963

OCTOBER

0.00.....2003 (MOST RECENT)
TRACE....1999 (MOST RECENT)

NOVEMBER

2.22.....1965
1.88.....1960
1.80.....1987
1.71.....2004
1.52.....1967
1.09.....1959
1.09.....1972
1.04.....1946
0.96.....1958
0.94.....1984

NOVEMBER

0.00.....1999 (MOST RECENT)
TRACE....2000 (MOST RECENT)

DECEMBER

2.10.....2004
1.78.....1940
1.71.....1992
1.68.....1984
1.38.....1959
1.34.....1943
1.15.....1978
1.06.....1977
1.00.....1965
0.96.....2003/1947

DECEMBER

0.00.....1981 (MOST RECENT)
TRACE....1999 (MOST RECENT)

MEASURABLE PRECIPITATION DAYS AND EXTREMES

**NORMAL (.01 DAYS)
(1971-2000)**

JAN.....3.4
 FEB.....3.3
 MAR.....3.6
 APR.....1.8
 MAY.....1.6
 JUN.....0.7
 JUL.....2.6
 AUG.....3.0
 SEP.....1.7
 OCT.....1.8
 NOV.....1.8
 DEC.....3.1

**YEARLY
 AVG.....28.5**

**MOST EVER (.01 DAYS)
(1937-2004)**

13.....1995
 12.....1998
 12.....1973
 8.....1965
 4.....1995 (MOST RECENT)
 3.....1972/1967/1949
 8.....1984/1976
 9.....1983
 8.....1967/1939
 8.....1946
 6.....1978/1965/1946
 9.....1992/1984

**NORMAL (.10 DAYS)
(1971-2000)**

JAN.....1.8
 FEB.....1.7
 MAR.....1.5
 APR.....0.5
 MAY.....0.6
 JUN.....0.3
 JUL.....1.0
 AUG.....1.1
 SEP.....0.7
 OCT.....0.7
 NOV.....0.7
 DEC.....1.3

**YEARLY
 AVG.....11.9**

**MOST EVER (.10 DAYS)
(1937-2004)**

7.....1979/1949
 8.....1998
 9.....1992
 6.....1965
 3.....1977
 2.....1990 (MOST RECENT)
 5.....1950
 4.....1983/1972
 5.....1939
 4.....2000/1974
 3.....2004 (MOST RECENT)
 6.....1943

CONSECUTIVE WET AND DRY DAYS

CONSECUTIVE WET DAYS (0.01 INCH OR GREATER)@

6.....2/24/2003
6.....4/06/1943
5.....1/12/1993
5.....8/06/1983
5.....1/04/1974
5.....1/09/1949
5.....2/27/1938

CONSECUTIVE DAYS WITH A TRACE OR BETTER @

9.....2/05/1978
9.....7/23/1952
9.....2/14/1941
7.....8/18/1999
7.....9/03/1998
7.....1/12/1993
7.....4/06/1965
7.....7/30/1947

@Dates are first day of occurrence

CONSECUTIVE DRY DAYS*

101.....7/02/1944-10/10/1944 AND 9/02/1995-12/11/1995
100.....3/25/2002-7/02/2002
84.....5/02/1978-7/24/1978

CONSECUTIVE DAYS WITHOUT MEASURABLE PRECIPITATION**

150.....2/22/1959-7/21/1959
146.....3/09/2000-8/01/2000
145.....5/31/1944-10/22/1944
143.....2/12/1950-7/04/1950
140.....9/22/1999-2/09/2000

*Dry days are defined as having less than a trace (T) of precipitation.

**Measurable precipitation is defined as a hundredth (0.01) or greater.

PRECIPITATION RECORDS

(MAXIMUM MONTHLY 24 HOUR PRECIPITATION)

| | |
|-----------|---------------|
| JANUARY | 1.09.....1990 |
| FEBRUARY | 1.30.....1993 |
| MARCH | 1.27.....1992 |
| APRIL | 0.97.....1965 |
| MAY | 0.83.....1983 |
| JUNE | 0.97.....1990 |
| JULY | 1.36.....1984 |
| AUGUST | 2.59.....1957 |
| SEPTEMBER | 1.12.....1939 |
| OCTOBER | 1.09.....1992 |
| NOVEMBER | 1.78.....1960 |
| DECEMBER | 2.10.....2004 |

MOST PRECIPITATION IN 24 HOURS

| | |
|-----------|---------------|
| 2.59..... | 8/20-21/1957 |
| 2.10..... | 12/28-29/2004 |
| 1.78..... | 11/05-06/1960 |
| 1.75..... | 8/09-10/1942 |
| 1.56..... | 8/12/1979 |
| 1.36..... | 7/28/1984 |
| 1.34..... | 8/16-17/1977 |
| 1.32..... | 8/03-04/1955 |
| 1.32..... | 7/24/1956 |
| 1.30..... | 2/07-08/1993 |

10 COLDEST AND HOTTEST YEARS AND OVERALL MONTHS

10 COLDEST YEARS

64.1.....1941
64.2.....1949
64.3.....1937
64.3.....1938
64.6.....1948
64.8.....1955
64.8.....1964
64.8.....1971
65.0.....1951
65.1.....1939/65/82

10 HOTTEST YEARS

70.0.....2003
69.7.....2000
69.6.....2001
69.4.....2004
69.4.....1996
69.2.....1981
69.0.....1994
69.0.....1995
68.9.....2002
68.7.....1989

10 HOTTEST YEARS FOR MAXIMUM TEMPERATURE

83.0.....1940
83.0.....1947
82.8.....1943
82.3.....1942
82.3.....1977
82.0.....1989
81.9.....1950
81.9.....1981
81.7.....1937
81.7.....1946

10 HOTTEST YEARS FOR MINIMUM TEMPERATURE

59.4.....2003
59.0.....2004
58.6.....2000
58.6.....2001
57.5.....1996
57.5.....1997
57.4.....2002
57.3.....1994
57.2.....1995
57.0.....1999

10 COLDEST YEARS FOR MAXIMUM TEMPERATURE

77.0.....1982
77.5.....1983
77.6.....1998
77.8.....1965
78.0.....1971
78.3.....1964
78.4.....1984
78.5.....1949
78.6.....1975
78.6.....1957/1955

10 COLDEST YEARS FOR MINIMUM TEMPERATURE

47.2.....1937
47.8.....1938
48.3.....1948
48.9.....1939
49.6.....1941
49.7.....1942
50.2.....1949
50.3.....1944
50.4.....1945
50.4.....1940

10 COLDEST OVERALL MONTHS

31.2.....JAN 1937
32.4.....JAN 1949
40.2.....DEC 1990
40.8.....DEC 1968
40.9.....JAN 1973
41.0.....JAN 1960
41.0.....JAN 1974
41.1.....JAN 1955
41.1.....JAN 1963
41.1.....JAN 1979*

10 HOTTEST OVERALL MONTHS

94.8.....JUL 2003
94.5.....JUL 2002
93.4.....JUL 1959
93.4.....JUL 1989
93.2.....JUL 1997
93.1.....JUL 1972
93.0.....JUL 2004
92.9.....AUG 1994
92.8.....JUL 1971
92.7.....JUL 1981

* and previous years

10 COLDEST AND HOTTEST MONTHS BY MONTH

COLDEST

JANUARY

31.2.....1937
32.4.....1949
40.9.....1973
41.0.....1960
41.0.....1974
41.1.....1955
41.1.....1979
41.1.....1963
41.2.....1950
41.8.....1952

FEBRUARY

41.2.....1939
41.8.....1949
43.7.....1955
44.8.....1937
45.6.....1956
45.6.....1964
45.8.....1966
46.0.....1960
46.3.....1942
46.3.....1969

MARCH

50.4.....1948
50.4.....1952
50.7.....1973
51.3.....1962
52.1.....1948
52.2.....1954
52.3.....1964
52.6.....1977
52.7.....1991
53.0.....1969

APRIL

56.2.....1967
56.6.....1975
58.5.....1963
58.5.....1983
58.6.....1970
59.2.....1941
60.3.....1955
60.9.....1999
61.1.....1998
61.2.....1965

HOTTEST

JANUARY

54.2.....2003
51.7.....1986
51.4.....2005
51.4.....2000
51.1.....1981
50.5.....1999
50.4.....1953
49.5.....1980
49.3.....1994
48.8.....1956

FEBRUARY

58.6.....1995
55.9.....1991
55.8.....1963
55.8.....1986
55.7.....1968
55.0.....1957
54.8.....1996
54.2.....1977
54.1.....1954
54.1.....1992

MARCH

66.5.....2004
63.7.....1972
63.4.....1989
63.0.....1986
62.7.....1994
62.6.....1997
60.8.....1993
60.5.....1990
60.5.....1999
60.5.....2001

APRIL

72.7.....1989
71.2.....2000
70.6.....1981
70.5.....1992
70.3.....1962
69.7.....2002
69.6.....1954
69.1.....1946
68.8.....1990
68.7.....1959

10 COLDEST AND HOTTEST MONTHS BY MONTH (CONT)

MAY

66.2.....1953
 67.7.....1977
 68.0.....1971
 69.0.....1980
 69.3.....1957
 69.6.....1965
 69.9.....1991
 70.0.....1998
 70.2.....1938
 70.2.....1955

MAY

82.2.....2001
 81.6.....1997
 80.8.....2000
 80.7.....1984
 79.1.....2004
 78.8.....1947
 78.0.....1940
 78.0.....1958
 77.9.....2003
 77.8.....1976

JUNE

77.6.....1944
 78.0.....1965
 78.6.....1963
 78.8.....1941
 79.6.....1967
 80.0.....1998
 80.2.....1943
 80.3.....1952
 80.8.....1945
 80.9.....1995

JUNE

90.3.....1994
 89.1.....1974
 88.8.....1981
 88.7.....2000
 88.1.....2002
 88.1.....2004
 88.0.....1977
 87.9.....2001
 87.9.....2003
 87.8.....1986

JULY

86.9.....1976
 86.9.....1987
 87.0.....1938
 87.1.....1944
 87.2.....1941
 87.2.....1955
 87.6.....1986
 87.8.....1937
 88.1.....1982
 88.2.....1999

JULY

94.8.....2003
 94.5.....2002
 93.4.....1959
 93.4.....1989
 93.3.....1994
 93.2.....1996
 93.1.....1972
 93.0.....2004
 92.8.....1971
 92.7.....1981

AUGUST

83.0.....1941
 83.5.....1968
 83.8.....1983
 85.0.....1949
 85.4.....1984
 85.5.....1951
 85.5.....1976
 85.9.....1979
 86.0.....1938
 86.0.....1954

AUGUST

93.1.....1995
 92.9.....1994
 92.2.....1969
 92.0.....1998
 91.9.....1996
 91.9.....2001
 91.2.....1986
 90.8.....1952
 90.7.....1997
 90.6.....2002

10 COLDEST AND HOTTEST MONTHS BY MONTH (CONT)

SEPTEMBER

73.0.....1941
74.8.....1965
75.4.....1985
75.4.....1986
75.6.....1939
75.6.....1961
76.3.....1940
77.2.....1970
77.4.....1942
77.6.....1971

SEPTEMBER

85.3.....1979
85.1.....2001
84.4.....2003
83.7.....1992
83.7.....1995
83.4.....1956
83.4.....1974
83.3.....1947
83.1.....1994
82.8.....2002

OCTOBER

60.7.....1941
61.6.....1946
61.7.....1971
62.8.....1969
63.0.....1982
63.0.....1984
63.3.....1949
63.4.....1938
63.5.....1972
63.7.....1957

OCTOBER

75.4.....2003
74.9.....1988
73.5.....1978
72.2.....1991
72.1.....2001
72.0.....1964
71.9.....1952
71.8.....1950
71.6.....1999
71.4.....1977

NOVEMBER

46.0.....1938
49.0.....1957
49.4.....1994
49.5.....1952
49.6.....1948
49.7.....1972
50.0.....1964
50.1.....1940
50.2.....2000
50.3.....1961

NOVEMBER

58.9.....1995
58.9.....1949
58.8.....1999
58.1.....2001
58.0.....1976
58.0.....1981
57.3.....1962
57.3.....1989
57.2.....1954
57.2.....1977

DECEMBER

40.2.....1990
40.8.....1968
41.1.....1948
41.3.....1972
41.4.....1971
41.6.....1967
42.3.....1951
42.5.....1961
42.5.....1987
42.9.....1978

DECEMBER

52.7.....1980
51.9.....1977
51.2.....1950
49.5.....2000
49.2.....2004
48.9.....1995
48.8.....1958
48.8.....1981
48.7.....1999
48.6.....1946

DESERT HEAT STATISTICS

90 DEGREE DAYS
(AVG PER MONTH)
1971-2000

MOST EVER
1937-2004

LEAST EVER
1937-2004

| | | |
|--------------|-----------------|----------------|
| MAR.....0.0 | 3...2004 | |
| APR.....3.5 | 14...1946 | 0...MANY TIMES |
| MAY.....15.0 | 27...2001 | 3...1953 |
| JUN.....26.3 | 30...MANY TIMES | 19...1998/1963 |
| JUL.....30.3 | 31...MANY TIMES | 28...1984 |
| AUG.....29.8 | 31...MANY TIMES | 24...1983 |
| SEP.....22.2 | 30...1979/1947 | 11...1986 |
| OCT.....6.0 | 19...1991 | 0...MANY TIMES |

AVG 90 DEGREE DAYS PER YEAR.....133.1

NORMAL 90 DEGREE DAYS EXTEND FROM
.....MAY 22ND TO SEP 27TH.....

90 DEGREE DAYS IN A YEAR (1937-2004)

MOST

LEAST

| | |
|-------------------|--------------|
| 158.....1940/1937 | 102.....1998 |
| 157.....1958/1943 | 110.....1982 |
| | 111.....1983 |
| | 117.....1941 |

100 DEGREE DAYS
(AVG PER MONTH)
1971-2000

MOST EVER
1937-2004

LEAST EVER
1937-2004

| | | |
|--------------|-------------------------|-------------------------|
| MAY.....2.2 | 14...1947 | 0...MANY TIMES |
| JUN.....15.8 | 25...1974 | 1...1965 |
| JUL.....25.0 | 31...1988 (MOST RECENT) | 15...1999 |
| AUG.....21.8 | 31...1985 (MOST RECENT) | 14...1984 (MOST RECENT) |
| SEP.....7.5 | 22...1943 | 0...1972 (MOST RECENT) |
| OCT.....0.1 | 2...1980 | 0...MANY TIMES |

AVG 100 DEGREE DAYS PER YEAR.....72.4

NORMAL 100 DEGREE DAYS EXTEND FROM
.....JUN 17TH TO AUG 28TH.....

100 DEGREE DAYS IN A YEAR (1937-2004)

MOST

LEAST

| | |
|------------------|------------------|
| 100.....1947 | 44.....1965 |
| 95.....1948/1946 | 55.....1992/1941 |

DESERT HEAT STATISTICS (CONT)

**105 DEGREE DAYS
(AVG PER MONTH)
1971-2000**

**MOST EVER
1937-2004**

**LEAST EVER
1937-2004**

| | | |
|-------------|--------------------|-----------------------|
| MAY.....0.4 | MAY....4/1947 | MAY....0 (NMRS TIMES) |
| JUN.....7.6 | JUN...17/1985/1940 | JUN....0/1969/1965 |
| JUL....15.8 | JUL...28/1942 | JUL....5/1955 |
| AUG....10.5 | AUG...23/1969 | AUG....1/1968 |
| SEP.....1.9 | SEP...11/1948/1945 | SEP....0 (NMRS TIMES) |

**AVG 105 DEGREE DAYS PER YEAR....36.2
MAXIMUM.....61 IN 1940**

**110 DEGREE DAYS
(AVG PER MONTH)
1971-2000**

**MOST EVER
1937-2004**

**LEAST EVER
1937-2004**

| | | |
|-------------|--------------------|---------------|
| JUN.....1.8 | JUN...10/1961/1940 | SEVERAL YEARS |
| JUL.....5.1 | JUL...17/1942 | NEVER REACHED |
| AUG.....1.9 | AUG...10/1937 | |
| SEP.....0.* | SEP....3/1947 | |

**AVG 110 DEGREE DAYS YEAR.....8.8 * OCCURRED ONCE IN 30 YEARS
MAXIMUM.....29 IN 1940**

**115 DEGREE DAYS
(AVG PER MONTH)
1971-2000**

**MOST EVER
1937-2004**

**AVG HOTTEST HIGH FOR THE SUMMER
(JUN-SEP) (1937-2004)**

| | | |
|-------------|--------------------|---------------|
| JUN.....0.1 | JUN....3/1994/1940 |113..... |
| JUL.....0.4 | JUL....3/1942 | |
| AUG.....0.1 | AUG....3/1979 | |

**AVG 115 DEGREE DAYS PER YEAR.....0.6
MAXIMUM.....5 IN 1940**

**AVG HOTTEST HIGH (BY MONTH)
(1937-2004)**

**HIGHEST AVERAGE
DAILY TEMPERATURE
(1937-2004)**

| | | |
|------------|------------|-------------------|
| JAN.....68 | JUL....113 | 102....7/11/2003 |
| FEB.....75 | AUG....110 | 102....7/13/2003 |
| MAR.....83 | SEP....105 | 102....6/30/1994 |
| APR.....92 | OCT....94 | 102....7/08/1989 |
| MAY....101 | NOV....79 | 101....7/22/2003* |
| JUN....110 | DEC....68 | |

*occurred other years

DESERT HEAT STATISTICS (CONT)

CONSECUTIVE DAYS 90 DEGREES OR HOTTER

118.....5/07-9/01/1940
114.....5/29-9/19/1956
109.....5/26-9/11/1994

CONSECUTIVE DAYS 100 DEGREES OR HOTTER

66.....6/27-8/31/1944
46.....6/20-8/04/1988
45.....7/01-8/14/1971

CONSECUTIVE DAYS 105 DEGREES OR HOTTER

21.....7/18-8/07/2000
21.....7/25-8/14/1977
21.....6/22-7/12/1973

CONSECUTIVE DAYS 110 DEGREES OR HOTTER

10.....6/17-6/26/1961
9.....7/15-7/23/1978
9.....7/09-7/17/1961

CONSECUTIVE DAYS 115 DEGREES OR HOTTER

3.....6/28-6/30/1994
3.....6/30-7/02/1950
3.....7/22-7/24/1942

EARLIEST DAY WITH READING

80 OR HIGHER.....2/01/2003
90 OR HIGHER.....3/20/2004
100 OR HIGHER.....5/01/1947
110 OR HIGHER.....6/08/1955
115 OR HIGHER.....6/14/1940

LATEST DATE OF LAST...

80 OR HIGHER.....11/24/1949
90 OR HIGHER.....10/29/1950/1937
100 OR HIGHER.....10/04/1947
110 OR HIGHER.....(SEVERAL YEARS
115 OR HIGHER.....NEVER OCCURRED)

LATEST DATE OF FIRST

80 OR HIGHER.....4/23/1941
90 OR HIGHER.....5/21/1993
100 OR HIGHER.....6/30/1965
110 OR HIGHER.....(SEVERAL YEARS
115 OR HIGHER.....NEVER REACHED)

EARLIEST IN SEASON TO END WITH

80 OR HIGHER.....10/10/1957
90 OR HIGHER.....9/13/1986
100 OR HIGHER.....8/28/1961
110 OR HIGHER.....(SEVERAL YEARS
115 OR HIGHER.....NEVER REACHED)

AVERAGE DATE OF FIRST

80.....MARCH 17
90.....APRIL 20
100.....MAY 25
105.....JUNE 9
110.....JULY 1
115.....JULY 11

FROST/FREEZE DATA

CONSECUTIVE DAYS WITH LOWS 32 OR LESS

32.....1/03-2/03/1947
 25.....12/28/1948-1/21/1949
 22.....12/07-28/1937
 22.....1/07-28/1947

HIGHS LESS THAN OR EQUAL TO 32

JAN.....5/1937
 FEB-NOV...NEVER OCCURED
 DEC.....1/1972

**AVERAGE LOWS LESS THAN OR EQUAL TO
 32...BY MONTH (1971-2000)**

JAN.....9.1
 FEB.....3.2
 MAR.....0.6
 APR.....0.* (ONCE IN 30 YEARS)
 MAY-SEP..NEVER OCCURED
 OCT.....0.1
 NOV.....2.0
 DEC.....9.0

**MOST LOWS AT OR BELOW FREEZING
 (1937-2004)**

JAN.....30 IN 1949/1947
 FEB.....23 IN 1939
 MAR.....12 IN 1948
 APR.....2 IN 1945
 MAY-SEP...NEVER OCCURED
 OCT.....3 IN 1971
 NOV.....21 IN 1938
 DEC.....25 IN 1948

AVERAGE...24.0

**EARLIEST DATE WITH READING OF
 (1937-2004)**

32 OR LESS....10/21/1949
 28 OR LESS....10/30/1971
 24 OR LESS....11/07/1938

**LATEST DATE IN SPRING WITH
 (1937-2004)**

32 OR LESS....4/12/1967
 28 OR LESS....3/31/1938
 24 OR LESS....3/06/1939

AVG DATE OF FIRST FREEZE (1971-2000)
11/21.....

AVG DATE OF LAST FREEZE (1971-2000)
3/7.....

SHORTEST FREEZE FREE PERIOD....202 DAYS (4/6/45-10/24/45)
AVERAGE FREEZE FREE PERIOD.....269 DAYS
LONGEST FREEZE FREE PERIOD.....367 DAYS (12/17/94-12/18/95)

**LATEST DATE IN FALL/WINTER
 OF FIRST READING**
 32 OR LESS....12/19/1995 and 2002
 28 OR LESS....NONE NUMEROUS YEARS
 24 OR LESS....NONE NUMEROUS YEARS

**EARLIEST IN WINTER/SPRING
 SEASON FOR LAST READING**
 32 OR LESS....12/16/94
 28 OR LESS....NONE NUMEROUS YEARS
 24 OR LESS....NONE NUMEROUS YEARS

**AVG COLDEST LOW (BY MONTH)
 (1971-2000)**

JAN.....25
 FEB.....29
 MAR.....35
 APR.....41
 MAY.....49
 JUN.....58
 JUL.....67
 AUG.....67
 SEP.....57
 OCT.....43
 NOV.....31
 DEC.....25

**AVG COLDEST LOW FOR THE WINTER
 (NOV-FEB) (1971-2000)**

.....22.....

THUNDERSTORM DAYS

AVERAGE PER MONTH (1971-2000)

JAN.....0.0
FEB.....0.2
MAR.....0.4
APR.....0.5
MAY.....1.0
JUN.....1.0
JUL.....3.8
AUG.....3.7
SEP.....1.5
OCT.....0.5
NOV.....0.2
DEC.....0.0*

MOST EVER BY MONTH (1949-2004)

JAN.....0
FEB.....2...2000
MAR.....4...1992
APR.....3...1952
MAY.....4...1992/1965
JUN.....6...1972
JUL.....9...1952
AUG....12...1955
SEP.....6...1967
OCT.....4...1974
NOV.....2...1959
DEC.....1...2003/1966

* OCCURRED TWICE IN 50 YEARS

ANNUAL AVG.....12.8

MOST THUNDERSTORM DAYS IN A MONSOON SEASON JUNE-SEPTEMBER (1949-2004)

22.....1955
20.....1984/1967/1961
19.....1998
17.....1972

HAIL DAYS

AVG PER MONTH (1971-2000)

JAN.....0.0
FEB.....0.0
MAR.....0.1
APR.....0.0
MAY.....0.1
JUN.....0.0
JUL.....0.0
AUG.....0.1
SEP.....0.1
OCT.....0.0
NOV.....0.0
DEC.....0.0

MOST EVER BY MONTH (1951-2004)

JAN.....0
FEB.....1...1970
MAR.....2...1992
APR.....0
MAY.....1...1979/1975/1973
JUN.....1...1970/1969/1967/1955
JUL.....1...1960
AUG.....1...2004/1989
SEP.....1...1983/1972
OCT.....0
NOV.....0
DEC.....0

ANNUAL AVG.....0.4

MOST HAIL DAYS IN MONSOON SEASON JUNE-SEPTEMBER (1951-2004)

1.....SEVERAL OCCASIONS

WIND NORMALS...MEANS AND EXTREMES*

MEAN

| | | |
|----------|-----|------|
| JAN..... | WSW | 7.3 |
| FEB..... | WSW | 8.5 |
| MAR..... | SW | 10.1 |
| APR..... | SW | 11.0 |
| MAY..... | SW | 11.2 |
| JUN..... | S | 11.2 |
| JUL..... | S | 10.2 |
| AUG..... | S | 9.7 |
| SEP..... | SW | 8.9 |
| OCT..... | SW | 8.0 |
| NOV..... | SW | 7.6 |
| DEC..... | WSW | 7.0 |
| ANN..... | SW | 9.2 |

**ALL TIME WINDIEST MONTHS
(1949-2004)**

| | | |
|---------|---------|------|
| JAN.... | 11.2... | 1982 |
| FEB.... | 11.3... | 1986 |
| MAR.... | 13.8... | 1984 |
| APR.... | 14.4... | 1957 |
| MAY.... | 13.7... | 1955 |
| JUN.... | 14.5... | 1958 |
| JUL.... | 13.3... | 1963 |
| AUG.... | 13.6... | 1954 |
| SEP.... | 12.3... | 1986 |
| OCT.... | 10.5... | 1975 |
| NOV.... | 10.8... | 1983 |
| DEC.... | 10.1... | 1988 |

PEAK GUSTS BY MONTH IN MPH

| | | | |
|----------|-----|---------|------------|
| JAN..... | WSW | 58..... | 1/24/1965 |
| FEB..... | NW | 73..... | 2/19/1976 |
| MAR..... | NW | 82..... | 3/21/1984 |
| APR..... | W | 69..... | 4/30/1988 |
| MAY..... | NW | 73..... | 5/30/1991 |
| JUN..... | NNW | 67..... | 6/07/1964 |
| JUL..... | S | 75..... | 7/14/1991 |
| AUG..... | SE | 90..... | 8/08/1989 |
| SEP..... | SE | 73..... | 9/04/1973 |
| OCT..... | SW | 71..... | 10/23/1956 |
| NOV..... | S | 70..... | 11/20/1983 |
| DEC..... | W | 68..... | 12/05/1951 |

* PREVAILING WIND DIRECTION TO NEAREST CARDINAL COMPASS POINT.
WIND NORMAL...MEANS AND EXTREMES ARE IN MILES PER HOUR.

10 WINDIEST MONTHS BY MONTH (MPH)

JAN

11.2.....1982
 9.5.....1980
 9.3.....1957
 9.2.....1989
 8.9.....1975/1973/1962
 8.8.....1987
 8.3.....1997/1990/1965

FEB

11.3.....1986
 11.0.....1955
 10.9.....1956
 10.7.....1989
 10.3.....1990/1960
 10.2.....1984/1962
 9.9.....1977/1964

MAR

13.8.....1984
 13.5.....1977
 13.1.....1985
 13.0.....1989/1975
 12.3.....1954
 12.0.....1982
 11.9.....1957
 11.5.....1983
 11.3.....1986/1976

APR

14.4.....1957
 13.9.....1963
 13.8.....1955
 13.4.....1983
 13.3.....1986
 12.8.....1972
 12.7.....1984/1973
 12.6.....1964
 12.3.....1956

MAY

13.7.....1955
 13.6.....1956
 13.4.....1990/1989
 13.1.....1985
 12.9.....1998
 12.7.....1962
 12.6.....1957
 12.5.....1963/1961/1959

JUN

14.5.....1958
 13.6.....1980
 13.4.....1963
 13.3.....1978/1954
 12.8.....1989
 12.7.....1990/1976
 12.6.....1956
 12.4.....1997/1981

JUL

13.3.....1963
 12.8.....1983/1958
 12.6.....1981
 12.5.....1955
 12.3.....1972
 12.2.....1989
 12.1.....1957
 11.8.....1988
 11.7.....1977

AUG

13.6.....1954
 12.1.....1957
 12.0.....1962
 11.8.....1976
 11.7.....1989/1956
 11.4.....1985
 11.3.....1995/1960
 10.7.....1963
 10.5.....1990 MOST RECENTLY

10 WINDIEST MONTHS BY MONTH (CONT)

SEP

12.3.....1986
12.0.....1954
11.1.....1989
11.0.....1985/1955
10.7.....1977
10.3.....1956
10.2.....1964
10.0.....1963
9.8.....1981

OCT

10.5.....1975
10.4.....1956
10.2.....1981/1973
10.0.....1984/1961
9.9.....1989
9.7.....1962
9.3.....1979
9.1.....1985

NOV

10.8.....1983
10.4.....1973
10.1.....1994/1988
10.0.....1985
9.9.....1975
9.3.....1964
9.0.....1982/1981/1980/1961

DEC

10.1.....1988
9.5.....1982
9.1.....1972
8.8.....1987
8.6.....1975/1967/1959
8.5.....1997/1971
8.4.....1998

HEATING/COOLING DEGREE DAYS

NORMALS (1971-2000) HDD/CDD

JAN.....574/0
 FEB.....375/0
 MAR.....244/20
 APR.....83/98
 MAY.....16/323
 JUN.....0/602
 JUL.....0/796
 AUG.....0/739
 SEP.....0/474
 OCT.....57/157
 NOV.....318/4
 DEC.....571/0

ANNUAL HDD...2238
CDD...3213

MOST/LEAST CDD (1937-2004)

JAN.....NEVER OCCURRED
 FEB.....20...1986
 0...NUMEROUS YEARS
 MAR.....124...2004
 0...SEVERAL YEARS
 APR.....259...1989
 2...1975
 MAY.....541...2001
 108...1953
 JUN.....768...1994
 387...1944
 JUL.....930...2003
 685...1987
 AUG.....880...1995
 566...1941
 SEP.....614...1979
 252...1941
 OCT.....335...2003
 16...1946
 NOV.....31...1988
 0...NUMEROUS YEARS
 DEC.....NEVER OCCURRED

MOST/LEAST HDD EVER (1937-2004)

JAN.....1040...1937
 331...2003
 FEB.....658...1939
 170...1995
 MAR.....447...1952
 71...2004
 APR.....261...1967
 7...1992
 MAY.....72...1964
 0...MANY TIMES
 JUN.....8...1993
 0...MANY TIMES
 JUL.....NEVER OCCURED
 AUG.....NEVER OCCURED
 SEP.....15...1965
 0...MANY TIMES
 OCT.....207...1971
 0...2001/1988/1944
 NOV.....563...1938
 151...1995
 DEC.....761...1990
 374...1980

SNOW (1937-1996)***

NORMALS (1971-1996)

JAN.....0.9
FEB.....0.1
MAR.....0.*
APR-SEP.....NEVER OCCURRED
OCT.....0.0
NOV.....0.0
DEC.....0.*
* LESS THAN 0.1
ANNUAL AVERAGE.....1.0

MOST EVER BY MONTH (1937-1996)

16.7.....JAN/1949
4.1.....FEB/1939
0.1.....MAR/1976

TRACE...OCT/1956
4.0.....NOV/1964
2.0.....DEC/1967

6 SNOWIEST MONTHS

16.7.....1/1949
13.4.....1/1974
9.9.....1/1979
4.1.....2/1939
4.0.....11/1964
2.0.....12/1967

MOST SNOW IN 24 HOURS

9.0.....1/4-5/1974
7.5.....1/30-31/1979
5.0.....1/11-12/1949
4.4.....1/1/1974
4.1.....2/3-4/1939
4.0.....11/15-16/1964

GREATEST SNOW DEPTHS (INCHES)

8.....1/5/1974
7.....1/12/1949
6.....1/31/1979

MOST SNOW IN A SEASON

16.7....1948/49
13.4....1973/74
10.2....1978/79
4.1....1938/39
4.0....1964/65

BIGGEST SNOW STORMS

9.7.....1/10-12/1949
9.0.....1/4-5/1974
7.8.....1/30-2/2/1979
4.7.....1/25/1949
4.4.....1/1/1974
4.1.....2/3-4/1939
4.0.....11/15-16/1964
2.4.....1/28/1979
2.3.....1/19-20/1949
2.0.....12/15/1967
1.5.....1/12/1937 AND 1/7/1955
1.4.....2/19/1990
1.0.....1/20/1945...1/29/1957

CONSECUTIVE SNOW DAYS (TRACE OR MORE)

5.....1/9-13/1949
5.....1/4-8/1974

CONSECUTIVE SNOW DAYS (MEASURABLE)

3.....1/11-13/1949
3.....1/30-2/1/1979

EARLIEST SNOW EVER (Trace or Measurable)

11/15/1964.....3.0" (1" more on the 16th)

LATEST SNOW EVER

Trace.....4/4/58
Measurable.....3/3/76.....0.1"

***Starting in 1996...snowfall and snow depth measurements were no longer officially recorded at McCarran International Airport.

NWS Forecast Office-LAS VEGAS SNOWFALL (1997-2004)

1.3...12/30/2003
1.0...12/06/1998

NORMAL SUNSHINE
(1971-1994)

(PERCENT OF POSSIBLE)

JAN.....77
FEB.....81
MAR.....83
APR.....87
MAY.....88
JUN.....93
JUL.....88
AUG.....88
SEP.....91
OCT.....87
NOV.....81
DEC.....78

ANNUAL AVG.....85

SUNSHINE (CONT)

SUNNIEST MONTHS ALL TIME (PERCENT OF POSSIBLE, 1951-1994)

JAN

95.....1984/1976
92.....1972
91.....1971

MAR

97.....1972
96.....1988/1953
95.....1956/1990

MAY

98.....1984
95.....1976/1970/1952

JUL

99.....1993
96.....1995/1983/1963
95.....1972/1971/1958

SEP

100.....1970
99.....1955
98.....1993

NOV

98.....1956
96.....1988
95.....1976

FEB

94.....1984
93.....1964/1954
92.....1974/1972/1956

APR

97.....1974
96.....1981/1969
94.....1989/1966

JUN

98.....1974 MOST RECENTLY

AUG

98.....1976/1985
97.....1980/1956/1952
95.....1978/1966

OCT

96.....1976/1967
95.....1980/1973
93.....1991/1989/1964/1954

DEC

96.....1976
94.....1963
94.....1988

ALL TIME SUNNIEST YEARS (IN PERCENTAGE OF POSSIBLE)

93.....1976
92.....1989
91.....1956

CLOUDIEST MONTHS AND YEARS

(IN PERCENTAGE OF POSSIBLE SUNSHINE, 1951-1994)

| | |
|------------------|-------------|
| JAN | FEB |
| 53.....1979 | 61.....1983 |
| 54.....1978 | 62.....1973 |
| MAR | APR |
| 64.....1958 | 73.....1965 |
| 70.....1973/1975 | 76.....1952 |
| 73.....1952 | 76.....1957 |
| MAY | JUN |
| 72.....1977 | 80.....1977 |
| 77.....1994/1957 | 84.....1965 |
| 77.....1951 | 86.....1972 |
| JUL | AUG |
| 75.....1984 | 74.....1955 |
| 76.....1954 | 76.....1982 |
| 78.....1970 | 78.....1971 |
| SEP | OCT |
| 75.....1963 | 55.....1972 |
| 78.....1967 | 70.....1987 |
| 79.....1989 | 71.....1951 |
| NOV | DEC |
| 69.....1982 | 61.....1983 |
| 70.....1972 | 63.....1971 |
| 71.....1964 | 64.....1977 |

ALL TIME CLOUDIEST YEARS (IN PERCENTAGE OF POSSIBLE SUNSHINE) (1951-1994)

78.....1957
80.....1986
81.....1965

RELATIVE HUMIDITY

AVERAGE RELATIVE HUMIDITY (IN PERCENTAGE)

| | JAN | FEB | MAR | APR | MAY | JUN | JUL | AUG | SEP | OCT | NOV | DEC | YEAR |
|------------|-----|-----|-----|-----|-----|-----|-----|-----|-----|-----|-----|-----|------|
| LOCAL TIME | | | | | | | | | | | | | |
| HOUR 04 | 57 | 52 | 47 | 35 | 33 | 24 | 28 | 33 | 34 | 38 | 45 | 52 | 40 |
| HOUR 10 | 43 | 38 | 32 | 23 | 20 | 15 | 20 | 23 | 23 | 26 | 32 | 38 | 28 |
| HOUR 16 | 33 | 28 | 24 | 17 | 15 | 11 | 15 | 18 | 18 | 20 | 26 | 31 | 21 |
| HOUR 22 | 51 | 45 | 39 | 27 | 24 | 17 | 21 | 25 | 26 | 30 | 39 | 46 | 32 |

FOG

NORMALS (VISIBILITIES 1/4 MILES OR LESS)
(1971-2000)

JAN.....0.3
FEB.....0.1
MAR.....0.1
APR.....0.0
MAY.....0.0
JUN.....0.0
JUL.....0.0
AUG.....0.0
SEP.....0.*
OCT.....0.0
NOV.....0.1
DEC.....0.1

ANNUAL AVG...0.7

* OCCURRED ONCE IN 30 YEARS

NORMAL FOG DAYS (<= 5/8 MILE)
(1971-2000)

JAN.....1.2
FEB.....0.8
MAR.....0.4
APR.....0.1
MAY.....0.*
JUN.....0.0
JUL.....0.*
AUG.....0.1
SEP.....0.*
OCT.....0.1
NOV.....0.3
DEC.....0.7

ANNUAL AVG.....3.7

*OCCURRED ONCE IN 30 YEARS

FOGGIEST MONTHS (<= 5/8 MILE)
(1971-2004)

JAN.....5 IN 1980
FEB.....5 IN 1980
MAR.....3 IN 1992/1981
APR.....2 IN 1988
MAY.....1 IN 1987/1977
JUN.....0
JUL.....1 IN 1984
AUG.....1 IN 1983/1979
SEP.....1 IN 1983
OCT.....1 IN 1992/1987/1978
NOV.....3 IN 1987
DEC.....5 IN 1984

PRESSURE

ALL TIME HIGHEST (BY MONTH) (1937-2004)

JAN.....30.76...1979
FEB.....30.77...2002
MAR.....30.61...1971
APR.....30.39...1971/1963
MAY.....30.55...1966
JUN.....30.24...1981
JUL.....30.18...1988
AUG.....30.18...1981
SEP.....30.29...1970
OCT.....30.55...1981
NOV.....30.72...1969
DEC.....30.80...1967

ALL TIME LOWEST (BY MONTH) (1937-2004)

JAN.....29.37...1944
FEB.....29.31...1987
MAR.....29.25...1984
APR.....29.24...1954
MAY.....29.28...1975
JUN.....29.18...1947
JUL.....29.40...1999
AUG.....29.44...1984
SEP.....29.31...2000
OCT.....29.35...1994
NOV.....29.18...1982
DEC.....29.17...1949

ALL TIME HIGHEST.....30.80...12/1967
ALL TIME LOWEST.....29.17...12/1949

**HOLIDAY WEATHER
(1937-2004)**

NEW YEAR HOLIDAY (JANUARY 1ST)

AVERAGE HIGH/LOW.....56/35
RECORD HIGH.....69 IN 1981
RECORD LOW.....21 IN 1954
MOST SNOW EVER.....4.4 INCHES IN 1974
MOST PRECIPITATION...0.43 IN 1974
DAYS OF MEASURABLE PRECIPITATION.....1
DAYS WITH ANY PRECIPITATION.....3

MEMORIAL DAY WEEKEND

AVERAGE HIGH/LOW.....93/67

4TH OF JULY

AVERAGE HIGH/LOW.....103/77
RECORD HIGH.....115 IN 1985
RECORD LOW.....60 IN 1941
MOST PRECIPITATION EVER.....0.16 IN 1949
DAYS OF MEASURABLE PRECIPITATION.....2
DAYS WITH ANY RAIN.....3

LABOR DAY WEEKEND

AVERAGE HIGH/LOW.....99/70

HALLOWEEN

AVERAGE HIGH.....73/50
RECORD HIGH.....86 IN 1988
RECORD LOW.....30 IN 1971
MOST PRECIPITATION EVER.....0.25 IN 1987
DAYS OF MEASURABLE PRECIPITATION.....6
DAYS WITH ANY RAIN.....7

THANKSGIVING

AVERAGE HIGH/LOW.....64/40

HOLIDAY WEATHER (CONT)

CHRISTMAS

AVERAGE HIGH/LOW.....56/36

RECORD HIGH.....69 IN 1964

RECORD LOW.....17 IN 1948

MOST PRECIPITATION EVER.....0.66 IN 1994

MOST SNOW EVER.....TRACE IN 1941 AND 1988

DAYS WITH MEASURABLE PRECIPITATION.....7

DAYS WITH ANY RAIN OR SNOW.....11

CONSECUTIVE DAYS TEMPERATURES ABOVE/BELOW NORMAL

RECORD DAYS BELOW NORMAL

46 days (12/27/1948 - 2/10/1949)
42 days (7/07/1999 - 8/17/1999)

RECORD DAYS ABOVE NORMAL

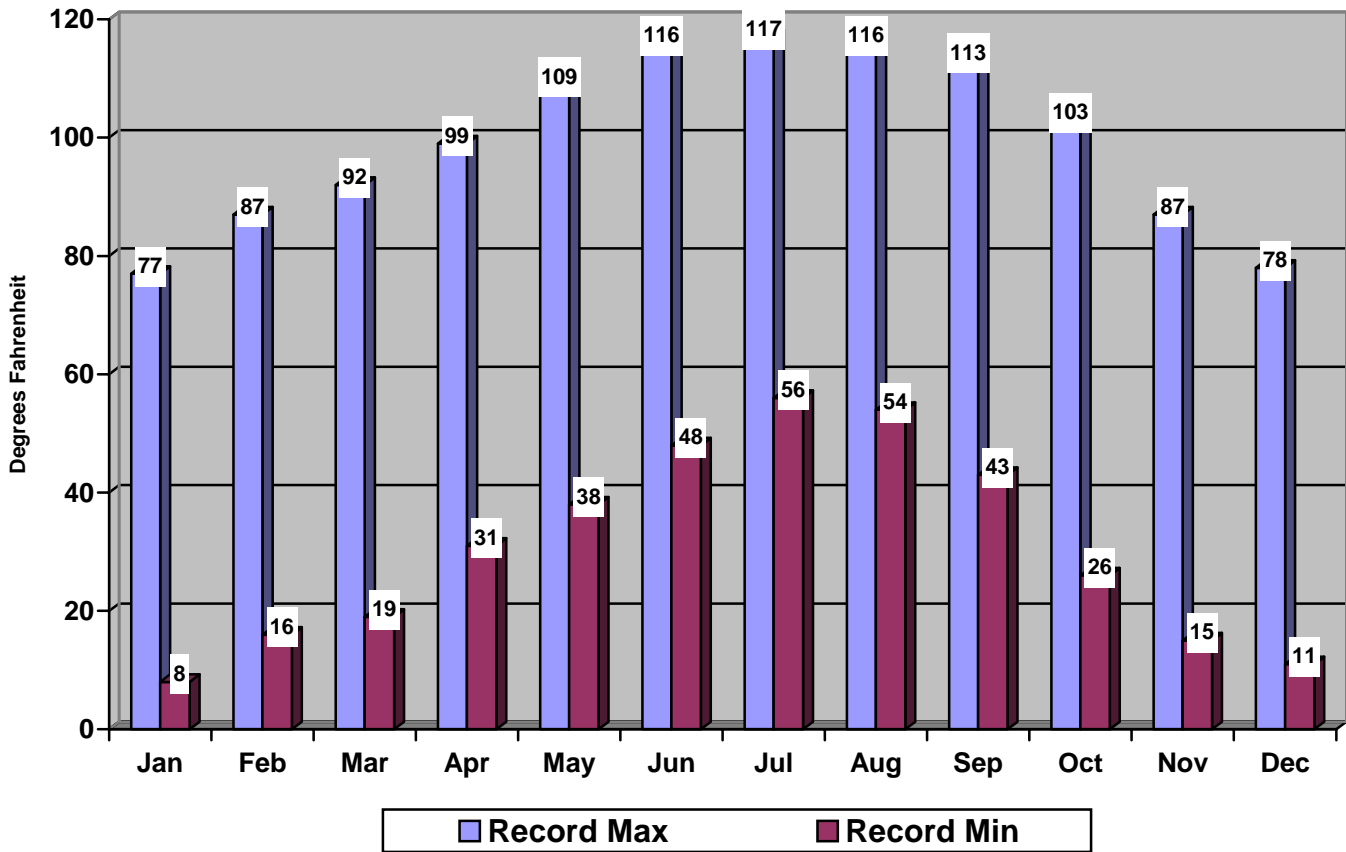
45 days (12/15/1985 - 1/29/1985)

ACKNOWLEDGMENTS

I would like to thank the staff at NWSO Las Vegas for their encouragement and help during this project. I would like to also thank MIC Kim Runk and Stanley Czyzyk, SOO, for their review, comments, and guidance on completing this Technical Memorandum.

We would like to thank all the observers down through WSO Las Vegas' existence. It is fascinating looking back at our historical database to see how detailed the records were 60 or more years ago.

Record Max/Min Temperature



Las Vegas, NV

Figure 1. Record Maximum/Minimum Temperature in Las Vegas.
(1937-1948 at Nellis) (1949-2004 at McCarran).

ANNUAL PRECIPITATION AT LAS VEGAS

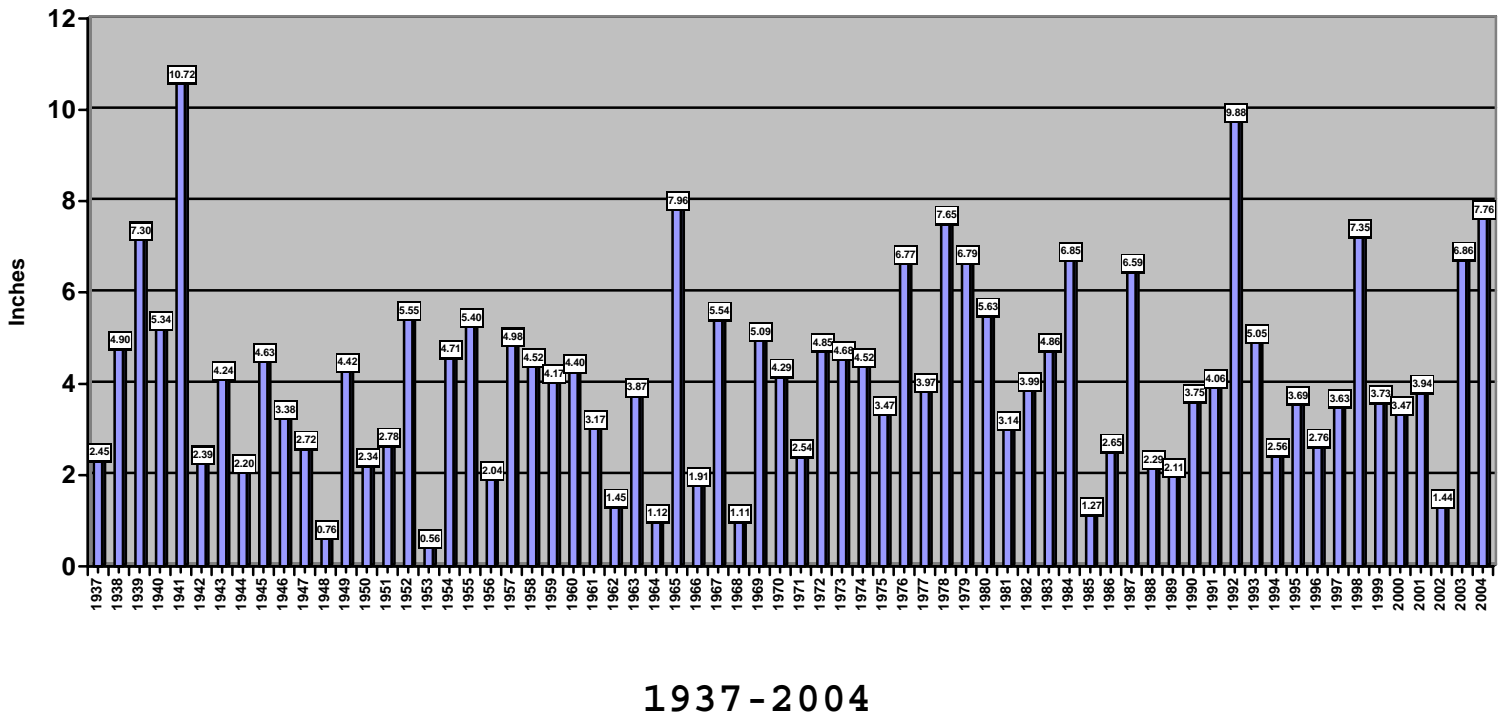


Figure 2. Annual Precipitation (in inches) at Las Vegas, NV (1937-1948 at Nellis) (1949-2004 at McCarran).

Average RH

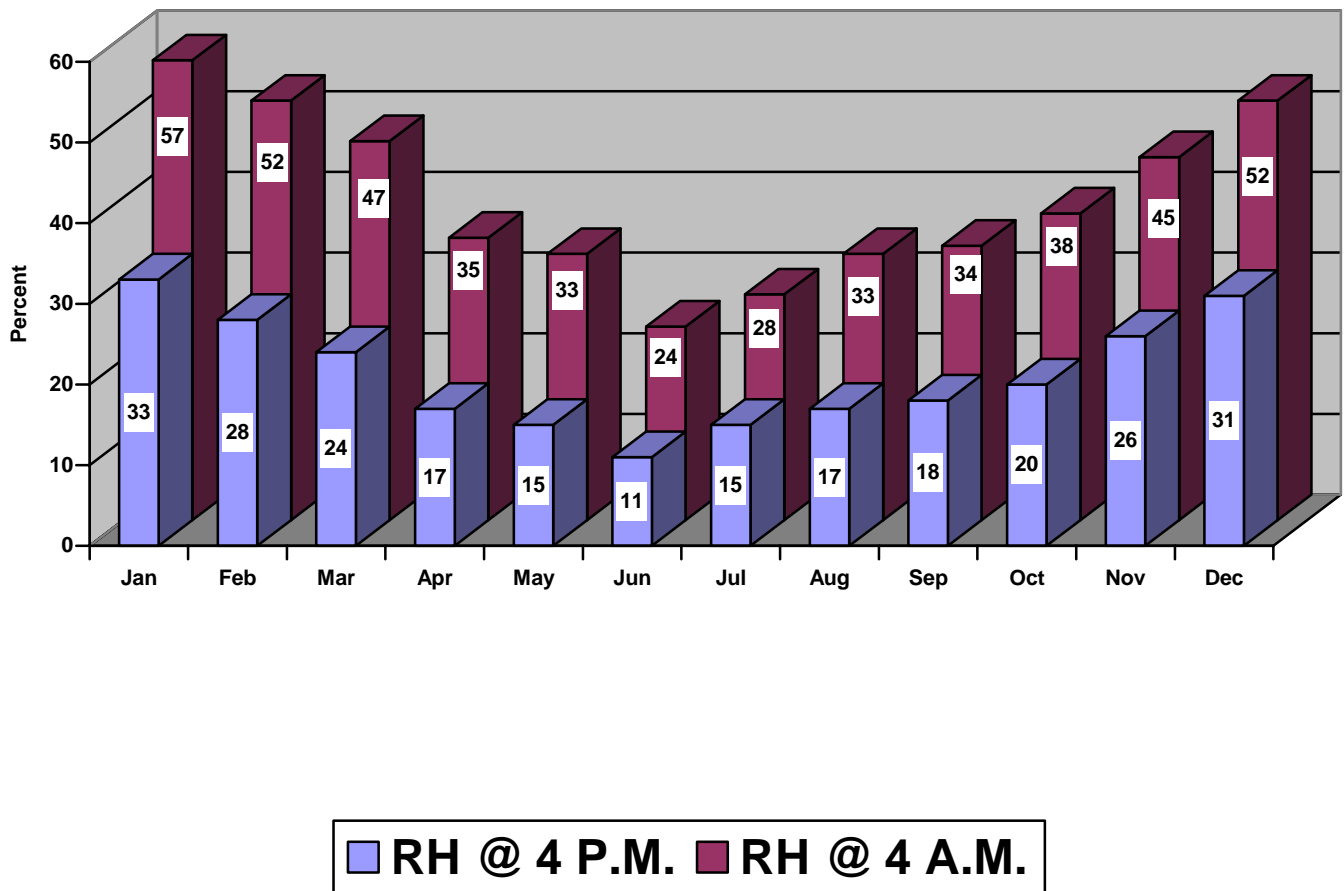
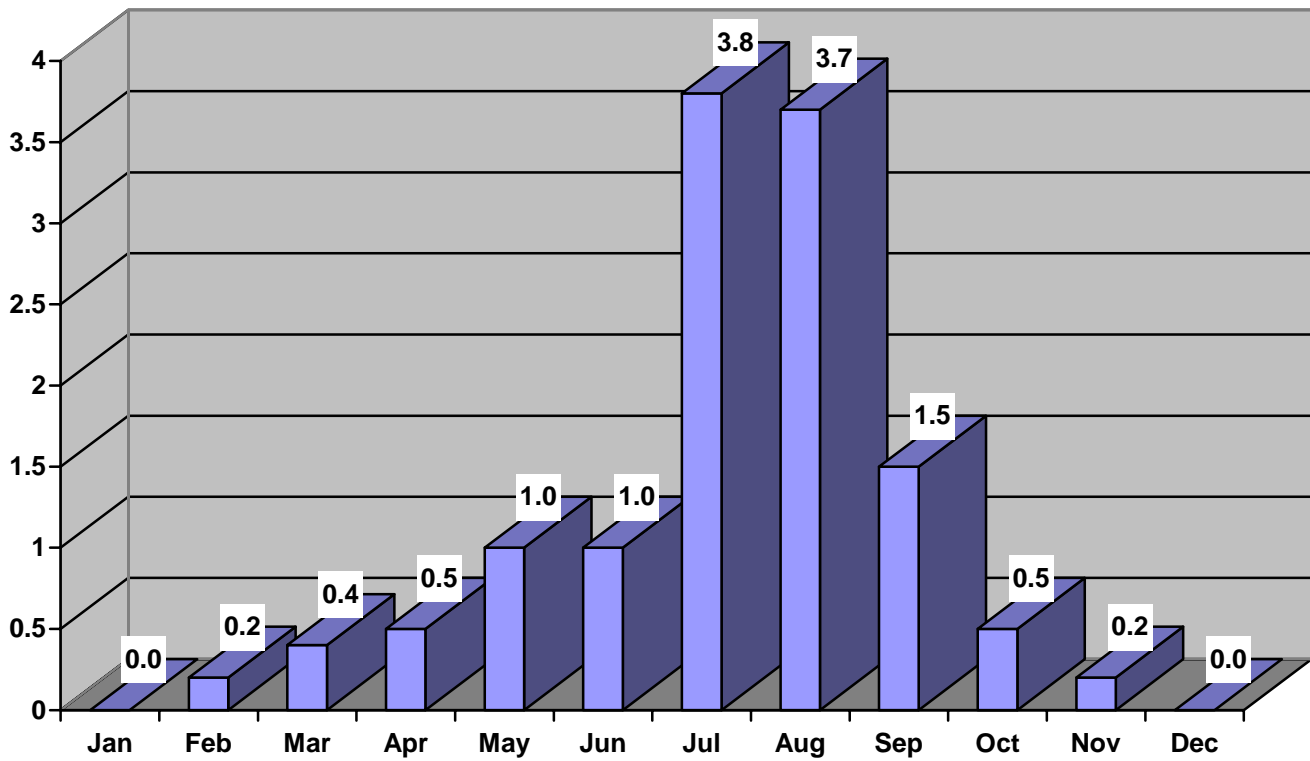


Figure 3. Average Relative Humidity at 4:00 a.m. and 4:00 p.m. PST for McCarran International Airport, Las Vegas, NV (1971-2000).

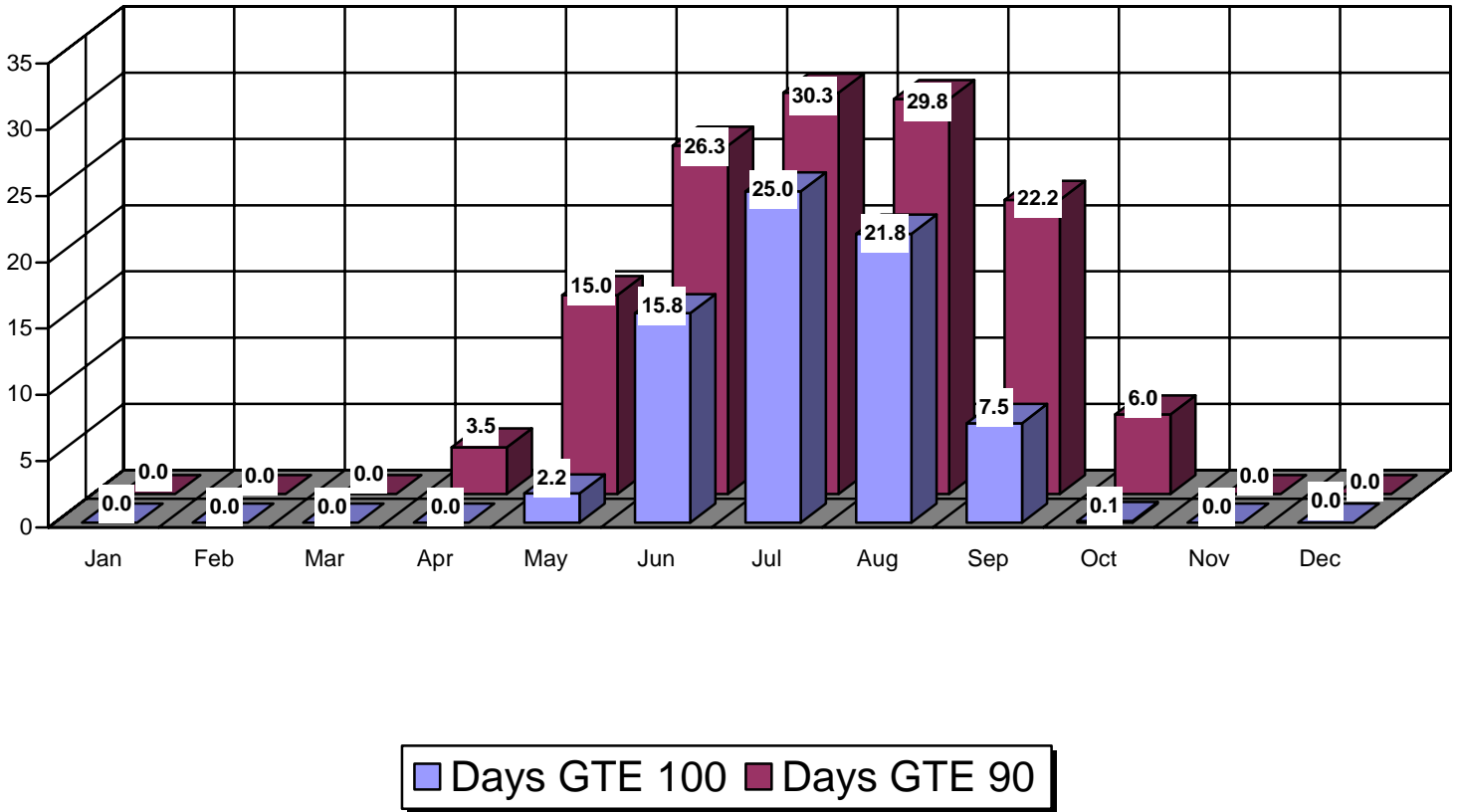
Avg. # of Thunderstorm Days



Las Vegas, NV

Figure 4. Average Number of Thunderstorm Days for McCarran International Airport, Las Vegas, NV. (1971-2000).

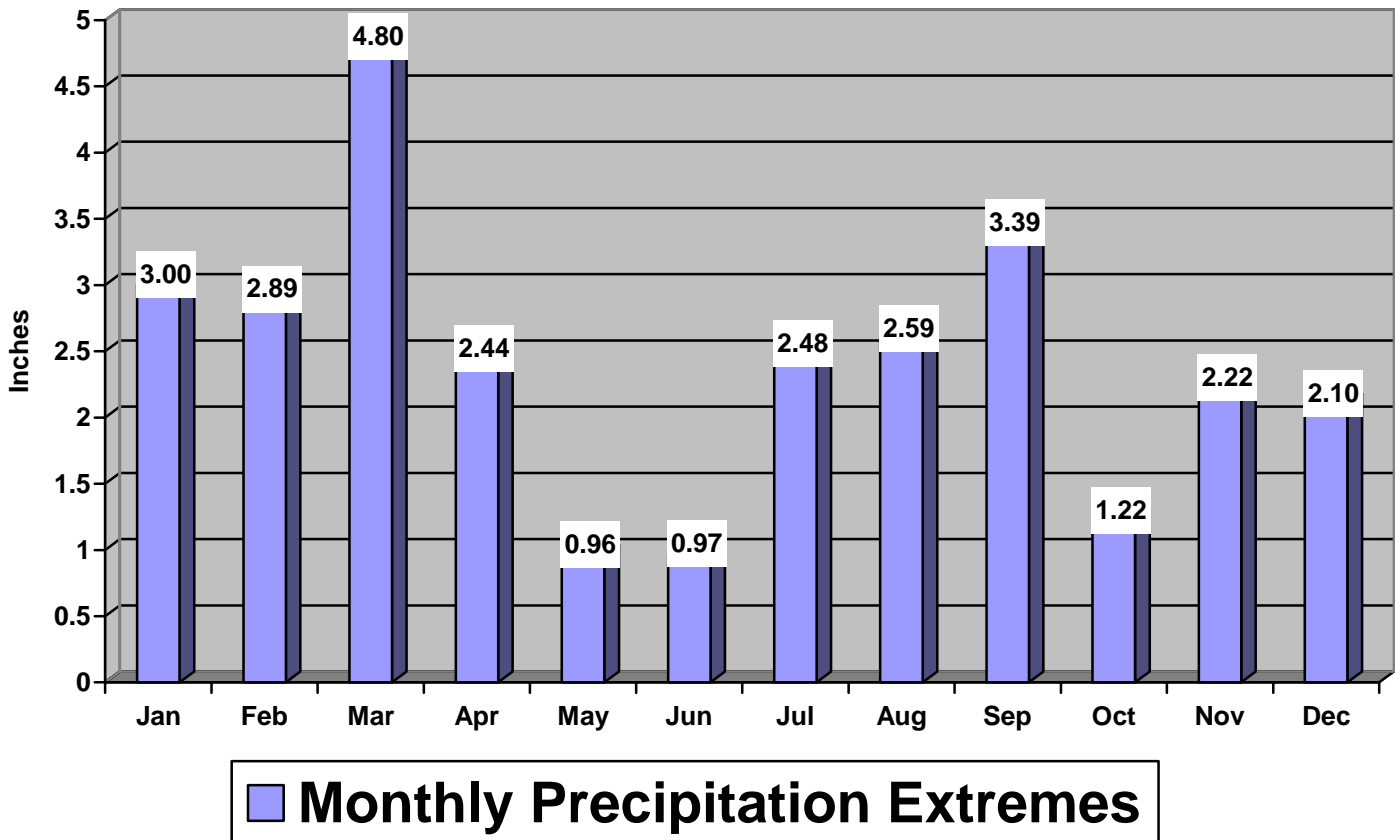
Avg 90/100 Degree Days



Las Vegas, NV

Figure 5. Average number of 90 and 100 degree days at McCarran International Airport, Las Vegas, NV (1971-2000).

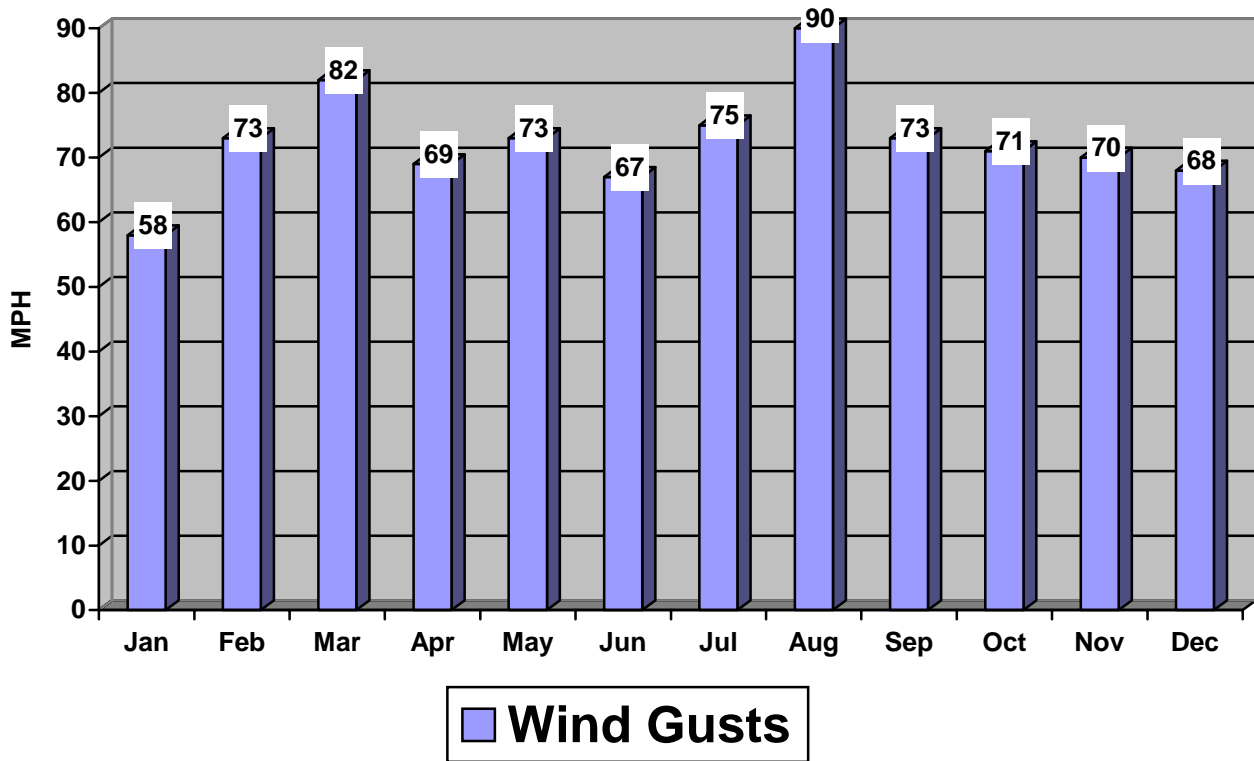
Monthly Precipitation Extremes



Las Vegas, NV

Figure 6. Monthly Precipitation Extremes for Las Vegas. (1937-1948 at Nellis) (1949-2004 at McCarran).

Record Monthly Peak Wind Gust



Las Vegas, NV

Figure 7. Peak Wind Gusts per Month recorded at McCarran International Airport, Las Vegas, NV.

Average Las Vegas Temperature by Decade

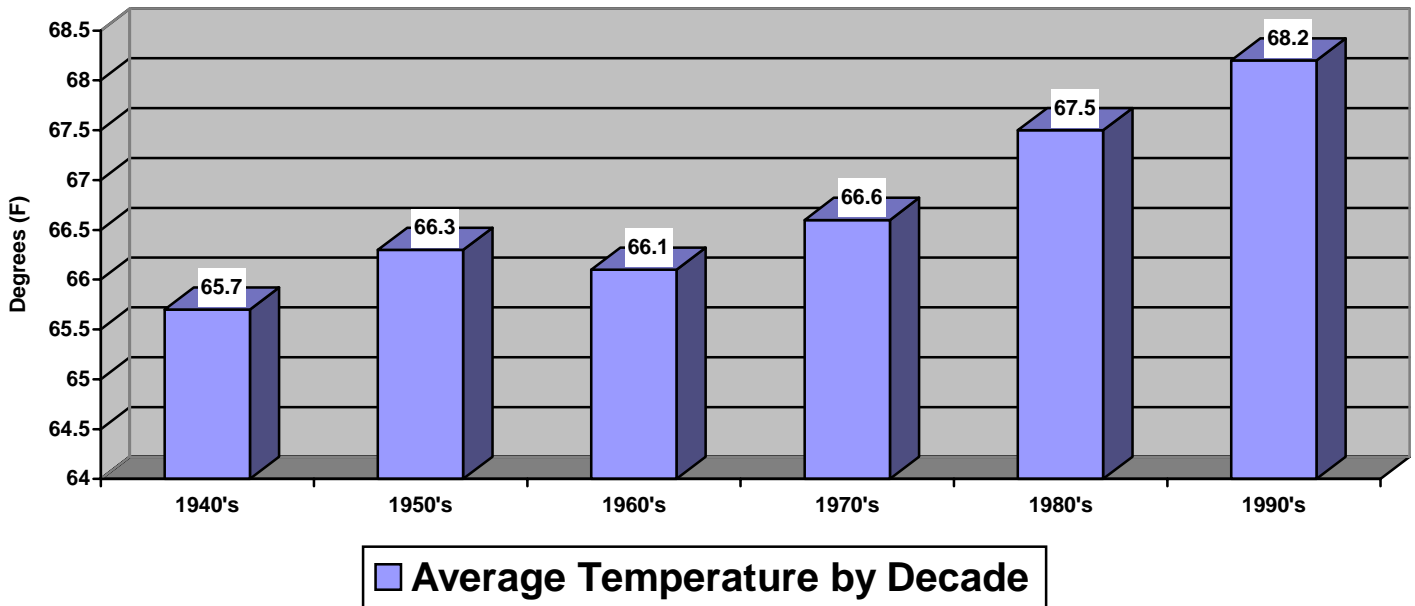


Figure 8. Average yearly Las Vegas temperature by decade recorded at McCarran International Airport, Las Vegas, NV.

Clark County Nevada Population

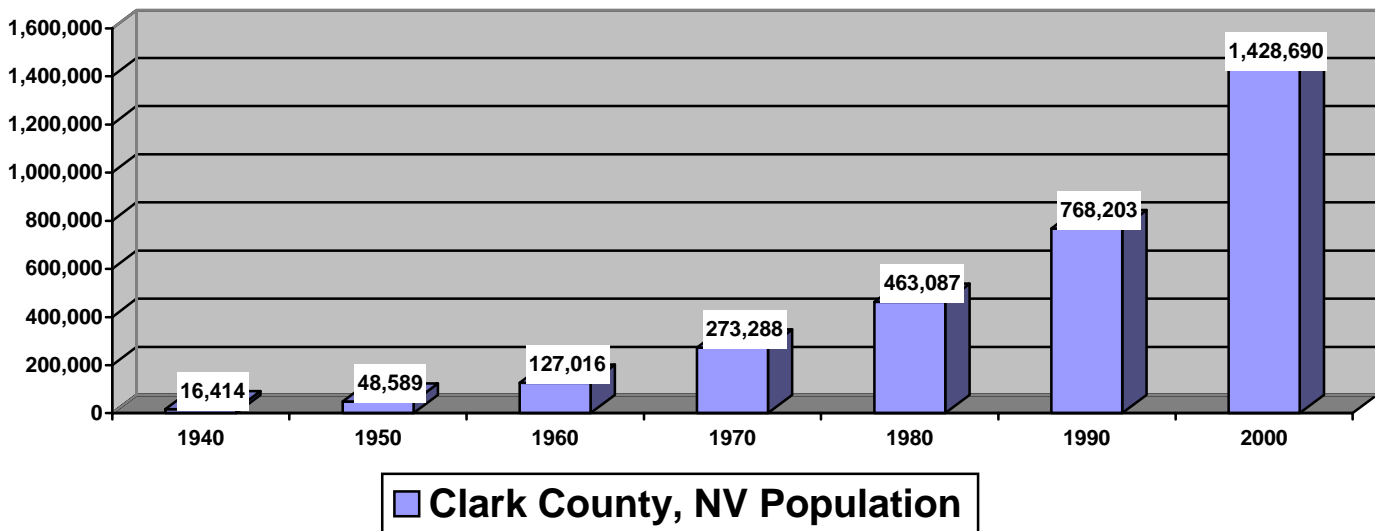


Figure 9. Population of Clark County, NV.

Average Las Vegas Minimum Temperature by Decade

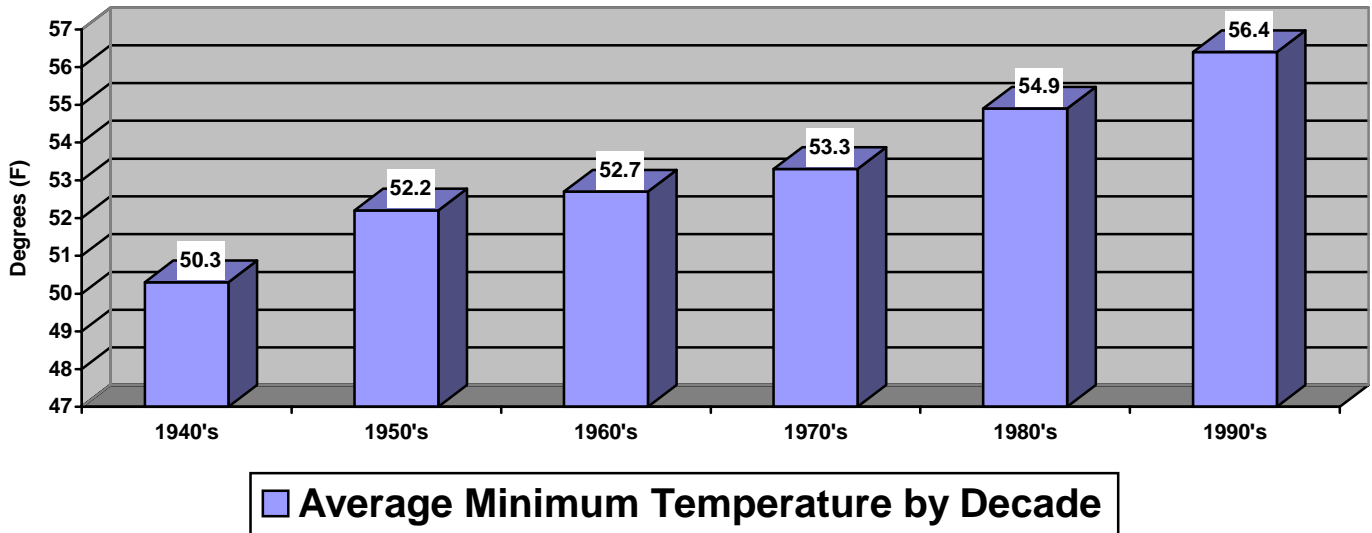


Figure 10. Average yearly Las Vegas minimum temperature by decade recorded at McCarran International Airport, Las Vegas, NV.

Average Las Vegas Maximum Temperature by Decade

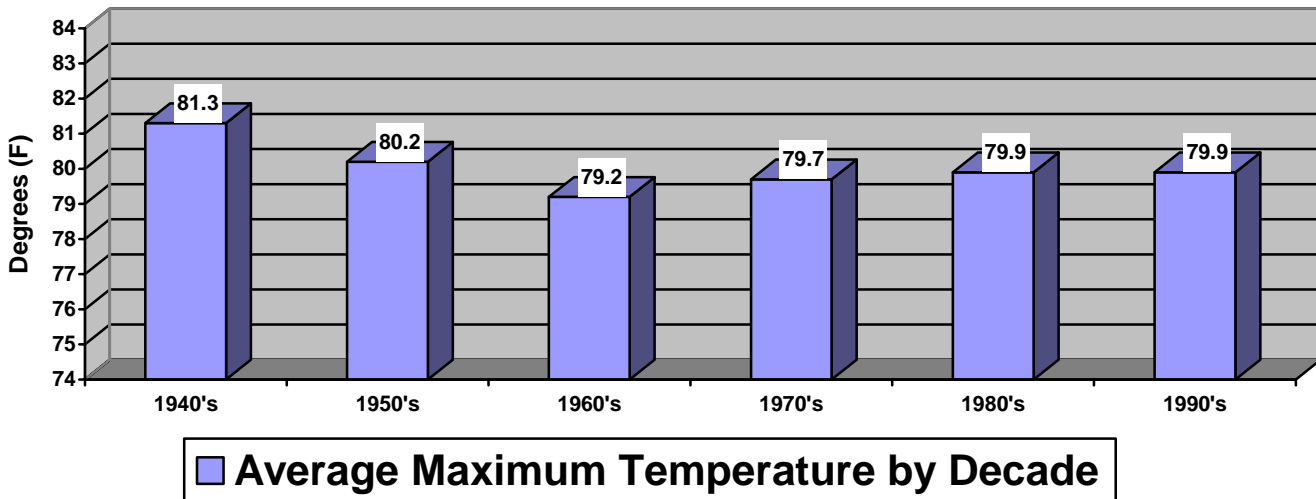


Figure 11. Average yearly Las Vegas maximum temperature by decade recorded at McCarran International Airport, Las Vegas, NV.

Las Vegas Normal Monthly Precipitation

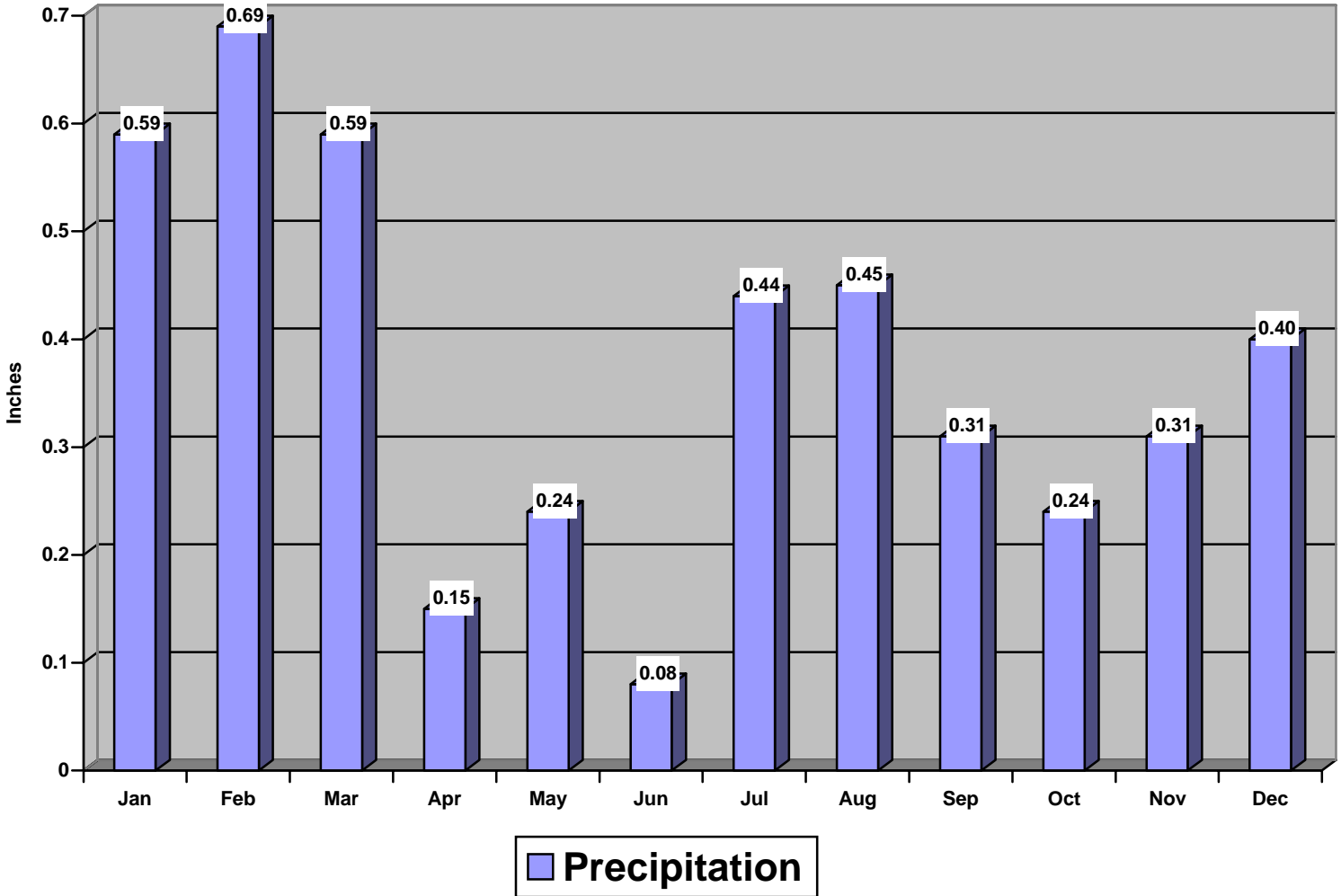


Figure 12. Normal Monthly Las Vegas Precipitation (1971-2000). Official readings taken at McCarran International Airport.

NOAA SCIENTIFIC AND TECHNICAL PUBLICATIONS

The National Oceanic and Atmospheric Administration was established as part of the Department of Commerce on October 3, 1970. The mission responsibilities of NOAA are to assess the socioeconomic impact of natural and technological changes in the environment and to monitor and predict the state of the solid Earth, the oceans and their living resources, the atmosphere, and the space environment of the Earth.

The major components of NOAA regularly produce various types of scientific and technical information in the following kinds of publications.

PROFESSIONAL PAPERS--Important definitive research results, major techniques, and special investigations.

CONTRACT AND GRANT REPORTS--Reports prepared by contractors or grantees under NOAA sponsorship.

ATLAS--Presentation of analyzed data generally in the form of maps showing distribution of rainfall, chemical and physical conditions of oceans and atmosphere, distribution of fishes and marine mammals, ionospheric conditions, etc.

TECHNICAL SERVICE PUBLICATIONS -- Reports containing data, observations, instructions, etc. A partial listing includes data serials; prediction and outlook periodicals; technical manuals, training papers, planning reports, and information serials; and miscellaneous technical publications.

TECHNICAL REPORTS--Journal quality with extensive details, mathematical developments, or data listings.

TECHNICAL MEMORANDUMS--Reports of preliminary, partial, or negative research or technology results, interim instructions, and the like.



Information on availability of NOAA publications can be obtained from:

NATIONAL TECHNICAL INFORMATION SERVICE

U. S. DEPARTMENT OF COMMERCE

5285 PORT ROYAL ROAD

SPRINGFIELD, VA 22161

