

NOAA Technical Memorandum NWS WR-190

GREAT SALT LAKE EFFECT SNOWFALL: SOME NOTES AND AN EXAMPLE

David M. Carpenter

National Weather Service Forecast Office
Salt Lake City, Utah
October 1985

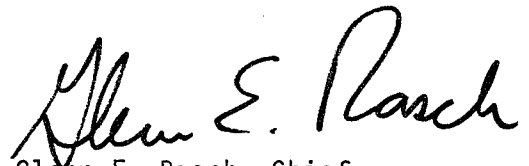
UNITED STATES
DEPARTMENT OF COMMERCE
Malcolm Baldrige, Secretary

National Oceanic and
Atmospheric Administration
John V. Byrne, Administrator

National Weather
Service
Richard E. Hallgren, Director



This publication has been reviewed
and is approved for publication by
Scientific Services Division,
Western Region.



Glenn E. Rasch, Chief
Scientific Services Division
Western Region Headquarters
Salt Lake City, Utah

TABLE OF CONTENTS

	<u>PAGE</u>
I. Introduction	1
II. Elements of a Great Salt Lake Effect Snowstorm	2
III. An Example	11
IV. Summary	14
V. Acknowledgments	15
VI. References	16

Great Salt Lake Effect Snowfall: Some Notes and an Example
David M. Carpenter
National Weather Service Forecast Office
Salt Lake City, Utah

I. Introduction

A lake effect snowfall along the Wasatch Front is typically a post cold frontal event in which the duration of snowfall downwind of the lee shore is extended in cold, northwest flow. Where one would normally expect snowfall to end with the passage of the upper level trough, lake effect snows usually continue for several hours after that event.

This paper is based on data taken from lake effect cases that occurred in the northwest flow following the passage of an upper level trough. Occasionally it appears that a lake effect may have occurred in southwest flow, which enhances or produces snowfall close to the northeast shoreline. These cases are relatively infrequent and are not included in this study. The necessity of a rapid infusion of cold air, usually in the form of a cold pocket, and the fact that this air would have to come from a southerly direction makes a conventional lake effect hard to come by. What probably occurs in most cases when snowfall is heavier along the northeast shoreline is a warm advection pattern associated with a cut-off low over Nevada as described by Williams (1962). Terrain produced upslope and differential friction from the lake surface to the shoreline would enhance snowfall in that vicinity, but a contribution of instability and moisture from the Great Salt Lake to the air mass is probably not a factor in most of these cases. Even after limiting the study to storms that occur in northwest flow, the effect of the Great Salt Lake on snowfall is not one that can be easily measured.

Following are some ideas resulting from the study of the various elements which should contribute to Great Salt Lake effect snowfalls. Twenty one lake effect cases dating from March 1971 to October 1984 were used. The last case October 18, 1984, is used as an example of a lake effect storm. This storm resulted in the heaviest 24 hour snowfall on record at the Salt Lake International airport. All of the cases produced four or more inches of snow at some point in the valley and seven of them produced over a foot. This set of data is not intended to represent a complete listing of all Great Salt Lake effect cases which occurred during this time period. Instead, it is more likely to be a representation of the most dramatic or most noticeable cases.

The percentage of annual snowfall in the Salt Lake Valley which may be attributable to lake effect is not known. However, the average number of lake effect cases per year has been estimated to be between 6 and 8 (Alder, 1977). The average number of days per year in which 0.1 inch of snow or more is measured at the Salt Lake International Airport is 34 (Figgins, 1984). Other studies indicate that lake effect from the Great Salt Lake probably occurs a rather small percentage of the time (Dunn, 1983). Considering these facts and the restrictive nature of the required temperatures and wind flows necessary to produce a lake effect, it is felt by most of the forecasting staff at the Salt Lake International Airport

that the total contribution of lake effect snowfall to the annual snowfall of the Salt Lake Valley¹ and nearby areas is probably rather small. Nevertheless, the lake effect can produce dramatic results, and is the object of much interest and speculation among those who watch the weather along the Wasatch Front.

II. Elements of a Great Salt Lake effect Snowstorm

A. Topographical Influences

The Lake is literally surrounded by mountain ranges which at one time formed islands and the shoreline (Fig. 1). The most prominent of these north-south mountain ranges is the Wasatch Range. The Great Salt Lake is oriented approximately along the 320 degree radial from the Salt Lake International Airport. The longest fetch, or over water trajectory, is approximately 75 miles long along that 320 degree radial. This fetch is realized in northwest flow for the Salt Lake Valley and in northerly flow for the Tooele Valley. Both valleys slope upward away from the Lake shore and form a rough half bowl shape.

In addition to upslope, the topography makes two other modifications to the surface wind that are worthy of note. The first of these is illustrated in Figure 2. An exaggeration of a simple balance of forces is used to explain frictional convergence along the lee shore of

¹ The term Salt Lake Valley will be used to refer to the Salt Lake City metropolitan area including all municipalities near Salt Lake City and located west of the Wasatch Mountains and east of the Oquirrh Mountains, south of the Great Salt Lake and north of the Transverse Mountains. The Transverse Mountains are shown in Figure 1 as the point of the Mountain just north of Alpine.

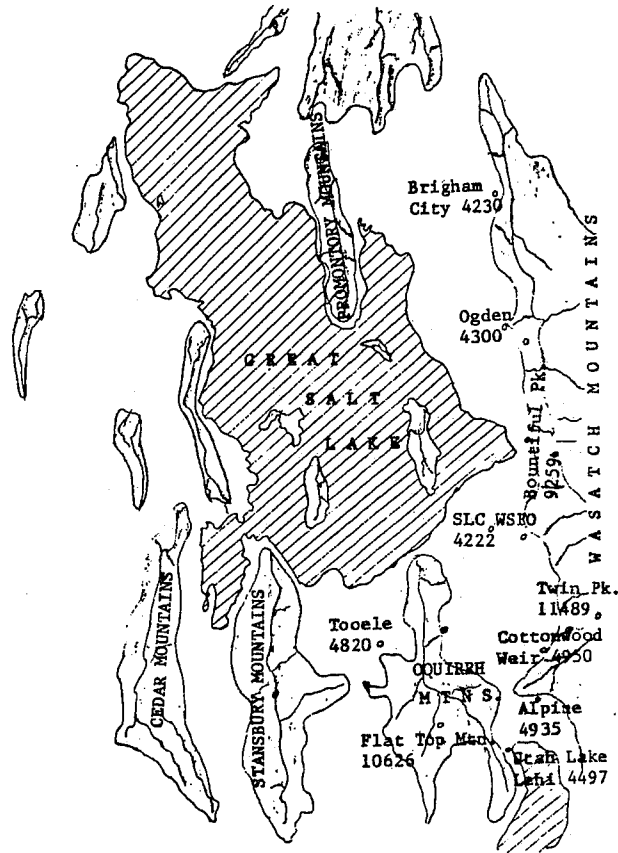


Figure 1 - Map of the Great Salt Lake and surrounding topographical features.

the Lake (Hess, 1959). In reality the dynamics and kinematics of this process are much more complicated. At all four points, the pressure gradient force (PG) is the same, but the frictional drag force (F) varies with the roughness of the surface. Over the relatively smooth lake surface the frictional force is less than that over land. Therefore, the wind velocity (V) is greater over the lake than over land. This difference in speed is enough to cause an area of low level convergence along the lee shoreline (Lavoie, 1972). The second modification to the low level flow is the channeling that occurs as air is pushed against the sides of the mountain ranges.

Figure 3 shows the resulting streamlines of a hypothetical case of

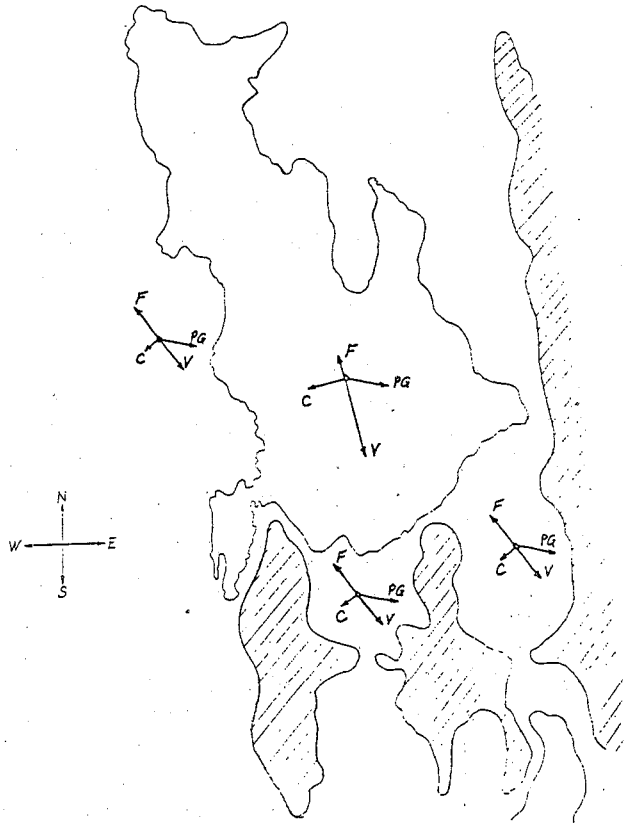


Figure 2 - A simple balance of forces illustration of the effect of differential friction on the surface wind flow in the vicinity of the Great Salt Lake.

northwest, low level flow. Note that the channeling effect and the backing of the wind as it moves onshore, combine to produce low level convergence in the upper portions of the Tooele Valley and along the east bench area of the Salt Lake Valley.

During some lake effect storms, the surface wind at the Salt Lake International Airport has been known to shift to the southwest and then to the southeast, while the wind at nearby surrounding stations remains northwesterly. This is possibly a reflection of something called a local front or boundary layer front by Garner (Garner, 1983). This is something similar to a miniature New England Coastal Front (Bosart, Vaudo, and Helsdon, 1972).

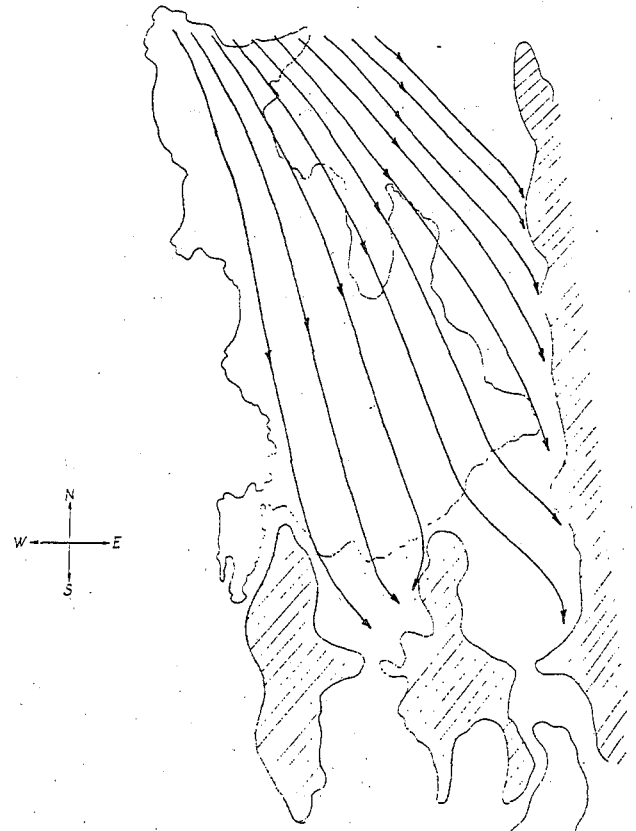


Figure 3 - An idealized illustration of the surface streamline analysis of northwest flow when the effects of differential friction and channelling by the Wasatch Front are taken into account.

In a Great Salt Lake local front, cold air at the surface becomes dammed up against the mountains in the upper portion of the valley and forms a small cold dome (Figure 4). Then, the low level flow coming off the Great Salt Lake rides up and over this cold dome, producing vertical motion. The colder air in the valley is maintained as being colder than the air coming off the Lake by convective down drafts and precipitation. Eventually with the help of a frictional disturbance along the lee shoreline, the flow in the valley becomes detached from the larger scale flow and can switch to a southerly direction. Without meso-scale data to confirm the above

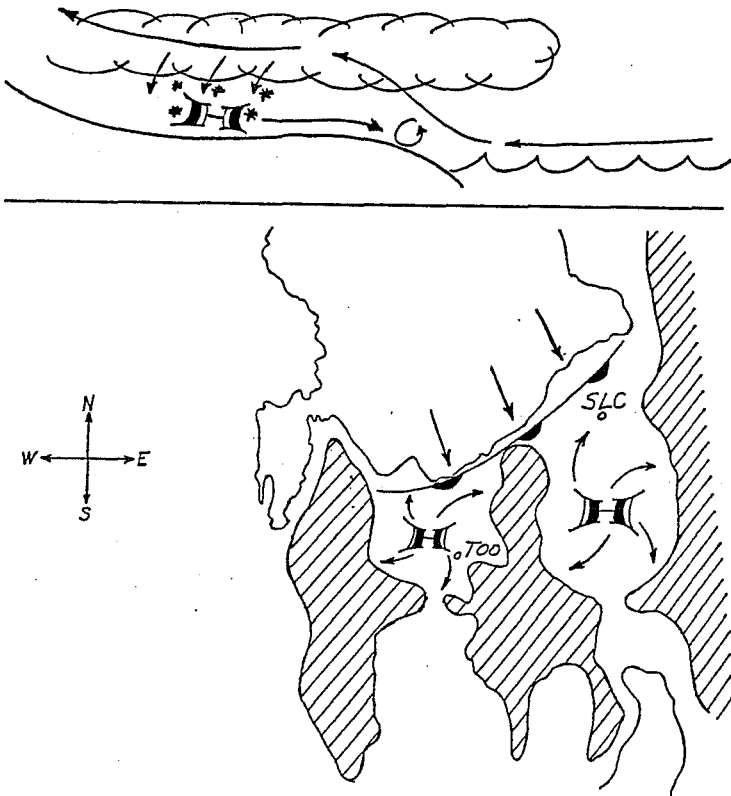


Figure 4 - Illustration of Great Salt Lake local front and cold air damming.

scenario, it is mostly conjecture, but not unreasonable.

B. Temperature of the Lake

The temperature of the Great Salt Lake is important to Lake Effect snowfall for two reasons: one, it indicates the amount of energy available in the surface of the Lake that may be transferred to the lowest layers of the atmosphere, to produce convection; and two, it determines the maximum allowable saturation vapor pressure of the air mass over the lake, for a transfer of moisture to occur between the Lake and the air mass (Ellenton and Danard, 1979).

Since the Great Salt Lake brine has a reduced vapor pressure compared to fresh water, the second consideration

cannot be overlooked. This will be dealt with in another section.

For the purpose of this study, it would be best to have a record of Great Salt Lake temperature measurements for several locations at the same time of the day over many years. For the purpose of real time forecasting, it would be best to have the same temperature data available in real time. However, neither of these situations is the case and we will have to settle for data taken at one point (the southern shore near the Salt Air Resort), twice a month by the United States Geological Survey. These data were then compared to the previous seven days actual mean air temperature at the Salt Lake International Airport (Figure 5) and to the normal mean air temperature of the airport (Figure 6). Two least squares curves were fitted to the data to predict the temperature of the Great Salt Lake. Figures 5 and 6 show the resulting least squares curves (solid lines with dots) and the distribution of data points about the curves (detached lines with dots). The correlation coefficient for the curve in figure 5 is 0.88 with a standard error of 4.78 degrees F. For figure 6, the correlation coefficient is 0.91 with a standard error of 4.21 degrees F.

For the 21 cases used in this study, the average Great Salt Lake temperature computed from the 7 day mean curve was 44.6. The average Lake temperature computed from the normal curve was 45.2. There is an obvious difference in the predicted Great Salt Lake temperature between the two curves. For example, using a temperature of 37 degrees F for the normal mean, produces a Lake temperature estimate of 42.6, while a 7 day mean temperature of 37 degrees F results in a Lake temperature estimate of 38.9 degrees F. Even though the difference is small in

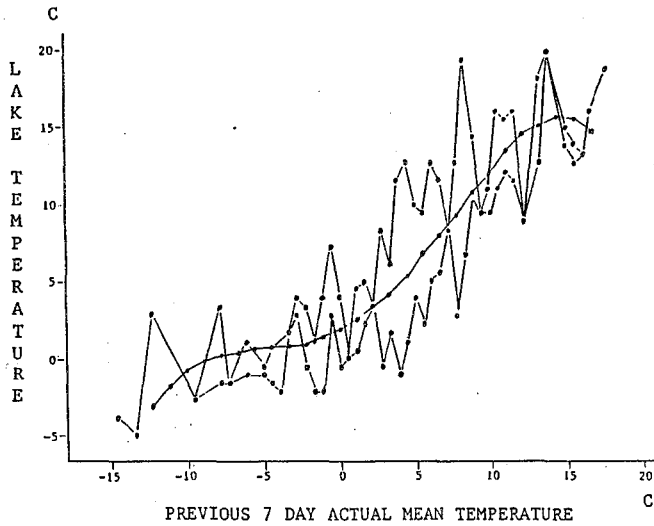


Figure 5 - Comparison of Great Salt Lake temperature versus the average of the previous 7 days actual mean air temperature for the Salt Lake City International Airport.

this example, it is easy to see that a period of abnormally warm or cold temperatures could cause a large difference in the two estimates.

Considering the size of the standard error for these two curves, as long as real time data on the temperature of the Lake are not available, an average of the two predictions will normally produce an acceptable prediction of the Great Salt Lake temperature. Averaging the two predictions will allow for an abnormally warm spell to be taken into account.

C. Instability Criteria

One of the necessary (but not sufficient) conditions for a significant Great Salt Lake effect snowfall is an unstable layer of air of sufficient depth to produce snow. This instability is achieved when the Lake is warm enough and/or the

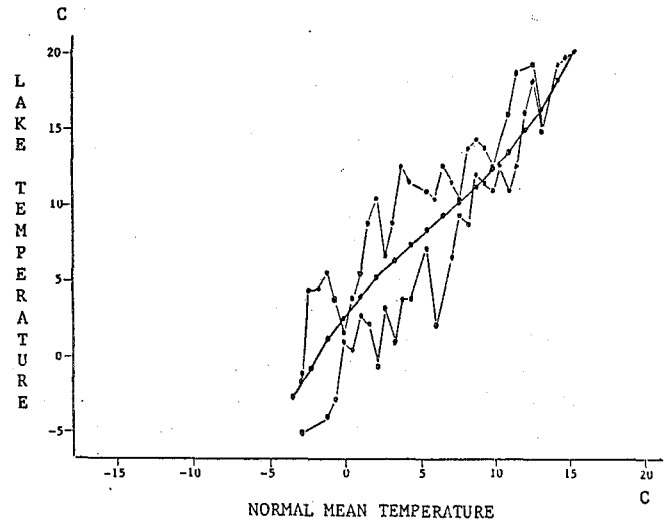


Figure 6 - Comparison of Great Salt Lake Temperature versus the normal mean temperature at the Salt Lake Airport for the date.

air mass aloft is cold enough to create a lapse rate which is moist adiabatic or greater. A convenient way to measure this is to use the temperature difference between the Lake and 700 mb (Rothrock, 1969). For comparison, using a surface pressure of 870 mb (a typical surface pressure) and a Lake temperature of 5 degrees C, a moist adiabatic lapse rate results in a Lake to 700 mb temperature difference of around 10 degrees C and a dry adiabatic lapse rate in a difference of around 17 degrees C.

The optimum Lake to 700 mb temperature difference appeared to be between 17 and 23 degrees C. Differences much greater than this (25 degrees or more) seemed to cause a decrease in convective activity rather than an increase. Temperatures of minus 18 degrees C at 700 mb were not uncommon in these cases. This is probably due to several factors related to the cold nature of

the air mass involved, but the most important of these is probably the fact that air which is that cold is generally very stable, and the lake effect convection is not strong enough to compensate for that stability.

D. Vapor Pressure Differential

The Great Salt Lake brine has a reduced vapor pressure compared to that of fresh water. A study was conducted to determine vapor pressure as a function of brine concentration and temperature (Dickson, Yepson, and Hales, 1965). The results are illustrated in figure 7. The first two curves, labeled $E_s(29.2\%)$ and $E_s(24.7\%)$, show the resulting vapor pressure vs. temperature curves for the Lake for two values of brine concentration. The curve labeled E_s is the same distribution for distilled water.

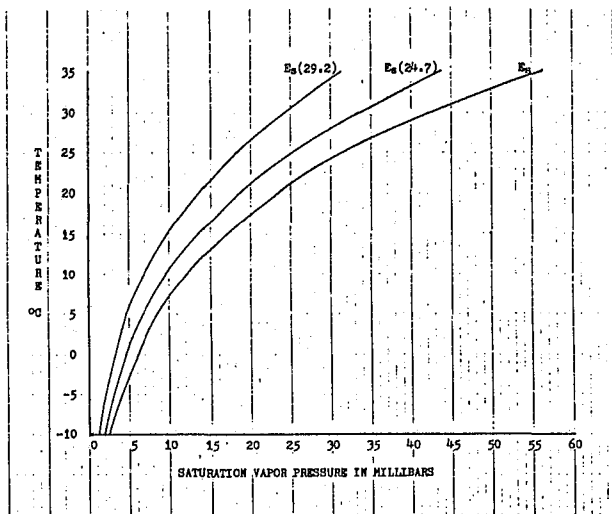


Figure 7 - Saturation vapor pressure taken over Great Salt Lake brine for varying degrees of salinity and over distilled water verses the temperature. Taken from Dickson, Yepson Hales, 1965).

A necessary requirement for a transfer of moisture from the Lake to the air mass, is that the vapor pressure over the Great Salt Lake brine must be greater than the vapor pressure of the overlying air mass. For example using the point on the 24.7% curve ($E_s(24.7)$) corresponding to a Lake temperature of 10 degrees C, we follow a constant vapor pressure line down to the distilled water curve (E_s) and then read the temperature on the scale on the left. The dewpoint temperature of the overlying air mass must be less than this temperature for a transfer of moisture to occur between the Lake and the air mass. In this case the dewpoint temperature of the air mass must be less than about 6.5 degrees C. Given the condition that the salinity of the Great Salt Lake is probably less than even 24.7%, a rough rule of thumb could be that a Lake to dewpoint temperature difference of 5 degrees C or greater would satisfy this condition.

The change in the precipitable water value in the downstream air mass as a result of Lake Effect is probably only a few hundredths of an inch. However since we are dealing with precipitable water values in the .10 to .40 inch range, and considering that the vertical motions produced by the terrain effects and convection can be considerable, the effect of this increase is worth mentioning (Harley, 1965).

If one were to assign all the elements of Great Salt Lake lake effect snow, a degree of importance in contributing to the rate of snowfall, it is felt that the vertical motion produced by low level convergence and upslope and the addition of sensible heat to the lower levels of the atmosphere, should receive a higher ranking than the addition of moisture by the lake.

E. Inversion Height

A limiting factor to lake effect snowfall and one which is strongly correlated to the end of the snowfall is the height of the subsidence inversion following the 700 mb trough (Rothrock, 1969). The height of this inversion serves to limit the vertical extent of the convective cloud tops. Rawinsonde traces from the 21 cases in this study indicate that an inversion height between 650 and 700 mb is probably the minimum for production of any precipitation. Once the inversion drops below 700 mb most storms are more or less over.

F. Weak Upper Disturbances

One ingredient that is apparently necessary for a significant lake effect is the presence of a weak upper level disturbance. This disturbance is often not shown in the operational vorticity analyses due to the large spacing between upper air stations. Most of the time the disturbance will show up as a temperature trough at 700 mb. The surface pressure trace may also reflect its presence in a slight hesitation, or a flat spot on an otherwise rising trace. Even though a few of the cases showed this, no common pattern was observed.

G. Location of Snowfall vs. Wind Direction

The data confirms the assumption that the direction of wind flow determines the location of the heaviest concentration of snow. The areas which received a discernable concentration of heavy snow during a lake effect were for the most part limited to four locations. These are shown in Figure 8. Area 1 appears to receive the most lake effect snowfall. Area 2 is not well covered with climatological stations, and therefore will not be represented very

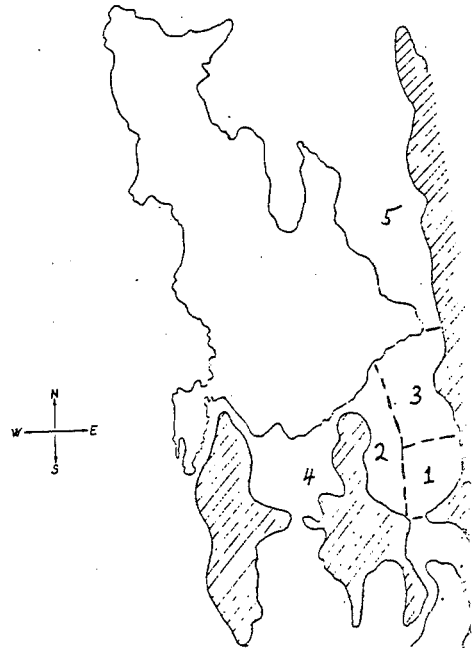


Figure 8 - Areas which receive lake effect snow.

well in the following discussion of that data. However notes taken at the Salt Lake City forecast office show a strong tendency for lake effect in this area. The third area includes the east foothill area of Salt Lake City and the valley floor from about 2100 south northward. This is possibly just an extension of the first area northward, but there does appear to be a separate response to wind direction. The fourth area is in the Tooele Valley near the town of Tooele. The fifth area is from Davis county northward, but as was mentioned before, no cases for this situation are included in this study.

Figure 9 is included to allow a comparison to the normal water equivalent precipitation for the months October through April. The remaining maps (figures 10 through 17) are cumulative water equivalent, storm total precipitations for groupings of lake effect storms. The intention is to show a pattern of snowfall rather than to imply a

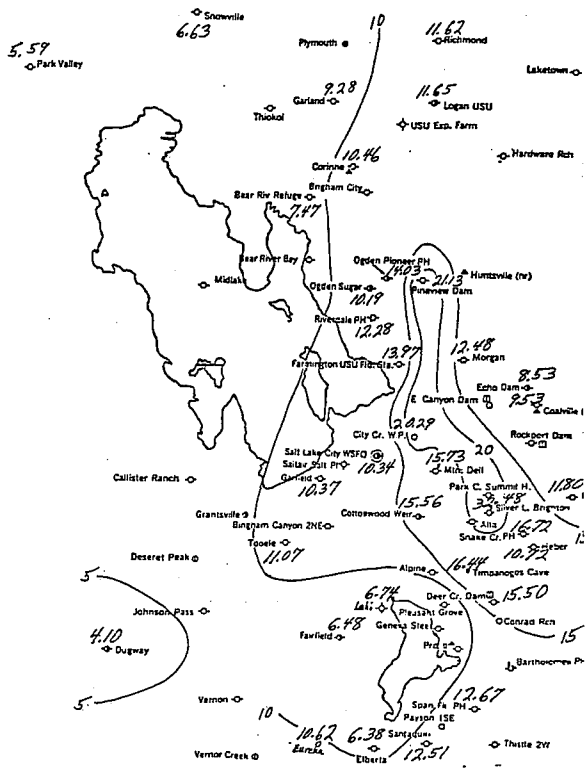


Figure 9 - October through April normals for water equivalent precipitation in the vicinity of the Great Salt Lake.

quantitative average of some kind. The 700 mb wind direction was used for two reasons; one, it is convenient to obtain since it is routinely observed and, it is not as subject to frequent fluctuations due to terrain or local drainage effects.

Data are only presented for situations in which three or more cases would apply. In figures 11 through 17, each case was categorized using the average 700 mb wind direction, during the lake effect. Many cases are included in two maps because their average 700 mb wind direction was an even multiple of ten and thus fell on the line between two categories. Figure 10 shows the cumulative precipitation for all Lake Effect cases. Note that the area of maximum snowfall extends approximately from Bountiful southward to Sandy, and has been drawn to include Little Cottonwood Canyon to Alta (see Figure 18 for these locations). This

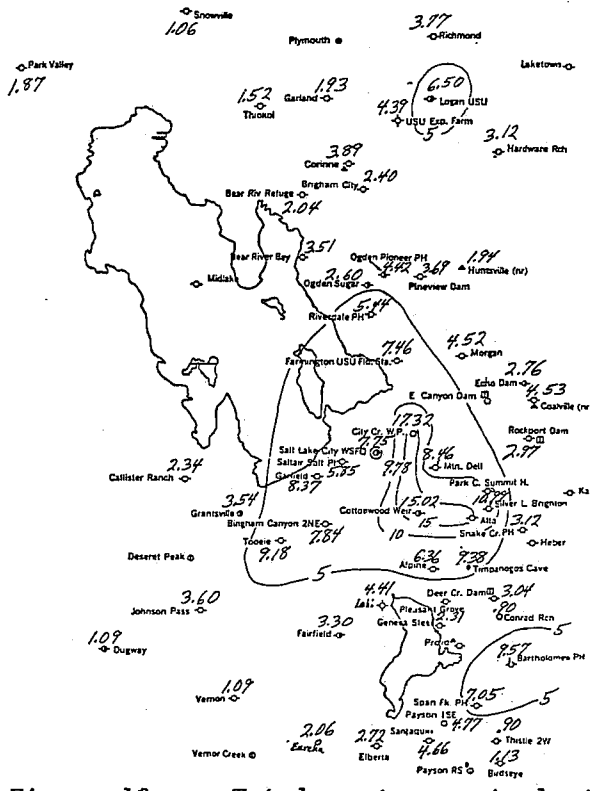


Figure 10 - Total water equivalent precipitation for all of the 21 Lake Effect snowfall cases in the study.

comprises areas 1 and 3 mentioned above. A complete set of data for Alta was not available in the monthly Utah Climatological Data Publication, which was used in this study. However, it is felt by the author that Alta would easily fall within the 15 inch isopleth.

Figures 11 and 12 show the precipitation data for cases with an average 700 mb wind direction from 330 to 350 degrees inclusive. The greatest maximum of heavy snow is located in the Tooele Valley, or area 4 as described above. Area 2, or the western portion of the Salt Lake Valley also receives heavy snowfall in many of these cases. A dramatic switch in the location of the greatest maximum eye occurs when the 700 mb wind direction becomes more westerly. This is shown in Figure 13 with the average 700 mb wind direction from 320 to 330 degrees (inclusive). The heavy snowfall greatest maximum in this case is

located in the southern portion of the Salt Lake Valley, or area 1. Average 700 mb wind directions from 290 to 320 degrees produce essentially the same results (figures 13 through 16). As the wind direction becomes even more westerly as in figure 17, a new maximum center appears to develop along the east bench area of the city or area three. A study of the mean precipitation for a number of cases vs. 700 mb wind direction for the Salt Lake Airport, Tooele, Alta, and others was conducted by Elliot, Thompson, and Griffith (1985). The results of that study agree with the patterns shown in this section.

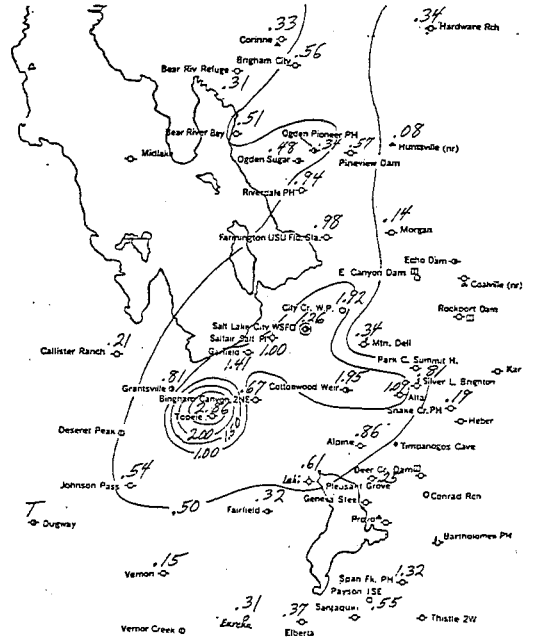


Figure 12 - Total water equivalent precipitation for all Lake cases in which the average 700 mb wind direction was from 330 to 340 degrees (inclusive).

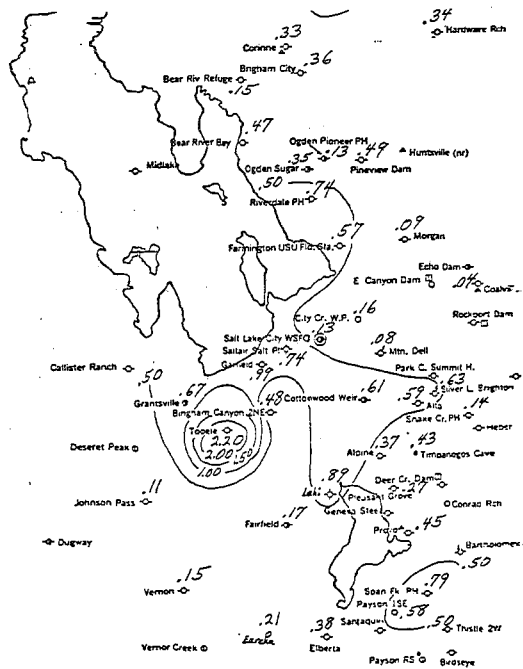


Figure 11 - Total water equivalent precipitation for all Lake Effect cases in which the average 700 mb wind direction was from 340 to 350 degrees (inclusive).

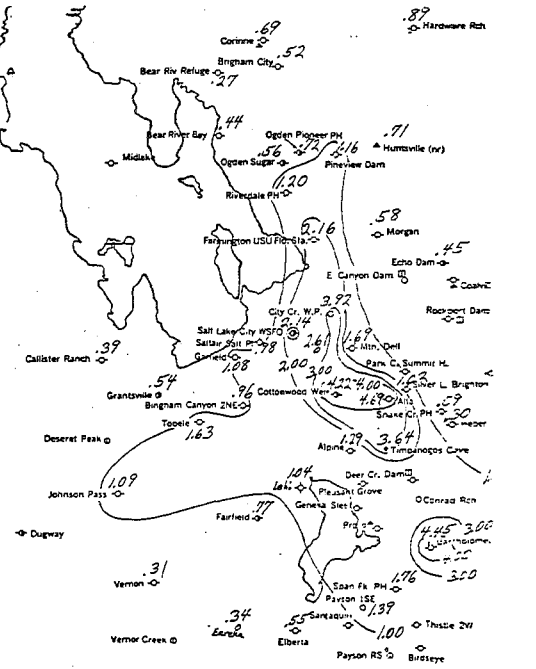


Figure 13 - Total water equivalent precipitation for all Lake cases in which the average 700 mb wind direction was from 320 to 330 degrees (inclusive).

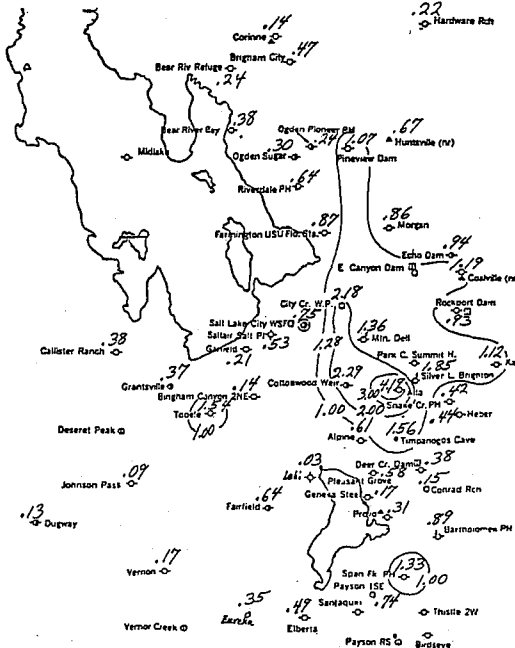


Figure 14 - Total water equivalent precipitation for all Lake cases in which the average 700 mb wind direction was from 310 to 320 degrees (inclusive).

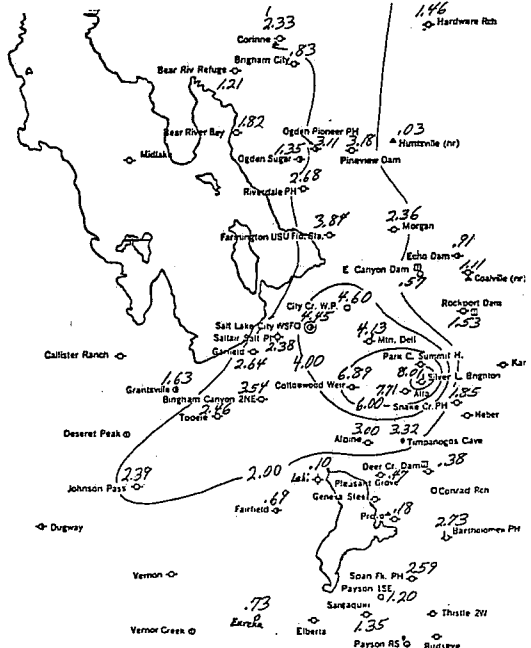


Figure 16 - Total water equivalent precipitation for all Lake cases in which the average 700 mb wind direction was from 290 to 300 degrees (inclusive).



Figure 15 - Total water equivalent precipitation for all Lake cases in which the average 700 mb wind direction was from 300 to 310 degrees (inclusive).

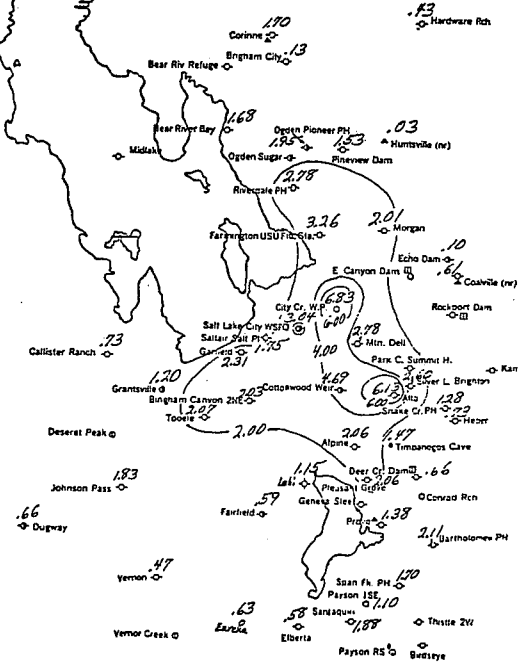


Figure 17 - Total water equivalent precipitation for all Lake cases in which the average 700 mb wind direction was from 280 to 290 degrees (inclusive).

III. An Example

On October 17-18, 1984 a record 18.4 inches of snow fell at the Salt Lake City International Airport. This surpassed the previous heaviest 24 hour accumulation of 18.1 inches, which fell in December 1972. All but one inch of this record amount fell between 6:30 p.m. MDT on the 17th and 11:30 a.m. on the 18th. The heavy snow fell in a relatively small area in the lee of the Great Salt Lake, including the area from southern Davis County to southern Salt Lake County, generally east of the meridian of the airport (Figure 18). Little or no snow fell on the west side of the valley. It resulted in approximately one million dollars damage to the Salt Lake City area, due mostly to downed power lines and broken trees which

had not yet shed their leaves. This storm contained many of the elements of a classic lake effect snowstorm.

The temperature of the Great Salt Lake was estimated to be around 10 degrees C. This was later confirmed by a call to the United States Geological Survey, who had measured the temperature a few days before the event.

Figure 19 shows the 700 mb height and temperature analysis for 12Z on the 18th. Note the strong cold advection which occurred during the event. Temperatures at 700 mb would have maintained a Lake to 700 mb difference greater than 17 degrees C throughout the time in question. The average 700 mb wind direction was

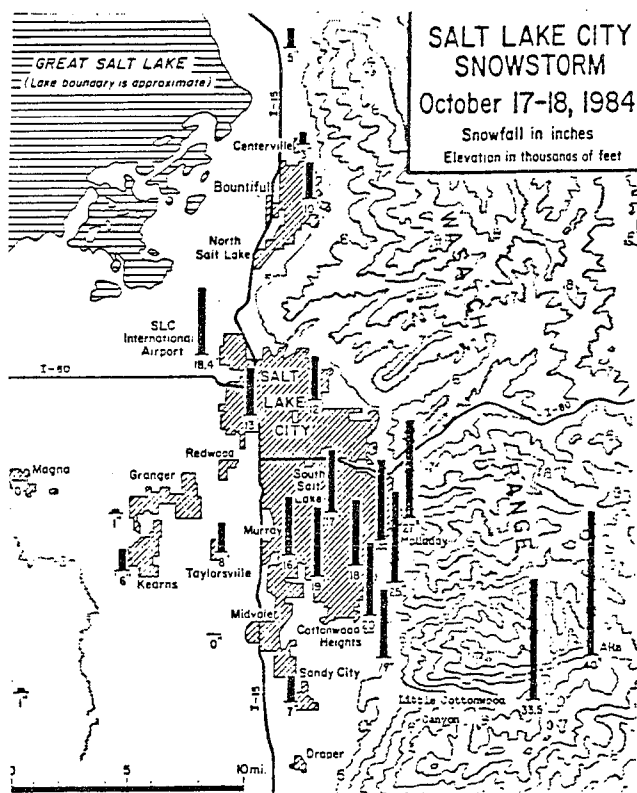


Figure 18 - Storm total snowfall for October 17-18, 1984. This storm broke all previous records for 24 hour snowfall.

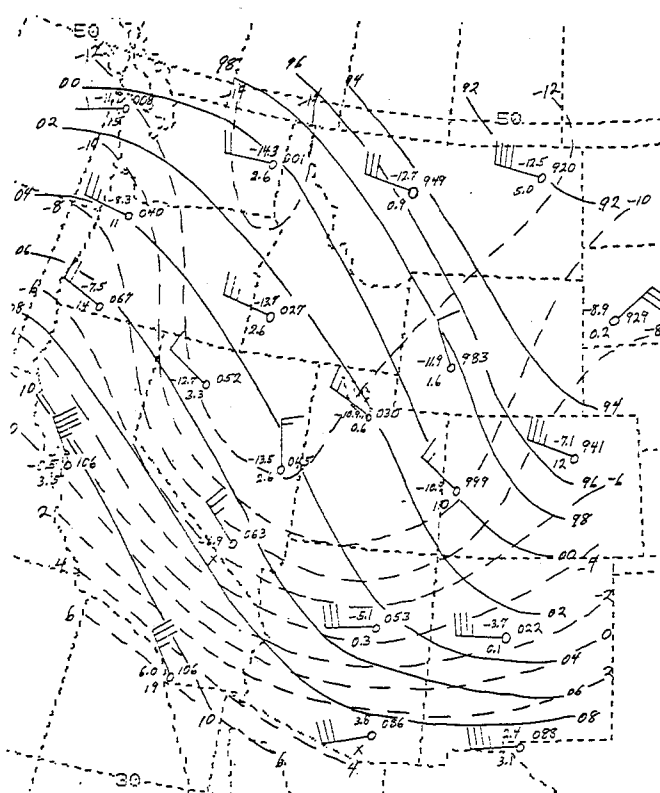


Figure 19 - 700 mb analysis for 12Z October 18, 1984. Note the sharp temperature trough.

290 degrees. Note the temperature trough indicating the weak disturbance embedded in the northwest flow. Figures 20, 21, and 22 show the 500 mb height and vorticity analyses for the period. Note that during the time from 00Z on the 18th to 00Z on the 19th, 500 mb vorticity advection over Northern Utah was either negative or neutral.

The precipitable water values for the western U.S. at 12Z on the 18th are shown in figure 23. Note first of all the difference between Salt Lake's value and those upstream. Second note the air mass alone would not be capable of producing the 1.76 inches of water which fell.

Figures 24 and 25 show the surface analyses for 06Z and 18Z on the 18th. Surface winds at the airport remained out of the northwest during the storm,

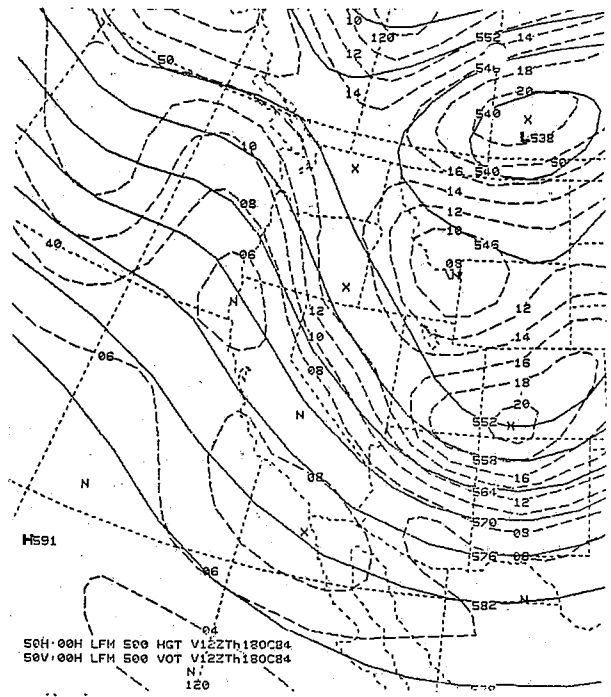


Figure 21 - NMC 500 mb height and vorticity analysis for 12Z Thursday October 18, 1984.

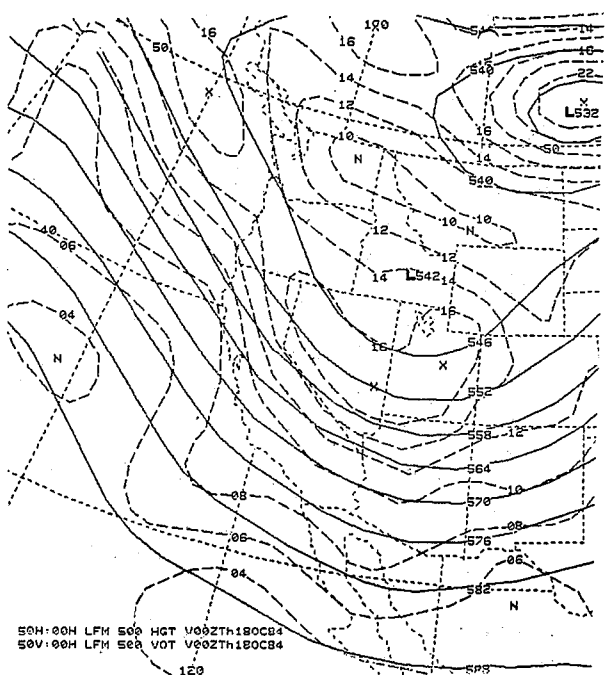


Figure 20 - NMC 500 mb height and vorticity analysis for 00Z Thursday October 18, 1984.

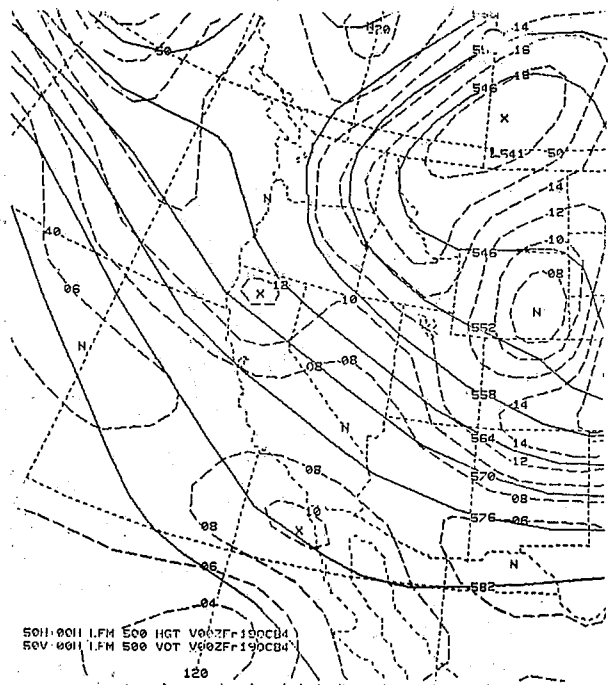


Figure 22 - NMC 500 mb height and vorticity analysis for 00Z Friday October 19, 1984.

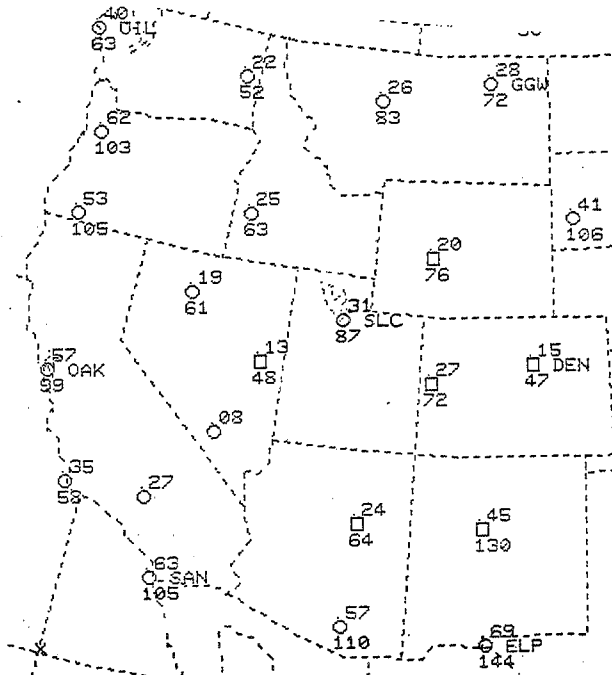


Figure 23 - Precipitable water (top number) and percent of normal (bottom) for the Western States, 12Z Thursday October 18, 1984.

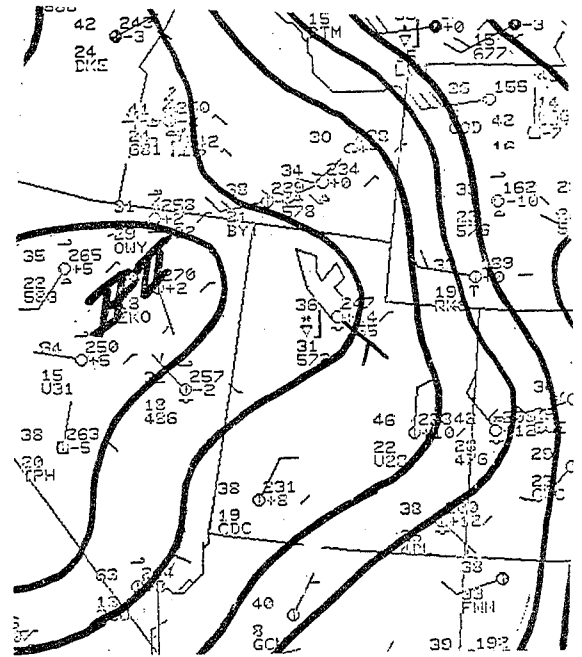


Figure 25 - Surface analysis for the Western States for 18Z Thursday October 18, 1984.

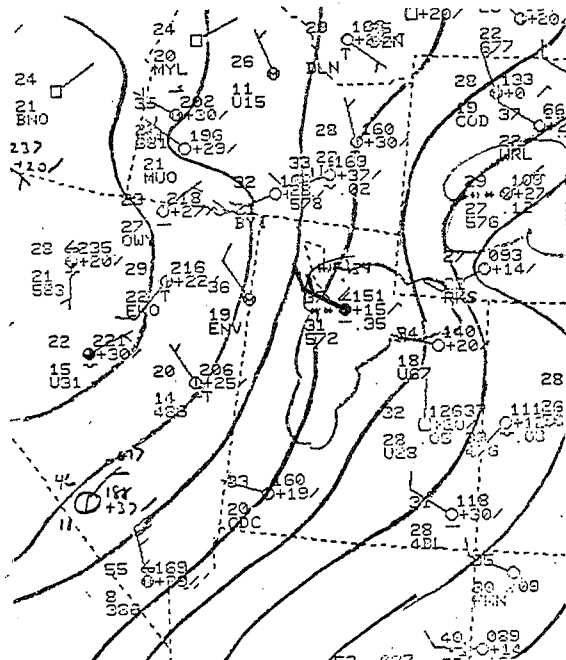


Figure 24 - Surface analysis for the Western States for 06Z Thursday October 18, 1984.

then shifted to southwesterly at 18Z. The wind shift was possibly an indication of the development of a local front. The Salt Lake City dewpoint temperature remained at a steady 31 degrees F while surrounding stations are in some cases 10 degrees F lower. Upstream dewpoints in this case were in the neighborhood of -5 degrees C. This produces a Lake to air mass dewpoint temperature difference of about 15 degrees C. As discussed earlier, a difference of only 5 degrees is necessary for a transfer of moisture from the Lake to the atmosphere.

Another factor was a jet streak which passed just south of Salt Lake City (Figures 26 and 27). The left front quadrant of the jet streak probably passed over the area between 06Z and 12Z on the 18th, which was the time of heaviest snowfall. Due to missing data for several stations

on the 12Z map, the exact pattern of isotach contours is unknown. This quadrant of the jet streak would provide dynamic support to the convection in the form of upward vertical motion.

The GOES 6 pictures in figures 28 through 30 show the dissipation stage of the cloud cover over the Lake during the last few hours of the storm. Early in the course of events, the Lake is nearly covered with clouds. The cloud cover then dissipates from north to south until only a narrow band remains along the southeastern shore at around 18Z.

IV. Summary

The conditions which are apparently necessary for Great Salt Lake lake effect snowfall could be

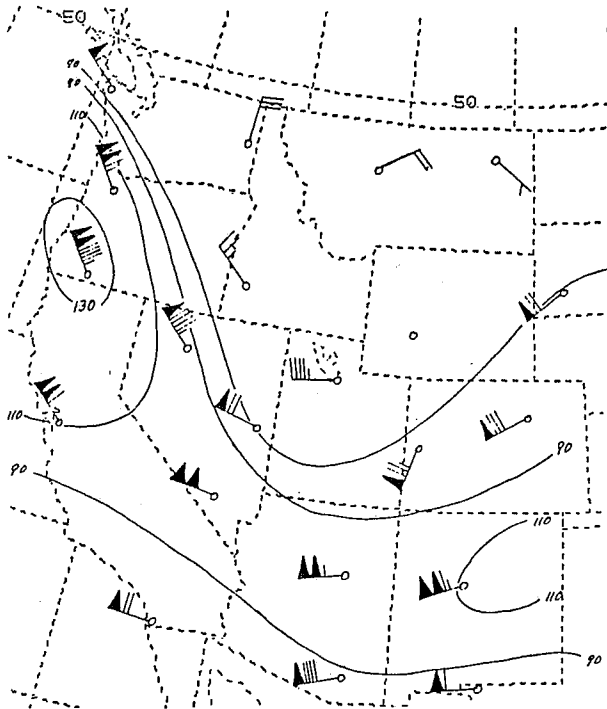


Figure 26 - 250 mb winds and isotach analysis for 00Z Thursday October 18, 1984.

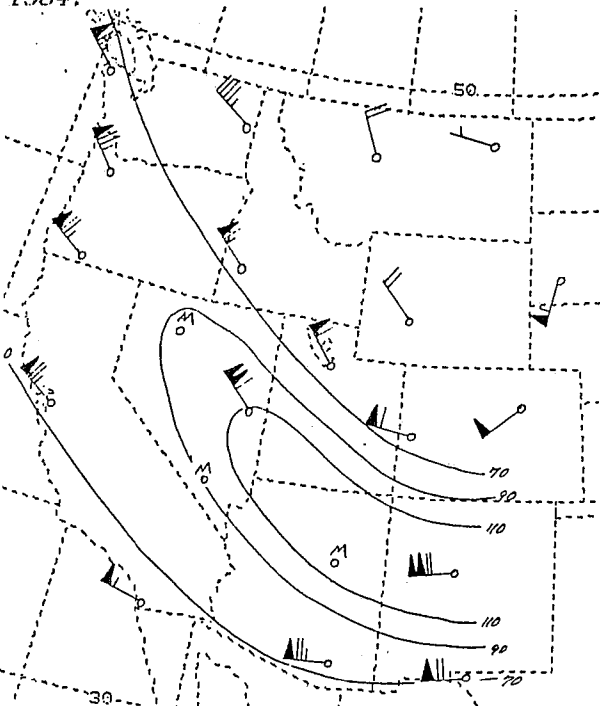


Figure 27 - 250 mb winds and isotach analysis for 12Z Thursday October 18, 1984.

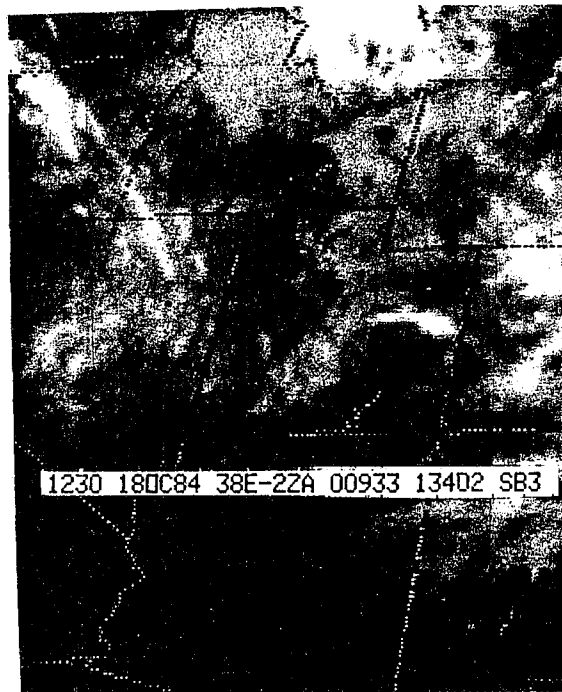


Figure 28 - GOES 6 picture for 1230Z, Thursday October 18, 1984.

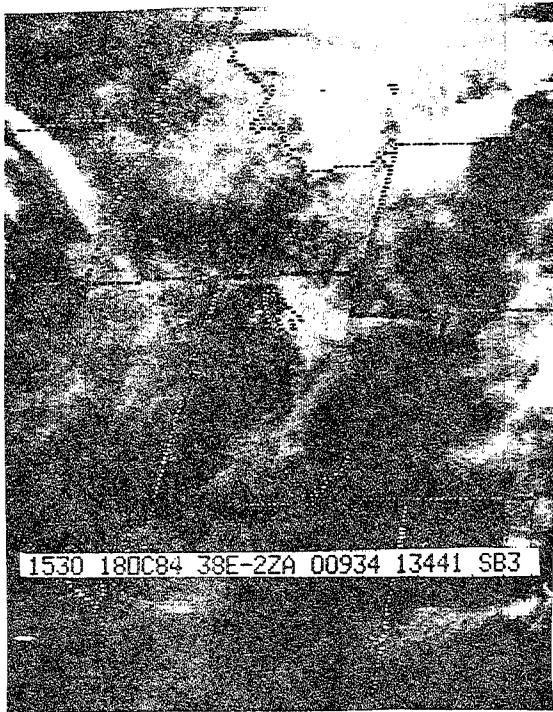


Figure 29 - GOES 6 picture for 1530Z,
Thursday October 18, 1984.

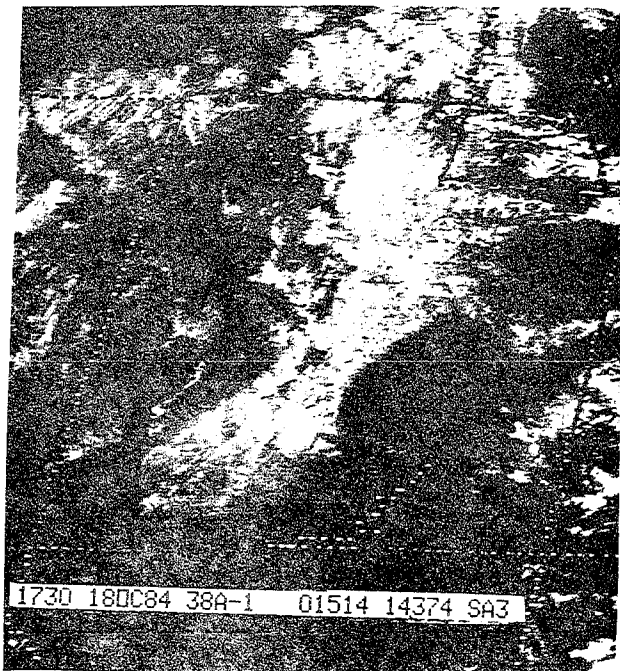


Figure 30 - GOES 6 picture for 1730Z,
Thursday October 18, 1984.

summarized as follows. The average 700 mb wind direction should be between 270 and 360 degrees for most cases. The optimum range for the difference between the temperature of the Great Salt Lake and the average 700 mb temperature is between 17 and 23 degrees Celsius. The difference between the temperature of the Great Salt Lake and the upstream dewpoint temperature should be at least 5 degrees C. Some kind of upper level support such as a temperature trough or a jet streak or both should be available for a significant snowfall.

V Acknowledgments

This study is the brain child of William Alder, who saw the need for more information on lake effect snowfall and provided much advice and technical guidance. Thanks also to those who reviewed earlier drafts and made comments and corrections, especially Western Region Scientific Services Division and the staff of the Salt Lake City Forecast Office. I am grateful to Greg Smith who spent many hours transcribing data for the cases. Thanks to Dr. Joseph Schaefer for the loan of several years of data on microfilm.

REFERENCES

- Alder, William J., 1977: Unpublished notes on Great Salt Lake Effect Snowfall. National Weather Service Forecast Office, 337 North 2370 West, Salt Lake City, Utah 84116
- Bosart, Lance F., Vaudo, Cosmo J. and Helsdon, John H., 1972: Coastal Frontogenesis. Journal of Applied Meteorology 11 1236-1258
- Dickson, Don R., Yepson, John H. and Hales, J. Vern, 1965: Saturated Vapor Pressures over Great Salt Lake Brine. Journal of Geophysical Research 70 500-503
- Dunn, Lawrence B., 1983: Quantitative and Spacial Distribution of Winter Precipitation Along Utah's Wasatch Front. NOAA Technical Memorandum NWS WR-181
- Ellenton, Gloria E. and Danard, Maurice B., 1979: Inclusion of Sensible Heating in Convective Parameterization Applied to Lake Effect Snow. Monthly Weather Review 107 551-565
- Elliot, Robert D., Thompson, John R., and Griffith, Don A., 1985: Estimated Impacts of West Desert Pumping on Local Weather. NAWC Report SLWM 85-1. North American Weather Consultants 8-1 - 8-9
- Figgins, Wilbur E. 1984: Climate of Salt Lake City Utah 2nd Revision. NOAA Technical Memorandum NWS WR-152
- Garner, Stephen, 1983: A Linear Analysis of Relevance to Local Frontogenesis. Thesis proposal. Massachusetts Institute of Technology, Cambridge, Massachusetts 02139
- Harley, W.S., 1965: An Operational Method for Quantitative Precipitation Forecasting. Journal of Applied Meteorology 4 no. 3 305-319
- Hess, Seymour L., 1959: Introduction to Theoretical Meteorology. Holt, Rinehart, and Winston. 179-180
- Lavoie, Ronald L., 1972: A Mesoscale Numerical Model of Lake-Effect Storms. Monthly Weather Review 29 1029-1040
- Rothrock, H.J., 1969: An Aid to Forecasting Significant Lake Snows. ESSA Technical Memorandum WBTM CR-30
- Williams, Philip Jr., 1962: Forecasting the Formation of Cutoff Lows Over the Western Plateau. U.S. Weather Bureau Manuscript, Salt Lake City, Utah

- 121 Climatological Prediction of Cumulonimbus Clouds in the Vicinity of the Yucca Flat Weather Station. R. F. Quiring, June 1977. (PB-271-704/AS)
- 122 A Method for Transforming Temperature Distribution to Normality. Morris S. Webb, Jr., June 1977. (PB-271-742/AS)
- 124 Statistical Guidance for Prediction of Eastern North Pacific Tropical Cyclone Motion - Part I. Charles J. Neumann and Preston W. Leftwich, August 1977. (PB-272-66)
- 125 Statistical Guidance on the Prediction of Eastern North Pacific Tropical Cyclone Motion - Part II. Preston W. Leftwich and Charles J. Neumann, August 1977. (PB-273-135/AS)
- 127 Development of a Probability Equation for Winter-Type Precipitation Patterns in Great Falls, Montana. Kenneth B. Wielke, February 1978. (PB-281-387/AS)
- 128 Hand Calculator Program to Compute Parcel Thermal Dynamics. Dan Gudge, April 1978. (PB-283-888/AS)
- 129 Fire Whirls. David W. Goers, May 1978. (PB-283-363/AS)
- 130 Flash-Flood Procedure. Ralph G. Hatah and Gerald Williams, May 1978. (PB-286-814/AS)
- 131 Automated Fire-Weather Forecasts. Mark A. Moliner and David E. Olson, September 1978. (PB-289-916/AS)
- 132 Estimates of the Effects of Terrain Blocking on the Los Angeles WSR-74C Weather Radar. R. G. Pappas, R. Y. Lee, B. W. Finke, October 1978. (PB299767/AS)
- 133 Spectral Techniques in Ocean Wave Forecasting. John A. Jannuzzi, October 1978. (PB291917/AS)
- 134 Solar Radiation. John A. Jannuzzi, November 1978. (PB291955/AS)
- 135 Application of a Spectrum Analyzer in Forecasting Ocean Swell in Southern California Coastal Waters. Lawrence P. Kierulff, January 1979. (PB292716/AS)
- 136 Basic Hydrologic Principles. Thomas L. Dietrich, January 1979. (PB292247/AS)
- 137 LFM 24-Hour Prediction of Eastern Pacific Cyclones Refined by Satellite Images. John R. Zimmerman and Charles P. Ruscha, Jr., Jan. 1979. (PB294324/AS)
- 138 A Simple Analysis/Diagnosis System for Real Time Evaluation of Vertical Motion. Scott Hefflick and James R. Fors, February 1979. (PB294216/AS)
- 139 Aids for Forecasting Minimum Temperature in the Wenatchee Frost District. Robert S. Robinson, April 1979. (PB298339/AS)
- 140 Influence of Cloudiness on Summer Time Temperatures in the Eastern Washington Fire Weather District. James Holcomb, April 1979. (PB298674/AS)
- 141 Comparison of LFM and FMW Precipitation Guidance for Nevada During Dorse. Christopher Hill, April 1979. (PB298613/AS)
- 142 The Usefulness of Data from Mountain Top Fire Lookout Stations in Determining Atmospheric Stability. Jonathan W. Corey, April 1979. (PB298993/AS)
- 143 The Depth of the Marine Layer at San Diego as Related to Subsequent Cool Season Precipitation Episodes in Arizona. Ira S. Brenner, May 1979. (PB298817/AS)
- 144 Arizona Cool Season Climatological Surface Wind and Pressure Gradient Study. Ira S. Brenner, May 1979. (PB298909/AS)
- 145 On the Use of Solar Radiation and Temperature Models to Estimate the Snap Bean Maturity Date in the Willamette Valley. Earl M. Bates, August 1979. (PB30-163971)
- 146 The BART Experiment. Morris S. Webb, October 1979. (PB30-155112)
- 147 Occurrence and Distribution of Flash Floods in the Western Region. Thomas L. Dietrich, December 1979. (PB30-160344)
- 149 Misinterpretations of Precipitation Probability Forecasts. Allan M. Murray, Sarah Livantstein, Garth Fisenhoff, and Robert L. Winkler, February 1980. (PB30-174576)
- 150 Annual Data and Verification Tabulation - Eastern and Central North Pacific Tropical Storms and Hurricanes 1979. Emil B. Gunther and Staff, EPAC, April 1980. (PB30-220436)
- 151 NMC Model Performance in the Northeast Pacific. James E. Overland, PMEL-ERL, April 1980. (PB30-196653)
- 152 Climate of Salt Lake City, Utah. Wilbur E. Figgins, October 1934, 2nd Revision. (PB35 123675)
- 153 An Automatic Lightning Detection System in Northern California. James E. Rea and Chris E. Fontana, June 1930. (PB30-225592)
- 154 Regression Equation for the Peak Wind Gust 6 to 12 Hours in Advance at Great Falls During Strong Downslope Wind Storms. Michael J. Card, July 1930. (PB31-108367)
- 155 A Raininess Index for the Arizona Monsoon. John M. Tenhaken, July 1930. (PB31-106494)
- 156 The Effects of Terrain Distribution on Summer Thunderstorm Activity at Reno, Nevada. Christopher Dean Hill, July 1930. (PB31-102501)
- 157 An Operational Evaluation of the Seefeld/Oliver Technique for Estimating Precipitation Rates from Satellite Imagery. Richard Ochoa, August 1930. (PB31-108227)
- 158 Hydrology Practice. Thomas Dietrich, September 1930. (PB31-124033)
- 159 Tropical Cyclone Effects on California. Arnold Court, October 1930. (PB31-133779)
- 160 Eastern North Pacific Tropical Cyclone Occurrences During Intraseasonal Periods. Preston W. Leftwich and Gail M. Brown, February 1931. (PB31-205494)
- 161 Solar Radiation as a Sole Source of Energy for Photovoltaics in Las Vegas, Nevada, for July and December. Darryl Randerson, April 1931. (PB31-224502)
- 162 A Systems Approach to Real-Time Runoff Analysis with a Deterministic Rainfall-Runoff Model. Robert J. C. Burnash and R. Larry Ferral, April 1931. (PB31-224493)
- 163 A Comparison of Two Methods for Forecasting Thunderstorms at Luke Air Force Base, Arizona. Lt. Colonel Keith R. Cooley, April 1931. (PB31-226393)
- 164 An Objective Aid for Forecasting Afternoon Relative Humidity Along the Washington Cascade East Slopes. Robert S. Robinson, April 1931. (PB31-231774)
- 165 Annual Data and Verification Tabulation, Eastern North Pacific Tropical Storms and Hurricanes 1930. Emil B. Gunther and Staff, May 1931. (PB32-230376)
- 166 Preliminary Estimates of Wind Power Potential at the Nevada Test Site. Howard G. Booth, June 1931. (PB32-127036)
- 167 ARAP User's Guide. Mark Mathewson, July 1931. (revised September 1931). (PB32-193783)
- 168 Forecasting the Onset of Coastal Gales Off Washington-Oregon. John R. Zimmerman and William D. Burton, August 1931. (PB32-127051)
- 169 A Statistical-Dynamical Model for Prediction of Tropical Cyclone Motion in the Eastern North Pacific Ocean. Preston W. Leftwich, Jr., October 1931. (PB32-153283)
- 170 An Enhanced Plotter for Surface Airways Observations. Andrew J. Spry and Jeffrey L. Anderson, October 1931. (PB32-153283)
- 171 Verification of 72-Hour 500-mb Map-Type Predictions. R. F. Quiring, November 1931. (PB32-159098)
- 172 Forecasting Heavy Snow at Wenatchee, Washington. James W. Holcomb, December 1931. (PB32-177783)
- 173 Central San Joaquin Valley Type Maps. Thomas R. Crossan, December 1931. (PB32-196044)
- 174 ARAP Test Results. Mark A. Mathewson, December 1931. (PB32-193103)
- 175 Annual Data and Verification Tabulation Eastern North Pacific Tropical Storms and Hurricanes 1931. Emil B. Gunther and Staff, June 1932. (PB32-232420)
- 176 Approximations to the Peak Surface Wind Gusts from Desert Thunderstorms. Darryl Randerson, June 1932. (PB32-253086)
- 177 Climate of Phoenix, Arizona. Robert J. Schmidt, April 1932 (revised March 1933). (PB3246361)
- 178 Annual Data and Verification Tabulation, Eastern North Pacific Tropical Storms and Hurricanes 1932. E. B. Gunther, June 1933. (PB33 106078)
- 179 Stratified Maximum Temperature Relationships Between Sixteen Zone Stations in Arizona and Respective Key Stations. Ira S. Brenner, June 1933. (PB33-244904)
- 180 Standard Hydrologic Exchange Format (SHEF) Version I. Phillip A. Pastorkis, Vernon G. Bissel, David G. Bennett, August, 1933. (PB33 106052)
- 181 Quantitative and Spatial Distribution of Winter Precipitation Along Utah's Wasatch Front. Lawrence E. Dunn, August, 1933. (PB33 106912)
- 182 500 Millibar Sign Frequency Teleconnection Charts - Winter. Lawrence E. Dunn, December, 1933. (PB33 111367)
- 183 500 Millibar Sign Frequency Teleconnection Charts - Spring. Lawrence E. Dunn, January, 1934. (PB33 111367)
- 184 Collection and Use of Lightning Strike Data in the Western U.S. During Summer 1933. Glenn Rasch and Mark Mathewson, February, 1934. (PB33 110474)
- 185 500 Millibar Sign Frequency Teleconnection Charts - Summer. Lawrence E. Dunn, March 1934. (PB33 111356)
- 186 Annual Data and Verification Tabulation Eastern North Pacific Tropical Storms and Hurricanes 1933. E. B. Gunther, March 1934. (PB33 106935)
- 187 500 Millibar Sign Frequency Teleconnection Charts - Fall. Lawrence E. Dunn, May 1934. (PB33 110930)
- 188 The Use and Interpretation of Isentropic Analyses. Jeffrey L. Anderson, October 1934. (PB33 152694)
- 189 Annual Data & Verification Tabulation Eastern North Pacific Tropical Storms and Hurricanes 1934. E. B. Gunther and R. L. Cross, April 1935. (PB35 107887AS)

NOAA SCIENTIFIC AND TECHNICAL PUBLICATIONS

The National Oceanic and Atmospheric Administration was established as part of the Department of Commerce on October 3, 1970. The mission responsibilities of NOAA are to assess the socioeconomic impact of natural and technological changes in the environment and to monitor and predict the state of the solid Earth, the oceans and their living resources, the atmosphere, and the space environment of the Earth.

The major components of NOAA regularly produce various types of scientific and technical information in the following kinds of publications:

PROFESSIONAL PAPERS — Important definitive research results, major techniques, and special investigations.

CONTRACT AND GRANT REPORTS — Reports prepared by contractors or grantees under NOAA sponsorship.

ATLAS — Presentation of analyzed data generally in the form of maps showing distribution of rainfall, chemical and physical conditions of oceans and atmosphere, distribution of fishes and marine mammals, ionospheric conditions, etc.

TECHNICAL SERVICE PUBLICATIONS — Reports containing data, observations, instructions, etc. A partial listing includes data serials; prediction and outlook periodicals; technical manuals, training papers, planning reports, and information serials; and miscellaneous technical publications.

TECHNICAL REPORTS — Journal quality with extensive details, mathematical developments, or data listings.

TECHNICAL MEMORANDUMS — Reports of preliminary, partial, or negative research or technology results, interim instructions, and the like.



Information on availability of NOAA publications can be obtained from:

**ENVIRONMENTAL SCIENCE INFORMATION CENTER (D822)
ENVIRONMENTAL DATA AND INFORMATION SERVICE
NATIONAL OCEANIC AND ATMOSPHERIC ADMINISTRATION
U.S. DEPARTMENT OF COMMERCE**

**6009 Executive Boulevard
Rockville, MD 20852**