



NOAA - National Weather Service

Tampa Bay Area

2525 14th Avenue SE, Ruskin, Florida 33570

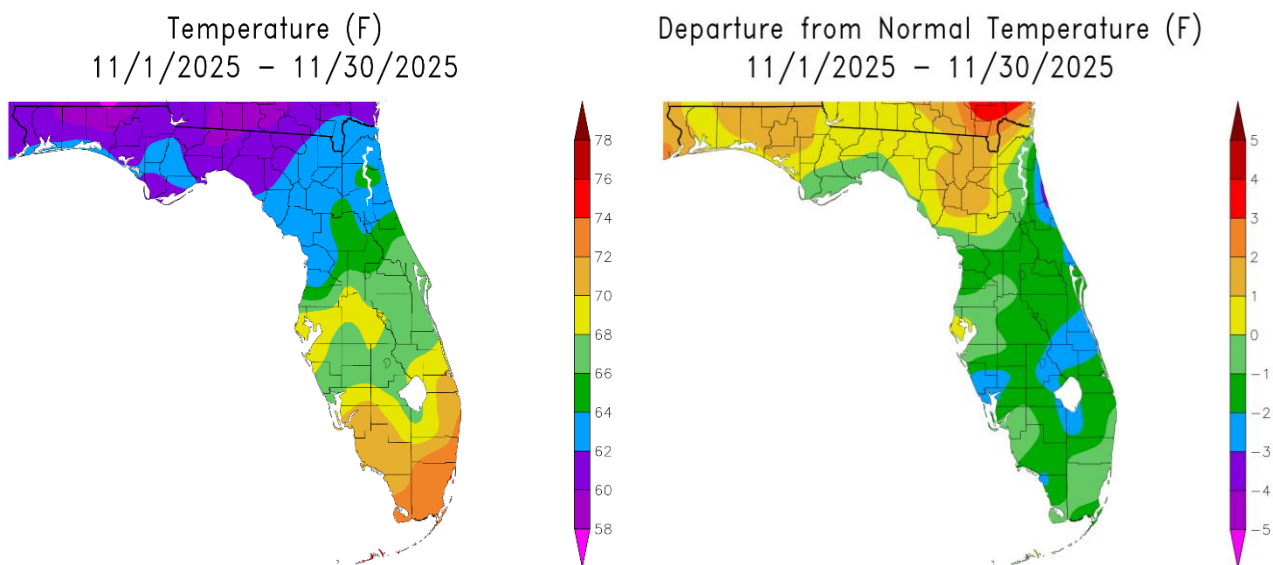
813-645-2323 <https://weather.gov/tampabay>

November and Autumn (Sep/Oct/Nov) 2025 Weather Summary

November temperatures started out near normal then for a few days during the second week fell well below normal with several new record lows being set and some record low maximums. Following this cold spell, we saw a stretch of near normal temperatures overall. However, during this stretch of near normal temperatures the lows were actually below normal on several days while the highs were a few degrees above normal. Overall, for the month temperatures averaged near to a few degrees below normal.

NOVEMBER TEMPERATURE (°F) :

Location	November 2025		Normal Nov Temp	Dep fm Normal	Records Began
	Rank	Avg Temp			
St Petersburg Area	24th Warmest(tie)	71.7°	70.6°	+1.1°	Aug 1914
Fort Myers Area	68th Coolest(tie)	70.8°	71.5°	-0.7°	Jan 1902
Tampa Area	32nd Warmest(tie)	69.9°	69.8°	+0.1°	Apr 1890
Sarasota-Bradenton Area	68th Coolest(tie)	69.6°	70.1°	-0.5°	Jan 1911
Plant City	78th Coolest(tie)	68.5°	69.4°	-1.4°	Sep 1892
Winter Haven Area	30th Coolest(tie)	68.2°	69.8°	-1.6°	Mar 1941
Punta Gorda Area	29th Coolest	68.1°	70.2°	-2.1°	May 1914
Lakeland Area	68th Coolest(tie)	68.0°	69.2°	-1.2°	Jan 1915
Venice	15th Coolest(tie)	67.4°	69.9°	-2.5°	May 1955
St. Leo	60th Coolest(tie)	66.4°	66.8°	-0.4°	Apr 1895
Myakka River St Pk	15th Coolest	66.4°	69.1°	-2.7°	Mar 1956
Archbold Bio Stn	10th Coolest(tie)	66.3°	68.9°	-2.6°	Jan 1969
Tarpon Springs	49th Coolest	66.2°	67.5°	-1.3°	Jan 1892
Bartow	31st Coolest(tie)	66.0°	68.3°	-2.3°	Jun 1892
Wauchula	18th Coolest	65.2°	67.8°	-2.6°	Jan 1933
Brooksville Area	91st Coolest(tie)	64.0°	65.1°	-1.1°	Jan 1892
Inverness 3 SE	12th Coolest(tie)	62.3°	64.3°	-2.0°	Jul 1948
Chiefland 5 ESE	9th Coolest(tie)	59.7°	62.7°	-3.0°	Jul 1956



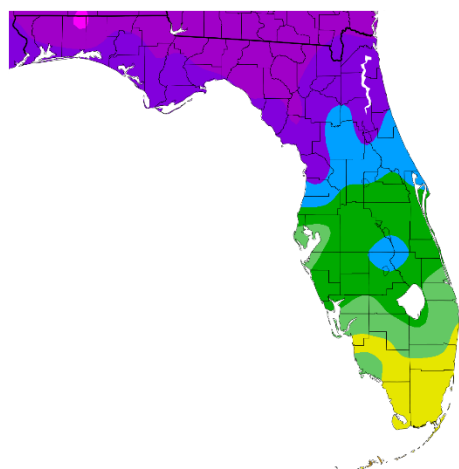
Graphics Source: High Plains Regional Climate Center (HPRCC)

As for Autumn, we had temperatures near normal in September, near normal to about 1 degree above normal in October, and about near normal to 3 degrees below normal in November. Overall, for Autumn temperatures averaged slightly above to slightly below normal.

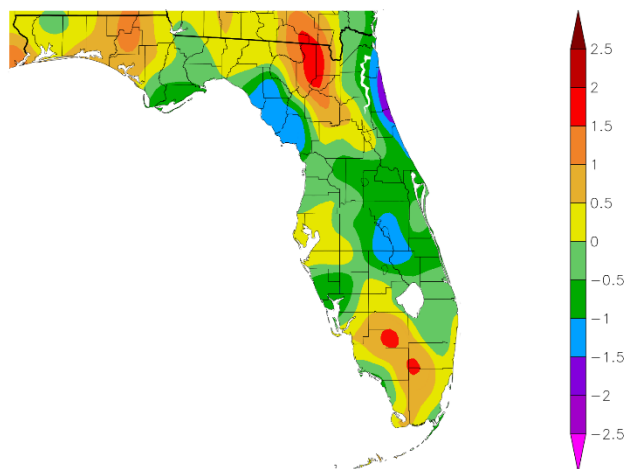
AUTUMN (SEPTEMBER/OCTOBER/NOVEMBER) TEMPERATURE (°F) :

Location	Autumn 2025 Rank	Avg Temp	Normal Aut Temp	Dep fm Normal	Records Began
Fort Myers Area	34th Warmest (tie)	77.4°	77.2°	+0.2°	Jan 1902
Tampa Area	13th Warmest (tie)	77.2°	76.6°	+0.6°	Apr 1890
St Petersburg Area	29th Warmest (tie)	77.2°	77.0°	+0.2°	Aug 1914
Sarasota-Bradenton Area	16th Warmest (tie)	76.6°	76.5°	+0.1°	Jan 1911
Plant City	97th Coolest (tie)	75.9°	76.1°	-0.2°	Sep 1892
Punta Gorda Area	38th Coolest (tie)	75.6°	76.5°	-0.9°	May 1914
Winter Haven Area	38th Coolest (tie)	75.6°	76.4	-0.8°	Jan 1941
Lakeland Area	80th Coolest	75.5°	75.7°	-0.2°	Jan 1915
Venice	24th Coolest	75.1°	76.0°	-0.9°	May 1955
Myakka River St Pk	19th Coolest	74.7°	75.6°	-0.9°	Mar 1956
Archbold Bio Stn	24th Coolest (tie)	74.5°	75.1°	-0.6°	Jan 1969
Bartow	39th Coolest (tie)	74.3°	74.8°	-0.5°	Jun 1892
Tarpon Springs	65th Coolest (tie)	74.2°	74.8°	-0.6°	Jan 1892
Wauchula	29th Coolest (tie)	74.0°	74.6°	-0.6°	Jan 1933
St. Leo	60th Coolest (tie)	73.4°	73.6°	-0.2°	Apr 1895
Brooksville Area	33rd Warmest (tie)	72.6°	72.7°	-0.1°	Jan 1892
Inverness 3 SE	11th Coolest (tie)	71.6°	71.9°	-0.3°	Jul 1948
Chiefland 5 ESE	10th Coolest (tie)	69.6°	70.9°	-1.3°	Jul 1956

Temperature (F)
9/1/2025 – 11/30/2025



Departure from Normal Temperature (F)
9/1/2025 – 11/30/2025

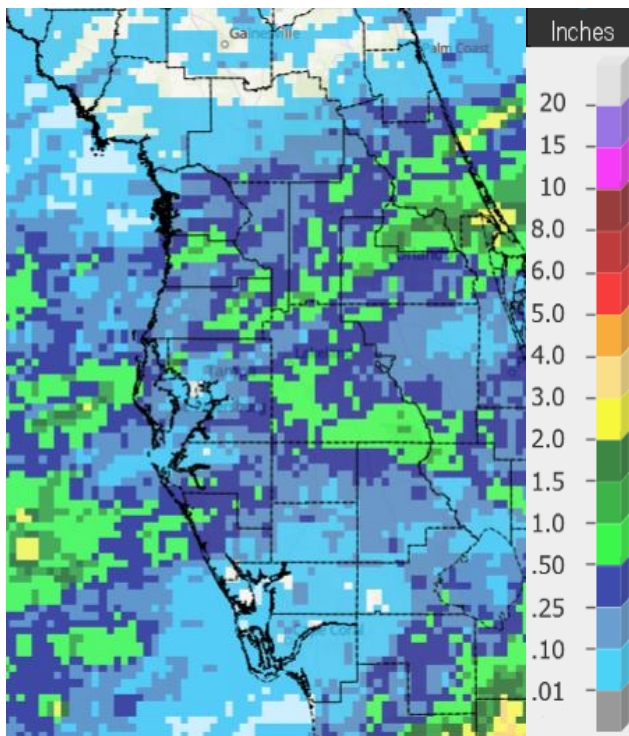


Graphics Source: High Plains Regional Climate Center (HPRCC)

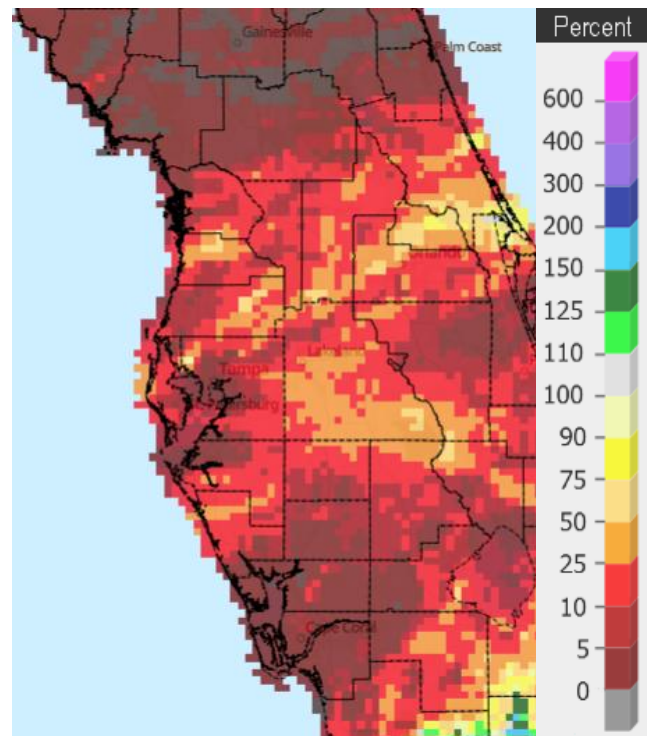
Looking at rainfall, it was a dry November, which is not that unusual, but so dry that many areas ended up in the Top Ten Driest for November.

NOVEMBER RAINFALL (inches):

Location	Rank	November 2025 Rain Total	Normal Nov Rain	Dep fm Normal	Records Began
Bartow	37th Driest	0.72	1.49	-0.77	Jun 1892
St. Leo	31st Driest (tie)	0.61	1.86	-1.25	Apr 1895
Winter Haven Area	19th Driest (tie)	0.57	1.45	-0.88	Jan 1941
Sarasota-Bradenton Area	24th Driest	0.48	1.81	-1.33	Jan 1911
Lakeland Area	25th Driest	0.39	1.93	-1.54	Jan 1915
Wauchula	17th Driest	0.37	1.96	-1.59	Jan 1933
Venice	9th Driest (tie)	0.32	1.54	-1.22	May 1955
Plant City	17th Driest (tie)	0.27	1.76	-1.49	Sep 1892
Inverness 3 SE	6th Driest	0.16	1.83	-1.67	Jul 1948
St. Petersburg Area	9th Driest (tie)	0.15	1.46	-1.31	Aug 1914
Tarpon Springs	11th Driest	0.14	1.90	-1.76	Jan 1892
Myakka River St Pk	5th Driest	0.13	2.02	-1.89	Sep 1943
Brooksville Area	6th Driest	0.10	1.59	-1.49	Jan 1892
Tampa Area	6th Driest	0.07	1.40	-1.33	Apr 1890
Chiefland 5 ESE	2nd Driest	0.05	2.22	-2.17	Jul 1956
Archbold Bio Stn	3rd Driest	0.04	1.74	-1.70	Jan 1969
Punta Gorda Area	2nd Driest	Trace	2.12	-2.12	May 1914
Fort Myers Area	1st Driest (tie)	Trace	1.78	-1.78	Jan 1902



Rainfall November 2025

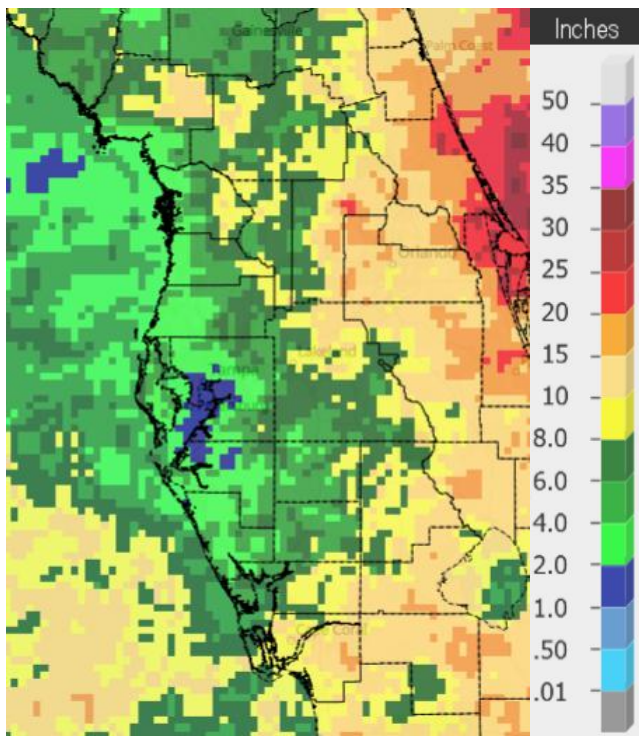


Percent of Normal

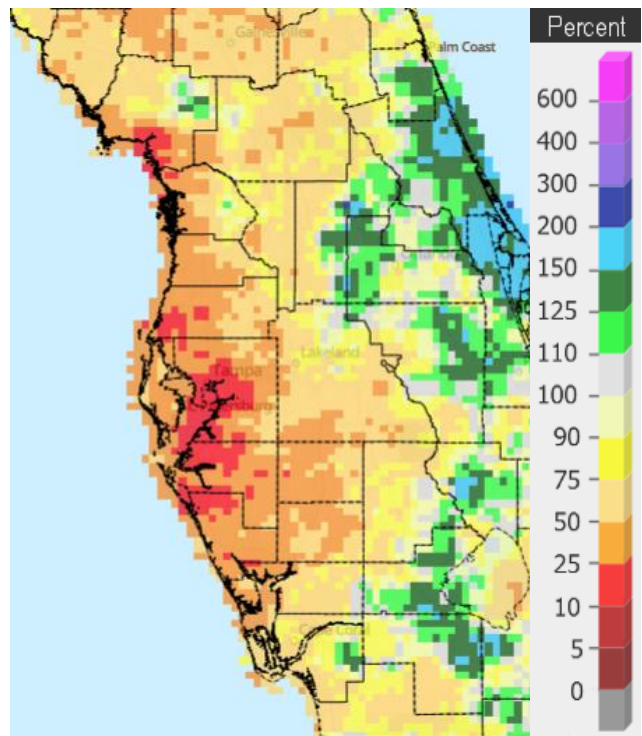
As for rainfall during Autumn it was also much below normal in many areas with a few locations ending up as the Driest Autumn on record, and some others in the Top 10 Driest.

AUTUMN (SEPTEMBER/OCTOBER/NOVEMBER) RAINFALL (inches):

Location	Rank	Autumn 2025 Rain Total	Normal Aut Rain	Dep fm Normal	Records Began
Fort Myers Area	27th Driest	9.04	13.86	-4.82	Jan 1902
Chiefland 5 ESE	17th Driest	8.46	11.21	-2.75	Jul 1956
Plant City	29th Driest(tie)	8.37	11.33	-2.96	Sep 1892
St. Leo	28th Driest	8.08	11.55	-3.47	Apr 1895
Archbold Bio Stn	12th Driest	7.53	12.32	-4.79	Jan 1969
Inverness 3 SE	15th Driest(tie)	7.37	10.56	-3.19	Jul 1948
Punta Gorda Area	11th Driest	6.83	12.01	-5.18	May 1914
Wauchula	10th Driest	6.54	11.37	-4.83	Jan 1933
Bartow	10th Driest	5.88	11.83	-5.95	Jun 1892
Winter Haven Area	7th Driest	5.33	8.98	-3.65	Jan 1941
Lakeland Area	10th Driest	5.14	12.59	-7.45	Jan 1915
Brooksville Area	2nd Driest	3.41	10.17	-6.76	Jan 1892
Venice	2nd Driest	3.20	12.05	-8.85	May 1955
Sarasota-Bradenton Area	1st Driest	3.04	10.57	-7.53	Jan 1911
St. Petersburg Area	2nd Driest	2.95	10.28	-7.33	Aug 1914
Myakka River St Pk	1st Driest	2.57	13.66	-11.09	Sep 1943
Tarpon Springs	2nd Driest	2.23	12.12	-9.89	Jan 1892
Tampa Area	1st Driest	1.16	9.83	-8.67	Apr 1890



Rainfall Autumn 2025



Percent of Normal

On the following pages are tables of the Top Ten Warmest, Coolest, Wettest, and Driest Novembers and Autumns at some official NWS locations, which include the average/total for this November and Autumn where available, and the 1991-2020 Normal (average) temperature and rainfall for November and Autumn.

CHIEFLAND 5 SE (records began in July 1956):

Warmest Novembers		Coolest Novembers		Wettest Novembers		Driest Novembers	
1	69.4 in 1985	1	56.6 in 1976	1	7.52 in 1972	1	Trace in 1978
2	69.2 in 1998	2	56.7 in 2008	2	6.47 in 1997	2	0.05 in 2025
3	68.9 in 1986	3	57.3 in 1970	3	6.02 in 1987	3	0.15 in 2012
4	68.6 in 1994	4	58.2 in 1962	4	5.94 in 2002	4	0.25 in 2016
5	67.6 in 2024	5	58.3 in 1968	5	5.25 in 1958	5	0.33 in 1956
6	67.5 in 1982	6	59.2 in 1969	6	4.95 in 1983	6	0.35 in 1970
7	66.9 in 2022	7	59.3 in 2021	7	4.80 in 1963	7	0.46 in 2024
	66.9 in 2020	8	59.4 in 2014	8	4.73 in 2013	8	0.48 in 1998
	66.9 in 1973	9	59.7 in 2025	9	4.55 in 1981	9	0.61 in 1990
10	66.5 in 1958		59.7 in 1984	10	4.50 in 1986	10	0.62 in 1991

Normal Temperature for November at CHIF1 = 62.7°

Normal Rainfall for November at CHIF1 = 2.22 inches

Warmest Autumns		Coolest Autumns		Wettest Autumns		Driest Autumns	
1	75.2 in 2018	1	67.1 in 1976	1	26.52 in 2004	1	2.05 in 1978
2	74.9 in 2020	2	67.9 in 2008	2	24.26 in 1983	2	3.83 in 2008
	74.9 in 1998	3	68.7 in 2006	3	20.54 in 1964	3	4.20 in 1961
4	74.2 in 1986	4	68.8 in 1968	4	18.65 in 1959	4	5.13 in 2010
5	73.9 in 1985	5	68.9 in 2000	5	17.59 in 1985	5	5.37 in 1970
6	73.7 in 1959	6	69.1 in 1963	6	16.94 in 1998	6	5.38 in 2003
7	73.4 in 2024		69.1 in 1969	7	16.38 in 1997	7	6.11 in 2022
	73.4 in 2019	8	69.3 in 1956	8	15.91 in 1960	8	6.24 in 1991
9	73.0 in 1973		69.3 in 1962	9	15.67 in 2002	9	6.61 in 1974
10	72.9 in 2016	10	69.6 in 2025	10	15.26 in 2017	10	6.65 in 2005
			69.6 in 2010			...	
						17	8.46 in 2025

Normal Temperature for Autumn at CHIF1 = 70.9°

Normal Rainfall for Autumn at CHIF1 = 11.21 inches

INVERNESS 3 SE (records began in July 1948):

Warmest Novembers		Coolest Novembers		Wettest Novembers		Driest Novembers	
1	73.1 in 2015	1	59.0 in 1991	1	7.73 in 1980	1	0.00 in 2004
2	71.0 in 2020	2	59.5 in 1976	2	6.40 in 1997		0.00 in 1978
3	70.3 in 1958	3	60.3 in 2002	3	6.21 in 1972	3	0.01 in 2016
4	69.7 in 2024	4	60.5 in 2014	4	5.48 in 1951	4	0.02 in 1950
	69.7 in 2022	5	60.6 in 1997	5	4.90 in 2015	5	0.07 in 2012
6	69.3 in 1978	6	61.0 in 1950	6	4.78 in 2014	6	0.16 in 2025
	69.3 in 1964	7	61.3 in 2012	7	4.69 in 1988	7	0.23 in 1993
8	68.8 in 1957	8	61.4 in 1995	8	4.35 in 2022	8	0.25 in 1967
9	68.6 in 1998	9	61.6 in 2000	9	3.77 in 2005	9	0.28 in 1956
10	68.5 in 1973	10	61.7 in 1949	10	3.70 in 2017	10	0.36 in 2001
	68.5 in 1960	11	61.8 in 1970				
		12	62.3 in 2025				
			62.3 in 2006				
			62.3 in 1954				

Normal Temperature for November at INVFl = 64.3°

Normal Rainfall for November at INVFl = 1.83 inches

Warmest Autumns		Coolest Autumns		Wettest Autumns		Driest Autumns	
1	76.8 in 2020	1	68.4 in 1976	1	21.53 in 2017	1	2.08 in 1967
2	76.1 in 2015	2	69.4 in 1997	2	21.34 in 1960	2	2.92 in 1978
3	75.5 in 2024	3	70.2 in 1991	3	21.07 in 1950	3	4.19 in 1961
4	75.1 in 1958	4	70.4 in 2006	4	19.73 in 2021	4	4.56 in 1974
5	75.0 in 2019	5	70.6 in 2000	5	19.55 in 1992	5	4.97 in 2010
6	74.9 in 1998	6	70.7 in 1987	6	19.27 in 1997	6	5.13 in 2003
	74.9 in 1960	7	70.8 in 2014	7	18.83 in 2004	7	5.37 in 1954
	74.9 in 1959	8	71.1 in 1956	8	17.75 in 2016	8	5.47 in 2012
9	74.2 in 1948	9	71.3 in 2002	9	17.32 in 2001	9	5.85 in 2000
10	74.1 in 2009	10	71.5 in 1996	10	16.51 in 1988	10	6.14 in 1996
	74.1 in 2007	11	71.6 in 2025			11	6.43 in 1984
			71.6 in 2001			12	6.80 in 2009
			71.6 in 1981			13	6.92 in 1998
						14	7.19 in 2023
						15	7.37 in 2025
							7.37 in 1990

Normal Temperature for Autumn at INVFl = 71.9°

Normal Rainfall for Autumn at INVFl = 10.56 inches

BROOKSVILLE AREA (records began in January 1892):

Warmest Novembers		Coolest Novembers		Wettest Novembers		Driest Novembers	
1	73.2 in 2015	1	57.5 in 1901	1	9.31 in 1916	1	0.00 in 1967
2	72.7 in 1948	2	60.3 in 2008	2	9.17 in 1987	2	Trace in 2016
3	72.6 in 1946	3	60.5 in 1892	3	8.30 in 1951		Trace in 1931
4	71.0 in 2020	4	60.8 in 2014	4	7.08 in 2014	4	0.01 in 1978
	71.0 in 1958	5	61.1 in 1923	5	6.64 in 1937	5	0.05 in 1928
6	70.7 in 1994	6	61.3 in 2000	6	6.56 in 1980	6	0.10 in 2025
7	70.5 in 1973	7	61.4 in 2012	7	6.28 in 1999	7	0.12 in 2001
	70.5 in 1896		61.4 in 1917	8	6.14 in 1972	8	0.15 in 1913
9	70.1 in 1905	9	61.8 in 2002	9	5.49 in 1932	9	0.18 in 1940
10	69.8 in 2022	10	61.9 in 1962	10	5.14 in 1988	10	0.22 in 1956
	69.8 in 1988				5.14 in 1920		0.22 in 1924
	69.8 in 1929						0.22 in 1900
...		...					
27	64.0 in 2025	91	64.0 in 2025				
	64.0 in 1939		64.0 in 1939				
	64.0 in 1893		64.0 in 1893				

Normal Temperature for November at BKV = 65.1°

Normal Rainfall for November at BKV = 1.59 inches

Warmest Autumns		Coolest Autumns		Wettest Autumns		Driest Autumns	
1	76.6 in 2020	1	69.3 in 1892	1	27.84 in 1950	1	2.30 in 1903
2	76.0 in 1911	2	69.5 in 1901	2	24.74 in 1912	2	3.41 in 2025
3	75.9 in 2015	3	70.2 in 1920	3	22.68 in 1894	3	3.58 in 2008
4	75.7 in 1905	4	70.3 in 2008	4	21.62 in 1947		3.58 in 1978
5	75.4 in 1941	5	70.4 in 1923	5	21.50 in 1922	5	3.87 in 1967
	75.4 in 1919	6	70.5 in 2000	6	21.46 in 1995	6	3.97 in 1909
	75.4 in 1915	7	70.8 in 2006	7	21.24 in 1921	7	4.10 in 2010
8	75.3 in 1946	8	70.9 in 2014	8	20.56 in 1938	8	4.58 in 1940
	75.3 in 1927		70.9 in 1894	9	20.36 in 1911	9	4.61 in 1991
10	75.2 in 2018	10	71.0 in 1953	10	19.88 in 1988	10	5.37 in 2015
	75.2 in 1973						
...		...					
70	72.6 in 2025	33	72.6 in 2025				
	72.6 in 2021		72.6 in 2021				
	72.6 in 2003		72.6 in 2003				
	72.6 in 1983		72.6 in 1983				

Normal Temperature for Autumn at BKV = 72.7°

Normal Rainfall for Autumn at BKV = 10.17 inches

ST LEO (records began in April 1895):

Warmest Novembers		Coolest Novembers		Wettest Novembers		Driest Novembers	
1	75.1 in 1986	1	60.8 in 1917	1	12.48 in 1988	1	Trace in 1960
2	73.6 in 1985	2	61.3 in 1901	2	8.34 in 1951	2	0.02 in 1978
3	73.2 in 1946	3	61.7 in 1910	3	7.36 in 1987	3	0.03 in 1931
4	73.1 in 1948	4	62.2 in 1930	4	7.21 in 2014		0.03 in 1928
5	72.0 in 1998	5	62.3 in 2014	5	6.72 in 2022	5	0.06 in 2016
6	71.8 in 2015	6	62.5 in 1923	6	6.22 in 1916	6	0.08 in 2012
	71.8 in 1994	7	62.6 in 1970	7	6.12 in 1963	7	0.18 in 2024
8	71.5 in 1982	8	62.8 in 1933	8	6.06 in 1972	8	0.21 in 1993
9	71.4 in 1958		62.8 in 1932	9	5.84 in 1911	9	0.22 in 1940
10	71.3 in 2020		62.8 in 1904	10	5.61 in 1918	10	0.23 in 1913
	71.3 in 1978					...	
...		...				31	0.61 in 2025
70	66.4 in 2025	60	66.4 in 2025				0.61 in 1909
	66.4 in 1940		66.4 in 1940				
	66.4 in 1935		66.4 in 1935				

Normal Temperature for November at STLFL = 66.8°

Normal Rainfall for November at STLFL = 1.86 inches

Warmest Autumns		Coolest Autumns		Wettest Autumns		Driest Autumns	
1	77.9 in 1985	1	69.8 in 1917	1	25.80 in 1988	1	1.52 in 1978
2	77.4 in 1986	2	70.1 in 1903	2	25.13 in 1912	2	3.19 in 1940
3	76.5 in 2020	3	70.2 in 1930	3	24.87 in 2024	3	3.56 in 2010
	76.5 in 1998	4	70.7 in 1920	4	24.60 in 1922	4	3.81 in 1909
5	76.4 in 2007	5	71.0 in 1976	5	22.73 in 1953	5	4.14 in 1967
6	76.2 in 1946		71.0 in 1923	6	21.77 in 1997	6	4.76 in 1991
7	76.1 in 2024	7	71.1 in 1910	7	21.48 in 1982	7	5.09 in 2008
	76.1 in 2009	8	71.4 in 1943	8	21.40 in 1950	8	5.11 in 2018
	76.1 in 1941	9	71.5 in 2014	9	21.29 in 1921	9	5.33 in 1931
10	75.9 in 2004	10	71.8 in 1956	10	20.71 in 1949	10	5.63 in 1961
			71.8 in 1922			...	
...		...				28	8.08 in 2025
69	73.4 in 2025	60	73.4 in 2025				
	73.4 in 2008		73.4 in 2008				

Normal Temperature for Autumn at STLFL = 73.6°

Normal Rainfall for Autumn at STLFL = 11.55 inches

TARPON SPRINGS (records began in January 1892):

Warmest Novembers		Coolest Novembers		Wettest Novembers		Driest Novembers	
1	75.9 in 1986	1	59.6 in 2004	1	9.13 in 1988	1	0.00 in 2016
2	74.4 in 1985	2	60.0 in 1901	2	8.18 in 1916	2	Trace in 1939
3	74.3 in 1946	3	61.5 in 1917	3	6.99 in 1997		Trace in 1931
4	73.5 in 2015	4	61.7 in 1962	4	6.63 in 1992	4	0.02 in 1978
5	72.6 in 1994		61.7 in 1892	5	6.09 in 2014	5	0.06 in 1933
6	72.3 in 2024	6	61.9 in 1910	6	5.80 in 1963	6	0.08 in 1942
	72.3 in 1998	7	62.5 in 1904	7	5.57 in 1920	7	0.09 in 1940
8	71.8 in 2003	8	62.6 in 2014	8	5.49 in 2020		0.09 in 1928
9	71.6 in 1896		62.6 in 1970	9	5.19 in 1955	9	0.10 in 1930
10	71.4 in 1982	10	63.0 in 1976	10	5.18 in 1896	10	0.13 in 1924
			63.0 in 1912			11	0.14 in 2025
...		...					
82	66.2 in 2025	49	66.2 in 2025				

Normal Temperature for November at TRPF1 = 67.5°

Normal Rainfall for November at TRPF1 = 1.90 inches

Warmest Autumns		Coolest Autumns		Wettest Autumns		Driest Autumns	
1	78.1 in 1985	1	70.8 in 1917	1	28.87 in 1911	1	1.85 in 2005
2	78.0 in 1986		70.8 in 1892	2	28.34 in 1988	2	2.23 in 2025
3	77.9 in 1919	3	71.4 in 1903	3	24.31 in 2014	3	3.33 in 1978
4	77.6 in 2018	4	71.5 in 1976	4	22.61 in 2024	4	3.44 in 1967
5	77.1 in 2024	5	71.7 in 1967	5	22.25 in 1997	5	4.03 in 2023
6	76.8 in 2020		71.7 in 1901	6	21.71 in 1983	6	4.62 in 2008
	76.8 in 1946	7	71.9 in 1963	7	21.70 in 1912	7	4.85 in 2010
8	76.7 in 2015		71.9 in 1962	8	21.43 in 1975	8	4.86 in 1927
	76.7 in 1994		71.9 in 1940	9	20.78 in 1995	9	5.57 in 1909
10	76.6 in 2019		71.9 in 1904		20.78 in 1959	10	5.74 in 1930
	76.6 in 1998		71.9 in 1899				
...		...					
62	74.2 in 2025	65	74.2 in 2025				
	74.2 in 2010		74.2 in 2010				
	74.2 in 1971		74.2 in 1971				
	74.2 in 1939		74.2 in 1939				
	74.2 in 1896		74.2 in 1896				

Normal Temperature for Autumn at TRPF1 = 74.8°

Normal Rainfall for Autumn at TRPF1 = 12.12 inches

TAMPA AREA (records began in April 1890):

Warmest Novembers		Coolest Novembers		Wettest Novembers		Driest Novembers	
1	76.3 in 1986	1	61.4 in 1901	1	6.12 in 1963	1	Trace in 1960
2	76.2 in 2015	2	61.9 in 1970	2	5.97 in 1988	2	0.01 in 2016
3	74.6 in 2020	3	62.3 in 1968	3	5.40 in 2020		0.01 in 1978
4	73.7 in 1946	4	62.5 in 1962	4	5.38 in 1944	4	0.04 in 1931
5	73.6 in 1948	5	62.8 in 1976	5	5.26 in 2014	5	0.05 in 1928
	73.6 in 1985	6	62.9 in 1969	6	5.18 in 2022	6	0.07 in 2025
7	73.0 in 2024		62.9 in 1917	7	4.89 in 1953	7	0.08 in 1927
8	72.7 in 1958	8	63.3 in 1910	8	4.85 in 1925	8	0.10 in 2001
9	72.6 in 2022	9	63.4 in 1923	9	4.75 in 1941		0.10 in 1942
10	72.5 in 1998	10	63.7 in 1949	10	4.36 in 1987	10	0.11 in 2007
...							
32	69.9 in 2025						
	69.9 in 1992						
	69.9 in 1922						
	69.9 in 1902						

Normal Temperature for November at TPA = 69.8°

Normal Rainfall for November at TPA = 1.40 inches

Warmest Autumns		Coolest Autumns		Wettest Autumns		Driest Autumns	
1	79.7 in 2020	1	71.0 in 1976	1	29.57 in 2024	1	1.16 in 2025
2	79.0 in 2015	2	71.6 in 1903	2	24.38 in 1894	2	3.19 in 2010
3	78.9 in 2018		71.6 in 1891	3	22.83 in 1912	3	3.30 in 1909
4	78.4 in 1986	4	71.7 in 1968	4	20.45 in 1997	4	3.62 in 1961
5	78.1 in 2024	5	71.8 in 1917	5	19.80 in 1922	5	4.06 in 1942
	78.1 in 2019		71.8 in 1901	6	19.62 in 1988	6	4.21 in 1940
7	77.9 in 2017	7	71.9 in 1923	7	19.07 in 1947	7	4.25 in 1913
8	77.8 in 1985	8	72.2 in 1892	8	18.57 in 2022	8	4.35 in 1974
9	77.7 in 2016	9	72.3 in 1962	9	18.15 in 1953	9	5.07 in 1967
10	77.5 in 1919	10	72.4 in 1956	10	17.60 in 1890	10	5.22 in 1984
11	77.3 in 2023		72.4 in 1910				
	77.3 in 2021						
13	77.2 in 2025						
	77.2 in 1998						

Normal Temperature for Autumn at TPA = 76.6°

Normal Rainfall for Autumn at TPA = 9.83 inches

ST PETERSBURG (records began in August 1914):

Warmest Novembers		Coolest Novembers		Wettest Novembers		Driest Novembers	
1	77.4 in 1986	1	63.9 in 1917	1	6.94 in 1988	1	0.00 in 1931
2	76.3 in 1985	2	64.3 in 1962	2	6.85 in 1953	2	0.02 in 1960
3	74.9 in 2015	3	64.7 in 1949	3	6.80 in 1987	3	0.03 in 2016
4	74.8 in 1946	4	65.1 in 1976	4	6.18 in 2020		0.03 in 1942
5	74.5 in 1948	5	65.2 in 1995	5	6.04 in 1963	5	0.04 in 2001
6	74.3 in 2020		65.2 in 1951	6	5.71 in 1916	6	0.10 in 1978
7	73.8 in 2005	7	65.3 in 1950	7	5.63 in 1925	7	0.12 in 1974
8	73.7 in 1978	8	65.4 in 1954	8	5.08 in 1954	8	0.14 in 1930
9	73.6 in 2024	9	65.7 in 1956	9	5.03 in 1968	9	0.15 in 2025
10	73.5 in 1958		65.7 in 1923	10	5.02 in 1915		0.15 in 1928
...							
24	71.7 in 2025						
	71.7 in 1931						

Normal Temperature for November at SPG = 70.6°

Normal Rainfall for November at SPG = 1.46 inches

Warmest Autumns		Coolest Autumns		Wettest Autumns		Driest Autumns	
1	80.0 in 1985	1	72.6 in 1917	1	32.75 in 1988	1	2.13 in 2010
2	79.9 in 1986	2	73.2 in 1956	2	30.04 in 1953	2	2.95 in 2025
3	79.8 in 2005	3	73.4 in 1952	3	26.31 in 1986	3	4.00 in 1990
4	79.3 in 2024	4	73.5 in 1954	4	26.30 in 1952	4	4.49 in 1967
	79.3 in 2020		73.5 in 1953	5	21.83 in 1997	5	4.69 in 2008
6	79.1 in 2015	6	73.6 in 1976	6	21.06 in 1922	6	4.84 in 1964
7	79.0 in 2018		73.6 in 1962	7	20.14 in 1954	7	5.01 in 1940
8	78.9 in 2019		73.6 in 1923	8	19.12 in 1918	8	5.52 in 1927
9	78.4 in 2013	9	73.7 in 1943	9	19.07 in 2001	9	5.61 in 1966
	78.4 in 1941	10	73.9 in 1950	10	18.52 in 1959	10	5.73 in 1965
...							
29	77.2 in 2025						
	77.2 in 2023						
	77.2 in 2003						
	77.2 in 1990						
	77.2 in 1915						

Normal Temperature for Autumn at SPG = 77.0°

Normal Rainfall for Autumn at SPG = 10.28 inches

PLANT CITY (records began in September 1892):

Warmest Novembers		Coolest Novembers		Wettest Novembers		Driest Novembers	
1	75.7 in 1986	1	61.8 in 1932	1	7.88 in 1953	1	0.00 in 1960
2	74.6 in 2015	2	62.0 in 1930	2	7.34 in 1988		0.00 in 1931
3	74.3 in 1948	3	62.1 in 1917	3	6.89 in 2020		0.00 in 1905
4	74.2 in 2020	4	62.4 in 1933	4	6.75 in 2014	4	0.01 in 2007
5	73.9 in 1946	5	62.6 in 1904	5	6.46 in 1963	5	0.05 in 2012
6	73.8 in 2022	6	62.9 in 1912	6	5.90 in 1918	6	0.10 in 1928
7	72.7 in 1985	7	63.1 in 2014	7	5.56 in 1971		0.10 in 1924
8	72.5 in 1896	8	63.3 in 1962	8	4.89 in 2022	8	0.13 in 1940
9	72.3 in 1994		63.3 in 1949	9	4.63 in 1980	9	0.15 in 2017
	72.3 in 1958	10	63.4 in 1926	10	4.52 in 1987		0.15 in 1978
...		
39	68.5 in 2025	78	68.5 in 2025			17	0.27 in 2025
	68.5 in 1987		68.5 in 1987				0.27 in 1923
	68.5 in 1977		68.5 in 1977				

Normal Temperature for November at PLCF1 = 69.4°

Normal Rainfall for November at PLCF1 = 1.76 inches

Warmest Autumns		Coolest Autumns		Wettest Autumns		Driest Autumns	
1	79.6 in 2020	1	70.4 in 1930	1	25.05 in 1947	1	1.89 in 1909
2	78.8 in 2024	2	70.8 in 1932	2	23.63 in 2024	2	1.99 in 1961
3	78.4 in 2018	3	71.2 in 1940	3	23.20 in 1894	3	3.56 in 1940
4	78.3 in 2019	4	71.5 in 2000	4	23.04 in 1988	4	4.08 in 1991
5	77.9 in 1986	5	71.6 in 1976	5	21.72 in 1953	5	4.29 in 1927
6	77.4 in 2015	6	71.7 in 1943	6	20.54 in 2020	6	4.41 in 1990
7	77.2 in 2022	7	72.0 in 1937	7	20.48 in 2022	7	4.55 in 2010
	77.2 in 1985		72.0 in 1909	8	20.36 in 2014	8	4.57 in 1939
9	76.8 in 2023	9	72.2 in 1968	9	20.15 in 2004	9	4.63 in 1967
10	76.4 in 1946	10	72.4 in 1926	10	20.06 in 1998	10	4.67 in 2008
11	76.2 in 2021	
12	76.0 in 2016	97	75.9 in 2025			29	8.37 in 2025
13	75.9 in 2025		75.9 in 1948				8.37 in 2015
	75.9 in 1948		75.9 in 1911				
	75.9 in 1911						

Normal Temperature for Autumn at PLCF1 = 76.1°

Normal Rainfall for Autumn at PLCF1 = 11.33 inches

LAKELAND AREA (records began in January 1915):

Warmest Novembers		Coolest Novembers		Wettest Novembers		Driest Novembers	
1	76.9 in 1986	1	62.6 in 1970	1	7.56 in 2014	1	0.00 in 1924
2	75.4 in 2015	2	62.9 in 1962	2	7.19 in 1988	2	Trace in 2016
3	73.4 in 1985	3	63.0 in 1969	3	6.08 in 1987		Trace in 1960
4	73.3 in 1994	4	63.4 in 1949	4	5.94 in 1941		Trace in 1917
	73.3 in 1948	5	63.5 in 1976	5	5.80 in 2020	5	0.03 in 1931
6	73.1 in 1946		63.5 in 1951	6	5.71 in 1963	6	0.05 in 1928
7	73.0 in 2020		63.5 in 1950	7	5.54 in 1980	7	0.07 in 1950
8	72.6 in 2022	8	63.7 in 1968	8	5.37 in 1953	8	0.08 in 2012
9	71.9 in 2024	9	63.9 in 2008	9	4.59 in 2018	9	0.10 in 1991
10	71.6 in 2003	10	64.0 in 1923	10	4.48 in 1997	10	0.11 in 1940
	71.6 in 1988					...	
...		...				25	0.39 in 2025
53	68.0 in 2025	56	68.0 in 2025				
	68.0 in 2010		68.0 in 2010				
	68.0 in 1999		68.0 in 1999				

Normal Temperature for November at LLDF1 = 69.2°

Normal Rainfall for November at LLDF1 = 1.93 inches

Warmest Autumns		Coolest Autumns		Wettest Autumns		Driest Autumns	
1	79.2 in 1986	1	71.5 in 1976	1	31.68 in 2024	1	2.99 in 1961
2	78.6 in 2020	2	72.1 in 1943	2	22.45 in 2014	2	3.21 in 1940
3	78.3 in 2015	3	72.2 in 1923	3	21.46 in 2004	3	4.16 in 1942
4	78.1 in 1985	4	72.3 in 2006	4	19.78 in 1947	4	4.25 in 1927
5	78.0 in 2018		72.3 in 1968	5	19.52 in 1918	5	4.28 in 1934
6	77.5 in 2024		72.3 in 1956	6	18.91 in 2022	6	4.58 in 2010
7	77.4 in 2019	7	72.4 in 1967	7	18.47 in 1998	7	4.69 in 2008
8	77.0 in 1994	8	72.5 in 1940	8	18.39 in 1929	8	5.01 in 1967
9	76.8 in 2009	9	72.6 in 1954	9	18.29 in 1953	9	5.12 in 1978
10	76.7 in 1990	10	72.7 in 1962	10	17.36 in 1997	10	5.14 in 2025
			72.7 in 1953				
			72.7 in 1924				
...		...					
31	75.5 in 2025	80	75.5 in 2025				

Normal Temperature for Autumn at LLDF1 = 75.7°

Normal Rainfall for Autumn at LLDF1 = 12.59 inches

WINTER HAVEN AREA (records began in January 1941):

Warmest Novembers		Coolest Novembers		Wettest Novembers		Driest Novembers	
1	76.8 in 1986	1	63.1 in 1962	1	7.81 in 1988	1	0.00 in 1960
2	75.6 in 1948	2	63.2 in 1970	2	7.13 in 1987		0.00 in 1950
3	75.1 in 2015	3	63.9 in 2008	3	6.76 in 1953	3	Trace in 2011
4	74.9 in 1985		63.9 in 1968	4	6.27 in 1963	4	0.01 in 2012
5	74.5 in 1946	5	64.1 in 1976	5	5.32 in 1994	5	0.07 in 2016
6	73.8 in 2024	6	64.5 in 1949	6	5.21 in 1980	6	0.13 in 1966
7	73.5 in 2020	7	64.6 in 1969	7	4.94 in 1951	7	0.16 in 1942
8	73.1 in 1994	8	64.7 in 1981	8	4.07 in 1995	8	0.19 in 1985
9	72.6 in 1988	9	64.9 in 1950	9	4.00 in 2020	9	0.20 in 2017
10	72.5 in 2022	10	65.0 in 2012	10	3.97 in 1968		0.20 in 1991
			65.0 in 1951				0.20 in 1967
...		
45	68.2 in 2025	30	68.2 in 2025			19	0.57 in 2025
	68.2 in 2007		68.2 in 2007				0.57 in 2003
	68.2 in 1996		68.2 in 1997				

Normal Temperature for November at GIF = 69.8°

Normal Rainfall for November at GIF = 1.45 inches

Warmest Autumns		Coolest Autumns		Wettest Autumns		Driest Autumns	
1	79.2 in 2020	1	71.8 in 1976	1	21.86 in 1987	1	2.72 in 1961
2	79.1 in 2018	2	72.2 in 1968	2	20.61 in 1947	2	3.11 in 2009
3	79.0 in 1986	3	72.5 in 1962	3	20.57 in 1953	3	4.27 in 1967
4	78.7 in 2019	4	73.0 in 1963	4	20.35 in 1960	4	4.29 in 2008
5	78.6 in 2024	5	73.2 in 2006	5	18.82 in 1959	5	4.91 in 1985
6	78.4 in 1985	6	73.3 in 2008	6	18.11 in 1950	6	5.14 in 1942
7	78.0 in 2015		73.3 in 1981	7	17.84 in 2014	7	5.33 in 2025
8	77.2 in 1998		73.3 in 1953	8	17.59 in 2001	8	5.44 in 1978
	77.2 in 1989	9	73.4 in 1943	9	17.16 in 1988	9	5.54 in 2006
	77.2 in 1946	10	73.5 in 2000	10	16.36 in 2020	10	5.78 in 1990
	77.2 in 1941						
...		...					
30	75.6 in 2025	38	75.6 in 2025				
	75.6 in 2010		75.6 in 2010				
	75.6 in 1958		75.6 in 1958				

Normal Temperature for Autumn at GIF = 76.4°

Normal Rainfall for Autumn at GIF = 8.98 inches

BARTOW (records began in June 1892):

Warmest Novembers		Coolest Novembers		Wettest Novembers		Driest Novembers	
1	76.4 in 1986	1	60.9 in 1917	1	7.40 in 1987	1	0.00 in 2016
2	75.3 in 2015	2	61.5 in 1970	2	7.36 in 2002		0.00 in 1960
3	74.5 in 1948	3	62.0 in 1910	3	6.52 in 1963	3	0.02 in 1931
4	73.6 in 2013	4	62.3 in 1901	4	6.33 in 1988	4	0.04 in 1966
	73.6 in 1985	5	62.6 in 1904	5	5.97 in 1953		0.04 in 1928
6	73.5 in 1946		62.6 in 1892	6	5.80 in 1951	6	0.05 in 2012
7	73.0 in 1994	7	62.9 in 1962	7	5.18 in 2022	7	0.06 in 1950
8	72.9 in 1958	8	63.5 in 2008	8	4.75 in 1911	8	0.09 in 1923
9	72.5 in 2020		63.5 in 1912	9	4.71 in 1937	9	0.10 in 2007
	72.5 in 1998	10	63.6 in 1939	10	4.68 in 2015		0.10 in 1974
...		
73	66.0 in 2025	31	66.0 in 2025	98	0.72 in 2025	37	0.72 in 2025
	66.0 in 2021		66.0 in 2021				

Normal Temperature for November at BARF1 = 68.3°

Normal Rainfall for November at BARF1 = 1.49 inches

Warmest Autumns		Coolest Autumns		Wettest Autumns		Driest Autumns	
1	77.8 in 2020	1	71.0 in 1894	1	31.36 in 2022	1	3.71 in 1942
	77.8 in 2015	2	71.1 in 1892	2	26.99 in 1894	2	4.88 in 2010
3	77.2 in 1998	3	71.4 in 1917	3	21.30 in 1947	3	5.00 in 1940
4	77.1 in 2018	4	71.8 in 1976	4	20.97 in 1917	4	5.02 in 1990
5	76.8 in 2009	5	72.1 in 1895	5	20.77 in 1922	5	5.25 in 1961
	76.8 in 1946	6	72.3 in 1914	6	20.38 in 1959	6	5.26 in 1939
7	76.7 in 2024	7	72.4 in 1970	7	20.31 in 1982	7	5.29 in 1984
8	76.6 in 1919	8	72.5 in 1904	8	19.77 in 1953	8	5.47 in 1974
9	76.5 in 2019	9	72.8 in 1967	9	19.43 in 1902	9	5.57 in 1906
10	76.4 in 1994		72.8 in 1963	10	19.30 in 1960	10	5.88 in 2025
	76.4 in 1958		72.8 in 1935				
...		...					
57	74.3 in 2025	39	74.3 in 2025				
	74.3 in 1966		74.3 in 1966				

Normal Temperature for Autumn at BARF1 = 74.8°

Normal Rainfall for Autumn at BARF1 = 11.83 inches

SARASOTA-BRADENTON AREA (records began in January 1911):

Warmest Novembers		Coolest Novembers		Wettest Novembers		Driest Novembers	
1	76.1 in 1986	1	63.2 in 1917	1	9.40 in 1997	1	0.00 in 1931
2	75.4 in 2015	2	63.5 in 1949	2	7.62 in 2020	2	Trace in 1940
3	74.7 in 2020		63.5 in 1923	3	6.81 in 1920		Trace in 1928
4	73.2 in 1948	4	64.2 in 1976	4	6.24 in 1925	4	0.02 in 2016
5	73.1 in 2022	5	64.5 in 2008	5	5.68 in 1953	5	0.06 in 2001
	73.1 in 1958	6	64.6 in 2014	6	5.18 in 1941		0.06 in 1991
7	72.8 in 2024		64.6 in 1981	7	5.15 in 1988	7	0.09 in 1930
8	72.7 in 1994	8	64.7 in 1968	8	4.94 in 1918	8	0.13 in 2024
9	72.4 in 1985	9	64.8 in 1933	9	4.69 in 2002	9	0.16 in 2007
10	72.2 in 2013	10	65.0 in 1962	10	4.55 in 1972	10	0.20 in 1945
...		
43	69.6 in 2025	68	69.6 in 2025			24	0.48 in 2025
	69.6 in 1942		69.6 in 1942				

Normal Temperature for November at SRQ = 70.1°

Normal Rainfall for November at SRQ = 1.81 inches

Warmest Autumns		Coolest Autumns		Wettest Autumns		Driest Autumns	
1	79.7 in 2020	1	71.3 in 1976	1	28.46 in 1953	1	3.04 in 2025
	79.7 in 2019	2	72.2 in 1930	2	25.64 in 1962	2	3.25 in 2023
3	78.3 in 2016	3	72.3 in 1943	3	23.66 in 1922	3	3.64 in 2010
4	78.2 in 1986	4	72.5 in 1940	4	23.12 in 1997	4	4.01 in 1991
5	78.0 in 2015	5	72.7 in 1923	5	22.26 in 1912	5	5.08 in 1942
6	77.8 in 2018	6	73.0 in 1981	6	22.01 in 1952	6	5.44 in 1974
7	77.6 in 2024		73.0 in 1944	7	21.30 in 1988	7	5.61 in 2012
8	77.3 in 2007		73.0 in 1937	8	20.43 in 1928	8	5.90 in 2019
9	77.2 in 2023	9	73.1 in 1968	9	20.29 in 1957	9	5.95 in 1945
10	77.1 in 1998		73.1 in 1956	10	19.80 in 1960	10	6.05 in 1944
	77.1 in 1990						
12	77.0 in 2013						
13	76.9 in 1985						
14	76.8 in 2005						
15	76.7 in 1994						
16	76.6 in 2025						
	76.6 in 2009						

Normal Temperature for Autumn at SRQ = 76.5°

Normal Rainfall for Autumn at SRQ = 10.57 inches

VENICE (records began in May 1955):

Warmest Novembers		Coolest Novembers		Wettest Novembers		Driest Novembers	
1	75.8 in 2015	1	64.2 in 2008	1	7.65 in 1997	1	0.00 in 1991
2	74.1 in 1985	2	64.7 in 1962	2	6.02 in 2020	2	0.02 in 2007
3	73.9 in 2022	3	64.9 in 1981	3	5.85 in 1972	3	0.04 in 2001
4	73.6 in 1998		64.9 in 1970	4	5.56 in 1983	4	0.06 in 2016
	73.6 in 1994	5	65.1 in 1956	5	5.55 in 1963	5	0.15 in 1960
6	73.5 in 2020	6	65.2 in 1976	6	4.77 in 1957	6	0.20 in 1993
7	72.8 in 2024	7	65.4 in 1968	7	4.46 in 1980	7	0.30 in 1956
8	72.5 in 2013	8	65.8 in 2014	8	4.14 in 1998	8	0.31 in 1978
9	72.3 in 2003	9	66.0 in 1969	9	3.77 in 1968	9	0.32 in 2025
10	72.2 in 1978	10	66.8 in 2021	10	3.72 in 2014		0.32 in 2012
			66.8 in 1966				0.32 in 2003
		12	66.9 in 2006				
		13	67.3 in 2002				
			67.3 in 1995				
		15	67.4 in 2025				
			67.9 in 2000				

Normal Temperature for November at VNCF1 = 69.9°

Normal Rainfall for November at VNCF1 = 1.54 inches

Warmest Autumns		Coolest Autumns		Wettest Autumns		Driest Autumns	
1	78.9 in 2009	1	71.8 in 1976	1	26.44 in 1983	1	3.04 in 1961
2	78.5 in 1998	2	72.1 in 1968	2	25.83 in 1995	2	3.20 in 2025
3	78.4 in 2015	3	72.8 in 2008	3	25.14 in 2022	3	3.63 in 1981
4	78.3 in 2024		72.8 in 1956	4	21.38 in 1997	4	5.24 in 1978
5	78.0 in 2020	5	73.6 in 1974	5	20.89 in 1960	5	5.68 in 2023
6	77.8 in 2018	6	73.7 in 1987	6	20.27 in 1968	6	5.81 in 2010
	77.8 in 2013		73.7 in 1981	7	19.23 in 1959	7	6.18 in 1964
	77.8 in 1985		73.7 in 1962	8	18.86 in 1982	8	6.59 in 1984
9	77.6 in 2010	9	73.9 in 1977	9	18.67 in 2014	9	7.16 in 1990
10	77.3 in 1994	10	74.0 in 2006	10	18.33 in 1957	10	7.38 in 2011
...		...					
37	75.1 in 2025	24	75.1 in 2025				

Normal Temperature for Autumn at VNCF1 = 76.0°

Normal Rainfall for Autumn at VNCF1 = 12.05 inches

MYAKKA RIVER STATE PARK (Temperature records began in March 1956
and Rainfall records began in Sep 1943):

Warmest Novembers	Coollest Novembers	Wettest Novembers	Driest Novembers
1 75.8 in 2015	1 62.1 in 1962	1 10.19 in 1997	1 0.00 in 2001
2 75.6 in 1986	2 62.4 in 1969	2 5.55 in 2022	2 0.02 in 1950
3 73.4 in 1998	3 62.8 in 1970	3 5.13 in 1953	3 0.03 in 1991
4 73.2 in 1985	4 63.2 in 1968	4 5.04 in 1947	4 0.07 in 2016
5 72.8 in 2020	5 64.1 in 2008	5 5.01 in 1972	5 0.13 in 2025
6 72.7 in 1958	6 65.3 in 2000	6 4.87 in 1981	6 0.19 in 2012
7 72.3 in 2022	7 65.4 in 2012	7 4.76 in 2020	7 0.20 in 1944
72.3 in 1982	65.4 in 1963	8 4.73 in 1958	8 0.27 in 2024
9 72.1 in 2013	9 65.6 in 2021	9 4.52 in 1963	9 0.30 in 1996
72.1 in 1978	10 65.8 in 1976	10 4.45 in 2002	0.30 in 1993
	11 65.9 in 2002		0.30 in 1965
	12 66.2 in 2014		
	66.2 in 1995		
	66.2 in 1981		
	15 66.4 in 2025		

Normal Temperature for November at MKCF1 = 69.1°
Normal Rainfall for November at MKCF1 = 2.02 inches

Warmest Autumns	Coollest Autumns	Wettest Autumns	Driest Autumns
1 78.5 in 2015	1 71.7 in 1962	1 37.20 in 2022*	1 2.57 in 2025
2 78.3 in 1998	2 72.6 in 1968	2 25.70 in 1962	2 4.57 in 1961
3 78.0 in 2019	3 72.7 in 1976	3 23.65 in 1997	3 5.85 in 1974
78.0 in 2018	4 72.8 in 1963	4 23.43 in 1979	4 6.07 in 2023
5 77.9 in 1986	5 73.4 in 1970	5 21.95 in 2014	5 6.14 in 1991
6 77.8 in 1985	73.4 in 1969	6 21.67 in 1995	6 6.52 in 2008
7 77.7 in 1991	7 73.5 in 2008	7 21.13 in 1953	7 7.52 in 1970
8 77.5 in 2020	8 73.7 in 2000	8 20.63 in 1957	8 7.57 in 1955
9 76.8 in 2009	9 73.8 in 1992	9 20.18 in 2001	9 8.07 in 2012
76.8 in 1990	10 73.9 in 1987	10 19.62 in 1952	10 8.67 in 1950
...	...		
37 74.7 in 2025	19 74.7 in 2025		

Normal Temperature for Autumn at MKCF1 = 75.6°
Normal Rainfall for Autumn at MKCF1 = 13.66 inches

WAUCHULA (records began in January 1933):

Warmest Novembers		Coolest Novembers		Wettest Novembers		Driest Novembers	
1	75.7 in 1986	1	61.9 in 2012	1	11.18 in 1987	1	0.02 in 1940
2	74.6 in 2015	2	62.5 in 2014	2	10.38 in 1997	2	0.03 in 1967
3	74.4 in 1948		62.5 in 1949	3	6.43 in 1953	3	0.08 in 1960
4	73.2 in 1946	4	63.2 in 1962	4	5.89 in 1963	4	0.12 in 1991
5	72.7 in 2020	5	63.4 in 1970	5	4.75 in 1972	5	0.16 in 1974
	72.7 in 1985	6	63.5 in 1956	6	4.41 in 2002	6	0.17 in 2016
7	72.7 in 1958	7	63.8 in 2000	7	4.37 in 2014	7	0.19 in 2012
8	71.9 in 2022	8	63.9 in 1969	8	3.93 in 2010	8	0.23 in 1944
9	71.7 in 1988	9	64.0 in 1950	9	3.91 in 1937	9	0.24 in 1966
10	71.4 in 1978	10	64.4 in 1954	10	3.44 in 1988		0.24 in 1956
	71.4 in 1973	
		18	65.2 in 2025			17	0.37 in 2025

Normal Temperature for November at WAUF1 = 67.8°

Normal Rainfall for November at WAUF1 = 1.96 inches

Warmest Autumns		Coolest Autumns		Wettest Autumns		Driest Autumns	
1	78.1 in 2009	1	71.6 in 2014	1	31.84 in 2022	1	2.12 in 1961
2	77.9 in 2007	2	71.7 in 2012	2	27.02 in 1953	2	3.84 in 1974
3	77.7 in 1985	3	72.0 in 1956	3	23.48 in 1947	3	4.75 in 1967
4	77.6 in 2020	4	72.1 in 1943	4	23.20 in 2024	4	4.92 in 2008
5	77.5 in 2015	5	72.2 in 1954	5	20.13 in 1975	5	5.10 in 1978
6	77.2 in 1941	6	72.5 in 2010	6	20.12 in 1952	6	5.80 in 1991
7	76.9 in 2024		72.5 in 2006	7	19.04 in 1987	7	6.09 in 1976
	76.9 in 2018		72.5 in 1953	8	19.02 in 1960	8	6.10 in 1944
9	76.3 in 1946		72.5 in 1944	9	19.00 in 1997	9	6.32 in 1980
10	76.2 in 1989	10	72.6 in 1976	10	18.33 in 2017	10	6.54 in 2025
...		...					
52	74.0 in 2025	29	74.0 in 2025				
	74.0 in 1963		74.0 in 1963				

Normal Temperature for Autumn at WAUF1 = 74.6°

Normal Rainfall for Autumn at WAUF1 = 11.37 inches

ARCHBOLD BIO STN (records began in January 1969):

Warmest Novembers		Coolest Novembers		Wettest Novembers		Driest Novembers	
1	76.0 in 2015	1	62.2 in 2008	1	5.94 in 1987	1	0.00 in 2016
2	75.6 in 1986	2	63.1 in 2012	2	5.16 in 1998		0.00 in 2008
3	73.7 in 2020	3	63.2 in 1970	3	4.53 in 2022	3	0.04 in 2025
4	73.3 in 2022	4	64.2 in 1969	4	4.52 in 2002	4	0.08 in 1986
5	72.4 in 1992	5	64.4 in 1981	5	4.46 in 1997	5	0.12 in 1970
6	71.7 in 1985	6	65.1 in 2014	6	4.37 in 1992	6	0.13 in 1975
7	71.6 in 1994	7	65.3 in 2006	7	4.17 in 1977	7	0.20 in 1996
8	71.3 in 1978	8	65.4 in 2000	8	4.16 in 1994	8	0.21 in 2012
	71.3 in 1973	9	66.0 in 1991	9	3.80 in 1988	9	0.24 in 2000
10	71.2 in 2013	10	66.3 in 2025	10	3.78 in 2005	10	0.29 in 1973
			66.3 in 1997				

Normal Temperature for November at ACHF1 = 68.9°

Normal Rainfall for November at ACHF1 = 1.74 inches

Warmest Autumns		Coolest Autumns		Wettest Autumns		Driest Autumns	
1	78.2 in 2015	1	71.6 in 2008	1	22.87 in 2017	1	4.62 in 1996
2	78.0 in 2020	2	72.5 in 2012	2	22.49 in 1987	2	4.86 in 1990
3	77.4 in 1986	3	72.7 in 2006	3	21.60 in 2022	3	5.52 in 2006
4	76.6 in 2018		72.7 in 2000	4	20.74 in 1969	4	5.96 in 1974
5	76.3 in 2019		72.7 in 1976	5	18.09 in 2014	5	6.01 in 2018
	76.3 in 1985	6	72.8 in 1997	6	17.33 in 1977	6	6.16 in 2010
7	76.2 in 2017	7	73.0 in 1981	7	17.04 in 2001	7	6.27 in 2008
8	76.0 in 2022	8	73.1 in 1970	8	16.98 in 2021	8	6.53 in 1980
9	75.8 in 2023	9	73.2 in 2014	9	16.79 in 1998	9	7.16 in 1984
	75.8 in 2016		73.2 in 1984	10	16.55 in 2016	10	7.36 in 2007
	75.8 in 1973					11	7.42 in 2019
...		...				12	7.53 in 2025
33	74.5 in 2025	24	74.5 in 2025				
	74.5 in 2004		74.5 in 2004				

Normal Temperature for Autumn at ACHF1 = 75.1°

Normal Rainfall for Autumn at ACHF1 = 12.32 inches

PUNTA GORDA AREA (records began in May 1914):

Warmest Novembers			Coolest Novembers			Wettest Novembers			Driest Novembers		
1	78.3	in 1948	1	63.9	in 1917	1	8.02	in 2022	1	0.00	in 1931
2	76.8	in 1986	2	64.2	in 1970	2	6.91	in 2020	2	Trace	in 2025
3	75.9	in 1946		64.2	in 1968	3	5.97	in 1916	3	0.02	in 2012
4	75.5	in 2015	4	65.1	in 2008	4	5.52	in 2002	4	0.05	in 2016
5	74.3	in 2022	5	65.7	in 1969	5	5.07	in 1987		0.05	in 1990
	74.3	in 2020	6	65.8	in 1966	6	4.60	in 2014	6	0.07	in 2007
7	74.2	in 1985	7	66.1	in 1976	7	4.54	in 1965	7	0.08	in 1940
8	74.1	in 1958		66.1	in 1923	8	4.40	in 1972	8	0.09	in 1993
9	73.8	in 1961	9	67.0	in 2012	9	4.31	in 1921	9	0.10	in 1929
10	73.7	in 2024		67.0	in 1939	10	4.16	in 1951	10	0.11	in 1973
				67.0	in 1914						
...			...								
81	68.1	in 2025	29	68.1	in 2025						

Normal Temperature for November at PGD = 70.2°

Normal Rainfall for November at PGD = 2.12 inches

Warmest Autumns			Coolest Autumns			Wettest Autumns			Driest Autumns			
1	79.6	in 1948	1	72.4	in 1917	1	31.25	in 1959	1	5.37	in 2008	
2	79.5	in 2024	2	73.0	in 1976	2	24.77	in 2022	2	5.75	in 1961	
3	79.4	in 1986		73.0	in 1968	3	24.61	in 1922	3	5.87	in 1974	
4	79.3	in 2020	4	73.5	in 1923	4	23.01	in 1962	4	5.91	in 1927	
5	79.1	in 1946	5	73.7	in 1930	5	21.28	in 1953	5	5.95	in 1973	
6	78.7	in 2018	6	73.8	in 1914	6	20.82	in 1995	6	6.00	in 1931	
	78.7	in 1985	7	73.9	in 1943	7	20.64	in 1947	7	6.22	in 1991	
8	78.2	in 2023		73.9	in 1940	8	20.39	in 1924	8	6.33	in 1970	
9	78.1	in 2015	9	74.0	in 1970	9	18.72	in 1929	9	6.62	in 1978	
	78.1	in 1947	10	74.1	in 2008	10	18.66	in 1951	10	6.82	in 1920	
				74.1	in 1969				11	6.83	in 2025	
				74.1	in 1966							
...			...									
64	75.6	in 2025	38	75.6	in 2025							
	75.6	in 2012		75.6	in 2012							
	75.6	in 1983		75.6	in 1983							
	75.6	in 1963		75.6	in 1963							
	75.6	in 1916		75.6	in 1916							
	75.6	in 1915		75.6	in 1915							

Normal Temperature for Autumn at PGD = 76.5°

Normal Rainfall for Autumn at PGD = 12.01 inches

FORT MYERS AREA (records began in January 1902):

Warmest Novembers		Coolest Novembers		Wettest Novembers		Driest Novembers	
1	78.3 in 1986	1	64.1 in 1917	1	8.06 in 1987	1 Trace in 2025	
2	76.7 in 2015	2	64.9 in 1910	2	7.58 in 1998	Trace in 2016	
3	76.6 in 2022	3	65.4 in 1956	3	5.67 in 2002	Trace in 2000	
4	75.6 in 1985	4	65.7 in 1949	4	4.60 in 1921	Trace in 1944	
	75.6 in 1948	5	65.9 in 1923	5	4.47 in 2014	5 0.01 in 1990	
6	75.4 in 1994	6	66.1 in 1962	6	4.21 in 2020	6 0.02 in 1950	
7	75.0 in 1946	7	66.2 in 1969	7	4.11 in 1997	7 0.03 in 1945	
8	74.9 in 2020	8	66.3 in 1903	8	3.85 in 1972	8 0.04 in 1978	
9	74.2 in 1978	9	66.6 in 1950	9	3.75 in 2005	9 0.06 in 1905	
10	74.0 in 2024	10	66.7 in 1976	10	3.71 in 1922	10 0.08 in 1942	
	74.0 in 2017		66.7 in 1970				
	74.0 in 1988						
...		...					
54	70.8 in 2025	68	70.8 in 2025				
	70.8 in 2021		70.8 in 2021				
	70.8 in 1980		70.8 in 1980				
	70.8 in 1902		70.8 in 1902				

Normal Temperature for November at FMY = 71.5°

Normal Rainfall for November at FMY = 1.78 inches

Warmest Autumns		Coolest Autumns		Wettest Autumns		Driest Autumns	
1	80.4 in 1986	1	72.5 in 1903	1	32.14 in 1922	1	5.16 in 1988
2	80.2 in 1985	2	72.7 in 1910	2	27.85 in 1969	2	5.95 in 1942
3	79.8 in 2019	3	72.9 in 1976	3	26.80 in 1924	3	5.96 in 1974
4	79.3 in 2022	4	73.7 in 1908	4	23.34 in 1947	4	5.97 in 1907
5	79.1 in 2024	5	73.8 in 1913	5	23.33 in 1953	5	6.11 in 1992
	79.1 in 2020	6	74.0 in 1923	6	22.99 in 1962	6	6.12 in 1906
	79.1 in 2015	7	74.1 in 1953	7	22.36 in 2020	7	6.31 in 2004
8	78.8 in 1979	8	74.3 in 1909	8	21.74 in 1998	8	6.50 in 1966
9	78.7 in 1994	9	74.4 in 1943	9	21.44 in 1952	9	6.67 in 1978
10	78.6 in 2018		74.4 in 1914	10	20.90 in 2011	10	6.78 in 1904
...		
34	77.4 in 2025	87	77.4 in 2025			27	9.04 in 2025
	77.4 in 2013		77.4 in 2013				
	77.4 in 1972		77.4 in 1972				

Normal Temperature for Autumn at FMY = 77.2°

Normal Rainfall for Autumn at FMY = 13.86 inches

For more local climate information, please visit our web page at <https://www.weather.gov/tampabay> and look within the "Climate and Past Weather" drop down menu above the map of the area.