



NOAA - National Weather Service

Tampa Bay Area

2525 14th Avenue SE, Ruskin, Florida 33570

813-645-2323 <https://weather.gov/tampabay>

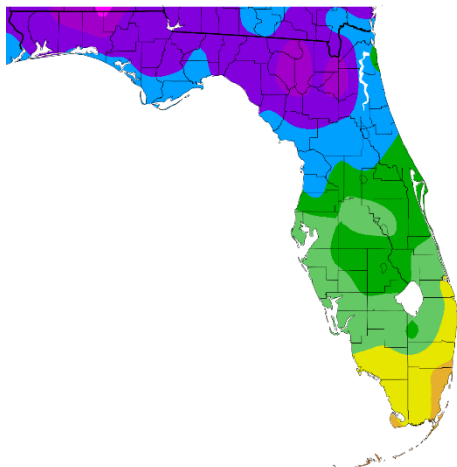
November and Autumn (Sep/Oct/Nov) 2024 Climate Summary

The first half of November was much warmer than normal, with temperatures more typical of late September. Then during the second half of the month we saw a few cold fronts move through bringing several days of much below normal temperatures. However, even with these cooler temperatures several sites ended up in the Top Ten Warmest for November with temperatures averaging 2 to 5 degrees above normal.

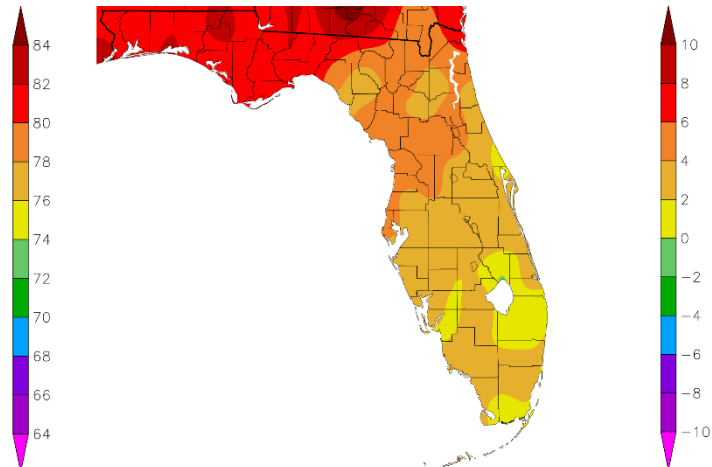
NOVEMBER TEMPERATURE (°F) :

Location	Rank	November 2024 Avg Temp	Normal Nov Temp	Dep fm Normal	Records Began
Fort Myers Area	10th Warmest (tie)	74.0°	71.5°	+2.5°	Jan 1902
Winter Haven Area	6th Warmest	73.8°	69.8°	+4.0°	Mar 1941
Punta Gorda Area	10th Warmest	73.7°	70.2°	+3.5°	May 1914
St Petersburg Area	9th Warmest	73.6°	70.6°	+3.0°	Aug 1914
Tampa Area	7th Warmest	73.0°	69.8°	+3.2°	Apr 1890
Sarasota-Bradenton Area	7th Warmest	72.8°	70.1°	+2.7°	Jan 1911
Venice	7th Warmest	72.8°	69.9°	+2.9°	May 1955
Tarpon Springs	6th Warmest (tie)	72.3°	67.5°	+4.8°	Jan 1892
Plant City	11th Warmest	72.2°	69.4°	+2.8°	Sep 1892
Lakeland Area	9th Warmest	71.8°	69.2°	+2.6°	Jan 1915
Bartow	15th Warmest (tie)	71.3°	68.3°	+3.0°	Jun 1892
St. Leo	13th Warmest	71.1°	66.8°	+4.3°	Apr 1895
Wauchula	15th Warmest (tie)	70.6°	67.8°	+2.8°	Jan 1933
Inverness 3 SE	4th Warmest (tie)	69.7°	62.7°	+5.0°	Jul 1948
Brooksville Area	21st Warmest (tie)	68.4°	65.1°	+3.3°	Jan 1892
Chiefland 5 ESE	5th Warmest	67.6°	62.7°	+4.9°	Jul 1956

Temperature (F)
11/1/2024 - 11/30/2024



Departure from Normal Temperature (F)
11/1/2024 - 11/30/2024



Graphics Source: NOAA Regional Climate Centers

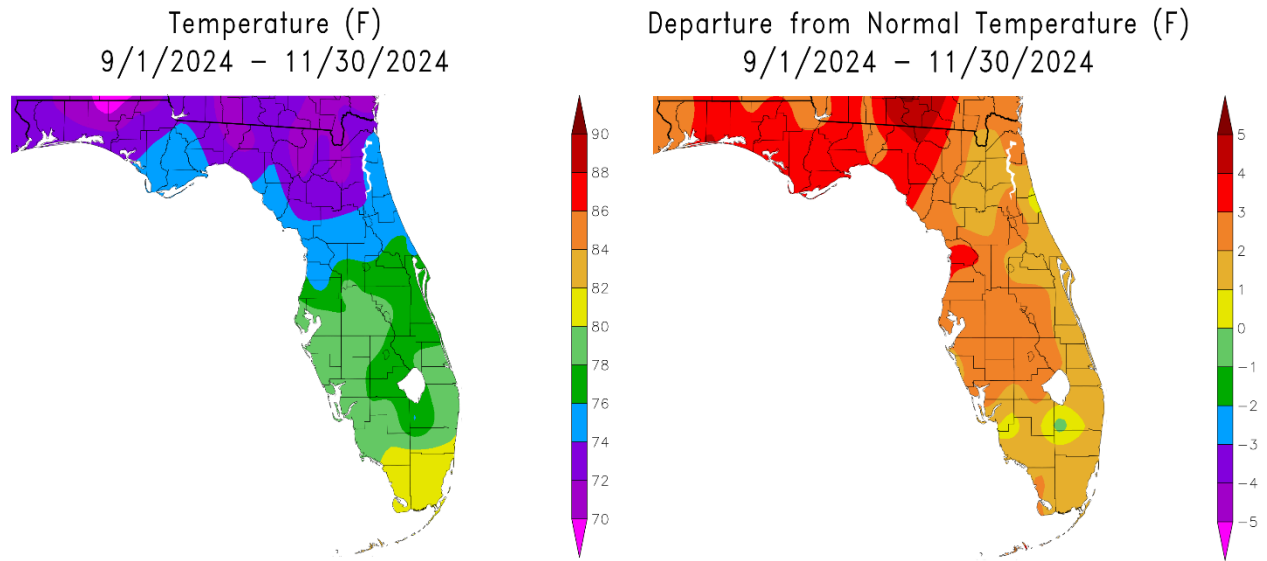
Contact: Paul Close, Paul.Close@noaa.gov

Date: 12/09/2024

As for Autumn, we had temperatures about 1 to 4 degrees above normal in September, near normal to about 2 degrees above normal in October, and 2 to 5 degrees above normal in November. Overall, this Autumn temperatures averaged about 1 to 4 degrees above normal which placed most locations in the Top Ten Warmest for Autumn.

AUTUMN (SEPTEMBER/OCTOBER/NOVEMBER) TEMPERATURE (°F) :

Location	Autumn 2024		Normal Aut Temp	Dep fm Normal	Records Began
	Rank	Avg Temp			
Punta Gorda Area	2nd Warmest	79.5°	76.5°	+3.0°	May 1914
St Petersburg Area	4th Warmest (tie)	79.3°	77.0°	+2.3°	Aug 1914
Fort Myers Area	5th Warmest (tie)	79.1°	77.2°	+1.9°	Jan 1902
Plant City	2nd Warmest	78.8°	76.1°	+2.7°	Sep 1892
Winter Haven Area	5th Warmest	78.6°	76.4	+2.2°	Jan 1941
Venice	4th Warmest	78.3°	76.0°	+2.3°	May 1955
Tampa Area	5th Warmest (tie)	78.1°	76.6°	+1.5°	Apr 1890
Sarasota-Bradenton Area	7th Warmest	77.6°	76.5°	+1.1°	Jan 1911
Lakeland Area	6th Warmest (tie)	77.4°	75.7°	+1.7°	Jan 1915
Tarpon Springs	5th Warmest	77.1°	74.8°	+2.3°	Jan 1892
Wauchula	15th Warmest (tie)	76.9°	74.6°	+2.3°	Jan 1933
Bartow	7th Warmest	76.7°	74.8°	+1.9°	Jun 1892
St. Leo	7th Warmest (tie)	76.1°	73.6°	+2.5°	Apr 1895
Inverness 3 SE	3rd Warmest	75.5°	71.9°	+3.6°	Jul 1948
Brooksville Area	16th Warmest (tie)	74.8°	72.7°	+2.1°	Jan 1892
Chiefland 5 ESE	7th Warmest (tie)	73.4°	70.9°	+2.5°	Jul 1956

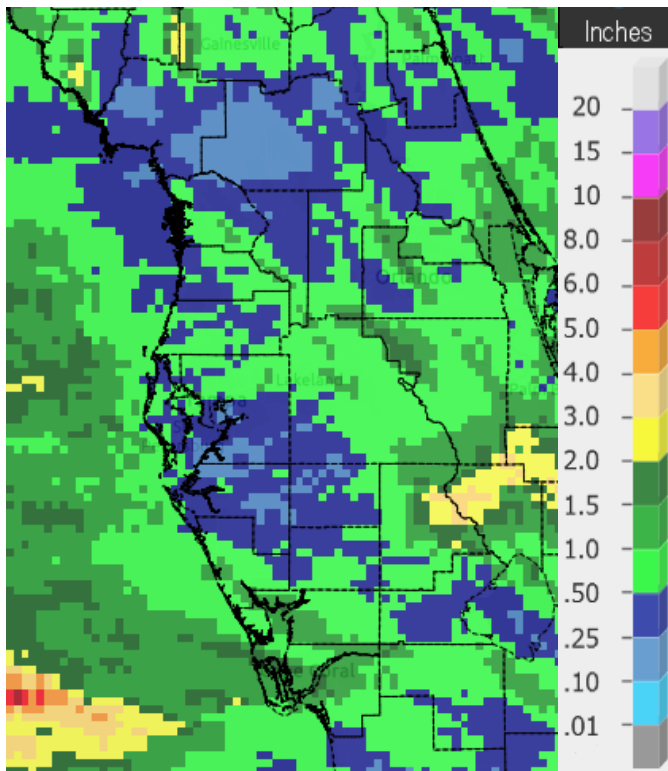


Graphics Source: NOAA Regional Climate Centers

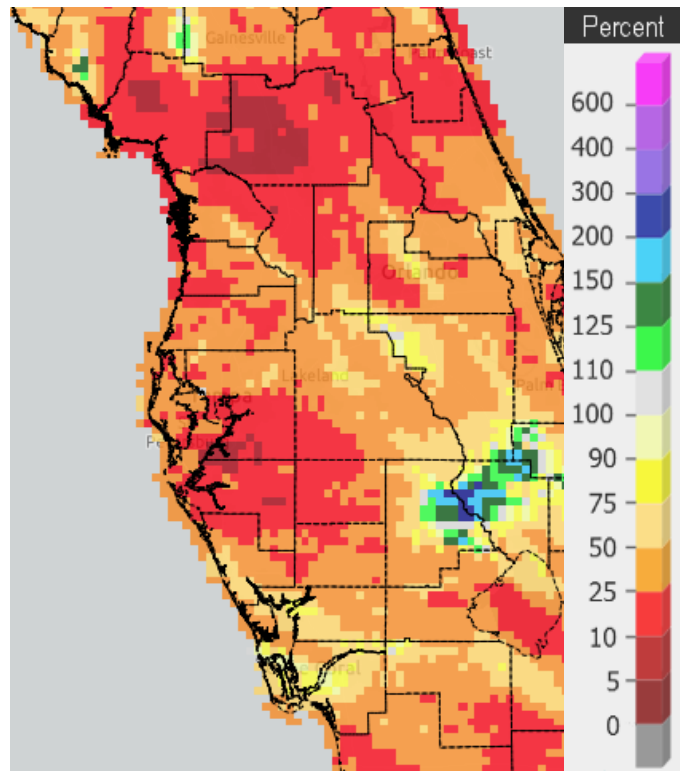
Looking at rainfall, most days in November 2024 were dry, which is not that unusual, but we did see a few fronts move through bringing some rainfall to parts of the area.

NOVEMBER RAINFALL (inches):

Location	November 2024 Rank	November 2024 Rain Total	Normal Nov Rain	Dep fm Normal	Records Began
Fort Myers Area	30th Wettest (tie)	2.20	1.78	+0.42	Jan 1902
Tampa Area	47th Wettest (tie)	1.94	1.40	+0.54	Apr 1890
Wauchula	44th Driest (tie)	1.23	1.96	-0.73	Jan 1933
Punta Gorda Area	47th Driest (tie)	1.01	2.12	-1.11	May 1914
Winter Haven Area	35th Driest	0.97	1.45	-0.48	Jan 1941
Venice	24th Driest	0.81	1.54	-0.73	May 1955
Lakeland Area	28th Driest (tie)	0.56	1.93	-1.37	Jan 1915
Plant City	34th Driest	0.50	1.76	-1.26	Sep 1892
Brooksville Area	31st Driest (tie)	0.47	1.59	-1.12	Jan 1892
Chiefland 5 ESE	6th Driest	0.46	2.22	-1.76	Jul 1956
Bartow	25th Driest (tie)	0.40	1.49	-1.09	Jun 1892
St. Petersburg Area	24th Driest (tie)	0.38	1.46	-1.08	Aug 1914
Inverness 3 SE	10th Driest	0.37	1.83	-1.46	Jul 1948
Tarpon Springs	16th Driest	0.25	1.90	-1.65	Jan 1892
St. Leo	7th Driest	0.18	1.86	-1.68	Apr 1895
Sarasota-Bradenton Area	8th Driest	0.13	1.81	-1.68	Jan 1911



Rainfall November 2024

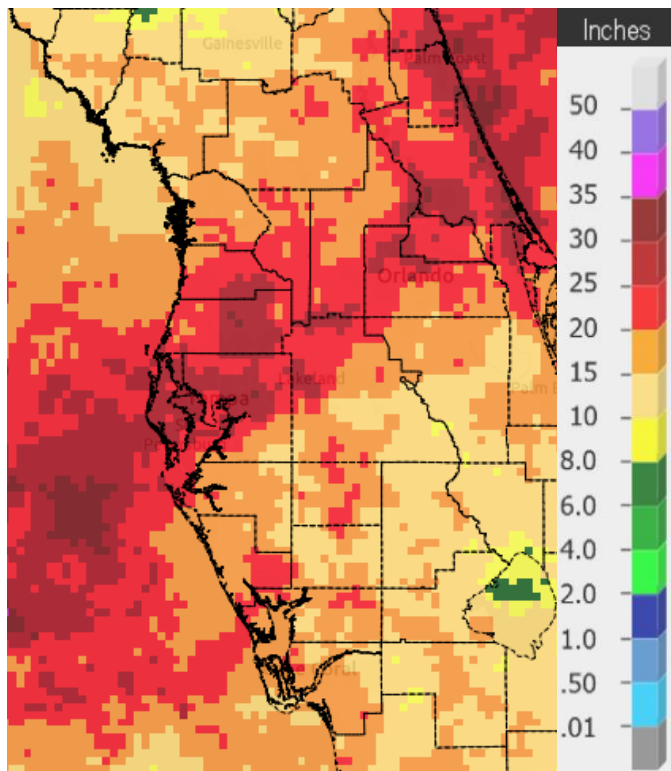


Percent of Normal

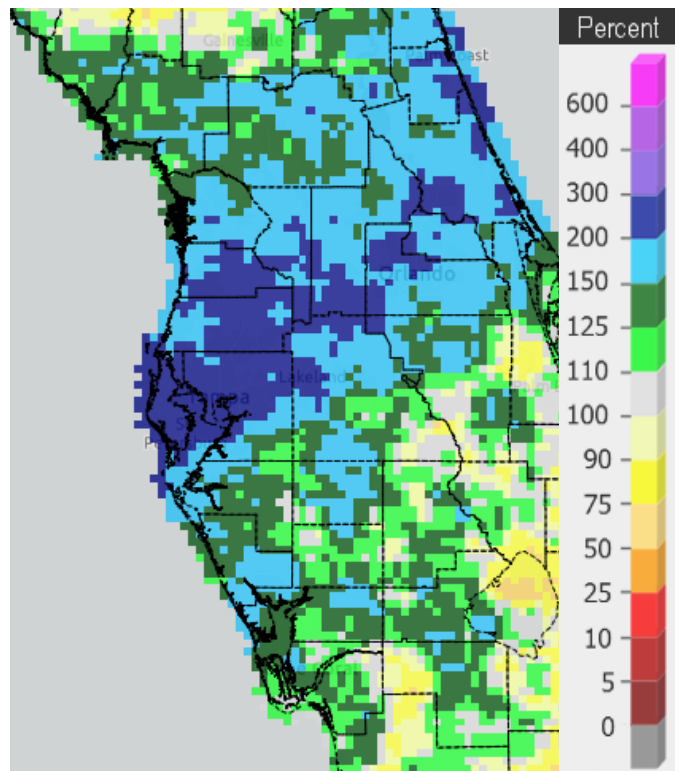
As for rainfall during Autumn it was much greater than normal in many areas thanks to the two tropical systems, Helene and especially Milton, with Tampa and Lakeland shattering the previous record for Autumn rainfall.

AUTUMN (SEPTEMBER/OCTOBER/NOVEMBER) RAINFALL (inches):

Location	Autumn 2024 Rank	Rain Total	Normal Aut Rain	Dep fm Normal	Records Began
Lakeland Area	1st Wettest	31.67	12.59	+19.08	Jan 1915
Tampa Area	1st Wettest	29.57	9.83	+19.74	Apr 1890
St. Leo	3rd Wettest	24.87	11.55	+13.32	Apr 1895
Plant City	2nd Wettest	23.63	11.33	+12.30	Sep 1892
Wauchula	4th Wettest	23.20	11.37	+11.83	Jan 1933
Tarpon Springs	4th Wettest	22.61	12.12	+10.49	Jan 1892
Fort Myers Area	16th Wettest	20.20	13.86	+6.34	Jan 1902
Brooksville Area	13th Wettest	19.07	10.17	+8.90	Jan 1892
Bartow	25th Wettest	16.61	11.83	+4.78	Jun 1892
Venice	17th Wettest	16.26	12.05	+4.21	May 1955
Inverness 3 SE	12th Wettest	15.83	10.56	+5.27	Jul 1948
Punta Gorda Area	38th Wettest	13.35	12.01	+1.34	May 1914
Winter Haven Area	23rd Wettest	12.88	8.98	+3.90	Jan 1941
Chiefland 5 ESE	22nd Wettest	11.99	11.21	+0.78	Jul 1956



Rainfall Autumn 2024



Percent of Normal

On the following pages are tables of the Top Ten Warmest, Coolest, Wettest, and Driest Novembers and Autumns at some official NWS locations, which include the average/total for this November and Autumn where available, and the 1991-2020 Normal (average) temperature and rainfall for November and Autumn.

CHIEFLAND 5 SE (records began in July 1956):

Warmest Novembers		Coolest Novembers		Wettest Novembers		Driest Novembers	
1	69.4 in 1985	1	56.6 in 1976	1	7.52 in 1972	1	Trace in 1978
2	69.2 in 1998	2	56.7 in 2008	2	6.47 in 1997	2	0.15 in 2012
3	68.9 in 1986	3	57.3 in 1970	3	6.02 in 1987	3	0.25 in 2016
4	68.6 in 1994	4	58.2 in 1962	4	5.94 in 2002	4	0.33 in 1956
5	67.6 in 2024	5	58.3 in 1968	5	5.25 in 1958	5	0.35 in 1970
6	67.5 in 1982	6	59.2 in 1969	6	4.95 in 1983	6	0.46 in 2024
7	66.9 in 2022	7	59.3 in 2021	7	4.80 in 1963	7	0.48 in 1998
	66.9 in 2020	8	59.4 in 2014	8	4.73 in 2013	8	0.61 in 1990
	66.9 in 1973	9	59.7 in 1984	9	4.55 in 1981	9	0.62 in 1991
10	66.5 in 1958	10	59.8 in 1963	10	4.50 in 1986	10	0.66 in 2001

Normal Temperature for November at CHIF1 = 62.7°

Normal Rainfall for November at CHIF1 = 2.22 inches

Warmest Autumns		Coolest Autumns		Wettest Autumns		Driest Autumns	
1	75.2 in 2018	1	67.1 in 1976	1	26.52 in 2004	1	2.05 in 1978
2	74.9 in 2020	2	67.9 in 2008	2	24.26 in 1983	2	3.83 in 2008
	74.9 in 1998	3	68.7 in 2006	3	20.54 in 1964	3	4.20 in 1961
4	74.2 in 1986	4	68.8 in 1968	4	18.65 in 1959	4	5.13 in 2010
5	73.9 in 1985	5	68.9 in 2000	5	17.59 in 1985	5	5.37 in 1970
6	73.7 in 1959	6	69.1 in 1963	6	16.94 in 1998	6	5.38 in 2003
7	73.4 in 2024		69.1 in 1969	7	16.38 in 1997	7	6.11 in 2022
	73.4 in 2019	8	69.3 in 1956	8	15.91 in 1960	8	6.24 in 1991
9	73.0 in 1973		69.3 in 1962	9	15.67 in 2002	9	6.61 in 1974
10	72.9 in 2016	10	69.6 in 2010	10	15.26 in 2017	10	6.65 in 2005
				...			
				22	11.99 in 2024		

Normal Temperature for Autumn at CHIF1 = 70.9°

Normal Rainfall for Autumn at CHIF1 = 11.21 inches

INVERNESS 3 SE (records began in July 1948):

Warmest Novembers		Coolest Novembers		Wettest Novembers		Driest Novembers	
1	73.1 in 2015	1	59.0 in 1991	1	7.73 in 1980	1	0.00 in 2004
2	71.0 in 2020	2	59.5 in 1976	2	6.40 in 1997		0.00 in 1978
3	70.3 in 1958	3	60.3 in 2002	3	6.21 in 1972	3	0.01 in 2016
4	69.7 in 2024	4	60.5 in 2014	4	5.48 in 1951	4	0.02 in 1950
	69.7 in 2022	5	60.6 in 1997	5	4.90 in 2015	5	0.07 in 2012
6	69.3 in 1978	6	61.0 in 1950	6	4.78 in 2014	6	0.23 in 1993
	69.3 in 1964	7	61.3 in 2012	7	4.69 in 1988	7	0.25 in 1967
8	68.8 in 1957	8	61.4 in 1995	8	4.35 in 2022	8	0.28 in 1956
9	68.6 in 1998	9	61.6 in 2000	9	3.77 in 2005	9	0.36 in 2001
10	68.5 in 1973	10	61.7 in 1949	10	3.70 in 2017	10	0.37 in 2024
	68.5 in 1960						

Normal Temperature for November at INVF1 = 64.3°

Normal Rainfall for November at INVF1 = 1.83 inches

Warmest Autumns		Coolest Autumns		Wettest Autumns		Driest Autumns	
1	76.8 in 2020	1	68.4 in 1976	1	21.53 in 2017	1	2.08 in 1967
2	76.1 in 2015	2	69.4 in 1997	2	21.34 in 1960	2	2.92 in 1978
3	75.5 in 2024	3	70.2 in 1991	3	21.07 in 1950	3	4.19 in 1961
4	75.1 in 1958	4	70.4 in 2006	4	19.73 in 2021	4	4.56 in 1974
5	75.0 in 2019	5	70.6 in 2000	5	19.55 in 1992	5	4.97 in 2010
6	74.9 in 1998	6	70.7 in 1987	6	19.27 in 1997	6	5.13 in 2003
	74.9 in 1960	7	70.8 in 2014	7	18.83 in 2004	7	5.37 in 1954
	74.9 in 1959	8	71.1 in 1956	8	17.75 in 2016	8	5.47 in 2012
9	74.2 in 1948	9	71.3 in 2002	9	17.32 in 2001	9	5.85 in 2000
10	74.1 in 2009	10	71.5 in 1996	10	16.51 in 1988	10	6.14 in 1996
	74.1 in 2007			11	16.40 in 1979		
				12	15.83 in 2024		

Normal Temperature for Autumn at INVF1 = 71.9°

Normal Rainfall for Autumn at INVF1 = 10.56 inches

BROOKSVILLE AREA (records began in January 1892):

Warmest Novembers	Coollest Novembers	Wettest Novembers	Driest Novembers
1 73.2 in 2015	1 57.5 in 1901	1 9.31 in 1916	1 0.00 in 1967
2 72.7 in 1948	2 60.3 in 2008	2 9.17 in 1987	2 Trace in 2016
3 72.6 in 1946	3 60.5 in 1892	3 8.30 in 1951	Trace in 1931
4 71.0 in 2020	4 60.8 in 2014	4 7.08 in 2014	4 0.01 in 1978
71.0 in 1958	5 61.1 in 1923	5 6.64 in 1937	5 0.05 in 1928
6 70.7 in 1994	6 61.3 in 2000	6 6.56 in 1980	6 0.12 in 2001
7 70.5 in 1973	7 61.4 in 2012	7 6.28 in 1999	7 0.15 in 1913
70.5 in 1896	61.4 in 1917	8 6.14 in 1972	8 0.18 in 1940
9 70.1 in 1905	9 61.8 in 2002	9 5.49 in 1932	9 0.22 in 1956
10 69.8 in 2022	10 61.9 in 1962	10 5.14 in 1988	0.22 in 1924
69.8 in 1988		5.14 in 1920	0.22 in 1900
69.8 in 1929			...
...			31 0.47 in 2024
21 68.4 in 2024			0.47 in 1991
68.4 in 1992			
68.4 in 1938			

Normal Temperature for November at BKV = 65.1°

Normal Rainfall for November at BKV = 1.59 inches

Warmest Autumns	Coollest Autumns	Wettest Autumns	Driest Autumns
1 76.6 in 2020	1 69.3 in 1892	1 27.84 in 1950	1 2.30 in 1903
2 76.0 in 1911	2 69.5 in 1901	2 24.74 in 1912	2 3.58 in 2008
3 75.9 in 2015	3 70.2 in 1920	3 22.68 in 1894	3.58 in 1978
4 75.7 in 1905	4 70.3 in 2008	4 21.62 in 1947	4 3.87 in 1967
5 75.4 in 1941	5 70.4 in 1923	5 21.50 in 1922	5 3.97 in 1909
75.4 in 1919	6 70.5 in 2000	6 21.46 in 1995	6 4.10 in 2010
75.4 in 1915	7 70.8 in 2006	7 21.24 in 1921	7 4.58 in 1940
8 75.3 in 1946	8 70.9 in 2014	8 20.56 in 1938	8 4.61 in 1991
75.3 in 1927	70.9 in 1894	9 20.36 in 1911	9 5.37 in 2015
10 75.2 in 2018	10 71.0 in 1953	10 19.88 in 1988	10 5.61 in 1961
75.2 in 1973		11 19.71 in 1953	
12 75.1 in 1958		12 19.65 in 1979	
75.1 in 1902		13 19.07 in 2024	
14 75.0 in 1960			
15 74.9 in 2019			
16 74.8 in 2024			
74.8 in 1959			
74.8 in 1929			
74.8 in 1926			

Normal Temperature for Autumn at BKV = 72.7°

Normal Rainfall for Autumn at BKV = 10.17 inches

ST LEO (records began in April 1895):

Warmest Novembers		Coolest Novembers		Wettest Novembers		Driest Novembers	
1	75.1 in 1986	1	60.8 in 1917	1	12.48 in 1988	1	Trace in 1960
2	73.6 in 1985	2	61.3 in 1901	2	8.34 in 1951	2	0.02 in 1978
3	73.2 in 1946	3	61.7 in 1910	3	7.36 in 1987	3	0.03 in 1931
4	73.1 in 1948	4	62.2 in 1930	4	7.21 in 2014		0.03 in 1928
5	72.0 in 1998	5	62.3 in 2014	5	6.72 in 2022	5	0.06 in 2016
6	71.8 in 2015	6	62.5 in 1923	6	6.22 in 1916	6	0.08 in 2012
	71.8 in 1994	7	62.6 in 1970	7	6.12 in 1963	7	0.18 in 2024
8	71.5 in 1982	8	62.8 in 1933	8	6.06 in 1972	8	0.21 in 1993
9	71.4 in 1958		62.8 in 1932	9	5.84 in 1911	9	0.22 in 1940
10	71.3 in 2020		62.8 in 1904	10	5.61 in 1918	10	0.23 in 1913
	71.3 in 1978						
12	71.2 in 2003						
13	71.1 in 2024						

Normal Temperature for November at STLf1 = 66.8°
 Normal Rainfall for November at STLf1 = 1.86 inches

Warmest Autumns		Coolest Autumns		Wettest Autumns		Driest Autumns	
1	77.9 in 1985	1	69.8 in 1917	1	25.80 in 1988	1	1.52 in 1978
2	77.4 in 1986	2	70.1 in 1903	2	25.13 in 1912	2	3.19 in 1940
3	76.5 in 2020	3	70.2 in 1930	3	24.87 in 2024	3	3.56 in 2010
	76.5 in 1998	4	70.7 in 1920	4	24.60 in 1922	4	3.81 in 1909
5	76.4 in 2007	5	71.0 in 1976	5	22.73 in 1953	5	4.14 in 1967
6	76.2 in 1946		71.0 in 1923	6	21.77 in 1997	6	4.76 in 1991
7	76.1 in 2024	7	71.1 in 1910	7	21.48 in 1982	7	5.09 in 2008
	76.1 in 2009	8	71.4 in 1943	8	21.40 in 1950	8	5.11 in 2018
	76.1 in 1941	9	71.5 in 2014	9	21.29 in 1921	9	5.33 in 1931
10	75.9 in 2004	10	71.8 in 1956	10	20.71 in 1949	10	5.63 in 1961
			71.8 in 1922				

Normal Temperature for Autumn at STLf1= 73.6°
 Normal Rainfall for Autumn at STLf1 = 11.55 inches

TARPON SPRINGS (records began in January 1892):

Warmest Novembers		Coolest Novembers		Wettest Novembers		Driest Novembers	
1	75.9 in 1986	1	59.6 in 2004	1	9.13 in 1988	1	0.00 in 2016
2	74.4 in 1985	2	60.0 in 1901	2	8.18 in 1916	2	Trace in 1939
3	74.3 in 1946	3	61.5 in 1917	3	6.99 in 1997		Trace in 1931
4	73.5 in 2015	4	61.7 in 1962	4	6.63 in 1992	4	0.02 in 1978
5	72.6 in 1994		61.7 in 1892	5	6.09 in 2014	5	0.06 in 1933
6	72.3 in 2024	6	61.9 in 1910	6	5.80 in 1963	6	0.08 in 1942
	72.3 in 1998	7	62.5 in 1904	7	5.57 in 1920	7	0.09 in 1940
8	71.8 in 2003	8	62.6 in 2014	8	5.49 in 2020		0.09 in 1928
9	71.6 in 1896		62.6 in 1970	9	5.19 in 1955	9	0.10 in 1930
10	71.4 in 1982	10	63.0 in 1976	10	5.18 in 1896	10	0.13 in 1924
			63.0 in 1912			11	0.17 in 2007
						12	0.19 in 1964
						13	0.21 in 1905
						14	0.22 in 1945
						15	0.23 in 1909
						16	0.25 in 2024

Normal Temperature for November at TRPF1 = 67.5°
 Normal Rainfall for November at TRPF1 = 1.90 inches

Warmest Autumns		Coolest Autumns		Wettest Autumns		Driest Autumns	
1	78.1 in 1985	1	70.8 in 1917	1	28.87 in 1911	1	1.85 in 2005
2	78.0 in 1986		70.8 in 1892	2	28.34 in 1988	2	3.33 in 1978
3	77.9 in 1919	3	71.4 in 1903	3	24.31 in 2014	3	3.44 in 1967
4	77.6 in 2018	4	71.5 in 1976	4	22.61 in 2024	4	4.03 in 2023
5	77.1 in 2024	5	71.7 in 1967	5	22.25 in 1997	5	4.62 in 2008
6	76.8 in 2020		71.7 in 1901	6	21.71 in 1983	6	4.85 in 2010
	76.8 in 1946	7	71.9 in 1963	7	21.70 in 1912	7	4.86 in 1927
8	76.7 in 2015		71.9 in 1962	8	21.43 in 1975	8	5.57 in 1909
	76.7 in 1994		71.9 in 1940	9	20.78 in 1995	9	5.74 in 1930
10	76.6 in 2019		71.9 in 1904		20.78 in 1959	10	5.99 in 1981
	76.6 in 1998		71.9 in 1899				

Normal Temperature for Autumn at TRPF1 = 74.8°
 Normal Rainfall for Autumn at TRPF1 = 12.12 inches

TAMPA AREA (records began in April 1890):

Warmest Novembers		Coolest Novembers		Wettest Novembers		Driest Novembers	
1	76.3 in 1986	1	61.4 in 1901	1	6.12 in 1963	1	Trace in 1960
2	76.2 in 2015	2	61.9 in 1970	2	5.97 in 1988	2	0.01 in 2016
3	74.6 in 2020	3	62.3 in 1968	3	5.40 in 2020		0.01 in 1978
4	73.7 in 1946	4	62.5 in 1962	4	5.38 in 1944	4	0.04 in 1931
5	73.6 in 1948	5	62.8 in 1976	5	5.26 in 2014	5	0.05 in 1928
	73.6 in 1985	6	62.9 in 1969	6	5.18 in 2022	6	0.08 in 1927
7	73.0 in 2024		62.9 in 1917	7	4.89 in 1953	7	0.10 in 2001
8	72.7 in 1958	8	63.3 in 1910	8	4.85 in 1925		0.10 in 1942
9	72.6 in 2022	9	63.4 in 1923	9	4.75 in 1941	9	0.11 in 2007
10	72.5 in 1998	10	63.7 in 1949	10	4.36 in 1987	10	0.12 in 2017
							0.12 in 1974
				
				47	1.94 in 2024	88	1.94 in 2024
					1.94 in 1910		1.94 in 1910

Normal Temperature for November at TPA = 69.8°

Normal Rainfall for November at TPA = 1.40 inches

Warmest Autumns		Coolest Autumns		Wettest Autumns		Driest Autumns	
1	79.7 in 2020	1	71.0 in 1976	1	29.57 in 2024	1	3.19 in 2010
2	79.0 in 2015	2	71.6 in 1903	2	24.38 in 1894	2	3.30 in 1909
3	78.9 in 2018		71.6 in 1891	3	22.83 in 1912	3	3.62 in 1961
4	78.4 in 1986	4	71.7 in 1968	4	20.45 in 1997	4	4.06 in 1942
5	78.1 in 2024	5	71.8 in 1917	5	19.80 in 1922	5	4.21 in 1940
	78.1 in 2019		71.8 in 1901	6	19.62 in 1988	6	4.25 in 1913
7	77.9 in 2017	7	71.9 in 1923	7	19.07 in 1947	7	4.35 in 1974
8	77.8 in 1985	8	72.2 in 1892	8	18.57 in 2022	8	5.07 in 1967
9	77.7 in 2016	9	72.3 in 1962	9	18.15 in 1953	9	5.22 in 1984
10	77.5 in 1919	10	72.4 in 1956	10	17.60 in 1890	10	5.33 in 2003
			72.4 in 1910				

Normal Temperature for Autumn at TPA = 76.6°

Normal Rainfall for Autumn at TPA = 9.83 inches

ST PETERSBURG (records began in August 1914):

Warmest Novembers		Coolest Novembers		Wettest Novembers		Driest Novembers	
1	77.4 in 1986	1	63.9 in 1917	1	6.94 in 1988	1	0.00 in 1931
2	76.3 in 1985	2	64.3 in 1962	2	6.85 in 1953	2	0.02 in 1960
3	74.9 in 2015	3	64.7 in 1949	3	6.80 in 1987	3	0.03 in 2016
4	74.8 in 1946	4	65.1 in 1976	4	6.18 in 2020		0.03 in 1942
5	74.5 in 1948	5	65.2 in 1995	5	6.04 in 1963	5	0.04 in 2001
6	74.3 in 2020		65.2 in 1951	6	5.71 in 1916	6	0.10 in 1978
7	73.8 in 2005	7	65.3 in 1950	7	5.63 in 1925	7	0.12 in 1974
8	73.7 in 1978	8	65.4 in 1954	8	5.08 in 1954	8	0.14 in 1930
9	73.6 in 2024	9	65.7 in 1956	9	5.03 in 1968	9	0.15 in 1928
10	73.5 in 1958		65.7 in 1923	10	5.02 in 1915	10	0.18 in 1946
						...	
						24	0.38 in 2024
							0.38 in 1940
							0.38 in 1927

Normal Temperature for November at SPG = 70.6°

Normal Rainfall for November at SPG = 1.46 inches

Warmest Autumns		Coolest Autumns		Wettest Autumns		Driest Autumns	
1	80.0 in 1985	1	72.6 in 1917	1	32.75 in 1988	1	2.13 in 2010
2	79.9 in 1986	2	73.2 in 1956	2	30.04 in 1953	2	4.00 in 1990
3	79.8 in 2005	3	73.4 in 1952	3	26.31 in 1986	3	4.49 in 1967
4	79.3 in 2024	4	73.5 in 1954	4	26.30 in 1952	4	4.69 in 2008
	79.3 in 2020		73.5 in 1953	5	21.83 in 1997	5	4.84 in 1964
6	79.1 in 2015	6	73.6 in 1976	6	21.06 in 1922	6	5.01 in 1940
7	79.0 in 2018		73.6 in 1962	7	20.14 in 1954	7	5.52 in 1927
8	78.9 in 2019		73.6 in 1923	8	19.12 in 1918	8	5.61 in 1966
9	78.4 in 2013	9	73.7 in 1943	9	19.07 in 2001	9	5.73 in 1965
	78.4 in 1941	10	73.9 in 1950	10	18.52 in 1959	10	5.82 in 2023

Normal Temperature for Autumn at SPG = 77.0°

Total Rainfall for Autumn 2024 = *21.77 inches

Normal Rainfall for Autumn at SPG = 10.28 inches

* Rainfall missing on several days in September

PLANT CITY (records began in September 1892):

Warmest Novembers	Coollest Novembers	Wettest Novembers	Driest Novembers
1 75.7 in 1986	1 61.8 in 1932	1 7.88 in 1953	1 0.00 in 1960
2 74.6 in 2015	2 62.0 in 1930	2 7.34 in 1988	0.00 in 1931
3 74.3 in 1948	3 62.1 in 1917	3 6.89 in 2020	0.00 in 1905
4 74.2 in 2020	4 62.4 in 1933	4 6.75 in 2014	4 0.01 in 2007
5 73.9 in 1946	5 62.6 in 1904	5 6.46 in 1963	5 0.05 in 2012
6 73.8 in 2022	6 62.9 in 1912	6 5.90 in 1918	6 0.10 in 1928
7 72.7 in 1985	7 63.1 in 2014	7 5.56 in 1971	0.10 in 1924
8 72.5 in 1896	8 63.3 in 1962	8 4.89 in 2022	8 0.13 in 1940
9 72.3 in 1994	63.3 in 1949	9 4.63 in 1980	9 0.15 in 2017
72.3 in 1958	10 63.4 in 1926	10 4.52 in 1987	0.15 in 1978
11 72.2 in 2024			...
			34 0.50 in 2024

Normal Temperature for November at PLCF1 = 69.4°
Normal Rainfall for November at PLCF1 = 1.76 inches

Warmest Autumns	Coollest Autumns	Wettest Autumns	Driest Autumns
1 79.6 in 2020	1 70.4 in 1930	1 25.05 in 1947	1 1.89 in 1909
2 78.8 in 2024	2 70.8 in 1932	2 23.63 in 2024	2 1.99 in 1961
3 78.4 in 2018	3 71.2 in 1940	3 23.20 in 1894	3 3.56 in 1940
4 78.3 in 2019	4 71.5 in 2000	4 23.04 in 1988	4 4.08 in 1991
5 77.9 in 1986	5 71.6 in 1976	5 21.72 in 1953	5 4.29 in 1927
6 77.4 in 2015	6 71.7 in 1943	6 20.54 in 2020	6 4.41 in 1990
7 77.2 in 2022	7 72.0 in 1937	7 20.48 in 2022	7 4.55 in 2010
77.2 in 1985	72.0 in 1909	8 20.36 in 2014	8 4.57 in 1939
9 76.8 in 2023	9 72.2 in 1968	9 20.15 in 2004	9 4.63 in 1967
10 76.4 in 1946	10 72.4 in 1926	10 20.06 in 1998	10 4.67 in 2008

Normal Temperature for Autumn at PLCF1 = 76.1°
Normal Rainfall for Autumn at PLCF1 = 11.33 inches

LAKELAND AREA (records began in January 1915):

Warmest Novembers		Coolest Novembers		Wettest Novembers		Driest Novembers	
1	76.9 in 1986	1	62.6 in 1970	1	7.56 in 2014	1	0.00 in 1924
2	75.4 in 2015	2	62.9 in 1962	2	7.19 in 1988	2	Trace in 2016
3	73.4 in 1985	3	63.0 in 1969	3	6.08 in 1987		Trace in 1960
4	73.3 in 1994	4	63.4 in 1949	4	5.94 in 1941		Trace in 1917
	73.3 in 1948	5	63.5 in 1976	5	5.80 in 2020	5	0.03 in 1931
6	73.1 in 1946		63.5 in 1951	6	5.71 in 1963	6	0.05 in 1928
7	73.0 in 2020		63.5 in 1950	7	5.54 in 1980	7	0.07 in 1950
8	72.6 in 2022	8	63.7 in 1968	8	5.37 in 1953	8	0.08 in 2012
9	71.8 in 2024	9	63.9 in 2008	9	4.59 in 2018	9	0.10 in 1991
10	71.6 in 2003	10	64.0 in 1923	10	4.48 in 1997	10	0.11 in 1940
	71.6 in 1988					...	
						28	0.56 in 2024
							0.56 in 1965

Normal Temperature for November at LLDF1 = 69.2°

Normal Rainfall for November at LLDF1 = 1.93 inches

Warmest Autumns		Coolest Autumns		Wettest Autumns		Driest Autumns	
1	79.2 in 1986	1	71.5 in 1976	1	31.67 in 2024	1	2.99 in 1961
2	78.6 in 2020	2	72.1 in 1943	2	22.45 in 2014	2	3.21 in 1940
3	78.3 in 2015	3	72.2 in 1923	3	21.46 in 2004	3	4.16 in 1942
4	78.1 in 1985	4	72.3 in 2006	4	19.78 in 1947	4	4.25 in 1927
5	78.0 in 2018		72.3 in 1968	5	19.52 in 1918	5	4.28 in 1934
6	77.4 in 2024		72.3 in 1956	6	18.91 in 2022	6	4.58 in 2010
	77.4 in 2019	7	72.4 in 1967	7	18.47 in 1998	7	4.69 in 2008
8	77.0 in 1994	8	72.5 in 1940	8	18.39 in 1929	8	5.01 in 1967
9	76.8 in 2009	9	72.6 in 1954	9	18.29 in 1953	9	5.12 in 1978
10	76.7 in 1990	10	72.7 in 1962	10	17.36 in 1997	10	5.35 in 1974
			72.7 in 1953				
			72.7 in 1924				

Normal Temperature for Autumn at LLDF1 = 75.7°

Normal Rainfall for Autumn at LLDF1 = 12.59 inches

WINTER HAVEN AREA (records began in January 1941):

Warmest Novembers	Coollest Novembers	Wettest Novembers	Driest Novembers
1 76.8 in 1986	1 63.1 in 1962	1 7.81 in 1988	1 0.00 in 1960
2 75.6 in 1948	2 63.2 in 1970	2 7.13 in 1987	0.00 in 1950
3 75.1 in 2015	3 63.9 in 2008	3 6.76 in 1953	3 Trace in 2011
4 74.9 in 1985	63.9 in 1968	4 6.27 in 1963	4 0.01 in 2012
5 74.5 in 1946	5 64.1 in 1976	5 5.32 in 1994	5 0.07 in 2016
6 73.8 in 2024	6 64.5 in 1949	6 5.21 in 1980	6 0.13 in 1966
7 73.5 in 2020	7 64.6 in 1969	7 4.94 in 1951	7 0.16 in 1942
8 73.1 in 1994	8 64.7 in 1981	8 4.07 in 1995	8 0.19 in 1985
9 72.6 in 1988	9 64.9 in 1950	9 4.00 in 2020	9 0.20 in 2017
10 72.5 in 2022	10 65.0 in 2012	10 3.97 in 1968	0.20 in 1991
	65.0 in 1951		0.20 in 1967
	
		48 0.97 in 2024	35 0.97 in 2024

Normal Temperature for November at GIF = 69.8°

Normal Rainfall for November at GIF = 1.45 inches

Warmest Autumns	Coollest Autumns	Wettest Autumns	Driest Autumns
1 79.2 in 2020	1 71.8 in 1976	1 21.86 in 1987	1 2.72 in 1961
2 79.1 in 2018	2 72.2 in 1968	2 20.61 in 1947	2 3.11 in 2009
3 79.0 in 1986	3 72.5 in 1962	3 20.57 in 1953	3 4.27 in 1967
4 78.7 in 2019	4 73.0 in 1963	4 20.35 in 1960	4 4.29 in 2008
5 78.6 in 2024	5 73.2 in 2006	5 18.82 in 1959	5 4.91 in 1985
6 78.4 in 1985	6 73.3 in 2008	6 18.11 in 1950	6 5.14 in 1942
7 78.0 in 2015	73.3 in 1981	7 17.84 in 2014	7 5.44 in 1978
8 77.2 in 1998	73.3 in 1953	8 17.59 in 2001	8 5.54 in 2006
77.2 in 1989	9 73.4 in 1943	9 17.16 in 1988	9 5.78 in 1990
77.2 in 1946	10 73.5 in 2000	10 16.36 in 2020	10 5.87 in 2015
77.2 in 1941		...	
		23 12.88 in 2024	

Normal Temperature for Autumn at GIF = 76.4°

Normal Rainfall for Autumn at GIF = 8.98 inches

BARTOW (records began in June 1892):

Warmest Novembers	Coollest Novembers	Wettest Novembers	Driest Novembers
1 76.4 in 1986	1 60.9 in 1917	1 7.40 in 1987	1 0.00 in 2016
2 75.3 in 2015	2 61.5 in 1970	2 7.36 in 2002	0.00 in 1960
3 74.5 in 1948	3 62.0 in 1910	3 6.52 in 1963	3 0.02 in 1931
4 73.6 in 2013	4 62.3 in 1901	4 6.33 in 1988	4 0.04 in 1966
73.6 in 1985	5 62.6 in 1904	5 5.97 in 1953	0.04 in 1928
6 73.5 in 1946	62.6 in 1892	6 5.80 in 1951	6 0.05 in 2012
7 73.0 in 1994	7 62.9 in 1962	7 5.18 in 2022	7 0.06 in 1950
8 72.9 in 1958	8 63.5 in 2008	8 4.75 in 1911	8 0.09 in 1923
9 72.5 in 2020	63.5 in 1912	9 4.71 in 1937	9 0.10 in 2007
72.5 in 1998	10 63.6 in 1939	10 4.68 in 2015	0.10 in 1974
...			...
15 71.3 in 2024			25 0.40 in 2024
71.3 in 1978			0.40 in 1978

Normal Temperature for November at BARF1 = 68.3°
Normal Rainfall for November at BARF1 = 1.49 inches

Warmest Autumns	Coollest Autumns	Wettest Autumns	Driest Autumns
1 77.8 in 2020	1 71.0 in 1894	1 31.36 in 2022	1 3.71 in 1942
77.8 in 2015	2 71.1 in 1892	2 26.99 in 1894	2 4.88 in 2010
3 77.2 in 1998	3 71.4 in 1917	3 21.30 in 1947	3 5.00 in 1940
4 77.1 in 2018	4 71.8 in 1976	4 20.97 in 1917	4 5.02 in 1990
5 76.8 in 2009	5 72.1 in 1895	5 20.77 in 1922	5 5.25 in 1961
76.8 in 1946	6 72.3 in 1914	6 20.38 in 1959	6 5.26 in 1939
7 76.7 in 2024	7 72.4 in 1970	7 20.31 in 1982	7 5.29 in 1984
8 76.6 in 1919	8 72.5 in 1904	8 19.77 in 1953	8 5.47 in 1974
9 76.5 in 2019	9 72.8 in 1967	9 19.43 in 1902	9 5.57 in 1906
10 76.4 in 1994	72.8 in 1963	10 19.30 in 1960	10 5.90 in 1927
76.4 in 1958	72.8 in 1935	...	
		25 16.61 in 2024	

Normal Temperature for Autumn at BARF1 = 74.8°
Normal Rainfall for Autumn at BARF1 = 11.83 inches

SARASOTA-BRADENTON AREA (records began in January 1911):

Warmest Novembers		Coolest Novembers		Wettest Novembers		Driest Novembers	
1	76.1 in 1986	1	63.2 in 1917	1	9.40 in 1997	1	0.00 in 1931
2	75.4 in 2015	2	63.5 in 1949	2	7.62 in 2020	2	Trace in 1940
3	74.7 in 2020		63.5 in 1923	3	6.81 in 1920		Trace in 1928
4	73.2 in 1948	4	64.2 in 1976	4	6.24 in 1925	4	0.02 in 2016
5	73.1 in 2022	5	64.5 in 2008	5	5.68 in 1953	5	0.06 in 2001
	73.1 in 1958	6	64.6 in 2014	6	5.18 in 1941		0.06 in 1991
7	72.8 in 2024		64.6 in 1981	7	5.15 in 1988	7	0.09 in 1930
8	72.7 in 1994	8	64.7 in 1968	8	4.94 in 1918	8	0.13 in 2024
9	72.4 in 1985	9	64.8 in 1933	9	4.69 in 2002	9	0.16 in 2007
10	72.2 in 2013	10	65.0 in 1962	10	4.55 in 1972	10	0.20 in 1945

Normal Temperature for November at SRQ = 70.1°

Normal Rainfall for November at SRQ = 1.81 inches

Warmest Autumns		Coolest Autumns		Wettest Autumns		Driest Autumns	
1	79.7 in 2020	1	71.3 in 1976	1	28.46 in 1953	1	3.25 in 2023
	79.7 in 2019	2	72.2 in 1930	2	25.64 in 1962	2	3.64 in 2010
3	78.3 in 2016	3	72.3 in 1943	3	23.66 in 1922	3	4.01 in 1991
4	78.2 in 1986	4	72.5 in 1940	4	23.12 in 1997	4	5.08 in 1942
5	78.0 in 2015	5	72.7 in 1923	5	22.26 in 1912	5	5.44 in 1974
6	77.8 in 2018	6	73.0 in 1981	6	22.01 in 1952	6	5.61 in 2012
7	77.6 in 2024		73.0 in 1944	7	21.30 in 1988	7	5.90 in 2019
8	77.3 in 2007		73.0 in 1937	8	20.43 in 1928	8	5.95 in 1945
9	77.2 in 2023	9	73.1 in 1968	9	20.29 in 1957	9	6.05 in 1944
10	77.1 in 1998		73.1 in 1956	10	19.80 in 1960	10	6.27 in 1984
	77.1 in 1990						

Normal Temperature for Autumn at SRQ = 76.5°

Total Rainfall for Autumn 2024 = *20.22 inches

Normal Rainfall for Autumn at SRQ = 10.57 inches

* Rainfall missing on October 10th during Hurricane Milton

VENICE (records began in May 1955):

Warmest Novembers	Coollest Novembers	Wettest Novembers	Driest Novembers
1 75.8 in 2015	1 64.2 in 2008	1 7.65 in 1997	1 0.00 in 1991
2 74.1 in 1985	2 64.7 in 1962	2 6.02 in 2020	2 0.02 in 2007
3 73.9 in 2022	3 64.9 in 1981	3 5.85 in 1972	3 0.04 in 2001
4 73.6 in 1998	64.9 in 1970	4 5.56 in 1983	4 0.06 in 2016
73.6 in 1994	5 65.1 in 1956	5 5.55 in 1963	5 0.15 in 1960
6 73.5 in 2020	6 65.2 in 1976	6 4.77 in 1957	6 0.20 in 1993
7 72.8 in 2024	7 65.4 in 1968	7 4.46 in 1980	7 0.30 in 1956
8 72.5 in 2013	8 65.8 in 2014	8 4.14 in 1998	8 0.31 in 1978
9 72.3 in 2003	9 66.0 in 1969	9 3.77 in 1968	9 0.32 in 2012
10 72.2 in 1978	10 66.8 in 2021	10 3.72 in 2014	0.32 in 2003
	66.8 in 1966		...
			24 0.81 in 2024

Normal Temperature for November at VNCF1 = 69.9°
Normal Rainfall for November at VNCF1 = 1.54 inches

Warmest Autumns	Coollest Autumns	Wettest Autumns	Driest Autumns
1 78.9 in 2009	1 71.8 in 1976	1 26.44 in 1983	1 3.04 in 1961
2 78.5 in 1998	2 72.1 in 1968	2 25.83 in 1995	2 3.63 in 1981
3 78.4 in 2015	3 72.8 in 2008	3 25.14 in 2022	3 5.24 in 1978
4 78.3 in 2024	72.8 in 1956	4 21.38 in 1997	4 5.68 in 2023
5 78.0 in 2020	5 73.6 in 1974	5 20.89 in 1960	5 5.81 in 2010
6 77.8 in 2018	6 73.7 in 1987	6 20.27 in 1968	6 6.18 in 1964
77.8 in 2013	73.7 in 1981	7 19.23 in 1959	7 6.59 in 1984
77.8 in 1985	73.7 in 1962	8 18.86 in 1982	8 7.16 in 1990
9 77.6 in 2010	9 73.9 in 1977	9 18.67 in 2014	9 7.38 in 2011
10 77.3 in 1994	10 74.0 in 2006	10 18.33 in 1957	10 7.53 in 2019
		...	
		17 16.26 in 2024	

Normal Temperature for Autumn at VNCF1 = 76.0°
Normal Rainfall for Autumn at VNCF1 = 12.05 inches

MYAKKA RIVER STATE PARK (Temperature records began in March 1956
and Rainfall records began in Sep 1943):

Warmest Novembers	Coollest Novembers	Wettest Novembers	Driest Novembers
1 75.8 in 2015	1 62.1 in 1962	1 10.19 in 1997	1 0.00 in 2001
2 75.6 in 1986	2 62.4 in 1969	2 5.55 in 2022	2 0.02 in 1950
3 73.4 in 1998	3 62.8 in 1970	3 5.13 in 1953	3 0.03 in 1991
4 73.2 in 1985	4 63.2 in 1968	4 5.04 in 1947	4 0.07 in 2016
5 72.8 in 2020	5 64.1 in 2008	5 5.01 in 1972	5 0.19 in 2012
6 72.7 in 1958	6 65.3 in 2000	6 4.87 in 1981	6 0.20 in 1944
7 72.3 in 2022	7 65.4 in 2012	7 4.76 in 2020	7 0.30 in 1996
	65.4 in 1963	8 4.73 in 1958	0.30 in 1993
9 72.1 in 2013	9 65.6 in 2021	9 4.52 in 1963	0.30 in 1965
72.1 in 1978	10 65.8 in 1976	10 4.45 in 2002	10 0.37 in 1945

Average Temperature for November 2024 = Not Available Yet
Normal Temperature for November at MKCF1 = 69.1°

Total Rainfall for November 2024 = Not Available Yet
Normal Rainfall for November at MKCF1 = 2.02 inches

Warmest Autumns	Coollest Autumns	Wettest Autumns	Driest Autumns
1 78.5 in 2015	1 71.7 in 1962	1 37.20 in 2022*	1 4.57 in 1961
2 78.3 in 1998	2 72.6 in 1968	2 25.70 in 1962	2 5.85 in 1974
3 78.0 in 2019	3 72.7 in 1976	3 23.65 in 1997	3 6.07 in 2023
78.0 in 2018	4 72.8 in 1963	4 23.43 in 1979	4 6.14 in 1991
5 77.9 in 1986	5 73.4 in 1970	5 21.95 in 2014	5 6.52 in 2008
6 77.8 in 1985	73.4 in 1969	6 21.67 in 1995	6 7.52 in 1970
7 77.7 in 1991	7 73.5 in 2008	7 21.13 in 1953	7 7.57 in 1955
8 77.5 in 2020	8 73.7 in 2000	8 20.63 in 1957	8 8.07 in 2012
9 76.8 in 2009	9 73.8 in 1992	9 20.18 in 2001	9 8.67 in 1950
76.8 in 1990	10 73.9 in 1987	10 19.62 in 1952	10 8.75 in 1996

Average Temperature for Autumn 2024 = Not Available Yet
Normal Temperature for Autumn at MKCF1 = 75.6°

Total Rainfall for Autumn 2024 = Not Available Yet
Normal Rainfall for Autumn at MKCF1 = 13.66 inches

WAUCHULA (records began in January 1933):

Warmest Novembers		Coolest Novembers		Wettest Novembers		Driest Novembers	
1	75.7 in 1986	1	61.9 in 2012	1	11.18 in 1987	1	0.02 in 1940
2	74.6 in 2015	2	62.5 in 2014	2	10.38 in 1997	2	0.03 in 1967
3	74.4 in 1948		62.5 in 1949	3	6.43 in 1953	3	0.08 in 1960
4	73.2 in 1946	4	63.2 in 1962	4	5.89 in 1963	4	0.12 in 1991
5	72.7 in 2020	5	63.4 in 1970	5	4.75 in 1972	5	0.16 in 1974
	72.7 in 1985	6	63.5 in 1956	6	4.41 in 2002	6	0.17 in 2016
7	72.7 in 1958	7	63.8 in 2000	7	4.37 in 2014	7	0.19 in 2012
8	71.9 in 2022	8	63.9 in 1969	8	3.93 in 2010	8	0.23 in 1944
9	71.7 in 1988	9	64.0 in 1950	9	3.91 in 1937	9	0.24 in 1966
10	71.4 in 1978	10	64.4 in 1954	10	3.44 in 1988		0.24 in 1956
	71.4 in 1973			
12	71.1 in 1998			45	1.23 in 2024	44	1.23 in 2024
	71.1 in 1947				1.23 in 1989		1.23 in 1989
14	70.7 in 1964				1.23 in 1971		1.23 in 1971
15	70.6 in 2024						
	70.6 in 1992						
	70.6 in 1982						

Normal Temperature for November at WAUF1 = 67.8°
 Normal Rainfall for November at WAUF1 = 1.96 inches

Warmest Autumns		Coolest Autumns		Wettest Autumns		Driest Autumns	
1	78.1 in 2009	1	71.6 in 2014	1	31.84 in 2022	1	2.12 in 1961
2	77.9 in 2007	2	71.7 in 2012	2	27.02 in 1953	2	3.84 in 1974
3	77.7 in 1985	3	72.0 in 1956	3	23.48 in 1947	3	4.75 in 1967
4	77.6 in 2020	4	72.1 in 1943	4	23.20 in 2024	4	4.92 in 2008
5	77.5 in 2015	5	72.2 in 1954	5	20.13 in 1975	5	5.10 in 1978
6	77.2 in 1941	6	72.5 in 2010	6	20.12 in 1952	6	5.80 in 1991
7	76.9 in 2024		72.5 in 2006	7	19.04 in 1987	7	6.09 in 1976
	76.9 in 2018		72.5 in 1953	8	19.02 in 1960	8	6.10 in 1944
9	76.3 in 1946		72.5 in 1944	9	19.00 in 1997	9	6.32 in 1980
10	76.2 in 1989	10	72.6 in 1976	10	18.33 in 2017	10	6.58 in 2003

Normal Temperature for Autumn at WAUF1 = 74.6°
 Normal Rainfall for Autumn at WAUF1 = 11.37 inches

ARCHBOLD BIO STN (records began in January 1969):

Warmest Novembers		Coolest Novembers		Wettest Novembers		Driest Novembers	
1	76.0 in 2015	1	62.2 in 2008	1	5.94 in 1987	1	0.00 in 2016
2	75.6 in 1986	2	63.1 in 2012	2	5.16 in 1998		0.00 in 2008
3	73.7 in 2020	3	63.2 in 1970	3	4.53 in 2022	3	0.08 in 1986
4	73.3 in 2022	4	64.2 in 1969	4	4.52 in 2002	4	0.12 in 1970
5	72.4 in 1992	5	64.4 in 1981	5	4.46 in 1997	5	0.13 in 1975
6	71.7 in 1985	6	65.1 in 2014	6	4.37 in 1992	6	0.20 in 1996
7	71.6 in 1994	7	65.3 in 2006	7	4.17 in 1977	7	0.21 in 2012
8	71.3 in 1978	8	65.4 in 2000	8	4.16 in 1994	8	0.24 in 2000
	71.3 in 1973	9	66.0 in 1991	9	3.80 in 1988	9	0.29 in 1973
10	71.2 in 2013	10	66.3 in 1997	10	3.78 in 2005	10	0.40 in 2006

Average Temperature for November 1-22, 2024 = 74.0°

Normal Temperature for November at ACHF1 = 68.9°

Total Rainfall for November 1-22, 2024 = 0.44 inches

Normal Rainfall for November at ACHF1 = 1.74 inches

Warmest Autumns		Coolest Autumns		Wettest Autumns		Driest Autumns	
1	78.2 in 2015	1	71.6 in 2008	1	22.87 in 2017	1	4.62 in 1996
2	78.0 in 2020	2	72.5 in 2012	2	22.49 in 1987	2	4.86 in 1990
3	77.4 in 1986	3	72.7 in 2006	3	21.60 in 2022	3	5.52 in 2006
4	76.6 in 2018		72.7 in 2000	4	20.74 in 1969	4	5.96 in 1974
5	76.3 in 2019		72.7 in 1976	5	18.09 in 2014	5	6.01 in 2018
	76.3 in 1985	6	72.8 in 1997	6	17.33 in 1977	6	6.16 in 2010
7	76.2 in 2017	7	73.0 in 1981	7	17.04 in 2001	7	6.27 in 2008
8	76.0 in 2022	8	73.1 in 1970	8	16.98 in 2021	8	6.53 in 1980
9	75.8 in 2023	9	73.2 in 2014	9	16.79 in 1998	9	7.16 in 1984
	75.8 in 2016		73.2 in 1984	10	16.55 in 2016	10	7.36 in 2007
	75.8 in 1973						

Average Temperature for Sep 1 - Nov 25, 2024 = 78.2°

Normal Temperature for Autumn at ACHF1 = 75.1°

Total Rainfall for Sep 1 - Nov 25, 2024 = 15.59 inches

Normal Rainfall for Autumn at ACHF1 = 12.32 inches

PUNTA GORDA AREA (records began in May 1914):

Warmest Novembers		Coolest Novembers		Wettest Novembers		Driest Novembers	
1	78.3 in 1948	1	63.9 in 1917	1	8.02 in 2022	1	0.00 in 1931
2	76.8 in 1986	2	64.2 in 1970	2	6.91 in 2020	2	0.02 in 2012
3	75.9 in 1946		64.2 in 1968	3	5.97 in 1916	3	0.05 in 2016
4	75.5 in 2015	4	65.1 in 2008	4	5.52 in 2002		0.05 in 1990
5	74.3 in 2022	5	65.7 in 1969	5	5.07 in 1987	5	0.07 in 2007
	74.3 in 2020	6	65.8 in 1966	6	4.60 in 2014	6	0.08 in 1940
7	74.2 in 1985	7	66.1 in 1976	7	4.54 in 1965	7	0.09 in 1993
8	74.1 in 1958		66.1 in 1923	8	4.40 in 1972	8	0.10 in 1929
9	73.8 in 1961	9	67.0 in 2012	9	4.31 in 1921	9	0.11 in 1973
10	73.7 in 2024		67.0 in 1939	10	4.16 in 1951	10	0.12 in 1924
			67.0 in 1914	
				62	1.01 in 2024	47	1.01 in 2024
					1.01 in 1967		1.01 in 1967

Normal Temperature for November at PGD = 70.2°

Normal Rainfall for November at PGD = 2.12 inches

Warmest Autumns		Coolest Autumns		Wettest Autumns		Driest Autumns	
1	79.6 in 1948	1	72.4 in 1917	1	31.25 in 1959	1	5.37 in 2008
2	79.5 in 2024	2	73.0 in 1976	2	24.77 in 2022	2	5.75 in 1961
3	79.4 in 1986		73.0 in 1968	3	24.61 in 1922	3	5.87 in 1974
4	79.3 in 2020	4	73.5 in 1923	4	23.01 in 1962	4	5.91 in 1927
5	79.1 in 1946	5	73.7 in 1930	5	21.28 in 1953	5	5.95 in 1973
6	78.7 in 2018	6	73.8 in 1914	6	20.82 in 1995	6	6.00 in 1931
	78.7 in 1985	7	73.9 in 1943	7	20.64 in 1947	7	6.22 in 1991
8	78.2 in 2023		73.9 in 1940	8	20.39 in 1924	8	6.33 in 1970
9	78.1 in 2015	9	74.0 in 1970	9	18.72 in 1929	9	6.62 in 1978
	78.1 in 1947	10	74.1 in 2008	10	18.66 in 1951	10	6.82 in 1920
			74.1 in 1969	
			74.1 in 1966	38	13.35 in 2024	69	13.35 in 2024

Normal Temperature for Autumn at PGD = 76.5°

Normal Rainfall for Autumn at PGD = 12.01 inches

FORT MYERS AREA (records began in January 1902):

Warmest Novembers		Coolest Novembers		Wettest Novembers		Driest Novembers	
1	78.3 in 1986	1	64.1 in 1917	1	8.06 in 1987	1	Trace in 2016
2	76.7 in 2015	2	64.9 in 1910	2	7.58 in 1998		Trace in 2000
3	76.6 in 2022	3	65.4 in 1956	3	5.67 in 2002		Trace in 1944
4	75.6 in 1985	4	65.7 in 1949	4	4.60 in 1921	4	0.01 in 1990
	75.6 in 1948	5	65.9 in 1923	5	4.47 in 2014	5	0.02 in 1950
6	75.4 in 1994	6	66.1 in 1962	6	4.21 in 2020	6	0.03 in 1945
7	75.0 in 1946	7	66.2 in 1969	7	4.11 in 1997	7	0.04 in 1978
8	74.9 in 2020	8	66.3 in 1903	8	3.85 in 1972	8	0.06 in 1905
9	74.2 in 1978	9	66.6 in 1950	9	3.75 in 2005	9	0.08 in 1942
10	74.0 in 2024	10	66.7 in 1976	10	3.71 in 1922	10	0.09 in 2008
	74.0 in 2017		66.7 in 1970	...			0.09 in 2007
	74.0 in 1988			30	2.20 in 2024		0.09 in 1931
					2.20 in 1985		

Normal Temperature for November at FMY = 71.5°

Normal Rainfall for November at FMY = 1.78 inches

Warmest Autumns		Coolest Autumns		Wettest Autumns		Driest Autumns	
1	80.4 in 1986	1	72.5 in 1903	1	32.14 in 1922	1	5.16 in 1988
2	80.2 in 1985	2	72.7 in 1910	2	27.85 in 1969	2	5.95 in 1942
3	79.8 in 2019	3	72.9 in 1976	3	26.80 in 1924	3	5.96 in 1974
4	79.3 in 2022	4	73.7 in 1908	4	23.34 in 1947	4	5.97 in 1907
5	79.1 in 2024	5	73.8 in 1913	5	23.33 in 1953	5	6.11 in 1992
	79.1 in 2020	6	74.0 in 1923	6	22.99 in 1962	6	6.12 in 1906
	79.1 in 2015	7	74.1 in 1953	7	22.36 in 2020	7	6.31 in 2004
8	78.8 in 1979	8	74.3 in 1909	8	21.74 in 1998	8	6.50 in 1966
9	78.7 in 1994	9	74.4 in 1943	9	21.44 in 1952	9	6.67 in 1978
10	78.6 in 2018		74.4 in 1914	10	20.90 in 2011	10	6.78 in 1904
				11	20.85 in 1959		
				12	20.69 in 1985		
				13	20.66 in 1987		
				14	20.44 in 1939		
				15	20.41 in 1921		
				16	20.20 in 2024		

Normal Temperature for Autumn at FMY = 77.2°

Normal Rainfall for Autumn at FMY = 13.86 inches

For more local climate information, please visit our web page at <https://www.weather.gov/tampabay> and look within the "Climate and Past Weather" drop down menu above the map of the area.