



# NOAA - National Weather Service

Tampa Bay Area

2525 14th Avenue SE, Ruskin, Florida 33570

813-645-2323 <https://weather.gov/tampabay>

## November and Autumn (Sep/Oct/Nov) 2022 Climate Summary

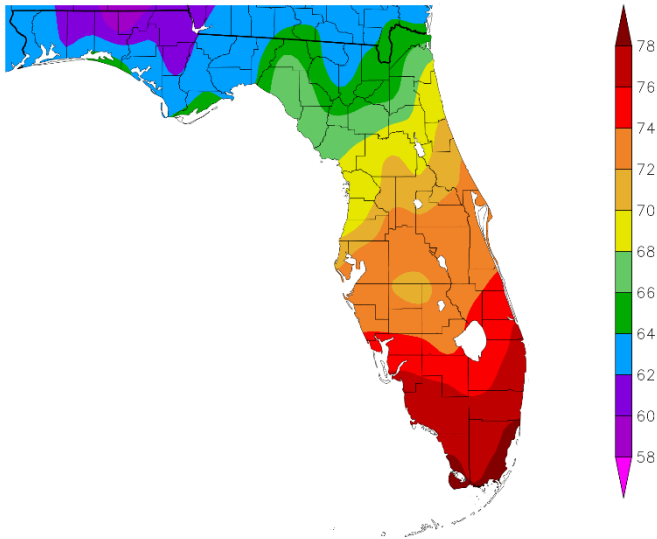
We saw a wide range in our temperatures this November with a couple of cold fronts moving through along with tropical cyclone Nicole which brought some heavy rainfall to parts of the region. Most of these fronts were uneventful bringing just a few showers, but the rainfall from Nicole in many areas was more in one day than we usually see during the entire month of November.

As for November temperatures they averaged about 2 to 5 degrees above normal with only about 6 days that saw temperatures near to below associated with the clouds and rain of Nicole and then a strong cold front around mid-month.

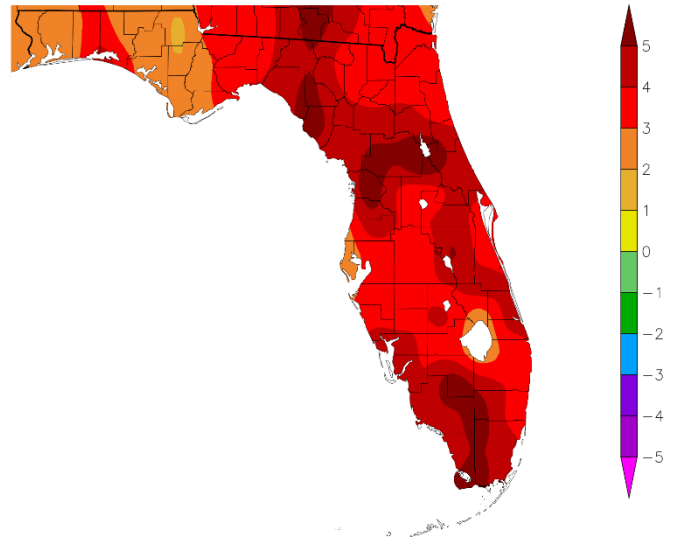
### NOVEMBER TEMPERATURE (°F) :

Location	Rank	November 2022 Avg Temp	Normal Nov Temp	Dep fm Normal	Records Began
Fort Myers Area	3rd Warmest	76.6°	71.5°	+5.1°	Jan 1902
Punta Gorda Area	5th Warmest (tie)	74.3°	70.2°	+4.1°	May 1914
Venice	3rd Warmest	73.9°	69.9°	+4.0°	May 1955
Plant City	6th Warmest	73.8°	69.4°	+4.4°	Sep 1892
Archbold Bio Stn	4th Warmest	73.3°	68.9°	+4.4°	Jan 1969
Sarasota-Bradenton Area	5th Warmest (tie)	73.1°	70.1°	+3.0°	Jan 1911
Tampa Area	8th Warmest	72.6°	69.8°	+2.8°	Apr 1890
Lakeland Area	8th Warmest	72.6°	69.2°	+3.4°	Jan 1915
Winter Haven Area	9th Warmest	72.5°	69.8°	+2.7°	Mar 1941
St Petersburg Area	17th Warmest	72.3°	70.6°	+1.7°	Aug 1914
Bartow	12th Warmest	72.2°	68.3°	+3.9°	Jun 1892
Wauchula 2 N	8th Warmest	71.9°	67.8°	+4.1°	Jan 1933
Brooksville Area	10th Warmest	69.8°	65.1°	+4.7°	Jan 1892
Inverness 3 SE	4th Warmest	69.7°	64.3°	+5.4°	Jul 1948
Tarpon Springs	27th Warmest (tie)	69.7°	67.5°	+2.2°	Jan 1892
St. Leo	24th Warmest (tie)	69.3°	66.8°	+2.5°	Apr 1895
Chiefland 5 ESE	6th Warmest	67.0°	62.7°	+4.3°	Jul 1956

Temperature (F)  
11/1/2022 - 11/30/2022



Departure from Normal Temperature (F)  
11/1/2022 - 11/30/2022



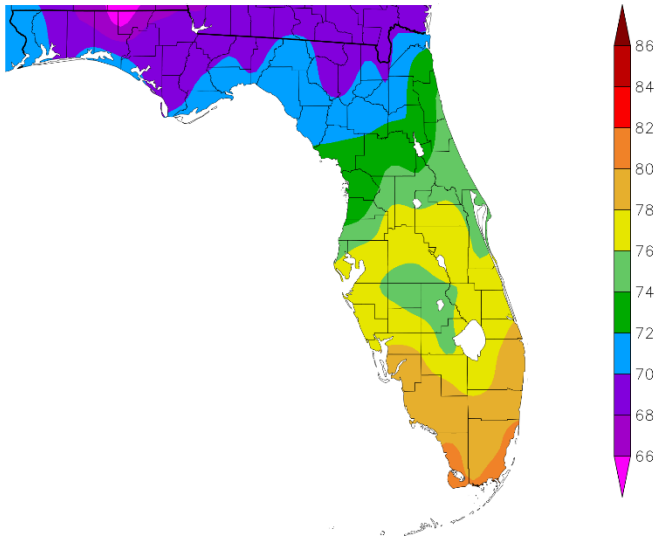
Graphics Source: NOAA Regional Climate Centers

As for Autumn, we had near normal temperatures in September, slightly below average temperatures overall in October, and above normal temperatures in November. This has left the Autumn average temperatures near to slightly above normal.

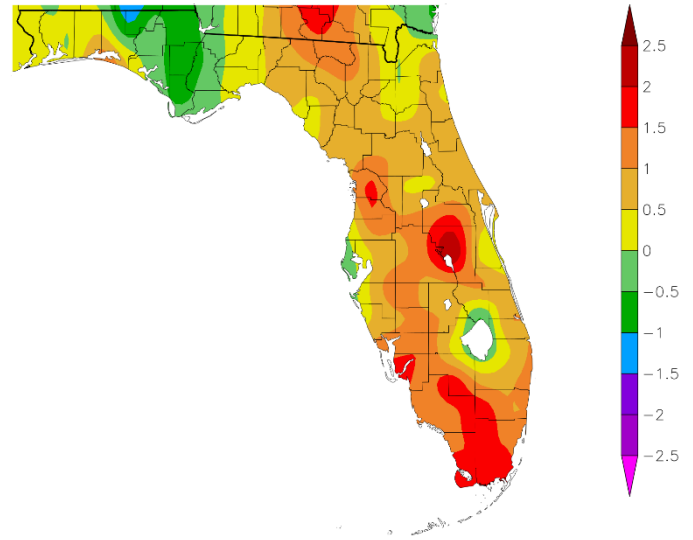
**AUTUMN (SEPTEMBER/OCTOBER/NOVEMBER) TEMPERATURE (°F) :**

Location	Autumn 2022 Rank	Avg Temp	Normal Aut Temp	Dep fm Normal	Records Began
Fort Myers Area	4th Warmest	79.3°	77.2°	+2.1°	Jan 1902
Punta Gorda Area	12th Warmest(tie)	77.6°	76.5°	+1.1°	May 1914
Plant City	6th Warmest(tie)	77.2°	76.1°	+1.1°	Sep 1892
Venice	10th Warmest(tie)	77.0°	76.0°	+1.0°	May 1955
Tampa Area	13th Warmest(tie)	76.9°	76.6°	+0.3°	Apr 1890
St Petersburg Area	66th Coolest(tie)	76.6°	77.0°	-0.4°	Aug 1914
Lakeland Area	14th Warmest	76.3°	75.7°	+0.6°	Jan 1915
Sarasota-Bradenton Area	19th Warmest(tie)	76.2°	76.5°	-0.3°	Jan 1911
Archbold Bio Stn	8th Warmest	76.0°	75.1°	+0.9°	Jan 1969
Bartow	24th Warmest	75.6°	74.8°	+0.8°	Jun 1892
Wauchula 2 N	23rd Warmest(tie)	75.5°	74.6°	+0.9°	Jan 1933
Tarpon Springs	74th Coolest(tie)	74.5°	74.8°	-0.3°	Jan 1892
Brooksville Area	32nd Warmest(tie)	74.0°	72.7°	+1.3°	Jan 1892
Inverness 3 SE	14th Warmest(tie)	73.8°	71.9°	+1.9°	Jul 1948
St. Leo	61st Coolest(tie)	73.5°	73.6°	-0.1°	Apr 1895
Chiefland 5 ESE	19th Warmest(tie)	71.8°	70.9°	+0.9°	Jul 1956

Temperature (F)  
9/1/2022 – 11/30/2022



Departure from Normal Temperature (F)  
9/1/2022 – 11/30/2022

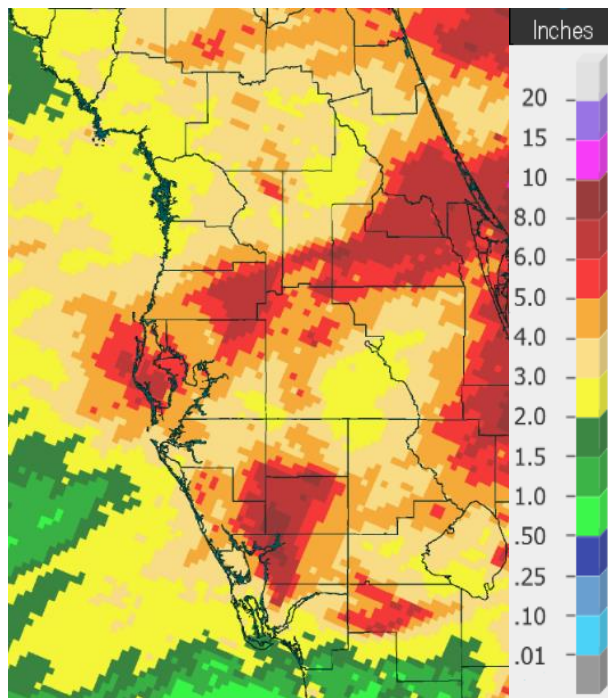


Graphics Source: NOAA Regional Climate Centers

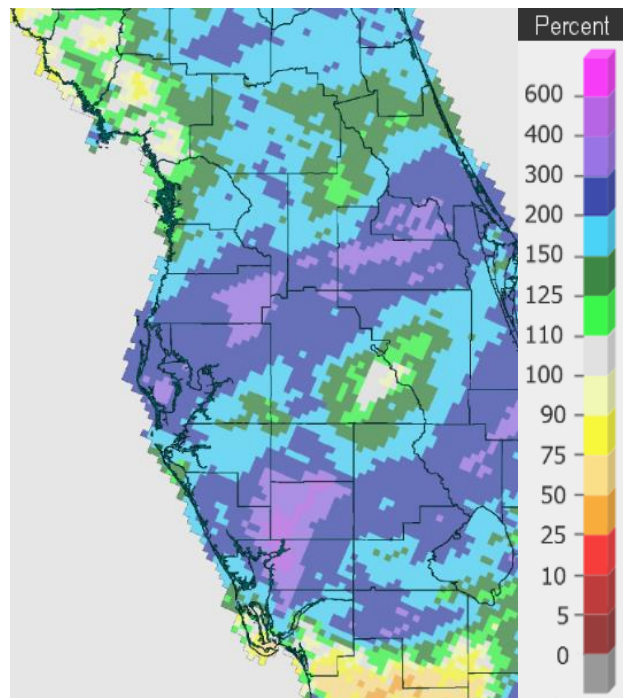
Looking at rainfall, most days in November 2022 were dry, which is pretty typical, but as mentioned earlier there was some heavy rainfall during Nicole early in the month that pushed amounts above normal for many areas with several locations ending up in the Top Ten Wettest for November.

**NOVEMBER RAINFALL (inches):**

Location	November 2022 Rank	November 2022 Rain Total	Normal Nov Rain	Dep fm Normal	Records Began
Punta Gorda Area	1st Wettest	8.02	2.12	+5.90	May 1914
St. Leo	5th Wettest	6.72	1.86	+4.86	Apr 1895
Myakka River State Pk	2nd Wettest	5.55	2.02	+3.53	Sep 1943
Tampa Area	6th Wettest	5.18	1.40	+3.78	Apr 1890
Bartow	7th Wettest	5.18	1.49	+3.69	Jun 1892
Plant City	8th Wettest	4.89	1.76	+3.13	Sep 1892
Archbold Bio Stn	3rd Wettest	4.53	1.74	+2.79	Jan 1969
Lakeland Area	11th Wettest	4.42	1.93	+2.49	Jan 1915
Inverness 3 SE	8th Wettest	4.35	1.83	+2.52	Jul 1948
Tarpon Springs	21st Wettest	3.63	1.90	+1.73	Jan 1892
Venice	11th Wettest	3.49	1.54	+1.95	May 1955
St. Petersburg Area	25th Wettest	2.95	1.46	+1.49	Aug 1914
Sarasota-Bradenton Area	33rd Wettest	2.63	1.81	+0.82	Jan 1911
Chiefland 5 ESE	30th Wettest	2.38	2.22	+0.16	Jul 1956
Fort Myers Area	35th Wettest	1.98	1.78	+0.20	Jan 1902
Wauchula 2 N	55th Driest	1.73	1.96	-0.23	Jan 1933



**Rainfall November 2022**



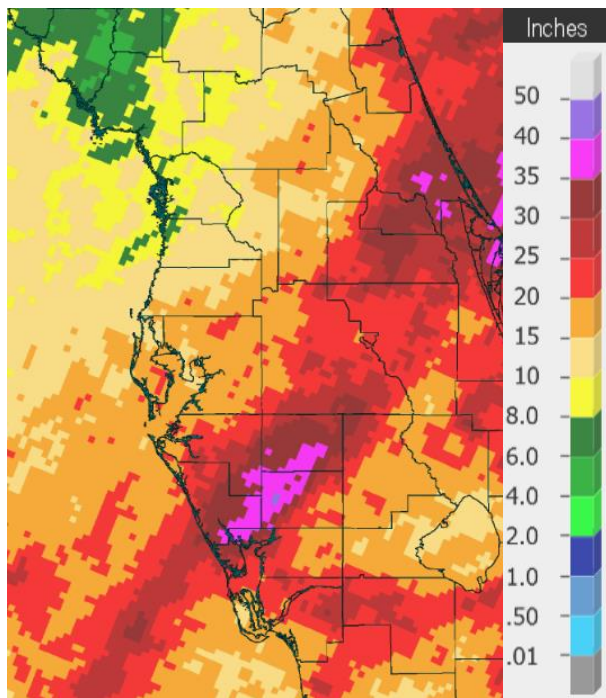
**Percent of Normal**

As for rainfall during Autumn it was somewhat variable with totals ranging from as little as 6 inches to over 25 inches. We saw record rainfall in many spots during September thanks to Ian, then October was dry with some locations in the Top Ten Driest, followed by above normal rainfall in November thanks to Nicole.

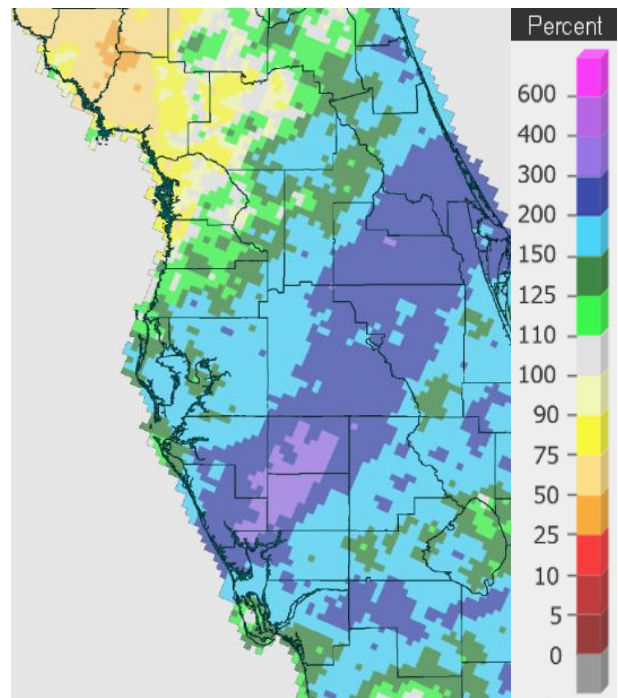
**AUTUMN (SEPTEMBER/OCTOBER/NOVEMBER) RAINFALL (inches):**

Location	Autumn 2022 Rank	Rain Total	Normal Aut Rain	Dep fm Normal	Records Began
Myakka River State Pk	1st Wettest	37.20*	13.66	+23.54	Sep 1943
Wauchula 2 N	1st Wettest	31.84	11.37	+20.47	Jan 1933
Bartow	1st Wettest	31.36	11.83	+19.53	Jun 1892
Venice	3rd Wettest	25.14	12.05	+13.09	May 1955
Punta Gorda Area	2nd Driest	24.77	12.01	+12.76	May 1914
Archbold Bio Stn	3rd Wettest	21.60	12.32	+9.28	Jan 1969
Plant City	6th Wettest	20.48	11.33	+9.15	Sep 1892
Fort Myers Area	17th Wettest	20.02	13.86	+6.16	Jan 1902
Sarasota-Bradenton Area	15th Wettest	18.95	10.57	+8.38	Jan 1911
Lakeland Area	5th Wettest	18.91	12.59	+6.32	Jan 1915
Tampa Area	7th Wettest	18.57	9.83	+8.74	Apr 1890
St. Petersburg Area	22nd Wettest	16.34	10.28	+6.06	Aug 1914
St. Leo	31st Wettest	14.90	11.55	+3.35	Apr 1895
Inverness 3 SE	16th Wettest	14.47	10.56	+3.91	Jul 1948
Tarpon Springs	43rd Wettest	13.35	12.12	+1.23	Jan 1892
Chiefland 5 ESE	7th Driest	6.11	11.21	-5.10	Jul 1956

\*Several days missing in October



**Rainfall Sep 1-Nov 30, 2022**



**Percent of Normal**

On the following pages are tables of the Top Ten Warmest, Coolest, Wettest, and Driest Novembers and Autumns at some official NWS locations, which include the average/total for this November and Autumn where available, and the 1991-2020 Normal (average) temperature and rainfall for November and Autumn.



**CHIEFLAND 5 SE** (records began in July 1956):

Warmest Novembers		Coolest Novembers		Wettest Novembers		Driest Novembers	
1	69.4 in 1985	1	56.6 in 1976	1	7.52 in 1972	1	Trace in 1978
2	69.2 in 1998	2	56.7 in 2008	2	6.47 in 1997	2	0.15 in 2012
3	68.9 in 1986	3	57.3 in 1970	3	6.02 in 1987	3	0.25 in 2016
4	68.6 in 1994	4	58.2 in 1962	4	5.94 in 2002	4	0.33 in 1956
5	67.5 in 1982	5	58.3 in 1968	5	5.25 in 1958	5	0.35 in 1970
<b>6</b>	<b>67.0 in 2022</b>	6	59.2 in 1969	6	4.95 in 1983	6	0.48 in 1998
7	66.9 in 2020	7	59.3 in 2021	7	4.80 in 1963	7	0.61 in 1990
	66.9 in 1973	8	59.4 in 2014	8	4.73 in 2013	8	0.62 in 1991
9	66.5 in 1958	9	59.7 in 1984	9	4.55 in 1981	9	0.66 in 2001
10	66.3 in 1978	10	59.8 in 1963	10	4.50 in 1986	10	0.82 in 1993
				...		...	
				<b>30</b>	<b>2.38 in 2022</b>	<b>36</b>	<b>2.38 in 2022</b>

Normal Temperature for November at CHIF1 = 62.7°  
 Normal Rainfall for November at CHIF1 = 2.22 inches

Warmest Autumns		Coolest Autumns		Wettest Autumns		Driest Autumns	
1	75.2 in 2018	1	67.1 in 1976	1	26.52 in 2004	1	2.05 in 1978
2	75.0 in 2020	2	67.9 in 2008	2	24.26 in 1983	2	3.83 in 2008
3	74.9 in 1998	3	68.7 in 2006	3	20.54 in 1964	3	4.20 in 1961
4	74.2 in 1986	4	68.8 in 1968	4	18.65 in 1959	4	5.13 in 2010
5	73.9 in 1985	5	68.9 in 2000	5	17.59 in 1985	5	5.37 in 1970
6	73.7 in 1959	6	69.1 in 1963	6	16.94 in 1998	6	5.38 in 2003
7	73.4 in 2019		69.1 in 1969	7	16.38 in 1997	<b>7</b>	<b>6.11 in 2022</b>
8	73.0 in 1973	8	69.3 in 1956	8	15.91 in 1960	8	6.24 in 1991
9	72.9 in 2016		69.3 in 1962	9	15.67 in 2002	9	6.61 in 1974
10	72.6 in 1994	10	69.6 in 2010	10	15.26 in 2017	10	6.65 in 2005
...		...					
<b>19</b>	<b>71.8 in 2022</b>	<b>43</b>	<b>71.8 in 2022</b>				
	71.8 in 1992		71.8 in 1992				

Normal Temperature for Autumn at CHIF1 = 70.9°  
 Normal Rainfall for Autumn at CHIF1 = 11.21 inches

**INVERNESS 3 SE** (records began in July 1948):

Warmest Novembers		Coolest Novembers		Wettest Novembers		Driest Novembers	
1	73.1 in 2015	1	59.0 in 1991	1	7.73 in 1980	1	0.00 in 2004
2	71.0 in 2020	2	59.5 in 1976	2	6.40 in 1997		0.00 in 1978
3	70.3 in 1958	3	60.3 in 2002	3	6.21 in 1972	3	0.01 in 2016
<b>4</b>	<b>69.7 in 2022</b>	4	60.5 in 2014	4	5.48 in 1951	4	0.02 in 1950
5	69.3 in 1964	5	60.6 in 1997	5	4.90 in 2015	5	0.07 in 2012
	69.3 in 1978	6	61.0 in 1950	6	4.78 in 2014	6	0.23 in 1993
7	68.8 in 1957	7	61.3 in 2012	7	4.69 in 1988	7	0.25 in 1967
8	68.6 in 1998	8	61.4 in 1995	<b>8</b>	<b>4.35 in 2022</b>	8	0.28 in 1956
9	68.5 in 1973	9	61.6 in 2000	9	3.77 in 2005	9	0.36 in 2001
	68.5 in 1960	10	61.7 in 1949	10	3.70 in 2017	10	0.38 in 1966

Normal Temperature for November at INVF1 = 64.3°  
Normal Rainfall for November at INVF1 = 1.83 inches

---

Warmest Autumns		Coolest Autumns		Wettest Autumns		Driest Autumns	
1	76.8 in 2020	1	68.4 in 1976	1	21.53 in 2017	1	2.08 in 1967
2	76.1 in 2015	2	69.4 in 1997	2	21.34 in 1960	2	2.92 in 1978
3	75.1 in 1958	3	70.2 in 1991	3	21.07 in 1950	3	4.19 in 1961
4	75.0 in 2019	4	70.4 in 2006	4	19.73 in 2021	4	4.56 in 1974
5	74.9 in 1998	5	70.6 in 2000	5	19.55 in 1992	5	4.97 in 2010
	74.9 in 1960	6	70.7 in 1987	6	19.27 in 1997	6	5.13 in 2003
	74.9 in 1959	7	70.8 in 2014	7	18.83 in 2004	7	5.37 in 1954
8	74.2 in 1948	8	71.1 in 1956	8	17.75 in 2016	8	5.47 in 2012
9	74.1 in 2009	9	71.3 in 2002	9	17.32 in 2001	9	5.85 in 2000
	74.1 in 2007	10	71.5 in 1996	10	16.51 in 1988	10	6.14 in 1996
11	73.9 in 2013			11	16.40 in 1979		
	73.9 in 1978			12	15.61 in 1980		
	73.9 in 1961			13	15.06 in 2014		
<b>14</b>	<b>73.8 in 2022</b>			14	14.72 in 1958		
	73.8 in 1965			15	14.52 in 1975		
				<b>16</b>	<b>14.47 in 2022</b>		

Normal Temperature for Autumn at INVF1 = 71.9°  
Normal Rainfall for Autumn at INVF1 = 10.56 inches

**BROOKSVILLE AREA** (records began in January 1892):

Warmest Novembers		Coolest Novembers		Wettest Novembers		Driest Novembers	
1	73.2 in 2015	1	57.5 in 1901	1	9.31 in 1916	1	0.00 in 1967
2	72.7 in 1948	2	60.3 in 2008	2	9.17 in 1987	2	Trace in 2016
3	72.6 in 1946	3	60.5 in 1892	3	8.30 in 1951		Trace in 1931
4	71.0 in 2020	4	60.8 in 2014	4	7.08 in 2014	4	0.01 in 1978
	71.0 in 1958	5	61.1 in 1923	5	6.64 in 1937	5	0.05 in 1928
6	70.7 in 1994	6	61.3 in 2000	6	6.56 in 1980	6	0.12 in 2001
7	70.5 in 1973	7	61.4 in 2012	7	6.28 in 1999	7	0.15 in 1913
	70.5 in 1896		61.4 in 1917	8	6.14 in 1972	8	0.18 in 1940
9	70.1 in 1905	9	61.8 in 2002	9	5.49 in 1932	9	0.22 in 1956
<b>10</b>	<b>69.8 in 2022</b>	10	61.9 in 1962	10	5.14 in 1988		0.22 in 1924
	69.8 in 1988				5.14 in 1920		0.22 in 1900
	69.8 in 1929						

Normal Temperature for November at BKV = 65.1°

Total Rainfall for November 2022 = Not Available, several days missing

Normal Rainfall for November at BKV = 1.59 inches

-----

Warmest Autumns		Coolest Autumns		Wettest Autumns		Driest Autumns	
1	76.6 in 2020	1	69.3 in 1892	1	27.84 in 1950	1	2.30 in 1903
2	76.0 in 1911	2	69.5 in 1901	2	24.74 in 1912	2	3.58 in 2008
3	75.9 in 2015	3	70.2 in 1920	3	22.68 in 1894		3.58 in 1978
4	75.7 in 1905	4	70.3 in 2008	4	21.62 in 1947	4	3.87 in 1967
5	75.4 in 1941	5	70.4 in 1923	5	21.50 in 1922	5	3.97 in 1909
	75.4 in 1919	6	70.5 in 2000	6	21.46 in 1995	6	4.10 in 2010
	75.4 in 1915	7	70.8 in 2006	7	21.24 in 1921	7	4.58 in 1940
8	75.3 in 1946	8	70.9 in 2014	8	20.56 in 1938	8	4.61 in 1991
	75.3 in 1927		70.9 in 1894	9	20.36 in 1911	9	5.37 in 2015
10	75.2 in 2018	10	71.0 in 1953	10	19.88 in 1988	10	5.61 in 1961
	75.2 in 1973						
...		...					
<b>32</b>	<b>74.0 in 2022</b>	<b>70</b>	<b>74.0 in 2022</b>				
	74.0 in 1925		74.0 in 1925				

Normal Temperature for Autumn at BKV = 72.7°

Total Rainfall for Autumn 2022 = Not Available, several days missing

Normal Rainfall for Autumn at BKV = 10.17 inches

-----



**ST LEO** (records began in April 1895):

Warmest Novembers	Coollest Novembers	Wettest Novembers	Driest Novembers
1 75.1 in 1986	1 60.8 in 1917	1 12.48 in 1988	1 Trace in 1960
2 73.6 in 1985	2 61.3 in 1901	2 8.34 in 1951	2 0.02 in 1978
3 73.2 in 1946	3 61.7 in 1910	3 7.36 in 1987	3 0.03 in 1931
4 73.1 in 1948	4 62.2 in 1930	4 7.21 in 2014	0.03 in 1928
5 72.0 in 1998	5 62.3 in 2014	<b>5 6.72 in 2022</b>	5 0.06 in 2016
6 71.8 in 2015	6 62.5 in 1923	6 6.22 in 1916	6 0.08 in 2012
71.8 in 1994	7 62.6 in 1970	7 6.12 in 1963	7 0.21 in 1993
8 71.5 in 1982	8 62.8 in 1933	8 6.06 in 1972	8 0.22 in 1940
9 71.4 in 1958	62.8 in 1932	9 5.84 in 1911	9 0.23 in 1913
10 71.3 in 2020	62.8 in 1904	10 5.61 in 1918	10 0.26 in 1945
71.3 in 1978			
...	...		
<b>24 69.3 in 2022</b>			

Normal Temperature for November at STLF1 = 66.8°  
 Normal Rainfall for November at STLF1 = 1.86 inches

-----

Warmest Autumns	Coollest Autumns	Wettest Autumns	Driest Autumns
1 77.9 in 1985	1 69.8 in 1917	1 25.80 in 1988	1 1.52 in 1978
2 77.4 in 1986	2 70.1 in 1903	2 25.13 in 1912	2 3.19 in 1940
3 76.5 in 2020	3 70.2 in 1930	3 24.60 in 1922	3 3.56 in 2010
76.5 in 1998	4 70.7 in 1920	4 22.73 in 1953	4 3.81 in 1909
5 76.4 in 2007	5 71.0 in 1976	5 21.77 in 1997	5 4.14 in 1967
6 76.2 in 1946	71.0 in 1923	6 21.48 in 1982	6 4.76 in 1991
7 76.1 in 2009	7 71.1 in 1910	7 21.40 in 1950	7 5.09 in 2008
76.1 in 1941	8 71.4 in 1943	8 21.29 in 1921	8 5.11 in 2018
9 75.9 in 2004	9 71.5 in 2014	9 20.71 in 1949	9 5.33 in 1931
10 75.8 in 2018	10 71.8 in 1956	10 20.35 in 2004	10 5.63 in 1961
75.8 in 2003	71.8 in 1922	...	...
...	...	<b>31 14.90 in 2022</b>	<b>98 14.90 in 2022</b>
<b>62 73.5 in 2022</b>	<b>61 73.5 in 2022</b>		
73.5 in 2021	73.5 in 2021		
73.5 in 1963	73.5 in 1963		
73.5 in 1955	73.5 in 1955		
73.5 in 1906	73.5 in 1906		

Normal Temperature for Autumn at STLF1= 73.6°  
 Normal Rainfall for Autumn at STLF1 = 11.55 inches

-----

**TARPON SPRINGS** (records began in January 1892):

Warmest Novembers		Coolest Novembers		Wettest Novembers		Driest Novembers	
1	75.9 in 1986	1	59.6 in 2004	1	9.13 in 1988	1	0.00 in 2016
2	74.4 in 1985	2	60.0 in 1901	2	8.18 in 1916	2	Trace in 1939
3	74.3 in 1946	3	61.5 in 1917	3	6.99 in 1997		Trace in 1931
4	73.5 in 2015	4	61.7 in 1962	4	6.63 in 1992	4	0.02 in 1978
5	72.6 in 1994		61.7 in 1892	5	6.09 in 2014	5	0.06 in 1933
6	72.3 in 1998	6	61.9 in 1910	6	5.80 in 1963	6	0.08 in 1942
7	71.8 in 2003	7	62.5 in 1904	7	5.57 in 1920	7	0.09 in 1940
8	71.6 in 1896	8	62.6 in 2014	8	5.49 in 2020		0.09 in 1928
9	71.4 in 1982		62.6 in 1970	9	5.19 in 1955	9	0.10 in 1930
10	71.3 in 1929	10	63.0 in 1976	10	5.18 in 1896	10	0.13 in 1924
	71.3 in 1919		63.0 in 1912	...			
...				<b>21</b>	<b>3.63 in 2022</b>		
<b>27</b>	<b>69.7 in 2022</b>						
	69.7 in 2005						

Normal Temperature for November at TRPF1 = 67.5°

Normal Rainfall for November at TRPF1 = 1.90 inches

-----

Warmest Autumns		Coolest Autumns		Wettest Autumns		Driest Autumns	
1	78.1 in 1985	1	70.8 in 1917	1	28.87 in 1911	1	1.85 in 2005
2	78.0 in 1986		70.8 in 1892	2	28.34 in 1988	2	3.33 in 1978
3	77.9 in 1919	3	71.4 in 1903	3	24.31 in 2014	3	3.44 in 1967
4	77.6 in 2018	4	71.5 in 1976	4	22.25 in 1997	4	4.62 in 2008
5	76.8 in 2020	5	71.7 in 1967	5	21.71 in 1983	5	4.85 in 2010
	76.8 in 1946		71.7 in 1901	6	21.70 in 1912	6	4.86 in 1927
7	76.7 in 2015	7	71.9 in 1963	7	21.43 in 1975	7	5.57 in 1909
	76.7 in 1994		71.9 in 1962	8	20.78 in 1995	8	5.74 in 1930
9	76.6 in 2019		71.9 in 1940		20.78 in 1959	9	5.99 in 1981
	76.6 in 1998		71.9 in 1904	10	20.60 in 1971	10	6.37 in 1961
			71.9 in 1899				6.37 in 1933
...		...		...		...	
<b>50</b>	<b>74.5 in 2022</b>	<b>74</b>	<b>74.5 in 2022</b>	<b>43</b>	<b>13.35 in 2022</b>	<b>88</b>	<b>13.35 in 2022</b>
	74.5 in 1972		74.5 in 1972				
	74.5 in 1961		74.5 in 1961				
	74.5 in 1928		74.5 in 1928				
	74.5 in 1926		74.5 in 1926				

Normal Temperature for Autumn at TRPF1 = 74.8°

Normal Rainfall for Autumn at TRPF1 = 12.12 inches

**TAMPA AREA** (records began in April 1890):

Warmest Novembers		Coolest Novembers		Wettest Novembers		Driest Novembers	
1	76.3 in 1986	1	61.4 in 1901	1	6.12 in 1963	1	Trace in 1960
2	76.2 in 2015	2	61.9 in 1970	2	5.97 in 1988	2	0.01 in 2016
3	74.6 in 2020	3	62.3 in 1968	3	5.40 in 2020		0.01 in 1978
4	73.7 in 1946	4	62.5 in 1962	4	5.38 in 1944	4	0.04 in 1931
5	73.6 in 1948	5	62.8 in 1976	5	5.26 in 2014	5	0.05 in 1928
	73.6 in 1985	6	62.9 in 1969	6	<b>5.18 in 2022</b>	6	0.08 in 1927
7	72.7 in 1958		62.9 in 1917	7	4.89 in 1953	7	0.10 in 2001
<b>8</b>	<b>72.6 in 2022</b>	8	63.3 in 1910	8	4.85 in 1925		0.10 in 1942
9	72.5 in 1998	9	63.4 in 1923	9	4.75 in 1941	9	0.11 in 2007
10	72.3 in 1994	10	63.7 in 1949	10	4.36 in 1987	10	0.12 in 2017
							0.12 in 1974

Normal Temperature for November at TPA = 69.8°

Normal Rainfall for November at TPA = 1.40 inches

-----

Warmest Autumns		Coolest Autumns		Wettest Autumns		Driest Autumns	
1	79.7 in 2020	1	71.0 in 1976	1	24.38 in 1894	1	3.19 in 2010
2	79.0 in 2015	2	71.6 in 1903	2	22.83 in 1912	2	3.30 in 1909
3	78.9 in 2018		71.6 in 1891	3	20.45 in 1997	3	3.62 in 1961
4	78.4 in 1986	4	71.7 in 1968	4	19.80 in 1922	4	4.06 in 1942
5	78.1 in 2019	5	71.8 in 1917	5	19.62 in 1988	5	4.21 in 1940
6	77.9 in 2017		71.8 in 1901	6	19.07 in 1947	6	4.25 in 1913
7	77.8 in 1985	7	71.9 in 1923	<b>7</b>	<b>18.57 in 2022</b>	7	4.35 in 1974
8	77.7 in 2016	8	72.2 in 1892	8	18.15 in 1953	8	5.07 in 1967
9	77.5 in 1919	9	72.3 in 1962	9	17.60 in 1890	9	5.22 in 1984
10	77.3 in 2021	10	72.4 in 1956	10	16.58 in 1911	10	5.33 in 2003
11	77.2 in 1998		72.4 in 1910				
12	77.0 in 2007						
<b>13</b>	<b>76.9 in 2022</b>						
	76.9 in 1990						
	76.9 in 1941						

Normal Temperature for Autumn at TPA = 76.6°

Normal Rainfall for Autumn at TPA = 9.83 inches

-----

**ST PETERSBURG** (records began in August 1914):

Warmest Novembers		Coolest Novembers		Wettest Novembers		Driest Novembers	
1	77.4 in 1986	1	63.9 in 1917	1	6.94 in 1988	1	0.00 in 1931
2	76.3 in 1985	2	64.3 in 1962	2	6.85 in 1953	2	0.02 in 1960
3	74.9 in 2015	3	64.7 in 1949	3	6.80 in 1987	3	0.03 in 2016
4	74.8 in 1946	4	65.1 in 1976	4	6.18 in 2020		0.03 in 1942
5	74.5 in 1948	5	65.2 in 1995	5	6.04 in 1963	5	0.04 in 2001
6	74.3 in 2020		65.2 in 1951	6	5.71 in 1916	6	0.10 in 1978
7	73.8 in 2005	7	65.3 in 1950	7	5.63 in 1925	7	0.12 in 1974
8	73.7 in 1978	8	65.4 in 1954	8	5.08 in 1954	8	0.14 in 1930
9	73.5 in 1958	9	65.7 in 1956	9	5.03 in 1968	9	0.15 in 1928
10	72.9 in 1994		65.7 in 1923	10	5.02 in 1915	10	0.18 in 1946
	72.9 in 1929			...		...	
12	72.6 in 2004			<b>25</b>	<b>2.95 in 2022</b>	<b>85</b>	<b>2.95 in 2022</b>
	72.6 in 1973						
14	72.5 in 2003						
	72.5 in 1942						
16	72.4 in 2013						
<b>17</b>	<b>72.3 in 2022</b>						

Normal Temperature for November at SPG = 70.6°

Normal Rainfall for November at SPG = 1.46 inches

-----

Warmest Autumns		Coolest Autumns		Wettest Autumns		Driest Autumns	
1	80.0 in 1985	1	72.6 in 1917	1	32.75 in 1988	1	2.13 in 2010
2	79.9 in 1986	2	73.2 in 1956	2	30.04 in 1953	2	4.00 in 1990
3	79.8 in 2005	3	73.4 in 1952	3	26.31 in 1986	3	4.49 in 1967
4	79.3 in 2020	4	73.5 in 1954	4	26.30 in 1952	4	4.69 in 2008
5	79.1 in 2015		73.5 in 1953	5	21.83 in 1997	5	4.84 in 1964
6	79.0 in 2018	6	73.6 in 1976	6	21.06 in 1922	6	5.01 in 1940
7	78.9 in 2019		73.6 in 1962	7	20.14 in 1954	7	5.52 in 1927
8	78.4 in 2013		73.6 in 1923	8	19.12 in 1918	8	5.61 in 1966
	78.4 in 1941	9	73.7 in 1943	9	19.07 in 2001	9	5.73 in 1965
10	78.3 in 2010	10	73.9 in 1950	10	18.52 in 1959	10	6.14 in 1939
	78.3 in 1919			...			
...		...		<b>22</b>	<b>16.34 in 2022</b>		
<b>31</b>	<b>76.6 in 2022</b>	<b>66</b>	<b>76.6 in 2022</b>				
	76.6 in 1994		76.6 in 1994				
	76.6 in 1959		76.6 in 1959				
	76.6 in 1927		76.6 in 1927				

Normal Temperature for Autumn at SPG = 77.0°

Normal Rainfall for Autumn at SPG = 10.28 inches

-----

**PLANT CITY** (records began in September 1892):

Warmest Novembers		Coolest Novembers		Wettest Novembers		Driest Novembers	
1	75.7 in 1986	1	61.8 in 1932	1	7.88 in 1953	1	0.00 in 1960
2	74.6 in 2015	2	62.0 in 1930	2	7.34 in 1988		0.00 in 1931
3	74.3 in 1948	3	62.1 in 1917	3	6.89 in 2020		0.00 in 1905
4	74.2 in 2020	4	62.4 in 1933	4	6.75 in 2014	4	0.01 in 2007
5	73.9 in 1946	5	62.6 in 1904	5	6.46 in 1963	5	0.05 in 2012
<b>6</b>	<b>73.8 in 2022</b>	6	62.9 in 1912	6	5.90 in 1918	6	0.10 in 1928
7	72.7 in 1985	7	63.1 in 2014	7	5.56 in 1971		0.10 in 1924
8	72.5 in 1896	8	63.3 in 1962	<b>8</b>	<b>4.89 in 2022</b>	8	0.13 in 1940
9	72.3 in 1994		63.3 in 1949	9	4.63 in 1980	9	0.15 in 2017
	72.3 in 1958	10	63.4 in 1926	10	4.52 in 1987		0.15 in 1978

Normal Temperature for November at PLCF1 = 69.4°

Normal Rainfall for November at PLCF1 = 1.76 inches

-----

Warmest Autumns		Coolest Autumns		Wettest Autumns		Driest Autumns	
1	79.6 in 2020	1	70.4 in 1930	1	25.05 in 1947	1	1.89 in 1909
2	78.4 in 2018	2	70.8 in 1932	2	23.20 in 1894	2	1.99 in 1961
3	78.3 in 2019	3	71.2 in 1940	3	23.04 in 1988	3	3.56 in 1940
4	77.9 in 1986	4	71.5 in 2000	4	21.72 in 1953	4	4.08 in 1991
5	77.4 in 2015	5	71.6 in 1976	5	20.54 in 2020	5	4.29 in 1927
<b>6</b>	<b>77.2 in 2022</b>	6	71.7 in 1943	<b>6</b>	<b>20.48 in 2022</b>	6	4.41 in 1990
	77.2 in 1985	7	72.0 in 1937	7	20.36 in 2014	7	4.55 in 2010
8	76.4 in 1946		72.0 in 1909	8	20.15 in 2004	8	4.57 in 1939
9	76.2 in 2021	9	72.2 in 1968	9	20.06 in 1998	9	4.63 in 1967
10	76.0 in 2016	10	72.4 in 1926	10	19.92 in 1959	10	4.67 in 2008

Normal Temperature for Autumn at PLCF1 = 76.1°

Normal Rainfall for Autumn at PLCF1 = 11.33 inches

-----

**LAKELAND AREA** (records began in January 1915):

Warmest Novembers	Coollest Novembers	Wettest Novembers	Driest Novembers
1 76.9 in 1986	1 62.6 in 1970	1 7.56 in 2014	1 0.00 in 1924
2 75.4 in 2015	2 62.9 in 1962	2 7.19 in 1988	2 Trace in 2016
3 73.4 in 1985	3 63.0 in 1969	3 6.08 in 1987	Trace in 1960
4 73.3 in 1994	4 63.4 in 1949	4 5.94 in 1941	Trace in 1917
73.3 in 1948	5 63.5 in 1976	5 5.80 in 2020	5 0.03 in 1931
6 73.1 in 1946	63.5 in 1951	6 5.71 in 1963	6 0.05 in 1928
7 73.0 in 2020	63.5 in 1950	7 5.54 in 1980	7 0.07 in 1950
<b>8 72.6 in 2022</b>	8 63.7 in 1968	8 5.37 in 1953	8 0.08 in 2012
9 71.6 in 2003	9 63.9 in 2008	9 4.59 in 2018	9 0.10 in 1991
71.6 in 1988	10 64.0 in 1923	10 4.48 in 1997	10 0.11 in 1940
		<b>11 4.42 in 2022</b>	

Normal Temperature for November at LLDF1 = 69.2°

Normal Rainfall for November at LLDF1 = 1.93 inches

-----

Warmest Autumns	Coollest Autumns	Wettest Autumns	Driest Autumns
1 79.2 in 1986	1 71.5 in 1976	1 22.45 in 2014	1 2.99 in 1961
2 78.6 in 2020	2 72.1 in 1943	2 21.46 in 2004	2 3.21 in 1940
3 78.3 in 2015	3 72.2 in 1923	3 19.78 in 1947	3 4.16 in 1942
4 78.1 in 1985	4 72.3 in 2006	4 19.52 in 1918	4 4.25 in 1927
5 78.0 in 2018	72.3 in 1968	<b>5 18.91 in 2022</b>	5 4.28 in 1934
6 77.4 in 2019	72.3 in 1956	6 18.47 in 1998	6 4.58 in 2010
7 77.0 in 1994	7 72.4 in 1967	7 18.39 in 1929	7 4.69 in 2008
8 76.8 in 2009	8 72.5 in 1940	8 18.29 in 1953	8 5.01 in 1967
9 76.7 in 1990	9 72.6 in 1954	9 17.36 in 1997	9 5.12 in 1978
10 76.6 in 2017	10 72.7 in 1962	10 17.09 in 1989	10 5.35 in 1974
11 76.4 in 1998	72.7 in 1953		
76.4 in 1993	72.7 in 1924		
76.4 in 1941			
<b>14 76.3 in 2022</b>			

Normal Temperature for Autumn at LLDF1 = 75.7°

Normal Rainfall for Autumn at LLDF1 = 12.59 inches

-----



**WINTER HAVEN AREA** (records began in January 1941):

Warmest Novembers	Coollest Novembers	Wettest Novembers	Driest Novembers
1 76.8 in 1986	1 63.1 in 1962	1 7.81 in 1988	1 0.00 in 1960
2 75.6 in 1948	2 63.2 in 1970	2 7.13 in 1987	0.00 in 1950
3 75.1 in 2015	3 63.9 in 2008	3 6.76 in 1953	3 Trace in 2011
4 74.9 in 1985	63.9 in 1968	4 6.27 in 1963	4 0.01 in 2012
5 74.5 in 1946	5 64.1 in 1976	5 5.32 in 1994	5 0.07 in 2016
6 73.5 in 2020	6 64.5 in 1949	6 5.21 in 1980	6 0.13 in 1966
7 73.1 in 1994	7 64.6 in 1969	7 4.94 in 1951	7 0.16 in 1942
8 72.6 in 1988	8 64.7 in 1981	8 4.07 in 1995	8 0.19 in 1985
<b>9 72.5 in 2022</b>	9 64.9 in 1950	9 4.00 in 2020	9 0.20 in 2017
10 72.4 in 1958	10 65.0 in 2012	10 3.97 in 1968	0.20 in 1991
	65.0 in 1951		0.20 in 1967

Normal Temperature for November at GIF = 69.8°

Total Rainfall for November 2022 = A couple of days missing

Normal Rainfall for November at GIF = 1.45 inches

-----

Warmest Autumns	Coollest Autumns	Wettest Autumns	Driest Autumns
1 79.2 in 2020	1 71.8 in 1976	1 21.86 in 1987	1 2.72 in 1961
2 79.1 in 2018	2 72.2 in 1968	2 20.61 in 1947	2 3.11 in 2009
3 79.0 in 1986	3 72.5 in 1962	3 20.57 in 1953	3 4.27 in 1967
4 78.7 in 2019	4 73.0 in 1963	4 20.35 in 1960	4 4.29 in 2008
5 78.4 in 1985	5 73.2 in 2006	5 18.82 in 1959	5 4.91 in 1985
6 78.0 in 2015	6 73.3 in 2008	6 18.11 in 1950	6 5.14 in 1942
7 77.2 in 1998	73.3 in 1981	7 17.84 in 2014	7 5.44 in 1978
77.2 in 1989	73.3 in 1953	8 17.59 in 2001	8 5.54 in 2006
77.2 in 1946	9 73.4 in 1943	9 17.16 in 1988	9 5.78 in 1990
77.2 in 1941	10 73.5 in 2000	10 16.36 in 2020	10 5.87 in 2015

Average Temperature for Autumn 2022 = Many days missing/unrepresentative

Normal Temperature for Autumn at GIF = 76.4°

Total Rainfall for Autumn 2022 = Many days missing

Normal Rainfall for Autumn at GIF = 8.98 inches

-----

**BARTOW** (records began in June 1892):

Warmest Novembers	Coollest Novembers	Wettest Novembers	Driest Novembers
1 76.4 in 1986	1 60.9 in 1917	1 7.40 in 1987	1 0.00 in 2016
2 75.3 in 2015	2 61.5 in 1970	2 7.36 in 2002	0.00 in 1960
3 74.5 in 1948	3 62.0 in 1910	3 6.52 in 1963	3 0.02 in 1931
4 73.6 in 2013	4 62.3 in 1901	4 6.33 in 1988	4 0.04 in 1966
73.6 in 1985	5 62.6 in 1904	5 5.97 in 1953	0.04 in 1928
6 73.5 in 1946	62.6 in 1892	6 5.80 in 1951	6 0.05 in 2012
7 73.0 in 1994	7 62.9 in 1962	<b>7 5.18 in 2022</b>	7 0.06 in 1950
8 72.9 in 1958	8 63.5 in 2008	8 4.75 in 1911	8 0.09 in 1923
9 72.5 in 2020	63.5 in 1912	9 4.71 in 1937	9 0.10 in 2007
72.5 in 1998	10 63.6 in 1939	10 4.68 in 2015	0.10 in 1974
11 72.3 in 2003			
<b>12 72.2 in 2022</b>			

Normal Temperature for November at BARF1 = 68.3°  
Normal Rainfall for November at BARF1 = 1.49 inches

---

Warmest Autumns	Coollest Autumns	Wettest Autumns	Driest Autumns
1 77.8 in 2020	1 71.0 in 1894	<b>1 31.36 in 2022</b>	1 3.71 in 1942
77.8 in 2015	2 71.1 in 1892	2 26.99 in 1894	2 4.88 in 2010
3 77.2 in 1998	3 71.4 in 1917	3 21.30 in 1947	3 5.00 in 1940
4 77.1 in 2018	4 71.8 in 1976	4 20.97 in 1917	4 5.02 in 1990
5 76.9 in 2009	5 72.1 in 1895	5 20.77 in 1922	5 5.25 in 1961
6 76.8 in 1946	6 72.3 in 1914	6 20.38 in 1959	6 5.26 in 1939
76.8 in 1919	7 72.4 in 1970	7 20.31 in 1982	7 5.29 in 1984
8 76.5 in 2019	8 72.5 in 1904	8 19.77 in 1953	8 5.47 in 1974
76.5 in 1958	9 72.8 in 1967	9 19.43 in 1902	9 5.57 in 1906
10 76.4 in 1994	72.8 in 1963	10 19.30 in 1960	10 5.90 in 1927
...	72.8 in 1935		
<b>24 75.6 in 2022</b>			

Normal Temperature for Autumn at BARF1 = 74.8°  
Normal Rainfall for Autumn at BARF1 = 11.83 inches

**SARASOTA-BRADENTON AREA** (records began in January 1911):

Warmest Novembers	Coollest Novembers	Wettest Novembers	Driest Novembers
1 76.1 in 1986	1 63.2 in 1917	1 9.40 in 1997	1 0.00 in 1931
2 75.4 in 2015	2 63.5 in 1949	2 7.62 in 2020	2 Trace in 1940
3 74.7 in 2020	63.5 in 1923	3 6.81 in 1920	Trace in 1928
4 73.2 in 1948	4 64.2 in 1976	4 6.24 in 1925	4 0.02 in 2016
<b>5 73.1 in 2022</b>	5 64.5 in 2008	5 5.68 in 1953	5 0.06 in 2001
73.1 in 1958	6 64.6 in 2014	6 5.18 in 1941	0.06 in 1991
7 72.7 in 1994	64.6 in 1981	7 5.15 in 1988	7 0.09 in 1930
8 72.4 in 1985	8 64.7 in 1968	8 4.94 in 1918	8 0.16 in 2007
9 72.2 in 2013	9 64.8 in 1933	9 4.69 in 2002	9 0.20 in 1945
10 72.1 in 1998	10 65.0 in 1962	10 4.55 in 1972	10 0.21 in 1978
72.1 in 1946			0.21 in 1950
		...	...
		<b>33 2.63 in 2022</b>	<b>78 2.63 in 2022</b>

Normal Temperature for November at SRQ = 70.1°  
 Normal Rainfall for November at SRQ = 1.81 inches

-----

Warmest Autumns	Coollest Autumns	Wettest Autumns	Driest Autumns
1 79.7 in 2020	1 71.3 in 1976	1 28.46 in 1953	1 3.64 in 2010
79.7 in 2019	2 72.2 in 1930	2 25.64 in 1962	2 4.01 in 1991
3 78.3 in 2016	3 72.3 in 1943	3 23.66 in 1922	3 5.08 in 1942
4 78.2 in 1986	4 72.5 in 1940	4 23.12 in 1997	4 5.44 in 1974
5 78.0 in 2015	5 72.7 in 1923	5 22.26 in 1912	5 5.61 in 2012
6 77.8 in 2018	6 73.0 in 1981	6 22.01 in 1952	6 5.90 in 2019
7 77.3 in 2007	73.0 in 1944	7 21.30 in 1988	7 5.95 in 1945
8 77.1 in 1998	73.0 in 1937	8 20.43 in 1928	8 6.05 in 1944
77.1 in 1990	9 73.1 in 1968	9 20.29 in 1957	9 6.27 in 1984
10 77.0 in 2013	73.1 in 1956	10 19.80 in 1960	10 6.42 in 1930
...		11 19.60 in 1947	
<b>19 76.2 in 2022</b>		12 19.53 in 1926	
76.2 in 2021		13 19.21 in 2020	
76.2 in 2003		14 19.10 in 2014	
76.2 in 1993		<b>15 18.95 in 2022</b>	

Normal Temperature for Autumn at SRQ = 76.5°  
 Normal Rainfall for Autumn at SRQ = 10.57 inches

-----

**VENICE** (records began in May 1955):

Warmest Novembers	Coollest Novembers	Wettest Novembers	Driest Novembers
1 75.8 in 2015	1 64.2 in 2008	1 7.65 in 1997	1 0.00 in 1991
2 74.1 in 1985	2 64.7 in 1962	2 6.02 in 2020	2 0.02 in 2007
<b>3 73.9 in 2022</b>	3 64.9 in 1981	3 5.85 in 1972	3 0.04 in 2001
4 73.6 in 1998	64.9 in 1970	4 5.56 in 1983	4 0.06 in 2016
73.6 in 1994	5 65.1 in 1956	5 5.55 in 1963	5 0.15 in 1960
6 73.5 in 2020	6 65.2 in 1976	6 4.77 in 1957	6 0.20 in 1993
7 72.5 in 2013	7 65.4 in 1968	7 4.46 in 1980	7 0.30 in 1956
8 72.3 in 2003	8 65.8 in 2014	8 4.14 in 1998	8 0.31 in 1978
9 72.2 in 1978	9 66.0 in 1969	9 3.77 in 1968	9 0.32 in 2012
10 71.9 in 2011	10 66.8 in 2021	10 3.72 in 2014	0.32 in 2003
71.9 in 1982	66.8 in 1966	<b>11 3.49 in 2022</b>	

Normal Temperature for November at VNCF1 = 69.9°

Normal Rainfall for November at VNCF1 = 1.54 inches

---

Warmest Autumns	Coollest Autumns	Wettest Autumns	Driest Autumns
1 78.9 in 2009	1 71.8 in 1976	1 26.44 in 1983	1 3.04 in 1961
2 78.5 in 1998	2 72.1 in 1968	2 25.83 in 1995	2 3.63 in 1981
3 78.4 in 2015	3 72.8 in 2008	<b>3 25.14 in 2022</b>	3 5.24 in 1978
4 78.0 in 2020	72.8 in 1956	4 21.38 in 1997	4 5.81 in 2010
5 77.8 in 2018	5 73.6 in 1974	5 20.89 in 1960	5 6.18 in 1964
77.8 in 2013	6 73.7 in 1987	6 20.27 in 1968	6 6.59 in 1984
77.8 in 1985	73.7 in 1981	7 19.23 in 1959	7 7.16 in 1990
8 77.6 in 2010	73.7 in 1962	8 18.86 in 1982	8 7.38 in 2011
9 77.3 in 1994	9 73.9 in 1977	9 18.67 in 2014	9 7.53 in 2019
<b>10 77.0 in 2022</b>	10 74.0 in 2006	10 18.33 in 1957	10 7.81 in 1965
77.0 in 2017			
77.0 in 2011			
77.0 in 2003			

Normal Temperature for Autumn at VNCF1 = 76.0°

Normal Rainfall for Autumn at VNCF1 = 12.05 inches

**MYAKKA RIVER STATE PARK** (Temperature records began in March 1956  
and Rainfall records began in Sep 1943):

Warmest Novembers		Coolest Novembers		Wettest Novembers		Driest Novembers	
1	75.8 in 2015	1	62.1 in 1962	1	10.19 in 1997	1	0.00 in 2001
2	75.6 in 1986	2	62.4 in 1969	2	<b>5.55 in 2022</b>	2	0.02 in 1950
3	73.4 in 1998	3	62.8 in 1970	3	5.13 in 1953	3	0.03 in 1991
4	73.2 in 1985	4	63.2 in 1968	4	5.04 in 1947	4	0.07 in 2016
5	72.8 in 2020	5	64.1 in 2008	5	5.01 in 1972	5	0.19 in 2012
6	72.7 in 1958	6	65.3 in 2000	6	4.87 in 1981	6	0.20 in 1944
7	<b>72.3 in 2022</b>	7	65.4 in 2012	7	4.76 in 2020	7	0.30 in 1996
	72.3 in 1982		65.4 in 1963	8	4.73 in 1958		0.30 in 1993
9	72.1 in 2013	9	65.6 in 2021	9	4.52 in 1963		0.30 in 1965
	72.1 in 1978	10	65.8 in 1976	10	4.45 in 2002	10	0.37 in 1945

Normal Temperature for November at MKCF1 = 69.1°  
Normal Rainfall for November at MKCF1 = 2.02 inches

-----

Warmest Autumns		Coolest Autumns		Wettest Autumns		Driest Autumns	
1	78.5 in 2015	1	71.7 in 1962	1	<b>37.20 in 2022*</b>	1	4.57 in 1961
2	78.3 in 1998	2	72.6 in 1968	2	25.70 in 1962	2	5.85 in 1974
3	78.0 in 2019	3	72.7 in 1976	3	23.65 in 1997	3	6.14 in 1991
	78.0 in 2018	4	72.8 in 1963	4	23.43 in 1979	4	6.52 in 2008
5	77.9 in 1986	5	73.4 in 1970	5	21.95 in 2014	5	7.52 in 1970
6	77.8 in 1985		73.4 in 1969	6	21.67 in 1995	6	7.57 in 1955
7	77.7 in 1991	7	73.5 in 2008	7	21.13 in 1953	7	8.07 in 2012
8	77.5 in 2020	8	73.7 in 2000	8	20.63 in 1957	8	8.67 in 1950
9	76.8 in 2009	9	73.8 in 1992	9	20.18 in 2001	9	8.75 in 1996
	76.8 in 1990	10	73.9 in 1987	10	19.62 in 1952	10	8.84 in 2011

Average Temperature for Autumn 2022 = Numerous Days missing in October  
Normal Temperature for Autumn at MKCF1 = 75.6°

\*Total Rainfall for Autumn 2022 = Numerous Days missing in October  
Normal Rainfall for Autumn at MKCF1 = 13.66 inches

**WAUCHULA 2 N** (records began in January 1933):

Warmest Novembers		Coolest Novembers		Wettest Novembers		Driest Novembers	
1	75.7 in 1986	1	61.9 in 2012	1	11.18 in 1987	1	0.02 in 1940
2	74.6 in 2015	2	62.5 in 2014	2	10.38 in 1997	2	0.03 in 1967
3	74.4 in 1948		62.5 in 1949	3	6.43 in 1953	3	0.08 in 1960
4	73.2 in 1946	4	63.2 in 1962	4	5.89 in 1963	4	0.12 in 1991
5	72.7 in 2020	5	63.4 in 1970	5	4.75 in 1972	5	0.16 in 1974
	72.7 in 1985	6	63.5 in 1956	6	4.41 in 2002	6	0.17 in 2016
7	72.7 in 1958	7	63.8 in 2000	7	4.37 in 2014	7	0.19 in 2012
<b>8</b>	<b>71.9 in 2022</b>	8	63.9 in 1969	8	3.93 in 2010	8	0.23 in 1944
9	71.7 in 1988	9	64.0 in 1950	9	3.91 in 1937	9	0.24 in 1966
10	71.4 in 1978	10	64.4 in 1954	10	3.44 in 1988		0.24 in 1956
	71.4 in 1973			...		...	
				<b>34</b>	<b>1.73 in 2022</b>	<b>55</b>	<b>1.73 in 2022</b>

Normal Temperature for November at WAUF1 = 67.8°  
 Normal Rainfall for November at WAUF1 = 1.96 inches

---

Warmest Autumns		Coolest Autumns		Wettest Autumns		Driest Autumns	
1	78.1 in 2009	1	71.6 in 2014	<b>1</b>	<b>31.84 in 2022</b>	1	2.12 in 1961
2	77.9 in 2007	2	71.7 in 2012	2	27.02 in 1953	2	3.84 in 1974
3	77.7 in 1985	3	72.0 in 1956	3	23.48 in 1947	3	4.75 in 1967
4	77.6 in 2020	4	72.1 in 1943	4	20.13 in 1975	4	4.92 in 2008
5	77.5 in 2015	5	72.2 in 1954	5	20.12 in 1952	5	5.10 in 1978
6	77.2 in 1941	6	72.5 in 2010	6	19.04 in 1987	6	5.80 in 1991
7	76.9 in 2018		72.5 in 2006	7	19.02 in 1960	7	6.09 in 1976
8	76.3 in 1946		72.5 in 1953	8	19.00 in 1997	8	6.10 in 1944
9	76.2 in 1989		72.5 in 1944	9	18.33 in 2017	9	6.32 in 1980
10	76.1 in 2019	10	72.6 in 1976	10	16.90 in 1938	10	6.58 in 2003
	76.1 in 1990						
	76.1 in 1936						
...							
<b>23</b>	<b>75.5 in 2023</b>						
	75.5 in 1972						

Normal Temperature for Autumn at WAUF1 = 74.6°  
 Normal Rainfall for Autumn at WAUF1 = 11.37 inches

---



**ARCHBOLD BIO STN** (records began in January 1969):

Warmest Novembers	Coollest Novembers	Wettest Novembers	Driest Novembers
1 76.0 in 2015	1 62.2 in 2008	1 5.94 in 1987	1 0.00 in 2016
2 75.6 in 1986	2 63.1 in 2012	2 5.16 in 1998	0.00 in 2008
3 73.7 in 2020	3 63.2 in 1970	<b>3 4.53 in 2022</b>	3 0.08 in 1986
<b>4 73.3 in 2022</b>	4 64.2 in 1969	4 4.52 in 2002	4 0.12 in 1970
5 72.4 in 1992	5 64.4 in 1981	5 4.46 in 1997	5 0.13 in 1975
6 71.7 in 1985	6 65.1 in 2014	6 4.37 in 1992	6 0.20 in 1996
7 71.6 in 1994	7 65.3 in 2006	7 4.17 in 1977	7 0.21 in 2012
8 71.3 in 1978	8 65.4 in 2000	8 4.16 in 1994	8 0.24 in 2000
71.3 in 1973	9 66.0 in 1991	9 3.80 in 1988	9 0.29 in 1973
10 71.2 in 2013	10 66.3 in 1997	10 3.78 in 2005	10 0.40 in 2006

Normal Temperature for November at ACHF1 = 68.9°

Normal Rainfall for November at ACHF1 = 1.74 inches

-----

Warmest Autumns	Coollest Autumns	Wettest Autumns	Driest Autumns
1 78.2 in 2015	1 71.6 in 2008	1 22.87 in 2017	1 4.62 in 1996
2 78.0 in 2020	2 72.5 in 2012	2 22.49 in 1987	2 4.86 in 1990
3 77.4 in 1986	3 72.7 in 2006	<b>3 21.60 in 2022</b>	3 5.52 in 2006
4 76.6 in 2018	72.7 in 2000	4 20.74 in 1969	4 5.96 in 1974
5 76.3 in 2019	72.7 in 1976	5 18.09 in 2014	5 6.01 in 2018
76.3 in 1985	6 72.8 in 1997	6 17.33 in 1977	6 6.16 in 2010
7 76.2 in 2017	7 73.0 in 1981	7 17.04 in 2001	7 6.27 in 2008
<b>8 76.0 in 2022</b>	8 73.1 in 1970	8 16.98 in 2021	8 6.53 in 1980
9 75.8 in 2016	9 73.2 in 2014	9 16.79 in 1998	9 7.16 in 1984
75.8 in 1973	73.2 in 1984	10 16.55 in 2016	10 7.36 in 2007

Normal Temperature for Autumn at ACHF1 = 75.1°

Normal Rainfall for Autumn at ACHF1 = 12.32 inches

-----

**PUNTA GORDA AREA** (records began in May 1914):

Warmest Novembers	Coollest Novembers	Wettest Novembers	Driest Novembers
1 78.3 in 1948	1 63.9 in 1917	<b>1 8.02 in 2022</b>	1 0.00 in 1931
2 76.8 in 1986	2 64.2 in 1970	2 6.91 in 2020	2 0.02 in 2012
3 75.9 in 1946	64.2 in 1968	3 5.97 in 1916	3 0.05 in 2016
4 75.5 in 2015	4 65.1 in 2008	4 5.52 in 2002	0.05 in 1990
<b>5 74.3 in 2022</b>	5 65.7 in 1969	5 5.07 in 1987	5 0.07 in 2007
74.3 in 2020	6 65.8 in 1966	6 4.60 in 2014	6 0.08 in 1940
7 74.2 in 1985	7 66.1 in 1976	7 4.54 in 1965	7 0.09 in 1993
8 74.1 in 1958	66.1 in 1923	8 4.40 in 1972	8 0.10 in 1929
9 73.8 in 1961	9 67.0 in 2012	9 4.31 in 1921	9 0.11 in 1973
10 73.6 in 1947	67.0 in 1939	10 4.16 in 1951	10 0.12 in 1924
	67.0 in 1914		

Normal Temperature for November at PGD = 70.2°  
 Normal Rainfall for November at PGD = 2.12 inches

-----

Warmest Autumns	Coollest Autumns	Wettest Autumns	Driest Autumns
1 79.6 in 1948	1 72.4 in 1917	1 31.25 in 1959	1 5.37 in 2008
2 79.4 in 1986	2 73.0 in 1976	<b>2 24.77 in 2022</b>	2 5.75 in 1961
3 79.3 in 2020	73.0 in 1968	3 24.61 in 1922	3 5.87 in 1974
4 79.1 in 1946	4 73.5 in 1923	4 23.01 in 1962	4 5.91 in 1927
5 78.7 in 2018	5 73.7 in 1930	5 21.28 in 1953	5 5.95 in 1973
78.7 in 1985	6 73.8 in 1914	6 20.82 in 1995	6 6.00 in 1931
7 78.1 in 2015	7 73.9 in 1943	7 20.64 in 1947	7 6.22 in 1991
78.1 in 1947	73.9 in 1940	8 20.39 in 1924	8 6.33 in 1970
9 77.9 in 1960	9 74.0 in 1970	9 18.72 in 1929	9 6.62 in 1978
77.9 in 1951	10 74.1 in 2008	10 18.66 in 1951	10 6.82 in 1920
11 77.7 in 1961	74.1 in 1969		
<b>12 77.6 in 2022</b>	74.1 in 1966		
77.6 in 2019			
77.6 in 2009			

Normal Temperature for Autumn at PGD = 76.5°  
 Normal Rainfall for Autumn at PGD = 12.01 inches

-----

**FORT MYERS AREA** (records began in January 1902):

Warmest Novembers	Coollest Novembers	Wettest Novembers	Driest Novembers
1 78.3 in 1986	1 64.1 in 1917	1 8.06 in 1987	1 Trace in 2016
2 76.7 in 2015	2 64.9 in 1910	2 7.58 in 1998	Trace in 2000
<b>3 76.6 in 2022</b>	3 65.4 in 1956	3 5.67 in 2002	Trace in 1944
4 75.6 in 1985	4 65.7 in 1949	4 4.60 in 1921	4 0.01 in 1990
75.6 in 1948	5 65.9 in 1923	5 4.47 in 2014	5 0.02 in 1950
6 75.4 in 1994	6 66.1 in 1962	6 4.21 in 2020	6 0.03 in 1945
7 75.0 in 1946	7 66.2 in 1969	7 4.11 in 1997	7 0.04 in 1978
8 74.9 in 2020	8 66.3 in 1903	8 3.85 in 1972	8 0.06 in 1905
9 74.2 in 1978	9 66.6 in 1950	9 3.75 in 2005	9 0.08 in 1942
10 74.0 in 2017	10 66.7 in 1976	10 3.71 in 1922	10 0.09 in 2008
74.0 in 1988	66.7 in 1970		0.09 in 2007
			0.09 in 1931
		...	...
		<b>35 1.98 in 2022</b>	<b>87 1.98 in 2022</b>

Normal Temperature for November at FMY = 71.5°

Normal Rainfall for November at FMY = 1.78 inches

---

Warmest Autumns	Coollest Autumns	Wettest Autumns	Driest Autumns
1 80.4 in 1986	1 72.5 in 1903	1 32.14 in 1922	1 5.16 in 1988
2 80.2 in 1985	2 72.7 in 1910	2 27.85 in 1969	2 5.95 in 1942
3 79.8 in 2019	3 72.9 in 1976	3 26.80 in 1924	3 5.96 in 1974
<b>4 79.3 in 2022</b>	4 73.7 in 1908	4 23.34 in 1947	4 5.97 in 1907
5 79.1 in 2020	5 73.8 in 1913	5 23.33 in 1953	5 6.11 in 1992
79.1 in 2015	6 74.0 in 1923	6 22.99 in 1962	6 6.12 in 1906
7 78.8 in 1979	7 74.1 in 1953	7 22.36 in 2020	7 6.31 in 2004
8 78.7 in 1994	8 74.3 in 1909	8 21.74 in 1998	8 6.50 in 1966
9 78.6 in 2018	9 74.4 in 1943	9 21.44 in 1952	9 6.67 in 1978
10 78.5 in 2021	74.4 in 1914	10 20.90 in 2011	10 6.78 in 1904
78.5 in 2007		...	
78.5 in 1996		<b>17 20.02 in 2022</b>	
78.5 in 1990			

Normal Temperature for Autumn at FMY = 77.2°

Normal Rainfall for Autumn at FMY = 13.86 inches

---

For more local climate information, please visit our web page at <https://www.weather.gov/tampabay> and look within the "Climate and Past Weather" drop down menu above the map of the area.