



## NOAA - National Weather Service

Tampa Bay Area

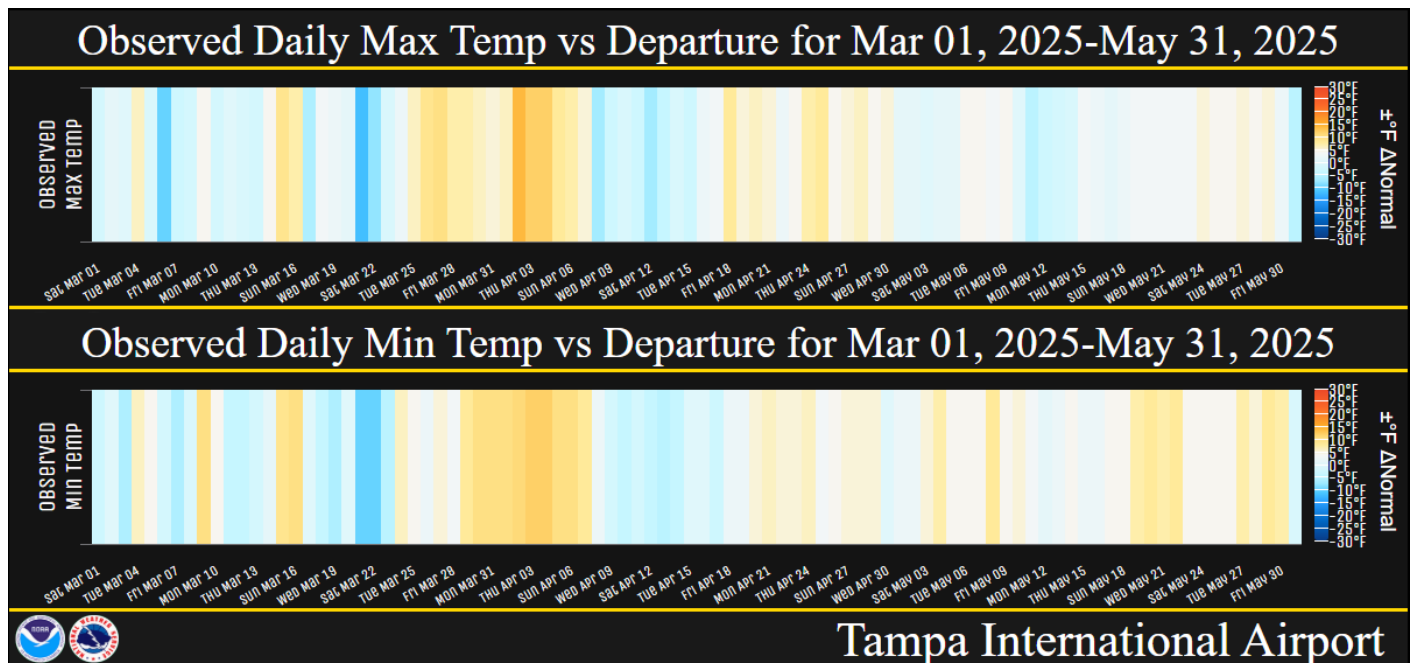
2525 14th Avenue SE, Ruskin, Florida 33570

813-645-2323 <https://weather.gov/tampabay>

### May and Spring 2025 Weather Summary for West Central and Southwest Florida

This May we saw above normal temperatures with averages running about 1.5 to 3.5 degrees above the 1991-2020 normals. This placed several locations in the Top Ten Warmest Mays since records began. As for meteorological Spring 2025 (March/April/May), temperatures averaged from near normal to about 2.5 degrees above normal with a few sites ending up in the Top Ten Warmest for Spring.

The graphic below depicts the high and low temperature departure from normal for each day during Spring (March/April/May) 2025 at Tampa International Airport. You'll notice that there are more days with lows that were well above normal (orange bars) compared to the high temperatures which had numerous days that were near to slightly below normal (white/light blue bars). This helped push average temperatures above normal during May and slightly above normal for the Spring.



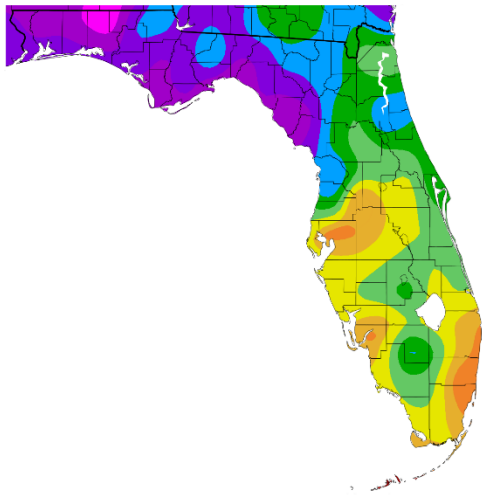
**MAY TEMPERATURE RANKINGS (°F) :**

Location	Rank	May 2025 Avg Temp	Normal May Temp	Dep fm Normal	Records Began
Plant City	2nd Warmest	82.6°	78.7°	+3.9°	Sep 1892
Tampa Area	2nd Warmest	82.6°	79.5°	+3.1°	Apr 1890
Fort Myers Area	2nd Warmest (tie)	82.0°	79.3°	+2.7°	Jan 1902
Lakeland Area	3rd Warmest	81.8°	78.2°	+3.6°	Jan 1915
Winter Haven Area	4th Warmest	81.2°	79.3°	+1.9°	Mar 1941
Wauchula	1st Warmest	81.0°	76.3°	+4.7°	Jan 1933
Venice	5th Warmest	80.9°	77.5°	+3.4°	May 1955
Punta Gorda Area	3rd Warmest (tie)	80.7	77.9°	+2.8°	May 1914
St Petersburg Area	10th Warmest	80.7°	79.4°	+1.3°	Jul 1914
Bartow	7th Warmest (tie)	80.5°	77.6°	+2.9°	Jun 1892
Sarasota-Bradenton Area	4th Warmest	80.1°	77.8°	+2.3°	Jan 1911
St. Leo	6th Warmest (tie)	79.7°	76.7°	+3.0°	Apr 1895
Tarpon Springs	8th Warmest	79.7°	77.6	+2.1°	Jan 1892
Myakka River State Park	12th Warmest	78.8°	77.4°	+1.4°	Mar 1956
Archbold Bio Stn	4th Warmest	78.7°	76.3°	+2.4°	Jan 1969
Brooksville Area	18th Warmest (tie)	78.0°	75.3°	+2.7°	Jan 1892
Inverness 3 SE	18th Warmest (tie)	77.4°	74.8°	+2.6°	Jul 1948
Chiefland 5 ESE	16th Warmest	76.1°	74.5°	+1.6°	Jul 1956

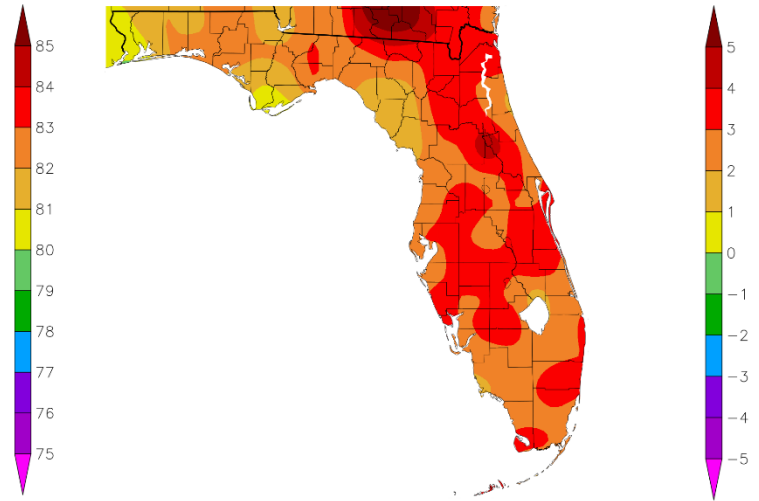
**SPRING TEMPERATURE RANKINGS (°F) :**

Location	Rank	Spring 2025 Avg Temp	Normal Spr Temp	Dep fm Normal	Records Began
Tampa Area	3rd Warmest (tie)	76.6°	74.0°	+2.6°	Apr 1890
Plant City	3rd Warmest	76.5°	73.6°	+2.9°	Sep 1892
Fort Myers Area	9th Warmest	76.5°	74.8°	+1.7°	Jan 1902
Lakeland Area	7th Warmest (tie)	75.7°	73.3°	+2.4°	Jan 1915
St Petersburg Area	12th Warmest (tie)	75.5°	74.2°	+1.3°	Jul 1914
Winter Haven Area	13th Warmest	75.2°	74.1°	+1.1°	Mar 1941
Sarasota-Bradenton Area	7th Warmest	74.7°	72.9°	+1.8°	Jan 1911
Venice	10th Warmest (tie)	74.6°	72.6°	+20°	May 1955
Punta Gorda Area	19th Warmest	74.6°	73.2°	+1.4°	May 1914
Bartow	23rd Warmest (tie)	74.1°	72.6°	+1.5°	Jun 1892
Tarpon Springs	12th Warmest (tie)	74.0°	72.2	+1.8°	Jan 1892
St. Leo	17th Warmest	73.7°	71.5°	+2.2°	Apr 1895
Wauchula	18th Warmest (tie)	73.3°	71.2°	+2.1°	Jan 1933
Myakka River State Park	31st Coolest (tie)	72.5°	72.6°	-0.1°	Mar 1956
Archbold Bio Stn	25th Warmest	71.9°	71.7°	+0.2°	Jan 1969
Brooksville Area	36th Warmest (tie)	71.8°	69.6°	+2.2°	Jan 1892
Inverness 3 SE	36th Warmest (tie)	70.5°	68.8°	+1.7°	Jul 1948
Chiefland 5 ESE	17th Warmest (tie)	69.9°	68.6°	+1.3°	Jul 1956

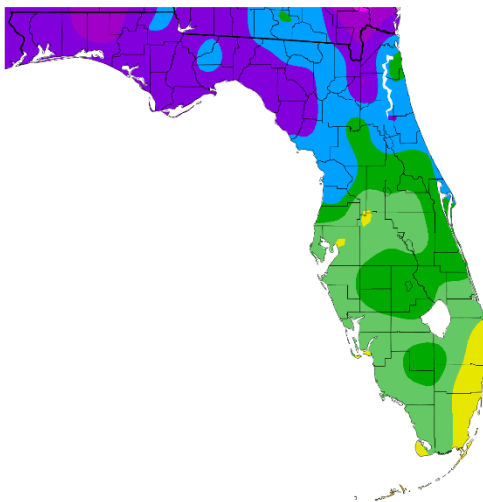
Temperature (F)  
5/1/2025 – 5/31/2025



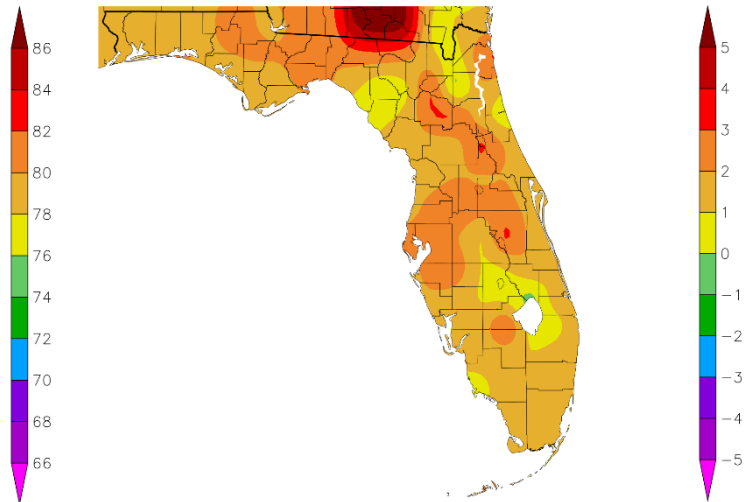
Departure from Normal Temperature (F)  
5/1/2025 – 5/31/2025



Temperature (F)  
3/1/2025 – 5/31/2025



Departure from Normal Temperature (F)  
3/1/2025 – 5/31/2025



Graphics Source: NOAA Regional Climate Centers

As for rainfall, March and April were rather dry with less than 25 percent of normal rainfall across much of West Central and Southwest Florida, but parts of the northern Nature Coast were above normal. As for May, the interior and eastern half of the Florida peninsula saw above normal rainfall thanks to many days of southwest to west flow, while closer to the west coast remained rather dry.

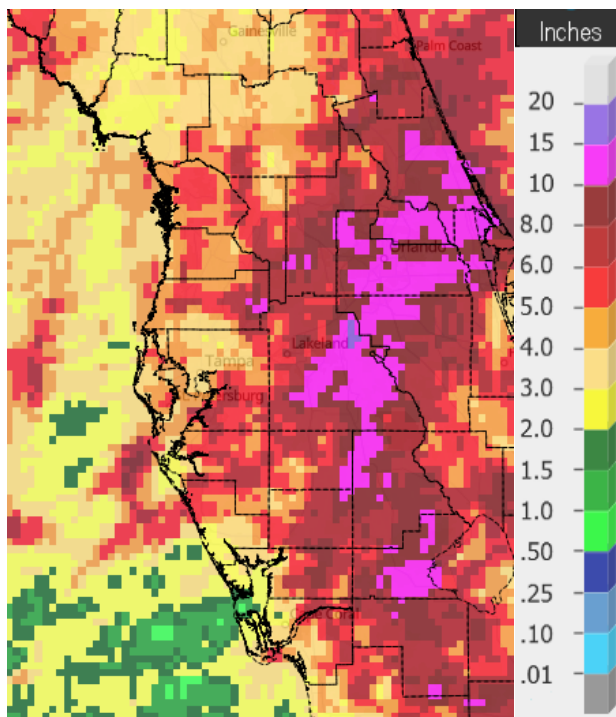
#### **MAY RAINFALL RANKINGS (inches)**

Location	Rank	May 2025 Rain Total	Normal May Rain	Dep fm Normal	Records Began
Bartow	8th Wettest	10.79	2.95	+7.84	Jun 1892
Lakeland Area	21st Wettest	6.57	3.80	+2.77	Jan 1915
Wauchula	22nd Wettest	5.65	3.51	+2.14	Jan 1933
Winter Haven Area	16th Wettest	5.63	2.67	+2.96	Mar 1941
St. Leo	34th Wettest	5.23	2.98	+2.25	Apr 1895
Myakka River State Park	21st Wettest	4.91	3.75	+1.16	Sep 1943
Archbold Bio Stn	21st Wettest	4.73	4.36	+0.37	Jan 1969
Inverness 3 SE	23rd Wettest	4.70	3.09	+1.61	Jul 1948
Tampa Area	31st Wettest	4.18	2.60	+1.58	Apr 1890
Plant City	49th Wettest	4.12	4.04	+0.08	Feb 1893
Chiefland 5 ESE	25th Wettest	3.70	2.78	+0.92	Jul 1956
Fort Myers Area	61st Wettest	3.69	3.46	+0.23	Jan 1902
Punta Gorda Area	60th Driest	3.22	3.26	-0.04	May 1914
St. Petersburg Area	47th Wettest	2.92	2.26	+0.66	Jul 1914
Sarasota-Bradenton Area	47th Wettest	2.80	2.58	+0.22	Jan 1911
Venice	40th Driest	2.74	3.25	-0.51	May 1955
Brooksville Area	59th Driest	2.69	3.35	-0.66	Jan 1892
Tarpon Springs	66th Driest	1.94	2.35	-0.41	Jan 1892

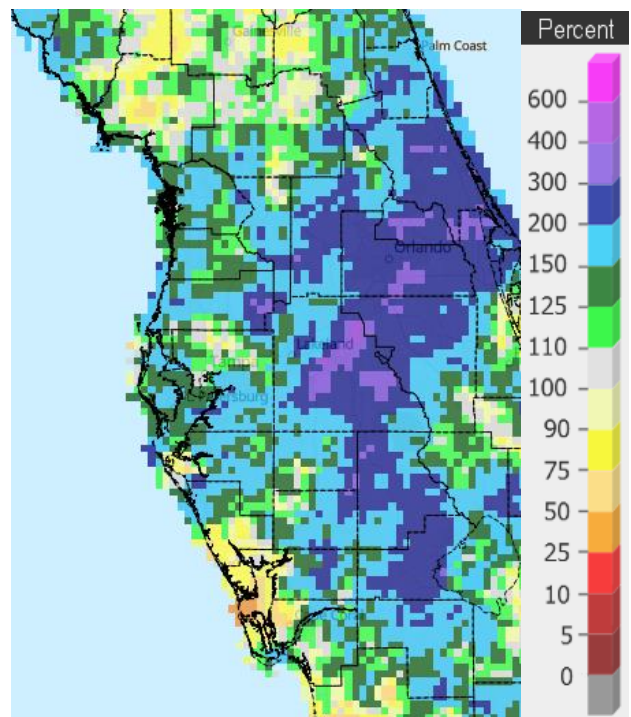
#### **SPRING RAINFALL RANKINGS (inches)**

Location	Rank	Spring 2025 Rain Total	Normal Spr Rain	Dep fm Normal	Records Began
Chiefland 5 ESE	22nd Wettest	12.88	9.56	+3.32	Jul 1956
Bartow	50th Wettest	11.22	8.51	+2.71	Jun 1892
Inverness 3 SE	30th Driest	8.01	9.07	-1.06	Jul 1948
Myakka River State Park	39th Driest	7.95	9.73	-1.78	Sep 1943
St. Leo	48th Driest	7.84	9.22	-1.38	Apr 1895
Lakeland Area	35th Driest	7.42	9.68	-2.26	Jan 1915
Archbold Bio Stn	13th Driest	6.96	9.77	-2.81	Jan 1969
Winter Haven Area	26th Driest	6.85	8.21	-1.36	Mar 1941
Wauchula	25th Driest	6.65	9.42	-2.77	Jan 1933
Tampa Area	49th Driest	5.79	7.67	-1.88	Apr 1890
Brooksville Area	25th Driest	5.61	8.19	-2.58	Jan 1892
Plant City	23rd Driest (tie)	5.17	9.70	-4.53	Feb 1893
Fort Myers Area	33rd Driest	5.06	7.97	-2.91	Jan 1902
Tarpon Springs	30th Driest	4.83	8.12	-3.29	Jan 1892
Punta Gorda Area	22nd Driest	4.76	7.77	-3.01	May 1914
Sarasota-Bradenton Area	21st Driest	4.54	7.89	-3.35	Jan 1911
St. Petersburg Area	20th Driest	4.31	6.77	-2.46	Jul 1914
Venice	15th Driest	4.27	8.69	-4.42	May 1955

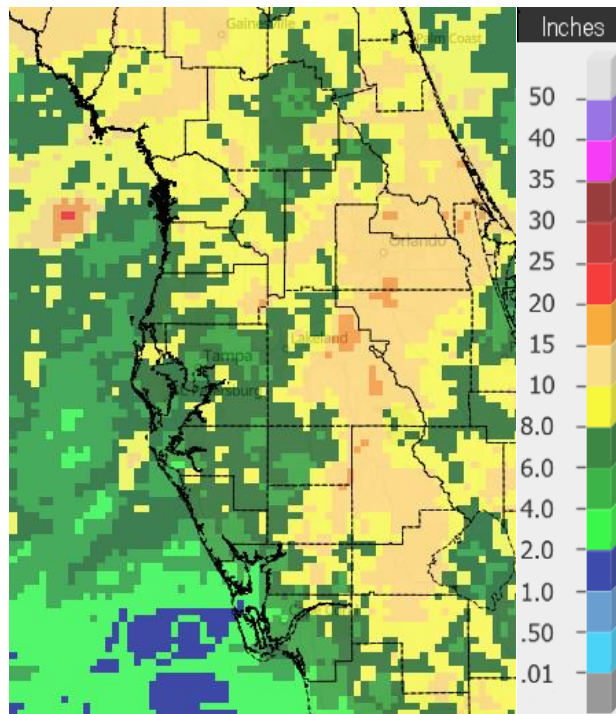




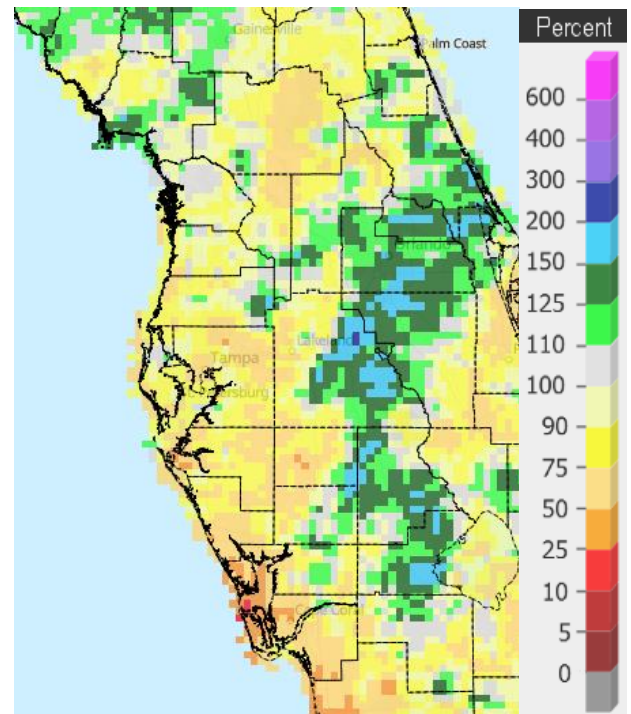
**May 2025 Rainfall**



**Percent of Normal**



**Spring (Mar/Apr/May) 2025 Rainfall**



**Percent of Normal**

On the following pages are tables of the Top Ten Warmest, Coolest, Wettest, and Driest Mays and Springs at some official NWS locations, which includes the average/total for this May and Spring 2025 (March/April/May) where available, and the 1991-2020 Normal (average) temperature and rainfall.

## Chiefland 5 ESE (Records began July 1956):

Warmest Mays	Coollest Mays	Wettest Mays	Driest Mays
1 78.5 in 1991	1 72.3 in 1992	1 13.14 in 1976	1 0.00 in 2021
2 78.1 in 2019	2 72.5 in 2013	2 7.50 in 2010	0.00 in 2001
3 77.2 in 2017	72.5 in 2005	3 6.99 in 1959	3 0.05 in 2000
77.2 in 1959	72.5 in 1988	4 6.93 in 1966	4 0.23 in 2008
5 77.1 in 2024	5 72.6 in 1967	5 6.87 in 2014	5 0.26 in 1965
6 77.0 in 1995	72.6 in 1960	6 6.82 in 1969	6 0.62 in 1985
7 76.9 in 2015	7 72.8 in 2007	7 6.72 in 2018	7 0.68 in 1994
76.9 in 1975	72.8 in 2006	8 6.65 in 2005	8 0.76 in 2007
9 76.7 in 2012	9 72.9 in 1971	9 5.99 in 1991	9 0.82 in 1998
10 76.6 in 2018	10 73.0 in 2001	10 5.72 in 1980	0.82 in 1988
76.6 in 1990		...	
12 76.5 in 1962		<b>25 3.70 in 2025</b>	
13 76.3 in 2022			
76.3 in 1996			
15 76.2 in 2003			
<b>16 76.1 in 2025</b>			

Normal Temperature for May at CHIF1 = 74.5°

Normal Rainfall for May at CHIF1 = 2.78 in.

-----

Warmest Springs	Coollest Springs	Wettest Springs	Driest Springs
1 73.4 in 2015	1 65.8 in 2005	1 24.94 in 1959	1 2.69 in 2007
2 72.1 in 2020	2 66.0 in 1969	2 23.30 in 1982	2 2.92 in 2000
3 72.0 in 1991	3 66.4 in 1960	3 21.65 in 1991	3 3.71 in 2006
4 71.7 in 2012	4 66.5 in 2013	4 19.46 in 2014	4 4.66 in 2002
5 71.3 in 2017	5 66.8 in 1993	5 19.45 in 1957	5 4.71 in 1989
6 70.8 in 2022	66.8 in 1971	6 19.41 in 2005	6 4.77 in 2004
70.8 in 2019	7 66.9 in 1966	7 18.33 in 1996	7 5.29 in 2017
70.8 in 2002	8 67.0 in 1996	8 16.64 in 2018	8 5.46 in 1994
9 70.5 in 2003	9 67.2 in 2001	9 16.28 in 1983	9 5.72 in 2019
10 70.4 in 1995	67.2 in 1962	10 16.23 in 1976	10 5.75 in 1998
...		...	
<b>17 69.9 in 2025</b>		<b>22 12.88 in 2025</b>	
69.9 in 1975			
69.9 in 1970			

Normal Temperature for Spring at CHIF1 = 68.6°

Normal Rainfall for Spring at CHIF1 = 9.56 in

**Inverness 3 SE (Records began July 1948):**

Warmest Mays	Coollest Mays	Wettest Mays	Driest Mays
1 80.0 in 1953	1 71.6 in 1992	1 11.97 in 1976	1 0.04 in 2008
2 79.7 in 2010	2 72.3 in 1988	2 11.48 in 2009	2 0.20 in 2000
3 79.2 in 2024	3 72.6 in 1993	3 10.61 in 2018	3 0.29 in 2021
4 79.1 in 1975	4 73.4 in 2005	4 10.59 in 1959	4 0.40 in 1965
5 78.7 in 1962	5 73.6 in 2006	5 8.79 in 1979	5 0.42 in 1994
6 78.4 in 2019	6 73.7 in 1997	6 8.11 in 2012	6 0.49 in 1998
7 78.2 in 1991	7 73.9 in 2001	7 7.71 in 2014	7 0.54 in 2007
8 78.1 in 2022	8 74.0 in 2007	8 7.33 in 1984	8 0.74 in 1997
78.1 in 2015	74.0 in 1999	9 7.27 in 1952	0.74 in 1977
78.1 in 1959	10 74.2 in 1982	10 6.92 in 1982	10 0.78 in 2001
...	74.2 in 1976	...	
<b>18 77.4 in 2025</b>		<b>23 4.70 in 2025</b>	
77.4 in 1974			

Normal Temperature for May at INVFl = 74.8°

Normal Rainfall for May at INVFl = 3.09 in.

---

Warmest Springs	Coollest Springs	Wettest Springs	Driest Springs
1 74.0 in 2015	1 66.3 in 1993	1 24.95 in 1959	1 1.96 in 1967
2 73.7 in 1953	2 66.9 in 1992	2 21.14 in 1960	2 2.76 in 1977
3 73.5 in 1967	3 67.1 in 1996	3 20.75 in 1982	3 3.22 in 2000
4 73.1 in 1963	4 67.2 in 1988	4 18.07 in 2022	4 3.60 in 1994
5 73.0 in 2023	5 67.8 in 2018	5 17.63 in 2018	5 4.03 in 2013
73.0 in 2020	6 68.1 in 2001	6 17.36 in 2014	6 4.05 in 2007
7 72.9 in 2012	7 68.3 in 2007	7 17.22 in 1991	7 4.24 in 2019
8 72.5 in 2022	8 68.7 in 2004	8 15.78 in 1987	8 4.47 in 2004
72.5 in 1965	68.7 in 1999	15.74 in 1976	9 4.63 in 1955
10 72.2 in 1974	10 69.1 in 2006	10 15.34 in 1958	10 4.67 in 1999
...	...	...	...
<b>36 70.5 in 2025</b>	<b>30 70.5 in 2025</b>	<b>46 8.01 in 2025</b>	<b>30 8.01 in 2025</b>
70.5 in 1950	70.5 in 1950		

Normal Temperature for Spring at INVFl = 68.8°

Normal Rainfall for Spring at INVFl = 9.07 in.

**Brooksville Area (Records began January 1892):**

Warmest Mays	Coollest Mays	Wettest Mays	Driest Mays
1 80.7 in 1905	1 72.5 in 2005	1 16.27 in 1976	1 Trace in 1977
2 80.6 in 1927	2 72.8 in 1917	2 15.57 in 2009	2 0.19 in 1926
3 80.3 in 1933	3 73.1 in 2001	3 12.25 in 2018	3 0.23 in 1949
4 79.9 in 2024	4 73.2 in 1924	4 12.20 in 1923	4 0.29 in 2000
5 79.6 in 1995	73.2 in 1920	5 9.54 in 2014	5 0.45 in 1951
6 79.4 in 1899	6 73.4 in 1923	6 9.25 in 1906	6 0.47 in 1948
7 79.2 in 1929	7 73.6 in 1999	7 9.15 in 1912	7 0.56 in 2021
8 79.1 in 1962	8 73.7 in 1925	8 8.71 in 1921	8 0.57 in 1908
9 79.0 in 1975	9 73.8 in 2006	9 8.18 in 1957	9 0.60 in 1899
79.0 in 1902	73.8 in 1954	10 7.92 in 1919	10 0.65 in 2024
...		...	...
<b>18 78.0 in 2025</b>		<b>74 2.69 in 2025</b>	<b>59 2.69 in 2025</b>
78.0 in 2015			

Normal Temperature for May at BKV = 75.3°

Normal Rainfall for May at BKV = 3.35 in.

-----

Warmest Springs	Coollest Springs	Wettest Springs	Driest Springs
1 75.2 in 1929	1 66.1 in 2005	1 22.97 in 1959	1 1.20 in 1898
2 75.0 in 1945	2 67.6 in 2004	2 21.84 in 1960	2 1.57 in 2000
3 74.4 in 1927	67.6 in 1926	3 21.28 in 1991	3 2.20 in 1977
4 74.3 in 2015	67.6 in 1892	4 20.07 in 1928	2.20 in 1945
74.3 in 1935	5 67.8 in 1924	5 19.69 in 1976	5 2.35 in 2006
6 74.2 in 2020	6 68.0 in 2010	6 19.67 in 1900	6 2.58 in 1910
7 74.0 in 1948	7 68.1 in 1998	7 18.83 in 2018	7 3.25 in 1908
8 73.6 in 1938	8 68.2 in 2013	8 18.78 in 1982	8 3.56 in 1967
9 73.3 in 1994	9 68.3 in 2001	9 18.54 in 1987	9 3.65 in 2017
10 73.2 in 1905	68.3 in 1999	10 18.26 in 1957	10 3.67 in 1897
...	...		...
<b>36 71.8 in 2025</b>	<b>70 71.8 in 2025</b>		<b>25 5.61 in 2025</b>
71.8 in 1936	71.8 in 1936		

Normal Temperature for Spring at BKV = 69.6°

Normal Rainfall for Spring at BKV = 8.19 in.

-----



**St. Leo (Records began April 1895) :**

Warmest Mays	Coollest Mays	Wettest Mays	Driest Mays
1 81.3 in 1995	1 71.7 in 1928	1 16.81 in 1979	1 0.03 in 2000
2 80.7 in 2024	2 72.3 in 1921	2 14.37 in 1923	2 0.08 in 2021
3 80.6 in 1899	3 73.0 in 1923	3 11.64 in 2009	3 0.15 in 2008
4 80.2 in 1953	4 73.1 in 1931	4 10.33 in 1976	4 0.17 in 1953
5 80.1 in 2003	5 73.6 in 1917	5 10.06 in 2018	5 0.28 in 1965
<b>6 79.7 in 2025</b>	6 73.7 in 1940	6 9.43 in 1919	6 0.40 in 1985
79.7 in 2000	7 73.8 in 1920	7 9.23 in 1963	7 0.51 in 1914
8 79.6 in 1896	8 73.9 in 1992	8 8.64 in 1905	8 0.78 in 2001
9 79.4 in 1962	9 74.1 in 1918	9 8.63 in 1957	9 0.84 in 1998
10 79.3 in 1985	10 74.2 in 1903	10 8.28 in 1921	10 0.86 in 1927
79.3 in 1902		...	...
		<b>34 5.23 in 2025</b>	<b>98 5.23 in 2025</b>

Normal Temperature for May at STLf1 = 76.7°

Normal Rainfall for May at STLf1 = 2.98 in.

-----

Warmest Springs	Coollest Springs	Wettest Springs	Driest Springs
1 75.2 in 1948	1 65.6 in 1931	1 24.63 in 1987	1 1.12 in 2000
2 74.9 in 2002	2 67.9 in 1915	2 21.67 in 1979	2 1.83 in 1967
3 74.8 in 1945	3 68.0 in 1928	3 21.01 in 1960	3 2.87 in 1898
4 74.7 in 2003	4 68.5 in 1930	4 20.57 in 1900	4 3.20 in 1904
5 74.6 in 2015	5 69.0 in 1940	5 20.48 in 1959	5 3.32 in 1977
6 74.5 in 1908	6 69.2 in 1916	6 20.01 in 1953	6 3.96 in 1999
7 74.4 in 1995	7 69.3 in 2013	7 19.13 in 1991	7 4.03 in 1908
8 74.2 in 2020	69.3 in 1971	8 18.77 in 1928	8 4.10 in 1914
74.2 in 1953	69.3 in 1969	9 18.34 in 1957	9 4.19 in 1910
10 74.1 in 1994	10 69.4 in 1992	10 17.99 in 2018	10 4.46 in 2006
...	69.4 in 1926	...	...
<b>17 73.7 in 2025</b>	69.4 in 1920	<b>83 7.84 in 2025</b>	<b>48 7.84 in 2025</b>

Normal Temperature for Spring at STLf1 = 71.5°

Normal Rainfall for Spring at STLf1 = 9.22 in.

## Tarpon Springs (Records began January 1892):

Warmest Mays	Coollest Mays	Wettest Mays	Driest Mays
1 82.1 in 1995	1 71.7 in 1939	1 15.17 in 1979	1 0.00 in 2001
2 81.2 in 2024	2 72.6 in 1897	2 10.14 in 1991	0.00 in 2000
3 80.6 in 2019	3 72.8 in 1917	3 10.13 in 1976	3 Trace in 1927
80.6 in 1991	4 73.6 in 1894	4 9.38 in 1946	4 0.01 in 2007
5 80.3 in 1933	5 74.0 in 1928	5 8.18 in 1921	5 0.03 in 1965
6 80.0 in 1996	6 74.1 in 1992	6 7.70 in 1969	6 0.08 in 2021
7 79.8 in 2010	74.1 in 1941	7 7.17 in 1957	7 0.11 in 1949
<b>8 79.7 in 2025</b>	74.1 in 1921	8 6.84 in 1915	8 0.13 in 1899
9 79.6 in 2003	74.1 in 1903	9 6.79 in 2018	9 0.14 in 1994
10 79.3 in 1953	74.1 in 1892	10 6.53 in 2012	10 0.15 in 1953
79.3 in 1943		...	...
		<b>67 1.94 in 2025</b>	<b>66 1.94 in 2025</b>

Normal Temperature for May at TRPF1 = 77.6°

Normal Rainfall for May at TRPF1 = 2.35 in.

---

Warmest Springs	Coollest Springs	Wettest Springs	Driest Springs
1 75.5 in 1948	1 66.9 in 1940	1 22.38 in 1959	1 0.97 in 1898
2 75.4 in 2020	2 67.5 in 1915	2 20.20 in 1979	2 1.40 in 2000
75.4 in 2015	3 68.0 in 1960	3 19.83 in 1991	3 1.43 in 2006
4 75.0 in 1995	68.0 in 1931	4 18.91 in 1987	4 1.47 in 1967
75.0 in 1991	5 68.3 in 1971	5 18.30 in 1957	5 1.65 in 2023
6 74.9 in 1929	6 68.7 in 1916	6 18.26 in 1942	6 1.86 in 1908
7 74.8 in 1997	7 68.8 in 1969	7 17.99 in 1960	7 2.81 in 1990
8 74.4 in 1994	68.8 in 1941	8 16.73 in 1900	8 2.82 in 1977
74.4 in 1945	9 68.9 in 1900	9 15.71 in 1983	9 2.83 in 1945
10 74.3 in 2024	10 69.0 in 1906	10 15.58 in 1931	10 3.21 in 1927
11 74.1 in 2019			...
<b>12 74.0 in 2025</b>			<b>30 4.83 in 2025</b>
74.0 in 1922			

Normal Temperature for Spring at TRPF1 = 72.2°

Normal Rainfall for Spring at TRPF1 = 8.12 in.

**Tampa Area (Records began April 1890):**

Warmest Mays	Coollest Mays	Wettest Mays	Driest Mays
1 83.0 in 2024	1 73.8 in 1891	1 17.64 in 1979	1 Trace in 2001
<b>2 82.6 in 2025</b>	2 74.2 in 1992	2 9.41 in 1921	2 0.02 in 2000
3 81.7 in 1995	3 74.3 in 1928	3 9.11 in 2009	3 0.07 in 1994
4 81.6 in 2022	4 74.4 in 1982	4 8.54 in 2014	4 0.10 in 1992
81.6 in 2019	5 74.5 in 1897	5 8.13 in 1976	5 0.16 in 2021
6 81.5 in 1945	6 74.7 in 1940	6 7.73 in 2018	0.16 in 1941
7 81.2 in 1991	74.7 in 1917	7 7.55 in 1959	7 0.17 in 1973
8 81.1 in 2021	8 74.8 in 1921	8 7.21 in 1957	8 0.22 in 1985
9 81.0 in 2017	74.8 in 1903	9 6.92 in 1894	9 0.24 in 1989
10 80.9 in 2010	10 74.9 in 1923	10 6.88 in 1991	10 0.31 in 1940
		...	...
		<b>31 4.18 in 2025</b>	<b>106 4.18 in 2025</b>

Normal Temperature for May at TPA = 79.5°

Normal Rainfall for May at TPA = 2.60 in.

---

Warmest Springs	Coollest Springs	Wettest Springs	Driest Springs
1 77.5 in 2022	1 68.3 in 1915	1 25.67 in 1959	1 0.61 in 1898
2 77.1 in 2015	2 68.5 in 1931	2 20.78 in 1957	2 0.86 in 2000
<b>3 76.6 in 2025</b>	68.5 in 1901	3 20.62 in 1979	3 1.29 in 1967
76.6 in 2012	4 68.8 in 1969	4 19.91 in 1930	4 2.17 in 1945
5 76.3 in 2023	5 69.1 in 1971	5 17.54 in 1931	5 2.32 in 1977
6 76.2 in 2020	6 69.2 in 1993	6 15.26 in 1987	6 2.46 in 2006
7 76.1 in 2024	7 69.4 in 1992	7 14.45 in 1983	7 2.64 in 1999
8 76.0 in 2017	69.4 in 1926	8 14.38 in 2014	8 2.74 in 1989
9 75.4 in 1991	9 69.6 in 1983	9 14.31 in 1924	9 2.98 in 1985
75.4 in 1945	69.6 in 1940	10 13.73 in 1960	10 3.06 in 2017
	69.6 in 1916	...	...
	69.6 in 1891	<b>88 5.79 in 2025</b>	<b>49 5.79 in 2025</b>

Normal Temperature for Spring at TPA = 74.0°

Normal Rainfall for Spring at TPA = 7.67 in.

## St Petersburg Area (Records began July 1914) :

Warmest Mays	Coollest Mays	Wettest Mays	Driest Mays
1 83.9 in 2024	1 75.3 in 1928	1 10.64 in 1959	1 0.00 in 1953
2 82.0 in 2010	75.3 in 1921	2 9.68 in 2018	2 Trace in 2007
3 81.5 in 2015	3 75.4 in 1992	3 9.21 in 1979	3 0.02 in 2000
4 81.3 in 1995	75.4 in 1917	4 8.17 in 1976	4 0.04 in 2001
5 81.2 in 1933	5 75.7 in 1940	5 7.85 in 1925	5 0.05 in 1941
6 80.9 in 2003	6 75.8 in 1954	6 7.16 in 1991	6 0.12 in 2021
80.9 in 1991	7 76.2 in 1920	7 7.11 in 1915	7 0.18 in 1945
8 80.8 in 1975	8 76.4 in 1993	8 7.05 in 1921	8 0.19 in 1973
80.8 in 1935	9 76.5 in 1988	9 6.99 in 2009	9 0.22 in 1992
10 80.7 in 2025	10 76.6 in 1960	10 6.08 in 1957	10 0.24 in 1994
	76.6 in 1951	...	...
		47 2.92 in 2025	65 2.92 in 2025

Normal Temperature for May at SPG = 79.4°

Normal Rainfall for May at SPG = 2.26 in.

---

Warmest Springs	Coollest Springs	Wettest Springs	Driest Springs
1 77.7 in 2015	1 69.5 in 1915	1 26.45 in 1959	1 0.88 in 1945
2 77.0 in 2024	2 70.1 in 1931	2 17.88 in 1957	2 1.42 in 2000
3 76.7 in 2020	3 70.2 in 1993	3 17.20 in 1930	3 1.53 in 2006
76.7 in 2012	70.2 in 1983	4 17.18 in 1931	4 1.73 in 1977
5 76.5 in 2023	5 70.7 in 1996	5 16.31 in 1987	5 2.48 in 1967
6 75.9 in 1948	70.7 in 1940	6 15.65 in 1982	6 2.73 in 2007
75.9 in 1935	70.7 in 1926	7 15.17 in 1960	7 2.84 in 1938
75.9 in 1929	8 70.8 in 1916	8 14.50 in 2003	8 2.85 in 1949
9 75.8 in 2022	9 71.0 in 1992	9 14.03 in 1991	9 2.88 in 1999
75.8 in 2002	10 71.1 in 1924	10 13.98 in 1958	10 2.96 in 2002
11 75.6 in 2011			...
12 75.5 in 2025			20 4.31 in 2025
75.5 in 2003			

Normal Temperature for Spring at SPG = 74.2°

Normal Rainfall for Spring at SPG = 6.77 in.

**Plant City (Temperature Records began September 1892/Rainfall Records began February 1893):**

Warmest Mays	Coollest Mays	Wettest Mays	Driest Mays
1 83.8 in 2024	1 71.3 in 1928	1 16.44 in 2009	1 0.01 in 2001
<b>2 82.6 in 2025</b>	2 71.9 in 1931	2 14.27 in 2018	2 0.14 in 2000
3 82.0 in 2019	3 72.0 in 1940	3 11.77 in 1991	3 0.29 in 1953
4 80.8 in 2017	4 72.4 in 1941	4 11.68 in 1979	4 0.50 in 1992
5 80.4 in 2022	5 73.0 in 1925	5 10.64 in 1923	5 0.58 in 1981
6 80.1 in 1915	6 73.6 in 1992	6 10.14 in 1957	6 0.62 in 2007
7 80.0 in 1995	7 73.9 in 1932	7 9.10 in 1905	7 0.67 in 1985
8 79.9 in 2021	8 74.0 in 1979	8 9.04 in 1976	0.67 in 1948
9 79.8 in 1975	74.0 in 1960	9 8.72 in 1907	9 0.72 in 1898
10 79.6 in 2010	10 74.1 in 1901	10 8.41 in 2022	10 0.75 in 1945
		...	...
		<b>49 4.12 in 2025</b>	<b>80 4.12 in 2025</b>

Normal Temperature for May at PLCF1 = 78.7°

Normal Rainfall for May at PLCF1 = 4.04 in.

---

Warmest Springs	Coollest Springs	Wettest Springs	Driest Springs
1 76.8 in 2023	1 64.9 in 1931	1 26.28 in 1959	1 1.56 in 1898
2 76.7 in 2020	2 66.8 in 1901	2 23.68 in 1957	2 1.91 in 1977
<b>3 76.5 in 2025</b>	3 67.0 in 1932	3 20.67 in 1991	3 2.30 in 1981
4 76.3 in 2024	4 67.9 in 1940	4 19.68 in 1960	4 2.40 in 1908
5 76.2 in 2015	5 68.0 in 1941	5 19.42 in 1987	5 2.61 in 1945
6 75.8 in 2022	6 68.1 in 1930	6 19.38 in 1900	6 2.62 in 2017
7 75.6 in 2019	7 68.9 in 1925	7 19.25 in 1933	7 3.13 in 1902
8 75.3 in 2021	8 69.0 in 1942	8 18.59 in 2009	8 3.29 in 1949
9 75.1 in 1912	69.0 in 1928	9 18.56 in 1930	9 3.47 in 1985
10 75.0 in 2017	10 69.1 in 1924	10 18.30 in 1931	10 3.61 in 1967
			...
			<b>23 5.17 in 2025</b>
			5.17 in 1927

Normal Temperature for Spring at PLCF1 = 73.6°

Normal Rainfall for Spring at PLCF1 = 9.70 in.

## Lakeland (Records began January 1915) :

Warmest Mays	Coollest Mays	Wettest Mays	Driest Mays
1 82.9 in 1995	1 73.4 in 1928	1 19.19 in 2018	1 0.13 in 1953
2 82.7 in 2024	2 74.0 in 2007	2 16.03 in 1979	2 0.34 in 2021
<b>3 81.8 in 2025</b>	3 74.4 in 1941	3 14.95 in 2009	3 0.37 in 2008
4 81.0 in 1996	74.4 in 1921	4 10.83 in 1923	4 0.44 in 2001
5 80.8 in 2019	5 74.8 in 1923	5 10.65 in 1991	5 0.50 in 1985
6 80.7 in 1991	6 75.1 in 1982	6 9.68 in 1957	6 0.55 in 2000
7 80.6 in 2010	75.1 in 1970	7 9.10 in 1968	0.55 in 1965
8 80.5 in 1990	8 75.2 in 1940	8 8.75 in 2023	8 0.63 in 1986
9 80.4 in 1994	75.2 in 1917	9 8.45 in 1922	9 0.89 in 1960
10 80.1 in 1933	10 75.4 in 1972	10 8.21 in 1921	10 0.92 in 1945
	75.4 in 1960	...	
	75.4 in 1931	<b>21 6.57 in 2025</b>	
	75.4 in 1920		

Normal Temperature for May at LLDF1 = 78.2°

Normal Rainfall for May at LLDF1 = 3.80 in.

-----

Warmest Springs	Coollest Springs	Wettest Springs	Driest Springs
1 76.3 in 2015	1 69.1 in 1941	1 24.87 in 1959	1 2.28 in 1945
2 76.1 in 2020	2 69.3 in 1915	2 23.85 in 2018	2 3.02 in 1981
3 76.0 in 2023	3 69.5 in 1960	3 21.98 in 1981	3 3.16 in 2000
76.0 in 1995	4 69.6 in 1969	4 21.14 in 1957	4 3.32 in 1967
5 75.8 in 2024	5 69.8 in 1983	5 21.03 in 1979	5 3.40 in 2017
75.8 in 1994	69.8 in 1925	6 20.64 in 1934	6 3.75 in 1977
<b>7 75.7 in 2025</b>	7 69.9 in 1971	7 18.56 in 1982	7 3.89 in 2006
75.7 in 1991	8 70.0 in 2007	8 18.46 in 1987	8 4.03 in 1985
75.7 in 1935	9 70.2 in 1926	9 17.86 in 1931	9 4.45 in 1949
10 75.4 in 2022	70.2 in 1924	17.86 in 1930	10 4.47 in 2021
		...	...
		<b>77 7.42 in 2025</b>	<b>35 7.42 in 2025</b>

Normal Temperature for Spring at LLDF1 = 73.3°

Normal Rainfall for Spring at LLDF1 = 9.68 in.



**Winter Haven Area (Records began March 1941) :**

Warmest Mays	Coollest Mays	Wettest Mays	Driest Mays
1 82.9 in 2024	1 74.3 in 1972	1 12.72 in 1957	1 0.03 in 2000
2 81.8 in 2019	2 74.5 in 1960	2 10.36 in 1982	2 0.05 in 2021
3 81.6 in 1995	3 74.6 in 1982	3 8.54 in 1943	3 0.49 in 1945
<b>4 81.2 in 2025</b>	4 74.9 in 1954	4 8.26 in 2009	4 0.57 in 1941
5 80.9 in 2015	5 75.1 in 1941	5 8.11 in 1976	5 0.58 in 1965
80.9 in 2010	6 75.3 in 1983	6 7.63 in 1946	6 0.71 in 2004
80.9 in 2003	7 75.4 in 1971	7 7.58 in 2018	7 0.80 in 1951
8 80.4 in 2022	8 75.5 in 1988	8 6.81 in 1947	8 0.81 in 1985
9 80.2 in 1990	75.5 in 1968	9 6.75 in 1975	9 0.84 in 1949
80.2 in 1989	10 75.7 in 2007	10 6.54 in 2016	10 0.88 in 1969
80.2 in 1953	75.7 in 1977	11 6.28 in 1968	
	75.7 in 1973	12 6.19 in 1966	
		13 6.06 in 1961	
		14 6.02 in 1978	
		15 5.83 in 1959	
		<b>16 5.63 in 2025</b>	

Normal Temperature for May at GIF = 79.3°

Normal Rainfall for May at GIF = 2.67 in.

-----

Warmest Springs	Coollest Springs	Wettest Springs	Driest Springs
1 77.7 in 2015	1 69.1 in 1983	1 23.21 in 1957	1 1.61 in 2000
2 76.5 in 2020	2 69.5 in 1960	2 21.81 in 1959	2 2.25 in 1945
3 76.1 in 1948	3 69.8 in 1971	3 20.49 in 1982	3 2.61 in 2017
4 76.0 in 2022	69.8 in 1969	4 20.32 in 1960	4 2.94 in 1981
5 75.9 in 2024	5 70.1 in 1941	5 18.23 in 1947	5 3.77 in 2007
75.9 in 1991	6 70.4 in 1987	6 15.16 in 1991	6 3.78 in 1967
75.9 in 1945	70.4 in 1968	7 14.42 in 2010	7 4.01 in 2021
8 75.7 in 1949	8 70.6 in 1993	8 13.59 in 1970	8 4.08 in 2015
9 75.6 in 2023	70.6 in 1981	13.59 in 1973	9 4.17 in 2006
10 75.5 in 2012	10 70.8 in 2013	10 13.44 in 1958	10 4.39 in 1965
11 75.4 in 2019	70.8 in 2005	...	...
12 75.3 in 2003	70.8 in 1988	<b>55 6.85 in 2025</b>	<b>26 6.85 in 2025</b>
<b>13 75.2 in 2025</b>			

Normal Temperature for Spring at GIF = 74.1°

Normal Rainfall for Spring at GIF = 8.21 in.

-----

**Bartow (Records began June 1892) :**

Warmest Mays	Coollest Mays	Wettest Mays	Driest Mays
1 82.9 in 2015	1 73.3 in 1928	1 17.74 in 1923	1 0.02 in 1965
2 81.6 in 2024	2 73.5 in 1913	2 13.05 in 1979	2 0.25 in 1941
3 81.4 in 1995	3 73.8 in 1941	3 12.96 in 1957	3 0.36 in 1908
4 81.1 in 2014	4 74.3 in 1894	4 11.42 in 2009	4 0.40 in 1992
81.1 in 2003	5 74.5 in 1917	5 11.16 in 1905	5 0.45 in 1951
6 81.0 in 2012	6 74.6 in 1921	6 11.15 in 1930	6 0.52 in 2021
<b>7 80.5 in 2025</b>	7 74.7 in 1940	7 11.04 in 1976	7 0.72 in 1955
80.5 in 1905	74.7 in 1897	<b>8 10.79 in 2025</b>	8 0.75 in 1949
9 80.0 in 1990	9 74.8 in 1992	9 10.35 in 1921	9 0.87 in 1953
80.0 in 1975	10 74.9 in 1982	10 9.46 in 2018	10 0.91 in 2004
80.0 in 1953			

Normal Temperature for May at BARF1 = 77.6°

Normal Rainfall for May at BARF1 = 2.95 in.

---

Warmest Springs	Coollest Springs	Wettest Springs	Driest Springs
1 80.1 in 2015	1 67.8 in 1915	1 25.91 in 1959	1 2.34 in 1908
2 76.0 in 2003	2 68.2 in 1901	2 22.99 in 1930	2 2.48 in 1967
3 75.9 in 2012	3 69.3 in 1914	3 22.88 in 1957	3 2.55 in 2000
4 75.6 in 2014	4 69.6 in 1983	4 19.55 in 1934	4 3.27 in 1977
5 75.4 in 1908	5 70.1 in 1993	5 19.44 in 1923	5 3.53 in 1949
6 75.3 in 1945	6 70.5 in 1894	6 19.34 in 1905	3.53 in 1894
7 75.1 in 1991	70.5 in 1893	7 19.05 in 1947	7 3.55 in 2017
8 74.9 in 2023	8 70.6 in 1971	8 18.67 in 1991	8 3.57 in 1892
9 74.8 in 1995	70.6 in 1960	9 17.84 in 1979	9 3.70 in 2021
74.8 in 1948	70.6 in 1925	10 16.39 in 1937	10 3.77 in 1911
...	70.6 in 1913	...	...
<b>23 74.1 in 2025</b>	70.6 in 1896	<b>50 11.22 in 2025</b>	<b>85 11.22 in 2025</b>
74.1 in 1997			

Normal Temperature for Spring at BARF1 = 72.6°

Normal Rainfall for Spring at BARF1 = 8.51 in.

**Sarasota-Bradenton Area (Records began January 1911):**

Warmest Mays	Coollest Mays	Wettest Mays	Driest Mays
1 81.4 in 2024	1 71.8 in 1917	1 9.52 in 1996	1 0.00 in 1941
2 80.7 in 2019	2 72.9 in 1928	2 9.39 in 1991	2 Trace in 2007
80.7 in 1995	3 73.1 in 1940	3 9.34 in 1978	3 0.02 in 2024
<b>4 80.1 in 2025</b>	4 73.4 in 1911	4 9.26 in 1957	0.02 in 1953
5 79.6 in 2010	5 73.5 in 1931	5 9.05 in 1921	5 0.10 in 1951
6 79.5 in 1991	73.5 in 1921	6 8.56 in 1954	0.10 in 1945
79.5 in 1990	7 73.7 in 1960	7 8.18 in 1959	7 0.13 in 1973
8 79.4 in 2012	8 74.0 in 1924	8 7.52 in 1934	8 0.15 in 1993
9 78.9 in 2017	9 74.1 in 1926	9 7.05 in 2014	0.15 in 1952
10 78.8 in 2022	10 74.2 in 1992	10 6.97 in 2018	10 0.16 in 1967
	74.2 in 1923	...	...
		<b>47 2.80 in 2025</b>	<b>69 2.80 in 2025</b>

Normal Temperature for May at SRQ = 77.8°

Normal Rainfall for May at SRQ = 2.58 in.

-----

Warmest Springs	Coollest Springs	Wettest Springs	Driest Springs
1 75.4 in 2023	1 66.8 in 1931	1 25.80 in 1957	1 1.39 in 1967
75.4 in 2020	2 67.2 in 1915	2 17.97 in 1959	2 2.01 in 2006
3 75.2 in 2015	3 68.3 in 1916	3 17.92 in 1991	3 2.07 in 1977
4 75.1 in 2024	4 68.5 in 1940	4 16.60 in 1996	4 2.12 in 2024
75.1 in 2012	5 68.8 in 1941	5 16.55 in 1997	5 2.50 in 1945
75.0 in 2022	68.8 in 1926	6 15.97 in 1958	6 2.61 in 1981
<b>7 74.7 in 2025</b>	68.8 in 1924	7 15.17 in 1930	7 2.83 in 1974
8 74.5 in 2019	8 69.0 in 1983	8 14.97 in 1969	8 2.97 in 1956
9 74.4 in 2016	9 69.1 in 1971	9 14.76 in 2014	9 3.02 in 2007
10 74.3 in 1995	10 69.5 in 1914	10 14.20 in 1987	3.02 in 1949
			...
			<b>21 4.54 in 2025</b>

Normal Temperature for Spring at SRQ = 72.9°

Normal Rainfall for Spring at SRQ = 7.89 in.

**Myakka River State Park (Temperature Records began March 1956/  
Rainfall Records began September 1943):**

Warmest Mays	Coollest Mays	Wettest Mays	Driest Mays
1 81.3 in 1995	1 73.5 in 1960	1 15.06 in 2018	1 0.02 in 2007
2 80.1 in 2010	2 74.2 in 1992	2 12.81 in 1959	0.02 in 2000
3 79.9 in 2019	3 74.9 in 1988	3 9.17 in 2014	3 0.23 in 1985
4 79.8 in 2003	4 75.0 in 2001	4 8.85 in 1970	4 0.35 in 1953
5 79.5 in 2024	75.0 in 1993	5 7.95 in 1975	5 0.42 in 1945
6 79.4 in 1990	6 75.1 in 2013	6 7.92 in 2009	6 0.50 in 1955
7 79.3 in 1998	75.1 in 1963	7 7.73 in 2016	7 0.55 in 1994
8 79.2 in 1978	8 75.2 in 1972	8 7.55 in 1976	8 0.56 in 1973
9 79.0 in 1996	9 75.4 in 1970	9 6.02 in 1968	9 0.61 in 1951
10 78.9 in 2012	10 75.6 in 2020	10 5.59 in 1963	10 0.62 in 1949
78.9 in 1975		...	
<b>12 78.8 in 2025</b>		<b>21 4.91 in 2025</b>	

Normal Temperature for May at MKCF1 = 77.4°

Normal Rainfall for May at MKCF1 = 3.75 in.

---

Warmest Springs	Coollest Springs	Wettest Springs	Driest Springs
1 75.5 in 2003	1 69.1 in 1960	1 23.31 in 1959	1 1.43 in 2006
2 75.4 in 1995	2 69.8 in 1971	2 18.47 in 1987	2 1.83 in 1945
3 74.9 in 1997	69.8 in 1962	3 18.06 in 1957	3 3.01 in 1989
4 74.1 in 2012	4 70.0 in 2013	4 18.02 in 2018	4 3.44 in 1981
74.1 in 1982	5 70.4 in 1986	5 17.63 in 1993	5 3.56 in 1955
74.1 in 1975	6 70.5 in 1983	6 16.55 in 1998	6 3.75 in 2024
7 74.0 in 2019	70.5 in 1958	7 16.43 in 2014	7 3.80 in 2004
74.0 in 1990	8 70.7 in 2005	8 15.59 in 1969	8 4.05 in 1978
9 73.8 in 1994	70.7 in 1988	9 15.18 in 1970	9 4.12 in 1950
10 73.6 in 2016	10 70.8 in 1959	10 14.48 in 1982	10 4.16 in 1971
...	...	...	...
<b>25 72.5 in 2025</b>	<b>31 72.5 in 2025</b>	<b>41 7.95 in 2025</b>	<b>39 7.95 in 2025</b>
72.5 in 1980	72.5 in 1980		

Normal Temperature for Spring at MKCF1 = 72.6°

Normal Rainfall for Spring at MKCF1 = 9.73 in.

---

**Venice (Records began May 1955):**

Warmest Mays	Coollest Mays	Wettest Mays	Driest Mays
1 82.7 in 2010	1 72.9 in 1988	1 13.39 in 2018	1 0.06 in 1994
2 82.2 in 2024	2 74.3 in 1960	2 8.57 in 1969	0.06 in 1989
3 81.8 in 1995	3 74.5 in 1981	3 7.73 in 2009	3 0.12 in 1995
4 81.3 in 2003	4 74.6 in 1980	4 7.70 in 1959	4 0.35 in 2024
<b>5 80.9 in 2025</b>	5 74.7 in 1977	5 6.41 in 1996	5 0.40 in 1972
6 80.8 in 2012	6 75.2 in 1973	6 5.86 in 1976	0.40 in 1967
7 80.2 in 2019	7 75.3 in 1963	7 5.61 in 1975	7 0.41 in 2007
8 79.8 in 2011	8 75.4 in 1983	8 5.13 in 1991	0.41 in 2001
9 78.9 in 1996	9 75.5 in 1970	9 5.12 in 2003	9 0.46 in 2008
10 78.8 in 1998	10 75.6 in 2005	10 4.98 in 1962	10 0.54 in 1999
		...	...
		<b>32 2.74 in 2025</b>	<b>40 2.74 in 2025</b>

Normal Temperature for May at VNCf1 = 77.5°

Normal Rainfall for May at VNCf1 = 3.25 in.

-----

Warmest Springs	Coollest Springs	Wettest Springs	Driest Springs
1 76.4 in 2012	1 68.8 in 1988	1 21.37 in 1957	1 0.79 in 1967
2 75.9 in 2023	2 69.3 in 1962	2 16.90 in 1959	2 1.87 in 1981
75.9 in 2003	3 69.5 in 1993	3 16.33 in 1969	3 1.94 in 1974
4 75.8 in 2015	4 69.7 in 1960	4 16.16 in 2018	4 2.58 in 1963
5 75.6 in 2024	5 69.8 in 1987	5 16.05 in 1984	5 2.83 in 1971
6 75.4 in 2011	69.8 in 1983	6 15.10 in 1983	6 2.92 in 1977
7 75.1 in 1995	7 69.9 in 1986	7 14.79 in 1987	7 3.30 in 2006
8 74.9 in 1997	8 70.0 in 2005	8 13.99 in 1962	3.30 in 1989
9 74.7 in 2002	9 70.1 in 1981	9 13.92 in 1996	9 3.36 in 1979
<b>10 74.6 in 2025</b>	10 70.4 in 1971	10 13.86 in 1991	10 3.59 in 2023
74.6 in 2022	70.4 in 1958		11 3.62 in 1999
			12 3.63 in 1968
			13 4.02 in 2019
			14 4.16 in 2024
			<b>15 4.27 in 2025</b>

Normal Temperature for Spring at VNCf1 = 72.6°

Normal Rainfall for Spring at VNCf1 = 8.69 in.

-----

**Wauchula 2 N (Records began January 1933):**

## Warmest Mays

**1 81.0 in 2025**

2 80.9 in 2024

3 80.1 in 2009

4 79.8 in 1975

5 79.7 in 1995

6 79.4 in 1990

79.4 in 1933

8 79.2 in 1935

9 78.9 in 2008

78.9 in 1991

## Coolest Mays

1 73.0 in 1992

2 73.1 in 2013

3 74.1 in 2001

4 74.3 in 1960

74.3 in 1940

6 74.4 in 2007

74.4 in 1999

8 74.5 in 1982

9 74.6 in 1954

10 74.7 in 2011

74.7 in 1941

## Wettest Mays

1 13.94 in 2018

2 11.32 in 1954

3 11.31 in 1957

4 10.61 in 1963

5 9.37 in 2009

6 8.39 in 1976

7 7.82 in 1968

8 7.53 in 1934

9 7.42 in 1972

10 7.17 in 1939

...

**22 5.65 in 2025**

5.65 in 1956

## Driest Mays

1 0.00 in 2000

2 0.01 in 1965

3 0.23 in 2024

4 0.29 in 1945

5 0.30 in 2015

6 0.43 in 1953

7 0.48 in 2008

8 0.55 in 1941

9 0.56 in 1949

10 0.65 in 1995

Normal Temperature for May at WAUF1 = 76.3°

Normal Rainfall for May at WAUF1 = 3.51 in.

-----

## Warmest Springs

1 75.0 in 1945

2 74.8 in 1935

3 74.6 in 1975

74.6 in 1948

5 74.4 in 1991

6 74.1 in 2009

74.1 in 1938

8 74.0 in 2023

74.0 in 2015

74.0 in 1939

...

**18 73.3 in 2025**

73.3 in 2003

73.3 in 1965

## Coolest Springs

1 67.6 in 2013

2 68.8 in 2005

3 69.0 in 2004

69.0 in 1993

5 69.1 in 1996

69.1 in 1983

7 69.4 in 1960

8 69.8 in 2018

69.8 in 2007

10 69.9 in 2014

69.9 in 1950

## Wettest Springs

1 21.37 in 1947

2 20.73 in 1957

3 18.24 in 1998

4 17.01 in 2018

5 16.98 in 1962

6 16.65 in 1954

7 15.78 in 1958

8 15.60 in 1934

9 15.14 in 1959

10 14.19 in 1982

## Driest Springs

1 0.69 in 1945

2 0.85 in 1967

3 1.90 in 2006

4 2.25 in 2000

5 2.40 in 2004

6 2.42 in 2015

7 2.77 in 2024

8 4.05 in 2023

9 4.34 in 1981

10 4.60 in 1974

...

**25 6.65 in 2025**

Normal Temperature for Spring at WAUF1 = 71.2°

Normal Rainfall for Spring at WAUF1 = 9.42 in.



**Archbold Bio Stn (Records began January 1969):**

Warmest Mays	Coollest Mays	Wettest Mays	Driest Mays
1 79.9 in 2024	1 71.2 in 1992	1 14.46 in 2018	1 0.74 in 2024
2 79.1 in 1991	2 73.3 in 2013	2 7.99 in 2020	2 0.83 in 2021
3 79.0 in 1995	3 73.6 in 1988	3 7.61 in 1996	3 1.01 in 1983
<b>4 78.7 in 2025</b>	4 73.7 in 1993	4 7.23 in 2016	4 1.07 in 1993
5 78.5 in 2017	5 73.8 in 1982	5 7.00 in 1978	1.07 in 1993
6 78.2 in 2010	6 73.9 in 1983	6 6.97 in 1975	6 1.09 in 2005
7 78.1 in 2019	7 74.1 in 2005	7 6.96 in 1982	7 1.17 in 2000
8 78.0 in 1990	8 74.2 in 2006	8 6.75 in 2014	8 1.24 in 2007
78.0 in 1975	9 74.4 in 1977	9 6.53 in 1977	9 1.46 in 2006
10 77.4 in 2022	10 74.5 in 2007	10 6.52 in 1999	10 1.56 in 1986
	74.5 in 2001	...	
	74.5 in 1999	<b>21 4.73 in 2025</b>	

Normal Temperature for May at ACHF1 = 76.3°

Normal Rainfall for May at ACHF1 = 4.36 in.

-----

Warmest Springs	Coollest Springs	Wettest Springs	Driest Springs
1 75.3 in 2015	1 67.8 in 1983	1 18.74 in 2018	1 2.36 in 2006
2 74.0 in 1991	2 68.2 in 1993	2 17.63 in 1982	2 2.53 in 2024
3 73.7 in 2023	3 68.4 in 2013	3 16.84 in 2010	3 3.56 in 1971
73.7 in 2022	4 68.5 in 1987	4 15.34 in 2003	4 4.08 in 2007
5 73.6 in 2024	5 68.6 in 1992	5 14.26 in 1984	5 4.22 in 1981
6 73.5 in 2020	6 68.7 in 2005	6 14.01 in 1970	6 4.85 in 1990
73.5 in 2003	68.7 in 1986	7 13.53 in 1996	7 4.93 in 2002
73.5 in 1995	8 69.1 in 2010	8 13.41 in 1969	8 4.96 in 2017
9 73.3 in 1975	69.1 in 1988	9 12.51 in 1991	9 5.09 in 2000
10 73.1 in 2017	10 69.3 in 2004	10 12.24 in 1973	10 6.60 in 2009
73.1 in 2002			11 6.73 in 2022
...			12 6.85 in 1974
<b>25 71.9 in 2025</b>			<b>13 6.96 in 2025</b>

Normal Temperature for Spring at ACHF1 = 71.7°

Normal Rainfall for Spring at ACHF1 = 9.77 in.

-----

**Punta Gorda Area (Records began May 1914) :**

Warmest Mays	Coollest Mays	Wettest Mays	Driest Mays
1 83.0 in 2024	1 74.0 in 1917	1 15.98 in 2018	1 0.01 in 1927
2 80.9 in 1953	2 74.1 in 1928	2 10.13 in 1946	2 0.07 in 1992
<b>3 80.7 in 2025</b>	3 74.9 in 1992	3 9.45 in 1991	3 0.40 in 1965
80.7 in 1946	4 75.0 in 1916	4 9.27 in 1959	4 0.41 in 2000
5 80.5 in 1995	5 75.1 in 1920	5 8.24 in 1968	5 0.42 in 2004
6 80.2 in 1991	6 75.2 in 2001	6 8.20 in 1963	6 0.45 in 1953
7 79.9 in 2012	75.2 in 1970	7 7.77 in 1972	7 0.54 in 2024
79.9 in 1933	75.2 in 1925	8 7.34 in 1979	0.54 in 2001
9 79.7 in 2010	9 75.6 in 1977	9 7.29 in 1923	0.54 in 1967
79.7 in 1962	75.6 in 1941	10 7.18 in 1932	10 0.66 in 1998
			0.66 in 1941
		...	...
		<b>49 3.22 in 2025</b>	<b>60 3.22 in 2025</b>

Normal Temperature for May at PGD = 77.9°

Normal Rainfall for May at PGD = 3.26 in.

-----

Warmest Springs	Coollest Springs	Wettest Springs	Driest Springs
1 77.5 in 1945	1 68.3 in 1915	1 19.21 in 1957	1 0.69 in 1967
2 76.8 in 2024	2 68.8 in 1916	2 18.61 in 1947	2 1.20 in 2006
3 76.5 in 1948	3 69.4 in 1931	3 17.66 in 2018	3 1.82 in 2000
4 76.1 in 1953	4 70.2 in 1971	4 17.41 in 1930	4 2.10 in 1971
5 76.0 in 1946	5 70.5 in 1941	5 15.87 in 1970	5 2.14 in 1981
6 75.9 in 2023	6 70.8 in 2005	6 15.85 in 2010	6 2.24 in 2007
7 75.7 in 1944	7 70.9 in 1993	7 15.70 in 1959	7 2.27 in 1945
8 75.6 in 2015	70.9 in 1969	8 14.94 in 2003	8 3.31 in 1935
75.6 in 1991	9 71.1 in 2010	9 14.42 in 1931	9 3.45 in 1975
10 75.2 in 2022	71.1 in 2004	10 14.14 in 1991	10 3.55 in 1974
...	71.1 in 1983		...
<b>19 74.6 in 2025</b>			<b>22 4.76 in 2025</b>

Normal Temperature for Spring at PGD = 73.2°

Normal Rainfall for Spring at PGD = 7.77 in.

**Fort Myers Area (Records began January 1902) :**

Warmest Mays	Coollest Mays	Wettest Mays	Driest Mays
1 83.2 in 2024	1 74.3 in 1917	1 12.77 in 2018	1 0.04 in 2021
<b>2 82.0 in 2025</b>	2 74.5 in 1941	2 10.32 in 1968	2 0.20 in 2001
82.0 in 1995	3 74.8 in 1921	3 8.73 in 1980	3 0.34 in 1994
4 81.3 in 2023	4 74.9 in 1928	4 8.67 in 2022	0.34 in 1962
5 81.2 in 2010	5 75.0 in 1970	5 8.49 in 1925	5 0.41 in 1953
6 81.1 in 2012	6 75.1 in 1903	8.49 in 1911	6 0.47 in 2004
7 80.8 in 1991	7 75.3 in 1940	7 8.48 in 1991	7 0.50 in 1964
8 80.7 in 2021	75.3 in 1931	8 8.42 in 1922	8 0.54 in 2010
80.7 in 1975	75.3 in 1918	9 8.05 in 1989	9 0.62 in 1988
10 80.6 in 2017	10 75.5 in 1925	10 7.97 in 1957	0.62 in 1983
		...	...
		<b>61 3.69 in 2025</b>	<b>64 3.69 in 2025</b>

Normal Temperature for May at FMY = 79.3°

Normal Rainfall for May at FMY = 3.46 in.

---

Warmest Springs	Coollest Springs	Wettest Springs	Driest Springs
1 78.5 in 2023	1 69.4 in 1931	1 24.94 in 1970	1 1.89 in 1945
2 77.9 in 2022	2 70.0 in 1915	2 18.71 in 1958	2 2.18 in 1967
77.9 in 2015	3 70.2 in 1941	3 18.23 in 1947	3 2.36 in 2006
4 77.8 in 2020	4 70.5 in 1983	4 17.77 in 1930	4 2.44 in 1902
5 77.2 in 2024	5 70.8 in 1960	5 16.85 in 1933	5 2.54 in 1974
6 77.0 in 2012	6 71.1 in 1971	6 15.70 in 1941	6 2.69 in 2001
7 76.9 in 1997	71.1 in 1916	7 15.39 in 1957	7 3.37 in 1953
8 76.6 in 1991	71.1 in 1910	8 14.93 in 2022	8 3.42 in 1964
<b>9 76.5 in 2025</b>	9 71.2 in 1940	9 14.62 in 1991	9 3.45 in 1927
10 76.4 in 2002	71.2 in 1926	10 14.26 in 2018	10 3.93 in 2017
		...	...
		<b>92 5.06 in 2025</b>	<b>33 5.06 in 2025</b>

Normal Temperature for Spring at FMY = 74.8°

Normal Rainfall for Spring at FMY = 7.97 in.

---

For more Climate information visit our web site at the following link:  
<http://www.weather.gov/tampabay> and then go to the Climate and Past Weather  
drop down menu above the graphical forecast images.