



# NOAA - National Weather Service

Tampa Bay Area

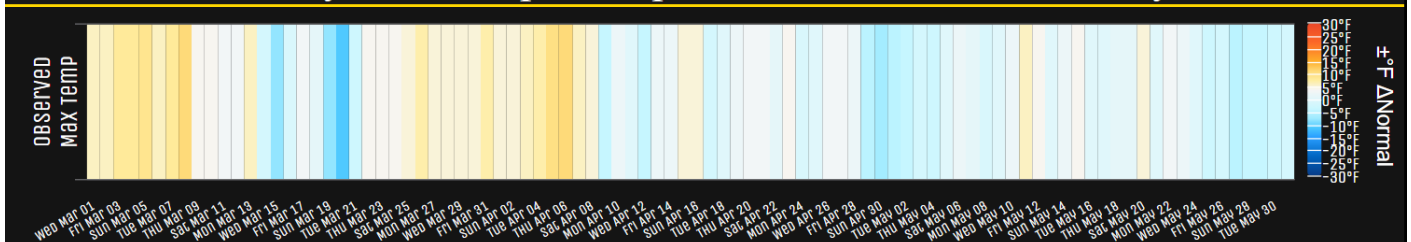
2525 14th Avenue SE, Ruskin, Florida 33570

813-645-2323 <https://weather.gov/tampabay>

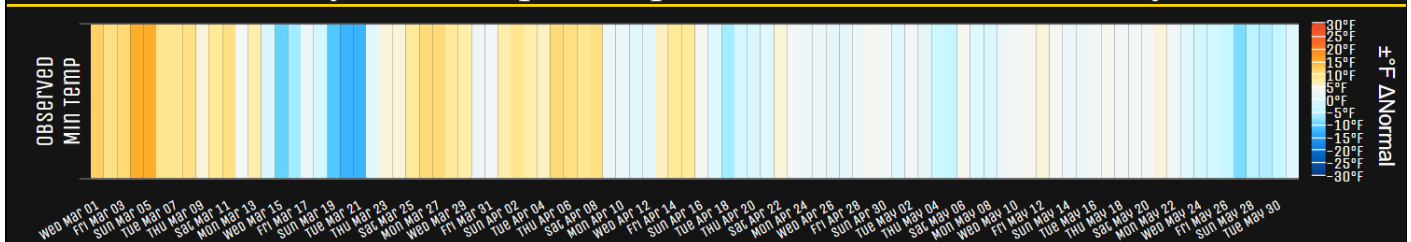
## May and Spring 2023 Climate Summary for West Central and Southwest Florida

This May we saw temperatures pretty close to normal with averages generally running from about 1 degree below normal to 1 degree above normal. As for Spring 2023 (March/April/May) temperatures averaged about 1 to 4 degrees above normal across the region thanks to several days well above normal in March and early April as depicted by the orange bars in the picture below. This placed several locations in the Top Ten Warmest.

### Observed Daily Max Temp vs Departure for Mar 01, 2023-May 31, 2023



### Observed Daily Min Temp vs Departure for Mar 01, 2023-May 31, 2023



## Tampa International Airport

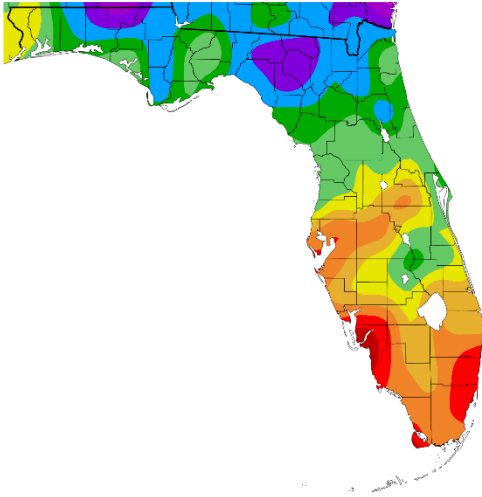
**MAY TEMPERATURE RANKINGS (°F) :**

Location	Rank	May 2023 Avg Temp	Normal May Temp	Dep fm Normal	Records Began
Fort Myers Area	2nd Warmest	81.3°	79.3°	+2.0°	Jan 1902
Tampa Area	17th Warmest (tie)	79.6°	79.5°	+0.1°	Apr 1890
St Petersburg Area	22nd Warmest (tie)	79.6°	79.4°	+0.2°	Jul 1914
Plant City	11th Warmest	79.4°	78.7°	+0.7°	Sep 1892
Venice	9th Warmest (tie)	78.7°	77.5°	+1.2°	May 1955
Winter Haven Area	48th Coolest (tie)	78.6°	79.3°	-0.7°	Mar 1941
Punta Gorda Area	28th Warmest (tie)	78.5°	77.9°	+0.6°	May 1914
Sarasota-Bradenton Area	11th Warmest (tie)	78.3°	77.8°	+0.5°	Jan 1911
Lakeland Area	26th Warmest (tie)	78.3°	78.2°	+0.1°	Jan 1915
Bartow	71st Coolest (tie)	77.5°	77.6°	-0.1°	Jun 1892
Wauchula 2 N	44th Warmest	76.5°	76.3°	+0.2°	Jan 1933
St. Leo	57th Coolest (tie)	76.5°	76.7°	-0.2°	Apr 1895
Archbold Bio Stn	33rd Coolest	76.2°	76.3°	-0.1°	Jan 1969
Inverness 3 SE	36th Warmest (tie)	76.1°	74.8°	+1.3°	Jul 1948
Brooksville Area	58th Warmest (tie)	76.1°	75.3°	+0.8°	Jan 1892
Myakka River State Pk	16th Coolest (tie)	76.0°	77.4°	-1.4°	Mar 1956
Tarpon Springs	72nd Coolest (tie)	75.7°	77.6°	-1.9°	Jan 1892
Chiefland 5 ESE	26th Coolest (tie)	74.3°	74.5°	-0.2°	Jul 1956

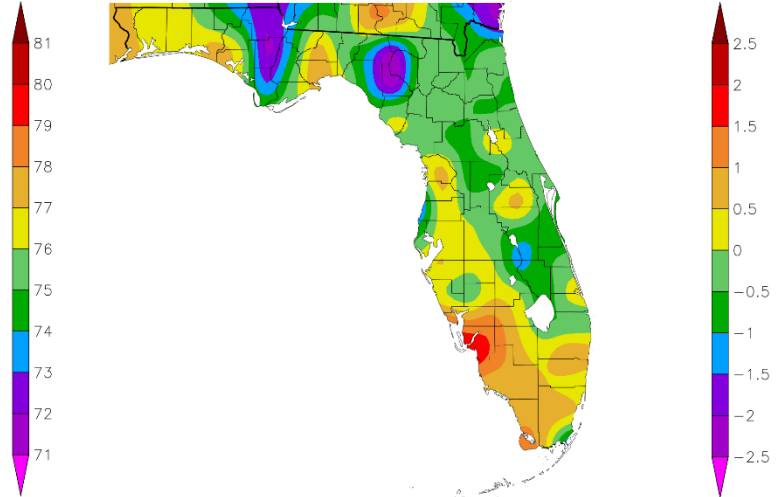
**SPRING TEMPERATURE RANKINGS (°F) :**

Location	Rank	Spring 2023 Avg Temp	Normal Spr Temp	Dep fm Normal	Records Began
Fort Myers Area	1st Warmest	78.5°	74.8°	+3.7°	Jan 1902
Plant City	1st Warmest	76.8°	73.6°	+3.2°	Sep 1892
St Petersburg Area	4th Warmest	76.5°	74.2°	+2.3°	Jul 1914
Tampa Area	4th Warmest	76.3°	74.0°	+2.3°	Apr 1890
Lakeland Area	3rd Warmest (tie)	76.0°	73.3°	+2.7°	Jan 1915
Venice	2nd Warmest (tie)	75.9°	72.6°	+3.3°	May 1955
Punta Gorda Area	5th Warmest	75.9°	73.2°	+2.7°	May 1914
Winter Haven Area	8th Warmest	75.6°	74.1°	+1.5°	Mar 1941
Sarasota-Bradenton Area	1st Warmest (tie)	75.4°	72.9°	+2.5°	Jan 1911
Bartow	8th Warmest	74.9°	72.6°	+2.3°	Jun 1892
Wauchula 2 N	8th Warmest (tie)	74.0°	71.2°	+2.8°	Jan 1933
St. Leo	14th Warmest (tie)	73.8°	71.5°	+2.3°	Apr 1895
Archbold Bio Stn	3rd Warmest (tie)	73.7°	71.7°	+2.0°	Jan 1969
Myakka River State Pk	11th Warmest (tie)	73.5°	72.6°	+0.9°	Mar 1956
Brooksville Area	11th Warmest (tie)	73.1°	69.6°	+3.5°	Jan 1892
Inverness 3 SE	5th Warmest (tie)	73.0°	68.8°	+4.2°	Jul 1948
Tarpon Springs	26th Warmest (tie)	72.9°	72.2°	+0.7°	Jan 1892
Chiefland 5 ESE	15th Warmest (tie)	70.0°	68.6°	+1.4°	Jul 1956

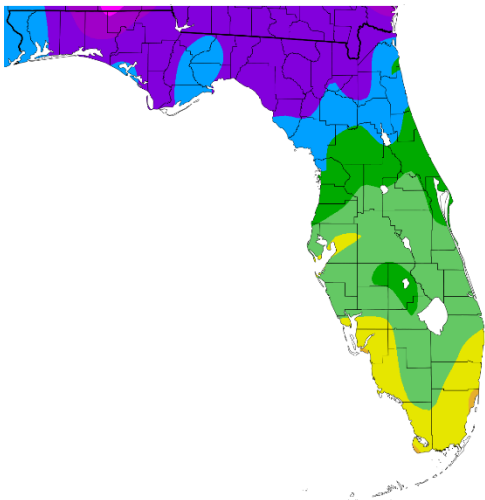
Temperature (F)  
5/1/2023 - 5/31/2023



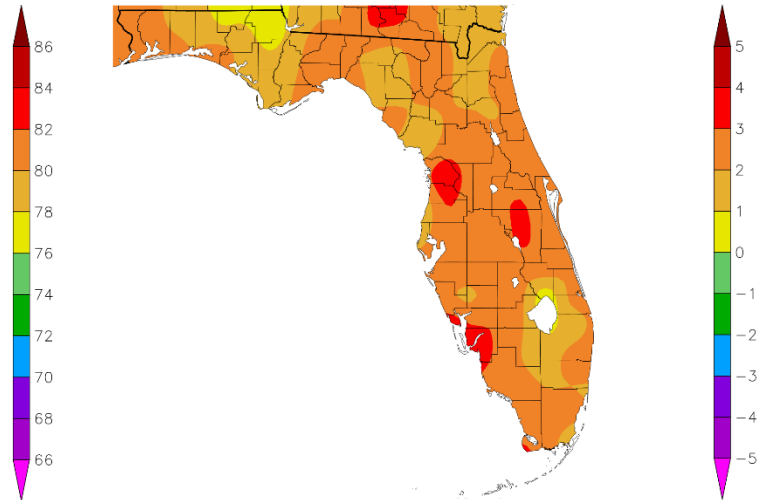
Departure from Normal Temperature (F)  
5/1/2023 - 5/31/2023



Temperature (F)  
3/1/2023 - 5/31/2023



Departure from Normal Temperature (F)  
3/1/2023 - 5/31/2023



Graphics Source: NOAA Regional Climate Centers

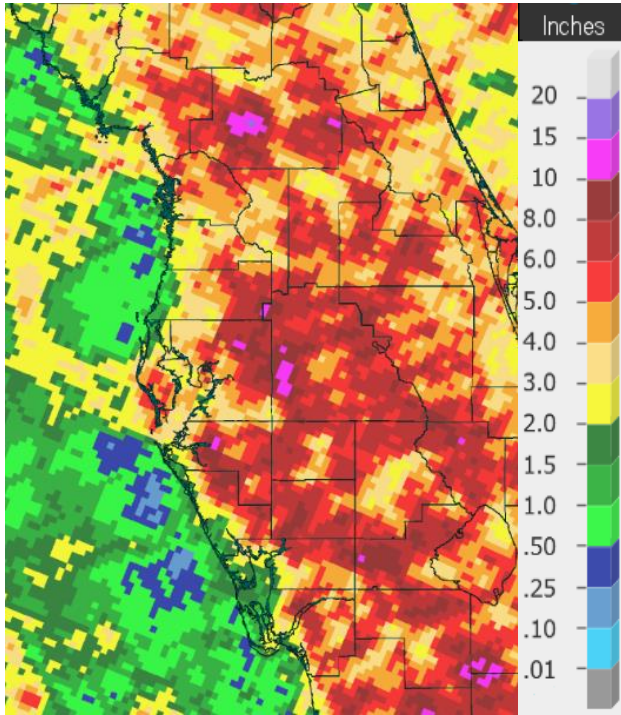
As for rainfall, March was very dry with less than 50 percent of normal rainfall across most of the region, with some areas near the coast seeing less than 10 percent of normal rainfall. April was not much better from around the Tampa Bay area northward along the Nature Coast while parts of the interior and Southwest Florida did see decent rainfall with some spots 200 to 300 percent of normal. As for May, the first half started rather dry, but during the third week an upper level trough combined with enough moisture and the sea breezes to bring much needed rainfall to most areas.

#### **MAY RAINFALL RANKINGS (inches)**

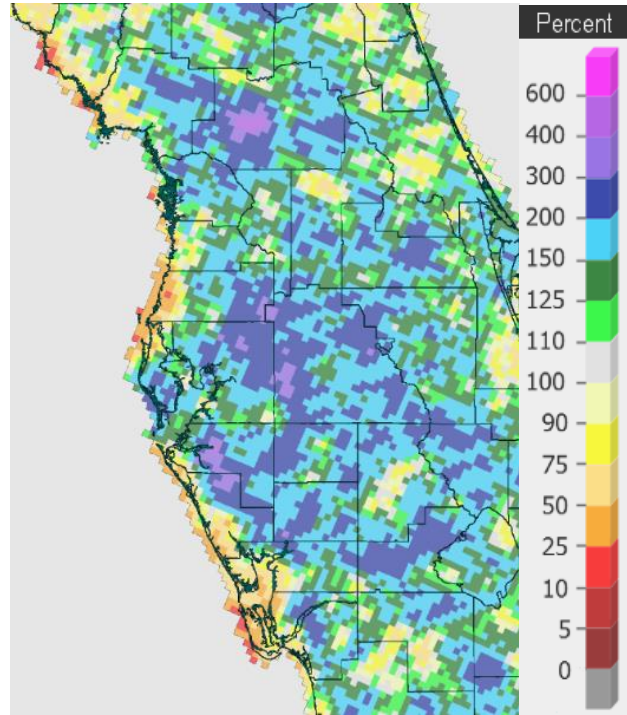
Location	Rank	May 2023 Rain Total	Normal May Rain	Dep fm Normal	Records Began
Lakeland Area	8th Wettest	8.75	3.80	+4.95	Jan 1915
St. Leo	15th Wettest	7.81	2.98	+4.83	Apr 1895
Fort Myers Area	33rd Wettest	5.36	3.46	+1.90	Jan 1902
Plant City	32nd Wettest	5.34	4.04	+1.30	Feb 1893
St. Petersburg Area	15th Wettest	4.85	2.26	+2.59	Jul 1914
Chiefland 5 ESE	17th Wettest (tie)	4.76	2.78	+1.98	Jul 1956
Tampa Area	33rd Wettest	4.11	2.60	+1.51	Apr 1890
Bartow	56th Wettest	4.06	2.95	+1.11	Jun 1892
Inverness 3 SE	25th Wettest (tie)	4.00	3.09	+0.91	Jul 1948
Punta Gorda Area	38th Wettest (tie)	3.87	3.26	+0.61	May 1914
Winter Haven Area	27th Wettest	3.69	2.67	+1.02	Mar 1941
Myakka River State Pk	43rd Driest	3.33	3.75	-0.42	Sep 1943
Archbold Bio Stn	21st Driest	3.14	4.36	-1.22	Jan 1969
Brooksville Area	61st Driest	3.04	3.35	-0.31	Jan 1892
Wauchula 2 N	35th Driest	2.55	3.51	-0.96	Jan 1933
Sarasota-Bradenton Area	60th Driest	2.27	2.58	-0.31	Jan 1911
Venice	23rd Driest	1.43	3.25	-1.82	May 1955
Tarpon Springs	14th Driest	0.31	2.35	-2.04	Jan 1892

#### **SPRING RAINFALL RANKINGS (inches)**

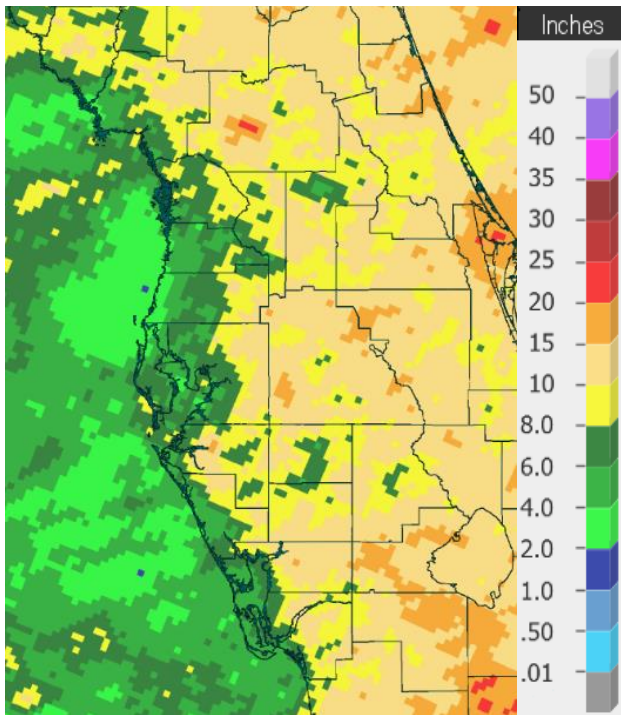
Location	Rank	Spring 2023 Rain Total	Normal Spr Rain	Dep fm Normal	Records Began
Lakeland Area	35th Wettest	11.44	9.68	+1.76	Jan 1915
Punta Gorda Area	22nd Wettest	10.98	7.77	+3.21	May 1914
St. Leo	52nd Wettest	10.76	9.22	+1.54	Apr 1895
Chiefland 5 ESE	38th Wettest	9.68	9.56	+0.12	Jul 1956
Plant City	69th Driest	9.57	9.70	-0.13	Feb 1893
Fort Myers Area	36th Wettest	9.45	7.97	+1.48	Jan 1902
Archbold Bio Stn	25th Driest	9.28	9.77	-0.49	Jan 1969
Bartow	51st Driest	8.37	8.51	-0.14	Jun 1892
Winter Haven Area	26th Driest	6.75	8.21	-1.46	Mar 1941
Inverness 3 SE	19th Driest	6.13	9.07	-2.94	Jul 1948
Sarasota-Bradenton Area	39th Driest	6.08	7.89	-1.81	Jan 1911
St. Petersburg Area	35th Driest	5.68	6.77	-1.09	Jul 1914
Tampa Area	42nd Driest	5.34	7.67	-2.33	Apr 1890
Myakka River State Pk	19th Driest	5.07	9.73	-4.66	Sep 1943
Brooksville Area	20th Driest (tie)	4.72	8.19	-3.47	Jan 1892
Wauchula 2 N	7th Driest	4.05	9.42	-5.37	Jan 1933
Venice	10th Driest	3.59	8.69	-5.10	May 1955
Tarpon Springs	5th Driest	1.65	8.12	-6.47	Jan 1892



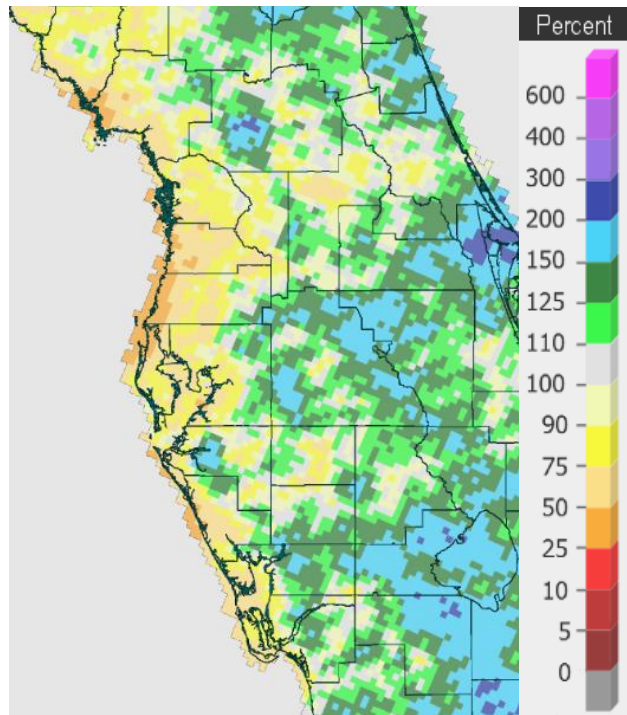
**May 2023 Rainfall**



**Percent of Normal**



**March 1 – May 31, 2023 Rainfall**



**Percent of Normal**

On the following pages are tables of the Top Ten Warmest, Coolest, Wettest, and Driest Mays and Springs at some official NWS locations, which includes the average/total for this May and Spring 2023 (March/April/May) where available, and the 1991-2020 Normal (average) temperature and rainfall.

**Chiefland 5 ESE (Records began July 1956):**

Warmest Mays	Coollest Mays	Wettest Mays	Driest Mays
1 78.5 in 1991	1 72.3 in 1992	1 13.14 in 1976	1 0.00 in 2021
2 78.1 in 2019	2 72.5 in 2013	2 7.50 in 2010	0.00 in 2001
3 77.2 in 2017	72.5 in 2005	3 6.99 in 1959	3 0.05 in 2000
77.2 in 1959	72.5 in 1988	4 6.93 in 1966	4 0.23 in 2008
5 77.0 in 1995	5 72.6 in 1967	5 6.87 in 2014	5 0.26 in 1965
6 76.9 in 2015	72.6 in 1960	6 6.82 in 1969	6 0.62 in 1985
76.9 in 1975	7 72.8 in 2007	7 6.72 in 2018	7 0.68 in 1994
8 76.7 in 2012	72.8 in 2006	8 6.65 in 2005	8 0.76 in 2007
9 76.6 in 2018	9 72.9 in 1971	9 5.99 in 1991	9 0.82 in 1998
76.6 in 1990	10 73.0 in 2001	10 5.72 in 1980	0.82 in 1988
...	...	...	
<b>37 74.3 in 2023</b>	<b>26 74.3 in 2023</b>	<b>17 4.76 in 2023</b>	
74.3 in 1999	74.3 in 1999	4.76 in 1967	
74.3 in 1986	74.3 in 1986		
74.3 in 1977	74.3 in 1977		

Normal Temperature for May at CHIF1 = 74.5°

Normal Rainfall for May at CHIF1 = 2.78 in.

-----

Warmest Springs	Coollest Springs	Wettest Springs	Driest Springs
1 73.4 in 2015	1 65.8 in 2005	1 24.94 in 1959	1 2.69 in 2007
2 72.1 in 2020	2 66.0 in 1969	2 23.30 in 1982	2 2.92 in 2000
3 72.0 in 1991	3 66.4 in 1960	3 21.65 in 1991	3 3.71 in 2006
4 71.7 in 2012	4 66.5 in 2013	4 19.46 in 2014	4 4.66 in 2002
5 71.3 in 2017	5 66.8 in 1993	5 19.45 in 1957	5 4.71 in 1989
6 70.8 in 2022	66.8 in 1971	6 19.41 in 2005	6 4.77 in 2004
70.8 in 2019	7 66.9 in 1966	7 18.33 in 1996	7 5.29 in 2017
70.8 in 2002	8 67.0 in 1996	8 16.64 in 2018	8 5.46 in 1994
9 70.5 in 2003	9 67.2 in 2001	9 16.28 in 1983	9 5.72 in 2019
10 70.4 in 1995	67.2 in 1962	10 16.23 in 1976	10 5.75 in 1998
11 70.2 in 1989			5.75 in 1967
70.2 in 1982		...	...
13 70.1 in 1990		<b>38 9.68 in 2023</b>	<b>26 9.68 in 2023</b>
70.1 in 1965			
<b>15 70.0 in 2023</b>			
70.0 in 2011			

Normal Temperature for Spring at CHIF1 = 68.6°

Normal Rainfall for Spring at CHIF1 = 9.56 in

-----

**Inverness 3 SE (Records began July 1948):**

Warmest Mays	Coollest Mays	Wettest Mays	Driest Mays
1 80.0 in 1953	1 71.6 in 1992	1 11.97 in 1976	1 0.04 in 2008
2 79.7 in 2010	2 72.3 in 1988	2 11.48 in 2009	2 0.20 in 2000
3 79.1 in 1975	3 72.6 in 1993	3 10.61 in 2018	3 0.29 in 2021
4 78.7 in 1962	4 73.4 in 2005	4 10.59 in 1959	4 0.40 in 1965
5 78.4 in 2019	5 73.6 in 2006	5 8.79 in 1979	5 0.42 in 1994
6 78.2 in 1991	6 73.7 in 1997	6 8.11 in 2012	6 0.49 in 1998
7 78.1 in 2022	7 73.9 in 2001	7 7.71 in 2014	7 0.54 in 2007
78.1 in 2015	8 74.0 in 2007	8 7.33 in 1984	8 0.74 in 1997
78.1 in 1959	74.0 in 1999	9 7.27 in 1952	0.74 in 1977
10 78.0 in 1955	10 74.2 in 1982	10 6.92 in 1982	10 0.78 in 2001
	74.2 in 1976	...	...
...	...	<b>25 4.00 in 2023</b>	<b>50 4.00 in 2023</b>
<b>36 76.1 in 2023</b>	<b>31 76.1 in 2023</b>	4.00 in 1969	4.00 in 1969
76.1 in 1987	76.1 in 1987		
76.1 in 1970	76.1 in 1970		

Normal Temperature for May at INVF1 = 74.8°  
 Normal Rainfall for May at INVF1 = 3.09 in.

-----

Warmest Springs	Coollest Springs	Wettest Springs	Driest Springs
1 74.0 in 2015	1 66.3 in 1993	1 24.95 in 1959	1 1.96 in 1967
2 73.7 in 1953	2 66.9 in 1992	2 21.14 in 1960	2 2.76 in 1977
3 73.5 in 1967	3 67.1 in 1996	3 20.75 in 1982	3 3.22 in 2000
4 73.1 in 1963	4 67.2 in 1988	4 18.07 in 2022	4 3.60 in 1994
<b>5 73.0 in 2023</b>	5 67.8 in 2018	5 17.63 in 2018	5 4.03 in 2013
73.0 in 2020	6 68.1 in 2001	6 17.36 in 2014	6 4.05 in 2007
7 72.9 in 2012	7 68.3 in 2007	7 17.22 in 1991	7 4.24 in 2019
8 72.5 in 2022	8 68.7 in 2004	8 15.78 in 1987	8 4.47 in 2004
72.5 in 1965	68.7 in 1999	15.74 in 1976	9 4.63 in 1955
10 72.2 in 1974	10 69.1 in 2006	10 15.34 in 1958	10 4.67 in 1999
		...	...
		<b>55 6.13 in 2023</b>	<b>19 6.13 in 2023</b>

Normal Temperature for Spring at INVF1 = 68.8°  
 Normal Rainfall for Spring at INVF1 = 9.07 in.

-----

**Brooksville Area (Records began January 1892):**

Warmest Mays	Coollest Mays	Wettest Mays	Driest Mays
1 80.7 in 1905	1 72.5 in 2005	1 16.27 in 1976	1 Trace in 1977
2 80.6 in 1927	2 72.8 in 1917	2 15.57 in 2009	2 0.19 in 1926
3 80.3 in 1933	3 73.1 in 2001	3 12.25 in 2018	3 0.23 in 1949
4 79.6 in 1995	4 73.2 in 1924	4 12.20 in 1923	4 0.29 in 2000
5 79.4 in 1899	73.2 in 1920	5 9.54 in 2014	5 0.45 in 1951
6 79.2 in 1929	6 73.4 in 1923	6 9.25 in 1906	6 0.47 in 1948
7 79.1 in 1962	7 73.6 in 1999	7 9.15 in 1912	7 0.56 in 2021
8 79.0 in 1975	8 73.7 in 1925	8 8.71 in 1921	8 0.57 in 1908
79.0 in 1902	9 73.8 in 2006	9 8.18 in 1957	9 0.60 in 1899
10 78.7 in 2019	73.8 in 1954	10 7.92 in 1919	10 0.68 in 1910
78.7 in 1953		...	...
78.7 in 1935		<b>70 3.04 in 2023</b>	<b>61 3.04 in 2023</b>
...	...		
<b>58 76.1 in 2023</b>	<b>55 76.1 in 2023</b>		
76.1 in 2003	76.1 in 2003		
76.1 in 1973	76.1 in 1973		
76.1 in 1922	76.1 in 1922		

Normal Temperature for May at BKV = 75.3°

Normal Rainfall for May at BKV = 3.35 in.

-----

Warmest Springs	Coollest Springs	Wettest Springs	Driest Springs
1 75.2 in 1929	1 66.1 in 2005	1 22.97 in 1959	1 1.20 in 1898
2 75.0 in 1945	2 67.6 in 2004	2 21.84 in 1960	2 1.57 in 2000
3 74.4 in 1927	67.6 in 1926	3 21.28 in 1991	3 2.20 in 1977
4 74.3 in 2015	67.6 in 1892	4 20.07 in 1928	2.20 in 1945
74.3 in 1935	5 67.8 in 1924	5 19.69 in 1976	5 2.35 in 2006
6 74.2 in 2020	6 68.0 in 2010	6 19.67 in 1900	6 2.58 in 1910
7 74.0 in 1948	7 68.1 in 1998	7 18.83 in 2018	7 3.25 in 1908
8 73.6 in 1938	8 68.2 in 2013	8 18.78 in 1982	8 3.56 in 1967
9 73.3 in 1994	9 68.3 in 2001	9 18.54 in 1987	9 3.65 in 2017
10 73.2 in 1905	68.3 in 1999	10 18.26 in 1957	10 3.67 in 1897
<b>11 73.1 in 2023</b>			...
73.1 in 1967			<b>20 4.72 in 2023</b>
			4.72 in 1914

Normal Temperature for Spring at BKV = 69.6°

Normal Rainfall for Spring at BKV = 8.19 in.



**St. Leo (Records began April 1895):**

Warmest Mays	Coollest Mays	Wettest Mays	Driest Mays
1 81.3 in 1995	1 71.7 in 1928	1 16.81 in 1979	1 0.03 in 2000
2 80.6 in 1899	2 72.3 in 1921	2 14.37 in 1923	2 0.08 in 2021
3 80.2 in 1953	3 73.0 in 1923	3 11.64 in 2009	3 0.15 in 2008
4 80.1 in 2003	4 73.1 in 1931	4 10.33 in 1976	4 0.17 in 1953
5 79.7 in 2000	5 73.6 in 1917	5 10.06 in 2018	5 0.28 in 1965
6 79.6 in 1896	6 73.7 in 1940	6 9.43 in 1919	6 0.40 in 1985
7 79.4 in 1962	7 73.8 in 1920	7 9.23 in 1963	7 0.51 in 1914
8 79.3 in 1985	8 73.9 in 1992	8 8.64 in 1905	8 0.78 in 2001
79.3 in 1902	9 74.1 in 1918	9 8.63 in 1957	9 0.84 in 1998
10 79.2 in 2019	10 74.2 in 1903	10 8.28 in 1921	10 0.86 in 1927
79.2 in 1975		11 8.14 in 1909	
...	...	12 8.00 in 1938	
<b>71 76.5 in 2023</b>	<b>57 76.5 in 2023</b>	13 7.86 in 1922	
76.5 in 1964	76.5 in 1964	14 7.83 in 1978	
76.5 in 1932	76.5 in 1932	<b>15 7.81 in 2023</b>	

Normal Temperature for May at STLF1 = 76.7°

Normal Rainfall for May at STLF1 = 2.98 in.

-----

Warmest Springs	Coollest Springs	Wettest Springs	Driest Springs
1 75.2 in 1948	1 65.6 in 1931	1 24.63 in 1987	1 1.12 in 2000
2 74.9 in 2002	2 67.9 in 1915	2 21.67 in 1979	2 1.83 in 1967
3 74.8 in 1945	3 68.0 in 1928	3 21.01 in 1960	3 2.87 in 1898
4 74.7 in 2003	4 68.5 in 1930	4 20.57 in 1900	4 3.20 in 1904
5 74.6 in 2015	5 69.0 in 1940	5 20.48 in 1959	5 3.32 in 1977
6 74.5 in 1908	6 69.2 in 1916	6 20.01 in 1953	6 3.96 in 1999
7 74.4 in 1995	7 69.3 in 2013	7 19.13 in 1991	7 4.03 in 1908
8 74.2 in 2020	69.3 in 1971	8 18.77 in 1928	8 4.10 in 1914
74.2 in 1953	69.3 in 1969	9 18.34 in 1957	9 4.19 in 1910
10 74.1 in 1994	10 69.4 in 1992	10 17.99 in 2018	10 4.46 in 2006
11 73.9 in 2000	69.4 in 1926	...	...
73.9 in 1991	69.4 in 1920	<b>52 10.76 in 2023</b>	<b>78 10.76 in 2023</b>
73.9 in 1975			
<b>14 73.8 in 2023</b>			
73.8 in 1985			

Normal Temperature for Spring at STLF1 = 71.5°

Normal Rainfall for Spring at STLF1 = 9.22 in.

-----

**Tarpon Springs (Records began January 1892):**

Warmest Mays	Coollest Mays	Wettest Mays	Driest Mays
1 82.1 in 1995	1 71.7 in 1939	1 15.17 in 1979	1 0.00 in 2001
2 80.6 in 2019	2 72.6 in 1897	2 10.14 in 1991	0.00 in 2000
80.6 in 1991	3 72.8 in 1917	3 10.13 in 1976	3 Trace in 1927
4 80.3 in 1933	4 73.6 in 1894	4 9.38 in 1946	4 0.01 in 2007
5 80.0 in 1996	5 74.0 in 1928	5 8.18 in 1921	5 0.03 in 1965
6 79.8 in 2010	6 74.1 in 1992	6 7.70 in 1969	6 0.08 in 2021
7 79.6 in 2003	74.1 in 1941	7 7.17 in 1957	7 0.11 in 1949
8 79.3 in 1953	74.1 in 1921	8 6.84 in 1915	8 0.13 in 1899
79.3 in 1943	74.1 in 1903	9 6.79 in 2018	9 0.14 in 1994
10 79.2 in 1994	74.1 in 1892	10 6.53 in 2012	10 0.15 in 1953
79.2 in 1990			11 0.23 in 1951
...	...		12 0.29 in 2008
<b>84 75.7 in 2023</b>	<b>42 75.7 in 2023</b>		0.29 in 1941
75.7 in 1982	75.7 in 1982		<b>14 0.31 in 2023</b>
75.7 in 1964	75.7 in 1964		
75.7 in 1926	75.7 in 1926		

Normal Temperature for May at TRPF1 = 77.6°  
 Normal Rainfall for May at TRPF1 = 2.35 in.

-----

Warmest Springs	Coollest Springs	Wettest Springs	Driest Springs
1 75.5 in 1948	1 66.9 in 1940	1 22.38 in 1959	1 0.97 in 1898
2 75.4 in 2020	2 67.5 in 1915	2 20.20 in 1979	2 1.40 in 2000
75.4 in 2015	3 68.0 in 1960	3 19.83 in 1991	3 1.43 in 2006
4 75.0 in 1995	68.0 in 1931	4 18.91 in 1987	4 1.47 in 1967
75.0 in 1991	5 68.3 in 1971	5 18.30 in 1957	<b>5 1.65 in 2023</b>
6 74.9 in 1929	6 68.7 in 1916	6 18.26 in 1942	6 1.86 in 1908
7 74.8 in 1997	7 68.8 in 1969	7 17.99 in 1960	7 2.81 in 1990
8 74.4 in 1994	68.8 in 1941	8 16.73 in 1900	8 2.82 in 1977
74.4 in 1945	9 68.9 in 1900	9 15.71 in 1983	9 2.83 in 1945
10 74.1 in 2019	10 69.0 in 1906	10 15.58 in 1931	10 3.21 in 1927
...	...		
<b>26 72.9 in 2023</b>	<b>98 72.9 in 2023</b>		
72.9 in 1946	72.9 in 1946		

Normal Temperature for Spring at TRPF1 = 72.2°  
 Normal Rainfall for Spring at TRPF1 = 8.12 in.

-----

**Tampa Area (Records began April 1890):**

Warmest Mays	Coollest Mays	Wettest Mays	Driest Mays
1 81.7 in 1995	1 73.8 in 1891	1 17.64 in 1979	1 Trace in 2001
2 81.6 in 2022	2 74.2 in 1992	2 9.41 in 1921	2 0.02 in 2000
81.6 in 2019	3 74.3 in 1928	3 9.11 in 2009	3 0.07 in 1994
4 81.5 in 1975	4 74.4 in 1982	4 8.54 in 2014	4 0.10 in 1992
5 81.2 in 1991	5 74.5 in 1897	5 8.13 in 1976	5 0.16 in 2021
6 81.1 in 2021	6 74.7 in 1940	6 7.73 in 2018	0.16 in 1941
7 81.0 in 2017	74.7 in 1917	7 7.55 in 1959	7 0.17 in 1973
8 80.9 in 2010	8 74.8 in 1921	8 7.21 in 1957	8 0.22 in 1985
9 80.7 in 2012	74.8 in 1903	9 6.92 in 1894	9 0.24 in 1989
10 80.5 in 2015	10 74.9 in 1923	10 6.88 in 1991	10 0.31 in 1940
80.5 in 1990		...	...
...		<b>33 4.11 in 2023</b>	<b>101 4.11 in 2023</b>
<b>17 79.6 in 2023</b>		4.11 in 1902	4.11 in 1902
79.6 in 1933			

Normal Temperature for May at TPA = 79.5°

Normal Rainfall for May at TPA = 2.60 in.

-----

Warmest Springs	Coollest Springs	Wettest Springs	Driest Springs
1 77.5 in 2022	1 68.3 in 1915	1 25.67 in 1959	1 0.61 in 1898
2 77.1 in 2015	2 68.5 in 1931	2 20.78 in 1957	2 0.86 in 2000
3 76.6 in 2012	68.5 in 1901	3 20.62 in 1979	3 1.29 in 1967
<b>4 76.3 in 2023</b>	4 68.8 in 1969	4 19.91 in 1930	4 2.17 in 1945
5 76.2 in 2020	5 69.1 in 1971	5 17.54 in 1931	5 2.32 in 1977
6 76.0 in 2017	6 69.2 in 1993	6 15.26 in 1987	6 2.46 in 2006
7 75.4 in 1991	7 69.4 in 1992	7 14.45 in 1983	7 2.64 in 1999
75.4 in 1945	69.4 in 1926	8 14.38 in 2014	8 2.74 in 1989
9 75.3 in 2021	9 69.6 in 1983	9 14.31 in 1924	9 2.98 in 1985
10 75.3 in 2002	69.6 in 1940	10 13.73 in 1960	10 3.06 in 2017
	69.6 in 1916	...	...
	69.6 in 1891	<b>92 5.34 in 2023</b>	<b>42 5.34 in 2023</b>

Normal Temperature for Spring at TPA = 74.0°

Normal Rainfall for Spring at TPA = 7.67 in.

-----

**St Petersburg Area (Records began July 1914) :**

Warmest Mays	Coollest Mays	Wettest Mays	Driest Mays
1 82.0 in 2010	1 75.3 in 1928	1 10.64 in 1959	1 0.00 in 1953
2 81.5 in 2015	75.3 in 1921	2 9.68 in 2018	2 Trace in 2007
3 81.3 in 1995	3 75.4 in 1992	3 9.21 in 1979	3 0.02 in 2000
4 81.2 in 1933	75.4 in 1917	4 8.17 in 1976	4 0.04 in 2001
5 80.9 in 2003	5 75.7 in 1940	5 7.85 in 1925	5 0.05 in 1941
80.9 in 1991	6 75.8 in 1954	6 7.16 in 1991	6 0.12 in 2021
7 80.8 in 1975	7 76.2 in 1920	7 7.11 in 1915	7 0.18 in 1945
80.8 in 1935	8 76.4 in 1993	8 7.05 in 1921	8 0.19 in 1973
9 80.4 in 2012	9 76.5 in 1988	9 6.99 in 2009	9 0.22 in 1992
10 80.3 in 2021	10 76.6 in 1960	10 6.08 in 1957	10 0.24 in 1994
80.3 in 2000	76.6 in 1951	11 6.00 in 1969	
...		12 5.23 in 1930	
<b>22 79.6 in 2023</b>		13 5.17 in 1939	
79.6 in 2004		14 5.03 in 1982	
79.6 in 1962		<b>15 4.85 in 2023</b>	
79.6 in 1957			
79.6 in 1927			

Normal Temperature for May at SPG = 79.4°

Normal Rainfall for May at SPG = 2.26 in.

-----

Warmest Springs	Coollest Springs	Wettest Springs	Driest Springs
1 77.7 in 2015	1 69.5 in 1915	1 26.45 in 1959	1 0.88 in 1945
2 76.7 in 2020	2 70.1 in 1931	2 17.88 in 1957	2 1.42 in 2000
76.7 in 2012	3 70.2 in 1993	3 17.20 in 1930	3 1.53 in 2006
<b>4 76.5 in 2023</b>	70.2 in 1983	4 17.18 in 1931	4 1.73 in 1977
5 75.9 in 1948	5 70.7 in 1996	5 16.31 in 1987	5 2.48 in 1967
75.9 in 1935	70.7 in 1940	6 15.65 in 1982	6 2.73 in 2007
75.9 in 1929	70.7 in 1926	7 15.17 in 1960	7 2.84 in 1938
8 75.8 in 2022	8 70.8 in 1916	8 14.50 in 2003	8 2.85 in 1949
75.8 in 2002	9 71.0 in 1992	9 14.03 in 1991	9 2.88 in 1999
10 75.6 in 2011	10 71.1 in 1924	10 13.98 in 1958	10 2.96 in 2002
		...	...
		<b>75 5.68 in 2023</b>	<b>35 5.68 in 2023</b>

Normal Temperature for Spring at SPG = 74.2°

Normal Rainfall for Spring at SPG = 6.77 in.

-----

**Plant City (Temperature Records began September 1892/Rainfall Records began February 1893):**

Warmest Mays	Coollest Mays	Wettest Mays	Driest Mays
1 82.0 in 2019	1 71.3 in 1928	1 16.44 in 2009	1 0.01 in 2001
2 80.8 in 2017	2 71.9 in 1931	2 14.27 in 2018	2 0.14 in 2000
3 80.4 in 2022	3 72.0 in 1940	3 11.77 in 1991	3 0.29 in 1953
4 80.1 in 1915	4 72.4 in 1941	4 11.68 in 1979	4 0.50 in 1992
5 80.0 in 1995	5 73.0 in 1925	5 10.64 in 1923	5 0.58 in 1981
6 79.9 in 2021	6 73.6 in 1992	6 10.14 in 1957	6 0.62 in 2007
7 79.8 in 1975	7 73.9 in 1932	7 9.10 in 1905	7 0.67 in 1985
8 79.6 in 2010	8 74.0 in 1979	8 9.04 in 1976	0.67 in 1948
9 79.5 in 1991	74.0 in 1960	9 8.72 in 1907	9 0.72 in 1898
79.5 in 1953	10 74.1 in 1901	10 8.41 in 2022	10 0.75 in 1945
<b>11 79.4 in 2023</b>		...	...
		<b>32 5.34 in 2023</b>	<b>95 5.34 in 2023</b>

Normal Temperature for May at PLCF1 = 78.7°  
 Normal Rainfall for May at PLCF1 = 4.04 in.

---

Warmest Springs	Coollest Springs	Wettest Springs	Driest Springs
<b>1 76.8 in 2023</b>	1 64.9 in 1931	1 26.28 in 1959	1 1.56 in 1898
2 76.7 in 2020	2 66.8 in 1901	2 23.68 in 1957	2 1.91 in 1977
3 76.2 in 2015	3 67.0 in 1932	3 20.67 in 1991	3 2.30 in 1981
4 75.8 in 2022	4 67.9 in 1940	4 19.68 in 1960	4 2.40 in 1908
5 75.9 in 2019	5 68.0 in 1941	5 19.42 in 1987	5 2.61 in 1945
6 75.3 in 2021	6 68.1 in 1930	6 19.38 in 1900	6 2.62 in 2017
7 75.1 in 1912	7 68.9 in 1925	7 19.25 in 1933	7 3.13 in 1902
8 75.0 in 2017	8 69.0 in 1942	8 18.59 in 2009	8 3.29 in 1949
9 74.8 in 2016	69.0 in 1928	9 18.56 in 1930	9 3.47 in 1985
10 74.7 in 2012	10 69.1 in 1924	10 18.30 in 1931	10 3.61 in 1967
		...	...
		<b>56 9.57 in 2023</b>	<b>69 9.57 in 2023</b>

Normal Temperature for Spring at PLCF1 = 73.6°  
 Normal Rainfall for Spring at PLCF1 = 9.70 in.

---

**Lakeland (Records began January 1915):**

Warmest Mays	Coollest Mays	Wettest Mays	Driest Mays
1 82.9 in 1995	1 73.4 in 1928	1 19.19 in 2018	1 0.13 in 1953
2 81.0 in 1996	2 74.0 in 2007	2 16.03 in 1979	2 0.34 in 2021
3 80.8 in 2019	3 74.4 in 1941	3 14.95 in 2009	3 0.37 in 2008
4 80.7 in 1991	74.4 in 1921	4 10.83 in 1923	4 0.44 in 2001
5 80.6 in 2010	5 74.8 in 1923	5 10.65 in 1991	5 0.50 in 1985
6 80.5 in 1990	6 75.1 in 1982	6 9.68 in 1957	6 0.55 in 2000
7 80.4 in 1994	75.1 in 1970	7 9.10 in 1968	0.55 in 1965
8 80.1 in 1933	8 75.2 in 1940	<b>8 8.75 in 2023</b>	8 0.63 in 1986
9 80.0 in 2017	75.2 in 1917	9 8.45 in 1922	9 0.89 in 1960
10 79.9 in 2015	10 75.4 in 1972	10 8.21 in 1921	10 0.92 in 1945
79.9 in 1935	75.4 in 1960		
...	75.4 in 1931		
<b>26 78.3 in 2023</b>	75.4 in 1920		
78.3 in 2002			
78.3 in 1987			
78.3 in 1978			
78.3 in 1956			

Normal Temperature for May at LLDF1 = 78.2°  
 Normal Rainfall for May at LLDF1 = 3.80 in.

-----

Warmest Springs	Coollest Springs	Wettest Springs	Driest Springs
1 76.3 in 2015	1 69.1 in 1941	1 24.87 in 1959	1 2.28 in 1945
2 76.1 in 2020	2 69.3 in 1915	2 23.85 in 2018	2 3.02 in 1981
<b>3 76.0 in 2023</b>	3 69.5 in 1960	3 21.98 in 1981	3 3.16 in 2000
76.0 in 1995	4 69.6 in 1969	4 21.14 in 1957	4 3.32 in 1967
5 75.8 in 1994	5 69.8 in 1983	5 21.03 in 1979	5 3.40 in 2017
6 75.7 in 1991	69.8 in 1925	6 20.64 in 1934	6 3.75 in 1977
75.7 in 1935	7 69.9 in 1971	7 18.56 in 1982	7 3.89 in 2006
8 75.4 in 2022	8 70.0 in 2007	8 18.46 in 1987	8 4.03 in 1985
9 75.0 in 2012	9 70.2 in 1926	9 17.86 in 1931	9 4.45 in 1949
75.0 in 1989	70.2 in 1924	17.86 in 1930	10 4.47 in 2021
		...	...
		<b>35 11.44 in 2023</b>	<b>73 11.44 in 2023</b>

Normal Temperature for Spring at LLDF1 = 73.3°  
 Normal Rainfall for Spring at LLDF1 = 9.68 in.

-----

**Winter Haven Area (Records began March 1941) :**

Warmest Mays	Coollest Mays	Wettest Mays	Driest Mays
1 81.8 in 2019	1 74.3 in 1972	1 12.72 in 1957	1 0.03 in 2000
2 81.6 in 1995	2 74.5 in 1960	2 10.36 in 1982	2 0.05 in 2021
3 80.9 in 2015	3 74.6 in 1982	3 8.54 in 1943	3 0.49 in 1945
80.9 in 2010	4 74.9 in 1954	4 8.26 in 2009	4 0.57 in 1941
80.9 in 2003	5 75.1 in 1941	5 8.11 in 1976	5 0.58 in 1965
6 80.4 in 2022	6 75.3 in 1983	6 7.63 in 1946	6 0.71 in 2004
7 80.2 in 1990	7 75.4 in 1971	7 7.58 in 2018	7 0.80 in 1951
80.2 in 1989	8 75.5 in 1988	8 6.81 in 1947	8 0.81 in 1985
80.2 in 1953	75.5 in 1968	9 6.75 in 1975	9 0.84 in 1949
10 80.0 in 2017	10 75.7 in 2007	10 6.54 in 2016	10 0.88 in 1969
80.0 in 2012	75.7 in 1977	...	...
...	75.7 in 1973	<b>27 3.69 in 2023</b>	<b>55 3.69 in 2023</b>
<b>30 78.6 in 2023</b>	...		
78.6 in 1949	<b>48 78.6 in 2023</b>		
	78.6 in 1949		

Normal Temperature for May at GIF = 79.3°  
 Normal Rainfall for May at GIF = 2.67 in.

---

Warmest Springs	Coollest Springs	Wettest Springs	Driest Springs
1 77.7 in 2015	1 69.1 in 1983	1 23.21 in 1957	1 1.61 in 2000
2 76.5 in 2020	2 69.5 in 1960	2 21.81 in 1959	2 2.25 in 1945
3 76.1 in 1948	3 69.8 in 1971	3 20.49 in 1982	3 2.61 in 2017
4 76.0 in 2022	69.8 in 1969	4 20.32 in 1960	4 2.94 in 1981
5 75.9 in 1991	5 70.1 in 1941	5 18.23 in 1947	5 3.77 in 2007
75.9 in 1945	6 70.4 in 1987	6 15.16 in 1991	6 3.78 in 1967
7 75.7 in 1989	70.4 in 1968	7 14.42 in 2010	7 4.01 in 2021
<b>8 75.6 in 2023</b>	8 70.6 in 1993	8 13.59 in 1970	8 4.08 in 2015
9 75.5 in 2012	70.6 in 1981	13.59 in 1973	9 4.17 in 2006
10 75.4 in 2019	10 70.8 in 2013	10 13.44 in 1958	10 4.39 in 1965
	70.8 in 2005	...	...
	70.8 in 1988	<b>55 6.75 in 2023</b>	<b>26 6.75 in 2023</b>

Normal Temperature for Spring at GIF = 74.1°  
 Normal Rainfall for Spring at GIF = 8.21 in.

---

**Bartow (Records began June 1892) :**

Warmest Mays	Coollest Mays	Wettest Mays	Driest Mays
1 82.9 in 2015	1 73.3 in 1928	1 17.74 in 1923	1 0.02 in 1965
2 81.4 in 1995	2 73.5 in 1913	2 13.05 in 1979	2 0.25 in 1941
3 81.1 in 2014	3 73.8 in 1941	3 12.96 in 1957	3 0.36 in 1908
81.1 in 2003	4 74.3 in 1894	4 11.42 in 2009	4 0.40 in 1992
5 81.0 in 2012	5 74.5 in 1917	5 11.16 in 1905	5 0.45 in 1951
6 80.5 in 1905	6 74.6 in 1921	6 11.15 in 1930	6 0.52 in 2021
7 80.0 in 1990	7 74.7 in 1940	7 11.04 in 1976	7 0.72 in 1955
80.0 in 1975	74.7 in 1897	8 10.35 in 1921	8 0.75 in 1949
80.0 in 1953	9 74.8 in 1992	9 9.46 in 2018	9 0.87 in 1953
10 79.8 in 1991	10 74.9 in 1982	10 9.42 in 1932	10 0.91 in 2004
79.8 in 1933		...	...
79.8 in 1899		<b>56 4.06 in 2023</b>	<b>77 4.06 in 2023</b>
...	...		
<b>51 77.5 in 2023</b>	<b>71 77.5 in 2023</b>		
77.5 in 1987	77.5 in 1987		
77.5 in 1956	77.5 in 1956		
77.5 in 1908	77.5 in 1908		

Normal Temperature for May at BARF1 = 77.6°  
 Normal Rainfall for May at BARF1 = 2.95 in.

-----

Warmest Springs	Coollest Springs	Wettest Springs	Driest Springs
1 80.1 in 2015	1 67.8 in 1915	1 25.91 in 1959	1 2.34 in 1908
2 76.0 in 2003	2 68.2 in 1901	2 22.99 in 1930	2 2.48 in 1967
3 75.9 in 2012	3 69.3 in 1914	3 22.88 in 1957	3 2.55 in 2000
4 75.6 in 2014	4 69.6 in 1983	4 19.55 in 1934	4 3.27 in 1977
5 75.4 in 1908	5 70.1 in 1993	5 19.44 in 1923	5 3.53 in 1949
6 75.3 in 1945	6 70.5 in 1894	6 19.34 in 1905	3.53 in 1894
7 75.1 in 1991	70.5 in 1893	7 19.05 in 1947	7 3.55 in 2017
<b>8 74.9 in 2023</b>	8 70.6 in 1971	8 18.67 in 1991	8 3.57 in 1892
9 74.8 in 1995	70.6 in 1960	9 17.84 in 1979	9 3.70 in 2021
74.8 in 1948	70.6 in 1925	10 16.39 in 1937	10 3.77 in 1911
	70.6 in 1913	...	...
	70.6 in 1896	<b>80 8.37 in 2023</b>	<b>51 8.37 in 2023</b>

Normal Temperature for Spring at BARF1 = 72.6°  
 Normal Rainfall for Spring at BARF1 = 8.51 in.

-----



**Sarasota-Bradenton Area (Records began January 1911):**

Warmest Mays	Coollest Mays	Wettest Mays	Driest Mays
1 80.7 in 2019	1 71.8 in 1917	1 9.52 in 1996	1 0.00 in 1941
80.7 in 1995	2 72.9 in 1928	2 9.39 in 1991	2 Trace in 2007
3 79.6 in 2010	3 73.1 in 1940	3 9.34 in 1978	3 0.02 in 1953
4 79.5 in 1991	4 73.4 in 1911	4 9.26 in 1957	4 0.10 in 1951
79.5 in 1990	5 73.5 in 1931	5 9.05 in 1921	0.10 in 1945
6 79.4 in 2012	73.5 in 1921	6 8.56 in 1954	6 0.13 in 1973
7 78.9 in 2017	7 73.7 in 1960	7 8.18 in 1959	7 0.15 in 1992
8 78.8 in 2022	8 74.0 in 1924	8 7.52 in 1934	0.15 in 1952
9 78.7 in 2003	9 74.1 in 1926	9 7.05 in 2014	9 0.16 in 1967
10 78.6 in 2021	10 74.2 in 1992	10 6.97 in 2018	10 0.18 in 1994
<b>11 78.3 in 2023</b>	74.2 in 1923	...	...
78.3 in 2016		<b>54 2.27 in 2023</b>	<b>60 2.27 in 2023</b>
78.3 in 1950			
78.3 in 1946			

Normal Temperature for May at SRQ = 77.8°

Normal Rainfall for May at SRQ = 2.58 in.

-----

Warmest Springs	Coollest Springs	Wettest Springs	Driest Springs
<b>1 75.4 in 2023</b>	1 66.8 in 1931	1 25.80 in 1957	1 1.39 in 1967
75.4 in 2020	2 67.2 in 1915	2 17.97 in 1959	2 2.01 in 2006
3 75.2 in 2015	3 68.3 in 1916	3 17.92 in 1991	3 2.07 in 1977
4 75.1 in 2012	4 68.5 in 1940	4 16.60 in 1996	4 2.50 in 1945
5 75.0 in 2022	5 68.8 in 1941	5 16.55 in 1997	5 2.61 in 1981
6 74.5 in 2019	68.8 in 1926	6 15.97 in 1958	6 2.83 in 1974
7 74.4 in 2016	68.8 in 1924	7 15.17 in 1930	7 2.97 in 1956
8 74.3 in 1995	8 69.0 in 1983	8 14.97 in 1969	8 3.02 in 2007
9 74.0 in 1994	9 69.1 in 1971	9 14.76 in 2014	3.02 in 1949
10 73.9 in 2003	10 69.5 in 1914	10 14.20 in 1987	10 3.10 in 2000
73.9 in 2002		...	...
		<b>74 6.08 in 2023</b>	<b>39 6.08 in 2023</b>

Normal Temperature for Spring at SRQ = 72.9°

Normal Rainfall for Spring at SRQ = 7.89 in.

-----

**Myakka River State Park (Temperature Records began March 1956/  
Rainfall Records began September 1943):**

Warmest Mays	Coollest Mays	Wettest Mays	Driest Mays
1 81.3 in 1995	1 73.5 in 1960	1 15.06 in 2018	1 0.02 in 2007
2 80.1 in 2010	2 74.2 in 1992	2 12.81 in 1959	0.02 in 2000
3 79.9 in 2019	3 74.9 in 1988	3 9.17 in 2014	3 0.23 in 1985
4 79.8 in 2003	4 75.0 in 2001	4 8.85 in 1970	4 0.35 in 1953
5 79.4 in 1990	75.0 in 1993	5 7.95 in 1975	5 0.42 in 1945
6 79.3 in 1998	6 75.1 in 2013	6 7.92 in 2009	6 0.50 in 1955
7 79.2 in 1978	75.1 in 1963	7 7.73 in 2016	7 0.55 in 1994
8 79.0 in 1996	8 75.2 in 1972	8 7.55 in 1976	8 0.56 in 1973
9 78.9 in 2012	9 75.4 in 1970	9 6.02 in 1968	9 0.61 in 1951
78.9 in 1975	10 75.6 in 2020	10 5.59 in 1963	10 0.62 in 1949
	11 75.7 in 1977	...	...
	75.7 in 1961	<b>36 3.33 in 2023</b>	<b>43 3.33 in 2023</b>
	13 75.8 in 1962		
	75.8 in 1958		
	15 75.9 in 1968		
	<b>16 76.0 in 2023</b>		
	76.0 in 1983		
	76.0 in 1973		

Normal Temperature for May at MKCF1 = 77.4°  
Normal Rainfall for May at MKCF1 = 3.75 in.

-----

Warmest Springs	Coollest Springs	Wettest Springs	Driest Springs
1 75.5 in 2003	1 69.1 in 1960	1 23.31 in 1959	1 1.43 in 2006
2 75.4 in 1995	2 69.8 in 1971	2 18.47 in 1987	2 1.83 in 1945
3 74.9 in 1997	69.8 in 1962	3 18.06 in 1957	3 3.01 in 1989
4 74.1 in 2012	4 70.0 in 2013	4 18.02 in 2018	4 3.44 in 1981
74.1 in 1982	5 70.4 in 1986	5 17.63 in 1993	5 3.56 in 1955
74.1 in 1975	6 70.5 in 1983	6 16.55 in 1998	6 3.80 in 2004
7 74.0 in 2019	70.5 in 1958	7 16.43 in 2014	7 4.05 in 1978
74.0 in 1990	8 70.7 in 2005	8 15.59 in 1969	8 4.12 in 1950
9 73.8 in 1994	70.7 in 1988	9 15.18 in 1970	9 4.16 in 1971
10 73.6 in 2016	10 70.8 in 1959	10 14.48 in 1982	10 4.37 in 1953
<b>11 73.5 in 2023</b>		...	...
73.5 in 1999		<b>59 5.07 in 2023</b>	<b>19 5.07 in 2023</b>
73.5 in 1989			

Normal Temperature for Spring at MKCF1 = 72.6°  
Normal Rainfall for Spring at MKCF1 = 9.73 in.

-----

**Venice (Records began May 1955) :**

Warmest Mays	Coollest Mays	Wettest Mays	Driest Mays
1 82.7 in 2010	1 72.9 in 1988	1 13.39 in 2018	1 0.06 in 1994
2 81.8 in 1995	2 74.3 in 1960	2 8.57 in 1969	0.06 in 1989
3 81.3 in 2003	3 74.5 in 1981	3 7.73 in 2009	3 0.12 in 1995
4 80.8 in 2012	4 74.6 in 1980	4 7.70 in 1959	4 0.40 in 1972
5 80.2 in 2019	5 74.7 in 1977	5 6.41 in 1996	0.40 in 1967
6 79.8 in 2011	6 75.2 in 1973	6 5.86 in 1976	6 0.41 in 2007
7 78.9 in 1996	7 75.3 in 1963	7 5.61 in 1975	0.41 in 2001
8 78.8 in 1998	8 75.4 in 1983	8 5.13 in 1991	8 0.46 in 2008
<b>9 78.7 in 2023</b>	9 75.5 in 1970	9 5.12 in 2003	9 0.54 in 1999
78.7 in 2002	10 75.6 in 2005	10 4.98 in 1962	10 0.56 in 1973
		...	...
		<b>46 1.43 in 2023</b>	<b>23 1.43 in 2023</b>
		1.43 in 1979	1.43 in 1979

Normal Temperature for May at VNCF1 = 77.5°

Normal Rainfall for May at VNCF1 = 3.25 in.

-----

Warmest Springs	Coollest Springs	Wettest Springs	Driest Springs
1 76.4 in 2012	1 68.8 in 1988	1 21.37 in 1957	1 0.79 in 1967
<b>2 75.9 in 2023</b>	2 69.3 in 1962	2 16.90 in 1959	2 1.87 in 1981
75.9 in 2003	3 69.5 in 1993	3 16.33 in 1969	3 1.94 in 1974
4 75.8 in 2015	4 69.7 in 1960	4 16.16 in 2018	4 2.58 in 1963
5 75.4 in 2011	5 69.8 in 1987	5 16.05 in 1984	5 2.83 in 1971
6 75.1 in 1995	69.8 in 1983	6 15.10 in 1983	6 2.92 in 1977
7 74.9 in 1997	7 69.9 in 1986	7 14.79 in 1987	7 3.30 in 2006
8 74.7 in 2002	8 70.0 in 2005	8 13.99 in 1962	3.30 in 1989
9 74.6 in 2022	9 70.1 in 1981	9 13.92 in 1996	9 3.36 in 1979
10 74.5 in 2020	10 70.4 in 1971	10 13.86 in 1991	<b>10 3.59 in 2023</b>
74.5 in 1994	70.4 in 1958		

Normal Temperature for Spring at VNCF1 = 72.6°

Normal Rainfall for Spring at VNCF1 = 8.69 in.

-----

**Wauchula 2 N (Records began January 1933):**

Warmest Mays	Coollest Mays	Wettest Mays	Driest Mays
1 80.1 in 2009	1 73.0 in 1992	1 13.94 in 2018	1 0.00 in 2000
2 79.8 in 1975	2 73.1 in 2013	2 11.32 in 1954	2 0.01 in 1965
3 79.7 in 1995	3 74.1 in 2001	3 11.31 in 1957	3 0.29 in 1945
4 79.4 in 1990	4 74.3 in 1960	4 10.61 in 1963	4 0.30 in 2015
79.4 in 1933	74.3 in 1940	5 9.37 in 2009	5 0.43 in 1953
6 79.2 in 1935	6 74.4 in 2007	6 8.39 in 1976	6 0.48 in 2008
7 78.9 in 2008	74.4 in 1999	7 7.82 in 1968	7 0.55 in 1941
78.9 in 1991	8 74.5 in 1982	8 7.53 in 1934	8 0.56 in 1949
9 78.5 in 1946	9 74.6 in 1954	9 7.42 in 1972	9 0.65 in 1995
10 78.4 in 2019	10 74.7 in 2011	10 7.17 in 1939	10 0.70 in 2004
78.4 in 1978	74.7 in 1941	...	...
78.4 in 1967		<b>57 2.55 in 2023</b>	<b>35 2.55 in 2023</b>
...	...		
<b>44 76.5 in 2023</b>	<b>44 76.5 in 2023</b>		

Normal Temperature for May at WAUF1 = 76.3°  
 Normal Rainfall for May at WAUF1 = 3.51 in.

-----

Warmest Springs	Coollest Springs	Wettest Springs	Driest Springs
1 75.0 in 1945	1 67.6 in 2013	1 21.37 in 1947	1 0.69 in 1945
2 74.8 in 1935	2 68.8 in 2005	2 20.73 in 1957	2 0.85 in 1967
3 74.6 in 1975	3 69.0 in 2004	3 18.24 in 1998	3 1.90 in 2006
74.6 in 1948	69.0 in 1993	4 17.01 in 2018	4 2.25 in 2000
5 74.4 in 1991	5 69.1 in 1996	5 16.98 in 1962	5 2.40 in 2004
6 74.1 in 2009	69.1 in 1983	6 16.65 in 1954	6 2.42 in 2015
74.1 in 1938	7 69.4 in 1960	7 15.78 in 1958	<b>7 4.05 in 2023</b>
<b>8 74.0 in 2023</b>	8 69.8 in 2018	8 15.60 in 1934	8 4.34 in 1981
74.0 in 2015	69.8 in 2007	9 15.14 in 1959	9 4.60 in 1974
74.0 in 1939	10 69.9 in 2014	10 14.19 in 1982	10 4.72 in 1949
	69.9 in 1950		

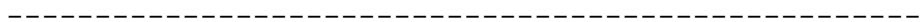
Normal Temperature for Spring at WAUF1 = 71.2°  
 Normal Rainfall for Spring at WAUF1 = 9.42 in.

-----

**Archbold Bio Stn (Records began January 1969):**

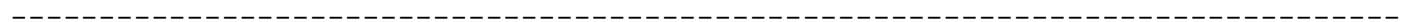
Warmest Mays	Coollest Mays	Wettest Mays	Driest Mays
1 79.1 in 1991	1 71.2 in 1992	1 14.46 in 2018	1 0.83 in 2021
2 79.0 in 1995	2 73.3 in 2013	2 7.99 in 2020	2 1.01 in 1983
3 78.5 in 2017	3 73.6 in 1988	3 7.61 in 1996	3 1.07 in 2015
4 78.2 in 2010	4 73.7 in 1993	4 7.23 in 2016	4 1.07 in 1993
5 78.1 in 2019	5 73.8 in 1982	5 7.00 in 1978	5 1.09 in 2005
6 78.0 in 1990	6 73.9 in 1983	6 6.97 in 1975	6 1.17 in 2000
78.0 in 1975	7 74.1 in 2005	7 6.96 in 1982	7 1.24 in 2007
8 77.4 in 2022	8 74.2 in 2006	8 6.75 in 2014	8 1.46 in 2006
9 77.3 in 2003	9 74.4 in 1977	9 6.53 in 1977	9 1.56 in 1986
10 77.2 in 2012	10 74.5 in 2007	10 6.52 in 1999	10 1.72 in 1990
77.2 in 2002	74.5 in 2001		...
...	74.5 in 1999		<b>21 3.14 in 2023</b>
<b>23 76.2 in 2023</b>	...		
<b>33 76.2 in 2023</b>	<b>33 76.2 in 2023</b>		

Normal Temperature for May at ACHF1 = 76.3°  
 Normal Rainfall for May at ACHF1 = 4.36 in.



Warmest Springs	Coollest Springs	Wettest Springs	Driest Springs
1 75.3 in 2015	1 67.8 in 1983	1 18.74 in 2018	1 2.36 in 2006
2 74.0 in 1991	2 68.2 in 1993	2 17.63 in 1982	2 3.56 in 1971
<b>3 73.7 in 2023</b>	3 68.4 in 2013	3 16.84 in 2010	3 4.08 in 2007
73.7 in 2022	4 68.5 in 1987	4 15.34 in 2003	4 4.22 in 1981
5 73.5 in 2020	5 68.6 in 1992	5 14.26 in 1984	5 4.85 in 1990
73.5 in 2003	6 68.7 in 2005	6 14.01 in 1970	6 4.93 in 2002
73.5 in 1995	68.7 in 1986	7 13.53 in 1996	7 4.96 in 2017
8 73.3 in 1975	8 69.1 in 2010	8 13.41 in 1969	8 5.09 in 2000
9 73.1 in 2017	69.1 in 1988	9 12.51 in 1991	9 6.60 in 2009
73.1 in 2002	10 69.3 in 2004	10 12.24 in 1973	10 6.73 in 2022
		...	...
		<b>31 9.28 in 2023</b>	<b>25 9.28 in 2023</b>

Normal Temperature for Spring at ACHF1 = 71.7°  
 Normal Rainfall for Spring at ACHF1 = 9.77 in.



**Punta Gorda Area (Records began May 1914) :**

Warmest Mays	Coollest Mays	Wettest Mays	Driest Mays
1 80.9 in 1953	1 74.0 in 1917	1 15.98 in 2018	1 0.01 in 1927
2 80.7 in 1946	2 74.1 in 1928	2 10.13 in 1946	2 0.07 in 1992
3 80.5 in 1995	3 74.9 in 1992	3 9.45 in 1991	3 0.40 in 1965
4 80.2 in 1991	4 75.0 in 1916	4 9.27 in 1959	4 0.41 in 2000
5 79.9 in 2012	5 75.1 in 1920	5 8.24 in 1968	5 0.42 in 2004
79.9 in 1933	6 75.2 in 2001	6 8.20 in 1963	6 0.45 in 1953
7 79.7 in 2010	75.2 in 1970	7 7.77 in 1972	7 0.54 in 2001
79.7 in 1962	75.2 in 1925	8 7.34 in 1979	0.54 in 1967
9 79.6 in 1956	9 75.6 in 1977	9 7.29 in 1923	9 0.66 in 1998
10 79.5 in 1935	75.6 in 1941	10 7.18 in 1932	0.66 in 1941
...		...	...
<b>28 78.5 in 2023</b>		<b>38 3.87 in 2023</b>	<b>70 3.87 in 2023</b>
78.5 in 2011		3.87 in 1938	3.87 in 1938

Normal Temperature for May at PGD = 77.9°

Normal Rainfall for May at PGD = 3.26 in.

-----

Warmest Springs	Coollest Springs	Wettest Springs	Driest Springs
1 77.5 in 1945	1 68.3 in 1915	1 19.21 in 1957	1 0.69 in 1967
2 76.5 in 1948	2 68.8 in 1916	2 18.61 in 1947	2 1.20 in 2006
3 76.1 in 1953	3 69.4 in 1931	3 17.66 in 2018	3 1.82 in 2000
4 76.0 in 1946	4 70.2 in 1971	4 17.41 in 1930	4 2.10 in 1971
<b>5 75.9 in 2023</b>	5 70.5 in 1941	5 15.87 in 1970	5 2.14 in 1981
6 75.7 in 1944	6 70.8 in 2005	6 15.85 in 2010	6 2.24 in 2007
7 75.6 in 2015	7 70.9 in 1993	7 15.70 in 1959	7 2.27 in 1945
75.6 in 1991	70.9 in 1969	8 14.94 in 2003	8 3.31 in 1935
9 75.2 in 2022	9 71.1 in 2010	9 14.42 in 1931	9 3.45 in 1975
10 75.1 in 1994	71.1 in 2004	10 14.14 in 1991	10 3.55 in 1974
	71.1 in 1983	...	
		<b>22 10.98 in 2023</b>	

Normal Temperature for Spring at PGD = 73.2°

Normal Rainfall for Spring at PGD = 7.77 in.

-----

**Fort Myers Area (Records began January 1902) :**

Warmest Mays	Coollest Mays	Wettest Mays	Driest Mays
1 82.0 in 1995	1 74.3 in 1917	1 12.77 in 2018	1 0.04 in 2021
<b>2 81.3 in 2023</b>	2 74.5 in 1941	2 10.32 in 1968	2 0.20 in 2001
3 81.2 in 2010	3 74.8 in 1921	3 8.73 in 1980	3 0.34 in 1994
4 81.1 in 2012	4 74.9 in 1928	4 8.67 in 2022	0.34 in 1962
5 80.8 in 1991	5 75.0 in 1970	5 8.49 in 1925	5 0.41 in 1953
6 80.7 in 2021	6 75.1 in 1903	8.49 in 1911	6 0.47 in 2004
80.7 in 1975	7 75.3 in 1940	7 8.48 in 1991	7 0.50 in 1964
8 80.6 in 2017	75.3 in 1931	8 8.42 in 1922	8 0.54 in 2010
9 80.5 in 2019	75.3 in 1918	9 8.05 in 1989	9 0.62 in 1988
80.5 in 2008	10 75.5 in 1925	10 7.97 in 1957	0.62 in 1983
80.5 in 2003		...	...
		<b>33 5.36 in 2023</b>	<b>89 5.36 in 2023</b>

Normal Temperature for May at FMY = 79.3°

Normal Rainfall for May at FMY = 3.46 in.

-----

Warmest Springs	Coollest Springs	Wettest Springs	Driest Springs
<b>1 78.5 in 2023</b>	1 69.4 in 1931	1 24.94 in 1970	1 1.89 in 1945
2 77.9 in 2022	2 70.0 in 1915	2 18.71 in 1958	2 2.18 in 1967
77.9 in 2015	3 70.2 in 1941	3 18.23 in 1947	3 2.36 in 2006
4 77.8 in 2020	4 70.5 in 1983	4 17.77 in 1930	4 2.44 in 1902
5 77.0 in 2012	5 70.8 in 1960	5 16.85 in 1933	5 2.54 in 1974
6 76.9 in 1997	6 71.1 in 1971	6 15.70 in 1941	6 2.69 in 2001
7 76.6 in 1991	71.1 in 1916	7 15.39 in 1957	7 3.37 in 1953
8 76.4 in 2002	71.1 in 1910	8 14.93 in 2022	8 3.42 in 1964
9 76.3 in 2003	9 71.2 in 1940	9 14.62 in 1991	9 3.45 in 1927
10 76.2 in 2011	71.2 in 1926	10 14.26 in 2018	10 3.93 in 2017
76.2 in 1995		...	...
76.2 in 1994		<b>36 9.45 in 2023</b>	<b>87 9.45 in 2023</b>

Normal Temperature for Spring at FMY = 74.8°

Normal Rainfall for Spring at FMY = 7.97 in.

-----

For more Climate information visit our web site at the following link:  
<http://www.weather.gov/tampabay> and then go to the Climate and Past Weather  
 drop down menu above the graphical forecast images.