



NOAA - National Weather Service

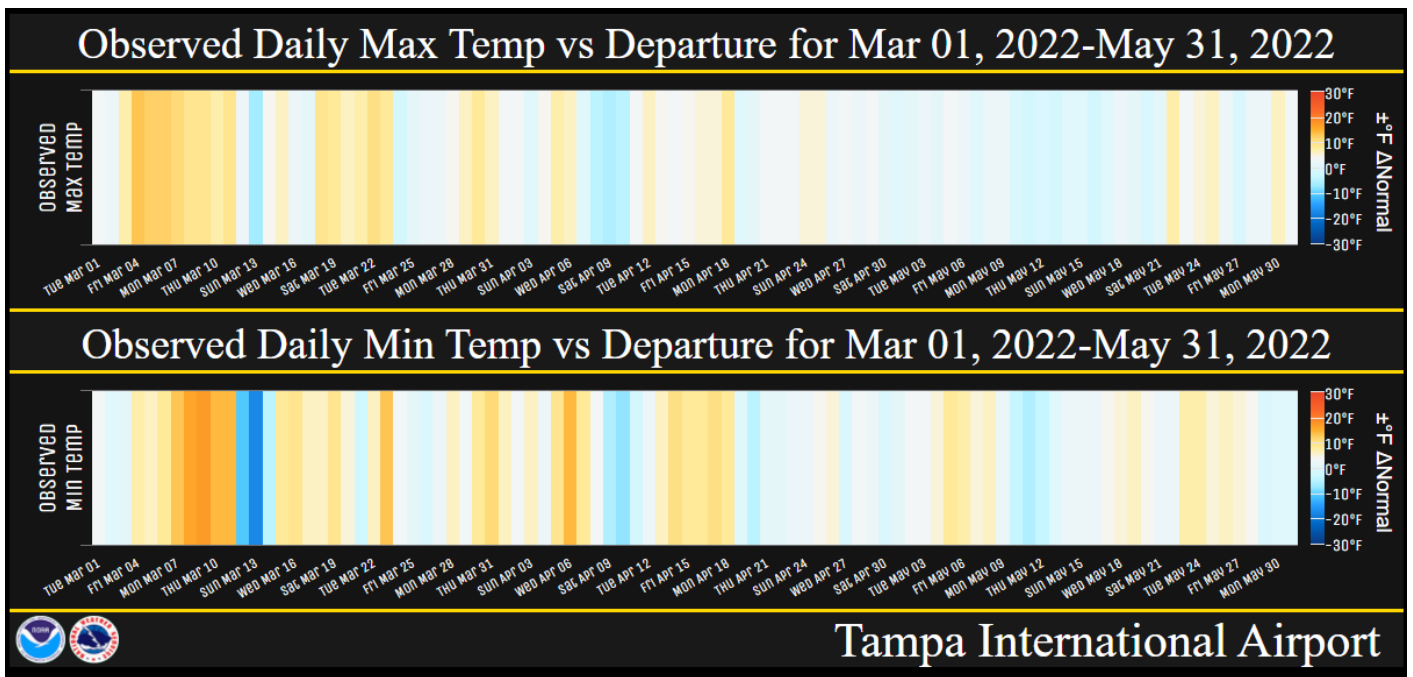
Tampa Bay Area

2525 14th Avenue SE, Ruskin, Florida 33570

813-645-2323 <https://weather.gov/tampabay>

May and Spring 2022 Climate Summary for West Central and Southwest Florida

This spring the La Niña phase of the El Niño Southern Oscillation (ENSO) continued and as expected we had temperatures average about 1 to 3 degrees above normal across most of the region placing a several locations in the Top Ten Warmest.



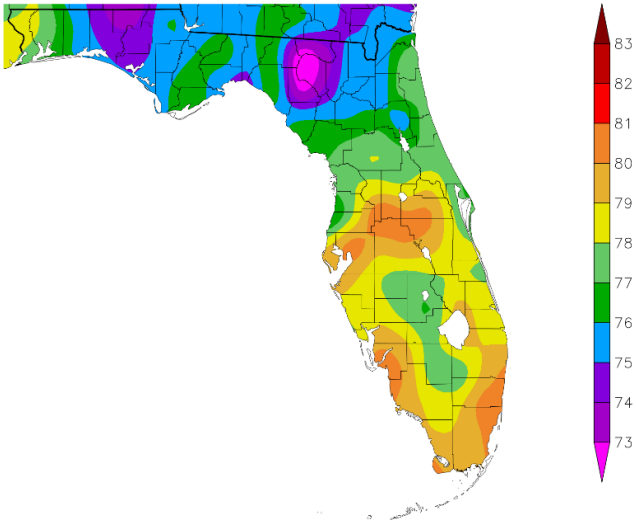
MAY TEMPERATURE RANKINGS (°F) :

Location	Rank	May 2022 Avg Temp	Normal May Temp	Dep fm Normal	Records Began
Tampa Area	2nd Warmest (tie)	81.6°	79.5°	+2.1°	Apr 1890
Plant City	3rd Warmest	80.4°	78.7°	+1.7°	Sep 1892
Winter Haven Area	6th Warmest	80.4°	79.3°	+1.1°	Mar 1941
Fort Myers Area	14th Warmest	80.3°	79.3°	+1.0°	Jan 1902
St Petersburg Area	13th Warmest (tie)	80.1°	79.4°	+0.7°	Aug 1914
Lakeland Area	19th Warmest	79.3°	78.2°	+1.1°	Jan 1915
Punta Gorda Area	14th Warmest (tie)	79.1°	77.9°	+1.2°	May 1914
Sarasota-Bradenton Area	8th Warmest	78.8°	77.8°	+1.0°	Jan 1911
Bartow	25th Warmest (tie)	78.7°	77.6°	+1.1°	Jun 1892
Inverness 3 SE	7th Warmest (tie)	78.1°	74.8°	+3.3°	Jul 1948
Wauchula 2 N	17th Warmest (tie)	78.0°	76.3°	+1.7°	Jan 1933
Venice	15th Warmest (tie)	77.8°	77.5°	+0.3°	May 1955
Brooksville Area	21st Warmest (tie)	77.7°	75.3°	+2.4°	Jan 1892
Archbold Bio Stn	8th Warmest	77.4°	76.3°	+1.1°	Jan 1969
Chiefland 5 ESE	12th Warmest (tie)	76.3°	74.5°	+1.8°	Jul 1956

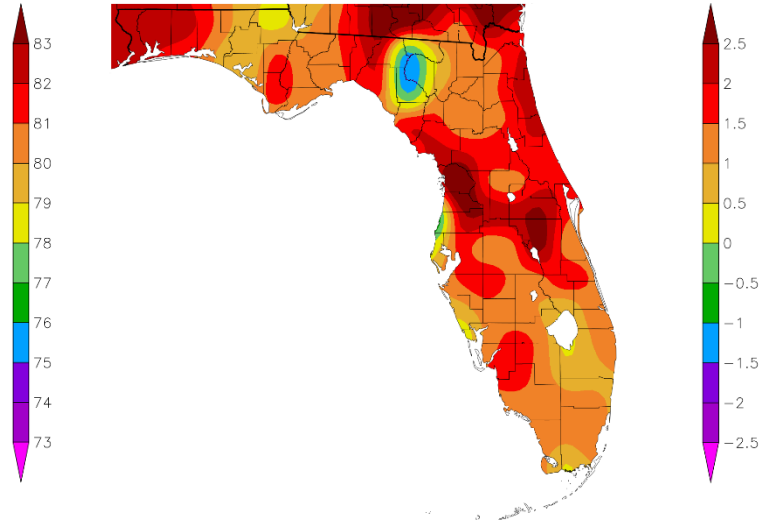
SPRING TEMPERATURE RANKINGS (°F) :

Location	Rank	Spring 2022 Avg Temp	Normal Spr Temp	Dep fm Normal	Records Began
Fort Myers Area	1st Warmest (tie)	77.9°	74.8°	+3.1°	Jan 1902
Tampa Area	1st Warmest (tie)	77.5°	74.0°	+1.5°	Apr 1890
Winter Haven Area	4th Warmest	76.0°	74.1°	+1.9°	Mar 1941
Plant City	3rd Warmest	75.8°	73.6°	+2.2°	Sep 1892
St Petersburg Area	7th Warmest (tie)	75.8°	74.2°	+1.6°	Aug 1914
Lakeland Area	7th Warmest	75.4°	73.3°	+2.1°	Jan 1915
Punta Gorda Area	8th Warmest (tie)	75.1°	73.2°	+1.9°	May 1914
Sarasota-Bradenton Area	4th Warmest	75.0°	72.9°	+2.1°	Jan 1911
Venice	8th Warmest	74.6°	72.6°	+2.0°	May 1955
Bartow	17th Warmest (tie)	74.3°	72.6°	+1.6°	Jun 1892
Archbold Bio Stn	3rd Warmest	73.7°	71.7°	+2.0°	Jan 1969
Wauchula 2 N	15th Warmest (tie)	73.4°	71.2°	+2.2°	Jan 1933
Brooksville Area	22nd Warmest (tie)	72.6°	69.6°	+3.0°	Jan 1892
Inverness 3 SE	7th Warmest (tie)	72.5°	68.8°	+3.7°	Jul 1948
Chiefland 5 ESE	6th Warmest (tie)	70.8°	68.6°	+2.2°	Jul 1956

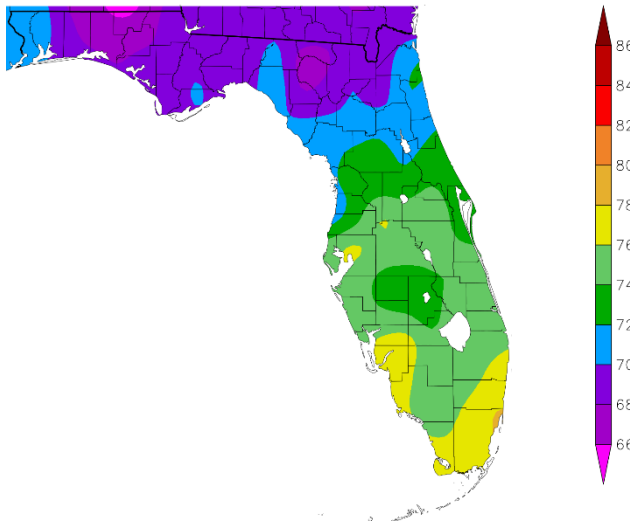
Temperature (F)
5/1/2022 – 5/31/2022



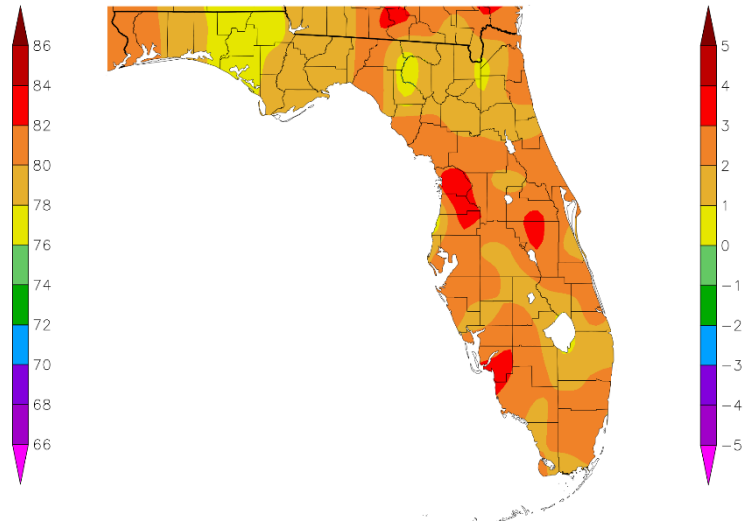
Departure from Normal Temperature (F)
5/1/2022 – 5/31/2022



Temperature (F)
3/1/2022 – 5/31/2022



Departure from Normal Temperature (F)
3/1/2022 – 5/31/2022



Graphics Source: NOAA Regional Climate Centers

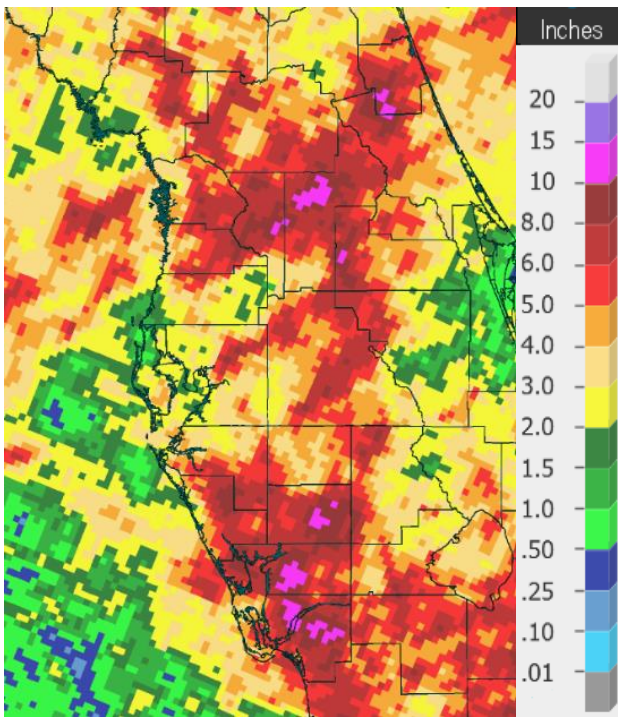
As for rainfall, March was somewhat dry across much of the region with the exception being across the Nature Coast where rainfall was 200 to 300 percent of normal. April and May saw a wide range of amounts, some well above normal while others were below normal. For the Spring most locations north of Interstate 4 were above normal with varying amounts further south.

MAY RAINFALL RANKINGS (°F) :

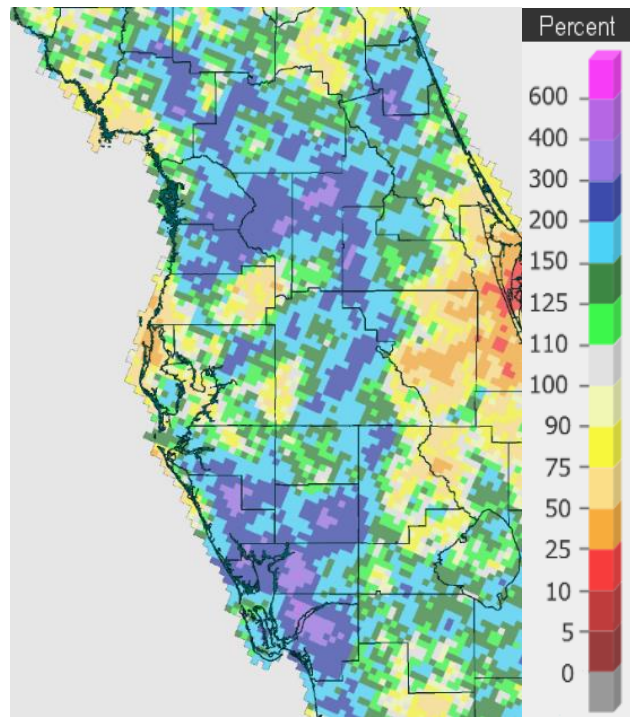
Location	Rank	May 2022 Rain Total	Normal May Rain	Dep fm Normal	Records Began
Fort Myers Area	4th Wettest	8.67	3.46	+5.21	Jan 1902
Plant City	10th Wettest	8.41	4.04	+4.37	Feb 1893
Punta Gorda Area	12th Wettest	6.72	3.26	+3.46	May 1914
Bartow	29th Wettest	6.49	2.95	+3.54	Jun 1892
Inverness 3 SE	13th Wettest	6.30	3.09	+3.21	Jul 1948
Lakeland Area	32nd Wettest	4.95	3.80	+1.15	Jan 1915
Venice	11th Wettest	4.74	3.25	+1.49	May 1955
Sarasota-Bradenton Area	28th Wettest	4.26	2.58	+1.68	Jan 1911
Brooksville Area	55th Wettest	3.79	3.35	+0.44	Jan 1892
Archbold Bio Stn	25th Driest	3.75	4.36	-0.61	Jan 1969
St. Leo	55th Wettest	3.70	2.98	+0.72	Apr 1895
Chiefland 5 ESE	24th Wettest	3.65	2.78	+0.87	Jul 1956
St. Petersburg Area	31st Wettest	3.61	2.26	+1.35	Aug 1914
Tampa Area	56th Wettest	2.71	2.60	+0.11	Apr 1890
Wauchula 2 N	37th Driest	2.69	3.51	-0.82	Jan 1933
Winter Haven Area	33rd Driest	2.33	2.67	-0.34	Mar 1941
Tarpon Springs	16th Driest	0.46	2.35	-1.89	Jan 1892

SPRING RAINFALL RANKINGS (°F) :

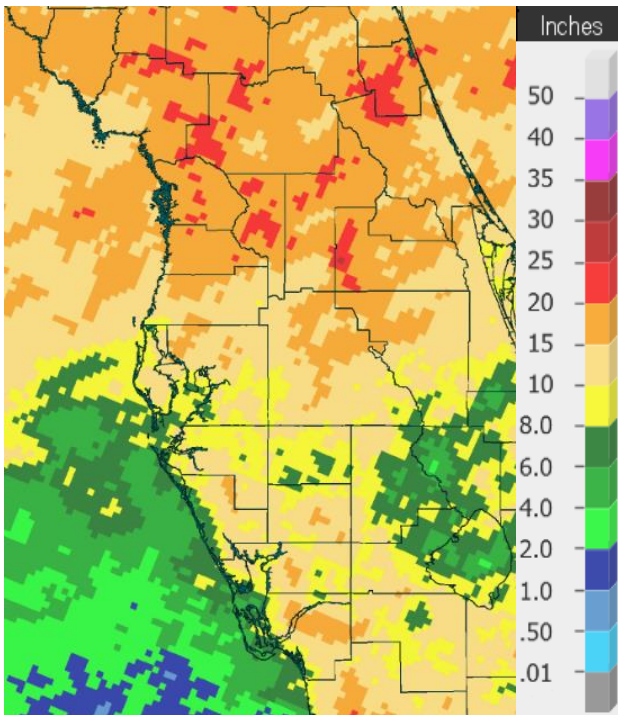
Location	Spring Rank	2022 Rain Total	Normal Spr Rain	Dep fm Normal	Records Began
Inverness 3 SE	4th Wettest	18.07	9.07	+9.00	Jul 1948
Chiefland 5 ESE	12th Wettest	15.50	9.56	+5.94	Jul 1956
Fort Myers Area	8th Wettest	14.93	7.97	+6.96	Jan 1902
Plant City	22nd Wettest	14.59	9.70	+4.89	Feb 1893
Bartow	32nd Wettest	13.00	8.51	+4.49	Jun 1892
Tampa Area	18th Wettest	12.38	7.67	+4.71	Apr 1890
Lakeland Area	33rd Wettest	11.65	9.68	+1.97	Jan 1915
Winter Haven Area	26th Wettest	10.37	8.21	+2.16	Mar 1941
St. Petersburg Area	41st Wettest	9.39	6.77	+2.62	Aug 1914
St. Leo	64th Driest	9.11	9.22	-0.11	Apr 1895
Sarasota-Bradenton Area	41st Wettest	8.74	7.89	+0.85	Jan 1911
Punta Gorda Area	41st Wettest	8.52	7.77	+0.75	May 1914
Venice	39th Driest	8.35	8.69	-0.34	May 1955
Tarpon Springs	66th Driest	7.61	8.12	-0.51	Jan 1892
Wauchula 2 N	26th Driest (tie)	7.36	9.42	-2.06	Jan 1933
Archbold Bio Stn	10th Driest	6.73	9.77	-3.04	Jan 1969



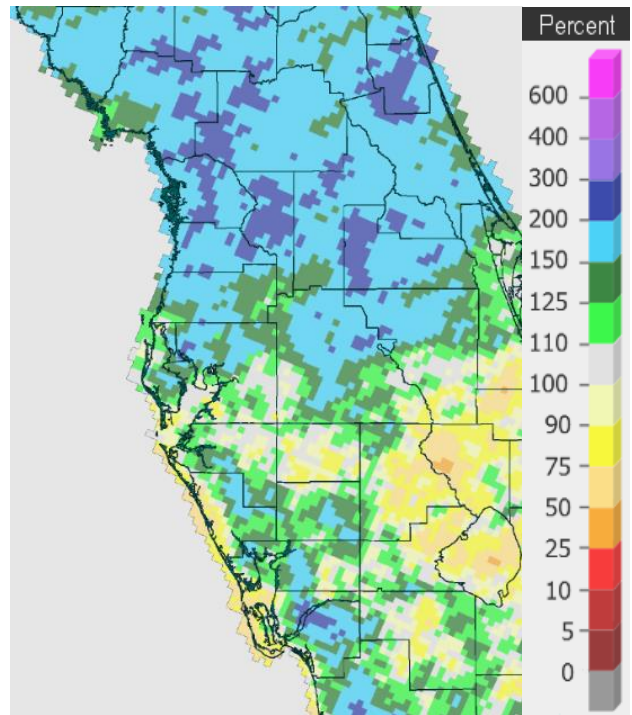
May 2022 Rainfall



Percent of Normal



Spring 2022 Rainfall



Percent of Normal

On the following pages are tables of the Top Ten Warmest, Coolest, Wettest, and Driest Mays and Springs at some official NWS locations, which includes the average/total for this May and Spring 2021 (March/April/May) where available, and the 1991-2020 Normal (average) temperature and rainfall.

Chiefland 5 ESE (Records began July 1956):

Warmest Mays	Coollest Mays	Wettest Mays	Driest Mays
1 78.5 in 1991	1 72.3 in 1992	1 13.14 in 1976	1 0.00 in 2021
2 78.1 in 2019	2 72.5 in 2013	2 7.50 in 2010	0.00 in 2001
3 77.2 in 2017	72.5 in 2005	3 6.99 in 1959	3 0.05 in 2000
77.2 in 1959	72.5 in 1988	4 6.93 in 1966	4 0.23 in 2008
5 77.0 in 1995	5 72.6 in 1967	5 6.87 in 2014	5 0.26 in 1965
6 76.9 in 2015	72.6 in 1960	6 6.82 in 1969	6 0.62 in 1985
76.9 in 1975	7 72.8 in 2007	7 6.72 in 2018	7 0.68 in 1994
8 76.7 in 2012	72.8 in 2006	8 6.65 in 2005	8 0.76 in 2007
9 76.6 in 2018	9 72.9 in 1971	9 5.99 in 1991	9 0.82 in 1998
76.6 in 1990	10 73.0 in 2001	10 5.72 in 1980	0.82 in 1988
11 76.5 in 1962	
12 76.3 in 2022		24 3.65 in 2022	42 3.65 in 2022
76.3 in 1996			

Normal Temperature for May at CHIF1 = 74.5°

Normal Rainfall for May at CHIF1 = 2.78 in.

Warmest Springs	Coollest Springs	Wettest Springs	Driest Springs
1 73.4 in 2015	1 65.8 in 2005	1 24.94 in 1959	1 2.69 in 2007
2 72.1 in 2020	2 66.0 in 1969	2 23.30 in 1982	2 2.92 in 2000
3 72.0 in 1991	3 66.4 in 1960	3 21.65 in 1991	3 3.71 in 2006
4 71.7 in 2012	4 66.5 in 2013	4 19.46 in 2014	4 4.66 in 2002
5 71.3 in 2017	5 66.8 in 1993	5 19.45 in 1957	5 4.71 in 1989
6 70.8 in 2022	66.8 in 1971	6 19.41 in 2005	6 4.77 in 2004
70.8 in 2019	7 66.9 in 1966	7 18.33 in 1996	7 5.29 in 2017
70.8 in 2002	8 67.0 in 1996	8 16.64 in 2018	8 5.46 in 1994
9 70.5 in 2003	9 67.2 in 2001	9 16.28 in 1983	9 5.72 in 2019
10 70.4 in 1995	67.2 in 1962	10 16.23 in 1976	10 5.75 in 1998
		11 15.93 in 1978	5.75 in 1967
		12 15.50 in 2022	

Normal Temperature for Spring at CHIF1 = 68.6°

Normal Rainfall for Spring at CHIF1 = 9.56 in

Inverness 3 SE (Records began July 1948):

Warmest Mays	Coollest Mays	Wettest Mays	Driest Mays
1 80.0 in 1953	1 71.6 in 1992	1 11.97 in 1976	1 0.04 in 2008
2 79.7 in 2010	2 72.3 in 1988	2 11.48 in 2009	2 0.20 in 2000
3 79.1 in 1975	3 72.6 in 1993	3 10.61 in 2018	3 0.29 in 2021
4 78.7 in 1962	4 73.4 in 2005	4 10.59 in 1959	4 0.40 in 1965
5 78.4 in 2019	5 73.6 in 2006	5 8.79 in 1979	5 0.42 in 1994
6 78.2 in 1991	6 73.7 in 1997	6 8.11 in 2012	6 0.49 in 1998
7 78.1 in 2022	7 73.9 in 2001	7 7.71 in 2014	7 0.54 in 2007
78.1 in 2015	8 74.0 in 2007	8 7.33 in 1984	8 0.74 in 1997
78.1 in 1959	74.0 in 1999	9 7.27 in 1952	0.74 in 1977
10 78.0 in 1955	10 74.2 in 1982	10 6.92 in 1982	10 0.78 in 2001
	74.2 in 1976	11 6.66 in 1975	
		12 6.39 in 1957	
		13 6.30 in 2022	

Normal Temperature for May at INVF1 = 74.8°

Normal Rainfall for May at INVF1 = 3.09 in.

Warmest Springs	Coollest Springs	Wettest Springs	Driest Springs
1 74.0 in 2015	1 66.3 in 1993	1 24.95 in 1959	1 1.96 in 1967
2 73.7 in 1953	2 66.9 in 1992	2 21.14 in 1960	2 2.76 in 1977
3 73.5 in 1967	3 67.1 in 1996	3 20.75 in 1982	3 3.22 in 2000
4 73.1 in 1963	4 67.2 in 1988	4 18.07 in 2022	4 3.60 in 1994
5 73.0 in 2020	5 67.8 in 2018	5 17.63 in 2018	5 4.03 in 2013
6 72.9 in 2012	6 68.1 in 2001	6 17.36 in 2014	6 4.05 in 2007
7 72.5 in 2022	7 68.3 in 2007	7 17.22 in 1991	7 4.24 in 2019
72.5 in 1965	8 68.7 in 2004	8 15.78 in 1987	8 4.47 in 2004
9 72.2 in 1974	68.7 in 1999	15.74 in 1976	9 4.63 in 1955
10 72.1 in 2002	10 69.1 in 2006	10 15.34 in 1958	10 4.67 in 1999
72.1 in 1991			
72.1 in 1954			

Normal Temperature for Spring at INVF1 = 68.8°

Normal Rainfall for Spring at INVF1 = 9.07 in.

Brooksville Area (Records began January 1892):

Warmest Mays	Coollest Mays	Wettest Mays	Driest Mays
1 80.7 in 1905	1 72.5 in 2005	1 16.27 in 1976	1 Trace in 1977
2 80.6 in 1927	2 72.8 in 1917	2 15.57 in 2009	2 0.19 in 1926
3 80.3 in 1933	3 73.1 in 2001	3 12.25 in 2018	3 0.23 in 1949
4 79.6 in 1995	4 73.2 in 1924	4 12.20 in 1923	4 0.29 in 2000
5 79.4 in 1899	73.2 in 1920	5 9.54 in 2014	5 0.45 in 1951
6 79.2 in 1929	6 73.4 in 1923	6 9.25 in 1906	6 0.47 in 1948
7 79.1 in 1962	7 73.6 in 1999	7 9.15 in 1912	7 0.56 in 2021
8 79.0 in 1975	8 73.7 in 1925	8 8.71 in 1921	8 0.57 in 1908
79.0 in 1902	9 73.8 in 2006	9 8.18 in 1957	9 0.60 in 1899
10 78.7 in 2019	73.8 in 1954	10 7.92 in 1919	10 0.68 in 1910
78.7 in 1953	
78.7 in 1935		55 3.79 in 2022	75 3.79 in 2022
...			
21 77.7 in 2022			
77.7 in 1938			
77.7 in 1930			
77.7 in 1908			
77.7 in 1898			
77.7 in 1895			

Normal Temperature for May at BKV = 75.3°

Normal Rainfall for May at BKV = 3.35 in.

Warmest Springs	Coollest Springs	Wettest Springs	Driest Springs
1 75.2 in 1929	1 66.1 in 2005	1 22.97 in 1959	1 1.20 in 1898
2 75.0 in 1945	2 67.6 in 2004	2 21.84 in 1960	2 1.57 in 2000
3 74.4 in 1927	67.6 in 1926	3 21.28 in 1991	3 2.20 in 1977
4 74.3 in 2015	67.6 in 1892	4 20.07 in 1928	2.20 in 1945
74.3 in 1935	5 67.8 in 1924	5 19.69 in 1976	5 2.35 in 2006
6 74.2 in 2020	6 68.0 in 2010	6 19.67 in 1900	6 2.58 in 1910
7 74.0 in 1948	7 68.1 in 1998	7 18.83 in 2018	7 3.25 in 1908
8 73.6 in 1938	8 68.2 in 2013	8 18.78 in 1982	8 3.56 in 1967
9 73.3 in 1994	9 68.3 in 2001	9 18.54 in 1987	9 3.65 in 2017
10 73.2 in 1905	68.3 in 1999	10 18.26 in 1957	10 3.67 in 1897
...			
22 72.6 in 2022			
72.6 in 1977			
72.6 in 1933			

Normal Temperature for Spring at BKV = 69.6°

Total Rainfall for Spring 2022 = Not Available, several days missing

Normal Rainfall for Spring at BKV = 8.19 in.

St. Leo (Records began April 1895):

Warmest Mays	Coollest Mays	Wettest Mays	Driest Mays
1 81.3 in 1995	1 71.7 in 1928	1 16.81 in 1979	1 0.03 in 2000
2 80.6 in 1899	2 72.3 in 1921	2 14.37 in 1923	2 0.08 in 2021
3 80.2 in 1953	3 73.0 in 1923	3 11.64 in 2009	3 0.15 in 2008
4 80.1 in 2003	4 73.1 in 1931	4 10.33 in 1976	4 0.17 in 1953
5 79.7 in 2000	5 73.6 in 1917	5 10.06 in 2018	5 0.28 in 1965
6 79.6 in 1896	6 73.7 in 1940	6 9.43 in 1919	6 0.40 in 1985
7 79.4 in 1962	7 73.8 in 1920	7 9.23 in 1963	7 0.51 in 1914
8 79.3 in 1985	8 73.9 in 1992	8 8.64 in 1905	8 0.78 in 2001
79.3 in 1902	9 74.1 in 1918	9 8.63 in 1957	9 0.84 in 1998
10 79.2 in 2019	10 74.2 in 1903	10 8.28 in 1921	10 0.86 in 1927
79.2 in 1975	
...		55 3.70 in 2022	74 3.70 in 2022
26 78.4 in 2022			
78.4 in 1946			
78.4 in 1915			

Normal Temperature for May at STLF1 = 76.7°

Normal Rainfall for May at STLF1 = 2.98 in.

Warmest Springs	Coollest Springs	Wettest Springs	Driest Springs
1 75.2 in 1948	1 65.6 in 1931	1 24.63 in 1987	1 1.12 in 2000
2 74.9 in 2002	2 67.9 in 1915	2 21.67 in 1979	2 1.83 in 1967
3 74.8 in 1945	3 68.0 in 1928	3 21.01 in 1960	3 2.87 in 1898
4 74.7 in 2003	4 68.5 in 1930	4 20.57 in 1900	4 3.20 in 1904
5 74.6 in 2015	5 69.0 in 1940	5 20.48 in 1959	5 3.32 in 1977
6 74.5 in 1908	6 69.2 in 1916	6 20.01 in 1953	6 3.96 in 1999
7 74.4 in 1995	7 69.3 in 2013	7 19.13 in 1991	7 4.03 in 1908
8 74.2 in 2020	69.3 in 1971	8 18.77 in 1928	8 4.10 in 1914
74.2 in 1953	69.3 in 1969	9 18.34 in 1957	9 4.19 in 1910
10 74.1 in 1994	10 69.4 in 1992	10 17.99 in 2018	10 4.46 in 2006
	69.4 in 1926
	69.4 in 1920	64 9.11 in 2022	64 9.11 in 2022

Average Temperature for Spring 2022 = N/A, several days missing in April

Normal Temperature for Spring at STLF1 = 71.5°

Normal Rainfall for Spring at STLF1 = 9.22 in.

Tarpon Springs (Records began January 1892):

Warmest Mays	Coollest Mays	Wettest Mays	Driest Mays
1 82.1 in 1995	1 71.7 in 1939	1 15.17 in 1979	1 0.00 in 2001
2 80.6 in 2019	2 72.6 in 1897	2 10.14 in 1991	0.00 in 2000
80.6 in 1991	3 72.8 in 1917	3 10.13 in 1976	3 Trace in 1927
4 80.3 in 1933	4 73.6 in 1894	4 9.38 in 1946	4 0.01 in 2007
5 80.0 in 1996	5 74.0 in 1928	5 8.18 in 1921	5 0.03 in 1965
6 79.8 in 2010	6 74.1 in 1992	6 7.70 in 1969	6 0.08 in 2021
7 79.6 in 2003	74.1 in 1941	7 7.17 in 1957	7 0.11 in 1949
8 79.3 in 1953	74.1 in 1921	8 6.84 in 1915	8 0.13 in 1899
79.3 in 1943	74.1 in 1903	9 6.79 in 2018	9 0.14 in 1994
10 79.2 in 1994	74.1 in 1892	10 6.53 in 2012	10 0.15 in 1953
79.2 in 1990			11 0.23 in 1951
			12 0.29 in 2008
			0.29 in 1941
			14 0.32 in 1897
			15 0.41 in 1898
			16 0.46 in 2022

Average Temperature for May 2022 = Not Available, several days missing
 Normal Temperature for May at TRPF1 = 77.6°

Normal Rainfall for May at TRPF1 = 2.35 in.

Warmest Springs	Coollest Springs	Wettest Springs	Driest Springs
1 75.5 in 1948	1 66.9 in 1940	1 22.38 in 1959	1 0.97 in 1898
2 75.4 in 2020	2 67.5 in 1915	2 20.20 in 1979	2 1.40 in 2000
75.4 in 2015	3 68.0 in 1960	3 19.83 in 1991	3 1.43 in 2006
4 75.0 in 1995	68.0 in 1931	4 18.91 in 1987	4 1.47 in 1967
75.0 in 1991	5 68.3 in 1971	5 18.30 in 1957	5 1.86 in 1908
6 74.9 in 1929	6 68.7 in 1916	6 18.26 in 1942	6 2.81 in 1990
7 74.8 in 1997	7 68.8 in 1969	7 17.99 in 1960	7 2.82 in 1977
8 74.4 in 1994	68.8 in 1941	8 16.73 in 1900	8 2.83 in 1945
74.4 in 1945	9 68.9 in 1900	9 15.71 in 1983	9 3.21 in 1927
10 74.1 in 2019	10 69.0 in 1906	10 15.58 in 1931	10 3.22 in 2017
	
		65 7.61 in 2022	66 7.61 in 2022

Average Temperature for Spring 2022 = Not Available, several days missing
 Normal Temperature for Spring at TRPF1 = 72.2°

Normal Rainfall for Spring at TRPF1 = 8.12 in.

Tampa Area (Records began April 1890):

Warmest Mays	Coollest Mays	Wettest Mays	Driest Mays
1 81.7 in 1995	1 73.8 in 1891	1 17.64 in 1979	1 Trace in 2001
2 81.6 in 2022	2 74.2 in 1992	2 9.41 in 1921	2 0.02 in 2000
81.6 in 2019	3 74.3 in 1928	3 9.11 in 2009	3 0.07 in 1994
4 81.5 in 1975	4 74.4 in 1982	4 8.54 in 2014	4 0.10 in 1992
5 81.2 in 1991	5 74.5 in 1897	5 8.13 in 1976	5 0.16 in 2021
6 81.1 in 2021	6 74.7 in 1940	6 7.73 in 2018	0.16 in 1941
7 81.0 in 2017	74.7 in 1917	7 7.55 in 1959	7 0.17 in 1973
8 80.9 in 2010	8 74.8 in 1921	8 7.21 in 1957	8 0.22 in 1985
9 80.7 in 2012	74.8 in 1903	9 6.92 in 1894	9 0.24 in 1989
10 80.5 in 2015	10 74.9 in 1923	10 6.88 in 1991	10 0.31 in 1940
80.5 in 1990	
		56 2.71 in 2022	78 2.71 in 2022

Normal Temperature for May at TPA = 79.5°

Normal Rainfall for May at TPA = 2.60 in.

Warmest Springs	Coollest Springs	Wettest Springs	Driest Springs
1 77.5 in 2022	1 68.3 in 1915	1 25.67 in 1959	1 0.61 in 1898
2 77.1 in 2015	2 68.5 in 1931	2 20.78 in 1957	2 0.86 in 2000
3 76.6 in 2012	68.5 in 1901	3 20.62 in 1979	3 1.29 in 1967
4 76.2 in 2020	4 68.8 in 1969	4 19.91 in 1930	4 2.17 in 1945
5 76.0 in 2017	5 69.1 in 1971	5 17.54 in 1931	5 2.32 in 1977
6 75.4 in 1991	6 69.2 in 1993	6 15.26 in 1987	6 2.46 in 2006
75.4 in 1945	7 69.4 in 1992	7 14.45 in 1983	7 2.64 in 1999
8 75.3 in 2021	69.4 in 1926	8 14.38 in 2014	8 2.74 in 1989
75.3 in 2002	9 69.6 in 1983	9 14.31 in 1924	9 2.98 in 1985
10 75.1 in 2019	69.6 in 1940	10 13.73 in 1960	10 3.06 in 2017
	69.6 in 1916	11 13.69 in 1997	
	69.6 in 1891	12 13.43 in 1900	
		13 13.15 in 1991	
		14 13.10 in 2011	
		15 12.92 in 1926	
		16 12.59 in 2015	
		17 12.55 in 1921	
		18 12.38 in 2022	

Normal Temperature for Spring at TPA = 74.0°

Normal Rainfall for Spring at TPA = 7.67 in.

St Petersburg Area (Records began August 1914):

Warmest Mays	Coollest Mays	Wettest Mays	Driest Mays
1 82.0 in 2010	1 75.3 in 1928	1 10.64 in 1959	1 0.00 in 1953
2 81.5 in 2015	75.3 in 1921	2 9.68 in 2018	2 Trace in 2007
3 81.3 in 1995	3 75.4 in 1992	3 9.21 in 1979	3 0.02 in 2000
4 81.2 in 1933	75.4 in 1917	4 8.17 in 1976	4 0.04 in 2001
5 80.9 in 2003	5 75.7 in 1940	5 7.85 in 1925	5 0.05 in 1941
80.9 in 1991	6 75.8 in 1954	6 7.16 in 1991	6 0.12 in 2021
7 80.8 in 1975	7 76.2 in 1920	7 7.11 in 1915	7 0.18 in 1945
80.8 in 1935	8 76.4 in 1993	8 7.05 in 1921	8 0.19 in 1973
9 80.4 in 2012	9 76.5 in 1988	9 6.99 in 2009	9 0.22 in 1992
10 80.3 in 2021	10 76.6 in 1960	10 6.08 in 1957	10 0.24 in 1994
80.3 in 2000	76.6 in 1951
12 80.2 in 2008		31 3.61 in 2022	78 3.61 in 2022
13 80.1 in 2022			
80.1 in 1978			
80.1 in 1953			

Normal Temperature for May at SPG = 79.4°

Normal Rainfall for May at SPG = 2.26 in.

Warmest Springs	Coollest Springs	Wettest Springs	Driest Springs
1 77.7 in 2015	1 69.5 in 1915	1 26.45 in 1959	1 0.88 in 1945
2 76.7 in 2020	2 70.1 in 1931	2 17.88 in 1957	2 1.42 in 2000
76.7 in 2012	3 70.2 in 1993	3 17.20 in 1930	3 1.53 in 2006
4 75.9 in 1948	70.2 in 1983	4 17.18 in 1931	4 1.73 in 1977
75.9 in 1935	5 70.7 in 1996	5 16.31 in 1987	5 2.48 in 1967
75.9 in 1929	70.7 in 1940	6 15.65 in 1982	6 2.73 in 2007
7 75.8 in 2022	70.7 in 1926	7 15.17 in 1960	7 2.84 in 1938
75.8 in 2002	8 70.8 in 1916	8 14.50 in 2003	8 2.85 in 1949
9 75.6 in 2011	9 71.0 in 1992	9 14.03 in 1991	9 2.88 in 1999
10 75.5 in 2003	10 71.1 in 1924	10 13.98 in 1958	10 2.96 in 2002
	
		41 9.39 in 2022	68 9.39 in 2022

Normal Temperature for Spring at SPG = 74.2°

Normal Rainfall for Spring at SPG = 6.77 in.

Plant City (Temperature Records began September 1892/Rainfall Records began February 1893):

Warmest Mays	Coollest Mays	Wettest Mays	Driest Mays
1 82.0 in 2019	1 71.3 in 1928	1 16.44 in 2009	1 0.01 in 2001
2 80.8 in 2017	2 71.9 in 1931	2 14.27 in 2018	2 0.14 in 2000
3 80.4 in 2022	3 72.0 in 1940	3 11.77 in 1991	3 0.29 in 1953
4 80.1 in 1915	4 72.4 in 1941	4 11.68 in 1979	4 0.50 in 1992
5 80.0 in 1995	5 73.0 in 1925	5 10.64 in 1923	5 0.58 in 1981
6 79.9 in 2021	6 73.6 in 1992	6 10.14 in 1957	6 0.62 in 2007
7 79.8 in 1975	7 73.9 in 1932	7 9.10 in 1905	7 0.67 in 1985
8 79.6 in 2010	8 74.0 in 1979	8 9.04 in 1976	0.67 in 1948
9 79.5 in 1991	74.0 in 1960	9 8.72 in 1907	9 0.72 in 1898
79.5 in 1953	10 74.1 in 1901	10 8.41 in 2022	10 0.75 in 1945

Normal Temperature for May at PLCF1 = 78.7°

Normal Rainfall for May at PLCF1 = 4.04 in.

Warmest Springs	Coollest Springs	Wettest Springs	Driest Springs
1 76.7 in 2020	1 64.9 in 1931	1 26.28 in 1959	1 1.56 in 1898
2 76.2 in 2015	2 66.8 in 1901	2 23.68 in 1957	2 1.91 in 1977
3 75.8 in 2022	3 67.0 in 1932	3 20.67 in 1991	3 2.30 in 1981
4 75.6 in 2019	4 67.9 in 1940	4 19.68 in 1960	4 2.40 in 1908
5 75.3 in 2021	5 68.0 in 1941	5 19.42 in 1987	5 2.61 in 1945
6 75.1 in 1912	6 68.1 in 1930	6 19.38 in 1900	6 2.62 in 2017
7 75.0 in 2017	7 68.9 in 1925	7 19.25 in 1933	7 3.13 in 1902
8 74.8 in 2016	8 69.0 in 1942	8 18.59 in 2009	8 3.29 in 1949
9 74.7 in 2012	69.0 in 1928	9 18.56 in 1930	9 3.47 in 1985
10 74.3 in 1991	10 69.1 in 1924	10 18.30 in 1931	10 3.61 in 1967
74.3 in 1948		...	
74.3 in 1945		22 14.59 in 2022	

Normal Temperature for Spring at PLCF1 = 73.6°

Normal Rainfall for Spring at PLCF1 = 9.70 in.

Lakeland (Records began January 1915):

Warmest Mays	Coollest Mays	Wettest Mays	Driest Mays
1 82.9 in 1995	1 73.4 in 1928	1 19.19 in 2018	1 0.13 in 1953
2 81.0 in 1996	2 74.0 in 2007	2 16.03 in 1979	2 0.34 in 2021
3 80.8 in 2019	3 74.4 in 1941	3 14.95 in 2009	3 0.37 in 2008
4 80.7 in 1991	74.4 in 1921	4 10.83 in 1923	4 0.44 in 2001
5 80.6 in 2010	5 74.8 in 1923	5 10.65 in 1991	5 0.50 in 1985
6 80.5 in 1990	6 75.1 in 1982	6 9.68 in 1957	6 0.55 in 2000
7 80.4 in 1994	75.1 in 1970	7 9.10 in 1968	0.55 in 1965
8 80.1 in 1933	8 75.2 in 1940	8 8.45 in 1922	8 0.63 in 1986
9 80.0 in 2017	75.2 in 1917	9 8.21 in 1921	9 0.89 in 1960
10 79.9 in 2015	10 75.4 in 1972	10 8.15 in 1924	10 0.92 in 1945
79.9 in 1935	75.4 in 1960
...	75.4 in 1931	32 4.95 in 2022	77 4.95 in 2022
19 79.3 in 2022	75.4 in 1920		

Normal Temperature for May at LLDF1 = 78.2°

Normal Rainfall for May at LLDF1 = 3.80 in.

Warmest Springs	Coollest Springs	Wettest Springs	Driest Springs
1 76.3 in 2015	1 69.1 in 1941	1 24.87 in 1959	1 2.28 in 1945
2 76.1 in 2020	2 69.3 in 1915	2 23.85 in 2018	2 3.02 in 1981
3 76.0 in 1995	3 69.5 in 1960	3 21.98 in 1981	3 3.16 in 2000
4 75.8 in 1994	4 69.6 in 1969	4 21.14 in 1957	4 3.32 in 1967
5 75.7 in 1991	5 69.8 in 1983	5 21.03 in 1979	5 3.40 in 2017
75.7 in 1935	69.8 in 1925	6 20.64 in 1934	6 3.75 in 1977
7 75.4 in 2022	7 69.9 in 1971	7 18.56 in 1982	7 3.89 in 2006
8 75.0 in 2012	8 70.0 in 2007	8 18.46 in 1987	8 4.03 in 1985
75.0 in 1989	9 70.2 in 1926	9 17.86 in 1931	9 4.45 in 1949
10 74.8 in 2021	70.2 in 1924	17.86 in 1930	10 4.47 in 2021
74.8 in 1945	
74.8 in 1929		33 11.65 in 2022	76 11.65 in 2022

Normal Temperature for Spring at LLDF1 = 73.3°

Normal Rainfall for Spring at LLDF1 = 9.68 in.

Winter Haven Area (Records began March 1941) :

Warmest Mays	Coollest Mays	Wettest Mays	Driest Mays
1 81.8 in 2019	1 74.3 in 1972	1 12.72 in 1957	1 0.03 in 2000
2 81.6 in 1995	2 74.5 in 1960	2 10.36 in 1982	2 0.05 in 2021
3 80.9 in 2015	3 74.6 in 1982	3 8.54 in 1943	3 0.49 in 1945
80.9 in 2010	4 74.9 in 1954	4 8.26 in 2009	4 0.57 in 1941
80.9 in 2003	5 75.1 in 1941	5 8.11 in 1976	5 0.58 in 1965
6 80.4 in 2022	6 75.3 in 1983	6 7.63 in 1946	6 0.71 in 2004
7 80.2 in 1990	7 75.4 in 1971	7 7.58 in 2018	7 0.80 in 1951
80.2 in 1989	8 75.5 in 1988	8 6.81 in 1947	8 0.81 in 1985
80.2 in 1953	75.5 in 1968	9 6.75 in 1975	9 0.84 in 1949
10 80.0 in 2017	10 75.7 in 2007	10 6.54 in 2016	10 0.88 in 1969
80.0 in 2012	75.7 in 1977
	75.7 in 1973	47 2.33 in 2022	33 2.33 in 2022
		2.33 in 1999	2.33 in 1999

Normal Temperature for May at GIF = 79.3°

Normal Rainfall for May at GIF = 2.67 in.

Warmest Springs	Coollest Springs	Wettest Springs	Driest Springs
1 77.7 in 2015	1 69.1 in 1983	1 23.21 in 1957	1 1.61 in 2000
2 76.5 in 2020	2 69.5 in 1960	2 21.81 in 1959	2 2.25 in 1945
3 76.1 in 1948	3 69.8 in 1971	3 20.49 in 1982	3 2.61 in 2017
4 76.0 in 2022	69.8 in 1969	4 20.32 in 1960	4 2.94 in 1981
5 75.9 in 1991	5 70.1 in 1941	5 18.23 in 1947	5 3.77 in 2007
75.9 in 1945	6 70.4 in 1987	6 15.16 in 1991	6 3.78 in 1967
7 75.7 in 1989	70.4 in 1968	7 14.42 in 2010	7 4.01 in 2021
8 75.5 in 2012	8 70.6 in 1993	8 13.59 in 1970	8 4.08 in 2015
9 75.4 in 2019	70.6 in 1981	13.59 in 1973	9 4.17 in 2006
10 75.3 in 2003	10 70.8 in 2013	10 13.44 in 1958	10 4.39 in 1965
	70.8 in 2005
	70.8 in 1988	26 10.37 in 2022	54 10.37 in 2022

Normal Temperature for Spring at GIF = 74.1°

Normal Rainfall for Spring at GIF = 8.21 in.

Bartow (Records began June 1892) :

Warmest Mays	Coollest Mays	Wettest Mays	Driest Mays
1 82.9 in 2015	1 73.3 in 1928	1 17.74 in 1923	1 0.02 in 1965
2 81.4 in 1995	2 73.5 in 1913	2 13.05 in 1979	2 0.25 in 1941
3 81.1 in 2014	3 73.8 in 1941	3 12.96 in 1957	3 0.36 in 1908
81.1 in 2003	4 74.3 in 1894	4 11.42 in 2009	4 0.40 in 1992
5 81.0 in 2012	5 74.5 in 1917	5 11.16 in 1905	5 0.45 in 1951
6 80.5 in 1905	6 74.6 in 1921	6 11.15 in 1930	6 0.52 in 2021
7 80.0 in 1990	7 74.7 in 1940	7 11.04 in 1976	7 0.72 in 1955
80.0 in 1975	74.7 in 1897	8 10.35 in 1921	8 0.75 in 1949
80.0 in 1953	9 74.8 in 1992	9 9.46 in 2018	9 0.87 in 1953
10 79.8 in 1991	10 74.9 in 1982	10 9.42 in 1932	10 0.91 in 2004
79.8 in 1933	
79.8 in 1899		29 6.49 in 2022	103 6.49 in 2022
...			
25 78.7 in 2022			
78.7 in 1989			
78.7 in 1950			
78.7 in 1935			

Normal Temperature for May at BARF1 = 77.6°
 Normal Rainfall for May at BARF1 = 2.95 in.

Warmest Springs	Coollest Springs	Wettest Springs	Driest Springs
1 80.1 in 2015	1 67.8 in 1915	1 25.91 in 1959	1 2.34 in 1908
2 76.0 in 2003	2 68.2 in 1901	2 22.99 in 1930	2 2.48 in 1967
3 75.9 in 2012	3 69.3 in 1914	3 22.88 in 1957	3 2.55 in 2000
4 75.6 in 2014	4 69.6 in 1983	4 19.55 in 1934	4 3.27 in 1977
5 75.4 in 1908	5 70.1 in 1993	5 19.44 in 1923	5 3.53 in 1949
6 75.3 in 1945	6 70.5 in 1894	6 19.34 in 1905	3.53 in 1894
7 75.1 in 1991	70.5 in 1893	7 19.05 in 1947	7 3.55 in 2017
8 74.8 in 1995	8 70.6 in 1971	8 18.67 in 1991	8 3.57 in 1892
74.8 in 1948	70.6 in 1960	9 17.84 in 1979	9 3.70 in 2021
10 74.7 in 2020	70.6 in 1925	10 16.39 in 1937	10 3.77 in 1911
11 74.6 in 1975	70.6 in 1913
12 74.5 in 1989	70.6 in 1896	32 13.00 in 2022	99 13.00 in 2022
74.5 in 1967			
14 74.4 in 2011			
74.4 in 1994			
74.4 in 1953			
17 74.3 in 2022			
74.3 in 1929			

Normal Temperature for Spring at BARF1 = 72.6°
 Normal Rainfall for Spring at BARF1 = 8.51 in.

Sarasota-Bradenton Area (Records began January 1911):

Warmest Mays	Coollest Mays	Wettest Mays	Driest Mays
1 80.7 in 2019	1 71.8 in 1917	1 9.52 in 1996	1 0.00 in 1941
80.7 in 1995	2 72.9 in 1928	2 9.39 in 1991	2 Trace in 2007
3 79.6 in 2010	3 73.1 in 1940	3 9.34 in 1978	3 0.02 in 1953
4 79.5 in 1991	4 73.4 in 1911	4 9.26 in 1957	4 0.10 in 1951
79.5 in 1990	5 73.5 in 1931	5 9.05 in 1921	0.10 in 1945
6 79.4 in 2012	73.5 in 1921	6 8.56 in 1954	6 0.13 in 1973
7 78.9 in 2017	7 73.7 in 1960	7 8.18 in 1959	7 0.15 in 1992
8 78.8 in 2022	8 74.0 in 1924	8 7.52 in 1934	0.15 in 1952
9 78.7 in 2003	9 74.1 in 1926	9 7.05 in 2014	9 0.16 in 1967
10 78.6 in 2021	10 74.2 in 1992	10 6.97 in 2018	10 0.18 in 1994
	74.2 in 1923
		28 4.26 in 2022	85 4.26 in 2022

Normal Temperature for May at SRQ = 77.8°

Normal Rainfall for May at SRQ = 2.58 in.

Warmest Springs	Coollest Springs	Wettest Springs	Driest Springs
1 75.4 in 2020	1 66.8 in 1931	1 25.80 in 1957	1 1.39 in 1967
2 75.2 in 2015	2 67.2 in 1915	2 17.97 in 1959	2 2.01 in 2006
3 75.1 in 2012	3 68.3 in 1916	3 17.92 in 1991	3 2.07 in 1977
4 75.0 in 2022	4 68.5 in 1940	4 16.60 in 1996	4 2.50 in 1945
5 74.5 in 2019	5 68.8 in 1941	5 16.55 in 1997	5 2.61 in 1981
6 74.4 in 2016	68.8 in 1926	6 15.97 in 1958	6 2.83 in 1974
7 74.3 in 1995	68.8 in 1924	7 15.17 in 1930	7 2.97 in 1956
8 74.0 in 1994	8 69.0 in 1983	8 14.97 in 1969	8 3.02 in 2007
9 73.9 in 2003	9 69.1 in 1971	9 14.76 in 2014	3.02 in 1949
73.9 in 2002	10 69.5 in 1914	10 14.20 in 1987	10 3.10 in 2000
	
		41 8.74 in 2022	71 8.74 in 2022

Normal Temperature for Spring at SRQ = 72.9°

Normal Rainfall for Spring at SRQ = 7.89 in.

**Myakka River State Park (Temperature Records began March 1956/
Rainfall Records began September 1943):**

Warmest Mays	Coollest Mays	Wettest Mays	Driest Mays
1 81.3 in 1995	1 73.5 in 1960	1 15.06 in 2018	1 0.02 in 2007
2 80.1 in 2010	2 74.2 in 1992	2 12.81 in 1959	0.02 in 2000
3 79.9 in 2019	3 74.9 in 1988	3 9.17 in 2014	3 0.23 in 1985
4 79.8 in 2003	4 75.0 in 2001	4 8.85 in 1970	4 0.35 in 1953
5 79.4 in 1990	75.0 in 1993	5 7.95 in 1975	5 0.42 in 1945
6 79.3 in 1998	6 75.1 in 2013	6 7.92 in 2009	6 0.50 in 1955
7 79.2 in 1978	75.1 in 1963	7 7.73 in 2016	7 0.55 in 1994
8 79.0 in 1996	8 75.2 in 1972	8 7.55 in 1976	8 0.56 in 1973
9 78.9 in 2012	9 75.4 in 1970	9 6.02 in 1968	9 0.61 in 1951
78.9 in 1975	10 75.6 in 2020	10 5.59 in 1963	10 0.62 in 1949

Average Temperature for May 2022 = Not Available Yet
Normal Temperature for May at MKCF1 = 77.4°

Total Rainfall for May 2022 = Not Available Yet
Normal Rainfall for May at MKCF1 = 3.75 in.

Warmest Springs	Coollest Springs	Wettest Springs	Driest Springs
1 75.5 in 2003	1 69.1 in 1960	1 23.31 in 1959	1 1.43 in 2006
2 75.4 in 1995	2 69.8 in 1971	2 18.47 in 1987	2 1.83 in 1945
3 74.9 in 1997	69.8 in 1962	3 18.06 in 1957	3 3.01 in 1989
4 74.1 in 2012	4 70.0 in 2013	4 18.02 in 2018	4 3.44 in 1981
74.1 in 1982	5 70.4 in 1986	5 17.63 in 1993	5 3.56 in 1955
74.1 in 1975	6 70.5 in 1983	6 16.55 in 1998	6 3.80 in 2004
7 74.0 in 2019	70.5 in 1958	7 16.43 in 2014	7 4.05 in 1978
74.0 in 1990	8 70.7 in 2005	8 15.59 in 1969	8 4.12 in 1950
9 73.8 in 1994	70.7 in 1988	9 15.18 in 1970	9 4.16 in 1971
10 73.6 in 2016	10 70.8 in 1959	10 14.48 in 1982	10 4.37 in 1953

Average Temperature for Spring 2022 = Not Available Yet
Normal Temperature for Spring at MKCF1 = 72.6°

Total Rainfall for Spring 2022 = Not Available Yet
Normal Rainfall for Spring at MKCF1 = 9.73 in.

Venice (Records began May 1955):

Warmest Mays	Coollest Mays	Wettest Mays	Driest Mays
1 82.7 in 2010	1 72.9 in 1988	1 13.39 in 2018	1 0.06 in 1994
2 81.8 in 1995	2 74.3 in 1960	2 8.57 in 1969	0.06 in 1989
3 81.3 in 2003	3 74.5 in 1981	3 7.73 in 2009	3 0.12 in 1995
4 80.8 in 2012	4 74.6 in 1980	4 7.70 in 1959	4 0.40 in 1972
5 80.2 in 2019	5 74.7 in 1977	5 6.41 in 1996	0.40 in 1967
6 79.8 in 2011	6 75.2 in 1973	6 5.86 in 1976	6 0.41 in 2007
7 78.9 in 1996	7 75.3 in 1963	7 5.61 in 1975	0.41 in 2001
8 78.8 in 1998	8 75.4 in 1983	8 5.13 in 1991	8 0.46 in 2008
9 78.7 in 2002	9 75.5 in 1970	9 5.12 in 2003	9 0.54 in 1999
10 78.6 in 2000	10 75.6 in 2005	10 4.98 in 1962	10 0.56 in 1973
11 78.5 in 1994		11 4.74 in 2022	
12 78.3 in 2014			
13 77.9 in 2017			
77.9 in 1957			
15 77.8 in 2022			
77.8 in 1956			

Normal Temperature for May at VNCF1 = 77.5°

Normal Rainfall for May at VNCF1 = 3.25 in.

Warmest Springs	Coollest Springs	Wettest Springs	Driest Springs
1 76.4 in 2012	1 68.8 in 1988	1 21.37 in 1957	1 0.79 in 1967
2 75.9 in 2003	2 69.3 in 1962	2 16.90 in 1959	2 1.87 in 1981
3 75.8 in 2015	3 69.5 in 1993	3 16.33 in 1969	3 1.94 in 1974
4 75.4 in 2011	4 69.7 in 1960	4 16.16 in 2018	4 2.58 in 1963
5 75.1 in 1995	5 69.8 in 1987	5 16.05 in 1984	5 2.83 in 1971
6 74.9 in 1997	69.8 in 1983	6 15.10 in 1983	6 2.92 in 1977
7 74.7 in 2002	7 69.9 in 1986	7 14.79 in 1987	7 3.30 in 2006
8 74.6 in 2022	8 70.0 in 2005	8 13.99 in 1962	3.30 in 1989
9 74.5 in 2020	9 70.1 in 1981	9 13.92 in 1996	9 3.36 in 1979
74.5 in 1994	10 70.4 in 1971	10 13.86 in 1991	10 3.62 in 1999
	70.4 in 1958
		29 8.35 in 2022	39 8.35 in 2022

Normal Temperature for Spring at VNCF1 = 72.6°

Normal Rainfall for Spring at VNCF1 = 8.69 in.

Wauchula 2 N (Records began January 1933):

Warmest Mays	Coollest Mays	Wettest Mays	Driest Mays
1 80.1 in 2009	1 73.0 in 1992	1 13.94 in 2018	1 0.00 in 2000
2 79.8 in 1975	2 73.1 in 2013	2 11.32 in 1954	2 0.01 in 1965
3 79.7 in 1995	3 74.1 in 2001	3 11.31 in 1957	3 0.29 in 1945
4 79.4 in 1990	4 74.3 in 1960	4 10.61 in 1963	4 0.30 in 2015
79.4 in 1933	74.3 in 1940	5 9.37 in 2009	5 0.43 in 1953
6 79.2 in 1935	6 74.4 in 2007	6 8.39 in 1976	6 0.48 in 2008
7 78.9 in 2008	74.4 in 1999	7 7.82 in 1968	7 0.55 in 1941
78.9 in 1991	8 74.5 in 1982	8 7.53 in 1934	8 0.56 in 1949
9 78.5 in 1946	9 74.6 in 1954	9 7.42 in 1972	9 0.65 in 1995
10 78.4 in 2019	10 74.7 in 2011	10 7.17 in 1939	10 0.70 in 2004
78.4 in 1978	74.7 in 1941
78.4 in 1967		54 2.69 in 2022	37 2.69 in 2022
13 78.3 in 1962			
14 78.2 in 2017			
78.2 in 1938			
16 78.1 in 2003			
17 78.0 in 2022			
78.0 in 1943			

Normal Temperature for May at WAUF1 = 76.3°

Normal Rainfall for May at WAUF1 = 3.51 in.

Warmest Springs	Coollest Springs	Wettest Springs	Driest Springs
1 75.0 in 1945	1 67.6 in 2013	1 21.37 in 1947	1 0.69 in 1945
2 74.8 in 1935	2 68.8 in 2005	2 20.73 in 1957	2 0.85 in 1967
3 74.6 in 1975	3 69.0 in 2004	3 18.24 in 1998	3 1.90 in 2006
74.6 in 1948	69.0 in 1993	4 17.01 in 2018	4 2.25 in 2000
5 74.4 in 1991	5 69.1 in 1996	5 16.98 in 1962	5 2.40 in 2004
6 74.1 in 2009	69.1 in 1983	6 16.65 in 1954	6 2.42 in 2015
74.1 in 1938	7 69.4 in 1960	7 15.78 in 1958	7 4.34 in 1981
8 74.0 in 2015	8 69.8 in 2018	8 15.60 in 1934	8 4.60 in 1974
74.0 in 1939	69.8 in 2007	9 15.14 in 1959	9 4.72 in 1949
10 73.8 in 1974	10 69.9 in 2014	10 14.19 in 1982	10 4.82 in 1946
11 73.7 in 1967	69.9 in 1950
12 73.6 in 1990		61 7.36 in 2022	26 7.36 in 2022
73.6 in 1989		7.36 in 2021	7.36 in 2021
14 73.5 in 2005			
15 73.4 in 2022			
73.4 in 2003			

Normal Temperature for Spring at WAUF1 = 71.2°

Normal Rainfall for Spring at WAUF1 = 9.42 in.

Archbold Bio Stn (Records began January 1969):

Warmest Mays	Coollest Mays	Wettest Mays	Driest Mays
1 79.1 in 1991	1 71.2 in 1992	1 14.46 in 2018	1 0.83 in 2021
2 79.0 in 1995	2 73.3 in 2013	2 7.99 in 2020	2 1.01 in 1983
3 78.5 in 2017	3 73.6 in 1988	3 7.61 in 1996	3 1.07 in 2015
4 78.2 in 2010	4 73.7 in 1993	4 7.23 in 2016	4 1.07 in 1993
5 78.1 in 2019	5 73.8 in 1982	5 7.00 in 1978	5 1.09 in 2005
6 78.0 in 1990	6 73.9 in 1983	6 6.97 in 1975	6 1.17 in 2000
78.0 in 1975	7 74.1 in 2005	7 6.96 in 1982	7 1.24 in 2007
8 77.4 in 2022	8 74.2 in 2006	8 6.75 in 2014	8 1.46 in 2006
9 77.3 in 2003	9 74.4 in 1977	9 6.53 in 1977	9 1.56 in 1986
10 77.2 in 2012	10 74.5 in 2007	10 6.52 in 1999	10 1.72 in 1990
77.2 in 2002	74.5 in 2001
	74.5 in 1999	31 3.75 in 2022	25 3.75 in 2022

Normal Temperature for May at ACHF1 = 76.3°

Normal Rainfall for May at ACHF1 = 4.36 in.

Warmest Springs	Coollest Springs	Wettest Springs	Driest Springs
1 75.3 in 2015	1 67.8 in 1983	1 18.74 in 2018	1 2.36 in 2006
2 74.0 in 1991	2 68.2 in 1993	2 17.63 in 1982	2 3.56 in 1971
3 73.7 in 2022	3 68.4 in 2013	3 16.84 in 2010	3 4.08 in 2007
4 73.5 in 2020	4 68.5 in 1987	4 15.34 in 2003	4 4.22 in 1981
73.5 in 2003	5 68.6 in 1992	5 14.26 in 1984	5 4.85 in 1990
73.5 in 1995	6 68.7 in 2005	6 14.01 in 1970	6 4.93 in 2002
7 73.3 in 1975	68.7 in 1986	7 13.53 in 1996	7 4.96 in 2017
8 73.1 in 2017	8 69.1 in 2010	8 13.41 in 1969	8 5.09 in 2000
73.1 in 2002	69.1 in 1988	9 12.51 in 1991	9 6.60 in 2009
10 73.0 in 1997	10 69.3 in 2004	10 12.24 in 1973	10 6.73 in 2022

Normal Temperature for Spring at ACHF1 = 71.7°

Normal Rainfall for Spring at ACHF1 = 9.77 in.

Punta Gorda Area (Records began May 1914) :

Warmest Mays	Coollest Mays	Wettest Mays	Driest Mays
1 80.9 in 1953	1 74.0 in 1917	1 15.98 in 2018	1 0.01 in 1927
2 80.7 in 1946	2 74.1 in 1928	2 10.13 in 1946	2 0.07 in 1992
3 80.5 in 1995	3 74.9 in 1992	3 9.45 in 1991	3 0.40 in 1965
4 80.2 in 1991	4 75.0 in 1916	4 9.27 in 1959	4 0.41 in 2000
5 79.9 in 2012	5 75.1 in 1920	5 8.24 in 1968	5 0.42 in 2004
79.9 in 1933	6 75.2 in 2001	6 8.20 in 1963	6 0.45 in 1953
7 79.7 in 2010	75.2 in 1970	7 7.77 in 1972	7 0.54 in 2001
79.7 in 1962	75.2 in 1925	8 7.34 in 1979	0.54 in 1967
9 79.6 in 1956	9 75.6 in 1977	9 7.29 in 1923	9 0.66 in 1998
10 79.5 in 1935	75.6 in 1941	10 7.18 in 1932	0.66 in 1941
11 79.4 in 1990		11 6.92 in 1934	
79.4 in 1950		12 6.72 in 2022	
13 79.3 in 2019			
14 79.1 in 2022			
79.1 in 1975			
79.1 in 1945			
79.1 in 1943			

Normal Temperature for May at PGD = 77.9°

Normal Rainfall for May at PGD = 3.26 in.

Warmest Springs	Coollest Springs	Wettest Springs	Driest Springs
1 77.5 in 1945	1 68.3 in 1915	1 19.21 in 1957	1 0.69 in 1967
2 76.5 in 1948	2 68.8 in 1916	2 18.61 in 1947	2 1.20 in 2006
3 76.1 in 1953	3 69.4 in 1931	3 17.66 in 2018	3 1.82 in 2000
4 76.0 in 1946	4 70.2 in 1971	4 17.41 in 1930	4 2.10 in 1971
5 75.7 in 1944	5 70.5 in 1941	5 15.87 in 1970	5 2.14 in 1981
6 75.6 in 2015	6 70.8 in 2005	6 15.85 in 2010	6 2.24 in 2007
75.6 in 1991	7 70.9 in 1993	7 15.70 in 1959	7 2.27 in 1945
8 75.1 in 2022	70.9 in 1969	8 14.94 in 2003	8 3.31 in 1935
75.1 in 1994	9 71.1 in 2010	9 14.42 in 1931	9 3.45 in 1975
10 75.0 in 2012	71.1 in 2004	10 14.14 in 1991	10 3.55 in 1974
75.0 in 1929	71.1 in 1983
		41 8.52 in 2022	66 8.52 in 2022
		8.52 in 1978	8.52 in 1978

Normal Temperature for Spring at PGD = 73.2°

Normal Rainfall for Spring at PGD = 7.77 in.

Fort Myers Area (Records began January 1902) :

Warmest Mays	Coollest Mays	Wettest Mays	Driest Mays
1 82.0 in 1995	1 74.3 in 1917	1 12.77 in 2018	1 0.04 in 2021
2 81.2 in 2010	2 74.5 in 1941	2 10.32 in 1968	2 0.20 in 2001
3 81.1 in 2012	3 74.8 in 1921	3 8.73 in 1980	3 0.34 in 1994
4 80.8 in 1991	4 74.9 in 1928	4 8.67 in 2022	0.34 in 1962
5 80.7 in 2021	5 75.0 in 1970	5 8.49 in 1925	5 0.41 in 1953
80.7 in 1975	6 75.1 in 1903	8.49 in 1911	6 0.47 in 2004
7 80.6 in 2017	7 75.3 in 1940	7 8.48 in 1991	7 0.50 in 1964
8 80.5 in 2019	75.3 in 1931	8 8.42 in 1922	8 0.54 in 2010
80.5 in 2008	75.3 in 1918	9 8.05 in 1989	9 0.62 in 1988
80.5 in 2003	10 75.5 in 1925	10 7.97 in 1957	0.62 in 1983
11 80.4 in 1994			
80.4 in 1990			
80.4 in 1989			
14 80.3 in 2022			

Normal Temperature for May at FMY = 79.3°

Normal Rainfall for May at FMY = 3.46 in.

Warmest Springs	Coollest Springs	Wettest Springs	Driest Springs
1 77.9 in 2022	1 69.4 in 1931	1 24.94 in 1970	1 1.89 in 1945
77.9 in 2015	2 70.0 in 1915	2 18.71 in 1958	2 2.18 in 1967
3 77.8 in 2020	3 70.2 in 1941	3 18.23 in 1947	3 2.36 in 2006
4 77.0 in 2012	4 70.5 in 1983	4 17.77 in 1930	4 2.44 in 1902
5 76.9 in 1997	5 70.8 in 1960	5 16.85 in 1933	5 2.54 in 1974
6 76.6 in 1991	6 71.1 in 1971	6 15.70 in 1941	6 2.69 in 2001
7 76.4 in 2002	71.1 in 1916	7 15.39 in 1957	7 3.37 in 1953
8 76.3 in 2003	71.1 in 1910	8 14.93 in 2022	8 3.42 in 1964
9 76.2 in 2011	9 71.2 in 1940	9 14.62 in 1991	9 3.45 in 1927
76.2 in 1995	71.2 in 1926	10 14.26 in 2018	10 3.93 in 2017
76.2 in 1994			

Normal Temperature for Spring at FMY = 74.8°

Normal Rainfall for Spring at FMY = 7.97 in.

For more Climate information visit our web site at the following link:
<http://www.weather.gov/tampabay> and then go to the Climate and Past Weather
drop down menu above the graphical forecast images.