



NOAA - National Weather Service

Tampa Bay Area

2525 14th Avenue SE, Ruskin, Florida 33570

813-645-2323 <https://weather.gov/tampabay>

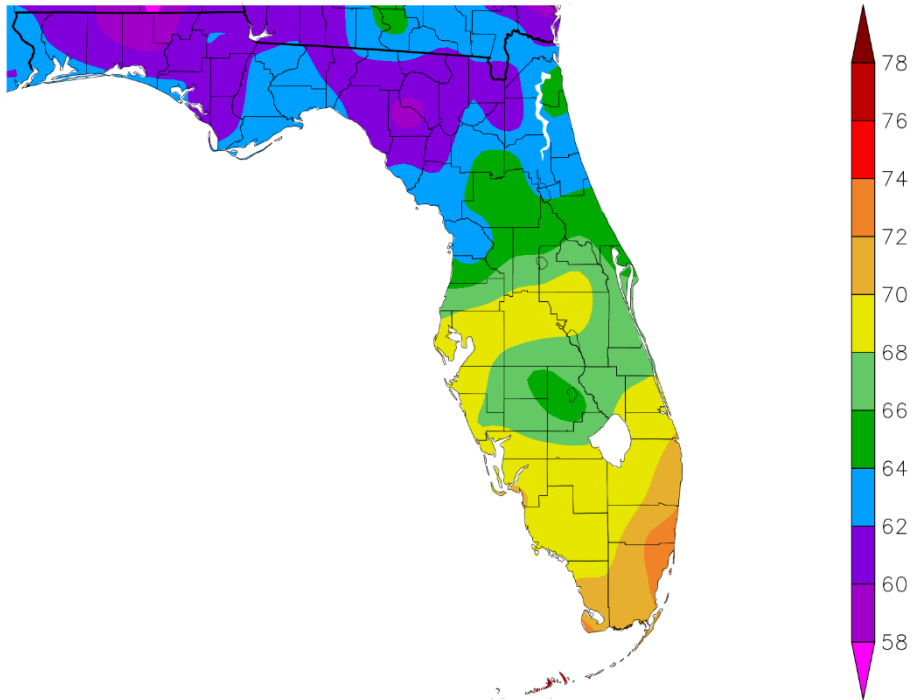
March 2025 Weather Summary for West Central and Southwest Florida

In March 2025 we saw a wide range of temperatures, with a few days where temperatures averaged about 10° above normal, while there were a few other days that were about 10° below normal. For the month, temperatures averaged from about 2°F below normal to 1°F above normal across the area with none of the official locations ending up in the Top Ten Warmest or Coolest for March.

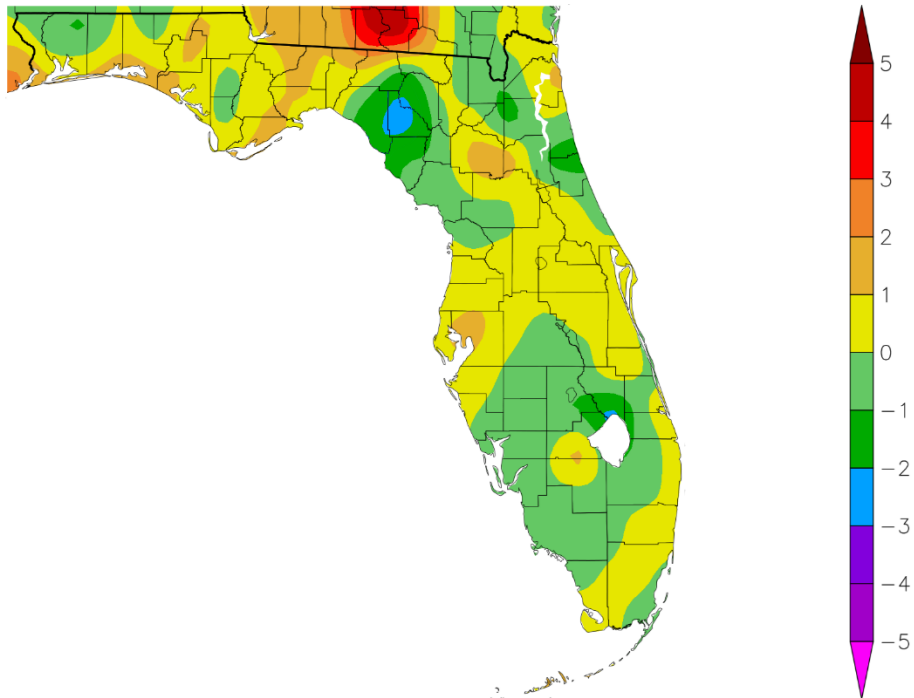
MARCH TEMPERATURE RANKINGS (°F):

Location	Rank	March 2025 Avg Temp	Normal Mar Temp	Dep fm Normal	Records Began
Fort Myers Area	53rd Warmest (tie)	70.7°	70.3°	+0.4°	Jan 1902
Plant City	28th Warmest	69.9°	68.7°	+1.2°	Jan 1893
Tampa Area	33rd Warmest	69.7°	68.6°	+1.1°	Apr 1890
St Petersburg Area	44th Warmest	69.5°	69.0°	+0.5°	Aug 1914
Lakeland Area	41st Warmest	69.2°	68.3°	+0.9°	Jan 1915
Winter Haven Area	35th Coolest (tie)	68.9°	69.1°	-0.2°	Mar 1941
Sarasota-Bradenton Area	37th Warmest (tie)	68.7°	68.1°	+0.6°	Jan 1911
Punta Gorda Area	41st Coolest (tie)	68.0°	68.5°	-0.5°	May 1914
Venice	35th Warmest	67.8°	67.7°	+0.1°	May 1955
Tarpon Springs	58th Warmest (tie)	67.3°	66.8°	+0.5°	Jan 1892
St. Leo	64th Warmest (tie)	67.2°	66.4°	+0.8°	Apr 1895
Bartow	33rd Coolest	67.1°	67.7°	-0.6°	Jun 1892
Wauchula	25th Coolest	65.8°	66.2°	-0.4°	Jan 1933
Archbold Bio Stn	18th Coolest	64.9°	67.1°	-2.2°	Jan 1969
Brooksville Area	81st Warmest (tie)	64.6°	64.2°	+0.4°	Jan 1892
Inverness 3 SE	17th Coolest	63.0°	63.1°	-0.1°	Jul 1948
Chiefland 5 ESE	23rd Coolest	62.0°	63.0°	-1.0°	Jul 1956

Temperature (F)
3/1/2025 – 3/31/2025



Departure from Normal Temperature (F)
3/1/2025 – 3/31/2025

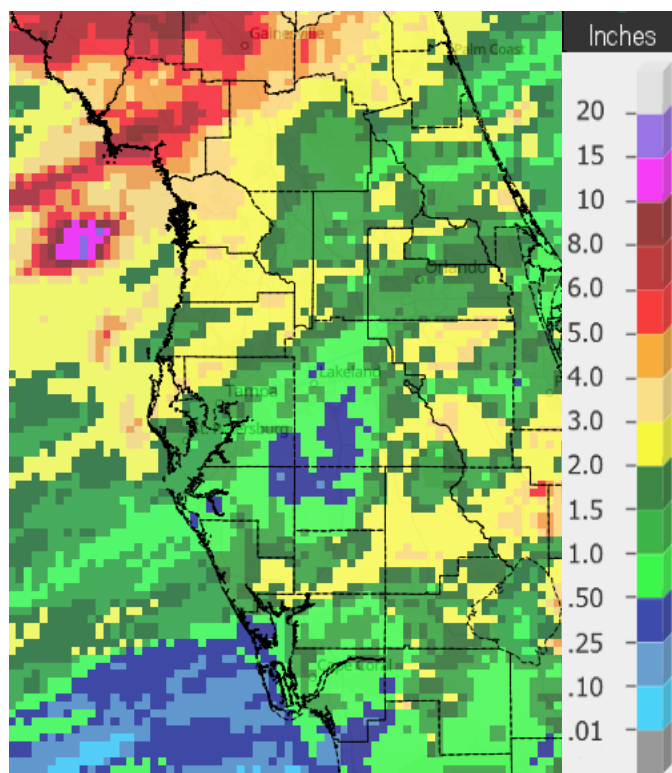


Graphics Source: High Plains Regional Climate Center (HPRCC)

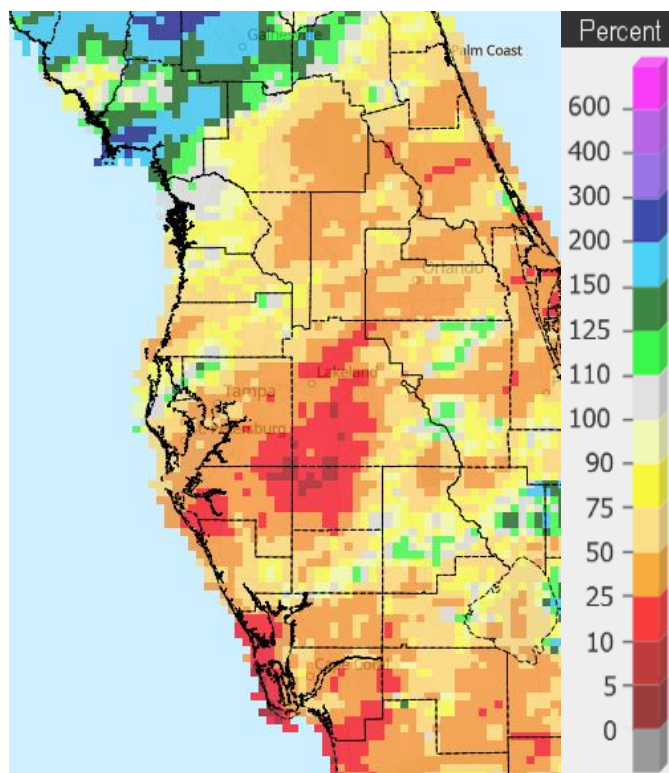
As for rainfall we saw a few cold fronts move across the region, and they did bring rain to some locations, but most areas, except Levy County, ended up below normal for the month as can be seen by all the orange and red areas on the "Percent of Normal" image below right.

MARCH RAINFALL (inches):

Location	Rank	March 2025 Rain Total	Normal Apr Rain	Dep fm Normal	Records Began
Chiefland 5 ESE	13th Wettest	7.21	3.81	+3.40	Jul 1956
Inverness 3SE	40th Driest	3.05	3.29	-0.24	Jul 1948
Brooksville Area	55th Driest	2.11	2.66	-0.55	Jun 1892
St. Leo	45th Driest	1.90	3.18	-1.28	Apr 1895
Archbold Bio Stn	26th Driest	1.88	2.87	-0.99	Jan 1969
Tarpon Springs	52nd Driest	1.79	3.08	-1.29	Jan 1892
Tampa Area	29th Driest (tie)	0.98	2.52	-1.54	Apr 1890
Punta Gorda Area	30th Driest	0.86	2.28	-1.42	May 1914
Plant City	22nd Driest	0.84	2.78	-1.94	Jan 1893
Venice	18th Driest	0.83	2.97	-2.14	Apr 1955
St. Petersburg Area	23rd Driest (tie)	0.78	2.58	-1.80	Aug 1914
Lakeland Area	7th Driest (tie)	0.63	3.06	-2.43	Jan 1915
Fort Myers Area	34th Driest	0.61	2.07	-1.46	Jan 1902
Sarasota-Bradenton Area	16th Driest	0.58	2.85	-2.27	Jan 1911
Wauchula	15th Driest	0.60	2.99	-2.39	Jan 1933
Winter Haven Area	4th Driest	0.34	3.04	-2.70	Mar 1941
Bartow	6th Driest	0.12	2.84	-2.72	Jun 1892



Rainfall March 2025



Percent of Normal

CHIEFLAND 5 SE (Records began in July 1956):

Warmest Marches		Coolest Marches		Wettest Marches		Driest Marches	
1	69.6 in 1997	1	55.5 in 1969	1	14.88 in 1959	1	0.06 in 2006
2	69.5 in 2020	2	56.1 in 2010	2	12.96 in 1996	2	0.15 in 2020
3	69.2 in 2015	3	57.3 in 2013	3	9.20 in 2022	3	0.63 in 2017
4	68.7 in 2012	4	57.8 in 1996	4	9.06 in 2014	4	0.69 in 2013
5	67.6 in 1973	5	59.7 in 1971	5	8.90 in 1960	5	0.71 in 1976
6	67.5 in 2003	6	59.8 in 2005	6	8.86 in 1978	6	0.74 in 2019
7	67.2 in 1977	7	60.0 in 1962	7	8.80 in 1973	7	0.95 in 2007
8	66.3 in 1976	8	60.7 in 1981	8	8.53 in 1991	8	0.99 in 1967
9	66.0 in 1982	9	60.8 in 1966	9	8.33 in 1983	9	1.26 in 2004
	66.0 in 1974	10	60.9 in 2014	10	8.07 in 1992	10	1.27 in 1979
...		...		11	7.90 in 1957		
39	62.0 in 2025	23	62.0 in 2025	12	7.84 in 2008		
				13	7.21 in 2025		

Normal Temperature for March at CHIF1 = 63.0°

Normal Rainfall for March at CHIF1 = 3.81 inches

INVERNESS 3 SE (Records began in July 1948):

Warmest Marches		Coolest Marches		Wettest Marches		Driest Marches	
1	70.9 in 1997	1	57.9 in 1996	1	16.00 in 1960	1	0.00 in 1956
2	70.7 in 2020	2	58.8 in 1969	2	11.13 in 1987	2	Trace in 2020
3	70.0 in 1953	3	59.5 in 2005	3	9.21 in 1959	3	0.01 in 2006
4	69.7 in 2012	4	60.1 in 1999	4	9.00 in 2010	4	0.17 in 2019
	69.7 in 1976	5	60.4 in 1960	5	8.83 in 1982	5	0.56 in 2012
6	69.2 in 1974	6	60.6 in 2018	6	8.63 in 2001	6	0.57 in 2023
	69.2 in 1961	7	61.2 in 1993	7	8.18 in 1964	7	0.65 in 2013
8	69.0 in 2015	8	61.8 in 1981	8	8.05 in 1958	8	0.66 in 1967
9	68.8 in 2023	9	61.9 in 1988	9	8.00 in 1996	9	0.77 in 1964
	68.8 in 1963		61.9 in 1978	10	7.96 in 1983	10	0.80 in 1949
		
		17	63.0 in 2025	37	3.05 in 2025	40	3.05 in 2025

Normal Temperature for March at INV1 = 63.1

Normal Rainfall for March at INV1 = 3.29 inches

BROOKSVILLE AREA (Records began in January 1892):

Warmest Marches		Coolest Marches		Wettest Marches		Driest Marches	
1	73.0 in 1945	1	56.9 in 2010	1	17.70 in 1960	1	Trace in 1956
2	71.7 in 1935	2	57.4 in 1915	2	13.40 in 1987	2	0.02 in 2020
3	71.6 in 1938	3	57.7 in 2013	3	10.69 in 1959	3	0.04 in 2006
4	71.5 in 2020	4	59.3 in 1969	4	10.58 in 1924	4	0.07 in 2017
5	71.3 in 1974	5	59.6 in 1931	5	9.10 in 1930	5	0.10 in 1908
6	71.0 in 1929	6	60.1 in 1901	6	9.00 in 1983	6	0.12 in 2023
7	70.9 in 1948	7	60.2 in 1999	7	8.29 in 2011	7	0.15 in 1898
	70.9 in 1908	8	60.3 in 1924	8	8.00 in 1991	8	0.16 in 1916
	70.9 in 1897	9	60.7 in 2018	9	7.97 in 1958	9	0.17 in 2019
10	70.6 in 1939		60.7 in 1926	10	7.77 in 1982		0.17 in 1945
...		
81	64.6 in 2025	39	64.6 in 2025	76	2.11 in 2025	55	2.11 in 2025
	64.6 in 2009		64.6 in 2009				

Normal Temperature for March at BKV = 64.2°

Normal Rainfall for March at BKV = 2.66 inches

ST LEO (Records began in April 1895):

Warmest Marches		Coolest Marches		Wettest Marches		Driest Marches	
1	72.9 in 1907	1	57.5 in 1931	1	17.91 in 1960	1	0.00 in 2020
2	72.8 in 1945		57.5 in 1915	2	16.50 in 1987	2	Trace in 1907
	72.8 in 1897	3	59.2 in 1969	3	12.47 in 2011	3	0.01 in 1895
4	72.7 in 1997	4	60.0 in 2013	4	12.05 in 1959	4	0.02 in 2006
5	72.4 in 1948	5	60.2 in 2010	5	10.91 in 1924	5	0.09 in 2023
6	72.3 in 2020	6	60.6 in 1930	6	10.05 in 1900	6	0.10 in 1908
7	71.8 in 2003	7	61.1 in 1960	7	9.53 in 1930	7	0.19 in 1904
8	71.6 in 1938	8	61.5 in 1914	8	9.31 in 1958	8	0.30 in 1949
9	71.0 in 1974	9	61.6 in 1924	9	8.74 in 1983	9	0.33 in 1956
10	70.9 in 2012	10	61.9 in 1941	10	8.70 in 1988	10	0.38 in 1917
...		
64	67.2 in 2025	64	67.2 in 2025	87	1.90 in 2025	45	1.90 in 2025
	67.2 in 1951		67.2 in 1951				
	67.2 in 1902		67.2 in 1902				

Normal Temperature for March at STLF1 = 66.4°

Normal Rainfall for March at STLF1 = 3.18 inches

TARPON SPRINGS (Records began in January 1892):

Warmest Marches		Coolest Marches		Wettest Marches		Driest Marches	
1	74.6 in 1997	1	57.5 in 1915	1	14.21 in 1987	1	0.00 in 2020
2	73.2 in 1948	2	58.3 in 1969	2	13.72 in 1960		0.00 in 1907
3	73.0 in 2020	3	59.1 in 1960	3	12.56 in 1959	3	0.02 in 2006
	73.0 in 1945	4	59.4 in 2013	4	11.29 in 2011	4	0.04 in 1908
5	71.8 in 2012	5	59.7 in 1931	5	9.68 in 1983	5	0.11 in 1949
	71.8 in 1903	6	60.0 in 2010	6	8.41 in 1930	6	0.12 in 2023
	71.8 in 1897	7	61.3 in 1941	7	8.18 in 1900	7	0.26 in 1898
8	71.6 in 1921	8	61.5 in 1968	8	8.12 in 1996	8	0.34 in 1956
9	71.3 in 1938	9	61.6 in 1914	9	7.31 in 1947	9	0.47 in 1945
	71.3 in 1929	10	61.7 in 1892	10	7.22 in 2014	10	0.53 in 1935
...		
58	67.3 in 2025	71	67.3 in 2025	82	1.79 in 2025	52	1.79 in 2025
	67.3 in 1951		67.3 in 1951				

Normal Temperature for March at TRPF1 = 66.8°

Normal Rainfall for March at TRPF1 = 3.08 inches

TAMPA AREA (Records began in April 1890):

Warmest Marches		Coolest Marches		Wettest Marches		Driest Marches	
1	74.4 in 2012	1	57.7 in 1915	1	12.64 in 1959	1	Trace in 2020
2	74.3 in 2020	2	58.1 in 1969	2	12.01 in 1987		Trace in 2006
3	73.9 in 2022	3	60.7 in 1931	3	11.00 in 1960		Trace in 1907
	73.9 in 1997	4	60.9 in 1968	4	9.87 in 1930	4	0.06 in 1956
5	73.2 in 1945	5	61.6 in 2013	5	9.79 in 2011	5	0.08 in 1908
6	73.0 in 2015		61.6 in 2010	6	7.59 in 1983		0.08 in 1898
7	72.6 in 1921	7	61.7 in 1941	7	7.36 in 1900	7	0.20 in 1945
8	72.3 in 2023	8	61.9 in 1947	8	7.24 in 1924	8	0.22 in 1949
9	72.2 in 1907	9	62.0 in 1960	9	7.07 in 1931	9	0.35 in 2023
10	71.9 in 1897		62.0 in 1924	10	6.98 in 1957		0.35 in 2018
			62.0 in 1892		6.98 in 1947		
...		
33	69.7 in 2025	103	69.7 in 2025	106	0.98 in 2025	29	0.98 in 2025
					0.98 in 2009		0.98 in 2009

Normal Temperature for March at TPA = 68.6°

Normal Rainfall for March at TPA = 2.52 inches

ST PETERSBURG AREA (Records began in August 1914):

Warmest Marches			Coolest Marches			Wettest Marches			Driest Marches		
1	74.6	in 2012	1	59.0	in 1915	1	11.79	in 1987	1	0.00	in 2020
2	74.5	in 2020	2	61.7	in 2010	2	11.33	in 1959	2	0.03	in 1956
	74.5	in 1945	3	61.9	in 1969	3	8.38	in 1931	3	0.09	in 2006
4	73.9	in 1948	4	62.4	in 1996	4	8.20	in 1983		0.09	in 1939
5	73.3	in 1997	5	62.5	in 1931	5	8.14	in 2010	5	0.11	in 2023
6	73.2	in 1921	6	63.1	in 1960	6	7.86	in 1970	6	0.19	in 1917
7	73.0	in 2015	7	63.3	in 2013	7	7.75	in 1960	7	0.24	in 1916
8	72.8	in 1976	8	63.4	in 1947	8	7.65	in 1952	8	0.31	in 2002
9	72.7	in 1918		63.4	in 1924	9	7.30	in 2011		0.31	in 1949
10	72.6	in 2003	10	63.5	in 1941	10	7.21	in 2001	10	0.37	in 1945
...				
44	69.5	in 2025	65	69.5	in 2025				23	0.78	in 2025
										0.78	in 2019

Normal Temperature for March at SPG = 69.0°

Normal Rainfall for March at SPG = 2.58 inches

PLANT CITY (Records began in September 1892):

Warmest Marches		Coolest Marches		Wettest Marches		Driest Marches	
1	74.3 in 2020	1	56.9 in 1931	1	15.68 in 1960	1	0.00 in 1908
2	73.2 in 1907	2	59.1 in 1915	2	13.70 in 1959		0.00 in 1907
3	73.1 in 2023	3	60.3 in 1932	3	12.78 in 1987	3	0.01 in 2006
	73.1 in 1997	4	60.5 in 1969	4	10.59 in 1983	4	0.02 in 2020
5	72.6 in 2015	5	60.6 in 2010	5	8.81 in 1930	5	0.08 in 1999
6	72.4 in 2022	6	61.0 in 1930	6	7.93 in 2010	6	0.19 in 2023
	72.4 in 2016		61.0 in 1901	7	7.81 in 1924	7	0.21 in 1945
8	72.2 in 2024	8	61.3 in 2013	8	7.51 in 1998	8	0.32 in 1916
	72.2 in 1948	9	61.4 in 1924	9	7.49 in 2011	9	0.39 in 1975
	72.2 in 1945	10	61.5 in 1941		7.49 in 2001	10	0.40 in 2017
...						...	
28	69.9 in 2025					22	0.84 in 2025

Normal Temperature for March at PLCF1 = 68.7°

Normal Rainfall for March at PLCF1 = 2.78 inches

LAKELAND AREA (Records began in January 1915):

Warmest Marches			Coolest Marches			Wettest Marches			Driest Marches		
1	73.5	in 2020	1	60.0	in 1969	1	12.94	in 1960	1	0.00	in 2020
	73.5	in 1921	2	60.1	in 1915	2	12.16	in 1959	2	0.22	in 2006
3	73.4	in 1918	3	61.5	in 2010	3	10.75	in 1987		0.22	in 1916
4	72.8	in 1997		61.5	in 1960	4	9.22	in 1983	4	0.26	in 2021
	72.8	in 1945		61.5	in 1931	5	8.57	in 1930	5	0.53	in 1925
6	72.7	in 2023	6	61.6	in 2013	6	8.53	in 2010	6	0.57	in 2009
	72.7	in 1935		61.6	in 1941	7	8.15	in 1942	7	0.63	in 2025
8	72.6	in 1938	8	61.9	in 1924	8	7.44	in 2001		0.63	in 2000
9	72.2	in 2024	9	62.2	in 1947	9	7.20	in 1998	9	0.67	in 2007
10	72.1	in 2012	10	62.5	in 1968	10	6.90	in 1982	10	0.68	in 2002
	72.1	in 2003									
...			...								
41	69.2	in 2025	70	69.2	in 2025						

Normal Temperature for March at LLDF1 = 68.3°

Normal Rainfall for March at LLDF1 = 3.06 inches

WINTER HAVEN AREA (Records began in January 1941):

Warmest Marches			Coolest Marches			Wettest Marches			Driest Marches		
1	74.6	in 2020	1	58.4	in 1969	1	12.18	in 1960	1	0.14	in 2020
2	73.5	in 2015	2	61.5	in 2013	2	10.97	in 1959	2	0.19	in 2023
	73.5	in 1945	3	61.6	in 2010	3	9.61	in 1987	3	0.30	in 1956
4	73.4	in 1997	4	62.2	in 1960	4	8.31	in 2011	4	0.34	in 2025
	73.4	in 1948	5	62.5	in 1968	5	7.56	in 2010	5	0.38	in 2006
6	72.8	in 2012	6	62.9	in 1981	6	7.19	in 1998	6	0.41	in 2021
7	72.5	in 2022		62.9	in 1941	7	7.16	in 1970	7	0.48	in 2002
	72.5	in 2003	8	63.5	in 1996	8	6.93	in 1983	8	0.57	in 1945
9	72.0	in 2023	9	63.6	in 1983	9	6.60	in 1942	9	0.58	in 2018
	72.0	in 1977	10	64.0	in 1947	10	6.55	in 1969		0.58	in 2017
...			...								
43	68.9	in 2025	35	68.9	in 2025						
	68.9	in 2017		68.9	in 2017						
	68.9	in 1994		68.9	in 1994						

Normal Temperature for March at GIF = 69.1°

Normal Rainfall for March at GIF = 3.04 inches

BARTOW (Records began in June 1892):

Warmest Marches		Coolest Marches		Wettest Marches		Driest Marches	
1	76.1 in 2015	1	60.8 in 1914	1	11.53 in 1959	1	0.00 in 2020
2	74.6 in 1903	2	61.5 in 1969	2	10.25 in 1987	2	0.02 in 1908
3	74.0 in 1997	3	62.3 in 2010	3	8.99 in 1960	3	0.05 in 1945
4	73.3 in 2003	4	62.5 in 1901	4	8.57 in 1944	4	0.07 in 2023
5	73.2 in 1948	5	62.7 in 1947	5	8.12 in 2001	5	0.10 in 2006
6	72.6 in 2012	6	62.9 in 1960	6	8.10 in 1947	6	0.12 in 2025
7	72.5 in 1945	7	63.5 in 1996	7	7.72 in 1930	7	0.27 in 2021
	72.5 in 1907		63.5 in 1968	8	7.28 in 2010	8	0.36 in 2002
	72.5 in 1897	9	63.9 in 2018	9	7.11 in 1970	9	0.41 in 1999
10	72.3 in 2020	10	64.0 in 1983	10	7.00 in 1983	10	0.45 in 2007
...		...					
69	67.1 in 2025	33	67.1 in 2025				

Normal Temperature for March at BARF1 = 67.7°

Normal Rainfall for March at BARF1 = 2.84 inches

SARASOTA-BRADENTON AREA (Records began in January 1911):

Warmest Marches		Coolest Marches		Wettest Marches		Driest Marches	
1	73.1 in 2020	1	57.0 in 1915	1	11.10 in 1987	1	Trace in 1939
2	73.0 in 2012	2	59.3 in 1931	2	10.77 in 2001	2	0.10 in 1945
3	72.6 in 1997	3	60.4 in 2010	3	10.60 in 1958	3	0.18 in 2023
4	71.9 in 2024	4	60.7 in 1969	4	8.81 in 1959	4	0.21 in 1949
	71.9 in 2003	5	60.8 in 2013	5	8.63 in 1983	5	0.26 in 1956
	71.9 in 1948	6	61.7 in 1924	6	8.49 in 2011	6	0.28 in 2007
7	71.7 in 2022		61.7 in 1914	7	8.16 in 1998	7	0.34 in 1935
8	71.6 in 2023	8	62.0 in 1941	8	7.42 in 1982	8	0.37 in 1976
9	71.5 in 2015		62.0 in 1916	9	7.37 in 1969	9	0.44 in 1917
10	71.1 in 1921	10	62.6 in 1968	10	7.10 in 1970	10	0.47 in 2004
...		...				11	0.48 in 2017
37	68.7 in 2025	72	68.7 in 2025			12	0.52 in 1977
	68.7 in 2019		68.7 in 2019				0.52 in 1920
	68.7 in 1994		68.7 in 1994			14	0.55 in 1918
	68.7 in 1975		68.7 in 1975			15	0.56 in 1953
	68.7 in 1967		68.7 in 1967			16	0.58 in 2025

Normal Temperature for March at SRQ = 68.1°

Normal Rainfall for March at SRQ = 2.85 inches

VENICE (Records began in April 1955):

Warmest Marches		Coolest Marches		Wettest Marches		Driest Marches	
1	74.4 in 1997	1	61.6 in 1969	1	11.21 in 1987	1	0.00 in 2020
2	74.0 in 2012	2	62.8 in 2013	2	9.57 in 1983	2	0.05 in 2023
3	73.8 in 2003	3	62.9 in 1960	3	9.38 in 1998	3	0.10 in 1956
4	72.5 in 2023	4	63.2 in 1968	4	8.83 in 2010	4	0.14 in 2009
5	72.2 in 2015	5	63.3 in 1962	5	8.05 in 1970	5	0.19 in 1971
6	72.1 in 2022	6	63.4 in 2010	6	7.74 in 1959	6	0.33 in 1977
7	72.0 in 2024		63.4 in 1981	7	7.45 in 2011	7	0.36 in 2006
8	71.7 in 2020	8	63.9 in 1978	8	7.41 in 2001	8	0.39 in 1967
9	70.8 in 2016	9	64.3 in 1996	9	7.10 in 1969	9	0.40 in 1974
	70.8 in 2000		64.3 in 1988	10	6.60 in 1958	10	0.53 in 2004
			64.3 in 1958			...	
...		...				18	0.83 in 2025
35	67.8 in 2025	31	67.8 in 2025				

Normal Temperature for March at VNCf1 = 67.7°

Normal Rainfall for March at VNCf1 = 2.97 inches

MYAKKA RIVER STATE PARK (Temperature records began in March 1956
and Rainfall records began in Sep 1943):

Warmest Marches		Coolest Marches		Wettest Marches		Driest Marches	
1	74.5 in 2003	1	60.5 in 2013	1	12.88 in 1987	1	0.08 in 1956
2	74.2 in 1997	2	61.4 in 2010	2	12.24 in 1998	2	0.13 in 2006
3	72.6 in 2015	3	62.4 in 1960	3	9.74 in 1969	3	0.16 in 1945
4	71.9 in 2012	4	63.7 in 1971	4	8.80 in 1959	4	0.18 in 2023
5	71.6 in 1977	5	64.4 in 1996	5	8.21 in 1958	5	0.23 in 2020
6	71.3 in 2016		64.4 in 1959	6	7.81 in 1983		0.23 in 1966
	71.3 in 1976	7	64.8 in 1958	7	7.54 in 2010	7	0.29 in 2002
8	71.2 in 1992	8	65.2 in 1981	8	7.51 in 2011		0.29 in 1977
9	71.0 in 1982	9	65.4 in 2018	9	7.35 in 2001	9	0.41 in 1953
10	70.5 in 1995	10	65.7 in 1962	10	7.04 in 1947	10	0.42 in 1949
			65.7 in 1957				

Average Temperature for March 2025 = Not Available Yet

Normal Temperature for March at MKCF1 = 67.9°

Total Rainfall for March 2025 = Not Available Yet

Normal Rainfall for March at MKCF1 = 3.00 inches

WAUCHULA (Records began in January 1933):

Warmest Marches		Coolest Marches		Wettest Marches		Driest Marches	
1	72.9 in 1948	1	57.7 in 2013	1	12.14 in 1998	1	0.00 in 2020
2	72.6 in 2003	2	61.3 in 1969	2	9.22 in 1959		0.00 in 2002
3	72.0 in 1974	3	62.3 in 2018	3	7.72 in 1958	3	0.08 in 1967
	72.0 in 1945	4	62.5 in 1996	4	7.03 in 1987	4	0.12 in 2023
5	71.7 in 1938	5	62.7 in 1960	5	6.98 in 2001	5	0.18 in 1945
6	71.6 in 1939	6	63.4 in 1947	6	6.85 in 1965	6	0.20 in 1935
7	71.5 in 1935	7	63.5 in 1999	7	6.76 in 1947	7	0.22 in 2012
8	71.2 in 1977		63.5 in 1968	8	6.55 in 1983	8	0.30 in 2006
9	70.9 in 1997	9	63.6 in 1941	9	6.53 in 1969		0.30 in 1974
	70.9 in 1973	10	63.7 in 1983	10	5.80 in 1970	10	0.35 in 1976
...		...				11	0.48 in 2021
33	65.8 in 2025	25	65.8 in 2025			12	0.57 in 2004
							0.57 in 1939
						14	0.59 in 2015
						15	0.60 in 2025
							0.60 in 1946

Normal Temperature for March at WAUF1 = 66.2°

Normal Rainfall for March at WAUF1 = 2.99 inches

ARCHBOLD BIO STN (Records began in January 1969):

Warmest Marches		Coolest Marches		Wettest Marches		Driest Marches	
1	73.1 in 2003	1	58.6 in 2010	1	10.20 in 2010	1	0.05 in 2020
2	72.6 in 1997	2	58.8 in 2013	2	8.85 in 1970		0.05 in 1974
3	72.3 in 2015	3	61.1 in 1969	3	7.52 in 2003	3	0.06 in 2002
4	71.0 in 2024	4	62.2 in 1996	4	7.43 in 1969	4	0.22 in 2004
5	70.8 in 2022		62.2 in 1983	5	6.61 in 1987	5	0.50 in 2023
6	70.6 in 2016	6	62.9 in 2018	6	6.52 in 1982	6	0.66 in 2007
	70.6 in 1977	7	63.2 in 1999	7	6.42 in 1984	7	0.76 in 1999
	70.6 in 1974	8	63.3 in 1981	8	6.21 in 1988	8	0.78 in 1972
9	70.2 in 2012	9	63.8 in 1998	9	6.03 in 1986	9	0.83 in 2021
10	70.0 in 2023	10	63.9 in 1971	10	5.74 in 1993	10	0.87 in 2006
	70.0 in 2020	11	64.0 in 1993			...	
	70.0 in 1976	12	64.2 in 1979			26	1.88 in 2025
		13	64.4 in 2005				
		14	64.5 in 1984				
			64.5 in 1978				
		16	64.7 in 1986				
		17	64.8 in 1988				
		18	64.9 in 2025				

Normal Temperature for March at ACHF1 = 67.1°

Normal Rainfall for March at ACHF1 = 2.87 inches

PUNTA GORDA AREA (Records began in May 1914):

Warmest Marches		Coolest Marches		Wettest Marches		Driest Marches	
1	74.9 in 1948	1	57.9 in 1915	1	9.91 in 1947	1	0.00 in 1956
2	74.8 in 1945	2	62.0 in 2010	2	9.26 in 1970	2	Trace in 2020
3	73.7 in 1997	3	62.1 in 1916	3	8.71 in 2010		Trace in 1920
4	73.5 in 2024	4	62.3 in 1969	4	8.18 in 1987	4	0.09 in 2007
5	73.0 in 1953		62.3 in 1931	5	7.64 in 1930	5	0.10 in 1945
6	72.9 in 2003	6	62.4 in 2013	6	7.23 in 1960		0.10 in 1935
7	72.5 in 2023	7	63.5 in 1941	7	6.43 in 1958	7	0.15 in 1967
8	72.4 in 2015	8	64.2 in 1968	8	6.34 in 1969	8	0.16 in 1938
9	72.3 in 1944	9	64.3 in 1924	9	6.14 in 1983	9	0.21 in 1923
	72.3 in 1968	10	64.7 in 1971	10	5.84 in 1959	10	0.28 in 2006
...		
64	68.0 in 2025	41	68.0 in 2025	77	0.86 in 2025	30	0.86 in 2025
	68.0 in 2017		68.0 in 2017				

Normal Temperature for March at PGD = 68.5°

Normal Rainfall for March at PGD = 2.28 inches

FORT MYERS AREA (Records began in January 1902):

Warmest Marches		Coolest Marches		Wettest Marches		Driest Marches	
1	75.9 in 1997	1	61.1 in 1915	1	18.58 in 1970	1	0.00 in 1935
2	75.8 in 2022	2	62.4 in 1931	2	10.31 in 1958	2	0.02 in 2020
3	75.4 in 2020	3	63.0 in 2010	3	8.94 in 1947	3	0.03 in 1974
4	75.3 in 2023	4	63.4 in 1969	4	7.78 in 1903	4	0.04 in 1939
5	74.8 in 2003	5	63.7 in 1941	5	7.41 in 1983	5	0.05 in 1956
6	74.6 in 2015	6	64.3 in 2013	6	7.21 in 2010	6	0.08 in 1907
7	74.4 in 1948	7	64.4 in 1914	7	6.88 in 1941	7	0.09 in 1977
8	74.3 in 2012	8	64.5 in 1960	8	6.64 in 1931	8	0.10 in 2023
9	73.6 in 2024	9	64.6 in 1968	9	6.59 in 2005		0.10 in 1945
10	73.2 in 1921	10	65.0 in 1926	10	6.38 in 1984	10	0.13 in 2007
...		
53	70.7 in 2025	71	70.7 in 2025	91	0.61 in 2025	34	0.61 in 2025
	70.7 in 1994		70.7 in 1994				

Normal Temperature for March at FMY = 70.3°

Normal Rainfall for March at FMY = 2.07 inches

For more Climate information visit our web site at the following link:
<https://www.weather.gov/tampabay> and then go to the Climate and Past
Weather drop down menu above the graphical forecast images.