



# NOAA - National Weather Service

Tampa Bay Area

2525 14th Avenue SE, Ruskin, Florida 33570

813-645-2323 <https://weather.gov/tampabay>

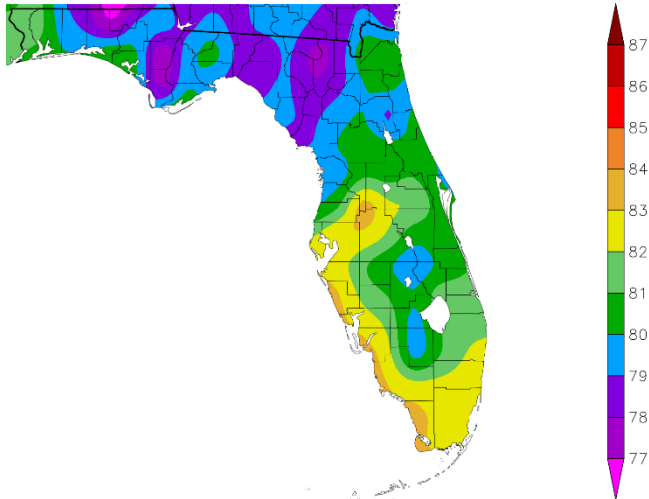
## June 2023 Climate Summary for West Central and Southwest Florida

Temperatures this June averaged slightly below normal to a little above normal across the region as upper level troughing was over the area for most of the month with no real big extremes in temperatures. However, during the last few days of the month the trough weakened with ridging building in aloft which brought some drier air along with near record high temperatures. In fact, thanks to this late month warm up a few locations ended up in the Top Ten Warmest Junes.

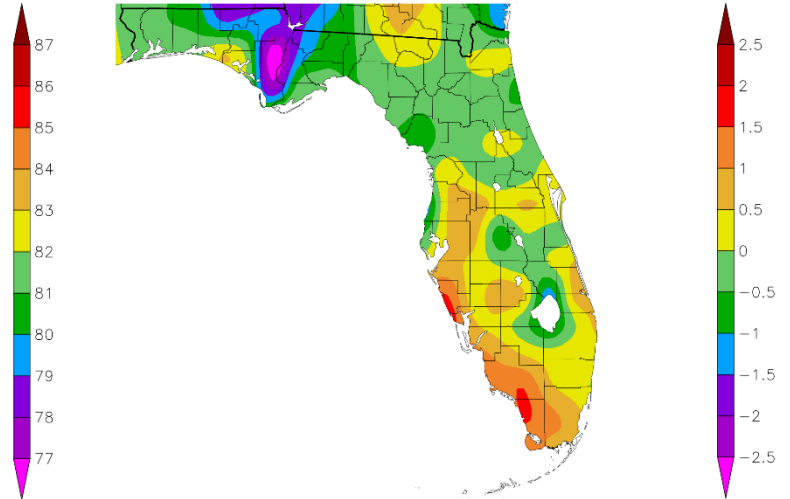
### JUNE TEMPERATURE RANKINGS (°F) :

Location	Rank	June 2023 Avg Temp	Normal June Temp	Dep fm Normal	Records Began
Plant City	2nd Warmest (tie)	84.3°	82.4°	+1.9°	Sep 1892
Fort Myers Area	8th Warmest (tie)	83.4°	82.3°	+1.1°	Jan 1902
Tampa Area	12th Warmest (tie)	83.2°	82.9°	+0.4°	Apr 1890
Venice	6th Warmest	83.1°	81.4°	+1.7°	May 1955
Sarasota-Bradenton Area	5th Warmest	82.9°	81.8°	+1.1°	Jan 1911
St Petersburg Area	65th Coolest (tie)	82.6°	82.8°	-0.2°	Aug 1914
Lakeland Area	23rd Warmest	82.4°	81.8°	+0.6°	Jan 1915
Punta Gorda Area	20th Warmest (tie)	82.1°	81.7°	+0.4°	May 1914
Winter Haven Area	50th Coolest (tie)	81.8°	83.0°	-1.2°	Mar 1941
Bartow	47th Warmest (tie)	81.4°	81.1°	+0.3°	Jun 1892
Inverness 3 SE	26th Warmest (tie)	81.1°	79.7°	+1.4°	Jul 1948
Wauchula 2 N	28th Warmest (tie)	81.0°	80.5°	+0.5°	Jan 1933
St. Leo	64th Warmest (tie)	80.6°	80.2°	+0.4°	Apr 1895
Brooksville Area	42nd Warmest (tie)	80.5°	80.1°	+0.4°	Jan 1892
Myakka River St. Pk	27th Coolest (tie)	80.5°	81.2°	-0.7°	Mar 1956
Tarpon Springs	54th Coolest (tie)	80.5°	82.0°	-1.5°	Jan 1892
Archbold Bio Stn	37th Coolest (tie)	80.4°	80.5°	-0.1°	Jan 1969
Chiefland 5 ESE	19th Coolest	78.9°	79.3°	-0.4°	Jul 1956

Temperature (F)  
6/1/2023 – 6/30/2023



Departure from Normal Temperature (F)  
6/1/2023 – 6/30/2023



Graphics Source: NOAA Regional Climate Centers

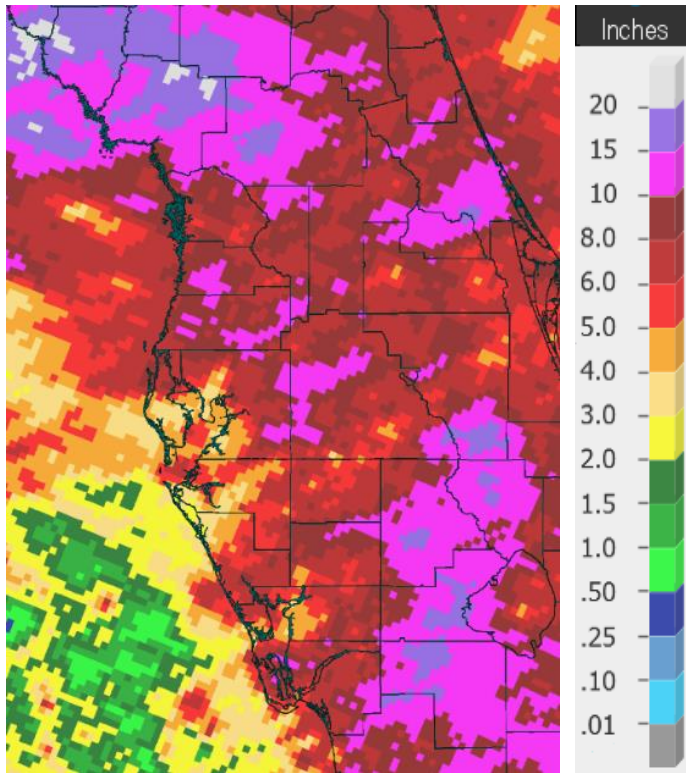
As for rainfall, it was not a typical June where we see our rainy season get underway with east to southeast flow around the Bermuda High. For most of the month we had upper level troughing over the eastern U.S. holding the ridge axis south of the area which kept a persistent southwest to west flow across the region. We saw rounds of thunderstorms move in from the Gulf of Mexico on different days, dumping locally heavy rainfall in some locations, especially across Levy County. However, on many days the region remained mostly dry with the showers and thunderstorms mainly over the eastern half of the Florida peninsula. Therefore, rainfall amounts varied from well below normal along parts of the west coast to well above normal over the southern interior and northern Nature Coast.

**JUNE RAINFALL RANKINGS (°F) :**

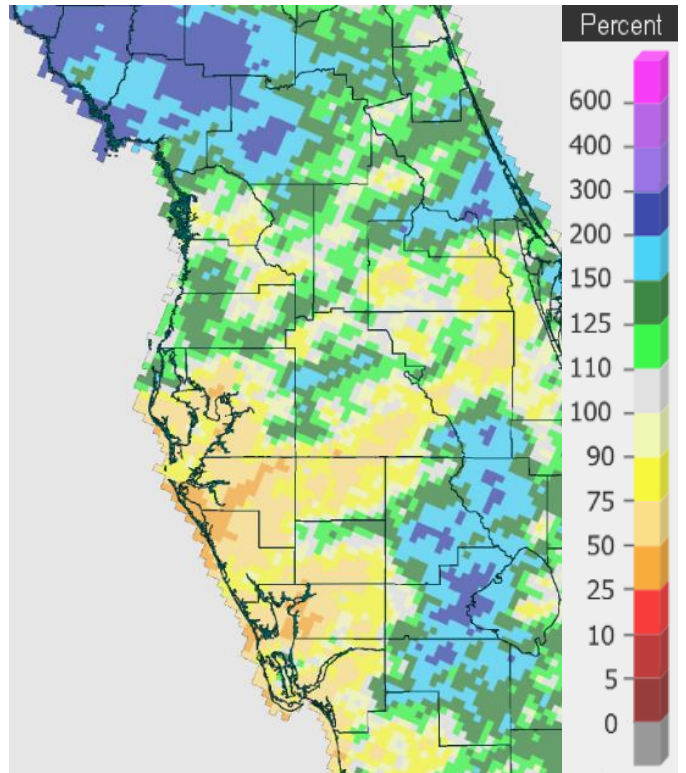
Location	Rank	June 2023 Rain Total	Normal June Rain	Dep fm Normal	Records Began
Archbold Bio Stn	5th Wettest	15.25	8.85	+6.43	Jan 1969
Chiefland 5 ESE	1st Wettest	15.10	8.03	+7.07	Jul 1956
Lakeland Area	5th Wettest	14.06	8.69	+5.37	Jan 1915
Plant City	35th Wettest	10.59	9.71	+0.88	Feb 1893
Brooksville Area	31st Wettest	9.94	7.91	+2.03	Jan 1892
Winter Haven Area	16th Wettest	9.71	7.36	+2.35	Mar 1941
Bartow	43rd Wettest	9.18	8.28	+0.90	Jun 1892
Myakka River St. Pk.	49th Driest	9.10	9.95	-0.85	Sep 1943
Inverness 3 SE	26th Wettest	8.51	8.13	+0.38	Jul 1948
Tarpon Springs	41st Wettest	7.31	7.06	+0.25	Jan 1892
St. Leo	55th Driest	6.87	8.34	-1.47	Apr 1895
St. Petersburg Area	68th Driest	6.08	6.79	-0.71	Aug 1914
Venice	27th Driest (tie)	5.03	7.81	-2.78	May 1955
Wauchula 2 N	20th Driest	5.09	8.46	-3.37	Jan 1933
Tampa Area	25th Driest	4.20	7.37	-3.17	Apr 1890
Punta Gorda Area	10th Driest	3.80	9.24	-5.44	May 1914
Sarasota-Bradenton Area	9th Driest	2.38	7.05	-4.67	Jan 1911

Contact: Paul Close, [Paul.Close@noaa.gov](mailto:Paul.Close@noaa.gov)

Date: 07/12/2023



**June 2023 Rainfall**



**Percent of Normal**

On the following pages are tables of the Top Ten Warmest, Coolest, Wettest and Driest Junes at some official NWS locations, which include the average/total for this June where available, and the 1991-2020 Normal (average) temperature and rainfall for the month of June.

**Chiefland 5 ESE (records began July 1956):**

Warmest Junes	Coollest Junes	Wettest Junes	Driest Junes
1 82.6 in 1998	1 77.0 in 1965	<b>1 15.10 in 2023</b>	1 1.00 in 1998
2 82.3 in 2016	2 77.1 in 1974	2 15.06 in 2003	2 1.27 in 1977
3 82.1 in 2022	77.1 in 1966	3 14.12 in 2012	3 1.97 in 1971
82.1 in 2015	4 77.4 in 1963	4 13.11 in 1974	4 2.33 in 1991
5 81.7 in 1989	5 77.7 in 1997	5 12.90 in 1965	5 2.62 in 2022
6 81.3 in 1985	77.7 in 1984	6 12.03 in 2018	6 3.10 in 1963
7 81.2 in 2018	7 77.9 in 2006	7 11.98 in 2002	7 3.27 in 1979
8 81.0 in 2019	77.9 in 1962	8 11.84 in 2009	8 3.48 in 1968
81.0 in 2011	9 78.0 in 1995	9 11.64 in 1983	9 3.51 in 2008
81.0 in 1977	10 78.1 in 1961	10 11.49 in 2016	10 3.63 in 2010
...	...		
<b>44 78.9 in 2023</b>	<b>19 78.9 in 2023</b>		

Normal Temperature for June Temp at CHIF1 = 79.3°  
Normal Rainfall for June at CHIF1 = 8.03 in.

-----

**Inverness 3 SE (records began July 1948):**

Warmest Junes	Coollest Junes	Wettest Junes	Driest Junes
1 83.6 in 1981	1 77.7 in 1995	1 21.84 in 2003	1 1.69 in 1977
2 83.5 in 2010	2 78.1 in 1976	2 17.44 in 1974	2 1.95 in 1981
3 83.4 in 1998	3 78.2 in 1997	3 15.45 in 1982	3 2.07 in 1998
4 83.2 in 2019	4 78.4 in 2003	4 14.88 in 2012	4 2.73 in 1954
5 82.9 in 1969	5 78.6 in 1966	5 13.29 in 2021	5 2.93 in 2010
82.9 in 1952	6 78.9 in 1991	6 13.13 in 1989	6 3.14 in 1964
7 82.7 in 1950	78.9 in 1955	7 12.19 in 1985	7 3.31 in 2015
8 82.5 in 2016	8 79.0 in 2012	8 12.06 in 1960	8 3.70 in 1963
82.5 in 1958	9 79.0 in 1994	9 12.04 in 1965	9 3.80 in 1987
10 82.4 in 2015	10 79.2 in 2017	10 11.66 in 2009	10 3.91 in 1979
82.4 in 2011		...	
82.4 in 1977		<b>26 8.51 in 2023</b>	
...	...		
<b>26 81.1 in 2023</b>	<b>45 81.1 in 2023</b>		
81.1 in 1973	81.1 in 1973		

Normal Temperature for June at INV1 = 79.7°  
Normal Rainfall for June at INV1 = 8.13 in.

-----

**Brooksville Area (records began January 1892):**

Warmest Junes	Coollest Junes	Wettest Junes	Driest Junes
1 84.2 in 1927	1 76.6 in 1917	1 21.68 in 2012	1 0.67 in 1998
2 82.7 in 1998	2 77.1 in 1920	2 20.81 in 1945	2 0.91 in 1979
3 82.2 in 1909	77.1 in 1894	3 19.29 in 2003	3 2.27 in 1977
82.2 in 1899	4 77.6 in 1966	4 14.64 in 2013	4 2.56 in 1956
5 82.1 in 1964	5 77.9 in 1910	5 14.37 in 1974	5 2.68 in 1988
82.1 in 1914	6 78.1 in 1946	6 14.29 in 1982	2.68 in 1931
7 81.9 in 2010	78.1 in 1930	7 14.19 in 1893	7 3.05 in 1933
81.9 in 1935	8 78.3 in 1976	8 13.94 in 1912	8 3.11 in 1954
9 81.7 in 2022	78.3 in 1965	9 13.89 in 1934	9 3.63 in 1918
81.7 in 1950	78.3 in 1919	10 13.69 in 1929	10 3.86 in 2011
81.7 in 1944			
...	...	...	...
<b>42 80.5 in 2023</b>	<b>64 80.5 in 2023</b>	<b>31 9.94 in 2023</b>	<b>101 9.94 in 2023</b>
80.5 in 1978	80.5 in 1978		
80.5 in 1963	80.5 in 1963		
80.5 in 1924	80.5 in 1924		
80.5 in 1902	80.5 in 1902		
80.5 in 1895	80.5 in 1895		

Normal Temperature for June at BKV = 80.1°  
Normal Rainfall for June at BKV = 7.91 in.

**St. Leo (records began April 1895):**

Warmest Junes	Coollest Junes	Wettest Junes	Driest Junes
1 86.4 in 1998	1 75.9 in 1930	1 24.26 in 1934	1 0.08 in 1998
2 83.3 in 1981	2 77.1 in 1920	2 20.30 in 2012	2 1.60 in 1973
3 83.1 in 1952	3 77.3 in 1919	3 19.08 in 1974	3 2.14 in 1979
4 82.9 in 1897	4 77.7 in 1966	4 18.00 in 1896	4 2.33 in 1967
5 82.8 in 1948	77.7 in 1923	5 17.25 in 1943	5 2.68 in 1948
6 82.7 in 1899	6 78.1 in 2012	6 16.90 in 1945	6 2.95 in 1951
7 82.6 in 2009	78.1 in 1933	7 16.31 in 2005	7 3.02 in 1958
82.6 in 2004	8 78.3 in 1922	8 14.70 in 1999	8 3.16 in 1895
82.6 in 1898	78.3 in 1916	9 14.35 in 2002	9 3.28 in 1980
10 82.4 in 1985	78.3 in 1903	10 13.91 in 1910	10 3.62 in 1915
82.4 in 1950		...	...
...	...	<b>75 6.87 in 2023</b>	<b>55 6.87 in 2023</b>
<b>64 80.6 in 2023</b>	<b>60 80.6 in 2023</b>		
80.6 in 2003	80.6 in 2003		
80.6 in 1975	80.6 in 1975		
80.6 in 1951	80.6 in 1951		
80.6 in 1940	80.6 in 1940		

Normal Temperature for June at STLF1 = 80.2°  
Normal Rainfall for June at STLF1 = 8.34 in.

**Tarpon Springs (records began January 1892):**

Warmest Junes	Coollest Junes	Wettest Junes	Driest Junes
1 84.6 in 2004	1 77.2 in 1894	1 21.73 in 2012	1 0.62 in 1991
2 84.2 in 1998	2 77.9 in 1907	2 18.29 in 1974	2 0.72 in 1998
3 84.0 in 2019	77.9 in 1900	3 18.10 in 1909	3 1.17 in 1935
4 83.9 in 2010	4 78.1 in 1939	4 14.08 in 1934	4 1.47 in 1955
5 83.6 in 2005	78.1 in 1908	5 13.47 in 1900	5 1.49 in 1950
6 83.3 in 2018	6 78.3 in 1892	6 13.21 in 1912	6 1.56 in 1947
83.3 in 1994	7 78.4 in 1974	7 12.71 in 1943	7 1.63 in 1980
8 83.2 in 2020	78.4 in 1955	8 12.12 in 1957	8 1.70 in 1931
83.2 in 2016	78.4 in 1910	9 11.69 in 2001	9 1.73 in 1979
83.2 in 1927	78.4 in 1895	10 11.60 in 2019	10 1.83 in 1971
...	...		1.83 in 1921
<b>70 80.5 in 2023</b>	<b>54 80.5 in 2023</b>	...	...
80.5 in 2021	80.5 in 2021	<b>41 7.31 in 2023</b>	<b>90 7.31 in 2023</b>
80.5 in 1940	80.5 in 1940		
80.5 in 1932	80.5 in 1932		
80.5 in 1926	80.5 in 1926		
80.5 in 1909	80.5 in 1909		

Normal Temperature for June at TRPF1 = 82.0°

Normal Rainfall for June at TRPF1 = 7.06 in.

---

**Tampa Area (records began April 1890):**

Warmest Junes	Coollest Junes	Wettest Junes	Driest Junes
1 85.6 in 1998	1 78.5 in 1930	1 18.66 in 2012	1 1.26 in 1918
2 85.2 in 2022	2 78.6 in 1955	2 18.52 in 1945	2 1.46 in 1997
3 84.8 in 2010	3 78.9 in 1976	3 15.92 in 1934	3 1.47 in 1931
4 84.0 in 2020	78.9 in 1913	4 13.75 in 1974	4 1.77 in 2014
5 83.8 in 2021	78.9 in 1892	5 13.47 in 1912	5 1.86 in 1951
83.8 in 2019	6 79.1 in 1966	6 13.42 in 1896	6 2.03 in 1978
6 83.7 in 1985	7 79.2 in 1923	7 13.19 in 2003	7 2.05 in 1970
83.7 in 1977	79.2 in 1910	8 12.60 in 2021	8 2.07 in 1979
9 83.6 in 2018	79.2 in 1903	9 12.54 in 1943	9 2.41 in 1922
83.6 in 2011	10 79.3 in 1916	10 12.41 in 1892	10 2.54 in 1971
11 83.3 in 2008	79.3 in 1908		...
<b>12 83.2 in 2023</b>	79.3 in 1894		<b>25 4.20 in 2023</b>
83.2 in 2004			

Normal Temperature for June at TPA = 82.9°

Normal Rainfall for June at TPA = 7.37 in.

**St Petersburg (records began August 1914):**

Warmest Junes	Coollest Junes	Wettest Junes	Driest Junes
1 86.5 in 2010	1 79.1 in 1955	1 23.00 in 1974	1 0.90 in 1979
2 84.9 in 1998	2 79.6 in 1930	2 16.88 in 1943	2 1.03 in 1948
3 84.6 in 2004	3 80.0 in 1974	3 16.60 in 1995	3 1.26 in 1931
4 84.5 in 1977	4 80.3 in 1923	4 14.80 in 2016	4 2.05 in 1973
5 84.3 in 1973	80.3 in 1920	5 12.99 in 2003	5 2.21 in 1993
6 84.2 in 1969	6 80.4 in 1976	6 12.95 in 2012	6 2.35 in 1949
7 84.1 in 1987	80.4 in 1922	7 12.29 in 1939	7 2.36 in 2004
84.1 in 1981	80.4 in 1916	8 12.12 in 1945	8 2.56 in 1977
9 84.0 in 1944	9 80.5 in 1995	9 11.63 in 1968	9 2.63 in 1980
10 83.9 in 2020	80.5 in 1968	10 11.02 in 1990	10 2.73 in 1916
	80.5 in 1966	...	...
	80.5 in 1956	<b>43 6.08 in 2023</b>	<b>68 6.08 in 2023</b>
	80.5 in 1949		
...	...		
<b>39 82.6 in 2023</b>	<b>65 82.6 in 2023</b>		
82.6 in 2017	82.6 in 2017		
82.6 in 1975	82.6 in 1975		
82.6 in 1937	82.6 in 1937		

Normal Temperature for June at SPG = 82.8°  
Normal Rainfall for June at SPG = 6.79 in.

---

**Plant City (records began September 1892):**

Warmest Junes	Coollest Junes	Wettest Junes	Driest Junes
1 84.5 in 2019	1 76.4 in 1933	1 17.08 in 1968	1 0.56 in 1979
<b>2 84.3 in 2023</b>	2 76.5 in 1930	2 17.01 in 2017	2 1.09 in 1948
84.3 in 2020	3 77.1 in 1931	3 16.48 in 1943	3 1.50 in 1961
4 84.1 in 2022	4 77.6 in 1976	4 16.44 in 1896	4 1.72 in 1931
5 83.8 in 1998	5 77.9 in 1936	5 16.37 in 1945	5 1.95 in 1998
6 83.5 in 2021	6 78.0 in 1966	6 16.24 in 1986	6 2.50 in 1993
7 83.4 in 2010	7 78.1 in 1938	7 15.44 in 2013	7 2.65 in 1956
8 83.2 in 2017	78.1 in 1932	8 15.34 in 1992	8 3.08 in 1898
83.2 in 2016	78.1 in 1925	9 14.98 in 2012	9 3.44 in 1950
83.2 in 1981	10 78.2 in 1929	10 14.93 in 1934	10 3.53 in 1973
	78.2 in 1907		3.53 in 1895
		...	...
		<b>35 10.59 in 2023</b>	<b>90 10.59 in 2023</b>

Normal Temperature for June at PLCF1 = 82.4°  
Normal Rainfall for June at PLCF1 = 9.71 in.

---

**Lakeland** (records began January 1915):

Warmest Junes	Coollest Junes	Wettest Junes	Driest Junes
1 84.8 in 2010	1 76.8 in 1930	1 15.55 in 2012	1 1.86 in 1998
2 84.5 in 1998	2 77.8 in 1966	2 14.86 in 1968	2 1.87 in 1948
3 83.5 in 1985	77.8 in 1929	3 14.63 in 1934	3 2.22 in 1915
4 83.4 in 2015	4 78.2 in 1919	4 14.48 in 2005	4 2.54 in 1931
5 83.3 in 1987	5 78.3 in 2007	<b>5 14.06 in 2023</b>	5 2.97 in 1971
83.3 in 1981	78.3 in 1920	6 14.00 in 1939	6 3.06 in 1979
83.3 in 1977	7 78.4 in 1968	7 13.22 in 1974	7 3.18 in 2010
8 83.1 in 2019	8 78.5 in 1965	8 13.12 in 1930	8 3.31 in 1970
83.1 in 2016	9 79.0 in 1976	9 13.10 in 2013	9 3.37 in 1952
10 83.0 in 1990	10 79.2 in 1974	10 13.09 in 1992	10 3.47 in 1955
83.0 in 1989	79.2 in 1923		3.47 in 1918
...	79.2 in 1921		
<b>23 82.4 in 2023</b>			

Normal Temperature for June at LLDF1 = 81.8°

Normal Rainfall for June at LLDF1 = 8.69 in.

-----

**Winter Haven Area** (records began March 1941):

Warmest Junes	Coollest Junes	Wettest Junes	Driest Junes
1 85.5 in 1998	1 77.6 in 1968	1 16.44 in 1992	1 0.66 in 1998
2 84.9 in 2010	2 78.5 in 1976	2 15.04 in 1968	2 2.49 in 1993
3 84.5 in 2019	3 78.6 in 1974	3 14.46 in 1945	3 2.62 in 1973
4 84.2 in 1985	78.6 in 1971	4 13.75 in 2015	4 2.72 in 1957
5 84.0 in 1989	5 78.9 in 1972	5 13.67 in 2012	5 3.38 in 2000
6 83.7 in 2004	6 79.0 in 1966	6 13.07 in 1974	6 3.41 in 1963
7 83.6 in 2022	7 79.2 in 1980	7 12.50 in 2005	7 3.50 in 2007
83.6 in 2015	79.2 in 1965	8 12.08 in 2013	8 3.52 in 1979
83.6 in 1952	9 79.4 in 1960	9 11.87 in 1994	9 3.58 in 1952
10 83.4 in 2020	10 79.5 in 1967	10 11.25 in 2017	10 3.70 in 1970
83.4 in 2016	79.5 in 1962	...	
83.4 in 2011		<b>16 9.71 in 2023</b>	
...	...		
<b>24 81.8 in 2023</b>	<b>50 81.8 in 2023</b>		
81.8 in 2017	81.8 in 2017		

Normal Temperature for June at GIF = 83.0°

Normal Rainfall for June at GIF = 7.36 in.



**Bartow** (records began June 1892):

Warmest Junes	Coollest Junes	Wettest Junes	Driest Junes
1 85.9 in 1998	1 77.4 in 1894	1 21.62 in 1912	1 0.73 in 1964
2 85.7 in 2015	2 77.7 in 1913	2 17.76 in 1934	2 0.79 in 1998
3 84.0 in 2014	3 77.9 in 1936	3 16.97 in 2005	3 1.41 in 1948
4 83.9 in 2010	4 78.1 in 1892	4 16.32 in 2003	4 2.12 in 1931
5 83.7 in 1927	5 78.4 in 1930	5 15.78 in 1939	5 2.41 in 1973
6 83.4 in 1969	6 78.6 in 1966	6 15.03 in 1945	6 2.59 in 1905
83.4 in 1944	7 78.7 in 1938	7 15.00 in 1949	7 3.09 in 1993
8 83.3 in 2013	8 78.8 in 1919	8 14.39 in 1894	8 3.22 in 1950
9 83.2 in 1981	78.8 in 1912	9 14.35 in 1942	9 3.52 in 1980
10 83.1 in 2009	10 79.0 in 1972	10 13.74 in 1953	10 3.64 in 1911
...	79.0 in 1916	...	...
<b>47 81.4 in 2023</b>	<b>78 81.4 in 2023</b>	<b>43 9.18 in 2023</b>	<b>90 9.18 in 2023</b>
81.4 in 2017	81.4 in 2017		
81.4 in 1997	81.4 in 1997		
81.4 in 1991	81.4 in 1991		
81.4 in 1899	81.4 in 1899		

Normal Temperature for June at BARF1 = 81.1°

Normal Rainfall for June at BARF1 = 8.28 in.

-----

**Sarasota-Bradenton Area** (records began January 1911):

Warmest Junes	Coollest Junes	Wettest Junes	Driest Junes
1 83.9 in 1998	1 76.4 in 1913	1 25.60 in 1912	1 0.64 in 1998
2 83.5 in 2010	2 77.5 in 1930	2 23.30 in 1943	2 1.20 in 2011
3 83.4 in 2019	3 77.8 in 1976	3 22.34 in 1992	3 1.28 in 1918
83.4 in 2016	4 78.0 in 1916	4 15.45 in 2012	4 1.30 in 2007
<b>5 82.9 in 2023</b>	5 78.1 in 1955	5 13.49 in 1945	5 1.46 in 1956
6 82.8 in 2020	6 78.2 in 1933	6 13.39 in 1968	6 1.58 in 1951
7 82.6 in 2021	7 78.3 in 1956	7 12.40 in 1974	7 1.68 in 1926
8 82.2 in 2022	78.3 in 1931	8 12.27 in 1976	8 1.69 in 1948
82.2 in 2018	9 78.5 in 1947	9 12.08 in 1957	<b>9 2.38 in 2023</b>
10 82.1 in 1950	78.5 in 1920	10 11.93 in 2020	10 2.44 in 1931

Normal Temperature for June at SRQ = 81.8°

Normal Rainfall for June at SRQ = 7.05 in.

**Myakka River State Park** (Temperature records began March 1956/  
Rainfall records began September 1943):

Warmest Junes	Coollest Junes	Wettest Junes	Driest Junes
1 85.2 in 1998	1 78.1 in 1962	1 26.16 in 1992	1 1.75 in 2007
2 84.4 in 2010	2 78.4 in 1968	2 22.74 in 2003	2 1.76 in 2011
3 83.0 in 2019	3 78.5 in 1976	3 20.94 in 2017	3 2.25 in 2018
83.0 in 2018	4 78.6 in 1984	4 20.03 in 1974	4 2.49 in 1980
5 82.5 in 1994	78.6 in 1960	5 19.92 in 2012	5 2.87 in 1984
6 82.3 in 1981	6 78.9 in 1974	6 17.03 in 1995	2.87 in 1948
7 82.1 in 2015	7 79.2 in 1961	7 16.60 in 1968	7 3.07 in 1979
82.1 in 1985	79.2 in 1959	8 16.53 in 2005	8 3.20 in 1988
9 82.0 in 2011	9 79.4 in 1986	9 15.84 in 2013	9 3.53 in 1955
10 81.9 in 2016	79.4 in 1963	10 15.77 in 1981	10 3.55 in 1956
...	...	...	...
<b>33 80.5 in 2023</b>	<b>27 80.5 in 2023</b>	<b>31 9.10 in 2023</b>	<b>49 9.10 in 2023</b>
80.5 in 1995	80.5 in 1995		

Normal Temperature for June at MKCF1 = 81.2°  
Normal Rainfall for June at MKCF1 = 9.95 in.

**Venice** (records began May 1955):

Warmest Junes	Coollest Junes	Wettest Junes	Driest Junes
1 86.4 in 2010	1 78.6 in 1955	1 25.91 in 1992	1 1.04 in 1980
2 85.7 in 1998	2 78.7 in 1966	2 19.31 in 2003	1.04 in 1979
3 84.0 in 2019	3 79.0 in 1988	3 19.18 in 2005	3 1.06 in 1988
4 83.9 in 2004	79.0 in 1984	4 16.78 in 2012	4 1.33 in 1990
5 83.7 in 2011	5 79.3 in 1974	5 14.16 in 1995	5 1.38 in 1960
<b>6 83.1 in 2023</b>	79.3 in 1961	6 12.59 in 1962	6 1.57 in 2011
7 83.0 in 2009	79.3 in 1960	7 11.93 in 1974	7 1.69 in 2018
8 82.8 in 2020	8 79.6 in 1975	8 11.50 in 1982	8 2.01 in 1961
82.8 in 2018	79.6 in 1967	9 11.17 in 1968	9 2.43 in 1985
82.8 in 2013	79.6 in 1956	10 10.76 in 2001	10 2.45 in 1955
		...	...
		<b>40 5.03 in 2023</b>	<b>27 5.03 in 2023</b>
		5.03 in 2019	5.03 in 2019

Normal Temperature for June at VNCF1 = 81.4°  
Normal Rainfall for June at VNCF1 = 7.81 in.

**Wauchula 2 N** (records began January 1933):

Warmest Junes	Coollest Junes	Wettest Junes	Driest Junes
1 83.9 in 2009	1 78.0 in 1955	1 19.40 in 1939	1 1.69 in 1998
2 83.4 in 1998	2 78.1 in 2012	2 17.61 in 2017	2 2.40 in 1952
3 82.9 in 2008	78.1 in 1996	3 16.20 in 2005	3 3.02 in 1948
4 82.6 in 1993	78.1 in 1976	4 16.03 in 1952	4 3.17 in 2018
82.6 in 1985	5 78.2 in 1994	5 15.96 in 1982	5 3.18 in 2000
82.6 in 1969	6 78.9 in 1999	6 15.85 in 1968	6 3.26 in 1964
7 82.2 in 1987	78.9 in 1966	7 15.24 in 1945	7 3.48 in 1958
82.2 in 1981	78.9 in 1956	8 15.11 in 1913	8 3.53 in 2010
9 82.1 in 2010	9 79.0 in 1965	9 14.97 in 1974	9 3.69 in 1956
10 81.9 in 2019	10 79.1 in 2014	10 14.77 in 1962	10 3.72 in 1960
81.9 in 1990	79.1 in 2007		...
...	...		<b>20 5.09 in 2023</b>
<b>28 81.0 in 2023</b>	<b>61 81.0 in 2023</b>		
81.0 in 1992	81.0 in 1992		

Normal Temperature for June at WAUF1 = 80.5°

Normal Rainfall for June at WAUF1 = 8.46 in.

---

**Archbold Bio Stn** (records began January 1969):

Warmest Junes	Coollest Junes	Wettest Junes	Driest Junes
1 83.5 in 2010	1 77.1 in 1984	1 18.66 in 2002	1 0.90 in 1998
2 82.2 in 1998	2 77.4 in 1976	2 17.33 in 2013	2 1.70 in 1979
3 81.9 in 2017	3 78.1 in 1999	3 15.85 in 1986	3 2.40 in 1980
4 81.6 in 2016	4 78.2 in 2007	4 15.77 in 1992	4 2.79 in 2010
5 81.4 in 2019	78.2 in 1971	<b>5 15.25 in 2023</b>	5 3.01 in 1988
81.4 in 1981	6 78.4 in 1970	6 14.12 in 1974	6 3.27 in 1987
7 81.2 in 1985	7 78.5 in 1996	7 13.89 in 2005	7 3.76 in 2000
8 81.1 in 2015	8 78.7 in 1974	8 12.73 in 2015	8 4.64 in 2006
9 81.0 in 1987	9 78.8 in 1983	9 12.21 in 1969	9 4.79 in 1989
10 80.8 in 2004	78.8 in 1973	10 11.35 in 1994	10 4.89 in 2014
...	...		
<b>18 80.4 in 2023</b>	<b>37 80.4 in 2023</b>		
80.4 in 1977	80.4 in 2023		

Normal Temperature for June at ACHF1 = 80.5°

Normal Rainfall for June at ACHF1 = 8.85 in

**Punta Gorda Area** (records began May 1914):

Warmest Junes	Coollest Junes	Wettest Junes	Driest Junes
1 84.1 in 1998	1 78.3 in 1930	1 23.99 in 1974	1 2.00 in 1979
2 83.8 in 2010	2 78.9 in 1938	2 20.29 in 1939	2 2.16 in 1960
3 83.6 in 2018	3 79.1 in 1976	3 19.75 in 1992	3 2.30 in 1920
4 83.3 in 2020	79.1 in 1929	4 17.63 in 1995	4 3.06 in 1924
83.3 in 1948	5 79.2 in 1936	5 16.66 in 2003	5 3.08 in 1927
6 83.1 in 1985	6 79.3 in 1971	6 16.51 in 1999	6 3.37 in 1964
83.1 in 1951	79.3 in 1955	7 15.93 in 1943	7 3.48 in 2007
8 83.0 in 2016	8 79.5 in 1968	8 15.92 in 1949	3.48 in 1977
83.0 in 1945	79.5 in 1967	9 15.39 in 1946	3.48 in 1916
10 82.9 in 1994	79.5 in 1923	10 14.81 in 2017	<b>10 3.80 in 2023</b>
...			
<b>20 82.1 in 2023</b>			
82.1 in 2022			
82.1 in 2011			
82.1 in 1964			
82.1 in 1944			
82.1 in 1924			

Normal Temperature for June at PNTF1 = 81.7°

Normal Rainfall for June at PNTF1 = 9.24 in.

-----

**Fort Myers Area** (records began January 1902):

Warmest Junes	Coollest Junes	Wettest Junes	Driest Junes
1 85.9 in 1981	1 78.5 in 1908	1 27.61 in 1912	1 1.99 in 1980
2 85.3 in 2010	2 78.6 in 1904	2 20.25 in 1936	2 2.48 in 2014
3 84.5 in 1998	3 78.7 in 1930	3 20.10 in 1974	3 3.59 in 1932
4 84.0 in 1997	78.7 in 1910	4 18.73 in 1992	4 3.73 in 1944
5 83.8 in 1994	5 78.8 in 1976	5 18.42 in 2005	5 3.76 in 1985
6 83.7 in 1985	6 78.9 in 1955	6 17.92 in 1983	3.76 in 1913
83.7 in 1982	7 79.0 in 1912	7 16.43 in 1939	7 3.96 in 1931
<b>8 83.4 in 2023</b>	79.0 in 1903	8 16.10 in 1959	8 3.99 in 1973
83.4 in 1980	9 79.2 in 1917	9 16.06 in 1943	9 4.52 in 2001
10 83.2 in 2009	10 79.3 in 1918	10 15.11 in 1922	10 4.58 in 1964
83.2 in 1944	79.3 in 1913		

Normal Temperature for June at FMY = 82.3°

Total Rainfall for June 2023 = \*6.14 in.

Normal Rainfall for June at FMY = 9.66 in.

\* Rainfall missing on June 2<sup>nd</sup>, radar estimate around 1.90 inch

-----

For more Climate information visit our web site at the following link:  
<https://www.weather.gov/tampabay> and then go to the Climate and Past Weather link above the graphical forecast images.