



NOAA - National Weather Service

Tampa Bay Area

2525 14th Avenue SE, Ruskin, Florida 33570

813-645-2323 <https://weather.gov/tampabay>

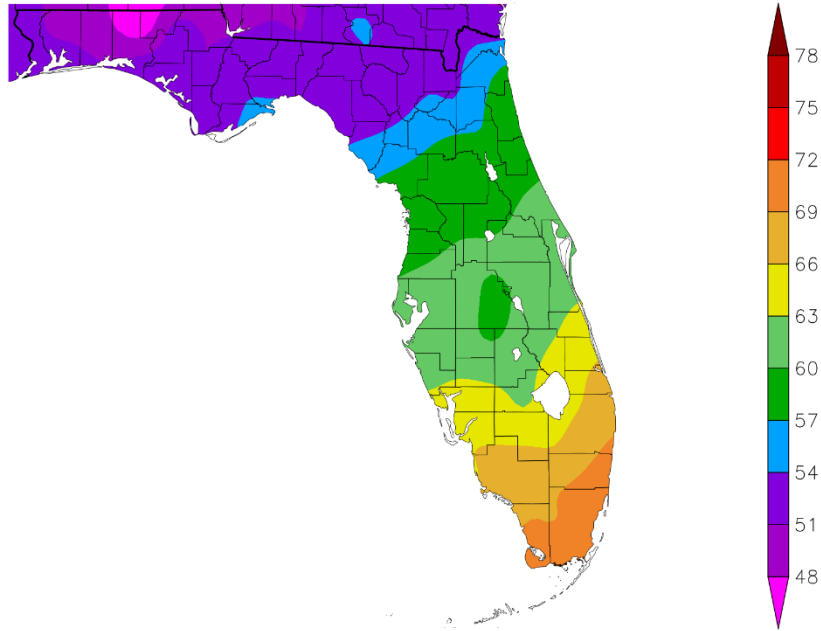
January 2024 Climate Summary for West Central and Southwest Florida

This January we saw a wide range of temperatures with many days below normal, while a few others were over 10 degrees above normal. On three of the coldest days freezing temperatures occurred across parts of the Nature Coast while in the last week we saw numerous record high minimums set or tied and a few new record highs. Overall, the average temperatures for the month ranged from about 1.5°F below normal to almost 2°F above normal, with none of the official climate sites in the Top Ten Warmest or Coldest for January.

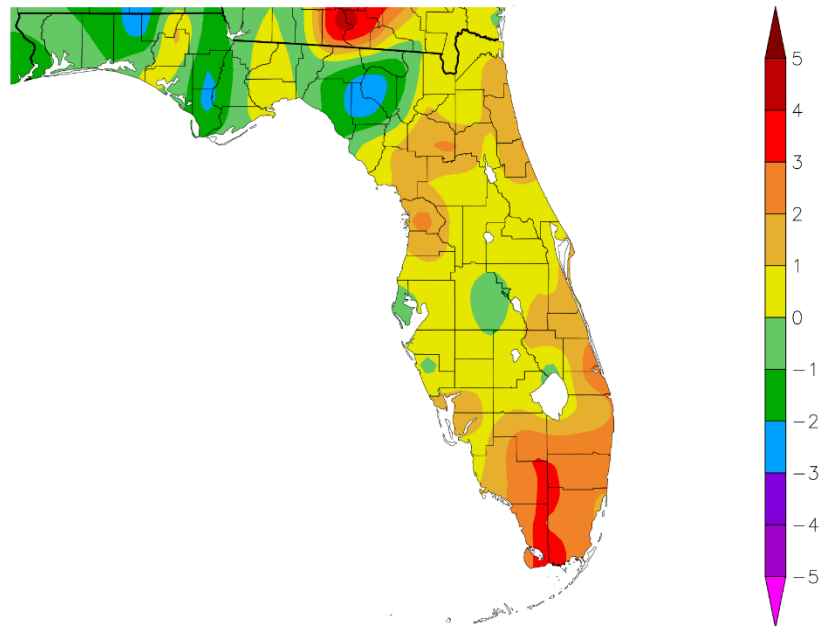
JANUARY TEMPERATURE RANKINGS (°F)

Location	January 2024		Normal Jan Temp	Dep fm Normal	Records Began
	Rank	Avg Temp			
Fort Myers Area	44th Warmest (tie)	65.5°	64.7°	+0.8°	Jan 1902
Punta Gorda Area	35th Warmest (tie)	64.7°	62.9°	+1.8°	May 1914
Venice	21st Warmest (tie)	63.0°	62.0°	+1.0°	May 1955
Sarasota-Bradenton Area	31st Warmest (tie)	63.0°	62.4°	+0.6°	Jan 1911
Lakeland Area	33rd Warmest (tie)	63.1°	62.2°	+0.9°	Jan 1915
Plant City	34th Warmest (tie)	62.5°	62.4°	+0.1°	Sep 1892
Archbold Bio Stn	20th Warmest	61.9°	61.4°	+0.5°	Jan 1969
Tampa Area	77th Coolest (tie)	61.7°	62.0°	-0.3°	Apr 1890
Winter Haven Area	35th Coolest (tie)	61.5°	62.2°	-0.7°	Mar 1941
St Petersburg Area	39th Coolest	61.4°	62.2°	-0.8°	Aug 1914
Bartow	47th Coolest (tie)	61.0°	61.2°	-0.2°	Jun 1892
Wauchula 2 N	52nd Warmest	60.8°	60.2°	+0.6°	Jan 1933
Myakka River State Park	25th Coolest (tie)	60.8°	62.2°	-1.4°	Mar 1956
St. Leo	61st Warmest (tie)	60.1°	59.7°	+0.4°	Apr 1895
Brooksville Area	60th Warmest	59.2°	57.5°	+1.7°	Jan 1892
Inverness 3 SE	28th Warmest (tie)	58.0°	56.0°	+2.0°	Jul 1948
Chiefland 5 ESE	28th Warmest	55.6°	55.3°	+0.3°	Jul 1956

Temperature (F)
1/1/2024 - 1/31/2024



Departure from Normal Temperature (F)
1/1/2024 - 1/31/2024

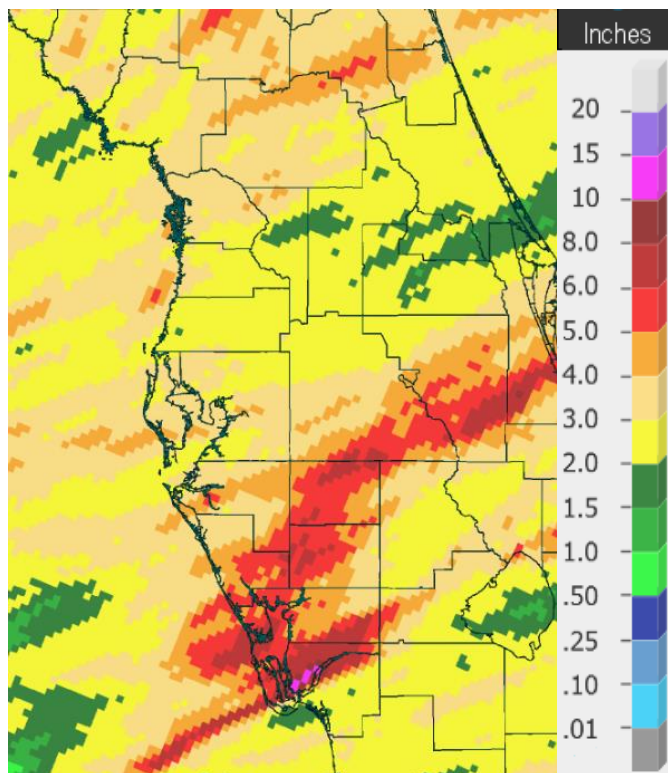


Graphics Source: NOAA Regional Climate Centers

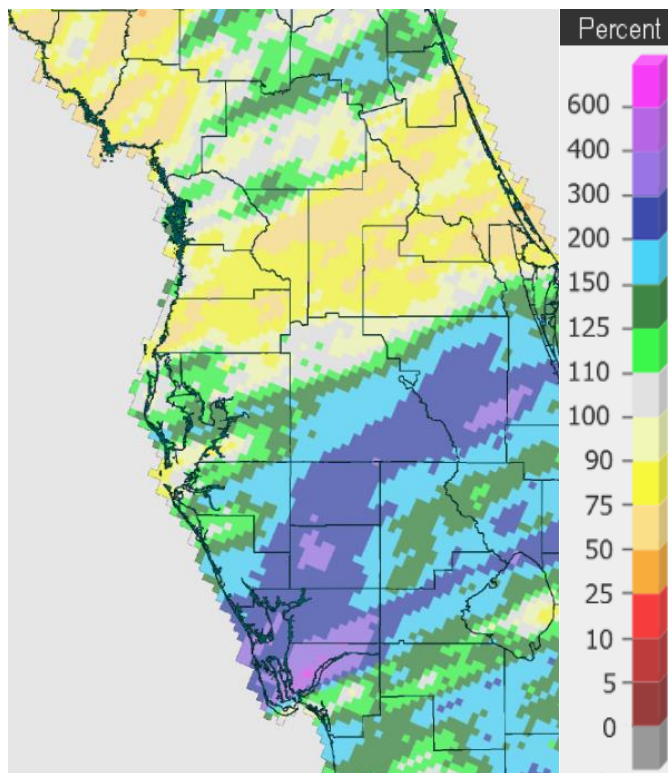
Rainfall ranged from below normal across parts of the Nature Coast to well above normal south of Interstate 4 with some parts of southwest Florida and the central and southern interior more than double the normal amount for January. These high amounts placed a couple of the official reporting sites in the Top Ten Wettest for January.

JANUARY RAINFALL (inches):

Location	January 2024		Normal Jan Rain	Dep fm Normal	Records Began
	Rank	Rain Total			
Venice	8th Wettest	5.00	2.68	+2.32	May 1955
Fort Myers Area	7th Wettest	4.86	2.43	+2.43	Jan 1902
Myakka River State Park	12th Wettest	4.53	2.85	+1.68	Sep 1943
Sarasota-Bradenton Area	16th Wettest	4.31	2.79	+1.52	Jan 1911
St Petersburg Area	20th Wettest	4.11	2.52	+1.59	Aug 1914
Punta Gorda Area	15th Wettest	4.00	2.32	+1.68	May 1914
Bartow	24th Wettest	3.98	2.66	+1.32	Jun 1892
Inverness 3 SE	26th Wettest	3.66	2.97	+0.69	Jul 1948
Tampa Area	41st Wettest	3.12	2.65	+0.47	Apr 1890
Lakeland Area	33rd Wettest	3.02	2.99	+0.03	Jan 1915
Winter Haven Area	26th Wettest	2.86	2.49	+0.37	Mar 1941
Plant City	81st Driest	2.80	3.00	-0.20	Sep 1892
Archbold Bio Stn	16th Wettest	2.64	2.18	+0.46	Jan 1969
Wauchula 2 N	33rd Wettest	2.44	2.29	+0.15	Jan 1933
Brooksville Area	65th Driest	2.33	3.01	-0.68	Jan 1892
Tarpon Springs	64th Driest	2.33	3.03	-0.70	Jan 1892
St. Leo	58th Driest	2.14	3.06	-0.92	Apr 1895
Chiefland 5 ESE	37th Driest	3.39	3.61	-0.22	Jul 1956



Rainfall January 2024



Percent of Normal

Following are tables of the Top Ten Warmest, Coolest, Wettest, and Driest Januarys at some official NWS locations, which include the average/total for this January where available, and the 1991-2020 Normal (average) temperature and rainfall for the month of January.

CHIEFLAND 5 SE (Records began in July 1956):

Warmest Januarys	Coolest Januarys	Wettest Januarys	Driest Januarys
1 67.8 in 1974	1 47.3 in 1981	1 14.50 in 1964	1 0.25 in 1974
2 62.9 in 1993	2 47.4 in 1977	2 10.59 in 1979	2 0.36 in 2013
3 62.8 in 1972	3 48.7 in 1958	3 9.53 in 1994	3 0.47 in 1957
4 62.3 in 2013	4 49.0 in 2003	4 9.39 in 1991	4 0.61 in 1968
5 61.5 in 1957	5 49.5 in 2010	5 7.65 in 1987	5 0.70 in 2020
6 61.4 in 1990	6 49.6 in 2001	6 6.97 in 1988	6 1.10 in 2001
7 61.3 in 2017	7 50.0 in 1978	7 6.54 in 2014	7 1.11 in 1981
61.3 in 1989	8 50.5 in 1970	8 6.22 in 1986	8 1.15 in 1960
9 61.0 in 1975	9 51.0 in 1988	9 6.20 in 1978	9 1.38 in 2023
10 60.6 in 1991	10 51.2 in 1961	10 5.84 in 1980	10 1.51 in 1989
...
28 55.6 in 2024	36 55.6 in 2024	32 3.39 in 2024	37 3.39 in 2024

Normal Temperature for January at CHIF1 = 55.3°
 Normal Rainfall for January at CHIF1 = 3.61 inches

INVERNESS 3 SE (Records began in July 1948):

Warmest Januarys	Coolest Januarys	Wettest Januarys	Driest Januarys
1 70.3 in 1974	1 48.4 in 2003	1 9.56 in 1994	1 0.00 in 1950
2 68.1 in 1950	2 48.5 in 1981	2 6.47 in 1963	2 0.10 in 2005
3 64.8 in 1949	3 49.6 in 1977	3 6.38 in 1958	3 0.26 in 1974
4 64.6 in 1957	4 50.0 in 2010	4 6.26 in 1988	4 0.29 in 2020
5 63.4 in 1993	5 50.7 in 2001	5 6.06 in 1979	5 0.30 in 2013
6 63.3 in 1967	6 51.6 in 1958	6 5.96 in 1964	6 0.35 in 1951
7 63.1 in 1989	7 51.9 in 1978	7 5.78 in 1980	7 0.64 in 1952
8 62.6 in 1975	8 52.4 in 2014	8 5.60 in 1978	8 0.67 in 1957
9 62.4 in 1952	9 52.8 in 2018	9 5.53 in 1986	9 0.72 in 1949
10 62.0 in 2017	10 53.1 in 1988	10 5.44 in 1998	10 0.75 in 2012
...
28 58.0 in 2024	36 58.0 in 2024	26 3.66 in 2024	50 3.66 in 2024
58.0 in 1955	58.0 in 1955		

Normal Temperature for January at INVF1 = 56.0°
 Normal Rainfall for January at INVF1 = 2.97 inches

BROOKSVILLE AREA (Records began in January 1892):

Warmest Januarys		Coolest Januarys		Wettest Januarys		Driest Januarys	
1	71.2 in 1974	1	49.8 in 2003	1	9.15 in 1912	1	Trace in 1950
2	71.0 in 1937	2	50.0 in 2010	2	7.85 in 1994	2	0.13 in 1927
3	69.4 in 1950	3	51.4 in 1940	3	7.68 in 1964	3	0.16 in 2003
4	68.9 in 1947	4	51.5 in 2001	4	7.14 in 1959	4	0.31 in 1907
5	68.0 in 1913	5	51.7 in 1981	5	7.04 in 1906	5	0.35 in 1902
6	66.7 in 1972	6	51.9 in 1977	6	6.66 in 1988	6	0.39 in 1943
7	66.6 in 1989	7	52.0 in 1893	7	6.19 in 1914	7	0.44 in 2013
8	66.5 in 1949	8	52.5 in 1958	8	6.03 in 1899	8	0.48 in 1951
9	66.0 in 1917	9	52.9 in 1902	9	5.74 in 1936	9	0.53 in 1928
10	65.6 in 1932	10	53.7 in 2014	10	5.67 in 1958	10	0.59 in 1937
	65.6 in 1907			
...		...		68	2.33 in 2024	65	2.33 in 2024
60	59.2 in 2024	58	59.2 in 2024				

Normal Temperature for January at BKV = 57.5°
 Normal Rainfall for January at BKV = 3.01 inches

ST LEO (Records began in April 1895):

Warmest Januarys		Coolest Januarys		Wettest Januarys		Driest Januarys	
1	71.9 in 1937	1	51.1 in 1940	1	8.71 in 1899	1	0.00 in 1950
2	69.2 in 1947	2	51.7 in 1977	2	7.61 in 1914	2	0.18 in 1937
3	68.7 in 1950	3	52.7 in 1981	3	7.55 in 1912	3	0.19 in 2021
4	67.8 in 1913	4	53.4 in 1958	4	7.37 in 1903	4	0.25 in 1927
5	67.5 in 1972	5	53.6 in 1928	5	7.15 in 1941	5	0.34 in 1907
6	66.9 in 1949	6	54.0 in 2010	6	6.32 in 1948	6	0.48 in 1898
7	66.6 in 1989		54.0 in 1931	7	6.15 in 1904	7	0.51 in 1943
8	66.5 in 1990	8	54.6 in 1970	8	6.13 in 1982		0.51 in 1905
	66.5 in 1916		54.6 in 1905	9	6.10 in 1906	9	0.52 in 2006
10	66.4 in 1932	10	54.9 in 1918	10	6.07 in 2016		0.52 in 1951
...		
61	60.1 in 2024	64	60.1 in 2024	70	2.14 in 2024	58	2.14 in 2024
	60.1 in 1938		60.1 in 1938				
	60.1 in 1906		60.1 in 1906				

Normal Temperature for January at STLF1 = 59.7°
 Normal Rainfall for January at STLF1 = 3.06 inches

TARPON SPRINGS (Records began in January 1892):

Warmest Januarys		Coolest Januarys		Wettest Januarys		Driest Januarys	
1	71.4 in 1937	1	49.9 in 1981	1	8.23 in 2011	1	0.00 in 1950
2	70.0 in 1950	2	51.2 in 1940	2	8.16 in 1948	2	0.07 in 1974
3	69.5 in 1947	3	52.5 in 1893	3	7.96 in 1986	3	0.18 in 1898
4	67.9 in 1932	4	52.8 in 1977	4	6.43 in 1936	4	0.22 in 1927
5	67.6 in 1993	5	53.0 in 2010	5	6.17 in 1958	5	0.30 in 1907
6	67.5 in 1913		53.0 in 1958	6	6.15 in 1964	6	0.32 in 1943
7	66.7 in 1989	7	53.3 in 1956	7	5.91 in 1912	7	0.34 in 1905
8	66.6 in 1991	8	53.6 in 1905	8	5.88 in 1994	8	0.36 in 1917
9	66.4 in 1972	9	54.6 in 1896	9	5.87 in 1979	9	0.48 in 1932
	66.4 in 1916	10	54.8 in 2001	10	5.82 in 1941	10	0.51 in 1916
				
				69	2.33 in 2024	64	2.33 in 2024

Average Temperature for January 2024 = Few Days Unrepresentative
 Normal Temperature for January at TRPF1 = 60.0°
 Normal Rainfall for January at TRPF1 = 3.03 inches

TAMPA AREA (Records began in April 1890):

Warmest Januarys		Coolest Januarys		Wettest Januarys		Driest Januarys	
1	72.4 in 1937	1	50.3 in 1981	1	8.02 in 1948	1	Trace in 1950
2	71.1 in 1974	2	51.2 in 1977	2	6.73 in 1904	2	0.08 in 1927
3	69.5 in 1950	3	51.9 in 1940	3	6.45 in 1899	3	0.11 in 2003
4	69.1 in 1947	4	53.3 in 1958	4	6.33 in 1903	4	0.17 in 1974
5	68.1 in 1913	5	54.0 in 1970	5	6.28 in 2011	5	0.18 in 1949
6	67.6 in 1932	6	54.7 in 2010	6	6.18 in 2016	6	0.26 in 1932
7	67.2 in 1949	7	54.8 in 2003	7	6.17 in 1912	7	0.28 in 1902
8	67.1 in 2013	8	55.0 in 1978	8	5.72 in 1979	8	0.29 in 1916
	67.1 in 1989	9	55.1 in 1893	9	5.42 in 1996	9	0.35 in 1943
	67.1 in 1916	10	55.2 in 2001	10	5.41 in 1958	10	0.39 in 1935
				
57	61.7 in 2024	77	61.7 in 2024	41	3.12 in 2024	94	3.12 in 2024
	61.7 in 2021		61.7 in 2021				

Normal Temperature for January at TPA = 62.0°
 Normal Rainfall for January at TPA = 2.65 inches

ST PETERSBURG AREA (Records began in August 1914):

Warmest Januarys		Coolest Januarys		Wettest Januarys		Driest Januarys	
1	73.3 in 1937	1	53.3 in 1940	1	10.39 in 1948	1	Trace in 1950
2	71.8 in 1974	2	53.9 in 1981	2	7.45 in 1964	2	0.08 in 1956
3	70.8 in 1947	3	54.7 in 1977	3	7.13 in 2016	3	0.12 in 2003
4	70.4 in 1950	4	55.3 in 2010	4	6.71 in 1915	4	0.13 in 1927
5	69.8 in 1932	5	56.2 in 2003	5	6.37 in 1996	5	0.16 in 1976
6	69.5 in 1972	6	56.9 in 2001	6	6.30 in 1925	6	0.27 in 1916
7	68.4 in 2013	7	57.2 in 1970	7	6.20 in 1991	7	0.42 in 2021
	68.4 in 1916		57.2 in 1918	8	5.91 in 1973		0.42 in 1952
9	68.2 in 1989	9	57.6 in 1956	9	5.45 in 1979	9	0.43 in 1968
10	67.7 in 1993	10	58.0 in 1978	10	5.26 in 1958	10	0.44 in 1974
...				
65	61.4 in 2024	39	61.4 in 2024	20	4.11 in 2024		

Normal Temperature for January at SPG = 62.2°
 Normal Rainfall for January at SPG = 2.52 inches

PLANT CITY (Records began in September 1892):

Warmest Januarys		Coolest Januarys		Wettest Januarys		Driest Januarys	
1	71.2 in 1974	1	50.8 in 1981	1	9.03 in 1948	1	0.00 in 1950
	71.2 in 1937	2	52.1 in 1940	2	6.88 in 2016	2	Trace in 1905
3	69.9 in 1947	3	53.1 in 1977	3	6.70 in 1912	3	0.07 in 1927
4	68.8 in 1972	4	54.5 in 1905	4	6.39 in 1964	4	0.21 in 1949
5	68.4 in 1950		54.5 in 1893	5	6.33 in 1973	5	0.25 in 1937
6	68.2 in 1913	6	54.7 in 1958	6	6.12 in 1993	6	0.27 in 1923
7	66.9 in 2013	7	54.9 in 2003	7	5.98 in 1959	7	0.28 in 1907
	66.9 in 1993		54.9 in 1931	8	5.97 in 1979	8	0.29 in 1902
	66.9 in 1975	9	55.2 in 2010	9	5.94 in 1996	9	0.32 in 1976
10	66.7 in 1991	10	55.7 in 2001	10	5.86 in 1926	10	0.36 in 1968
	66.7 in 1989			
	66.7 in 1949			46	2.80 in 2024	81	2.80 in 2024
...		...					
34	62.5 in 2024	84	62.5 in 2024				
	62.5 in 1973		62.5 in 1973				

Normal Temperature for January at PLCF1 = 62.4°
 Normal Rainfall for January at PLCF1 = 3.00 inches

LAKELAND AREA (Records began in January 1915):

Warmest Januarys		Coolest Januarys		Wettest Januarys		Driest Januarys	
1	71.6 in 1937	1	51.9 in 1977	1	8.74 in 1948	1	0.04 in 1927
2	71.0 in 1974	2	52.8 in 1940	2	8.66 in 1993	2	0.12 in 1950
3	69.2 in 1947	3	53.1 in 1981	3	7.21 in 1979	3	0.20 in 1949
4	68.9 in 1950	4	53.4 in 1958	4	6.77 in 2016	4	0.26 in 1971
5	68.4 in 1932	5	54.3 in 1970	5	5.98 in 1915	5	0.27 in 1951
6	67.7 in 1989	6	55.3 in 1978	6	5.91 in 1925	6	0.29 in 1968
7	67.6 in 1916	7	55.6 in 2010	7	5.78 in 2011	7	0.40 in 1990
8	67.5 in 1993	8	56.3 in 2003	8	5.71 in 1964	8	0.41 in 2013
	67.5 in 1917	9	56.4 in 1956	9	5.60 in 1966	9	0.44 in 2021
10	67.3 in 2013	10	56.6 in 2001	10	5.56 in 1996	10	0.46 in 1922
	67.3 in 1972			
...		...		33	3.02 in 2024	78	3.02 in 2024
33	63.1 in 2024	75	63.1 in 2024				
	63.1 in 1967		63.1 in 1967				
	63.1 in 1939		63.1 in 1939				

Normal Temperature for January at LLDF1 = 62.2°
Normal Rainfall for January at LLDF1 = 2.99 inches

WINTER HAVEN AREA (Records began in March 1941):

Warmest Januarys		Coolest Januarys		Wettest Januarys		Driest Januarys	
1	71.7 in 1974	1	51.9 in 1981	1	7.46 in 1948	1	0.02 in 1950
2	71.4 in 1989	2	53.2 in 1977	2	6.57 in 1979	2	0.14 in 1949
3	71.3 in 1947	3	54.9 in 1958	3	5.91 in 1966	3	0.19 in 2013
4	69.6 in 1950	4	55.0 in 2003	4	5.88 in 2016	4	0.20 in 1951
5	68.9 in 1991	5	55.6 in 2010	5	5.78 in 1996	5	0.24 in 1971
6	68.3 in 1972	6	56.9 in 2001	6	5.62 in 1993	6	0.29 in 2021
7	67.6 in 1993	7	57.1 in 1970		5.62 in 1964	7	0.40 in 1968
8	67.5 in 1949	8	57.2 in 1976	8	5.39 in 1973	8	0.42 in 1981
9	67.2 in 1990	9	57.5 in 1985	9	5.30 in 1958	9	0.48 in 1952
10	66.7 in 2013	10	57.7 in 1978	10	5.22 in 2004	10	0.58 in 2020
	66.7 in 1975			
...		...		26	2.86 in 2024	58	2.86 in 2024
38	61.5 in 2024	35	61.5 in 2024				
	61.5 in 2021		61.5 in 2021				
	61.5 in 2019		61.5 in 2019				
	61.5 in 1951		61.5 in 1951				

Normal Temperature for January at GIF = 62.2°
Normal Rainfall for January at GIF = 2.49 inches

BARTOW (Records began in June 1892):

Warmest Januarys		Coolest Januarys		Wettest Januarys		Driest Januarys	
1	71.2 in 1974	1	52.6 in 1981	1	7.79 in 1948	1	0.03 in 1950
2	70.7 in 1937	2	54.0 in 1977	2	7.18 in 1926	2	0.10 in 1927
3	68.3 in 1950	3	54.9 in 1958	3	6.99 in 2016	3	0.16 in 1949
4	68.0 in 1991		54.9 in 1956	4	6.98 in 1915	4	0.19 in 1990
5	67.9 in 1989	5	55.5 in 2010	5	6.65 in 1958	5	0.23 in 1902
6	67.7 in 1972	6	55.8 in 2003	6	6.64 in 1903	6	0.25 in 1974
7	67.6 in 1947	7	56.0 in 1905	7	6.60 in 1936	7	0.31 in 1968
8	67.2 in 1913		56.0 in 1896	8	6.17 in 1912	8	0.33 in 1951
9	67.0 in 1993	9	56.4 in 1910	9	6.13 in 1973	9	0.34 in 1971
	67.0 in 1975	10	56.6 in 1970	10	6.02 in 1966	10	0.35 in 2021
...				
46	61.0 in 2024	47	61.0 in 2024	24	3.98 in 2024		
	61.0 in 1953		61.0 in 1953				

Normal Temperature for January at BARF1 = 61.2°

Normal Rainfall for January at BARF1 = 2.66 inches

SARASOTA-BRADENTON AREA (Records began in January 1911):

Warmest Januarys		Coolest Januarys		Wettest Januarys		Driest Januarys	
1	72.0 in 1937	1	50.7 in 1981	1	10.26 in 1998	1	0.00 in 1950
2	71.1 in 1974	2	52.3 in 1977	2	9.03 in 1993	2	0.02 in 1927
3	70.5 in 1950	3	53.5 in 1940	3	7.84 in 1948	3	0.03 in 1974
4	67.9 in 1993	4	54.8 in 2003	4	7.52 in 1958	4	0.15 in 1947
5	67.7 in 1990	5	55.2 in 1978	5	6.24 in 2006	5	0.20 in 2013
6	67.6 in 1989	6	55.4 in 2010	6	5.92 in 1979		0.20 in 1937
7	67.5 in 1916	7	55.8 in 1958	7	5.38 in 1912	7	0.22 in 1956
8	67.1 in 1991	8	56.4 in 2001	8	5.24 in 1936	8	0.28 in 2003
	67.1 in 1932	9	56.6 in 1928	9	5.15 in 1966	9	0.29 in 1990
10	67.0 in 2013	10	56.7 in 1985	10	4.88 in 1915	10	0.34 in 2001
...		...		11	4.83 in 1934		0.34 in 1933
31	63.0 in 2024	72	63.0 in 2024	12	4.82 in 1925		
	63.0 in 2021		63.0 in 2021	13	4.46 in 1926		
	63.0 in 1973		63.0 in 1973	14	4.41 in 2016		
	63.0 in 1971		63.0 in 1971		4.41 in 1973		
	63.0 in 1946		63.0 in 1946	16	4.31 in 2024		

Normal Temperature for January at SRQ = 62.4°

Normal Rainfall for January at SRQ = 2.79 inches

VENICE (Records began in April 1955):

Warmest Januarys	Coolest Januarys	Wettest Januarys	Driest Januarys
1 69.9 in 1989	1 50.8 in 1981	1 9.32 in 1958	1 0.10 in 1968
2 69.8 in 1974	2 53.5 in 1977	2 7.34 in 2016	2 0.15 in 2003
3 69.2 in 1972	3 56.0 in 1958	3 7.00 in 1973	3 0.24 in 1974
4 69.1 in 2013	4 56.3 in 2003	4 6.62 in 1966	4 0.27 in 1990
5 65.7 in 1999	5 56.4 in 1985	5 6.39 in 1993	5 0.36 in 2012
6 65.3 in 2017	6 56.6 in 1978	6 6.28 in 1979	6 0.37 in 2001
7 65.2 in 2020	56.6 in 1976	7 5.89 in 1999	7 0.41 in 2021
8 65.1 in 1975	8 57.1 in 2001	8 5.00 in 2024	8 0.43 in 1975
65.1 in 1967	9 57.7 in 1970	9 4.78 in 1991	9 0.46 in 1971
10 64.9 in 2023	57.7 in 1956	10 4.54 in 1994	10 0.49 in 2013
64.9 in 1998			
...	...		
21 63.0 in 2024	42 63.0 in 2024		
63.0 in 1968	63.0 in 1968		

Normal Temperature for January at VNCF1 = 62.0°
Normal Rainfall for January at VNCF1 = 2.68 inches

MYAKKA RIVER STATE PARK (Temperature records began in March 1956
and Rainfall records began in Sep 1943):

Warmest Januarys	Coolest Januarys	Wettest Januarys	Driest Januarys
1 69.5 in 1974	1 52.1 in 1981	1 9.30 in 1993	1 0.00 in 1974
2 69.2 in 1993	2 53.5 in 1970	2 8.25 in 1973	0.00 in 1950
3 67.7 in 1972	3 54.5 in 1977	3 7.38 in 1979	3 0.08 in 2003
4 67.4 in 2013	4 54.9 in 2003	4 6.84 in 2016	4 0.09 in 1968
67.4 in 1991	5 55.0 in 1958	5 6.82 in 1958	5 0.17 in 1990
6 67.3 in 1989	6 56.1 in 2001	6 5.64 in 1999	6 0.21 in 2001
67.3 in 1975	7 57.3 in 1961	7 5.53 in 1987	7 0.27 in 2021
8 67.0 in 1990	8 57.4 in 1963	8 5.42 in 1991	8 0.31 in 2006
9 66.6 in 2017	9 57.8 in 1985	9 5.13 in 1966	9 0.32 in 1951
10 66.3 in 2007	57.8 in 1978	10 5.03 in 1998	10 0.54 in 1975
...	...	11 4.90 in 1978	
33 60.8 in 2024	25 60.8 in 2024	12 4.53 in 2024	
60.8 in 2014	60.8 in 2014		

Normal Temperature for January at MKCF1 = 62.2°
Normal Rainfall for January at MKCF1 = 2.85 inches

WAUCHULA 2 N (Records began in January 1933):

Warmest Januarys		Coolest Januarys		Wettest Januarys		Driest Januarys	
1	73.1 in 1937	1	47.4 in 2010	1	7.84 in 1979	1	0.00 in 2001
2	71.4 in 1974	2	52.5 in 1981	2	7.26 in 1973		0.00 in 2000
3	69.9 in 1947	3	53.1 in 2001	3	7.20 in 1958	3	0.03 in 1974
4	69.0 in 1972	4	54.3 in 1940	4	6.89 in 2016	4	0.08 in 1950
5	68.1 in 1991	5	54.7 in 1977	5	6.49 in 1966	5	0.14 in 1990
6	67.9 in 1989	6	56.1 in 1956	6	6.09 in 1998	6	0.26 in 1949
7	67.8 in 1990	7	56.7 in 2014	7	5.93 in 1993	7	0.27 in 1935
8	67.7 in 1950	8	57.0 in 1970	8	4.53 in 1936	8	0.29 in 2013
9	67.5 in 1975	9	57.1 in 2011	9	4.29 in 1983	9	0.30 in 1992
10	67.0 in 1993		57.1 in 1978	10	4.19 in 1948	10	0.33 in 2006
...		
52	60.8 in 2024	34	60.8 in 2024	33	2.44 in 2024	59	2.44 in 2024

Normal Temperature for January at WAUF1 = 60.2°
 Normal Rainfall for January at WAUF1 = 2.29 inches

ARCHBOLD BIO STN (Records began in January 1969):

Warmest Januarys		Coolest Januarys		Wettest Januarys		Driest Januarys	
1	69.7 in 1974	1	50.8 in 1981	1	9.64 in 2016	1	0.08 in 1976
2	67.5 in 1993	2	53.7 in 1977	2	7.91 in 1979	2	0.13 in 1975
3	67.4 in 1975	3	53.8 in 2001	3	5.65 in 1998	3	0.14 in 2021
	67.4 in 1972	4	54.5 in 2010	4	5.17 in 1991	4	0.22 in 2007
5	66.9 in 1991	5	54.8 in 2003	5	5.12 in 1993	5	0.25 in 1972
6	66.6 in 1990	6	56.3 in 1970	6	5.11 in 1973	6	0.26 in 2001
7	65.9 in 2013	7	57.1 in 1978	7	4.78 in 1970	7	0.29 in 2012
8	65.7 in 1989	8	58.0 in 1995	8	4.41 in 1983	8	0.31 in 2006
9	64.5 in 2017		58.0 in 1987	9	3.90 in 2019	9	0.33 in 1974
10	64.4 in 2007	10	58.5 in 2009	10	3.82 in 1994	10	0.36 in 1992
			58.5 in 1983	11	3.72 in 1980		0.36 in 1981
			58.5 in 1979	12	3.10 in 1987		
...		...		13	2.95 in 2014		
20	61.9 in 2024	36	61.9 in 2024	14	2.89 in 1995		
				15	2.65 in 2011		
				16	2.64 in 2024		

Normal Temperature for January at ACHF1 = 61.4°
 Normal Rainfall for January at ACHF1 = 2.18 inches

PUNTA GORDA AREA (Records began in May 1914):

Warmest Januarys		Coolest Januarys		Wettest Januarys		Driest Januarys	
1	71.7 in 1950	1	54.4 in 1981	1	9.93 in 2016	1	0.00 in 1950
2	71.3 in 1937	2	55.3 in 1977	2	7.07 in 1979		0.00 in 1949
3	71.1 in 1974	3	55.8 in 2003	3	6.95 in 1958	3	0.08 in 1990
4	70.8 in 1947	4	56.4 in 2001	4	6.29 in 1973	4	0.10 in 1974
5	70.4 in 1949		56.4 in 1940	5	5.89 in 1926		0.10 in 1951
6	69.8 in 1993	6	56.6 in 2010	6	5.84 in 1991	6	0.11 in 1968
7	69.1 in 1972	7	57.3 in 1978	7	5.51 in 1948	7	0.21 in 1927
8	68.6 in 1991	8	57.5 in 1976	8	5.18 in 1966	8	0.27 in 2001
9	68.5 in 1989	9	57.6 in 1970	9	4.95 in 1931		0.27 in 1928
	68.5 in 1932	10	58.4 in 1958	10	4.86 in 1970	10	0.29 in 2021
	68.5 in 1916			11	4.62 in 1915		
...		...		12	4.34 in 1993		
35	64.7 in 2024	66	64.7 in 2024	13	4.32 in 1924		
	64.7 in 2017		64.7 in 2017	14	4.03 in 1961		
	64.7 in 1960		64.7 in 1960	15	4.00 in 2024		

Normal Temperature for January at PGD = 62.9°
 Normal Rainfall for January at PGD = 2.32 inches

FORT MYERS AREA (Records began in January 1902):

Warmest Januarys		Coolest Januarys		Wettest Januarys		Driest Januarys	
1	73.4 in 1937	1	55.7 in 1981	1	12.98 in 2016	1	0.00 in 1950
2	73.0 in 1974	2	55.9 in 1977	2	7.95 in 1991	2	Trace in 2001
3	70.9 in 1972	3	57.1 in 1958	3	7.45 in 1979	3	0.01 in 1949
4	70.8 in 1947	4	57.3 in 1940	4	6.04 in 1958		0.01 in 1917
5	70.3 in 1991	5	57.6 in 2003	5	5.36 in 1993	5	0.05 in 1916
6	70.0 in 1993	6	57.8 in 1902	6	5.10 in 2019	6	0.15 in 2012
	70.0 in 1950	7	58.0 in 1970	7	4.86 in 2024		0.15 in 1984
	70.0 in 1913	8	58.4 in 1905	8	4.76 in 1903	8	0.21 in 1976
9	69.9 in 2013	9	58.7 in 2001	9	4.50 in 1983	9	0.22 in 1920
	69.9 in 1989		58.7 in 1956	10	4.36 in 1970	10	0.23 in 1928
...		...					
44	65.5 in 2024	79	65.5 in 2024				
	65.5 in 1936		65.5 in 1936				

Normal Temperature for January at FMY = 64.7°
 Normal Rainfall for January at FMY = 2.43 inches

For more Climate information visit our web site at the following link:
<https://www.weather.gov/tampabay> and then go to the Climate and Past Weather drop down menu above the graphical forecast images.