



NOAA - National Weather Service

Tampa Bay Area

2525 14th Avenue SE, Ruskin, Florida 33570

813-645-2323 <https://weather.gov/tampabay>

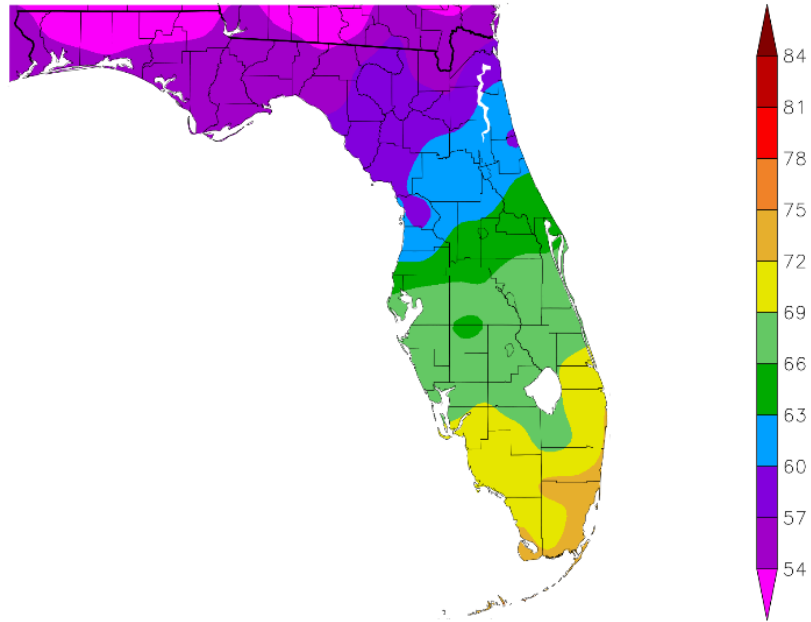
December and 2025 Weather Summary for West Central and Southwest Florida

In December 2025 we saw a few cold fronts move across the region bringing some cooler temperatures for a couple of days behind them, especially the one near the end of the month, but overall we had many more days of above normal temperatures during the month. Temperatures this December averaged about 1 to 4 degrees above normal, but thanks to the cool down the last couple of days of the month, none of the official NWS locations ended up in the Top Ten Warmest for December.

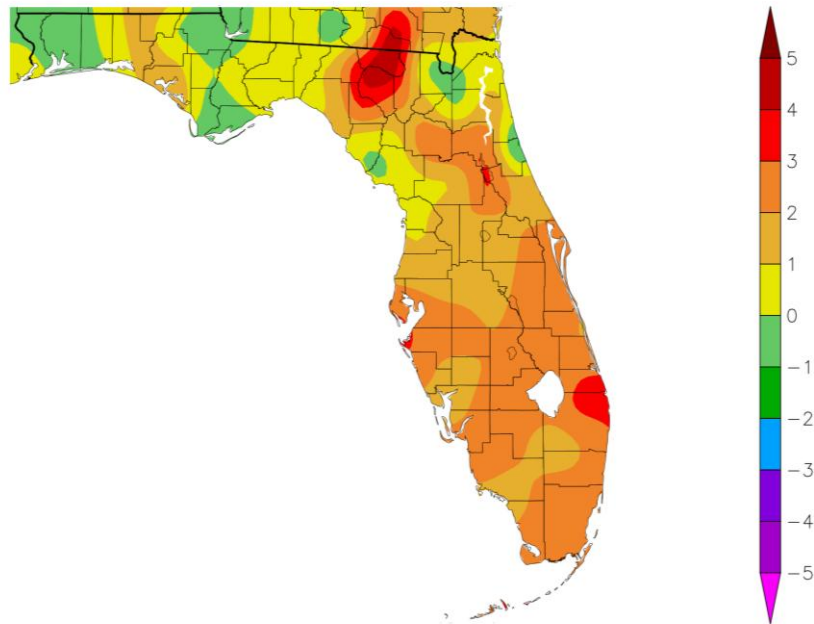
DECEMBER TEMPERATURE (°F) :

Location	December 2025 Rank	Avg Temp	Normal Dec Temp	Dep fm Normal	Records Began
Fort Myers Area	15th Warmest (tie)	69.6°	67.3°	+2.3°	Jan 1902
St Petersburg Area	11th Warmest (tie)	69.0°	65.1°	+3.9°	Aug 1914
Sarasota-Bradenton Area	11th Warmest (tie)	68.1°	65.2°	+2.9°	Jan 1911
Plant City	11th Warmest	67.1°	65.0°	+2.1°	Sep 1892
Venice	17th Warmest (tie)	67.1°	64.9°	+2.2°	May 1955
Punta Gorda Area	36th Warmest (tie)	67.1°	65.8°	+1.3°	May 1914
Tampa Area	20th Warmest (tie)	66.6°	64.9°	+1.7°	Apr 1890
Lakeland Area	19th Warmest	66.5°	64.8°	+1.7°	Jan 1915
Winter Haven Area	24th Warmest	66.1°	64.6°	+1.5°	Mar 1941
Bartow	24th Warmest (tie)	65.5°	63.6°	+1.9°	Jun 1892
Myakka River State Pk	22nd Warmest	65.2°	64.8°	+0.4°	Mar 1956
Wauchula	33rd Warmest (tie)	64.7°	63.0°	+1.7°	Jan 1933
Tarpon Springs	47th Warmest	63.5°	62.4°	+1.1°	Jan 1892
St. Leo	41st Warmest (tie)	63.4°	62.1°	+1.3°	Apr 1895
Brooksville Area	54th Warmest	61.5°	60.3°	+1.2°	Jan 1892
Chiefland 5 ESE	23rd Warmest	58.4°	57.4°	+1.0°	Jul 1956

Temperature (F)
12/1/2025 – 12/31/2025



Departure from Normal Temperature (F)
12/1/2025 – 12/31/2025



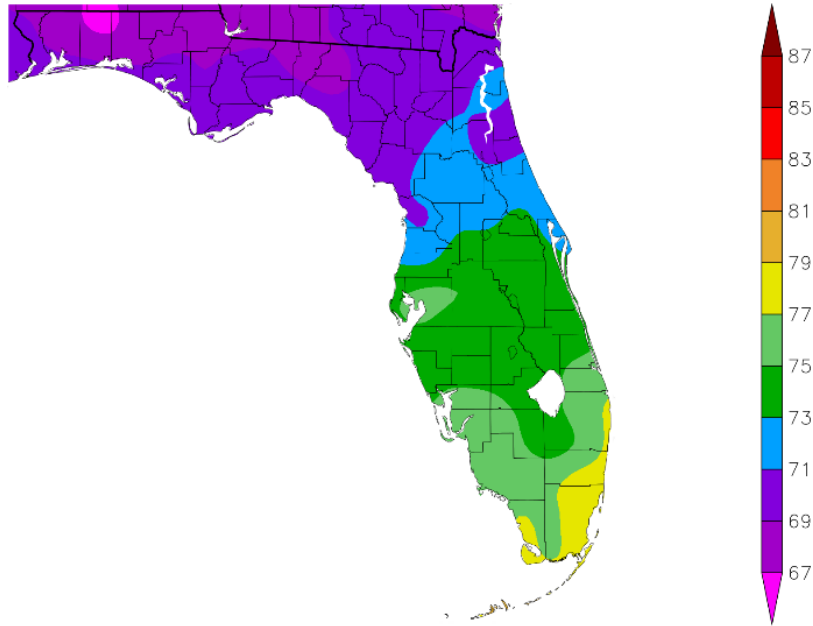
Graphics Source: High Plains Regional Climate Center (HPRCC)

As for 2025, it was a rather warm year with temperatures averaging near normal to 1.5 degrees above normal which placed a few of the official NWS sites in the Top Ten Warmest Year since records began.

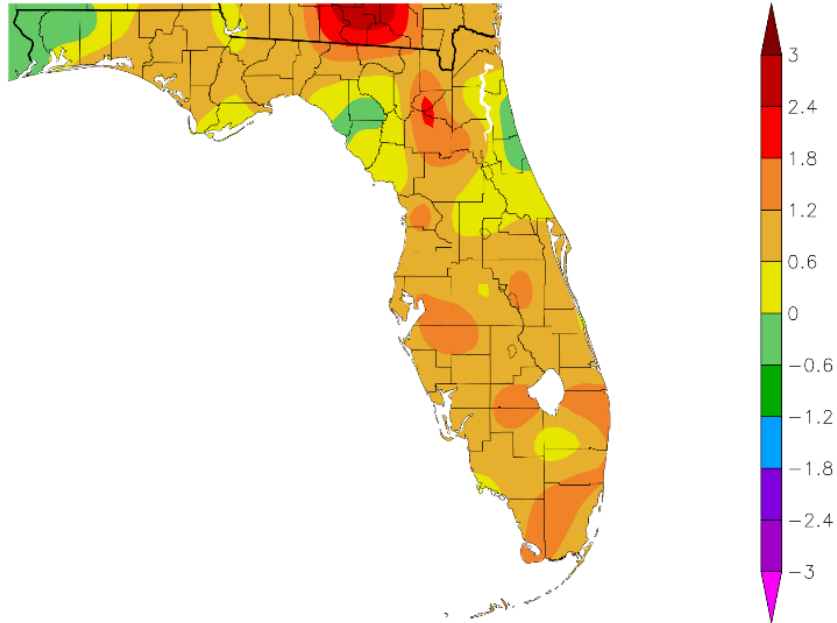
2025 YEARLY AVERAGE TEMPERATURE (°F):

Location	2025 Rank	Avg Temp	Normal Ann Temp	Dep fm Normal	Records Began
Fort Myers Area	10th Warmest	76.5°	75.4°	+1.1°	Jan 1902
Tampa Area	8th Warmest	75.7°	74.5°	+1.2°	Apr 1890
Plant City	7th Warmest	75.5°	74.3°	+1.2°	Sep 1892
St Petersburg Area	18th Warmest (tie)	75.2°	74.7°	+0.5°	Aug 1914
Lakeland Area	10th Warmest	75.1°	73.9°	+1.2°	Jan 1915
Punta Gorda Area	19th Warmest (tie)	75.1°	74.3°	+0.8°	May 1914
Winter Haven Area	11th Warmest (tie)	75.0°	74.6°	+0.4°	Mar 1941
Sarasota-Bradenton Area	7th Warmest (tie)	74.8°	74.1°	+0.7°	Jan 1911
Venice	13th Warmest	74.6°	73.7°	+0.9°	May 1955
Bartow	13th Warmest (tie)	73.8°	73.1°	+0.7°	Jun 1892
Tarpon Springs	20th Warmest (tie)	73.5°	72.9°	+0.6°	Jan 1892
Wauchula	20th Warmest (tie)	73.4°	72.4°	+1.0°	Jan 1933
Myakka River State Pk	16th Coolest (tie)	73.3°	73.6°	-0.3°	Mar 1956
St. Leo	29th Warmest (tie)	72.9°	71.9°	+1.0°	Apr 1895
Brooksville Area	30th Warmest (tie)	71.7°	70.7°	+1.0°	Jan 1892
Chiefland 5 ESE	23rd Warmest	69.4°	69.2°	+0.2°	Jul 1956

Temperature (F)
1/1/2025 – 12/31/2025



Departure from Normal Temperature (F)
1/1/2025 – 12/31/2025

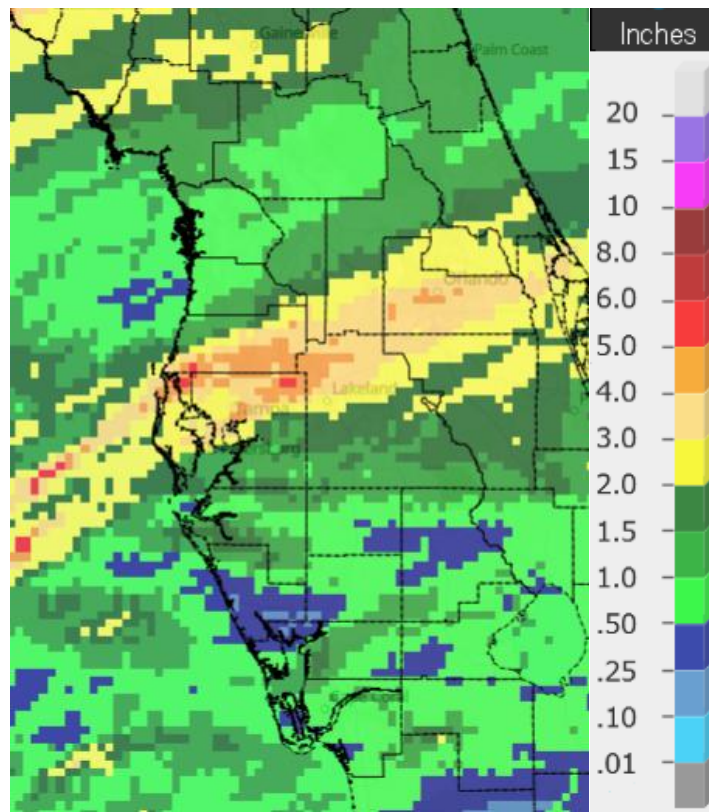


Graphics Source: High Plains Regional Climate Center (HPRCC)

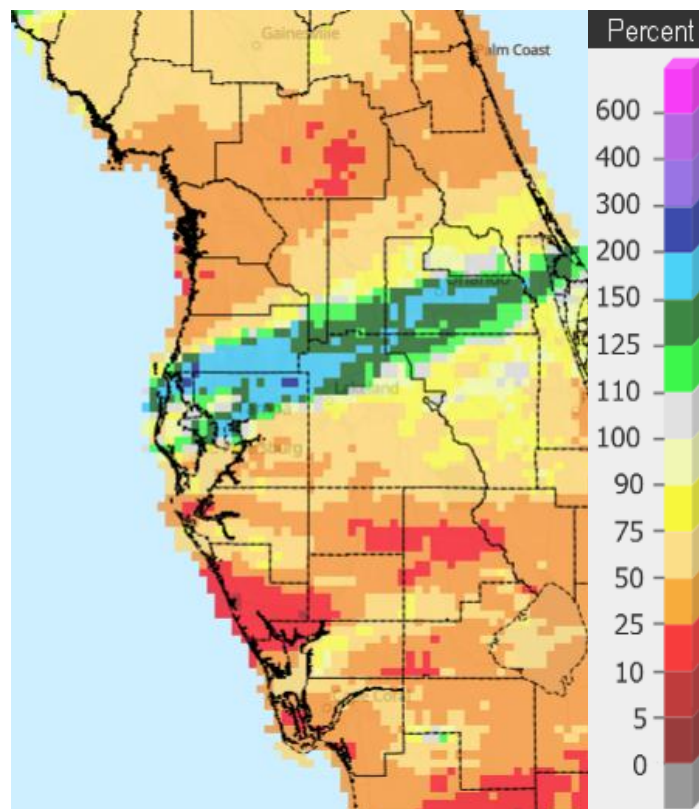
Taking a look at rainfall, December was rather dry with much of the area seeing less than 50 percent of normal (orange/red areas on bottom map on the next page) for the month. However, there was a stripe along and north of I-4 that saw heavy rainfall on the December 7th with this area ending up above normal (blue/green areas on bottom map on next page).

DECEMBER RAINFALL (inches):

Location	December 2025		Normal Dec Rain	Dep fm Normal	Records Began
	Rank	Rain Total			
St. Leo	15th Wettest	4.86	2.53	+2.33	Apr 1895
Tarpon Springs	41st Wettest	3.30	2.56	+0.74	Jan 1892
Tampa Area	33rd Wettest	2.88	2.56	+0.32	Apr 1890
Plant City	84th Driest(tie)	2.52	2.54	-0.02	Sep 1892
Chiefland 5 ESE	32nd Driest(tie)	2.12	3.25	-1.13	Jul 1956
Lakeland Area	63rd Driest(tie)	2.01	2.61	-0.60	Jan 1915
Sarasota-Bradenton Area	58th Driest	1.71	2.33	-0.62	Jan 1911
Bartow	64th Driest	1.56	2.16	-0.60	Jun 1892
Winter Haven Area	38th Driest(tie)	1.46	2.68	-1.22	Mar 1941
Punta Gorda Area	54th Driest	1.14	1.99	-0.85	May 1914
St. Petersburg Area	38th Driest(tie)	0.92	2.39	-1.47	Aug 1914
Wauchula	26th Driest	0.90	2.13	-1.23	Jan 1933
Brooksville Area	32nd Driest	0.90	2.56	-1.66	Jan 1892
Fort Myers Area	39th Driest	0.64	1.90	-1.26	Jan 1902
Myakka River State Pk	19th Driest	0.57	2.51	-1.94	Sep 1943
Venice	8th Driest	0.37	2.31	-1.94	May 1955



December 2025 Rainfall

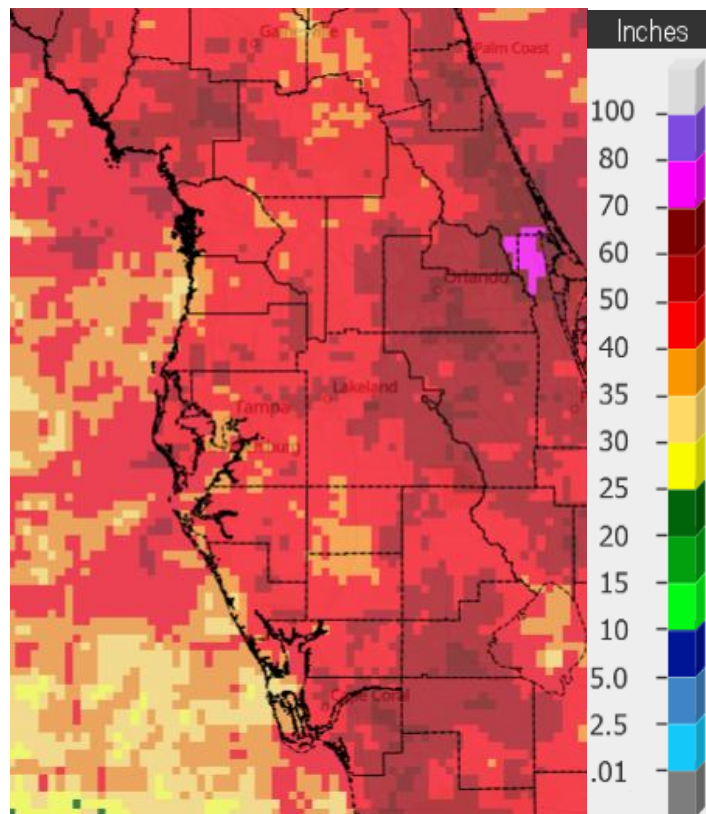


Percent of Normal

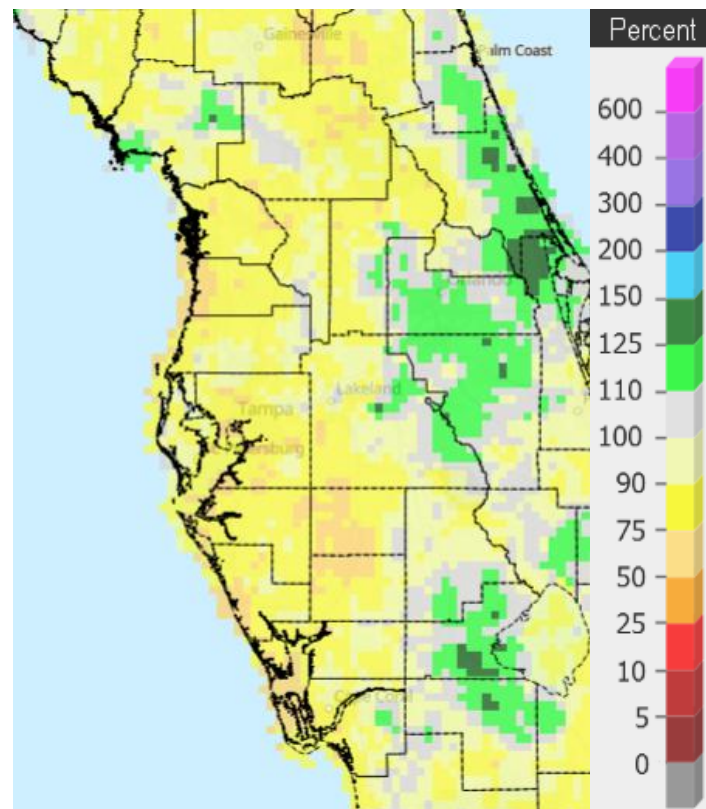
As for 2025, most of the region saw below normal rainfall (yellow/orange areas on the bottom map on the next page) with some of the official NWS sites ending up in the Top Ten Driest Year since records began. In fact, Brooksville Area reported their driest year since records began in 1892. Meanwhile, some interior areas and parts of Levy County were slightly above normal (green areas on the bottom map on next page).

2025 RAINFALL (inches):

Location	2025 Rank	2025 Rain Total	Normal Ann Rain	Dep fm Normal	Records Began
Chiefland 5 ESE	21st Driest	54.48	57.10	-2.62	Jul 1956
Myakka River State Pk	21st Driest	48.31	61.07	-12.76	Sep 1943
Plant City	30th Driest	47.60	56.11	-8.51	Sep 1892
Sarasota-Bradenton Area	29th Driest	45.94	49.05	-3.11	Jan 1911
St. Leo	12th Driest	43.78	53.46	-9.68	Apr 1895
Wauchula	9th Driest	43.04	52.00	-8.96	Jan 1933
St. Petersburg Area	30th Driest	42.55	46.65	-4.10	Aug 1914
Lakeland Area	18th Driest	41.97	56.82	-14.85	Jan 1915
Bartow	9th Driest	41.66	50.88	-9.22	Jun 1892
Tampa Area	30th Driest	40.86	49.48	-8.62	Apr 1890
Punta Gorda Area	10th Driest	38.84	52.97	-14.13	May 1914
Tarpon Springs	7th Driest	38.50	54.29	-15.79	Jan 1892
Fort Myers Area	6th Driest	38.23	57.41	-19.18	Jan 1902
Venice	4th Driest	33.83	51.27	-17.44	May 1955
Brooksville Area	1st Driest	33.21	51.94	-18.73	Jan 1892
Winter Haven Area	3rd Driest	31.98	46.12	-14.14	Mar 1941



2025 Rainfall



Percent of Normal

On the following pages are tables of the Top Ten Warmest, Coolest, Wettest, and Driest Decembers and Years at some official NWS locations, which include the average/total for this December and 2025 where available, and the 1991-2020 Normal temperature and rainfall for the month of December and Year.

CHIEFLAND 5 ESE (Records began in July 1956):

Warmest Decembers	Coolest Decembers	Wettest Decembers	Driest Decembers
1 65.0 in 2021	1 47.7 in 2010	1 11.85 in 2018	1 0.00 in 1956
2 64.7 in 1971	2 48.0 in 1963	2 9.84 in 1964	2 0.04 in 2015
3 63.7 in 1998	3 50.2 in 1989	3 9.68 in 1997	3 0.42 in 2001
4 63.7 in 1984	4 51.3 in 1960	4 8.55 in 2023	0.42 in 1984
5 62.1 in 1982	5 52.2 in 2005	5 8.39 in 2005	5 0.51 in 2011
6 61.9 in 1990	6 52.3 in 2003	6 7.77 in 1996	6 0.61 in 2024
7 61.6 in 1956	7 52.5 in 1993	7 7.47 in 2019	7 0.66 in 2010
8 61.5 in 2001	8 52.9 in 1980	8 6.66 in 1967	8 0.71 in 2021
9 61.4 in 2006	9 53.0 in 1985	9 6.52 in 1983	9 0.72 in 1980
61.4 in 1991	53.0 in 1968	10 6.20 in 1969	10 0.78 in 1985
...	
23 58.4 in 2025		37 2.12 in 2025	32 2.12 in 2025
		2.12 in 1987	2.12 in 1987

Normal Temperature for December at CHIF1 = 57.4°

Normal Rainfall for December at CHIF1 = 3.25 inches

Warmest Years	Coolest Years	Wettest Years	Driest Years
1 72.0 in 1998	1 66.5 in 2010	1 99.47 in 1964	1 40.77 in 2008
2 71.8 in 2020	2 67.0 in 1969	2 77.29 in 1959	2 41.70 in 2011
3 71.6 in 1990	3 67.4 in 1963	3 76.86 in 2018	3 41.85 in 2000
4 71.5 in 2018	4 67.7 in 1966	4 74.06 in 2004	4 43.05 in 2006
5 71.3 in 2023	5 68.0 in 1976	5 70.31 in 1996	5 45.45 in 1990
6 71.1 in 1991	6 68.2 in 1958	6 69.40 in 1983	6 45.90 in 2022
7 70.8 in 1982	7 68.4 in 2000	7 68.98 in 1965	7 46.69 in 2007
8 70.7 in 2024	68.4 in 1962	8 67.91 in 1982	8 47.05 in 1999
9 70.9 in 2021	9 68.5 in 1996	9 67.59 in 1966	9 48.04 in 1977
10 70.5 in 2022	68.5 in 1977	10 67.33 in 1957	10 49.21 in 1972
...
23 69.4 in 2025	23 69.4 in 2025		21 54.48 in 2025
69.4 in 2002	69.4 in 2002		

Normal Temperature for the Year at CHIF1 = 69.2°

Normal Rainfall for the Year at CHIF1 = 57.10 inches

INVERNESS 3 SE (Records began in July 1948):

Warmest Decembers		Coolest Decembers		Wettest Decembers		Driest Decembers	
1	69.1 in 2015	1	47.7 in 2010	1	11.23 in 2018	1	0.11 in 1984
2	67.0 in 1948	2	50.1 in 1989	2	10.46 in 1997	2	0.14 in 2011
3	66.8 in 1971	3	52.4 in 2002	3	7.80 in 1953	3	0.26 in 1956
4	66.3 in 2016	4	54.1 in 2005	4	6.64 in 2002	4	0.42 in 1998
5	65.4 in 2021	5	54.3 in 1963	5	6.37 in 1973	5	0.50 in 2016
6	65.3 in 1949	6	54.4 in 1993	6	5.40 in 1969	6	0.63 in 2001
7	64.9 in 1967	7	55.0 in 1960	7	5.30 in 1977	7	0.65 in 2024
8	64.4 in 1956	8	55.4 in 2000	8	5.23 in 1972	8	0.73 in 2010
	64.4 in 1951	9	55.5 in 2003	9	5.08 in 2023	9	0.75 in 1961
10	64.3 in 2007	10	55.9 in 1997	10	5.05 in 1981	10	0.77 in 2021

Average Temperature for Dec 1-24, 2025 = 60.8°

Normal Temperature for December at INVf1 = 59.0

Total Rainfall for Dec 1-24, 2025 = 0.75 inches

Normal Rainfall for December at INVf1 = 2.48 inches

Warmest Years		Coolest Years		Wettest Years		Driest Years	
1	73.4 in 2015	1	68.8 in 1988	1	87.00 in 1960	1	35.66 in 1999
2	73.0 in 2020	2	68.9 in 2010	2	77.45 in 2021	2	36.50 in 1956
3	72.6 in 1953	3	69.0 in 1996	3	76.21 in 1953	3	37.34 in 1990
4	72.5 in 2024	4	69.3 in 1995	4	75.47 in 1982	4	38.22 in 2000
5	72.4 in 2022	5	69.4 in 2005	5	69.77 in 1959	5	40.35 in 2006
6	72.3 in 2019	6	69.6 in 1992	6	68.72 in 1964	6	42.22 in 1998
7	72.2 in 1975	7	69.7 in 1993	7	68.65 in 2018	7	43.28 in 1955
	72.2 in 1974	8	69.8 in 1981	8	65.24 in 1958	8	44.24 in 1961
	72.2 in 1959		68.8 in 1977	9	63.25 in 2002	9	44.29 in 1954
	72.2 in 1957	10	69.9 in 2001	10	62.76 in 1992	10	45.17 in 2013

Average Temperature for Jan 1-Dec 24, 2025 = 71.1°

Normal Temperature for the Year at INVf1 = 69.8°

Total Rainfall for Jan 1-Dec 24, 2025 = 35.72 inches

Normal Rainfall for the Year at INVf1 = 52.39 inches

BROOKSVILLE AREA (Records began in January 1892):

Warmest Decembers		Coolest Decembers		Wettest Decembers		Driest Decembers	
1	70.5 in 2015	1	47.9 in 2010	1	10.10 in 1997	1	0.01 in 1955
2	70.1 in 1931	2	53.9 in 1935	2	9.23 in 2018	2	0.04 in 2015
3	68.6 in 1971	3	54.3 in 2003	3	8.30 in 1930	3	0.08 in 2011
4	67.1 in 1948	4	54.4 in 1989	4	8.10 in 1953	4	0.21 in 1908
5	66.8 in 2021	5	54.7 in 2005	5	6.91 in 1925	5	0.27 in 1910
	66.8 in 1926		54.7 in 1903	6	6.40 in 1969	6	0.32 in 1946
7	66.5 in 1932	7	54.8 in 1930	7	6.38 in 1983		0.32 in 1932
8	66.4 in 1982	8	54.9 in 1963	8	5.99 in 2002	8	0.33 in 1956
9	66.3 in 1940	9	55.3 in 1985	9	5.68 in 1973	9	0.37 in 1992
10	66.2 in 1933	10	55.4 in 1910	10	5.60 in 1905		0.37 in 1990
...		...					0.37 in 1906
54	61.5 in 2025	66	61.5 in 2025			...	
	61.5 in 2012		61.5 in 2012			32	0.90 in 2025
	61.5 in 1928		61.5 in 1928				

Normal Temperature for December at BKV = 60.3°

Normal Rainfall for December at BKV = 2.56 inches

Warmest Years		Coolest Years		Wettest Years		Driest Years	
1	74.3 in 1927	1	67.9 in 2010	1	80.17 in 1959	1	33.21 in 2025
2	73.7 in 1929	2	68.7 in 1920	2	79.39 in 1912	2	35.63 in 2010
3	73.6 in 2015	3	69.4 in 2000	3	77.49 in 1960	3	36.58 in 2000
4	73.4 in 2020	4	69.5 in 2004	4	75.09 in 1945	4	37.46 in 1954
5	73.3 in 1948	5	69.6 in 2003	5	72.34 in 1982	5	37.83 in 1927
6	73.1 in 2023	6	69.7 in 2005	6	71.91 in 1928	6	38.08 in 1955
7	73.0 in 2019	7	69.9 in 1894	7	71.35 in 1964	7	38.20 in 1931
8	72.9 in 1949	8	70.0 in 2008	8	70.98 in 1995	8	39.62 in 2006
	72.9 in 1949	9	70.1 in 1999	9	70.12 in 1906	9	40.48 in 1951
10	72.8 in 2024		70.1 in 1924	10	69.70 in 1983	10	40.70 in 1977
...		...					
30	71.7 in 2025	41	71.7 in 2025				
	71.7 in 1964		71.7 in 1964				

Normal Temperature for the Year at BKV = 70.7°

Normal Rainfall for the Year at BKV = 51.94 inches

ST LEO (Records began in April 1895):

Warmest Decembers		Coolest Decembers		Wettest Decembers		Driest Decembers	
1	70.6 in 2015	1	51.4 in 2010	1	13.99 in 1997	1	0.13 in 1984
2	69.6 in 1931	2	52.1 in 1935	2	10.68 in 2002		0.13 in 1906
3	68.0 in 2021	3	53.0 in 1930	3	9.17 in 2018	3	0.14 in 2016
4	67.7 in 2007	4	54.1 in 1903	4	7.50 in 1900	4	0.17 in 1933
5	67.6 in 1948	5	54.2 in 1910	5	7.43 in 1981	5	0.18 in 1938
6	67.5 in 2001	6	55.1 in 1917	6	6.83 in 1969	6	0.22 in 2011
	67.5 in 1984	7	56.6 in 1989	7	6.47 in 1983		0.22 in 1990
8	67.3 in 2006	8	56.7 in 1909	8	6.16 in 1953	8	0.23 in 1932
9	67.2 in 1998	9	57.0 in 1960	9	5.99 in 1907		0.23 in 1908
10	66.9 in 1982	10	57.2 in 1927	10	5.67 in 1930	10	0.31 in 1928
			57.2 in 1895	11	5.54 in 1989		
...		...		12	5.37 in 1916		
41	63.4 in 2025	84	63.4 in 2025	13	5.13 in 1905		
	63.4 in 2012		63.4 in 2012	14	4.98 in 1925		
	63.4 in 1961		63.4 in 1961	15	4.86 in 2025		

Normal Temperature for December at STLf1 = 62.1°

Normal Rainfall for December at STLf1 = 2.53 inches

Warmest Years		Coolest Years		Wettest Years		Driest Years	
1	74.5 in 1998	1	69.3 in 1930	1	81.93 in 1945	1	36.61 in 1961
2	74.4 in 1990	2	69.5 in 1920	2	80.06 in 1900	2	39.27 in 2000
	74.4 in 1948	3	69.6 in 2010	3	79.57 in 1953	3	40.49 in 1932
4	74.1 in 1982		69.6 in 1910	4	75.57 in 1983	4	41.37 in 1955
5	73.9 in 2007	5	69.9 in 1931	5	75.34 in 1960	5	41.69 in 1908
6	73.8 in 2020	6	70.0 in 1928	6	72.45 in 1982	6	42.02 in 1990
7	73.7 in 2024	7	70.2 in 1903	7	71.29 in 2003	7	42.62 in 1952
	73.7 in 2006	8	70.3 in 1968	8	70.41 in 1959	8	42.98 in 1980
	73.7 in 1994		70.3 in 1940	9	69.85 in 1934	9	43.44 in 2006
	73.7 in 1949		70.3 in 1917	10	69.68 in 2002	10	43.47 in 1967
...						11	43.76 in 1999
29	72.9 in 2025					12	43.78 in 2025
	72.9 in 1995						
	72.9 in 1939						
	72.9 in 1925						

Normal Temperature for the Year at STLf1 = 71.9°

Normal Rainfall for the Year at STLf1 = 53.46 inches

TARPON SPRINGS (Records began in January 1892):

Warmest Decembers		Coolest Decembers		Wettest Decembers		Driest Decembers	
1	72.8 in 1931	1	50.9 in 2010	1	15.60 in 1997	1	0.02 in 1984
2	71.4 in 2015	2	53.1 in 1935	2	12.27 in 2002	2	0.12 in 2016
3	68.6 in 1971	3	53.3 in 1903	3	10.00 in 2018	3	0.14 in 1946
4	68.2 in 1998	4	53.6 in 1963	4	9.08 in 1983	4	0.17 in 1928
5	67.9 in 1982	5	55.0 in 1910	5	7.79 in 1969	5	0.19 in 2000
6	67.6 in 2016	6	55.6 in 1960	6	7.48 in 1973	6	0.20 in 1938
	67.6 in 2001		55.6 in 1917	7	6.95 in 1953	7	0.25 in 1906
8	67.5 in 2021	8	55.9 in 1930	8	5.75 in 1930	8	0.28 in 1908
9	67.2 in 2007	9	56.3 in 1989	9	5.47 in 1989	9	0.31 in 2011
	67.2 in 2006	10	56.5 in 2004	10	5.34 in 1907	10	0.35 in 1933
	67.2 in 1992			
...		...		41	3.30 in 2025	92	3.30 in 2025
47	63.5 in 2025	79	63.5 in 2025				

Normal Temperature for December at TRPF1 = 62.4°

Normal Rainfall for December at TRPF1 = 2.74 inches

Warmest Years		Coolest Years		Wettest Years		Driest Years	
1	74.9 in 2019	1	69.5 in 1895	1	83.20 in 1959	1	32.85 in 2007
2	74.8 in 1990	2	69.6 in 1910	2	77.78 in 1957	2	32.87 in 1956
3	74.7 in 1994	3	69.9 in 1963	3	74.81 in 1960	3	33.48 in 1927
4	74.6 in 2015	4	70.0 in 1940	4	73.83 in 1983	4	35.39 in 1952
5	74.5 in 2024	5	70.1 in 1892	5	68.67 in 2012	5	36.66 in 2003
6	74.4 in 2017	6	70.2 in 1968	6	67.64 in 1969	6	38.21 in 1967
	74.4 in 1997		70.2 in 1896	7	67.43 in 2019	7	38.50 in 2025
	74.4 in 1991	8	70.3 in 2010	8	67.00 in 1925	8	38.65 in 1907
9	74.2 in 1998		70.3 in 1969	9	66.98 in 1900	9	39.65 in 1902
10	74.1 in 1932	10	70.5 in 1958	10	66.61 in 1997	10	40.15 in 1908
...			70.5 in 1904				
20	73.5 in 2025						
	73.5 in 2007						
	73.5 in 1921						
	73.5 in 1911						

Normal Temperature for the Year at TRPF1 = 72.9°

Normal Rainfall for the Year at TRPF1 = 54.29 inches

TAMPA AREA (Records began in April 1890):

Warmest Decembers		Coolest Decembers		Wettest Decembers		Driest Decembers	
1	73.4 in 2015	1	53.2 in 2010	1	15.57 in 1997	1	0.07 in 1984
2	72.3 in 1931	2	54.5 in 1935	2	14.10 in 2002	2	0.09 in 1946
3	71.5 in 2021	3	54.9 in 1963	3	8.69 in 2018		0.09 in 1906
4	70.1 in 2016	4	55.5 in 1910	4	7.36 in 1907	4	0.13 in 1933
5	69.5 in 2006	5	55.8 in 1903	5	7.04 in 1941	5	0.19 in 2011
6	69.3 in 1971	6	56.1 in 1989	6	6.66 in 1950		0.19 in 1990
7	68.8 in 2001	7	56.7 in 1930	7	5.99 in 1930	7	0.20 in 1944
8	68.5 in 2013	8	56.8 in 1917	8	5.52 in 1973	8	0.21 in 1956
9	68.4 in 2007	9	57.5 in 1980	9	5.17 in 1969	9	0.29 in 1938
10	68.0 in 1998		57.5 in 1909	10	5.14 in 1905	10	0.30 in 1949
	68.0 in 1948			
				33	2.88 in 2025	104	2.88 in 2025
...							
20	66.6 in 2025						
	66.6 in 1926						

Normal Temperature for December at TPA = 64.9°

Normal Rainfall for December at TPA = 2.56 inches

Warmest Years		Coolest Years		Wettest Years		Driest Years	
1	76.4 in 2023	1	69.8 in 1968	1	80.29 in 2024	1	28.89 in 1956
	76.4 in 2022	2	70.1 in 1901	2	76.57 in 1959	2	29.85 in 2000
3	76.3 in 2020	3	70.3 in 1910	3	70.43 in 1957	3	31.47 in 1977
	76.3 in 2017	4	70.4 in 1981	4	67.71 in 1997	4	32.25 in 1908
5	76.2 in 2015	5	70.5 in 1969	5	67.19 in 1912	5	32.31 in 1984
6	76.1 in 2021	6	71.0 in 1976	6	66.93 in 1894	6	33.90 in 1974
7	75.8 in 2019		71.0 in 1966	7	66.65 in 1945	7	34.32 in 1999
8	75.7 in 2025		71.0 in 1940	8	66.46 in 1979	8	34.39 in 1990
9	75.6 in 2018		71.0 in 1895	9	65.95 in 1947	9	34.77 in 1927
10	75.5 in 2024		71.0 in 1892	10	65.44 in 1960	10	34.87 in 1944
				
				107	40.86 in 2025	30	40.86 in 2025

Normal Temperature for the Year at TPA = 74.5°

Normal Rainfall for the Year at TPA = 49.48 inches

ST PETERSBURG AREA (Records began in August 1914):

Warmest Decembers		Coolest Decembers		Wettest Decembers		Driest Decembers	
1	74.2 in 1931	1	56.4 in 2010	1	17.41 in 2002	1	0.07 in 1984
2	71.9 in 1971	2	56.7 in 1989	2	14.62 in 1997	2	0.14 in 1949
3	71.0 in 2021	3	56.9 in 1935	3	7.00 in 1983		0.14 in 1938
4	70.6 in 2015	4	57.1 in 1963	4	6.77 in 1973	4	0.24 in 1990
5	69.7 in 1998	5	58.7 in 1930	5	6.67 in 1930	5	0.28 in 2016
6	69.5 in 2016	6	58.8 in 1917	6	6.45 in 1969	6	0.38 in 2015
	69.5 in 1948	7	59.2 in 1962	7	6.03 in 1914	7	0.41 in 1924
8	69.4 in 2013	8	59.6 in 1950	8	5.92 in 1953	8	0.43 in 1932
9	69.3 in 2007	9	60.0 in 1954	9	5.84 in 2018	9	0.44 in 1946
10	69.2 in 2001	10	60.4 in 1944	10	5.49 in 1950	10	0.45 in 2011
11	69.0 in 2025			
	69.0 in 1984			74	0.92 in 2025	38	0.92 in 2025
					0.92 in 2001		0.92 in 2001

Normal Temperature for December at SPG = 65.1°

Normal Rainfall for December at SPG = 2.39 inches

Warmest Years		Coolest Years		Wettest Years		Driest Years	
1	76.4 in 2024	1	71.8 in 1940	1	87.62 in 1959	1	30.41 in 1984
	76.4 in 2020	2	72.3 in 1920	2	79.30 in 1953	2	32.57 in 1966
	76.4 in 2015	3	72.4 in 1968	3	73.88 in 1957	3	33.54 in 2006
4	76.3 in 2023		72.4 in 1963	4	72.81 in 1997	4	33.63 in 2023
5	76.1 in 2017	5	72.5 in 1996	5	72.59 in 1947	5	34.01 in 1927
6	76.0 in 2021	6	72.6 in 1917	6	70.12 in 1954	6	34.88 in 1956
	76.0 in 2013	7	72.7 in 1966	7	69.66 in 1988	7	36.34 in 1944
8	75.7 in 2005		72.7 in 1954	8	67.23 in 1922	8	36.40 in 2021
9	75.6 in 1946		72.7 in 1915	9	65.00 in 1952	9	36.52 in 2007
10	75.5 in 2012	10	72.8 in 1983	10	64.87 in 1995	10	36.62 in 1923
	75.5 in 1972					...	
	75.5 in 1933					30	42.55 in 2025
	75.5 in 1932						
14	75.4 in 2022						
	75.4 in 2018						
	75.4 in 1990						
17	75.3 in 1975						
18	75.2 in 2025						
	75.2 in 2006						

Normal Temperature for the Year at SPG = 74.7°

Normal Rainfall for the Year at SPG = 46.65 inches

PLANT CITY (Records began in September 1892):

Warmest Decembers		Coolest Decembers		Wettest Decembers		Driest Decembers	
1	73.0 in 2015	1	51.1 in 1935	1	14.75 in 1997	1	0.00 in 1908
2	70.6 in 1971	2	53.0 in 2010	2	9.63 in 2002	2	0.05 in 1906
3	70.5 in 2016	3	54.0 in 1930	3	7.94 in 2018	3	0.21 in 1932
4	69.7 in 2021	4	54.1 in 1910	4	7.62 in 1905	4	0.22 in 1984
5	69.6 in 1931	5	56.0 in 1989	5	6.57 in 1983	5	0.26 in 1987
6	68.9 in 1948	6	56.1 in 1963	6	6.47 in 1925		0.26 in 1917
7	68.4 in 2013	7	56.2 in 1903	7	6.14 in 1969	7	0.28 in 2016
8	67.9 in 1978	8	57.2 in 1915	8	6.06 in 1907		0.28 in 1962
9	67.7 in 2007	9	57.3 in 1901	9	6.04 in 1930	9	0.30 in 1933
10	67.6 in 1998	10	57.5 in 1917	10	5.80 in 1941	10	0.32 in 1956
11	67.1 in 2025						0.32 in 1946
				
				43	2.52 in 2025	84	2.52 in 2025
					2.52 in 1974		2.52 in 1974

Normal Temperature for December at PLCF1 = 65.0°

Normal Rainfall for December at PLCF1 = 2.54 inches

Warmest Years		Coolest Years		Wettest Years		Driest Years	
1	76.8 in 2023	1	69.2 in 1930	1	86.68 in 1959	1	32.96 in 1961
2	76.6 in 2020	2	69.4 in 1931	2	79.20 in 1947	2	36.36 in 1909
	76.6 in 2019	3	69.8 in 1940	3	78.25 in 1960	3	37.24 in 1956
4	76.1 in 2024	4	70.4 in 1928	4	76.88 in 2004	4	39.17 in 1977
5	75.8 in 2021	5	70.6 in 1942	5	75.82 in 1953	5	39.29 in 2007
6	75.7 in 2022		70.6 in 1935	6	71.97 in 1983	6	39.48 in 1981
7	75.5 in 2025	7	70.8 in 2010	7	71.76 in 1933	7	39.74 in 1990
8	75.0 in 2016		70.8 in 1926	8	70.65 in 1957	8	40.41 in 1927
9	74.9 in 2018	9	70.9 in 1976	9	70.06 in 2024	9	40.49 in 1908
10	74.2 in 1948		70.9 in 1932	10	69.35 in 1905	10	42.38 in 2000
						...	
						30	47.60 in 2025

Normal Temperature for the Year at PLCF1 = 74.3°

Normal Rainfall for the Year at PLCF1 = 56.11 inches

LAKELAND AREA (Records began in January 1915):

Warmest Decembers	Coollest Decembers	Wettest Decembers	Driest Decembers
1 73.1 in 2015	1 53.2 in 2010	1 12.28 in 1997	1 Trace in 1917
2 72.8 in 1931	2 54.8 in 1935	2 11.74 in 2002	2 0.09 in 1944
3 70.2 in 2016	3 56.2 in 1963	3 8.13 in 2018	3 0.10 in 1924
4 70.0 in 1971	4 56.8 in 1989	4 7.04 in 1983	4 0.12 in 1938
5 69.1 in 2021	5 57.3 in 1960	5 6.15 in 1930	5 0.14 in 1962
6 68.6 in 2013	6 57.9 in 1930	6 6.09 in 1925	6 0.17 in 1987
7 68.4 in 2007	7 58.2 in 1950	7 5.51 in 1989	7 0.30 in 1932
8 68.0 in 1922	8 58.4 in 1954	8 5.33 in 1941	8 0.34 in 1984
9 67.9 in 2001	9 58.9 in 1980	9 5.21 in 1949	9 0.35 in 1990
10 67.8 in 1998	10 59.0 in 1969	10 4.53 in 1950	10 0.36 in 1943
...	59.0 in 1944	...	0.36 in 1933
19 66.5 in 2025		48 2.01 in 2025	63 2.01 in 2025
		2.01 in 1948	2.01 in 1948

Normal Temperature for December at LLDF1 = 64.8°

Normal Rainfall for December at LLDF1 = 2.61 inches

Warmest Years	Coollest Years	Wettest Years	Driest Years
1 76.0 in 2023	1 70.6 in 1968	1 78.15 in 2018	1 34.93 in 1927
2 75.7 in 2020	2 70.9 in 1969	2 73.18 in 2024	2 35.83 in 1961
75.7 in 2015	3 71.0 in 1966	3 70.24 in 1959	3 36.30 in 1954
4 75.6 in 2019	71.0 in 1958	4 69.72 in 1979	4 37.36 in 1985
75.6 in 1990	71.0 in 1940	5 68.82 in 2017	5 37.80 in 1967
6 75.4 in 2024	6 71.2 in 1970	6 67.13 in 1994	6 38.06 in 1962
7 75.3 in 2021	7 71.4 in 1960	7 66.92 in 2005	7 38.26 in 2000
8 75.2 in 2017	71.4 in 1920	8 66.58 in 2002	8 38.29 in 1972
75.2 in 1994	9 71.5 in 1963	9 66.13 in 2004	9 39.43 in 1990
10 75.1 in 2025	10 71.6 in 2010	10 65.42 in 1960	10 39.57 in 1984
			39.57 in 1981
			39.57 in 1942
			...
			18 41.97 in 2025

Normal Temperature for the Year at LLDF1 = 73.9°

Normal Rainfall for the Year at LLDF1 = 56.82 inches

WINTER HAVEN AREA (Records began in March 1941):

Warmest Decembers	Coollest Decembers	Wettest Decembers	Driest Decembers
1 72.4 in 2015	1 52.7 in 2010	1 12.52 in 2002	1 0.03 in 1987
2 70.8 in 1971	2 55.5 in 1963	2 9.79 in 1997	0.03 in 1984
3 70.3 in 2021	3 57.4 in 1989	3 6.91 in 2018	3 0.07 in 1990
4 69.5 in 1948	4 59.1 in 1962	4 6.44 in 1983	4 0.21 in 1956
5 69.2 in 2016	59.1 in 1960	5 5.35 in 1989	5 0.23 in 1962
6 68.4 in 1946	6 59.2 in 1968	6 4.75 in 1991	6 0.29 in 1944
7 68.1 in 1984	7 59.3 in 1950	7 3.88 in 1947	7 0.33 in 2011
8 68.0 in 2007	8 59.8 in 1944	8 3.87 in 1950	8 0.40 in 1991
68.0 in 1991	9 59.9 in 2000	9 3.77 in 1941	0.40 in 1968
68.0 in 1986	10 60.1 in 2003	10 3.63 in 1969	10 0.47 in 1943
...	60.1 in 1952
24 66.1 in 2025		44 1.46 in 2025	38 1.46 in 2025
		1.46 in 1955	1.46 in 1955

Normal Temperature for December at GIF = 64.6°

Normal Rainfall for December at GIF = 2.68 inches

Warmest Years	Coollest Years	Wettest Years	Driest Years
1 76.6 in 2019	1 70.2 in 1968	1 73.28 in 1959	1 30.35 in 2000
2 76.2 in 2015	2 71.1 in 1981	2 69.61 in 1960	2 31.95 in 2006
3 76.1 in 2020	3 71.2 in 1963	3 65.94 in 1957	3 31.98 in 2025
4 75.8 in 2024	4 71.4 in 1977	4 65.09 in 1947	4 32.73 in 2009
75.8 in 1989	71.4 in 1969	5 64.90 in 1948	5 35.26 in 1985
6 75.7 in 1991	6 71.6 in 2010	6 63.55 in 1953	6 36.78 in 2007
7 75.4 in 2023	71.6 in 1958	7 62.94 in 1983	7 36.89 in 1980
8 75.3 in 2021	8 71.9 in 1962	8 62.73 in 1994	8 39.02 in 2021
9 75.1 in 2018	71.9 in 1960	9 62.10 in 1982	9 39.06 in 2017
75.1 in 2017	10 72.0 in 1966	10 61.77 in 2002	10 39.51 in 1972
11 75.0 in 2025			
75.0 in 1990			

Normal Temperature for the Year at GIF = 74.6°

Normal Rainfall for the Year at GIF = 46.12 inches

BARTOW (Records began in June 1892):

Warmest Decembers		Coolest Decembers		Wettest Decembers		Driest Decembers	
1	72.4 in 2015	1	53.2 in 2010	1	13.31 in 2002	1	0.00 in 1906
2	71.0 in 2013	2	54.1 in 1910	2	11.38 in 1983	2	0.05 in 1932
3	69.2 in 1948	3	54.4 in 1903	3	10.70 in 1997	3	0.08 in 1933
4	69.0 in 2016	4	55.9 in 1915	4	8.25 in 1905	4	0.15 in 1944
	69.0 in 2001	5	57.1 in 1909	5	6.45 in 2018	5	0.23 in 1962
	69.0 in 1971	6	57.3 in 1963	6	6.35 in 1900	6	0.24 in 1987
7	68.5 in 2021	7	57.4 in 1954	7	5.50 in 1925		0.24 in 1956
8	68.4 in 1998	8	57.6 in 1989	8	5.25 in 1942	8	0.27 in 1990
9	68.2 in 2006	9	58.4 in 1960	9	5.14 in 1930	9	0.28 in 1984
10	67.8 in 1986	10	59.0 in 2020	10	5.07 in 1989	10	0.29 in 1946
...				
24	65.5 in 2025			71	1.56 in 2025	64	1.56 in 2025
	65.5 in 2011						
	65.5 in 1912						

Normal Temperature for December at BARF1 = 63.6°

Normal Rainfall for December at BARF1 = 2.16 inches

Warmest Years		Coolest Years		Wettest Years		Driest Years	
1	74.9 in 1998	1	70.8 in 1901	1	83.44 in 1959	1	34.10 in 2007
2	74.8 in 2023	2	71.2 in 1968	2	77.99 in 1983	2	35.87 in 2000
3	74.6 in 2020		71.2 in 1914	3	73.96 in 1930	3	36.43 in 1927
	74.6 in 2012	4	71.3 in 1896	4	73.85 in 1960	4	37.19 in 1950
5	74.5 in 2019	5	71.5 in 1893	5	73.72 in 1957	5	37.51 in 2006
6	74.4 in 2017	6	71.6 in 1976	6	73.58 in 1947	6	40.72 in 1990
7	74.3 in 2024		71.6 in 1970	7	71.44 in 2002	7	41.00 in 1916
8	74.1 in 2021		71.6 in 1963	8	71.29 in 1924	8	41.41 in 1955
	74.1 in 1997		71.6 in 1913	9	69.90 in 1903	9	41.66 in 2025
	74.1 in 1982	10	71.9 in 1981	10	68.74 in 2022	10	42.29 in 1999
11	74.0 in 2022		71.9 in 1979				
12	73.9 in 2016		71.9 in 1956				
13	73.8 in 2025		71.9 in 1912				
	73.8 in 1995						

Normal Temperature for the Year at BARF1 = 73.1°

Normal Rainfall for the Year at BARF1 = 50.88 inches

SARASOTA-BRADENTON AREA (Records began in January 1911):

Warmest Decembers		Coolest Decembers		Wettest Decembers		Driest Decembers	
1	72.8 in 2015	1	53.0 in 2010	1	11.94 in 1997	1	0.00 in 1933
2	71.2 in 1931	2	54.9 in 1935	2	11.63 in 2002	2	0.03 in 1949
3	69.8 in 1971	3	56.8 in 1930	3	8.10 in 2018	3	0.17 in 2011
4	69.5 in 2006	4	57.4 in 1963	4	6.86 in 1914	4	0.18 in 2024
5	69.3 in 2021	5	58.0 in 1917	5	6.71 in 1977	5	0.19 in 1962
	69.3 in 2016	6	58.4 in 1915	6	6.23 in 1983	6	0.21 in 2013
7	69.1 in 2013	7	58.7 in 1989	7	6.21 in 1930	7	0.24 in 1984
8	68.8 in 2007		58.7 in 1976	8	5.80 in 1958	8	0.28 in 1923
9	68.7 in 2019	9	59.0 in 1944	9	5.72 in 1913	9	0.31 in 1938
10	68.6 in 1948	10	59.4 in 1985	10	5.58 in 1953	10	0.34 in 1946
11	68.1 in 2025		59.4 in 1980	
	68.1 in 1951			57	1.71 in 2025	58	1.71 in 2025

Normal Temperature for December at SRQ = 65.2°

Normal Rainfall for December at SRQ = 2.33 inches

Warmest Years		Coolest Years		Wettest Years		Driest Years	
1	76.3 in 2020	1	70.6 in 1977	1	82.98 in 1957	1	27.13 in 2023
2	76.2 in 2019		70.6 in 1976	2	78.59 in 1959	2	29.45 in 1944
3	76.1 in 2023		70.6 in 1940	3	78.33 in 1997	3	31.98 in 1956
4	75.3 in 2016	4	70.9 in 2010	4	78.07 in 2024	4	32.19 in 1951
5	75.2 in 2015		70.9 in 1981	5	77.50 in 1912	5	33.23 in 2009
6	75.1 in 2024		70.9 in 1968	6	73.49 in 1960	6	34.00 in 1923
7	74.8 in 2025		70.9 in 1930	7	72.21 in 1922	7	34.32 in 2008
	74.8 in 2021	8	71.0 in 1931	8	68.52 in 1943	8	36.97 in 1950
9	74.7 in 2022		71.0 in 1915	9	68.02 in 1983	9	37.45 in 2000
10	74.6 in 2017	10	71.1 in 1928	10	67.46 in 1958	10	38.87 in 1973
						...	
						29	45.94 in 2025

Normal Temperature for the Year at SRQ = 74.1°

Normal Rainfall for the Year at SRQ = 49.05 inches

VENICE (Records began in May 1955):

Warmest Decembers		Coolest Decembers		Wettest Decembers		Driest Decembers	
1	73.1 in 1987	1	54.8 in 2010	1	9.48 in 1997	1	0.04 in 2016
2	72.9 in 2015	2	57.7 in 1989	2	7.39 in 2018	2	0.07 in 2011
3	70.9 in 1971	3	57.9 in 1963	3	6.50 in 1983	3	0.10 in 2014
4	70.7 in 2016	4	59.4 in 1976	4	6.00 in 2002	4	0.13 in 2013
5	70.2 in 2021		59.4 in 1960	5	5.34 in 2009		0.13 in 1991
6	69.3 in 1998	6	59.7 in 1981	6	5.25 in 1986	6	0.18 in 1987
7	69.1 in 2011	7	60.1 in 2003	7	4.94 in 2003	7	0.33 in 1962
8	68.6 in 1982		60.1 in 1962	8	4.16 in 1958	8	0.37 in 2025
9	68.3 in 2006	9	60.2 in 1975	9	4.12 in 1989	9	0.44 in 1984
10	68.2 in 2001	10	60.5 in 1973	10	3.85 in 1979	10	0.49 in 2024
...							
17	67.1 in 2025						
	67.1 in 1972						

Normal Temperature for December at VNCF1 = 64.9°

Normal Rainfall for December at VNCF1 = 2.31 inches

Warmest Years		Coolest Years		Wettest Years		Driest Years	
1	76.3 in 2023	1	70.9 in 1981	1	75.08 in 1995	1	29.07 in 1990
2	76.0 in 2012	2	71.2 in 1977	2	74.15 in 1957	2	29.72 in 2023
3	75.9 in 2095	3	71.8 in 1962	3	73.28 in 1959	3	32.46 in 2007
4	75.7 in 2024	4	71.9 in 1978	4	72.40 in 1983	4	33.83 in 2025
	75.7 in 2015	5	72.0 in 1969	5	66.51 in 2024	5	35.52 in 1985
	75.7 in 1998		72.0 in 1960	6	65.46 in 2003	6	36.50 in 1961
7	75.6 in 2011	7	72.1 in 1966	7	63.35 in 2005	7	36.69 in 1956
8	75.3 in 2020		72.1 in 1963	8	63.13 in 1992	8	37.23 in 1981
9	75.1 in 1997		72.1 in 1956	9	62.98 in 1969	9	38.45 in 2021
	75.1 in 1994	10	72.3 in 1970	10	61.25 in 2017	10	38.50 in 2009
11	75.0 in 2017						
12	74.7 in 2022						
13	74.6 in 2025						

Normal Temperature for the Year at VNCF1 = 73.7°

Normal Rainfall for the Year at VNCF1 = 51.27 inches

MYAKKA RIVER STATE PARK (Temperature records began in March 1956
and Rainfall records began in Sep 1943):

Warmest Decembers	Coollest Decembers	Wettest Decembers	Driest Decembers
1 73.3 in 2015	1 53.4 in 2010	1 10.89 in 1997	1 0.03 in 1949
2 70.8 in 2016	2 55.9 in 1969	2 9.65 in 2002	2 0.10 in 1991
3 69.4 in 2013	3 57.0 in 1989	3 8.20 in 1983	3 0.16 in 1961
4 69.3 in 1998	4 57.2 in 1960	4 7.59 in 2018	4 0.17 in 2011
5 69.2 in 1971	5 57.3 in 1962	5 6.32 in 1958	5 0.19 in 1987
6 69.1 in 2006	6 58.7 in 1968	6 6.06 in 2009	6 0.22 in 2013
7 68.7 in 2007	7 59.1 in 1957	7 5.97 in 1977	0.22 in 1962
8 68.1 in 1982	8 59.9 in 2002	8 5.48 in 2003	8 0.25 in 1956
9 68.0 in 1991	9 60.0 in 2020	9 5.00 in 2015	9 0.29 in 1943
10 67.9 in 1992	60.0 in 1973	10 4.23 in 1989	10 0.36 in 1984
67.9 in 1986			...
...			19 0.57 in 2025
22 65.2 in 2025			

Normal Temperature for December at MKCF1 = 64.8°
Normal Rainfall for December at MKCF1 = 2.51 inches

Warmest Years	Coollest Years	Wettest Years	Driest Years
1 76.0 in 2015	1 70.6 in 1962	1 82.31 in 1995	1 36.97 in 1961
2 75.5 in 2019	2 71.3 in 1958	2 80.36 in 1983	2 38.15 in 1956
3 75.0 in 1990	3 71.6 in 1970	3 78.82 in 2018	3 38.24 in 1955
4 74.8 in 1982	71.6 in 1960	4 77.59 in 1959	4 39.15 in 1944
5 74.5 in 2018	5 71.8 in 2010	5 76.72 in 1982	5 42.29 in 1950
74.5 in 1999	71.8 in 1977	6 76.60 in 2003	6 42.54 in 1946
7 74.1 in 2023	7 72.1 in 1981	7 76.52 in 1998	7 44.03 in 1985
74.1 in 2013	72.1 in 1976	8 76.04 in 1997	8 44.10 in 1986
9 74.0 in 2012	72.1 in 1973	9 75.62 in 1957	9 44.36 in 2021
74.0 in 2011	10 72.2 in 1988	10 71.72 in 2017	10 45.21 in 2000
...
17 73.3 in 2025	16 73.3 in 2025		21 48.31 in 2025
73.3 in 1996	73.3 in 1996		

Normal Temperature for the Year at MKCF1 = 73.6°
Normal Rainfall for the Year at MKCF1 = 61.07 inches

WAUCHULA (Records began in January 1933):

Warmest Decembers		Coolest Decembers		Wettest Decembers		Driest Decembers	
1	72.0 in 2015	1	50.0 in 2010	1	7.89 in 2002	1	0.00 in 2001
2	70.0 in 1971	2	54.4 in 2009	2	6.29 in 1997	2	0.11 in 1938
3	69.8 in 2007	3	55.7 in 1935	3	6.10 in 2018	3	0.12 in 1956
4	68.7 in 2016	4	56.8 in 1963	4	5.57 in 2009	4	0.14 in 1933
	68.7 in 1948	5	57.0 in 2003	5	5.51 in 1986	5	0.20 in 2011
6	68.4 in 1940	6	58.5 in 1989	6	4.83 in 1977	6	0.21 in 1934
7	67.8 in 2006	7	58.6 in 2020	7	4.77 in 1958	7	0.22 in 2013
8	67.7 in 1986		58.6 in 2002	8	4.20 in 1940	8	0.28 in 1991
9	67.6 in 1946		58.6 in 1954	9	4.13 in 1950	9	0.31 in 2014
10	67.5 in 1941	10	58.7 in 2005	10	4.11 in 1989		0.31 in 1949
...		
33	64.7 in 2025	55	64.7 in 2025			26	0.90 in 2025
	64.7 in 1987		64.7 in 1987				

Normal Temperature for December at WAUF1 = 63.0°

Normal Rainfall for December at WAUF1 = 2.13 inches

Warmest Years			Coolest Years			Wettest Years			Driest Years		
1	74.9	in 1990	1	70.8	in 1996	1	83.48	in 1953	1	29.56	in 2000
2	74.5	in 2008	2	70.9	in 2014	2	82.10	in 1947	2	36.59	in 2007
	74.5	in 1948	3	71.3	in 1954	3	69.13	in 1959	3	36.66	in 1981
4	74.4	in 2015	4	71.4	in 1981	4	68.89	in 1939	4	36.93	in 1961
5	74.3	in 1991		71.4	in 1968	5	67.34	in 1983	5	40.25	in 1989
	74.3	in 1933		71.4	in 1956	6	66.05	in 1998	6	40.27	in 1999
7	74.2	in 2009	7	71.5	in 2012	7	65.77	in 1997	7	41.39	in 2006
8	74.1	in 2023		71.5	in 2011	8	64.59	in 2022	8	42.06	in 1967
	74.1	in 1989	9	71.6	in 1976	9	63.91	in 1960	9	43.04	in 2025
10	74.0	in 2024	10	71.7	in 2013	10	62.98	in 1943	10	43.58	in 1950
	74.0	in 2019		71.7	in 1999						
...				71.7	in 1940						
20	73.4	in 2025									
	73.4	in 1972									
	73.4	in 1937									
	73.4	in 1934									

Normal Temperature for the Year at WAUF1 = 72.4°

Normal Rainfall for the Year at WAUF1 = 52.00 inches

ARCHBOLD BIO STN (Records began in January 1969):

Warmest Decembers		Coolest Decembers		Wettest Decembers		Driest Decembers	
1	73.4 in 2015	1	52.1 in 2010	1	7.60 in 1997	1	0.22 in 1981
2	70.5 in 2016	2	56.3 in 1989	2	6.22 in 2002	2	0.27 in 2005
3	69.1 in 1971	3	57.8 in 1969	3	4.90 in 1977	3	0.31 in 1970
4	69.0 in 2006	4	59.1 in 2003	4	4.16 in 1978	4	0.38 in 2000
5	68.4 in 2013	5	59.2 in 1980	5	3.91 in 2023	5	0.40 in 2021
6	67.3 in 2021	6	59.4 in 1993	6	3.83 in 1994	6	0.42 in 2013
7	67.2 in 1986	7	60.1 in 1985	7	3.75 in 2003	7	0.43 in 2011
8	67.0 in 2007	8	60.3 in 2020	8	3.35 in 1986	8	0.51 in 1982
9	66.7 in 1998	9	60.5 in 2005	9	3.10 in 2020	9	0.54 in 2016
10	66.3 in 1978		60.5 in 2002	10	3.04 in 2015	10	0.55 in 2001

Average Temperature for Dec 2025 = Not Available Yet

Normal Temperature for December at ACHF1 = 64.4°

Total Rainfall for Dec 2025 = Not Available Yet

Normal Rainfall for December at ACHF1 = 2.03 inches

Warmest Years		Coolest Years		Wettest Years		Driest Years	
1	75.4 in 2015	1	70.1 in 2010	1	72.61 in 2002	1	27.31 in 2000
2	74.4 in 2023	2	70.6 in 1981	2	66.06 in 2004	2	33.00 in 2007
3	74.3 in 2020	3	70.7 in 1983	3	64.09 in 1969	3	36.26 in 1980
	74.3 in 2017	4	71.0 in 1970	4	63.49 in 2013	4	37.46 in 2009
5	74.1 in 2019		71.0 in 1969	5	62.23 in 1992	5	41.45 in 1971
6	74.0 in 1990	6	71.1 in 2000	6	61.73 in 2015	6	43.02 in 1975
7	73.9 in 2024		71.1 in 1988	7	61.07 in 1982	7	43.84 in 1996
	73.9 in 2022		71.1 in 1984	8	60.94 in 2023	8	43.97 in 1985
	73.9 in 2016	9	71.2 in 1996	9	60.89 in 1979	9	45.03 in 1981
10	73.7 in 1991	10	71.3 in 1987	10	60.33 in 2001	10	45.06 in 1972
	73.7 in 1975		71.3 in 1977				
			71.3 in 1976				

Average Temperature for 2025 = Not Available Yet

Normal Temperature for the Year at ACHF1 = 72.9°

Total Rainfall for 2025 = Not Available Yet

Normal Rainfall for the Year at ACHF1 = 54.23 inches

PUNTA GORDA AREA (Records began in May 1914):

Warmest Decembers		Coolest Decembers		Wettest Decembers		Driest Decembers	
1	72.8 in 2015	1	54.0 in 2010	1	6.88 in 2002	1	0.00 in 1933
2	72.5 in 1931	2	57.6 in 1935	2	6.50 in 1925	2	0.07 in 1938
3	71.4 in 1948	3	58.0 in 1963	3	6.47 in 1997	3	0.09 in 1926
4	70.4 in 2013	4	58.4 in 1917	4	5.42 in 1995	4	0.12 in 1932
	70.4 in 1971	5	59.9 in 2003	5	4.95 in 1958	5	0.15 in 2014
	70.4 in 1946	6	60.1 in 1989	6	4.92 in 1977	6	0.17 in 2011
7	70.0 in 2021		60.1 in 1969	7	4.63 in 2009	7	0.25 in 1981
	70.0 in 2016	8	60.3 in 1968	8	4.49 in 1967	8	0.27 in 1928
	70.0 in 1932	9	60.6 in 1975	9	4.44 in 2023	9	0.28 in 1991
10	69.7 in 1951	10	60.7 in 1930	10	4.31 in 1969	10	0.34 in 2000
			60.7 in 1915				0.34 in 1962
...		
36	67.1 in 2025	71	67.1 in 2025	57	1.14 in 2025	54	1.14 in 2025
	67.1 in 2017		67.1 in 2017				

Normal Temperature for December at PGD = 65.8°

Normal Rainfall for December at PGD = 1.99 inches

Warmest Years		Coolest Years		Wettest Years		Driest Years	
1	77.0 in 2024	1	71.5 in 1968	1	88.10 in 1947	1	30.01 in 2007
2	76.8 in 1948	2	71.6 in 2010	2	87.09 in 1959	2	30.07 in 1927
3	76.7 in 2023	3	71.8 in 1969	3	81.06 in 1995	3	32.85 in 1990
4	76.4 in 1946		71.8 in 1915	4	65.33 in 1922	4	35.07 in 1955
5	75.9 in 2020	5	71.9 in 1976	5	64.87 in 2003	5	36.18 in 2000
6	75.8 in 1949		71.9 in 1970	6	64.43 in 1983	6	36.87 in 1976
7	75.6 in 2018	7	72.3 in 1940	7	63.97 in 1928	7	37.41 in 1923
	75.6 in 1990	8	72.4 in 1977	8	63.30 in 2018	8	38.03 in 1920
	75.6 in 1945	9	72.6 in 1942	9	62.41 in 2016	9	38.11 in 1971
10	75.5 in 2015	10	72.7 in 1930	10	62.02 in 1958	10	38.84 in 2025
...							
19	75.1 in 2025						
	75.1 in 2017						
	75.1 in 1961						
	75.1 in 1950						
	75.1 in 1933						

Normal Temperature for the Year at PGD = 74.3°

Normal Rainfall for the Year at PGD = 52.97 inches

FORT MYERS AREA (Records began in January 1902):

Warmest Decembers		Coolest Decembers		Wettest Decembers		Driest Decembers	
1	73.6 in 2015	1	56.7 in 2010	1	7.04 in 1925	1	0.01 in 1924
2	73.3 in 2016	2	58.4 in 1935	2	6.21 in 1905	2	0.02 in 1984
3	72.8 in 1931	3	58.5 in 1903	3	5.71 in 2019		0.02 in 1906
4	72.6 in 2021	4	58.8 in 1910	4	5.46 in 1997	4	0.05 in 2014
5	72.3 in 1971	5	59.3 in 1963	5	5.42 in 1940	5	0.09 in 2005
6	71.5 in 2013	6	60.3 in 1950	6	5.26 in 1986	6	0.10 in 1956
7	71.2 in 2007	7	60.5 in 1954	7	5.16 in 1979	7	0.13 in 1933
8	70.9 in 2006	8	60.8 in 1989	8	4.68 in 2003	8	0.14 in 1951
9	70.7 in 2019	9	61.0 in 1969	9	4.35 in 1978	9	0.15 in 1926
10	70.5 in 1948		61.0 in 1930	10	4.18 in 2023	10	0.16 in 1968
...				
15	69.6 in 2025			86	0.64 in 2025	39	0.64 in 2025
	69.6 in 1978						

Normal Temperature for December at FMY = 67.3°

Normal Rainfall for December at FMY = 1.90 inches

Warmest Years		Coolest Years		Wettest Years		Driest Years	
1	78.0 in 2023	1	71.2 in 1910	1	80.45 in 2024	1	32.83 in 1964
2	77.6 in 2022	2	71.8 in 1903	2	80.17 in 1947	2	32.85 in 1927
3	77.1 in 2020	3	72.1 in 1904	3	77.35 in 1922	3	33.93 in 1944
4	77.0 in 2015	4	72.3 in 1958	4	74.85 in 1983	4	35.00 in 1988
	77.0 in 1990		72.3 in 1902	5	74.75 in 1912	5	36.19 in 1950
6	76.9 in 2021	6	72.4 in 1977	6	74.46 in 2005	6	38.23 in 2025
7	76.8 in 2019		72.4 in 1917	7	73.14 in 1995	7	38.50 in 1907
8	76.7 in 2024	8	72.5 in 1976	8	72.70 in 2022	8	39.88 in 2009
9	76.6 in 1994		72.5 in 1906	9	71.94 in 1969	9	41.68 in 1918
10	76.5 in 2025	10	72.8 in 1983	10	70.64 in 2003	10	41.72 in 1938
			72.8 in 1969				
			72.8 in 1940				
			72.8 in 1909				

Normal Temperature for the Year at FMY = 75.4°

Normal Rainfall for the Year at FMY = 57.41 inches

For more Climate information visit our web site at the following link:
<https://www.weather.gov/tampabay> and then go to the Climate and Past
Weather drop down menu above the graphical forecast images.