



NOAA - National Weather Service

Tampa Bay Area

2525 14th Avenue SE, Ruskin, Florida 33570

813-645-2323 <https://weather.gov/tampabay>

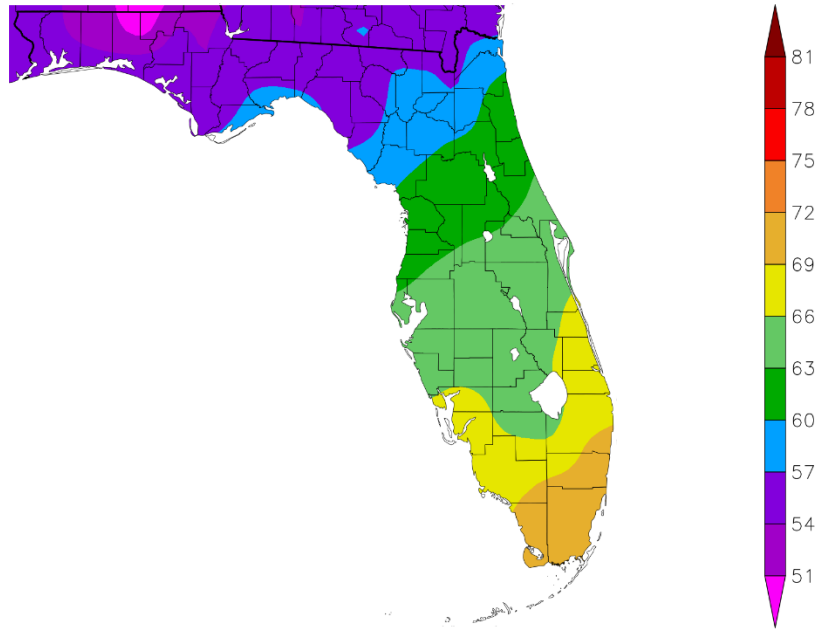
December and 2023 Climate Summary for West Central and Southwest Florida

In December 2023 we saw a series of cold fronts and one strong low-pressure system move across the region. Temperatures warmed up some ahead of these and then fell for several days behind each. Overall, for the month, temperatures averaged slightly below normal to slightly above normal.

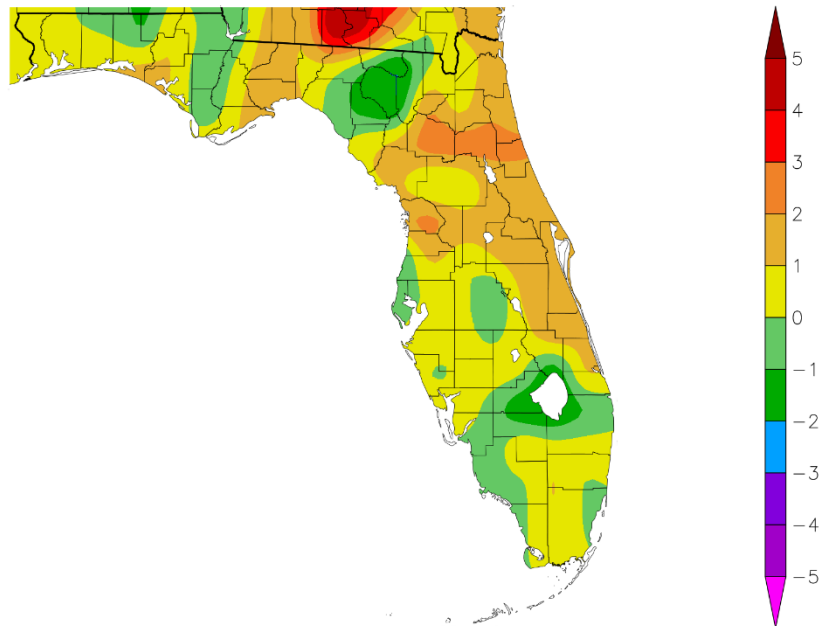
DECEMBER TEMPERATURE (°F):

Location	December 2023		Normal Dec Temp	Dep fm Normal	Records Began
	Rank	Avg Temp			
Fort Myers Area	48th Warmest	67.4°	67.3°	+0.1°	Jan 1902
Punta Gorda Area	38th Warmest(tie)	66.9°	65.8°	+1.1°	May 1914
Sarasota-Bradenton Area	19th Warmest(tie)	66.4°	65.2°	+1.2°	Jan 1911
Venice	25th Warmest(tie)	65.6°	64.9°	+0.7°	May 1955
Plant City	31st Warmest(tie)	65.1°	65.0°	+0.1°	Sep 1892
Lakeland Area	39th Warmest	65.0°	64.8°	+0.2°	Jan 1915
Tampa Area	41st Warmest(tie)	64.9°	64.9°	0.0°	Apr 1890
Archbold Bio Stn	21st Warmest	64.6°	64.4°	+0.2°	Jan 1969
St Petersburg Area	57th Coolest	64.4°	65.1°	-0.7°	Aug 1914
Winter Haven Area	32nd Coolest(tie)	64.2°	64.6°	-0.4°	Mar 1941
Bartow	35th Warmest	64.0°	63.6°	+0.4°	Jun 1892
Myakka River State Pk	27th Coolest(tie)	63.8°	64.8°	-1.0°	Mar 1956
Wauchula 2 N	40th Warmest(tie)	63.6°	63.0°	+0.6°	Jan 1933
St. Leo	49th Warmest(tie)	62.4°	62.1°	+0.3°	Apr 1895
Brooksville Area	46th Warmest(tie)	62.0°	60.3°	+1.7°	Jan 1892
Inverness 3 SE	24th Warmest	61.2°	59.0°	+2.2°	Jul 1948
Chiefland 5 ESE	27th Warmest	57.6°	57.4°	+0.2°	Jul 1956

Temperature (F)
12/1/2023 - 12/31/2023



Departure from Normal Temperature (F)
12/1/2023 - 12/31/2023



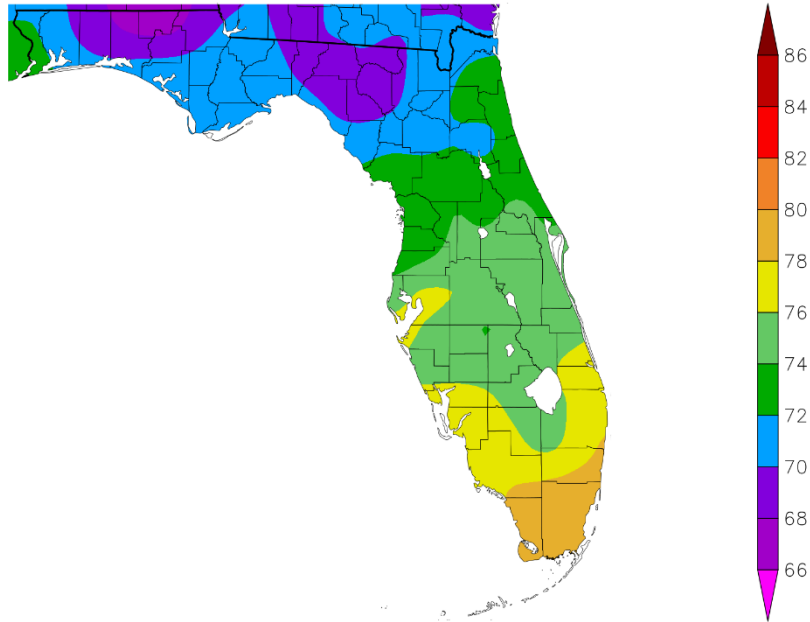
Graphics Source: NOAA Regional Climate Centers

As for 2023, it was a rather warm year with temperatures ending up about 1 to 3 degrees above normal which placed all of the official NWS sites in the Top Ten Warmest since records began.

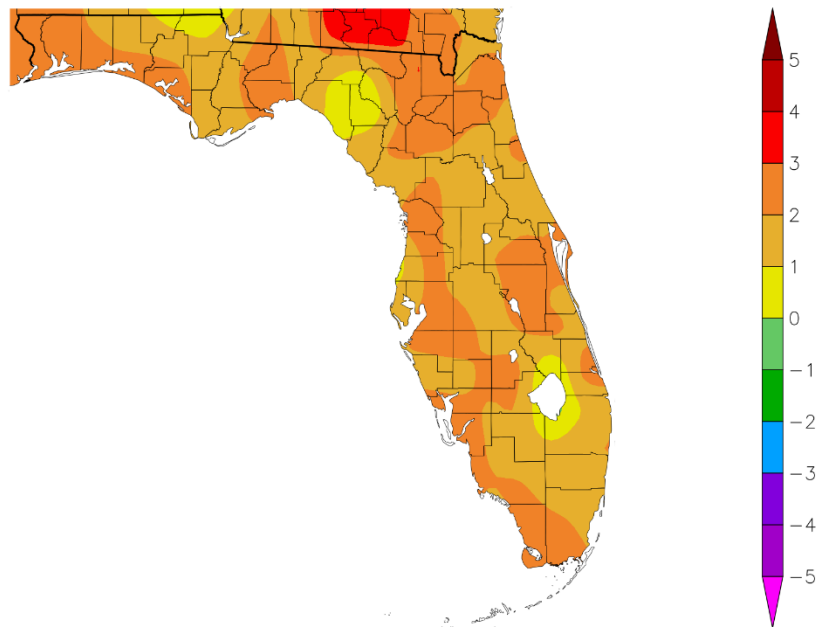
2023 YEARLY AVERAGE TEMPERATURE (°F):

Location	2023 Rank	Avg Temp	Normal Ann Temp	Dep fm Normal	Records Began
Fort Myers Area	1st Warmest	78.0°	75.4°	+2.6°	Jan 1902
Plant City	1st Warmest	76.9°	74.3°	+2.6°	Sep 1892
Punta Gorda Area	2nd Warmest	76.7°	74.3°	+2.4°	May 1914
Tampa Area	1st Warmest (tie)	76.4°	74.5°	+1.9°	Apr 1890
Venice	1st Warmest	76.3°	73.7°	+2.6°	May 1955
St Petersburg Area	3rd Warmest (tie)	76.3°	74.7°	+1.6°	Aug 1914
Sarasota-Bradenton Area	3rd Warmest	76.1°	74.1°	+2.0°	Jan 1911
Lakeland Area	1st Warmest	76.0°	73.9°	+2.1°	Jan 1915
Winter Haven Area	6th Warmest	75.4°	74.6°	+0.8°	Mar 1941
Bartow	2nd Warmest	74.8°	73.1°	+1.7°	Jun 1892
Archbold Bio Stn	2nd Warmest	74.4°	72.9°	+1.5°	Jan 1969
Wauchula 2 N	8th Warmest (tie)	74.1°	72.4°	+1.7°	Jan 1933
Myakka River State Pk	10th Warmest (tie)	74.1°	73.6°	+0.5°	Mar 1956
St. Leo	10th Warmest (tie)	73.6°	71.9°	+1.7°	Apr 1895
Brooksville Area	7th Warmest	73.1°	70.7°	+2.4°	Jan 1892
Chiefland 5 ESE	5th Warmest	71.3°	69.2°	+2.1°	Jul 1956

Temperature (F)
1/1/2023 - 12/31/2023



Departure from Normal Temperature (F)
1/1/2023 - 12/31/2023

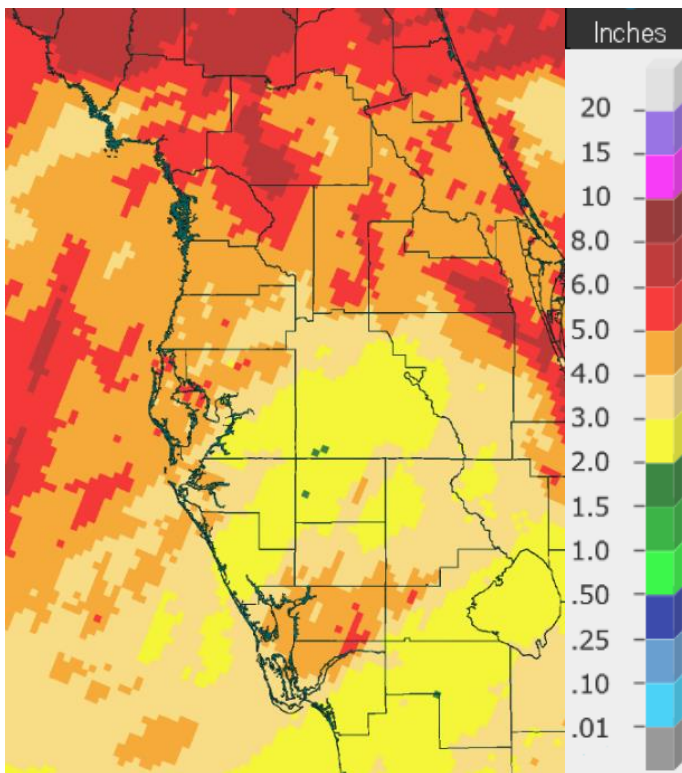


Graphics Source: NOAA Regional Climate Centers

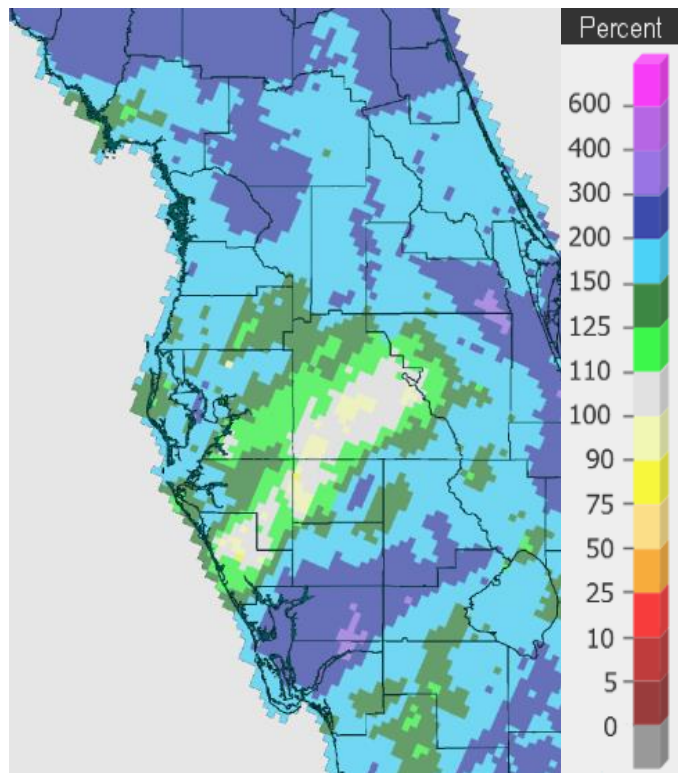
Taking a look at rainfall, December saw varying amounts with most locations near to above normal.

DECEMBER RAINFALL (inches):

Location	December Rank	2023 Rain Total	Normal Dec Rain	Dep fm Normal	Records Began
Chiefland 5 ESE	4th Wettest	8.55	3.25	+5.30	Jul 1956
Inverness 3 SE	9th Wettest	5.08	2.48	+2.60	Jul 1948
Tampa Area	14th Wettest	4.59	2.56	+2.03	Apr 1890
Punta Gorda Area	9th Wettest	4.44	1.99	+2.45	May 1914
Brooksville Area	26th Wettest	4.20	2.56	+1.64	Jan 1892
Fort Myers Area	10st Wettest	4.18	1.90	+2.28	Jan 1902
St. Leo	22nd Wettest	4.07	2.53	+1.54	Apr 1895
Archbold Bio Stn	5th Wettest	3.91	2.03	+1.88	Jan 1969
Sarasota-Bradenton Area	20th Wettest	3.62	2.33	+1.29	Jan 1911
St. Petersburg Area	26th Wettest	3.48	2.39	+1.09	Aug 1914
Venice	14th Wettest	3.27	2.31	+1.06	May 1955
Plant City	30th Wettest	3.22	2.54	+0.68	Sep 1892
Lakeland Area	29th Wettest (tie)	2.91	2.61	+0.30	Jan 1915
Wauchula 2 N	18th Wettest	2.78	2.13	+0.65	Jan 1933
Myakka River State Pk	22nd Wettest	2.77	2.51	+0.26	Sep 1943
Winter Haven Area	19th Wettest	2.74	2.68	+0.06	Mar 1941
Bartow	39th Wettest (tie)	2.53	2.16	+0.37	Jun 1892



December 2023 Rainfall

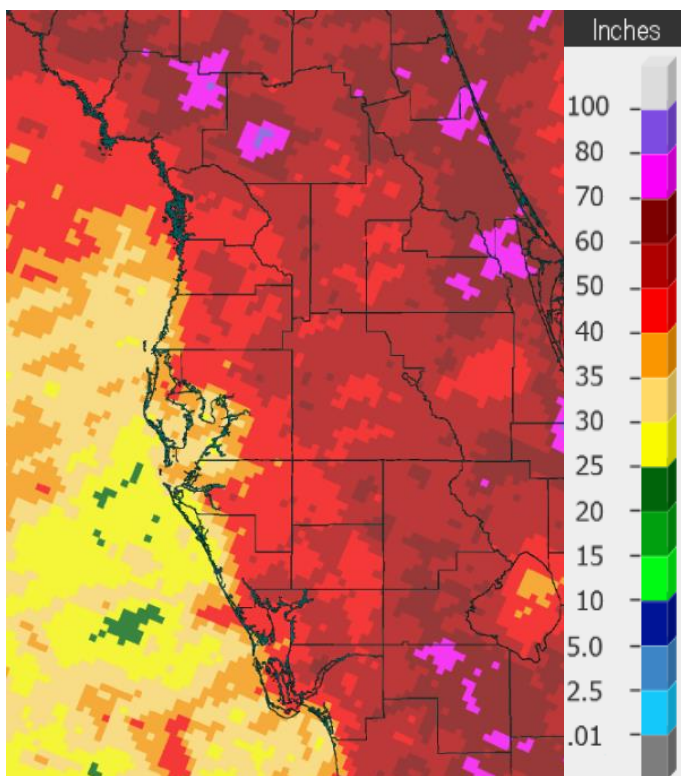


Percent of Normal

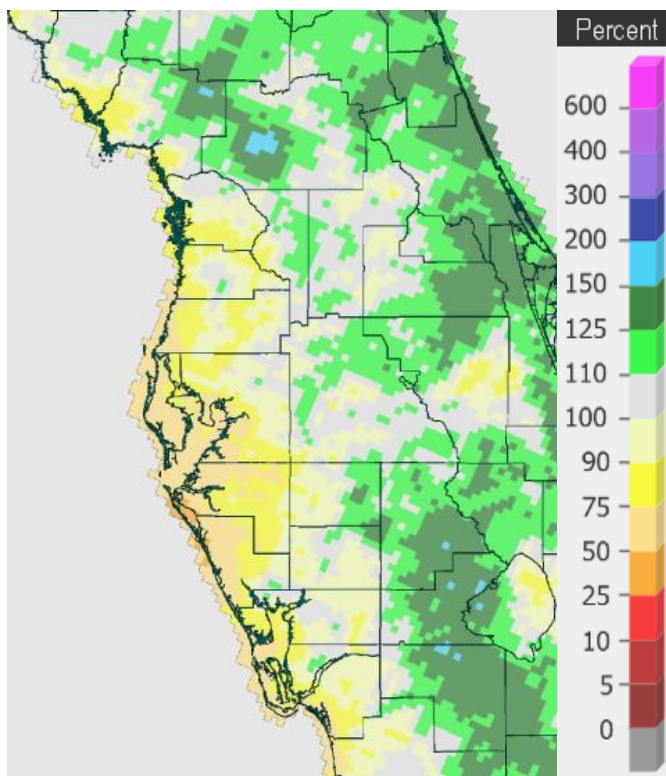
As for 2023 though, coastal areas were generally below normal, especially from around the Tampa Bay area southward through Venice, with the interior near to above normal.

2023 RAINFALL (inches):

Location	2023 Rank	Rain Total	Normal Ann Rain	Dep fm Normal	Records Began
Archbold Bio Stn	8th Wettest	60.94	54.23	+6.71	Jan 1969
Plant City	45th Driest	51.50	56.11	-4.61	Sep 1892
Lakeland Area	39th Driest	50.34	56.82	-6.48	Jan 1915
Chiefland 5 ESE	12th Driest	50.21	57.10	-6.89	Jul 1956
Brooksville Area	39th Driest	49.58	51.94	-2.36	Jan 1892
Punta Gorda Area	30th Driest	48.65	52.97	-4.32	May 1914
Bartow	32nd Driest	47.92	50.88	-2.96	Jun 1892
Myakka River State Pk	18th Driest	47.62	61.07	-13.45	Sep 1943
St. Leo	25th Driest	47.21	53.46	-6.25	Apr 1895
Fort Myers Area	26th Driest	47.12*	57.41	-10.29	Jan 1902
Winter Haven Area	41st Wettest	46.40	46.12	+0.28	Mar 1941
Inverness 3 SE	11th Driest	45.31	52.39	-7.08	Jul 1948
Wauchula 2 N	10th Driest	43.63	52.00	-8.37	Jan 1933
Tampa Area	16th Driest	37.15	49.48	-12.33	Apr 1890
St. Petersburg Area	4th Driest	33.63	46.65	-13.02	Aug 1914
Venice	2nd Driest	29.72	51.27	-21.55	May 1955
Sarasota-Bradenton Area	1st Driest	27.13	49.05	-21.92	Jan 1911

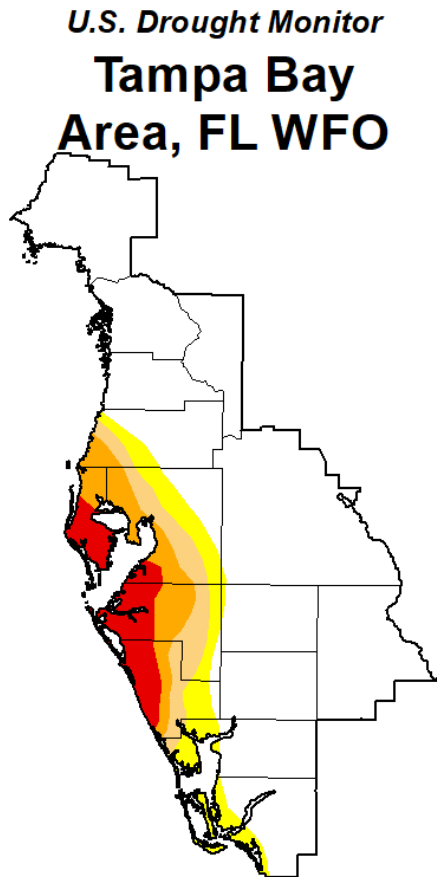


2023 Rainfall



Percent of Normal

This dry weather occurred thanks to many days during the summer having a westerly wind flow which took the majority of our typical afternoon and evening thunderstorms well inland and to the east coast. This led to Severe to Extreme Drought conditions for areas near the coast from around Tampa Bay south through Sarasota County for the second half of the year. The map below shows the conditions near the end of the year.



December 26, 2023

(Released Thursday, Dec. 28, 2023)

Valid 7 a.m. EST

Drought Conditions (Percent Area)

	None	D0-D4	D1-D4	D2-D4	D3-D4	D4
Current	75.91	24.09	16.85	11.48	5.61	0.00
Last Week <i>12-19-2023</i>	72.82	27.18	18.94	11.48	5.61	0.00
3 Months Ago <i>09-26-2023</i>	70.22	29.78	17.88	9.92	3.60	0.00
Start of Calendar Year <i>01-03-2023</i>	89.10	10.90	4.90	0.30	0.00	0.00
Start of Water Year <i>09-26-2023</i>	70.22	29.78	17.88	9.92	3.60	0.00
One Year Ago <i>12-27-2022</i>	89.10	10.90	4.84	0.00	0.00	0.00

Intensity:

- None
- D0 Abnormally Dry
- D1 Moderate Drought
- D2 Severe Drought
- D3 Extreme Drought
- D4 Exceptional Drought

The Drought Monitor focuses on broad-scale conditions. Local conditions may vary. For more information on the Drought Monitor, go to <https://droughtmonitor.unl.edu/About.aspx>

Author:

Rocky Bilotta
NCEI/NOAA



droughtmonitor.unl.edu

On the following pages are tables of the Top Ten Warmest, Coolest, Wettest, and Driest Decembers and Years at some official NWS locations, which include the average/total so far for this December and 2023 where available, and the 1991-2020 Normal temperature and rainfall for the month of December and Annually.

CHIEFLAND 5 ESE (Records began in July 1956):

Warmest Decembers		Coolest Decembers		Wettest Decembers		Driest Decembers	
1	65.0 in 2021	1	47.7 in 2010	1	11.85 in 2018	1	0.00 in 1956
2	64.7 in 1971	2	48.0 in 1963	2	9.84 in 1964	2	0.04 in 2015
3	63.7 in 1998	3	50.2 in 1989	3	9.68 in 1997	3	0.42 in 2001
4	63.7 in 1984	4	51.3 in 1960	4	8.55 in 2023		0.42 in 1984
5	62.1 in 1982	5	52.2 in 2005	5	8.39 in 2005	5	0.51 in 2011
6	61.9 in 1990	6	52.3 in 2003	6	7.77 in 1996	6	0.66 in 2010
7	61.6 in 1956	7	52.5 in 1993	7	7.47 in 2019	7	0.71 in 2021
8	61.5 in 2001	8	52.9 in 1980	8	6.66 in 1967	8	0.72 in 1980
9	61.4 in 2006	9	53.0 in 1985	9	6.52 in 1983	9	0.78 in 1985
	61.4 in 1991		53.0 in 1968	10	6.20 in 1969	10	0.80 in 1994
...		...					
27	57.6 in 2023	36	57.6 in 2023				

Normal Temperature for December at CHIF1 = 57.4°
 Normal Rainfall for December at CHIF1 = 3.25 inches

Warmest Years		Coolest Years		Wettest Years		Driest Years	
1	72.0 in 1998	1	66.5 in 2010	1	99.47 in 1964	1	40.77 in 2008
2	71.8 in 2020	2	67.0 in 1969	2	77.29 in 1959	2	41.70 in 2011
3	71.6 in 1990	3	67.4 in 1963	3	76.86 in 2018	3	41.85 in 2000
4	71.5 in 2018	4	67.7 in 1966	4	74.06 in 2004	4	43.05 in 2006
5	71.3 in 2023	5	68.0 in 1976	5	70.31 in 1996	5	45.45 in 1990
6	71.1 in 1991	6	68.2 in 1958	6	69.40 in 1983	6	45.90 in 2022
7	70.8 in 1982	7	68.4 in 2000	7	68.98 in 1965	7	46.69 in 2007
8	70.6 in 2021		68.4 in 1962	8	67.91 in 1982	8	47.05 in 1999
9	70.5 in 2022	9	68.5 in 1996	9	67.59 in 1966	9	48.04 in 1977
10	70.4 in 1975		68.5 in 1977	10	67.33 in 1957	10	49.21 in 1972
						11	49.50 in 2020
						12	50.21 in 2023

Normal Temperature for the Year at CHIF1 = 69.2°
 Normal Rainfall for the Year at CHIF1 = 57.10 inches

INVERNESS 3 SE (Records began in July 1948):

Warmest Decembers	Coollest Decembers	Wettest Decembers	Driest Decembers
1 69.1 in 2015	1 47.7 in 2010	1 11.23 in 2018	1 0.11 in 1984
2 67.0 in 1948	2 50.1 in 1989	2 10.46 in 1997	2 0.14 in 2011
3 66.8 in 1971	3 52.4 in 2002	3 7.80 in 1953	3 0.26 in 1956
4 66.3 in 2016	4 54.1 in 2005	4 6.64 in 2002	4 0.42 in 1998
5 65.4 in 2021	5 54.3 in 1963	5 6.37 in 1973	5 0.50 in 2016
6 65.3 in 1949	6 54.4 in 1993	6 5.40 in 1969	6 0.63 in 2001
7 64.9 in 1967	7 55.0 in 1960	7 5.30 in 1977	7 0.73 in 2010
8 64.4 in 1956	8 55.4 in 2000	8 5.23 in 1972	8 0.75 in 1961
64.4 in 1951	9 55.5 in 2003	9 5.08 in 2023	9 0.77 in 2021
10 64.3 in 2007	10 55.9 in 1997	10 5.05 in 1981	10 0.79 in 1990
...			
24 61.2 in 2023			

Normal Temperature for December at INV1 = 59.0
 Normal Rainfall for December at INV1 = 2.48 inches

Warmest Years	Coollest Years	Wettest Years	Driest Years
1 73.4 in 2015	1 68.8 in 1988	1 87.00 in 1960	1 35.66 in 1999
2 73.0 in 2020	2 68.9 in 2010	2 77.45 in 2021	2 36.50 in 1956
3 72.8 in 1949	3 69.0 in 1996	3 76.21 in 1953	3 37.34 in 1990
4 72.6 in 1953	4 69.3 in 1995	4 75.47 in 1982	4 38.22 in 2000
5 72.4 in 2022	5 69.4 in 2005	5 69.77 in 1959	5 40.35 in 2006
6 72.3 in 2019	6 69.6 in 1992	6 68.72 in 1964	6 42.22 in 1998
7 72.2 in 1975	7 69.7 in 1993	7 68.65 in 2018	7 43.28 in 1955
72.2 in 1974	8 69.8 in 1981	8 65.24 in 1958	8 44.24 in 1961
72.2 in 1959	68.8 in 1977	9 63.25 in 2002	9 44.29 in 1954
72.2 in 1957	10 69.9 in 2001	10 62.76 in 1992	10 45.17 in 2013
			11 45.31 in 2023

Average Temperature for 2023 = Numerous Days Missing August into September
 Normal Temperature for the Year at INV1 = 69.8°
 Normal Rainfall for the Year at INV1 = 52.39 inches

BROOKSVILLE AREA (Records began in January 1892):

Warmest Decembers	Coollest Decembers	Wettest Decembers	Driest Decembers
1 70.5 in 2015	1 47.9 in 2010	1 10.10 in 1997	1 0.01 in 1955
2 70.1 in 1931	2 53.9 in 1935	2 9.23 in 2018	2 0.04 in 2015
3 68.6 in 1971	3 54.3 in 2003	3 8.30 in 1930	3 0.08 in 2011
4 67.1 in 1948	4 54.4 in 1989	4 8.10 in 1953	4 0.21 in 1908
5 66.8 in 2021	5 54.7 in 2005	5 6.91 in 1925	5 0.27 in 1910
66.8 in 1926	54.7 in 1903	6 6.40 in 1969	6 0.32 in 1946
7 66.5 in 1932	7 54.8 in 1930	7 6.38 in 1983	0.32 in 1932
8 66.4 in 1982	8 54.9 in 1963	8 5.99 in 2002	8 0.33 in 1956
9 66.3 in 1940	9 55.3 in 1985	9 5.68 in 1973	9 0.37 in 1992
10 66.2 in 1933	10 55.4 in 1910	10 5.60 in 1905	0.37 in 1990
...	
46 62.0 in 2023	73 62.0 in 2023	26 4.20 in 2023	
62.0 in 1913	62.0 in 1913		

Normal Temperature for December at BKV = 60.3°

Normal Rainfall for December at BKV = 2.56 inches

Warmest Years	Coollest Years	Wettest Years	Driest Years
1 74.3 in 1927	1 67.9 in 2010	1 80.17 in 1959	1 35.63 in 2010
2 73.7 in 1929	2 68.7 in 1920	2 79.39 in 1912	2 36.58 in 2000
3 73.6 in 2015	3 69.4 in 2000	3 77.49 in 1960	3 37.46 in 1954
73.6 in 1933	4 69.5 in 2004	4 75.09 in 1945	4 37.83 in 1927
5 73.4 in 2020	5 69.6 in 2003	5 72.34 in 1982	5 38.08 in 1955
6 73.3 in 1948	6 69.7 in 2005	6 71.91 in 1928	6 38.20 in 1931
7 73.1 in 2023	7 69.9 in 1894	7 71.35 in 1964	7 39.62 in 2006
8 73.0 in 2019	8 70.0 in 2008	8 70.98 in 1995	8 40.48 in 1951
9 72.9 in 1949	9 70.1 in 1999	9 70.12 in 1906	9 40.70 in 1977
72.9 in 1939	70.1 in 1924	10 69.70 in 1983	10 41.10 in 1956
	
		85 49.58 in 2023	39 49.58 in 2023

Normal Temperature for the Year at BKV = 70.7°

Normal Rainfall for the Year at BKV = 51.94 inches

ST LEO (Records began in April 1895):

Warmest Decembers	Coollest Decembers	Wettest Decembers	Driest Decembers
1 70.6 in 2015	1 51.4 in 2010	1 13.99 in 1997	1 0.13 in 1984
2 69.6 in 1931	2 52.1 in 1935	2 10.68 in 2002	0.13 in 1906
3 68.0 in 2021	3 53.0 in 1930	3 9.17 in 2018	3 0.14 in 2016
4 67.7 in 2007	4 54.1 in 1903	4 7.50 in 1900	4 0.17 in 1933
5 67.6 in 1948	5 54.2 in 1910	5 7.43 in 1981	5 0.18 in 1938
6 67.5 in 2001	6 55.1 in 1917	6 6.83 in 1969	6 0.22 in 2011
67.5 in 1984	7 56.6 in 1989	7 6.47 in 1983	0.22 in 1990
8 67.3 in 2006	8 56.7 in 1909	8 6.16 in 1953	8 0.23 in 1932
9 67.2 in 1998	9 57.0 in 1960	9 5.99 in 1907	0.23 in 1908
10 66.9 in 1982	10 57.2 in 1927	10 5.67 in 1930	10 0.31 in 1928
...	57.2 in 1895	...	
...	...	22 4.07 in 2023	
49 62.4 in 2023	74 62.4 in 2023		
62.4 in 2013	62.4 in 2013		
62.4 in 1996	62.4 in 1996		

Normal Temperature for December at STLf1 = 62.1°
 Normal Rainfall for December at STLf1 = 2.53 inches

Warmest Years	Coollest Years	Wettest Years	Driest Years
1 74.5 in 1998	1 69.3 in 1930	1 81.93 in 1945	1 36.61 in 1961
2 74.4 in 1990	2 69.5 in 1920	2 80.06 in 1900	2 39.27 in 2000
74.4 in 1948	3 69.6 in 2010	3 79.57 in 1953	3 40.49 in 1932
4 74.1 in 1982	69.6 in 1910	4 75.57 in 1983	4 41.37 in 1955
5 73.9 in 2007	5 69.9 in 1931	5 75.34 in 1960	5 41.69 in 1908
6 73.8 in 2020	6 70.0 in 1928	6 72.45 in 1982	6 42.02 in 1990
7 73.7 in 2006	7 70.2 in 1903	7 71.29 in 2003	7 42.62 in 1952
73.7 in 1994	8 70.3 in 1968	8 70.41 in 1959	8 42.98 in 1980
73.7 in 1949	70.3 in 1940	9 69.85 in 1934	9 43.44 in 2006
10 73.6 in 2023	70.3 in 1917	10 69.68 in 2002	10 43.47 in 1967
73.6 in 1985			...
73.6 in 1946			25 47.21 in 2023

Normal Temperature for the Year at STLf1 = 71.9°
 Normal Rainfall for the Year at STLf1 = 53.46 inches

TARPON SPRINGS (Records began in January 1892):

Warmest Decembers	Coollest Decembers	Wettest Decembers	Driest Decembers
1 72.8 in 1931	1 50.9 in 2010	1 15.60 in 1997	1 0.02 in 1984
2 71.4 in 2015	2 53.1 in 1935	2 12.27 in 2002	2 0.12 in 2016
3 68.6 in 1971	3 53.3 in 1903	3 10.00 in 2018	3 0.14 in 1946
4 68.2 in 1998	4 53.6 in 1963	4 9.08 in 1983	4 0.17 in 1928
5 67.9 in 1982	5 55.0 in 1910	5 7.79 in 1969	5 0.19 in 2000
6 67.6 in 2016	6 55.6 in 1960	6 7.48 in 1973	6 0.20 in 1938
67.6 in 2001	55.6 in 1917	7 6.95 in 1953	7 0.25 in 1906
8 67.5 in 2021	8 55.9 in 1930	8 5.75 in 1930	8 0.28 in 1908
9 67.2 in 2007	9 56.3 in 1989	9 5.47 in 1989	9 0.31 in 2011
67.2 in 2006	10 56.5 in 2004	10 5.34 in 1907	10 0.35 in 1933
67.2 in 1992			

Average Temperature for Dec 2023 = Several Days Unrepresentative
 Normal Temperature for December at TRPF1 = 62.4°

Total Rainfall for Dec 2023 = Few Days Missing
 Normal Rainfall for December at TRPF1 = 2.74 inches

Warmest Years	Coollest Years	Wettest Years	Driest Years
1 74.9 in 2019	1 69.5 in 1895	1 83.20 in 1959	1 32.85 in 2007
2 74.8 in 1990	2 69.6 in 1910	2 77.78 in 1957	2 32.87 in 1956
3 74.7 in 1994	3 69.9 in 1963	3 74.81 in 1960	3 33.48 in 1927
4 74.6 in 2015	4 70.0 in 1940	4 73.83 in 1983	4 35.39 in 1952
5 74.4 in 2017	5 70.1 in 1892	5 68.67 in 2012	5 36.66 in 2003
74.4 in 1997	6 70.2 in 1968	6 67.64 in 1969	6 38.21 in 1967
74.4 in 1991	70.2 in 1896	7 67.43 in 2019	7 38.65 in 1907
8 74.2 in 1998	8 70.3 in 2010	8 67.00 in 1925	8 39.65 in 1902
9 74.1 in 1932	70.3 in 1969	9 66.98 in 1900	9 40.15 in 1908
10 74.0 in 2018	10 70.5 in 1958	10 66.61 in 1997	10 40.50 in 1976
74.0 in 1995	70.5 in 1904		
74.0 in 1927			
74.0 in 1922			

Average Temperature for 2023 = Numerous Days Unrepresentative
 Normal Temperature for the Year at TRPF1 = 72.9°

Total Rainfall for 2023 = Few Days Missing
 Normal Rainfall for the Year at TRPF1 = 54.29 inches

TAMPA AREA (Records began in April 1890):

Warmest Decembers	Coollest Decembers	Wettest Decembers	Driest Decembers
1 73.4 in 2015	1 53.2 in 2010	1 15.57 in 1997	1 0.07 in 1984
2 72.3 in 1931	2 54.5 in 1935	2 14.10 in 2002	2 0.09 in 1946
3 71.5 in 2021	3 54.9 in 1963	3 8.69 in 2018	0.09 in 1906
4 70.1 in 2016	4 55.5 in 1910	4 7.36 in 1907	4 0.13 in 1933
5 69.5 in 2006	5 55.8 in 1903	5 7.04 in 1941	5 0.19 in 2011
6 69.3 in 1971	6 56.1 in 1989	6 6.66 in 1950	0.19 in 1990
7 68.8 in 2001	7 56.7 in 1930	7 5.99 in 1930	7 0.20 in 1944
8 68.5 in 2013	8 56.8 in 1917	8 5.52 in 1973	8 0.21 in 1956
9 68.4 in 2007	9 57.5 in 1980	9 5.17 in 1969	9 0.29 in 1938
10 68.0 in 1998	57.5 in 1909	10 5.14 in 1905	10 0.30 in 1949
68.0 in 1948		11 4.93 in 1914	
...	...	12 4.72 in 1989	
41 64.9 in 2023	92 64.9 in 2023	13 4.71 in 1983	
64.9 in 2014	64.9 in 2014	14 4.59 in 2023	
64.9 in 1936	64.9 in 1936		

Normal Temperature for December at TPA = 64.9°

Normal Rainfall for December at TPA = 2.56 inches

Warmest Years	Coollest Years	Wettest Years	Driest Years
1 76.4 in 2023	1 69.8 in 1968	1 76.57 in 1959	1 28.89 in 1956
76.4 in 2022	2 70.1 in 1901	2 70.43 in 1957	2 29.85 in 2000
3 76.3 in 2020	3 70.3 in 1910	3 67.71 in 1997	3 31.47 in 1977
76.3 in 2017	4 70.4 in 1981	4 67.19 in 1912	4 32.25 in 1908
5 76.2 in 2015	5 70.5 in 1969	5 66.93 in 1894	5 32.31 in 1984
6 76.1 in 2021	6 71.0 in 1976	6 66.65 in 1945	6 33.90 in 1974
7 75.8 in 2019	71.0 in 1966	7 66.46 in 1979	7 34.32 in 1999
8 75.6 in 2018	71.0 in 1940	8 65.95 in 1947	8 34.39 in 1990
9 75.3 in 1990	71.0 in 1895	9 65.44 in 1960	9 34.77 in 1927
10 75.2 in 2016	71.0 in 1892	10 63.82 in 1899	10 34.87 in 1944
			11 34.98 in 1992
			12 35.04 in 1961
			13 35.81 in 1918
			14 36.05 in 1966
			15 37.08 in 1923
			16 37.15 in 2023

Normal Temperature for the Year at TPA = 74.5°

Normal Rainfall for the Year at TPA = 49.48 inches

ST PETERSBURG AREA (Records began in August 1914):

Warmest Decembers	Coollest Decembers	Wettest Decembers	Driest Decembers
1 74.2 in 1931	1 56.4 in 2010	1 17.41 in 2002	1 0.07 in 1984
2 71.9 in 1971	2 56.7 in 1989	2 14.62 in 1997	2 0.14 in 1949
3 71.0 in 2021	3 56.9 in 1935	3 7.00 in 1983	0.14 in 1938
4 70.6 in 2015	4 57.1 in 1963	4 6.77 in 1973	4 0.24 in 1990
5 69.7 in 1998	5 58.7 in 1930	5 6.67 in 1930	5 0.28 in 2016
6 69.5 in 2016	6 58.8 in 1917	6 6.45 in 1969	6 0.38 in 2015
69.5 in 1948	7 59.2 in 1962	7 6.03 in 1914	7 0.41 in 1924
8 69.4 in 2013	8 59.6 in 1950	8 5.92 in 1953	8 0.43 in 1932
9 69.3 in 2007	9 60.0 in 1954	9 5.84 in 2018	9 0.44 in 1946
10 69.2 in 2001	10 60.4 in 1944	10 5.49 in 1950	10 0.45 in 2011
...	
51 64.4 in 2023	57 64.4 in 2023	26 3.48 in 2023	

Normal Temperature for December at SPG = 65.1°

Normal Rainfall for December at SPG = 2.39 inches

Warmest Years	Coollest Years	Wettest Years	Driest Years
1 76.4 in 2020	1 71.8 in 1940	1 87.62 in 1959	1 30.41 in 1984
76.4 in 2015	2 72.3 in 1920	2 79.30 in 1953	2 32.57 in 1966
3 76.3 in 2023	3 72.4 in 1968	3 73.88 in 1957	3 33.54 in 2006
4 76.1 in 2017	72.4 in 1963	4 72.81 in 1997	4 33.63 in 2023
5 76.0 in 2021	5 72.5 in 1996	5 72.59 in 1947	5 34.01 in 1927
76.0 in 2003	6 72.6 in 1917	6 70.12 in 1954	6 34.88 in 1956
7 75.7 in 2005	7 72.7 in 1966	7 69.66 in 1988	7 36.34 in 1944
8 75.6 in 1946	72.7 in 1954	8 67.23 in 1922	8 36.40 in 2021
9 75.5 in 2012	72.7 in 1915	9 65.00 in 1952	9 36.52 in 2007
75.5 in 1972	10 72.8 in 1983	10 64.87 in 1995	10 36.62 in 1923
75.5 in 1933			
75.5 in 1932			

Normal Temperature for the Year at SPG = 74.7°

Normal Rainfall for the Year at SPG = 46.65 inches

PLANT CITY (Records began in September 1892):

Warmest Decembers	Coollest Decembers	Wettest Decembers	Driest Decembers
1 73.0 in 2015	1 51.1 in 1935	1 14.75 in 1997	1 0.00 in 1908
2 70.6 in 1971	2 53.0 in 2010	2 9.63 in 2002	2 0.05 in 1906
3 70.5 in 2016	3 54.0 in 1930	3 7.94 in 2018	3 0.21 in 1932
4 69.7 in 2021	4 54.1 in 1910	4 7.62 in 1905	4 0.22 in 1984
5 69.6 in 1931	5 56.0 in 1989	5 6.57 in 1983	5 0.26 in 1987
6 68.9 in 1948	6 56.1 in 1963	6 6.47 in 1925	0.26 in 1917
7 68.4 in 2013	7 56.2 in 1903	7 6.14 in 1969	7 0.28 in 2016
8 67.9 in 1978	8 57.2 in 1915	8 6.06 in 1907	0.28 in 1962
9 67.7 in 2007	9 57.3 in 1901	9 6.04 in 1930	9 0.30 in 1933
10 67.6 in 1998	10 57.5 in 1917	10 5.80 in 1941	10 0.32 in 1956
...	
31 65.1 in 2023	87 65.1 in 2023	30 3.22 in 2023	
65.1 in 2023	65.1 in 2023		

Normal Temperature for December at PLCF1 = 65.0°
 Normal Rainfall for December at PLCF1 = 2.54 inches

Warmest Years	Coollest Years	Wettest Years	Driest Years
1 76.9 in 2023	1 69.2 in 1930	1 86.68 in 1959	1 32.96 in 1961
2 76.6 in 2020	2 69.4 in 1931	2 79.20 in 1947	2 36.36 in 1909
76.6 in 2019	3 69.8 in 1940	3 78.25 in 1960	3 37.24 in 1956
4 75.8 in 2021	4 70.4 in 1928	4 76.88 in 2004	4 39.17 in 1977
5 75.7 in 2022	5 70.6 in 1942	5 75.82 in 1953	5 39.29 in 2007
6 75.3 in 2015	70.6 in 1935	6 71.97 in 1983	6 39.48 in 1981
7 75.0 in 2016	7 70.8 in 2010	7 71.76 in 1933	7 39.74 in 1990
8 74.9 in 2018	70.8 in 1926	8 70.65 in 1957	8 40.41 in 1927
9 74.2 in 1948	9 70.9 in 1976	9 69.35 in 1905	9 40.49 in 1908
10 74.1 in 1990	70.9 in 1932	10 68.88 in 2018	10 42.38 in 2000
74.1 in 1911	
		72 51.50 in 2023	45 51.50 in 2023

Normal Temperature for the Year at PLCF1 = 74.3°
 Normal Rainfall for the Year at PLCF1 = 56.11 inches

LAKELAND AREA (Records began in January 1915):

Warmest Decembers	Coollest Decembers	Wettest Decembers	Driest Decembers
1 73.1 in 2015	1 53.2 in 2010	1 12.28 in 1997	1 Trace in 1917
2 72.8 in 1931	2 54.8 in 1935	2 11.74 in 2002	2 0.09 in 1944
3 70.2 in 2016	3 56.2 in 1963	3 8.13 in 2018	3 0.10 in 1924
4 70.0 in 1971	4 56.8 in 1989	4 7.04 in 1983	4 0.12 in 1938
5 69.1 in 2021	5 57.3 in 1960	5 6.15 in 1930	5 0.14 in 1962
6 68.6 in 2013	6 57.9 in 1930	6 6.09 in 1925	6 0.17 in 1987
7 68.4 in 2007	7 58.2 in 1950	7 5.51 in 1989	7 0.30 in 1932
8 68.0 in 1922	8 58.4 in 1954	8 5.33 in 1941	8 0.34 in 1984
9 67.9 in 2001	9 58.9 in 1980	9 5.21 in 1949	9 0.35 in 1990
10 67.8 in 1998	10 59.0 in 1969	10 4.53 in 1950	10 0.36 in 1943
...	59.0 in 1944		0.36 in 1933
...	
39 65.0 in 2023	71 65.0 in 2023	29 2.91 in 2023	
		2.91 in 1985	

Normal Temperature for December at LLDF1 = 64.8°
 Normal Rainfall for December at LLDF1 = 2.61 inches

Warmest Years	Coollest Years	Wettest Years	Driest Years
1 76.0 in 2023	1 70.6 in 1968	1 78.15 in 2018	1 34.93 in 1927
2 75.7 in 2020	2 70.9 in 1969	2 70.24 in 1959	2 35.83 in 1961
75.7 in 2015	3 71.0 in 1966	3 69.72 in 1979	3 36.30 in 1954
4 75.6 in 2019	71.0 in 1958	4 68.82 in 2017	4 37.36 in 1985
75.6 in 1990	71.0 in 1940	5 67.13 in 1994	5 37.80 in 1967
6 75.3 in 2021	6 71.2 in 1970	6 66.92 in 2005	6 38.06 in 1962
7 75.2 in 2017	7 71.4 in 1960	7 66.58 in 2002	7 38.26 in 2000
75.2 in 1994	71.4 in 1920	8 66.13 in 2004	8 38.29 in 1972
9 75.0 in 2022	9 71.5 in 1963	9 65.42 in 1960	9 39.43 in 1990
10 74.8 in 2016	10 71.6 in 2010	10 63.79 in 1919	10 39.57 in 1984
74.8 in 1991			39.57 in 1981
			39.57 in 1942
	
		60 50.34 in 2023	39 50.34 in 2023

Normal Temperature for the Year at LLDF1 = 73.9°
 Normal Rainfall for the Year at LLDF1 = 56.82 inches

WINTER HAVEN AREA (Records began in March 1941):

Warmest Decembers	Coollest Decembers	Wettest Decembers	Driest Decembers
1 72.4 in 2015	1 52.7 in 2010	1 12.52 in 2002	1 0.03 in 1987
2 70.8 in 1971	2 55.5 in 1963	2 9.79 in 1997	0.03 in 1984
3 70.3 in 2021	3 57.4 in 1989	3 6.91 in 2018	3 0.07 in 1990
4 69.5 in 1948	4 59.1 in 1962	4 6.44 in 1983	4 0.21 in 1956
5 69.2 in 2016	59.1 in 1960	5 5.35 in 1989	5 0.23 in 1962
6 68.4 in 1946	6 59.2 in 1968	6 4.75 in 1991	6 0.29 in 1944
7 68.1 in 1984	7 59.3 in 1950	7 3.88 in 1947	7 0.33 in 2011
8 68.0 in 2007	8 59.8 in 1944	8 3.87 in 1950	8 0.40 in 1991
68.0 in 1991	9 59.9 in 2000	9 3.77 in 1941	0.40 in 1968
68.0 in 1986	10 60.1 in 2003	10 3.63 in 1969	10 0.47 in 1943
...	60.1 in 1952	...	
...	...	19 2.74 in 2023	
39 64.2 in 2023	32 64.2 in 2023		
64.2 in 1987	64.2 in 1987		

Normal Temperature for December at GIF = 64.6°

Normal Rainfall for December at GIF = 2.68 inches

Warmest Years	Coollest Years	Wettest Years	Driest Years
1 76.6 in 2019	1 70.2 in 1968	1 73.28 in 1959	1 30.35 in 2000
2 76.2 in 2015	2 71.1 in 1981	2 69.61 in 1960	2 31.95 in 2006
3 76.1 in 2020	3 71.2 in 1963	3 65.94 in 1957	3 32.73 in 2009
4 75.8 in 1989	4 71.4 in 1977	4 65.09 in 1947	4 35.26 in 1985
5 75.7 in 1991	71.4 in 1969	5 64.90 in 1948	5 36.78 in 2007
6 75.4 in 2023	6 71.6 in 2010	6 63.55 in 1953	6 36.89 in 1980
7 75.3 in 2021	71.6 in 1958	7 62.94 in 1983	7 39.02 in 2021
8 75.1 in 2018	8 71.9 in 1962	8 62.73 in 1994	8 39.06 in 2017
75.1 in 2017	71.9 in 1960	9 62.10 in 1982	9 39.51 in 1972
10 75.0 in 1990	10 72.0 in 1966	10 61.77 in 2002	10 39.81 in 1961
	
		41 46.40 in 2023	26 46.40 in 2023

Normal Temperature for the Year at GIF = 74.6°

Normal Rainfall for the Year at GIF = 46.12 inches

BARTOW (Records began in June 1892):

Warmest Decembers		Coolest Decembers		Wettest Decembers		Driest Decembers	
1	72.4 in 2015	1	53.2 in 2010	1	13.31 in 2002	1	0.00 in 1906
2	71.0 in 2013	2	54.1 in 1910	2	11.38 in 1983	2	0.05 in 1932
3	69.2 in 1948	3	54.4 in 1903	3	10.70 in 1997	3	0.08 in 1933
4	69.0 in 2016	4	55.9 in 1915	4	8.25 in 1905	4	0.15 in 1944
	69.0 in 2001	5	57.1 in 1909	5	6.45 in 2018	5	0.23 in 1962
	69.0 in 1971	6	57.3 in 1963	6	6.35 in 1900	6	0.24 in 1987
7	68.5 in 2021	7	57.4 in 1954	7	5.50 in 1925		0.24 in 1956
8	68.4 in 1998	8	57.6 in 1989	8	5.25 in 1942	8	0.27 in 1990
9	68.2 in 2006	9	58.4 in 1960	9	5.14 in 1930	9	0.28 in 1984
10	67.8 in 1986	10	59.0 in 2020	10	5.07 in 1989	10	0.29 in 1946
...				
35	64.0 in 2023	52	64.0 in 2023	39	2.53 in 2023	91	2.53 in 2023
					2.53 in 2023		2.53 in 2023

Normal Temperature for December at BARF1 = 63.6°
 Normal Rainfall for December at BARF1 = 2.16 inches

Warmest Years		Coolest Years		Wettest Years		Driest Years	
1	74.9 in 1998	1	70.8 in 1901	1	83.44 in 1959	1	34.10 in 2007
2	74.8 in 2023	2	71.2 in 1968	2	77.99 in 1983	2	35.87 in 2000
3	74.6 in 2020		71.2 in 1914	3	73.96 in 1930	3	36.43 in 1927
	74.6 in 2012	4	71.3 in 1896	4	73.85 in 1960	4	37.19 in 1950
5	74.5 in 2019	5	71.5 in 1893	5	73.72 in 1957	5	37.51 in 2006
6	74.4 in 2017	6	71.6 in 1976	6	73.58 in 1947	6	40.72 in 1990
7	74.1 in 2021		71.6 in 1970	7	71.44 in 2002	7	41.00 in 1916
	74.1 in 1997		71.6 in 1963	8	71.29 in 1924	8	41.41 in 1955
	74.1 in 1982		71.6 in 1913	9	69.90 in 1903	9	42.29 in 1999
10	74.0 in 2022	10	71.9 in 1981	10	68.74 in 2022	10	42.48 in 1974
			71.9 in 1979	
			71.9 in 1956	88	47.92 in 2023	32	47.92 in 2023
			71.9 in 1912				

Normal Temperature for the Year at BARF1 = 73.1°
 Normal Rainfall for the Year at BARF1 = 50.88 inches

SARASOTA-BRADENTON AREA (Records began in January 1911):

Warmest Decembers	Coollest Decembers	Wettest Decembers	Driest Decembers
1 72.8 in 2015	1 53.0 in 2010	1 11.94 in 1997	1 0.00 in 1933
2 71.2 in 1931	2 54.9 in 1935	2 11.63 in 2002	2 0.03 in 1949
3 69.8 in 1971	3 56.8 in 1930	3 8.10 in 2018	3 0.17 in 2011
4 69.5 in 2006	4 57.4 in 1963	4 6.86 in 1914	4 0.19 in 1962
5 69.3 in 2021	5 58.0 in 1917	5 6.71 in 1977	5 0.21 in 2013
69.3 in 2016	6 58.4 in 1915	6 6.23 in 1983	6 0.24 in 1984
7 69.1 in 2013	7 58.7 in 1989	7 6.21 in 1930	7 0.28 in 1923
8 68.8 in 2007	58.7 in 1976	8 5.80 in 1958	8 0.31 in 1938
9 68.7 in 2019	9 59.0 in 1944	9 5.72 in 1913	9 0.34 in 1946
10 68.6 in 1948	10 59.4 in 1985	10 5.58 in 1953	10 0.36 in 1932
...	59.4 in 1980	...	
19 66.4 in 2023		20 3.62 in 2023	
66.4 in 1972			

Normal Temperature for December at SRQ = 65.2°

Normal Rainfall for December at SRQ = 2.33 inches

Warmest Years	Coollest Years	Wettest Years	Driest Years
1 76.3 in 2020	1 70.6 in 1977	1 82.98 in 1957	1 27.13 in 2023
2 76.2 in 2019	70.6 in 1976	2 78.59 in 1959	2 29.45 in 1944
3 76.1 in 2023	70.6 in 1940	3 78.33 in 1997	3 31.98 in 1956
4 75.3 in 2016	4 70.9 in 2010	4 77.50 in 1912	4 32.19 in 1951
5 75.2 in 2015	70.9 in 1981	5 73.49 in 1960	5 33.23 in 2009
75.2 in 1990	70.9 in 1968	6 72.21 in 1922	6 34.00 in 1923
7 74.8 in 2021	70.9 in 1930	7 68.52 in 1943	7 34.32 in 2008
8 74.7 in 2022	8 71.0 in 1931	8 68.02 in 1983	8 36.97 in 1950
9 74.6 in 2017	71.0 in 1915	9 67.46 in 1958	9 37.45 in 2000
10 74.5 in 1994	10 71.1 in 1928	10 67.01 in 1928	10 38.87 in 1973

Normal Temperature for the Year at SRQ = 74.1°

Normal Rainfall for the Year at SRQ = 49.05 inches

VENICE (Records began in May 1955):

Warmest Decembers	Coollest Decembers	Wettest Decembers	Driest Decembers
1 73.1 in 1987	1 54.8 in 2010	1 9.48 in 1997	1 0.04 in 2016
2 72.9 in 2015	2 57.7 in 1989	2 7.39 in 2018	2 0.07 in 2011
3 70.9 in 1971	3 57.9 in 1963	3 6.50 in 1983	3 0.10 in 2014
4 70.7 in 2016	4 59.4 in 1976	4 6.00 in 2002	4 0.13 in 2013
5 70.2 in 2021	59.4 in 1960	5 5.34 in 2009	0.13 in 1991
6 69.3 in 1998	6 59.7 in 1981	6 5.25 in 1986	6 0.18 in 1987
7 69.1 in 2011	7 60.1 in 2003	7 4.94 in 2003	7 0.33 in 1962
8 68.6 in 1982	60.1 in 1962	8 4.16 in 1958	8 0.44 in 1984
9 68.3 in 2006	9 60.2 in 1975	9 4.12 in 1989	9 0.50 in 2021
10 68.2 in 2001	10 60.5 in 1973	10 3.85 in 1979	10 0.60 in 2001
...		11 3.82 in 1977	
25 65.6 in 2023		12 3.47 in 1969	
65.6 in 2014		13 3.35 in 2004	
65.6 in 1956		14 3.27 in 2023	

Normal Temperature for December at VNCF1 = 64.9°

Normal Rainfall for December at VNCF1 = 2.31 inches

Warmest Years	Coollest Years	Wettest Years	Driest Years
1 76.3 in 2023	1 70.9 in 1981	1 75.08 in 1995	1 29.07 in 1990
2 76.0 in 2012	2 71.2 in 1977	2 74.15 in 1957	2 29.72 in 2023
3 75.9 in 2095	3 71.8 in 1962	3 73.28 in 1959	3 32.46 in 2007
4 75.7 in 2015	4 71.9 in 1978	4 72.40 in 1983	4 35.52 in 1985
75.7 in 1998	5 72.0 in 1969	5 65.46 in 2003	5 36.50 in 1961
6 75.6 in 2011	72.0 in 1960	6 63.35 in 2005	6 36.69 in 1956
7 75.3 in 2020	7 72.1 in 1966	7 63.13 in 1992	7 37.23 in 1981
8 75.1 in 1997	72.1 in 1963	8 62.98 in 1969	8 38.45 in 2021
75.1 in 1994	72.1 in 1956	9 61.25 in 2017	9 38.50 in 2009
10 75.0 in 2017	10 72.3 in 1970	10 59.17 in 1982	10 39.49 in 2019

Normal Temperature for the Year at VNCF1 = 73.7°

Normal Rainfall for the Year at VNCF1 = 51.27 inches

MYAKKA RIVER STATE PARK (Temperature records began in March 1956
and Rainfall records began in Sep 1943):

Warmest Decembers	Coolest Decembers	Wettest Decembers	Driest Decembers
1 73.3 in 2015	1 53.4 in 2010	1 10.89 in 1997	1 0.03 in 1949
2 70.8 in 2016	2 55.9 in 1969	2 9.65 in 2002	2 0.10 in 1991
3 69.4 in 2013	3 57.0 in 1989	3 8.20 in 1983	3 0.16 in 1961
4 69.3 in 1998	4 57.2 in 1960	4 7.59 in 2018	4 0.17 in 2011
5 69.2 in 1971	5 57.3 in 1962	5 6.32 in 1958	5 0.19 in 1987
6 69.1 in 2006	6 58.7 in 1968	6 6.06 in 2009	6 0.22 in 2013
7 68.7 in 2007	7 59.1 in 1957	7 5.97 in 1977	0.22 in 1962
8 68.1 in 1982	8 59.9 in 2002	8 5.48 in 2003	8 0.25 in 1956
9 68.0 in 1991	9 60.0 in 2020	9 5.00 in 2015	9 0.29 in 1943
10 67.9 in 1992	60.0 in 1973	10 4.23 in 1989	10 0.36 in 1984
67.9 in 1986		...	
...	...	22 2.77 in 2023	
30 63.8 in 2023	27 63.8 in 2023		
63.8 in 1999	63.8 in 1999		

Normal Temperature for December at MKCF1 = 64.8°
Normal Rainfall for December at MKCF1 = 2.51 inches

Warmest Years	Coolest Years	Wettest Years	Driest Years
1 76.0 in 2015	1 70.6 in 1962	1 82.31 in 1995	1 36.97 in 1961
2 75.5 in 2019	2 71.3 in 1958	2 80.36 in 1983	2 38.15 in 1956
3 75.2 in 1997	3 71.6 in 1970	3 78.82 in 2018	3 38.24 in 1955
4 75.0 in 1990	71.6 in 1960	4 77.59 in 1959	4 39.15 in 1944
5 74.8 in 1982	5 71.8 in 2010	5 76.72 in 1982	5 42.29 in 1950
6 74.6 in 2016	71.8 in 1977	6 76.60 in 2003	6 42.54 in 1946
74.6 in 1994	7 72.1 in 1981	7 76.52 in 1998	7 44.03 in 1985
8 74.5 in 2018	72.1 in 1976	8 76.04 in 1997	8 44.10 in 1986
74.5 in 1999	72.1 in 1973	9 75.62 in 1957	9 44.36 in 2021
10 74.1 in 2023	10 72.2 in 1988	10 71.72 in 2017	10 45.21 in 2000
74.1 in 2013			...
			18 47.62 in 2023

Normal Temperature for the Year at MKCF1 = 73.6°
Normal Rainfall for the Year at MKCF1 = 61.07 inches

WAUCHULA 2 N (Records began in January 1933):

Warmest Decembers		Coolest Decembers		Wettest Decembers		Driest Decembers	
1	72.0 in 2015	1	50.0 in 2010	1	7.89 in 2002	1	0.00 in 2001
2	70.0 in 1971	2	54.4 in 2009	2	6.29 in 1997	2	0.11 in 1938
3	69.8 in 2007	3	55.7 in 1935	3	6.10 in 2018	3	0.12 in 1956
4	68.7 in 2016	4	56.8 in 1963	4	5.57 in 2009	4	0.14 in 1933
	68.7 in 1948	5	57.0 in 2003	5	5.51 in 1986	5	0.20 in 2011
6	68.4 in 1940	6	58.5 in 1989	6	4.83 in 1977	6	0.21 in 1934
7	67.8 in 2006	7	58.6 in 2020	7	4.77 in 1958	7	0.22 in 2013
8	67.7 in 1986		58.6 in 2002	8	4.20 in 1940	8	0.28 in 1991
9	67.6 in 1946		58.6 in 1954	9	4.13 in 1950	9	0.31 in 2014
10	67.5 in 1941	10	58.7 in 2005	10	4.11 in 1989		0.31 in 1949
...				
40	63.6 in 2023	45	63.6 in 2023	18	2.78 in 2023		
	63.6 in 2011		63.6 in 2011				
	63.6 in 1934		63.6 in 1934				

Normal Temperature for December at WAUF1 = 63.0°
 Normal Rainfall for December at WAUF1 = 2.13 inches

Warmest Years		Coolest Years		Wettest Years		Driest Years	
1	74.9 in 1990	1	70.8 in 1996	1	83.48 in 1953	1	29.56 in 2000
2	74.5 in 2008	2	70.9 in 2014	2	82.10 in 1947	2	36.59 in 2007
	74.5 in 1948	3	71.3 in 1954	3	69.13 in 1959	3	36.66 in 1981
4	74.4 in 2015	4	71.4 in 1981	4	68.89 in 1939	4	36.93 in 1961
5	74.3 in 1991		71.4 in 1968	5	67.34 in 1983	5	40.25 in 1989
	74.3 in 1933		71.4 in 1956	6	66.05 in 1998	6	40.27 in 1999
7	74.2 in 2009	7	71.5 in 2012	7	65.77 in 1997	7	41.39 in 2006
8	74.1 in 2023		71.5 in 2011	8	64.59 in 2022	8	42.06 in 1967
	74.1 in 1989	9	71.6 in 1976	9	63.91 in 1960	9	43.58 in 1950
10	74.0 in 2019	10	71.7 in 2013	10	62.98 in 1943	10	43.63 in 2023
			71.7 in 1999				
			71.7 in 1940				

Normal Temperature for the Year at WAUF1 = 72.4°
 Normal Rainfall for the Year at WAUF1 = 52.00 inches

ARCHBOLD BIO STN (Records began in January 1969):

Warmest Decembers	Coollest Decembers	Wettest Decembers	Driest Decembers
1 73.4 in 2015	1 52.1 in 2010	1 7.60 in 1997	1 0.22 in 1981
2 70.5 in 2016	2 56.3 in 1989	2 6.22 in 2002	2 0.27 in 2005
3 69.1 in 1971	3 57.8 in 1969	3 4.90 in 1977	3 0.31 in 1970
4 69.0 in 2006	4 59.1 in 2003	4 4.16 in 1978	4 0.38 in 2000
5 68.4 in 2013	5 59.2 in 1980	5 3.91 in 2023	5 0.40 in 2021
6 67.3 in 2021	6 59.4 in 1993	6 3.83 in 1994	6 0.42 in 2013
7 67.2 in 1986	7 60.1 in 1985	7 3.75 in 2003	7 0.43 in 2011
8 67.0 in 2007	8 60.3 in 2020	8 3.35 in 1986	8 0.51 in 1982
9 66.7 in 1998	9 60.5 in 2005	9 3.10 in 2020	9 0.54 in 2016
10 66.3 in 1978	60.5 in 2002	10 3.04 in 2015	10 0.55 in 2001
...	...		
21 64.6 in 2023	35 64.6 in 2023		

Normal Temperature for December at ACHF1 = 64.4°
 Normal Rainfall for December at ACHF1 = 2.03 inches

Warmest Years	Coollest Years	Wettest Years	Driest Years
1 75.4 in 2015	1 70.1 in 2010	1 72.61 in 2002	1 27.31 in 2000
2 74.4 in 2023	2 70.6 in 1981	2 66.06 in 2004	2 33.00 in 2007
3 74.3 in 2020	3 70.7 in 1983	3 64.09 in 1969	3 36.26 in 1980
74.3 in 2017	4 71.0 in 1970	4 63.49 in 2013	4 37.46 in 2009
5 74.1 in 2019	71.0 in 1969	5 62.23 in 1992	5 41.45 in 1971
6 74.0 in 1990	6 71.1 in 2000	6 61.73 in 2015	6 43.02 in 1975
7 73.9 in 2022	71.1 in 1988	7 61.07 in 1982	7 43.84 in 1996
73.9 in 2016	71.1 in 1984	8 60.94 in 2023	8 43.97 in 1985
9 73.7 in 1991	9 71.2 in 1996	9 60.89 in 1979	9 45.03 in 1981
73.7 in 1975	10 71.3 in 1987	10 60.33 in 2001	10 45.06 in 1972
	71.3 in 1977		
	71.3 in 1976		

Normal Temperature for the Year at ACHF1 = 72.9°
 Normal Rainfall for the Year at ACHF1 = 54.23 inches

PUNTA GORDA AREA (Records began in May 1914):

Warmest Decembers	Coollest Decembers	Wettest Decembers	Driest Decembers
1 72.8 in 2015	1 54.0 in 2010	1 6.88 in 2002	1 0.00 in 1933
2 72.5 in 1931	2 57.6 in 1935	2 6.50 in 1925	2 0.07 in 1938
3 71.4 in 1948	3 58.0 in 1963	3 6.47 in 1997	3 0.09 in 1926
4 70.4 in 2013	4 58.4 in 1917	4 5.42 in 1995	4 0.12 in 1932
70.4 in 1971	5 59.9 in 2003	5 4.95 in 1958	5 0.15 in 2014
70.4 in 1946	6 60.1 in 1989	6 4.92 in 1977	6 0.17 in 2011
7 70.0 in 2021	60.1 in 1969	7 4.63 in 2009	7 0.25 in 1981
70.0 in 2016	8 60.3 in 1968	8 4.49 in 1967	8 0.27 in 1928
70.0 in 1932	9 60.6 in 1975	9 4.44 in 2023	9 0.28 in 1991
10 69.7 in 1951	10 60.7 in 1930	10 4.31 in 1969	10 0.34 in 2000
	60.7 in 1915		0.34 in 1962
...	...		
38 66.9 in 2023	65 66.9 in 2023		
66.9 in 1994	66.9 in 1994		
66.9 in 1990	66.9 in 1990		
66.9 in 1972	66.9 in 1972		

Normal Temperature for December at PGD = 65.8°
 Normal Rainfall for December at PGD = 1.99 inches

Warmest Years	Coollest Years	Wettest Years	Driest Years
1 76.8 in 1948	1 71.5 in 1968	1 88.10 in 1947	1 30.01 in 2007
2 76.7 in 2023	2 71.6 in 2010	2 87.09 in 1959	2 30.07 in 1927
3 76.4 in 1946	3 71.8 in 1969	3 81.06 in 1995	3 32.85 in 1990
4 75.9 in 2020	71.8 in 1915	4 65.33 in 1922	4 35.07 in 1955
5 75.8 in 1949	5 71.9 in 1976	5 64.87 in 2003	5 36.18 in 2000
6 75.6 in 2018	71.9 in 1970	6 64.43 in 1983	6 36.87 in 1976
75.6 in 1990	7 72.3 in 1940	7 63.97 in 1928	7 37.41 in 1923
75.6 in 1945	8 72.4 in 1977	8 63.30 in 2018	8 38.03 in 1920
9 75.5 in 2015	9 72.6 in 1942	9 62.41 in 2016	9 38.11 in 1971
10 75.4 in 2022	10 72.7 in 1930	10 62.02 in 1958	10 39.17 in 1956
75.4 in 2021	
		64 48.65 in 2023	30 48.65 in 2023

Normal Temperature for the Year at PGD = 74.3°
 Normal Rainfall for the Year at PGD = 52.97 inches

FORT MYERS AREA (Records began in January 1902):

Warmest Decembers	Coollest Decembers	Wettest Decembers	Driest Decembers
1 73.6 in 2015	1 56.7 in 2010	1 7.04 in 1925	1 Trace in 1956
2 73.3 in 2016	2 58.4 in 1935	2 6.21 in 1905	2 0.01 in 1924
3 72.8 in 1931	3 58.5 in 1903	3 5.71 in 2019	3 0.02 in 1984
4 72.6 in 2021	4 58.8 in 1910	4 5.46 in 1997	0.02 in 1906
5 72.3 in 1971	5 59.3 in 1963	5 5.42 in 1940	5 0.05 in 2014
6 71.5 in 2013	6 60.3 in 1950	6 5.26 in 1986	6 0.09 in 2005
7 71.2 in 2007	7 60.5 in 1954	7 5.16 in 1979	7 0.13 in 1933
8 70.9 in 2006	8 60.8 in 1989	8 4.68 in 2003	8 0.14 in 1951
9 70.7 in 2019	9 61.0 in 1969	9 4.35 in 1978	9 0.15 in 1926
10 70.5 in 1948	61.0 in 1930	10 4.18 in 2023	10 0.16 in 1968
...	...		
48 67.4 in 2023	73 67.4 in 2023		

Normal Temperature for December at FMY = 67.3°

Normal Rainfall for December at FMY = 1.90 inches

Warmest Years	Coollest Years	Wettest Years	Driest Years
1 78.0 in 2023	1 71.2 in 1910	1 80.17 in 1947	1 32.83 in 1964
2 77.6 in 2022	2 71.8 in 1903	2 77.35 in 1922	2 32.85 in 1927
3 77.1 in 2020	3 72.1 in 1904	3 74.85 in 1983	3 33.93 in 1944
4 77.0 in 2015	4 72.3 in 1958	4 74.75 in 1912	4 35.00 in 1988
77.0 in 1990	72.3 in 1902	5 74.46 in 2005	5 36.19 in 1950
6 76.9 in 2021	6 72.4 in 1977	6 73.14 in 1995	6 38.50 in 1907
7 76.8 in 2019	72.4 in 1917	7 72.70 in 2022	7 39.88 in 2009
8 76.6 in 1994	8 72.5 in 1976	8 71.94 in 1969	8 41.68 in 1918
9 76.4 in 1991	72.5 in 1906	9 70.64 in 2003	9 41.72 in 1938
10 76.2 in 2018	10 72.8 in 1983	10 70.29 in 1968	10 42.32 in 2014
76.2 in 2012	72.8 in 1969		...
	72.8 in 1940		26 47.12 in 2023*
	72.8 in 1909		

Normal Temperature for the Year at FMY = 75.4°

Normal Rainfall for the Year at FMY = 57.41 inches

* Rainfall was missing on June 2, 2023, radar approximation of 1.90 inches is not included in this total

For more Climate information visit our web site at the following link:
<https://www.weather.gov/tampabay> and then go to the Climate and Past Weather drop down menu above the graphical forecast images.