

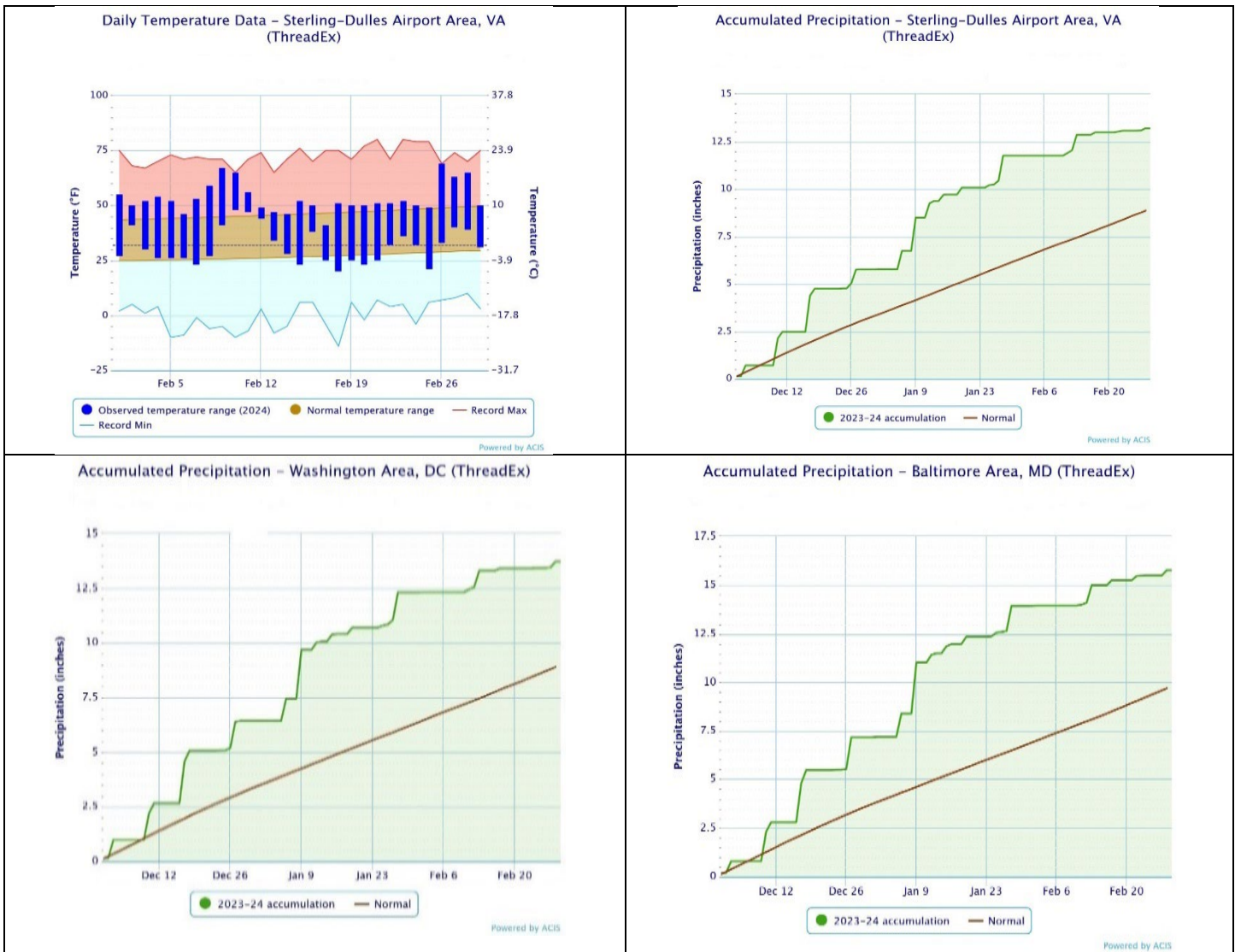


# PRESTO



PREcipitation Summary and Temperature Observations  
for the Washington, DC and Baltimore, MD Area

## February 2024: Mild and Dry Winter: Mild and Wet with Below Normal Snowfall



**Upper Left:** Monthly Average Temperature for IAD (4<sup>th</sup> warmest Feb. on record).

**Upper right:** Total Climatological Winter (December, January, February) Precipitation for IAD.

**Lower Left:** Total Climatological Winter Precipitation for the Washington area.

**Lower Right:** Total Climatological Winter Precipitation for the Baltimore Area. IAD had its 3<sup>rd</sup> wettest climatological winter on record, BWI had the 4<sup>th</sup> wettest for the Baltimore area, and DCA had the 12<sup>th</sup> wettest for the Washington area.

## February Highlights

- ☁ **Month (temperature)** – February was a mild month for the area. Monthly average temperature anomalies were 5.9F for IAD, 4.5F at BWI, and 4.4F at DCA. It was the 4<sup>th</sup> warmest February at IAD, 7<sup>th</sup> warmest (tie) at DCA, and 20<sup>th</sup> warmest at BWI.
- ☁ **Month (precipitation)** – February was a dry month across most of the area with below normal monthly precipitation and snowfall. Monthly precipitation anomalies were -1.21 inches at DCA, -1.16 inches at IAD, and -1.06 inches at BWI.
- ☁ **13<sup>th</sup>** – 6-8 inch snowfalls across northern MD and mountains of MD, WV, and VA, with 1-4 inch totals in much of the area outside the metros. The metros had very little snowfall.
- ☁ **17<sup>th</sup>** – 1-4 inch snowfalls across most of the area.
- ☁ **22<sup>nd</sup>** – Lightning damage in Brookeville, MD (Montgomery County).
- ☁ **26<sup>th</sup>** – IAD ties a record high of 69F.
- ☁ **28<sup>th</sup>** – Strong wind gusts across the area, including a 60 mph gust in Petersburg, WV and a 59 mph gust at IAD. BWI and DCA had 51 mph and 50 mph gusts, respectively.

## Winter Highlights

### December

- ☁ **5th - 6th** – 1 to 4-inch snowfalls in mountains of western MD, eastern WV, and western VA.
- ☁ **11th** – 1 to 4-inch snowfalls across central VA and MD.
- ☁ **17th - 18th** – Flooding across central and eastern VA and MD.
- ☁ **18th** – 58 mph wind gust Occoquan River, VA (marine site) and 58 mph gust at 8NW Taylors Island, MD (marine site).
- ☁ **18th and 19th** – Up to 8.5 inches of snow in mountains of western MD and eastern WV (8.5 inches near Oakland, MD).
- ☁ **27th** – 1.62 inches of rain at BWI sets a daily precipitation record.

### January

- ☁ **6th** – Daily record rainfall at IAD of 0.97 inches.
- ☁ **9th** – Daily rainfall records at BWI, DCA, IAD, and Martinsburg of 2.62, 2.24, 1.76, and 1.84 inches, respectively. Strong non-thunderstorm wind gusts of 65 mph 2NW of Long Green, MD and a 63 mph gust at Bishop's Head, MD (Marine observation).
- ☁ **13th** – Strong non-thunderstorm wind gusts of 60 mph 3 SSW of Sabillasville, MD.
- ☁ **15th** – Daily snowfall records of 4.1 inches at BWI and IAD.
- ☁ **19th** – Daily snowfall record at IAD of 4.9 inches.
- ☁ **19th - 21st** – Storm total snowfall of 21.5 inches in McHenry, MD (Garret County, MD).
- ☁ **26th** – Daily and monthly record high temperatures set at DCA and IAD of 80F and 79F, respectively.
- ☁ **28th** – Daily rainfall record at Martinsburg of 1.34 inches.

## February Summary

**Temperatures:** Temperatures in February continued the mild winter theme with well above normal temperatures. A lack of consistent cold air was the main reason for the warmth, as there was only one warm temperature record at Dulles on the 26<sup>th</sup>. Dulles had its 4<sup>th</sup> warmest February record while it was the 7<sup>th</sup> warmest (tie) in the Washington area and the 20<sup>th</sup> warmest in the Baltimore area.

**Precipitation:** Precipitation was below normal for most areas, reversing the wet trend of the winter. Areas around the metro were generally a little over an inch below normal in precipitation, while areas west of the metros were near or slightly above normal in precipitation. Mountain regions observed near average snowfall but the lowlands had very little snow. DCA only reported 0.1 inches for the month while IAD reported 1.7 inches and BWI reported 2.2 inches.

## February Stats:

Location	Station Temperatures (°F)					Extreme/Day		Precipitation (inches)				Yearly Precip.
	Average Max	Average Min	Average Temp	Normal	Normal Dep.	Max	Min	Total	Normal	Normal Departure	Snow/Normal Dep	
National (DCA)	53.0	35.7	44.4	40.0	4.4	68/26	26/18	1.41	2.62	-1.21	0.1/-4.9	7.29
Baltimore (BWI)	51.6	30.7	41.1	36.6	4.5	66/26,28	21/25	1.84	2.90	-1.06	2.2/-5.3	8.61
Dulles (IAD)	53.3	31.4	42.3	36.4	5.9	69/26*	20/18	1.45	2.61	-1.16	1.7/-5.3	7.45

\* - Daily record \*\* - Monthly record

## Winter Summary

**Temperatures:** Temperatures for the climatological winter were quite mild with all 3 months averaging above normal. The overall winter anomalies ranged from 3.5F at DCA, 4.5F at BWI and 4.7F at IAD. The only extended stretch of cold weather was from January 15-23. Neither BWI nor DCA had a temperature below 10F, and Dulles only had 2 days with temperatures below 10F (both during the cold stretch in January). Both DCA and IAD set monthly high temperature records on January 26<sup>th</sup>, with 80 and 79F, respectively, and IAD had its 4<sup>th</sup> warmest February on record. February was the mildest month relative to normal.

IAD had its 3<sup>rd</sup> warmest climatological winter on record at 40.7F (2016-17 is the warmest), DCA tied for the 6<sup>th</sup> warmest climatological winter on record at 43.2F in the Washington area (2016-17 is the warmest), and BWI tied for the 7<sup>th</sup> warmest on record at 40.8 – the warmest since 1950.

**Precipitation:** Overall, the winter season was wet, with December and January being well above normal in precipitation while February was below normal. Despite the relatively low amounts of precipitation in February, IAD had its 3<sup>rd</sup> wettest climatological winter season on record while the Baltimore area had its 4<sup>th</sup> wettest, and the Washington area had its 12<sup>th</sup> wettest. Climatological winter precipitation anomalies were 4.35 inches for IAD, 4.53 inches at DCA and 6.08 inches at BWI. It was especially wet in January, as IAD had its 3<sup>rd</sup> wettest January on record, BWI had its 5<sup>th</sup> wettest, and DCA had its 6<sup>th</sup> wettest.

With the warm temperatures, snowfall was below normal, but most areas received about 70% of their normal snowfall. There were only a few days in each month with accumulating snowfall, but many areas did see the first 4 inch or greater snowfall in nearly 2 years during January. Snowfall anomalies for the climatological winter are -5.1 inches at BWI, -5.0 inches at IAD and -3.6 inches at DCA.

## Winter Stats (December 2023 - February 2024):

Location	Station Temperatures (°F)					Extreme/Day		Precipitation (inches)			
	Average Max	Average Min	Average Temp	Normal	Normal Dep.	Max	Min	Total	Normal	Normal Departure	Snow/Nor mal Dep
National (DCA)	51.0	35.5	43.2	39.7	3.5	80/1-26**	16/1-17	13.42	8.89	4.53	8.0/-3.6
Baltimore (BWI)	49.9	31.8	40.8	36.5	4.3	78/1-26	12/1-17	15.77	9.69	6.08	11.3/-5.1
Dulles (IAD)	50.5	31.0	40.7	36.0	4.7	79/1-26**	7/1-22	13.20	8.85	4.35	11.7/-5.0

\*: Daily record

\*\* : Monthly record

## Looking Ahead: Normals for March

Location	Station Temperatures (°F)			Extreme/Day		Precipitation (inches)			Nml Snowfall/ Max/Year
	Max	Min	Month Average	Record Max/Date	Record Min/Date	Normal	Precip. Max/Year	Precip. Min/Year	
<b>National (DCA)</b>	56.5	38.6	47.6	93/23/1907	4/4/1873	3.50	8.84/1891	.05/2006	2.0/19.3/1914
<b>Baltimore (BWI)</b>	54.8	33.9	44.3	90/29/1945	4/4/2014	4.01	8.64/1994	.18/2006	2.8/25.6/1892
<b>Dulles (IAD)</b>	54.8	33.6	44.2	89/30/1998	-1/4/2014*	3.50	7.65/1993	.07/2006	3.9/19.8/2014

\* - Latest of more than one occurrence