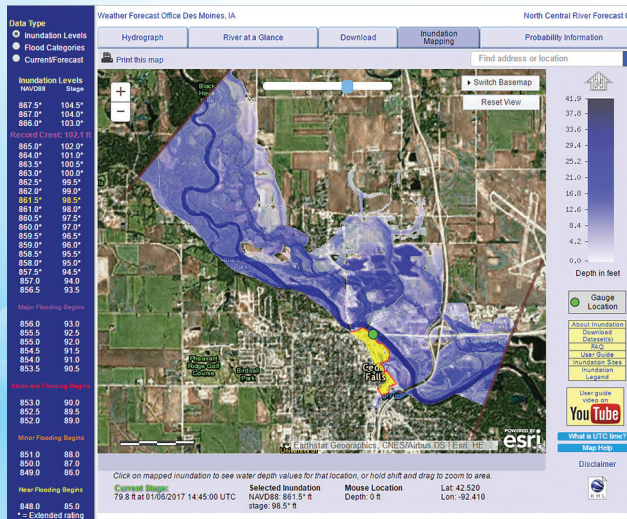


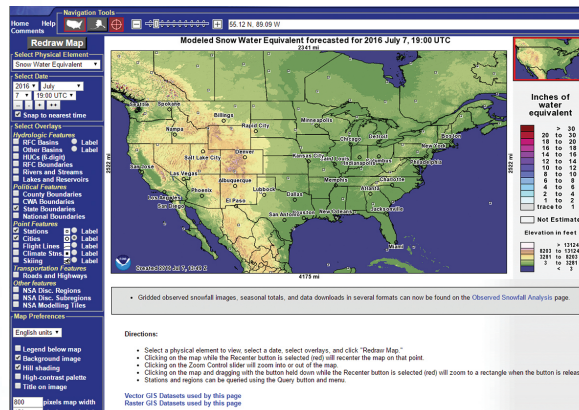
FLOOD INUNDATION MAPS

The inundation mapping interface from the water.weather.gov website provides information on the spatial extent and depth of floodwaters in the vicinity of NWS forecast locations. This feature is available for NWS forecast points where data sets known as flood inundation libraries have been developed through partnerships with federal, state and local agencies. It provides the ability to view inundation levels at stages to the nearest foot or at the minor, moderate and major flood categories. From this interface, the user can also view maps of observed or forecast inundation levels based on current NWS river forecasts.



SNOW INFORMATION

The Office of Water Prediction offers users a variety of web-based snow observations, analyses, data sets and map products for the Nation at www.nohrsc.noaa.gov. These include in-depth analyses of national and regional snow conditions; interface to remotely-sensed snow information; national snow analyses in 3D; airborne snow survey data; satellite observations of northern hemisphere snow cover; forecasts, watches and warnings; national snow analyses data archive; and alphanumeric data products in Standard Hydrologic Exchange Format (SHEF).



U.S Department of Commerce
National Oceanic and Atmospheric Administration



National Weather Service
June 2017
NOAA/YPA-201751

NATIONAL WEATHER SERVICE

WATER RESOURCES INFORMATION ON THE WEB



Your gateway to web resources provided through NOAA's Advanced Hydrologic Prediction Service begins here:
water.weather.gov

