



Drought Information Statement for South Florida

04 09 2026

Issued By: NWS Miami-South Florida

Contact Information: sr-mfl.webmaster@noaa.gov

- Ongoing Extreme to Severe Drought Across South Florida
- Please see all available products at <https://drought.gov/drought-information-statements>.
- Visit our local interactive drought page at <https://nws-miami-drought-page-noaa.hub.arcgis.com/>

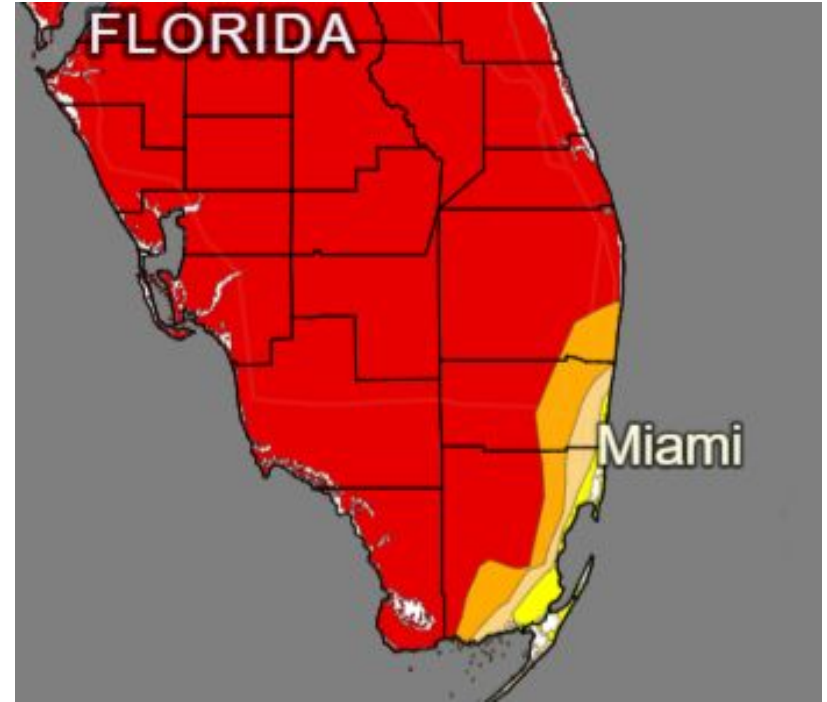




U.S. Drought Monitor

Link to the [latest U.S. Drought Monitor](#) for South Florida

- A little improvement in drought conditions over southern Everglades and eastern metro areas of Broward/Miami-Dade Counties.
- Drought intensity and Extent
 - **D0 (Abnormally Dry):** Coastal Broward/Coastal Miami-Dade
 - **D1 (Moderate Drought):** Metro Broward & Miami-Dade.
 - **D2 (Severe Drought):** Interior metro Broward/Miami-Dade Counties and SE metro Palm Beach County along with southern Everglades.
 - **D3 (Extreme Drought):** Rest of South Florida.



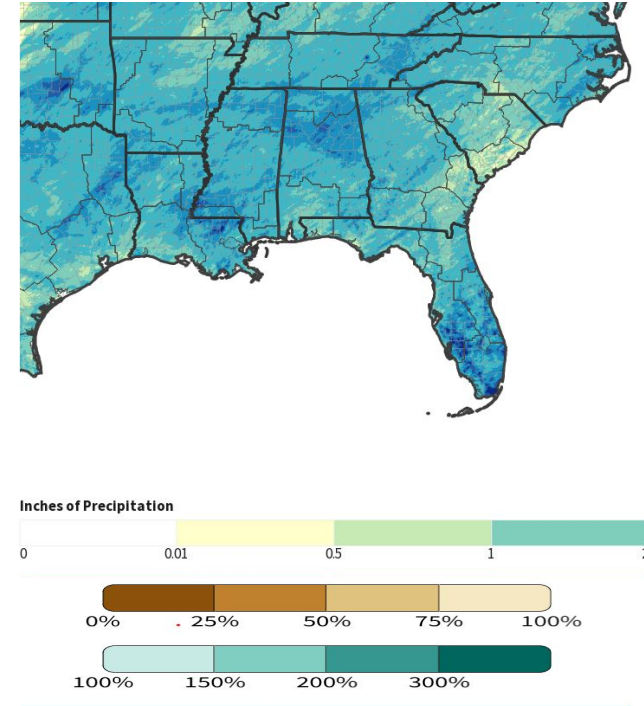
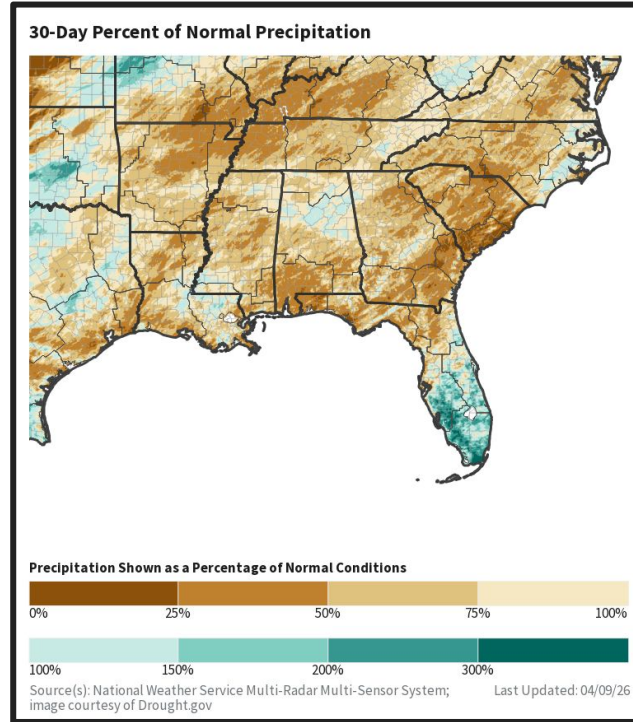
U.S. Drought Monitor valid 7AM EDT April 7th 2026.





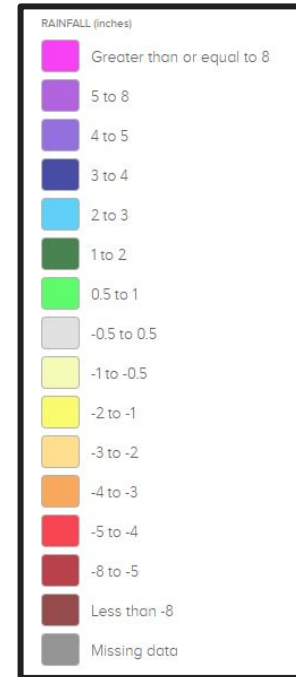
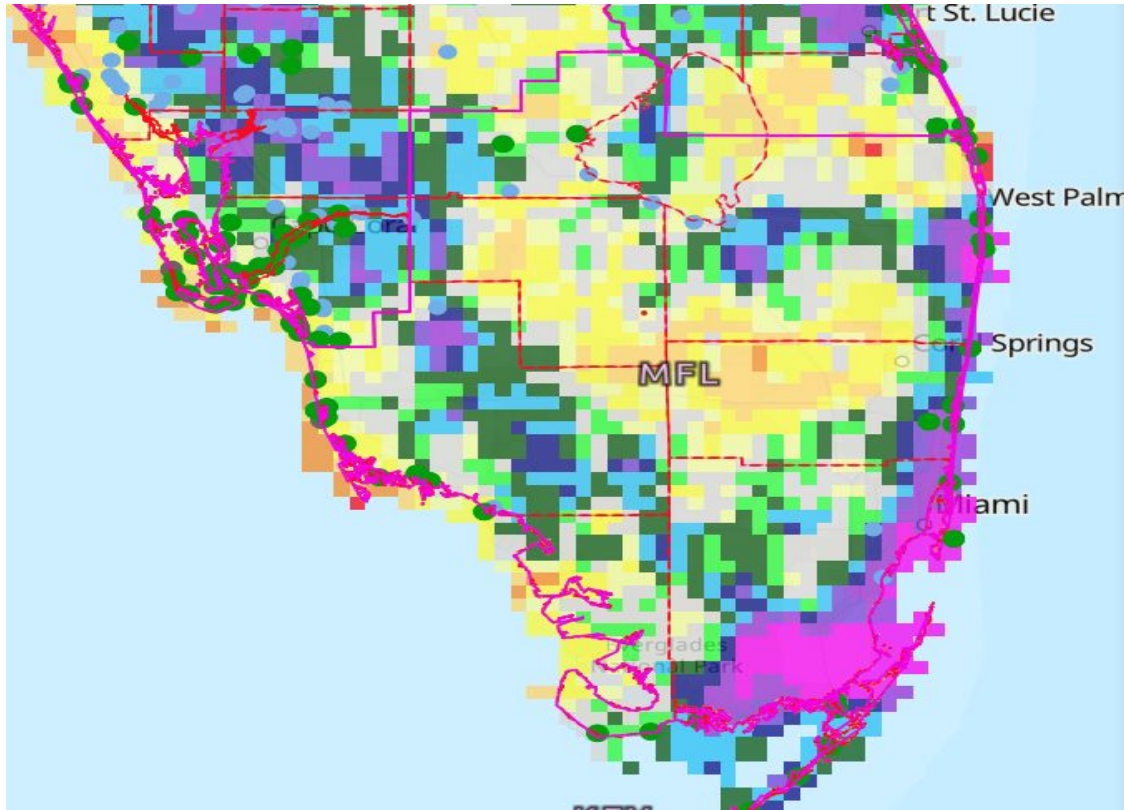
30 Day Observed Precipitation & Percentage of Normal

- Rainfall amounts across the region has been near normal.





90 Day Rainfall Departure (Since 01/09/2026)





Precipitation

- Rainfall observed with the departure and percent of normal since November 1st, 2025

The following table gives the rainfall from November 1, 2025 to April 8th, 2026:

Airports:	Observed Rainfall	Dep fm Normal	Percent of Normal
Palm Beach Intl	14.64	-2.80	84%
Naples Municipal	6.74	-1.51	82%
Ft Lauderdale-Hollywood Intl	15.23	-0.38	102%
Miami Intl	10.42	-2.75	79%
Secondary Observation Sites			
Moore Haven (Glades)	7.16	-3.43	68%
Opa Locka (Miami-Dade)	8.21	-4.59	64%
Homestead (Miami-Dade)	10.26	-0.60	94%
Hialeah (Miami-Dade)	12.80	-2.08	86%
Palm Beach Gardens (Palm Beach)	7.55	-10.67	41%
North Miami Beach (Miami-Dade)	9.23	-6.66	58%
Devils Garden (Hendry)	6.93	-4.05	63%

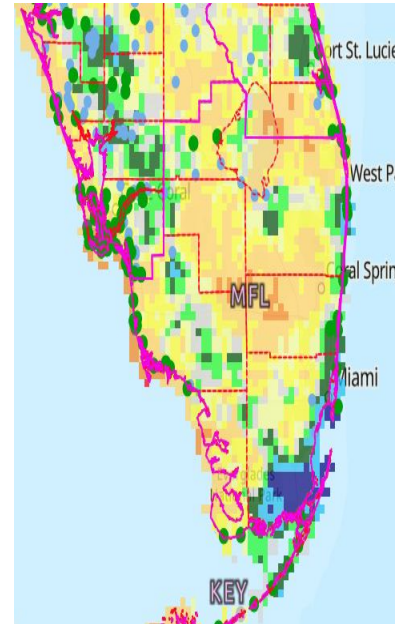
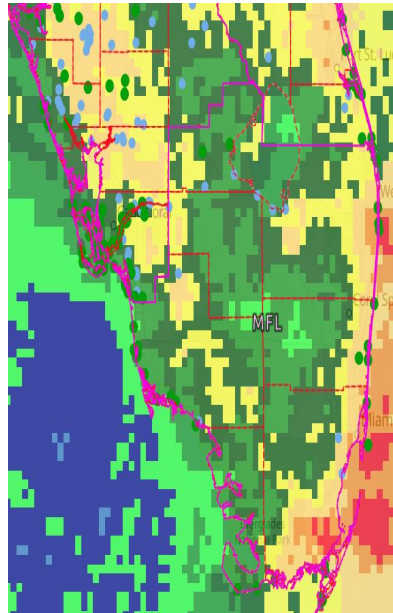


Image Captions:
 Left - Precipitation Amount for [area]
 Right - Percent of Normal Precipitation for [area]
 Data Courtesy High Plains Regional Climate Center.
 Data over the past 120 days ending April 8th, 2025





Hydrologic Impacts

Links: See/submit [Condition Monitoring Observer Reports \(CMOR\)](#) and view the [Drought Impacts Reporter](#)

Hydrologic Impacts

- (4/09/26) Lake Okeechobee water level is currently at 12.12 feet which is **-2.02 feet** below normal of 14.14 feet.
- The underground level water conservation area 1 in Interior Palm Beach County is at 16.27 feet and it should be at 16.12 feet which is **+0.15 feet** above normal for this time of year.
- The Underground level water conservation area 2 in Interior Broward County is at 12.09 feet and its normal level is 11.00 feet which is **+1.09 feet** above normal for this time of year.
- The underground level water conservation area 3 in Interior Miami-Dade County is at 8.25 feet and its normal level is at 9.86 feet which is **-1.61 feet** below normal for this time of year.
- **The South Florida Water Management District (SFWMD) continues a Water Shortage Warning for Collier and Glades counties amid continuing dry conditions and increasing water supply concerns.**





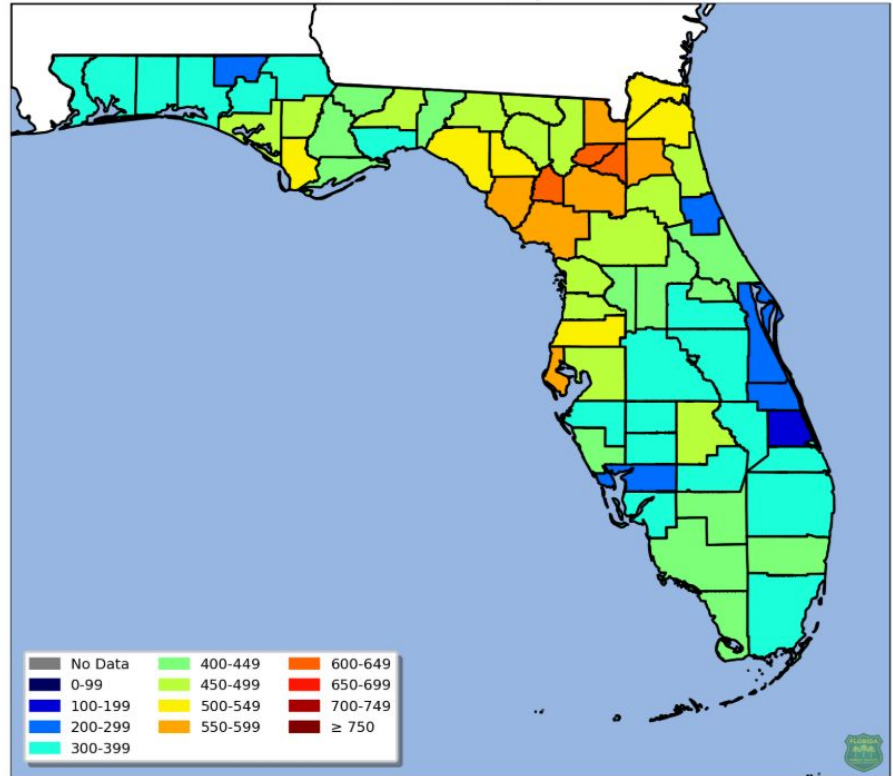
Fire Hazard Impacts

[Keetch-Byram Drought Index \(KBDI\)](#)

Fire Hazard Impacts

- KBDI index has improved across South Florida
- Most areas are now in 450 to 500 range
- Only areas that are in 300 to 400 is Palm Beach, Miami-Dade, and Glades Counties.

KBDI Averages by County | Thu 04/09/26





Burn Bans

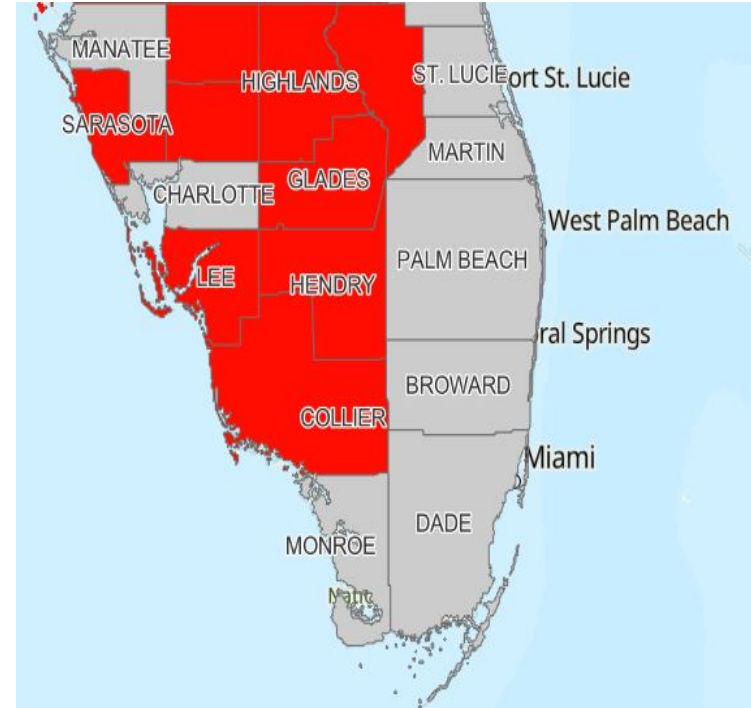
Link: [County Burn Bans](#)

Current Burn Bans

- Collier, Hendry, Glades Counties.
- *Issued by local county officials.*

Burn Bans*

-  Burn Ban
-  No Burn Ban
-  Yard Debris Burn Always Prohibited



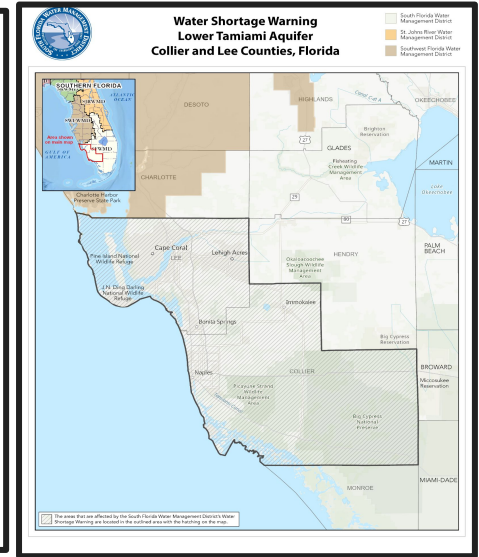
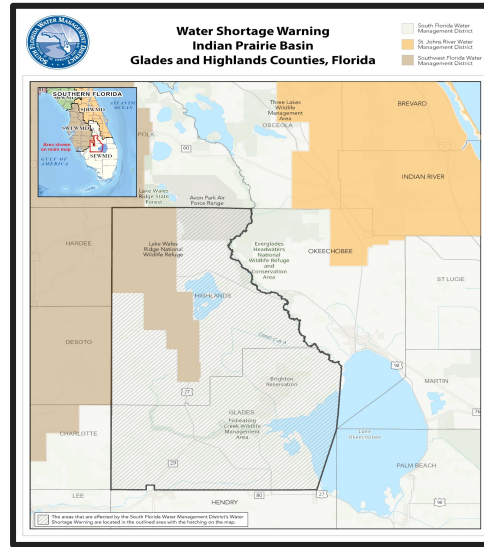


Water Shortage Warnings

Link: [South Florida Water Management District Water Shortage Page](#)

Water Shortage Warnings

- Collier and Glades Counties
- Issued by the South Florida Water Management District.





Soil Moisture

- South Florida soil moisture has continue to improved over South Florida.
- Palm Beach County is 20 to 30 percentile.
- Rest of South Florida is now in the normal range for this time of year.

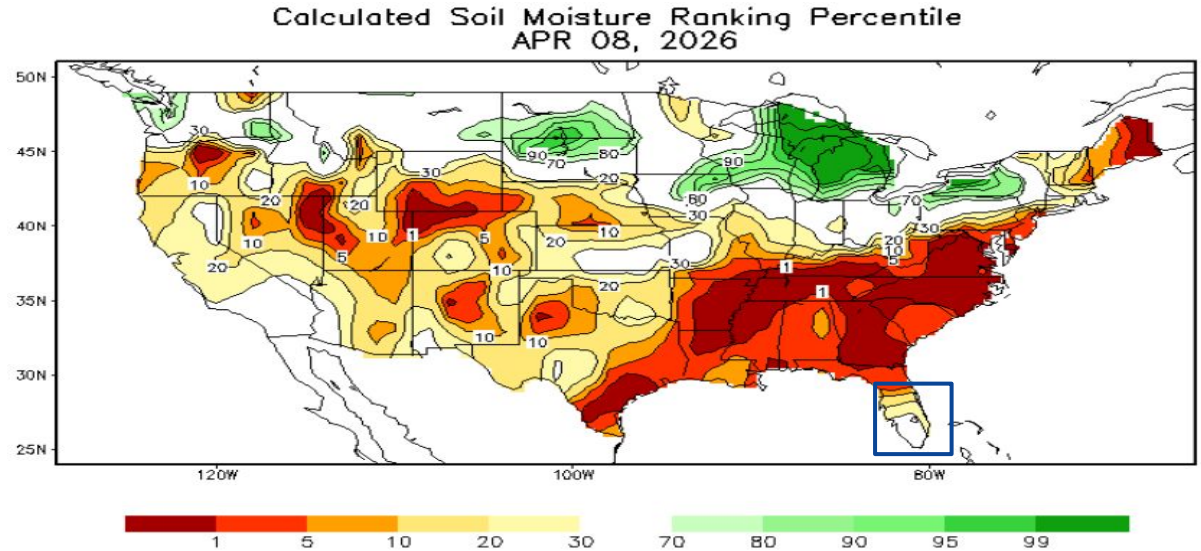


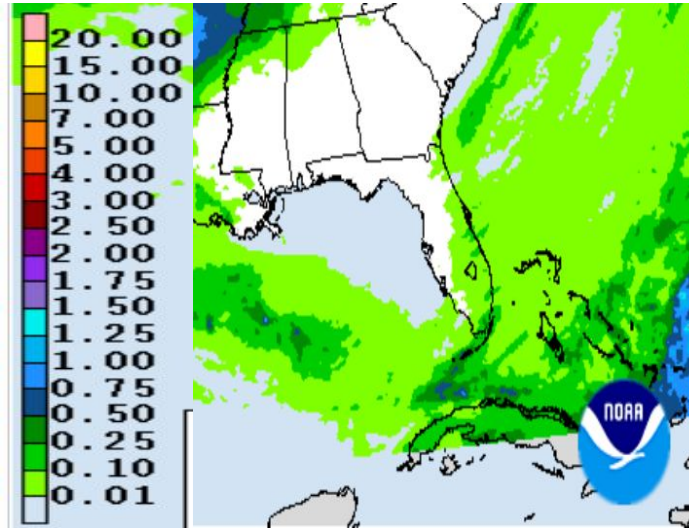
Image Captions:
CPC Calculated [Soil Moisture Ranking Percentile](#)
valid April 8th, 2026



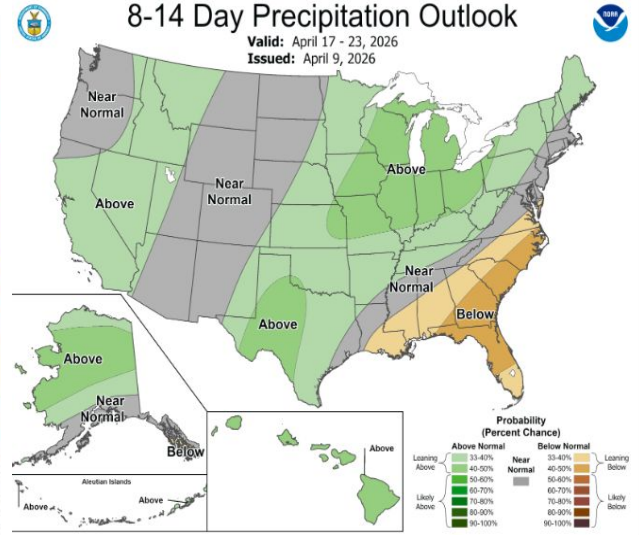


Precipitation Outlook

- A few showers will still affect South Florida through Friday. High pressure will build in through next week leading to dry weather.
- Rainfall amounts less than 0.10 inches are expected in next 7 days. Most of forecast rainfall will fall before Friday night.
- CPC's is highlighting an 33-40% chance ("leaning below normal") rainfall between April 17-31, 2026.



168 Hour Day 1-7 Rainfall Accumulations -
Weather Prediction Center
(Through 8am April 16th, 2026)



8-14 Day Precipitation Outlook
Climate Prediction Center
Valid April 9th 2026





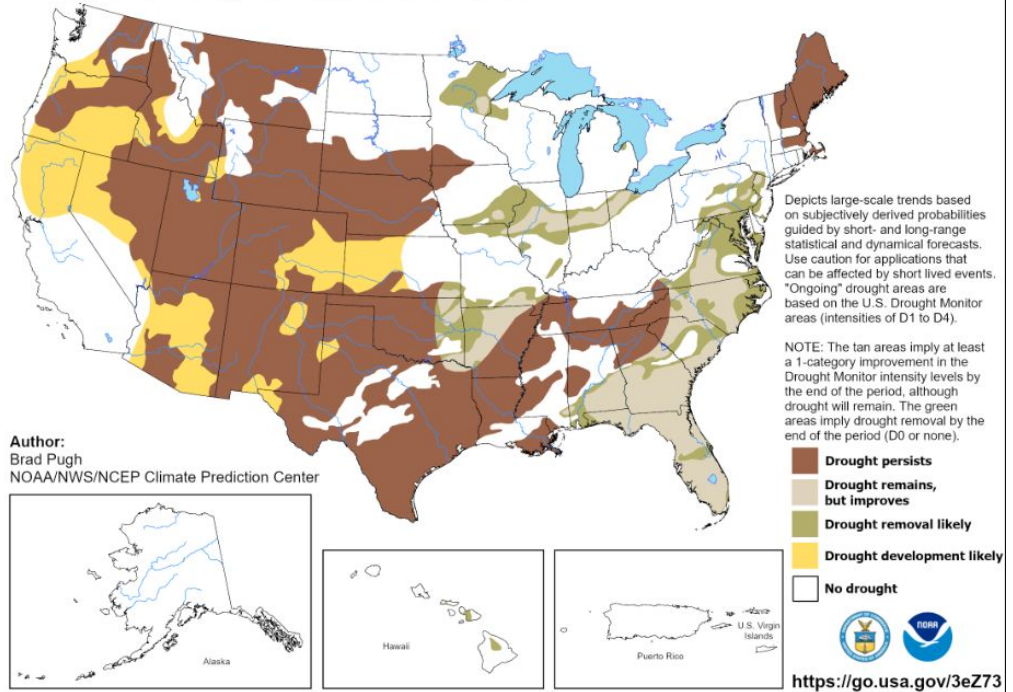
Drought Outlook

The latest monthly and seasonal outlooks can be found on the [CPC homepage](#)

- Drought is expected to persist through June of 2026, but should start to improve once the rainy season gets started in May.

U.S. Seasonal Drought Outlook Drought Tendency During the Valid Period

Valid for March 19 - June 30, 2026
Released March 19, 2026



Links to the latest:

- [Climate Prediction Center Monthly Drought Outlook](#)
- [Climate Prediction Center Seasonal Drought Outlook](#)

