

Storm Data and Unusual Weather Phenomena - April 2009

Location	Date/Time	Deaths & Injuries	Property & Crop Dmg	Event Type and Details
NEW MEXICO, Southeast				
(NM-Z028) EDDY COUNTY PLAINS				
	04/04/09 02:28 MST	0		High Wind (MAX 58 kt)
	04/04/09 02:31 MST	0		
A strong mid-level jet max associated with a mid to upper level trough combined with a deep surface low resulted in high winds across a small portion of the plains of southeast New Mexico.				
LEA COUNTY --- 1.8 N HOBBS [32.73, -103.14]				
	04/11/09 13:56 MST	0		Hail (1.00 in)
	04/11/09 13:57 MST	0		Source: Trained Spotter
The duration of the hail was estimated for this event.				
LEA COUNTY --- 0.8 N HOBBS [32.71, -103.13]				
	04/11/09 13:58 MST	0		Hail (1.75 in)
	04/11/09 14:00 MST	0		Source: Law Enforcement
LEA COUNTY --- 0.7 S LOVINGTON [32.92, -103.35]				
	04/11/09 14:00 MST	0		Hail (1.75 in)
	04/11/09 14:05 MST	0		Source: Law Enforcement
The duration of the hail was estimated for this event.				
LEA COUNTY --- 1.4 N LOVINGTON [32.95, -103.35]				
	04/11/09 14:00 MST	0		Hail (1.00 in)
	04/11/09 14:05 MST	0		Source: Law Enforcement
The duration of the hail was estimated for this event.				
LEA COUNTY --- 2.0 W LOVINGTON ARPT [32.95, -103.43]				
	04/11/09 14:00 MST	0		Funnel Cloud
	04/11/09 14:04 MST	0		Source: Law Enforcement
It is unknown whether or not a tornado actually developed.				
LEA COUNTY --- 10.7 ESE CAPROCK [33.33, -103.54]				
	04/11/09 14:15 MST	0		Hail (1.75 in)
	04/11/09 14:17 MST	0		Source: Public
Golf ball size hail was reported along US 380 about 10 miles west of Tatum, NM. The hail was covering the road and the person who made the report lost control of her van. The individual was not injured. The time of the event was estimated according to the report and radar.				
LEA COUNTY --- 7.0 SSE HOBBS [32.61, -103.08]				
	04/11/09 14:30 MST	0		Hail (1.00 in)
	04/11/09 14:31 MST	0		Source: Trained Spotter
The duration of the hail was estimated for this event.				
LEA COUNTY --- EUNICE [32.43, -103.15]				
	04/11/09 15:15 MST	0		Hail (1.00 in)
	04/11/09 15:17 MST	0		Source: Trained Spotter
The duration of the hail was estimated for this event.				
LEA COUNTY --- 0.8 N HOBBS [32.71, -103.13]				
	04/11/09 15:22 MST	0		Hail (0.75 in)
	04/11/09 15:24 MST	0		Source: Amateur Radio

Storm Data and Unusual Weather Phenomena - April 2009

Location	Date/Time	Deaths & Injuries	Property & Crop Dmg	Event Type and Details
The duration of the hail was estimated for this event.				
LEA COUNTY --- 1.0 NNW HOBBS [32.71, -103.14]				
	04/11/09 15:22 MST	0		Thunderstorm Wind (EG 65 kt)
	04/11/09 15:23 MST	0		Source: Amateur Radio
An amateur radio operator reported an estimated gust near 60 to 75 mph. No damage was reported.				
LEA COUNTY --- 4.5 E EUNICE [32.43, -103.07]				
	04/11/09 15:53 MST	0		Hail (1.25 in)
	04/11/09 15:55 MST	0		Source: Law Enforcement
The time and location were adjusted for this event according to radar. The original report time was after the storm had passed.				
LEA COUNTY --- EUNICE [32.43, -103.15]				
	04/11/09 16:30 MST	0		Hail (1.75 in)
	04/11/09 16:33 MST	0		Source: Law Enforcement
The duration of the hail was estimated for this event.				
<p>On April 11, 2009, a surface high northeast of the region resulted in easterly upslope flow over most of the CWA. Meanwhile, a mid to upper level low near Southern California approached the area from the west. Although the deepest moisture was confined to the Gulf Coast (due to the previously mentioned surface high) there was enough moisture convergence along a stalled surface boundary and dryline. Most unstable CAPE values along these features of 1000 j/kg and 0-6 km bulk shear magnitudes of 60 kt allowed for severe storms to develop as the dynamics neared the area during the late afternoon and early evening hours. A Severe Thunderstorm Watch was issued from 1520-2300 local.</p>				
EDDY COUNTY --- 8.0 WSW WHITES CITY [32.13, -104.50]				
	04/28/09 17:00 MST	0		Hail (0.88 in)
	04/28/09 17:03 MST	0		Source: Public
EDDY COUNTY --- 0.9 NW WHITES CITY [32.18, -104.38]				
	04/28/09 17:19 MST	0		Hail (0.88 in)
	04/28/09 17:21 MST	0		Source: Public
EDDY COUNTY --- 5.6 N WHITES CITY [32.25, -104.38]				
	04/28/09 17:25 MST	0		Hail (1.00 in)
	04/28/09 17:28 MST	0		Source: Trained Spotter
EDDY COUNTY --- 4.2 W WHITES CITY [32.18, -104.44]				
	04/28/09 17:45 MST	0		Hail (0.88 in)
	04/28/09 17:47 MST	0		Source: Trained Spotter
EDDY COUNTY --- 12.0 SE WHITES CITY [32.05, -104.22], 12.0 SSW MALAGA [32.06, -104.15]				
	04/28/09 18:25 MST	0		Tornado (EF0, L: 4.56 mi , W: 150 yd)
	04/28/09 18:43 MST	0		Source: Broadcast Media
The public reported the first brief "touchdown" of this tornado at 1825 MST about 12 miles southeast of Whites City, NM. Here, there were 2" tree limbs found within the path of the tornado in addition to golf ball size hail associated with the storm. At 1842, a trained weather spotter from the local media reported a tornado about 10 miles south southwest of Malaga, NM. The position of the report was adjusted slightly according to radar. Please see the attached photos for images of the tornado.				
LEA COUNTY --- 14.0 W JAL [32.12, -103.42]				
	04/28/09 21:15 MST	0		Hail (1.00 in)
	04/28/09 21:17 MST	0		Source: COOP Observer

Extensive cloud cover during the day, mostly east of the Pecos River, only resulted in a couple of isolated severe storms over southeast NM for this event. A mid to upper level shortwave trough and surface convergence a long a lee trough provided the lift during the evening hours. Moderate surface based instability, 0 to 6 km bulk shear magnitudes near 50 kt and enhanced low level shear due to backing winds across the area resulted in a couple of weak tornadoes being produced by a long lived supercell.

Storm Data and Unusual Weather Phenomena - April 2009

Location	Date/Time	Deaths & Injuries	Property & Crop Dmg	Event Type and Details
----------	-----------	-------------------	---------------------	------------------------



This photo was taken by Greg Morgan (trained spotter) as he witnessed the rope like tornado at 1742 MST.

TEXAS, West

(TX-Z047) BORDEN, (TX-Z060) WINKLER, (TX-Z074) DAVIS / APACHE MOUNTAINS AREA, (TX-Z258) GUADALUPE MOUNTAINS OF CULBERSON COUNTY

04/01/09 10:00 MST	0	High Wind (MAX 59 kt)
04/01/09 10:55 MST	0	

(TX-Z047) BORDEN, (TX-Z060) WINKLER, (TX-Z074) DAVIS / APACHE MOUNTAINS AREA, (TX-Z258) GUADALUPE MOUNTAINS OF CULBERSON COUNTY

04/01/09 16:15 CST	0	High Wind (MAX 59 kt)
04/01/09 22:50 CST	0	

Very windy conditions developed over the Guadalupe Mountains, Davis Mountains and portions of the Permian Basin on April 1, 2009 as an upper level shortwave trough approached the region from the west. A very tight pressure gradient combined with a strong mid-level jet resulting in high winds.

(TX-Z046) DAWSON, (TX-Z048) SCURRY, (TX-Z061) ECTOR, (TX-Z062) MIDLAND, (TX-Z074) DAVIS / APACHE MOUNTAINS AREA

04/01/09 23:00 CST	0	High Wind (MAX 54 kt)
04/02/09 06:10 CST	0	

A vigorous upper level trough moved over the region on this day, with an associated cold front moving southeastward across southwest Texas. The mid-level winds mixed down to the higher terrain of the mountains of west Texas. Meanwhile, an associated

Storm Data and Unusual Weather Phenomena - April 2009

Location	Date/Time	Deaths & Injuries	Property & Crop Dmg	Event Type and Details
----------	-----------	-------------------	---------------------	------------------------

deep surface low on the order of 991 mb over southwest Oklahoma resulted in a very tight pressure gradient across the Permian Basin. During the overnight hours, a strong cold front passed over the region and high winds were observed just behind this feature.

(TX-Z074) DAVIS / APACHE MOUNTAINS AREA, (TX-Z258) GUADALUPE MOUNTAINS OF CULBERSON COUNTY

04/04/09 01:00 MST			0	High Wind (MAX 56 kt)
04/04/09 16:55 MST			0	

(TX-Z074) DAVIS / APACHE MOUNTAINS AREA, (TX-Z258) GUADALUPE MOUNTAINS OF CULBERSON COUNTY

04/04/09 12:45 CST			0	High Wind (MAX 56 kt)
04/04/09 13:00 CST			0	

A strong mid-level jet max associated with a mid to upper level trough combined with a deep surface low resulted in high winds across the mountains of west Texas.

(TX-Z258) GUADALUPE MOUNTAINS OF CULBERSON COUNTY

04/08/09 15:02 MST			0	High Wind (MAX 62 kt)
04/08/09 15:07 MST			0	

Westerly winds increased over the higher terrain of the mountains of west Texas as an upper level trough approached the region. Strong mid level flow mixed down towards the surface, resulting in very high wind gusts near Guadalupe, TX.

(TX-Z048) SCURRY, (TX-Z060) WINKLER, (TX-Z074) DAVIS / APACHE MOUNTAINS AREA, (TX-Z258) GUADALUPE MOUNTAINS OF CULBERSON COUNTY

04/08/09 19:33 CST			0	High Wind (MAX 59 kt)
04/09/09 10:31 CST			0	

(TX-Z048) SCURRY, (TX-Z060) WINKLER, (TX-Z074) DAVIS / APACHE MOUNTAINS AREA, (TX-Z258) GUADALUPE MOUNTAINS OF CULBERSON COUNTY

04/09/09 00:51 MST			0	High Wind (MAX 59 kt)
04/09/09 03:10 MST			0	

A passing mid-level low north of the region resulted in a 70 kt mid-level speed max working its way over the area during the early morning hours. Deep dry adiabatic layers resulted in maximum mixing potential, which allowed the stronger winds to mix down to the surface. The 700 hPa gradient over the area on this day suggested the potential for high winds was high, especially over the higher terrain of west Texas.

(TX-Z074) DAVIS / APACHE MOUNTAINS AREA, (TX-Z258) GUADALUPE MOUNTAINS OF CULBERSON COUNTY

04/11/09 10:55 CST			0	High Wind (MAX 65 kt)
04/11/09 11:00 CST			0	

(TX-Z074) DAVIS / APACHE MOUNTAINS AREA, (TX-Z258) GUADALUPE MOUNTAINS OF CULBERSON COUNTY

04/12/09 14:51 MST			0	High Wind (MAX 65 kt)
04/12/09 14:56 MST			0	

A mid to upper level low moved across the Texas Panhandle on Sunday, April 12, 2009. The mid level speed max near the base of the trough axis, combined with strong mixing, resulted in high winds across the Guadalupe and Davis Mountains of west Texas during the afternoon hours. Although the surface winds were also strong across the plains due to a tight pressure gradient from a lee low, they did not reach high wind criteria.

GAINES COUNTY --- 0.6 W HIGGINBOTHAM [32.90, -102.99]

04/11/09 15:31 CST			0	Hail (1.75 in)
04/11/09 15:36 CST			0	Source: Trained Spotter

The duration of the hail was estimated for this event.

REEVES COUNTY --- 1.4 WSW PECOS [31.41, -103.50]

04/11/09 16:17 CST			0	Hail (0.88 in)
04/11/09 16:19 CST			0	Source: Public

The duration of the hail was estimated for this event.

Storm Data and Unusual Weather Phenomena - April 2009

Location	Date/Time	Deaths & Injuries	Property & Crop Dmg	Event Type and Details
GAINES COUNTY --- 0.6 W HIGGINBOTHAM [32.90, -102.99]				
	04/11/09 16:32 CST		0	Hail (0.75 in)
	04/11/09 16:40 CST		0	Source: Trained Spotter
WINKLER COUNTY --- 0.6 W KERMIT [31.85, -103.09]				
	04/11/09 16:38 CST		0	Hail (0.88 in)
	04/11/09 16:40 CST		0	Source: Trained Spotter
WINKLER COUNTY --- 0.6 W KERMIT [31.85, -103.09]				
	04/11/09 16:40 CST		0	Hail (1.00 in)
	04/11/09 16:41 CST		0	Source: Trained Spotter
GAINES COUNTY --- 12.0 W SEMINOLE [32.72, -102.86]				
	04/11/09 17:10 CST		0	Hail (1.00 in)
	04/11/09 17:14 CST		0	Source: Law Enforcement
The duration of the hail was estimated for this event.				
ECTOR COUNTY --- 5.8 NNW NOTREES [32.00, -102.78]				
	04/11/09 17:18 CST		0	Hail (1.00 in)
	04/11/09 17:19 CST		0	Source: Public
GAINES COUNTY --- SEMINOLE [32.72, -102.65]				
	04/11/09 17:28 CST		0	Hail (1.00 in)
	04/11/09 17:30 CST		0	Source: Public
The duration of the hail was estimated for this event.				
ECTOR COUNTY --- 2.0 ENE ODESSA [31.86, -102.34]				
	04/11/09 17:47 CST		0	Hail (1.00 in)
	04/11/09 17:49 CST		0	Source: Public
The duration of the hail was estimated for this event.				
ECTOR COUNTY --- 1.2 NE GREENFIELD ACRES [31.88, -102.38]				
	04/11/09 17:48 CST		0	Hail (1.00 in)
	04/11/09 17:50 CST		0	Source: Trained Spotter
The duration of the hail was estimated for this event.				
ECTOR COUNTY --- 5.0 E GOLDSMITH [31.98, -102.53]				
	04/11/09 17:48 CST		0	Hail (1.00 in)
	04/11/09 17:50 CST		0	Source: Trained Spotter
The duration of the hail was estimated for this event.				
ECTOR COUNTY --- 1.5 NNE ODESSA [31.87, -102.36]				
	04/11/09 17:50 CST		0	Hail (1.00 in)
	04/11/09 17:52 CST		0	Source: Public
The duration of the hail was estimated for this event.				
ECTOR COUNTY --- 1.6 S ODESSA ECTOR CO ARPT [31.90, -102.38]				
	04/11/09 17:50 CST		0.12M	Thunderstorm Wind (EG 65 kt)
	04/11/09 17:54 CST		0	Source: Broadcast Media

The broadcast media reported roofs were torn off structures, along with minor tree and vehicle damage in North Odessa at 1750 CST. A NWS Damage Survey confirmed downburst/gustnado like damage across Odessa-Schlemeyer Field Airport, with extensive hangar damage noted. A large tree was also uprooted in a neighborhood around 1754 CST. Please see the attached photos.

Storm Data and Unusual Weather Phenomena - April 2009

Location	Date/Time	Deaths & Injuries	Property & Crop Dmg	Event Type and Details
ECTOR COUNTY --- ODESSA [31.85, -102.37]				
	04/11/09 17:53 CST		0	Hail (0.88 in)
	04/11/09 17:56 CST		0	Source: Public
The duration of the hail was estimated for this event.				
MIDLAND COUNTY --- 3.7 W WARFIELD [31.92, -102.29]				
	04/11/09 17:53 CST		0	Hail (1.75 in)
	04/11/09 17:56 CST		0	Source: Trained Spotter
The duration of the hail was estimated for this event.				
DAWSON COUNTY --- 6.4 W LAMESA [32.73, -102.06]				
	04/11/09 17:57 CST		0	Thunderstorm Wind (EG 61 kt)
	04/11/09 17:58 CST		0	Source: Trained Spotter
An estimated wind gust of 60 to 70 mph was reported by a trained spotter along Highway 62/180, 6 miles west of Lamesa, TX. No damage was reported.				
MIDLAND COUNTY --- 1.3 NNE (MAF) MIDLAND INTL [31.95, -102.19]				
	04/11/09 18:00 CST		0	Hail (2.50 in)
	04/11/09 18:02 CST		0	Source: NWS Employee
MIDLAND COUNTY --- 2.7 SW WARFIELD [31.89, -102.26]				
	04/11/09 18:02 CST		0	Hail (1.25 in)
	04/11/09 18:04 CST		0	Source: Trained Spotter
The duration of the hail was estimated for this event.				
MIDLAND COUNTY --- 4.7 W MIDLAND [32.01, -102.16]				
	04/11/09 18:10 CST		0	Hail (2.00 in)
	04/11/09 18:12 CST		0	Source: Law Enforcement
The duration of the hail was estimated for this event.				
MIDLAND COUNTY --- 3.2 WSW MIDLAND [31.99, -102.13]				
	04/11/09 18:12 CST		0	Hail (2.00 in)
	04/11/09 18:14 CST		0	Source: Public
The duration of the hail was estimated for this event.				
MIDLAND COUNTY --- 4.3 W MIDLAND [32.00, -102.15]				
	04/11/09 18:12 CST		0.16B	Hail (2.00 in)
	04/11/09 18:14 CST	1	0	Source: Public
Numerous roofs throughout Midland, TX were damaged during this event. A local newspaper clipping with a quote from a major roofing company estimated 40 to 50 percent of the homes in Midland needed to be re-roofed. The average cost to replace a shingled roof is anywhere from \$8-\$10K. This resulted in an estimated \$160 million in roof damage. In addition to homes being damaged, multiple vehicles also received damage from the hail. According to local dent repair shops and car dealers across the area, an estimated 800 vehicles had to be repaired resulting in \$1.2 million in damage. A Midland woman was also struck in the stomach by a hail stone, after it broke through her dining room window. Her injuries were only minor and did not require medical attention.				
MIDLAND COUNTY --- 4.1 ENE (MAF) MIDLAND INTL [31.96, -102.14]				
	04/11/09 18:15 CST		0	Hail (1.75 in)
	04/11/09 18:17 CST		0	Source: NWS Employee
The duration of the hail was estimated for this event.				
MIDLAND COUNTY --- 2.7 N MIDLAND [32.04, -102.08]				
	04/11/09 18:20 CST		10K	Hail (1.75 in)
	04/11/09 18:21 CST		0	Source: NWS Employee
The employee's roof was damaged by the hail.				

Storm Data and Unusual Weather Phenomena - April 2009

Location	Date/Time	Deaths & Injuries	Property & Crop Dmg	Event Type and Details
DAWSON COUNTY --- 0.6 W LAMESA [32.73, -101.96]				
	04/11/09 18:30 CST		0	Hail (1.00 in)
	04/11/09 18:32 CST		0	Source: Law Enforcement
GLASSCOCK COUNTY --- 15.5 W GARDEN CITY [31.90, -101.76], 14.8 W GARDEN CITY [31.90, -101.75]				
	04/11/09 18:55 CST		3K	Tornado (EF0, L: 0.73 mi , W: 300 yd)
	04/11/09 18:59 CST		0	Source: Trained Spotter
A trained spotter reported a brief tornado approximately 5 TO 8 miles southeast of the intersection of FM 1379 and TX 158 at 1756 CST. A damage survey was conducted, which confirmed one power pole was snapped near its base and another one was damaged along TX 158. Some minor tree limb damage was also noted near the same area. Please see the attached image.				
MIDLAND COUNTY --- 2.7 NNW MIDLAND [32.04, -102.10]				
	04/11/09 19:04 CST		15K	Thunderstorm Wind (MG 56 kt)
	04/11/09 19:09 CST		0	Source: AWOS
The damaging winds knocked over several power lines and a few transformers within the Midland, TX city limits. The exact number of power lines damaged was not available and therefore the monetary damage was estimated based on the cost of power pole/transformer replacement.				
MIDLAND COUNTY --- 3.0 NNE MIDLAND [32.04, -102.06], 2.1 NE MIDLAND [32.02, -102.05], 2.0 NE MIDLAND [32.02, -102.05], 2.9 NNE MIDLAND [32.04, -102.06]				
	04/11/09 19:05 CST		0	Flash Flood (due to Heavy Rain)
	04/11/09 19:35 CST		0	Source: Trained Spotter
Flooding was reported along most of Fairgrounds Road by a trained spotter. The flowing water height was estimated to be 3 to 6 inches high.				
MIDLAND COUNTY --- 6.5 SSW SPRABERRY [31.84, -101.89]				
	04/11/09 19:11 CST		0	Hail (1.50 in)
	04/11/09 19:12 CST		0	Source: Public
The duration of the hail was estimated for this event.				
GLASSCOCK COUNTY --- 1.4 S LEES [32.06, -101.48]				
	04/11/09 19:13 CST		0	Thunderstorm Wind (EG 65 kt)
	04/11/09 19:14 CST		0	Source: Trained Spotter
A trained spotter estimated the winds were gusting near 75 mph. Since there were a limited number of structures and trees near the area, no damage was reported.				
GLASSCOCK COUNTY --- 1.4 S LEES [32.06, -101.48]				
	04/11/09 19:13 CST		0	Hail (1.00 in)
	04/11/09 19:15 CST		0	Source: Trained Spotter
The duration of the hail was estimated for this event based on radar data.				
UPTON COUNTY --- 16.5 W MIDKIFF [31.63, -102.13]				
	04/11/09 19:15 CST		0	Hail (0.88 in)
	04/11/09 19:16 CST		0	Source: Public
ECTOR COUNTY --- 1.1 NNE WESTOVER [31.84, -102.44], 1.3 NNE WESTOVER [31.84, -102.44], 0.9 NE WESTOVER [31.83, -102.44], 0.8 NE WESTOVER [31.83, -102.44]				
	04/11/09 19:20 CST		0	Flash Flood (due to Heavy Rain)
	04/11/09 20:00 CST		0	Source: Law Enforcement
Local law enforcement observed flooding near the intersection of 10th Street and FM 1936. There was also flooding near the intersection of Dunn Street and FM 1936.				
GAINES COUNTY --- 0.5 W SEMINOLE [32.72, -102.66], 0.5 N SEMINOLE [32.73, -102.65], 0.5 E SEMINOLE [32.72, -102.64], 0.5 S SEMINOLE [32.71, -102.65]				
	04/11/09 19:25 CST		0	Flash Flood (due to Heavy Rain)
	04/11/09 20:00 CST		0	Source: Law Enforcement

Storm Data and Unusual Weather Phenomena - April 2009

Location	Date/Time	Deaths & Injuries	Property & Crop Dmg	Event Type and Details
----------	-----------	-------------------	---------------------	------------------------

Flooding was observed in Seminole near the local Pizza Hut.

GLASSCOCK COUNTY --- 0.7 N LEES [32.09, -101.48]

	04/11/09 19:34 CST	0		Hail (1.00 in)
	04/11/09 19:36 CST	0		Source: Trained Spotter

The duration of the hail was estimated based on radar.

MIDLAND COUNTY --- 3.2 ENE (MAF) MIDLAND INTL [31.95, -102.15], 4.1 ENE (MAF) MIDLAND INTL [31.95, -102.14], 4.1 SW MIDLAND [31.97, -102.14], 3.9 NE (MAF) MIDLAND INTL [31.96, -102.15]

	04/11/09 19:56 CST	0		Flash Flood (due to Heavy Rain)
	04/11/09 20:45 CST	0		Source: Amateur Radio

An amateur radio operator observed 3 to 6 inches of flowing water near the intersection of I-20 and TX 158. There was also other significant flooding near the same area.

GLASSCOCK COUNTY --- 1.2 E GARDEN CITY [31.87, -101.48]

	04/11/09 20:30 CST	0		Hail (1.00 in)
	04/11/09 20:33 CST	0		Source: Law Enforcement

The duration of the hail was estimated for this event.

HOWARD COUNTY --- 0.6 W BIG SPRING [32.25, -101.48]

	04/11/09 20:31 CST	0		Hail (0.88 in)
	04/11/09 20:33 CST	0		Source: Trained Spotter

TERRELL COUNTY --- 32.9 NNE DRYDEN [30.49, -101.91]

	04/11/09 22:45 CST	0		Hail (0.88 in)
	04/11/09 22:47 CST	0		Source: Public

On April 11, 2009, a surface high northeast of the region resulted in easterly upslope flow over most of the CWA. Meanwhile, a mid to upper level low near Southern California approached the area from the west. Although the deepest moisture was confined to the Gulf Coast (due to the previously mentioned surface high) there was enough moisture convergence along a stalled surface boundary and dryline. Most unstable CAPE values along these features of 1000 j/kg and 0-6 km bulk shear magnitudes of 60 kt allowed for severe storms to develop as the dynamics neared the area during the late afternoon and early evening hours. A Severe Thunderstorm Watch was issued from 1520-2300 local.

Storm Data and Unusual Weather Phenomena - April 2009

Location	Date/Time	Deaths & Injuries	Property & Crop Dmg	Event Type and Details
----------	-----------	-------------------	---------------------	------------------------



A power pole was snapped near its base as the tornado passed near its location. This photo was taken by Pat Vesper, WCM Midland WFO, during the damage survey.

PECOS COUNTY --- IRAAN [30.92, -101.88]

04/16/09 14:12 CST	0		Hail (0.88 in)
04/16/09 14:17 CST	0		Source: Fire Department/Rescue

The duration of the hail was estimated for this event.

BORDEN COUNTY --- 1.2 W GAIL [32.77, -101.45]

04/16/09 15:55 CST	0		Hail (0.75 in)
04/16/09 16:57 CST	0		Source: Emergency Manager

BORDEN COUNTY --- 1.2 W GAIL [32.77, -101.45]

04/16/09 16:15 CST	0		Hail (1.25 in)
04/16/09 16:18 CST	0		Source: Public

MIDLAND COUNTY --- 4.9 NE MIDLAND [32.05, -102.02]

04/16/09 16:25 CST	0		Hail (0.75 in)
04/16/09 16:30 CST	0		Source: Public

BORDEN COUNTY --- 18.0 NE GAIL [32.95, -101.21]

04/16/09 16:30 CST	0		Hail (1.00 in)
04/16/09 16:33 CST	0		Source: Trained Spotter

Storm Data and Unusual Weather Phenomena - April 2009

Location	Date/Time	Deaths & Injuries	Property & Crop Dmg	Event Type and Details
MARTIN COUNTY --- STANTON [32.13, -101.80]				
	04/16/09 16:41 CST		0	Hail (0.88 in)
	04/16/09 16:43 CST		0	Source: Public
BORDEN COUNTY --- 13.0 NE GAIL [32.90, -101.27]				
	04/16/09 16:45 CST		0	Hail (1.00 in)
	04/16/09 16:47 CST		0	Source: Trained Spotter
BORDEN COUNTY --- 13.0 NE GAIL [32.90, -101.27]				
	04/16/09 16:45 CST		0	Hail (1.00 in)
	04/16/09 16:50 CST		0	Source: Trained Spotter
A trained spotter reported quarter size hail covering the ground 13 miles northeast of Gail.				
MARTIN COUNTY --- STANTON [32.13, -101.80]				
	04/16/09 16:48 CST		0	Hail (0.88 in)
	04/16/09 16:53 CST		0	Source: Public
ECTOR COUNTY --- 3.2 ENE GARDENDALE [32.02, -102.37]				
	04/16/09 18:04 CST		0	Hail (1.00 in)
	04/16/09 18:05 CST		0	Source: Trained Spotter
MARTIN COUNTY --- 0.9 NW LENORAH [32.31, -101.88]				
	04/16/09 19:10 CST		0	Hail (1.50 in)
	04/16/09 19:13 CST		0	Source: Trained Spotter
MARTIN COUNTY --- 0.9 NW LENORAH [32.31, -101.88]				
	04/16/09 19:15 CST		0	Hail (1.00 in)
	04/16/09 19:20 CST		0	Source: Trained Spotter
MARTIN COUNTY --- 2.2 SW ACKERLY [32.50, -101.75]				
	04/16/09 19:30 CST		0	Hail (2.75 in)
	04/16/09 19:33 CST		0	Source: Public
HOWARD COUNTY --- (BGS)BIG SPRING ARPT [32.30, -101.43]				
	04/16/09 19:43 CST		0	Hail (0.75 in)
	04/16/09 19:45 CST		0	Source: Public
HOWARD COUNTY --- (BGS)BIG SPRING ARPT [32.30, -101.43]				
	04/16/09 19:45 CST		0	Thunderstorm Wind (MG 54 kt)
	04/16/09 19:50 CST		0	Source: AWOS
MARTIN COUNTY --- 4.0 W TARZAN [32.30, -102.04]				
	04/16/09 19:49 CST		0	Hail (0.88 in)
	04/16/09 19:51 CST		0	Source: NWS Employee
MARTIN COUNTY --- 7.0 W TARZAN [32.30, -102.09]				
	04/16/09 19:49 CST		0	Hail (0.75 in)
	04/16/09 19:54 CST		0	Source: NWS Employee
ANDREWS COUNTY --- 4.8 S ANDREWS [32.25, -102.55]				
	04/16/09 19:50 CST		0	Hail (1.00 in)
	04/16/09 19:51 CST		0	Source: Trained Spotter
MARTIN COUNTY --- 8.0 E FLOWER GROVE [32.50, -101.74]				
	04/16/09 20:00 CST		0	Hail (1.75 in)
	04/16/09 20:04 CST		0	Source: Public

Storm Data and Unusual Weather Phenomena - April 2009

Location	Date/Time	Deaths & Injuries	Property & Crop Dmg	Event Type and Details
MARTIN COUNTY --- 4.5 SW TARZAN [32.25, -102.02], 2.1 W LENORAH [32.30, -101.91]				
	04/16/09 20:20 CST		40K	Tornado (EF1, L: 7.59 mi , W: 300 yd)
	04/16/09 20:36 CST		0	Source: COOP Observer
<p>This tornado first did damage to 7 power poles about 4.5 miles southwest of Tarzan; this was confirmed by contacting the utility company in the area the following day. The estimated time of damage according to radar at this location was around 2020 CST. At 2032 CST, the tornado then tracked east northeastward and impacted a COOP observer's farm about 3 miles southeast of Tarzan, TX damaging multiple pieces of farm equipment, storage tanks and removing 3 roofs from multiple structures. It then continued on its same path snapping 3 power poles about a mile west of Lenorah, TX. The estimated time of damage according to radar was sometime around 2036 CST. This was the last known location of the tornado, although another tornado redeveloped with the same supercell about 20 minutes later. Please see the attached images.</p>				
CRANE COUNTY --- 15.0 N CRANE J BAR ARPT [31.75, -102.53]				
	04/16/09 20:30 CST		0	Hail (1.75 in)
	04/16/09 20:33 CST		0	Source: Trained Spotter
MARTIN COUNTY --- 2.0 E LENORAH [32.30, -101.84]				
	04/16/09 20:30 CST		0	Hail (0.88 in)
	04/16/09 20:33 CST		0	Source: NWS Employee
MARTIN COUNTY --- 4.0 SSE TARZAN [32.25, -101.94]				
	04/16/09 20:40 CST		0	Funnel Cloud
	04/16/09 20:45 CST		0	Source: Trained Spotter
<p>A large funnel cloud was reported by a trained spotter around 2045 CST about 5 miles SSE of Tarzan. It is possible that the funnel was actually a tornado considering the damage to the power poles done upstream.</p>				
MIDLAND COUNTY --- 1.0 S MIDLAND [31.99, -102.08]				
	04/16/09 20:45 CST		0	Hail (0.88 in)
	04/16/09 20:48 CST		0	Source: Public
HOWARD COUNTY --- 4.7 SW FAIRVIEW [32.30, -101.58], 1.7 SSE LUTHER [32.43, -101.45]				
	04/16/09 20:53 CST		83K	Tornado (EF2, L: 11.31 mi , W: 450 yd)
	04/16/09 21:30 CST		0	Source: NWS Storm Survey
<p>At 1953 CST, a trained weather spotter reported a tornado about 5 miles northwest of Big Spring. The NWS Storm Survey confirmed two snapped power poles, minor tree damage and an empty oil pump storage tank knocked over near this location. The tornado then tracked north northeastward and bent an 80 foot aluminum radio tower in half towards the east and snapped two additional power poles due to damaging northerly winds on its northwest flank; this occurred sometime around 2000 CST. At 2005 CST, another trained spotter reported a tornado near the town of Fairview, TX. The damage survey concluded this was a valid report, as the tornado began to turn right snapping multiple power poles and damaging a 12'X10' storage shed anchored 2-3 feet in the ground along the way. The storage shed was tossed east northeast approximately 30 yards, indicating the tornado passed north of the residence. As the tornado continued eastward just north of Farm to Market Road 2230 east of Fairview, a significant line of power pole damage (2 miles) was observed. There were a total of 28 poles snapped towards the south around 2015 CST. Twenty of these were distribution poles and 8 of these were larger transmission poles. The tornado then possibly weakened and turned left to the northeast. On its way, it damaged another storage shed and a home's north side windows approximately 4 miles northeast of Fairview. The last approximated time for tornadic wind damage was around 2030 CST. The path recorded for this event is not the exact path the tornado actually took. Please see attached image.</p>				
MARTIN COUNTY --- 5.6 ENE LENORAH [32.32, -101.78], 9.2 SSE ACKERLY [32.39, -101.68]				
	04/16/09 20:55 CST		7K	Tornado (EF1, L: 7.42 mi , W: 200 yd)
	04/16/09 21:12 CST		0	Source: NWS Storm Survey
<p>A damage survey conducted across west central Martin County concluded that there was a tornado that tracked northeastward for approximately 7 miles, doing minor damage on the way. The first signs of damage were observed at a residence where a 10'X6'X6' wooden storage structure was blown to the east northeast about 60 feet. According to radar imagery, this was near 2055 PM CST. In addition, minor roof damage was done to the home by west winds and the family's trampoline was wrapped around a nearby tree in the backyard. The tornado then continued northeastward where it passed just to the north of two power poles that were snapped at the ground by damaging west winds sometime around 2112 PM CST. The closest estimate of the path taken by the tornado has been attached.</p>				
PECOS COUNTY --- 7.0 W BAKERSFIELD [30.88, -102.40]				
	04/16/09 21:10 CST		0	Hail (1.00 in)
	04/16/09 21:14 CST		0	Source: Law Enforcement

Storm Data and Unusual Weather Phenomena - April 2009

Location	Date/Time	Deaths & Injuries	Property & Crop Dmg	Event Type and Details
----------	-----------	-------------------	---------------------	------------------------

The duration and time of this report was estimated from radar. The report was called in after the storm had passed at 2130 CST.

HOWARD COUNTY --- 0.6 W BIG SPRING [32.25, -101.48]

	04/16/09 21:25 CST	0		Hail (0.88 in)
	04/16/09 21:27 CST	0		Source: Trained Spotter

HOWARD COUNTY --- 0.6 W BIG SPRING [32.25, -101.48]

	04/16/09 21:27 CST	0		Hail (1.00 in)
	04/16/09 21:34 CST	0		Source: Trained Spotter

PECOS COUNTY --- 8.3 W BAKERSFIELD [30.89, -102.42]

	04/16/09 21:30 CST	0		Hail (1.00 in)
	04/16/09 21:33 CST	0		Source: Law Enforcement

HOWARD COUNTY --- 0.9 E KNOTT [32.40, -101.63], 2.9 SSE KNOTT [32.36, -101.62], 2.9 SSE KNOTT [32.36, -101.63], 0.5 SE KNOTT [32.40, -101.64]

	04/16/09 21:36 CST	0		Flash Flood (due to Heavy Rain)
	04/16/09 23:36 CST	0		Source: Law Enforcement

The Texas Department of Transportation reported 4 feet of water over FM 2230 eleven miles northwest of Big Spring. The highway was closed due to the flooding.

PECOS COUNTY --- 43.0 E FT STOCKTON [30.88, -102.14]

	04/16/09 21:45 CST	0		Hail (0.88 in)
	04/16/09 21:46 CST	0		Source: Law Enforcement

HOWARD COUNTY --- 0.9 SW COAHOMA [32.29, -101.31]

	04/16/09 21:52 CST	0		Hail (1.00 in)
	04/16/09 21:54 CST	0		Source: Trained Spotter

MITCHELL COUNTY --- 7.0 W COLORADO CITY [32.40, -100.97]

	04/16/09 22:00 CST	0		Funnel Cloud
	04/16/09 22:05 CST	0		Source: Public

MITCHELL COUNTY --- 0.9 NE WESTBROOK [32.36, -101.01]

	04/16/09 22:35 CST	0		Hail (1.00 in)
	04/16/09 22:37 CST	0		Source: Fire Department/Rescue

MITCHELL COUNTY --- 1.7 W COLORADO CITY [32.40, -100.88], 2.5 W COLORADO CITY [32.40, -100.89], 2.6 W COLORADO CITY [32.40, -100.89], 2.0 WNW COLORADO CITY [32.41, -100.88]

	04/16/09 23:30 CST	0		Flash Flood (due to Heavy Rain)
	04/17/09 01:30 CST	0		Source: Law Enforcement

The sheriff's office reported the service road between the prison and river bridge completely inundated.

A mid to upper level closed low was located over southwest Utah the day of the event. Near the surface, a quasi dryline was located from a line near the mountains of west Texas to the eastern NM/TX border. Dewpoints in the low to mid 50 F range resulted in moderate surface based instability east of the dryline during the early evening hours. The upper dynamics combined with the surface convergence along the dryline led to the development of severe weather as the deep layer shear increased with the approach of the aforementioned feature. There was also a brief window for tornadic storms as low level profiles became increasingly backed east of the dryline as height falls increased ahead of the upper trough just west of the region. A tornado watch was issued from 1642-2400 local.

Storm Data and Unusual Weather Phenomena - April 2009

Location	Date/Time	Deaths & Injuries	Property & Crop Dmg	Event Type and Details
----------	-----------	-------------------	---------------------	------------------------



Image showing the true estimated path of the tornado (red line) according to damage points. Please see the additional attached photos of the damage done to the farm. This image was produced by the Storm Data Focal point for the Midland WFO, Ryan Barnes.

PECOS COUNTY --- 6.0 E BAKERSFIELD [30.89, -102.18]

04/26/09 14:00 CST	0	Hail (1.00 in)
04/26/09 14:02 CST	0	Source: Public

PECOS COUNTY --- 8.6 SE BAKERSFIELD [30.79, -102.18]

04/26/09 14:30 CST	0	Hail (1.25 in)
04/26/09 14:40 CST	0	Source: Public

The hail nearly covered the ground.

PECOS COUNTY --- 1.5 NNE SHEFFIELD [30.69, -101.82]

04/26/09 15:10 CST	0	Hail (1.75 in)
04/26/09 15:12 CST	0	Source: Public

PECOS COUNTY --- 1.4 ENE SHEFFIELD [30.68, -101.81]

04/26/09 15:20 CST	0	Hail (1.00 in)
04/26/09 15:22 CST	0	Source: Law Enforcement

PECOS COUNTY --- 1.4 NNE SHEFFIELD [30.69, -101.82]

04/26/09 16:15 CST	0	Hail (0.88 in)
04/26/09 16:17 CST	0	Source: COOP Observer

PECOS COUNTY --- 1.5 NNE SHEFFIELD [30.69, -101.82]

04/26/09 16:30 CST	17.50K	Hail (2.75 in)
04/26/09 16:33 CST	0	Source: COOP Observer

Storm Data and Unusual Weather Phenomena - April 2009

Location	Date/Time	Deaths & Injuries	Property & Crop Dmg	Event Type and Details
The observer's windshield was broken by the hail, along with 4 other vehicles receiving damage. The roofs of a few homes were also damaged by the large hail.				
PECOS COUNTY --- 1.5 NNE SHEFFIELD [30.69, -101.82]				
	04/26/09 16:33 CST	0		Hail (1.75 in)
	04/26/09 16:35 CST	0		Source: Trained Spotter
PECOS COUNTY --- 5.7 NNW SHEFFIELD [30.74, -101.88]				
	04/26/09 16:35 CST	0		Hail (2.75 in)
	04/26/09 16:37 CST	0		Source: Law Enforcement
SCURRY COUNTY --- 0.6 W DUNN [32.57, -100.89]				
	04/26/09 16:38 CST	0		Hail (1.00 in)
	04/26/09 16:39 CST	0		Source: Fire Department/Rescue
PECOS COUNTY --- 1.6 NNE SHEFFIELD [30.69, -101.82], 1.7 N SHEFFIELD [30.70, -101.83], 1.3 N SHEFFIELD [30.69, -101.83], 1.5 NNE SHEFFIELD [30.69, -101.82]				
	04/26/09 17:00 CST	0		Flash Flood (due to Heavy Rain)
	04/26/09 18:00 CST	0		Source: Trained Spotter
Spotters reported 6 inches of flowing water across roadways. No damage or injuries were reported.				
PECOS COUNTY --- 1.5 NNE SHEFFIELD [30.69, -101.82]				
	04/26/09 17:20 CST	0		Hail (1.00 in)
	04/26/09 17:23 CST	0		Source: Trained Spotter
REAGAN COUNTY --- 5.5 WSW STILES [31.38, -101.67]				
	04/26/09 20:15 CST	0		Hail (0.88 in)
	04/26/09 20:20 CST	0		Source: Trained Spotter
REAGAN COUNTY --- 5.5 WSW STILES [31.38, -101.67]				
	04/26/09 20:20 CST	0		Hail (1.00 in)
	04/26/09 20:22 CST	0		Source: Trained Spotter
MIDLAND COUNTY --- 4.2 SE WARFIELD [31.87, -102.19]				
	04/27/09 01:00 CST	0		Hail (1.75 in)
	04/27/09 01:02 CST	0		Source: Public
MIDLAND COUNTY --- 6.0 SSE (MAF) MIDLAND INTL [31.86, -102.14]				
	04/27/09 01:08 CST	0		Hail (1.25 in)
	04/27/09 01:10 CST	0		Source: Public
GLASSCOCK COUNTY --- 12.5 SSE GARDEN CITY [31.70, -101.42]				
	04/27/09 03:05 CST	0		Hail (1.00 in)
	04/27/09 03:10 CST	0		Source: Public
The time of this report was estimated.				
A well defined dryline was apparent just east of a Roswell, NM to west of Marfa, TX line on this day. Dewpoints east of the dryline were in the upper 50s to mid 60s F. Large scale lift increased over the area as a series of mid level shortwave troughs and upper level jet dynamics moved overhead. Surface convergence and daytime heating, combined with the previous, resulted in severe thunderstorms during the afternoon hours.				
SCURRY COUNTY --- 0.2 S SNYDER WINSTON ARPT [32.70, -100.95]				
	04/29/09 11:32 CST	0		Hail (1.75 in)
	04/29/09 11:34 CST	0		Source: Trained Spotter
SCURRY COUNTY --- 0.7 N WINSTON [32.71, -100.92]				

Storm Data and Unusual Weather Phenomena - April 2009

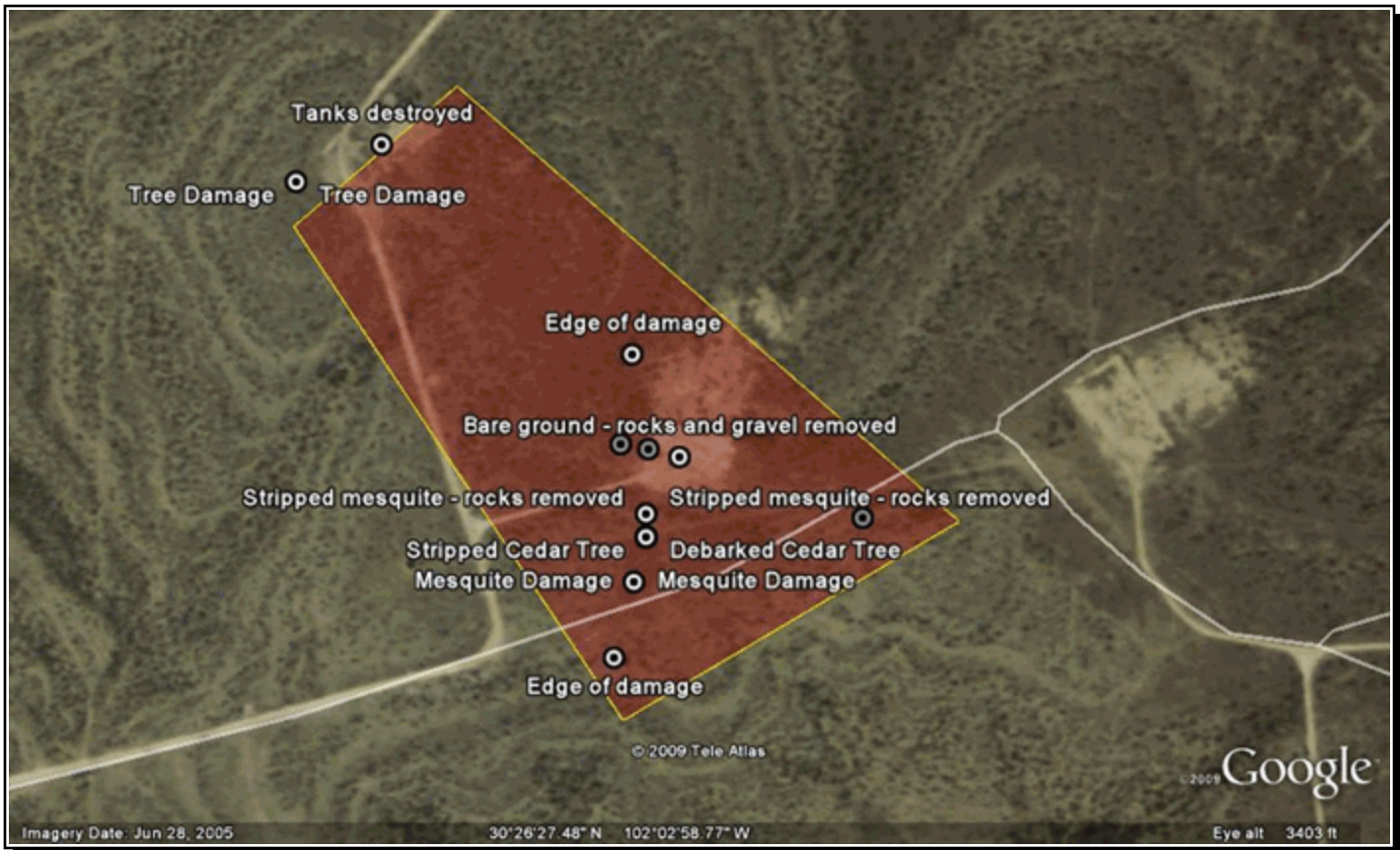
Location	Date/Time	Deaths & Injuries	Property & Crop Dmg	Event Type and Details
	04/29/09 11:37 CST		0	Hail (0.88 in)
	04/29/09 11:38 CST		0	Source: Trained Spotter
<hr/>				
SCURRY COUNTY --- 0.7 N WINSTON [32.71, -100.92]				
	04/29/09 11:38 CST		0	Hail (0.88 in)
	04/29/09 11:39 CST		0	Source: Trained Spotter
<hr/>				
BORDEN COUNTY --- 12.0 NNW GAIL [32.93, -101.51]				
	04/29/09 13:24 CST		0	Hail (0.88 in)
	04/29/09 13:26 CST		0	Source: Trained Spotter
<hr/>				
The duration of the hail was estimated for this event.				
<hr/>				
PECOS COUNTY --- 10.0 W BAKERSFIELD [30.88, -102.45]				
	04/29/09 13:40 CST		0	Funnel Cloud
	04/29/09 13:42 CST		0	Source: Trained Spotter
<hr/>				
PECOS COUNTY --- 10.0 W BAKERSFIELD [30.88, -102.45]				
	04/29/09 13:40 CST		0	Funnel Cloud
	04/29/09 13:43 CST		0	Source: Trained Spotter
<hr/>				
The duration of the funnel cloud was estimated.				
<hr/>				
PECOS COUNTY --- 1.5 WNW BAKERSFIELD [30.89, -102.30]				
	04/29/09 14:15 CST		0	Hail (1.00 in)
	04/29/09 14:20 CST		0	Source: Trained Spotter
<hr/>				
PECOS COUNTY --- 9.9 WNW IRAAN [30.96, -102.04]				
	04/29/09 14:45 CST		0	Hail (1.75 in)
	04/29/09 14:48 CST		0	Source: Broadcast Media
<hr/>				
The duration of the hail was estimated for this event.				
<hr/>				
PECOS COUNTY --- 11.0 SSE BAKERSFIELD [30.73, -102.22]				
	04/29/09 15:03 CST		0	Hail (2.00 in)
	04/29/09 15:05 CST		0	Source: Trained Spotter
<hr/>				
PECOS COUNTY --- 8.6 SE BAKERSFIELD [30.79, -102.18]				
	04/29/09 15:33 CST		0	Hail (0.75 in)
	04/29/09 15:35 CST		0	Source: Trained Spotter
<hr/>				
TERRELL COUNTY --- 27.7 NE DRYDEN [30.37, -101.84]				
	04/29/09 15:54 CST		0	Hail (1.75 in)
	04/29/09 15:56 CST		0	Source: Public
<hr/>				
The duration of the hail was estimated for this event.				
<hr/>				
TERRELL COUNTY --- 27.5 N DRYDEN [30.44, -102.05], 27.3 N DRYDEN [30.44, -102.05]				
	04/29/09 16:00 CST		5K	Tornado (EF2, L: 0.32 mi , W: 300 yd)
	04/29/09 16:04 CST		0	Source: NWS Storm Survey
<hr/>				
Although a tornado was never reported during the time of issuance, later public reports and a NWS Storm Survey indicated in fact there was a tornado. Based on radar estimates, tornadic damage began sometime around 4 PM CST about 28 miles north of Dryden, TX. This is where a 30 gallon fiberglass tank was destroyed, in addition to another chemical tank. Pieces of the fiberglass tank were found downwind. A set of metal stairs that appeared to have been welded to the tank were also found downwind and were no longer attached to the tank. As the tornado tracked southeastward, its debris field of rocks, gravel and tree limbs stripped the paint off of a recently painted 300 gallon storage tank. The tornado continued on its path and weakened after stripping some cedar trees sometime around 404 PM CST. Please see the attached images for damage photos and a detailed image of the tornado's damage path.				
<hr/>				
TERRELL COUNTY --- 26.9 NE (P07)SANDERSON [30.44, -102.10]				

Storm Data and Unusual Weather Phenomena - April 2009

Location	Date/Time	Deaths & Injuries	Property & Crop Dmg	Event Type and Details
	04/29/09 16:15 CST		66K	Hail (4.25 in)
	04/29/09 16:17 CST		0	Source: Public
<hr/>				
TERRELL COUNTY --- 31.4 NNE DRYDEN [30.44, -101.85]	04/29/09 16:34 CST		0	Hail (4.25 in)
	04/29/09 16:36 CST		0	Source: Fire Department/Rescue

The time and duration of the hail was estimated according to radar. The fire department arrived after the hail had fallen.

During the afternoon of April 29, 2009, a surface low developed near Raton Mesa with a dryline extending from the eastern NM/TX border to the Davis Mountains of west Texas. Strong daytime heating resulted in mixed layer CAPE values near 3000 j/kg. As a strong southern stream mid-level jet max approached, favored kinematic profiles lead to the rapid development of supercells across southwest Texas. Although coverage remained fairly isolated due to weak upper level support, upslope/backed flow did result in at least one tornado being observed.



This image shows the estimated path (red shaded area) the tornado took according to the damage survey. The image was produced using Google Earth by Pat Vesper, WCM Midland WFO.