

**WFO Midland, Texas**

**MONTHLY REPORT OF HYDROLOGIC CONDITIONS**

REPORT FOR:

MONTH

**November**

YEAR

**2021**

SIGNATURE

**J. DeBerry**

In Charge of HSA

DATE

**December 15, 2021**

TO: Hydrometeorological Information Center, W/OH2  
NOAA / National Weather Service  
1325 East West Highway, Room 7230  
Silver Spring, MD 20910-3283

*When no flooding occurs, include miscellaneous river conditions, such as significant rises, record low stages, ice conditions, snow cover, droughts, and hydrologic products issued (NWS Instruction 10-924)*

An X inside this box indicates that no river flooding occurred within this hydrologic service area.

The drought continued in November under La Nina, with meager rainfall and no notable hydrologic activity. As of 1 December, Midland International Air and Space Port has gone 61 days without measurable rainfall.

Precipitation amounts from area ASOS's:

City	ASOS ID	November	October
Carlsbad, NM	KCNM	0.14"	0.15"
Fort Stockton	KFST	0.07"	0.01"
Guadalupe Pass	KGDP	M	0.00"
Midland Int'l	KMAF	T	0.05"
Odessa	KODO	T	T
Terrell County	K6R6	0.00"	0.02"
Wink	KINK	T	T

Precipitation amounts from area AWOS's:

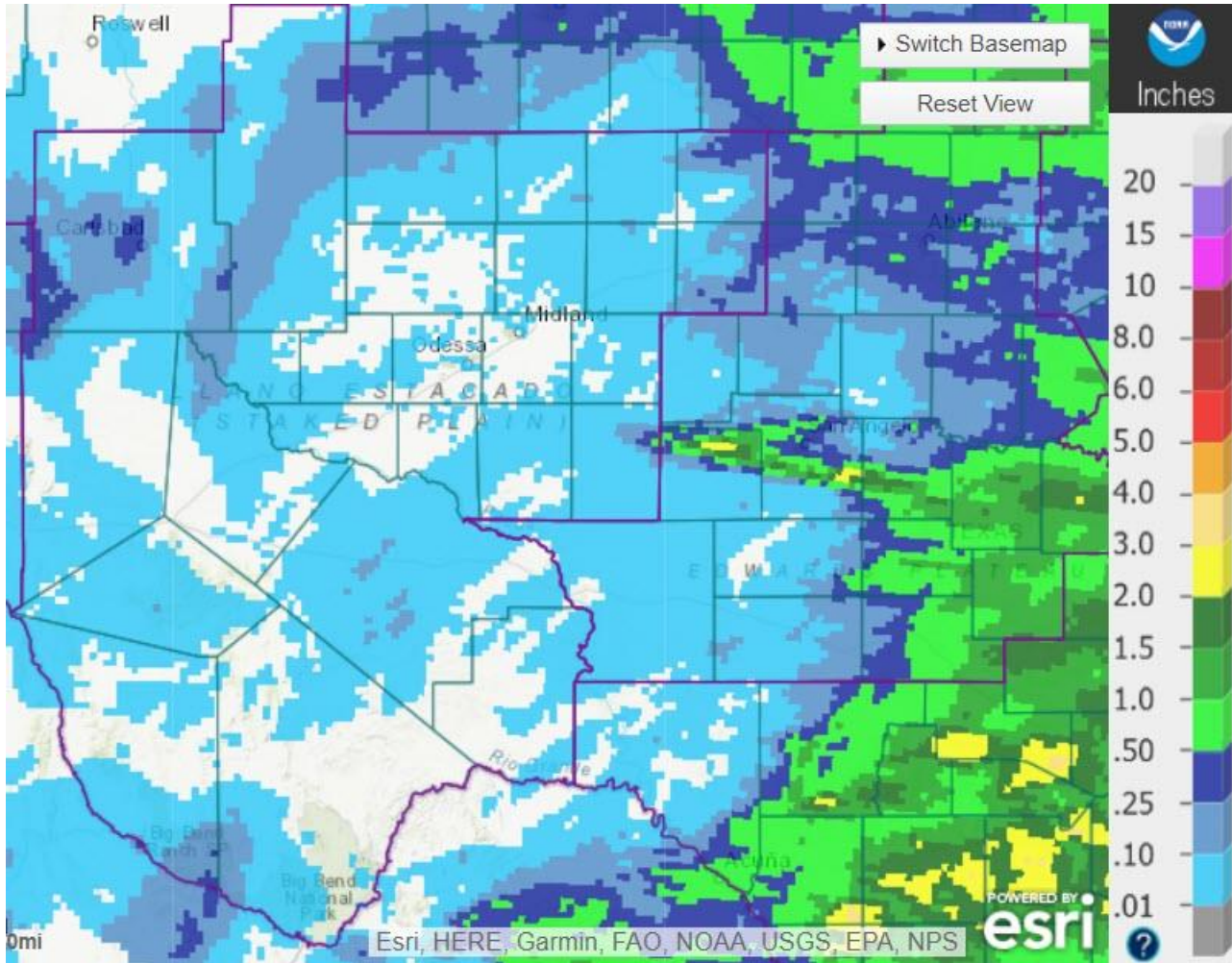
City	AWOS ID	November	October
Alpine	KE38	0.05"	0.09"
Andrews County	KE11	0.00"	0.06"
Artesia, NM	KATS	0.00"	0.32'
Big Spring	KBGP	0.03"	0.01"
Culberson County	KVHN	0.09"	M
Gaines County	KGNC	0.00"	0.01"
Hobbs, NM	KHOB	0.00"	0.18"
Lamesa Municipal	KLUV	0.00"	0.02"
Marfa	KMRF	0.09"	0.04"
Midland Airpark	KMDD	0.00"	0.05"
Pecos County	KPEQ	0.03"	M
Presidio County	KPRS	0.14"	M

Reagan County	KE41	M	M
Snyder	KSNK	0.06"	0.10"

Some other locations in the HSA that received notable amounts of precipitation for November were:

- Caprock, Lea County 0.31"
- Dog Canyon, Culberson County 0.34"
- Queen, Eddy County 0.36"
- Brantley Dam, Eddy County 0.42"

84 locations reported rainfall for the month of November, for an HSA average of 0.07".



November Precipitation

Normal November precipitation for Midland International Air and Space Port is 0.72". Total precipitation for 2021 ending December 1<sup>st</sup> was 13.72", or 0.78" above normal. Normal yearly rainfall is 13.51".

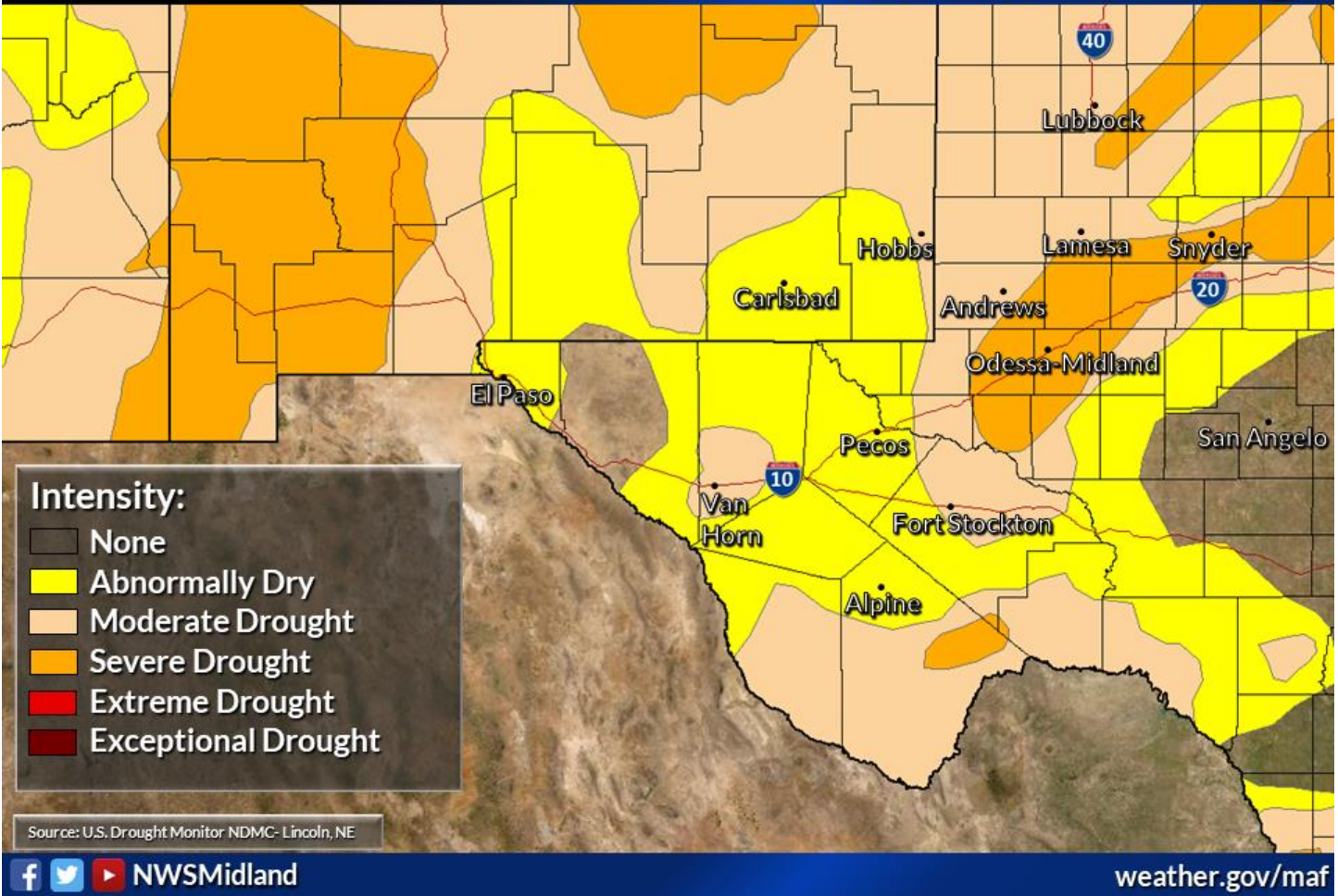
# Latest Drought Conditions

Weather Forecast Office  
Midland/Odessa, TX



Valid 23 November 2021

Issued December 1, 2021 6:17 PM CT



Source: U.S. Drought Monitor NDMC- Lincoln, NE

[f](#) [t](#) [v](#) NWSMidland

[weather.gov/maf](http://weather.gov/maf)

Reservoir levels across the HSA averaged 60.9% of conservation capacity as of December 1<sup>st</sup>:

Reservoir (County, State)	December 1 Conserv Cap (%)	November 1 Conserv Cap (%)
JB Thomas (Scurry, TX)	41.3	43.0
Colorado City (Mitchell, TX)	75.2	77.2
Champion Creek (Mitchell, TX)	71.0	72.1
Natural Dam Salt Lake (Howard, TX)	48.4	48.3
Moss Creek (Howard, TX)	81.0	75.0
Brantley (Eddy, NM)	56.0	55.0
Avalon (Eddy, NM)	41.0	24.0
Red Bluff (Reeves, TX)	73.4	73.2

## Non-Routine Products Issued for November:

Flash Flood Watches (FFA): 0  
 Flash Flood Warnings (FFW): 0  
 Flash Flood Statements (FFS): 0  
 Flood Advisories/Statements (FLS): 0

Flood Warnings (FLW): 0

**Total Non-Routine Products Issued: 0**

**cc: email: COE ABQ, HIC, IBWC ELP, IBWC PRD, LCRA, NWS ABQ, NWS EPZ, NWS LBB,  
NWS MAF, NWS SJT, SRH, TAMU, TCEQ, USGS CNM, USGS SJT, WGRFC**