

WFO Midland, Texas

MONTHLY REPORT OF HYDROLOGIC CONDITIONS

REPORT FOR:

MONTH

October

YEAR

2020

SIGNATURE

J. DeBerry

In Charge of HSA

DATE

November 15, 2020

TO: Hydrometeorological Information Center, W/OH2
NOAA / National Weather Service
1325 East West Highway, Room 7230
Silver Spring, MD 20910-3283

When no flooding occurs, include miscellaneous river conditions, such as significant rises, record low stages, ice conditions, snow cover, droughts, and hydrologic products issued (NWS Instruction 10-924)

An X inside this box indicates that no river flooding occurred within this hydrologic service area.

The drought continued in October under La Nina, as reflected in meager rainfall totals. A winter storm hit the region late in the month, but yielded little in the way of precipitation.

Precipitation amounts from area ASOS's:

City	ASOS ID	October	September
Carlsbad, NM	KCNM	0.02"	0.21"
Fort Stockton	KFST	0.00"	T
Guadalupe Pass	KGDP	0.00"	0.53"
Midland Int'l	KMAF	0.03"	0.20"
Odessa	KODO	T	T
Terrell County	K6R6	0.00"	0.01"
Wink	KINK	0.00"	0.02"

Precipitation amounts from area AWOS's:

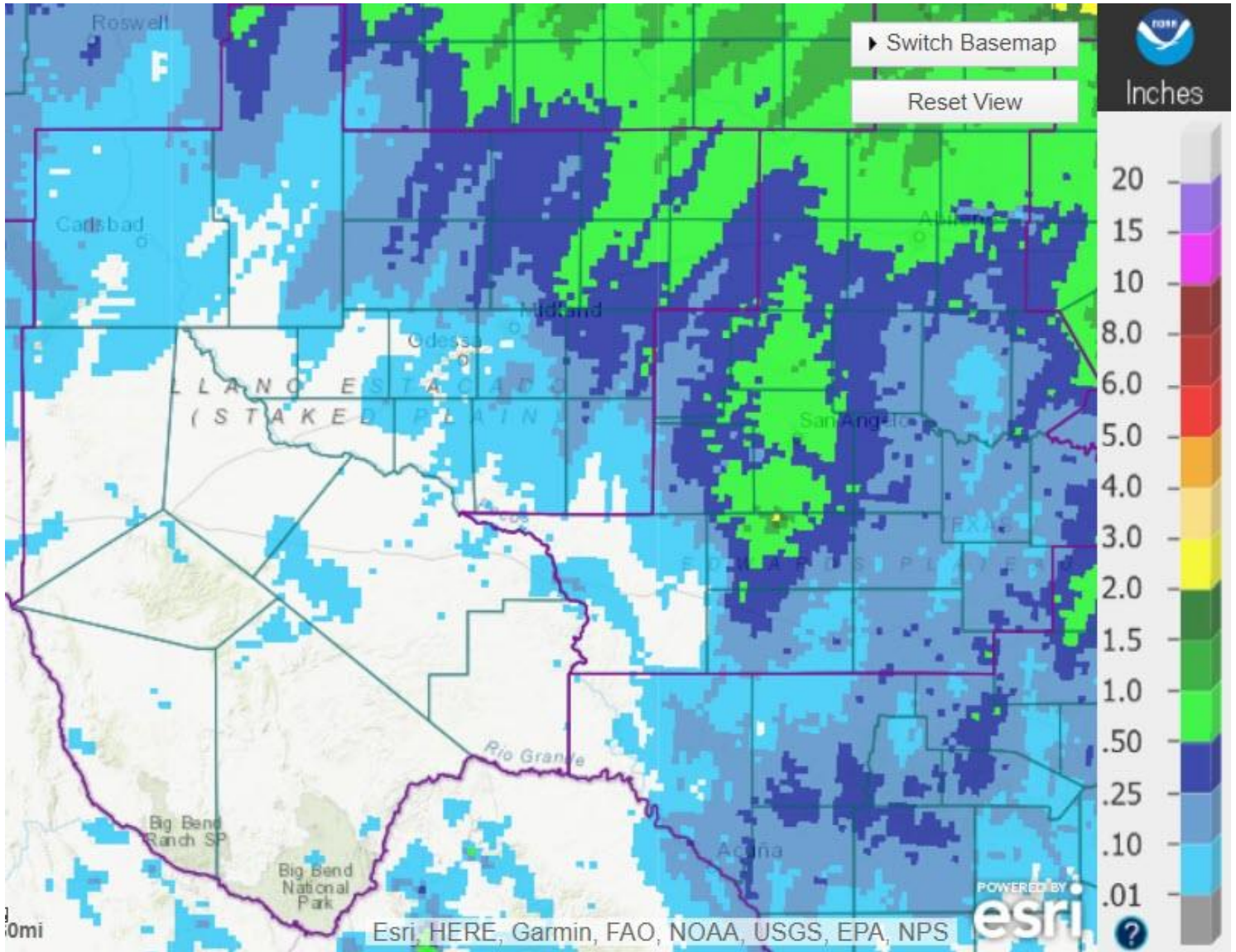
City	AWOS ID	October	September
Alpine	KE38	0.00"	0.06"
Andrews County	KE11	0.05"	0.14"
Artesia, NM	KATS	0.03"	0.36"
Big Spring	KBGP	0.23"	0.49"
Culberson County	KVHN	0.00"	M
Gaines County	KGNC	0.00"	0.00"
Hobbs, NM	KHOB	0.01"	0.61"
Lamesa Municipal	KLUV	0.23"	M
Marfa	KMRF	T	0.19"
Midland Airpark	KMDD	0.00"	0.46"
Pecos County	KPEQ	0.00"	0.20"
Presidio County	KPRS	0.07"	0.01"
Reagan County	KE41	0.01"	M

Snyder	KSNK	0.54"	1.39"
--------	------	-------	-------

Some other locations in the HSA that received notable amounts of precipitation for October were:

Seminole, Gaines County	0.52"
Colorado City, Mitchell County	0.78"
Gail, Borden County	0.88"
Fluvanna, Scurry County	1.34"

102 locations reported rainfall for the month of October, for an HSA average of 0.17".



October Precipitation

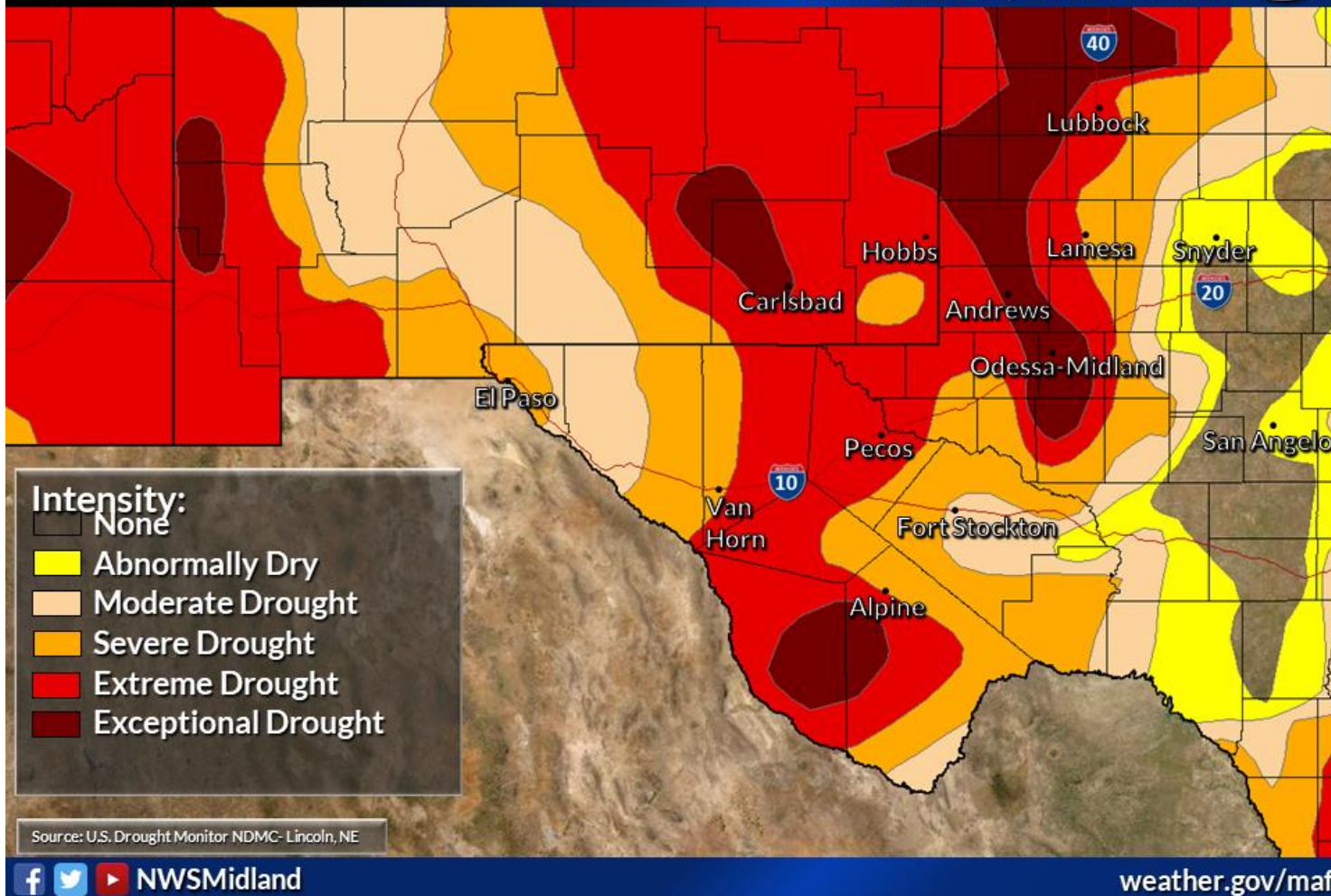
Normal October precipitation for Midland International Air and Space Port is 1.73". Total precipitation for the airport for the year ending November 1st was 6.87", or 6.44" below normal.

Latest Drought Conditions

Valid 29 October 2020

Weather Forecast Office
Midland/Odessa, TX

Issued October 31, 2020 8:52 AM CT



Reservoir levels across the HSA averaged 39.0% of conservation capacity as of November 1st:

Reservoir (County, State)	November 1 Conserv Cap (%)	October 1 Conserv Cap (%)
JB Thomas (Scurry, TX)	16.0	18.5
Colorado City (Mitchell, TX)	38.2	35.7
Champion Creek (Mitchell, TX)	59.9	60.0
Natural Dam Salt Lake (Howard, TX)	48.4	48.4
Moss Creek (Howard, TX)	57.0	57.0
Brantley (Eddy, NM)	9.0	28.0
Avalon (Eddy, NM)	20.0	26.0
Red Bluff (Reeves, TX)	46.4	50.0

Non-Routine Products Issued for October:

Flash Flood Watches (FFA): 5
Flash Flood Warnings (FFW): 0
Flash Flood Statements (FFS): 0

Flood Advisories/Statements (FLS): 0

Flood Warnings (FLW): 0

Total Non-Routine Products Issued: 5

**cc: email: COE ABQ, HIC, IBWC ELP, IBWC PRD, LCRA, NWS ABQ, NWS EPZ, NWS LBB,
NWS MAF, NWS SJT, SRH, TAMU, TCEQ, USGS CNM, USGS SJT, WGRFC**