

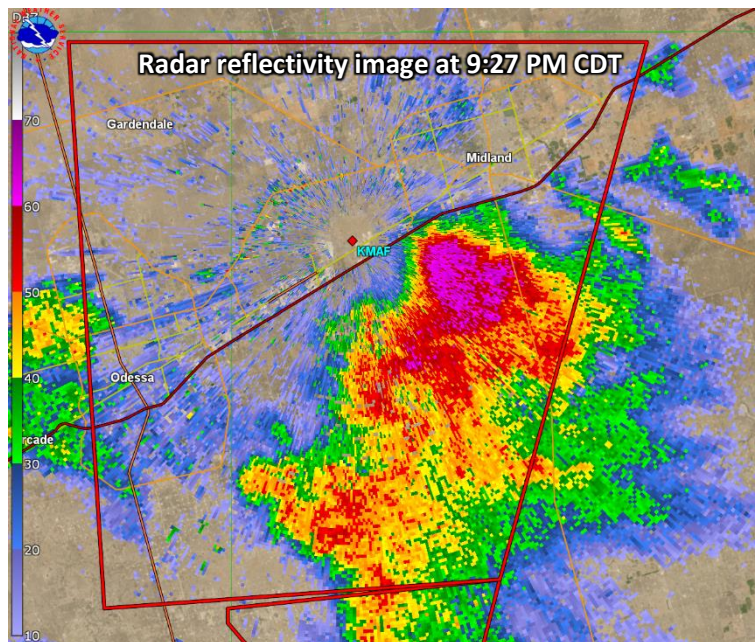
## Widespread Severe Thunderstorms Impact West Texas and Southeast New Mexico June 3, 2018

After an extremely hot week with high temperatures reaching 105 degrees or greater each day across a large part of the area, a large upper ridge broke down and widespread severe thunderstorms enveloped the region the afternoon and evening of June 3<sup>rd</sup>. A warm, moist, and unstable airmass was present along and west of the Pecos River by 3 PM CDT Sunday afternoon. Around this time, thunderstorms developed in several locations including near Van Horn, TX and near Junction, TX along a cold front that had stalled near I-10. At the same time, a line of strong to severe storms was forming over northern Mexico, west of El Paso and moving east.

An isolated cluster of severe storms produced golf ball size hail in the city of Van Horn just after 4:30 PM CDT. These storms eventually turned south and produced large hail and very heavy rain in rural portions of western Jeff Davis and northern Presidio Counties.



The cluster of storms near Junction quickly become severe and progressed west along I-10 eventually reaching far eastern portions of Pecos County. Hail near 2" in diameter fell in Iraan, TX around 7:30 PM CDT as the storms moved across. These storms eventually moved north into the Permian Basin with severe hail and damaging winds being reported in the southern part of Midland, TX around 9:30 PM CDT. The



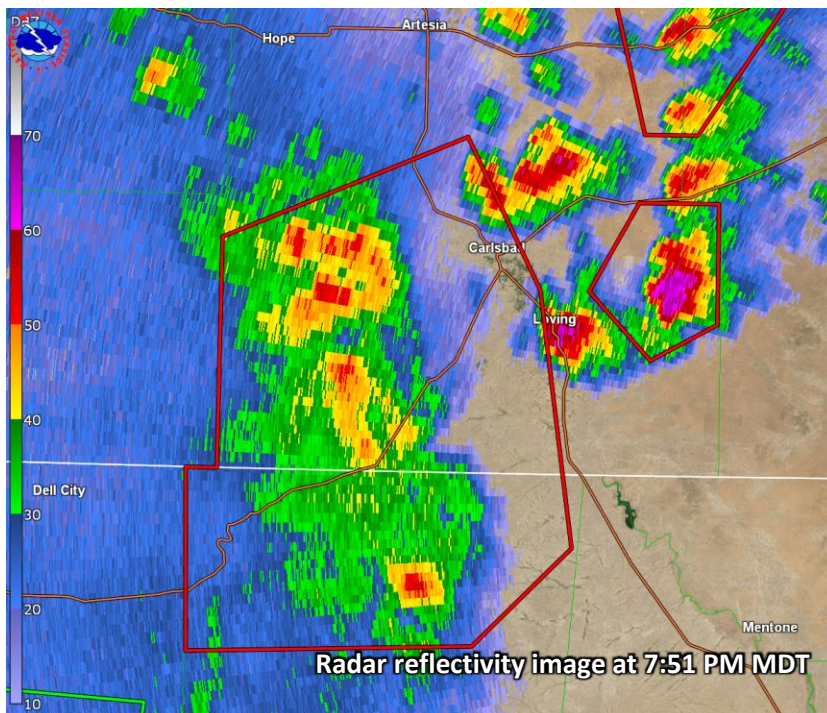
National Weather Service in Midland conducted a survey of this area and found numerous dented vehicles, broken windows and damaged siding on houses along S CR 1226 in southern Midland County. This

Storm damage from south Midland near S CR 1226



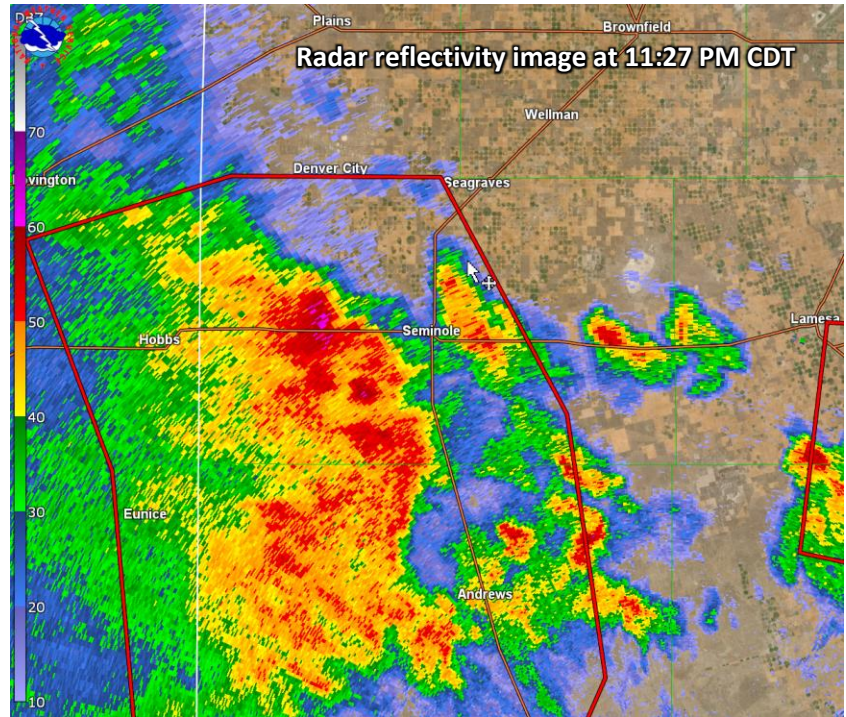
was likely caused by tennis ball size hail driven by 60 to 70 mph winds. This storm later went on to produce large hail in Greenwood and Grady, TX between 9:45 and 10:15 PM CDT.

The line of severe storms over Mexico then moved into far West Texas, reaching Culberson County and the Guadalupe Mountains around 7 PM MDT. These storms produced a large swath of damaging winds across the Guadalupe Mountains and southeast New Mexico through the evening. Winds gusted to 65 mph at the Guadalupe Pass ASOS (Automated Surface Observing System) and 77 mph at The Bowl (~7,700 ft elevation in the Guadalupe Mountains). The line of storms then moved through Eddy County, NM producing widespread winds near 60 mph



through Carlsbad, NM. Additional severe storms developed ahead of this line and produced tennis ball size hail east of Loving, NM just before 8 PM MDT. The line of severe storms continued east stretching from Roswell, NM to Jal, NM to Pecos, TX at 9 PM MDT. Damaging winds continued as wind gusts over 60 mph were reported throughout Lea County, NM. Severe winds then reached Wink, TX with a wind gust of 69 mph around 10:40 PM CDT while Pecos, TX measured a

62 mph wind gust at 10:45 PM CDT. The northern portion of the line of thunderstorms went on to produce damaging winds across Gaines County, TX just after 11 PM CDT. Wind gusts of 61 and 67 mph recorded in Seminole, TX and Seagraves, TX, respectively. There were numerous reports of downed trees, power poles, and traffic signs across the city of Seminole. A 72 mph wind gust was also measured in Welch, TX near the Gaines/Dawson County



line at 11:43 PM CDT. To the south, severe storms moved into Ft Stockton, TX around 11:45 PM CDT producing winds between 60 and 70 mph across the city. Strong storms continued to move east across the Permian Basin before finally exiting our area around 4 AM CDT on June 4<sup>th</sup>.

Many locations saw at least half an inch of much needed rainfall from these storms with Hobbs, NM and Seminole, TX each receiving well over an inch of rain.

A special thanks goes out to the Midland County EM Justin Bunch for aiding in the damage survey in southern Midland County!