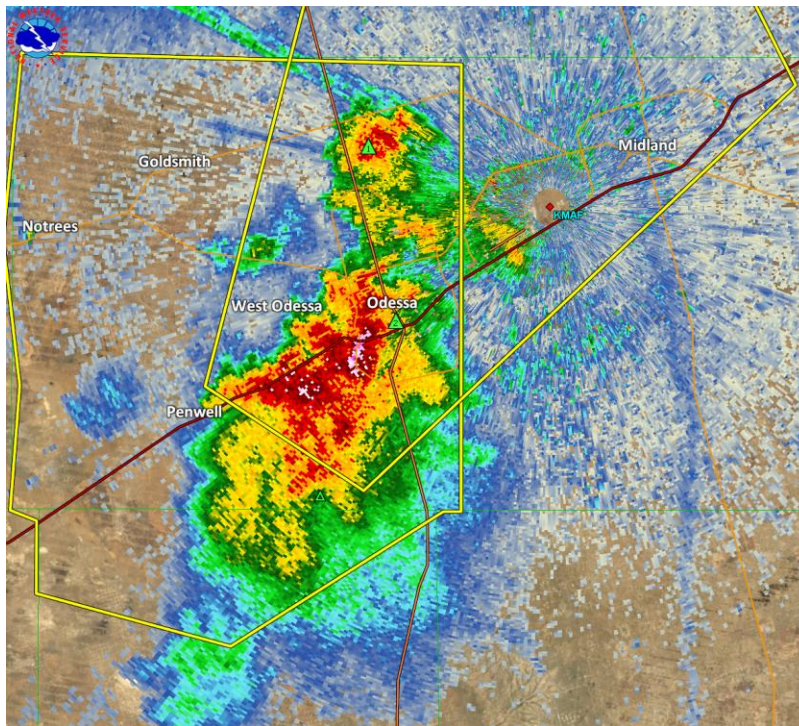


## June 12, 2017 Odessa and Midland, Texas Wind and Hail Event:

During the early evening of June 12, 2017 high winds and hail from severe thunderstorms affected Odessa and Midland, Texas. National Weather Service Meteorologists conducted a storm survey on June 13, 2017.

Odessa-Schlemeyer Field METAR reported wind gusts to 68 mph at 6:08 PM CDT, 61 mph at 6:15 pm CDT, and 63 mph at 6:19 pm CDT. Midland International Air & Space Port METAR reported a wind gust to 67 mph at 6:39 pm CDT. The thunderstorms began to weaken as they moved into the City of Midland. Radar imagery from WFO Midland shows the progression of the severe thunderstorms as they moved northeast over the area (Figures 1-4).

The storm survey noted isolated damage in the Cities of Odessa and Midland. There was wind damage to a metal roof in Odessa (Figure 5), to the Walmart in Odessa (Figure 6), and hail damage to a vehicle at Sky Mazda in Odessa (Figure 7). In Midland trees were uprooted damaging power lines and vehicles (Figures 8 and 9) and the foul pole was bent at Midland Rockhound Stadium by strong winds (Figure 10).



**Figure 1 – Radar imagery at 6:09 pm CDT.**

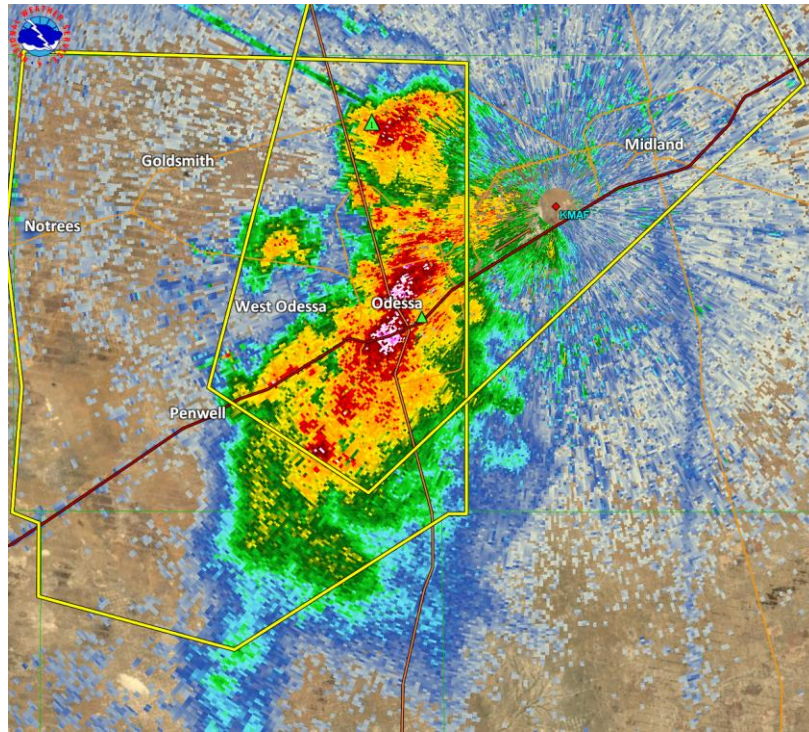


Figure 2 – Radar imagery at 6:14 pm CDT.

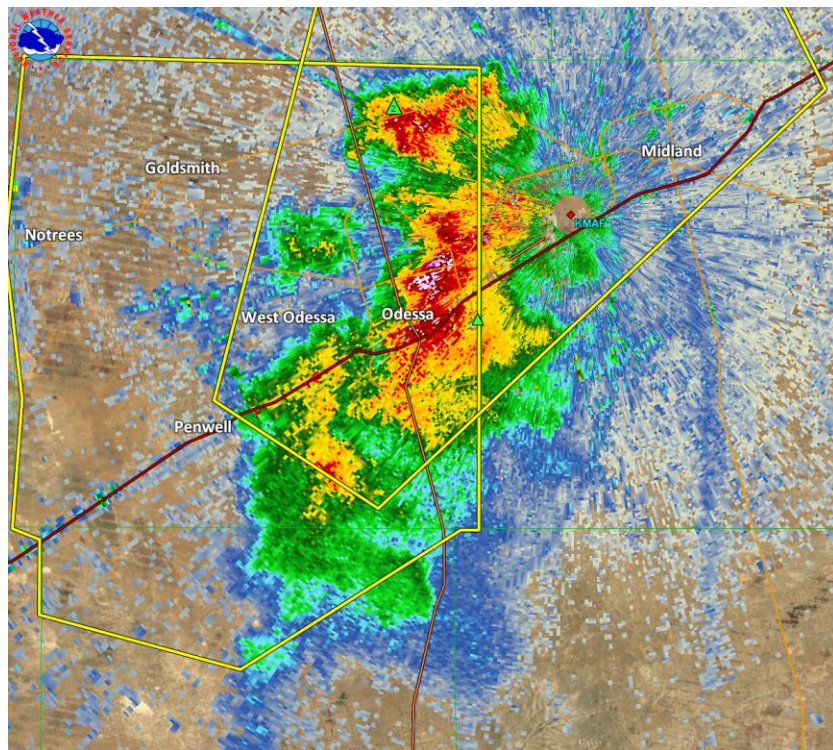


Figure 3 – Radar imagery at 6:19 pm CDT.



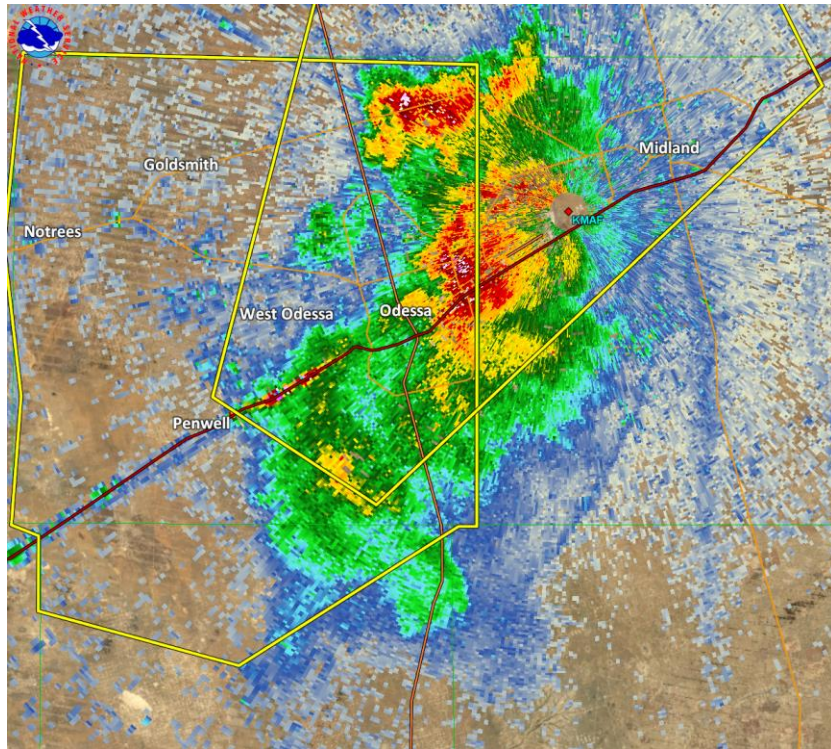


Figure 4 – Radar imagery at 6:24 pm CDT.



Figure 5 – Metal roof damage in West Odessa, Texas (Courtesy of Judy Woolf).



**Figure 6 – Wind damage to front doors at Walmart in Odessa, Texas (Courtesy of Daniel Carnes).**



**Figure 7 – Hail damage to a vehicle at Sky Mazda in Odessa, Texas (Courtesy of Noe Corrales).**





**Figure 8 – Tree uprooted onto power lines at the corner of Midkiff and Michigan in Midland, Texas (courtesy of Rachel Kinman).**



**Figure 9 – Tree uprooted onto vehicles in Midland, Texas (courtesy of Christine Jimenez).**

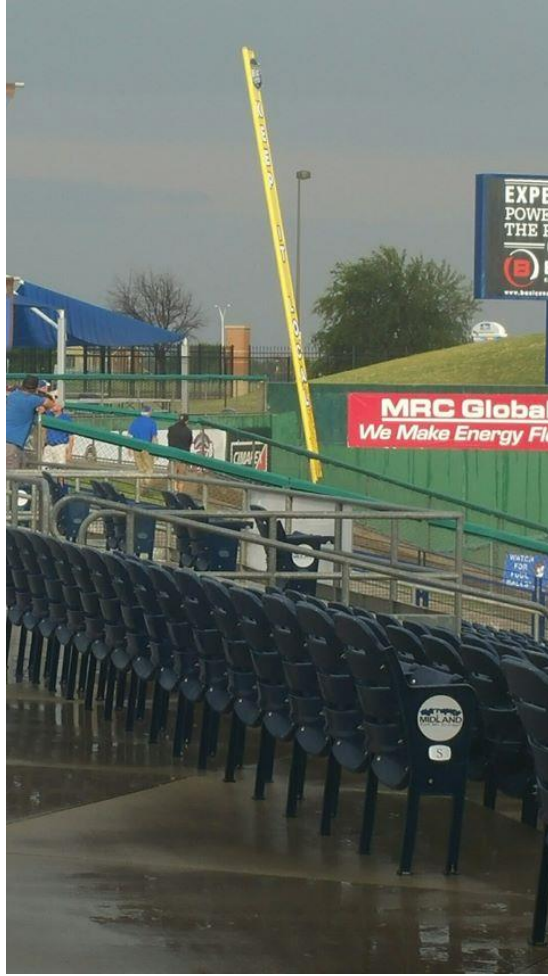


Figure 10 – Midland Rockhounds Stadium foul pole damage.