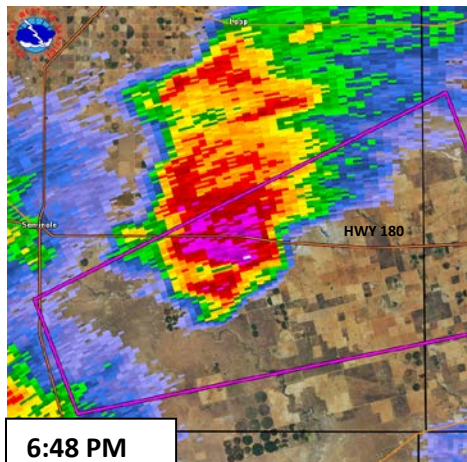


## Gaines County Damage Survey Results

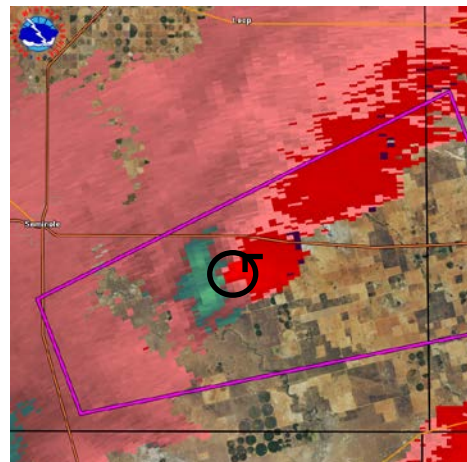
On December 8, 2015, the National Weather in Midland conducted a second damage assessment of the thunderstorms that impacted Gaines County on the evening of November 16. This information was based on additional information that was received regarding damage that occurred in remote locations southeast and east of the city of Seminole.

On November 16, an upper level storm system was located over the Four Corners region of the southwest United States. An associated Pacific cold front was moving into New Mexico and Far West Texas. As this frontal boundary moved into the area and interacted with a surface trough/weak dryline, thunderstorms developed over southeast New Mexico and portions of southwest Texas during the early evening hours on Monday, November 16. With abundant moisture in place over the area along with conditions conducive for severe weather, supercell thunderstorms developed over Gaines County, moving rapidly northeast across the county.

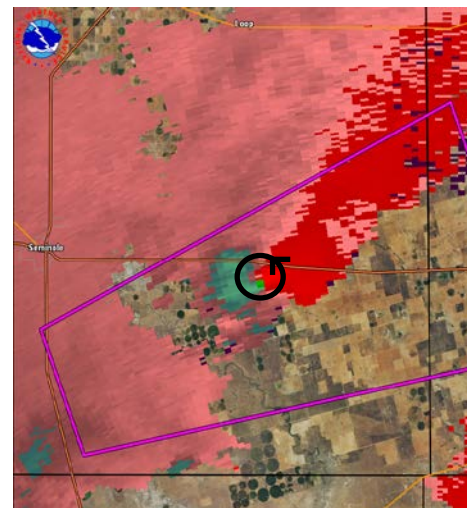
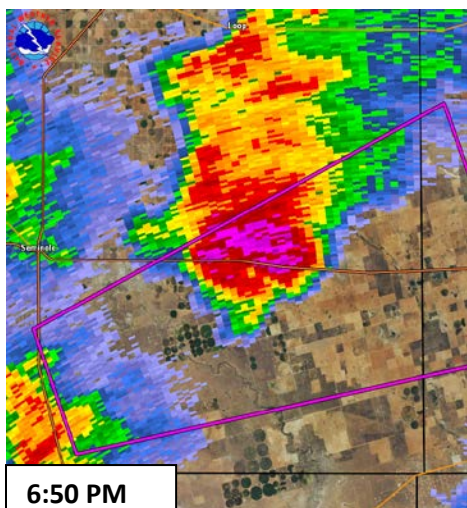
At 6:39 pm CST, the National Weather Service in Midland issued a tornado warning for southeastern Gaines County and West Central Dawson County. Based on a combination of radar data and damage found by the survey team, a tornado began at approximately 6:46 pm CST, providing approximately 7 minutes lead time for the event. The following series of radar images show the supercell thunderstorm that occurred over Gaines County.

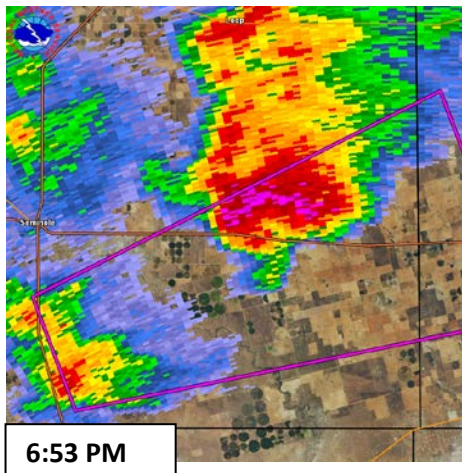


The tornado was likely at EF1 intensity at this time, as it had caused power pole and irrigation equipment damage.



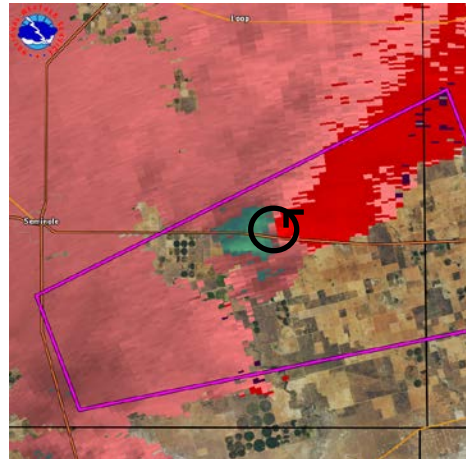
The tornado was likely at its strongest at this time. Based on the damage survey, it appears that the tornado briefly reached EF2 intensity, as it had just caused damage to a well service rig.



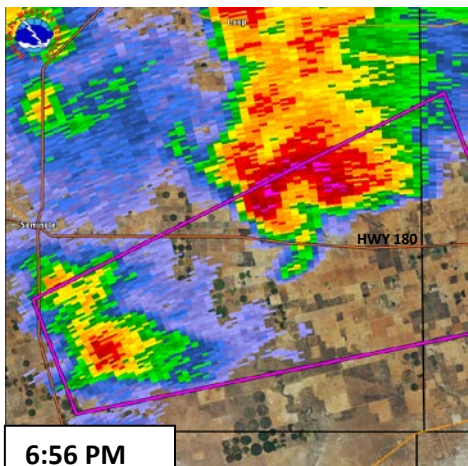


6:53 PM

The last visible damage was to an area of trees just north of the intersection of Highway 180 and County Road 433.



By this time, the supercell thunderstorm had moved north of Highway 180 into open



6:56 PM

Here are some additional images:



The image to the left is a well service rig (pulling unit) that was blown over. Thank you to Ricky Bush, production foreman, who provided the image.



This is an image of a cotton field that was already harvested. The tornado damaged cotton bales and the cotton became “re-attached” to the cotton plants, giving the look of an unharvested field. Cotton also became stuck in the electrical poles as well as on the power lines.

A special thank you to Gaines Co. Emergency manager Robert Barrett for providing additional images of the damage.