

Vealmoor Tornado Damage Survey:

On Wednesday, May 6, 2015 a tornado damage survey was conducted by NWS Midland. A tornado was confirmed near Vealmoor, Texas, a rural area in Howard County north of Big Spring, Texas (Figure 1) during the afternoon of Tuesday, May 5, 2015.

The damage survey team toured the tornado path with Howard County Volunteer Fire Department Fire Chief Tommy Sullivan and Jason Davidson, who witnessed the tornado and provided pictures to the survey team.

The tornado touched down at 3:23 pm CDT and continued generally east for a distance of 8.12 miles before lifting at approximately 3:50 pm CDT (Figure 2). Since the tornado occurred in a rural area, the only damage seen was to a couple of power poles which were snapped near the base (Figure 3). At its widest the tornado was estimated to have a width of approximately 150 yards. Based on the damage seen, the tornado will be rated as an **EF-1** (estimated wind speed of 100 mph).



Figure 1: Vealmoor tornado (Courtesy Jason and Sunni Davidson)

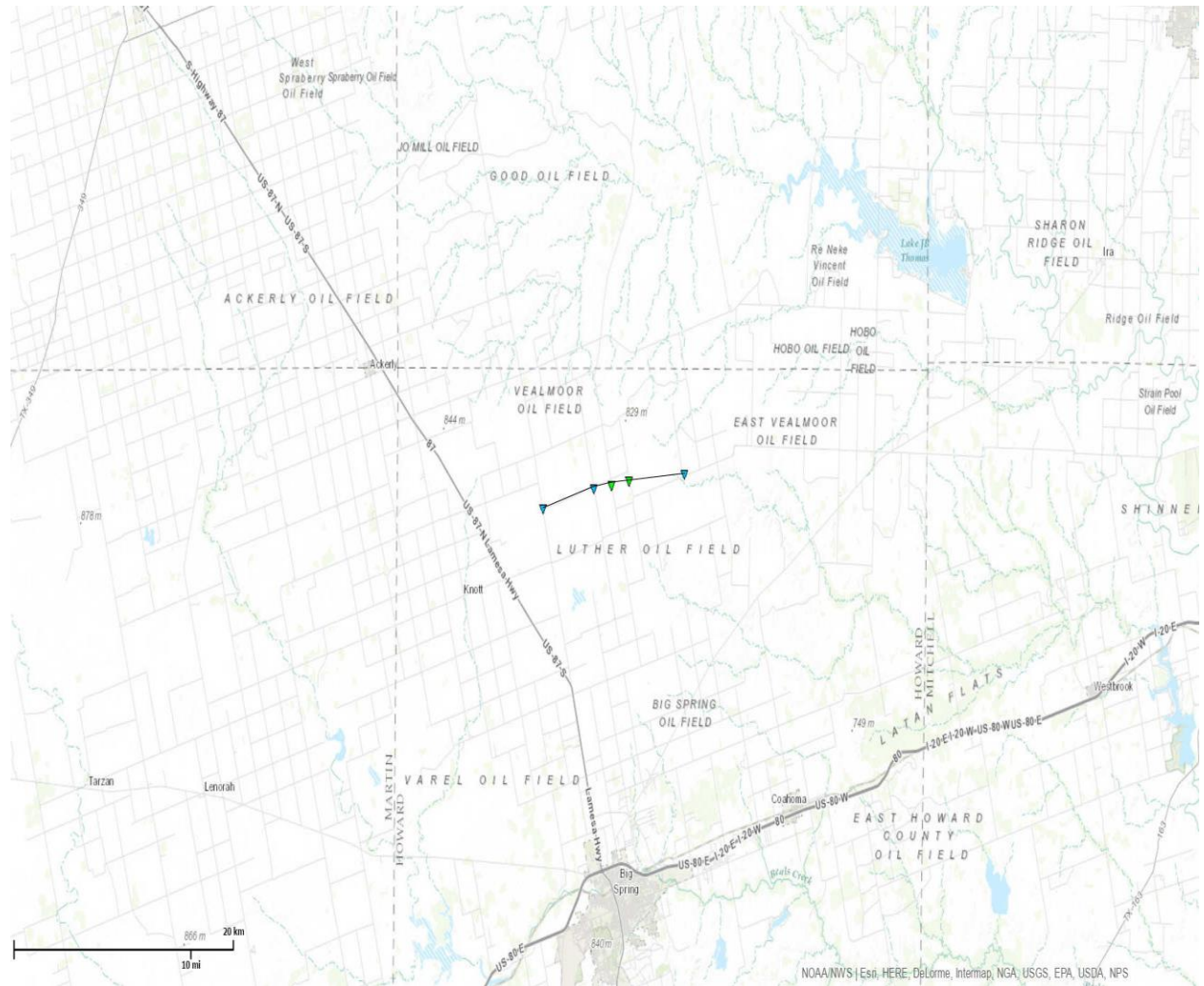


Figure 2: Path of the tornado.



Figure 3: Snapped Power Pole.