

February 2, 2014

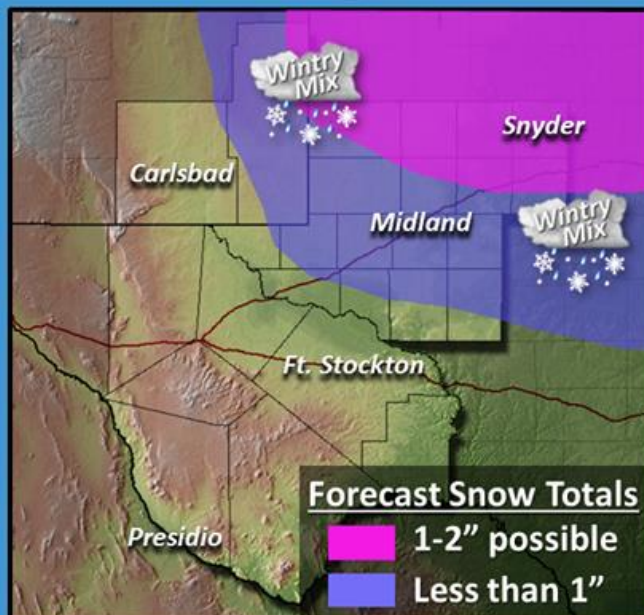
Groundhog Day Ice/Snow Storm

A slow moving, strong cold front moved through southeast New Mexico and southwest Texas Saturday, February 1st. This front dropped temperatures quickly from the 60's and 70's Saturday afternoon to near freezing by midnight Sunday. Meanwhile, an intense upper level storm system was organizing over northern Mexico Saturday evening. This storm combined with the cold air already in place to bring heavy snow, sleet, and freezing rain to the area.

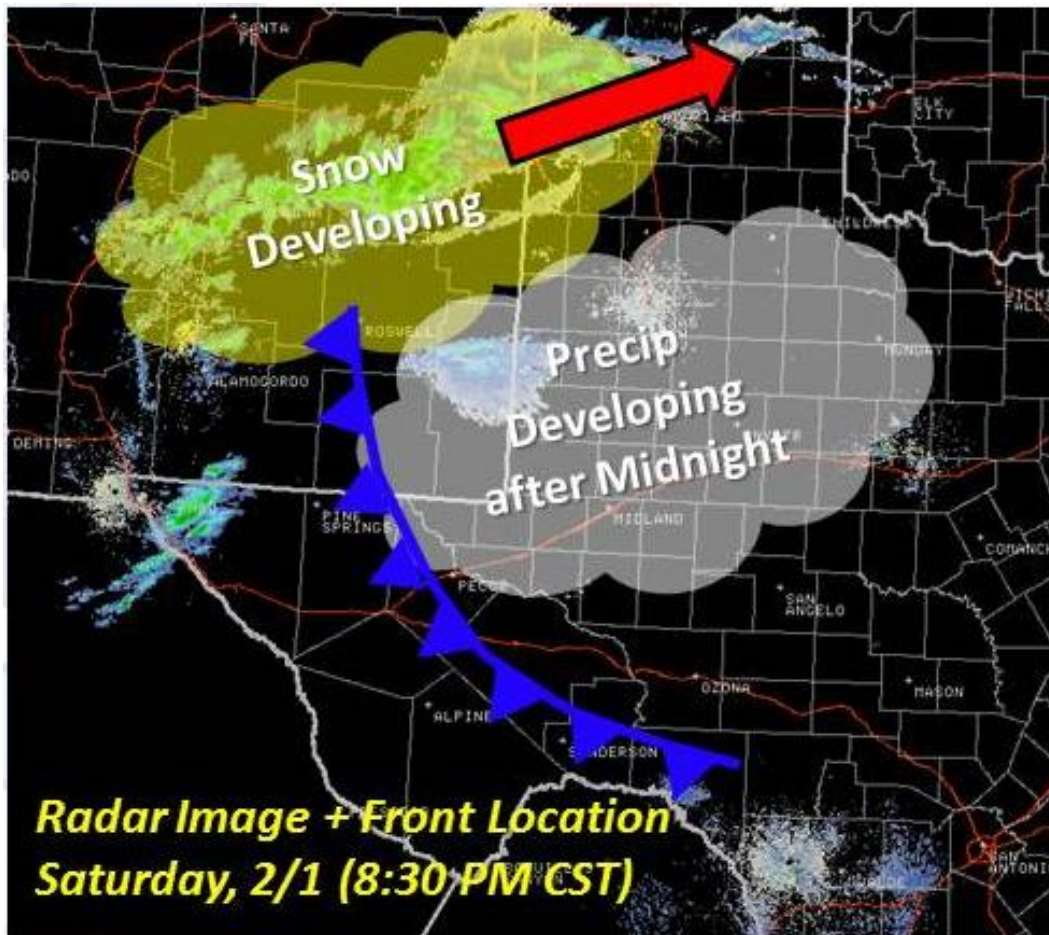
Forecast models initially indicated a weaker system with a wintry mix possible mainly across the northern Permian Basin. A couple of big questions to forecasters were how cold will it be when precipitation starts and how long will it last? Here is a graphic that was issued by NWS Midland early Saturday morning.

Winter Returns Sunday

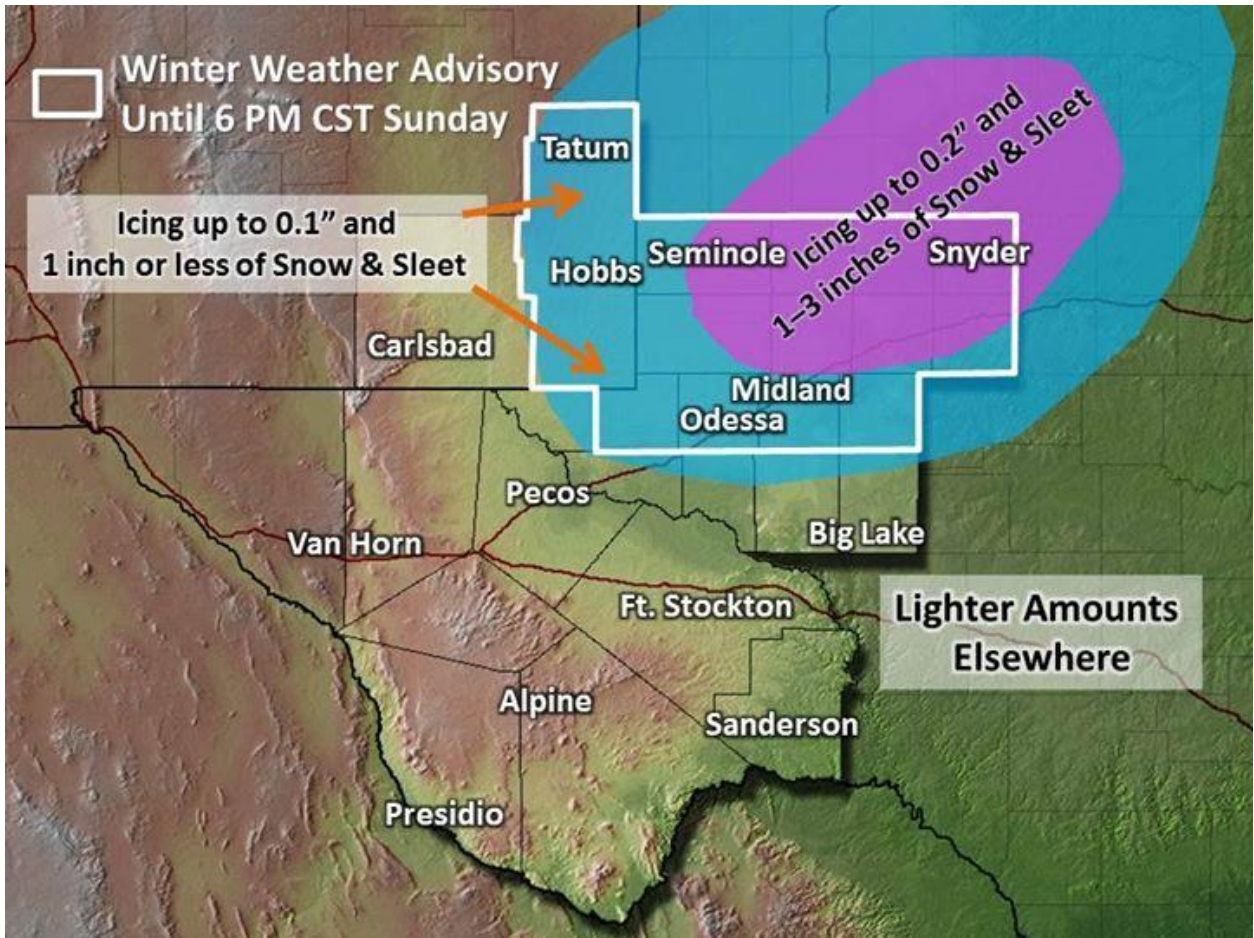
- + Wintry mix of freezing rain, sleet, & snow possible in the shaded areas
- + Much colder tomorrow
- + Highest snow/ice totals over bridges, overpasses, & grassy areas
 - **Bridges & overpasses may be slick!**
- + Timing: Late tonight into Sunday afternoon



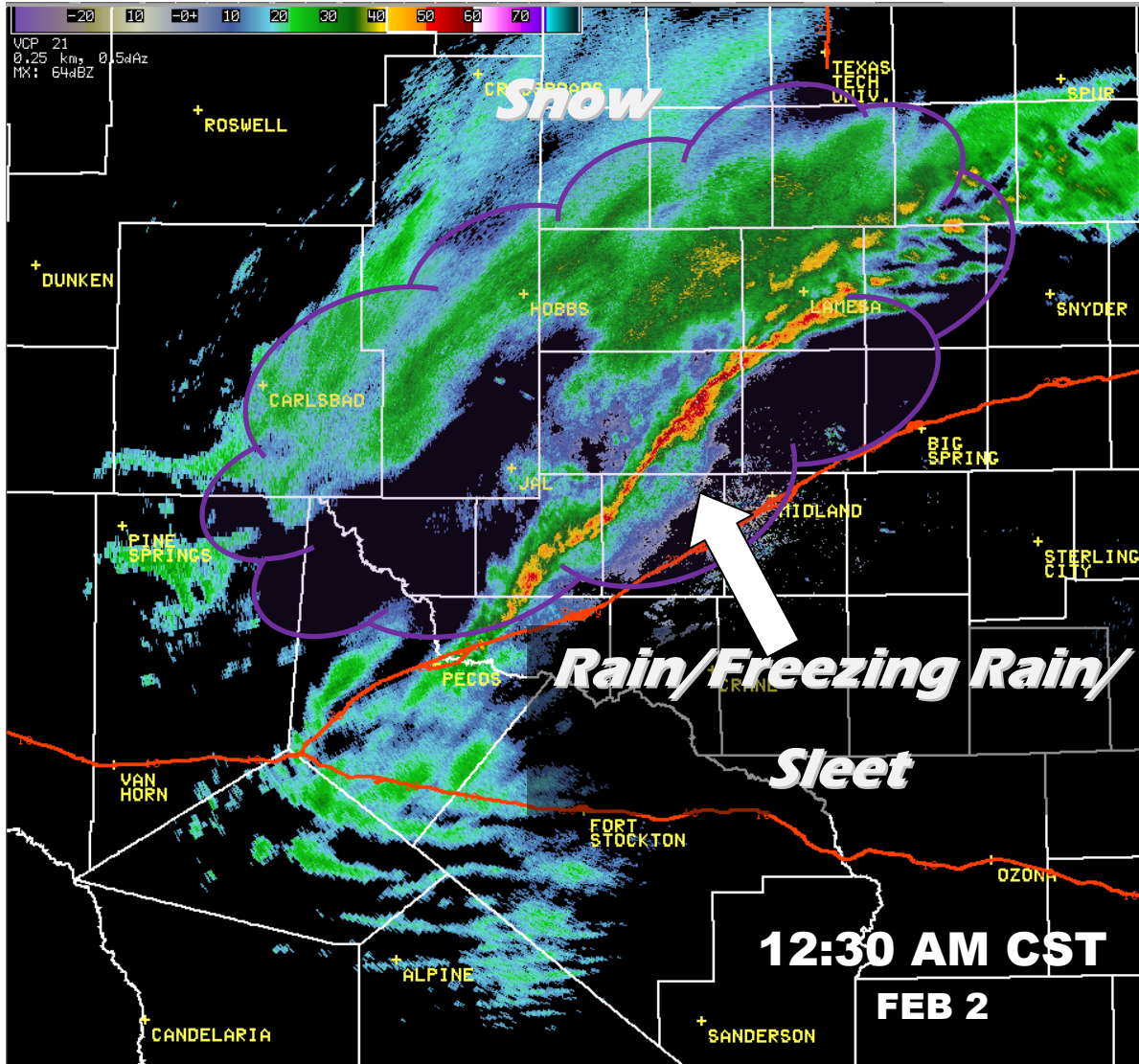
By Saturday evening, the models were still not in agreement on placement of the heaviest precipitation. Also, the cold front had moved through much sooner and temperatures were falling quickly into the 30's and 40's behind the front. By 8:30 PM CST the radar remain pretty quiet, but high resolutions models suggested a rapid increase in precipitation near midnight.



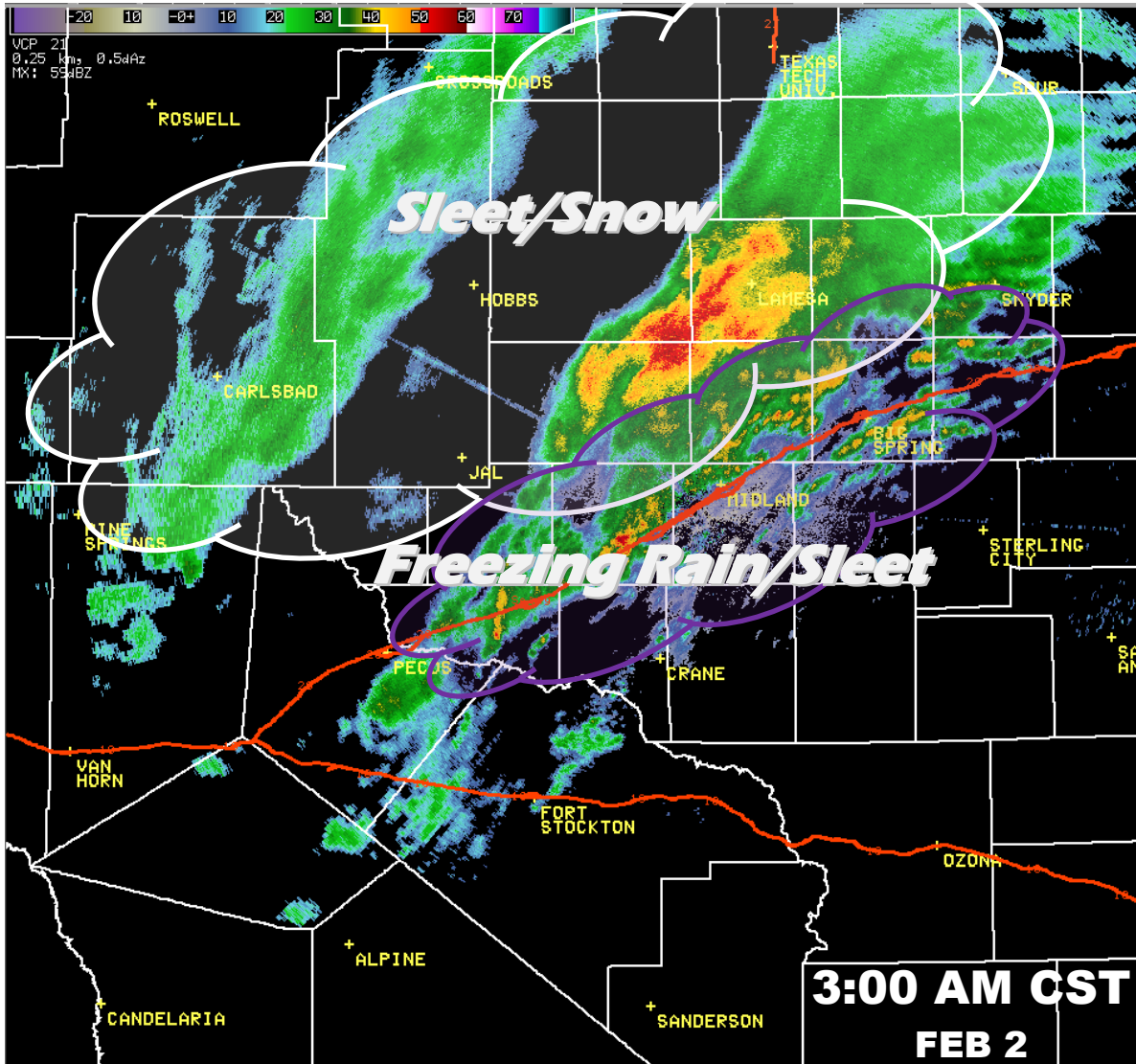
With this in mind, forecasters began to ramp up the forecast for ice and snow for Sunday morning. The Winter Weather Advisory that was in effect for the northeast Permian Basin was expanded west and south with the thinking that precipitation would be more widespread while temperatures were below freezing. This graphic was issued around 9:30 PM CST Saturday evening.



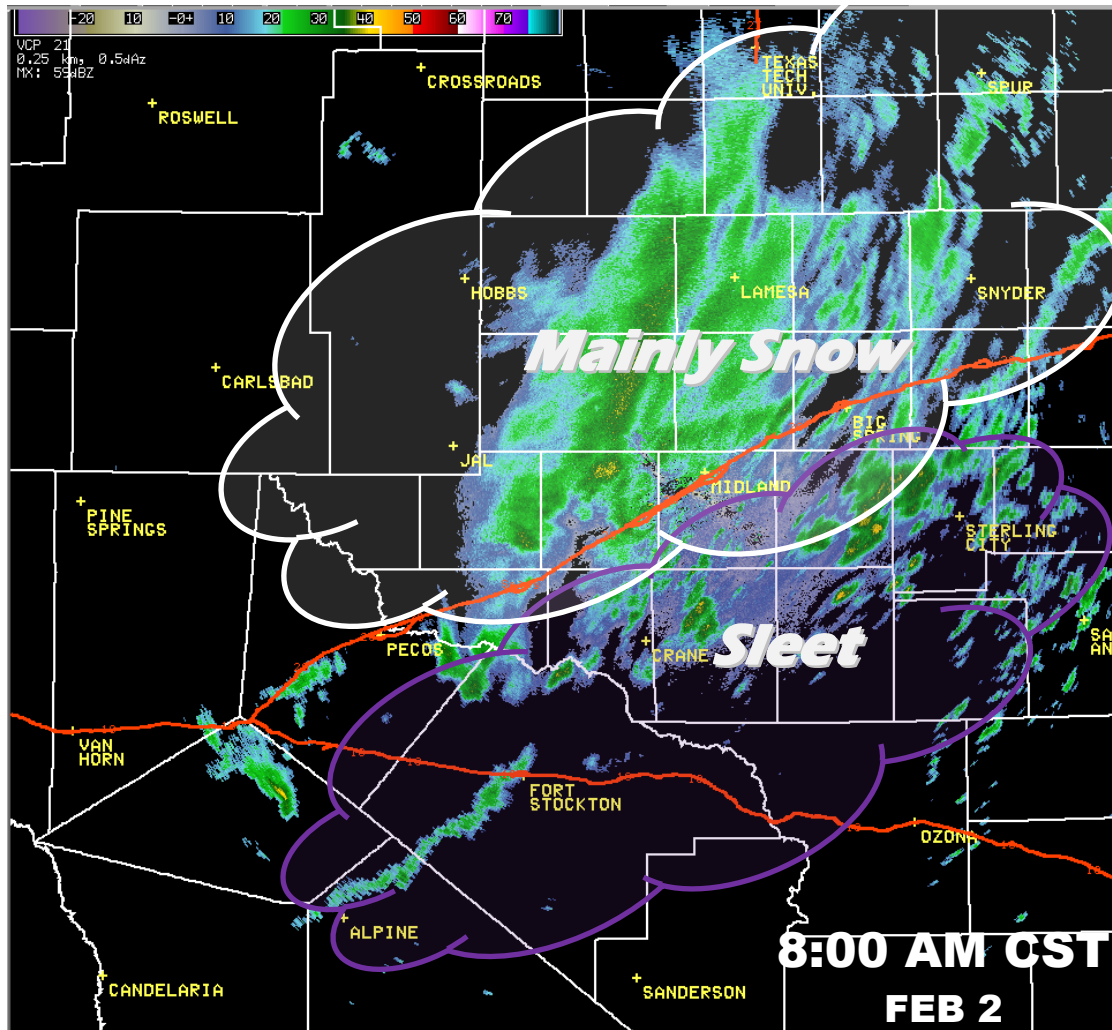
By 12:30 AM CST the radar began to light up with numerous showers and thunderstorms. Rain, freezing rain, and sleet was falling south of a line from Lamesa to Hobbs to Artesia with snow to the north. Numerous lightning strikes were also observed in the heaviest precipitation. Reports began to come in at this time that sleet was beginning to accumulate in Lamesa and Andrews.



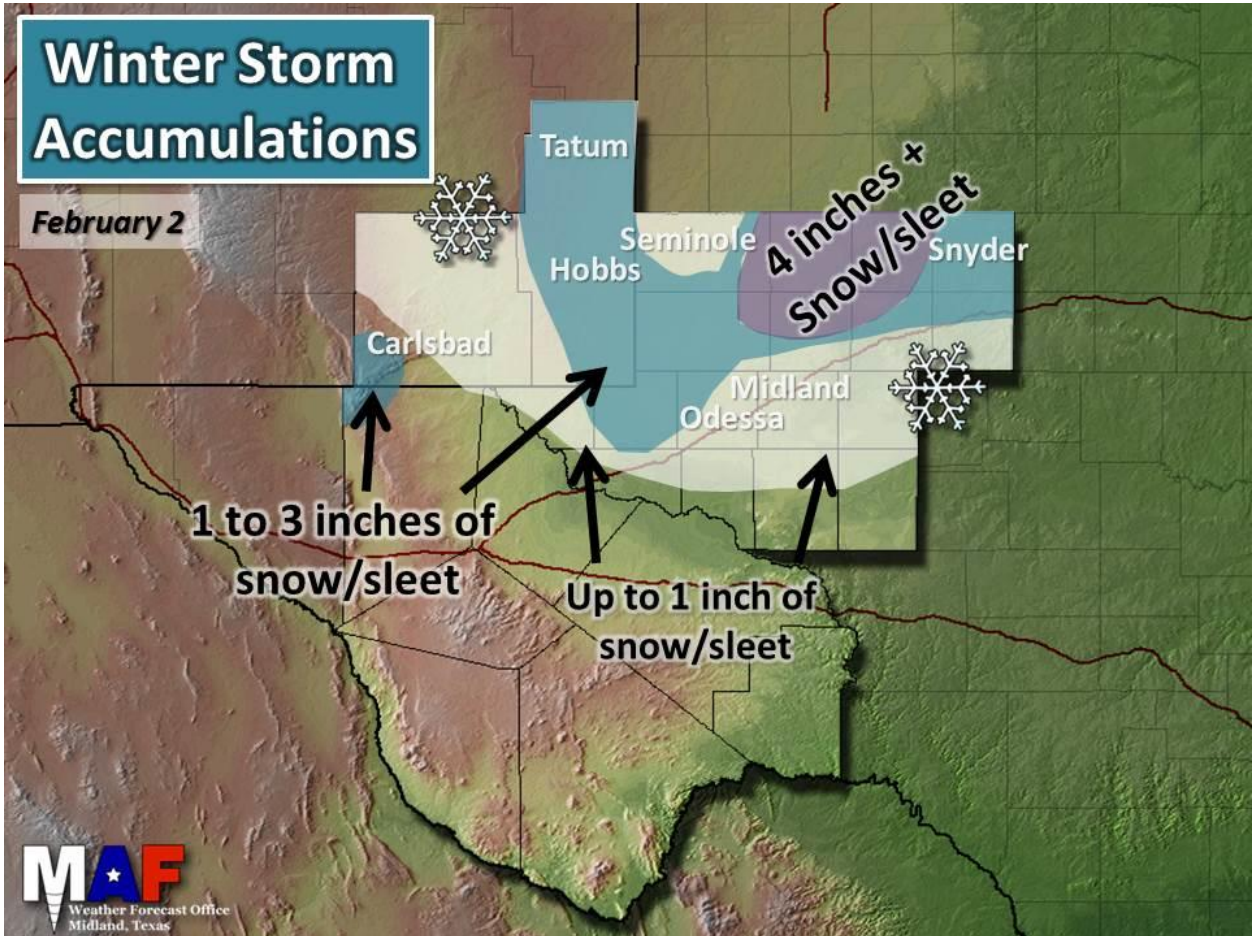
Heavy freezing rain, sleet and snow spread across the Permian Basin and southeast New Mexico by 3 AM CST. Reports were coming in that several inches of sleet and snow had accumulated across the northern Permian Basin by this time.



By 8 AM CST, cold air had deepened enough to allow most of the freezing rain and sleet to change over to snow. Most of the snow then moved off to the east of our area by late morning.



By Sunday morning, some residents across the Permian Basin and southeast New Mexico woke up to several inches of sleet and snow. Here's a map showing a compilation of reports we received.



Here are some of the great pictures that were shared with us from our Facebook and Twitter fans:



Corey Cruce in Hobbs



Janna Van Zandt in Midland



Lynda Schonfelder in Midland



Robbie Walker near Snyder



In Lamesa



2-2-2019
Wendell L. Malone

Wendell Malone near Loving, NM