



Drought Information Statement for Arkansas

Valid June 4, 2026

Issued By: National Weather Service-WFO Little Rock, AR

Contact Information: nws.littlerock@noaa.gov

- This product will be updated June 26th, 2026 or sooner if drought conditions change significantly.
 - Please see all currently available products at <https://drought.gov/drought-information-statements>.
 - Please visit <https://www.weather.gov/LZK/DroughtInformationStatement> for previous statements.
 - Please visit <https://www.drought.gov/drought-status-updates> for regional drought status updates.
-
- Almost all of Arkansas continues to experience drought conditions.
 - Nearly 81% of the state is in severe drought or greater (D2 or greater).
 - A decrease in exceptional drought conditions (D4) was noted from the previous statement.



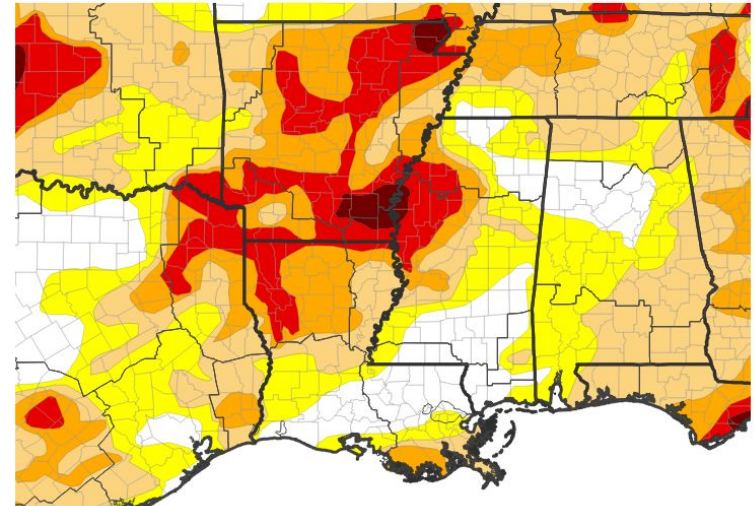


U.S. Drought Monitor

Link to the [latest U.S. Drought Monitor](#) for Arkansas

- Drought intensity and extent:
 - **D4 (Exceptional Drought)**: Portions of northeast and southeast Arkansas.
 - **D3 (Extreme Drought)**: Several portions of Arkansas.
 - **D2 (Severe Drought)**: Much of Arkansas has D2 or greater conditions indicated.
 - **D1 (Moderate Drought)**: Portions of western, eastern and southwest Arkansas.
 - **D0: (Abnormally Dry)**: Very small portion of west central Arkansas.

U.S. Drought Monitor



U.S. Drought Monitor



Source(s): NDMC, NOAA, USDA, NASA; image courtesy of Drought.gov

Data Valid: 06/02/26



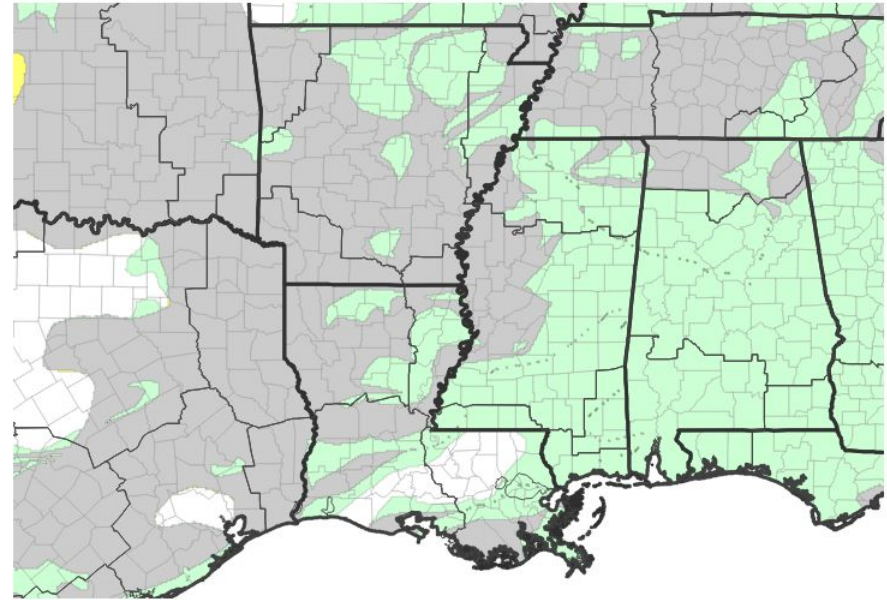


Recent Change in Drought Intensity

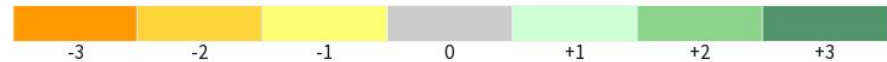
Link to the latest [4-week change map](#) for Arkansas

- One Week Drought Monitor Class Change.
 - Much of northern Arkansas experienced a category improvement in drought conditions.

U.S. Drought Monitor 1-Week Change Map



Drought Change Since Last Week



Source(s): NDMC, NOAA, USDA, NASA; image courtesy of Drought.gov

Data Valid: 06/02/26

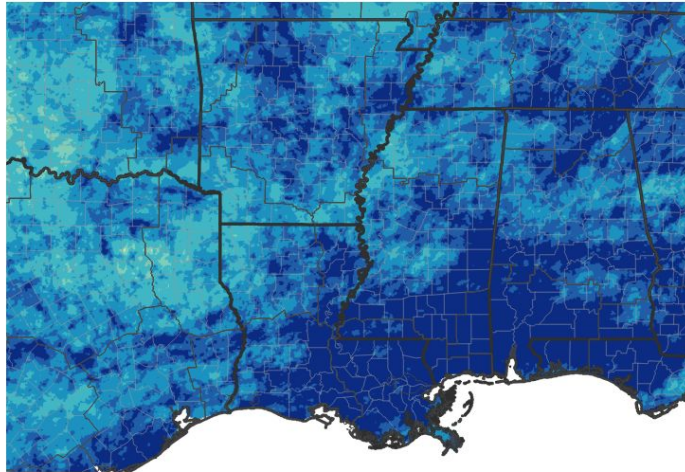




Precipitation

- Portions of western Arkansas experienced below normal precipitation during the last 30 days. Much of the rest of the state received above normal precipitation during the same time.

30-Day Precipitation Accumulations (Inches)

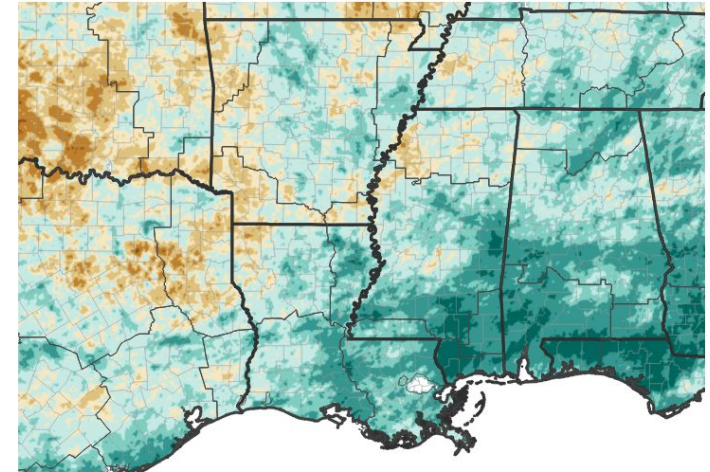


Inches of Precipitation

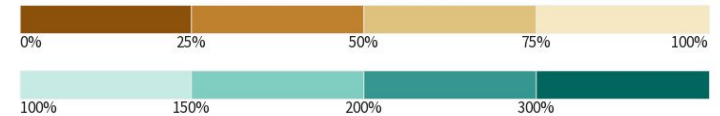


Source(s): National Weather Service Multi-Radar Multi-Sensor System; image courtesy of Drought.gov Last Updated: 06/04/26

30-Day Percent of Normal Precipitation



Precipitation Shown as a Percentage of Normal Conditions



Source(s): National Weather Service Multi-Radar Multi-Sensor System; image courtesy of Drought.gov Last Updated: 06/04/26





Summary of Impacts

Links: See/submit [Condition Monitoring Observer Reports \(CMOR\)](#) and view the [Drought Impacts Reporter](#)

Agricultural and Wildlife Impacts

- Recent dry conditions have led to significant impacts to livestock and agriculture.
 - [Recent Agriculture and Livestock Impacts](#)

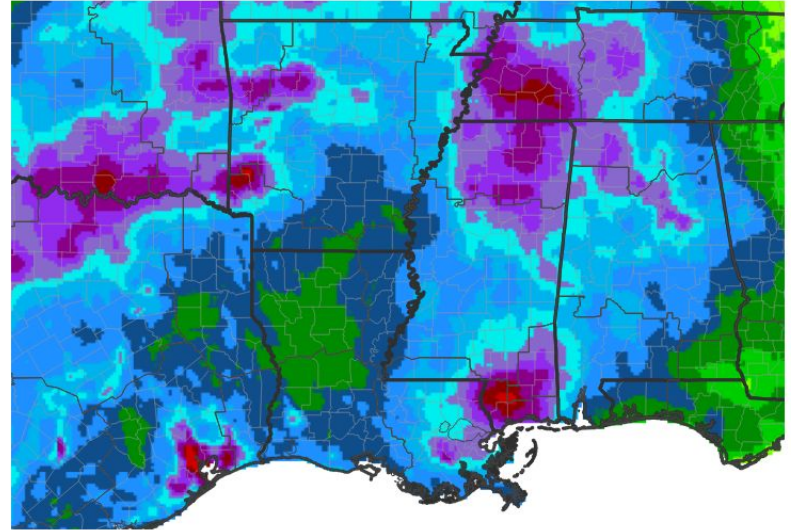




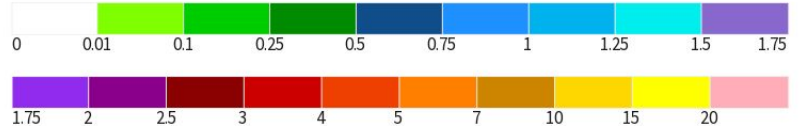
Seven Day Precipitation Forecast

- The 7 day precipitation forecast calls for at least an inch of rain across much of the state.

7-Day Quantitative Precipitation Forecast for June 4, 2026–June 11, 2026



Predicted Inches of Precipitation



Source(s): National Weather Service Weather Prediction Center; image courtesy of Drought.gov

Last Updated: 06/04/26



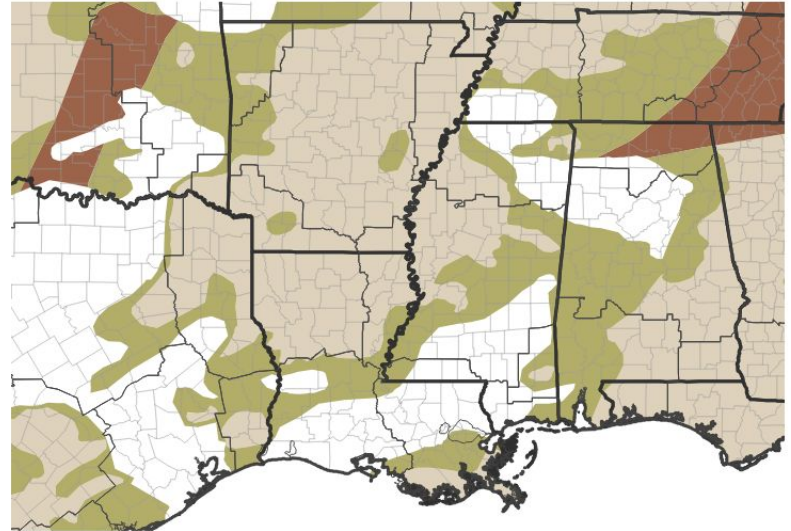


Drought Outlook

The latest monthly and seasonal outlooks can be found on the [CPC homepage](#)

- Drought conditions are expected to improve during the next 3-month period.

Seasonal (3-Month) Drought Outlook for May 31, 2026–August 31, 2026



Drought Is Predicted To...



Source(s): Climate Prediction Center; image courtesy of Drought.gov

Last Updated: 05/31/26

Links to the latest:

[Climate Prediction Center Monthly Drought Outlook](#)

[Climate Prediction Center Seasonal Drought Outlook](#)

