



# Drought Information Statement for Arkansas

Valid May 21, 2026

Issued By: National Weather Service-WFO Little Rock, AR

Contact Information: [nws.littlerock@noaa.gov](mailto:nws.littlerock@noaa.gov)

- This product will be updated June 19th, 2026 or sooner if drought conditions change significantly.
  - Please see all currently available products at <https://drought.gov/drought-information-statements>.
  - Please visit <https://www.weather.gov/LZK/DroughtInformationStatement> for previous statements.
  - Please visit <https://www.drought.gov/drought-status-updates> for regional drought status updates.
- 
- All of Arkansas continues to experience drought conditions.
  - Nearly 86% of the state is in severe drought or greater (D2 or greater).
  - Approximately 18% of the state is in exceptional drought (D4) conditions.



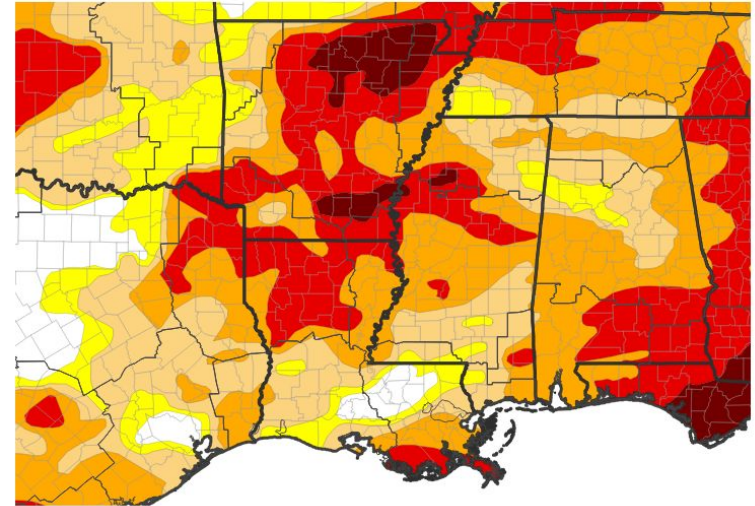


# U.S. Drought Monitor

Link to the [latest U.S. Drought Monitor](#) for Arkansas

- Drought intensity and extent:
  - **D4 (Exceptional Drought)**: Portions of central, north central, northeast, southeast and south central Arkansas.
  - **D3 (Extreme Drought)**: Portions of north, northeast, north central, central, southern and southeast Arkansas.
  - **D2 (Severe Drought)**: Portions of western, northwest, eastern and southern Arkansas.
  - **D1 (Moderate Drought)**: Portions of northwest and southwest Arkansas.
  - **D0: (Abnormally Dry)**: Portions of western and northwest Arkansas.

U.S. Drought Monitor



U.S. Drought Monitor



Source(s): NDMC, NOAA, USDA, NASA; image courtesy of Drought.gov

Data Valid: 05/12/26



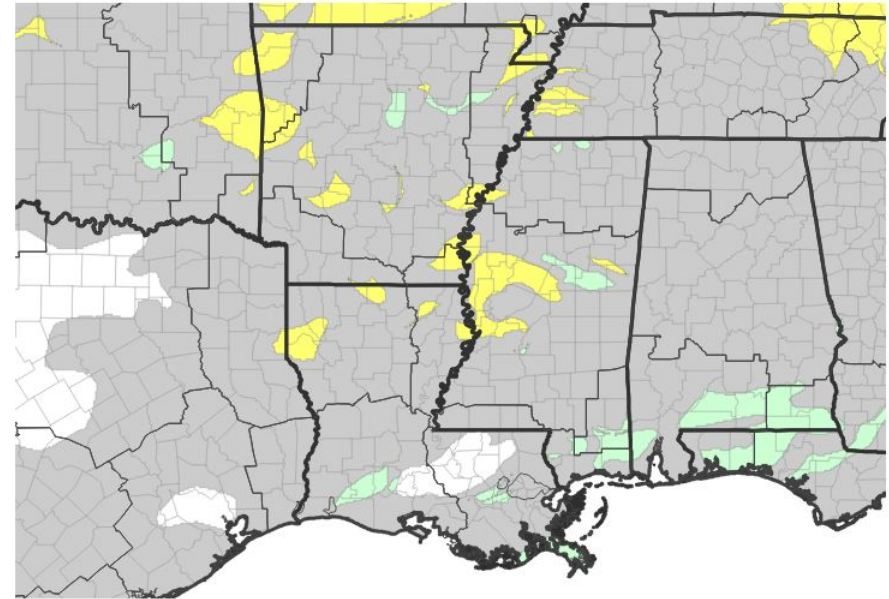


# Recent Change in Drought Intensity

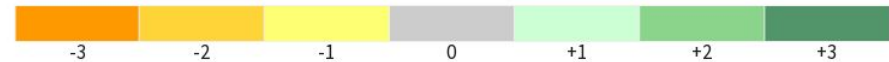
Link to the latest [4-week change map](#) for Arkansas

- One Week Drought Monitor Class Change.
  - Small portions of Arkansas experienced one category degradation/improvement in drought conditions.

U.S. Drought Monitor 1-Week Change Map



Drought Change Since Last Week



Source(s): NDMC, NOAA, USDA, NASA; image courtesy of Drought.gov

Data Valid: 05/19/26

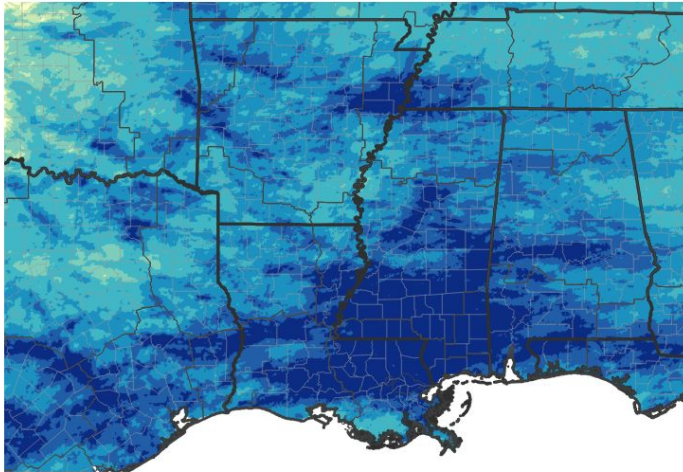




# Precipitation

- Below normal precipitation was noted across most of Arkansas during the last 30 days.

30-Day Precipitation Accumulations (Inches)

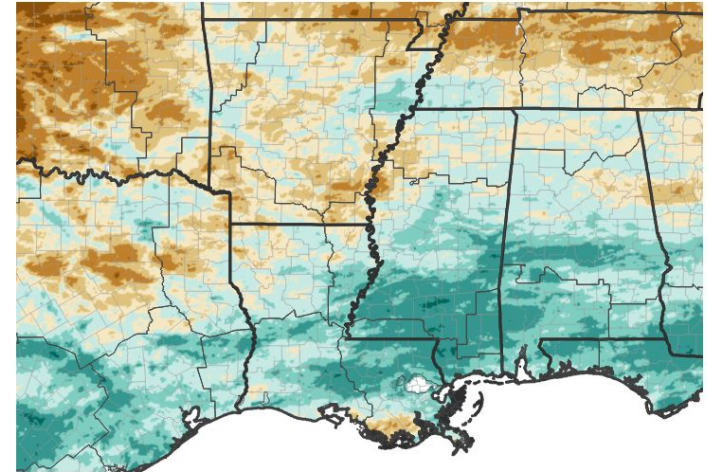


Inches of Precipitation

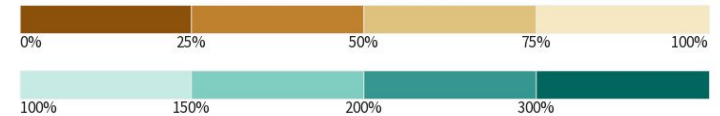


Source(s): National Weather Service Multi-Radar Multi-Sensor System; image courtesy of Drought.gov Last Updated: 05/21/26

30-Day Percent of Normal Precipitation



Precipitation Shown as a Percentage of Normal Conditions



Source(s): National Weather Service Multi-Radar Multi-Sensor System; image courtesy of Drought.gov Last Updated: 05/21/26





# Summary of Impacts

Links: See/submit [Condition Monitoring Observer Reports \(CMOR\)](#) and view the [Drought Impacts Reporter](#)

## Fire Hazard Impacts

- Recent dry conditions have promoted enhanced fire danger conditions across Arkansas.
  - [Arkansas Wildfire Danger and Burn Bans](#)

## Agricultural and Wildlife Impacts

- Recent dry conditions have led to significant impacts to livestock and agriculture.
  - [Recent Agriculture and Livestock Impacts](#)

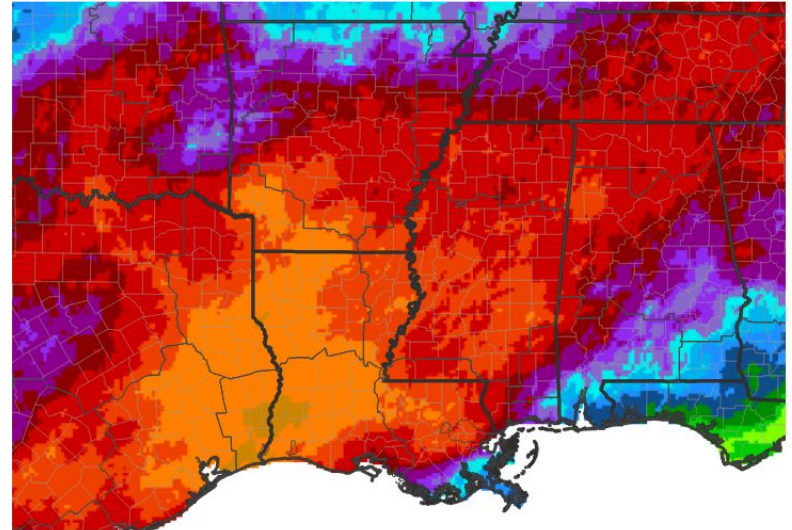




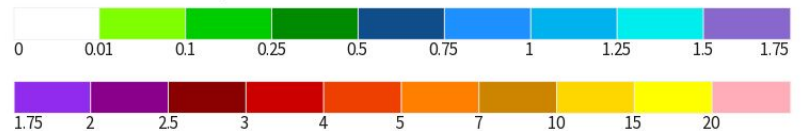
# Seven Day Precipitation Forecast

- The 7 day precipitation forecast calls for several inches of rain across the state.

7-Day Quantitative Precipitation Forecast for May 21, 2026–May 28, 2026



Predicted Inches of Precipitation



Source(s): National Weather Service Weather Prediction Center; image courtesy of Drought.gov

Last Updated: 05/21/26



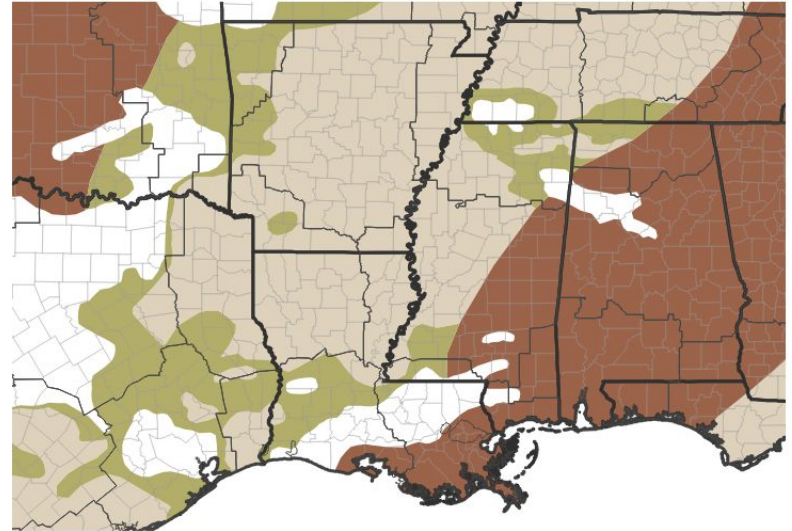


# Drought Outlook

The latest monthly and seasonal outlooks can be found on the [CPC homepage](#)

- Drought conditions are expected to improve across most areas during the next 3-month period.

**Seasonal (3-Month) Drought Outlook for May 21, 2026–August 31, 2026**



**Drought Is Predicted To...**



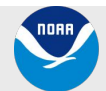
Source(s): Climate Prediction Center; image courtesy of Drought.gov

Last Updated: 05/21/26

Links to the latest:

[Climate Prediction Center Monthly Drought Outlook](#)

[Climate Prediction Center Seasonal Drought Outlook](#)



**National Oceanic and  
Atmospheric Administration**  
U.S. Department of Commerce

**National Weather Service**  
WFO Little Rock