



Drought Information Statement for Arkansas

Valid April 9, 2026

Issued By: National Weather Service-WFO Little Rock, AR

Contact Information: nws.littlerock@noaa.gov

- This product will be updated April 24th, 2026 or sooner if drought conditions change significantly.
 - Please see all currently available products at <https://drought.gov/drought-information-statements>.
 - Please visit <https://www.weather.gov/LZK/DroughtInformationStatement> for previous statements.
 - Please visit <https://www.drought.gov/drought-status-updates> for regional drought status updates.
-
- All of Arkansas continues to experience drought conditions.
 - Over 91% of the state is in severe drought or greater (D2 or greater).
 - Portions of central and northeast Arkansas are in exceptional drought (D4) conditions.



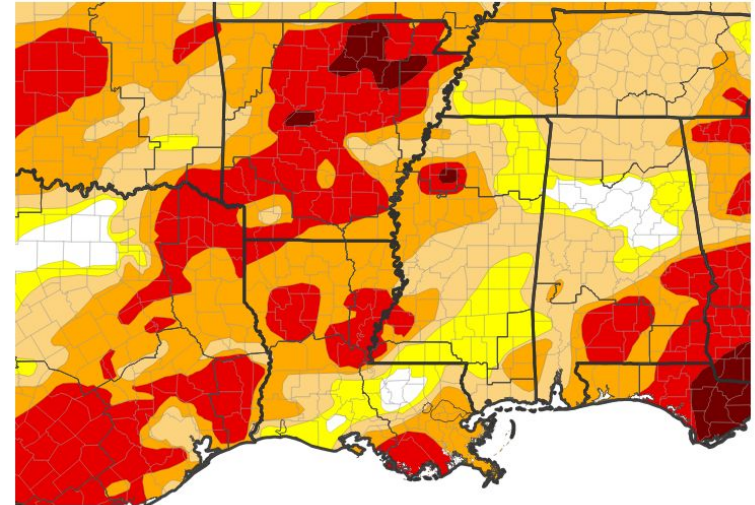


U.S. Drought Monitor

Link to the [latest U.S. Drought Monitor](#) for Arkansas

- Drought intensity and Extent
 - **D4 (Exceptional Drought)**: Portions of central and northeast Arkansas.
 - **D3 (Extreme Drought)**: Portions of north, northeast, north central, central, southwest and southeast Arkansas.
 - **D2 (Severe Drought)**: Portions of western, northwest, eastern and southern Arkansas.
 - **D1 (Moderate Drought)**: Portions of eastern and southwest Arkansas.
 - **D0: (Abnormally Dry)**: None.

U.S. Drought Monitor



U.S. Drought Monitor



Source(s): NDMC, NOAA, USDA, NASA; image courtesy of Drought.gov

Data Valid: 04/07/26



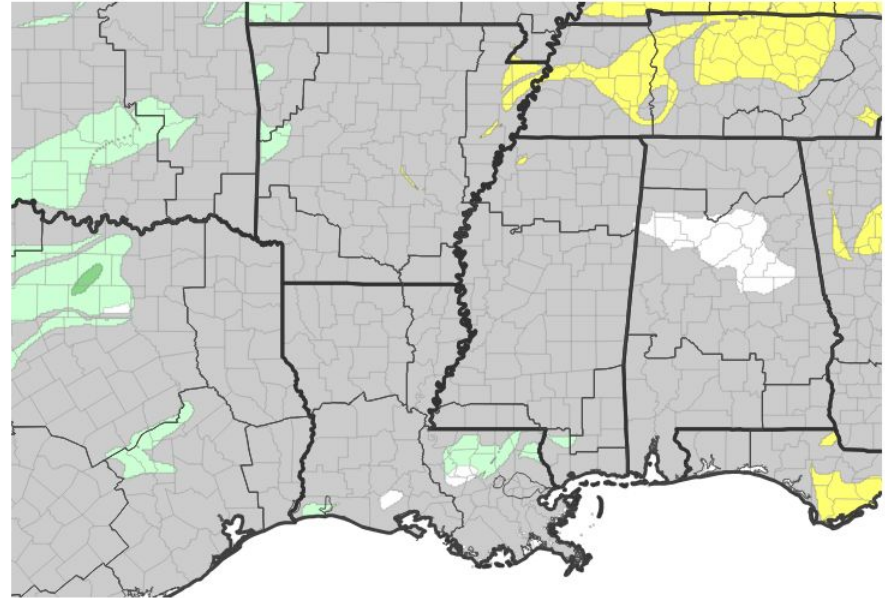


Recent Change in Drought Intensity

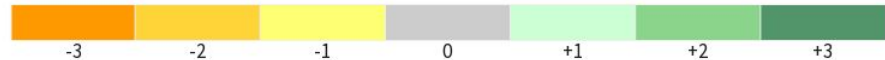
Link to the latest [4-week change map](#) for Arkansas

- One Week Drought Monitor Class Change.
 - Most areas of the state did not experience drought classification changes during the past week.

U.S. Drought Monitor 1-Week Change Map



Drought Change Since Last Week



Source(s): NDMC, NOAA, USDA, NASA; image courtesy of Drought.gov

Data Valid: 04/07/26

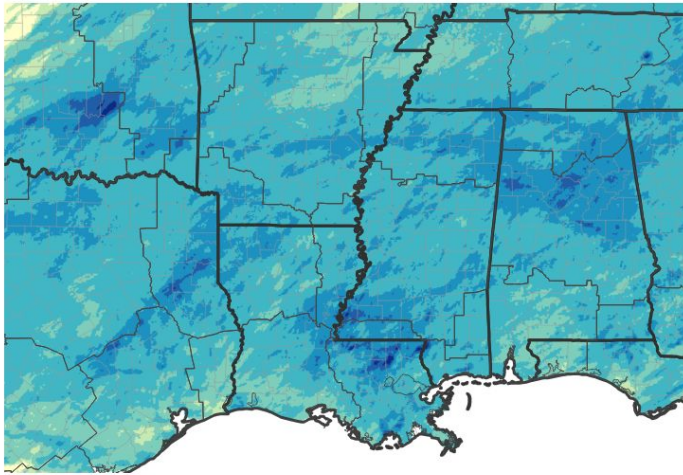




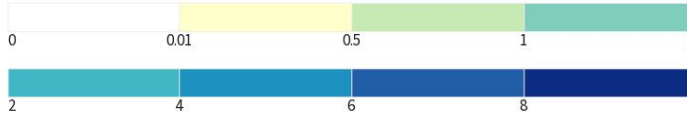
Precipitation

- Below normal precipitation was noted across Arkansas during the last 30 days.

30-Day Precipitation Accumulations (Inches)

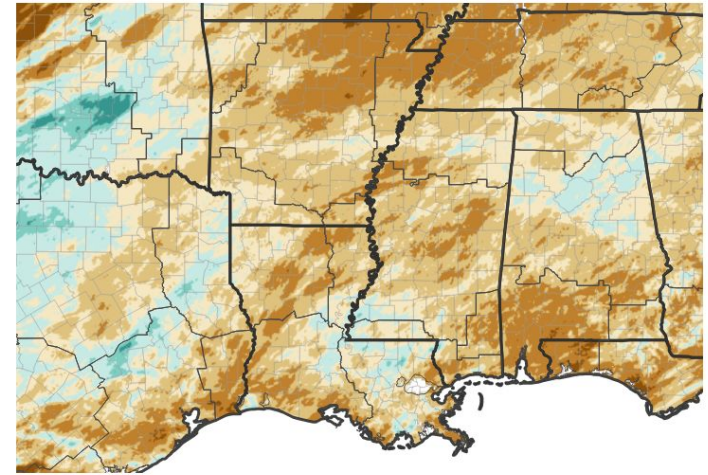


Inches of Precipitation

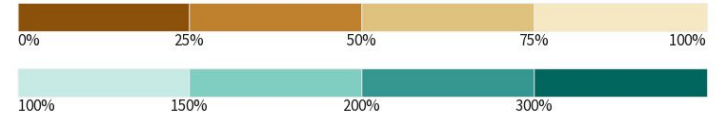


Source(s): National Weather Service Multi-Radar Multi-Sensor System; image courtesy of Drought.gov Last Updated: 04/09/26

30-Day Percent of Normal Precipitation



Precipitation Shown as a Percentage of Normal Conditions



Source(s): National Weather Service Multi-Radar Multi-Sensor System; image courtesy of Drought.gov Last Updated: 04/09/26





Summary of Impacts

Links: See/submit [Condition Monitoring Observer Reports \(CMOR\)](#) and view the [Drought Impacts Reporter](#)

Fire Hazard Impacts

- Recent dry conditions have promoted enhanced fire danger conditions across Arkansas.
 - [Arkansas Wildfire Danger and Burn Bans](#)

Agricultural and Wildlife Impacts

- Recent dry conditions have led to significant impacts to livestock and agriculture.
 - [Recent Agriculture and Livestock Impacts](#)

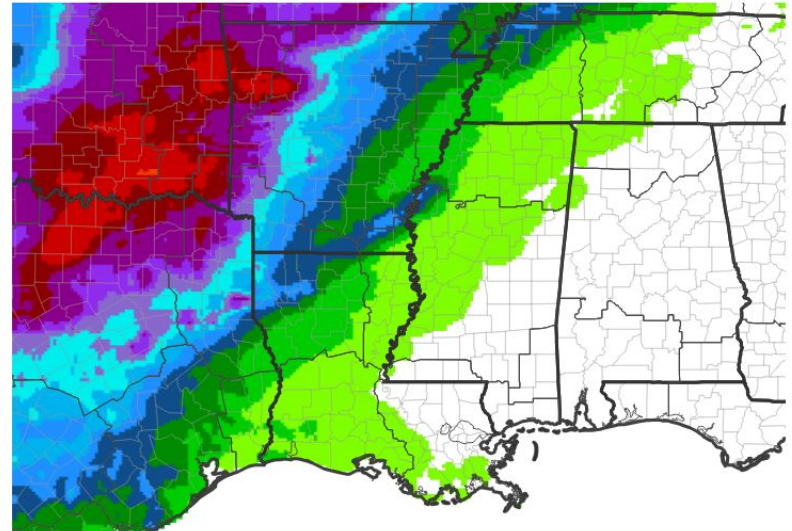




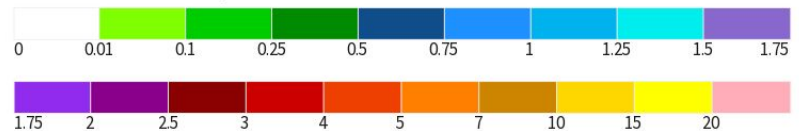
Seven Day Precipitation Forecast

- The 7 day precipitation forecast includes some rain across most of the state.
- Portions of western and northwest Arkansas are expected to receive the most rain.
- Some portions of western and northwest Arkansas could see between 2 to 4 inches of rain.

7-Day Quantitative Precipitation Forecast for April 9, 2026–April 16, 2026



Predicted Inches of Precipitation



Source(s): National Weather Service Weather Prediction Center; image courtesy of Drought.gov

Last Updated: 04/09/26



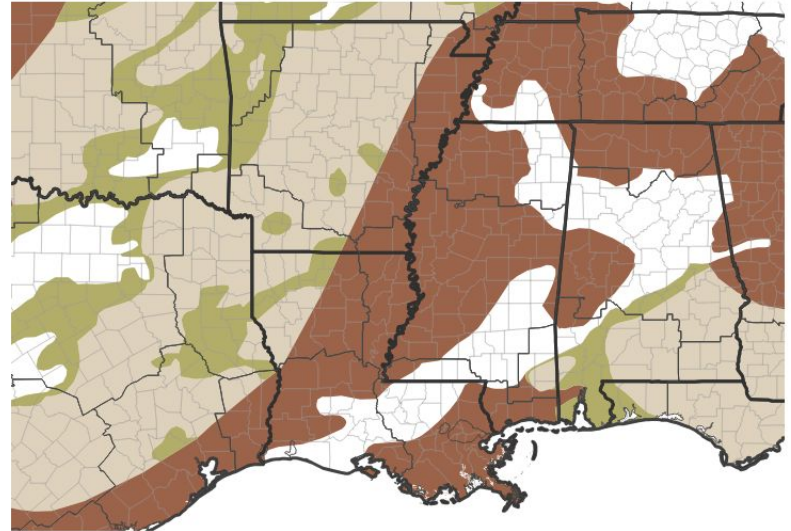


Drought Outlook

The latest monthly and seasonal outlooks can be found on the [CPC homepage](#)

- Drought conditions are expected to persist across parts of eastern Arkansas.
- Some improvement in drought conditions is possible across the rest of the state.

Seasonal (3-Month) Drought Outlook for March 31, 2026–June 30, 2026



Drought Is Predicted To...



Source(s): Climate Prediction Center; image courtesy of Drought.gov

Last Updated: 03/31/26

Links to the latest:

[Climate Prediction Center Monthly Drought Outlook](#)

[Climate Prediction Center Seasonal Drought Outlook](#)

