



Drought Information Statement for Arkansas

Valid April 4, 2026

Issued By: National Weather Service Little Rock, AR

Contact Information: nws.littlerock@noaa.gov

- This product will be updated April 24, 2026 or sooner if drought conditions change significantly.
 - Please see all currently available products at <https://drought.gov/drought-information-statements>.
 - Please visit <https://www.weather.gov/LZK/DroughtInformationStatement> for previous statements.
 - Please visit <https://www.drought.gov/drought-status-updates> for regional drought status updates.
-
- All of Arkansas continues to experience drought conditions.
 - Over 93% of the state is in severe drought or greater (D2 or greater).
 - Portions of central and northeast Arkansas are in exceptional drought (D4) conditions.



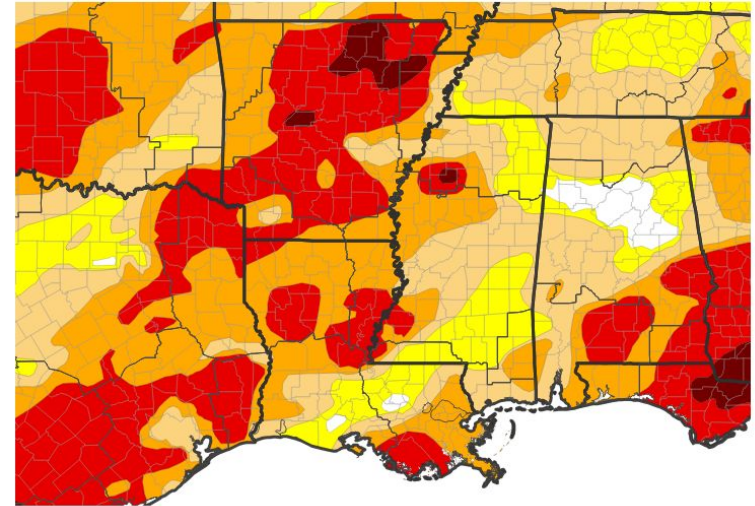


U.S. Drought Monitor

Link to the [latest U.S. Drought Monitor](#) for Arkansas

- Drought intensity and Extent
 - **D4 (Exceptional Drought)**: Portions of central and northeast Arkansas.
 - **D3 (Extreme Drought)**: Much of Arkansas.
 - **D2 (Severe Drought)**: Portions of western, northwest, eastern and southern Arkansas.
 - **D1 (Moderate Drought)**: Portions of eastern and southwest Arkansas.
 - **D0: (Abnormally Dry)**:

U.S. Drought Monitor



U.S. Drought Monitor



Source(s): NDMC, NOAA, USDA, NASA; image courtesy of Drought.gov

Data Valid: 03/31/26



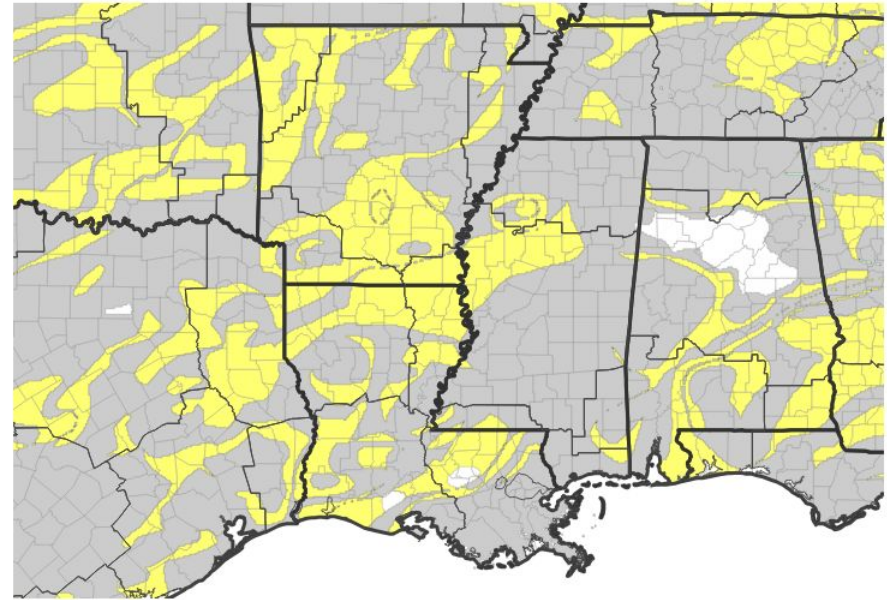


Recent Change in Drought Intensity

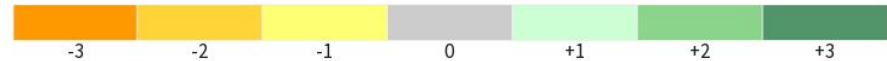
Link to the latest [4-week change map](#) for Arkansas

- One Week Drought Monitor Class Change.
 - The latest one week drought class change shows no change to a negative one class change across Arkansas.

U.S. Drought Monitor 1-Week Change Map



Drought Change Since Last Week



Source(s): NDMC, NOAA, USDA, NASA; image courtesy of Drought.gov

Data Valid: 03/31/26

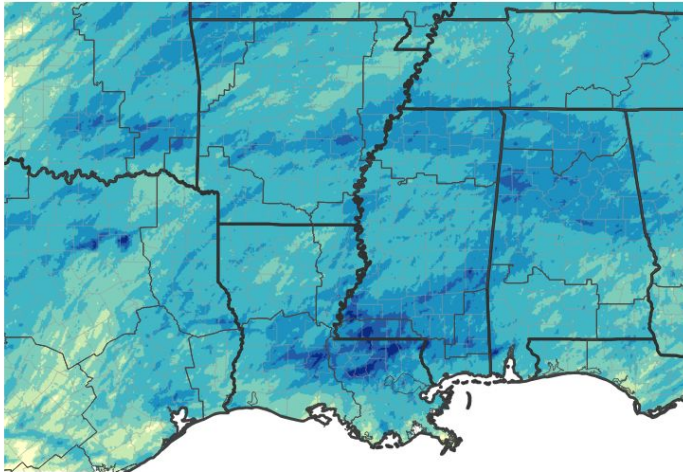




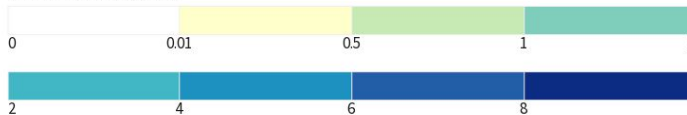
Precipitation

- Most of Arkansas received below normal rainfall over the most recent 30-day period.

30-Day Precipitation Accumulations (Inches)

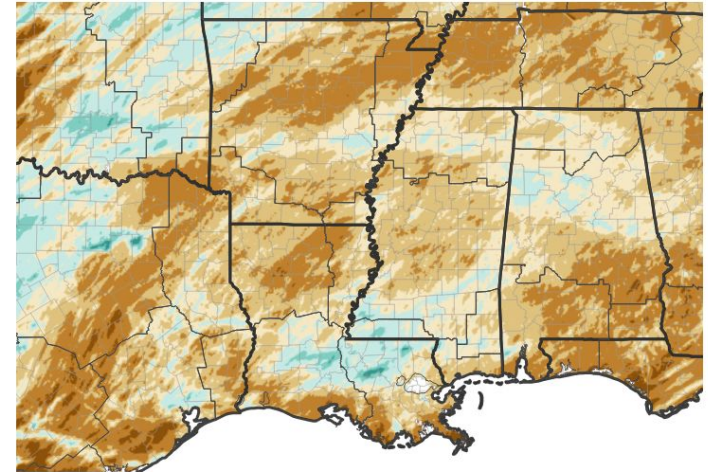


Inches of Precipitation

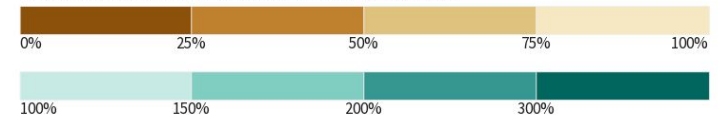


Source(s): National Weather Service Multi-Radar Multi-Sensor System; Last Updated: 04/03/26
image courtesy of Drought.gov

30-Day Percent of Normal Precipitation



Precipitation Shown as a Percentage of Normal Conditions



Source(s): National Weather Service Multi-Radar Multi-Sensor System; Last Updated: 04/03/26
image courtesy of Drought.gov





Summary of Impacts

Links: See/submit [Condition Monitoring Observer Reports \(CMOR\)](#) and view the [Drought Impacts Reporter](#)

Fire Hazard Impacts

- Recent dry conditions have promoted enhanced fire danger conditions across Arkansas.
 - [Arkansas Wildfire Danger and Burn Bans](#)

Agriculture Impacts

- Recent dry conditions have lead to significant impacts to livestock and agriculture.
 - [Recent Agriculture and Livestock impacts](#)

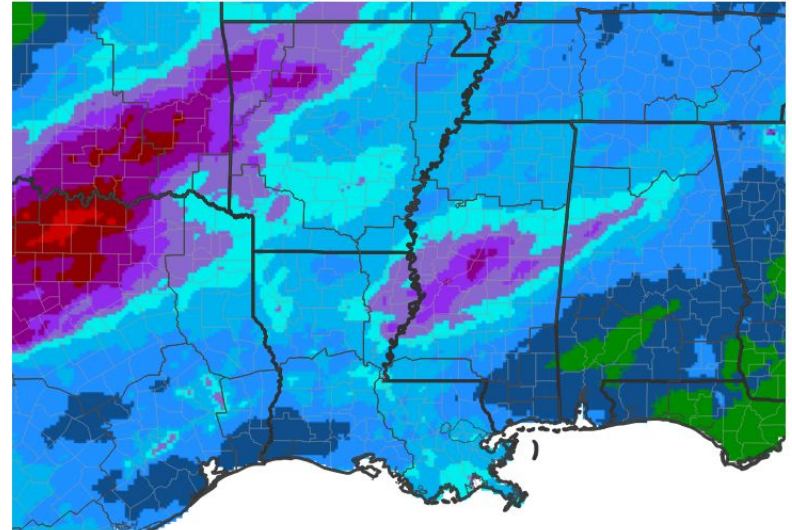




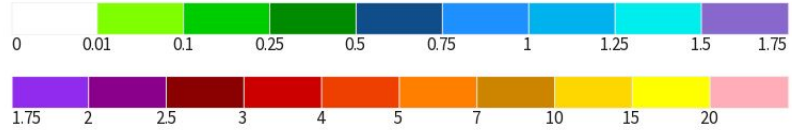
Seven Day Precipitation Forecast

- The 7 day precipitation forecast includes around an inch of rain across most of the state.
- Portions of western and northwest Arkansas could see between 1.5 to 3 inches of rain.

7-Day Quantitative Precipitation Forecast for April 3, 2026–April 10, 2026



Predicted Inches of Precipitation



Source(s): National Weather Service Weather Prediction Center; image courtesy of Drought.gov Last Updated: 04/03/26

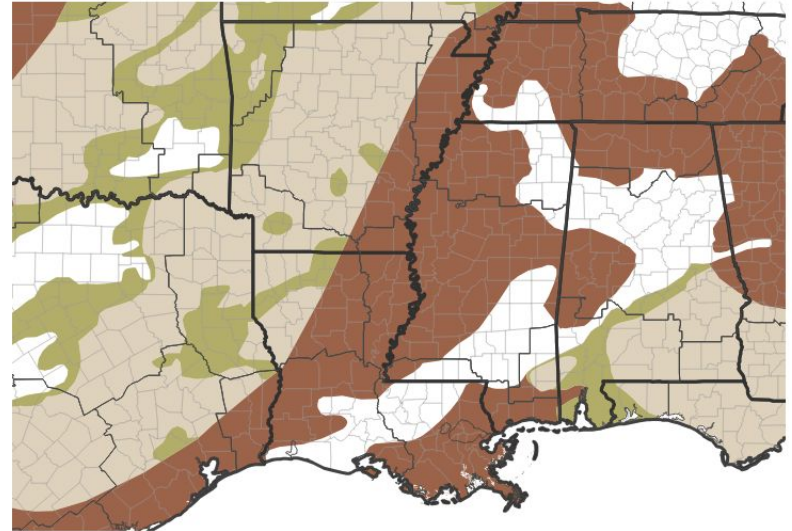


Drought Outlook

The latest monthly and seasonal outlooks can be found on the [CPC homepage](#)

- Drought conditions are expected to persist across parts of eastern Arkansas.
- Some improvement in drought conditions is possible across the rest of the state.

Seasonal (3-Month) Drought Outlook for March 31, 2026–June 30, 2026



Drought Is Predicted To...



Source(s): Climate Prediction Center; image courtesy of Drought.gov

Last Updated: 03/31/26

Links to the latest:

- [Climate Prediction Center Monthly Drought Outlook](#)
- [Climate Prediction Center Seasonal Drought Outlook](#)

