



# Drought Information Statement for Arkansas

Valid January 15, 2026

Issued By: National Weather Service-WFO Little Rock, AR

Contact Information: [nws.littlerock@noaa.gov](mailto:nws.littlerock@noaa.gov)

- This product will be updated February 19, 2026 or sooner if drought conditions change significantly.
  - Please see all currently available products at <https://drought.gov/drought-information-statements>.
  - Please visit <https://www.weather.gov/LZK/DroughtInformationStatement> for previous statements.
  - Please visit <https://www.drought.gov/drought-status-updates> for regional drought status updates.
- 
- Most of Arkansas is currently experiencing drought conditions.
  - Over 45% of the state are in severe drought or greater (D2 or greater).
  - Portions of north central Arkansas are experiencing extreme drought (D3 drought conditions).



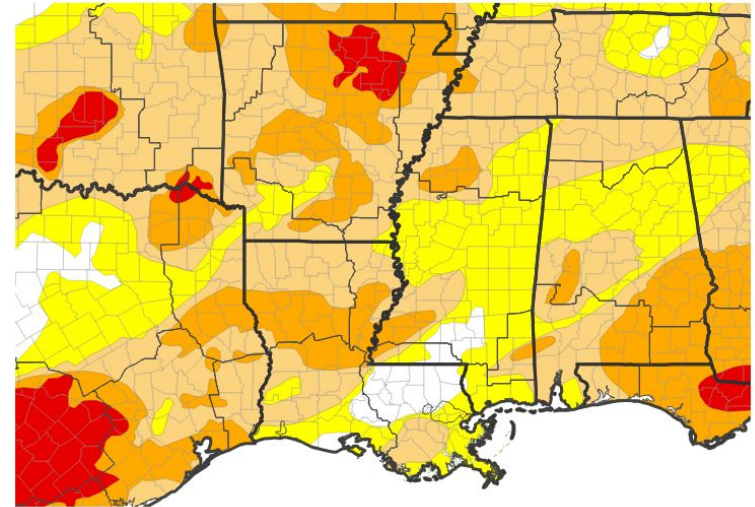


# U.S. Drought Monitor

Link to the [latest U.S. Drought Monitor](#) for Arkansas

- Drought intensity and Extent
  - **D3 (Extreme Drought)**: Portions of north central Arkansas.
  - **D2 (Severe Drought)**: Portions of northern, central, and south central Arkansas.
  - **D1 (Moderate Drought)**: Portions of northwest and eastern Arkansas.
  - **D0: (Abnormally Dry)**: Portions of southwest and extreme southeast Arkansas.

U.S. Drought Monitor



U.S. Drought Monitor



Source(s): NDMC, NOAA, USDA; image courtesy of Drought.gov

Data Valid: 01/13/26



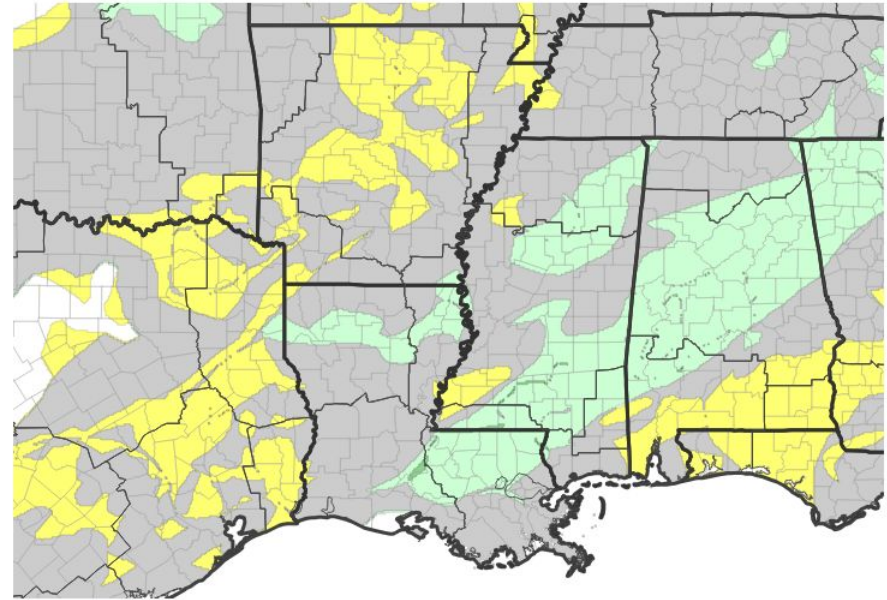


# Recent Change in Drought Intensity

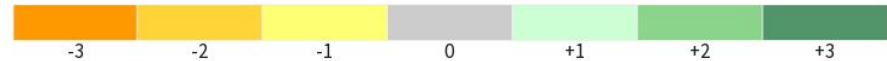
Link to the latest [4-week change map](#) for Arkansas

- One Week Drought Monitor Class Change.
  - Drought Worsened: Much of Arkansas.
  - No Change: Portions of north central and southeast Arkansas.

U.S. Drought Monitor 1-Week Change Map



Drought Change Since Last Week



Source(s): NDMC, NOAA, USDA; image courtesy of Drought.gov

Data Valid: 01/13/26

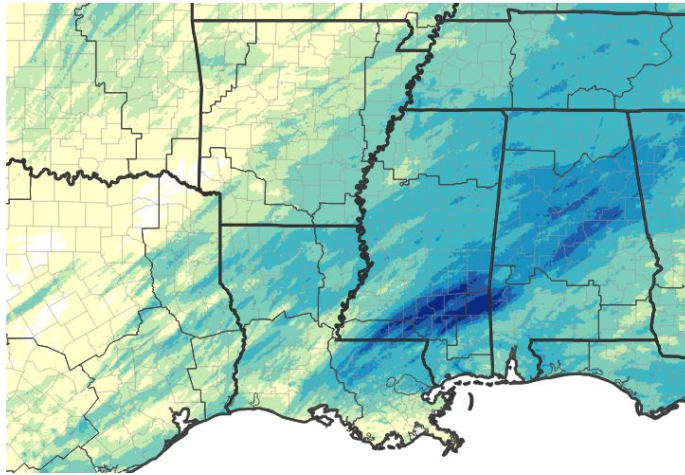




# Precipitation

- Recent dry conditions are reflected in the 30-day departures from normal precipitation.

### 30-Day Precipitation Accumulations (Inches)

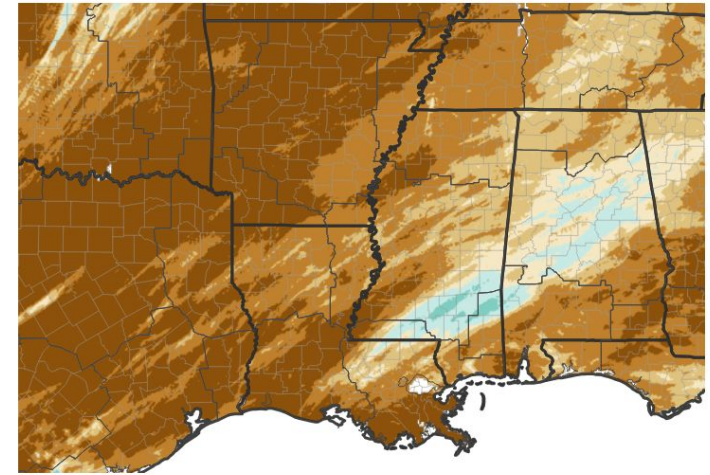


#### Inches of Precipitation

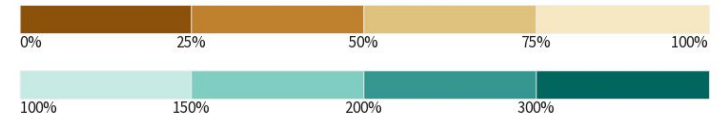


Source(s): National Weather Service Multi-Radar Multi-Sensor System; image courtesy of Drought.gov  
Last Updated: 01/15/26

### 30-Day Percent of Normal Precipitation



#### Precipitation Shown as a Percentage of Normal Conditions



Source(s): National Weather Service Multi-Radar Multi-Sensor System; image courtesy of Drought.gov  
Last Updated: 01/15/26





# Summary of Impacts

Links: See/submit [Condition Monitoring Observer Reports \(CMOR\)](#) and view the [Drought Impacts Reporter](#)

## Fire Hazard Impacts

- Recent dry conditions have promoted enhanced fire danger conditions across Arkansas.
  - [Arkansas Wildfire Danger and Burn Bans](#)

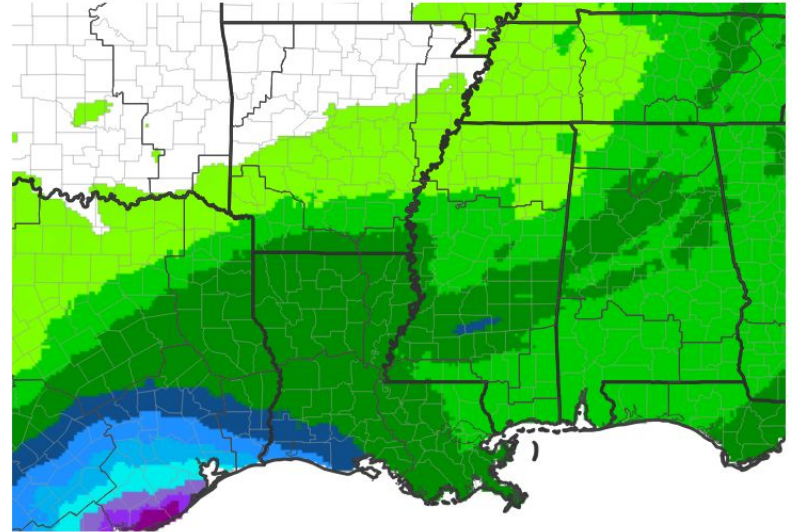




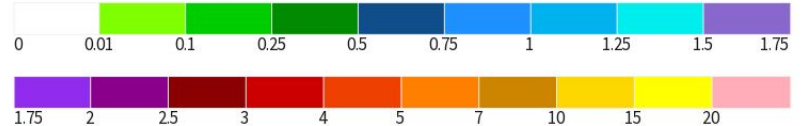
# Seven Day Precipitation Forecast

- 7 day precipitation forecast indicated little in the way of accumulation for Arkansas.

7-Day Quantitative Precipitation Forecast for January 15, 2026–January 22, 2026



Predicted Inches of Precipitation



Source(s): National Weather Service Weather Prediction Center; image courtesy of Drought.gov

Last Updated: 01/15/26



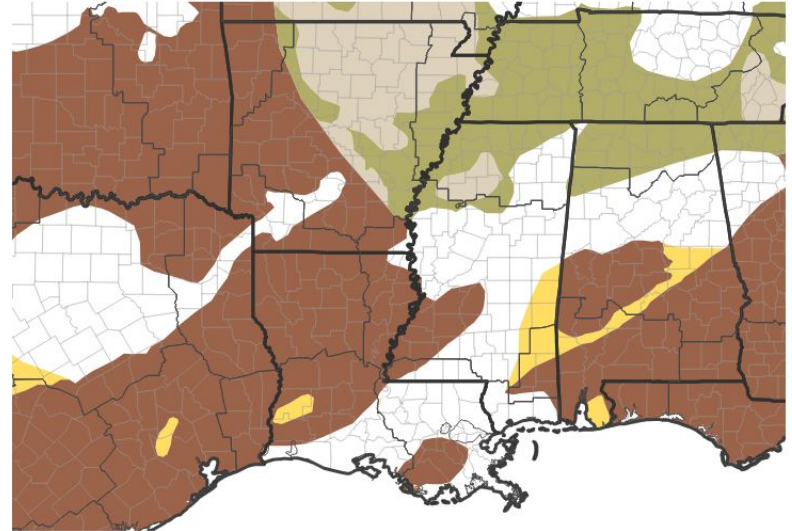


# Drought Outlook

The latest monthly and seasonal outlooks can be found on the [CPC homepage](#)

- Drought improvements are expected across the northeast half of Arkansas through April 30.

**Seasonal (3-Month) Drought Outlook for January 15, 2026–April 30, 2026**



**Drought Is Predicted To...**



Source(s): Climate Prediction Center; image courtesy of Drought.gov

Last Updated: 01/15/26

Links to the latest:

[Climate Prediction Center Monthly Drought Outlook](#)

[Climate Prediction Center Seasonal Drought Outlook](#)

