

# Snow & Ice Storm

## November 30<sup>th</sup>-December 1<sup>st</sup>, 2006

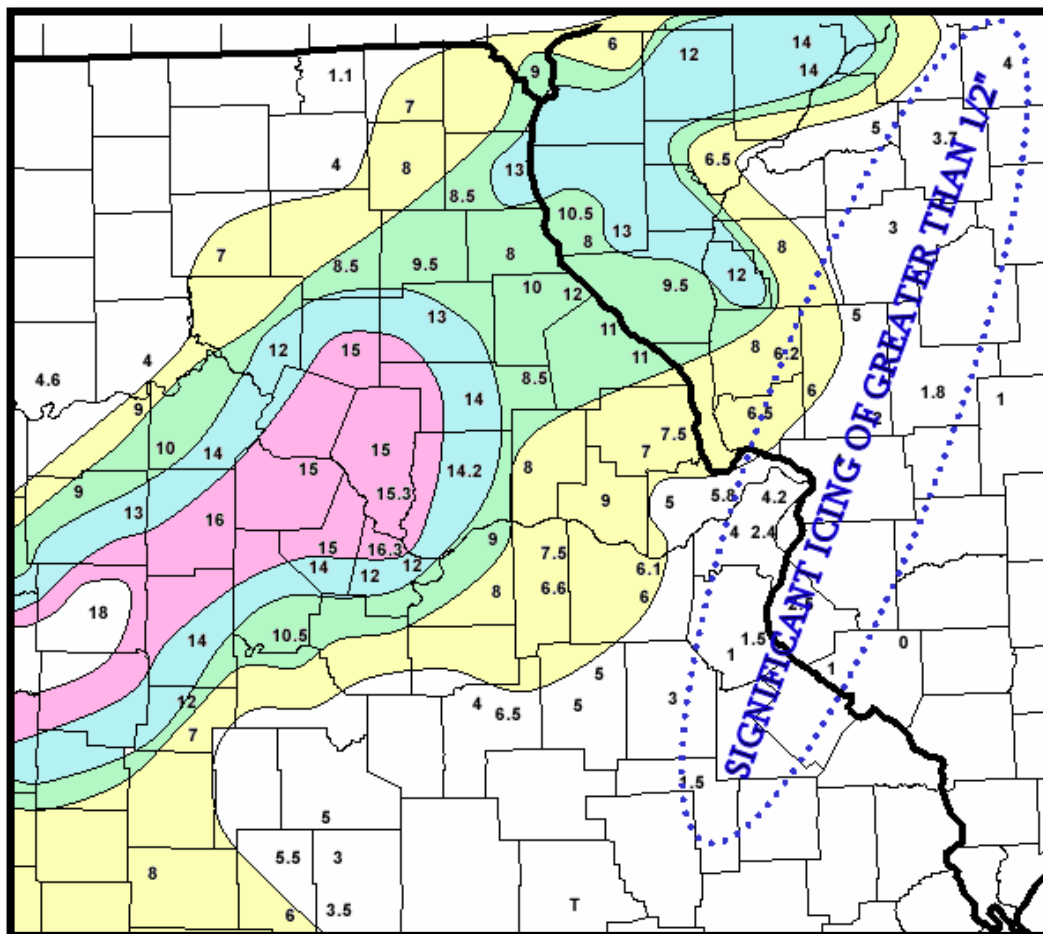
### Overview

A very powerful early season winter storm produced significant amounts of snow and ice across much of the middle of the country on November 30<sup>th</sup> and December 1<sup>st</sup>, 2006. Over a foot of snow fell from Oklahoma to southeastern Wisconsin and accumulations of sleet and freezing rain in excess of 2 inches were common across eastern Missouri and western Illinois. The last winter weather event of this magnitude occurred on January 1<sup>st</sup>, 1999.

The precipitation changed over to all snow during the evening hours of November 30<sup>th</sup> over central and northeast Missouri as well as west-central Illinois. A band of very heavy snow set up over this region with several reports of thundersnow received.

The combination of accumulated ice on trees and power lines and gusty northwest winds produced widespread downed trees and power outages. At one time over 500,000 households and businesses were without power from the St. Louis metropolitan area into central Illinois. Below are maps produced by Ameren Electric Company that highlight the affected customers across Missouri and Illinois, and in the immediate St. Louis Metropolitan Area.

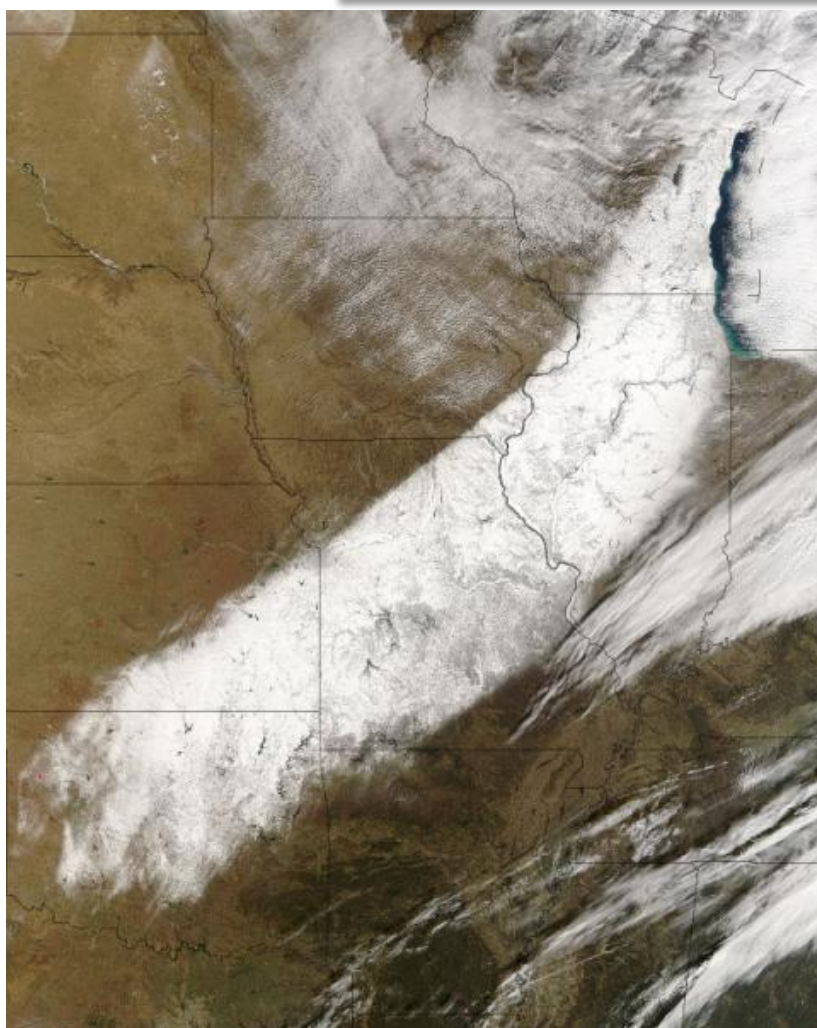
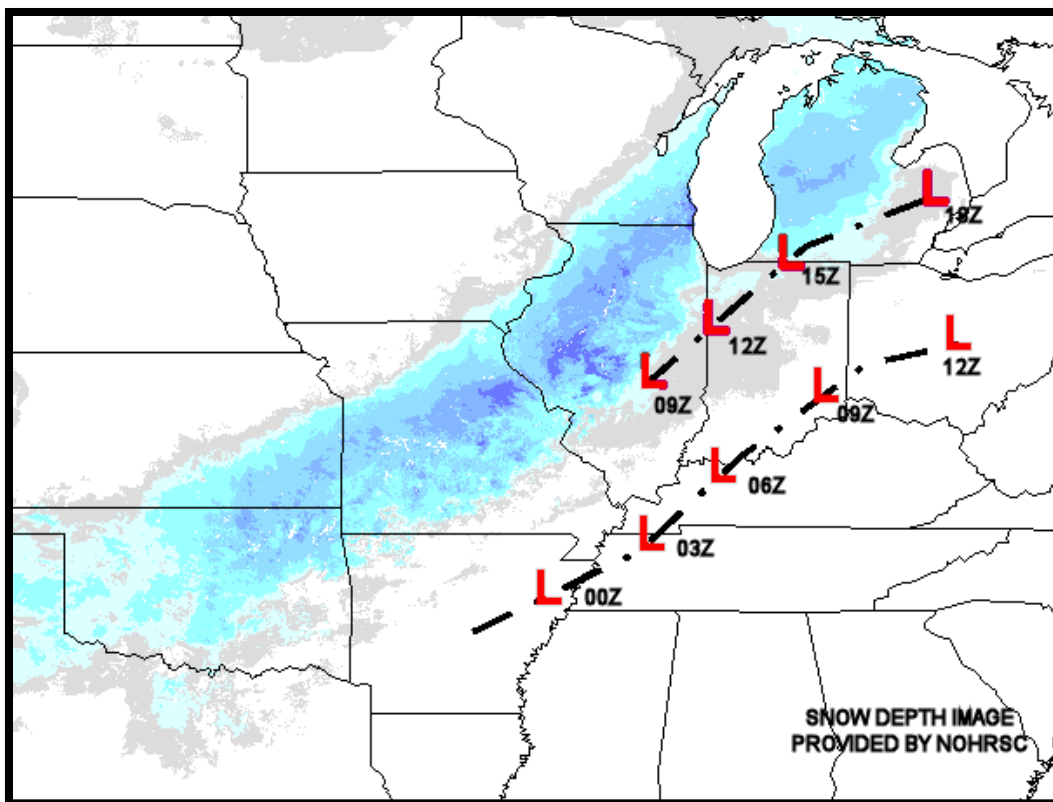
It should be stated that some of these same areas suffered power outages from the two severe storm episodes in mid-July of 2006. Some residents have now been victim of two prolonged power outages, one in extreme heat and the other after a major winter storm with temperatures falling into the teens.



Storm total snowfall map for November 30-December 1, 2006 event. Significant ice accumulation area is outlined with a blue dash line.

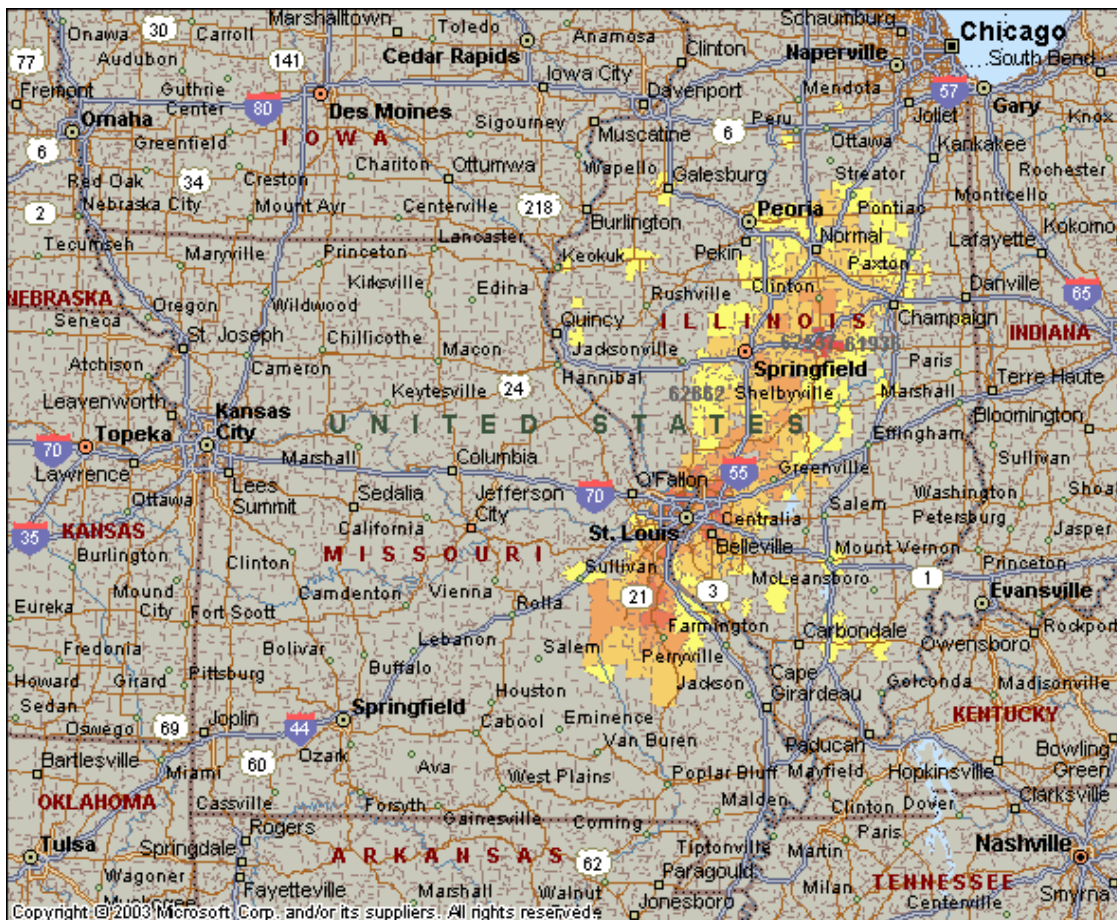
## Snow Depth

Storm track map of the November 30-December 1, 2006 event. Image also includes snow depths with this storm.

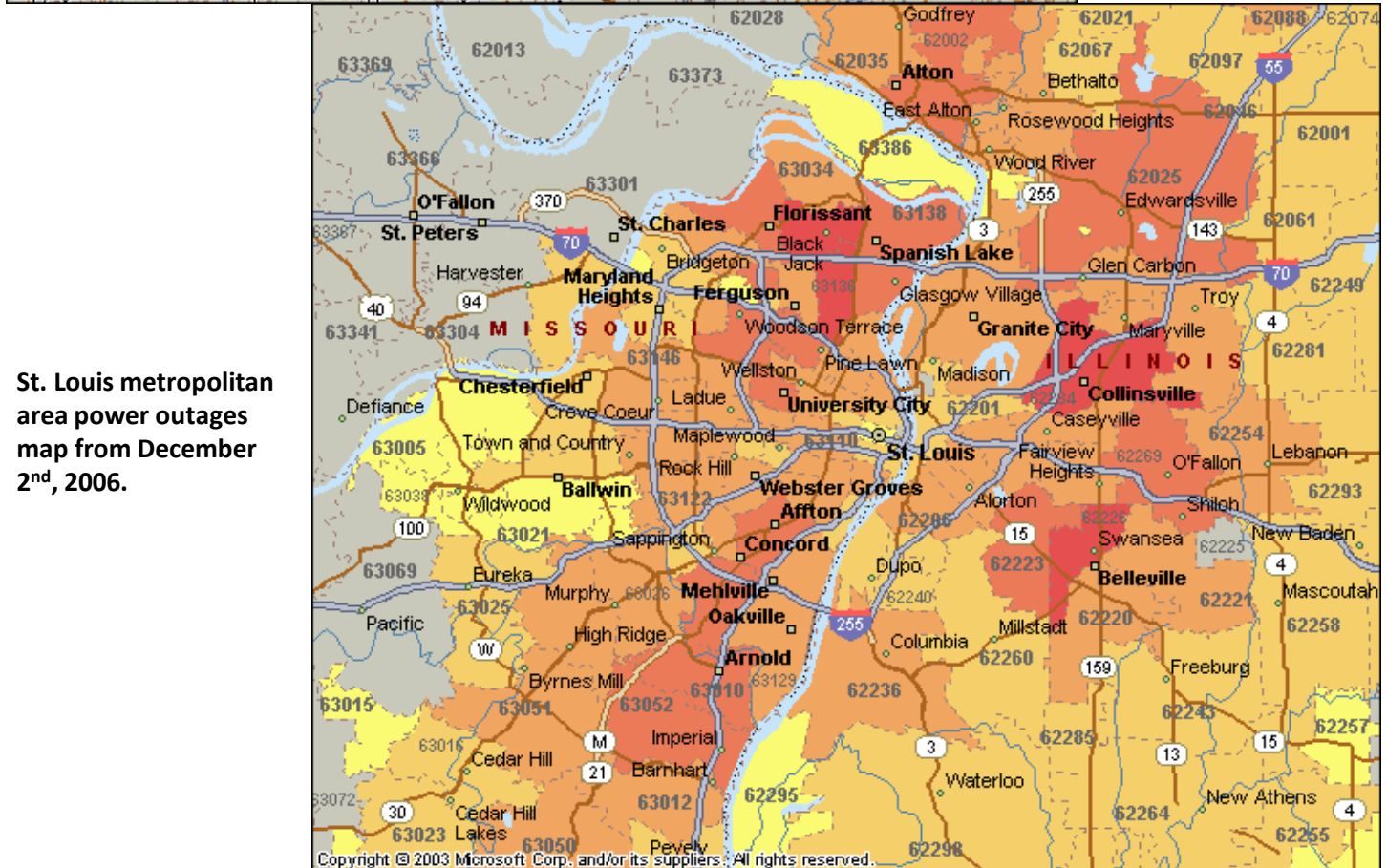


An image from the MODIS polar orbiting satellite highlights in more detail where snow fell from central and northeast Oklahoma, across Missouri and Illinois, and into southeastern Wisconsin. More detailed pictures at 1km, 500m, and 250m meter resolution can be found at the MODIS Rapid Response System Gallery.

# Power Outage Maps



Missouri and Illinois power outages map from December 2<sup>nd</sup>, 2006.



St. Louis metropolitan area power outages map from December 2<sup>nd</sup>, 2006.

## Damage Photos



Trees covered with ice in Waterloo, IL (Monroe County).

Heavy snow on a car in Jefferson City, MO (Cole County).



Tree fell onto a car in the Central West End (City of St. Louis).

*Any questions regarding this event review should be address to [w-lsx.webmaster@noaa.gov](mailto:w-lsx.webmaster@noaa.gov)*