

Monroe County and Callaway County Tornadoes

October 17th-18th, 2007

Overview

Several tornadoes occurred along the leading edge of a squall line (bow echo) system during the late evening hours of October 17th and early morning hours of October 18th. Three tornadic damage tracks were uncovered over parts of Monroe county Missouri from the line of severe storms that moved through this area just before and just after Midnight (October 17-18, 2007).

The first of three tornadic damage tracks was uncovered south and southeast of Madison in southwest Monroe county. The tornado initially touched down at a farmstead near the intersection of Highways 151 and M or 7 miles south of Madison, Missouri at approximately 11:55 PM CDT. A machine shed and several trees were damaged. A corn field to the north was flattened by the tornado. The tornado skipped northeast and slightly damaged a second machine shed near the intersection of County Roads 85 and 99. The tornado continued to move northeast crossing County Road 82 and damaged a barn and several trees. The tornadic damage track ended 0.25 mile northwest of the intersection of County Roads 82 and 81. The total damage path for this tornado was 4.0 miles while the damage width was between 30 and 40 yards. The damage associated with this tornado was rated EF0.

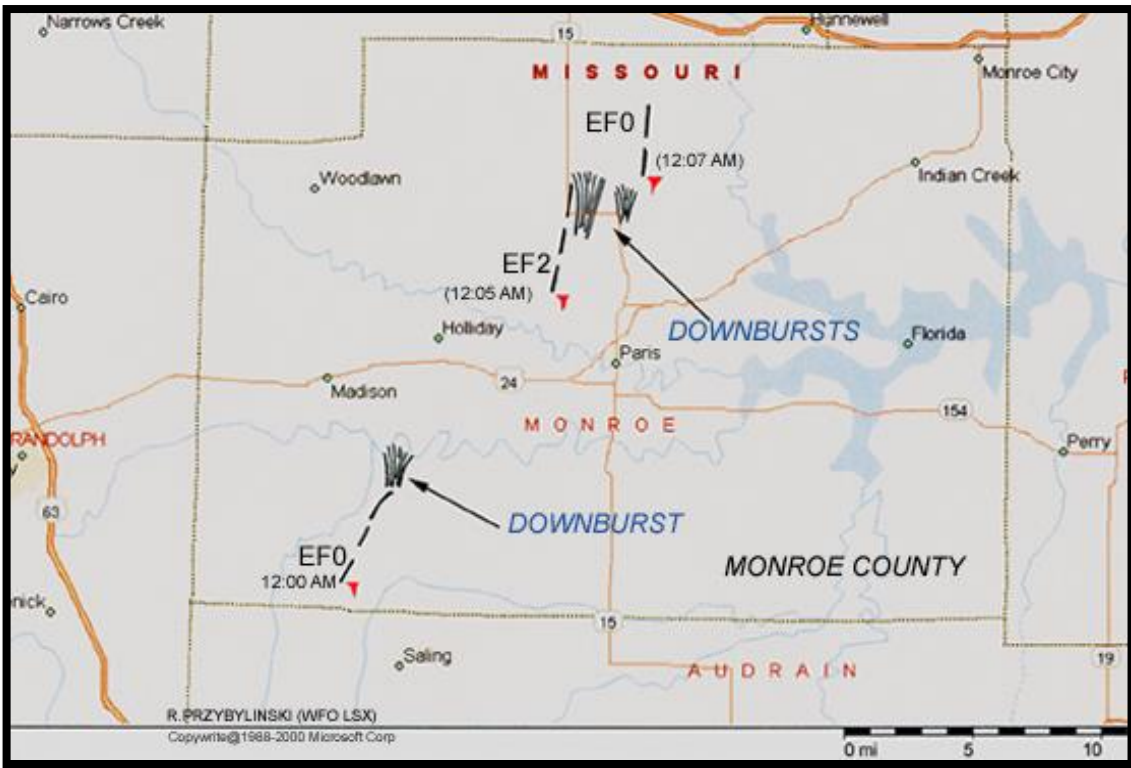
The second tornado initially touched down and destroyed a mobile home just south of Highway F, about a third of a mile east of County Road 419 (3.5 miles northwest of Paris, Missouri) at approximately 12:05 AM CDT. The entire base frame of the mobile home was tossed third of a mile to the north from its original location into a soybean field. Two occupants of the mobile home were thrown several hundred feet to the north and killed by the tornado. Approximately 100 yards to the north northeast a large barn and machine shed were destroyed by the tornado. Debris from the barn, machine shed and mobile home could be found along a path that stretched up to 4 miles from the initial touchdown point of the tornado. Residences within the 4 mile corridor identified clothing, insulation, pieces of furniture and metal. The tornado skipped within the 4 mile track. Isolated tree damage was found further along the path before the tornado lifted and dissipated just north of the intersection of Highway 15 and State Highway J. The total length of the second tornado was 4.1 miles while the max damage width was approximately 90 yards. Damage from the tornado was rated high-end EF2.

A third tornado initially touched just south of the intersection of County Roads 383 and 414 (approximately 7 miles north of Paris, Missouri) at approximately 12:07 AM CDT. The tornado knocked down a number of trees along its path as it moved north and crossed County Road 392. The tornado continued to move north and crossed Highway CC, damaging a number of trees and also one machine shed just north of the highway before lifting and dissipating. The total length of the third tornado was 1.7 miles while the max damage width was approximately 50 yards. The damage from the third tornado was rated EF0.

In Callaway County, a swath of damaging downburst winds extended from 1.5 miles north of Interstate 70 to 2.5 miles south of Hatton, Missouri. Tree and large limb damage along with minor grain bin damage was uncovered along this path. The width of the damage area ranged from 100 yards to half a mile. At approximately 11:55 PM CDT, a weak tornado touched down and damaged a horse stable, double wide mobile home, trees and a large garage near County Road 264. The total length of the damage path was half a mile while the max damage width was approximately 30 yards. The damage from the tornado was rated EF0.

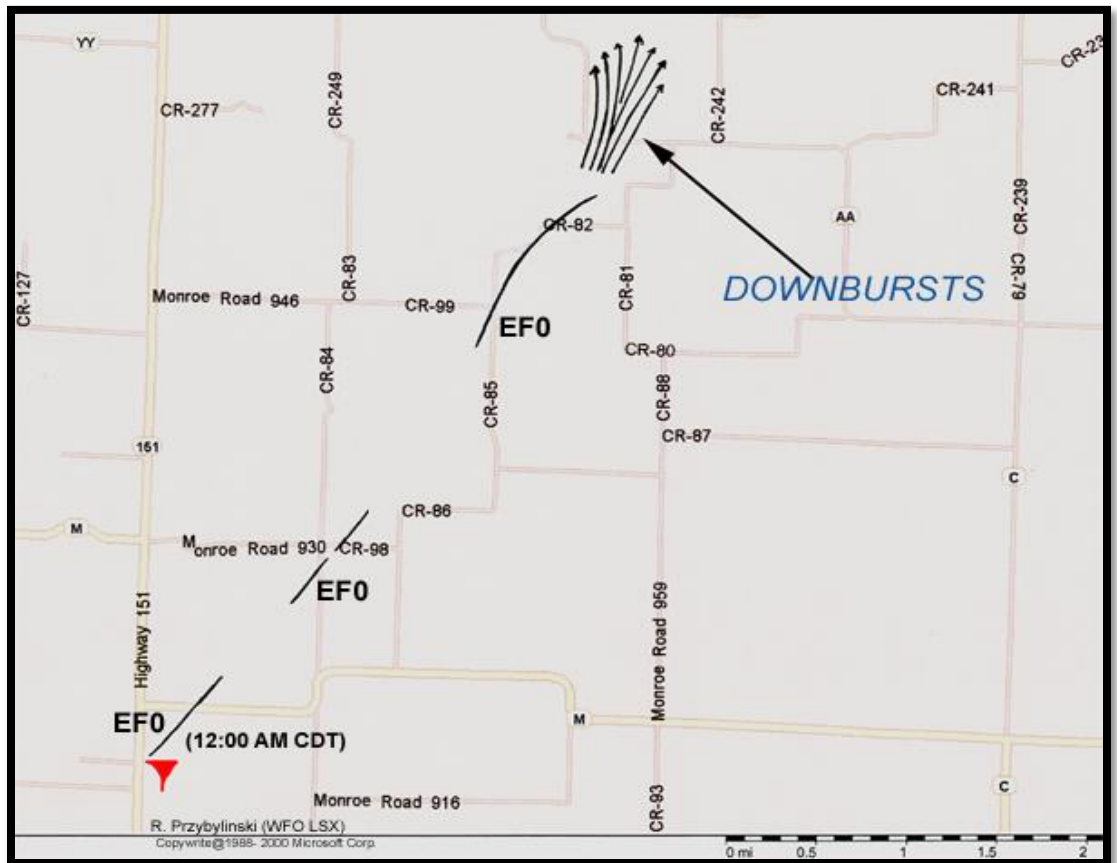
A second swath of damaging downburst winds extended from the small community of Calwood, Missouri in Callaway County to near the intersection of Highway Z and Interstate 70. A grain elevator was damaged in Calwood while some trees and large tree limbs were blown down by the severe winds. The width of the damage area ranged from 50 to 125 yards.

Damage Maps

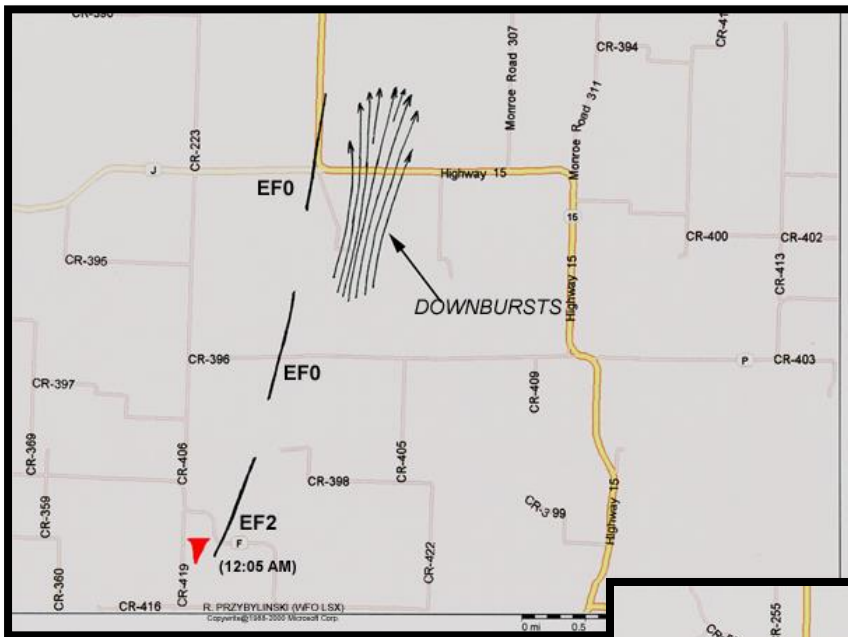


Damage map of the tornado tracks and wind damage in Monroe County Missouri October 17-18, 2007.

Damage map of the first tornado track and wind damage in Monroe County Missouri October 17-18, 2007.

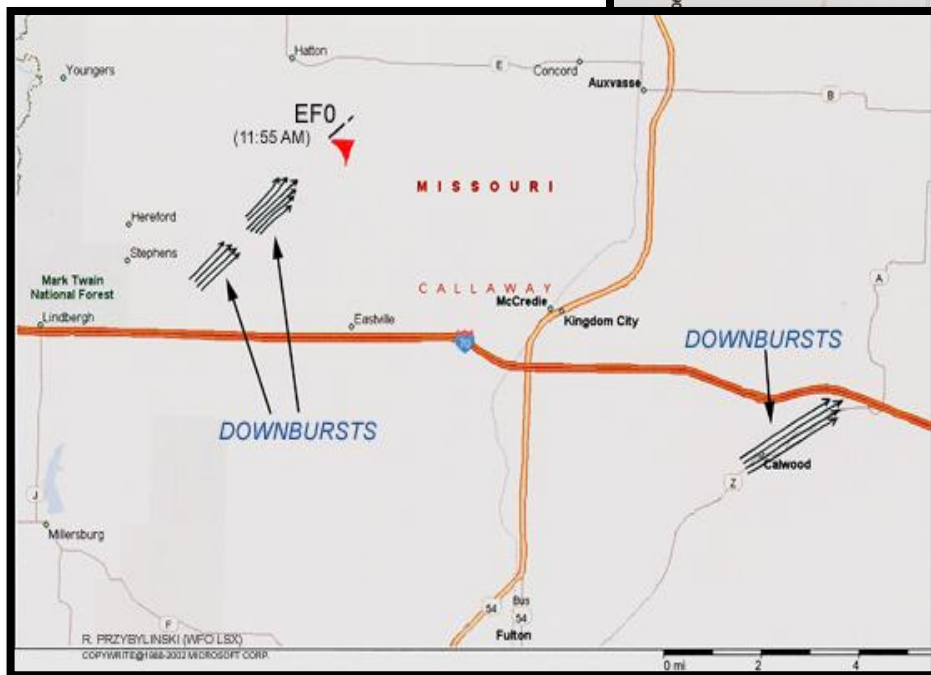


Damage Maps



Damage track of the second and strongest of the three tornadoes across Monroe County Missouri (October 17-18, 2007). The second tornado formed approximately 3.5 miles northwest of Paris, Missouri.

Damage map of the third tornado track in Monroe County Missouri October 17-18, 2007.



Damage Map showing areas of damaging downburst winds and one weak tornado touchdown 2.5 miles southeast of Hatton, Missouri. The downburst winds caused mainly tree and large limb damage north of Interstate 70. The second area of downburst winds extended from Calwood, MO to Interstate 70 along Highway Z. Damage over this area was confined to grain bin - catwalk damage and trees and large limbs down. The tornadic damage path was half a mile in length and approximately 30 to 40 yards wide.

Damage Photos



(Tornado #1) Roof of a barn damaged and tossed to the northeast some 50 to 100 yards. The barn was located on the north side of County Road 943. (Viewing northwest).



(Tornado #1 - southwest of Paris, MO) Several trees blown down along the path of the tornado.



(Tornado #2 - northwest of Paris, MO) A few remains of the single wide mobile home just south of Highway F. (Viewing east).



(Tornado #2) Remains of a large barn and machine shed. Debris from this barn and machine shed was noted from the initial touchdown location and spread up to 4 miles north of this site. (Viewing southeast).

Damage Photos



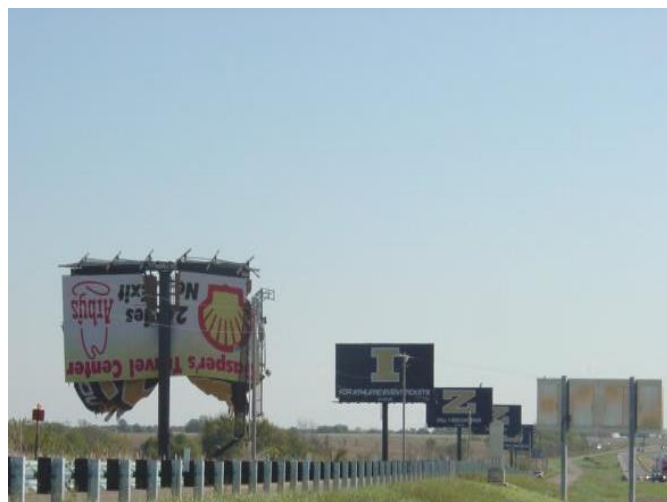
(Tornado #2) Remains of the base frame from the single wide mobile home. The base frame was tossed by the tornado and located a third of a mile to the north-northwest of the mobile home's initial site in a soybean field. Debris from the tornado (e.g. clothing, pieces of furniture) was displaced as far as 3 to 4 miles to the north of the initial mobile home site (Viewing north-northwest).



(Tornado #3 - north of Paris, MO) Machine shed near the southern part of the third tornadic damage track. (Viewing north-northeast).



(Tornado #3) Large tree damage at Highway CC. This tornado damaged several large trees along its path. (Viewing southeast).



The "M" for MIZZOU is missing along Interstate 70 near Kingdom City, Missouri. (Viewing east-northeast).

Damage Photos



Horse stable severely damaged by the weak tornado near County Road 264 (Callaway County). Parts of the horse stable were tossed 30 to 40 yards to the north-northwest.

A large garage was severely damaged by the weak tornado near County Road 264 (Callaway County). Parts of the garage were tossed 30 to 40 yards to the northeast. Additional tree damage was found 60 to 80 yards to the northeast. (Viewing north).



The grain-bin storage facilities including the cat walk was damaged in Calwood, Missouri. (Viewing north)

Please note that while the severe weather data presented in this event synopsis has been quality controlled, it is still considered unofficial. Official reports & statistics for severe weather events can be found in the **Storm Data** publication (<http://www.ncdc.noaa.gov/IPS/sd/sd.html>) or **Storm Events Database** (<http://www.ncdc.noaa.gov/stormevents/>), available from the National Centers for Environmental Information (NCEI) web page [formerly the National Climate Data Center (NCDC)].

More detailed tornado track information can be accessed using the National Weather Service Damage Assessment Toolkit for all tornadoes beginning in 2012. <https://apps.dat.noaa.gov/StormDamage/DamageViewer/>

Any questions regarding this event review should be address to w-lsx.webmaster@noaa.gov