

St. Clair County Tornado

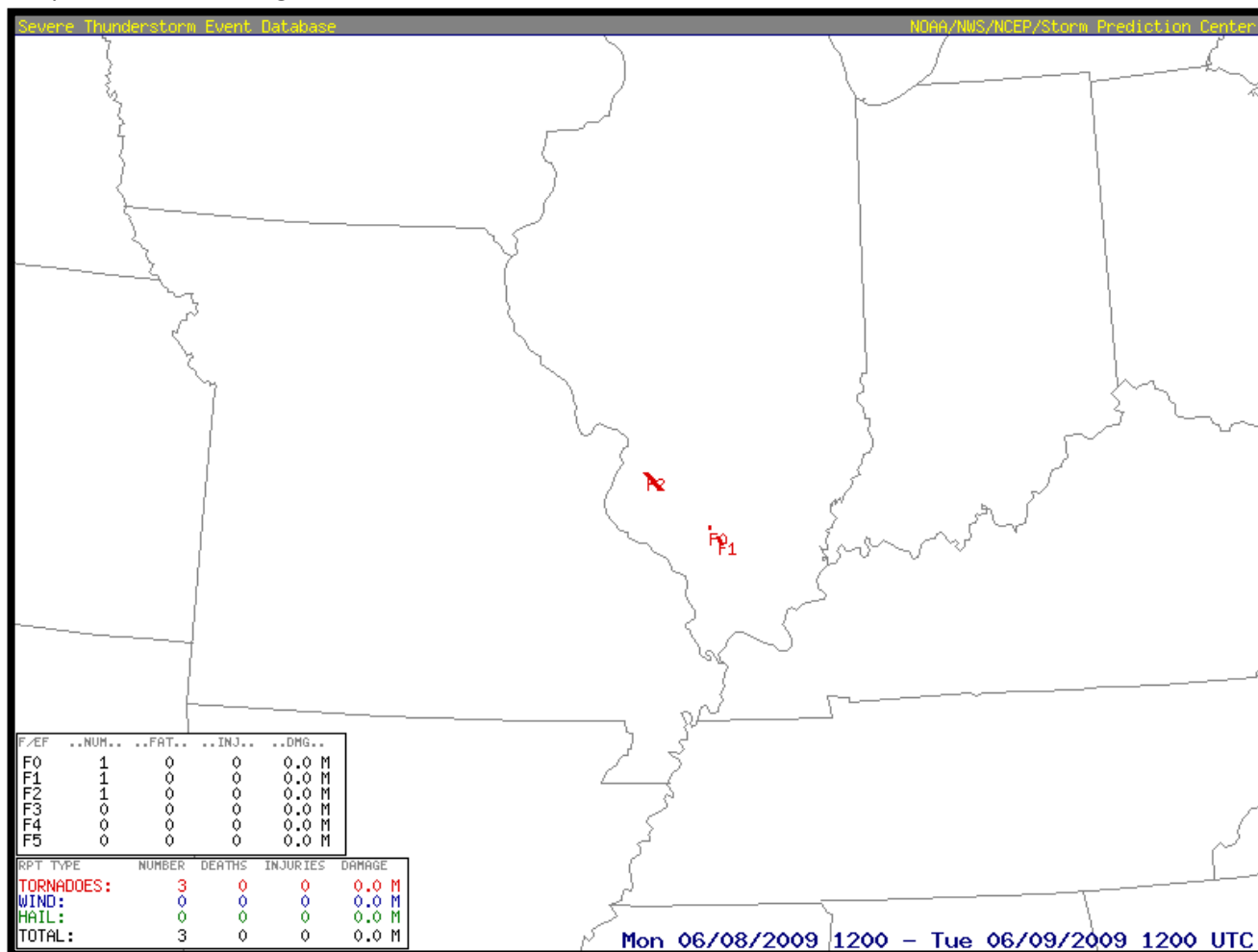
June 8th, 2009

Overview

A survey conducted by the National Weather Service in St. Louis indicated that the first wind damage produced by the storm was near Interstate 64 and Green Mount Road on the southwest side of O'Fallon, Illinois was caused by straight line winds.

The tornado touched down just northeast of the intersection of North Green Mount Road and Lebanon Avenue in the Eagles Landing Subdivision. From this point the tornado produced a nearly continuous damage path that extended to about 1 mile southeast of the intersection of Highway 4 and Jefferson Road. It finally lifted as it approached the Kaskaskia River.

The total path length of the tornado is estimated to be 12.8 miles, with an average width of damage of about one-tenth of a mile. However, straight line winds did cause lesser damage over a wider swath of up to 3 miles. The greatest damage was to a home located just west of the intersection of Highway 4 and Jefferson Road. Damage there was rated EF2 on the Enhanced Fujita Scale. Elsewhere along the path of the tornado, the damage was generally in the EF0-EF1 range.



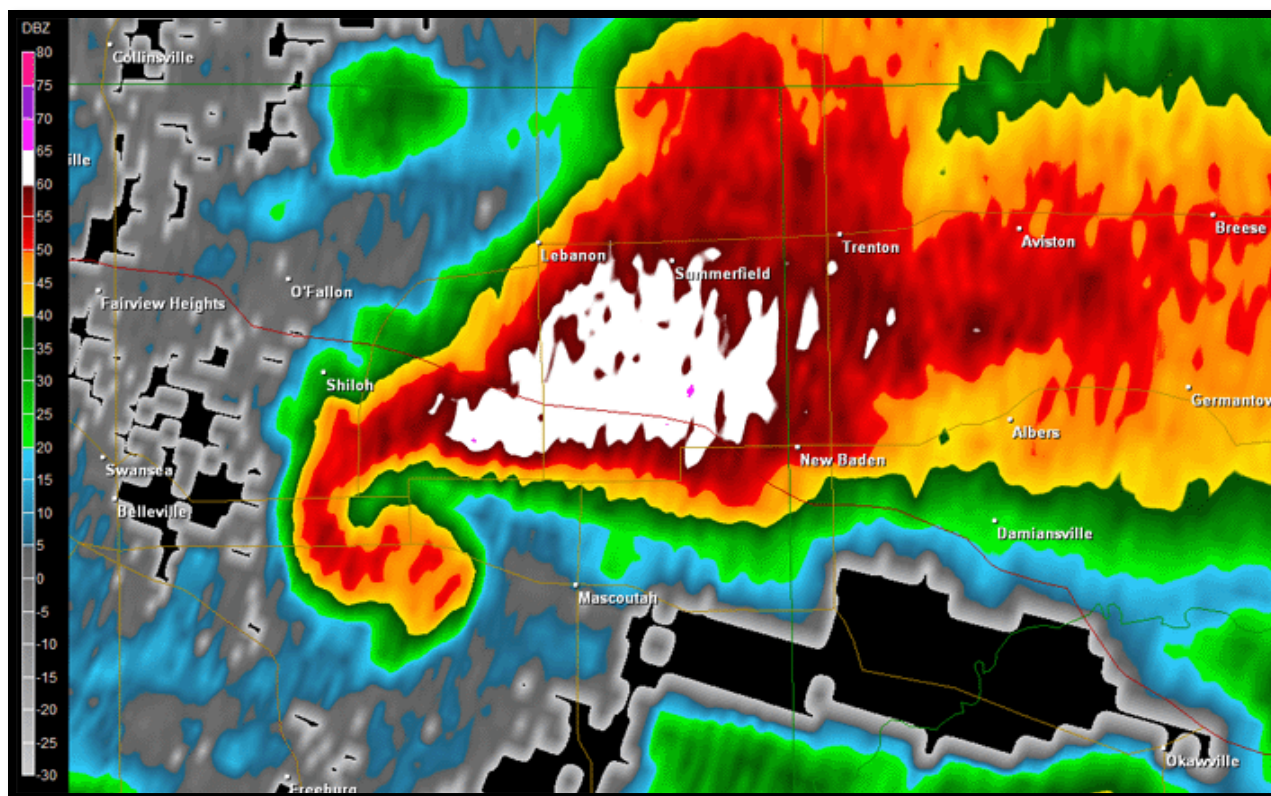
Storm Track



Damage Surveys

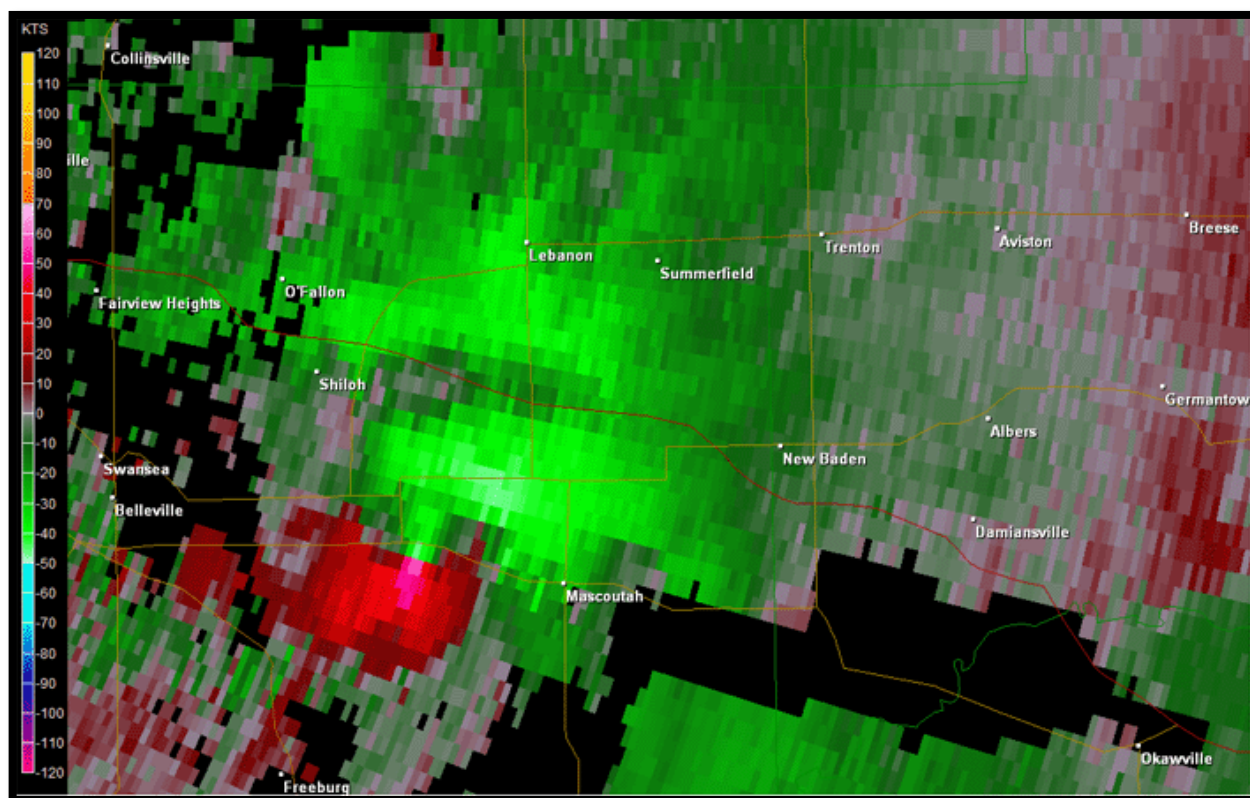


Radar Data



Radar Reflectivity Image of Tornado Supercell (5:37 p.m.)

Radar Storm Relative Velocity Image of Tornado Supercell (5:37 p.m.)



Please note that while the severe weather data presented in this event synopsis has been quality controlled, it is still considered unofficial. Official reports & statistics for severe weather events can be found in the **Storm Data** publication (<http://www.ncdc.noaa.gov/IPS/sd/sd.html>) or **Storm Events Database** (<http://www.ncdc.noaa.gov/stormevents/>), available from the National Centers for Environmental Information (NCEI) web page [formerly the National Climate Data Center (NCDC)].

More detailed tornado track information can be accessed using the National Weather Service Damage Assessment Toolkit for all tornadoes beginning in 2012. <https://apps.dat.noaa.gov/StormDamage/DamageViewer/>

Any questions regarding this event review should be address to w-lsx.webmaster@noaa.gov