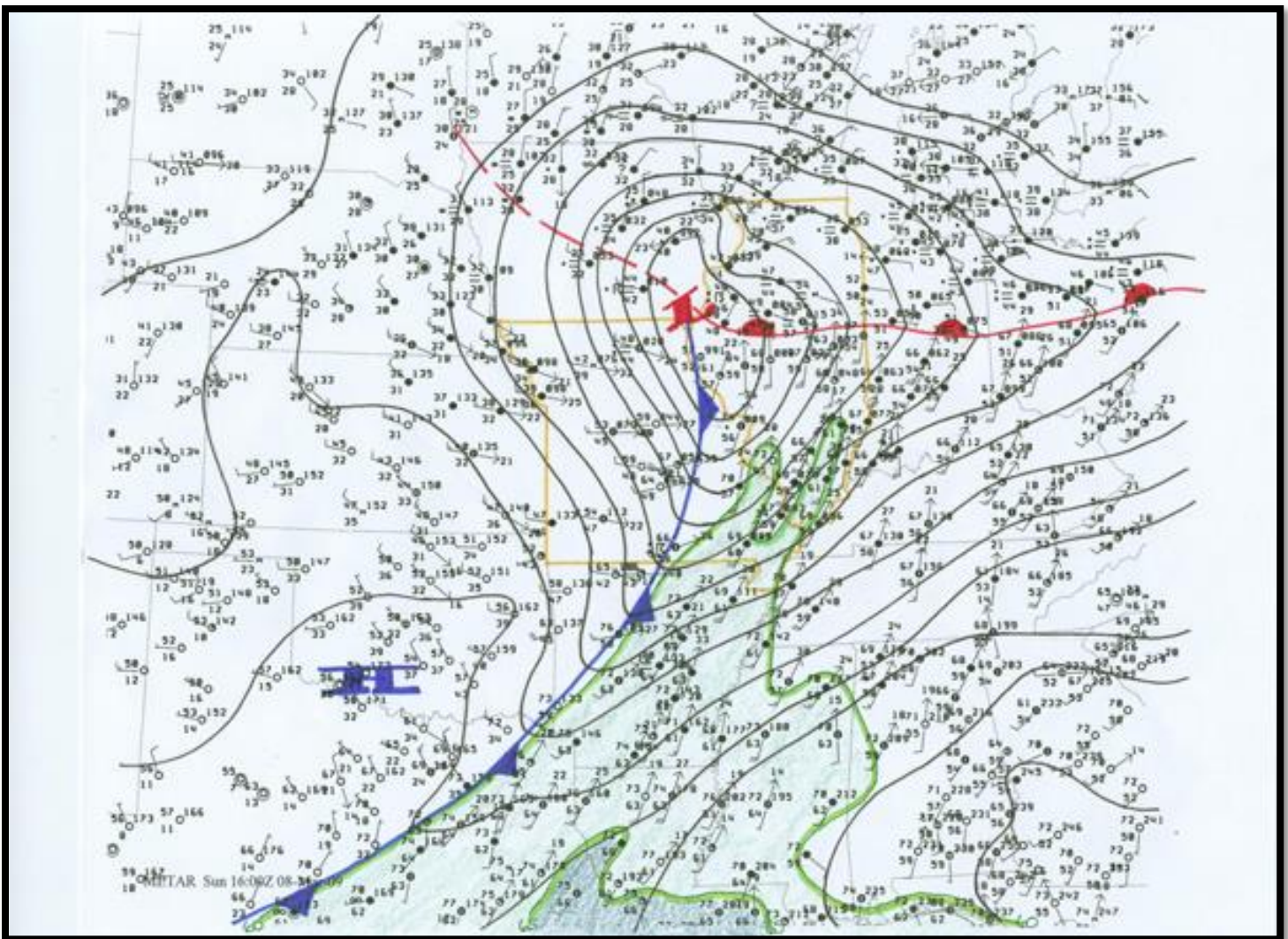


# Severe Thunderstorm Outbreak

March 8<sup>th</sup>, 2009

## Overview

A fast moving line of supercell thunderstorms brought hail, damaging winds, and tornadoes to eastern Missouri and southwest Illinois. A total of 10 tornadoes have been documented with the severe thunderstorm event that occurred during the late morning and early afternoon hours of Sunday March 8<sup>th</sup>, 2009. After the line of thunderstorms moved across the area, strong gradient (non-thunderstorm) winds caused additional minor damage and power outages to the area.



Surface Analysis For 16:00 UTC (11:00 a.m.) March 8<sup>th</sup>, 2009 - Analyzed By Lead Forecaster Fred Glass

# Damage Survey

## **EF2 Tornado Confirmed near Rosedale in Jersey County, Illinois**

Event Time: 10:56-10:57 a.m.

Path Length=1.5 miles

Max Width=100 yards

Max Damage Rating=EF2

Damage: Two cabins along the east side of the Illinois River sustained minor roof and siding damage, while a third cabin sustained severe damage. A fourth cabin was completely destroyed. Numerous large trees were severed or snapped near the base of the trunk. Debris from the cabin was found 300 yards to the northeast. A farmstead further northeast suffered varying degrees of damage on the property. One large machine shed sustained roof and side damage, while a small garage was totally destroyed. The residence home sustained minor roof damage. A witness observed this tornado and stated that 1.25 inch diameter hail occurred prior to the tornado.

## **EF0 Tornado Confirmed near Rosedale in Jersey County, Illinois**

Event Time: 10:57-11:00 a.m.

Path Length=4 miles

Max Width=40 yards

Max Damage Rating=EF0

Damage: The roof of one machine shed was lifted and destroyed on a farmstead while tree and branches snapped along Hollow Creek Road. A water pump house was nearly destroyed 2.5 miles south of Fieldon, Illinois.

## **EF1 Tornado Confirmed near Roodhouse in Greene County , Illinois**

Event Time: 11:10-11:15 a.m.

Path Length=5.2 miles

Max Width=350 yards

Max Damage Rating=EF1

Damage: Church severely damaged, with parts of the structure moved 10 feet. Farm sustained significant damage, with 4 machine sheds completely destroyed.

## **EF1 Tornado Confirmed Near Prairie in Randolph County, Illinois**

Event Time: 11:25-11:26 a.m.

Path Length: 1 mile

Max Width: 75 yards

Max Intensity: EF1

Damage: 3 homes damaged on Richfield Road, 2 with minor damage and 1 had a portion of the roof removed.

## **EF1 Tornado Confirmed Near Grigg and Baldwin in Randolph County, Illinois**

Event Time: 11:27-11:30 a.m.

Path Length: 2.5 miles

Max Width: 100 yards

Max Intensity: EF1

Damage: 2 Mobile homes were destroyed along with trees snapped.

## Damage Surveys

### **EF1 Tornado Confirmed near Carlinville in Macoupin County, Illinois**

Event Time: 11:30-11:35 a.m.

Path Length= 4-5 miles

Max Width= N/A

Max Damage Rating=EF1

Damage: A lumber shed was destroyed, two grain bins sustained damage, one was blown off its foundation and the other had its anchor bolts sheared off. A small shed and outbuilding was also destroyed.

### **EF0 Tornado Confirmed Near Baldwin and Tilden in Washington County, Illinois**

Event Time: 11:33 - 11:37 a.m..

Path Length: 3.8 miles

Max Width: 50 yards

Max Intensity: EF0

Damage: Roof removed from a cinder block outbuilding and tossed across Doza Creek Road.

### **EF2 Tornado Confirmed Near Oakdale in Washington County, Illinois**

Event Time: 11:46-11:51 a.m.

Path Length: 5 miles

Max Width: 200 yards

Max Intensity: EF2

Damage: 2 large double-poled wooden high tension towers snapped at the base, several pole sheds destroyed with debris scattered hundreds of yards. Numerous trees snapped.

### **EF0 Tornado Confirmed Near Washington County Conservation Area in Washington County, Illinois**

Event Time: 11:56-11:58 a.m.

Path Length: 3 miles

Max Width: 50 yards

Max Intensity: EF0

Damage: Trees and branches snapped.

### **EF0 Tornado Confirmed Near Beaucoup in Washington County, Illinois**

Event Time: 12:00-12:01 p.m.

Path Length: less than a mile

Max Width: less than 50 yards

Max Intensity: EF0

Damage: Outbuilding severely damaged with debris in trees.

## Damage Surveys

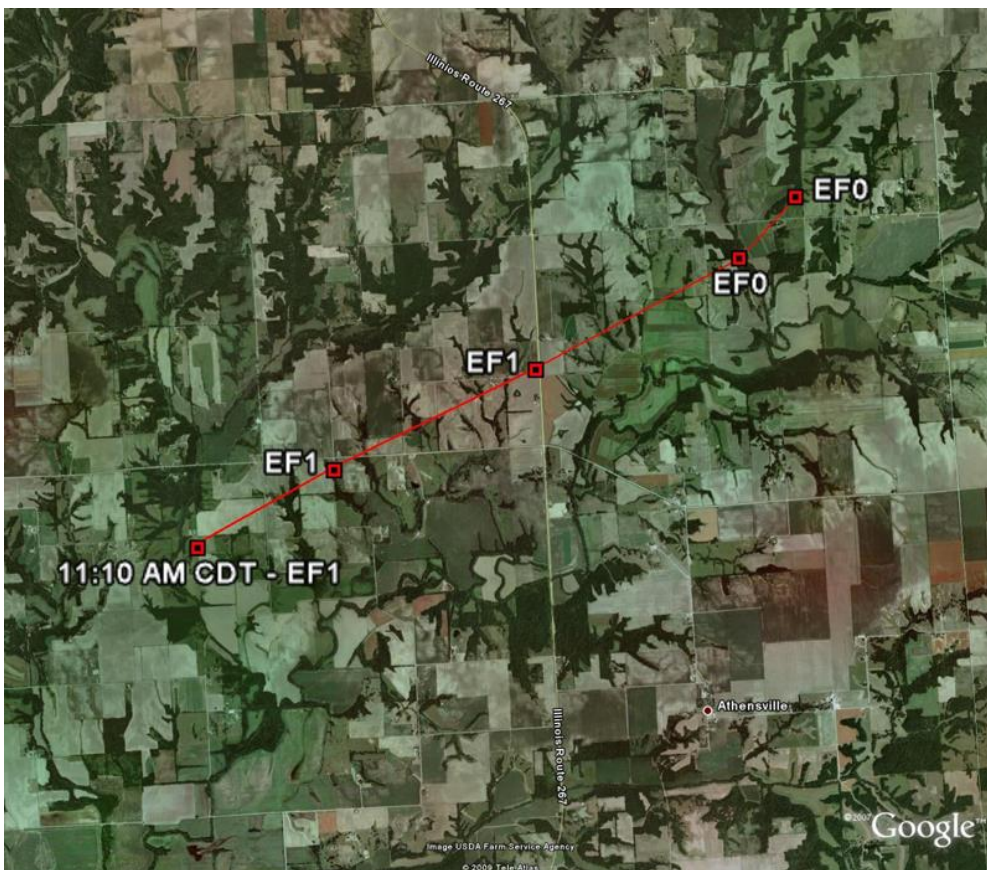
### Official Peak Wind Gusts For March 8<sup>th</sup>, 2009 (Non-Convective):

St. Charles	63 mph
St. Louis	60 mph
Jefferson City	58 mph
Chesterfield	54 mph
Columbia	47 mph
Cahokia	44 mph
Quincy	43 mph

# Damage Surveys



Tornado Track Map For Jersey County



Tornado Track Map For Greene County

## Damage Pictures



Jersey County

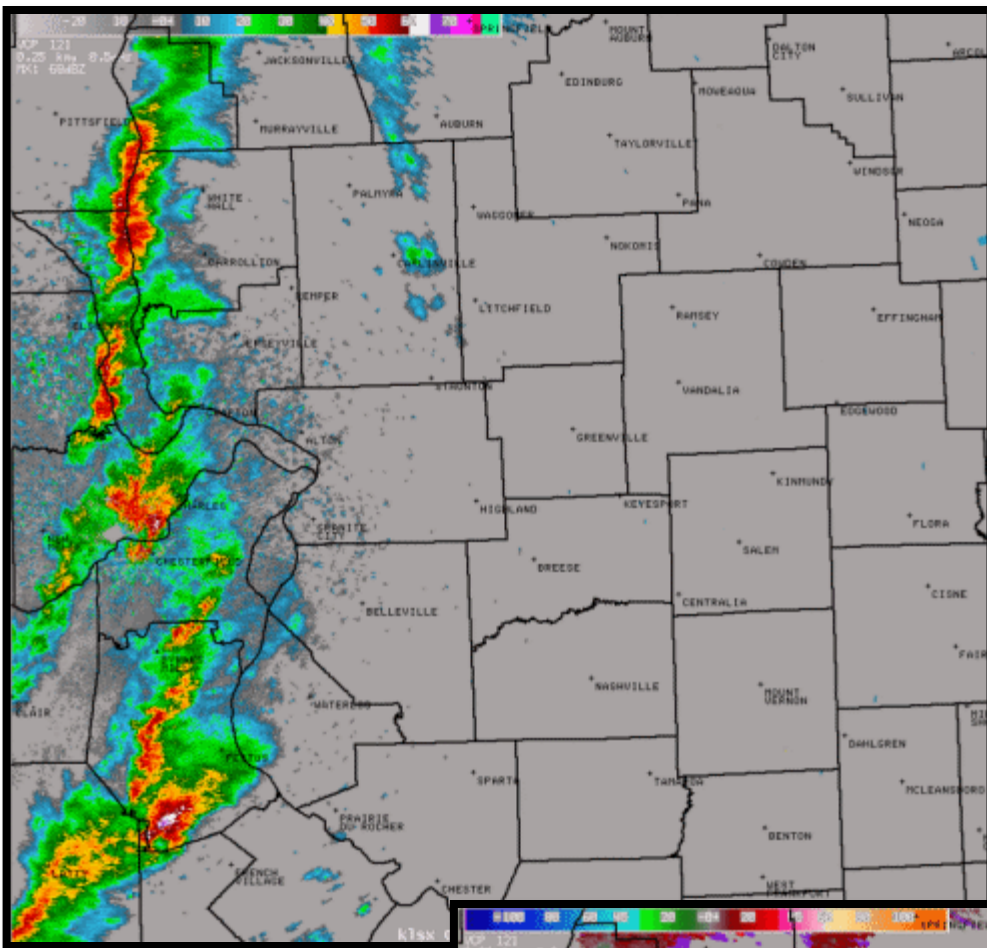


Greene County



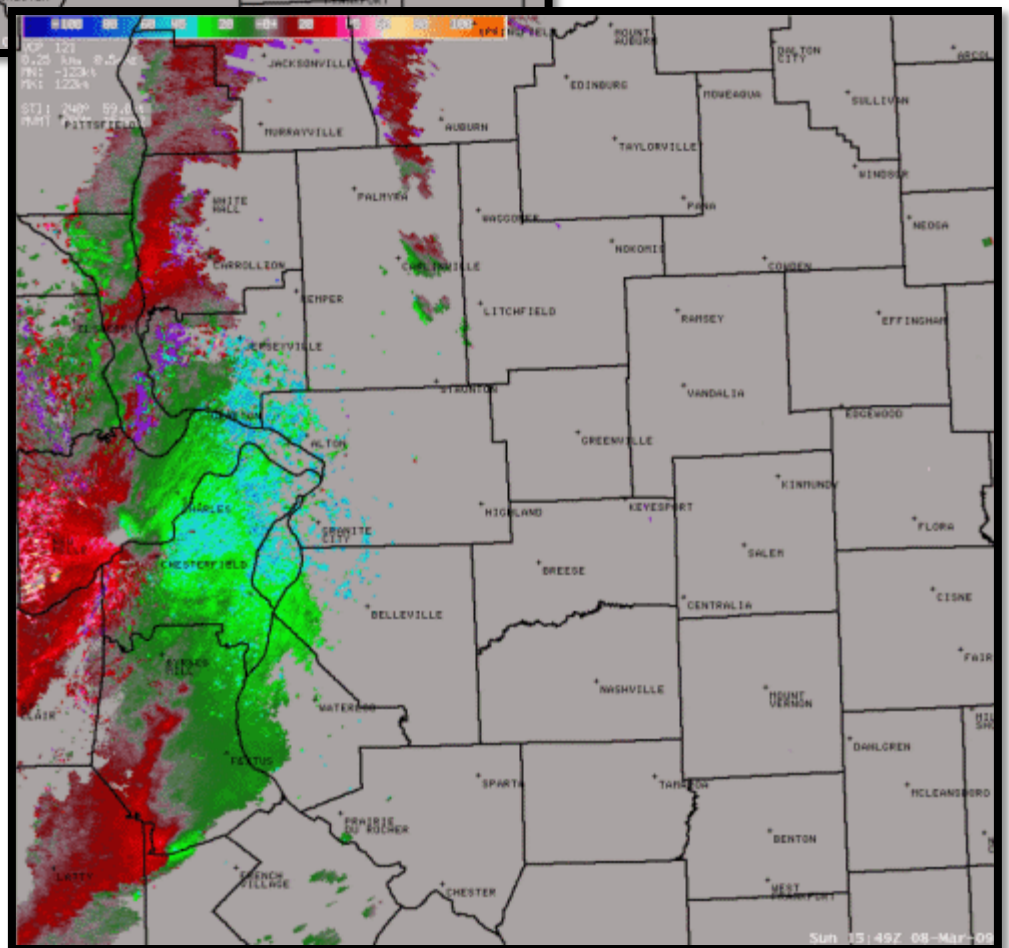
Macoupin County

# Radar Data



Storm Reflectivity

Storm Relative Motion



Please note that while the severe weather data presented in this event synopsis has been quality controlled, it is still considered unofficial. Official reports & statistics for severe weather events can be found in the **Storm Data** publication (<http://www.ncdc.noaa.gov/IPS/sd/sd.html>) or **Storm Events Database** (<http://www.ncdc.noaa.gov/stormevents/>), available from the National Centers for Environmental Information (NCEI) web page [formerly the National Climate Data Center (NCDC)].

More detailed tornado track information can be accessed using the National Weather Service Damage Assessment Toolkit for all tornadoes beginning in 2012. <https://apps.dat.noaa.gov/StormDamage/DamageViewer/>

***Any questions regarding this event review should be address to [w-lsx.webmaster@noaa.gov](mailto:w-lsx.webmaster@noaa.gov)***