

# Heavy Rain Event 11/26/01-11/29/01

*by  
Kent Kuyper, Senior Forecaster  
Donovan Landreneau, Forecaster  
& Lance Escudé, Senior Forecaster*

Heavy rains fell across southeast Texas and southern and central Louisiana from the 26<sup>th</sup> of November to the 29<sup>th</sup> of November. This rainfall event produced major flooding along the Calcasieu River from Glenmora to Old Town Bay and the West Fork of the Calcasieu River at Sam Houston Jones State Park. The first of many River Flood Warnings were issued on the morning of November 27<sup>th</sup>. A total of thirteen river points, plus Bundick Lake, went into flood during the event.

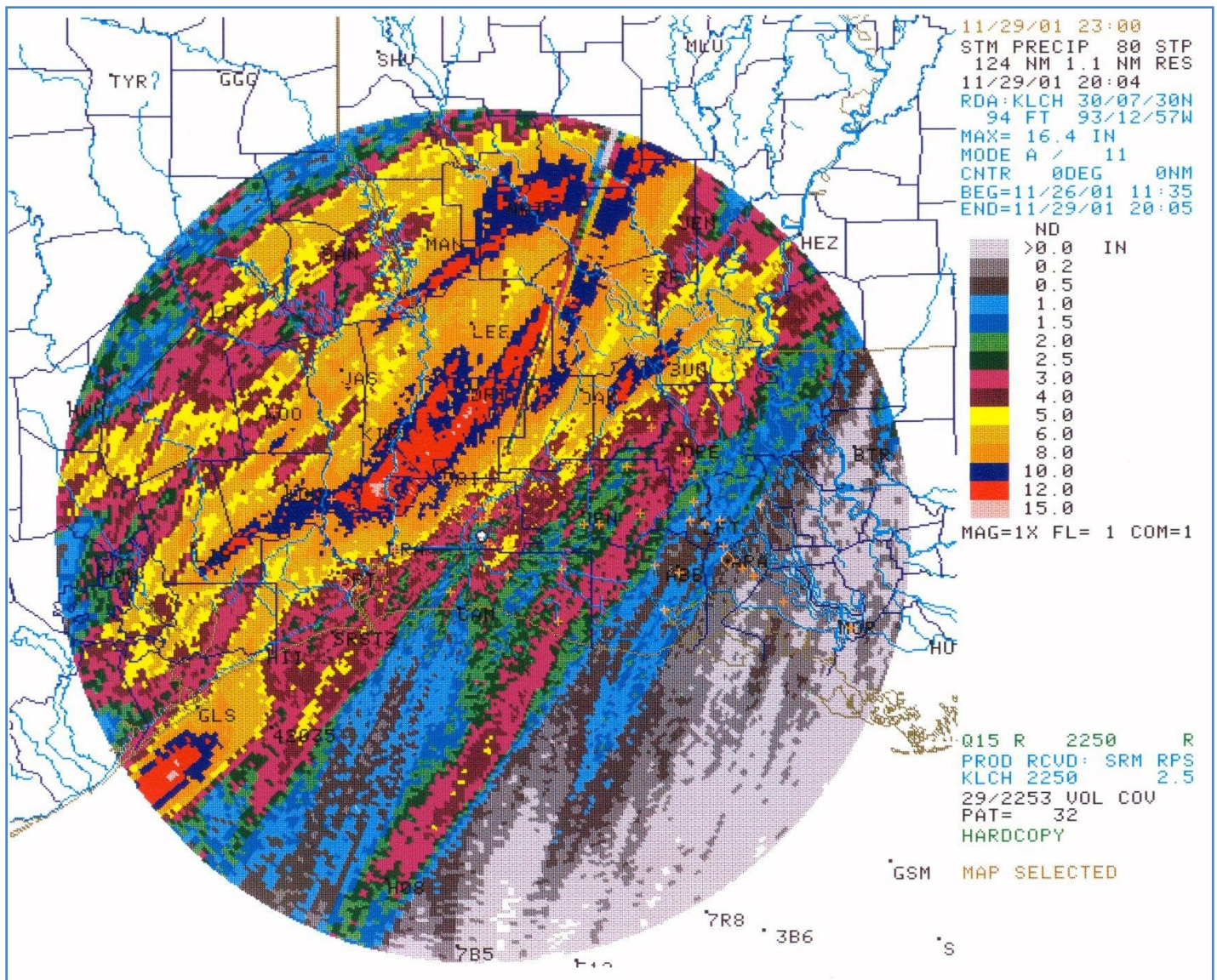
Rains started to fall late on the 26<sup>th</sup> of November across southeast Texas as a cold front approached from the north. This rain event was the first widespread heavy rainfall since Oct 13<sup>th</sup>. The front stalled across southeast Texas. As a result, southeast Texas and all of Louisiana remained in the warm sector through November 27<sup>th</sup>. The front moved into southwest Louisiana late on November 27<sup>th</sup> and extended from south of Alexandria, Louisiana to south of Beaumont, Texas.

The initial support that drove the front into southeast Texas lifted out to the northeast. Another upper level system moved across northern Mexico into south Texas early on November 27<sup>th</sup>. This upper level support resulted in showers spreading eastward from southeast Texas into southwest Louisiana.

Deep moisture originating from the gulf moved across southeast Texas and Louisiana from November 27<sup>th</sup> through the 29<sup>th</sup>. The front finally moved into eastern Louisiana during the afternoon hours of November 29<sup>th</sup>, ending the threat of additional rains.

Elevated thunderstorms produced large hail and high winds that blew trees down. The elevated thunderstorms developed in the cold pool of air, behind the cold front. During this period, nineteen Severe Thunderstorm Warnings and seven Tornado Warnings were issued.

Elevated thunderstorms training across southeast Texas into southwest Louisiana resulted in rainfall totals above twelve inches in a swath from southern Jasper and Newton counties in southeast Texas. These extreme rain totals extended into northwest Calcasieu, Beauregard, southern Vernon, and Rapides parishes.



11/29/2001 Storm Total Precipitation from Lake Charles, LA Radar

A Flood Watch was issued during the early morning hours of Tuesday November 27<sup>th</sup> and continued through the afternoon of the 29<sup>th</sup>. Numerous Flash Flood Warnings and Urban and Small Stream Advisories were issued during this period.

Many homes and camps were flooded along Houston River, the west Fork of the Calcasieu River, and the Calcasieu River near Old Town Bay. In addition, over fifty roads in Beauregard Parish and twenty-seven roads in Rapides Parish were closed at some point during this event. Road closures were also reported in Allen, Avoyelles, Calcasieu, and Vernon parishes. In Beauregard Parish, homes flooded along Bundick Lake. In southeast Texas several homes were flooded in the Vidor area of Orange County and Lumberton area of Hardin County. Roads were closed due to high water across southeast Texas.

Rainfall totals from gage sites varied from less than an inch in south central Louisiana to around fourteen inches in southwest Louisiana.

# Heavy Rain Event 11/26/01-11/29/01

The following table shows rainfall totals, in inches, around southeast Texas and south Louisiana.

<b>ASOS/CO-OP Sites:</b>	<b>11/26</b>	<b>11/27</b>	<b>11/28</b>	<b>11/29</b>	<b>11/30</b>	<b>Total</b>	<b>KLCH WSR-88D Storm Total (in.)</b>
Beaumont, TX	0.05	2.65	1.89	0.67	0.00	5.26	5 to 6
Esler Field, LA	0.13	3.88	2.92	1.90	0.00	8.83	6 to 8
Lafayette, LA	Trace	0.00	0.84	0.79	Trace	1.63	2 to 2.5
Lake Charles, LA	0.06	0.68	0.53	1.63	0.00	2.90	1 to 2
New Iberia, LA	Trace	0.00	0.86	0.70	0.00	1.56	0.5 to 1
Salt Point, LA	0.00	0.01	0.12	0.79	0.00	0.92	0.5 to 1
Alexandria 5 SSE, LA	0.00	2.04	2.00	2.35	0.95	7.34	6 to 8
Alexandria, LA	0.00	2.77	2.21	4.40	0.46	9.84	6 to 8
Beaumont City, TX	0.00	1.70	6.85	1.68	0.00	10.23	10 to 12
Beaumont Research, TX	0.00	0.87	2.88	1.81	0.02	5.58	5 to 6
Boyce 7 SW, LA	0.00	3.04	3.86	5.12	2.03	14.05	10 to 12
Breaux Bridge, LA	0.00	0.00	0.00	1.72	0.64	2.36	1 to 1.5
Crowley, LA	0.00	0.00	0.00	3.49	0.12	3.61	3 to 4
De Quincy, LA	0.00	0.13	8.24	3.07	0.56	12.00	12 to 15
De Ridder, LA	0.00	3.30	3.67	4.30	0.20	11.47	10 to 12
Hackberry 8 SSW, LA	0.00	0.85	0.11	0.95	0.29	2.20	1.5 to 2
Jeanerette, LA	0.00	0.00	0.00	0.29	0.17	0.46	0.2 to 0.5
Jennings, LA	0.00	0.05	0.05	2.81	0.00	2.91	2 to 2.5
Lake Arthur 10 SW, LA	0.37	0.02	0.01	2.74	0.41	3.55	2.5 to 3
Leesville, LA	0.00	2.24	2.64	3.47	0.05	8.40	6 to 8
LSU Dean Lee, LA	0.00	2.90	2.95	3.10	0.30	9.25	8 to 10
Lumberton, TX	0.00	0.70	7.50	2.38	0.02	10.60	10 to 12
Morgan City, LA	0.00	0.00	0.01	0.00	0.29	0.30	0.0 to 0.2
New Iberia, LA	0.00	0.01	0.00	0.78	0.13	0.92	0.2 to 0.5
Orange 9 N, TX	0.00	0.05	7.50	3.25	0.15	10.95	10 to 12
Rockefeller NWR, LA	0.00	0.04	0.01	4.05	0.00	4.10	3 to 4
Rosepine Research, LA	0.00	0.01	2.10	2.52	0.07	4.70	10 to 12
Wildwood, TX	0.00	4.48	1.55	2.34	0.03	8.40	6 to 8



*Flooding along the West Fork of the Calcasieu River*





*Flooding along the West Fork of the Calcasieu River*





*Flooding along the West Fork of the Calcasieu River*





*Flooding along the Calcasieu River near Old Town Bay*





*Flooding along the Calcasieu River near Old Town Bay*

