



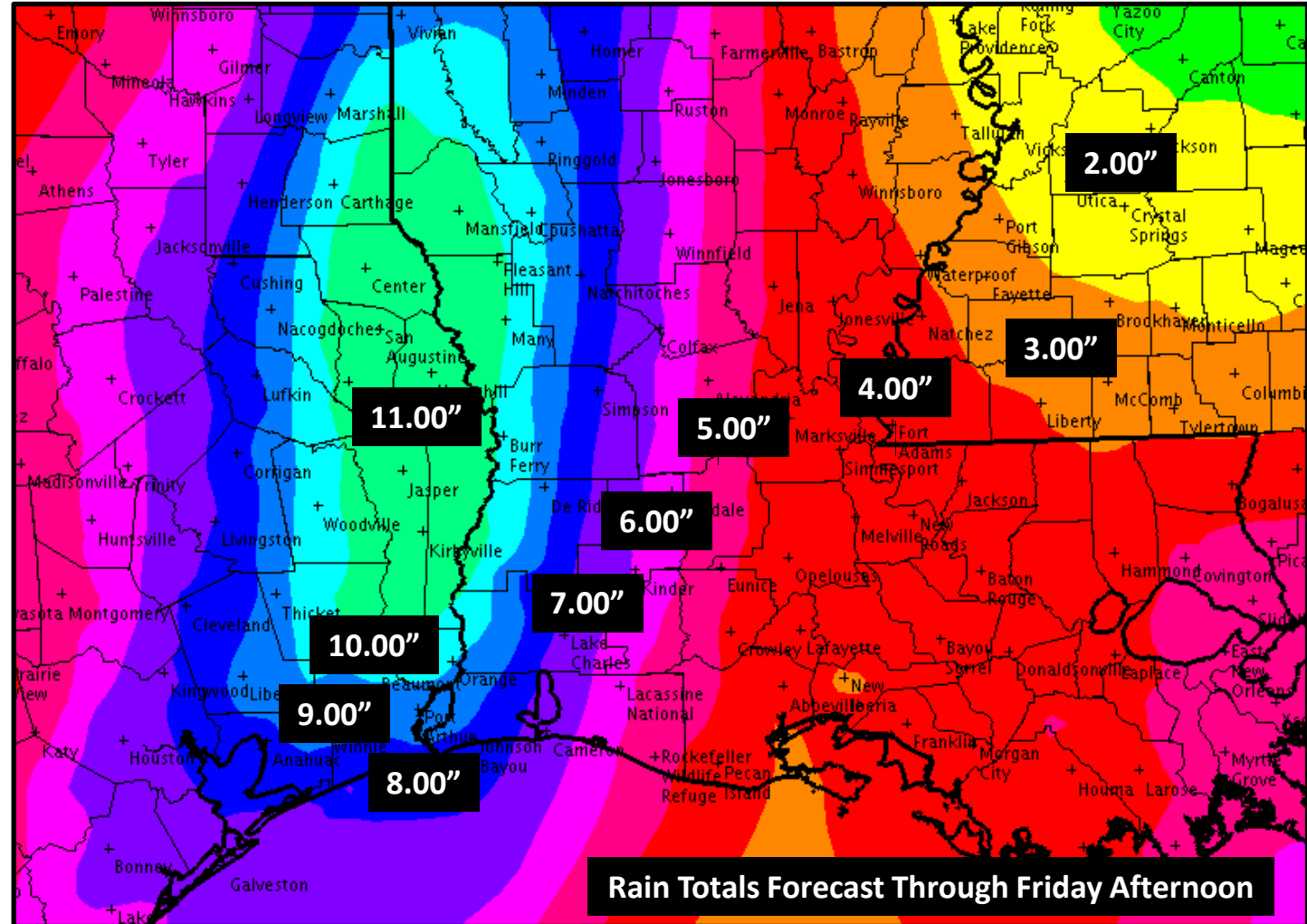
National Weather Service  
 Lake Charles, Louisiana  
 2:30 pm Tue Mar 8 2016

# Special Weather Update

By Roger Erickson, Warning Coordination Meteorologist

## TOP STORY:

A significant heavy rain/flooding event is expected over southeast Texas and western Louisiana, starting tonight and continuing through Thursday.



[weather.gov/lch](http://weather.gov/lch)



NWSLakeCharles



NWSLakeCharles



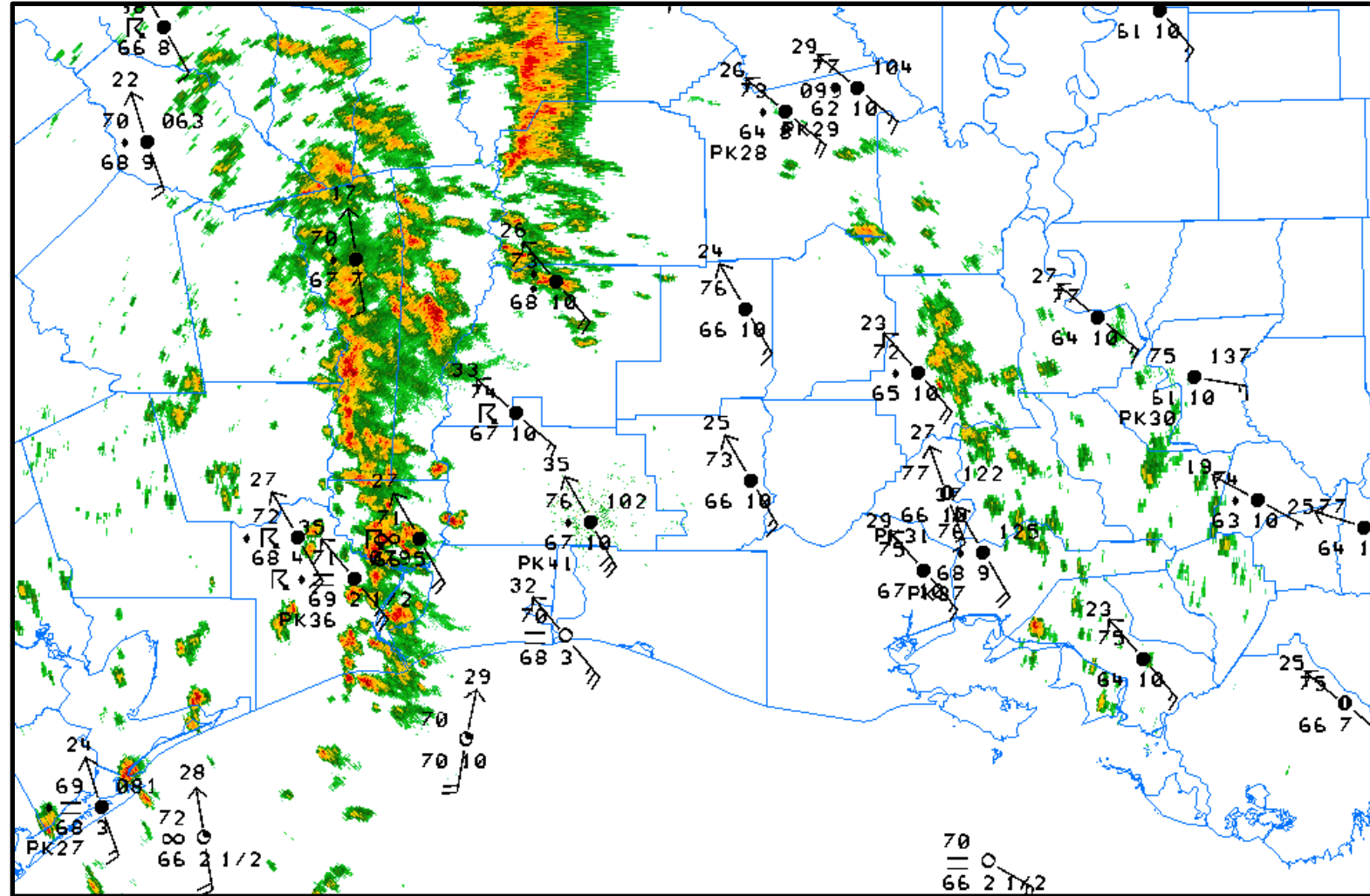
NWSLakeCharles

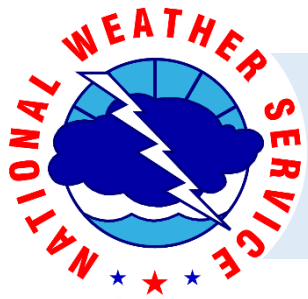


National Weather Service  
Lake Charles, Louisiana  
2:30 pm Tue Mar 8 2016

## 2 pm Weather Observations and Radar

Strong southeast winds of 20 to 25 mph with gusts over 30 mph were seen across the region. A strong line of showers and thunderstorms was over southeast Texas. A weaker line of showers was over the Atchafalaya Basin.





National Weather Service  
 Lake Charles, Louisiana  
 2:30 pm Tue Mar 8 2016

# Radar Estimate of Rain Totals So Far

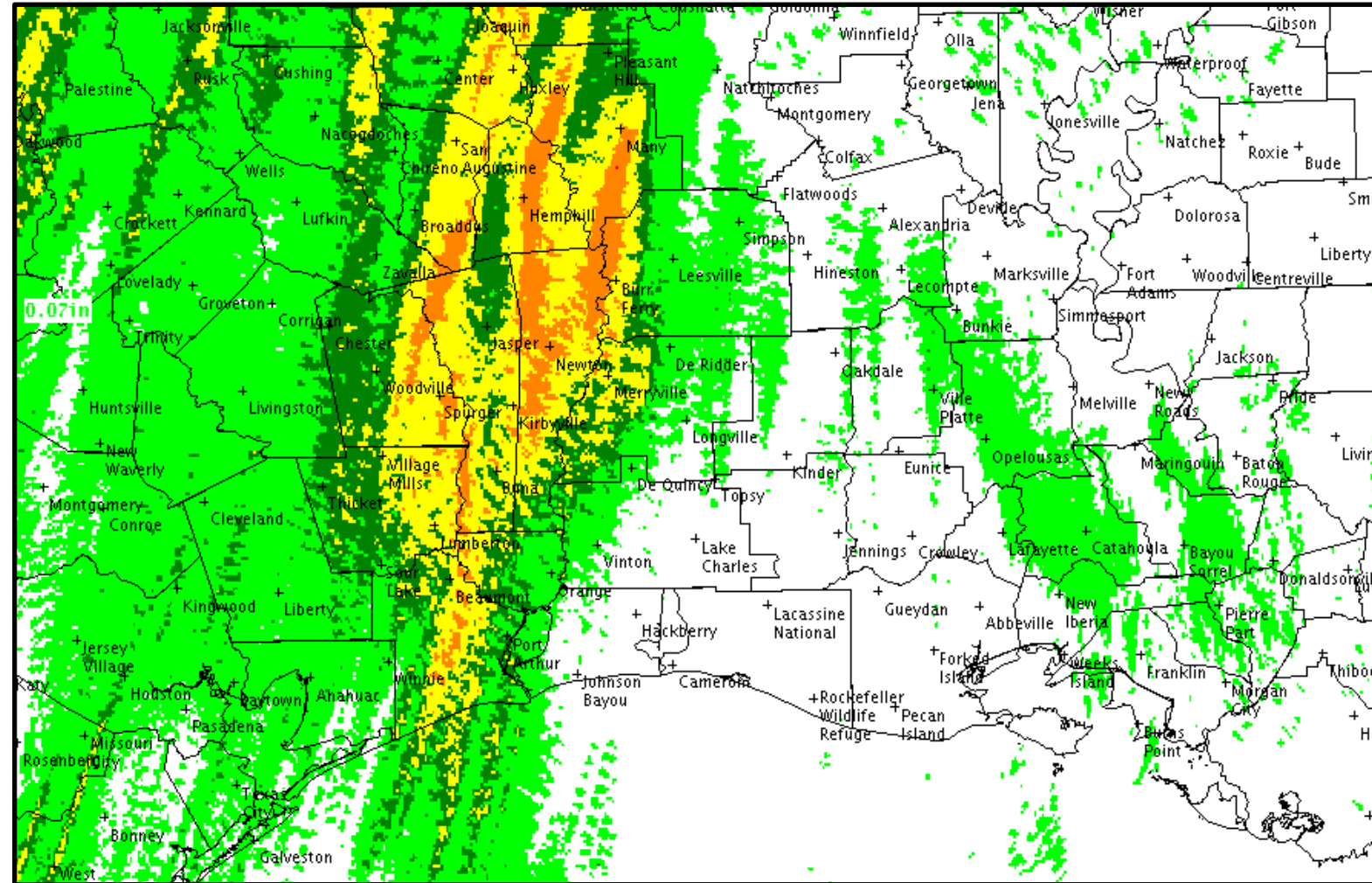
Most of southeast Texas has seen half an inch to one inch of rain so far today. Localized spots are over 1.5 inches.

Orange  $\geq 1.00''$

Yellow  $\geq 0.50''$

Dark green  $\geq 0.25''$

Light green  $\geq 0.01''$



[weather.gov/lch](http://weather.gov/lch)



NWSLakeCharles



NWSLakeCharles



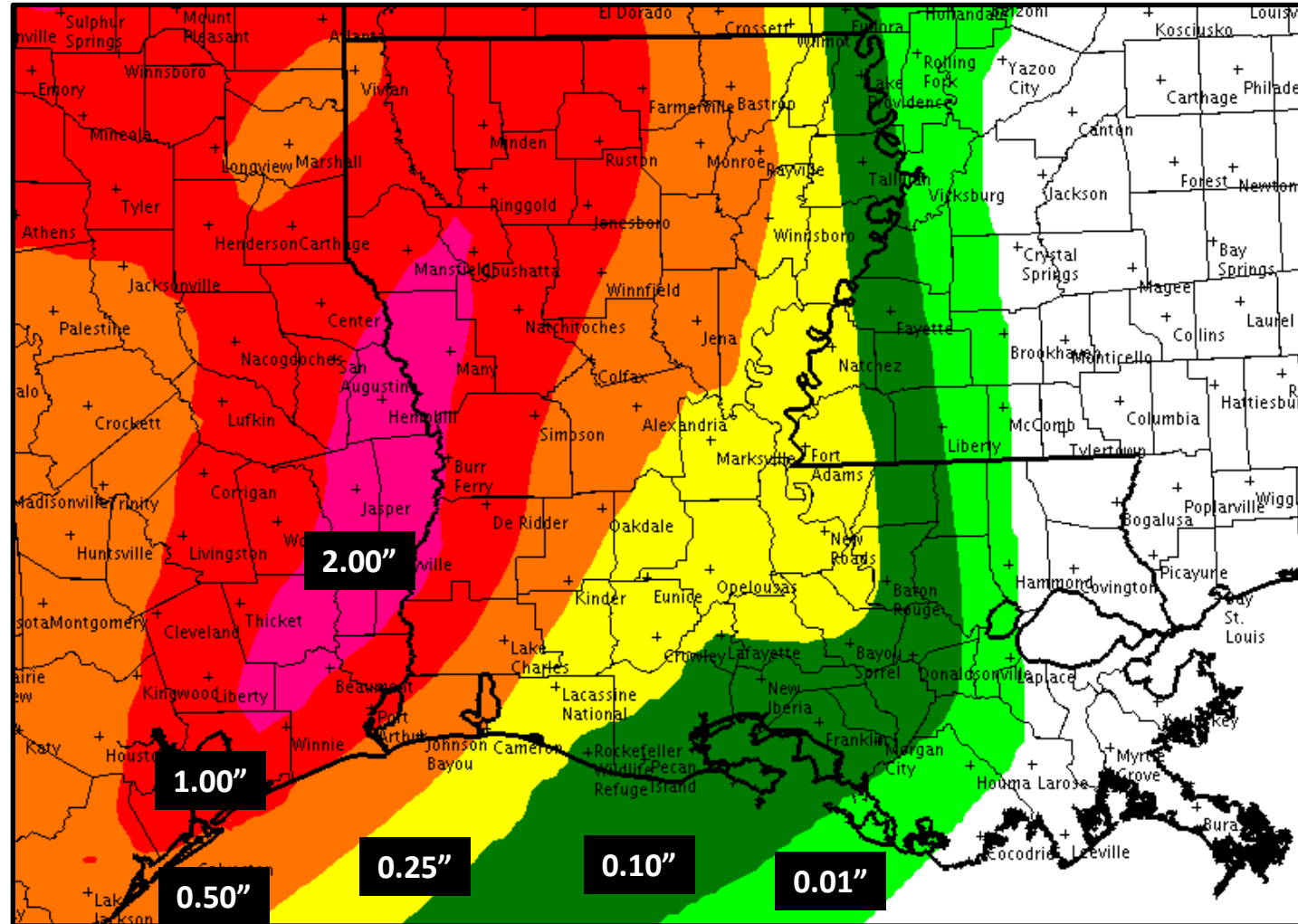
NWSLakeCharles



National Weather Service  
Lake Charles, Louisiana  
2:30 pm Tue Mar 8 2016

# Tuesday Rainfall Forecast

Through midnight tonight, we are expecting one to two inches of rain across southeast Texas, one half to one inch in southwest and central Louisiana, and less than a quarter inch of rain in south central Louisiana.



[weather.gov/lch](http://weather.gov/lch)



NWSLakeCharles

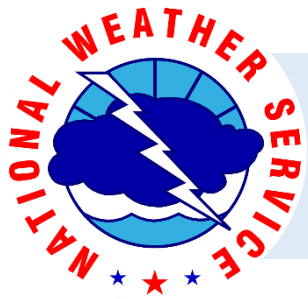


NWSLakeCharles



NWSLakeCharles

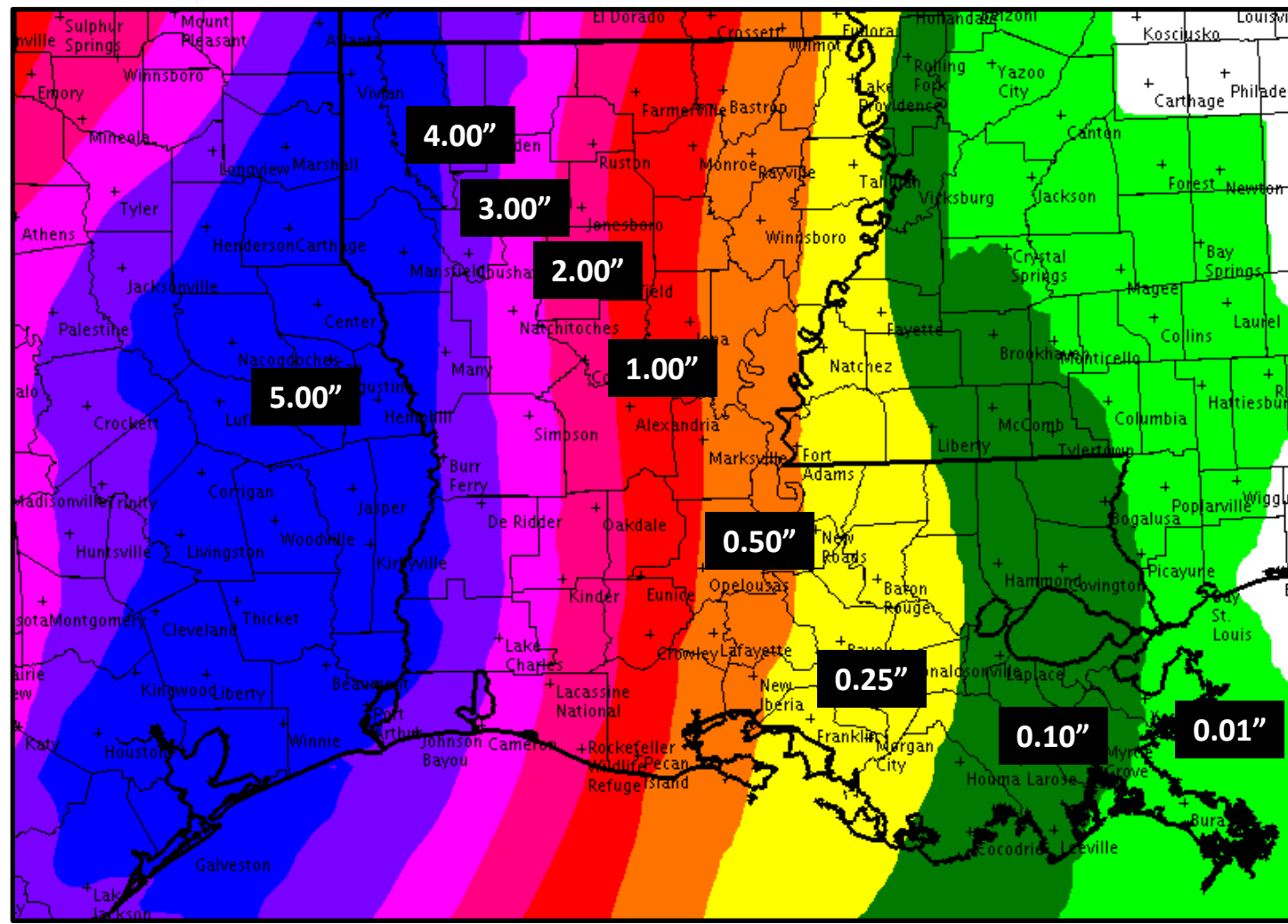




National Weather Service  
 Lake Charles, Louisiana  
 2:30 pm Tue Mar 8 2016

# Wednesday Rainfall Forecast

Wednesday will bring rain continuing in the morning hours, but likely getting heavier in the afternoon and evening. Over 5 inches of rain is expected in southeast Texas, 1-3 inches in central and SW LA, and 0.25 to 1 inch in south central LA.



[weather.gov/lch](http://weather.gov/lch)



NWSLakeCharles



NWSLakeCharles



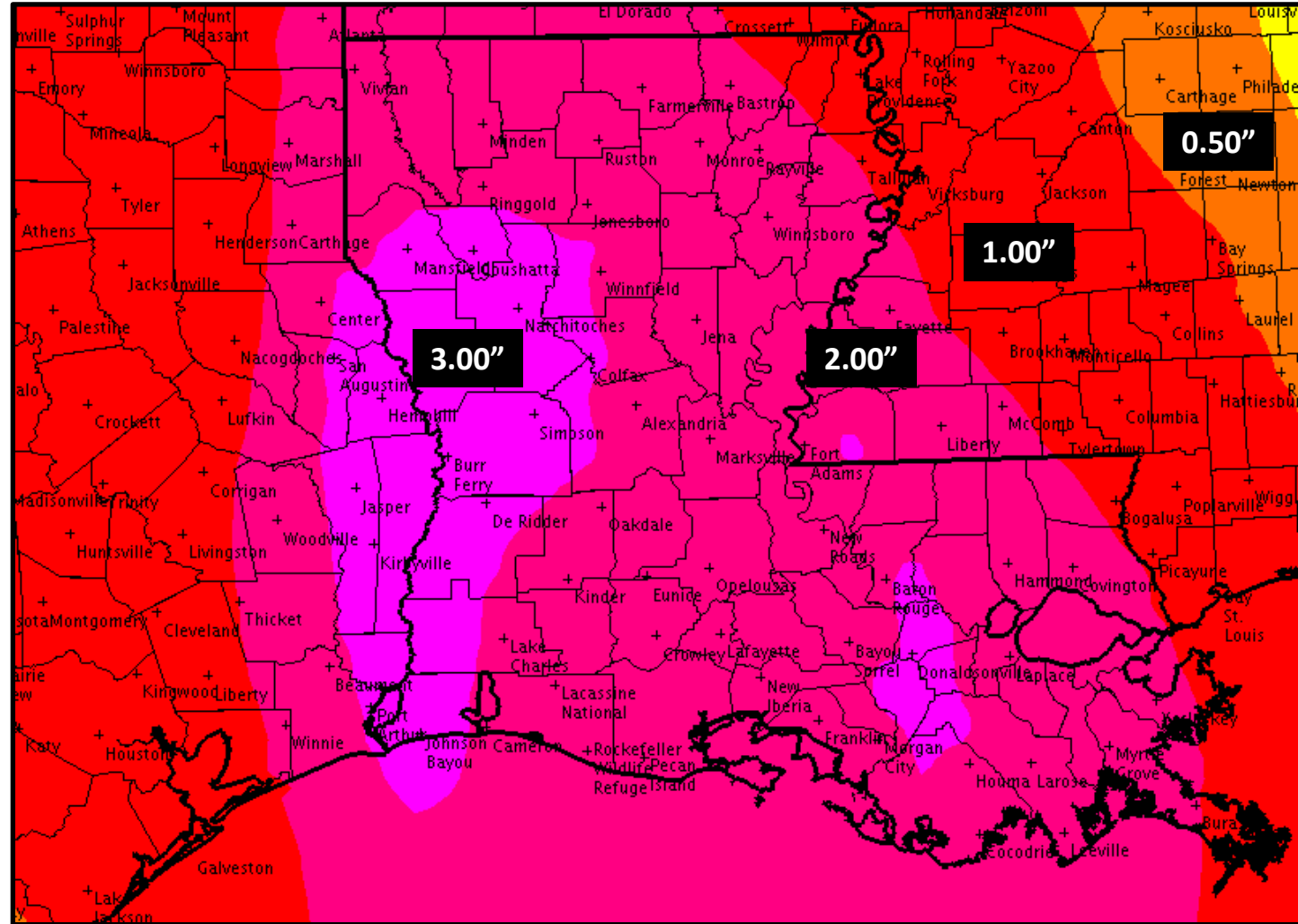
NWSLakeCharles

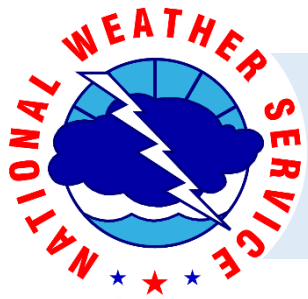


National Weather Service  
Lake Charles, Louisiana  
2:30 pm Tue Mar 8 2016

# Thursday Rainfall Forecast

Thursday will see most of the rain in the morning, with 2-3 inches expected across most of the area.

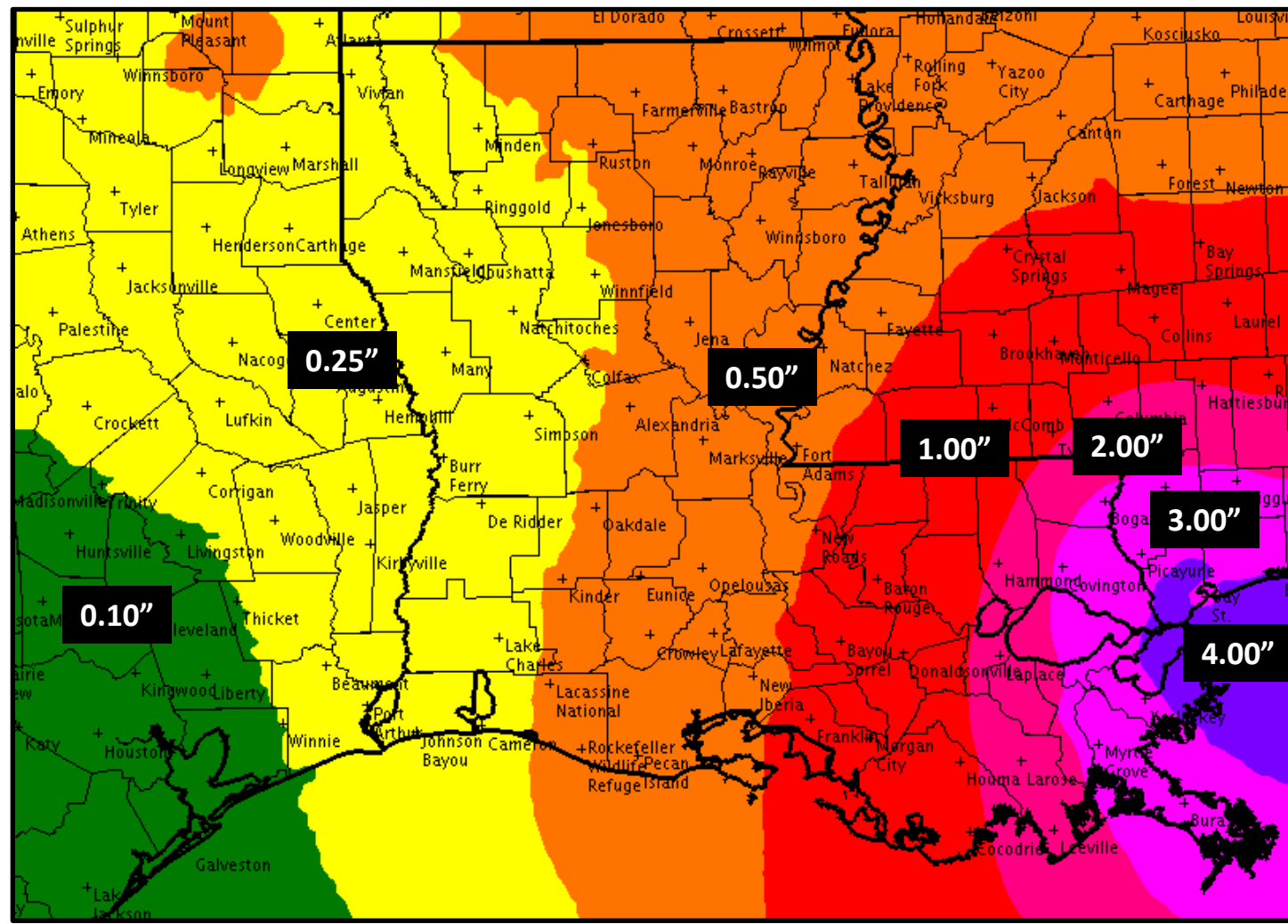




National Weather Service  
 Lake Charles, Louisiana  
 2:30 pm Tue Mar 8 2016

# Friday Rainfall Forecast

Rain will be tapering off Friday, with a quarter of an inch expected in southeast Texas and western Louisiana, and half an inch in central and south central Louisiana.



[weather.gov/lch](http://weather.gov/lch)



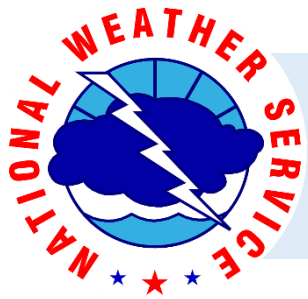
NWSLakeCharles



NWSLakeCharles



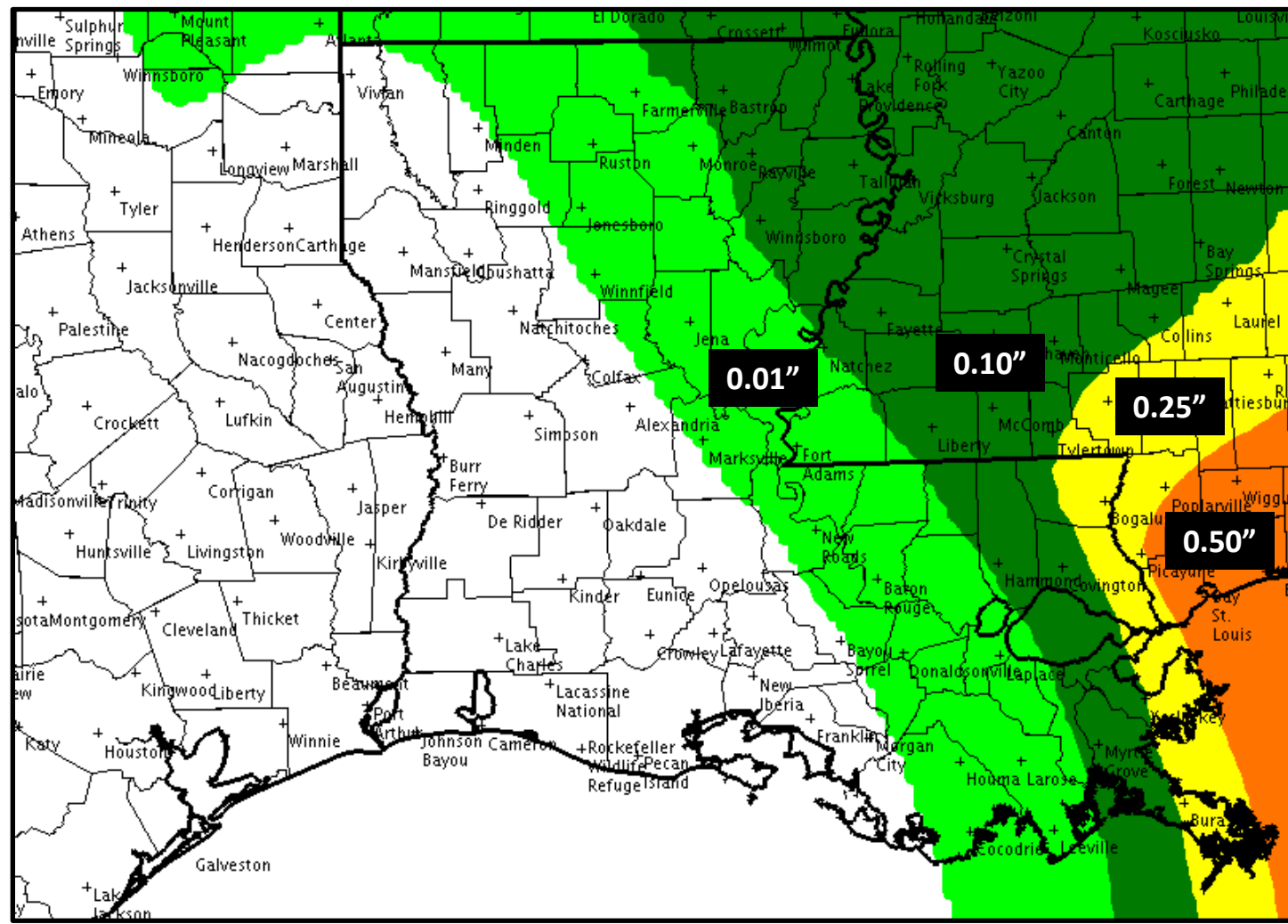
NWSLakeCharles



National Weather Service  
 Lake Charles, Louisiana  
 2:30 pm Tue Mar 8 2016

# Saturday Rainfall Forecast

Most of the rain will be out of the region by Saturday, with parts of the Atchafalaya Basin seeing less than a tenth of an inch of rain.



[weather.gov/lch](http://weather.gov/lch)



NWSLakeCharles

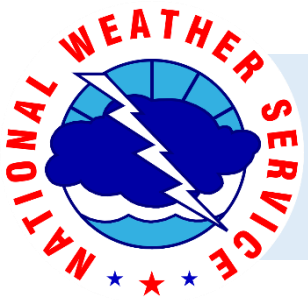


NWSLakeCharles



NWSLakeCharles

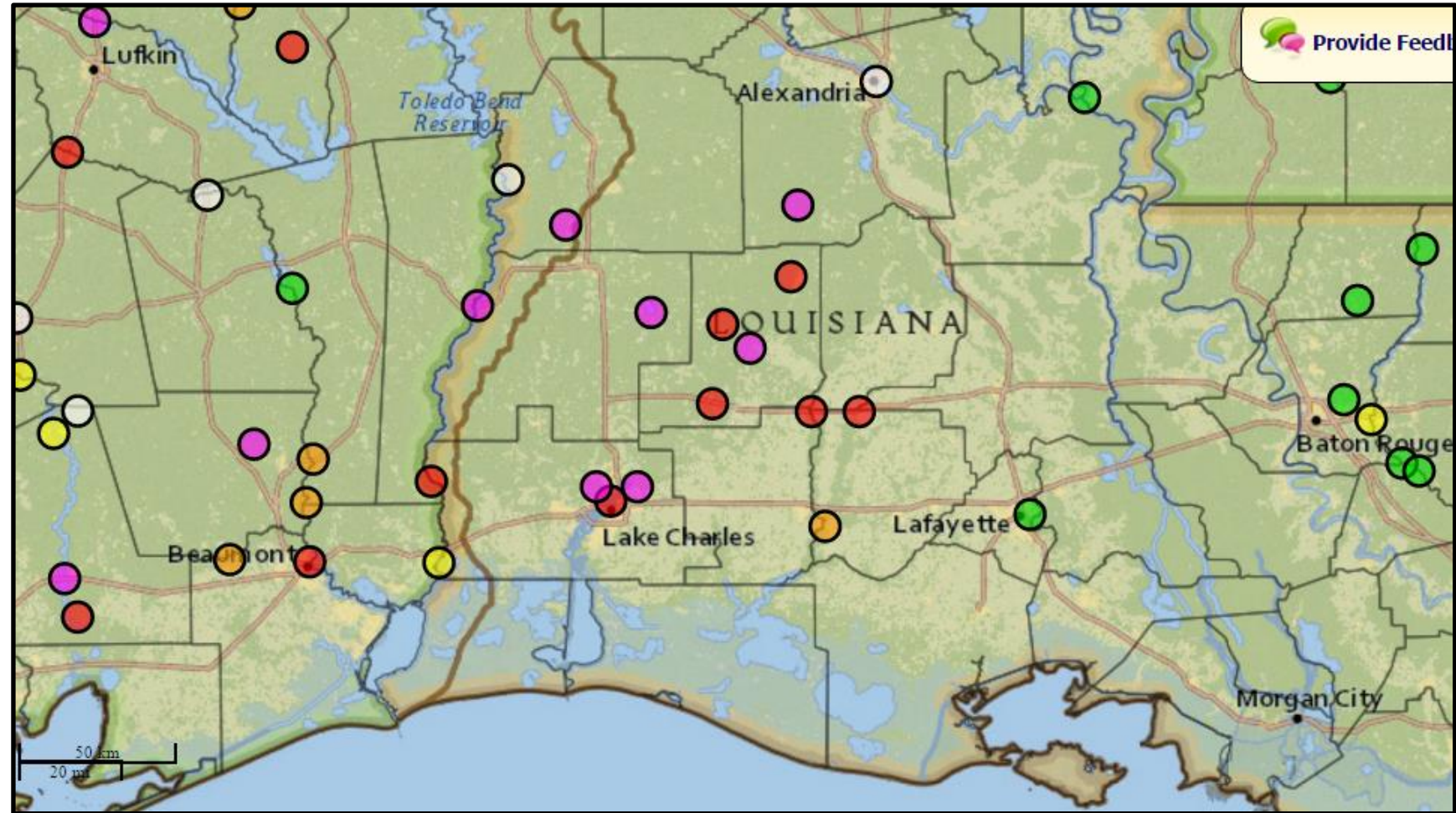


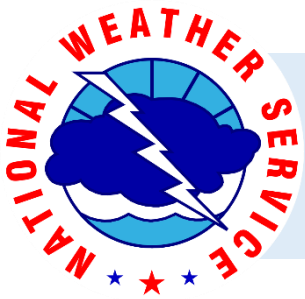


National Weather Service  
Lake Charles, Louisiana  
2:30 pm Tue Mar 8 2016

# Worse Case Scenario River Forecast

Pink indicates a major flood, red is moderate, and orange is minor flood.

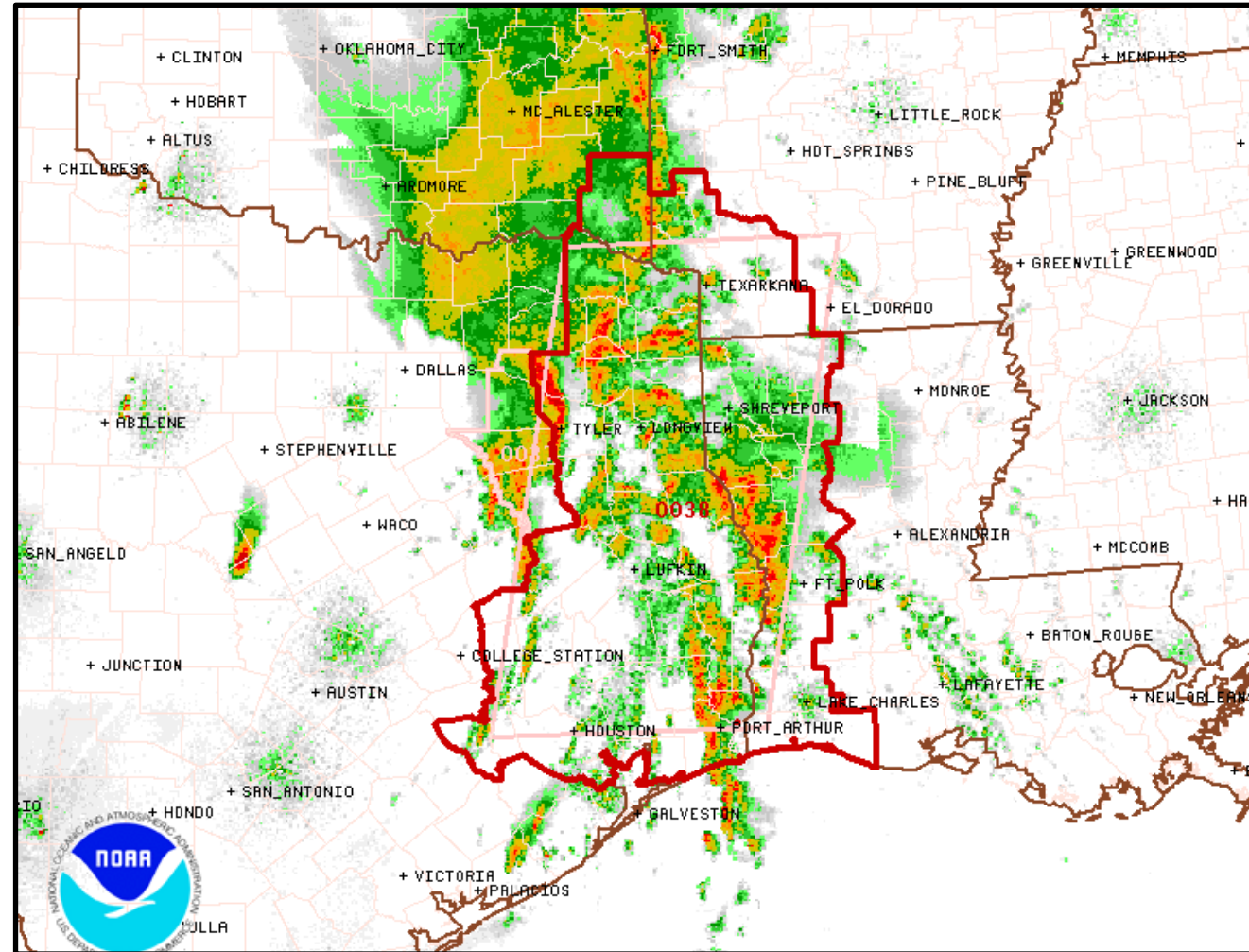




National Weather Service  
Lake Charles, Louisiana  
2:30 pm Tue Mar 8 2016

# Severe Weather Threat Today

A tornado watch is in effect for southeast Texas and western Louisiana until 6 pm. Additional watches may be required later this afternoon or evening.



[weather.gov/lch](http://weather.gov/lch)



NWSLakeCharles

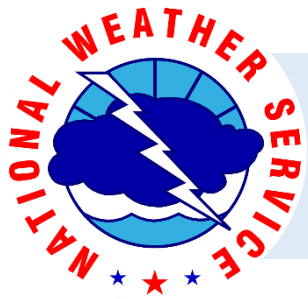


NWSLakeCharles



NWSLakeCharles

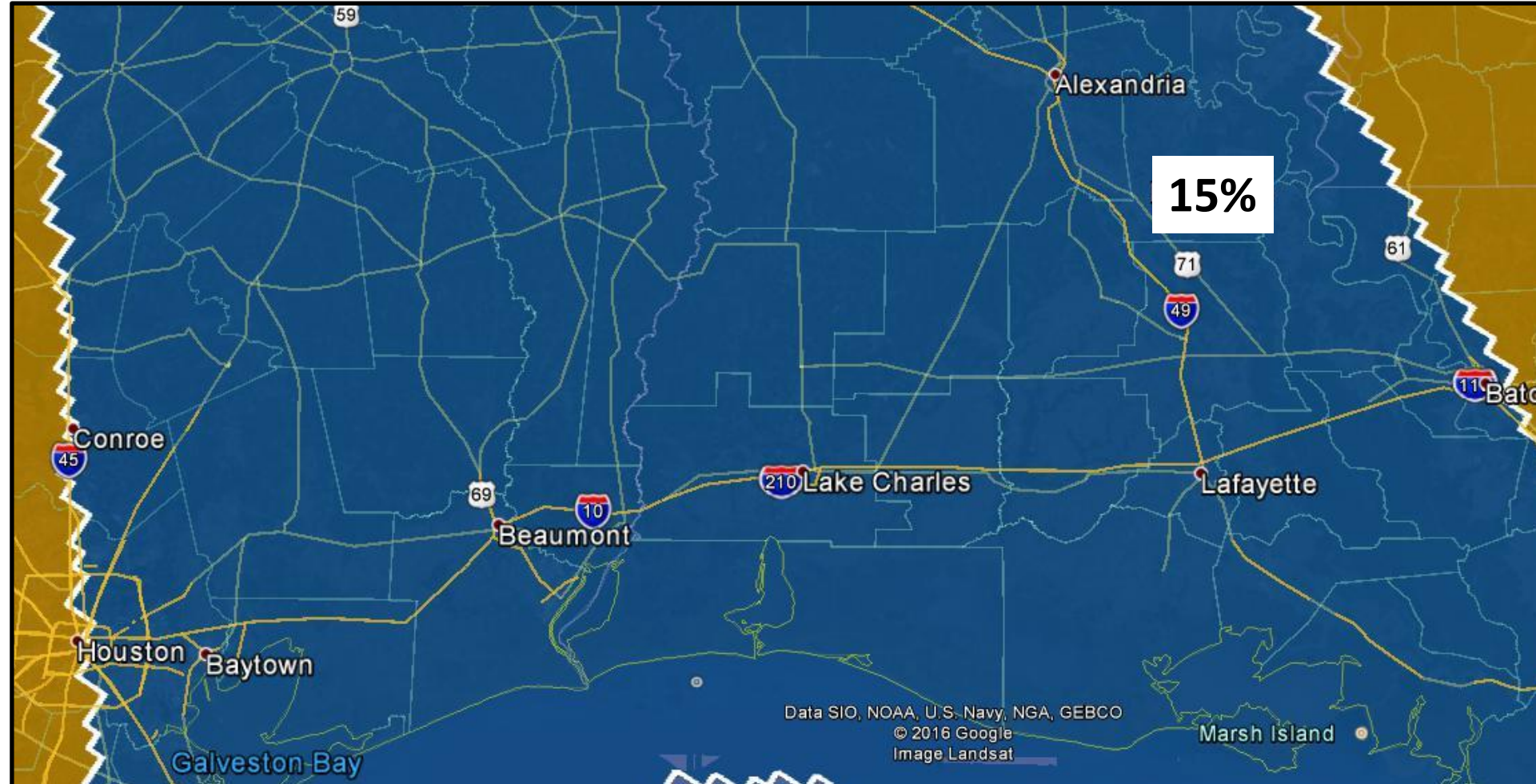




National Weather Service  
Lake Charles, Louisiana  
2:30 pm Tue Mar 8 2016

# Severe Weather Threat Wednesday

There is a small chance for severe storms Wednesday, with the morning and afternoon hours having the higher threat.



[weather.gov/lch](http://weather.gov/lch)



NWSLakeCharles



NWSLakeCharles

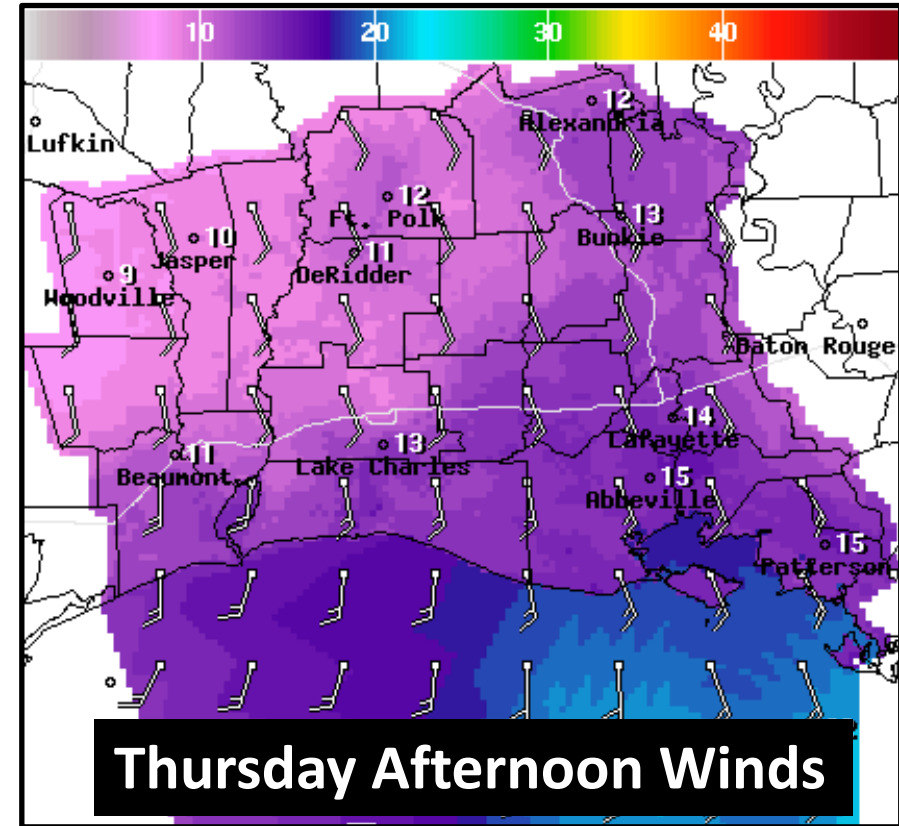
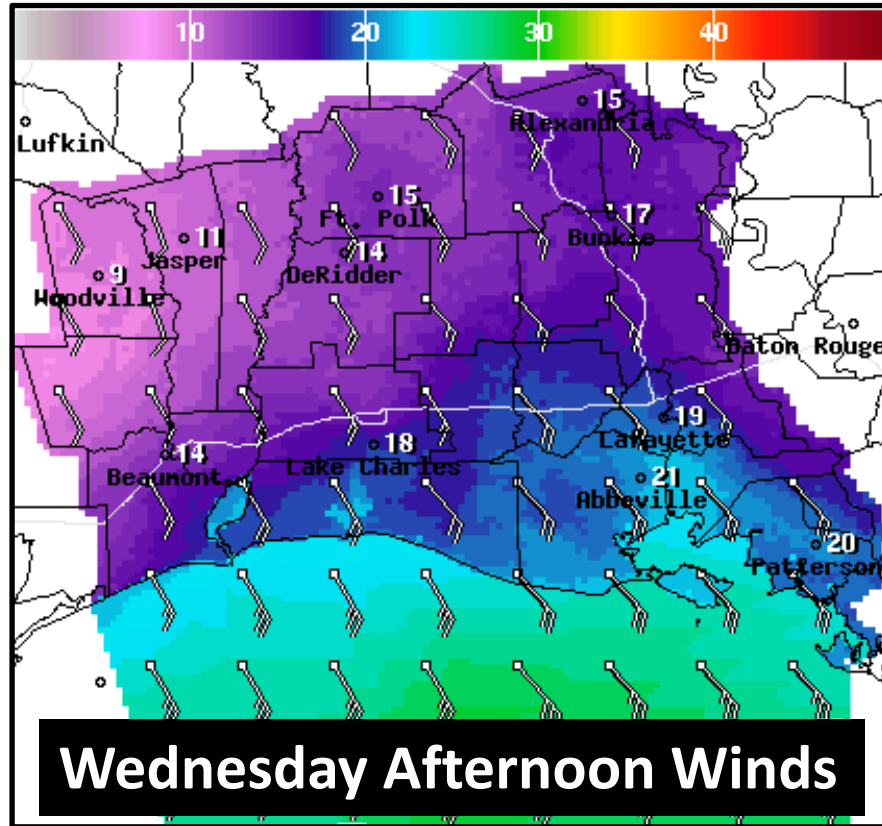


NWSLakeCharles



National Weather Service  
Lake Charles, Louisiana  
2:30 pm Tue Mar 8 2016

# Wind Forecast Wednesday and Thursday



Strong southeast winds of 15 to 25 mph today will continue tonight into tomorrow. Winds decrease on Thursday to the 15 to 20 mph range.



[weather.gov/lch](http://weather.gov/lch)



NWSLakeCharles



NWSLakeCharles

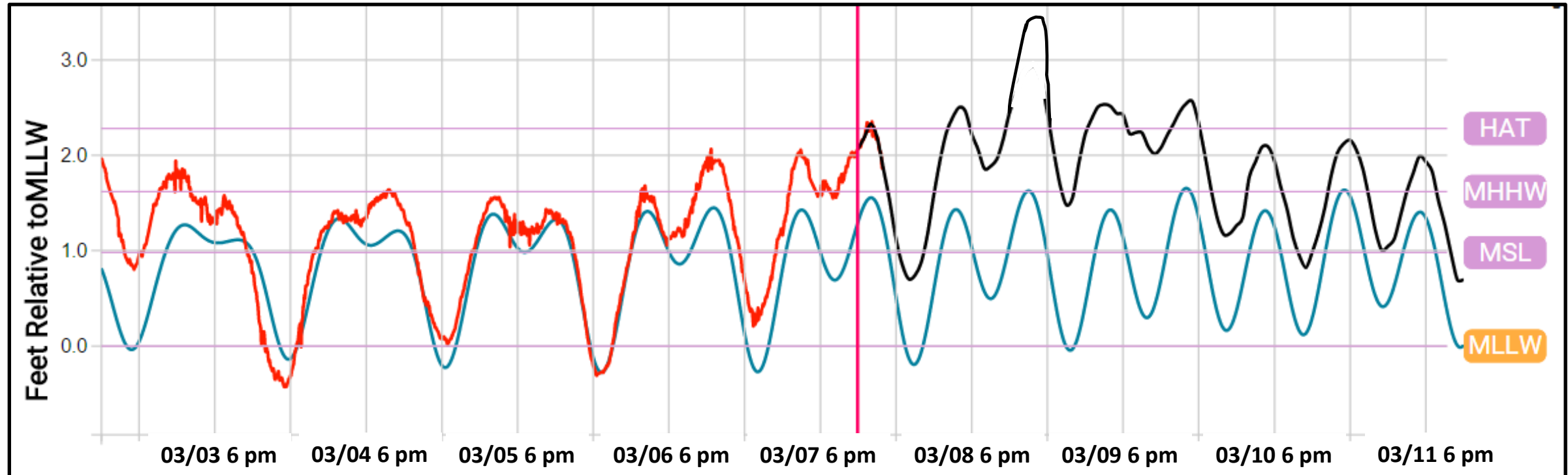


NWSLakeCharles



National Weather Service  
Lake Charles, Louisiana  
2:30 pm Tue Mar 8 2016

# Sabine Pass Tides



Tides will peak between 3.5 and 4 ft during high tides Wednesday. Parts of Sabine Pass could see water over the ground, and parts of Highway 87 between Port Arthur and Sabine Pass will have water on it during high tides.



[weather.gov/lch](http://weather.gov/lch)



NWSLakeCharles



NWSLakeCharles



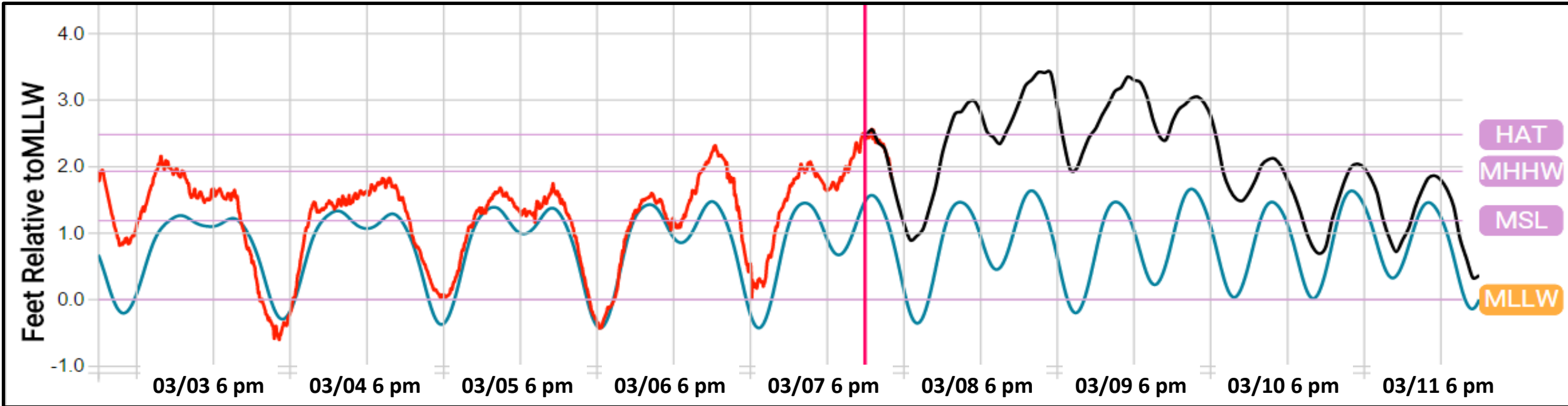
NWSLakeCharles





National Weather Service  
Lake Charles, Louisiana  
2:30 pm Tue Mar 8 2016

# Calcasieu Pass Tides



Tides will reach to 3.5 to 4 ft during high tides on Wednesday and Thursday. Parts of Main Street in downtown Cameron will flood and portions of Highway 82 between Holly Beach and Cameron will have water over it. Low-lying areas near the beaches of Johnson Bayou and Rutherford Beach will be susceptible to flooding during high tides.



[weather.gov/lch](http://weather.gov/lch)



NWSLakeCharles



NWSLakeCharles

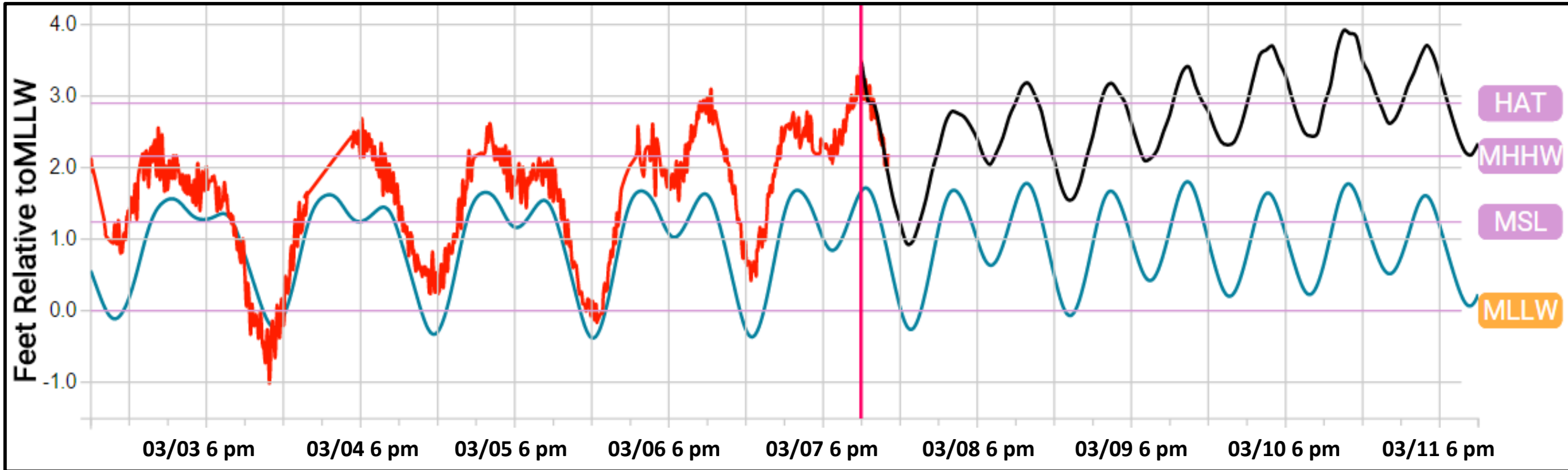


NWSLakeCharles



National Weather Service  
Lake Charles, Louisiana  
2:30 pm Tue Mar 8 2016

# Freshwater Canal Tides



Tides will approach 4 ft during high tide on Thursday and Friday. Parts of Intracoastal City and surrounding areas will have water over roads during high tide on these days.



[weather.gov/lch](http://weather.gov/lch)



NWSLakeCharles



NWSLakeCharles

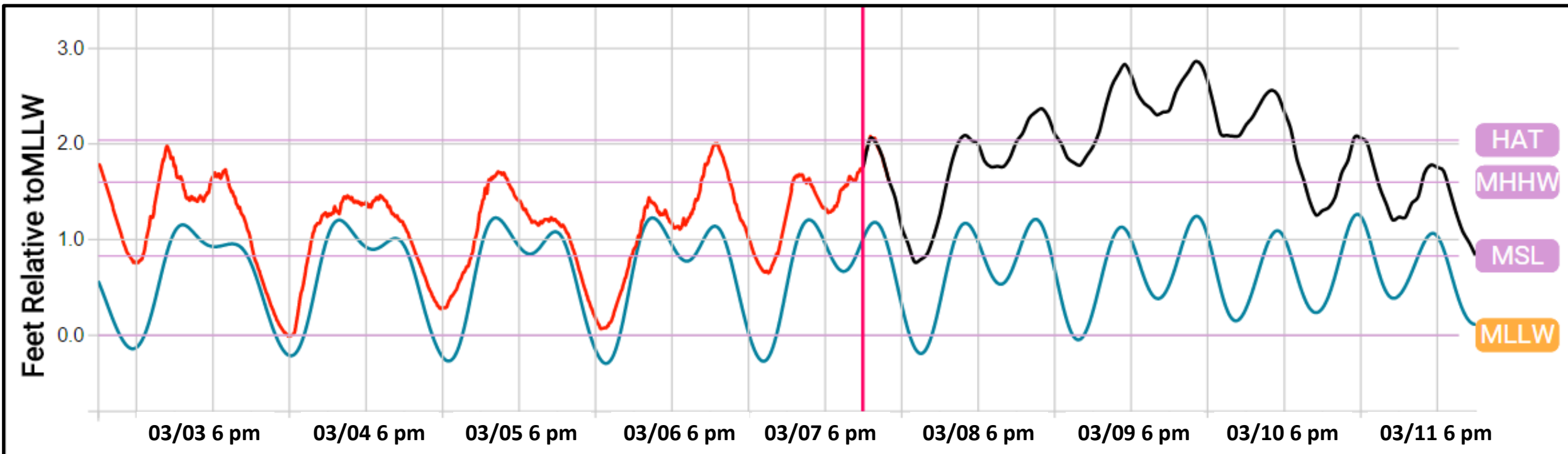


NWSLakeCharles



National Weather Service  
Lake Charles, Louisiana  
2:30 pm Tue Mar 8 2016

# Amerada Pass Tides



Tides in St. Mary Parish could peak out close to 3.0 ft during high tides on Wednesday and Thursday. Minor coastal flooding near Cypremort Point and Burns Point is expected.



[weather.gov/lch](http://weather.gov/lch)



NWSLakeCharles



NWSLakeCharles



NWSLakeCharles



National Weather Service  
Lake Charles, Louisiana  
2:30 pm Tue Mar 8 2016

# Weather Summary

- A flash flood watch is in effect for southeast Texas and southwest and central Louisiana. It could be expanded east if conditions warrant.
- Heavy rains are expected tonight through Thursday across the forecast area. Rain totals of 4 to 11 inches is expected. The highest rain totals will be in southeast Texas, and the lower amounts in south central Louisiana.
- There is potential for area rivers to flood later this week and weekend, and they could reach moderate to major flood levels, depending on the exact location of the heaviest rains.



[weather.gov/lch](http://weather.gov/lch)



NWSLakeCharles



NWSLakeCharles



NWSLakeCharles



National Weather Service  
Lake Charles, Louisiana  
2:30 pm Tue Mar 8 2016

# Weather Summary

- Strong southeast winds of 20 to 25 mph, with gusts of 30 to 40 mph, are expected today through Wednesday afternoon. A wind advisory is in effect for the entire region today and may be expanded into tonight and tomorrow.
- A tornado watch is in effect for southeast Texas and western Louisiana until 6 pm this evening. Additional watches may be issued later today. The threat for severe weather will extend into Wednesday. Damaging winds and tornadoes will be possible.
- Due to the strong onshore flow, tides will run above normal this week. A coastal flood warning is in effect. Expect minor coastal flooding during times of high tides tonight through Thursday.



[weather.gov/lch](http://weather.gov/lch)



NWSLakeCharles



NWSLakeCharles



NWSLakeCharles