



Drought Information Statement for Southeast TX and Southwest LA

Valid May 7, 2026

Issued By: WFO Lake Charles, LA

Contact Information:

- This product will be updated May 22nd, 2026 or sooner if drought conditions change significantly.
 - Please see all currently available products at <https://drought.gov/drought-information-statements>.
 - Please visit <https://www.weather.gov/LCH/DroughtInformationStatement> for previous statements.
 - Please visit <https://www.drought.gov/drought-status-updates/> for regional drought status updates.
-
- Good Improvement In Drought Conditions Across the Region. This Does Not Include Rainfall Since Tuesday Morning.



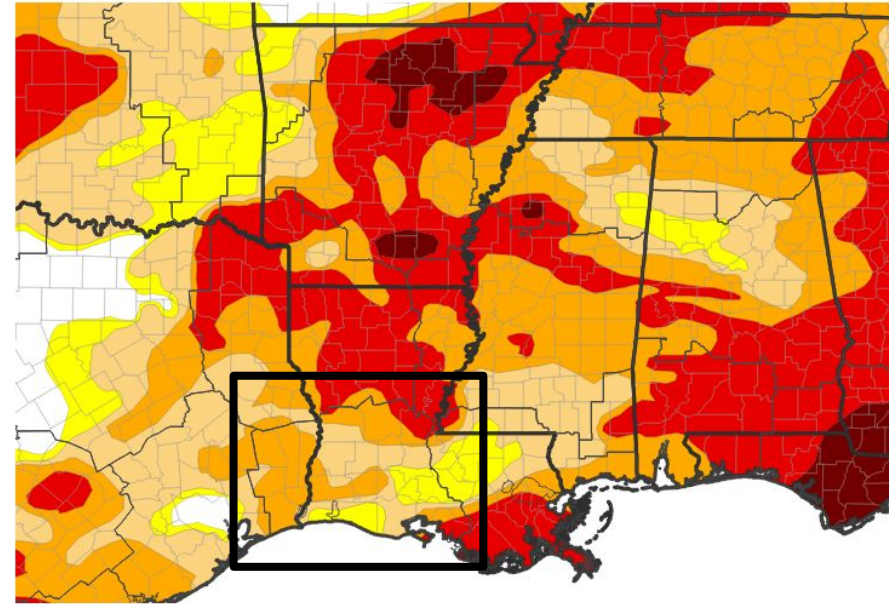


U.S. Drought Monitor

Link to the [latest U.S. Drought Monitor](#)

- Drought Intensity and Extent
 - **D3 (Extreme Drought)**: Avoyelles and St. Mary Parishes.
 - **D2 (Severe Drought)**: Calcasieu, Rapides, Jefferson Davis Parishes and all of Southeast Texas Counties.
 - **D1 (Moderate Drought)**: Beauregard, Allen, Evangeline, St. Landry and Vermilion Parishes.
 - **D0: (Abnormally Dry)**: Cameron, Lafayette and St. Martin Parishes.

U.S. Drought Monitor



U.S. Drought Monitor



Source(s): NDMC, NOAA, USDA, NASA; image courtesy of Drought.gov

Data Valid: 05/05/26



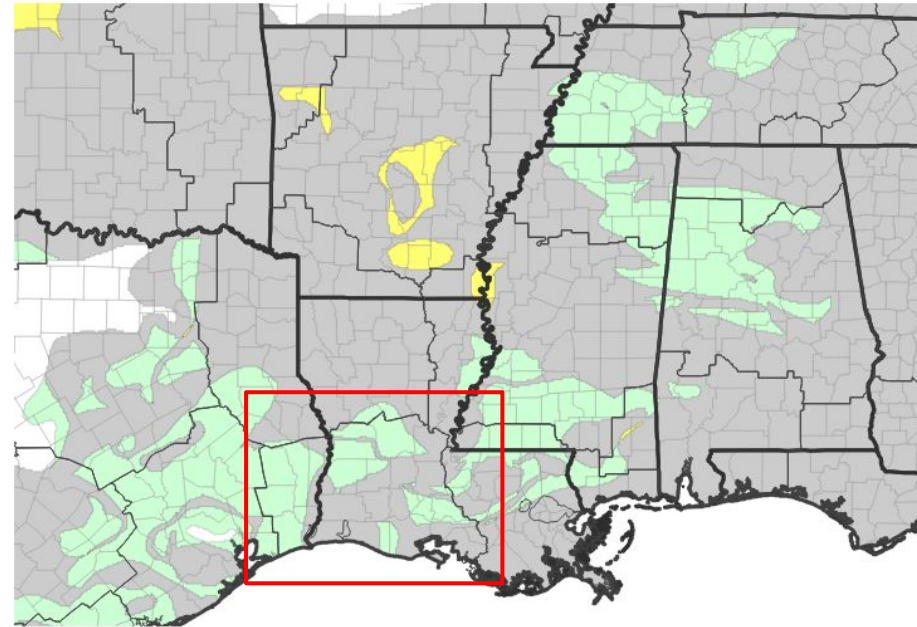


Recent Change in Drought Intensity

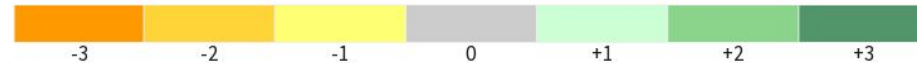
Link to the latest [1-week change map](#)

- One Week Drought Monitor Class Change.
 - Drought Worsened: none.
 - No Change: Mainly across Southwest Louisiana.
 - Drought Improved: Over much of East Texas, West Central and South Central Louisiana.

U.S. Drought Monitor 1-Week Change Map



Drought Change Since Last Week



Source(s): NDMC, NOAA, USDA, NASA; image courtesy of Drought.gov

Data Valid: 05/05/26



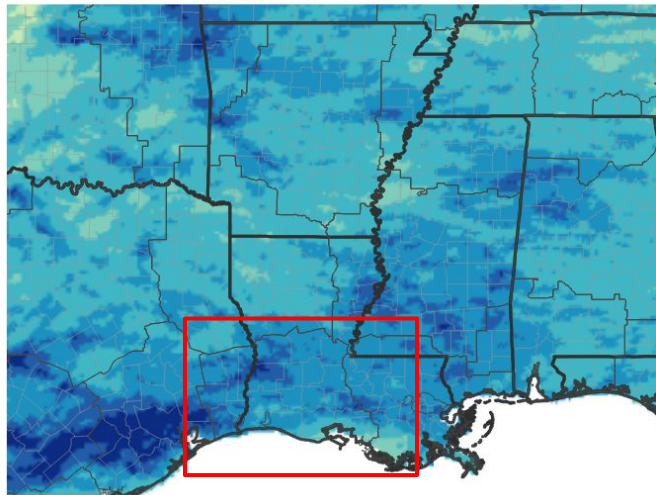


Precipitation

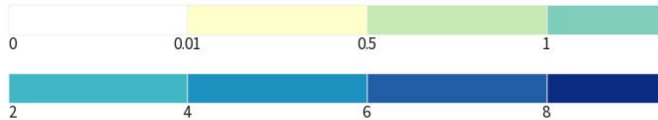
For the past 30 days

- Rainfall over the past 30 days is running near normal across most of the area with above normal rainfall noted across portions of Southeast Texas and drier than normal across South Central Louisiana.

NWPS 30-Day Precipitation Accumulations (inches)

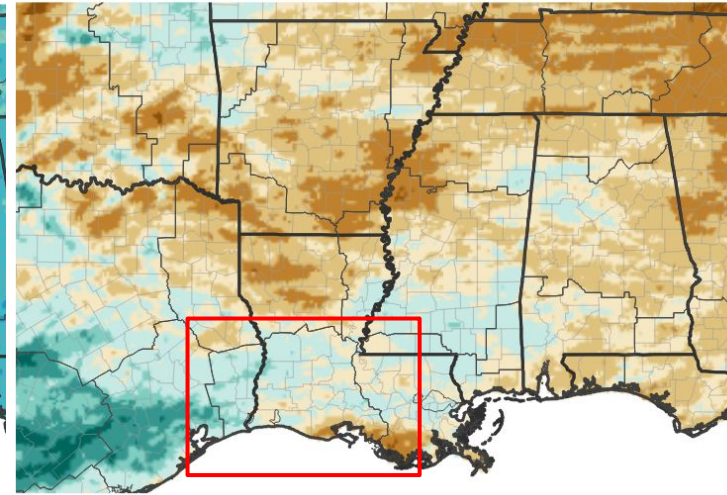


Inches of Precipitation

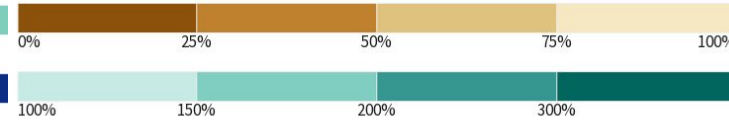


Source(s): National Weather Service National Water Prediction Service; image courtesy of Drought.gov

30-Day Precipitation: Percent of PRISM Normal



Precipitation Shown as a Percentage of Normal Conditions



Data Valid: Source(s): National Weather Service National Water Prediction Service; image courtesy of Drought.gov Data Valid: 05/06/26



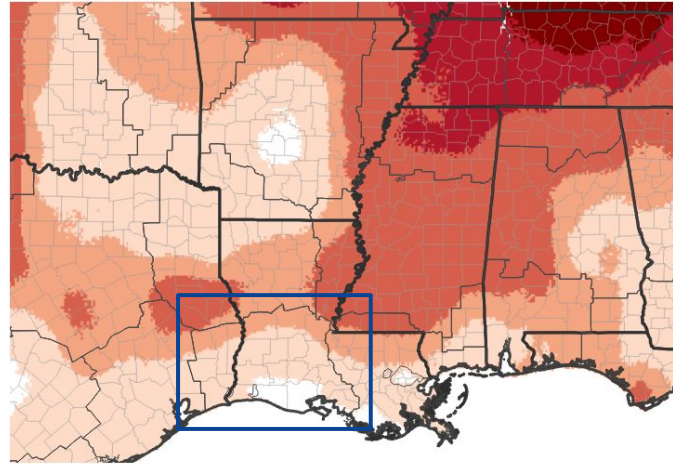


Temperature

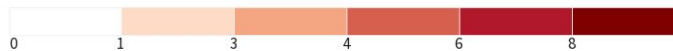
Link to [Southern Regional Climate Center](#)

- Temperatures have been above normal area wide across the region the past week.
- Above normal temperatures have been noted the previous 30 days.

7-Day Temperature Anomaly



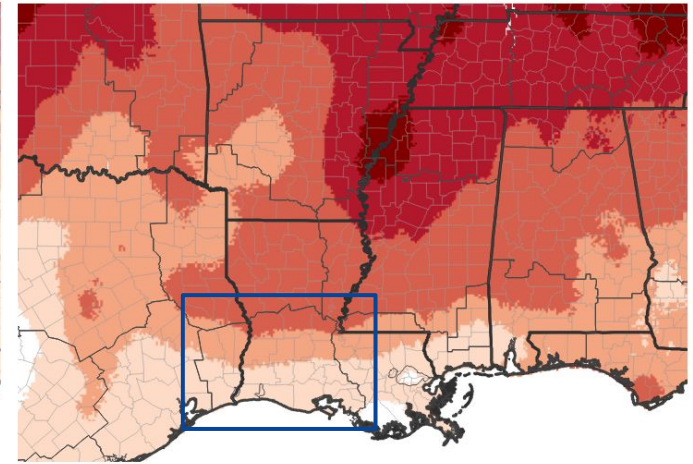
Departure from Normal Max Temperature (°F)



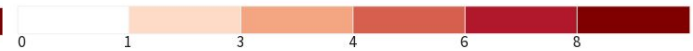
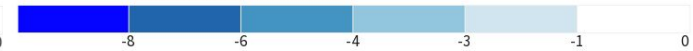
Source(s): NOAA's National Centers for Environmental Information; image courtesy of Drought.gov

Data Valid: 04/29/26

30-Day Temperature Anomaly



Departure from Normal Max Temperature (°F)



Source(s): NOAA's National Centers for Environmental Information; image courtesy of Drought.gov

Data Valid: 04/29/26





Summary of Impacts

Links: See/submit [Condition Monitoring Observer Reports \(CMOR\)](#) and view the [Drought Impacts Reporter](#)

Hydrologic Impacts

- USGS data unavailable for assessment

Agricultural Impacts

- None noted.

Fire Hazard Impacts

- None noted.

Other Impacts

- There are no known impacts at this time.

Mitigation Actions

- Please refer to your municipality and/or water provider for mitigation information.

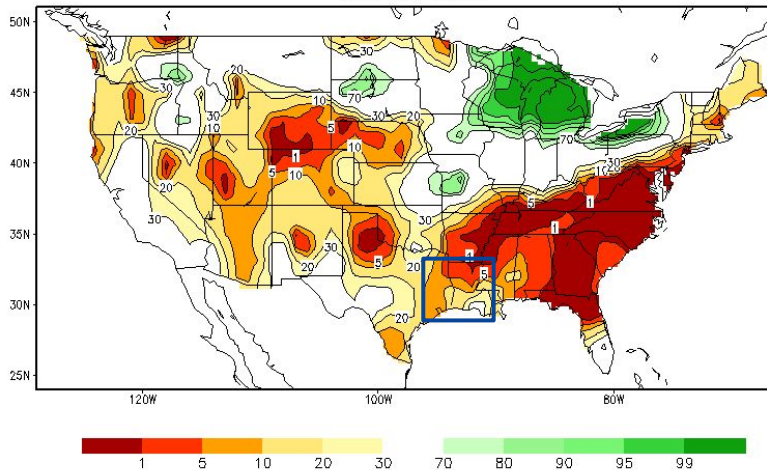




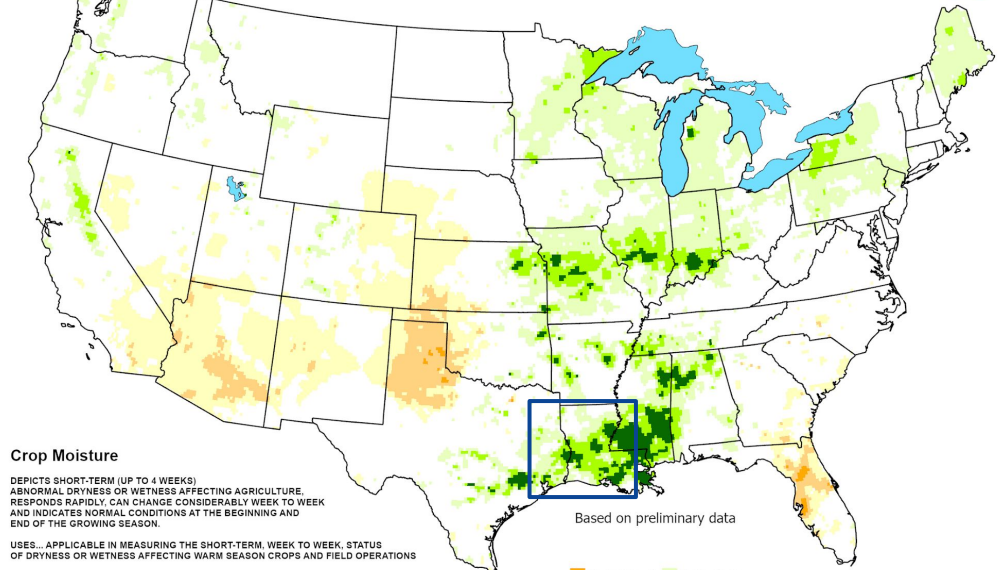
Agricultural Impacts

- Soil moisture is below normal across the area with shallow short term soil moisture slightly above normal along the coast with pockets of much above normal in Central Louisiana.

Calculated Soil Moisture Ranking Percentile
MAY 06, 2026



Crop Moisture Index
Value for the April 26 - May 2, 2026
Short Term Need vs. Available Water in a Shallow Soil Profile



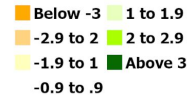
Crop Moisture

DEPICTS SHORT-TERM (UP TO 4 WEEKS) ABNORMAL DRYNESS OR WETNESS AFFECTING AGRICULTURE. RESPONDS RAPIDLY CAN CHANGE CONSIDERABLY WEEK TO WEEK AND INDICATES NORMAL CONDITIONS AT THE BEGINNING AND END OF THE GROWING SEASON.

USES... APPLICABLE IN MEASURING THE SHORT-TERM, WEEK TO WEEK, STATUS OF DRYNESS OR WETNESS AFFECTING WARM SEASON CROPS AND FIELD OPERATIONS

LIMITATIONS... MAY NOT BE APPLICABLE TO GERMINATING AND SHALLOW ROOTED CROPS WHICH ARE UNABLE TO EXTRACT THE DEEP OR SUBSOIL MOISTURE FROM A SHALLOW SOIL PROFILE OR FOR COOL SEASON CROPS GROWING WHEN TEMPERATURES ARE AVERAGING BELOW ABOUT 50°F IT IS NOT GENERALLY INDICATIVE OF THE LONG-TERM (MONTHS, YEARS) DROUGHT OR WET SPELLS WHICH ARE DEPICTED BY THE DROUGHT SEVERITY INDEX.

Based on preliminary data





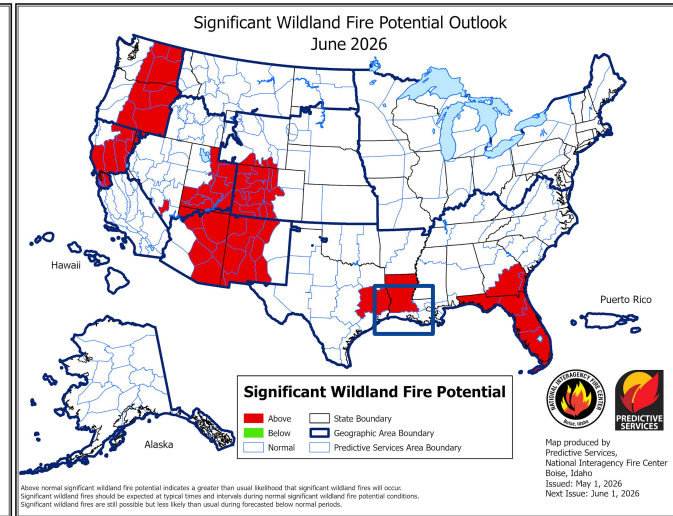
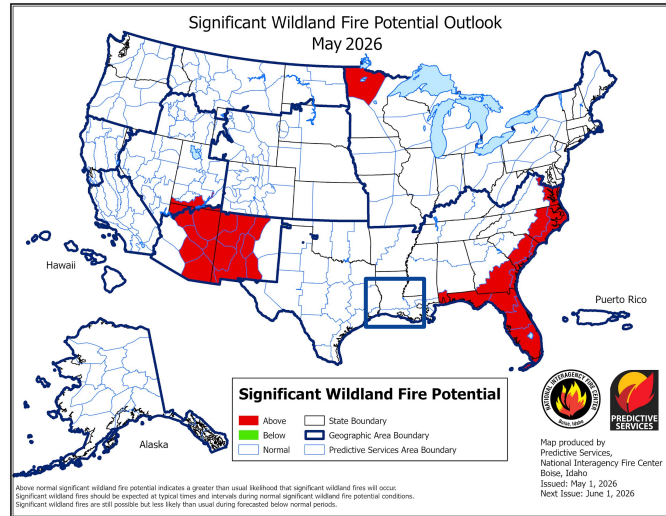
Fire Hazard Impacts

Link to [Wildfire Potential Outlooks from the National Interagency Coordination Center.](#)

- No Burn Bans are in effect.
- Wildfire conditions are expected to remain near normal in May and increase some in June.

Latest TX Burn Ban map available [here.](#)

Latest LA Burn Ban map available [here.](#)

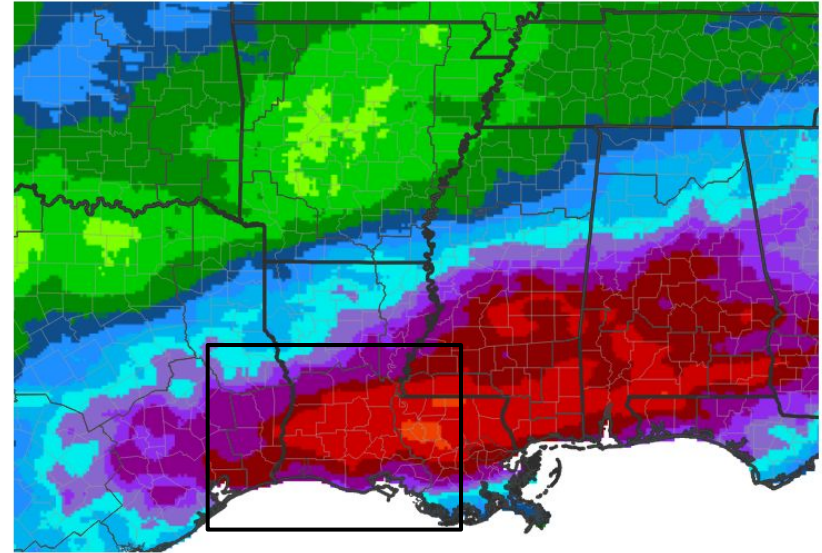




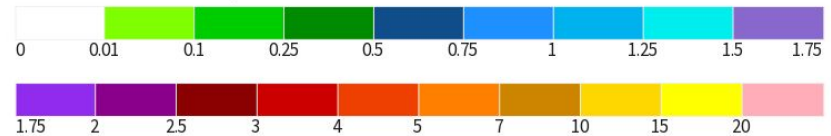
Seven Day Precipitation Forecast

- Rainfall amounts are expected to range from two to four inches across the area this week.

7-Day Quantitative Precipitation Forecast for May 7, 2026–May 14, 2026



Predicted Inches of Precipitation



Source(s): National Weather Service Weather Prediction Center; image courtesy of Drought.gov

Last Updated: 05/07/26



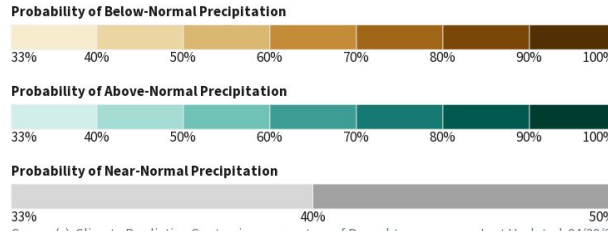
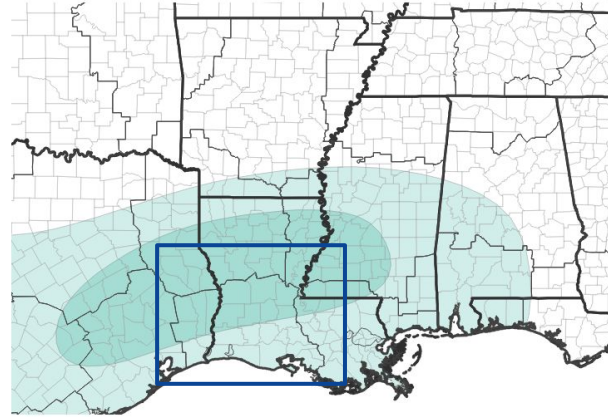


Long-Range Outlooks

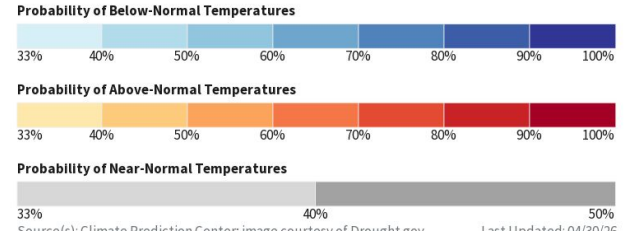
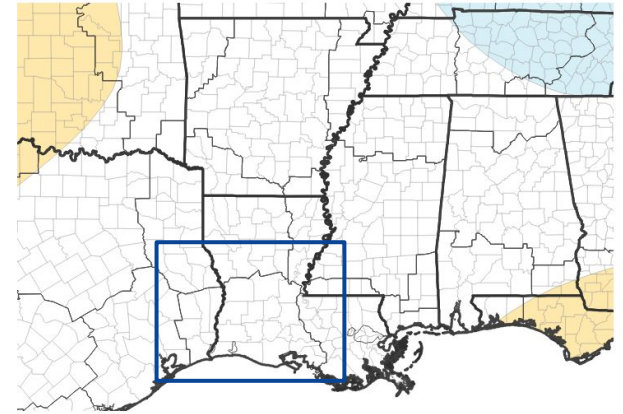
The latest monthly and seasonal outlooks can be found on the [CPC homepage](#)

- There are greater chances for the month of May to be above normal for rainfall and around normal for temperature.

Monthly Precipitation Outlook for May 1, 2026–May 31, 2026



Monthly Temperature Outlook for May 1, 2026–May 31, 2026



Source(s): Climate Prediction Center (image courtesy of Drought.gov) Last Updated: 04/30/26



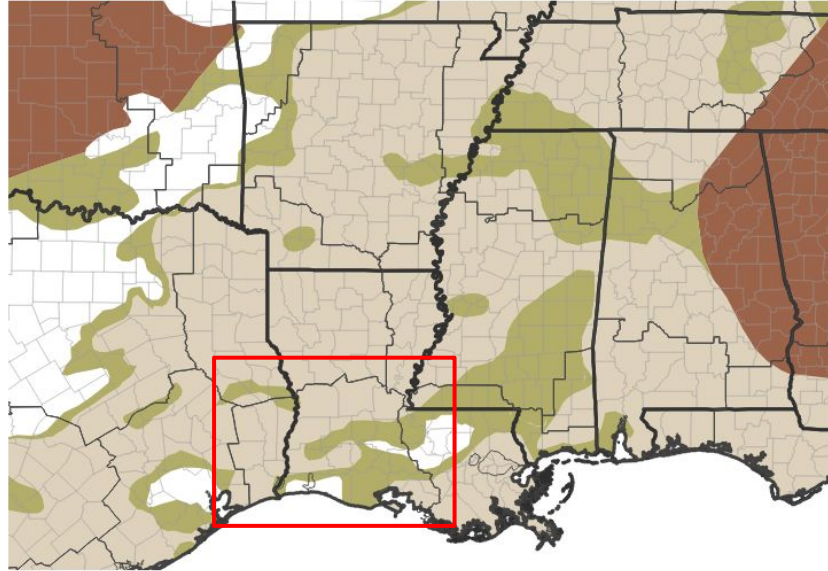


Drought Outlook

The latest monthly and seasonal outlooks can be found on the [CPC homepage](#)

- Seasonal precipitation amounts are likely to remain near normal, which will assist in drought conditions improving or ending across the area.

Seasonal (3-Month) Drought Outlook for April 30, 2026–July 31, 2026



Drought Is Predicted To...



Source(s): Climate Prediction Center; image courtesy of Drought.gov

Last Updated: 04/30/26

Links to the latest:

[Climate Prediction Center Monthly Drought Outlook](#)

[Climate Prediction Center Seasonal Drought Outlook](#)



National Oceanic and
Atmospheric Administration
U.S. Department of Commerce

National Weather Service
WFO Lake Charles, LA