



Drought Information Statement for Southeast TX and Southwest LA

Valid April 16, 2026

Issued By: WFO Lake Charles, LA

Contact Information:

- This product will be updated April 24th, 2026 or sooner if drought conditions change significantly.
 - Please see all currently available products at <https://drought.gov/drought-information-statements>.
 - Please visit <https://www.weather.gov/LCH/DroughtInformationStatement> for previous statements.
 - Please visit <https://www.drought.gov/drought-status-updates/> for regional drought status updates.
-
- **DROUGHT GENERALLY EXPANDED THIS WEEK. SOME RAINFALL IS EXPECTED THIS WEEKEND AND NEXT WEEK.**



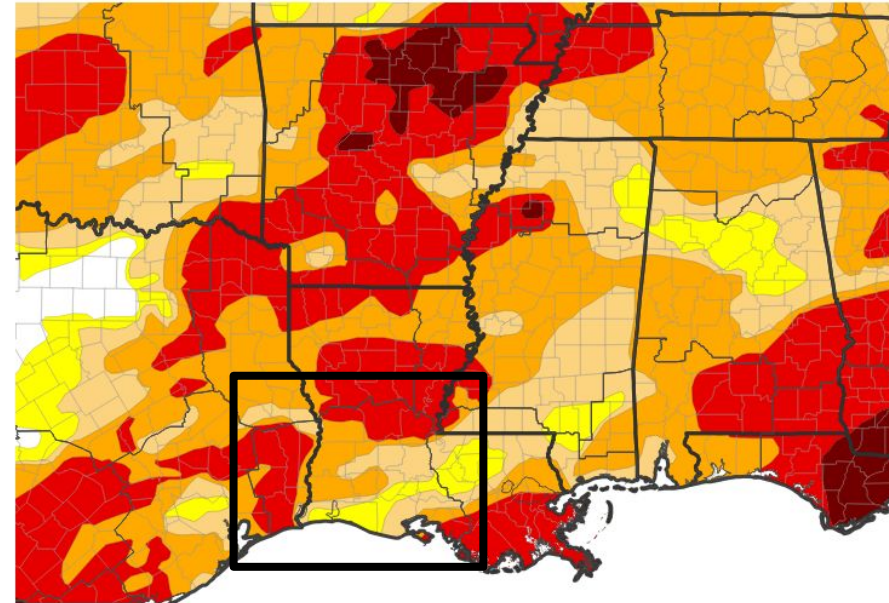


U.S. Drought Monitor

Link to the [latest U.S. Drought Monitor](#)

- Drought Intensity and Extent
 - **D3 (Extreme Drought)**: Rapides and Avoyelles, Northern Vernon and Lower St. Mary Parishes in Louisiana. Jefferson, Jasper, Newton, Hardin, Orange and Tyler Counties in Texas.
 - **D2 (Severe Drought)**: Calcasieu, Beauregard, Northwest Allen, Southern Vernon, Jefferson Davis and Northern St. Mary Parishes.
 - **D1 (Moderate Drought)**: Much of Allen, Evangeline, St. Landry, Acadia, Iberia, much of Vermilion, St. Martin and Small portions of Cameron.
 - **D0: (Abnormally Dry)**: Cameron and Lafayette.

U.S. Drought Monitor



U.S. Drought Monitor



Source(s): NDMC, NOAA, USDA, NASA; image courtesy of Drought.gov

Data Valid: 04/14/26



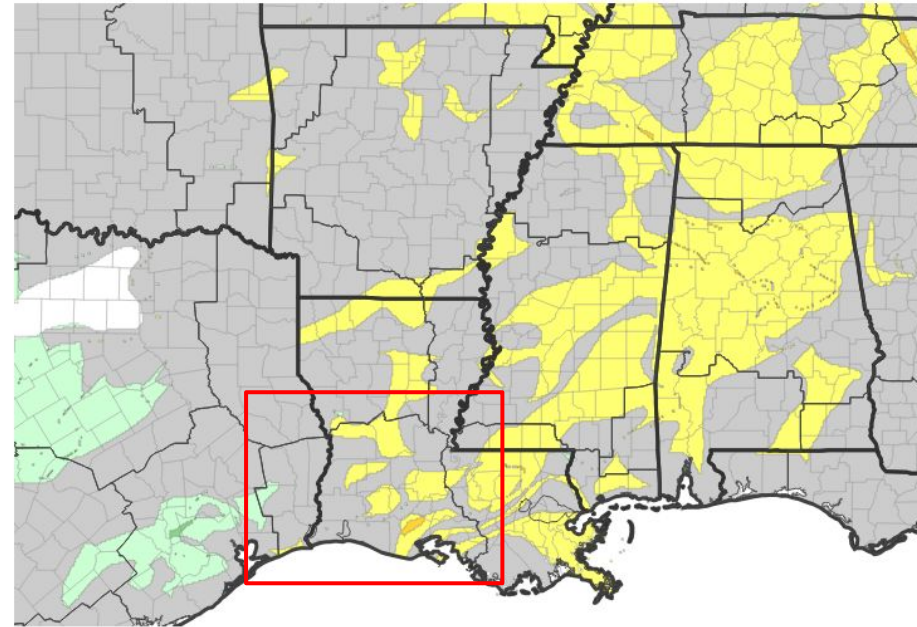


Recent Change in Drought Intensity

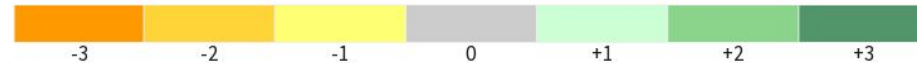
Link to the latest [1-week change map](#)

- One Week Drought Monitor Class Change.
 - Drought Worsened: In many areas across Louisiana.
 - No Change: Most of Southeast Texas and Extreme Southwest Louisiana.
 - Drought Improved: over Northwest Hardin County.

U.S. Drought Monitor 1-Week Change Map



Drought Change Since Last Week



Source(s): NDMC, NOAA, USDA, NASA; image courtesy of Drought.gov

Data Valid: 04/14/26



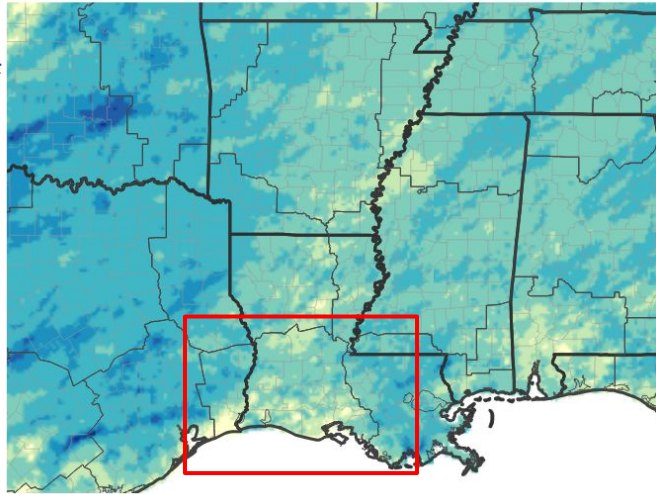


Precipitation

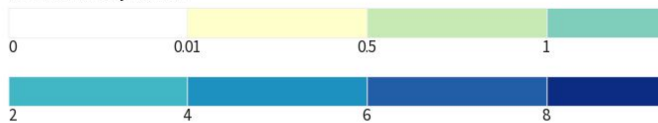
For the past 30 days

- Rainfall over the past 30 days is running 25 to around 50 percent of normal across the entire area with the exception of near normal precipitation near BA Steinhagen Lake and northwestern Hardin County over the past 30 days.

NWPS 30-Day Precipitation Accumulations (inches)

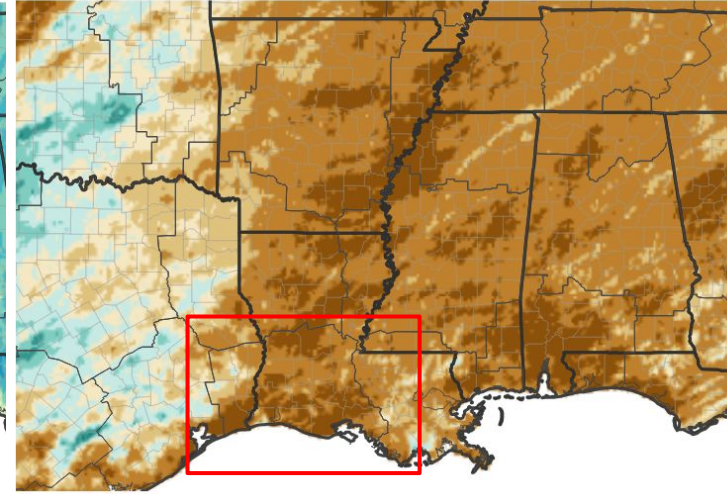


Inches of Precipitation

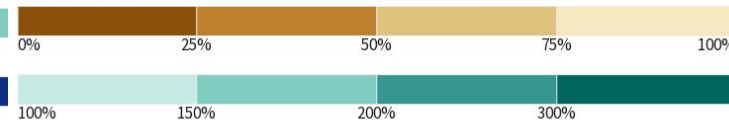


Source(s): National Weather Service National Water Prediction Service; image courtesy of Drought.gov

30-Day Precipitation: Percent of PRISM Normal



Precipitation Shown as a Percentage of Normal Conditions



Data Valid: Source(s): National Weather Service National Water Prediction Service; image courtesy of Drought.gov Data Valid: 04/15/26



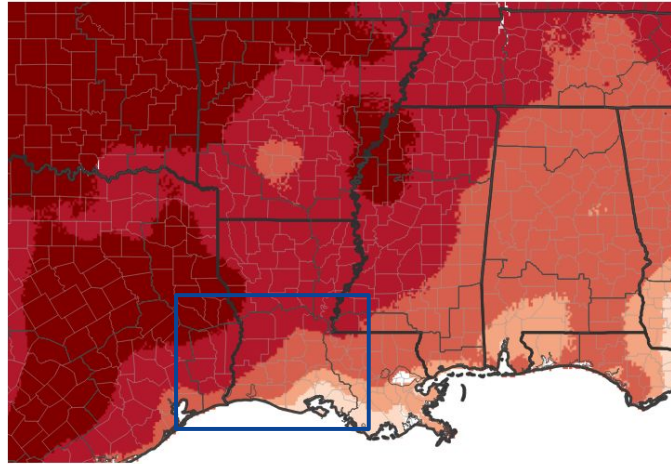


Temperature

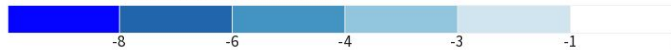
Link to [Southern Regional Climate Center](#)

- Temperatures have been above normal area wide across the region the past week.
- Above normal temperatures have been noted the previous 30 days.

7-Day Temperature Anomaly



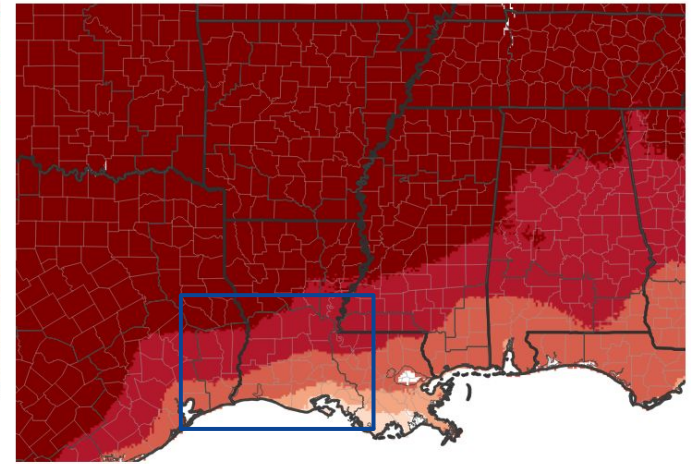
Departure from Normal Max Temperature (°F)



Source(s): NOAA's National Centers for Environmental Information; image courtesy of Drought.gov

Data Valid: 03/31/26

30-Day Temperature Anomaly



Departure from Normal Max Temperature (°F)



Source(s): NOAA's National Centers for Environmental Information; image courtesy of Drought.gov

Data Valid: 03/31/26





Summary of Impacts

Links: See/submit [Condition Monitoring Observer Reports \(CMOR\)](#) and view the [Drought Impacts Reporter](#)

Hydrologic Impacts

- Observed river flows are below to much below normal in all river basins with the only exception being Vermilion River with near normal flows for this time of year.

Agricultural Impacts

- Several Parishes dry to very dry conditions especially in Iberia and St. Mary Parishes.

Fire Hazard Impacts

- Recent fire activity has lessened with the onset of green up and increased humidity. However a few woods fires have been noted this past week across the area.
- Burn bans are currently in place for Newton County in Texas with all other burn bans lifted.

Other Impacts

- There are no known impacts at this time.

Mitigation Actions

- Please refer to your municipality and/or water provider for mitigation information.

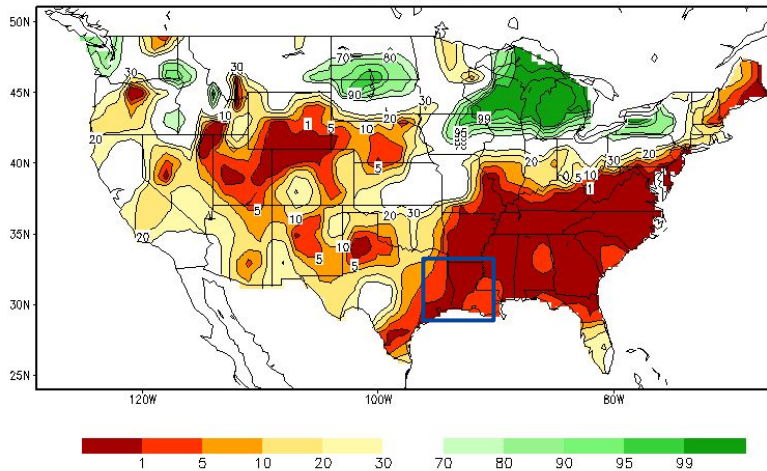




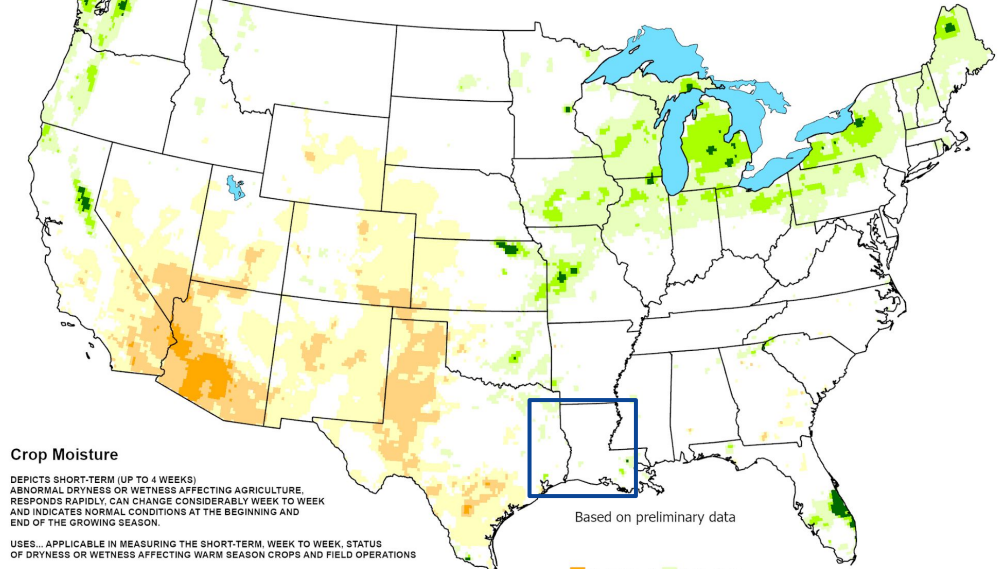
Agricultural Impacts

- Soil moisture is below normal across the area with shallow short term soil moisture near normal.

Calculated Soil Moisture Ranking Percentile
APR 15, 2026



Crop Moisture Index
Value for the April 5 - 11, 2026
Short Term Need vs. Available Water in a Shallow Soil Profile



Crop Moisture

DEPICTS SHORT-TERM (UP TO 4 WEEKS) ABNORMAL DRYNESS OR WETNESS AFFECTING AGRICULTURE. RESPONDS RAPIDLY CAN CHANGE CONSIDERABLY WEEK TO WEEK AND INDICATES NORMAL CONDITIONS AT THE BEGINNING AND END OF THE GROWING SEASON.

USES... APPLICABLE IN MEASURING THE SHORT-TERM, WEEK TO WEEK, STATUS OF DRYNESS OR WETNESS AFFECTING WARM SEASON CROPS AND FIELD OPERATIONS

LIMITATIONS... MAY NOT BE APPLICABLE TO GERMINATING AND SHALLOW ROOTED CROPS WHICH ARE UNABLE TO EXTRACT THE DEEP OR SUBSOIL MOISTURE FROM A SHALLOW SOIL PROFILE OR FOR COOL SEASON CROPS GROWING WHEN TEMPERATURES ARE AVERAGING BELOW ABOUT 50°F IT IS NOT GENERALLY INDICATIVE OF THE LONG-TERM (MONTHS, YEARS) DROUGHT OR WET SPELLS WHICH ARE DEPICTED BY THE DROUGHT SEVERITY INDEX.

Based on preliminary data

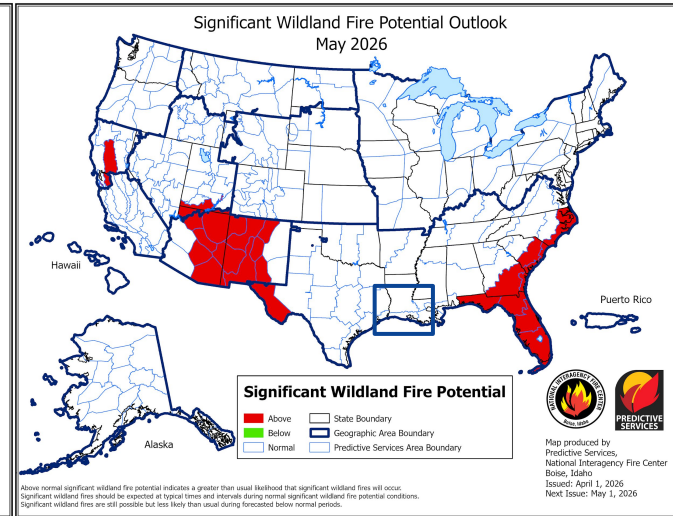
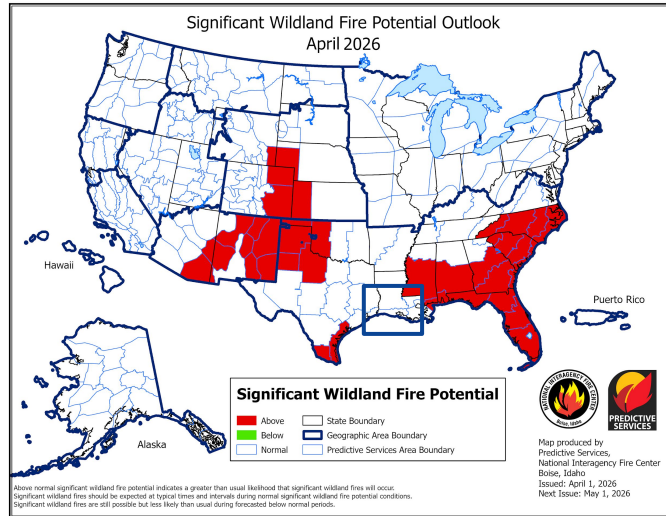




Fire Hazard Impacts

Link to [Wildfire Potential Outlooks from the National Interagency Coordination Center.](#)

- A Burn Ban remains in place for Newton county.
- Wildfire conditions are expected to remain near normal in April and May.



Latest TX Burn Ban map available [here.](#)

Latest LA Burn Ban map available [here.](#)

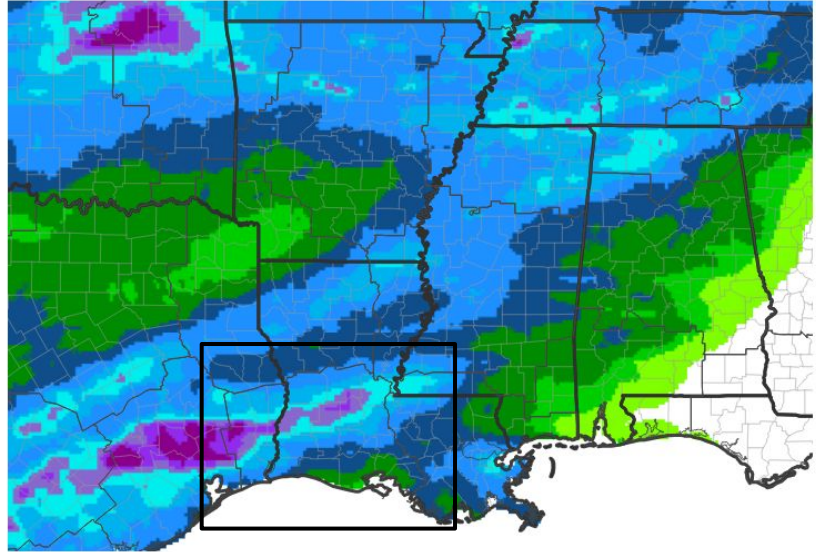




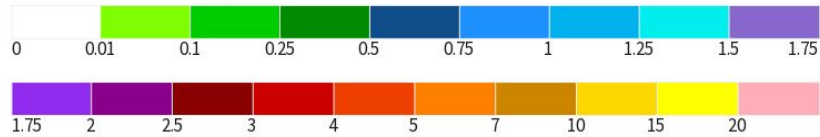
Seven Day Precipitation Forecast

- A decent rain is predicted over the next seven days with one quarter to as much as two inches over the next week. Locally higher amounts are possible.

7-Day Quantitative Precipitation Forecast for April 16, 2026-April 23, 2026



Predicted Inches of Precipitation



Source(s): National Weather Service Weather Prediction Center; image courtesy of Drought.gov Last Updated: 04/16/26



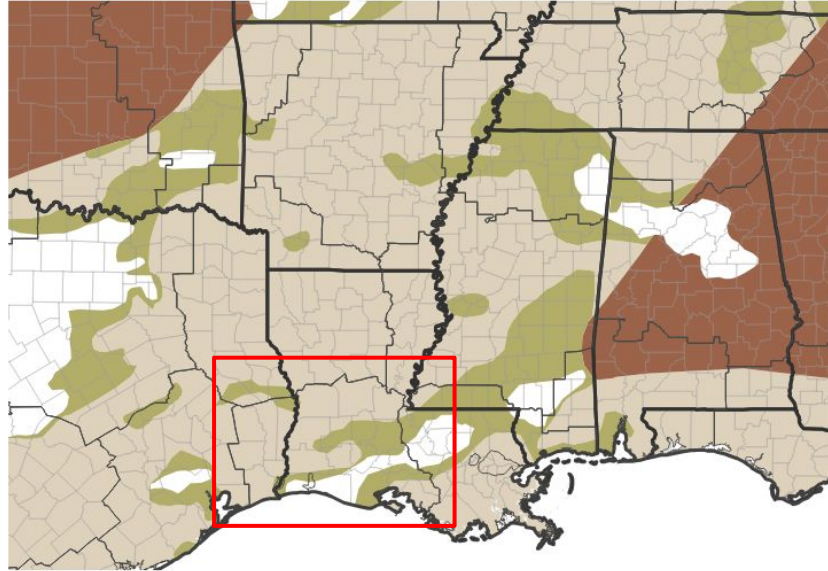


Drought Outlook

The latest monthly and seasonal outlooks can be found on the [CPC homepage](#)

- Seasonal precipitation amounts are likely to remain near normal, which will assist in drought conditions improving or ending across the area.

Seasonal (3-Month) Drought Outlook for April 16, 2026–July 31, 2026



Drought Is Predicted To...



Source(s): Climate Prediction Center: image courtesy of Drought.gov

Last Updated: 04/16/26

Links to the latest:

- [Climate Prediction Center Monthly Drought Outlook](#)
- [Climate Prediction Center Seasonal Drought Outlook](#)

