



# Drought Information Statement for Southeast TX and Southwest LA

Valid January, 15, 2026

Issued By: WFO Lake Charles, LA

## Contact Information:

- This product will be updated January, 23, 2026 or sooner if drought conditions change significantly.
- Please see all currently available products at <https://drought.gov/drought-information-statements>.
- Please visit <https://www.weather.gov/LCH/DroughtInformationStatement> for previous statements.
- Please visit <https://www.drought.gov/drought-status-updates/> for regional drought status updates.

- DROUGHT CONDITIONS OVER MOST OF THE AREA CONTINUE TO WORSEN
- SOME IMPROVEMENT WITH RECENT RAINFALL HAS BEEN NOTED ACROSS ACADIANA.

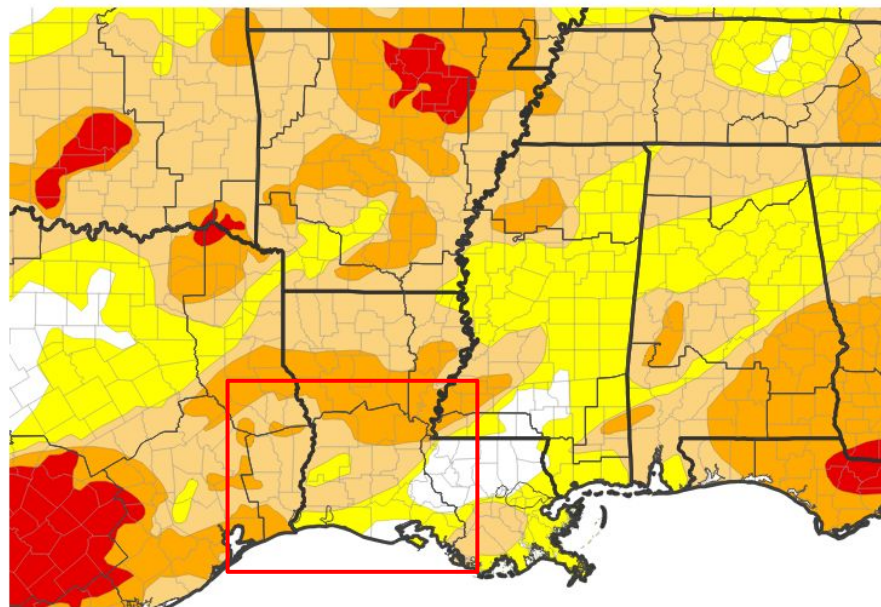


# U.S. Drought Monitor

Link to the [latest U.S. Drought Monitor](#)

- Drought Intensity and Extent
  - **D2 (Severe Drought)**: Portions of Southeast Texas and Central Louisiana.
  - **D1 (Moderate Drought)**: Much of the region north of I-10
  - **D0: (Abnormally Dry)**: Parts of central and coastal Louisiana.

## U.S. Drought Monitor



## U.S. Drought Monitor



Source(s): NDMC, NOAA, USDA; image courtesy of Drought.gov

Data Valid: 01/13/26



National Oceanic and  
Atmospheric Administration  
U.S. Department of Commerce

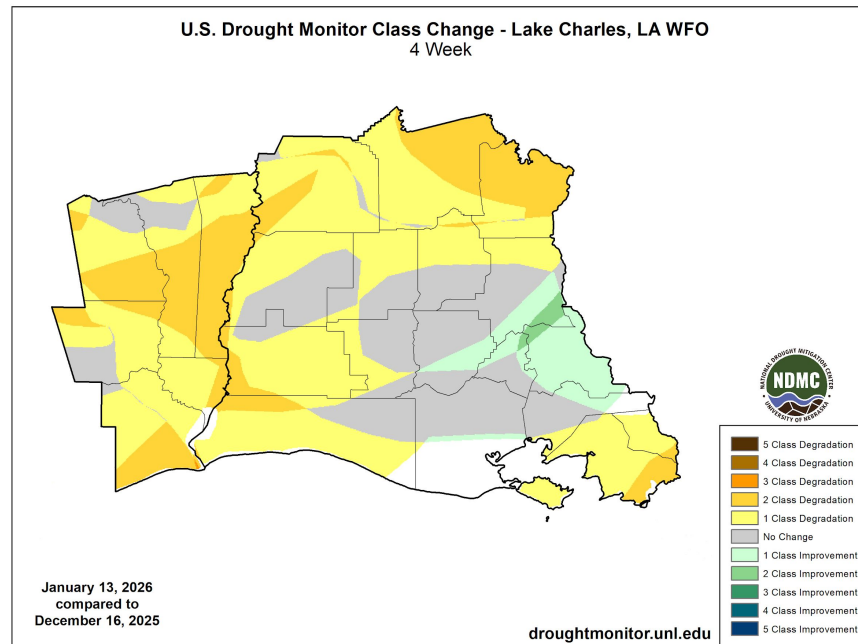
National Weather Service  
WFO Lake Charles, LA



# Recent Change in Drought Intensity

Link to the latest [4-week change map](#)

- Four Week Drought Monitor Class Change.
  - Drought Worsened: 1 to 2 category class changes have been noted across much of the area.
  - Drought Improved: 1 to 2 category improvement has occurred across a small portion of Acadiana due to recent rainfall events.



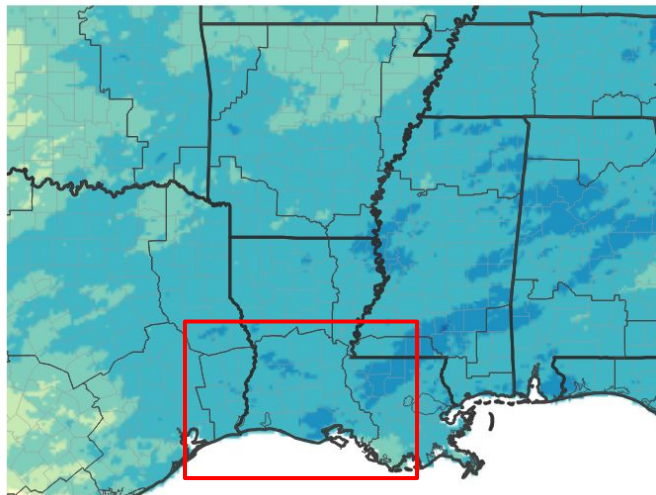


# Precipitation

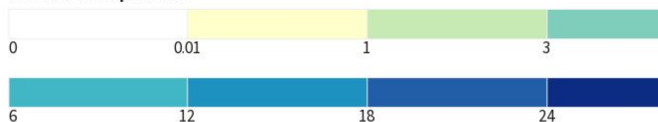
For the past 90 days

- With the exception of Vermilion Parish precipitation continues to below normal over the past 90 days.

NWPS 90-Day Precipitation Accumulations (inches)

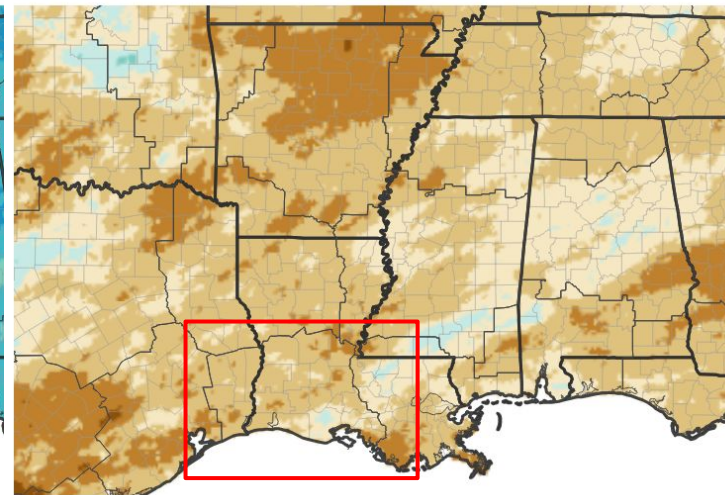


Inches of Precipitation

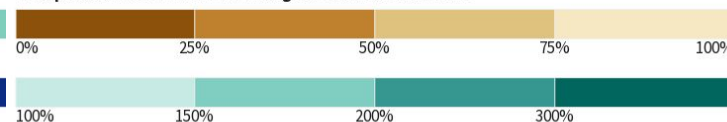


Source(s): National Weather Service National Water Prediction Service;  
image courtesy of Drought.gov

90-Day Precipitation: Percent of PRISM Normal



Precipitation Shown as a Percentage of Normal Conditions



Data Valid: Source(s): National Weather Service National Water Prediction Service;  
image courtesy of Drought.gov

Data Valid: 01/14/26



National Oceanic and  
Atmospheric Administration  
U.S. Department of Commerce

National Weather Service  
WFO Lake Charles, LA



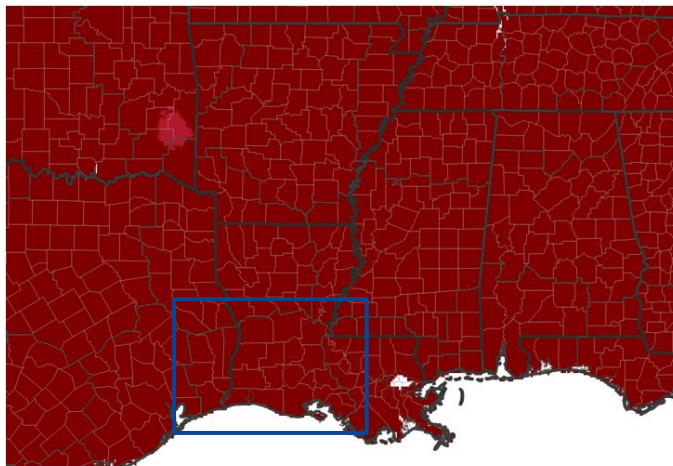


# Temperature

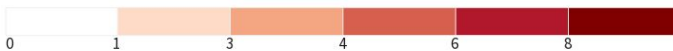
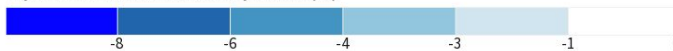
Link to [Southern Regional Climate Center](#)

- Temperatures continue to be well above normal this winter season.

7-Day Temperature Anomaly



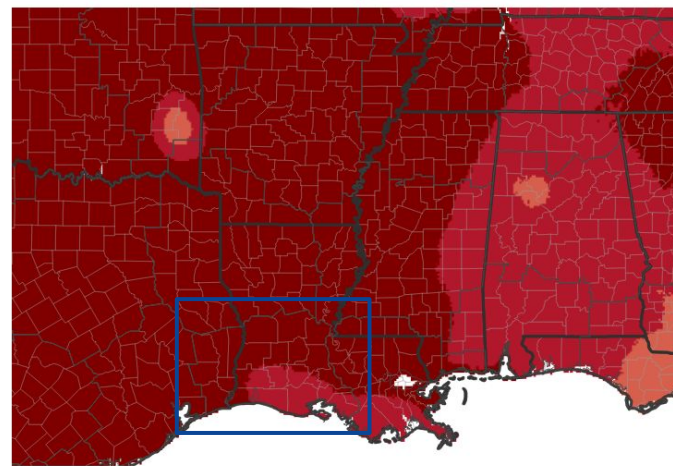
Departure from Normal Max Temperature (°F)



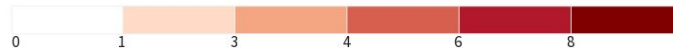
Source(s): NOAA's National Centers for Environmental Information; image courtesy of Drought.gov

Data Valid: 01/11/26

30-Day Temperature Anomaly



Departure from Normal Max Temperature (°F)



Source(s): NOAA's National Centers for Environmental Information; image courtesy of Drought.gov

Data Valid: 01/11/26



National Oceanic and  
Atmospheric Administration  
U.S. Department of Commerce

National Weather Service  
WFO Lake Charles, LA



# Summary of Impacts

Links: See/submit [Condition Monitoring Observer Reports \(CMOR\)](#) and view the [Drought Impacts Reporter](#)

## Hydrologic Impacts

- Much below normal flows are observed on most river basins.

## Agricultural Impacts

- Severely Dry Crop Soil Moisture Index

## Fire Hazard Impacts

- Increased wildfire risk when coupled with low humidity and elevated winds.

## Other Impacts

- There are no known impacts at this time.

## Mitigation Actions

- Please refer to your municipality and/or water provider for mitigation information.





# Hydrologic Conditions and Impacts

- Much below normal flows are observed on most river basins.

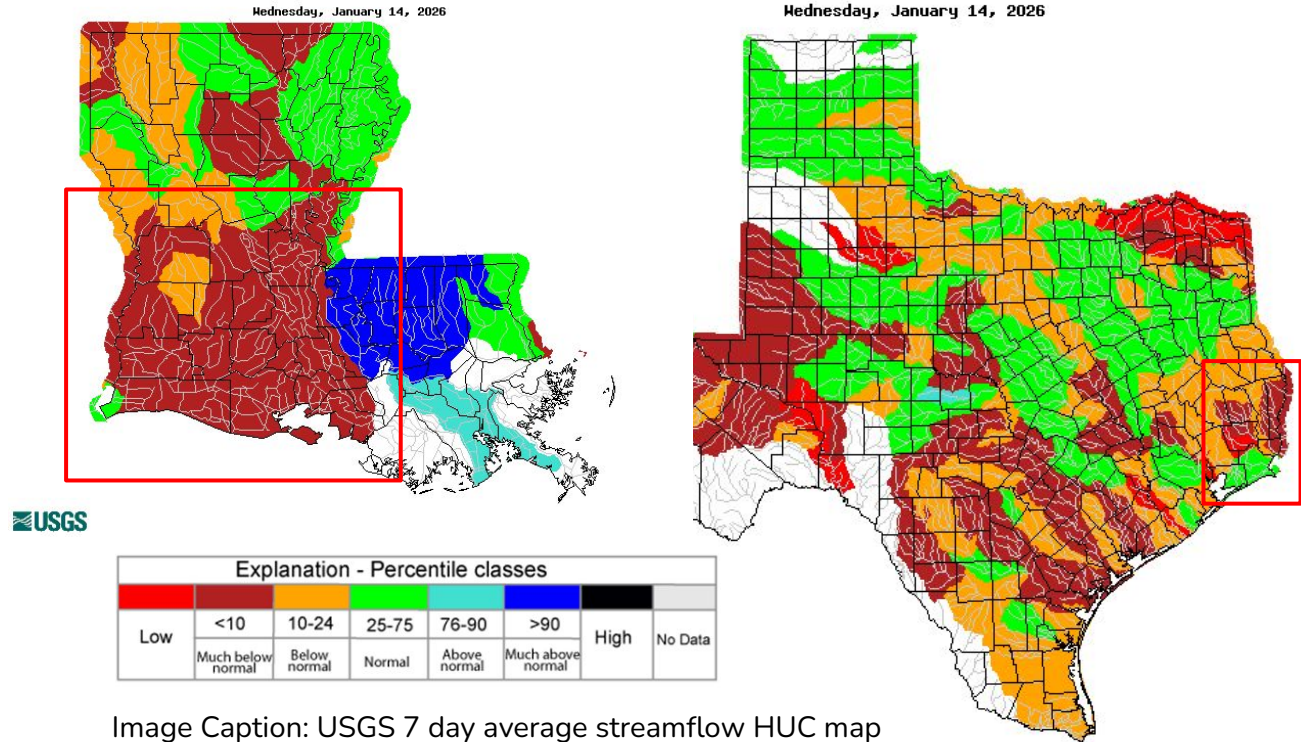


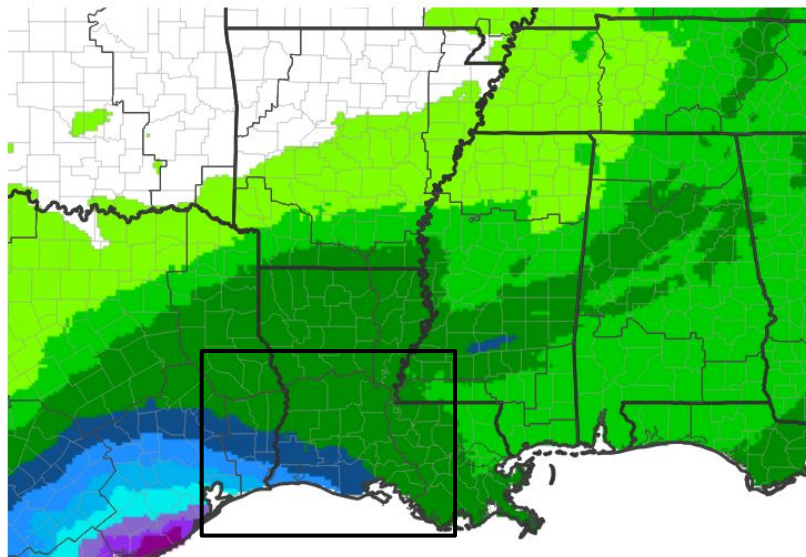
Image Caption: USGS 7 day average streamflow HUC map valid 01 14 2026



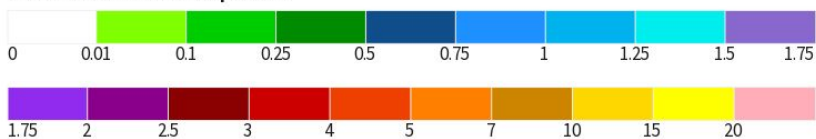
# Seven Day Precipitation Forecast

- One quarter to one inch of rainfall is forecast over the next week.

**7-Day Quantitative Precipitation Forecast for January 15, 2026–January 22, 2026**



**Predicted Inches of Precipitation**



Source(s): National Weather Service Weather Prediction Center; image courtesy of Drought.gov

Last Updated: 01/15/26





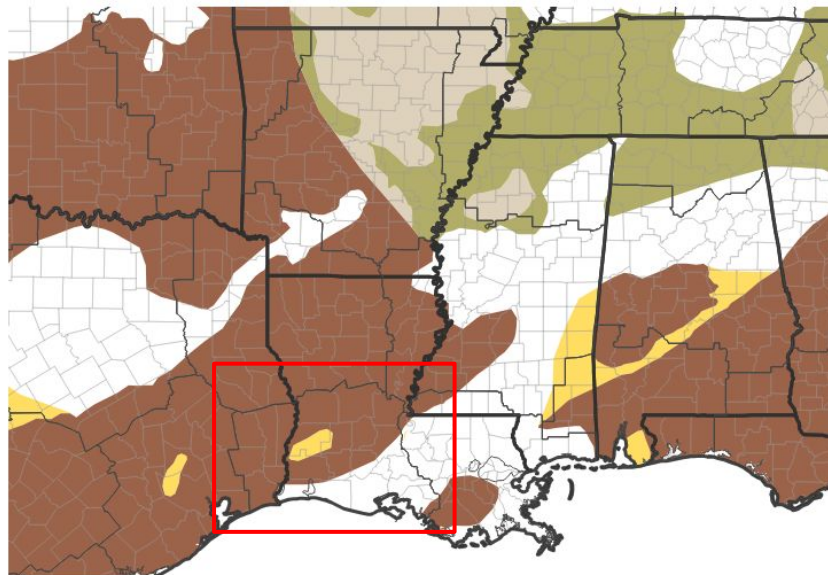


# Drought Outlook

The latest monthly and seasonal outlooks can be found on the [CPC homepage](#)

- Drought conditions are expected to persist across most of the area.

## Seasonal (3-Month) Drought Outlook for January 15, 2026–April 30, 2026



Drought Is Predicted To...



Source(s): Climate Prediction Center; image courtesy of Drought.gov

Last Updated: 01/15/26

Links to the latest:

[Climate Prediction Center Monthly Drought Outlook](#)

[Climate Prediction Center Seasonal Drought Outlook](#)



National Oceanic and  
Atmospheric Administration  
U.S. Department of Commerce

National Weather Service  
WFO Lake Charles, LA