



# Drought Information Statement for Central and Southeast Illinois

Valid November 20, 2025

Issued By: WFO Lincoln, IL

Contact Information: [nws.lincoln@noaa.gov](mailto:nws.lincoln@noaa.gov)

- The next update will be Thursday, November 27th, if conditions persist or worsen.
- Please see all currently available products at <https://drought.gov/drought-information-statements>.
- Please visit <https://www.weather.gov/ilx/DroughtInformationStatement> for previous statements.
- Please visit <https://www.drought.gov/drought-status-updates> for regional drought status updates.

## Key Messages:

- Despite a small stripe of heavy rain over south central Illinois, much of the recent rainfall did not make a significant difference in drought conditions.
- The highest probabilities (40%) of seeing more than an inch of rain will be south of I-70, rather than over the worst of the drought conditions.





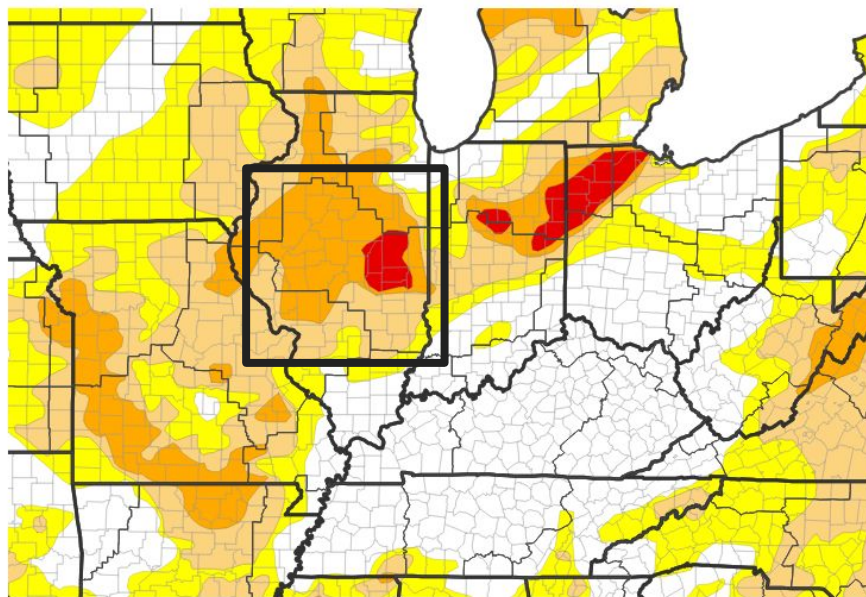
# U.S. Drought Monitor

Link to the [latest U.S. Drought Monitor](#) for central and southeast Illinois

- **Drought Intensity and Extent:**

- **D4 (Exceptional Drought):** N/A
- **D3 (Extreme Drought):** Portions of east-central Illinois over Piatt, Douglas, Champaign, Moultrie and parts of Coles, De Witt, and Edgar Counties.
- **D2 (Severe Drought):** Most of central Illinois near and north of I-72, as well as Vermilion County. Also including Moultrie, Coles, and Edgar Counties.
- **D1 (Moderate Drought):** Most areas near and south of I-70, along with Shelby County.
- **D0: (Abnormally Dry):** Small area in southeast Illinois near the Wabash River in Lawrence and southeast Crawford counties.

U.S. Drought Monitor



U.S. Drought Monitor



Source(s): NDMC, NOAA, USDA; image courtesy of Drought.gov

Data Valid: 11/18/25



National Oceanic and  
Atmospheric Administration  
U.S. Department of Commerce

National Weather Service  
Lincoln, Illinois



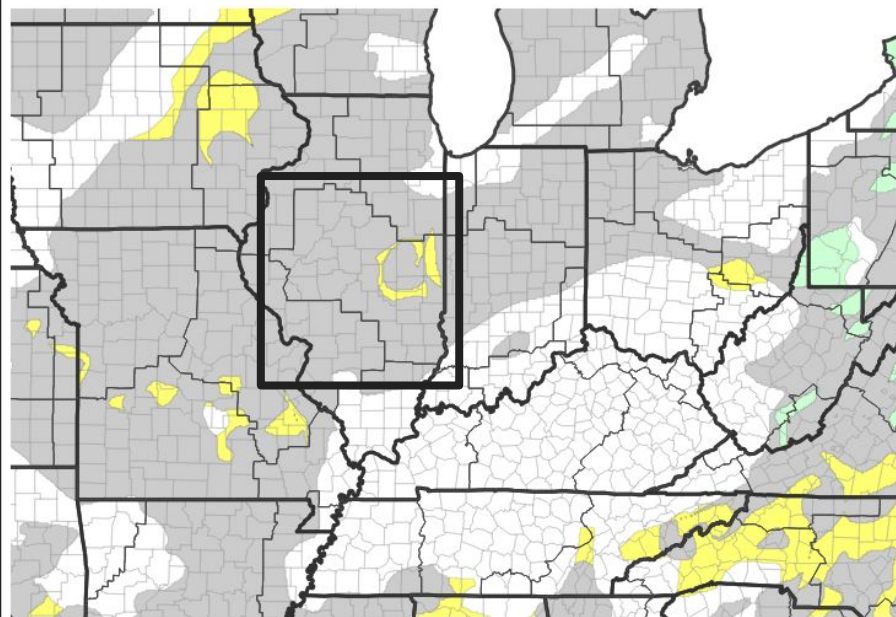
# Recent Change in Drought Intensity

Link to the latest [1-week change map](#) for central and southeast Illinois

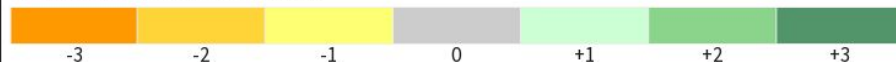
- **One Week Drought Monitor Class Change.**
  - Drought Worsened:
    - Portions of De Witt, Moultrie, Coles, and Vermilion Counties.
  - Drought Improved:
    - N/A
  - No Change:
    - Most of central and southeastern Illinois

**Image Caption:** One week change in drought monitor categories. Image from [Drought.gov](#).

U.S. Drought Monitor 1-Week Change Map



Drought Change Since Last Week



Source(s): NDMC, NOAA, USDA; image courtesy of Drought.gov

Data Valid: 11/18/25



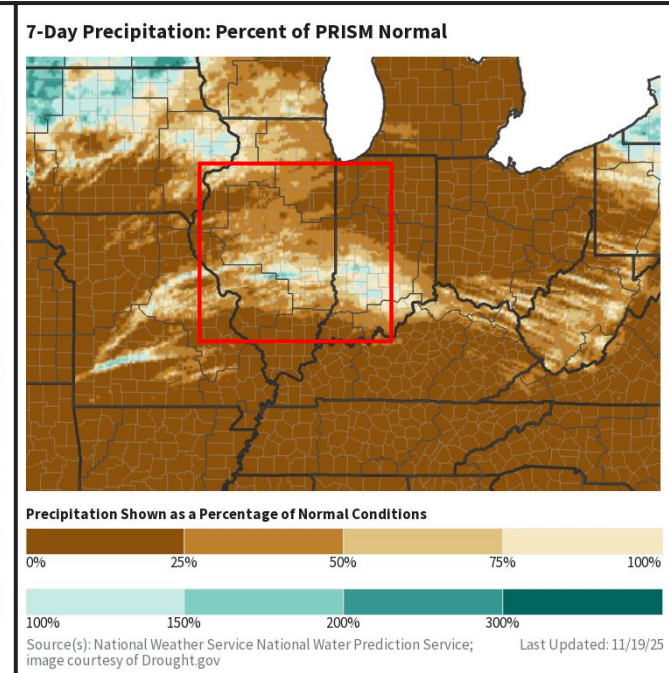
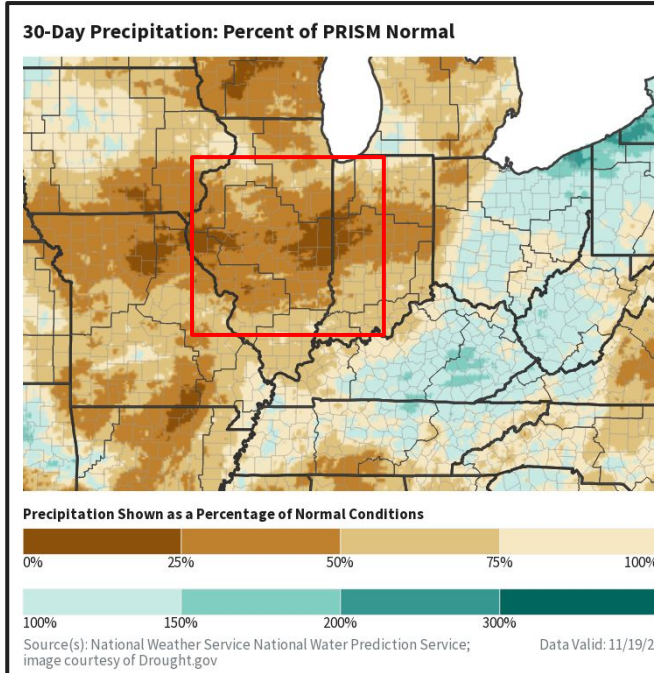




# Recent Precipitation

Last 7 days and 30 days

- Rainfall over the last week was highest south of a Springfield to Danville line ( $>0.50$ " ), with a narrow corridor of 1" or higher from near Pana east to Terre Haute.
- Widespread areas of east central and west central Illinois have seen less than 25% of normal rainfall during the last month.



**Image Caption:** Total precipitation as a percentage of normal, as of November 19th. Left image is a 30 day average, right image the last 7 days. Images from [Drought.gov](https://drought.gov).



National Oceanic and  
Atmospheric Administration

U.S. Department of Commerce

National Weather Service  
Lincoln, Illinois



# Summary of Impacts

Links: See/submit [Condition Monitoring Observer Reports \(CMOR\)](#) and view the [Drought Impacts Reporter](#)

## Hydrologic Impacts

- Streamflow on most rivers is below normal, with several river basins below the 10th percentile.
- Near record low flow on the east end of the Sangamon River basin is impacting water supplies of Lake Decatur downstream.
- Lake levels: Lake Decatur around 3 feet below seasonal normals, Lake Shelbyville about 2.2 feet below normal, Lake Springfield 0.8 feet below normal. Smaller lakes and ponds are low.

## Agricultural Impacts

- Poor pasture conditions providing very little or no feed for livestock. Supplemental feed required.

## Fire Hazard Impacts

- Localized, enhanced fire risk where any burning is being done.

## Other Impacts

- Extremely poor to record low water table and deep soil moisture conditions.

## Mitigation Actions

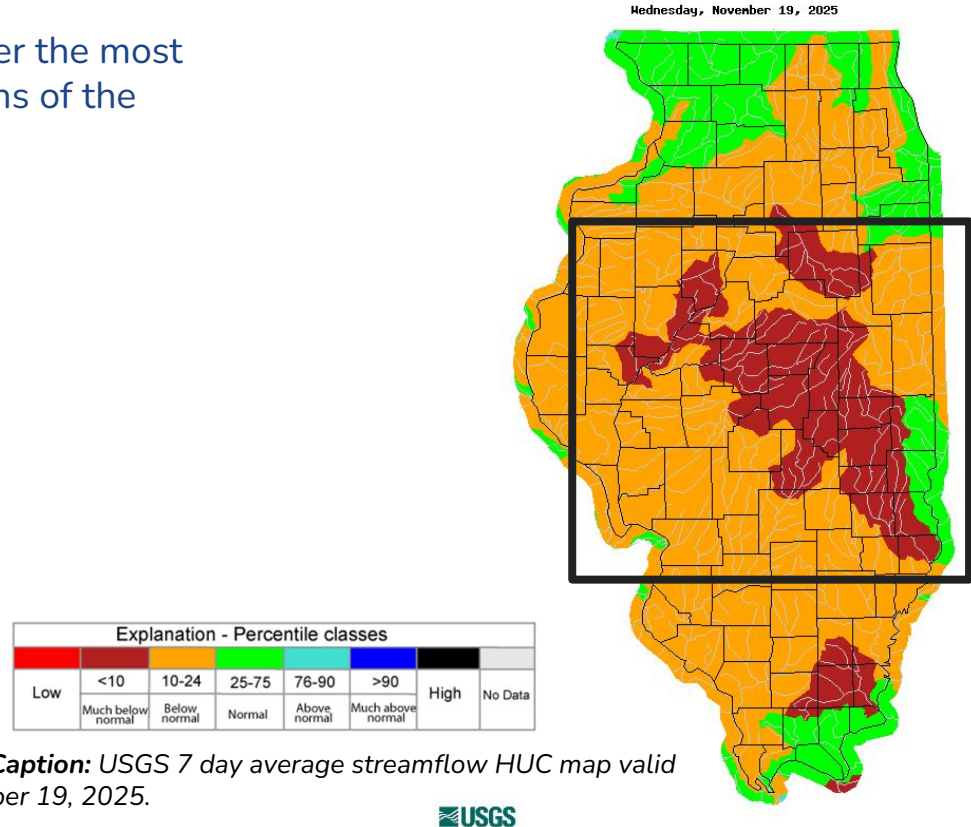
- Stage 1 water rationing is in effect in Decatur.





# Hydrologic Conditions and Impacts

- Most streamflows are below normal, however the most significant streamflow impacts are on portions of the Illinois, Sangamon, and Kaskaskia Rivers.



**Image Caption:** USGS 7 day average streamflow HUC map valid November 19, 2025.

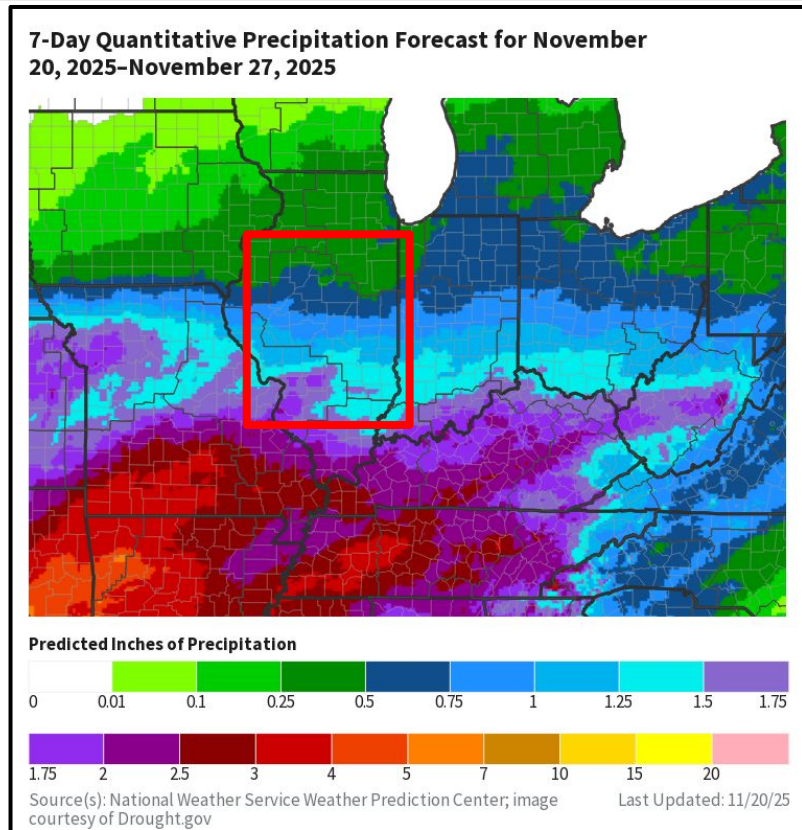




# Seven Day Precipitation Forecast

- A couple periods of rain chances are on tap, one through Friday night and the other early next week.
- Best chances for any meaningful drought relief will be south of I-70.

**Image Caption:** Expected rainfall over the next 7 days, valid through 6 PM Thursday, Nov 27. Check [weather.gov/ilx](https://weather.gov/ilx) for updated forecasts.



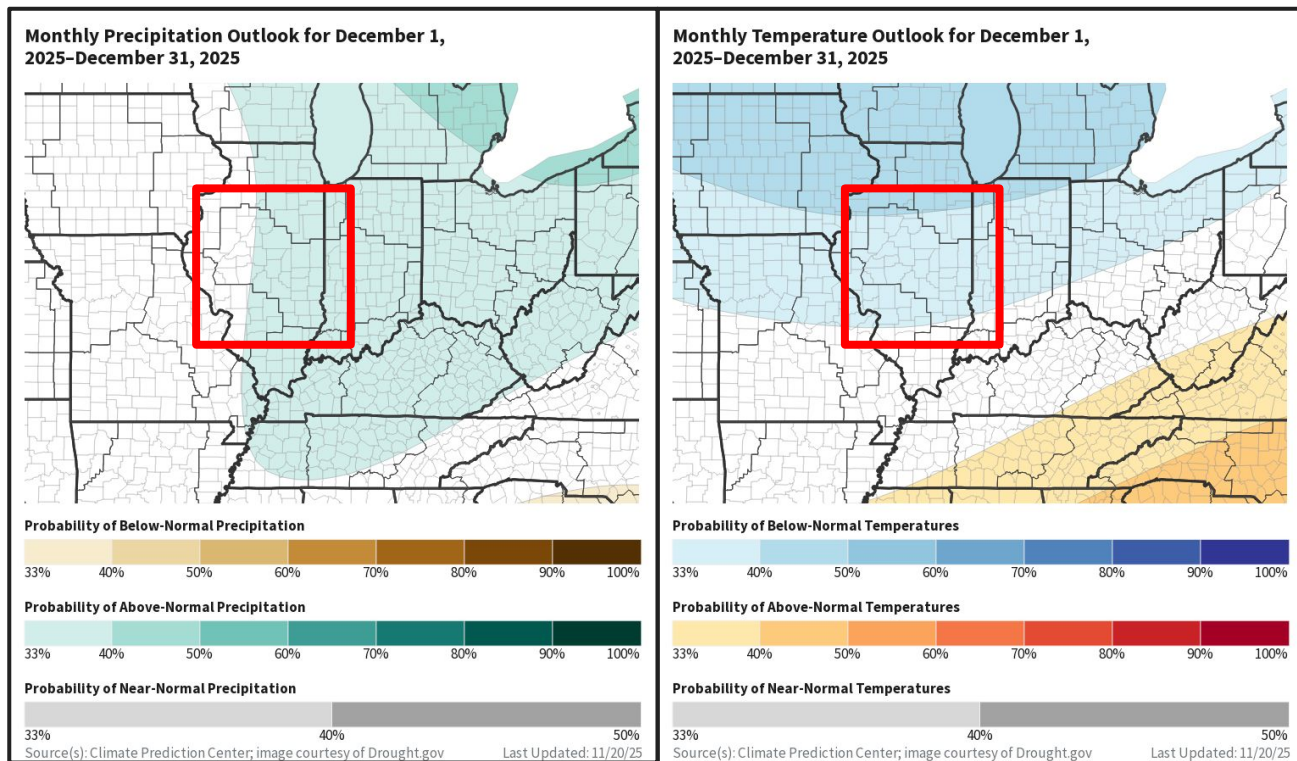




# Long Range Outlooks

The latest monthly and seasonal outlooks can be found on the [CPC homepage](#)

- The impacts of La Niña conditions lean toward December trending cooler and wetter than normal.
- The November temperature outlook depicts approximately equal chances for above and below normal temperatures, on average throughout the month.



**Image Caption:** Precipitation (left) and temperature (right) outlooks for December. Check [weather.gov/ilx](#) for updated forecasts.



National Oceanic and  
Atmospheric Administration  
U.S. Department of Commerce

National Weather Service  
Lincoln, Illinois

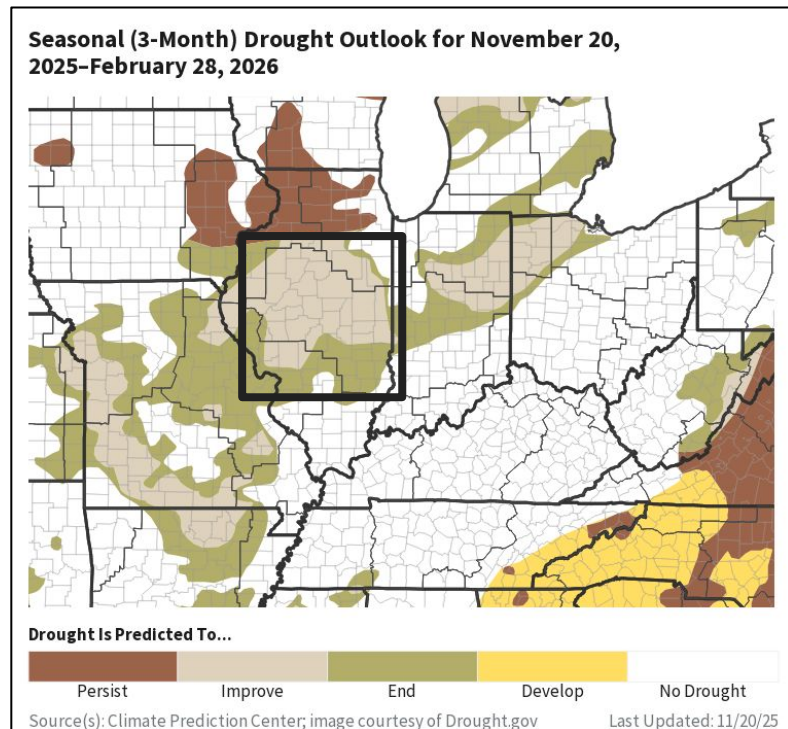




# Drought Outlook

The latest monthly and seasonal outlooks can be found on the [CPC homepage](#)

- While the drought is forecast to persist through the end of the year, trends are pointing toward improving conditions through the balance of the winter season.



**Image Caption:**

Climate Prediction Center Seasonal Drought Outlook released Nov. 20, valid through February 28, 2026. Images from Drought.gov.

Links to the latest:

[Climate Prediction Center Monthly Drought Outlook](#)

[Climate Prediction Center Seasonal Drought Outlook](#)



**National Oceanic and  
Atmospheric Administration**  
U.S. Department of Commerce

**National Weather Service**  
Lincoln, Illinois