

May 2021 Weather Digest



May 2021 Weather Summary

May turned out to be a fairly typical late spring month with mostly dry and warm temperatures. Most sites ranged from about 1 to 2 degrees above normal for average daily temperature. Unfortunately, May weather can be quite dry and this year's May was even drier than normal. Much of the area only received about 10 to 50 percent of their normal monthly rainfall. Only portions of Hudspeth County were able to do better, receiving about 150 to 300 percent of normal. As is typical of May, we did start to see several interactions with the Texas dryline. This dryline will move west into the Borderland several times during the month, but usually only about as far west as the Rio Grande Valley. Hence Otero and Hudspeth Counties can start to see rainfall from thunderstorms. Thunderstorms for other areas further west are very hit and miss. The month experienced numerous windy days although mostly missing out on stronger damaging wind days. A Pacific storm did move through on the 2nd and 3rd, with gusty winds and a few mountain showers. Another storm pushed through on the 13th with another round of gusty winds.

With the continued lack of rain, drought conditions across the Borderland were unable to improve any, with the majority of the area remaining in extreme to exceptional drought status. Sierra and Hudspeth Counties remained

May 2021 Weather Summary, cont'd

in moderate to severe drought status. Elephant Butte and Caballo Reservoirs were seasonably low due to the ongoing drought, and water release for the Rio Grande, which is usually initiated in April or May, is not scheduled to begin until June 1. Our La Niña pattern is quickly coming to an end, with the ENSO pattern transitioning to a neutral phase. Hopefully this will be a good omen for a more productive wet Monsoon season ahead.

Looking ahead to June, we reach the peak daylength and warmest days of the year on average. The summer solstice occurs on the June 20th at 9:32 pm MDT. The warmest day of the year with respect to daily high temperatures occurs from the 13th through 29th, with the warmest overall day occurring on the 25th. The month begins with 14 hours and 5 minutes on the 1st, peaking at 14 hours and 13 minutes on the 20th and 21st. Daylength then slowly begins to decrease after the Solstice, down to 14 hours and 11 minutes by the end of the month. For you lunar fans, our full moon for this month falls on the 24th. It is popularly known as the Strawberry Moon, as farmers and citizens of the distant past observed their strawberry crops ripening during June. The new moon occurs on the 10th.



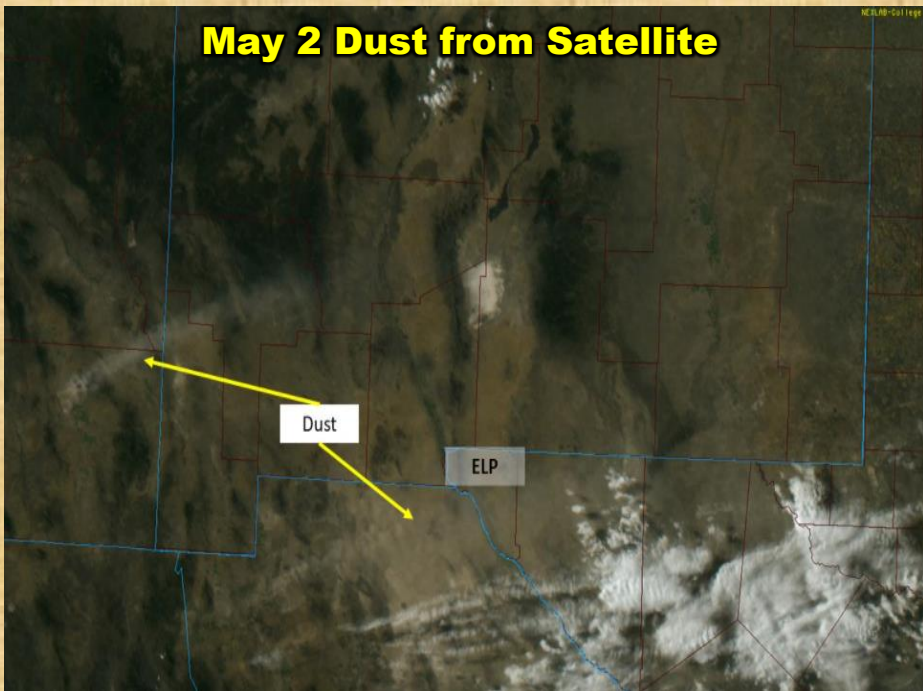
May 2 Dust Lordsburg



May 6 Dust Las Cruces



May 6 Dust El Paso



May 2 Dust from Satellite

May 13 Dust El Paso

KFOX14
SEVERE
WEATHER TEAM

LIVE ONLINE WEATHER
NETWORK

MOUNTAIN
STAR



May 14 Dust El Paso



ENSO Alert System Status: Final La Niña Advisory

ENSO Alert System

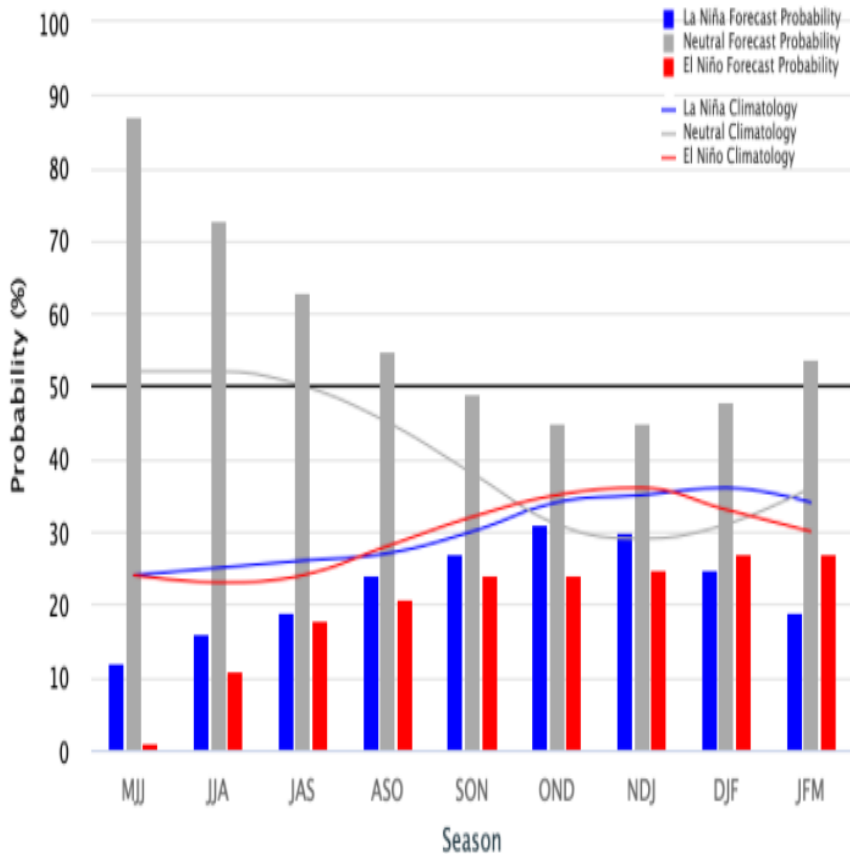
- **El Niño or La Niña Watch:** Issued when conditions are favorable for the development of El Niño or La Niña conditions in the next six months.
- **El Niño or La Niña Advisory:** Issued when El Niño or La Niña conditions are observed and expected to continue.

ENSO Forecast

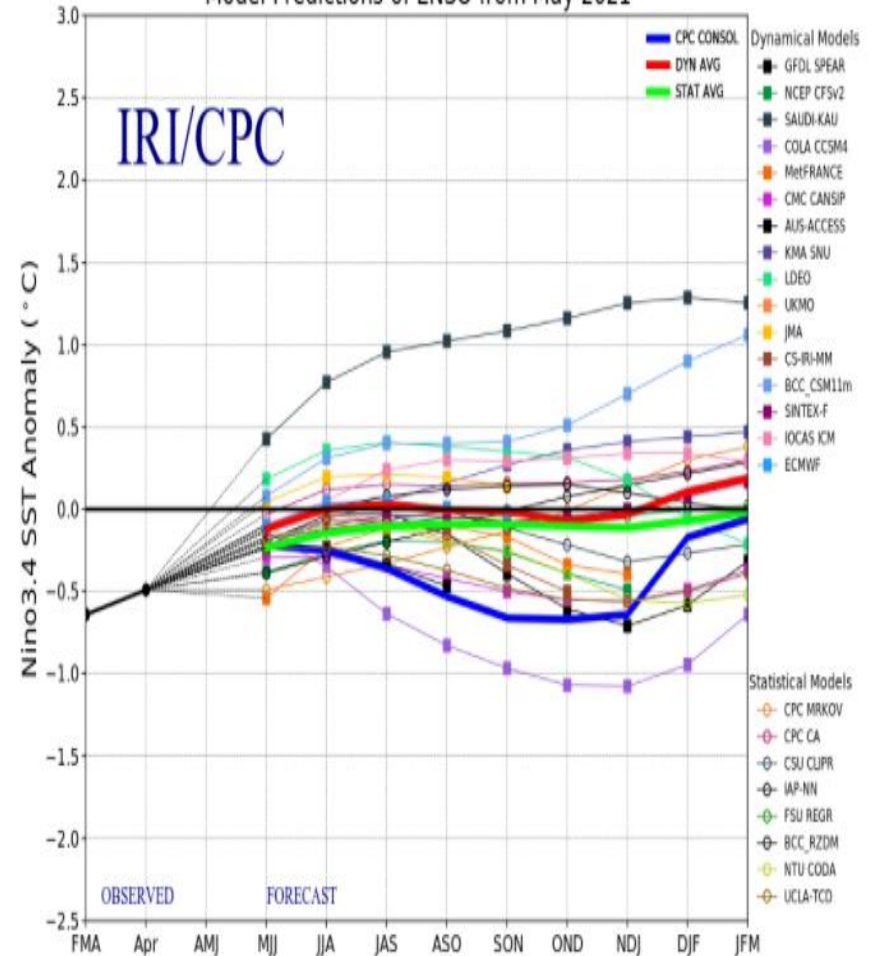
ENSO just returned to neutral status; and is expected to remain in neutral into this coming winter.

Mid-May 2021 IRI/CPC Model-Based Probabilistic ENSO Forecasts

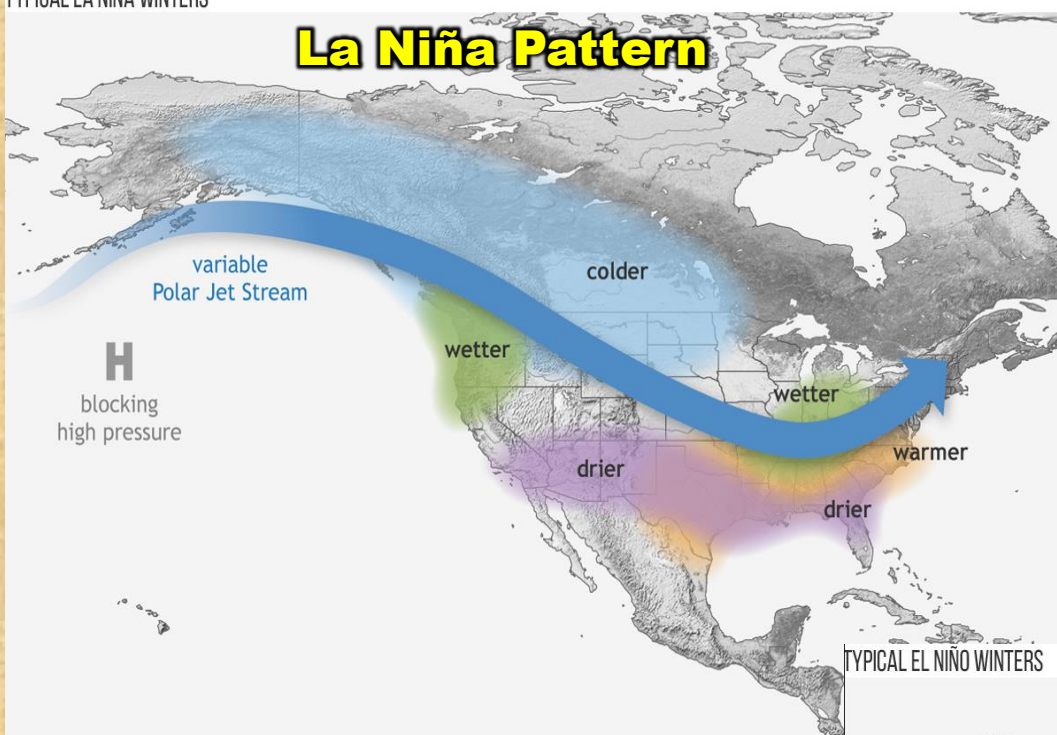
ENSO state based on NINO3.4 SST Anomaly
Neutral ENSO: -0.5°C to 0.5°C



Model Predictions of ENSO from May 2021

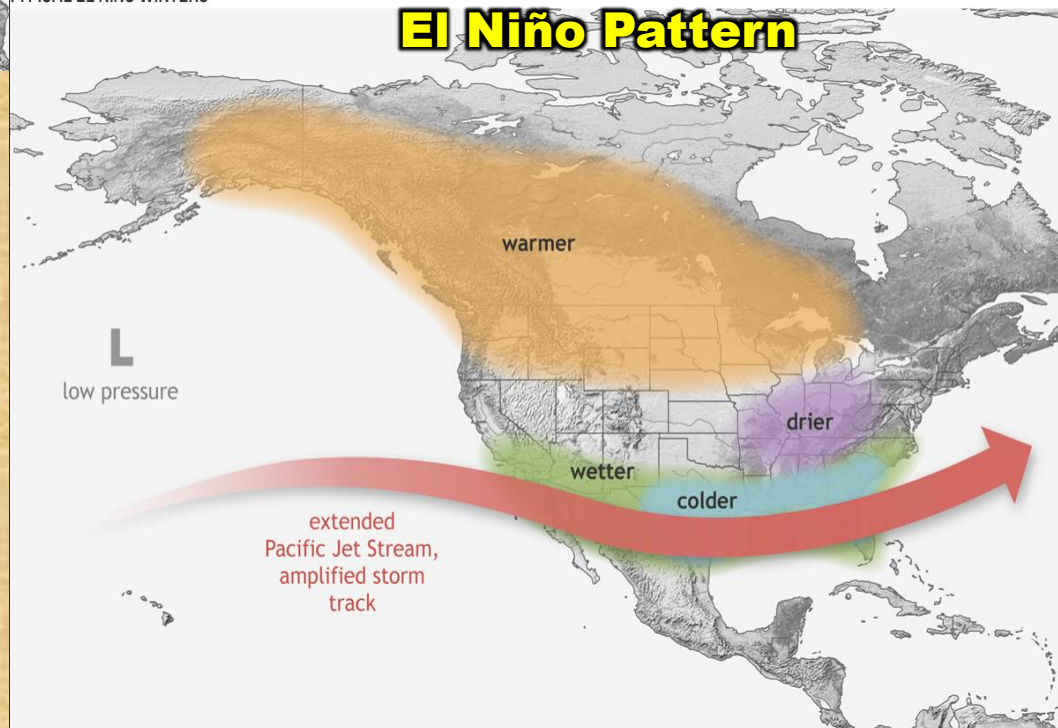


La Niña Pattern



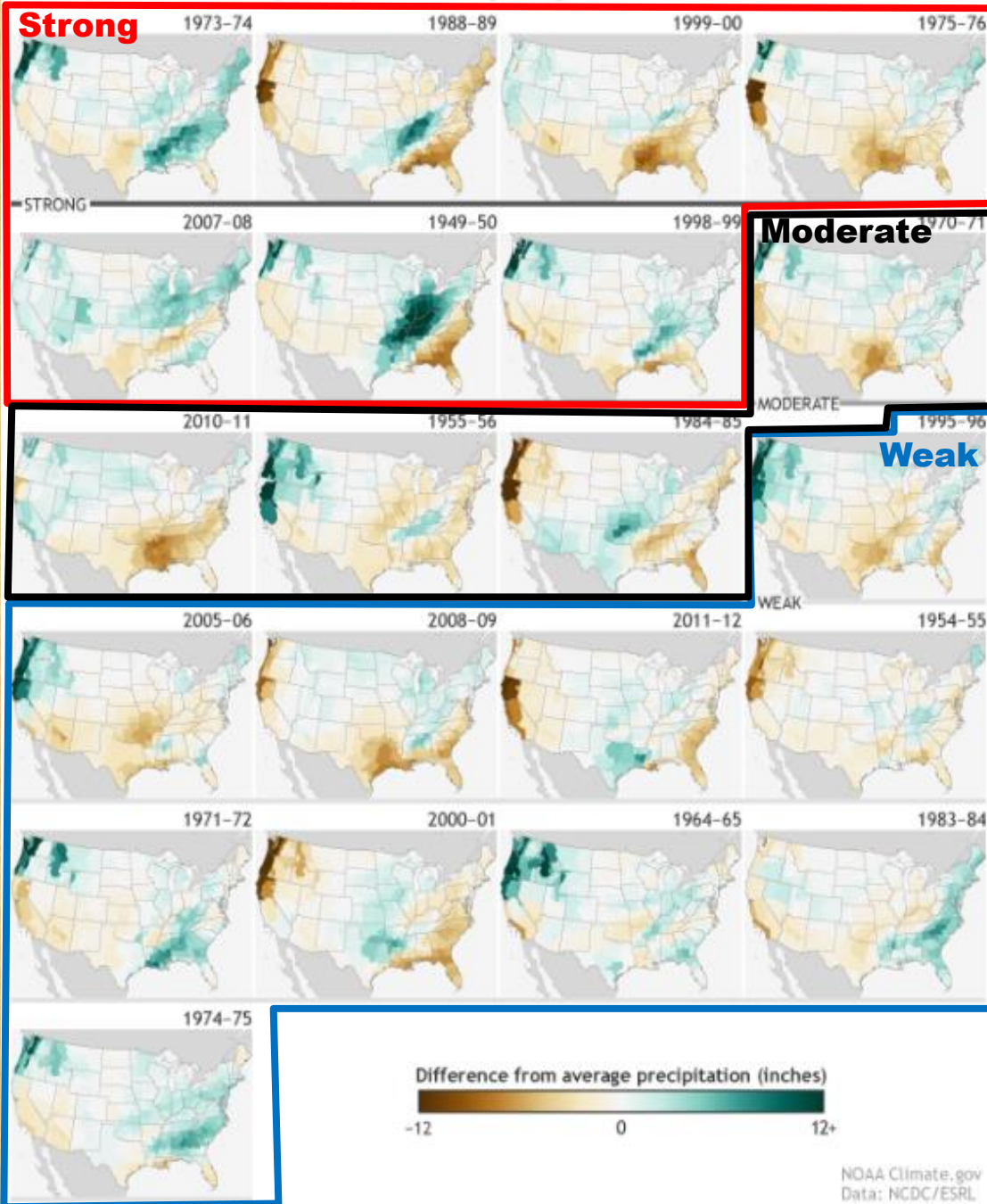
We are heading into a weak to moderate La Niña for much of this winter. As the pattern shows, a ridge of high pressure tends to build off the west coast of the U.S., blocking most of our Pacific winter storm systems. These storms tend to end up moving across the northern Plains and down to the southeastern part of the country. Of course it is important to remember that these patterns are only what typically happens and are not guaranteed to occur.

El Niño Pattern



With El Niño, we often see the opposite pattern where the eastern Pacific ridge of high pressure is often weak or non-existent, allowing winter storms to sweep across the southern U.S. This typically will give the southwestern U.S. above normal precipitation.

Winter (December-February) precipitation during strong, moderate, and weak La Niñas since 1950

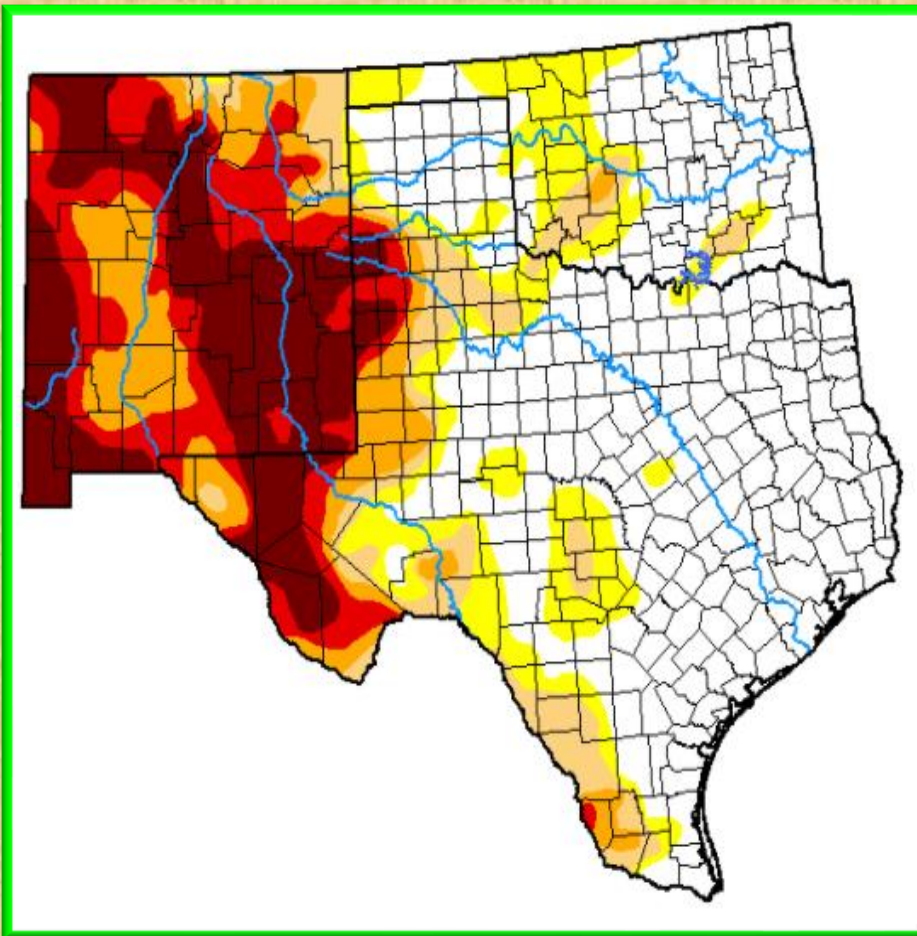


Examples of the numerous La Niña winters since 1950. These maps depict the departure from normal precipitation amounts for a winter.

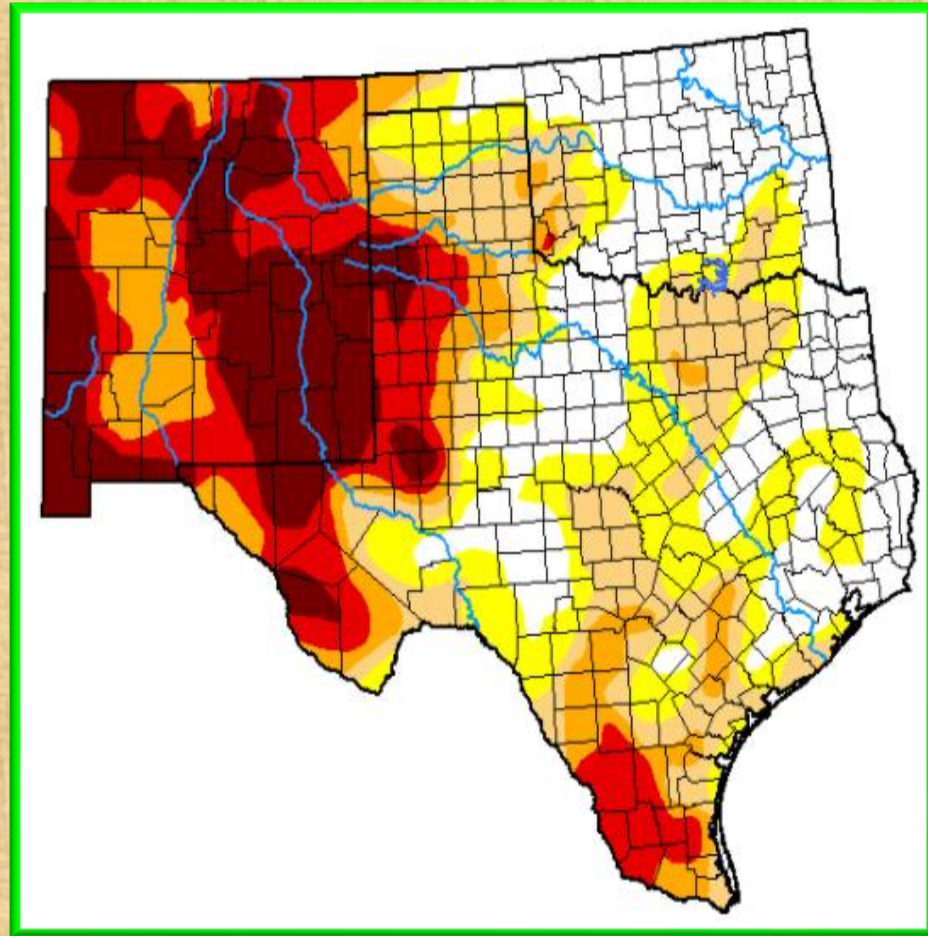
Current drought conditions and 3 month change

- Abnormally Dry – D0
- Moderate Drought – D1
- Severe Drought – D2
- Extreme Drought – D3
- Exceptional – D4

May 25, 2021



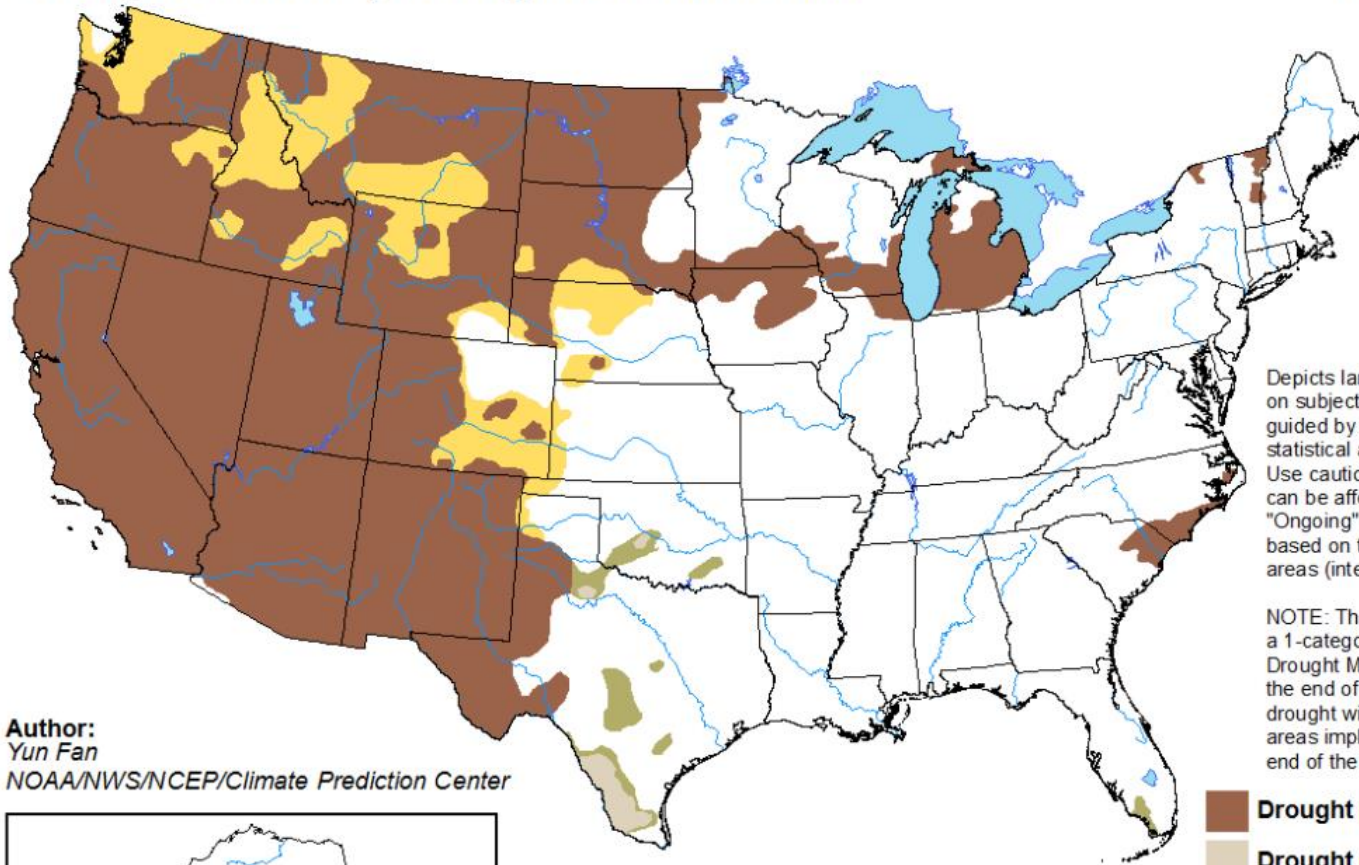
February 23, 2021



U.S. Seasonal Drought Outlook

Drought Tendency During the Valid Period



Valid for May 20 - August 31, 2021
Released May 20

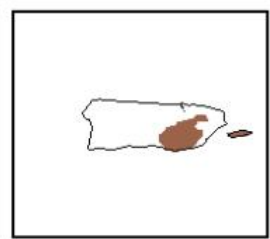
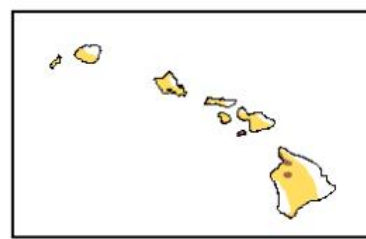
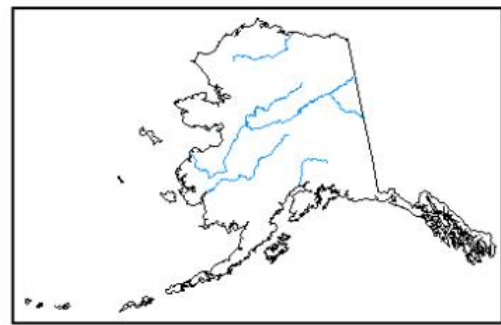


Depicts large-scale trends based on subjectively derived probabilities guided by short- and long-range statistical and dynamical forecasts. Use caution for applications that can be affected by short lived events. "Ongoing" drought areas are based on the U.S. Drought Monitor areas (intensities of D1 to D4).

NOTE: The tan areas imply at least a 1-category improvement in the Drought Monitor intensity levels by the end of the period, although drought will remain. The green areas imply drought removal by the end of the period (D0 or none).

Author:
Yun Fan
NOAA/NWS/NCEP/Climate Prediction Center

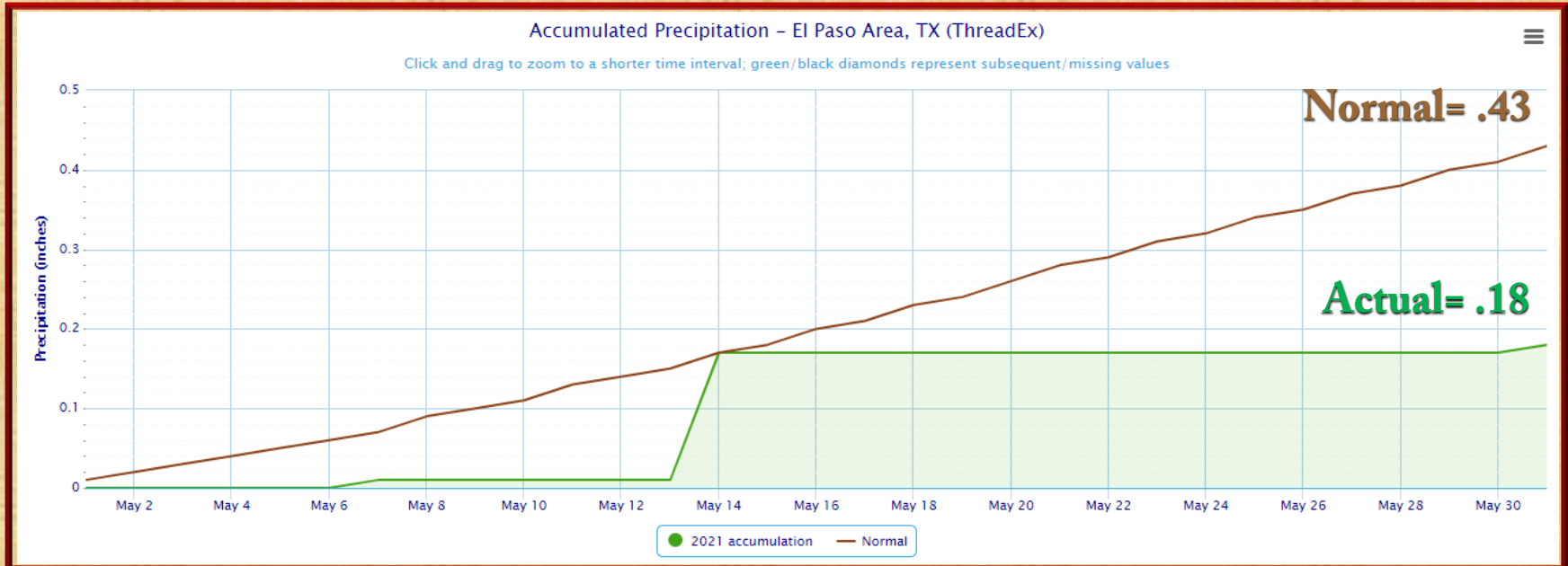
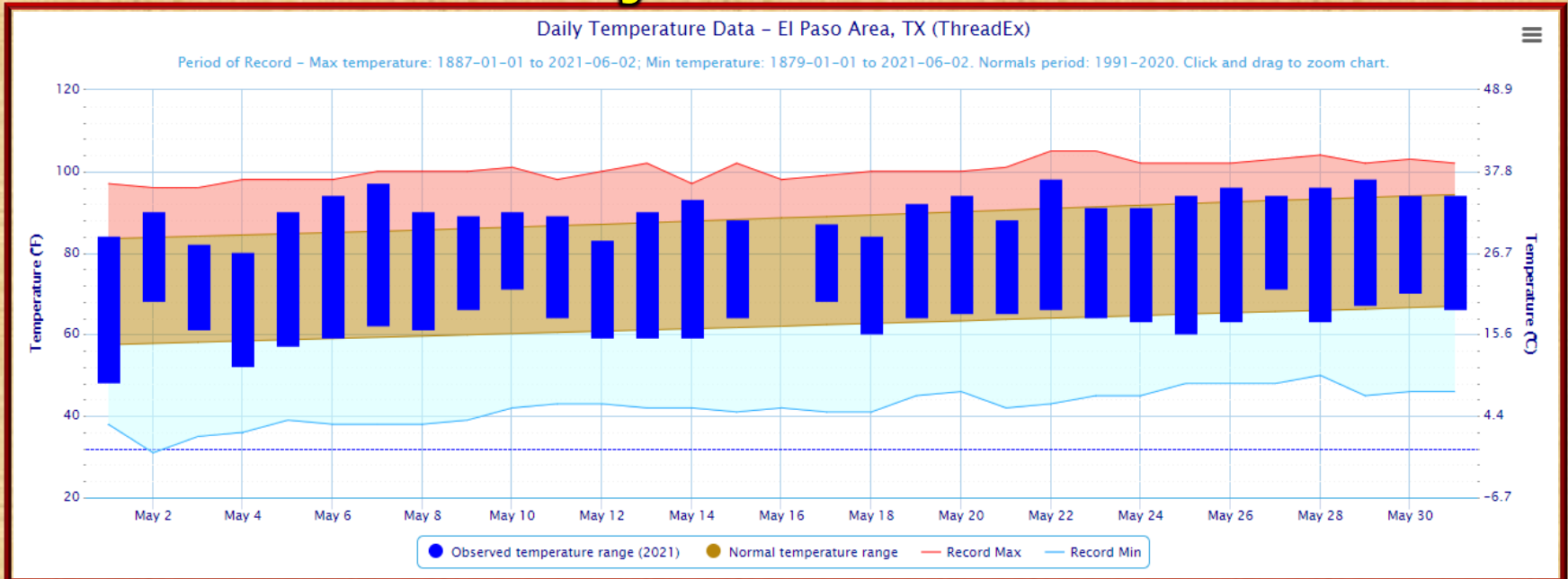
-  Drought persists
-  Drought remains but improves
-  Drought removal likely
-  Drought development likely



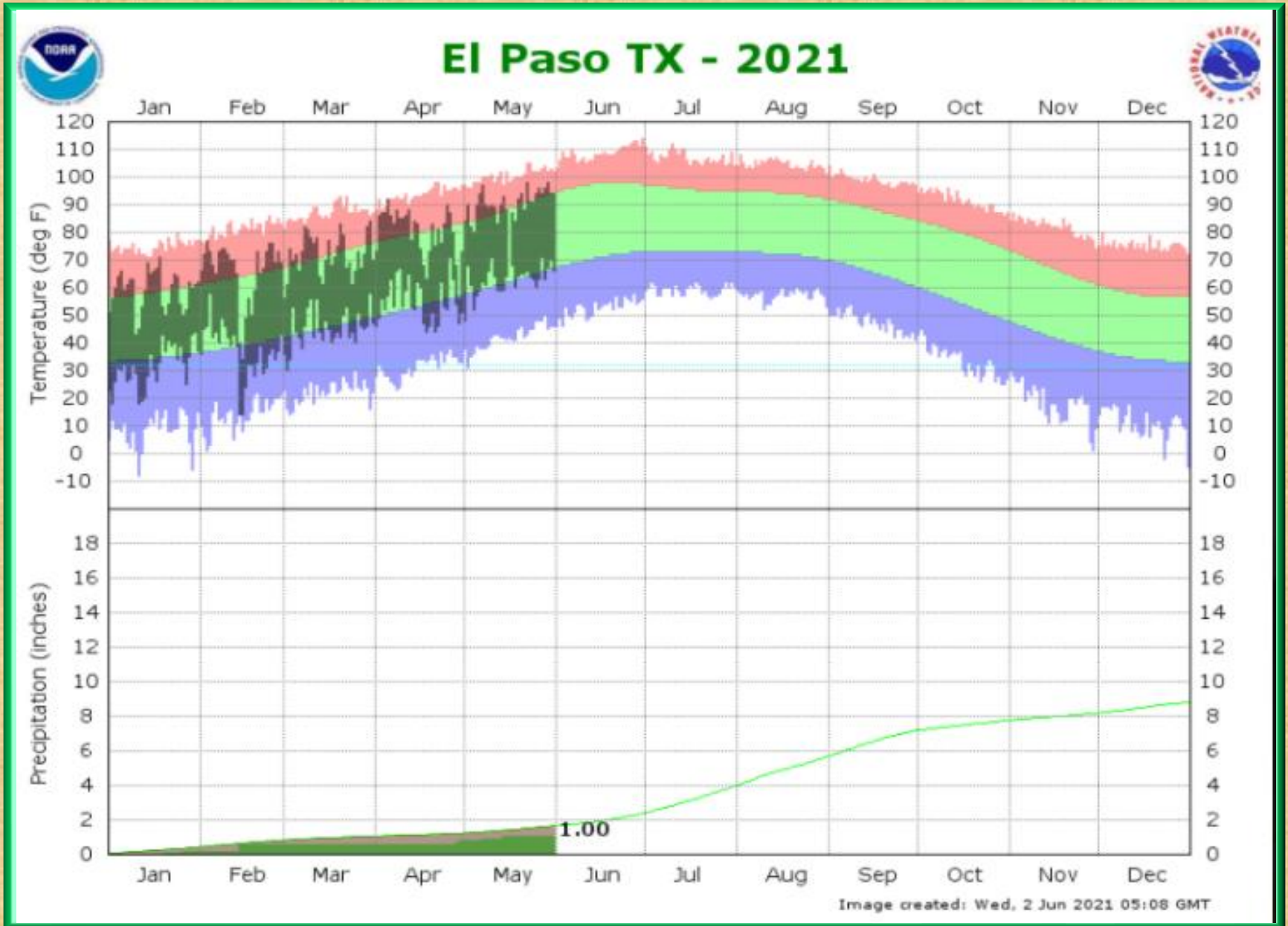
<http://go.usa.gov/3eZ73>

Temperature and precipitation data for May 2021 in El Paso

○ = record



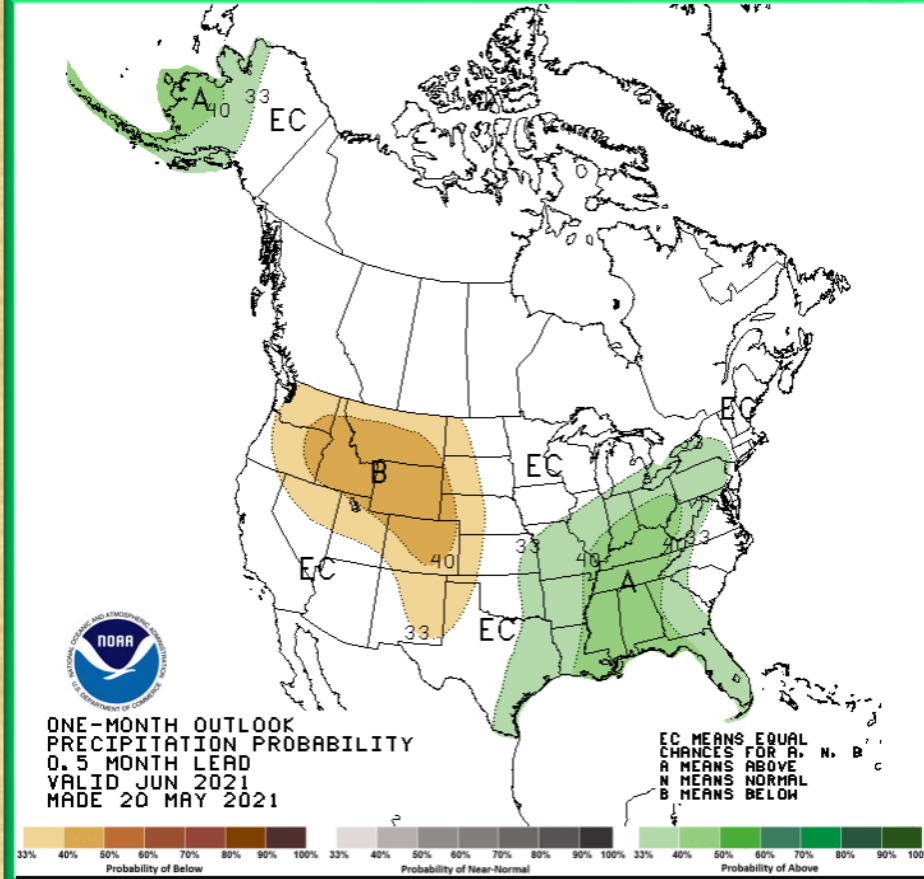
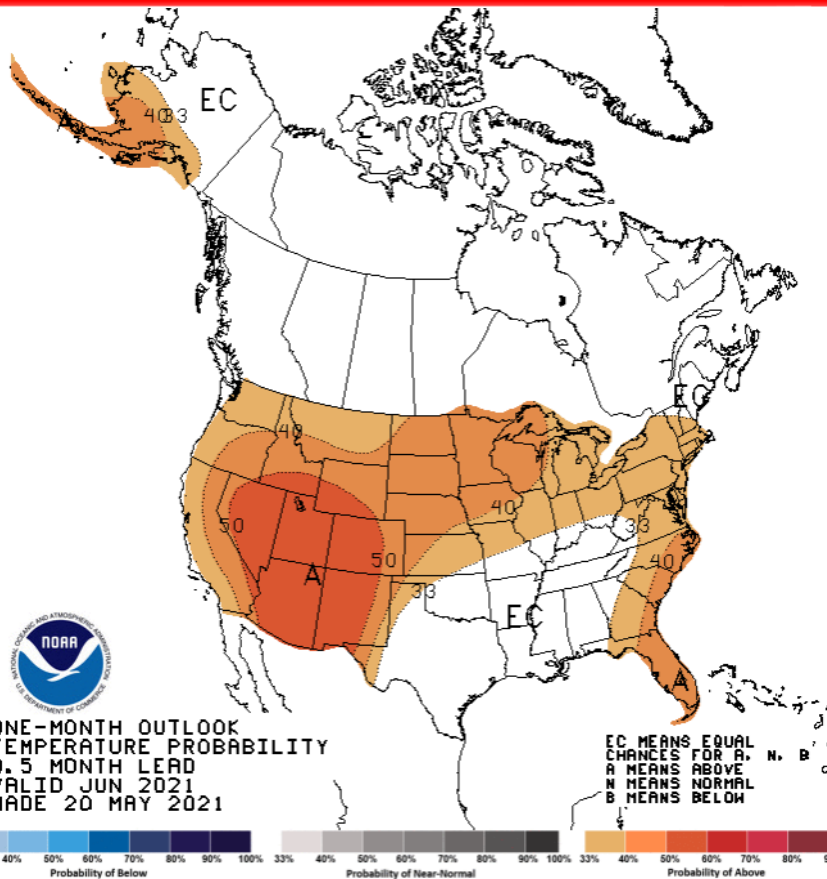
2021: Temperature and Precipitation YTD Data for El Paso



Temperature and precipitation outlook for June 2021

Temperature

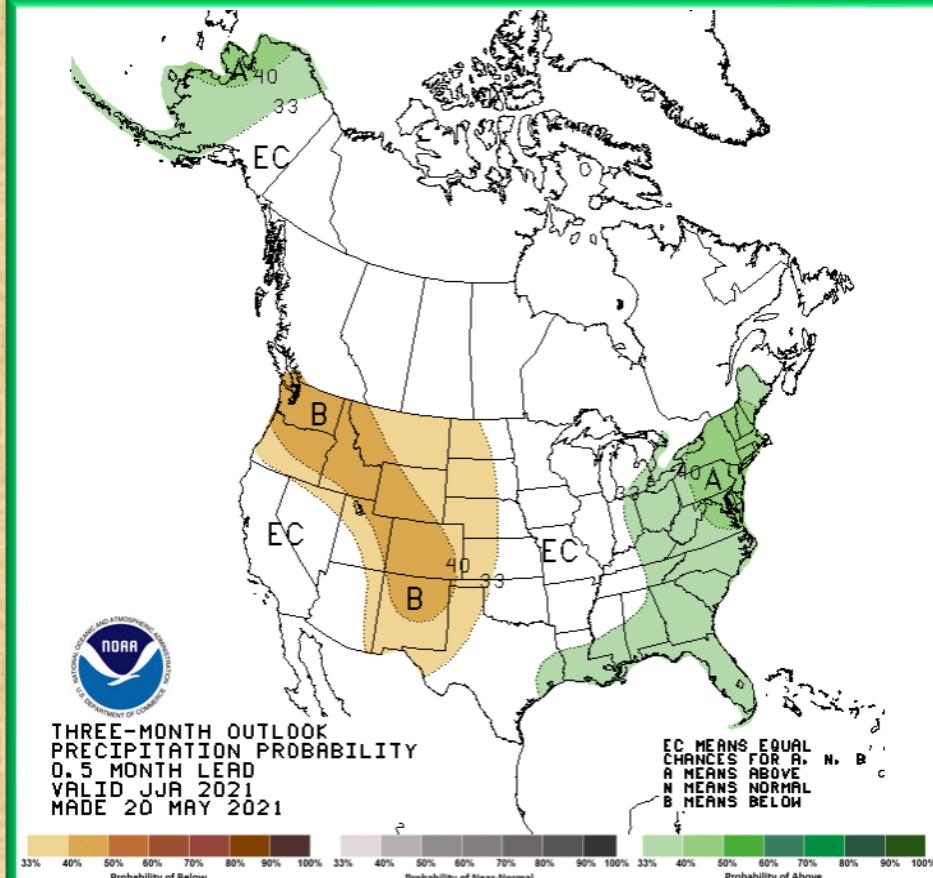
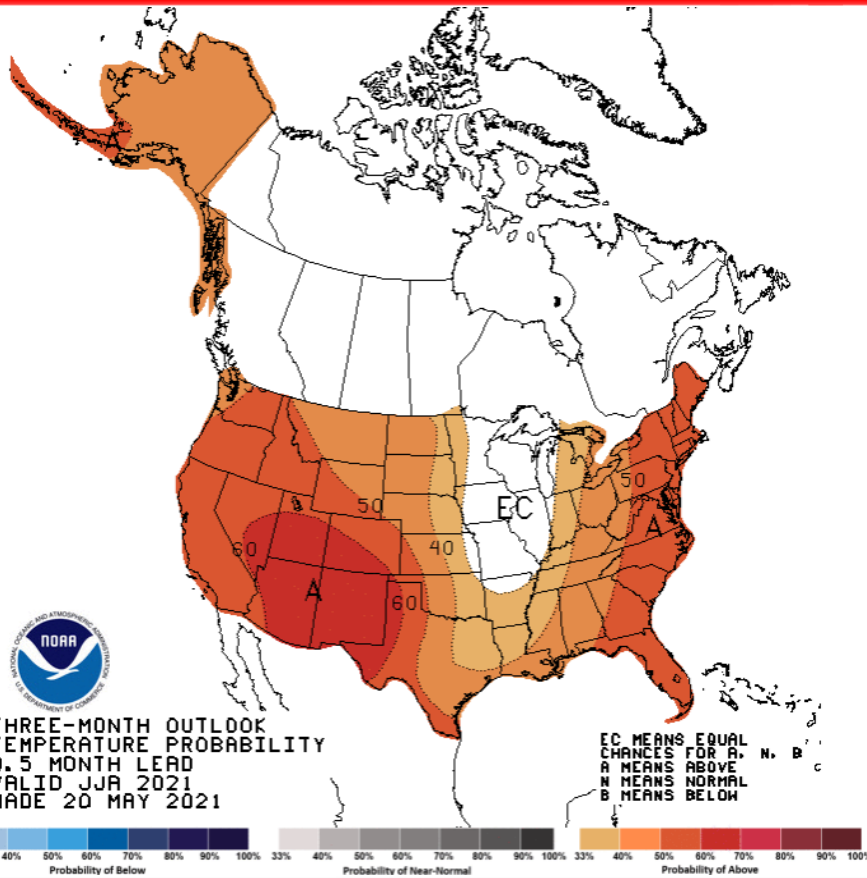
Precipitation



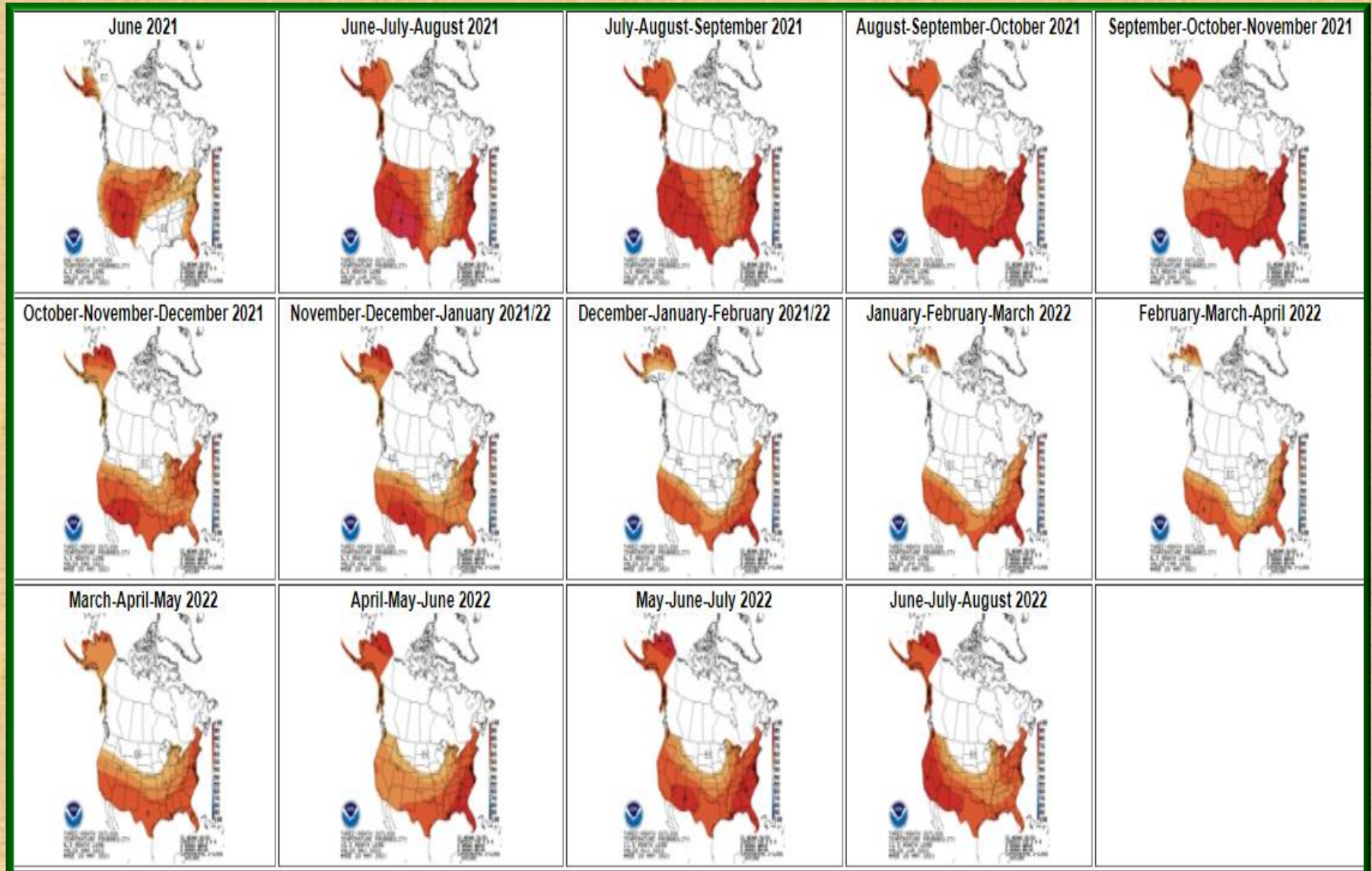
Temperature and precipitation outlook For June-August 2021

Temperature

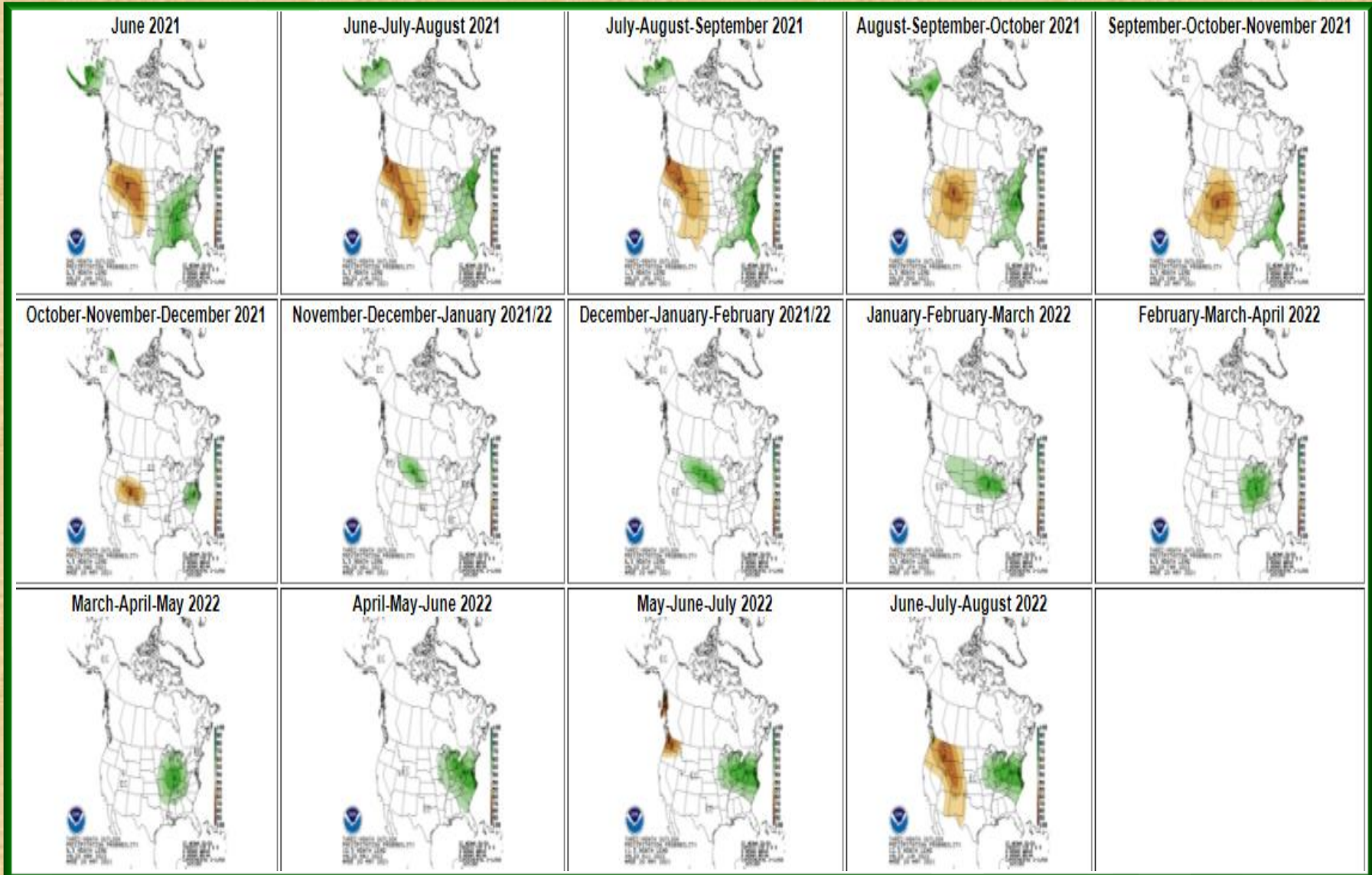
Precipitation



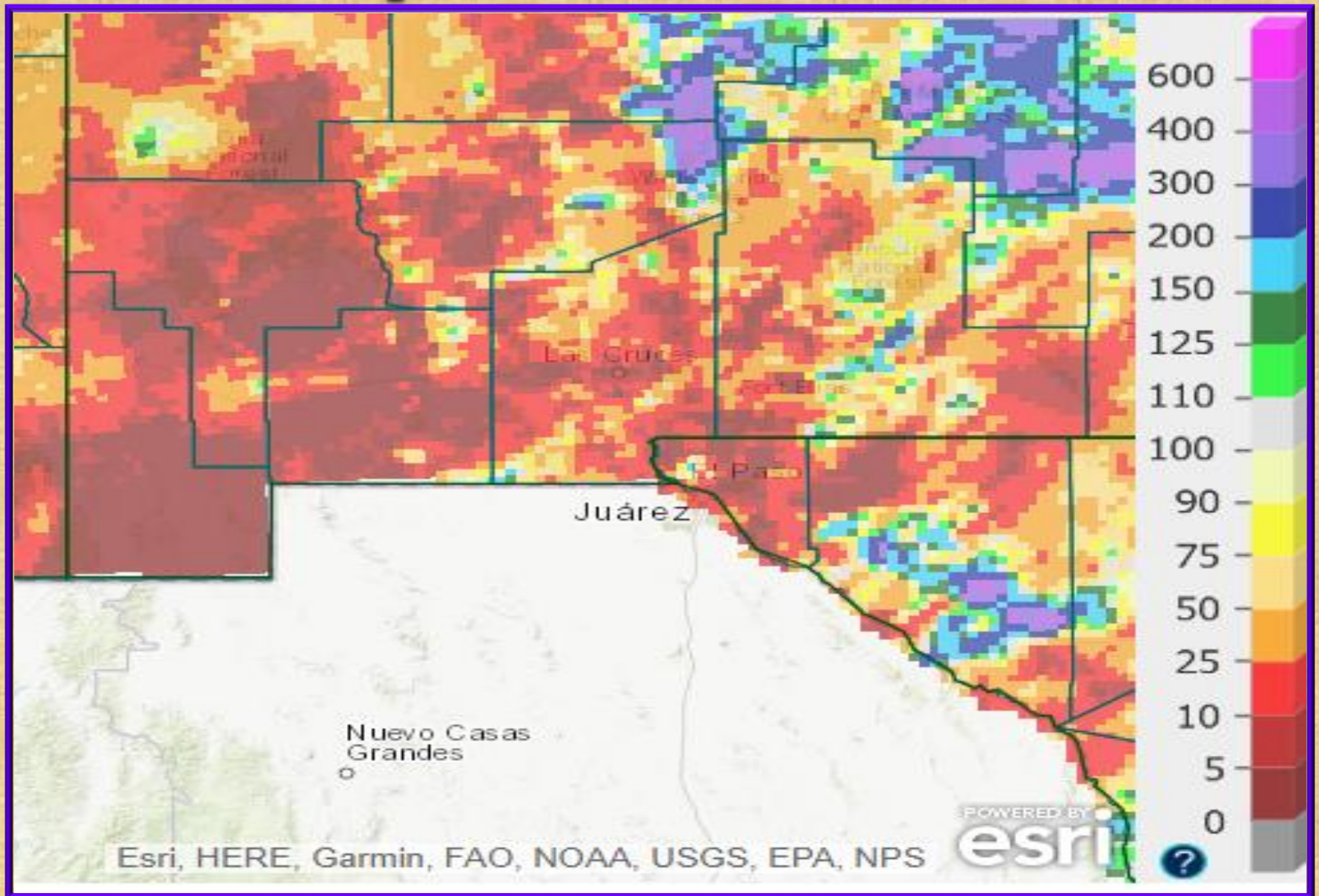
Temperature Outlook Through August 2022



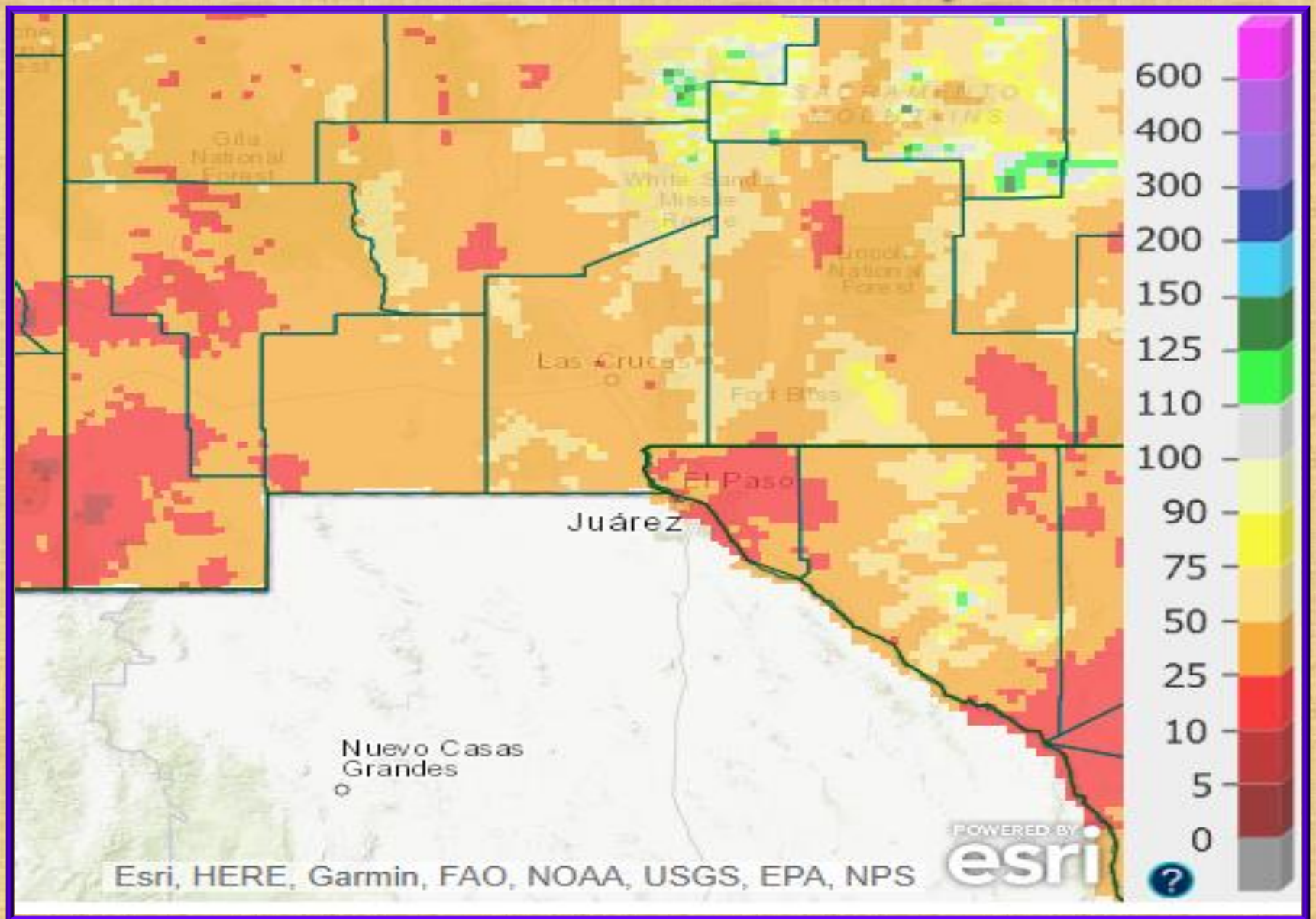
Precipitation Outlook Through August 2022



May 2021 radar rainfall estimate percent of normal



Radar rainfall estimate percent of normal for the Water Year (Oct 1 – May 31)

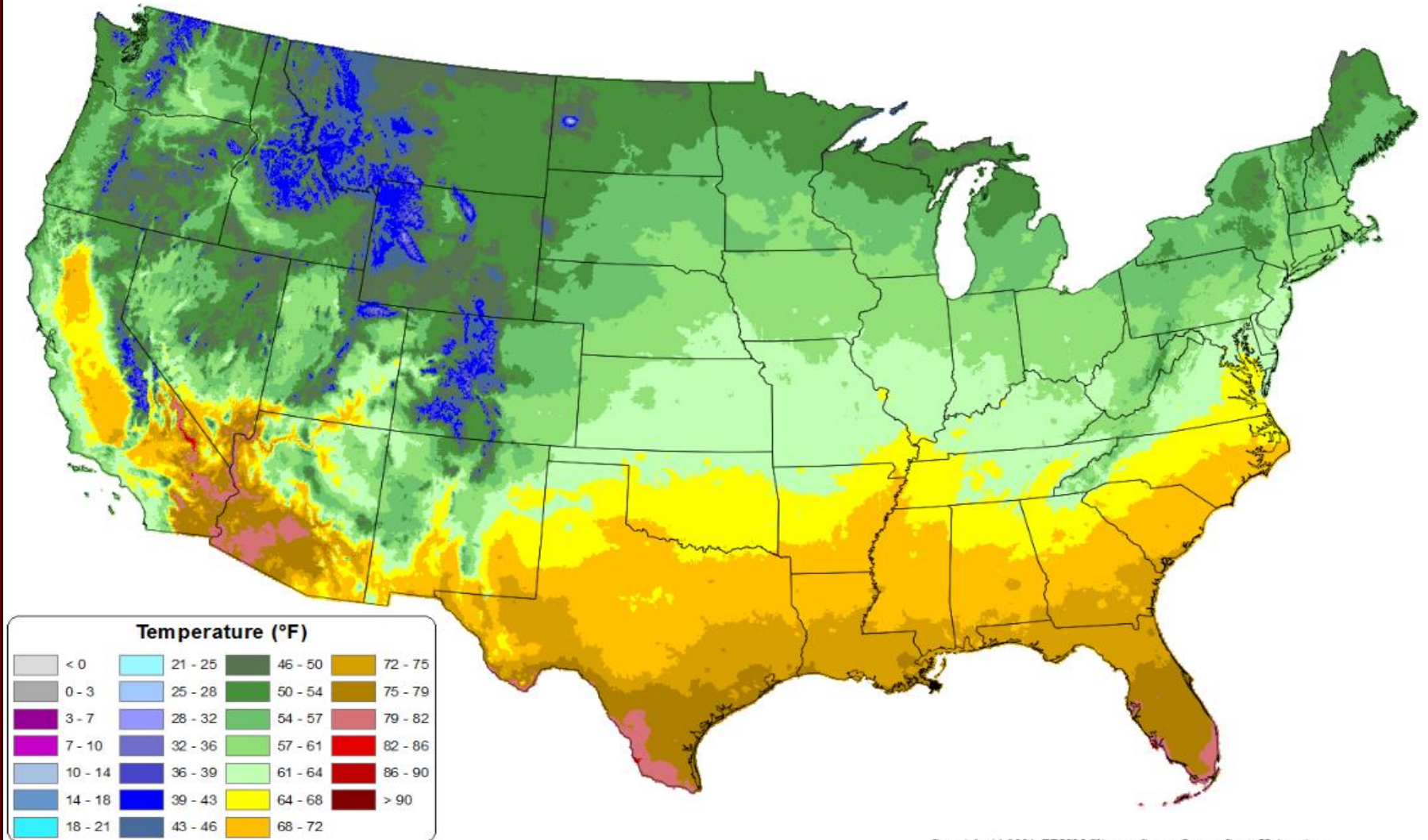


Average Daily Mean Temperature for May 2021

Average Daily Mean Temperature: May 2021

Period ending 7 AM EST 31 May 2021

(Map created 02 Jun 2021)

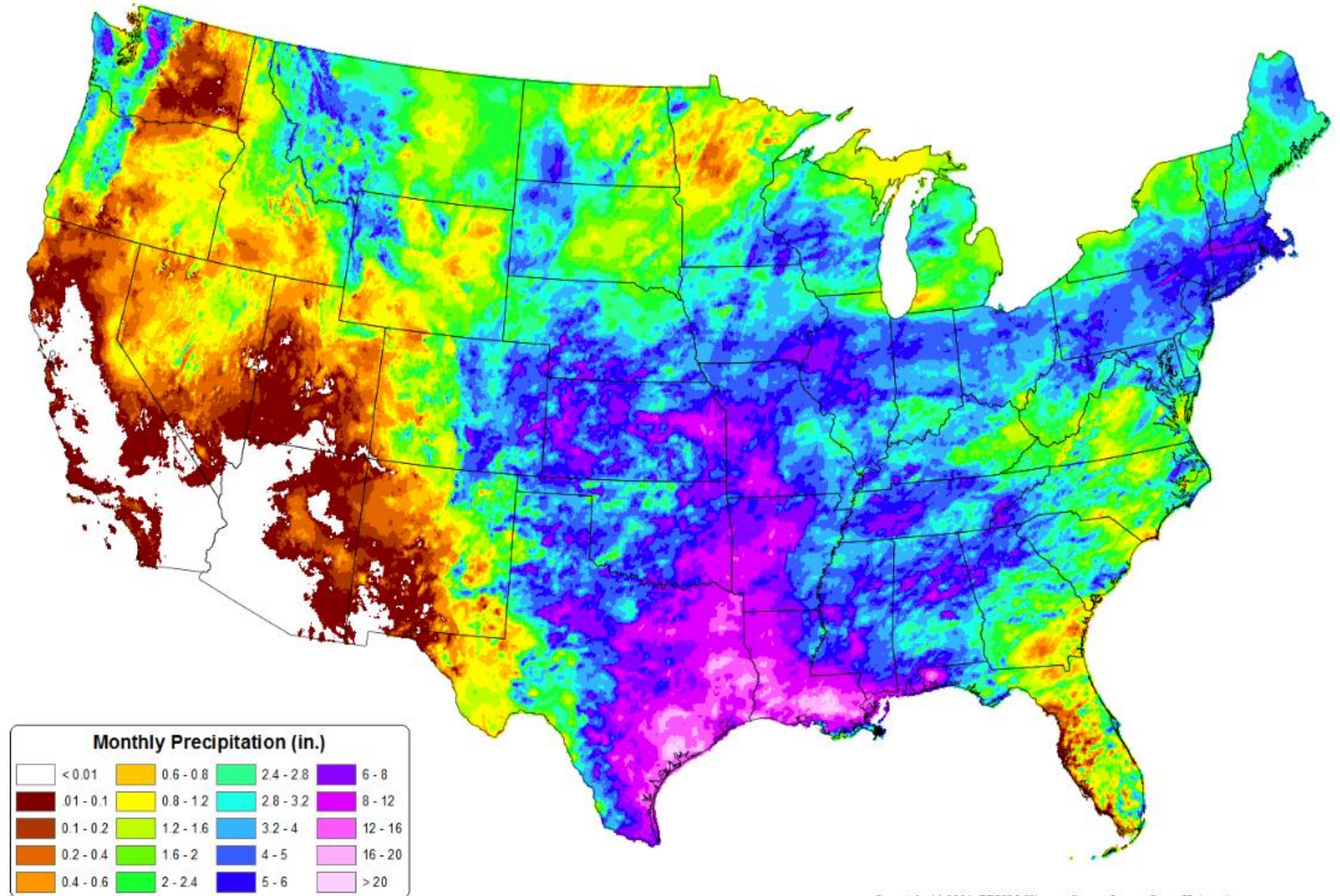


Total Precipitation for May 2021

Total Precipitation: May 2021

Period ending 31 May 2021

(Map created 02 Jun 2021)



Selected Weather Reports May2021

Date/Time	Location (County)	Event
MAY 2 915 PM	SAN AUGUSTIN PASS-DONA ANA	67 MPH WIND GUST
MAY 2 640 PM	HACHITA 15SW-HIDALGO	55 MPH WIND GUST
MAY 2 855 PM	WSMR MAIN POST-DONA ANA	52 MPH WIND GUST
MAY 2 401 PM	EL PASO 6NE-EL PASO	52 MPH WIND GUST
MAY 2 206 PM	SANTA TERESA NWS-DONA ANA	48 MPH WIND GUST
MAY 2 400 PM	ROAD FORKS 4NE-HIDALGO	48 MPH WIND GUST
MAY 2 235 PM	GRANT CO ARPT-GRANT	47 MPH WIND GUST
MAY 2 355 PM	LAS CRUCES ARPT-DONA ANAN	46 MPH WIND GUST
MAY 2 301 PM	MAYHILL-OTERO	45 MPH WIND GUST
MAY 2 401 PM	EL PASO INTL ARPT-EL PASO	45 MPH WIND GUST
MAY 2 328 PM	HIGH ROLLS-OTERO	44 MPH WIND GUST
MAY 2 500 PM	DEMING 2SE-LUNA	41 MPH WIND GUST

Selected Weather Reports May 2021

Date/Time	Location (County)	Event
MAY 13 720 PM	CONDRON FIELD-DONA ANA	47 MPH WIND GUST
MAY 13 605 PM	SANTA TERESA NWS-DONA ANA	44 MPH WIND GUST
MAY 13 616 PM	LA UNION-DONA ANA	41 MPH WIND GUST
MAY 13 606 PM	EL PASO INTL ARPT-EL PAS	41 MPH WIND GUST
MAY 13 700 PM	LAS CRUCES WEST MESA-DONA ANA	41 MPH WIND GUST

Special Features

<http://www.srh.noaa.gov/epz/?n=elpwindrosedata>

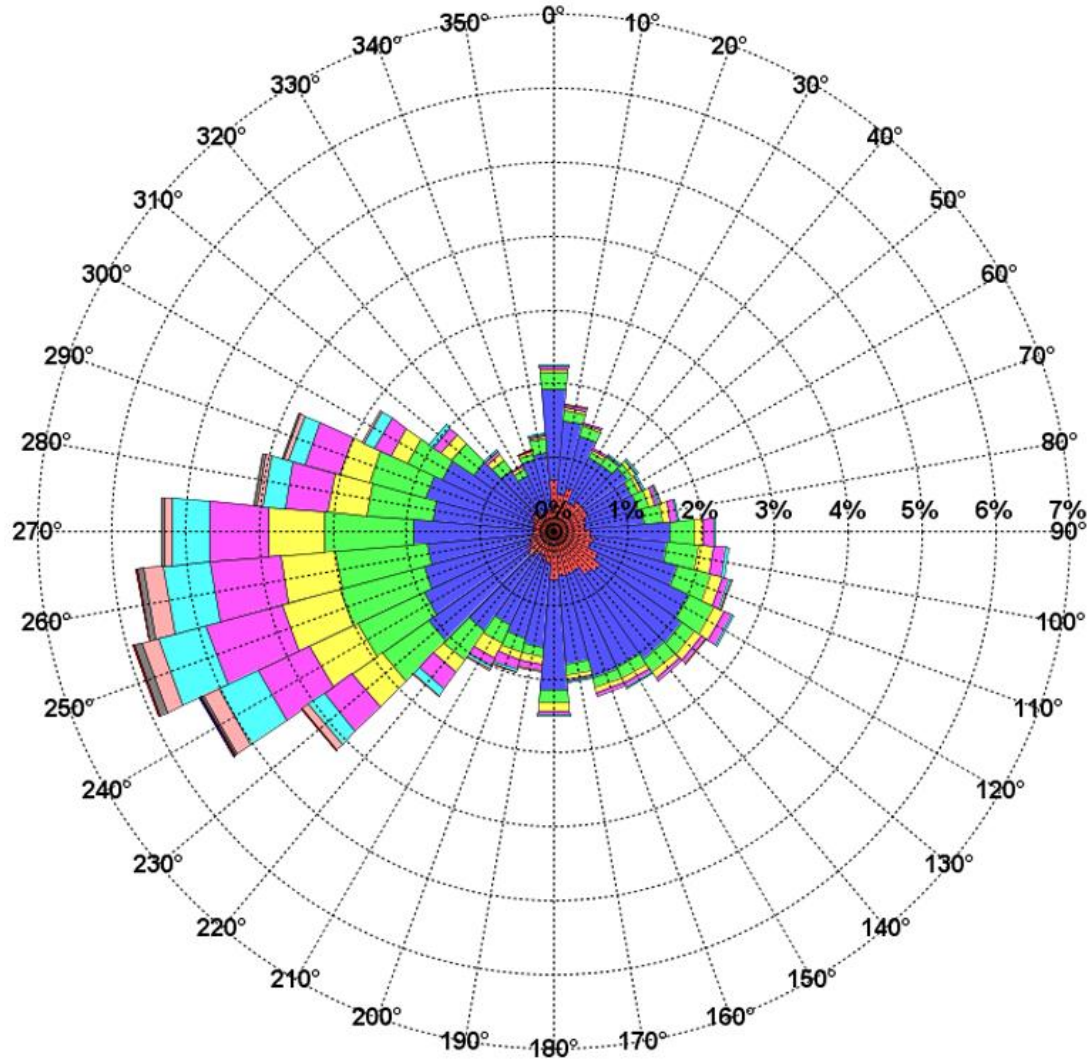
Month: MAY
Calm: 6.44%
Variable: 2.66%

WindRose - KELP - EL PASO INTL

% Frequency of Wind Speed from a Direction

POR:19730101-20140602

- 1 - 5 mph
- 6 - 10 mph
- 11 - 16 mph
- 17 - 22 mph
- 23 - 28 mph
- 29 - 33 mph
- 34 - 39 mph
- 40 - 45 mph
- 46 - 51 mph
- 52 - 56 mph
- 57 mph or more



Local forecast by "City, St" or ZIP code
 Enter location ...
[Location Help](#)

Heavy Rain and Flash Flooding Possible Over Parts of the Eastern United States
 Heavy rainfall is expected over portions of the eastern United States through Thursday. Flooding and flash flooding will be possible in some areas. Click the "Read More" link for excessive rainfall forecasts from the Weather Prediction Center. [Read More >](#)

Customize Your Weather.gov

City, ST

Enter Your City, ST or ZIP Code

Remember Me

[Privacy Policy](#)

NWS El Paso
[Weather.gov > El Paso, TX](#)

El Paso, TX
 Weather Forecast Office

Current Hazards Current Conditions Radar Forecasts Rivers and Lakes Climate and Past Weather **Local Programs**

Today

Wednesday
 Warmer with a Few Afternoon Storms
 Weather Forecast Office
 El Paso, TX
 September 27, 2016 4:43 PM

Local forecast by "City, St" or ZIP code
 Enter location ...
[Location Help](#)

Heavy rain expected across the Mid-Atlantic region and central Appalachians.
 Heavy rainfall is possible over portions of the eastern United States today, with the highest risk across the Mid-Atlantic and central Appalachians. Click the "Read More" link for excessive rainfall forecasts from the Weather Prediction Center. Afternoon showers and thunderstorms are possible over portions of the Southwest and southern Rockies through Friday. [Read More >](#)

Customize Your Weather.gov

City, ST

Enter Your City, ST or ZIP Code

Remember Me

[Privacy Policy](#)

Monthly Weather Digest
[Weather.gov > El Paso, TX > Monthly Weather Digest](#)

El Paso, TX
 Weather Forecast Office

Current Hazards Current Conditions Radar Forecasts Rivers and Lakes Climate and Past Weather **Local Programs**

Southern New Mexico and Far West Texas has a variety of weather from month to month. Conditions can range from extreme drought, to heavy flooding rains, from record breaking heat to bone chilling cold. Below you will find past weather highlights from the area that the NWS office in Santa Teresa NM covers. This area includes the following counties in New Mexico: Hudspeth, Grant, Luna, Sierra, Doña Ana and Otero and the following counties in Texas: El Paso and Hudspeth.

weather.gov/epz

Don't Forget-Current and past issues of our Weather Digest are available on our website at <http://www.weather.gov/epz/>

Just click on "Local Programs>Weather Digest", then choose which month's Digest to view. Also, though discontinued, don't forget to check out our back issues of Southwest Weather Bulletin.

WEATHER DIGESTS AND BULLETINS	
Weather Digest	Southwest Weather Bulletins
January	2005 Spring Fall
February	2006 Spring Fall
March	2007 Spring Fall
April	2008 Spring Fall
May	2009 Spring Fall
June	2010 Spring Fall
July	2011 Spring Fall
August	2012 Spring Fall
September	2013 Spring Fall
October	2014 Spring Fall
November	
December	