

# August 2017 Weather Digest





# August 2017 Weather Summary

August turned out to be a fairly typical monsoon month, with most areas receiving near normal to above normal rainfall. The monsoon was active from the beginning of the month up until around the last few days of the month, when high pressure over the Great Basin reversed the flow and likely ended the monsoon pattern for the summer. This doesn't mean we can't see brief tropical moisture surges into the area in September, but the longer lasting large scale pattern shows the season wrapping up. The monsoon rains did cause some flooding problems, most notably near Dona Ana, New Mexico on the 13<sup>th</sup>, in the Socorro, Texas area on the 15<sup>th</sup>, and over downtown El Paso on the 25<sup>th</sup>. Two to four inches fell in a short time at these locations. A few severe storms also hit on the 13<sup>th</sup>, with some large hail reported at several sites in Dona Ana County. Interestingly, by comparison Hurricane Harvey hit the Houston area toward the end of the month. The NWS Houston office (Dickinson) received as much rain in four days from August 26-29, 41.12", as El Paso International Airport has from Sep 6, 2012 to the end of August 2017 (1814 days).

Temperatures for the month were around normal. This should be the case; when rainfall is around normal, summer temperatures will typically be around normal too. If rainfall is below normal, then temperatures are usually above normal. Likewise, when rainfall is well above normal, temperatures will likely be below normal.

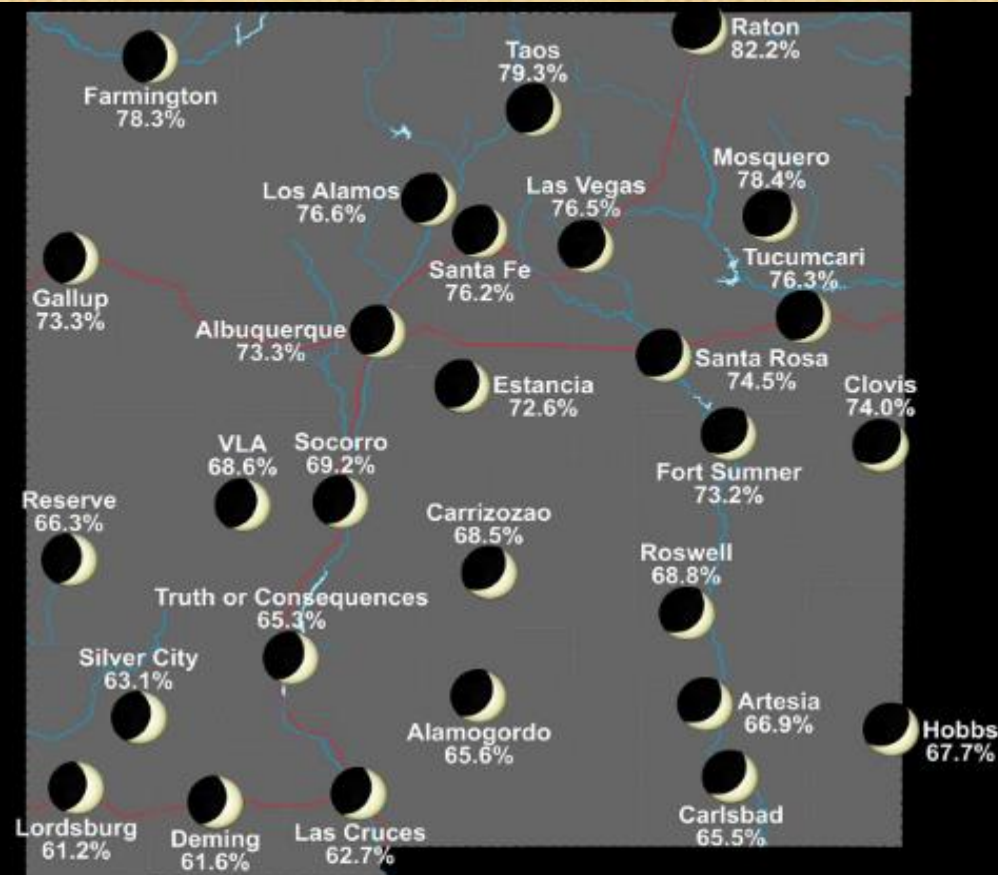
# **August 2017 Weather Summary (cont'd)**

**Looking ahead to September, the fall equinox will occur on the 22<sup>nd</sup>. The hours of sunlight begin decreasing more noticeably in September, as we approach the fall season. The monthly outlook does not show any strong tendencies, therefore we will have equal chances of above or below normal for both temperature and precipitation. For the 90 day outlook (fall), our area is showing a pretty high chance of above normal temperatures, with equal chances of precipitation.**

**The ENSO outlook still remains neutral for the fall and winter, though a weak El Niño is still possible.**



As seen from  
Santa Teresa  
NWS WFO



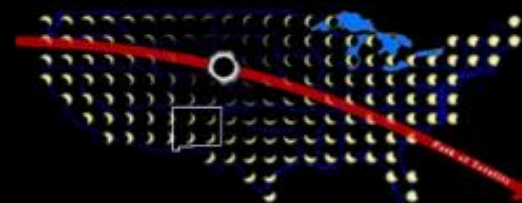
New Mexico

State Boundaries  
Major Rivers  
Intermediate Rivers  
Interstate Highways  
Lakes

0 10 Miles 0 10 Kilometers  
© 2017 NASA



mountain daylight time



# NEW MEXICO SOLAR ECLIPSE AUGUST 21, 2017



**Near Deming Aug 2**



**Near Deming Aug 2**



**Near Deming Aug 2**



**Near Deming Aug 2**



**Rain shaft near Deming Aug 12**



**Rain shaft near Deming Aug 12**



**Near Deming Aug 12**



**Rain shaft near Las Cruces Aug 13**





anna Ball's post

**Flooding near Dona Ana Aug 13**



**Flooding near Dona Ana Aug 13**



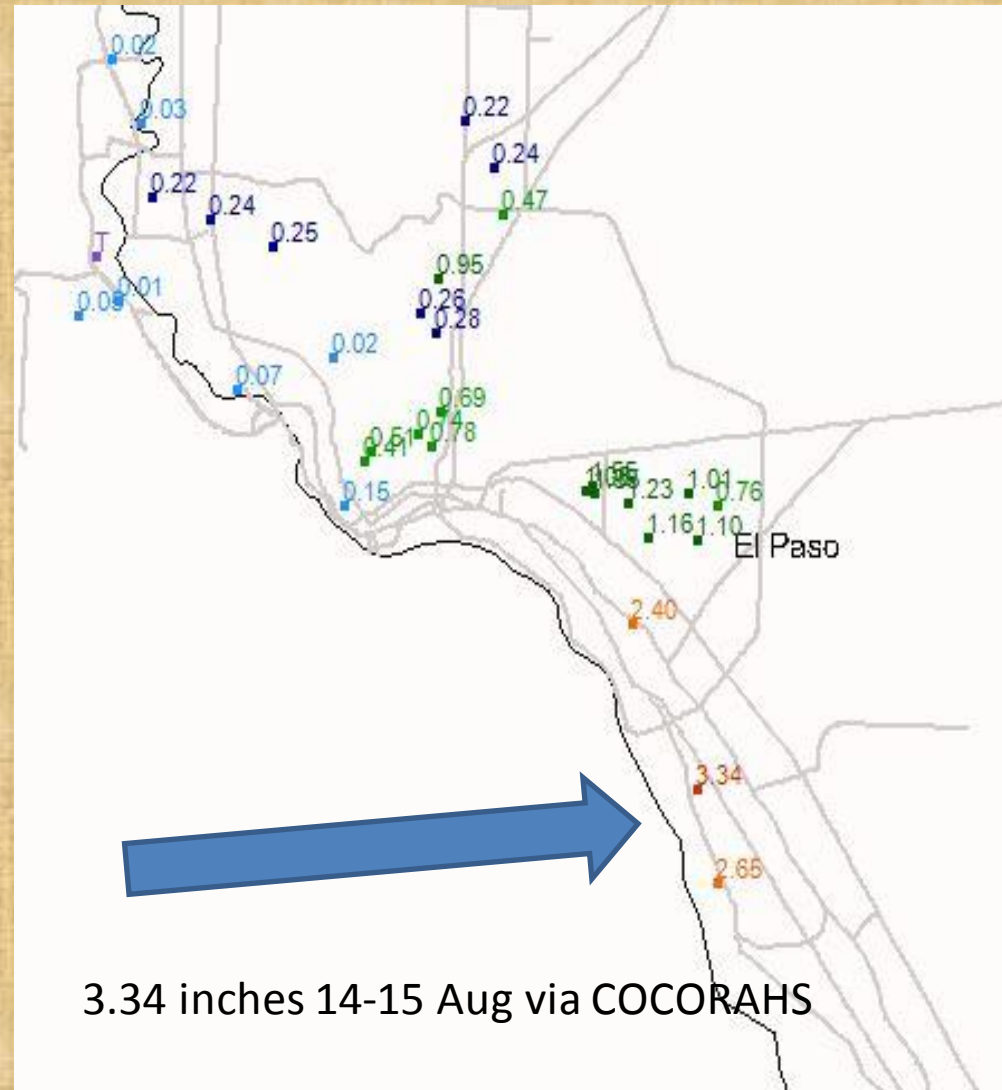
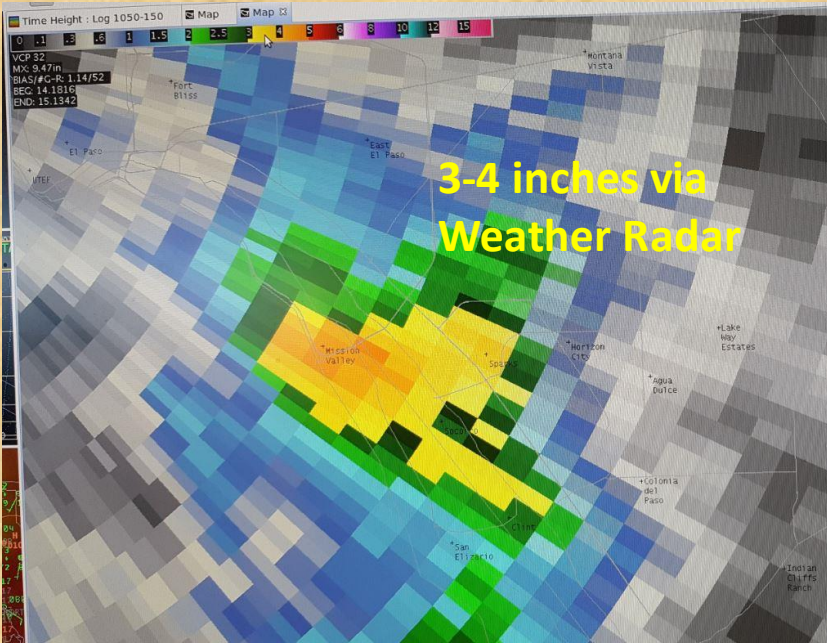
**Flooding near Dona Ana Aug 13**



**Blowing Dust Lordsburg Playa Aug 11**



# Flash Flood Emergency Overnight 14-15 Aug Socorro, Texas





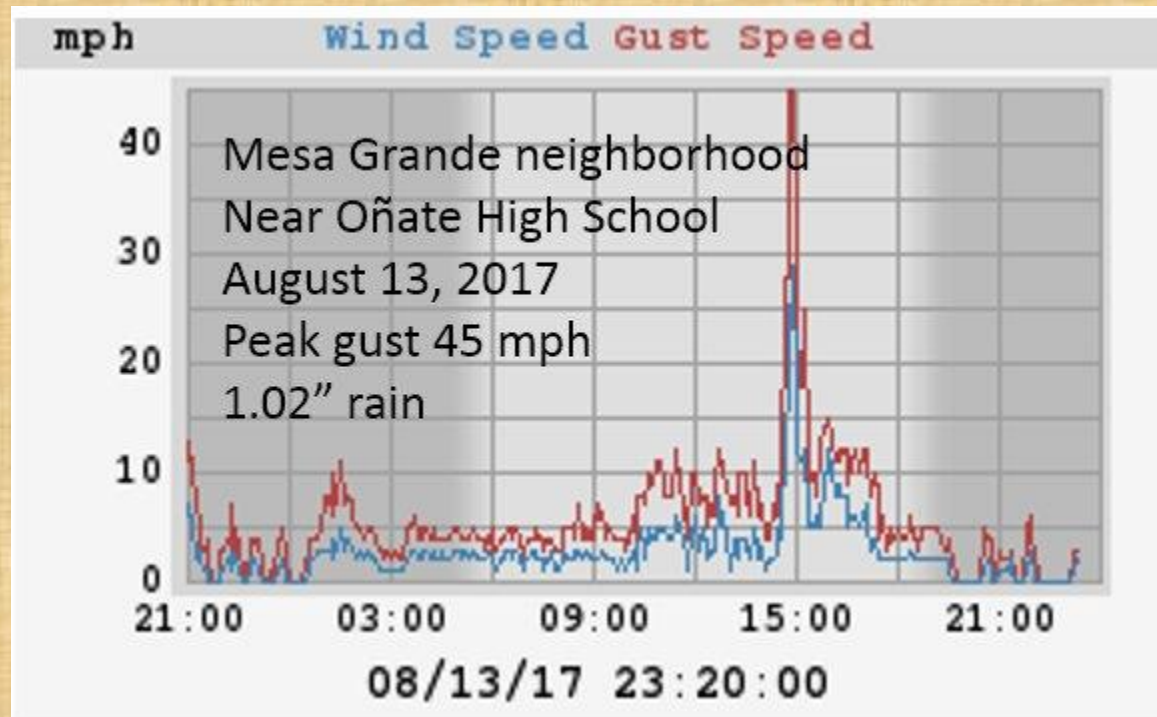
# Flash Flood Warning Mesa and Sun Bowl Drive 7-9 PM 25 Aug (Wet Microburst gust 60 mph)



Traffic at a standstill on I-10 west due to flooding near Porfirio Diaz. Three lanes remain closed. Seek alternate routes.



# Wet Microburst Las Cruces Aug 13





# "FOAM" CLOUDS SURROUND A LOOMING CUMULONIMBUS JUST EAST OF CLOUDCROFT

© Cloudcroftwebcam.com

Tue, Aug 08, 2017 01:21:57PM



# **No Advisory in effect**

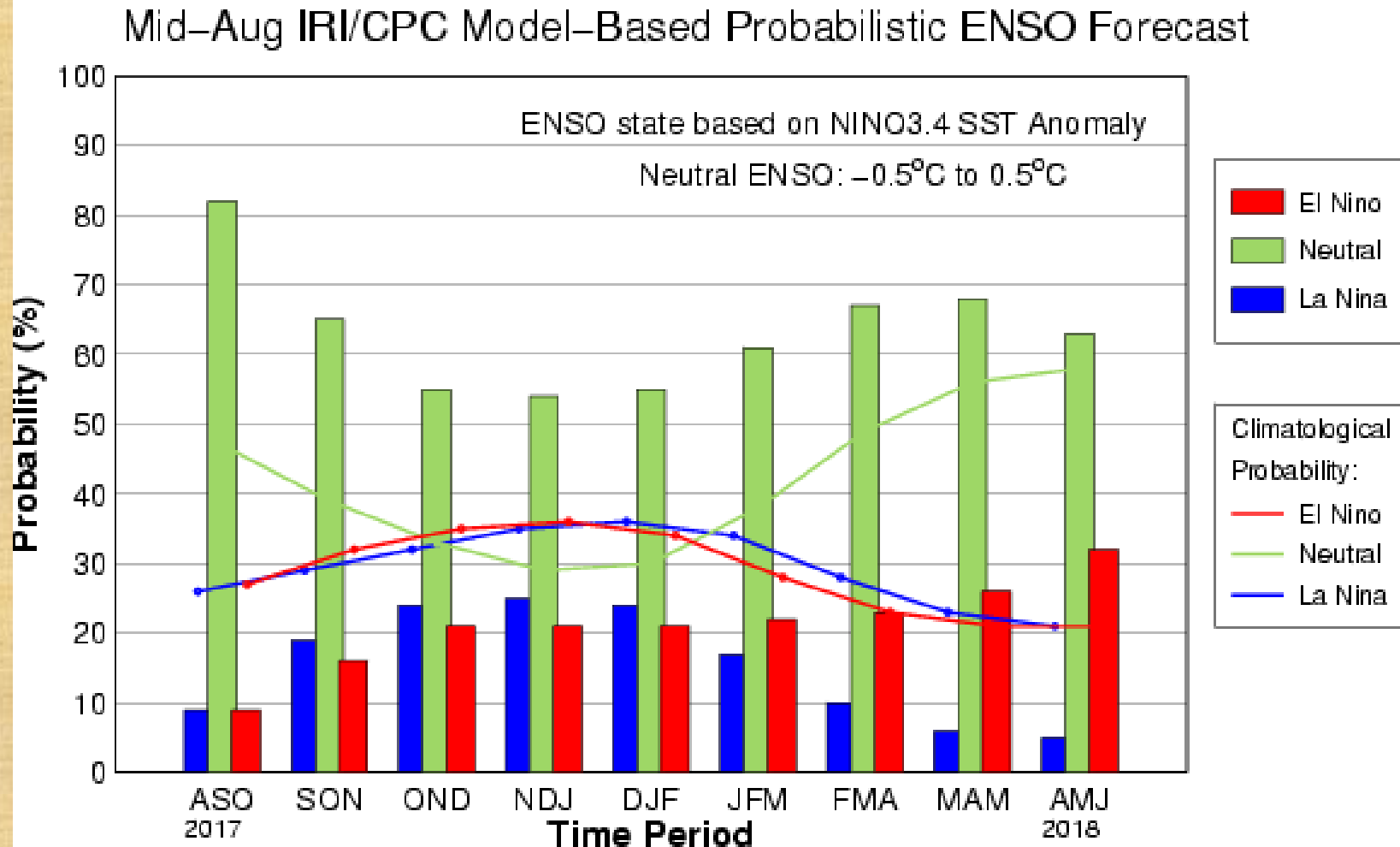
## **ENSO Alert System**

- **El Niño or La Niña Watch:** Issued when conditions are favorable for the development of El Niño or La Niña conditions in the next six months.
- **El Niño or La Niña Advisory:** Issued when El Niño or La Niña conditions are observed and expected to continue.



# ENSO Forecast from August into early Spring of 2018

ENSO IS NOW IN A **NEUTRAL** PERIOD. NO CLEAR SIGNAL FOR THE WINTER; LEANING TOWARD NEUTRAL BUT WEAK EL NIÑO ALSO POSSIBLE

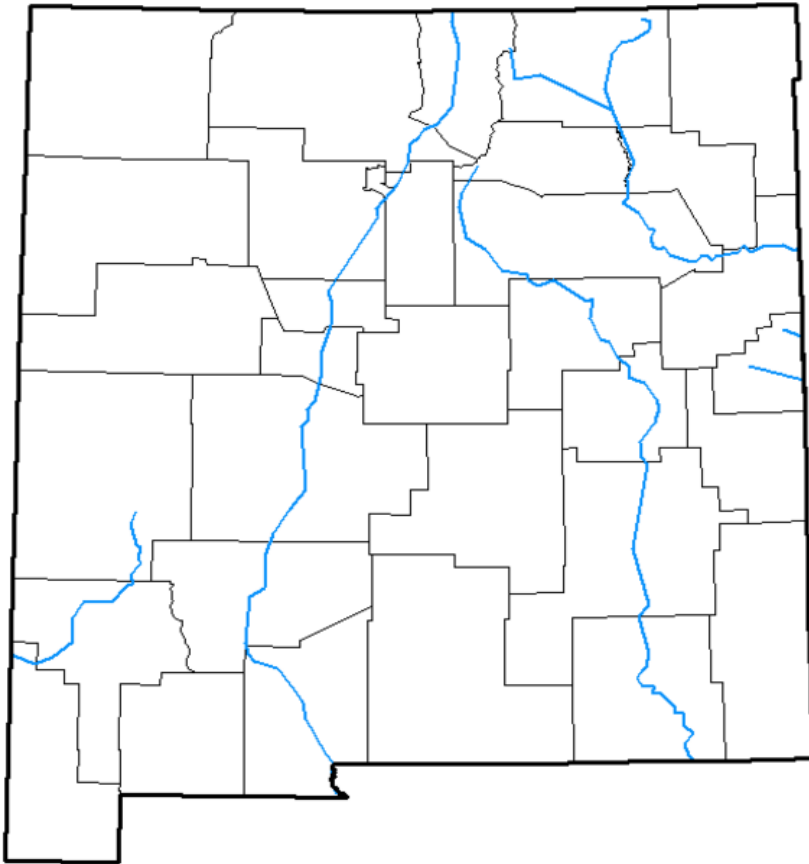


# Current drought conditions for New Mexico and 3 month change

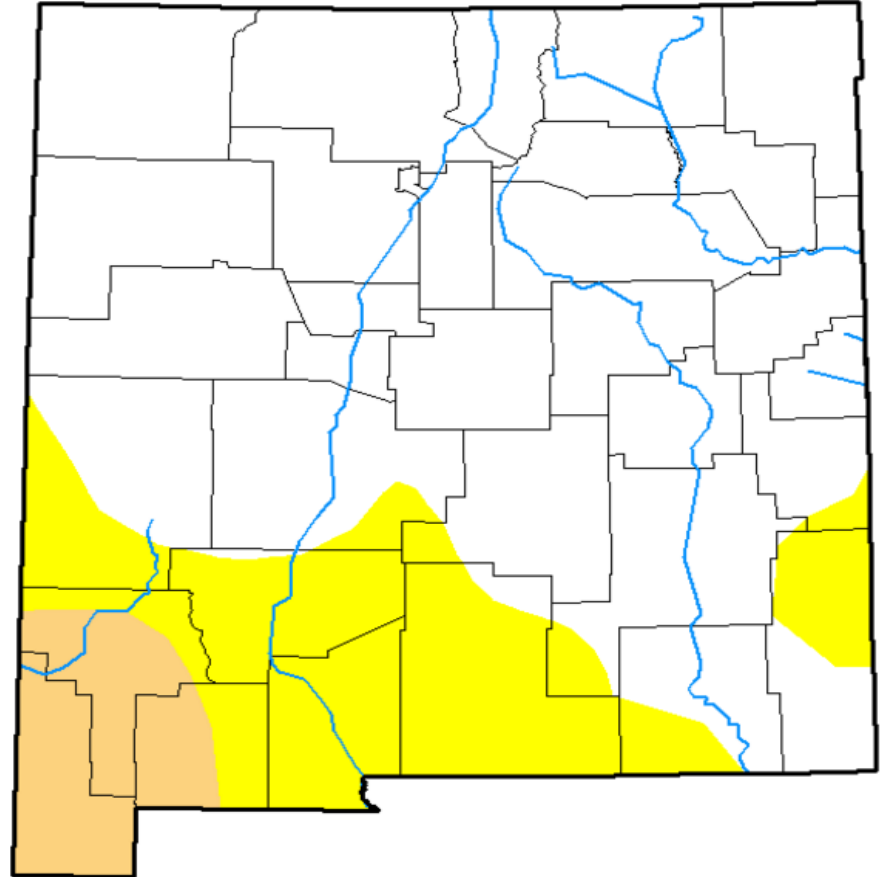
- Abnormally Dry – D0
- Moderate Drought – D1
- Severe Drought – D2
- Extreme Drought – D3
- Exceptional – D4

**\*\*\*First time at least since 1999, New Mexico is totally Drought Free\*\*\***

**August 22, 2017**

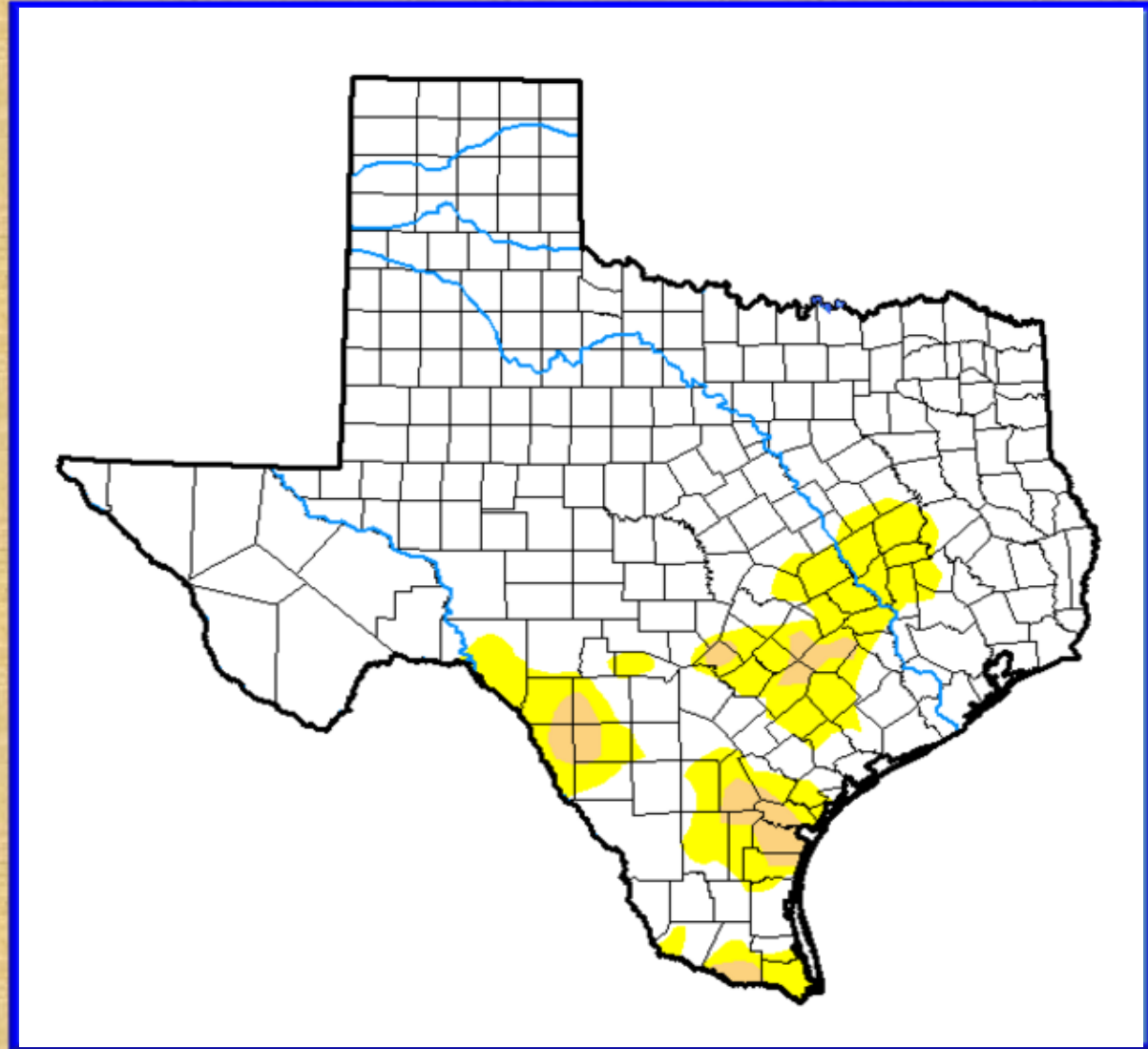
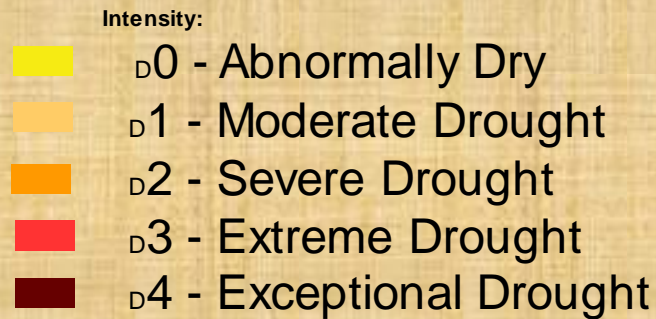


**May 30, 2017**





# Current drought conditions for Texas as of August 22, 2017



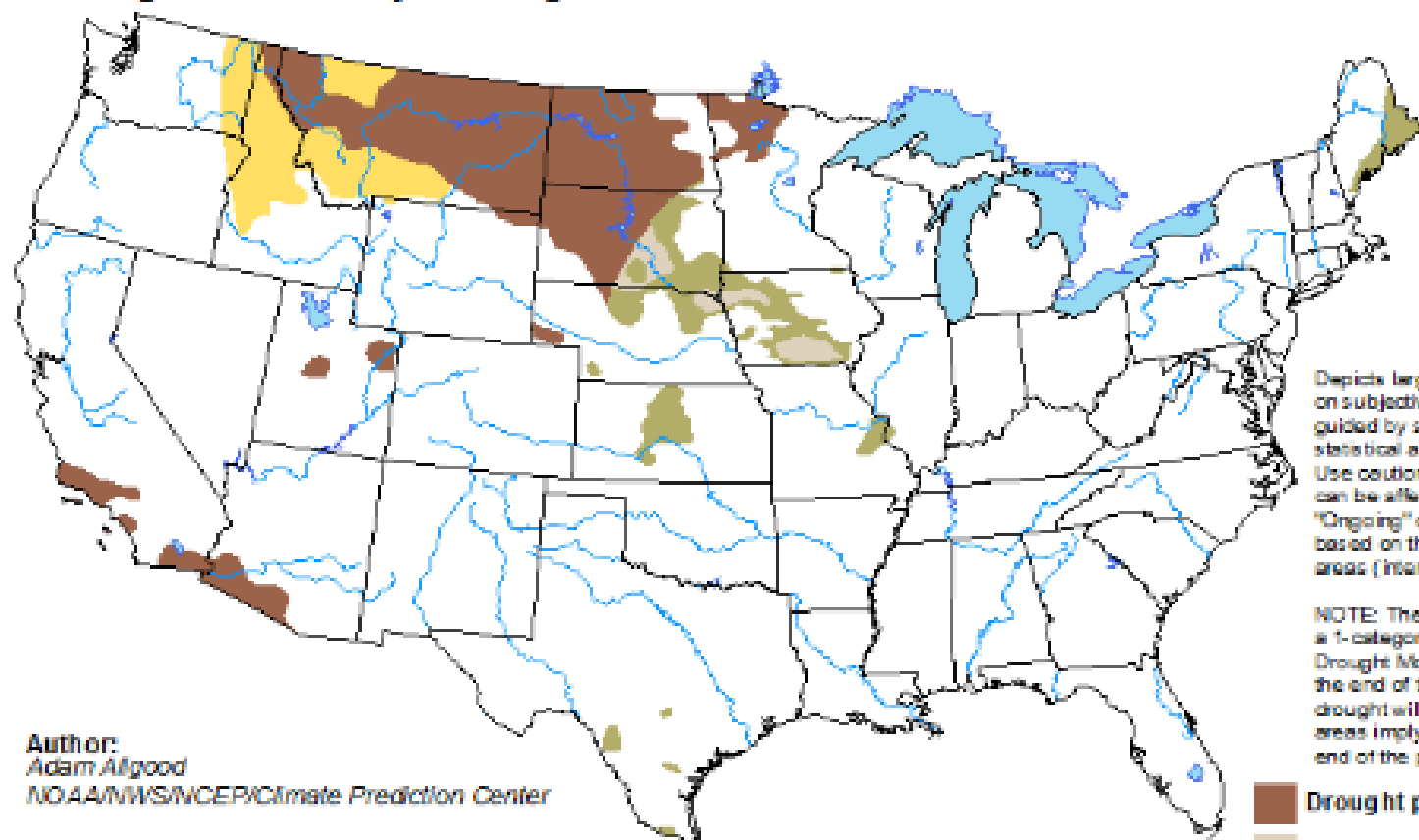
**Build your own custom slider maps here at:**

**<http://droughtmonitor.unl.edu/MapsandData/ComparisonSlider.aspx>**

# U.S. Seasonal Drought Outlook

## Drought Tendency During the Valid Period





Valid for August 17 - November 30, 2017  
Released August 17, 2017

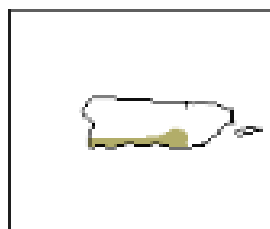
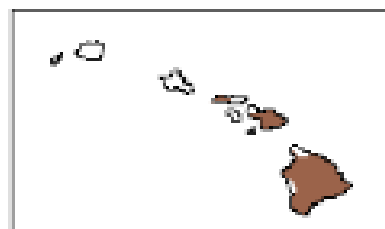
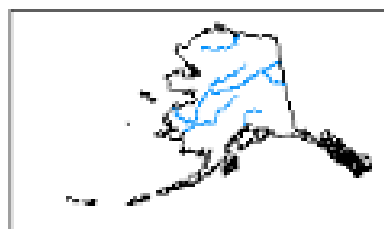


Author:  
Adam Algood  
NOAA/NWS/NCEP/Climate Prediction Center

Depicts large-scale trends based on subjectively derived probabilities guided by short- and long-range statistical and dynamical forecasts. Use caution for applications that can be affected by short lived events. "Ongoing" drought areas are based on the U.S. Drought Monitor areas (intensities of D1 to D4).

NOTE: The tan areas imply at least a 1-category improvement in the Drought Monitor intensity levels by the end of the period, although drought will remain. The green areas imply drought removal by the end of the period (D0 or none).

-  Drought persists
-  Drought remains but improves
-  Drought removal likely
-  Drought development likely



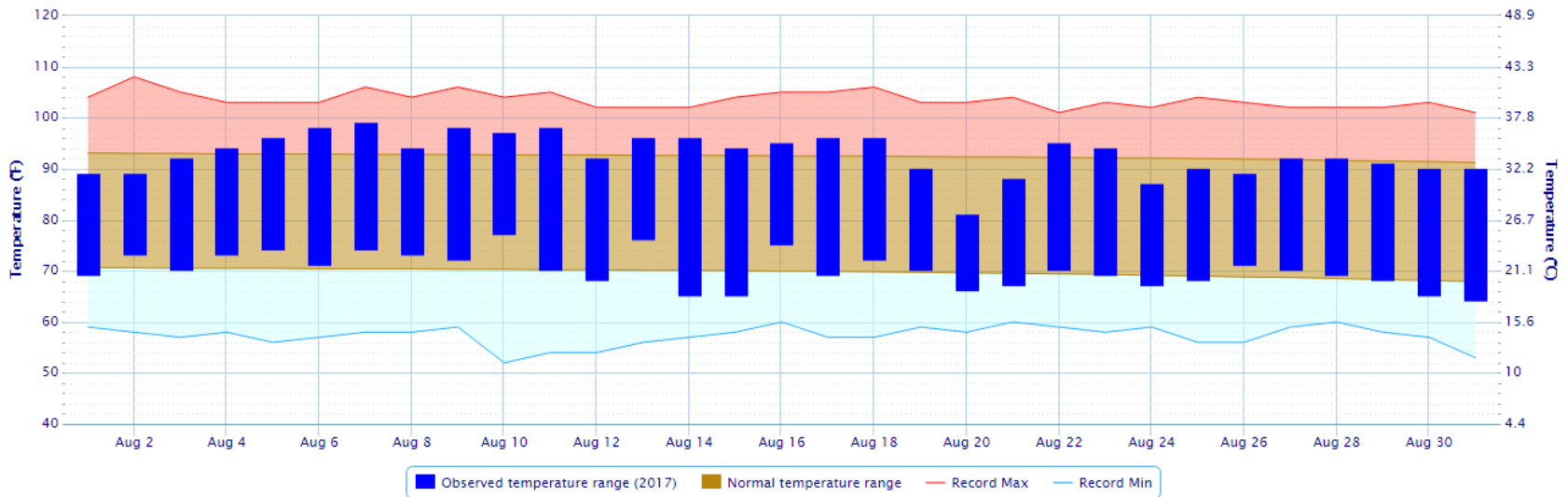
<http://go.usa.gov/3eZ73>



# Temperature and precipitation data for August 2017 in El Paso

Daily Temperature Data – El Paso Area, TX (ThreadEx)

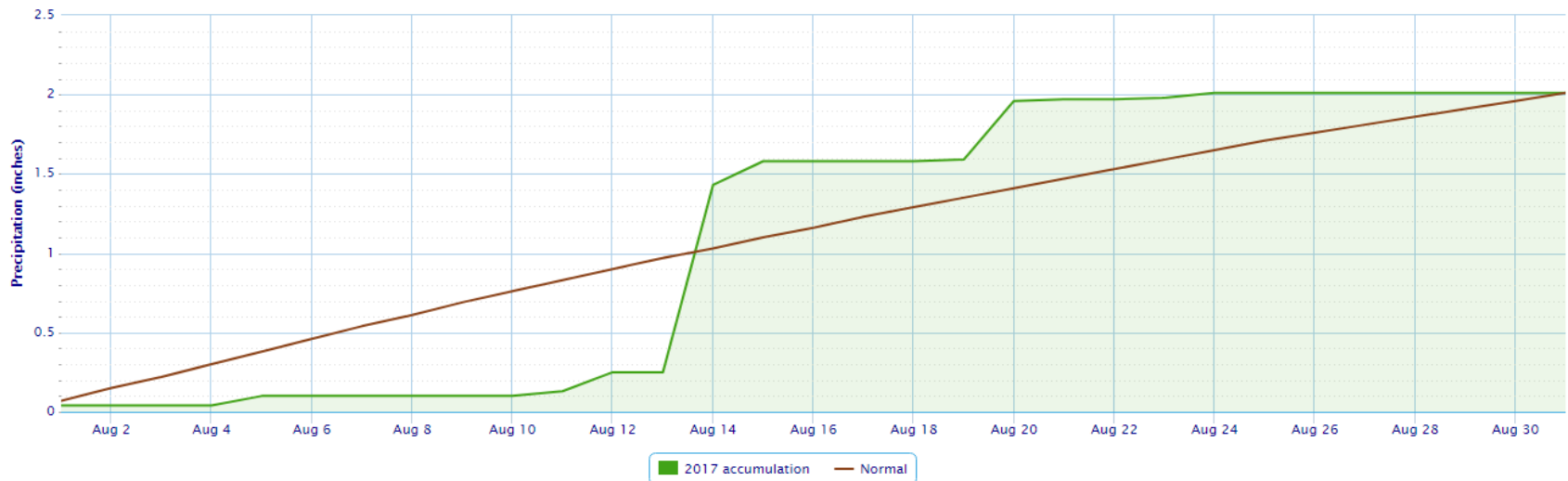
Period of Record – Max temperature: 1887-01-01 to 2017-08-31; Min temperature: 1879-01-01 to 2017-08-31. Normals period: 1981-2010. Click and drag to zoom chart.



Powered by ACIS

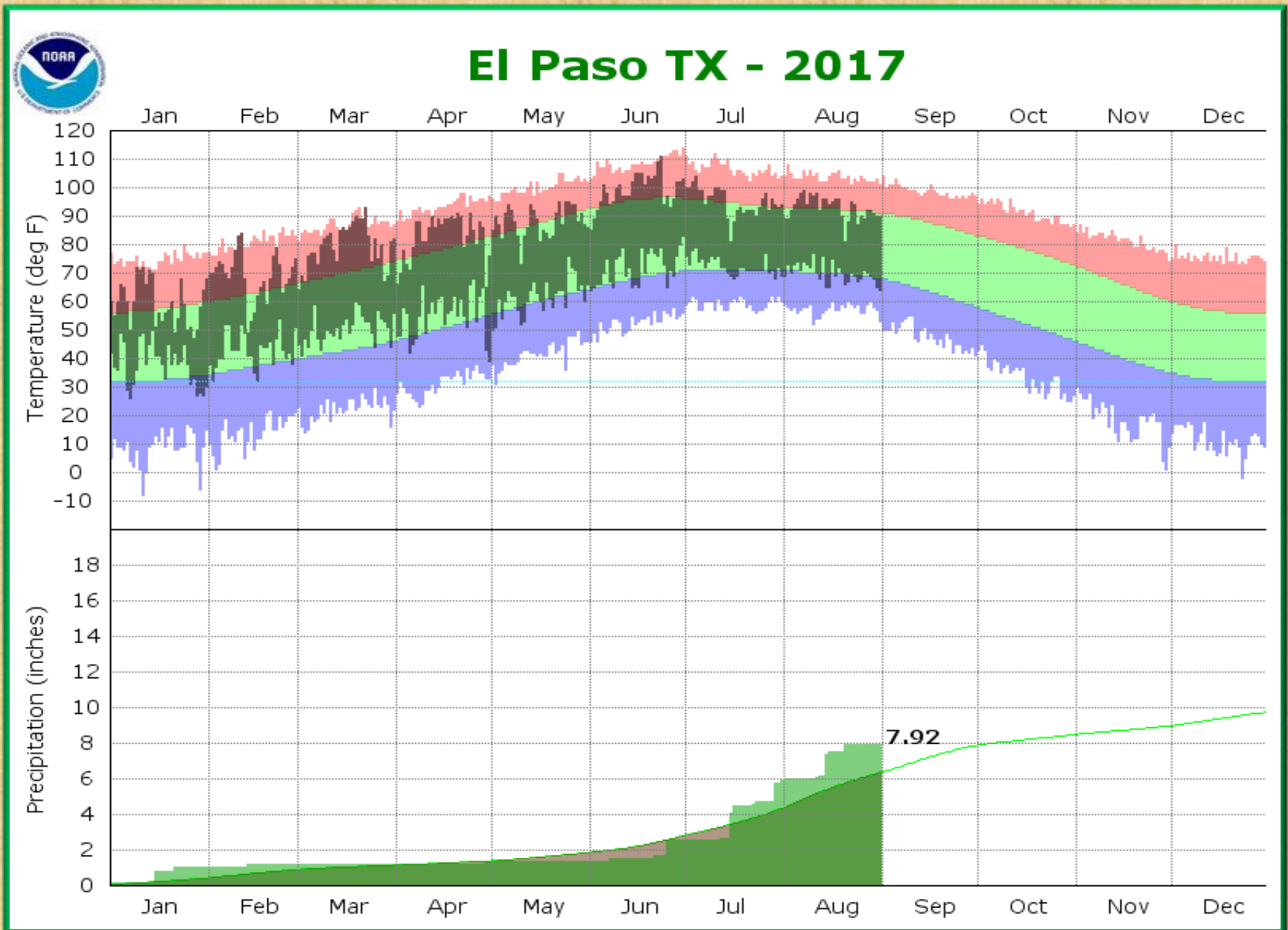
Accumulated Precipitation – El Paso Area, TX (ThreadEx)

Click and drag to zoom to a shorter time interval; green/black diamonds represent subsequent/missing values



Powered by ACIS

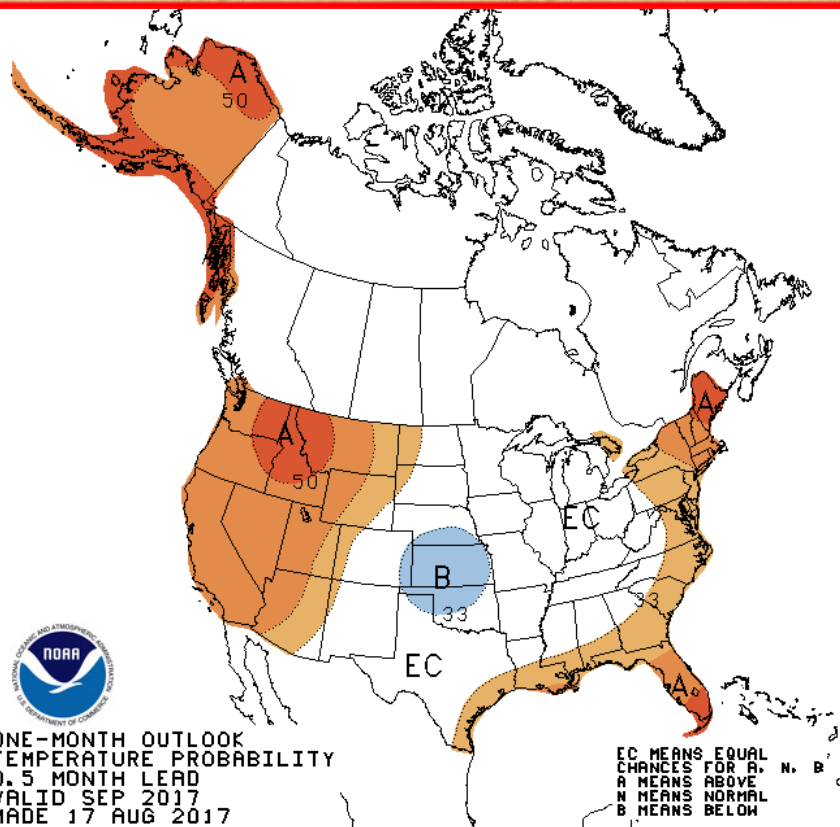
# 2017 year-to-date temperature and precipitation data El Paso



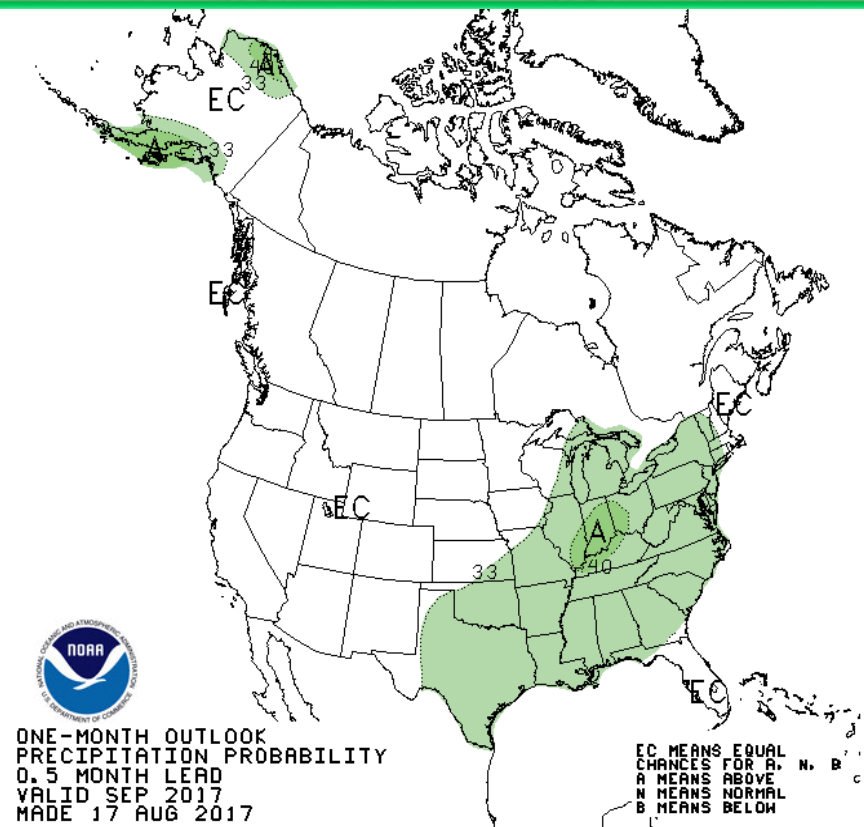


# Temperature and precipitation outlook for September 2017

## Temperature

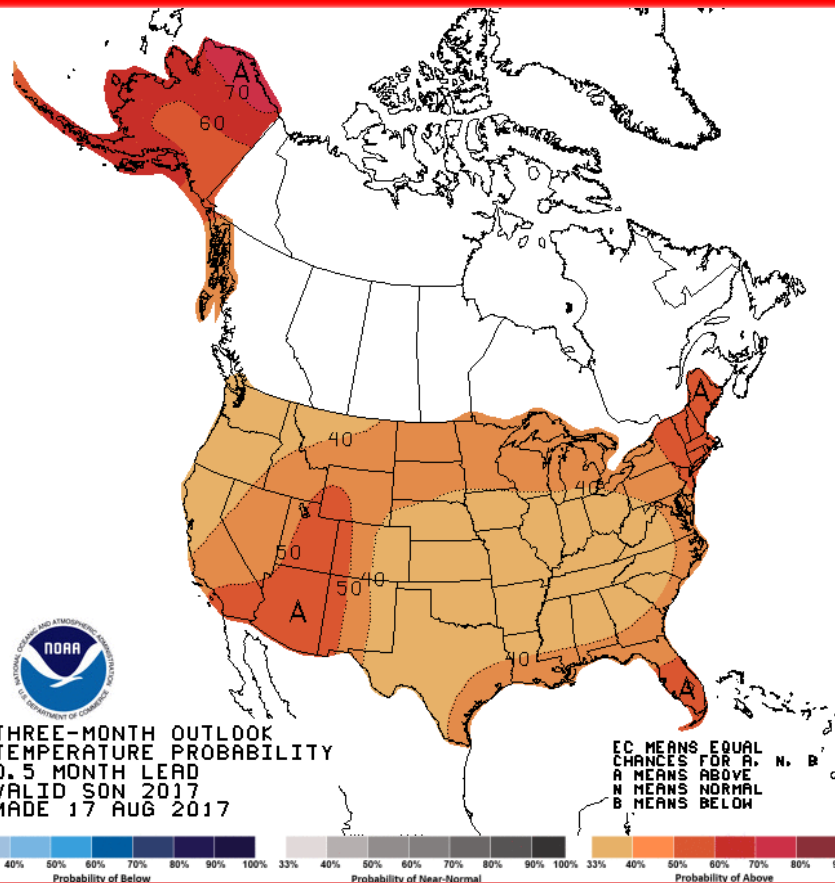


## Precipitation

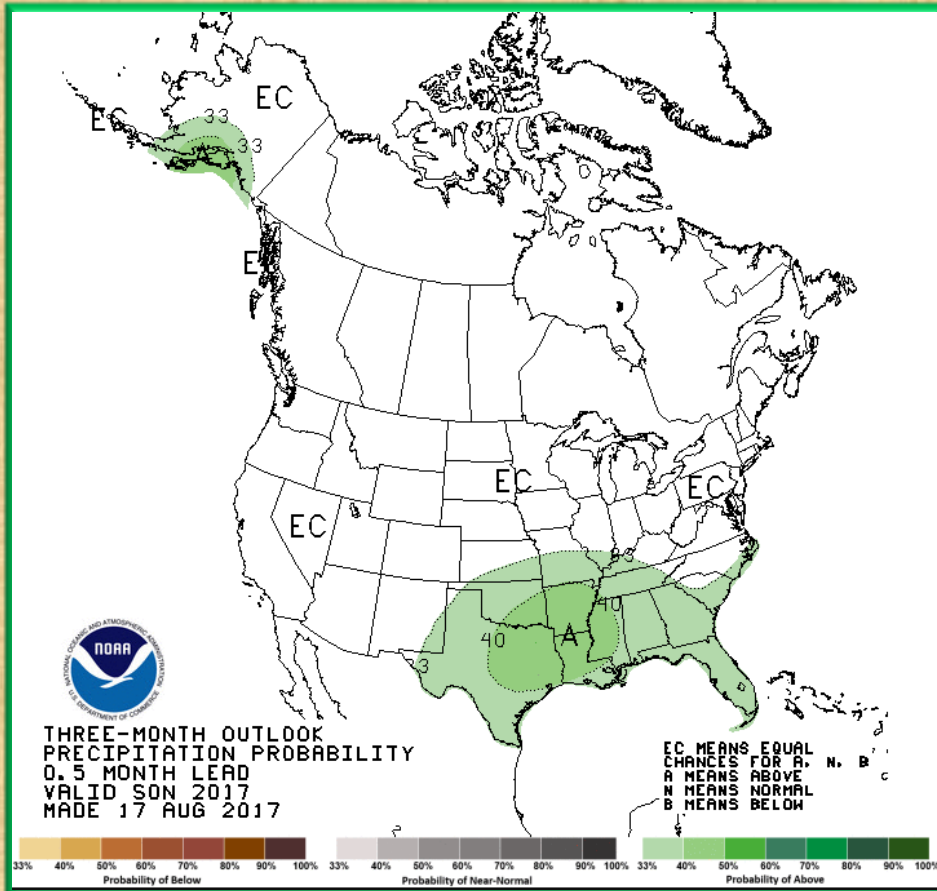


# Temperature and precipitation outlook For September-November 2017

## Temperature

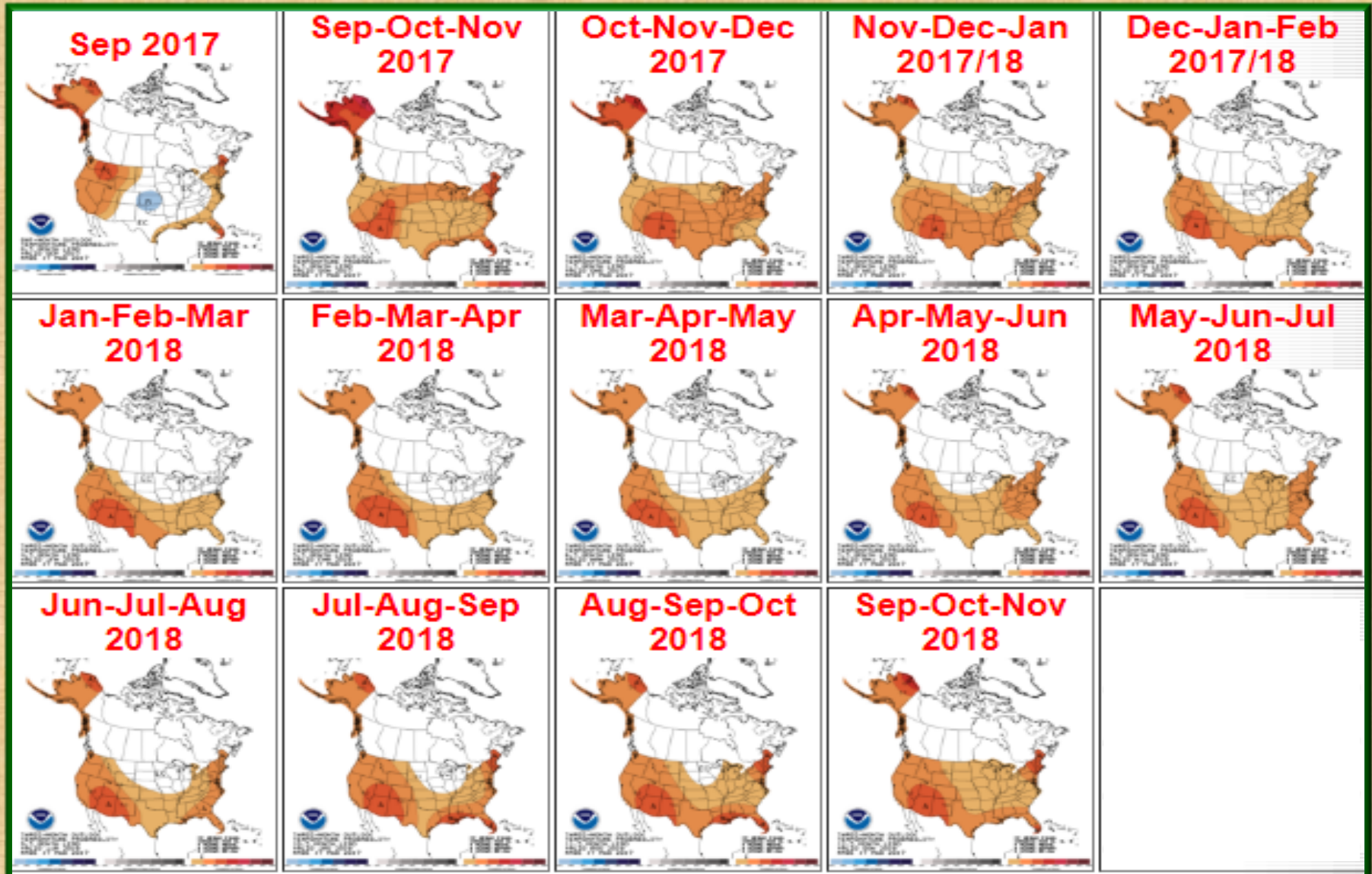


## Precipitation

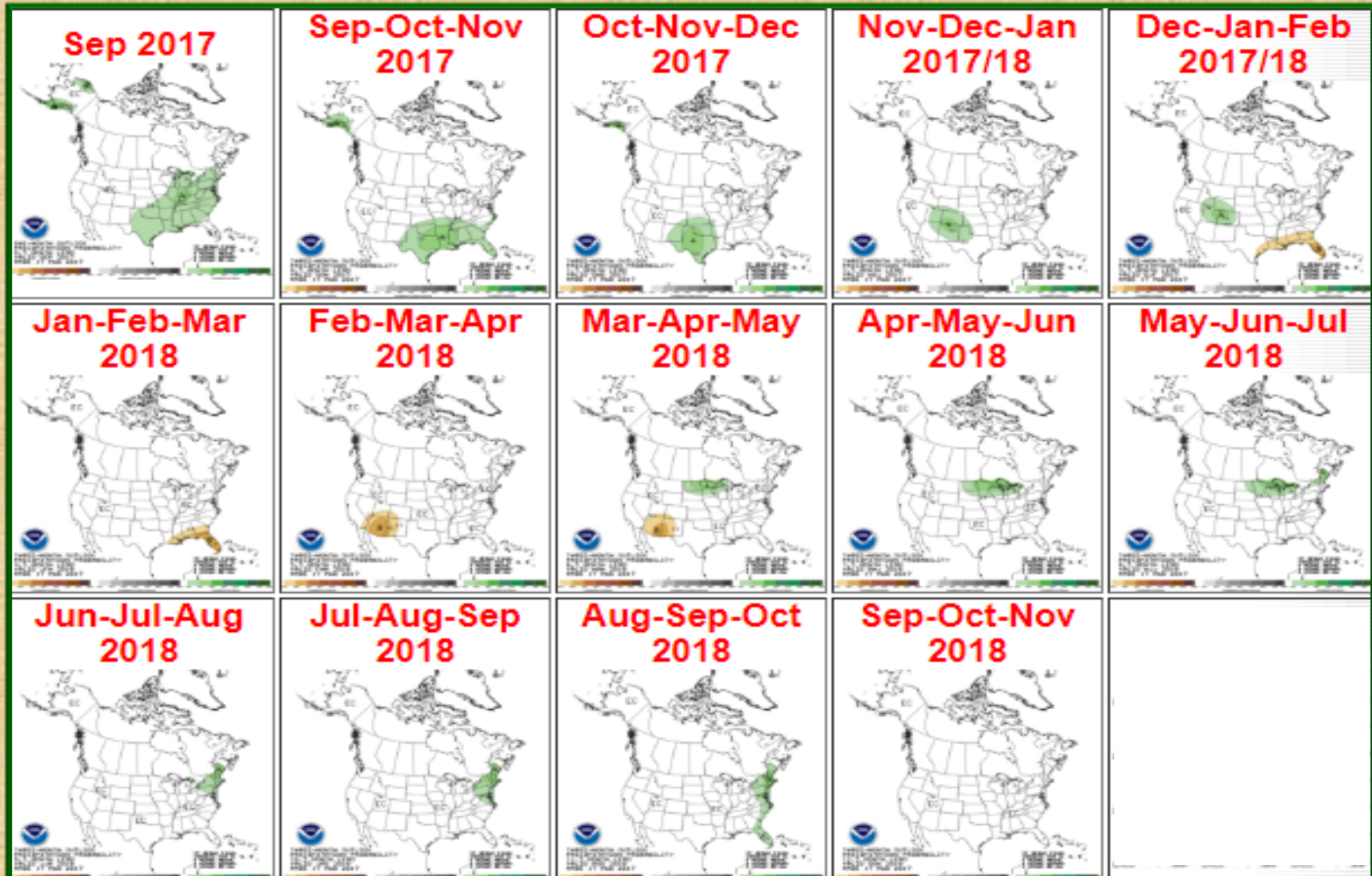




# Temperature Outlook Through November 2018

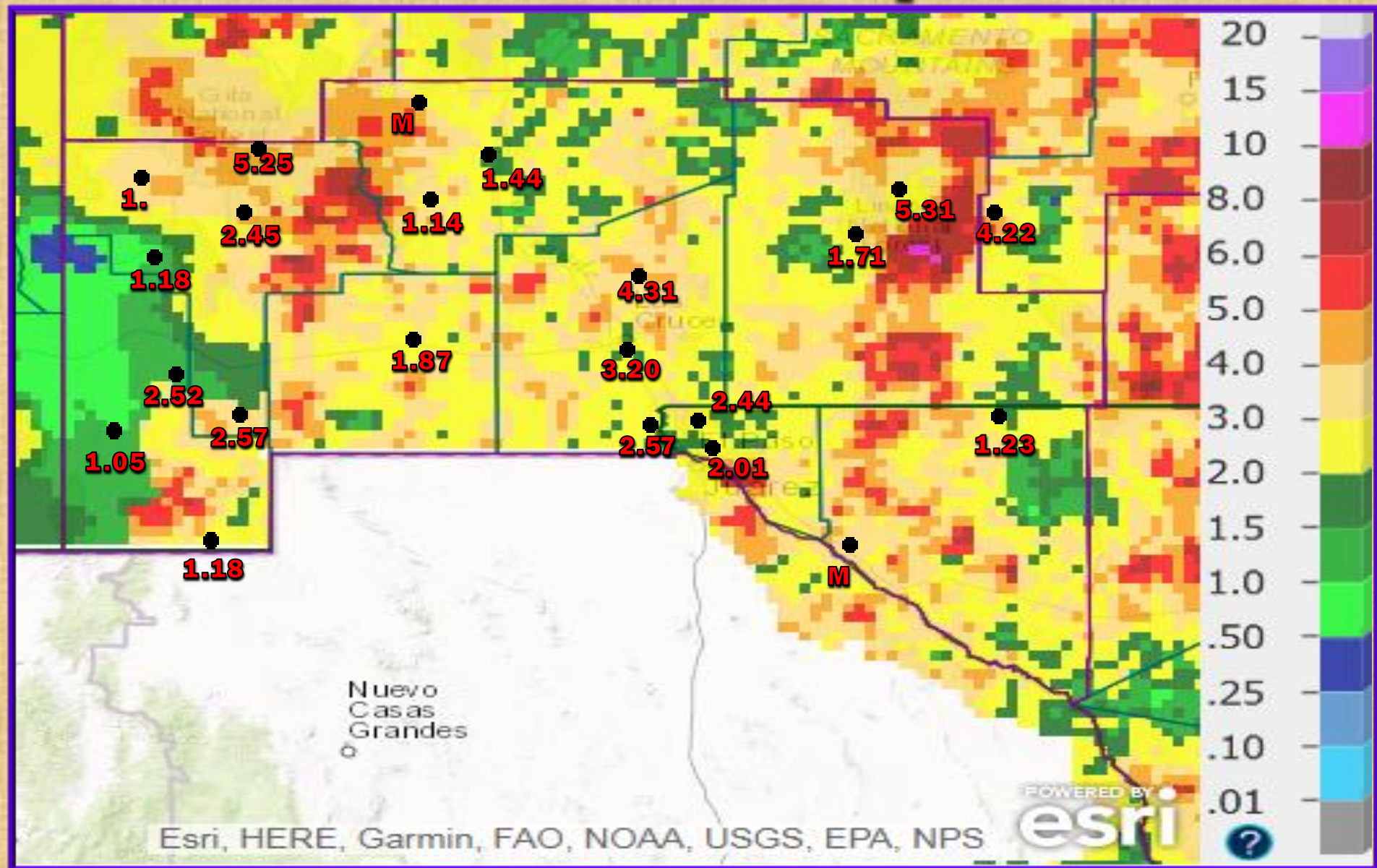


# Precipitation Outlook Through November 2018

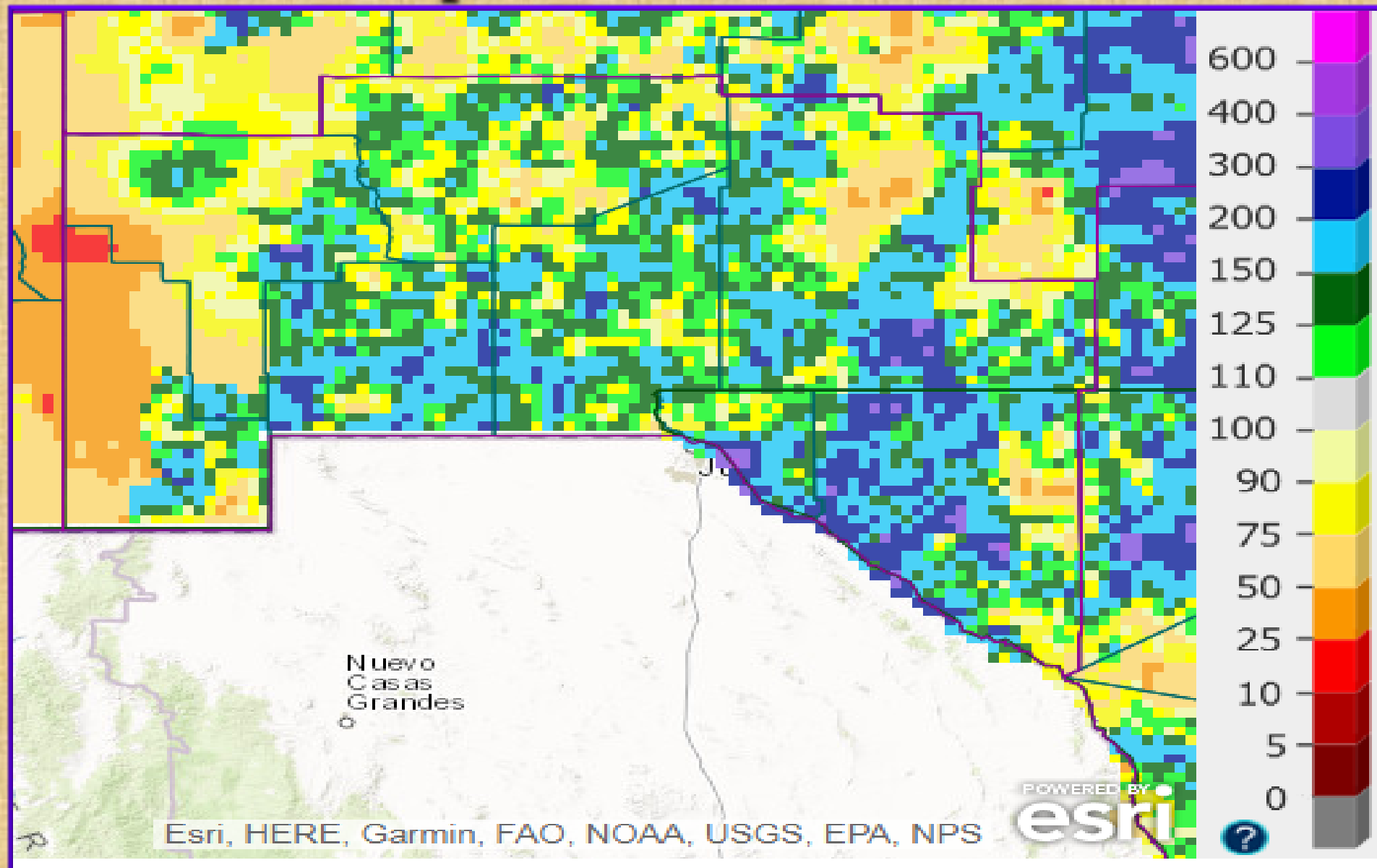




# August 2017 radar rainfall estimate with surface rainfall reports



# August 2017 radar rainfall estimate percent of normal



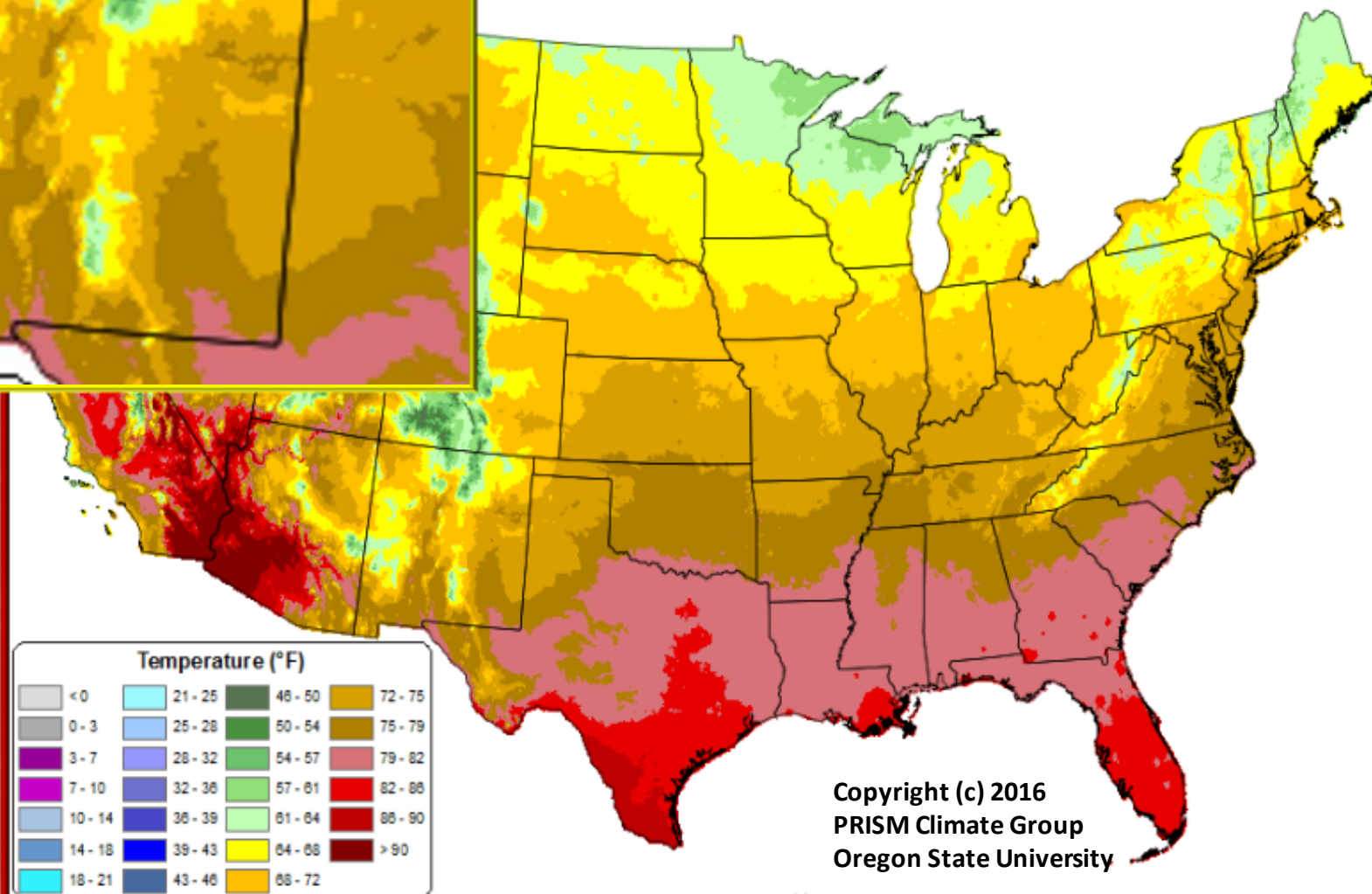
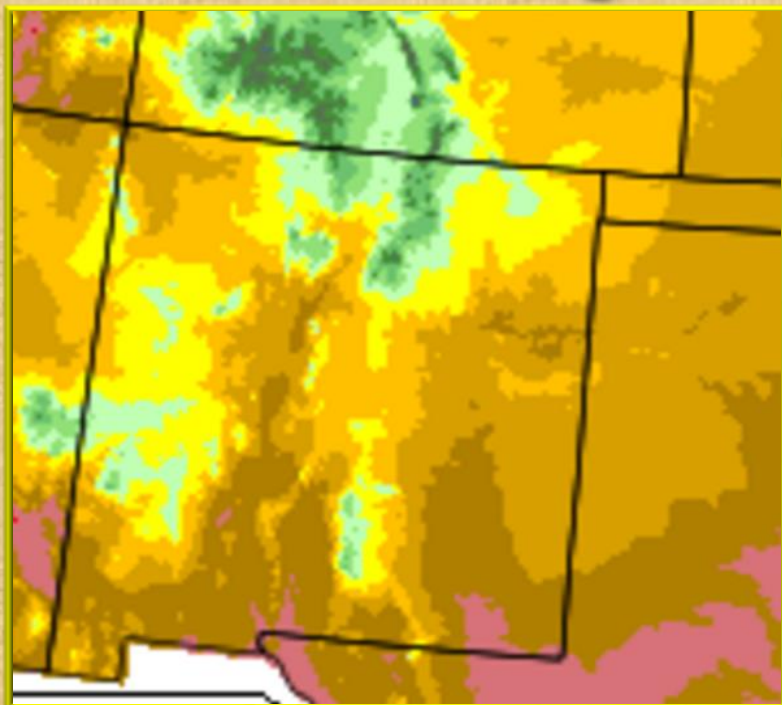


# Average Daily Mean Temperature for August 2017

Temperature: 01 August 2017 - 31 August 2017

Period ending 7 AM EST 31 Aug 2017

(Map created 01 Sep 2017)



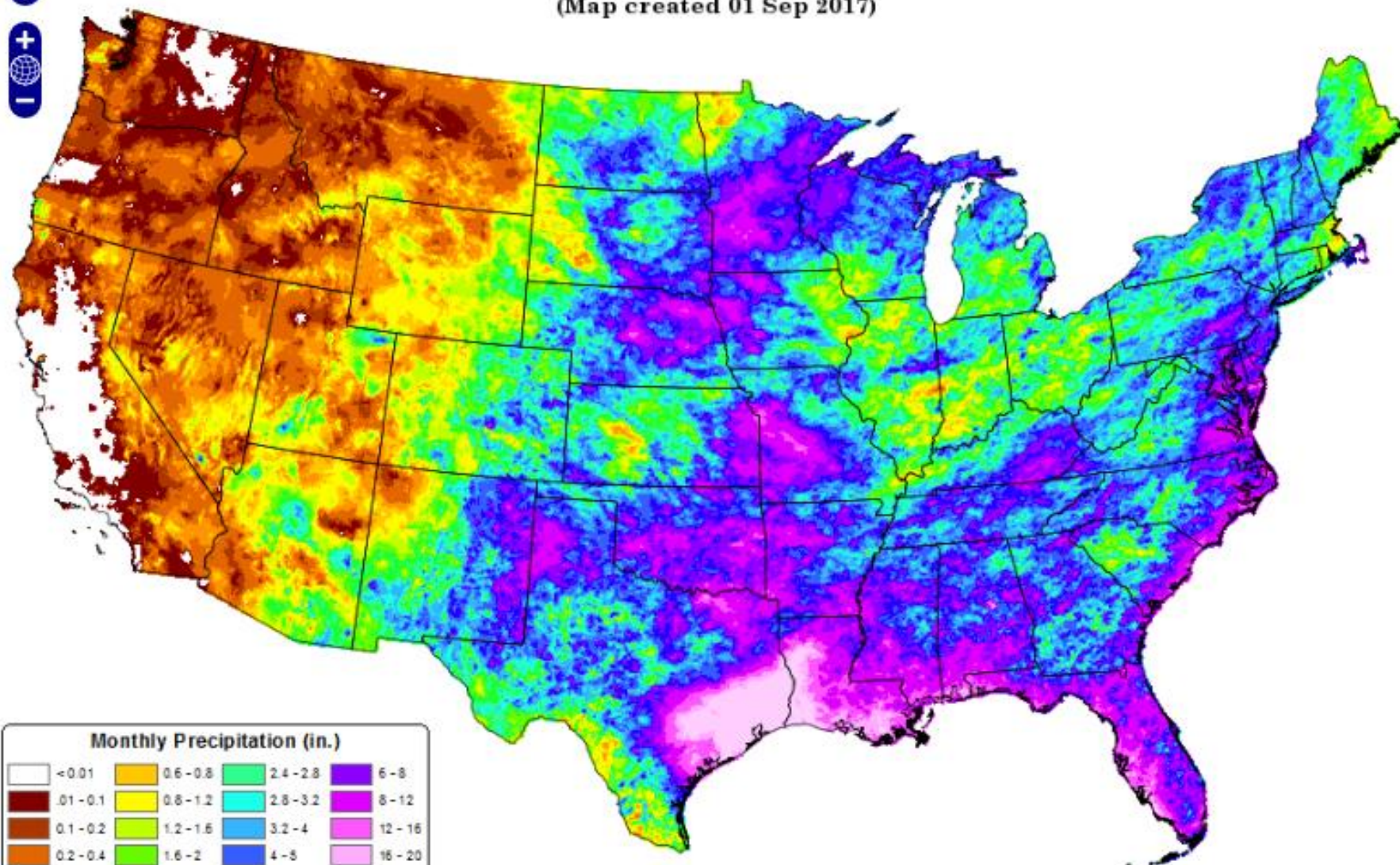
Copyright (c) 2016  
PRISM Climate Group  
Oregon State University

# Total Precipitation for August 2017

Total Precipitation: 01 August 2017 - 31 August 2017

Period ending 7 AM EST 31 Aug 2017

(Map created 01 Sep 2017)





# Special Features

<http://www.srh.noaa.gov/epz/?n=elpwindrosedata>

Month: AUGUST

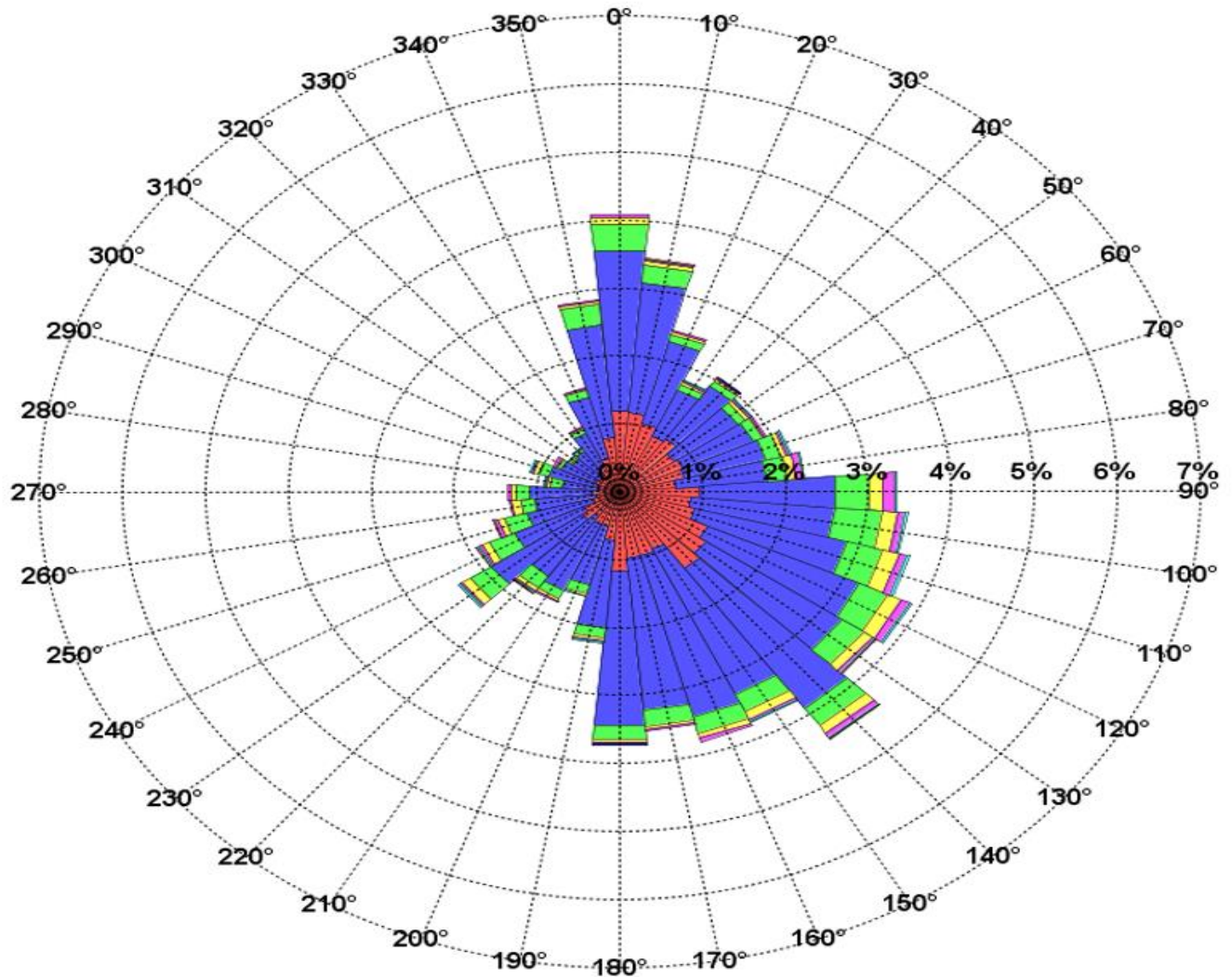
Calm: 10.33%

Variable: 9.31%

## WindRose - KELP - EL PASO INTL

% Frequency of Wind Speed from a Direction

POR:19730101-20140602



# Selected weather reports August 2017

Date/Time	Location (County)	Event
08/01/2017 700 AM	HIGH ROLLS 5 W-OTERO	3.69 INCHES HEAVY RAIN
08/01/2017 758 AM	LAS CRUCES 2 SW-DONA ANA	2.52 INCHES HEAVY RAIN
08/01/2017 759 AM	ORGAN-DONA ANA	2.09 INCHES HEAVY RAIN
08/01/2017 700 AM	EL PASO 8 SE-EL PASO	1.92 INCHES HEAVY RAIN
08/01/2017 700 AM	CABALLO 6 S-SIERRA	1.78 INCHES HEAVY RAIN
08/01/2017 800 AM	WSMR MAIN POST-DONA ANA	1.77 INCHES HEAVY RAIN
08/01/2017 715 AM	TIMBERON-OTERO	1.56 INCHES HEAVY RAIN
08/01/2017 740 AM	HACHITA 15 SW-HIDALGO	1.52 INCHES HEAVY RAIN
08/01/2017 800 AM	CLOUDCROFT 6 SW-OTERO	1.18 INCHES HEAVY RAIN
08/01/2017 621 AM	DELL CITY 1 SW-HUDSPETH	1.13 INCHES HEAVY RAIN
08/01/2017 700 AM	ALAMOGORDO 2 SW-OTERO	1.06 INCHES HEAVY RAIN
08/01/2017 800 AM	DEMING AIRPORT-LUNA	1.00 INCHES HEAVY RAIN
08/13/2017 400 PM	LAS CRUCES 2 NE-DONA ANA	0.88 INCH HAIL
08/13/2017 344 PM	DONA ANA 1 SE-DONA ANA	0.75 INCH HAIL

# Selected weather reports August 2017

<b>Date/Time</b>	<b>Location (County)</b>	<b>Event</b>
08/13/2017 510 PM	DONA ANA-DONA ANA	FLASH FLOOD I-25
08/15/2017 700 AM	SOCORRO 4 NW-HUDSPETH	4.35 INCHES HEAVY RAIN
08/15/2017 800 AM	SOCORRO 3 SE-HUDSPETH	3.29 INCHES HEAVY RAIN
08/15/2017 700 AM	EL PASO 9 SE-EL PASO	2.40 INCHES HEAVY RAIN
08/15/2017 800 AM	HORIZON CITY 3 W-EL PASO	2.31 INCHES HEAVY RAIN
08/15/2017 730 AM	LA LUZ 6 NE-OTERO	1.84 INCHES HEAVY RAIN
08/15/2017 700 AM	ALLAMOORE 17 N-HUDSPETH	1.50 INCHES HEAVY RAIN
08/25/2017 827 PM	EL PASO 1 NW-EL PASO	63 MPH THUNDERSTORM WIND
08/25/2017 827 PM	EL PASO 6 NW-EL PASO	50 MPH THUNDERSTORM WIND
08/25/2017 827 PM	EL PASO-EL PASO	FLASH FLOOD I-10 AT PORFIRIO DIAZ






# NWS El Paso is on Instagram

Follow us at:  
[nwselpaso](#)



Photo Credit: John Fausett



# NATIONAL WEATHER SERVICE

NATIONAL OCEANIC AND ATMOSPHERIC ADMINISTRATION

[HOME](#)
[FORECAST](#)
[PASTWEATHER](#)
[SAFETY](#)
[INFORMATION](#)
[EDUCATION](#)
[NEWS](#)
[SEARCH](#)
[ABOUT](#)

Local forecast by "City, ST" or ZIP code


[Location Help](#)

## Heavy Rain and Flash Flooding Possible Over Parts of the Eastern United States

Heavy rainfall is expected over portions of the eastern United States through Thursday. Flooding and flash flooding will be possible in some areas. Click the "Read More" link for excessive rainfall forecasts from the Weather Prediction Center. [Read More >](#)

### NWS El Paso

[Weather.gov > El Paso, TX](#)

[El Paso, TX](#)  
Weather Forecast Office


[Current Hazards](#)
[Current Conditions](#)
[Radar](#)
[Forecasts](#)
[Rivers and Lakes](#)
[Climate and Past Weather](#)
[Local Programs](#)

#### Today

### Wednesday

Warmer with a Few Afternoon Storms

Weather Forecast Office  
El Paso, TX  
September 27, 2016 4:43 PM




#### Heavy rain expected across the Mid-Atlantic region and central Appalachians.

Heavy rainfall is possible over portions of the eastern United States today, with the highest risk across the Mid-Atlantic and central Appalachians. Click the "Read More" link for excessive rainfall forecasts from the Weather Prediction Center. Afternoon showers and thunderstorms are possible over portions of the Southwest and southern Rockies through Friday. [Read More >](#)

### Monthly Weather Digest

[Weather.gov > El Paso, TX > Monthly Weather Digest](#)

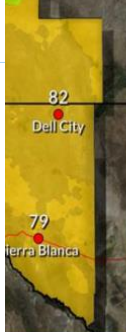
[Current Hazards](#)
[Current Conditions](#)
[Radar](#)
[Forecasts](#)
[Rivers and Lakes](#)
[Climate and Past Weather](#)
[Local Programs](#)



Southern New Mexico and Far West Texas has a variety of weather from month to month. Conditions can range from extreme drought, to heavy flooding rains, from record breaking heat to bone chilling cold. Below you will find past weather highlights from the area that the NWS office in Santa Teresa NM covers. This area includes the following counties in New Mexico: Hudspeth, Grant, Luna, Sierra, Doña Ana and Otero and the following counties in Texas: El Paso and Hudspeth.

#### WEATHER DIGESTS AND BULLETINS

Weather Digest	Southwest Weather Bulletins
<a href="#">January</a>	2005 <a href="#">Spring</a> <a href="#">Fall</a>
<a href="#">February</a>	2006 <a href="#">Spring</a> <a href="#">Fall</a>
<a href="#">March</a>	2007 <a href="#">Spring</a> <a href="#">Fall</a>
<a href="#">April</a>	2008 <a href="#">Spring</a> <a href="#">Fall</a>
<a href="#">May</a>	2009 <a href="#">Spring</a> <a href="#">Fall</a>
<a href="#">June</a>	2010 <a href="#">Spring</a> <a href="#">Fall</a>
<a href="#">July</a>	2011 <a href="#">Spring</a> <a href="#">Fall</a>
<a href="#">August</a>	2012 <a href="#">Spring</a> <a href="#">Fall</a>
<a href="#">September</a>	2013 <a href="#">Spring</a> <a href="#">Fall</a>
<a href="#">October</a>	2014 <a href="#">Spring</a> <a href="#">Fall</a>
<a href="#">November</a>	
<a href="#">December</a>	



weather.gov/epz

**Don't Forget-Current and past issues of our Weather Digest are available on our website at <http://www.weather.gov/epz/>**

**Just click on "Local Programs>Weather Digest", then choose which month's Digest to view. Also, though discontinued, don't forget to check out our back issues of Southwest Weather Bulletin.**



24 / 7 WATCHING THE SKIES OVER YOU !

