

# Southeast Michigan Climate Summary

Monthly Temperature, Precipitation, and Severe Weather Summaries

Weather Forecast Office  
Detroit, MI



# September 2021

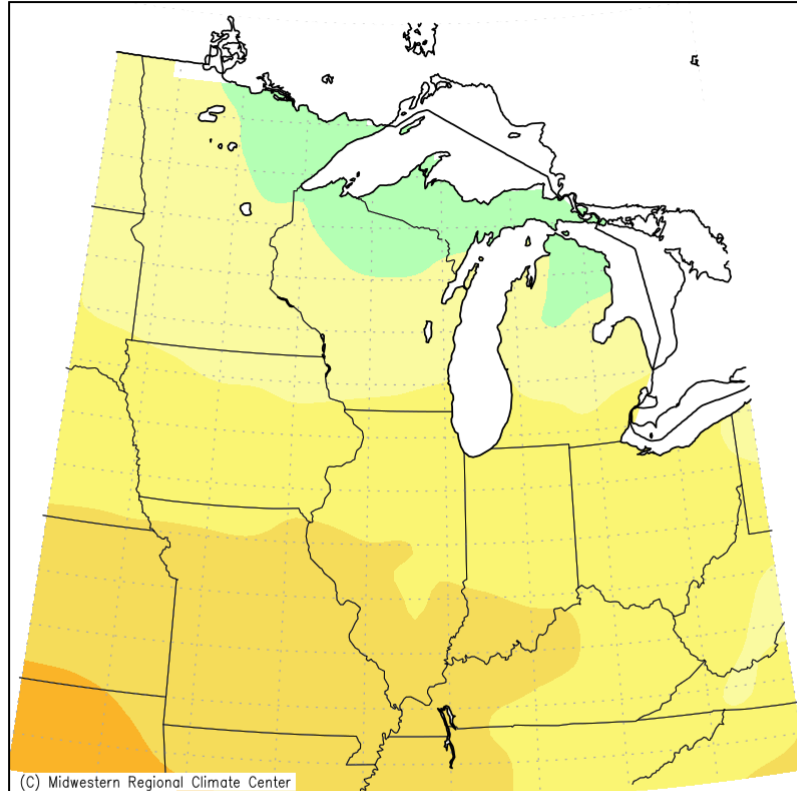
# September 2021 – Regional Temperature Summary

Weather Forecast Office  
Detroit, MI



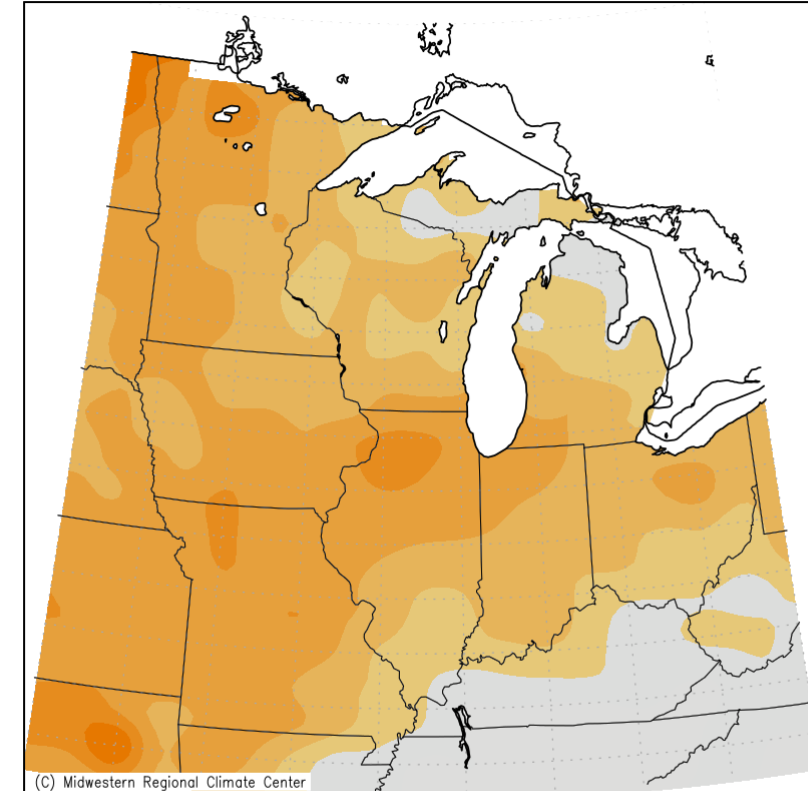
Average Temperature (left) & Departure from Average (right)

Average Temperature (°F)  
September 1, 2021 to September 30, 2021

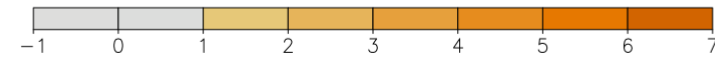


Midwestern Regional Climate Center  
Purdue University

Average Temperature (°F): Departure from Mean  
September 1, 2021 to September 30, 2021



Mean period is 1991–2020.



Midwestern Regional Climate Center  
Purdue University

September 2021 – SE Michigan Temperature Summary											
										Weather Forecast Office Detroit, MI	
Warmest, Coldest, and Averages (°F)											
Location	Highest Temp	Lowest Temp	Avg High	Avg Low	Monthly Avg	Location	Highest Temp	Lowest Temp	Avg High	Avg Low	Monthly Avg
ADRIAN LENAWEE CO AP	91	44	77.9	53.9	65.9	HARBOR BEACH 1 SSE	86	44	71.3	53.8	62.6
ALGONAC WWTP	87	43	76.9	52.7	64.8	LAPEER 2W	87	42	74.7	53.6	64.1
ANN ARBOR MUNICIPAL AP	88	39	76.7	51.1	63.9	LAPEER WWTP	87	44	75.2	52.3	63.8
ANN ARBOR SE	87	42	76.5	51.5	64.0	LEXINGTON WATER PLANT	86	44	73.0	53.0	63.0
ANN ARBOR U OF MICH	88	41	77.2	53.1	65.2	LINDEN WWTP	85	46	73.0	52.5	62.7
BAD AXE	85	42	72.4	51.8	62.1	MANCHESTER	87	43	77.3	52.6	64.9
BURTON 4N	87	43	75.1	50.9	63.0	MIDLAND	82	43	70.0	51.6	60.9
CARO WWTP	87	41	73.7	51.3	62.5	NEWPORT 4SSE	87	46	78.0	55.2	66.6
CASS CITY 1 SSW	85	41	72.7	49.7	61.2	OIL CITY 2S	80	40	71.1	47.9	59.5
CHELSEA	86	42	76.0	53.8	64.9	OWOSSO WWTP	88	46	75.4	52.8	64.1
DEARBORN NO. 2	89	48	77.0	57.7	67.4	PONTIAC INTL AP	86	46	74.6	54.9	64.7
DETROIT CITY AP	90	50	77.0	59.2	68.1	PONTIAC WWTP	87	48	75.2	54.7	64.9
<b>DETROIT METRO AIRPORT</b>	<b>89</b>	<b>47</b>	<b>76.5</b>	<b>57.3</b>	<b>66.9</b>	PORT HOPE	86	44	72.8	56.9	64.8
DETROIT WILLOW RUN AP	93	47	80.7	56.4	68.6	RICHMOND 4 NNW	88	44	74.8	53.4	64.1
FARMINGTON	86	44	75.1	53.1	64.1	SAGINAW #3	86	47	74.3	53.3	63.8
FILION 5NNW	85	43	72.9	53.1	63.0	<b>SAGINAW MBS INTL AP</b>	<b>85</b>	<b>46</b>	<b>74.2</b>	<b>53.5</b>	<b>63.9</b>
FLINT 7W	86	45	73.5	52.5	63.0	SALINE 4SW	88	43	78.4	52.7	65.6
<b>FLINT FCWOS</b>	<b>87</b>	<b>46</b>	<b>75.0</b>	<b>54.1</b>	<b>64.6</b>	TIPTON 2WNW	87	40	78.1	51.4	64.8
GOODRICH	85	47	73.5	53.0	63.2	VASSAR	88	40	74.4	49.7	62.1
GROSSE POINTE FARMS	92	48	76.0	57.4	66.7	WHITE LAKE 4E	85	40	74.3	50.4	62.3



# September – Top 20 Coldest/Warmest on Record

Weather Forecast Office  
Detroit, MI



## Top 20 Coldest/Warmest Septembers in Southeast Lower Michigan (°F)

Rank	Detroit Area*				Flint Bishop**				Saginaw Area***			
	Coldest		Warmest		Coldest		Warmest		Coldest		Warmest	
	Temp	Year	Temp	Year	Temp	Year	Temp	Year	Temp	Year	Temp	Year
1	57.4	1918	72.2	1881	55.4	1924	69.2	1933	54.9	1918	69.0	1931
2	58.6	1879	69.8	1931	56.3	1993	68.1	1931	56.4	1924	68.0	1933
3	59.1	1975	69.5	1921	57.3	1975	68.0	2015	56.7	1993	67.6	2015
4	59.1	1876	69.3	2015	57.4	1966	66.6	2002	56.8	1949	66.8	1921
5	59.2	1883	68.9	2018	57.4	1949	66.6	2019	56.9	1956	66.2	1961
6	59.4	1924	68.9	2002	57.5	1956	66.6	1934	57.0	1943	66.2	1927
7	59.6	1896	68.8	1961	57.7	1981	66.2	1921	57.3	1975	65.9	2005
8	59.6	1974	68.6	2019	57.8	1962	66.1	1961	57.4	1981	65.9	1998
9	59.6	1949	68.6	1908	58.0	1967	65.9	1927	58.5	1991	65.6	2017
10	59.6	1890	68.5	1933	58.5	1995	65.6	1939	58.5	1962	65.6	2016
11	59.7	1899	68.4	2005	58.6	1928	65.4	1978	58.7	1935	65.5	1971
12	59.9	1875	68.4	1906	58.7	2006	65.3	1998	58.8	1917	65.4	2019
13	60.0	1888	68.2	2016	58.8	1963	65.1	2005	58.9	1951	65.3	1930
14	60.1	1887	68.0	1998	58.9	1974	65.1	1930	58.9	1950	65.2	1936
15	60.3	1967	67.9	1891	59.1	1957	65.1	1925	59.0	1938	65.1	2018
16	60.4	1956	67.9	1884	59.3	2001	65.0	1936	59.0	1928	64.7	1948
17	60.7	1928	67.5	1978	59.3	1937	64.8	2016	59.1	2006	64.6	2004
18	60.8	1981	67.5	1941	59.4	2020	64.8	2018	59.3	1984	64.5	2002
19	61.0	1993	67.5	1898	59.5	1943	64.8	1983	59.3	2000	64.4	1941
20	61.2	1984	67.4	2004	59.6	1991	64.8	1971	59.3	1992	64.3	1968

\* Detroit Area temperature records date back to January 1874.

\*\* Flint Bishop temperature records date back to January 1921.

\*\*\* Saginaw Area temperature records date back to January 1912.

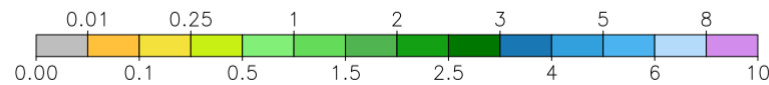
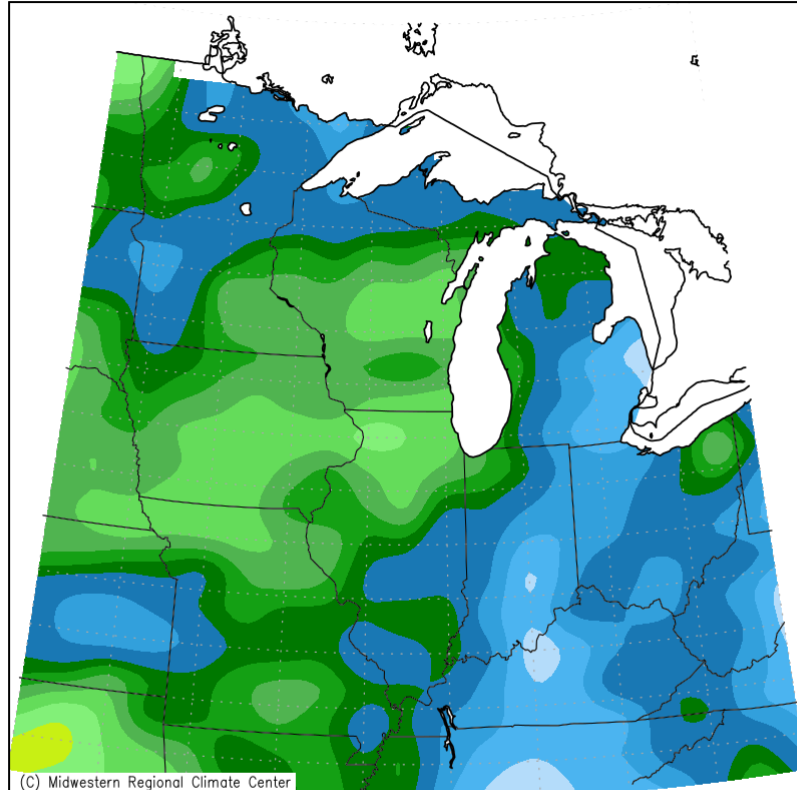
# September 2021 – Regional Precipitation Summary

Weather Forecast Office  
Detroit, MI



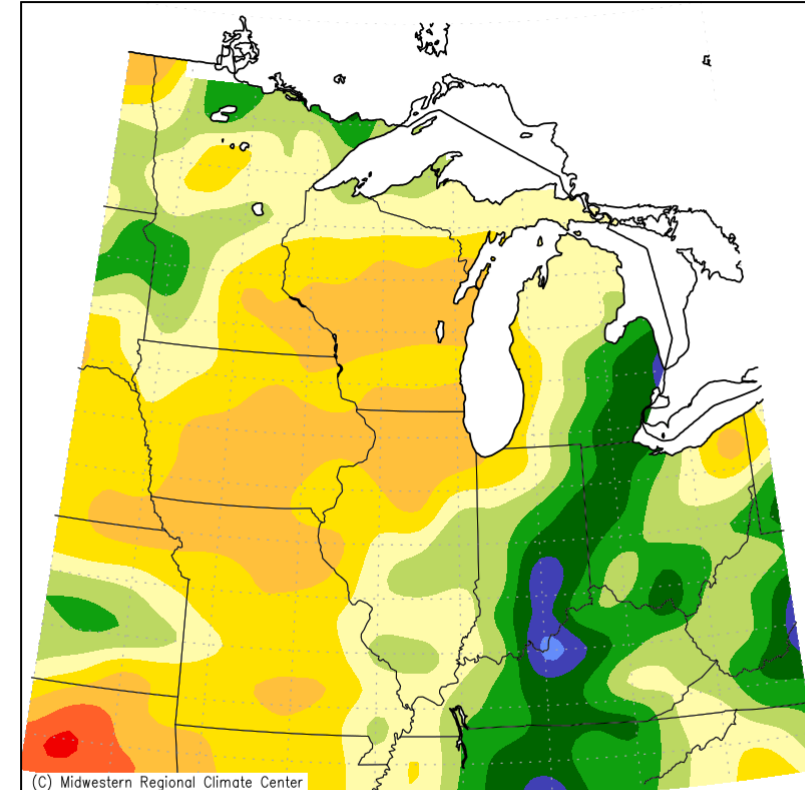
Total Monthly Precipitation (left) & Percent of Mean (right)

Accumulated Precipitation (in)  
September 1, 2021 to September 30, 2021



Midwestern Regional Climate Center  
Purdue University

Accumulated Precipitation: Percent of Mean  
September 1, 2021 to September 30, 2021



Mean period is 1991–2020.



Midwestern Regional Climate Center  
Purdue University

# September 2021 – SE Michigan Precipitation Summary

Weather Forecast Office  
Detroit, MI



Highest daily total, monthly total, and total number of days of measureable precip (in.)

Location	Highest Daily Total	Monthly Total	# of Days with Precip	Location	Highest Daily Total	Monthly Total	# of Days with Precip
ADRIAN LENAWEE CO AP	2.73	6.50	8	LAPEER 2W	1.38	6.66	12
ALGONAC WWTP	1.52	5.43	12	LAPEER WWTP	1.30	5.83	13
ANN ARBOR SE	2.86	6.37	10	LINDEN WWTP	2.00	6.66	14
ANN ARBOR U OF MICH	3.63	6.72	10	MANCHESTER	1.89	5.45	8
BAD AXE	0.98	3.63	12	MIDLAND	1.09	3.17	11
BURTON 4N	1.31	5.97	13	MILLINGTON 3 SE	1.36	6.17	12
CARO WWTP	1.91	6.99	10	NEWPORT 4SSE	2.59	5.65	9
CASS CITY 1 SSW	1.60	7.16	11	OIL CITY 2S	1.48	4.37	12
CHELSEA	1.60	4.18	9	OWOSSO WWTP	1.17	4.26	12
DEARBORN NO. 2	2.48	5.17	10	PONTIAC INTL AP	1.29	4.90	11
<b>DETROIT METRO AIRPORT</b>	<b>2.23</b>	<b>5.43</b>	<b>10</b>	PONTIAC WWTP	2.80	6.19	13
DETROIT WILLOW RUN AP	2.11	5.25	10	RICHMOND 4 NNW	2.98	7.28	10
FARMINGTON	3.52	6.75	10	ROSEVILLE	1.70	5.25	11
FILION 5NNW	1.58	4.30	15	SAGINAW 8NW	1.47	5.46	10
FLINT 7W	1.47	5.20	13	SAGINAW #3	1.81	5.85	10
<b>FLINT FCWOS</b>	<b>1.66</b>	<b>5.62</b>	<b>12</b>	<b>SAGINAW MBS INTL AP</b>	<b>1.15</b>	<b>4.52</b>	<b>9</b>
GOODRICH	1.07	4.67	13	SALINE 4SW	2.55	5.67	12
GROSSE POINTE FARMS	2.60	6.88	10	WHITE LAKE 4E	1.51	6.11	11
HARBOR BEACH 1 SSE	1.63	5.89	11	WYANDOTTE	2.48	5.48	9

# September – Top 20 Wettest/Driest on Record

Weather Forecast Office  
Detroit, MI



## Top 20 Wettest/Driest Septembers in Southeast Lower Michigan (in.)

Rank	Detroit Area*				Flint Bishop**				Saginaw Area***			
	Wettest		Driest		Wettest		Driest		Wettest		Driest	
	Total	Year	Total	Year	Total	Year	Total	Year	Total	Year	Total	Year
1	7.52	1986	0.39	1877	10.86	1986	0.29	2002	16.16	1986	0.41	2002
2	6.71	2000	0.56	1908	8.68	1950	0.32	1979	8.15	1945	0.44	2017
3	6.50	1902	0.56	1889	8.64	2008	0.33	1969	7.49	1981	0.73	2004
4	6.46	2018	0.58	1956	8.29	1985	0.54	1955	6.02	1985	0.80	1948
5	6.28	2016	0.62	1995	7.65	1981	0.61	2013	5.80	1997	0.83	1969
6	6.28	2011	0.65	2004	6.61	1947	0.63	1991	5.74	1983	0.83	1956
7	6.24	1879	0.67	1874	6.24	2000	0.66	1956	5.66	1987	0.84	1917
8	6.06	1990	0.68	1969	5.95	1933	0.76	2004	5.64	1977	0.91	1991
9	5.99	2008	0.75	1909	5.62	2021	0.84	2017	5.61	1970	1.03	2013
10	5.90	1936	0.78	1960	5.57	1987	0.94	1957	5.53	1996	1.09	2009
11	5.67	1926	0.81	1941	5.47	2005	1.05	1995	5.50	1978	1.09	1920
12	5.55	1992	0.90	1991	5.14	1945	1.18	2009	5.33	1950	1.24	1955
13	5.55	1961	0.91	2017	4.99	1932	1.19	1953	5.12	2005	1.33	1989
14	5.47	1981	0.94	1979	4.88	1934	1.28	1998	4.91	1957	1.37	1940
15	5.43	2021	1.02	1897	4.79	1925	1.40	1941	4.87	1988	1.42	1938
16	4.71	2014	1.15	1895	4.75	1980	1.46	2007	4.84	1965	1.50	1972
17	4.69	1959	1.18	1913	4.70	1936	1.49	1938	4.80	1942	1.51	1916
18	4.64	1921	1.20	2013	4.66	1993	1.59	1946	4.77	1922	1.51	1914
19	4.54	1925	1.26	1888	4.59	1977	1.61	1928	4.59	1927	1.55	1976
20	4.47	1915	1.28	1963	4.57	1978	1.62	1966	4.55	2008	1.62	1982

\* Detroit Area precipitation records date back to November 1874.

\*\* Flint Bishop precipitation records date back to January 1921.

\*\*\* Saginaw Area precipitation records date back to January 1912.

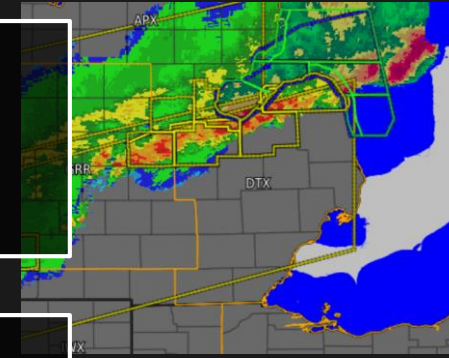
# September 2021 – Significant Weather Events

Weather Forecast Office  
Detroit, MI



Follow links for web summaries

**September 7 Severe Weather**  
[weather.gov/dtx/severeweather090721](https://weather.gov/dtx/severeweather090721)



**September 12 Severe Weather**  
[weather.gov/dtx/Severe Storms 091221](https://weather.gov/dtx/Severe%20Storms%20091221)

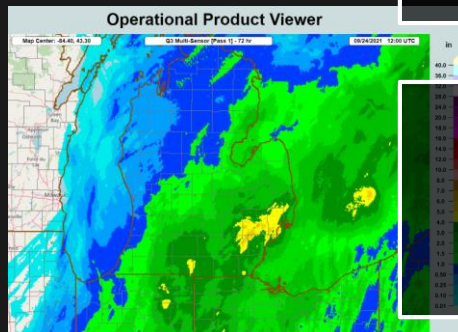


**September 14 Severe Weather**  
[weather.gov/dtx/severeweather091421](https://weather.gov/dtx/severeweather091421)



Howell – Courtesy Jackie Renae

**September 21-23 Heavy Rainfall**  
[weather.gov/dtx/HeavyRain 09212021](https://weather.gov/dtx/HeavyRain%2009212021)







NOWData Observed Weather Climate Prediction and Variability Local Data/Records Climate Resources

### NOWData - NOAA Online Weather Data

1. Location » 2. Product » 3. Options » 4. View »

**View map**

- ✓ Detroit Area
- Flint Area
- Saginaw Area
- Adrian 2 Nne, MI
- Ann Arbor Univ O, MI
- Bad Axe, MI
- Caro Wwtp, MI
- Chelsea, MI
- Detroit City Ap, MI
- Detroit Metropol, MI

**Product**

- ✓ Daily data for a month
- Daily almanac
- Monthly summarized data
- Calendar day summaries
- Daily/monthly normals
- Climatology for a day
- First/last dates
- Temperature graphs
- Accumulation graphs

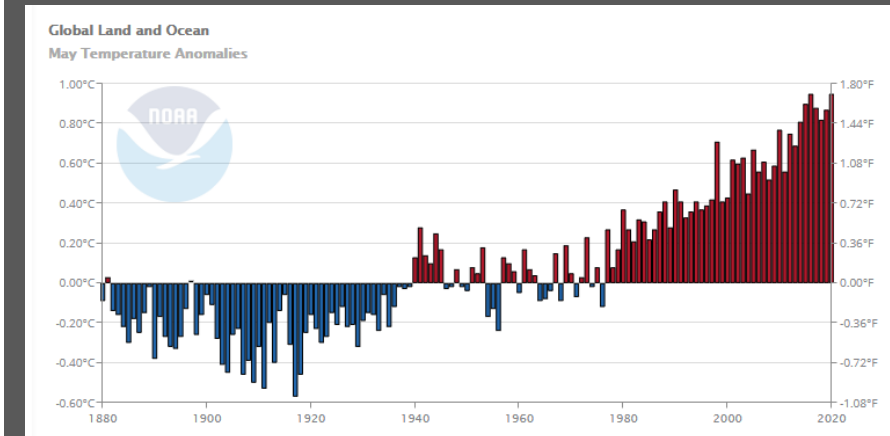
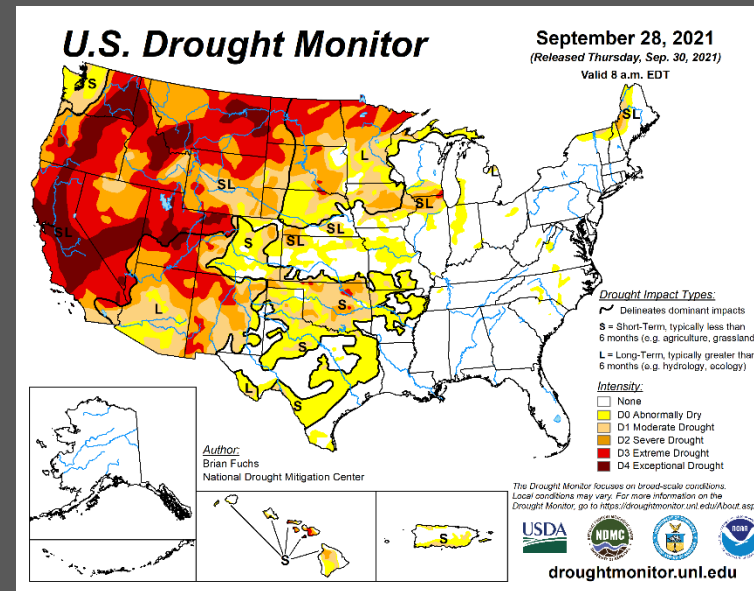
**Date:** 2021-08 **Go**

**Product Description:**  
DAILY DATA FOR A MONTH - daily maximum, minimum and average temperature (degrees F), average temperature departure from normal (degrees F), heating and cooling degree days (base 65), precipitation, snowfall and snow depth (inches) for all days of the selected month. Basic monthly summary statistics are also provided.

**Common questions - Submit a question/comment -**

Powered by **CACIS**  
10/22 Regional Climate Centers

The Applied Climate Information System (ACIS) is a joint project of the Regional Climate Centers, the National Centers for Environmental Information (NCEI) and the National Weather Service. Official data and data for additional locations are available from the Regional Climate Centers and NCEI.



**SE Michigan Climate Products**

[weather.gov/wrh/climate?wfo=dtx](https://weather.gov/wrh/climate?wfo=dtx)

**U.S. Drought Monitor**

[drought.gov/drought/data-maps-tools/current-conditions](https://drought.gov/drought/data-maps-tools/current-conditions)

**NOAA NCEI Climate at a Glance**

[ncdc.noaa.gov/cag/](https://ncdc.noaa.gov/cag/)

Thank you to our COOP and CoCoRaHS volunteer weather observers!