



# Drought Information Statement for Central Alabama

Valid May 14, 2026

Issued By: NWS Birmingham, AL

Contact Information: [sr-bmx.webmaster@noaa.gov](mailto:sr-bmx.webmaster@noaa.gov)

- This product will be updated only if drought conditions change significantly.
- Please see all currently available products at <https://drought.gov/drought-information-statements>.
- Please visit <https://www.weather.gov/bmx/DroughtInformationStatement> for previous statements.

- DROUGHT CONDITIONS REMAIN STEADY ACROSS CENTRAL ALABAMA.





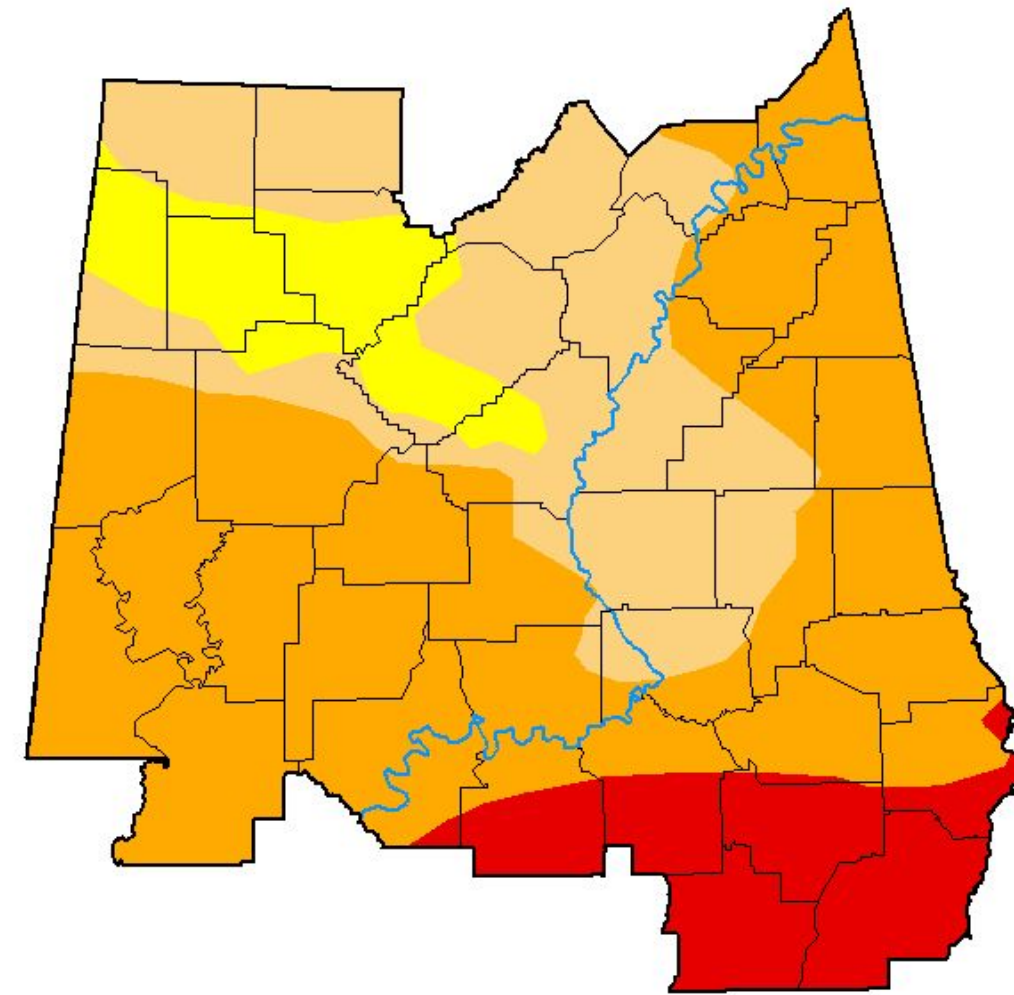
# U.S. Drought Monitor

May 14, 2026  
1:20 PM CDT

Link to the [latest U.S. Drought Monitor](#) for central Alabama

- Drought intensity and Extent
  - D4 Exceptional Drought: None.
  - D3 Extreme Drought: A few counties in the southeast continue to have extreme drought conditions.
  - D2 and D1 Severe/Moderate Drought: Most of the remaining area is experiencing either severe or moderate drought.
  - D0 Abnormally Dry: A few counties in the northwest are now showing abnormally dry conditions.

## U.S. Drought Monitor Birmingham, AL WFO



May 12, 2026

(Released Thursday, May. 14, 2026)

Valid 8 a.m. EDT

Drought Conditions (Percent Area)

	None	D0-D4	D1-D4	D2-D4	D3-D4	D4
<b>Current</b>	0.00	100.00	91.42	64.60	12.29	0.00
<b>Last Week</b> 05-05-2026	0.00	100.00	91.42	66.03	33.45	0.00
<b>3 Months Ago</b> 02-10-2026	25.80	74.20	33.94	20.06	5.94	0.00
<b>Start of Calendar Year</b> 01-06-2026	0.00	100.00	97.13	35.80	3.95	0.00
<b>Start of Water Year</b> 09-30-2025	0.24	99.76	51.39	19.71	2.30	0.00
<b>One Year Ago</b> 05-13-2025	100.00	0.00	0.00	0.00	0.00	0.00

*Intensity:*

- None
- D0 Abnormally Dry
- D1 Moderate Drought
- D2 Severe Drought
- D3 Extreme Drought
- D4 Exceptional Drought

The Drought Monitor focuses on broad-scale conditions. Local conditions may vary. For more information on the Drought Monitor, go to <https://droughtmonitor.unl.edu/About.aspx>

*Author:*

Rocky Bilotta  
NCEI/NOAA



[droughtmonitor.unl.edu](https://droughtmonitor.unl.edu)



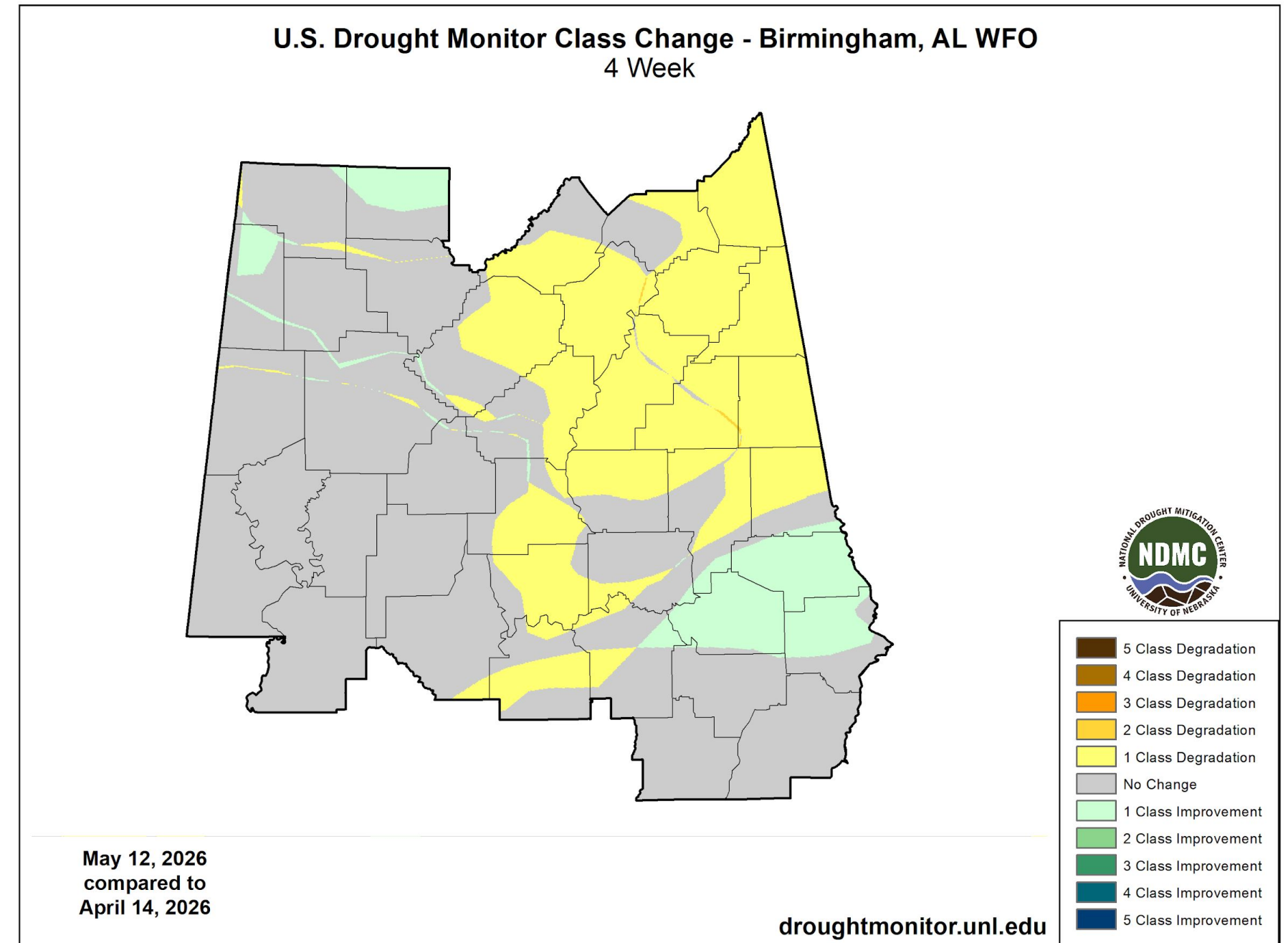


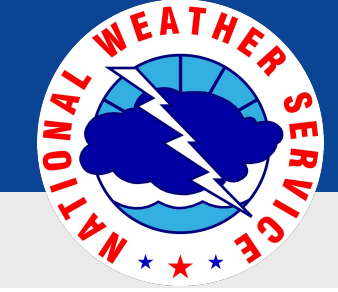
# Recent Change in Drought Intensity

May 14, 2026  
1:20 PM CDT

Link to the latest [4-week change map](#) for central Alabama

- Four Week Drought Monitor Class Change.
  - Drought Worsened: Over the past 4 weeks, the northeast group of counties have had the most change with drought slowly increasing in intensity.
  - No Change and Drought Improvement: Most of the area had some minor improvement or no change within the past 4 weeks.



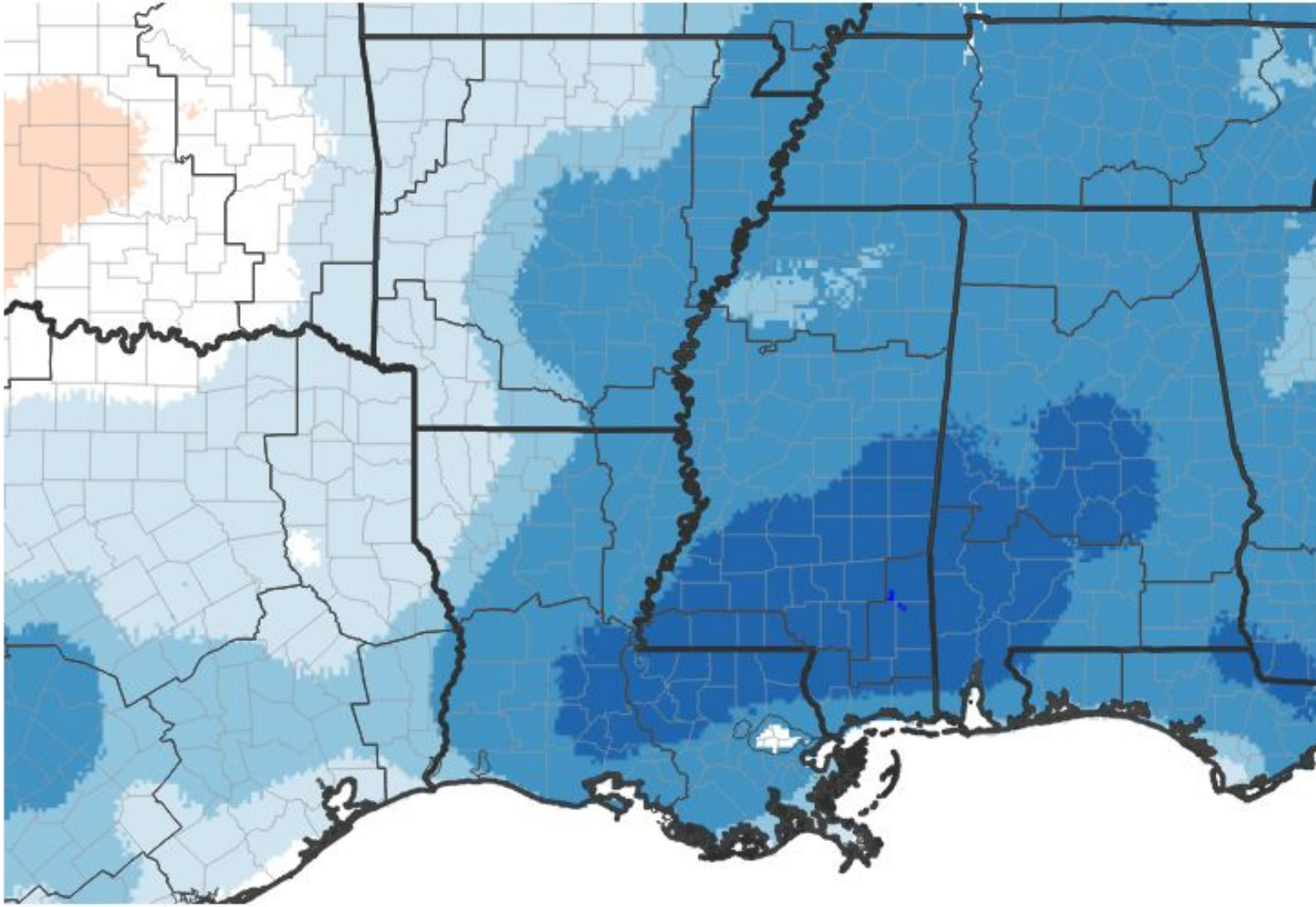


# Temperatures

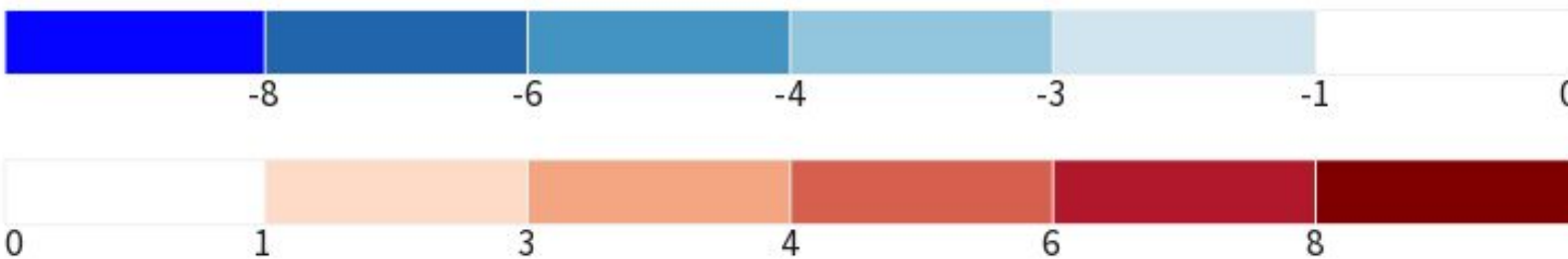
May 14, 2026  
1:20 PM CDT

7 and 30 Day Anomalies

## 7-Day Temperature Anomaly



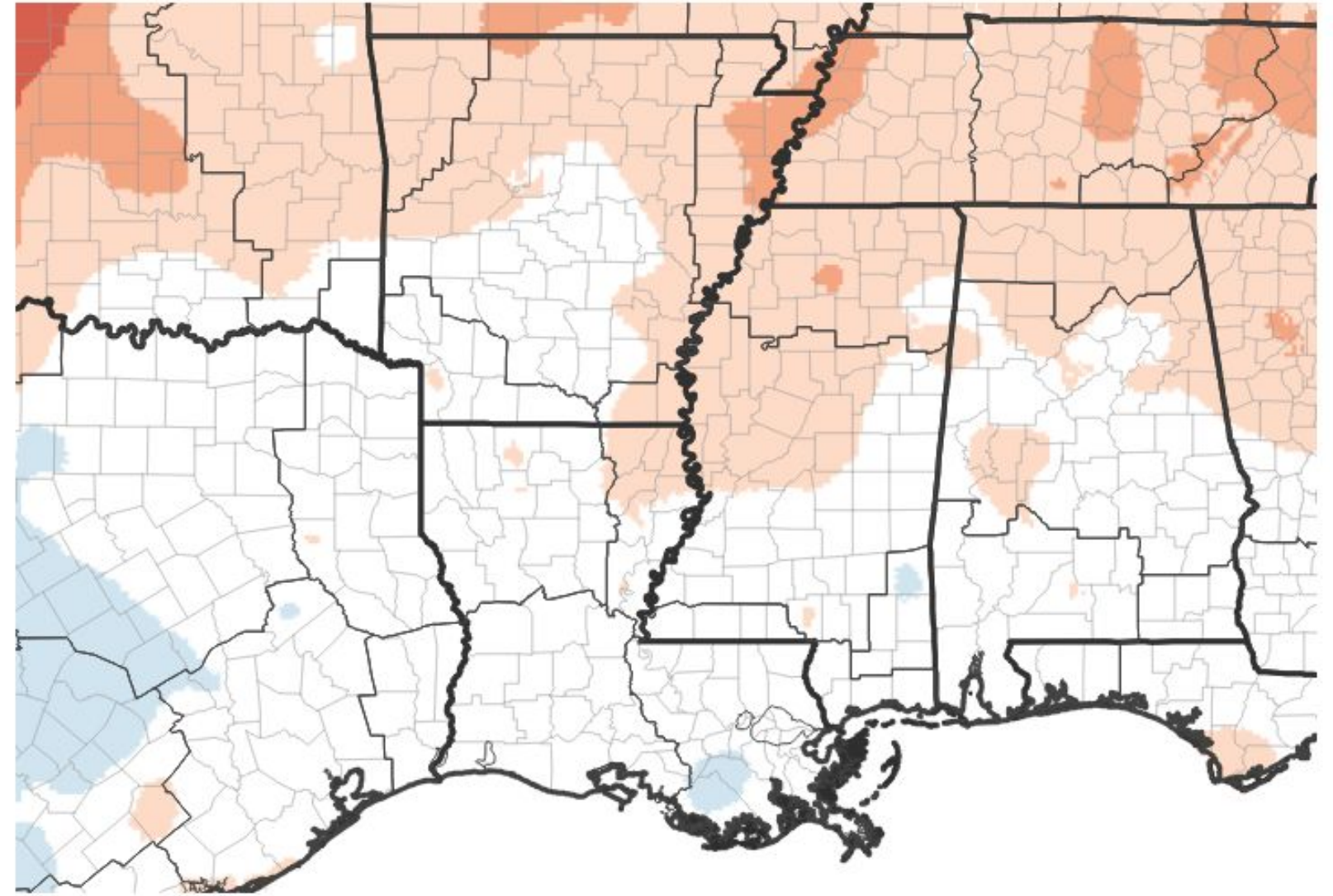
Departure from Normal Max Temperature (°F)



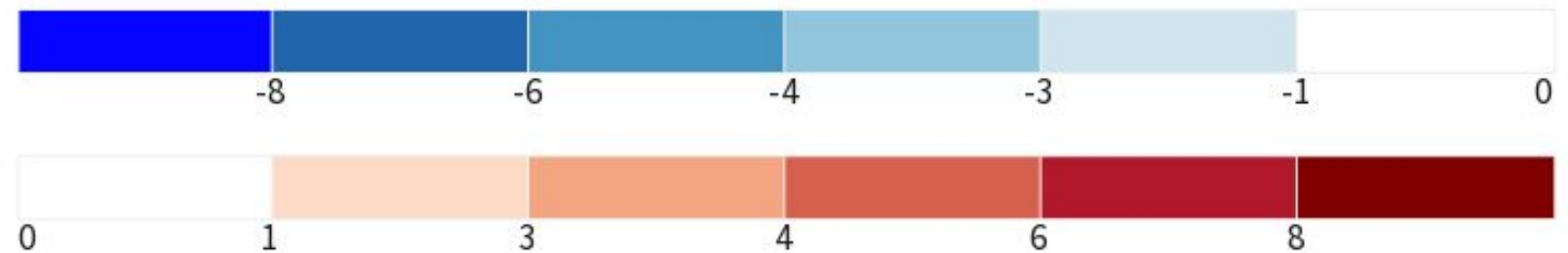
Source(s): NOAA's National Centers for Environmental Information; image courtesy of Drought.gov

Data Valid: 05/10/26

## 30-Day Temperature Anomaly



Departure from Normal Max Temperature (°F)



Source(s): NOAA's National Centers for Environmental Information; image courtesy of Drought.gov

Data Valid: 05/10/26





# Summary of Impacts

May 14, 2026  
1:20 PM CDT

Links: See/submit [Condition Monitoring Observer Reports \(CMOR\)](#) and view the [Drought Impacts Reporter](#)

## Hydrologic Impacts

- Following a few days of wetting rains, streamflows increased temporarily but are now beginning to return back to below normal levels.

## Agricultural Impacts

- In January, the USDA designated 19 Alabama counties as primary natural disaster areas due to the drought conditions impacting row-crop yields and forage availability. Planting in the spring in some areas was delayed.
- Much of Alabama's pasture and rangeland is rated in "poor" or "very poor" conditions.

## Fire Hazard Impacts

- There has been an increased amount of wildfire activity across Central Alabama within the last two months and the statewide fire alert remains in effect at this time.

## Other Impacts

- None

## Drought Mitigation Actions

- Please refer to your municipality and/or water provider for mitigation information.

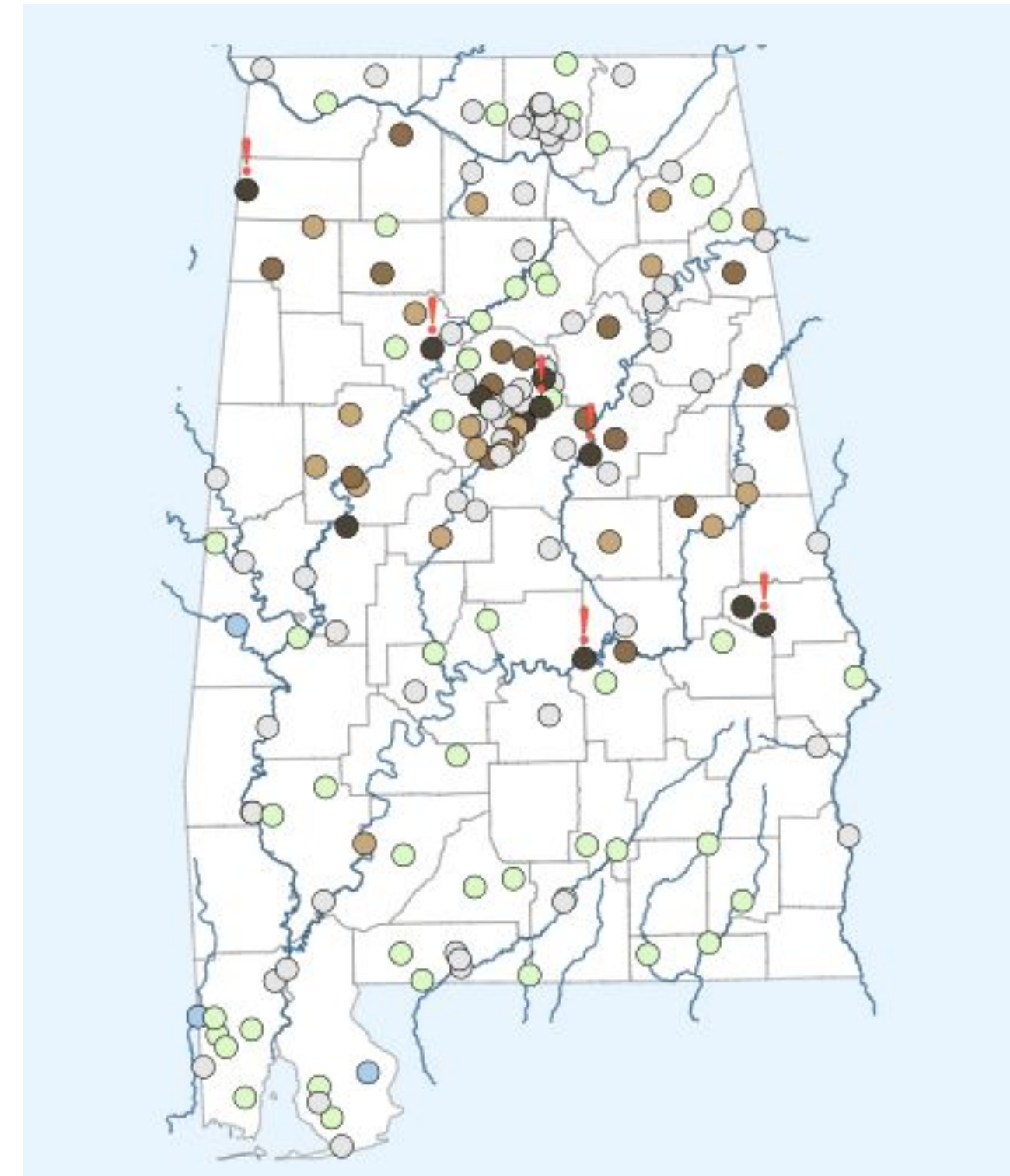




# Hydrologic Conditions & Impacts

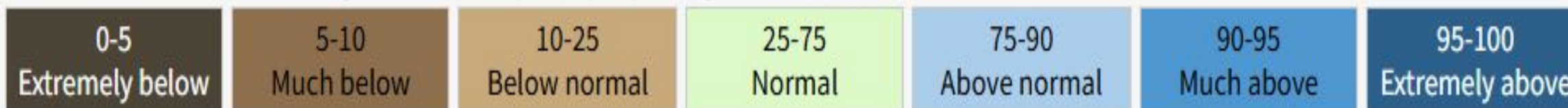
May 14, 2026  
1:20 PM CDT

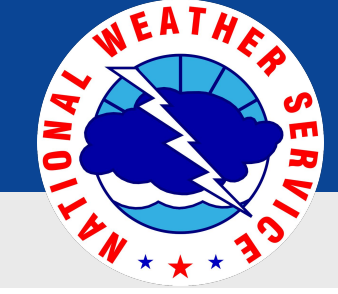
- The effects from last weeks rainfall is slowly diminishing. Below normal streamflows will return as temperatures rise and dry weather continues.
- Some navigation issues may be possible for barge traffic on the lower Alabama River.
- Additional information can be found here:
  - <https://waterdata.usgs.gov/state/Alabama/>



## Current condition estimate

The condition estimate is based on the latest continuous data value recorded in relation to historic daily averages expressed as percentiles. The percentiles show how a value relates to all the other values for a given day of the year and indicate what percentage of days have an average (mean) value less than the latest recorded value. Extreme conditions are indicated when the latest continuous data value is outside of the percentile range of historic daily averages, meaning current conditions are above the highest or below the lowest daily average ever recorded for this day of the year.

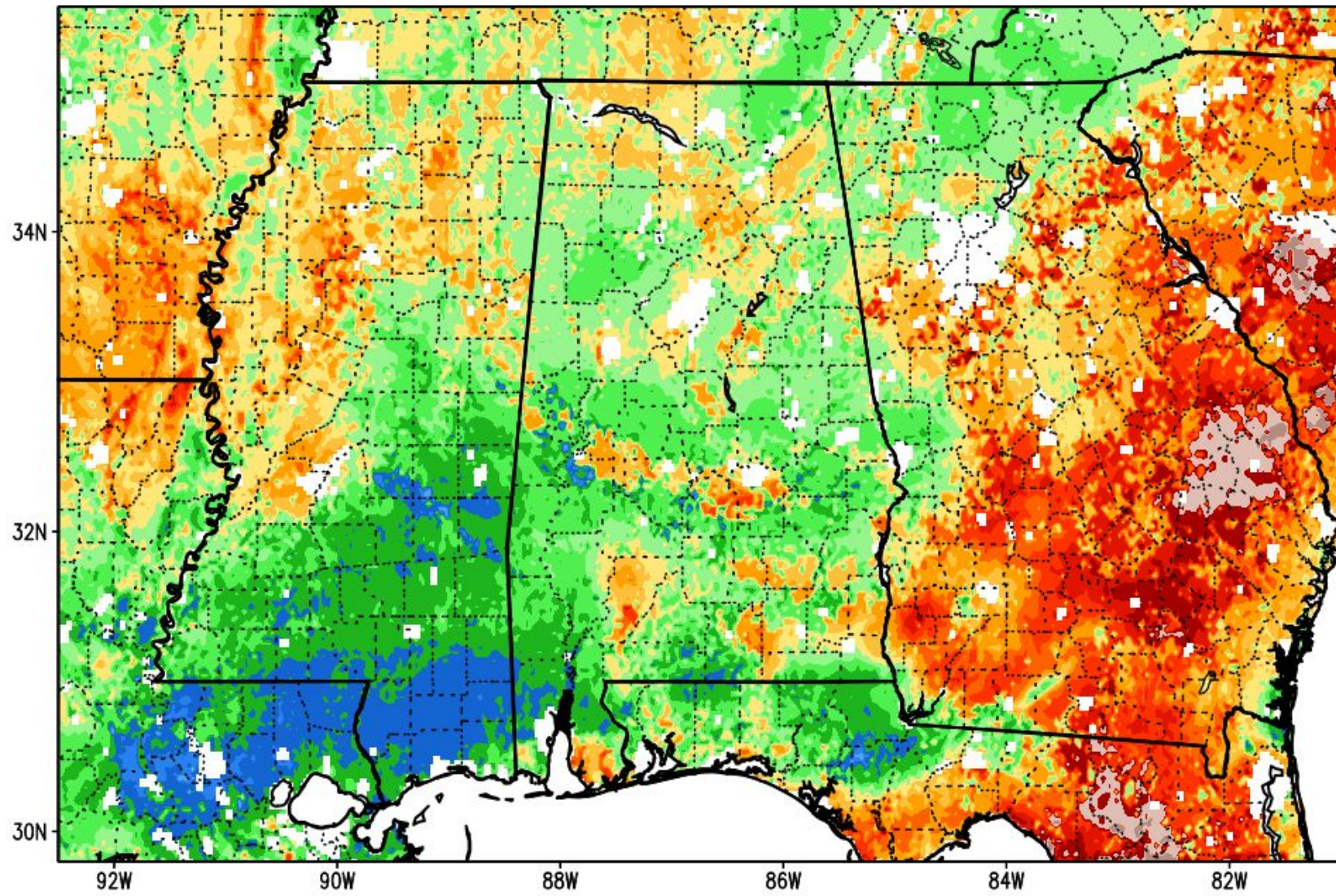




# Agricultural Impacts

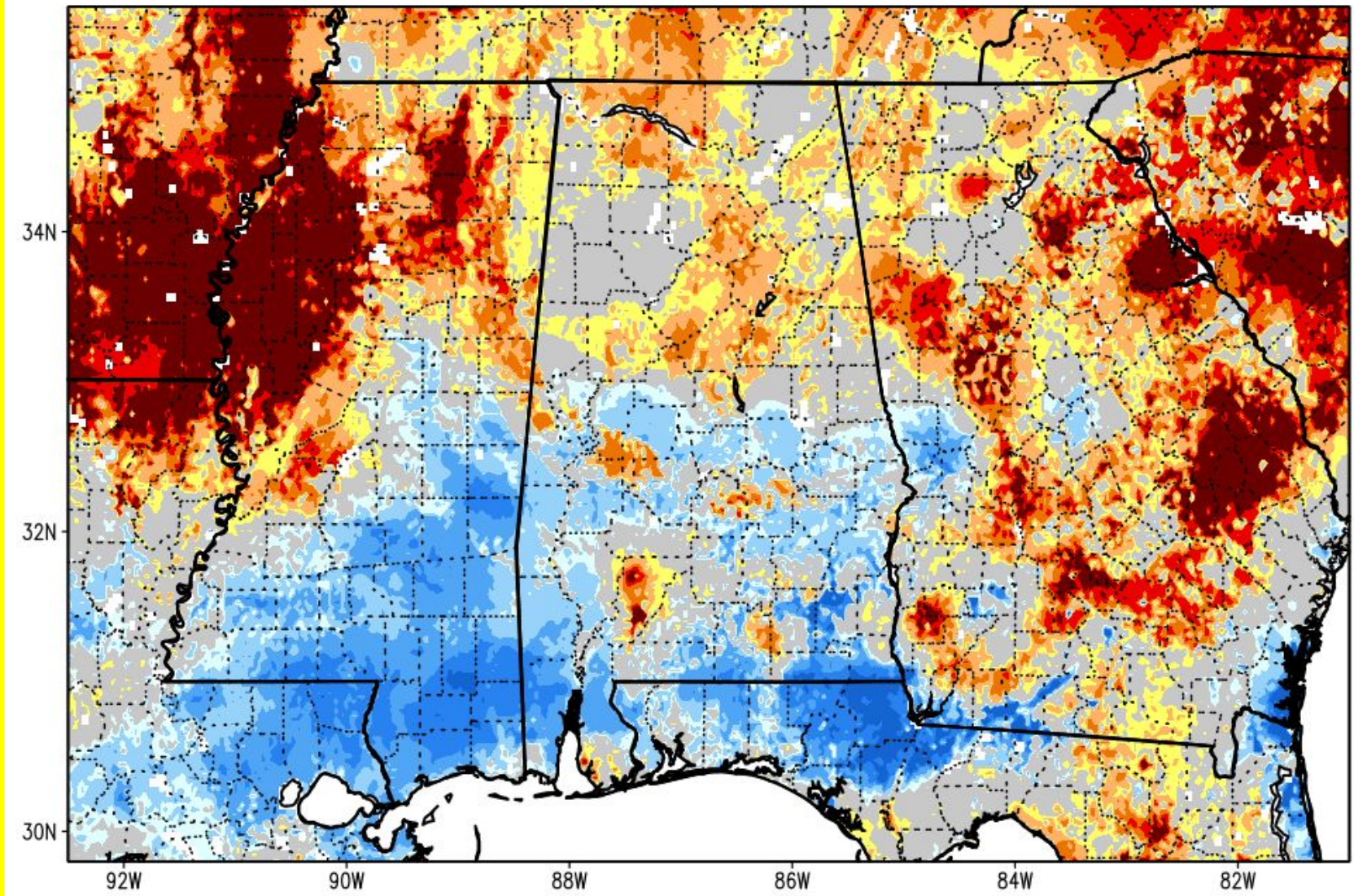
May 14, 2026  
1:20 PM CDT

0-100 cm Relative Soil Moisture (available water; %) valid 00z 14 May 2026  
Precipitation in previous hour (1,2,5,10,15,20,25 mm contours)



\*\*NOTE\*\*  
\*\*Experimental\*\* 5 10 15 20 25 30 35 40 45 50 55 60 65 70 75 80 85 90 95

SPoRT-LIS 0-100 cm Soil Moisture percentile valid 14 May 2026



\*\*NOTE\*\*  
\*\*Experimental\*\* 2 5 10 20 30 70 80 90 95 98

- Recent heavy rainfall has resulted in some temporary soil moisture improvements across much of the area.

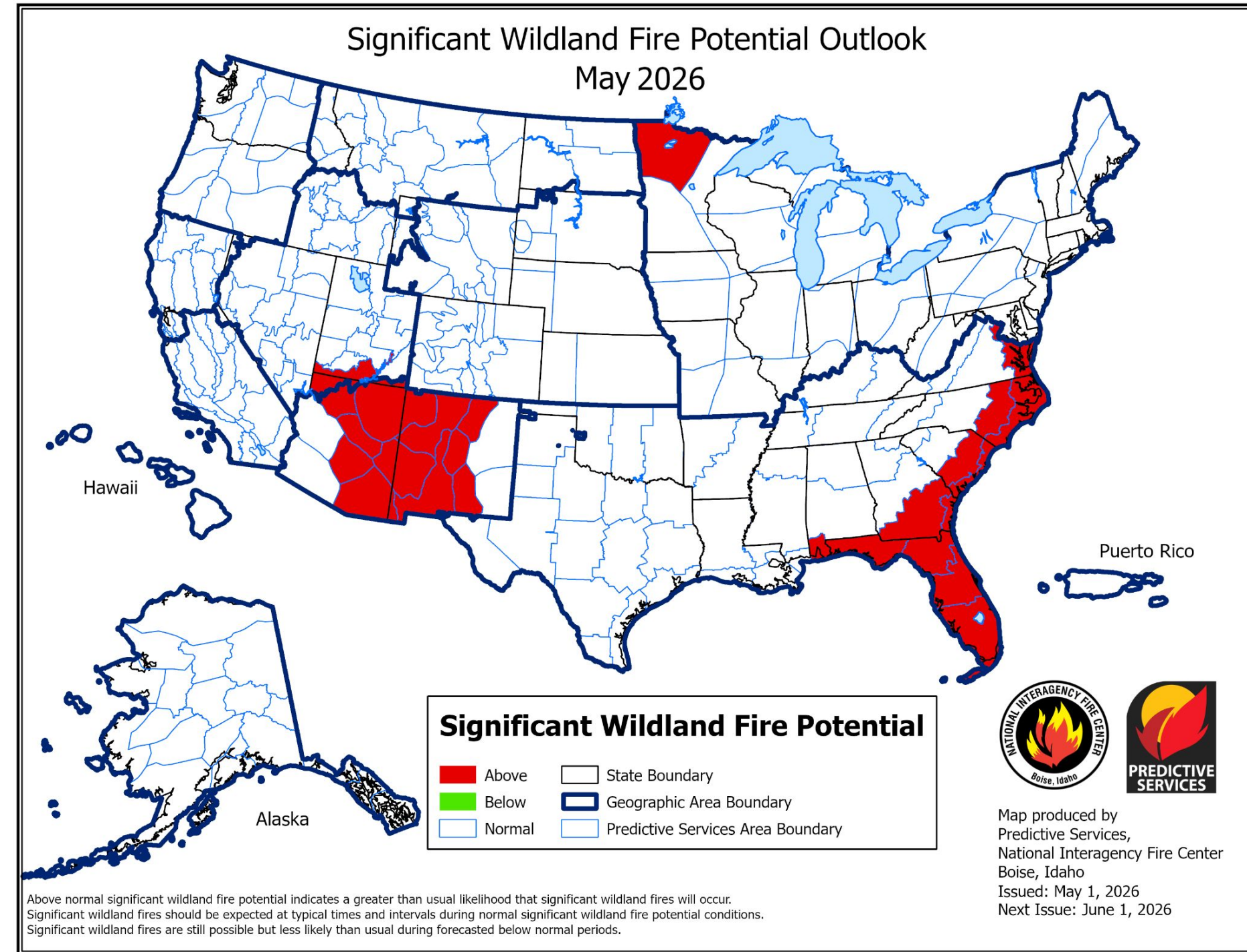


# Fire Hazard Impacts

May 14, 2026  
1:20 PM CDT

Link to [Wildfire Potential Outlooks from the National Interagency Coordination Center](#).

- There have been an increase of wildfires across central Alabama over the past month due to the drought conditions.
- The Alabama Forestry Commission (AFC) has issued a statewide Fire Alert.
  - [Fire Alert](#)
- Several local municipalities have issued their own “no burn” notices.
- May features an above average potential for fires for coastal Alabama.

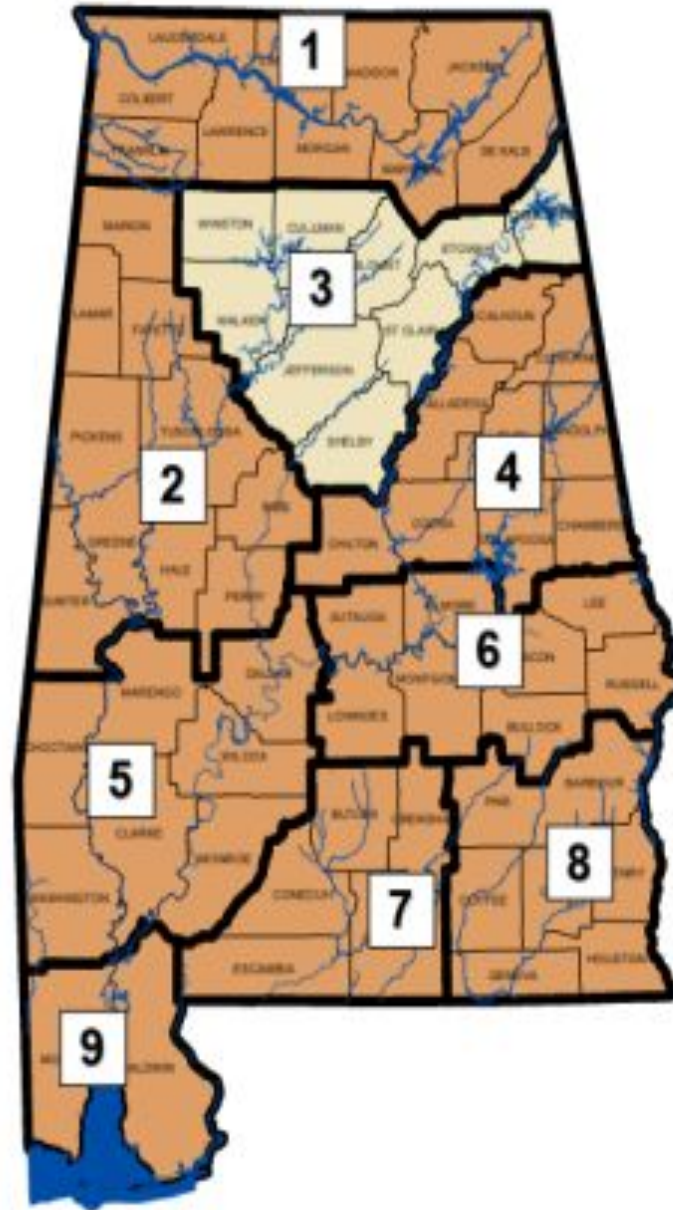




# State Alerts

May 14, 2026  
1:20 PM CDT

- The latest Alabama drought declaration map has all of Alabama in either an watch or warning status.
- Click the link at the bottom of the page for more information and any new updates.



Legend
No Drought Declaration
Advisory
Watch
Warning
Emergency

Prolonged precipitation deficits along with extremely low streamflows and groundwater conditions have led to rapidly deteriorating drought conditions across the state. OWR will continue monitoring our water resources and update this Declaration as needed.

Water managers and public water system customers are encouraged to follow their local water system's recommendations regarding water use. All water users should make prudent decisions on their water use to protect available resources.

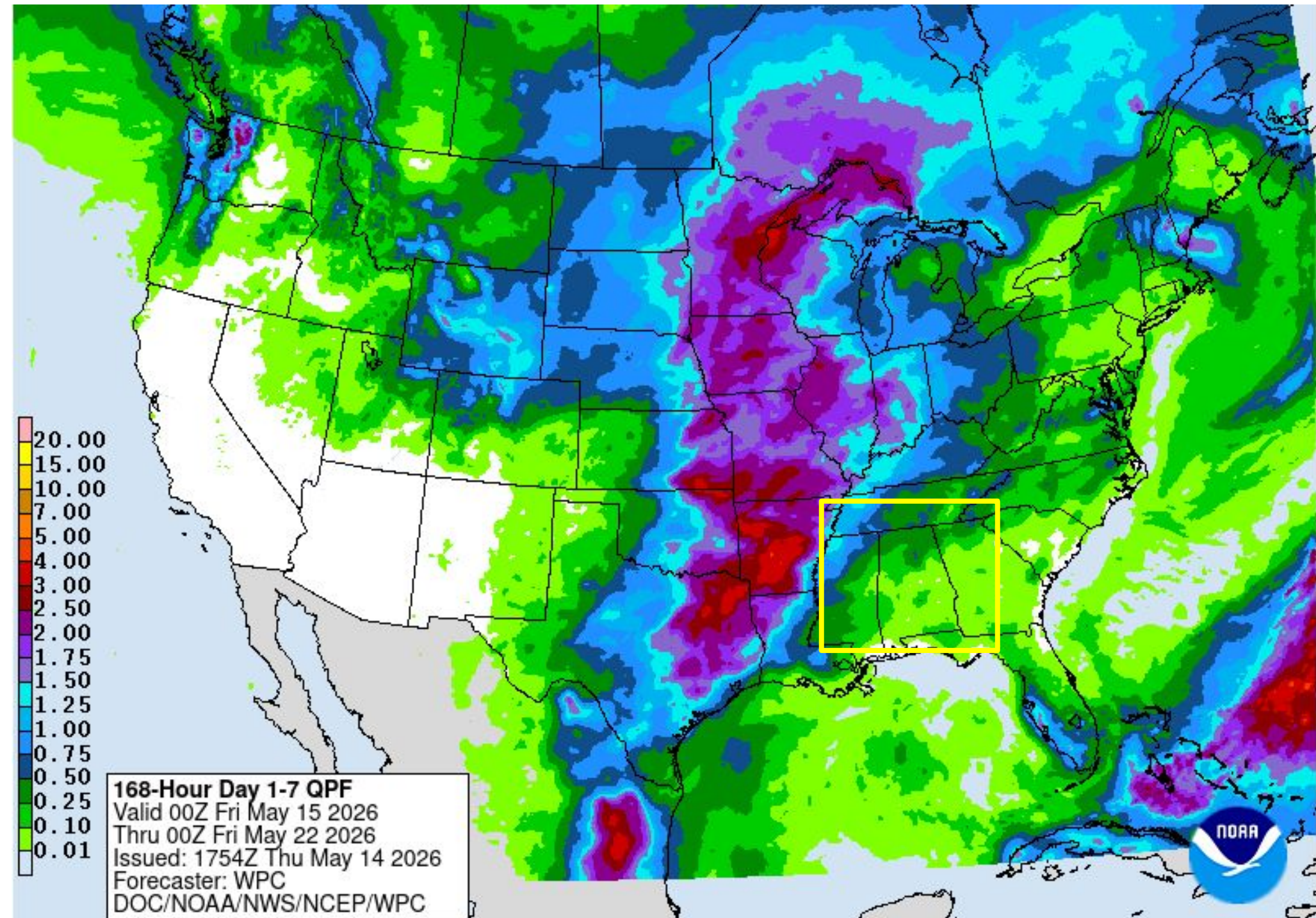
Image caption: [Alabama drought declaration map image](#)



# Seven Day Precipitation Forecast

May 14, 2026  
1:20 PM CDT

- The next 7 days will feature mostly dry conditions across Central Alabama. Some periods of light, scattered showers will be possible towards the end of the 7 day period.





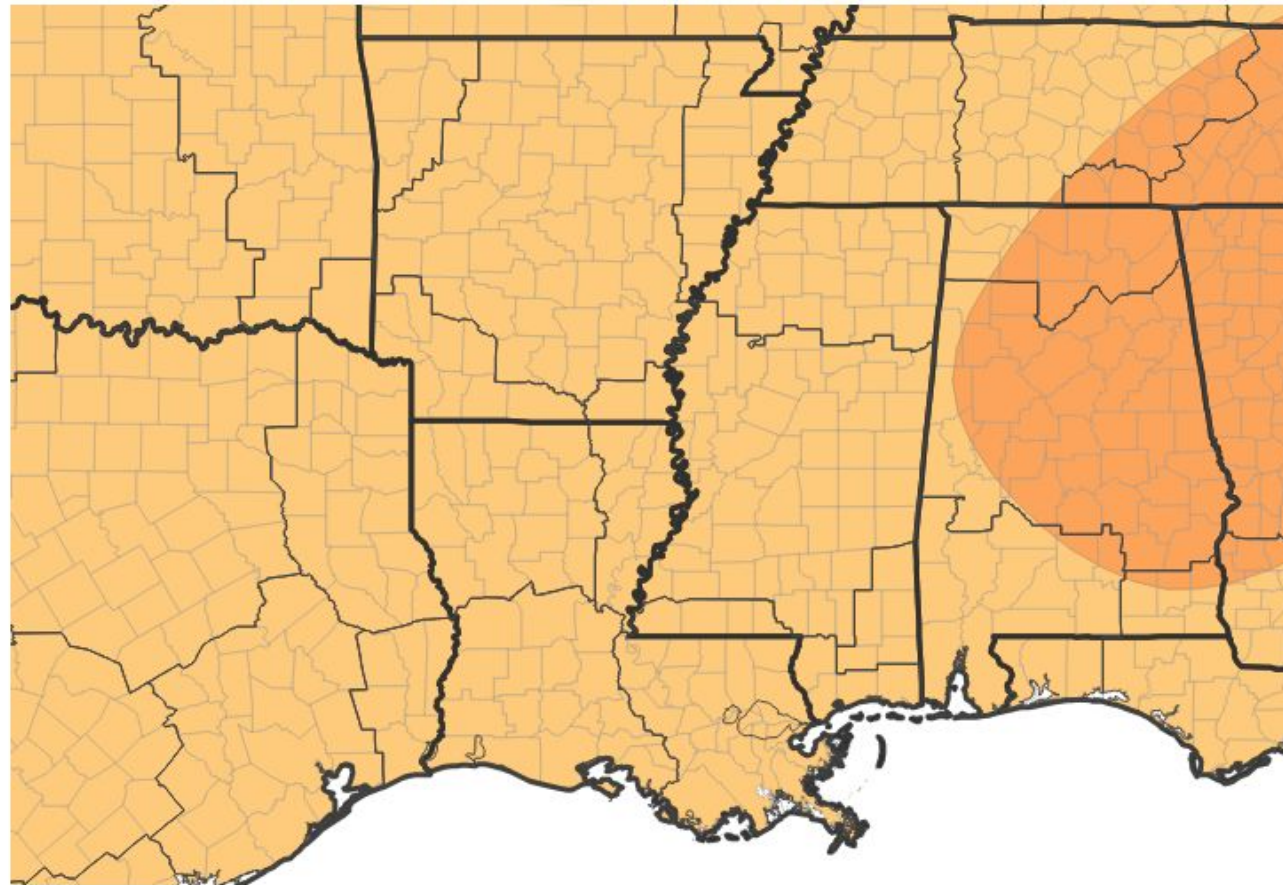
# Medium Range Outlook

May 14, 2026  
1:20 PM CDT

The latest monthly and seasonal outlooks can be found on the [CPC homepage](#)

- The seasonal outlook for the next 3 month period is calling for medium chances of above average temperatures.
- Rainfall probabilities during this same time-frame are calling for near normal chances across the north with slightly higher than average chances in the south.

Seasonal (3-Month) Temperature Outlook for May 1, 2026–July 31, 2026



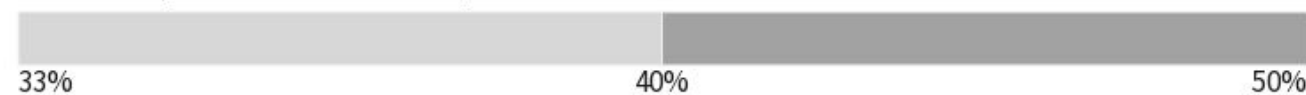
Probability of Below-Normal Temperatures



Probability of Above-Normal Temperatures

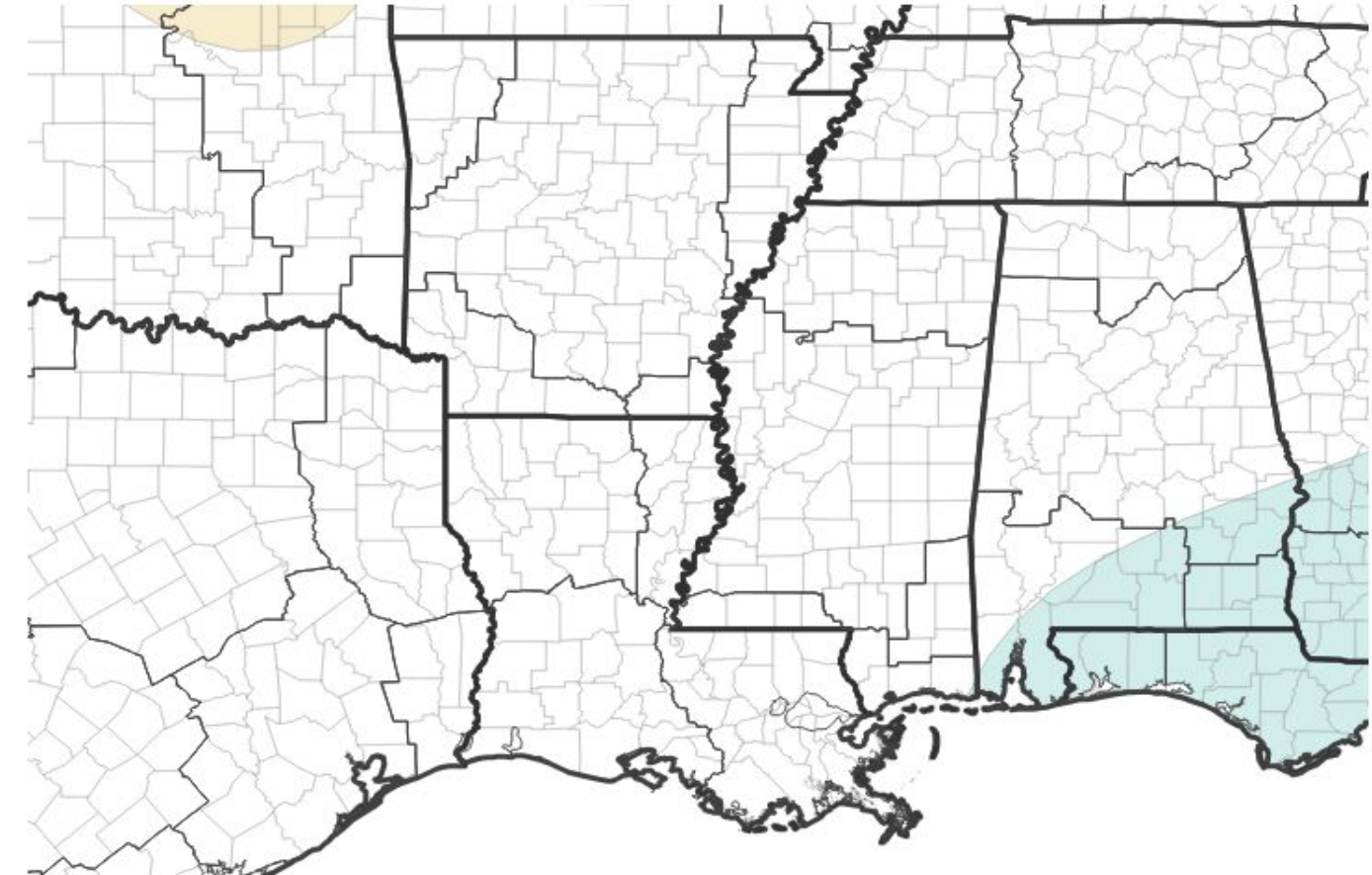


Probability of Near-Normal Temperatures



Source(s): Climate Prediction Center; image courtesy of Drought.gov Last Updated: 04/16/26

Seasonal (3-Month) Precipitation Outlook for May 1, 2026–July 31, 2026



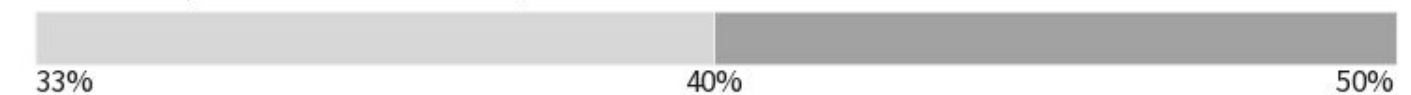
Probability of Below-Normal Precipitation



Probability of Above-Normal Precipitation



Probability of Near-Normal Precipitation



Source(s): Climate Prediction Center; image courtesy of Drought.gov Last Updated: 04/16/26





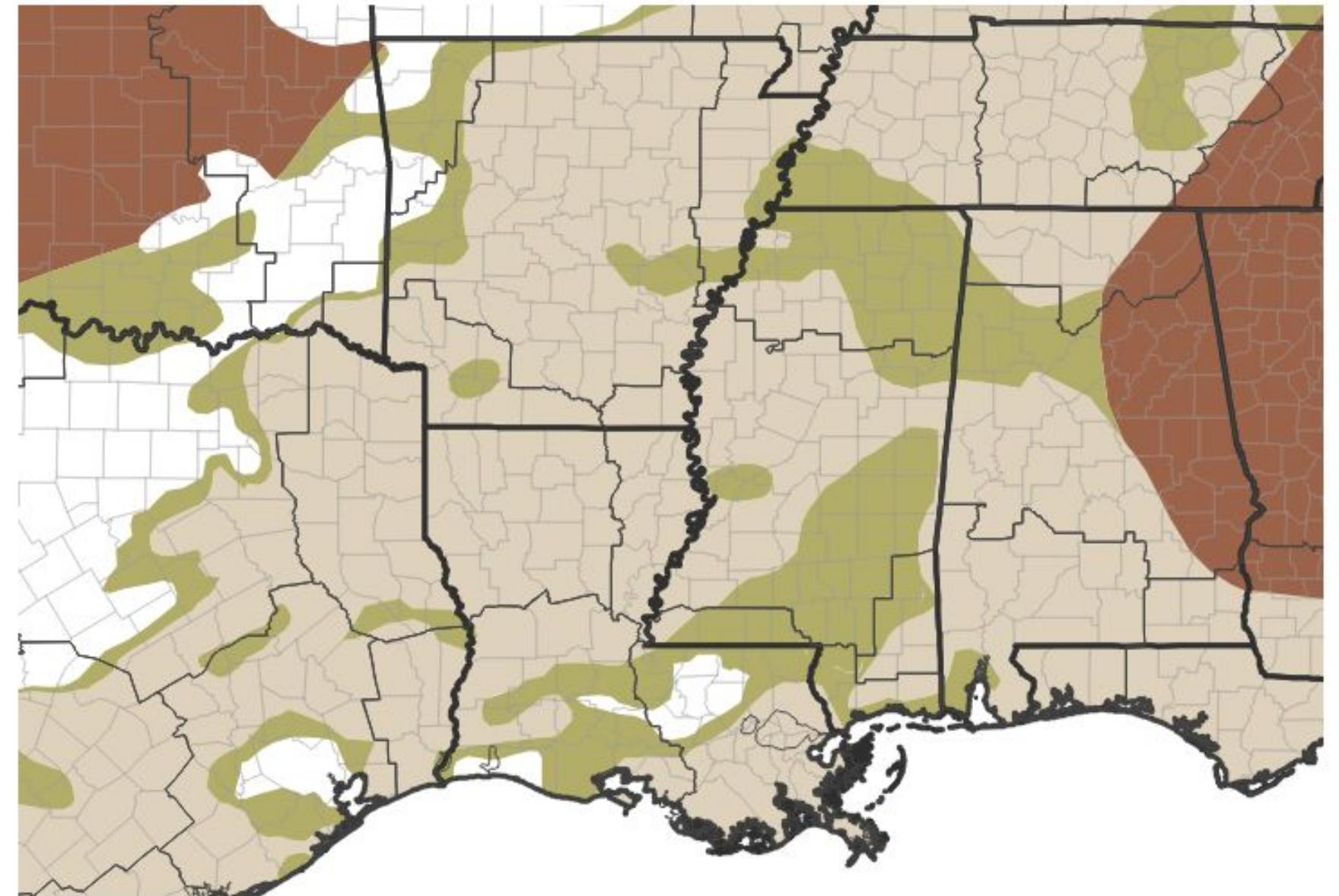
# Drought Outlook

May 14, 2026  
1:20 PM CDT

The latest monthly and seasonal outlooks can be found on the [CPC homepage](#)

- The latest seasonal outlook released by the CPC on April 30th and valid through July, shows a mix of improvement and persistence across the area.

**Seasonal (3-Month) Drought Outlook for April 30, 2026–July 31, 2026**



**Drought Is Predicted To...**



Source(s): Climate Prediction Center; image courtesy of Drought.gov

Last Updated: 04/30/26

