

2024 MINNESOTA FIRE WEATHER OPERATING PLAN

NWS Offices

Signed by Daniel Hawblitzel, MIC NWS Twin Cities/Chanhassen, MN

Land Management Agencies

Signed by Greg Carlson, MNICS Task Force

Minnesota Department of Natural Resources (MN DNR)

USDA Forest Service - Region 9 (Superior and Chippewa National Forests)

DOI US Fish and Wildlife Service

DOI National Park Service

DOI Bureau of Indian Affairs.





Minnesota Fire Weather Operating Plan Table of Contents

	PAGE
Introduction	2
I. Service Areas and Organizations	3
II. Services Provided by the National Weather Service	4
1. Fire Weather Watches and Red Flag Warnings	4
2. Spot Forecasts	7
3. Fire Weather Planning Forecast	10
4. NFDRS Point Forecast (FWM)	12
5. Other Routine NWS Services	13
6. Incident Meteorologist (IMET) Services	14
7. Training	14
8. NWS Notifications to Central Region Headquarters	15
III. Wildland Fire Agency Services and Responsibilities	15
1. Operational Support and Predictive Services	15
2. Agency Computer Systems	15
3. Fire Weather Observations and Stations	15
4. Reimbursement for NWS Provided On-Site Support and Training	16
IV. Joint Responsibilities	17
V. Effective Date of the AOP	17

VI. Agency Signatures	17
VII. Appendix	18
A. Smoke Management	19
B. Haines Index	20
C. NWSchat and MN Fire Weather Coordination Room	
D. NOAA Weather Radio	21
E. Phone Directory	23

FIRE WEATHER OPERATING PLAN FOR MINNESOTA NATIONAL WEATHER SERVICE - February, 2023



INTRODUCTION

This document serves as the Minnesota Fire Weather Operating Plan (AOP) for the National Weather Service (NWS) and the interagency fire management community with fire management responsibility in Minnesota. The relationship between the NWS and land management agencies is established in the following documents:

[Interagency Agreement for Meteorological Services](#) (National Agreement).
[Eastern Area Mobilization Guide](#)
[NWS Directives 10-4 Series](#)

This AOP provides specific policy and procedure information used to provide forecast services to the fire management community in the State of Minnesota. In support of the Eastern Area Coordination Center, the EACC meteorologist will act as a liaison between the interagency fire management community and the NWS.

This Operating Plan is updated annually, and is reviewed by representatives of the NWS and each user agency prior to the onset of the spring fire season. All parties should have a copy of this plan available for reference purposes. Each fire management agency will be responsible for any duplication and further distribution of this plan to fire management personnel. The Operating Plan is also available in the Fire Weather section of NWS web sites.

I. SERVICE AREA AND ORGANIZATIONS

A. PARTICIPATING AGENCIES

1. DOC/NOAA - National Weather Service
2. USDA Forest Service - Region 9 Superior and Chippewa National Forests
3. DOI National Park Service
4. DOI US Fish and Wildlife Service
5. DOI Bureau of Indian Affairs
6. Minnesota Department of Natural Resources; MNDNR

NATIONAL WEATHER SERVICE

There are six NWS offices that provide fire weather forecasts to the State of Minnesota:
www.weather.gov

TWIN CITIES, MN (Chanhassen) NWS Forecast Office

Public Phone: 952-361-6670

Fire Weather Program Leader.....Mike Griesinger

michael.griesinger@noaa.gov

DULUTH, MN NWS Forecast Office

Public Phone: 218-729-6697

Fire Weather Program Leader...Woody Unruh

woodrow.unruh@noaa.gov

GRAND FORKS, ND NWS Forecast Office

Public Phone: 701-795-5198

Fire Weather Program Leader.....Brad Hopkins

brad.hopkins@noaa.gov

LA CROSSE, WI NWS Forecast Office

Public Phone: 608-784-8292

Fire Weather Program Leader.....Jeff Makowski

jeff.makowski@noaa.gov

SIoux FALLS, SD NWS Forecast Office

Public Phone: 605-330-4247

Fire Weather Program Leader.....Kyle Weisser

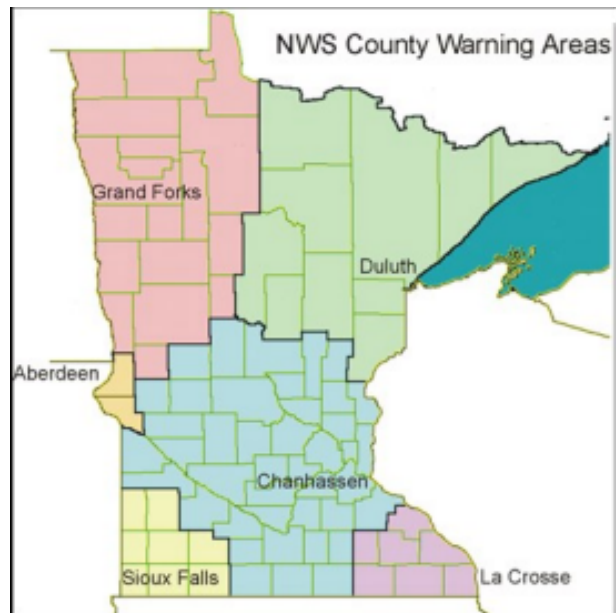
kyle.weisser@noaa.gov

ABERDEEN, SD NWS Forecast Office

Public Phone: 605-225-0519

Fire Weather Program Leader.....Kari Fleegel

kari.fleegel@noaa.gov



II. SERVICES PROVIDED BY THE NATIONAL WEATHER SERVICE

BASIC SERVICES - This section follows the National Weather Service Directive NWSI 10-401: <http://www.nws.noaa.gov/directives/sym/pd01004001curr.pdf>

Local changes to the services provided in Minnesota are coordinated at the Minnesota State Fire Weather Coordination Meeting held annually in December.

ROUTINE FIRE WEATHER FORECASTS ISSUED BY THE NWS

- Fire Weather Watches and Red Flag Warnings
- SPOT Forecasts
- Fire Weather Planning Forecast
- National Fire Danger Rating System Forecast (NFDRS)

Routine forecasts usually begin in March or early April and end in November or December. User agencies will collaborate with the servicing NWS office to begin or end the text forecasts. Fire weather forecast elements are generated daily and available on the local NWS websites year round.

1. FIRE WEATHER WATCHES AND RED FLAG WARNINGS

NWS offices will issue Fire Weather Watches and Red Flag Warnings when the combination of dry fuels and weather conditions support extreme fire danger and/or fire behavior. The NWS forecaster on duty will coordinate with a representative from MNICS (see directory) prior to issuing a Fire Weather Watch or Red Flag Warning. If a Fire Weather Watch is currently in effect, it means that fuel conditions have already been coordinated with land managers and no further coordination is required if a Red Flag Warning is needed due to changes in forecast weather conditions.

During situations of borderline fuel or weather conditions with respect to needing a Fire Weather Watch/Red Flag Warning, terminology such as “NEAR CRITICAL FIRE WEATHER CONDITIONS” is strongly encouraged in NWS products. Avoid the phrase “Red Flag” or “Extreme Fire Danger” if a Red Flag Warning is not in effect so as not to suggest the fuels are critical when the fuels are not critical.

A **Fire Weather Watch** is issued when there is reasonable confidence that conditions to warrant a warning will be met within 18 to 72 hours. A Fire Weather Watch should not remain in effect through the TODAY period. It must either be upgraded to a Red Flag Warning or canceled. If the Watch is canceled, the NWS can issue a Special Weather Statement (SPS) to highlight the heightened fire weather concerns.

A **Red Flag Warning** is issued when there is high confidence that conditions to warrant a warning will be met within 48. A Red Flag Warning may span over a multiple day time period if Red Flag conditions are expected to be attained consecutive days, with limited RH recovery expected during the overnight hours.

Call order for RFW Fuel Coordination

PRIMARY CONTACT NUMBERS Cell (C), Work (W), Home (H)	Travis Verdegan 218-244-5690 (C), 715-415-1134 (H)
BACKUP CONTACT	MNCC Center Manager—Ryan Kingsley 218-322-2738 (W), 218-451-8628 (C)
TERTIARY CONTACT	MNCC Duty Officer (MN Interagency Coordination Center) 218-327-4558

RED FLAG WARNING / FIRE WEATHER WATCH CRITERIA

- **Sustained 20 ft winds (RAWS level) of at least 20 mph or frequent gusts of at least 25 mph.**
In the Red River Valley along the western border of Minnesota (Grand Forks forecast area) and in the southwest corner of the state (Sioux Falls forecast area) sustained winds must be at or above 25 mph.
- **Minimum Relative Humidity (RH) of 25% or less.**
Land managers may request that a Red Flag Warning be issued when all weather criteria are not expected to be met. This would include situations when fuels are critically dry or in a high wind situation when the humidity threshold may not be reached.

Other Factors to Consider

- Potential for minimum relative humidities to be less than 15% (results in 1 hour fuel moisture and FPMC down around 2% or 3%)
- Fire Danger Rating from the MNDNR of HIGH or EXTREME. Viewable at: https://www.dnr.state.mn.us/forestry/fire/firerating_restrictions.html
- NFDRS/CFDRS output provides information on several fire indices viewable at: <https://glff.mesowest.org/map/>

Generally, a BI > 84 and ERC > 40 imply critically dry fuels.

Red Flag Content/Format

The Watch or Warning headline will specify:

The valid time, the area affected (by county or aerial description), and critical weather elements leading to the headline.

```
URGENT - FIRE WEATHER MESSAGE
National Weather Service Twin Cities/Chanhassen MN
404 AM CDT Sat May 2 2020

...Critical Fire Weather Conditions Expected This Afternoon...

.Dry and breezy conditions are expected today. Sustained northwest
winds of 20 to 25 mph with gusts near 30 mph are likely. Humidity
levels will range from 15 to 25 percent by the afternoon. The Red
Flag Warning covers most of central Minnesota.

MNZ041>045-047>052-055>059-021715-
/O.UPG.KMPX.FW.A.0003.200502T1700Z-200503T0000Z/
/O.NEW.KMPX.FW.W.0002.200502T1700Z-200503T0000Z/
Douglas-Todd-Morrison-Mille Lacs-Kanabec-Stevens-Pope-Stearns-
Benton-Sherburne-Isanti-Swift-Chippewa-Kandiyohi-Meeker-Wright-
404 AM CDT Sat May 2 2020

...RED FLAG WARNING IN EFFECT FROM NOON TODAY TO 7 PM CDT THIS
EVENING FOR VERY LOW HUMIDITY AND BREEZY WINDS FOR MOST OF CENTRAL
MINNESOTA...

The National Weather Service in Twin Cities/Chanhassen has issued
a Red Flag Warning, which is in effect from noon today to 7 PM
CDT this evening. The Fire Weather Watch is no longer in effect.

* AFFECTED AREA...Much of western and central Minnesota.

* WIND...Northwest sustained 20 to 25 mph, with gusts near 30 mph.

* HUMIDITY...As low as 15 to 25 percent.

* IMPACTS...Any fires that develop will likely spread rapidly.
  Outdoor burning is not recommended.

PRECAUTIONARY/PREPAREDNESS ACTIONS...

A Red Flag Warning means that critical fire weather conditions
are either occurring now...or will shortly. A combination of
strong winds...low relative humidity...and warm temperatures can
contribute to extreme fire behavior.
```


The following list of products will disseminate the Watch or Warning:

Fire Weather Planning Forecast (FWF)

A headline needs to be included at the top of each forecast segment where a Fire Weather Watch or Red Flag Warning is active. The FWF needs to be updated anytime there is a change in watch/warning status for an area.

NOAA Weather Radio

Following local policy.

Hazardous Weather Outlook (HWO)

Graphical Weather Story

Decision Support Packets

Area Forecast Discussion (AFD)

SPOT Forecasts

Headline must be included for Spots issued for areas in which a Watch/Warning is in effect

Social Media

The Fire Danger and issuance of a Watch or Warning may be shared on various social media websites.

Civil Emergency Message

In the event of a large or rapidly growing wildfire that is posing a threat to life or property, a land manager or other official may request the issuance of a Civil Emergency Message to communicate the threat of the wildfire and any evacuation orders.

Media

Land agencies will normally handle ALL media questions about fire potential and danger. The NWS will answer questions *only about weather conditions*, and should not comment on fire behavior or fuel conditions.

2. SPOT FORECASTS

SPOT Forecasts are **site specific forecasts** issued by NWS offices in support of wildfire, natural resource management, or public safety. The NWS will attempt to process all SPOT Forecast requests within 20 minutes. These forecasts aid officials in

properly planning for and protecting life and property during wildland fires. SPOT forecasts are also issued for hazardous materials incidents, marine incidents, search and rescue response and other threats to public safety.

Generally, SPOT Forecasts for prescribed burns are requested a few hours ahead of the project. However, they can be requested up to one day in advance to assist with planning future burns. A longer term outlook and/or forecast for a prescribed burn region can be requested from Steve Marian with the EACC. (see directory for contact info)

SPOT forecasts for a wildfire will be treated with a priority similar to that of severe weather warnings. It is the responsibility of the requestor to indicate that the request is for wildfire suppression.

NWS offices will provide spot forecast service under the following circumstances:

- Upon request of any federal, state, tribal, or local official who represents that the SPOT forecast is required to carry out their wildland fire management responsibilities in coordination with any federal land management agency participating in the Interagency Agreement.
- Upon request of any public safety official who represents the spot forecast is essential to public safety, e.g. due to the proximity of population centers or critical infrastructure.
- In support of [Homeland Security Presidential Directive #5 \(HSPD 5\)](#).

SPOT Content and Format –

The standard format for SPOTS includes: headlines (mandatory when Red Flag Warning or Fire Weather Watch in effect), discussion, sky/weather, temperature, relative humidity, and 20 foot wind for 3 forecast periods. Optional elements may also be provided. The content and number of forecast periods may be different, as determined by the requestor. To aid in making smoke management decisions, requestors may request Hysplit trajectory data as part of their Spot Forecast request.

If an update is made, the forecaster will call the contact number listed on the spot forecast request. Feedback from land management personnel is highly encouraged during or after the burn and can be submitted via the SPOT website or by emailing the Fire Weather Focal Point (see directory for contact info).

Requesting a SPOT Procedure –

- The primary way to submit a SPOT request is through the NWS SPOT webpage at [https:// www.weather.gov/spot/request/](https://www.weather.gov/spot/request/)
- Spot requests can be monitored and viewed at

<https://www.weather.gov/spot/monitor>

- If this site is slow, you can use <https://www.weather.gov/spot/monitor/?&wfo=xxx> (where XXX is the NWS office identifier: DLH, FGF, etc.) to view only spots a particular forecast office has received
- If internet access is not available, the land manager may also call or send a fax to the local NWS office with the appropriate information for the SPOT request.
- Needed information for a SPOT request includes: location, incident type, topography, fuel type, size, ignition time, contact info and a current weather observation (if available).

SPOT forecasts should be considered one-time requests, and are not routinely monitored, nor updated. Land management personnel **must** contact the servicing NWS office for an update if conditions become unrepresentative.

Example of a Standardized Spot Weather Forecast

```

Spot Forecast for Werges Prescribed...Chloeta Fire
National Weather Service La Crosse WI
943 AM CDT Fri May 8 2020

Forecast is based on ignition time of 0900 CDT on May 08.
If conditions become unrepresentative...contact the National Weather
Service.

Please contact our office at (608) 784-8292 if you have questions
or concerns with this forecast.

.DISCUSSION...Elevated fire weather conditions are expected today,
with relative humidities decreasing this morning to near 20 percent by
afternoon. Winds will be north around 10 to 15 mph, gusting to around
25 mph at times. Fires can start and spread quickly in this environment.
Winds will diminish and relative humidity will rise later this evening.
Relative humidities will be a little improved Saturday, with lighter
westerly winds. Widespread rain chances are expected Saturday night into
Sunday morning, exiting Sunday afternoon.

.REST OF TODAY...

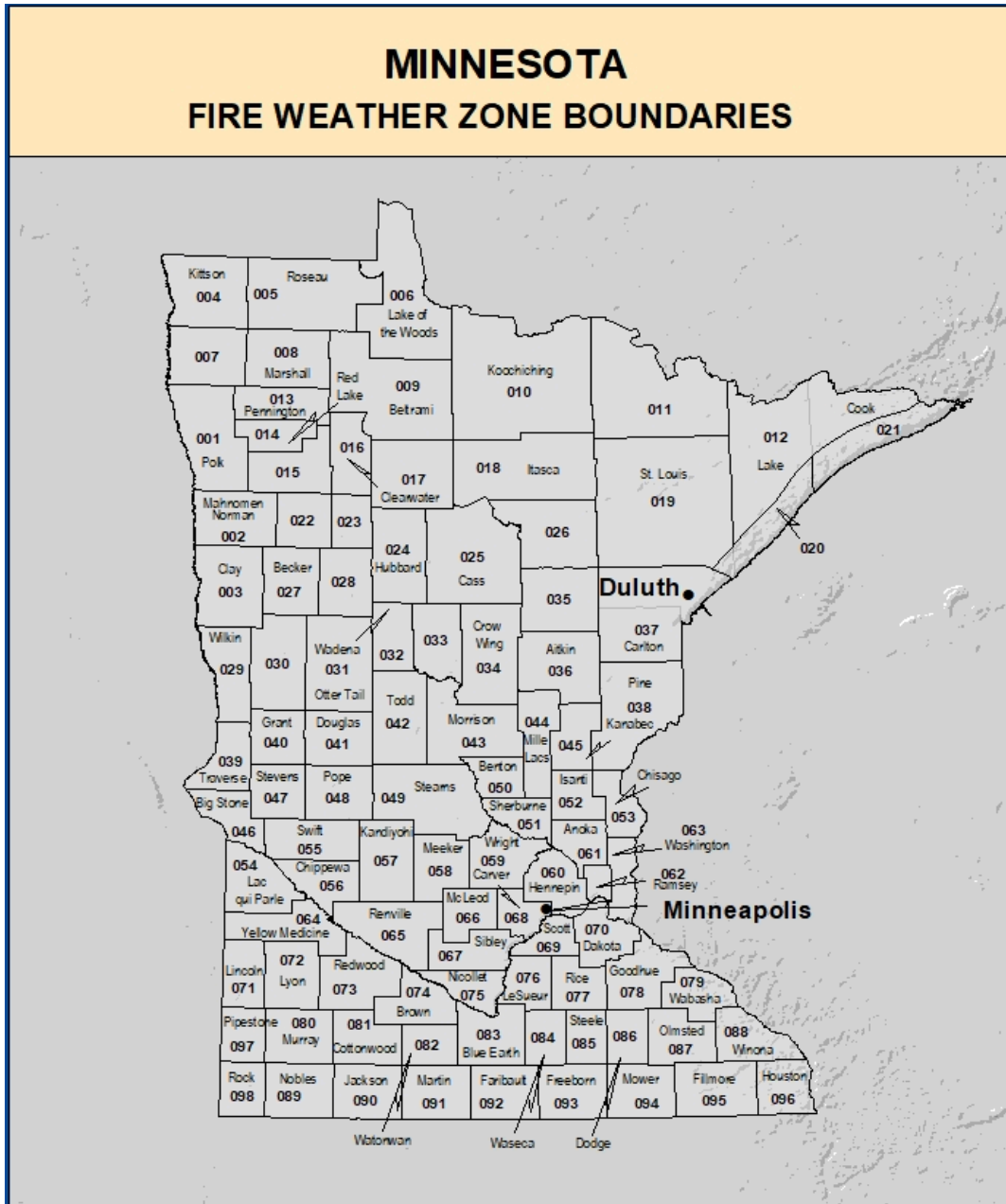
Sky/weather.....Mostly sunny.
CWR.....0 percent.
Temperature.....37 at ignition...Max 46.
RH.....42 percent at ignition...Min 19 percent.
Wind (20 ft).....Winds north at 11 mph at ignition...otherwise
                  North winds 10 to 15 mph with gusts to around
                  25 mph.
Smoke dispersal....Excellent /87300 knot-ft/ at ignition.
                  Max...excellent /134800 knot-ft/ increasing to
                  excellent (147000-171300 knot-ft) in the
                  afternoon.
Haines Index.....4 low at ignition...max 5.

TIME (CDT)      9AM 10A 11A 12P 1PM 2PM 3PM 4PM 5PM 6PM
Sky (%).....9   7   5   5   10  9   9   8   6   4
Weather cov....
Weather type...
Tstm cov.....
CWR.....0     0   0   0   0   0   0   0   0   0
Temp.....37   38  39  40  42  43  45  46  46  45
RH.....42   38  34  30  25  23  20  19  19  20
20 FT wind dir..N   N   N   N   N   N   N   N   N   N
20 FT wind spd..11  13  15  15  15  15  15  15  13  12
20 FT wind gust.23  25  25  23  23  23  23  23  23  22
Haines index....4   4   4   5   5   5   5   5   5   5
SDspl kt-ft/100087 123 127 131 135 147 159 171 166 160
    
```

3. FIRE WEATHER PLANNING FORECAST

- The Fire Weather Planning Forecast is issued for 98 fire weather zones in MN. These zones generally follow county lines, although some of the larger counties are subdivided into smaller zones.

- This product is issued routinely twice a day during the fire season. Once in the morning by 0700 and again in the afternoon by 1500 local time.
 - **NWS Sioux Falls** will only provide a morning forecast issuance during the summer months (June, July, thru mid August), unless requested by land managers to continue the afternoon product.
- This forecast will be updated when
 - Fire Weather Watch or Red Flag warning has been issued or canceled.
 - Current forecast is not representative of occurring or expected weather conditions.



Other resources for forecasts available for fire weather planning:

Fire Weather Dashboard: <https://www.weather.gov/dlh/fwd>

National Fire Weather Page: www.weather.gov/fire

Fire Weather Briefing Page: <http://www.weather.gov/dlh/firebriefing>

Graphical Weather Forecast:

<https://graphical.weather.gov/sectors/minnesotaFireDay.php#tabs>

3 day Outlooks: *Fire Weather, Severe Weather, Rainfall:*

<http://www.weather.gov/crh/outlooks>

GACC/EACC Weather:

http://gacc.nifc.gov/eacc/predictive_services/outlooks/outlooks.htm

MN IMET Resources Page: <http://www.weather.gov/dlh/imet>

4. NFDRS POINT FORECAST (FWM)

- Issued each afternoon by 1530 local time for RAWS stations in each office's local area.
- Point forecasts go out 7 days for all RAWS locations in MN

The National Fire Danger Rating System (NFDRS) is designed to represent the fire potential at the “worst time of day” over a large area. The output from the NFDRS serves to indicate levels of fire danger. From this, resource allocation and staffing are determined by the land management agencies.

If a known maintenance or data accuracy problem exists with an NFDRS forecast site, the problem will typically be reported to the station owner by the National Interagency Fire Center (NIFC) RAWS depot via e-mail. It is the duty of the station owner to take corrective action. If a NWS office knows of this problem and maintenance is not completed on the observation site, the NWS office may suspend the NFDRS forecast for that site until the problem is solved. Coordination and notification of the NFDRS forecast suspension will be coordinated with the Predictive Services section (Steve Marien) in the Eastern Area Geographic Area Coordination Center.

Point Forecast coding and interpretation

The format is: (commas but NO spaces)

FCST,SSCCNN,YYMMDD,VT,W,TT,RH,L1,L2,DD,VV,M,TM,TN,HM,HN,P1,P2,WF

STN # code SSCCNN where SS = State (21 is MN) CC = County NN = station

SSCCNN – 6-digit station number from above

YYMMDD - valid day of forecast - year/month/day (The forecast made on April 10, 2021 for the 15th would be 210415)

VT - Valid time (always a 13 for 1300 CST or 2 pm CDT)

W - State of the weather at 1300 CST tomorrow, as shown below:

0 = less than 1/8 clouds	1 = 1/8 to 4/8 opaque clouds	2 = 5/8 to 7/8 opaque clouds
3 = cloudy	4 = fog	5 = drizzle
6 = rain	7 = snow/sleet	8 = showers
9 = thunderstorms (Note: categories 5, 6, or 7 set NFDRS indices to zero)		

TT = temperature for 1300 CST tomorrow

RH = relative humidity for 1300 CST tomorrow

L1 = lightning activity level (1400 CST today until 2300 CST).

L2 = lightning activity level (2300 CST today until 2300 CST tomorrow).

1 = None	2 = Isolated	3 = few
4 = Scattered	5 = Numerous	6 = Dry lightning

DD = wind direction at 1300 CST tomorrow (16 point compass)

VV = 20 ft wind speed in mph at 1300 CST tomorrow

M = 10 hr fuel moisture (input by the users and left blank by the forecaster). Two commas will be noted next to each other if no fuel moisture has been input

TM = maximum temperature from **1300 CST to 1300 CST**

TN = minimum temperature from 1300 CST to 1300 CST

HM = maximum humidity in percent from 1300 CST to 1300 CST

HN = minimum humidity in percent from **1300 CST to 1300 CST**

P1 = pcpn duration in hours from 1300 CST today till 0500 CST tomorrow

P2 = pcpn duration in hours from 0500 CST tomorrow till 1300 CST tomorrow

WF = Wet Flag. Y or N. It is used to indicate if fuels will be wet at 1300 CST. Y will set all NFDRS indices to ZERO! In most cases a N is used.

5. OTHER ROUTINE NWS SERVICES

Verification – The Fire weather program leader will verify the Red Flag program. Results will be distributed to the NWS Regional Fire Weather Program Managers as well as to the appropriate State and Federal user groups in Minnesota. Red Flag Warnings will be verified based on the Probability of Detection, False Alarm Rate, Critical Success Index, and Lead Time.

Participation in Interagency Groups - NWS offices providing fire weather services for Minnesota are expected to participate in the Annual State Fire Meeting. This meeting serves as a forum for interaction between NWS program leaders and their interagency users. It also provides an effective vehicle for discussions pertaining to changes to this

AOP.

National Digital Forecast Database (NDFD) - The NWS provides another forecast tool called the National Digital Forecast Database (NDFD). This database contains forecast weather parameters on a 2.5 km grid. The NDFD runs through day 7, and is continually updated by NWS forecasters. Access to the NDFD is possible through NWS web pages by selecting the Forecast Graphics Tab near the top of the page. Information on the NDFD can be found at: <https://digital.weather.gov/>.

6. INCIDENT METEOROLOGIST (IMET) SERVICES

The NWS provides a cadre of trained Incident Meteorologists (IMETs) who will provide on-site forecasting for wildfires when requested by land management agencies. See directory for contact information.

Some Key Points Regarding IMETs:

- Only certified IMETS may be dispatched to support on-site service for a wildfire. The NWS is responsible for maintaining proficiency of designated IMETs.
- Request and dispatch of IMETs and equipment is accomplished through the National Resource Coordination System. See directory for contact information.
- In addition to wildfires, IMETs may be dispatched to support large critical resource value prescribed burns, hazardous substance release, or any special projects/incidents which fall under the mandate of the NWS. These other events will be supported depending upon availability.

For more information please refer to NWS Directive 10-402:

<https://www.nws.noaa.gov/directives/sym/pd01004002curr.pdf>

7. Training

1. Forecaster training NWS forecasters producing fire weather forecasts require training as set forth in NWSI 10-405:

<http://www.nws.noaa.gov/directives/sym/pd01004005curr.pdf>

- Complete the required NWS Fire Weather computer based learning modules and S-290, Intermediate Wildland Fire Behavior.
- Local training generally consists of review of the AOP, the Fire Weather Station Duty Manual and other station instructions, as well as training offered by the Fire Weather Program Leader or land management personnel.
- Forecasters must be familiar with NWS fire weather products and services, as well as be proficient in their preparation and dissemination.
- All forecasters issuing SPOT Forecasts or providing phone briefings are required to complete IS-100 and IS-700.

2. NWS Provided Training to Land Management Agencies

Guidelines for Teaching Interagency Courses:

Please refer to National Weather Service Directive NWSI 10-403 Appendix A available at: <http://www.nws.noaa.gov/directives/sym/pd01004003curr.pdf>

8. NWS NOTIFICATION TO CENTRAL REGION HEADQUARTERS

In the event of a major wildfire in MN, the servicing ***NWS office must report it to the MIC and NWS Central Region Headquarters (CR-ROC)***. A major fire event is one which results in one or more fatalities, numerous injuries, major property damage, or significant media attention.

III. WILDLAND FIRE AGENCY SERVICES AND RESPONSIBILITIES

1. OPERATIONAL SUPPORT AND PREDICTIVE SERVICES

Meteorologist Steve Marien, for the Eastern Area Coordination Center (EACC) works in a St. Paul office, while the main EACC office is in Milwaukee. The EACC meteorologist combines forecast information from NWS offices and other sources into area-wide summaries and briefings. This meteorologist, along with Fire Intelligence, forms the Predictive Services group which produces fire weather/fire danger assessments for USFS Region 9, which includes Minnesota.

The EACC Forecasts -

https://gacc.nifc.gov/eacc/predictive_services/predictive_services.htm

Steve Marien, EACC Meteorologist — Stephen_Marien@nps.gov

See the directory in the Appendix for addresses and contact information.

2. AGENCY COMPUTER SYSTEMS

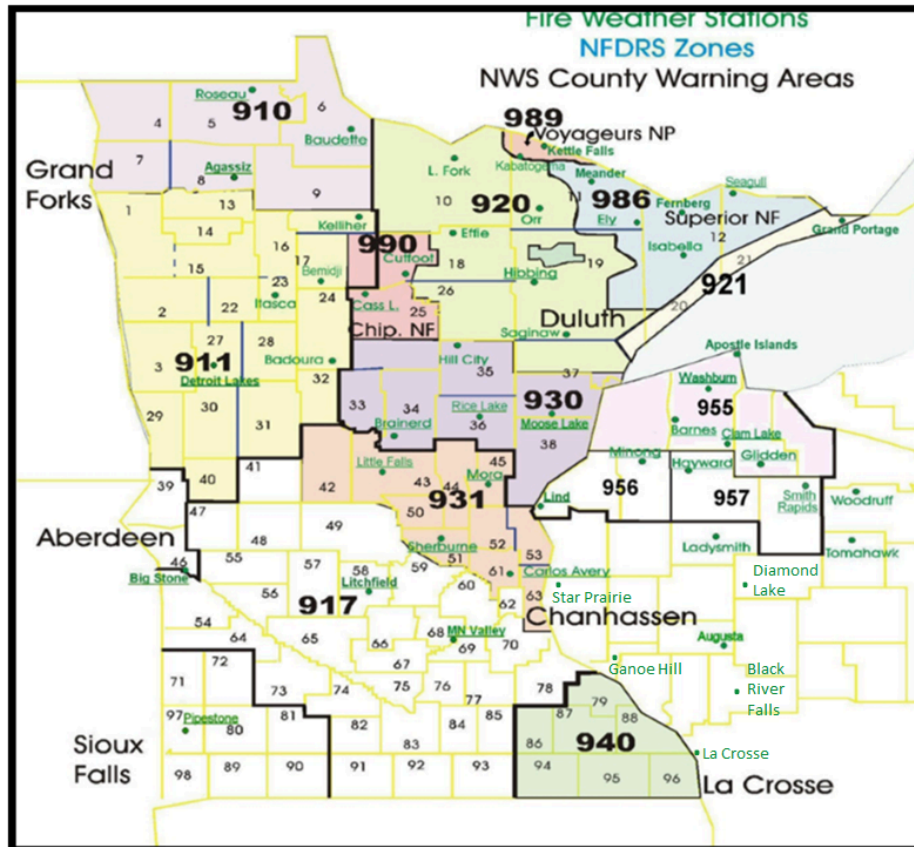
The communication system used to link the NWS with its users is the Weather Information and Management System (WIMS). The NWS receives user agency observations entered into WIMS via its Advanced Weather Interactive Processing System (AWIPS) computer system. Point and narrative forecasts are also sent to WIMS via this system. Observations and forecasts are exchanged between WIMS and AWIPS in the USFS Kansas City Computer Center.

3. FIRE WEATHER OBSERVATIONS AND STATIONS

All fire weather observations in Minnesota are from automated sites, and all have GOES antennas installed for data transmission. Station inspection and instrument maintenance are the responsibility of land management agencies. If a land management agency requests that NWS personnel assist in setting up a RAWS station, the NWS will oblige per the National Agreement. NWS travel expenses for equipment maintenance or station visits will be reimbursed by the Wildland Fire Agency making the request. The

NWS Fire Weather Program Leader and EACC Meteorologist need to be informed of any requests for new RAWS stations.

The NWS is responsible for assigning station numbers to NFDRS weather sites. The NWS local Fire Weather Program Leader will coordinate with the appropriate land management personnel and WIMS staff to determine the 6-digit station ID. It is the responsibility of the requestor/land management personnel to notify WIMS staff of RAWS station status.



Available Sites to View Fire Weather Observations and Locations:

Great Lakes Fire and Fuels Page: <https://glff.mesowest.org>

Western Regional Climate Center: <https://wrcc.dri.edu/wraws/mnF.html>

National Centers

National Fire Weather Page: <https://weather.gov/fire/>

US National Interagency Fire Center: <https://www.nifc.gov>

Eastern Area Coordination Center: <https://gacc.nifc.gov/eacc/>

4. REIMBURSEMENT FOR NWS PROVIDED ON-SITE SUPPORT AND TRAINING

Agencies will reimburse the NWS for all costs incurred for IMET support as well as for training assistance or station visitation.

IV. JOINT RESPONSIBILITIES

TRAINING

Meteorological training can be provided either by the NWS or the EACC meteorologist. Each NWS office has at least one person, typically the Fire Weather Program Leader, who is qualified to teach courses at least through Intermediate Fire Behavior (S-290). Requests for NWS training should be directed to that office's Fire Weather Program Leader or MIC. Sufficient notice should be given to allow for preparation as well as scheduling. Costs incurred by the NWS will be reimbursed by the requesting agency.

COORDINATION CALLS AND WEBINARS

NWS Fire Weather Program Leaders will participate in MNICS-hosted coordination conference calls. This duty will be shared by the program leaders. If they are not available, the EACC meteorologist or another forecaster on duty may fill in to conduct the weather briefing.

Calls are typically scheduled at 0900 on Tuesdays and Fridays during the fire season. The weather portion of the briefing should focus on the state of MN and be no more than 5 min. The weather briefing will highlight the forecast for the next 2-3 days, as well as any significant weather trends or possible critical fire weather situations in the upcoming week. ***Forecasters are asked to present weather information in a day-to-day format, rather than element-to-element.***

The Web Ex Conference call is hosted by MNICS on Tuesdays and Fridays during the fire season. A fire weather briefing page is maintained at the Duluth NWS and can be viewed at <http://www.weather.gov/dlh/firebriefing>

V. EFFECTIVE DATES ON THE AOP

This document will be effective approximately from February 1st, 2023 to February 1st, 2024.

VI. AGENCY SIGNATURES

Daniel Hawblitzel, MIC NWS Twin Cities _____ Date: _____
Representing all NWS offices with fire weather forecast responsibility in Minnesota

Greg Carlson, MNICS Task Force Chair _____ Date: _____ Signing for
MN DNR and All Federal Land Managers Management Agencies: USFS, BIA, NPS,
USFWS

2023 Minnesota Fire Weather Annual Operating Plan

VII. Appendix

- A. Smoke Management
- B. Haines Index
- C. NWS Chat and MN Fire Weather Coordination Room
- D. NOAA Weather Radio Network
- E. Fire-Weather Personal Directory (non-web version only)

APPENDIX A - SMOKE MANAGEMENT

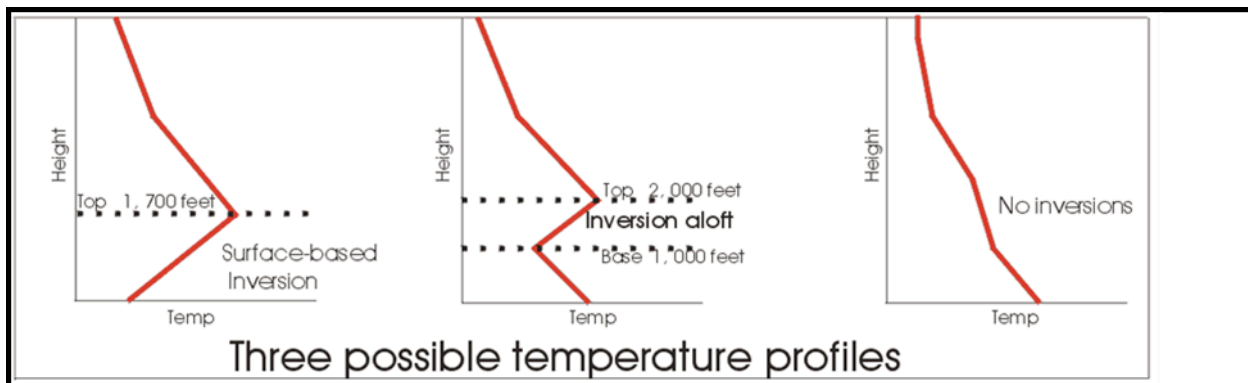
The Clean Air Act requires land management agencies to address the issue of smoke management in its prescribed burns. The goal is to burn in atmospheric conditions that would encourage smoke to rise to such a level that the smoke is dispersed as much as possible to reduce a number of health and safety risks near the fire.

A Minnesota Smoke Management Plan (SMP) was created in the year 2000 and should be considered the source document for any questions regarding the requirements or practices of smoke management in Minnesota. The plan was updated in 2014.

The National Weather Service will support the smoke management efforts of federal, state, and local agencies as well as organizations involved in such burning. The NWS will provide three (3) parameters used in smoke management in its Fire Weather Planning Forecasts. The NWS will also include these parameters, upon request of the land agency, in spot forecasts.

The three weather parameters of smoke management forecasts are mixing layer (or depth), transport winds, and dispersion index. For smoke management purposes, the mixing layer is usually considered the lowest layer of the atmosphere bounded by the earth's surface and the bottom of any temperature inversion which may exist aloft. A temperature inversion serves to trap smoke at low levels and prevents sufficient lofting of smoke to a level where winds would dilute or transport it away from the area.

Three upper air temperature profiles which affect smoke dispersal differently.



Left: A surface-based inversion is an absolutely stable condition that traps smoke and prevents lofting.

Middle: An elevated inversion is unstable or neutral and allows limited smoke rise, but the smoke will stop rising at the base of the inversion aloft.

Right: When no inversions are present, smoke is free to rise. However, the existing (ambient) lapse rate will determine the rate of rise and the plume characteristics.

The transport wind is defined as the average wind speed and direction through the

mixing layer.

In forecasts provided by the NWS, the transport wind will be provided in mph and the height of the mixed layer will be in feet AGL (above ground level).

The Dispersion Index is detailed in the Minnesota Smoke Management Plan (SMP) in section 4.2.2. The index is intended to serve as a single adjective index which describes how smoke will disperse on that day. The Dispersion Rate is given by the following formula as defined in the Minnesota Smoke Management Plan:

$$\text{Dispersion Index} = (\text{Mixing Height in feet}) \times (\text{Transport Wind in knots})$$

The Minnesota Smoke Management Plan (SMP) suggests the following interpretation of the values: **Dispersion Index Dispersion Rate**

< 13,000 Poor

13,000 - 29,999 Fair

30,000 - 59,999 Good

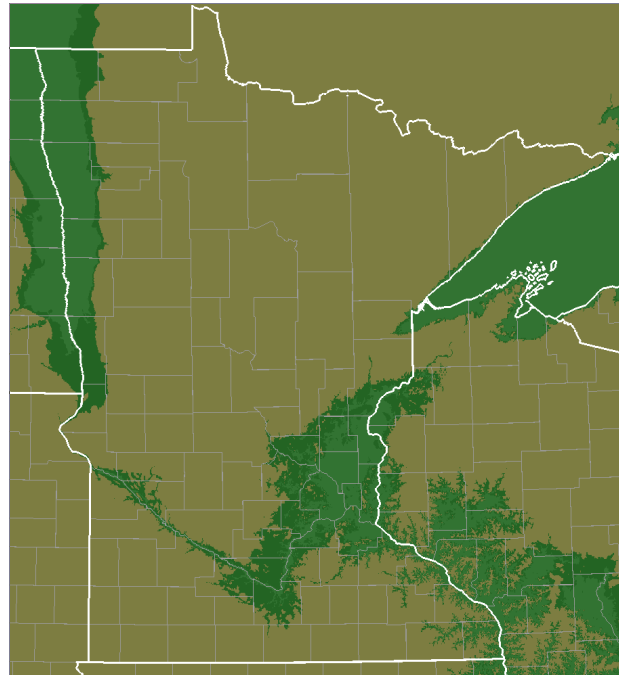
60,000 or greater Excellent

APPENDIX B - HAINES INDEX

What is the Haines Index?

The Haines Index combines the effects of *dry air and instability* to determine the potential for fire growth. Its purpose is to identify weather conditions that may allow an existing fire to spread rapidly or exhibit extreme fire behavior. The Haines Index does not account for wind. Instability is caused by warming the lower levels of the atmosphere, cooling the higher levels, or by a combination of the two processes. An unstable air mass promotes convection and rising currents of air.

In Minnesota, we use both the low and mid level variant of the Haines Index equation. The equation used is based on the elevation for a point, with areas under 1000 feet ASL using the low level version of the equations, with areas over 1000 feet ASL using the mid level variant. On the map, areas in green have an elevation less than 1000 feet ASL and calculate the Haines Index with the low elevation equation while areas in yellow use the mid altitude variant of the equation.



Computing the Haines Index

Haines Index = Stability (A) + Moisture (B)

Stability Term-LOW elevation (A) = 925 mb Temperature - 850 mb Temperature

Let A equal the following values according to the temperature differences

When stability term is 4 degrees C or less, let A = 1

When stability term is 4 to 8 degrees C, let A = 2

When stability term is 8 degrees C or more, let A = 3

Stability Term-MID elevation (A) = 850 mb Temperature - 700 mb Temperature

Let A equal the following values according to the temperature differences

When stability term is 5 degrees C or less, let A = 1

When stability term is 6 to 10 degrees C, let A = 2

When stability term is 11 degrees C or more, let A =3

Moisture Term-low & mid elevations (B) = 850 mb Temperature - 850 mb Dewpoint

When moisture term is 5 degrees C or less, let B = 1

When moisture term is 6 to 12 degrees C, let B = 2

When moisture term is 13 degrees C or more, let B = 3

(The greater the value of this term, the drier the air is)

<p>Haines = A + B</p> <p>Haines Values</p> <p>2 or 3 Very Low</p> <p>4 Low</p> <p>5 Moderate</p> <p>6 High</p>
--

A weakness of using the Haines Index is that the stability and moisture terms are calculated at two fixed levels. At times, making the calculations at slightly different levels could lead to a significantly different Haines Index.

APPENDIX C - NWS Chat and MN Fire Weather Coordination Room

Purpose

Facilitate the coordination of impact based weather services between the National Weather Service and external partners. For more information on NWSChat, see [National Weather Service Directive 10-1722](#).

Minnesota Fire Weather Chatroom

To facilitate the coordination of fire weather services in the state of Minnesota the following chat room has been created:

state-mn-fire-weather-coordination. This room is open for NWS forecasters and members of the MNICS group. There are no media or local public safety officials in the room. Anytime a Red Flag Warning is issued by the NWS in the state of MN, it will automatically populate into the room. Users can generate content as well to coordinate fire weather concerns across the state. Below is an example of the type of information that can be shared in the room.

NWS - Twin Cities - Brennan Dettmann MPX 12:46 PM

Afternoon Update: In collaboration among offices, the Red Flag Warning has been expanded to parts of Southern and Central Minnesota. As cloud cover has began to clear, more efficient mixing is leading to greater wind speeds in this area. The combination of decreasing RH values (already widespread sub 30 and pockets of sub 25 in Blue Earth, Nicolet, and Le Sueur counties) and overperforming winds warranted the expansion. (edited)

wwa_mar6.png ▾

Red Flag Warning This Afternoon
Expanded to portions of Southern and Central Minnesota

Weather Forecast Office
Twin Cities-Chanhassen, MN
Issued: Mar 06, 2020 12:30 PM CDT

1

Eligibility and Account Signup

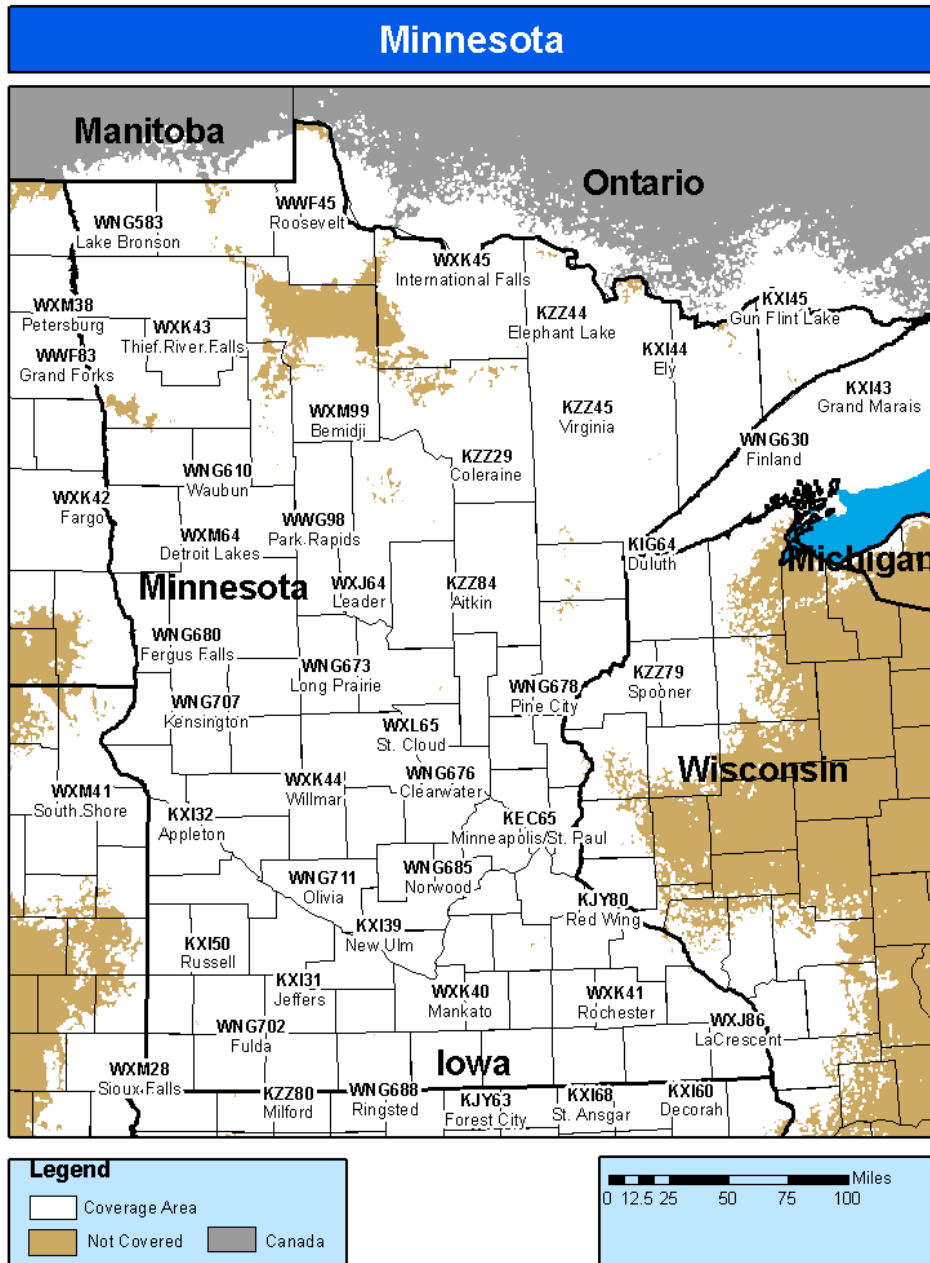
If you are affiliated with a group that is within the MNICS umbrella, you are eligible to join NWSchat. You can sign up for NWSchat as a **partner** at <https://partnerservices.nws.noaa.gov/registration/>. Once you sign up for an account, someone with the NWS will approve your request to access the MN fire weather chatroom.

Huddle Breakout Rooms

As NWSchat is a Slack based chat program, we have the ability to create Huddle video/audio chats on an as needed basis. A Huddle can be created to coordinate the issuance of Red Flag Warnings, allowing multiple NWS forecasters and fire weather partners to participate in a Red Flag Warning or coordination activities.

APPENDIX D - NOAA Weather Radio Stations

For more information about each transmitter site, and a complete listing of frequencies please visit: <https://www.nws.noaa.gov/nwr/Maps/PHP/MN.php>. Below is a map showing the location of all NOAA Weather Radio transmitters that cover MN.



APPENDIX E - Phone Directory

National Weather Service Offices and Personnel

Twin Cities/Chanhassen, MN (MPX) <https://www.weather.gov/mpx/fire>
1733 Lake Drive West Operations: 952-361-6671
Chanhassen, MN 55317 Fax: 952-361-6668
Mike Griesinger - F/W Program manager michael.griesinger@noaa.gov
Caleb Grunzke - **IMET (trainee)** caleb.grunzke@noaa.gov
Dan Hawblitzel, MIC daniel.hawblitzel@noaa.gov

Duluth, MN <https://www.weather.gov/dlh/fire>
5027 Miller Trunk Highway Operations: 218-729-6572
Duluth, MN 55811 Fax: 218-729-0690
Woody Unruh - F/W Program Manager woodrow.unruh@noaa.gov
IMET (trainee)
Nathan Lynum - F/W Program Asnt nathan.lynum@noaa.gov
Lee Britt - F/W Program Asnt lee.britt@noaa.gov
Laren Reynolds, MIC laren.reynolds@noaa.gov

Grand Forks, ND <https://www.weather.gov/fgf/fire>
4797 Technology Circle Operations: 701-795-5127
Grand Forks, ND 58203 Fax: 701-772-0751
Brad Hopkins, F/W Program Manager brad.hopkins@noaa.gov
Mindy Beerends, MIC melinda.beerends@noaa.gov Phone: 701-795-5198

La Crosse, WI <https://www.weather.gov/arx/fire>
N2788 County Road Operations: 608-784-8292
La Crosse, WI 54601 Fax: 608-784-8238
Jeff Makowski, F/W Program Manager jeff.makowski@noaa.gov
Todd Shea, MIC todd.shea@noaa.gov Ph: 608-784-8275x642

Sioux Falls, SD <https://www.weather.gov/fsd/fire>
26 Weather Lane Operations: 605-330-4246
Sioux Falls, SD 57104 Fax: 605-330-4248
Kyle Weisser, F/W Program Manager kyle.weisser@noaa.gov
Jeff Chapman, F/W Program Asnt jeff.chapman@noaa.gov
Todd Heitkamp, MIC todd.heitkamp@noaa.gov

Aberdeen, SD <https://www.weather.gov/abr/fire>
824 391st Ave. S Operations: 605-225-5547
Aberdeen, SD 57401 Fax: 605-225-7417
Kari Fleegel, F/W Program Manager kari.fleegel@noaa.gov
IMET
Travis Tarver, F/W Asnt travis.tarver@noaa.gov
James Scarlett, MIC james.scarlett@noaa.gov Phone: 605-225-0519

Larry Van Bussum (IMET Coordinator) larry.vanbussum@noaa.gov Ph: 208-334-9824/9862

National Interagency Fire Center (NIFC) Fax: 208-334-1660 Cell: 208-863-2582

National Fire Weather Program Leader

Heath Hockenberry heath.hockenberry@noaa.gov

NWS Central Region Fire Weather Program Leader

Chris Foltz - IMET christopher.foltz@noaa.gov Phone: 816-833-6299

Minnesota Interagency Coordination Center (MNCC)

MNCC Dispatch (24 hours) Phone: 218-327-4558 Fax: 218-327-4528

Travis Verdigan **Red Flag Coordinator** travis.verdegan@state.mn.us Cell: 218-244-5690
Predictive Services Coordinator Home: 715-415-1134 Work: 218-322-2682

Ryan Kingsley, MNCC Center Manager ryan.kingsley@usda.gov Phone: 218-322-2738
Cell: 218-451-8628

U.S. Forest Service - U.S. Department of Agriculture

MNCC Dispatch (24 hours) Phone: 218-327-4558

All dispatching for the Chippewa NF and Superior NF are done through MNCC Operations

Superior National Forest sm.fs.superior_nf@usda.gov Phone: 218-327-4558
Duluth, MN 55811 Fax: 218-327-4528

Chippewa National Forest sm.fs.chipnpublic@usda.gov Phone: 218-327-4558
Cass Lake, MN 56633 Fax: 218-327-4528

Ryan Johnson, Operations ryan.c.johnson@usda.gov Phone: 218-322-2755
MNCC Asst. Center Manager Cell: 218-451-8431

Caleb Schreiber, USFS Forest FMO caleb.schreiber@usda.gov Phone: 218-322-2685
Cell: 503-501-7572

Brian Wise, Fire Cache Manager brian.wise@usda.gov Phone: 218-322-2763

Minnesota Department of Natural Resources (DNR)

MN Wildfire Information Center Home Page <https://www.dnr.state.mn.us/forestry/fire/index.html>

William "B.J." Glesener, DNR Wildfire Supv. william.glesener@state.mn.us Phone: 218-322-2682
Leanne Langeberg, Public Information Officer leanne.langeberg@state.mn.us Phone: 218-322-2739
Jolene Soltis, Intelligence jolene.soltis@state.mn.us Phone: 218-322-2745
Anna Hines, Aviation anna.hines@state.mn.us Phone: 218-327-4582
MNCC Asst. Center Manager

Minnesota Pollution Control Agency - Air Quality (MPCA)

[MPCA Air Quality Home Page](#)

Matthew Taraldsen matthew.taraldsen@state.mn.us Phone: ?

Others?

National Park Service - U.S. Department of the Interior

Greg Carlson, Fire Ops Specialist greg_carlson@nps.gov Phone: 218-283-6666
Voyageurs National Park Fax: 218-285-7407
360 Hwy 11 E
International Falls, MN 56649

U.S. Fish and Wildlife Service - U.S. Department of the Interior

Russ Langford russ_langford@fws.gov Phone: 612-713-5498
Dep. Regional Fire Management Coordinator Cell: 763-244-9844
5600 American Blvd. W Suite 990
Bloomington, MN 55437

Seth Grimm seth_grimm@fws.gov Phone: 218-844-3401
West Zone Fire Management Officer Cell: 218-849-7864
1732 Tower Road
Detroit Lakes, MN 56501

Bureau of Indian Affairs - U.S. Department of the Interior

Tom Remus, Regional FMO thomas.remus@bia.gov Phone: 218-259-8658
MN Interagency Fire Center
40002 SE 11th St.
Grand Rapids, MN 55744

Cory Berg, Minnesota Agency FMO cory.berg@bia.gov Phone: 218-766-3091
2225 Cooperative Court NW, #300
Bemidji, MN 56601

Eastern Area Interagency Coordination Center (EACC)

Brendan Neylon, Center Manager <https://gacc.nifc.gov/eacc/> Phone: 414-944-3811
626 E. Wisconsin Ave., Suite 500 Fax: 414-944-3838
Milwaukee, WI 53202

Steve Marien, EACC Meteorologist stephen_marien@nps.gov Phone: 402-250-7844
Eastern Area Fire Weather Program Manager
111 East Kellogg Blvd., Suite 105 [EACC Predictive Services Home Page](#)
St. Paul, MN 55101